

Research article

A regulator of G Protein signaling, RGS3, inhibits gonadotropin-releasing hormone (GnRH)-stimulated luteinizing hormone (LH) secretion

Jimmy D Neill*¹, L Wayne Duck¹, Jeffrey C Sellers¹, Lois C Musgrove¹ and John H Kehrl²

Address: ¹Department of Physiology and Biophysics, University of Alabama School of Medicine, Birmingham AL 35294; and ²Laboratory of Immunoregulation, National Institute of Allergy and Infectious Diseases, National Institutes of Health, Bethesda MD 20892

E-mail: Jimmy D Neill* - neill@uab.edu; L Wayne Duck - duckster@mindspring.com; Jeffrey C Sellers - jsellers@uab.edu; Lois C Musgrove - musgrove@uab.edu; John H Kehrl - jkehrl@niaid.nih.gov

*Corresponding author

Published: 7 November 2001

Received: 20 April 2001

BMC Cell Biology 2001, 2:21

Accepted: 7 November 2001

This article is available from: <http://www.biomedcentral.com/1471-2121/2/21>

© 2001 Neill et al; licensee BioMed Central Ltd. Verbatim copying and redistribution of this article are permitted in any medium for any non-commercial purpose, provided this notice is preserved along with the article's original URL. For commercial use, contact info@biomedcentral.com

Abstract

Background: Luteinizing hormone secreted by the anterior pituitary gland regulates gonadal function. Luteinizing hormone secretion is regulated both by alterations in gonadotrope responsiveness to hypothalamic gonadotropin releasing hormone and by alterations in gonadotropin releasing hormone secretion. The mechanisms that determine gonadotrope responsiveness are unknown but may involve regulators of G protein signaling (RGSs). These proteins act by antagonizing or abbreviating interaction of G α proteins with effectors such as phospholipase C β . Previously, we reported that gonadotropin releasing hormone-stimulated second messenger inositol trisphosphate production was inhibited when RGS3 and gonadotropin releasing hormone receptor cDNAs were co-transfected into the COS cell line. Here, we present evidence for RGS3 inhibition of gonadotropin releasing hormone-induced luteinizing hormone secretion from cultured rat pituitary cells.

Results: A truncated version of RGS3 (RGS3T = RGS3 314–519) inhibited gonadotropin releasing hormone-stimulated inositol trisphosphate production more potently than did RGS3 in gonadotropin releasing hormone receptor-bearing COS cells. An RGS3/glutathione-S-transferase fusion protein bound more ³⁵S-Gq α than any other member of the G protein family tested. Adenoviral-mediated RGS3 gene transfer in pituitary gonadotropes inhibited gonadotropin releasing hormone-stimulated luteinizing hormone secretion in a dose-related fashion. Adeno-RGS3 also inhibited gonadotropin releasing hormone stimulated ³H-inositol phosphate accumulation, consistent with a molecular site of action at the Gq α protein.

Conclusions: RGS3 inhibits gonadotropin releasing hormone-stimulated second messenger production (inositol trisphosphate) as well as luteinizing hormone secretion from rat pituitary gonadotropes apparently by binding and suppressing the transduction properties of Gq α protein function. A version of RGS3 that is amino-terminally truncated is even more potent than intact RGS3 at inhibiting gonadotropin releasing hormone-stimulated inositol trisphosphate production.

Background

A near-universal feature of cell signaling *via* seven transmembrane, G protein-coupled receptors is attenuation of a cellular response upon prolonged exposure to an extracellular stimulus [1]. This desensitization process is well-established for GnRH-stimulated LH secretion from pituitary gonadotropes [2,3], and occurs after about 6 h of continued exposure to GnRH in rats [3]; removal of GnRH permits recovery from the profound suppression of LH secretion, albeit rather slowly (2–4 days; 4). The molecular mechanisms involved in GnRH-induced desensitization are poorly understood, but they do not appear to be due to alterations in GnRH receptor expression [5,6] or to changes in LH concentrations in the pituitary gland [7,8].

Earlier, we presented evidence that a regulator of G protein signaling, RGS3, might participate in the regulation of GnRH receptor signaling [9]. The mechanism of RGS action is antagonism of the $G\alpha$ protein either by accelerating its hydrolysis of GTP, thereby prematurely terminating signaling due to reassociation of the $G\alpha$ and $G\beta\gamma$ complexes [10], or by antagonizing interaction of the $G\alpha$ protein with its effector such as phospholipase C β [11,12]. A large number of RGS genes have been identified in mammals based on the presence of a 120 amino acid core domain [13–16]. RGS proteins have been described that interact with the $G_{i\alpha}$ and $G_{q\alpha}$ members of the G protein family [17–21].

Previously, we showed that RGS3 was expressed endogenously in rat pituitary cells and, when experimentally co-expressed together with GnRH receptors in a heterologous cell line (COS1), it suppressed GnRH-stimulated inositol trisphosphate production [9]. Here, those studies have been extended to include GnRH-stimulated LH secretion using adenovirus-mediated gene transfer of RGS3 complementary DNA into normal rat pituitary gonadotropes. RGS3 was found to profoundly inhibit GnRH-stimulated LH secretion and 3H -inositol phosphate accumulation. However, a calcium ionophore stimulated LH secretion in RGS3-expressing gonadotropes, confirming a specific site of action occurring at phospholipase C β or earlier in the signal transduction pathway.

Results

The initial experiments were performed to confirm our earlier finding that RGS3 suppressed GnRH-stimulated IP $_3$ production in COS-1 cells [9] and to test a truncated form of RGS3, RGS3T (RGS3 314–519) [24] for suppressive activity in the same assay (Fig. 1). cDNAs representing the GnRH receptor and RGS3 or RGS3T were co-transfected into COS-1 cells for GnRH-A treatment 72 h later; intracellular IP $_3$ concentrations were measured at

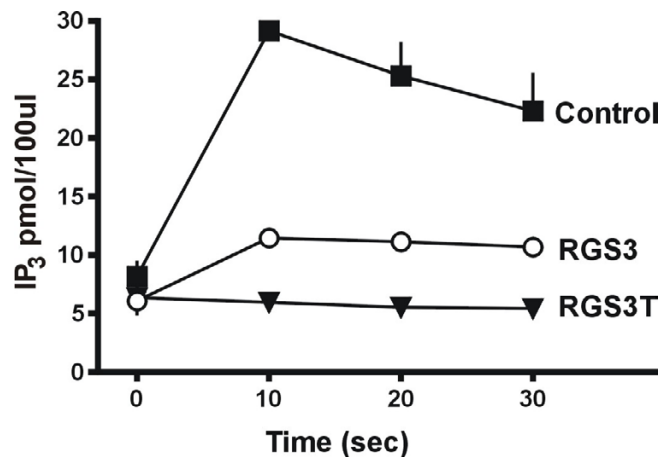


Figure 1

RGS3 and RGS3T suppress GnRH-stimulated IP $_3$ concentrations in COS-1 cells. The cells were co-transfected with cDNAs representing the GnRH receptor and RGS3 or RGS3T; 72 h later the cells were treated with $10^{-7}M$ GnRH for 0, 10, 20, or 30 sec before being collected for IP $_3$ measurements using receptor radioassay in which IP $_3$ and 3H -IP $_3$ competed for binding to IP $_3$ receptors prepared from calf cerebellum. Data presented are the mean \pm SEM of three independent experiments. The SEM is not shown for some data points because it was smaller than the symbol. The RGS3 and RGS3T groups are significantly lower than the control group ($p < 0.05$), and the RGS3T group is significantly lower than the RGS3 group ($p < 0.05$).

0, 10, 20, and 30 sec after addition of $10^{-7}M$ GnRH-A (Fig. 1). As expected, RGS3 exerted a profound suppression of IP $_3$ production at each of the time points during the 30 sec after agonist treatment ($p < 0.05$) (Fig. 1). RGS3T is comprised primarily by the consensus RGS domain and was originally reported to decrease the growth rate of yeast and to inhibit IL-8 receptor mediated activation of MAP kinase by a factor of 3–10 fold as compared to RGS3 [24] and was subsequently reported to be a normally expressed variant of RGS3 [37]. Therefore, we compared it to RGS3 for attenuation of GnRH-stimulated IP $_3$ production in COS-1 cells (Fig. 1). As reported by others [24,37], we found that RGS3T was more potent than RGS3 ($p < 0.05$) (Fig. 1). Identification of a C-terminal 205 amino acid variant of RGS3 that has equal or greater potency than the full-length 519 amino acid RGS3 will facilitate the identification of RGS3 functional protein domains that are important for its activity.

The family of RGS proteins are established to interact with various $G\alpha$ -protein subunits, thereby antagonizing their activities [13–18,24]. Indeed, we previously reported that RGS3 bound $G_{q\alpha}$ [9], the G protein subunit that mediates GnRH receptor signaling [38]. Here, we have extended those binding studies to include other $G\alpha$ pro-

RGS3 Binding to G proteins

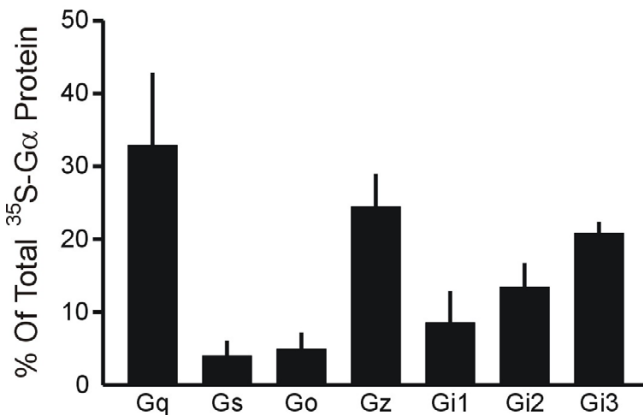


Figure 2

In vitro binding of RGS3 to G α proteins. An RGS3-GST fusion protein was incubated with ³⁵S-Met-G α proteins, and glutathione beads were used to "pull-down" the RGS3-GST/G α protein complex. The amount of ³⁵S-G α protein bound was determined by SDS/PAGE separation, and quantification using a Phosphor imaging device. The data point for each G protein is the fraction of its total cpm that were bound to RGS3-GST fusion protein after subtraction of the cpm bound to control GST fusion protein. Mean \pm SEM of three independent experiments. Gq α , Gz α , and Gi3 α were not significantly different from the other G α -proteins ($p < 0.05$) that, in turn, were significantly higher than a group to which ³⁵S-Met alone was added ($p < 0.05$).

teins (Fig. 2). An RGS3-GST fusion protein was incubated with an ³⁵S-Met-G α -protein, and the amount of labeled G α -protein was determined using glutathione-coupled beads to "pull down" the RGS3-GST/³⁵S-G α -protein complex that was then separated and quantified by SDS/PAGE (Fig. 2). More Gq α was bound by RGS3 than any other protein, although its binding was not significantly different from that of Gz α and Gi α ($p > 0.05$). Significant ($p < 0.05$) amounts of Gi2 α , Gi1 α , Go α , and Gs α also were bound but were not as high as Gq α , Gz α , and Gi3 α . These results confirm our previous findings that RGS3 interacts with Gq α but also show that it has significant interaction with all other G α -proteins studied.

The findings of the current, and an earlier study [9], demonstrate clearly that RGS3 suppresses GnRH receptor signaling in a heterologous cell system. Because of the evidence that the signal transduction pathway for GnRH in gonadotropes involves the GnRH receptor, Gq α , phospholipase C β , and cellular IP₃ release [39,40], we determined the effect of RGS3 on GnRH-stimulated LH secretion using adenoviral-mediated gene transfer in rat pituitary cells (Fig. 3). In these experiments, we per-

formed a dose-response test that included three experimental groups: uninfected, adeno- β galactosidase, and adeno-RGS3 infected. Adeno- β gal infection was used for determination of the fraction of cells infected at each dose of virus (Fig. 3, top panel) and as a control for the effects of adeno-RGS3 on GnRH-stimulated LH secretion (Fig. 3, middle panel). Cell viability, measured as trypan blue exclusion, varied from 98.5–100.0% (Fig. 3, top panel). The fraction of cells infected by the adenovirus depended on viral dose (0–5.0 M.O.I.; 1 M.O.I. = 1 viral particle/pituitary cell) and ranged from about 2% (no adenovirus) to 99.5% (5.0 M.O.I.). Adeno- β gal had no effect on LH secretion at any dose compared to the uninfected group (Fig. 3, middle panel). In contrast, an inverse dose-related effect was observed between adeno-RGS3 and GnRH-stimulated LH secretion (Fig. 3, bottom panel). RGS3 0.2 M.O.I. was the lowest dose to inhibit LH secretion ($p < 0.05$), and 2.0 and 5.0 M.O.I. exerted near complete inhibition of LH secretion; i.e. LH concentrations in these two latter GnRH-treated groups did not differ from their cohort controls ($p > 0.05$).

The profound inhibition of GnRH-stimulated LH secretion observed in Fig. 3 required verification that RGS3 expression was induced by adeno-RGS3 infection. To address this issue, we performed RGS3 immunoblots (Fig. 4) which showed an increase in RGS3 protein expression in adeno-RGS3 (5.0 M.O.I.) infected pituitary cells as compared to low to negligible levels of protein in the uninfected and adeno- β gal infected groups.

As evidenced earlier, the molecular locus of RGS protein action is thought to be the G protein α subunit, specifically Gq α in the case of GnRH receptor activation. The results shown in Fig. 5 are consistent with this conclusion: adeno-RGS3 infection of rat pituitary cells profoundly suppressed GnRH-stimulated ³H-inositol phosphate accumulation. These results are compatible with a molecular site of action for RGS3 being at phospholipase C or earlier in the signal transduction pathway.

Another experiment conducted to test the specificity and molecular locus of RGS3 action in inhibiting GnRH-stimulated LH secretion was treatment of adeno-RGS3 infected cells with an agent that increases intracellular calcium (Fig. 6). Calcium is an established stimulator of LH secretion that is thought to act at sites downstream of phospholipase C [39,40]. Therefore, adeno-RGS3 infected pituitary cells were treated with a calcium ionophore (A23187). Adeno-RGS3 inhibited LH secretion in the GnRH-treated control group as expected (Fig. 6). However, the calcium ionophore stimulated LH secretion in RGS3-expressing gonadotropes (Fig. 6), an effect that would be expected if the RGS3 inhibition was exerted at the level of the Gq α protein.

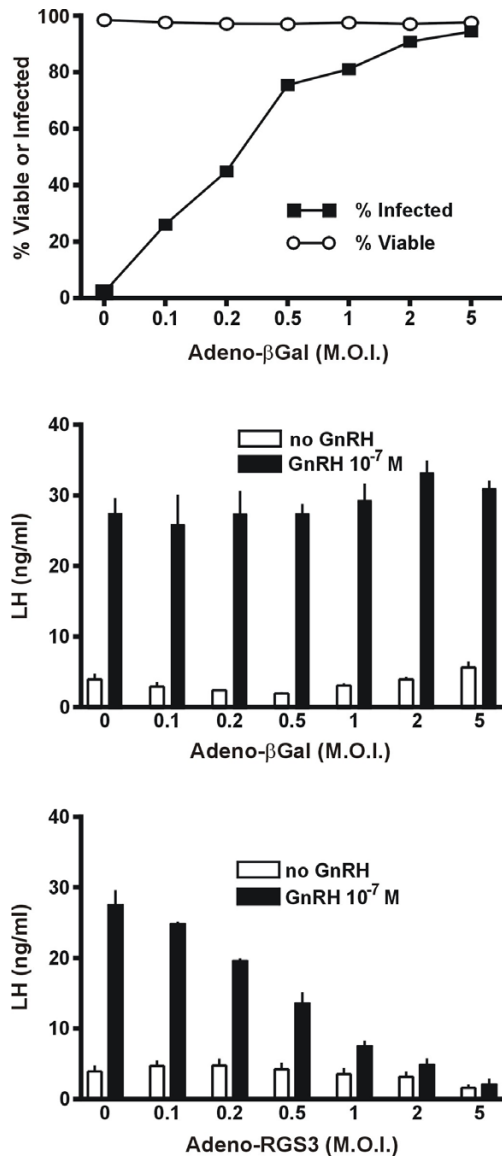


Figure 3
 RGS3 inhibits GnRH-stimulated LH secretion. Rat anterior pituitary cells were infected or not with adeno-βgal or adeno-RGS3, and 72 h later treated with GnRH to stimulate LH secretion. Upper panel: Adeno-βgal infection was used to determine the fraction of total pituitary cells infected at each dose of adenovirus. Cell viability was measured as trypan blue exclusion. Middle panel: Adeno-βgal infection at various doses was used to control for the effect of RGS3 on GnRH-stimulated LH secretion. No dose of adeno-βgal had an effect on LH release ($p < 0.05$). Bottom panel: Dose-response relationship between dose of adeno-RGS3 and GnRH-stimulated LH secretion. Adeno-RGS3 doses of 0.2 M.O.I. and higher significantly inhibited LH release ($p < 0.05$); doses of 2.0 and 5.0 M.O.I. suppressed LH secretion to levels that were not significantly different from their cohorts not treated with GnRH ($p < 0.05$). Data are mean \pm SEM of three independent experiments.

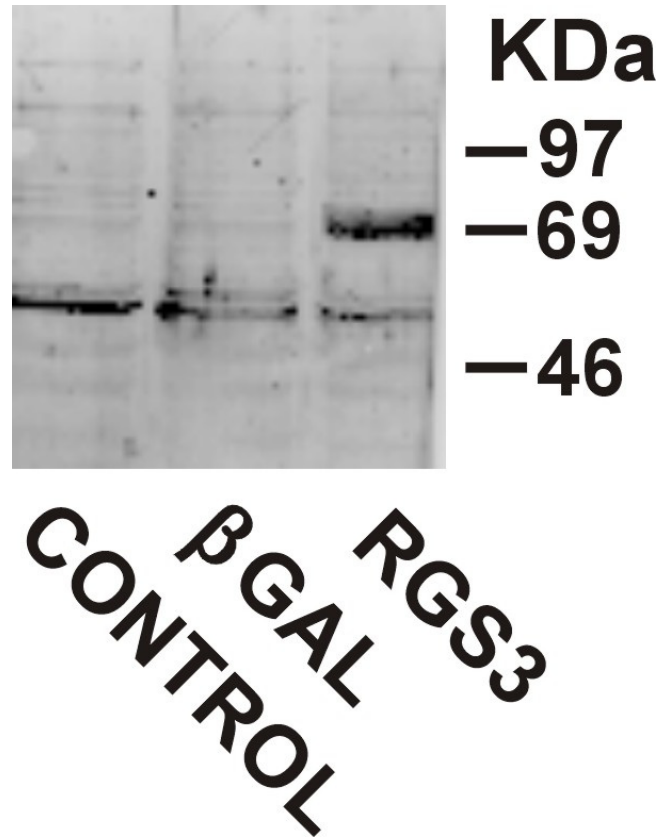


Figure 4
 One immunoblot representative of 2 showing RGS3 expression in rat pituitary cells that remained uninfected (control) or were infected with 5 M.O.I. adeno-βgal or of adeno-RGS3. The ~70 kDa band is RGS3 (24); the bands at ~54 kDa are non-specific because they appear in all 3 lanes.

In two final control studies, we investigated the effect of adeno-RGS3 on LH concentrations in pituitary cells and on GnRH receptor binding (Fig. 7). In neither case did RGS3 affect these parameters of gonadotrope function ($p > 0.05$).

Discussion

The quantity of LH secreted by the anterior pituitary gland is the outcome of an interaction between the amount of hypothalamic GnRH secretion and the level of gonadotrope responsiveness to GnRH [7]. Quantitatively, gonadotrope responsiveness is more important than the level of GnRH secretion; for example, during the estrogen-stimulated preovulatory surge of LH secretion in the rat there is a 5-fold increase in GnRH secretion but a 50-fold increase in LH secretion [7]. Moreover, a quantity of GnRH that will evoke a normal preovulatory LH surge during the period preceding ovulation will induce only a small increase in LH secretion at other stages of the estrous cycle [7]. Similarly, termination of the pre-

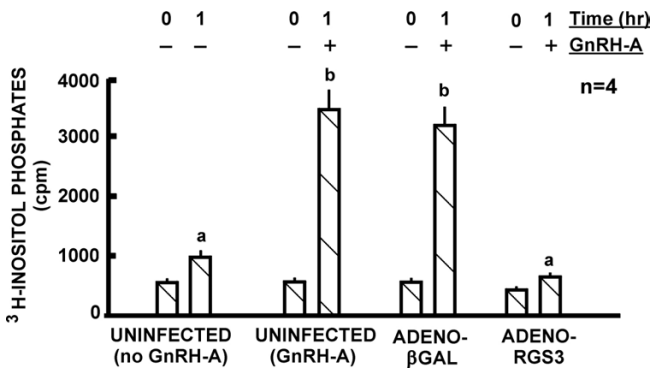


Figure 5
³H-inositol phosphate accumulation stimulated by GnRH was inhibited by RGS3. Pituitary cells were infected with adeno-βgal or adeno-RGS3 (5 M.O.I.) and 72 h later were treated with GnRH agonist (10⁻⁷ M for 1 h). Data presented are the means ± SEM (n = 4). The letter *a* above the results of the treatment groups indicates that a group is not statistically significantly different (p > 0.05) from its control whereas the letter *b* indicates difference (p < 0.05) from its control group.

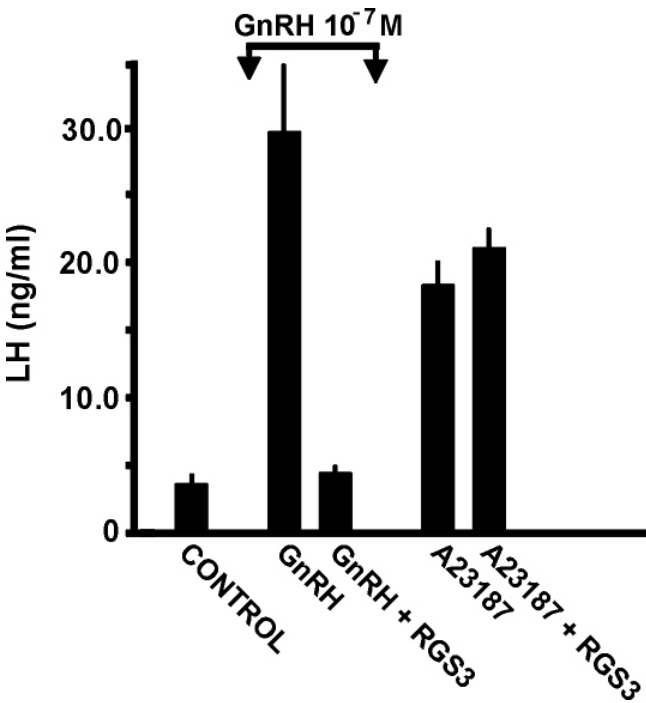


Figure 6
 Calcium influx stimulated LH secretion in rat pituitary cells expressing RGS3. Calcium influx was achieved by calcium ionophore (A23187) treatment (100 μM for 3 h) of pituitary cells infected with 5 M.O.I. of adeno-RGS3. Adeno-RGS3 significantly inhibited LH secretion stimulated by GnRH (p < 0.05) but not by calcium ionophore (p > 0.05).

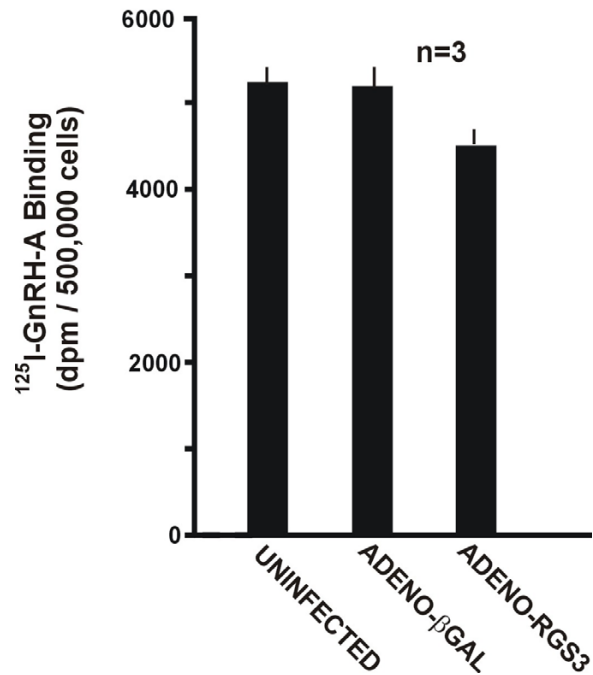
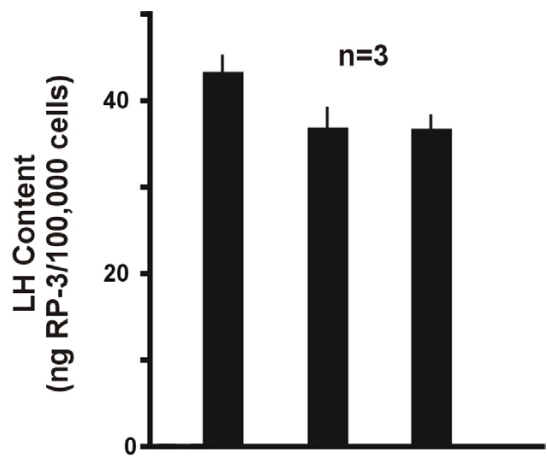


Figure 7
 Effect of RGS3 on LH content and GnRH receptor binding. Pituitary cells were infected or not with adeno-RGS3 or adeno-βgal (5 M.O.I.) and 72 h later were used for measurement of LH content or of GnRH receptors. Upper panel: LH content of pituitary cells was measured after repeated freezing and thawing to release LH for measurement by RIA. There were no significant differences among the groups (p > 0.05). Lower panel: Pituitary cell membranes were prepared for measurement of GnRH receptors by binding to ¹²⁵I-GnRH-A. There were no significant differences among the groups. Our earlier report that adeno-βgal (60 M.O.I.) increased receptor binding by 100% (23) was not observed here because of the lower dose of adeno-βgal (5 M.O.I.) used. Data are mean ± SEM of three independent experiments.

vulatory LH surge appears to be due to desensitization of the gonadotrope to GnRH action; in the sheep, a decrease in LH secretion precedes the decrease in GnRH secretion [41], whereas in the rat, although the decrease in GnRH and LH secretion are co-incident [7], there is evidence that the gonadotrope is already desensitized to GnRH [42,43].

The mechanisms that alter gonadotrope responsiveness to GnRH are unknown but they do not appear to be due to GnRH receptor number or LH stores in the pituitary gland [5–8]. However, the fraction of LH that is released by a maximal dose of GnRH does vary positively with gonadotrope responsiveness [7], and elucidation of the mechanisms altering the fraction of releasable LH is likely to illuminate mechanisms of gonadotrope responsiveness to GnRH [44].

Two molecular loci recently have been implicated as potential modulators of GnRH receptor signaling: one is the receptor itself [23], and the other is the G protein that transduces the signal generated by binding of the receptor to its agonist [9]. With respect to the former locus, G protein coupled receptor kinases (GRKs) act in an agonist-specific manner to phosphorylate intracellular regions of the receptor thus permitting β arrestin binding that sterically inhibits G protein association with the receptor [1,45]. We have reported previously that experimental expression of GRKs in GnRH receptor-expressing heterologous cells (COS-1) suppressed GnRH-stimulated IP_3 production, and that co-expression of GRK2 and β -arrestin 2 suppressed GnRH receptor signaling more than that of either alone [23]. Stronger evidence that the GRK/ β arrestin paradigm may play a role in regulating GnRH receptor signaling is our recent finding that adenovirus-mediated gene transfer of GRK2 into normal pituitary gonadotropes suppressed GnRH-stimulated LH secretion and IP_3 production [31]. However, no evidence has been presented for a direct interaction between β -arrestin and the GnRH receptor.

With respect to the G protein as a locus for modulation of GnRH receptor signaling, we reported earlier that experimental expression of RGS3 but not RGS1, 2, or 4 in GnRH receptor expressing COS-1 cells suppressed GnRH-stimulated IP_3 production [9]. In the current report, we present evidence strengthening the hypothesis of a regulatory role for RGS3 in GnRH receptor signaling: adenovirus-mediated expression of RGS3 in normal pituitary gonadotropes profoundly inhibited GnRH-stimulated LH secretion and 3H -inositol phosphate accumulation. Arguing for the specificity of this effect is the stimulation of LH secretion by a calcium ionophore and the failure of LH stores and GnRH-receptor binding to be

affected by RGS3. Moreover, our finding that GnRH-stimulated IP_3 production was inhibited supports the locus of the RGS3 effect as residing at phospholipase C or earlier in the transduction pathway, most likely at the $G\alpha$ protein because of our studies both earlier [9] and here showing that RGS3 binds $Gq\alpha$ *in vitro*. Finally, the stronger inhibitory effect of RGS3T than RGS 3 on COS cell function was presumed to be true also for gonadotrope function and therefore was not tested here.

The determination of RGS specificity for receptor-G protein pairs are currently unknown; i.e., we and others have found that several RGSs interact with $Gq\alpha$ but only one, RGS3, has potent inhibitory activity on GnRH receptor signaling. For instance, RGS4 and RGS-GAIP [11], RGS3 [9], RGS2 [46], and RGS7 (our unpublished findings) all bind $Gq\alpha$, the established G protein that transduces GnRH receptor signaling [38]. Nevertheless, RGS2 and 4 [9], and RGS-GAIP and RGS7 (our unpublished data) are weak or null inhibitors of GnRH receptor signaling. A recent report seems to have clarified this issue: RGS4 must bind not only $Gq\alpha$ but also selected Gq -coupled receptors before it can inhibit receptor signaling [47,48]. Based on this finding, we propose that RGS3's binding to the GnRH receptor as well as to $Gq\alpha$ accounts for its specific inhibiting of GnRH receptor signaling.

Conclusions

The results of the current investigation as well as those presented earlier [31] nominate two molecular mechanisms as playing roles in setting the responsiveness level of GnRH receptor signaling; i.e., the RGS3 system acts at the G protein transducing step and the GRK/ β arrestin system acts at the level of the receptor. Future studies must address whether both, neither, or only one of these mechanisms are physiologically relevant.

Materials and Methods

cDNA transfection of COS-1 cells and measurement of IP_3 production

cDNA representing the rat GnRH receptor was cloned into pcDNA3 as described and validated previously [22,23]. cDNAs representing RGS3 and RGS3T (RGS3 amino acids 314–519) were cloned into the eukaryotic expression vector, rcCMV, as described [24]. COS-1 cells cultured as detailed before [23] were co-transfected with GnRH receptor cDNA and RGS3 or RGS3T cDNA using Lipofectamine (Life Technologies, Gaithersburg, MD) [23], and 72 h later, treated with 10^{-7} M GnRH-A for 0, 10, 20, or 30 sec before being collected for IP_3 measurements [22,23].

IP_3 measurements were performed on COS-1 cell cytosolic preparations using a radioreceptor assay in which

IP₃ and ³H-IP₃ compete for binding to IP₃ receptors prepared from calf cerebellum membranes [22,23].

RGS3 binding of G α -proteins *in vitro*

RGS3 protein fused to glutathione-S-transferase (RGS3-GST fusion protein) was produced in the pGEX-5x-1 system of Pharmacia as detailed previously [9]. ³⁵S-Met labeled G α -proteins were prepared *in vitro* using a transcription/translation protocol [9]. cDNAs for Gq α [25] and Gz α [26] were obtained from M. I. Simon; for Gs α (ref. No. 63315) and Gi2 α (ref. No. 63311) were obtained from the American Type Culture Collection (ATCC); for G α o [27] was obtained from Eva G. Neer; for Gi1 α , [28] from G. R. Post; and, for Gi3 α [29] from M. G. Farquhar. Binding studies of recombinant RGS3-GST fusion protein to ³⁵S-Met-G α -proteins were performed as detailed [9]. Glutathione-coupled beads were used to select ³⁵S-G α proteins bound to RGS3-GST, and were then eluted for separation by SDS/PAGE [9]. The amount and molecular size of ³⁵S-G α protein were determined using a Phosphor imaging device (Molecular Dynamics).

Preparation of Adeno-RGS3

Recombinant adenovirus containing RGS3 cDNA was prepared using procedures previously described in detail by Becker *et al.* [30] and by us [31]. Human RGS3 cDNA [24] was restricted from the pRC/CMV vector with EcoRI, and then subcloned into the corresponding site of the pACCMVpLpa plasmid. The proper orientation of the RGS3 cDNA was confirmed by nucleotide sequencing. The procedure for preparation of the adenovirus was co-transfection of a human embryonic kidney cell line (HEK 293) with the pACCMVpLpa plasmid and another plasmid (pJM17) containing most of the viral genome [30]. A relatively rare recombination of the two plasmids occurs in the HEK 293 cells that reconstitutes the adenoviral genome. The recombination event reconstituting adeno-RGS3 was confirmed using PCR analysis to detect the presence of RGS3 cDNA. Next, adeno-RGS3 was isolated by clonal selection in HEK 293 cells followed by a second PCR to confirm the presence of RGS3 cDNA. Finally, large-scale amplification and titering of adeno-RGS3 was performed in HEK 293 cells. This virus preparation was used for infection of rat pituitary cells [31].

Culture and infection of rat pituitary cells

Anterior pituitary glands were obtained from female Charles River CD rats that were maintained in accordance with the NIH Guide for the Care and Use of Laboratory Animals using an experimental protocol that had been approved by the Institutional Animal Care and Use Committee. The pituitaries were dispersed with trypsin as described before [32]. The mono-dispersed cells were plated into poly-L-lysine coated 60 mm plastic Petri dishes in DMEM/10% gelding horse serum containing

10⁻⁹ M estradiol to optimize the GnRH-responsiveness of the gonadotropes [33], and incubated overnight at 37°C in 8% CO₂-92% air.

Pituitary cells were infected using a volume of adeno-RGS3 or adeno- β galactosidase necessary to achieve the chosen multiplicity of infection (M.O.I.) diluted to 0.3 ml; this was further diluted with 1.2 ml of TS buffer (8.0 gm/L NaCl, 380 mg/L KCl, 100 mg/L Na₂HPO₄, 3.0 gm/L Tris HCl, 200 mg/L CaCl₂ · 2H₂O, 100 mg/L MgCl₂ · 6H₂O; pH 7.4). The pituitary cell culture medium was aspirated and replaced with the virus solution, and the cells were incubated at 37°C in a CO₂ incubator for approximately 72 h.

Next, the cells were collected by trypsinization and counted using a hemocytometer; then, they were checked for viability using trypan blue [31]. The cells were replated for 2 h at 37°C in DMEM -0.1% bovine serum albumin (BSA) and subjected to x-gal staining for determination of the fraction of cells infected by the virus [31], or to stimulation by GnRH-A for measurement of LH release.

GnRH-stimulated LH secretion

Pituitary cells that had been re-trypsinized 72 h after infection and then replated (100,000 cells/well in a 24-well poly-L-lysine coated plate) for a 2 h preincubation were subsequently treated with a GnRH agonist (1 ml of 10⁻⁷M D-Ala⁶ - des Gly¹⁰ - GnRH ethylamide; GnRH-A, Sigma, St. Louis, MO) or a calcium ionophore (A23187, Sigma) for 3 h as described by Conn *et al.* [34]. The medium was removed and centrifuged at 200 × g for 10 min to pellet any detached cells. The supernatant solution was either used immediately or stored at -20°C prior to RIA.

LH RIAs were performed using reagents and instructions provided by Dr. A. F. Parlow on behalf of the National Hormone and Pituitary Program, National Institute of Diabetes and Digestive and Kidney Diseases, NIH. Rat LH (NIDDK-rLH-l-9) was radioiodinated, the LH antiserum (NIDDK-anti-rLH-S-11) was prepared in rabbits, and the reference standard was NIDDK-rLH-RP3. The mean EC₅₀ of the standard curves (n = 10) was 0.59 ng with a coefficient of variation of 4.4%.

GnRH-stimulated ³H-inositol phosphate accumulation in pituitary cells

Total [³H] inositol phosphate accumulation was determined in [³H] myoinositol-labeled pituitary cells as described earlier [22]. At 48 h after infection of the pituitary cells, the incubation medium was removed and replaced with a balanced salt solution (10 mM Hepes, pH7.4, 135 mM NaCl, 4.5 mM KCl, 1.5 mM CaCl₂, 0.5 mM MgCl₂, 1.0 mM NaH₂PO₄, 5.6 mM glucose, 0.3%

BSA, and 10^{-9} M estradiol) containing 5 μ Ci of [3 H]-myoinositol/ml of medium. After a further 24 h, the pituitary cells were recovered by trypsinization, counted, and replated in balanced salt solution (400,000 – 500,000 cells/well in a 24-well plate) for a 2 h preincubation. Then, the cells were stimulated with GnRH-A (10^{-7} M for one hr) in the presence of 5 mM LiCl. [3 H]-inositol phosphate accumulation in the cells was then measured using ion exchange chromatography followed by liquid scintillation spectroscopy [22].

Immunoblots for RGS3

An antibody to hexa-histidine-tagged human RGS3T was prepared in chickens. RGS3T [24] is the carboxy terminal 206 amino acids (a.a. 314–519) of RGS3 and is represented by nt 1227–1847 of RGS3 cDNA (Genbank Accession #U27655). To prepare hexa-histidine amino terminally-tagged RGS3T, we modified RGS3T cDNA [24] using PCR with primers containing restriction sites (the 5' primer incorporated a Bam HI site, whereas the 3' primer bore an Nde 1 site). The PCR product was then cloned into the pET15b vector which carries an N-terminal Histag sequence followed by BamHI and Nde 1 cloning sites (Novagen Inc., Madison, WI). The resulting plasmid DNA was nucleotide-sequenced to confirm the presence of RGS3T cDNA. The cDNA was then used to transform *E. coli* of the BL21(DE3) strain. Protein induction was performed using isopropyl- β -D-thiogalactopyranoside (IPTG) as described by Novagen Inc. Inclusion bodies containing the protein were prepared and then solubilized in 6 M guanidine. The Histag RGS3T protein was purified on a Ni²⁺ resin using a Pharmacia Hi-Trap 1 ml Chelating Column (Pharmacia Biotech, Piscataway, NJ).

Antibodies to Histag RGS3T protein were prepared in chickens (Aves Labs, Inc., Tigard, OR). A chicken was injected with 145 μ g of RGS3T into the breast muscle on four separate occasions; the first injection was in complete Freund's adjuvant, whereas injections 2–4 were made in a 1:1 dilution of complete and incomplete Freund's adjuvant. One week after the last injection, 6 immune eggs were collected, and the IgY fraction purified from the 6 eggs as well as from 3 pre-immune eggs collected from the same hen.

Immunoblots for RGS3 expression in pituitary cells were performed as described previously by us [22,23]. In brief, rat pituitary cells at 72 h after adeno-RGS3 infection (5 M.O.I.) were collected by trypsinization, homogenized, and a protein determination made. Fifty μ g protein samples were heated in SDS-PAGE sample buffer containing β -mercaptoethanol and then electrophoresed on a 10% SDS-polyacrylamide gel. Separated proteins were electroblotted onto nylon membranes

(Millipore Corp., Bedford, MA) which were then incubated for 2 h in a blocking solution containing 5% non-fat dry milk in phosphate buffered saline containing 0.02% Tween-20. The primary antibody (chicken IgY, 62.5 μ g/ml) was diluted in blocking solution and incubated overnight at 4°C with the nylon membrane. Blots were then incubated for 2 h at room temperature in alkaline phosphatase-conjugated goat anti-chicken IgY (0.1 μ g/ml diluted in blocking solution; Aves Labs, Tigard, OR). Color development was achieved by incubating the membrane in substrate [(5-bromo-4-chloro-3-indolyl phosphate-nitrobluetetra-zolium chloride) (BCIP-NBT)].

Assay of LH contents in pituitary cells

For LH RIA measurements of cell contents, 1×10^5 anterior pituitary cells infected, or not, 72 h previously with adeno-RGS3 or adeno- β gal were trypsinized and plated for 2 h. LH was extracted from the cells [36] by removing and discarding the medium and adding 1 ml extraction buffer (150 mM NaCl, 50 mM Tris, 5 mM EDTA, and 1 mM bacitracin, pH 7.4) followed by freeze-thawing twice. After centrifugation, the supernatant was removed and subjected to LH RIA as described above.

Measurements of GnRH receptors by receptor radioassay (RRA)

About 3×10^6 pituitary cells infected, or not, 72 h previously with adeno- β gal or adeno-RGS3 were trypsinized, and cell membranes containing the GnRH receptors were prepared by placing the cells in a Dounce homogenizer (Kontes Co., Vineland, NJ) and disrupting them with 30 strokes of the pestle. The cell membranes were pelleted by centrifugation at $26,000 \times g$ and then resuspended in 10 mM Tris buffer. The GnRH RRA on the membranes was performed as described previously [22,23]. Cell membranes and 1×10^5 cpm [125 I]GnRH-A were incubated at 0°C for 90 min. Nonspecific binding was determined as counts per min bound in the presence of 10^{-6} M unlabeled GnRH-A. Bound and free [125 I]GnRH-A were separated by filtration. The filters were counted by γ -scintillation spectrometry.

Data analysis

The results are presented as the mean \pm SEM of at least three independent experiments unless indicated otherwise. The statistical tests were one-way or two-way analyses of variance with significant differences ($p < 0.05$) identified by the Student – Newman-Keuls method. Statistical analysis was performed using Sigma Stat Statistical Software for Windows (Jandel Scientific, San Rafael, CA).

Acknowledgements

Supported by NIH Grant I-R01-HD 34862.

References

- Hausdorff WP, Caron WP, Lefkowitz RJ: **Turning off the signal: desensitization of β -adrenergic receptor function.** *FASEB J* 1990, **4**:2881-2889
- Belchetz PE, Plant TM, Nakai EJ, Knobil E: **Hypophysial responses to continuous and intermittent delivery of hypothalamic gonadotropin-releasing hormone.** *Science* 1978, **202**:631-633
- Smith MA, Vale WW: **Desensitization to gonadotropin-releasing hormone observed in superfused pituitary cells on Cytodex beads.** *Endocrinology* 1981, **108**:752-759
- Jinnah HA, Conn PM: **GnRH-stimulated LH release from rat anterior pituitary cells in culture: refractoriness and recovery.** *Am J Physiol* 1985, **249**:E619-E625
- Clayton RN: **Gonadotropin-releasing hormone: its actions and receptors.** *J Endocrinol* 1989, **120**:11-19
- Hawes BE, Conn PM: **Development of gonadotrope desensitization to gonadotropin-releasing hormone (GnRH) and recovery are not coupled to inositol phosphate production or GnRH receptor number.** *Endocrinology* 1992, **131**:2681-2689
- Fink G: **Gonadotropin secretion and its control.** In: Knobil E, Neill JD (eds.), *The Physiology of Reproduction*. New York: Raven Press; 1988:1349-1377
- Conn PM, Huckle WR, Andrews WV, McArdle CA: **The molecular mechanism of action of gonadotropin releasing hormone (GnRH) in the pituitary.** *Rec Prog Horm Res* 1987, **43**:29-68
- Neill JD, Duck LW, Sellers JC, Musgrove LM, Scheschonka A, Druey KM, Kehrl JH: **Potential role for a regulatory of G protein signaling (RGS3) in gonadotropin-releasing hormone (GnRH) stimulated desensitization.** *Endocrinology* 1997, **138**:843-846
- Berman DM, Wilkie TM, Gilman AG: **GAIP and RGS4 are GTPase-activating proteins for the G1 subfamily of G protein α subunits.** *Cell* 1996, **86**:445-452
- Hepler JR, Berman DM, Gilman AG, Kozasa T: **RGS4 and GAIP are GTPase-activating proteins for Gq α and block activation of phospholipase C by γ -thio-GTP-Gq α .** *Proc Soc Natl Acad Sci, USA* 1997, **94**:428-432
- Yan Y, Chi PP, Bourne HR: **RGS4 inhibits Gq-mediated activation of mitogen-activated protein kinase and phosphoinositide synthesis.** *J Biol Chem* 1997, **272**:11924-11927
- Koelle MR, Horvitz HR: **EGL-10 regulates G protein signaling in the C. elegans nervous system and shares a conserved domain with many mammalian proteins.** *Cell* 1996, **84**:115-125
- Koelle MR: **A new family of G-protein regulators - the RGS proteins.** *Curr Opin Cell Biol* 1997, **9**:143-147
- Dohlman HG, Thorner JW: **Regulation of G protein-initiated signal transduction in yeast: paradigms and principles.** *Annu Rev Biochem* 2001, **70**:703-754
- Kehrl JH: **Heterotrimeric G protein signaling: roles in immune function and fine-tuning by RGS proteins.** *Immunity* 2001, **8**:1-10
- Ross EM, Wilkie TM: **GTPase-activating proteins for heterotrimeric G proteins: regulators of G protein signaling (RGS) and RGS-like proteins.** *Annu Rev Biochem* 2000, **69**:795-827
- DeVries L, Mousli M, Farquhar G: **GAIP, a protein that specifically interacts with the trimeric G protein G α i3, is a member of a protein family with a highly conserved core domain.** *Proc Natl Acad Sci, USA* 1995, **92**:11916-11920
- He W, Cowan CW, Wensel TG: **RGS9, a GTPase accelerator for phototransduction.** *Neuron* 1998, **20**:95-102
- Wang J, Ducret A, Tu Y, Kozasa T, Aebersold R, Ross EM: **RGSZ1, a Gz-selective RGS protein in brain. Structure, membrane association, regulation by Galphaz phosphorylation, and relationship to a Gz gtpase-activating protein subfamily.** *J Biol Chem* 1998, **273**:26014-26025
- Scheschonka A, Dessauer CW, Sinnarajah S, Chidiac P, Shi C-S, Kehrl J: **RGS3 is a GTPase-activating protein for Gi α and Gq α and a potent inhibitor of signaling by GTPase-deficient forms of Gq α and G11 α .** *Molec Pharmacol* 2000, **58**:719-728
- Neill JD, Sellers JC, Musgrove LC, Duck LW: **Epitope-tagged GnRH receptors heterologously expressed in mammalian (COS-1) and insect (Sf9) cells.** *Molec Cell Endocrinol* 1997, **127**:143-154
- Neill JD, Duck LW, Musgrove LC, Sellers JC: **Potential regulatory roles for G protein-coupled receptor kinases and β -arrestins in gonadotropin-releasing hormone receptor signaling.** *Endocrinology* 1998, **139**:1781-1788
- Druey KM, Blumer KJ, Kkang VH, Kehrl JH: **Inhibition of G-protein-mediated MAP kinase activation by a new mammalian gene family.** *Nature* 1996, **379**:742-746
- Strathmann M, Simon MI: **G protein diversity: a distinct class of alpha subunits is present in vertebrates and invertebrates.** *Proc Natl Acad Sci, USA* 1990, **87**:9113-9117
- Fong HK, Yoshimoto KK, Eversole-Cire P, Simon MI: **Identification of a GTP-binding protein alpha subunit that lacks an apparent ADP-ribosylation site for pertussis toxin.** *Proc Natl Acad Sci, USA* 1988, **85**(9):2066-3070
- Neer EJ: **Structural and functional studies of the Go protein.** *Soc Gen Physiologists Series* 1990, **45**:143-151
- Post GR, Brown JH: **G protein-coupled receptors and signaling pathways regulating growth responses.** *FASEB J* 1996, **10**(7):741-749
- DeVries L, Mousli M, Farquhar MG: **GAIP, a protein that specifically interacts with the trimeric G protein G α i3, is a member of a protein family with a highly conserved core domain.** *Proc Natl Acad Sci, USA* 1995, **92**:11916-11920
- Becker TC, Noel RJ, Coats WS, Gomez-Foix AM, Alam T, Gerard RD, Newgard CB: **Use of recombinant adenovirus for metabolic engineering of mammalian cells.** *Methods in Cell Biology. Academic Press*; 1994:161-189
- Neill JD, Musgrove LC, Duck LW, Sellers JC: **High efficiency method for gene transfer in normal pituitary gonadotropes: adenoviral-mediated expression of G protein-coupled receptor kinase 2 suppresses luteinizing hormone secretion.** *Endocrinology* 1999, **140**:2562-2569
- Smith PF, Luque EH, Neill JD: **Detection and measurement of secretion from individual neuroendocrine cells using a reverse hemolytic plaque assay.** *Methods Enzymol* 1986, **124**:443-465
- Neill JD, Smith PF, Luque EH, Munoz de Toro M, Nagy G, Mulchahey JJ: **Detection and measurement of hormone secretion from individual pituitary cells.** *Rec Prog Hormone Res* 1987, **43**:175-229
- Conn PM, Rogers DC, Sandhu FS: **Alteration of the intracellular calcium level stimulates gonadotropin release from cultured rat anterior pituitary cells.** *Endocrinology* 1979, **105**:1122-1127
- Cassina MP, Sellers JC, Neill JD: **Effect of cAMP on GnRH stimulated LH secretion from individual pituitary gonadotropes.** *Molec Cell Endocrinol* 1995, **114**:127-135
- Krey LC, Karmel F: **Progesterone modulation of gonadotropin secretion by dispersed rat pituitary cells in culture. I. Basal and gonadotropin-releasing hormone-stimulated luteinizing hormone release.** *Molec Cell Endocrinol* 1990, **68**:85-94
- Chatterjee TK, Eapen AK, Fisher RA: **A truncated form of RGS3 negatively regulates G protein-coupled receptor stimulation of adenylyl cyclase and phosphoinositide phospholipase C.** *J Biol Chem* 1997, **272**(24):15481-15487
- Hsieh KP, Martin TFJ: **Thyrotropin-releasing hormone and gonadotropin-releasing hormone receptors activate phospholipase C by coupling to the quanosine triphosphate-binding proteins Gq and G11.** *Molec Endocrinol* 1992, **6**:1673-1681
- Stojilkovic SS, Reinhart J, Catt KJ: **Gonadotropin-releasing hormone receptors: structure and signal transduction pathways.** *Endocr Rev* 1994, **15**:462-499
- Conn PM: **The molecular mechanism of gonadotropin-releasing hormone action in the pituitary.** In: Knobil E, Neill JD (eds.), *The Physiology of Reproduction*, 2nd ed. New York: Raven Press; 1994:1815-1832
- Karsch FJ, Bowen JM, Caraty A, Evans NP, Moenter SM: **Gonadotropin-releasing hormone requirements for ovulation.** *Biol Reprod* 1997, **56**:303-307
- Blake CA: **Simulation of the preovulatory luteinizing hormone (LH) surge after infusion of LH-releasing hormone in phenobarbital-blocked rats.** *Endocrinology* 1976, **98**:451-460
- Cassina MP, Neill JD: **Gonadotropin-releasing hormone-induced desensitization may account for the decrease in pituitary responsiveness after the preovulatory luteinizing hormone surge.** *Endocrinology* 1996, **137**:1057-1062
- Fink G: **The self-priming effect of LHRH: a unique servomechanism and possible cellular model for memory.** *Frontiers Neuroendocrinol* 1995, **16**:183-190
- Freedman NJ, Lefkowitz RJ: **Desensitization of G protein-coupled receptors.** *Rec Prog Hormone Res* 1996, **51**:319-351

46. Heximer SP, Watson N, Minder ME, Blumer KJ, Hepler JR: **RGS2/GOS8 is a selective inhibitor of Gq alpha function.** *Proc Natl Acad Sci, USA* 1997, **94**:14389-14393
47. Zeng W, Xu X, Popov S, Mukhopadhyay S, Chidiac P, Swistok J, Danho W, Yagaloff KA, Fisher SL, Ross EM, Muallem S, Wilkie TM: **The N-terminal domain of RGS4 confers receptor-selective inhibition of G protein signaling.** *J Biol Chem* 1998, **273**:34687-34690
48. Xu X, Zeng W, Popov S, Berman DM, Davignon I, Yu K, Yowe D, Offermanns S, Muallem S, Wilkie TM: **RGS proteins determine signaling specificity of G(q)-coupled receptors.** *J Biol Chem* 1999, **274**:3549-3556

Publish with **BioMed Central** and every scientist can read your work free of charge

"BioMedcentral will be the most significant development for disseminating the results of biomedical research in our lifetime."

Paul Nurse, Director-General, Imperial Cancer Research Fund

Publish with **BMC** and your research papers will be:

- available free of charge to the entire biomedical community
- peer reviewed and published immediately upon acceptance
- cited in PubMed and archived on PubMed Central
- yours - you keep the copyright

Submit your manuscript here:

<http://www.biomedcentral.com/manuscript/>



editorial@biomedcentral.com