

Spatial analysis and identification of environmental risk factors affecting the distribution of *Indoplanorbis* and *Lymnaea* species in semi-arid and irrigated areas of Haryana, India



A.K. Sangwan^{a,*}, B. Jackson^b, W. De Glanville^b, D.U. Pfeiffer^b, K.B. Stevens^b

^a Department of Veterinary Parasitology, Lala Lajpat Rai University of Veterinary and Animal Sciences, Hisar, India

^b Veterinary Epidemiology and Public Health Group, Department of Veterinary Clinical Sciences, Royal Veterinary College, University of London, London, United Kingdom

ARTICLE INFO

Article history:

Received 27 December 2015

Received in revised form 24 May 2016

Accepted 25 May 2016

Available online 8 June 2016

Keywords:

Lymnaea

Indoplanorbis

Spatial analysis

Risk factor

Haryana

India

ABSTRACT

Fasciolosis, amphistomosis and schistosomosis, transmitted by the freshwater snail species *Indoplanorbis* and *Lymnaea*, are important snail-borne diseases in India as they affect the entire spectrum of domestic animals causing substantial mortality and economic loss. Identifying any heterogeneity in the spatial distribution of these snail-borne diseases will allow for targeted disease control and efficient use of resources. The objectives of this study were threefold: (i) to describe and explore the spatial distribution of *Indoplanorbis* and *Lymnaea* in Rohtak and Jhajjar districts of Haryana, India (ii) to identify factors associated with occurrence of these freshwater snail species and (iii) to produce a map showing the predicted risk of occurrence of *Lymnaea* and *Indoplanorbis* spp. in the study area. Snails were collected from water bodies of 99 settlements out of a total of 453 in the study area. Kernel smoothing was used to generate a kernel ratio map while Kulldorff's spatial scan statistic was used to detect clusters of settlements with a high/low risk. Multivariable logistic regression showed that snails were almost ten times more likely to be present in rice-growing areas than in those not growing rice (OR 9.24) and that snails were less likely to be present with each 1 km increase in distance from a canal (OR 0.86). The regression model was used to produce a map illustrating the predicted risk of snail occurrence. Since the distribution of vector snails mirrors the distribution of snail-borne parasitic diseases, such spatial analysis helps to determine the relative risk of snail-infestation as well as snail-borne diseases' distribution and planning of control activities.

© 2016 The Authors. Published by Elsevier Ltd on behalf of World Federation of Parasitologists.

This is an open access article under the CC BY-NC-ND license (<http://creativecommons.org/licenses/by-nc-nd/4.0/>).

1. Introduction

Indoplanorbis and *Lymnaea* are common freshwater snail species in India which act as intermediate hosts of various trematode species causing fasciolosis, amphistomosis and schistosomosis in livestock. These diseases are important as they are widespread in India and affect livestock sector by causing substantial mortality and economic loss (Gupta and Singh, 2002; Dutt, 1980; Agrawal, 2012). Based on the 2012 livestock census, India has a livestock population of 190.90 million cattle, 108.70 million buffaloes, 65.06 million sheep and 135.17 million goats in addition to other minor species. These animals are reared under diverse agro-climatic and management conditions. There are numerous reports on the prevalence of the snail-borne trematode disease in ruminants

* Corresponding author.

E-mail address: Sangwan_arun@hotmail.com (A.K. Sangwan).

from different parts of India (Yadav et al., 2008; Garg et al., 2009; Yadav et al., 2007; Velusamy et al., 2004; Galdhar and Roy, 2005; Hassan et al., 2005; Satyanarayana et al.; Tariq et al., 2008; Varma et al., 1989; Agrawal, 2012) and on the prevalence of trematode infections in snails (Tigga et al., 2014; Jithendran and Krishna, 1990; Singh et al., 2009). However, prevalence of the snails and snail-borne diseases vary throughout India depending upon the suitability of the location for snail habitation.

The Haryana state, situated in north India, is mainly semi-arid, irrigated, agriculture based rural economy. The main freshwater snails found in the area are *Indoplanorbis* (*Indoplanorbis exustus*) and *Lymnaea* (*L. ymnaea luteola*, *Lymnaea acuminata* and *Lymnaea auricularia*) among others (Gupta et al., 1987; Chaudhri et al., 1982). The snail-borne diseases, particularly amphistomosis and fasciolosis are endemic in Haryana (Chaudhri et al., 1993; Gupta et al., 1985). The central areas of Haryana, composed of Rohtak and Jhajjar districts, represent regions with development-induced changes such as canal irrigation, rice cultivation and patches of water logging leading to spread of freshwater snails in these areas. These areas experience a sub-tropical, semi-arid, continental, monsoon climate characterized by hot summers, cool winters and a short rainy season. Annual rainfall for the area is approximately 450 mm with 80% of this falling during the rainy season (July to end of September). Due to its saucer-shaped topography, the area is prone to flooding despite its low rainfall. The area is mainly alluvial plain with soil texture varying from fine loam to sand. As the annual rainfall is low and of short duration, agricultural activities in these regions rely largely upon canal and tube-well irrigation. The ruminant livestock population of the area consists of approximately 515,000 buffaloes, 95,000 cattle, 51,000 sheep and 24,000 goats. However, based on anecdotal evidence, the distribution of both the trematode parasites and their vector snails is patchy suggesting that the parasite distribution is influenced by one or more environmental or agro-ecological factors. Therefore, this region was chosen as study area to represent semi-arid, irrigated landscape of Haryana having varying distribution of snails and snail-borne livestock diseases.

Parasites are found in specific locations where there are suitable environmental conditions for the host and vector or intermediate host. However, their distribution boundaries are not fixed in space and time and may fluctuate within and between years (Stensgaard et al., 2006). Various studies using geographic information systems (GIS), remote sensing (RS) and spatial analysis have been conducted (Rinaldi et al., 2006; Simoonga et al., 2009; Fuentes, 2006; Yang et al., 2005; Brooker, 2002) to enhance the understanding of the distribution of snails and snail-borne diseases. Mapping environmental features allows for the determination of risk factors associated with the parasites and identification of areas potentially at risk. Cringoli et al. (2004) utilized environmental features such as normalized difference vegetation index (NDVI), land cover, elevation, slope, aspect, and total length of rivers to predict the distribution of paramphistomosis in sheep in the southern Italian Apennines. Similarly, a GIS model for mapping the risk of fasciolosis in cattle and buffaloes in Cambodia was developed using subjectively weighted determinants of inundation, proximity to rivers, land use, slope, elevation, and the density of cattle and buffaloes (Tum et al., 2004). The model estimated that 28% of Cambodia's land area was potentially at risk of fasciolosis with areas of high and moderate risk concentrated in southern and central Cambodia. Temperature and rainfall data, together with soil conditions including ground water and forest cover were used to demonstrate the relative risk of transmission of *Fasciola hepatica* in Switzerland (Rapsch et al., 2008) while Zhang et al. (2008) developed a model to predict density of the snail *Oncomelania hupensis*, the intermediate host of *Schistosoma japonicum*, taking into account different environmental factors such as elevation, air and soil temperature, type of vegetation, mean height of preponderant vegetation and soil humidity. In such instances mapping the distribution of the vector (intermediate host) based on its climatic and environmental requirements provides a proxy risk map for disease distribution as the distribution of snail-borne parasitic diseases depends largely on the spatial distribution of suitable intermediate host snails (Stensgaard et al., 2006).

A major aim in the design of any disease control programme is to identify areas of high disease risk as targeting control efforts in these areas would have the greatest impact as well efficient use of resources. The objectives of this study were therefore three-fold: (i) to describe and explore the spatial distribution of *Indoplanorbis* and *Lymnaea* in Rohtak and Jhajjar districts of Haryana, (ii) to identify environmental factors associated with occurrence of the snail species and (iii) to produce a map showing the predicted risk of occurrence of *Lymnaea* and *Indoplanorbis* spp. in Rohtak and Jhajjar districts.

2. Methodology

2.1. Study design and study area

The study area comprised two districts of central Haryana in North India — Rohtak and Jhajjar (Fig. 1), covering a total area of 3652 km² and containing 453 villages and small towns (hereafter known as settlements). A cross-sectional study was performed using settlements as the epidemiological unit for assessing presence or absence of snails. A convenience sample of 99 settlements (22%), all approachable by a metalled road and evenly distributed throughout the study area, was selected for further investigation. The spatial scan statistic was used to assess whether or not sampled villages were randomly distributed throughout the area. The 99 sampled settlements were defined as the 'cases' and the remaining 354 unsampled settlements were defined as 'controls'. The scan statistic was performed using a Bernoulli probability model with 999 permutations and a circular scanning window.

2.2. Data collection

2.2.1. Snails

Each settlement in the sample population was visited once during the snail seasons (August to December) of 2007 and 2008 by a parasitologist. Snails were located visually and collected by hand/sieve as described for general survey of snails by WHO

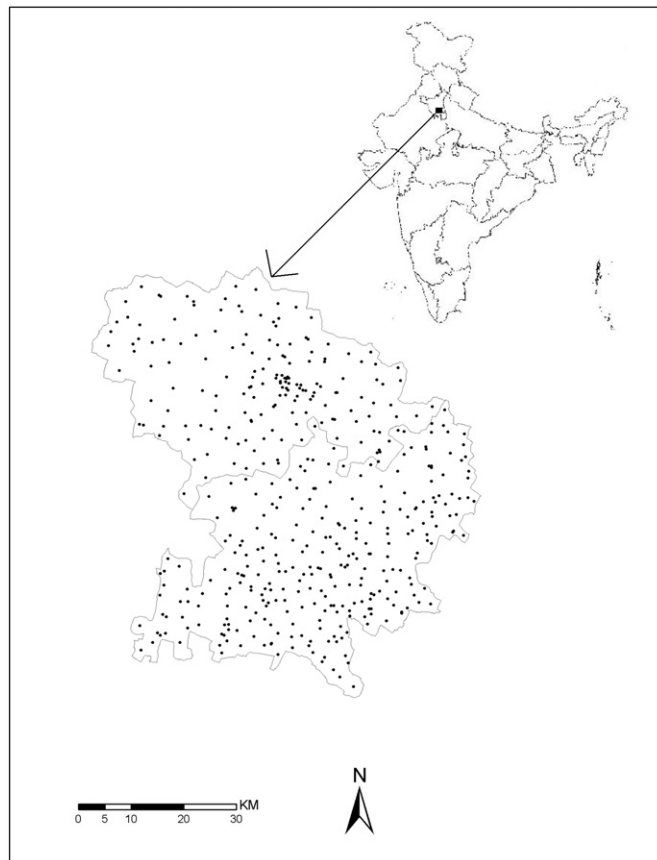


Fig. 1. Study area showing locations of all the settlements (•) in Rohtak (north) and Jhajjar (south) districts in the state of Haryana in India.

(1965). Multiple permanent water bodies, including ponds, canals, rice fields, lakes and water-logged areas, within the perimeter of each settlement, were searched at several points for snails of species *Indoplanorbis* or *Lymnaea*. At least 10 locations of the each water body were searched before accepting it as snail free. If at least one snail, of either *Indoplanorbis* or *Lymnaea* species, was collected from a water body, the settlement was considered positive for snails; settlements containing neither species were considered snail-free. To minimize the chances of false positive and negative sites, snail collection was only performed during the snail season when they are found in abundance being prolific breeders. Both species are easily identified by the naked eye and are sedentary in nature, all of which combines to minimize the possibility of false negative settlements.

2.2.2. Environmental (geographical and climatic) data

GIS layers of the study area boundary and settlement locations were obtained from the Haryana Space Application Centre (HARSAC), Hisar. Settlements were represented as points based on their centroid. Environmental variables which have been shown or hypothesized to influence freshwater snail distribution, and which varied within a fine spatial scale, were included in the model. In this study a fine spatial scale was defined as one which allowed variations in the different environmental variables to be identified at landscape level. Variation in landscape factors or variables discernible at landscape level may give rise to local variability in host or vector distributions, transmission patterns and disease risk.

GIS layers showing the location of all major canals and mean annual rainfall of the area were obtained from the [Resource Atlas of Haryana \(2004\)](#). Euclidean distance to the nearest canal was calculated as a raster map and the continuous variable rainfall was divided into three categories: 301–400 mm, 401–500 mm and 501–600 mm. The rainfall categories and cut-off values were pre-determined by the Resource Atlas of Haryana and based on the long-term average rainfall of Haryana state. Layers showing areas of rice cultivation, soil physiography and flood prone areas were obtained from the Haryana Remote Sensing Application Centre, Hisar, India. Areas of rice cultivation were extracted from the Linear Imaging Self Scanning Sensor (LISS-III) data of the Indian Remote Sensing (IRS) satellite P-6 (ResourceSat; spatial resolution 23.5 m), acquired during the rice-growing season of 2008. A 500 m buffer was created around all rice-growing areas in order to identify settlements within rice-growing areas as settlements were never inside the rice fields. A raster map of soil physiography was extracted from the Advanced Wide Field Sensor (AWiFS) data of IRS-P6 (ResourceSat; spatial resolution 56 m, date of pass: 13 November 2004). The main soil physiography in the area included old alluvial plains, aeo-fluvial plain, fluvio-aeolian plain and aeolian plain. Flood-prone areas were identified from Thematic Mapper TM data of Landsat 5 (date of pass: 24 September 1995), delineated based on the sharp contrast between water

spread and adjacent areas 20 days after initial flooding on 5th September 1995. This was the worst flood in the area since satellite images become available for such studies. Any settlement falling within a 500 m buffer zone of the 1995 flooded area was considered to lie within a flood-prone area. Spatial distributions of the environmental risk factors in the study area are shown in Fig. 2. Environmental variables such as land surface temperature were not included in this study as they did not vary substantially within the study area.

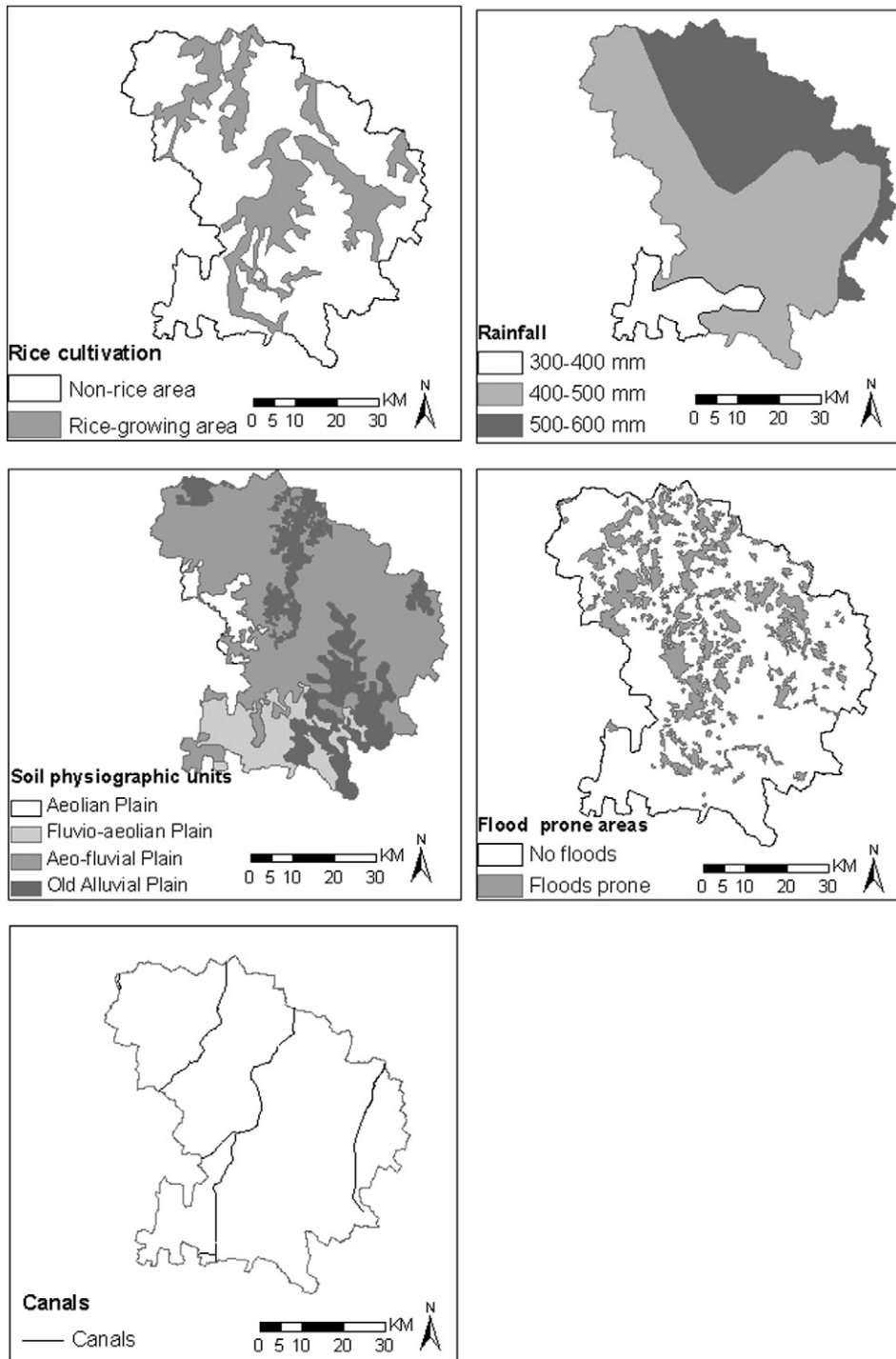


Fig. 2. Spatial distribution of environmental risk factors in the study area showing rice and non-rice areas, rainfall categories, soil physiographic units, flood prone areas and major canals.

2.3. Spatial analysis and modelling

2.3.1. Kernel-smoothed and kernel density ratio maps

All maps were produced in ArcGIS 9.3 (ESRI, Redlands, CA, USA). Kernel smoothing was used to map the density of snail-positive settlements and a kernel ratio map, illustrating the proportion of snail-positive settlements within a square kilometre, was created by dividing the kernel-smoothed surface of snail-positive locations by the kernel smoothed surface of all locations sampled. A bandwidth of 10 km and an output cell size of 250 m² were used to create all kernel-smoothed maps.

2.3.2. Cluster detection

Kulldorff's spatial scan statistic (Kulldorf, 1997; Kulldorf, 2009) was used to detect clusters of settlements with a high or low risk of being positive for snails. The statistic was implemented in SaTScan v8 (www.satscan.org) using a Bernoulli probability model with 999 permutations. An elliptical scanning window, set to contain a maximum of 50% of the population at risk, was used to simultaneously scan for clusters of settlements with either a high or low risk of snail presence.

2.3.3. Identification of risk factors and creation of risk map

All statistical analyses were conducted using SAS 9.2 (SAS Institute Inc., Cary, NC, USA). The locations of all sampled settlements were superimposed on the raster maps of the five environmental variables (mean annual rainfall, distance to nearest canal, soil physiography, and being within rice-growing or flood-prone areas) and the relevant environmental data extracted for each location using the intersect-point tool available as part of Hawth's Analysis Tools for ArcGIS (<http://www.spatial ecology.com/htools/tool desc.php>). The proportion of settlements positive and negative for snails was determined for all levels of categorical variables, together with the mean (\pm standard deviation) distance to canal.

A mixed-effects multivariable logistic regression model, with district as a random effect and an exponential spatial covariance structure, was used to investigate associations between snail presence and the five environmental variables. A backward stepwise approach was implemented and each variable was removed in turn starting with the variable with the highest p-value until only

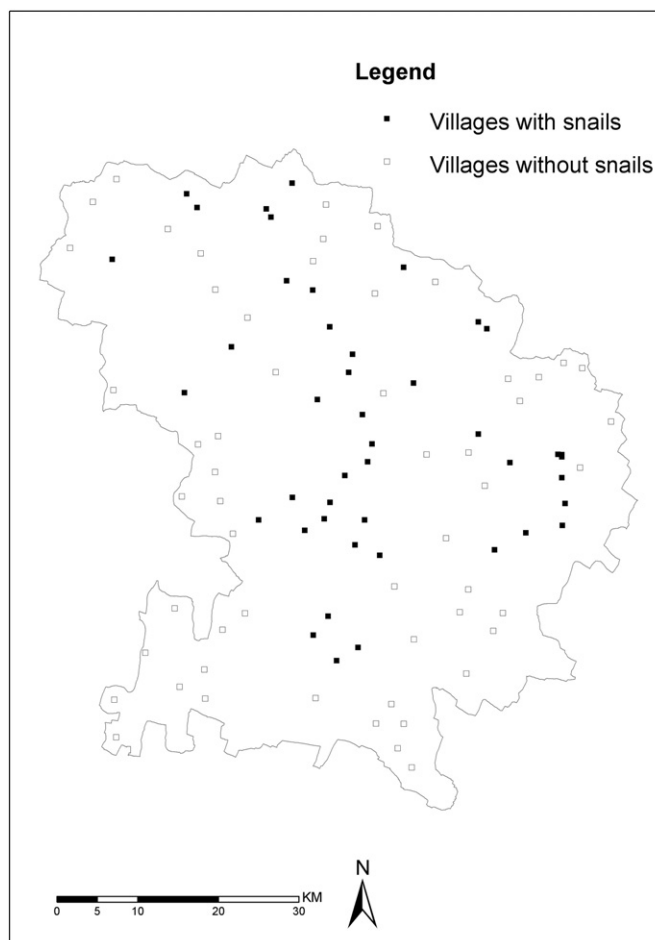


Fig. 3. Location of sampled settlements with (■) and without (□) *Indoplanorbis* and/or *Lymnaea* spp.

those with p-values ≤ 0.05 remained. The effect of removing each variable was considered by examining the change to the estimates, standard errors and p-values of the remaining variables. The stability of the final model was assessed by returning eliminated variables to the model individually and examining the change to the estimates, standard errors and p-values of the final model variables. In order to determine whether there was any small-scale (second-order) spatial variation in the data a semivariogram of the model residuals, with a simulation envelope based on 99 Monte Carlo permutations, was produced using R software together with the geoR and geoRglm packages (Ribeiro et al., 2003). The semivariogram was visually appraised to determine the existence of significant spatial dependency between settlements and the distance up to which snail-positive settlements were correlated. The final regression model equation was applied to the relevant environmental layers to generate a map of the predicted risk of snail presence in the study area.

3. Results

3.1. Distribution of sampled settlements

The spatial scan statistic showed the 99 sampled settlements to be randomly distributed throughout the study area ($p > 0.05$).

3.2. Prevalence of settlements with snails

Forty-four of the 99 settlements sampled (Fig. 3) were found to be infested with *Indoplanorbis*, *Lymnaea* or both species resulting in a prevalence of settlements with snails of 44% (95% CI = 35–53%). There were significant differences in the characteristics of settlements with and without *Indoplanorbis* and/or *Lymnaea* spp. (Table 1). In general, snail-positive settlements received between 400 and 600 mm of rainfall annually, were located on aeofluvial soils, within 4.1 km of a canal and within rice-growing areas or areas prone to flooding.

3.3. Density of snail-positive settlements

A kernel-smoothed map showed areas with the highest density of settlements with snails present were in the centre and east of the study area (Fig. 4(a)), while the kernel ratio map (Fig. 4(b)) identified a more extensive high-risk area in the centre of the region, together with small areas in the east and northern regions of the study area.

3.4. Clusters of settlements with snails

A high-risk cluster of snail-positive settlements was detected in the centre of the study area (relative risk = 3.12; $p = 0.001$) and a low-risk cluster in the south-west of the region (relative risk = 0; $p = 0.029$). The locations of these clusters are mapped in Fig. 5 and their characteristics presented in Table 2.

3.5. Identification of risk factors for snail-positive settlements

The final multivariable logistic regression model (Table 3) contained two variables: rice cultivation ($p < 0.0001$) and distance from canal ($p = 0.025$). The corresponding odds ratios showed that snails were almost ten times more likely to be present in rice-growing areas compared to non-rice-growing areas (OR = 9.24, 95% CI 3.40–25.09) and that snails were less likely to be

Table 1
Characteristics of settlements in Haryana, India with and without *Indoplanorbis* and/or *Lymnaea* spp.

Variable	Frequency of snail sampled settlements		p-Value
	Positive for snails (n (%))	Negative for snails (n (%))	
Soil physiography			<0.0001
Old alluvial	6 (33.3)	12 (66.6)	
Aeo-fluvial	37 (56.9)	28 (43.1)	
Fluvio-aeolian	1 (9.1)	10 (90.9)	
Aeolian	0 (0)	5 (100)	
Rainfall (mm)			<0.0001
300–400	1 (12.5)	7 (87.5)	
400–500	25 (44.6)	31 (55.4)	
500–600	18 (51.4)	17 (48.6)	
Flood status			<0.0001
Flood-prone area (based on the last worst floods in 1995)	33 (66.0)	17 (34.0)	
Area not prone to flooding	11 (22.4)	38 (77.6)	
Land use			<0.0001
Rice-growing area	32 (76.2)	10 (23.8)	
Non-rice growing area	12 (21.1)	45 (78.9)	
Distance from canal (km) (mean \pm sd)	4.1 \pm 3.6	7.7 \pm 4.5	

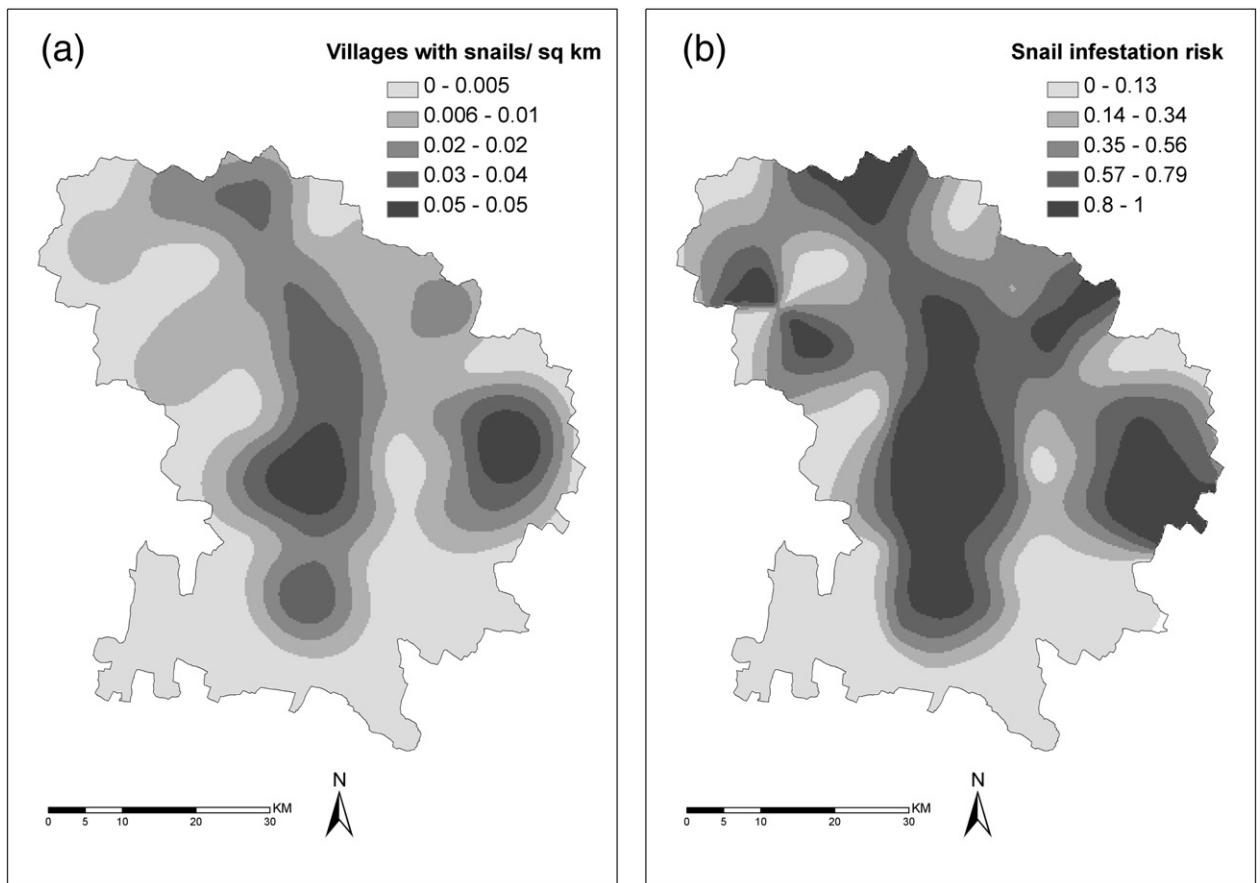


Fig. 4. (a) Kernel smoothed intensity of settlements with *Indoplanorbis* and/or *Lymnaea* spp. (250 m grid cells, 10 km bandwidth) and (b) ratio of kernel smoothed intensities of settlements with *Indoplanorbis* and/or *Lymnaea* spp. to all settlements sampled (250 m grid cells, 10 km bandwidth).

present with each 1 km increase in distance from the nearest canal (OR = 0.86, 95% CI 0.75–0.98). In addition, there was no evidence of significant spatial dependency among the model residuals (Fig. 6). The risk map (Fig. 7) generated from the final logistic regression model showed areas with the highest risk of snails being present to be in the centre, east and north-north-west of the study area.

4. Discussion

Spatial distribution of freshwater snails is determined largely by environmental factors which influence the abundance of water in an area, such as proximity to water bodies, soil texture, temperature and rainfall, land use, vegetation and flood risk. Such landscape factors generally vary at a finer spatial scale and give rise to local variability in host and vector distributions, transmission patterns and disease risk. This study showed that, within the Haryana districts of Rohtak and Jhajjar, the freshwater snail species, *Indoplanorbis* and *Lymnaea*, are more likely to be present in areas growing rice compared to areas where rice is not grown (OR = 9.24) and that snails are less likely to be present with each 1 km increase in distance from the nearest canal (OR = 0.86). Both extraction and risk mapping showed the central, eastern and north-north-eastern regions of the study area had both the highest actual and predicted risk of snail occurrence. In addition, a cluster of settlements with a high risk of snail occurrence was identified in the centre of the study area. Conversely, the south-west and south-east corners of the study area had a low risk of snail occurrence. The fact that a high risk cluster of snail-positive settlements occurred in an area estimated to be high risk by the mixed-effects multivariable logistic regression model provides a form of validation for the accuracy of the model. However, just because clusters were not identified in the other smaller areas predicted to be high risk does not render the model inaccurate. Areas predicted to be high risk may in fact never develop clusters of snail-positive settlements for one or more reasons including human interventions and short-term fluctuations in the population dynamics of snails. Instead, identification of these areas by the model allows control measures to be put in place in order to prevent any disease clusters occurring there.

The low-risk area identified in the south-western region (Fig. 5) consists mainly of aeolian and fluvio-aeolian plains with sand dunes making it unsuitable for rice cultivation through canal irrigation. The low-risk area in the south-east (Fig. 4(b)) is unsuitable for rice-growing due to its paucity of quality irrigation water. All these factors contribute towards these areas being



Fig. 5. Location of significant ($p < 0.05$) elliptical clusters of settlements with a high risk (small ellipse) or low risk (large ellipse) of *Indoplanorbis* and/or *Lymnaea* spp. occurrence.

unsuitable as snail habitats. Conversely, the central area is a suitable habitat for snails as the soil physiography, and presence of irrigation canals and rice paddies in the centre of Rohtak and Jhajjar districts make this area more suitable for snails.

Most of the earlier studies predicting spatial distribution of snails and snail-borne diseases (Yilma and Malone, 1998; Brooker et al., 2001; Malone et al., 2001; Stensgaard et al., 2006; Fuentes, 2006; Rapsch et al., 2008) covered wider areas than the current study and used a range of environmental, climatic and geographical variables. However, this study used local details such as land-use patterns of rice-growing areas and location of irrigation canals to characterize the risk of snail infestation. Variations in landscape factors may give rise to local variability in host or vector distributions and transmission patterns and ultimately in disease risk. Thus, studying variables at a local scale allows for more accurate identification of small changes in risk.

The possibility of sampling bias arose in this study as choice of sampling sites was based on accessibility and geographical coverage of the entire area. Ninety-nine settlements were sampled from a total of 453 settlements (i.e. 22%). If this selection process had resulted in a study population that was not randomly distributed in space, the results of the study would not be applicable to other areas. However, the results of the spatial scan statistic showed there were no significant clusters of the sampled settlements and thus, the sampled settlements are assumed to be spatially representative of all settlements in the area.

Although only 22% (99/453) of settlements were sampled, this number was limited by logistical considerations. The two districts under investigation - Rohtak and Jhajjar - covered a total area of 3652 km² and, owing to the distances travelled between settlements, driving conditions in these regions to reach water bodies and the time spent sampling, only a few settlements could

Table 2

Details of the significant ($p < 0.05$) spatial clusters identified by the elliptical spatial scan statistic illustrated in Fig. 4.

Cluster	Observed cases	Expected cases	Total settlements in cluster	Relative risk	p-Value
High risk cluster	18	8	18	3.12	0.001
Low risk cluster	0	7.11	16	0	0.029

Table 3

Variables associated with the occurrence of *Lymnaea* and *Indoplanorbis* species in water bodies within settlements in the districts of Rohtak and Jhajjar in the state of Haryana in India.

Variable	Odds ratio (OR)	95% CI	p-Value
Rice-growing area	9.24	3.44–25.09	<0.0001
1 km increase in distance from canal	0.86	0.75–0.98	0.025

be visited and sampled in a day. In addition, we were restricted to the snail season of August to early December. A greater number of settlements could have been sampled if we had chosen to visit ones close together but this would have introduced sampling bias and increased the probability of the sampled settlements being clustered rather than distributed throughout the study area. As a result of choosing to have a smaller sample that was evenly distributed throughout the study area and representative of all environmental conditions in the region rather than a large sample which was clustered, we have ensured that our results can be generalized to other regions.

The sensitivity and specificity of detecting and identifying the snails are important issues in such studies. For general surveys of snails like this one, the emphasis is on a widespread and intensive search, and there is no reason to determine the snail population densities or to make any other quantitative measurement. Consequently, no specific collection techniques need be used (WHO, 1965). The method usually involves a visual search. However, the issues of sensitivity, specificity and validity are very important when specific snail collection methods (e.g. scooping or snail collection per square metre) are used to determine snail density in a water body, study the natural history or population dynamics of snails or evaluate the efficacy of snail control measures. This survey consisted of gross collection and visual identification of snails. Although, both species are abundant during snail season (August to early December), easily identified by the naked eye and measure more than a centimetre in length, a number of precautions were taken to improve the validity of snail collection and identification. For example, the survey was conducted only during the snail season because these snails are prolific breeders and unlikely to be missed during this season. However, during other seasons they may less numerous or undergo hibernation or aestivation and thus can be missed by visual appraisal. Even though identification of *Indoplanorbis* and *Lymnaea* up to genus level is simple and undemanding, as the correct identification of common snails of the study area can be more complex, an experienced parasitologist conducted all surveys, thus minimizing the risk of misclassifying the snail species.

The results from this study can assist in the cost effective planning and execution of a regionally-adapted snail control or snail avoidance strategy. Improved diagnostic facilities and prompt chemotherapy treatment in the high-risk areas will help to reduce the harmful effects of the parasites on livestock health. This model can be applied to larger areas with similar environmental conditions thus extending the benefits of such a study. However, limitations and biases of the study should be kept in mind when applying this model. For example, settlements with and without snails were identified on the basis of a single visit and the investigation of one or more water bodies within the settlement; not all water bodies within a settlement were checked as these settlements are dotted with small ponds. Furthermore, since the distribution and density of snails depends on a location's status in preceding years, temporal effects should also be considered (Yang et al., 2008). In addition to the environmental variables

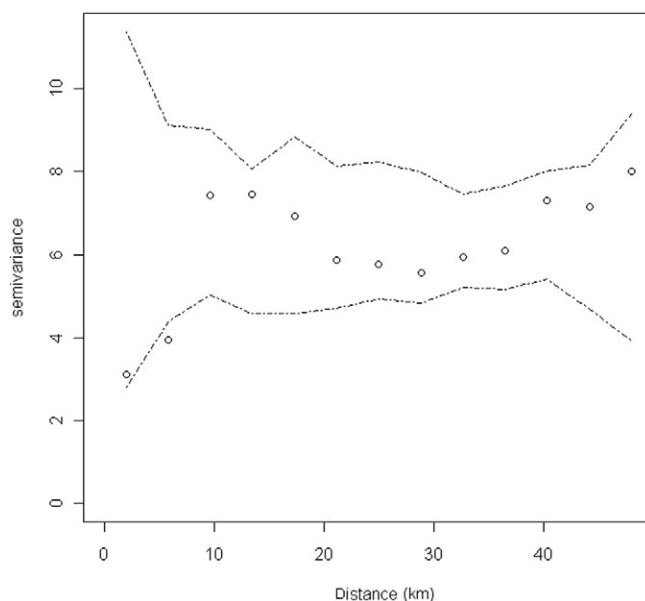


Fig. 6. Empirical semivariogram with Monte Carlo simulation envelope (dotted lines) of the residuals of the final multivariable mixed-effects regression model.

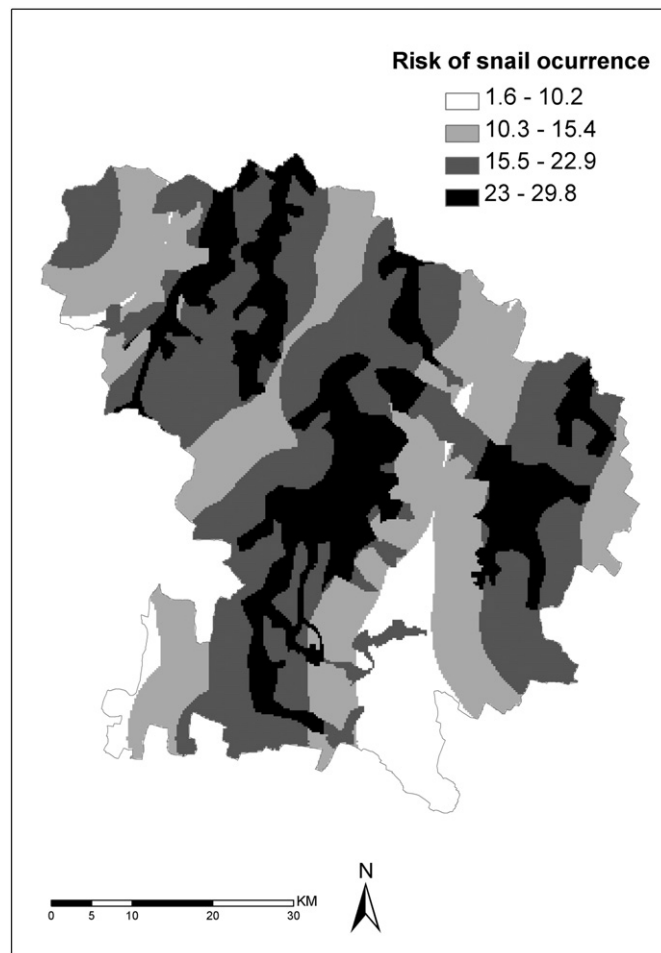


Fig. 7. Map showing predicted risk of occurrence of *Lymnaea* and *Indoplanorbis* spp. in Rohtak and Jhajjar districts of Haryana, India.

considered in this study, other variables such as human intervention, the presence of snail-suitable water vegetation, groundwater quality and availability, and socio-economic factors should be taken into account in the prediction of snail distribution. Due to the project limitations, the model was not evaluated by further field surveys that would have been still better than the present reliance on the other evidences like extract mapping using kernel density ratio map as well as cluster detection by spatial scan statistic. However, the matching of actual and predicted risk of snail occurrence along with the detection of high risk cluster of snail-positive settlements in the area estimated to be high risk by the regression model support the accuracy of the model for prediction.

5. Conclusion

This study showed that within the semi-arid and irrigated districts of Rohtak and Jhajjar, India, freshwater snails are more likely to be present in areas growing rice compared to areas where rice is not grown (OR = 9.24) and are also less likely to be present with increased distance from the nearest canal (OR = 0.86). The central, eastern and north-north-eastern parts of the two districts were shown to have the highest risk of snail occurrence with the south-west and south-east having the lowest risk. Spatial scan statistics and visualization by the kernel density estimation also highlighted this heterogeneity in the snail distribution. Since the distribution of snail vectors mirrors the distribution of snail-borne parasitic diseases, information from studies such as this one can assist in the planning and implementation of both snail and snail-borne diseases control activities.

Acknowledgements

The authors would like to thank the Commonwealth Scholarship Commission for providing a Commonwealth Academic Staff Fellowship to the senior author AKS and CCS Haryana Agricultural University, Hisar, for the necessary permission to avail it. Thanks also go to Haryana Space Application Centre (HARSAC) Hisar for providing several of the GIS layers used in the analysis.

References

- Agrawal, M.C., 2012. Schistosomes and Schistosomiasis in South Asia. Springer.
- Brooker, S., 2002. Schistosomes, snails and satellites. *Acta Trop.* 82, 209–216.
- Brooker, S., Hay, S.I., Issae, W., Hall, A., Kihamia, C.M., Lwambo, N.J.S., et al., 2001. Predicting the distribution of urinary schistosomiasis in Tanzania using satellite sensor data. *Tropical Med. Int. Health* 6, 998–1007.
- Chaudhri, S.S., Gupta, R.P., Yadav, C.L., 1982. A note on the bionomics of some aquatic snails of Haryana State. *Haryana Vet.* 21, 60–64.
- Chaudhri, S.S., Gupta, R.P., Kumar, S., Singh, J., Sangwan, A.K., 1993. Epidemiology and control of *Fasciola gigantica* infection of cattle and buffaloes in eastern Haryana, India. *Indian J. Anim. Sci.* 63, 600–605.
- Cringoli, G., Taddei, R., Rinaldi, L., Veneziano, V., Musella, V., Cascone, C., et al., 2004. Use of remote sensing and geographical information systems to identify environmental features that influence the distribution of paramphistomiasis in sheep from the southern Italian Apennines. *Vet. Parasitol.* 122, 15–26.
- Dutt, S.C., 1980. Paramphistomes and Paramphistomiasis of Domestic Ruminant in India. PAU Press, Punjab Agricultural University, Ludhiana, India.
- Fuentes, M.V., 2006. Remote sensing and climate data as a key for understanding fasciolosis transmission in the Andes: review and update of an ongoing interdisciplinary project. *Geospat. Health* 1, 59–70.
- Galdhar, C.N., Roy, S., 2005. Studies on prevalence of bovine paramphistomiasis in Chattisgarh state. *Indian Vet. J.* 82, 938–940.
- Garg, R., Yadav, C.L., Kumar, R.R., Banerjee, P.S., Vatsya, S., Godara, R., 2009. The epidemiology of fasciolosis in ruminants in different geo-climatic regions of north India. *Trop. Anim. Health Prod.* 41, 1695–1700.
- Gupta, S.C., Singh, B.P., 2002. Fasciolosis in cattle and buffaloes in India. *J. Vet. Parasitol.* 16, 139–146.
- Gupta, R.P., Chaudhri, S.S., Ruprah, N.S., Yadav, C.L., 1985. Epizootiology of paramphistomiasis in Haryana State. *Indian J. Anim. Sci.* 55, 14–19.
- Gupta, R.P., Yadav, C.L., Ruprah, N.S., 1987. Studies on the bionomics of some aquatic snails and their cercarial fauna of Haryana State. *Indian Vet. Med. J.* 11, 77–84.
- Hassan, S.S., Kaur, K., Joshi, K., Juyal, P.D., 2005. Epidemiology of paramphistomiasis in domestic ruminants in different districts of Punjab and adjoining areas. *J. Vet. Parasitol.* 19, 43–46.
- Jithendran, K.P., Krishna, L., 1990. Fresh water aquatic snails with larval trematodes in Kangara Valley, Himachal Pradesh. *J. Vet. Parasitol.* 4 (2), 51–53.
- Kulldorf, M., 1997. A spatial scan statistic. *Commun. Stat. Theory Methods* 26, 1481–1496.
- Kulldorf, M., 2009. SaTScan V 8.0: Software for the Spatial and Space–Time Scan Statistics. Information Management Services, Inc. (Available from: <http://www.satscan.org>).
- Malone, J.B., Yilma, J.M., McCarroll, J.C., Erko, B., Mukaratirwa, S., Zhou, X.N., 2001. Satellite climatology and the environmental risk of *Schistosoma mansoni* in Ethiopia and east Africa. *Acta Trop.* 79, 59–72.
- Rapsch, C., Dahinden, T., Heinzmann, D., Torgerson, P.R., Braun, U., Deplazes, P., et al., 2008. An interactive map to assess the potential spread of *Lymnaea truncatula* and the free-living stages of *Fasciola hepatica* in Switzerland. *Vet. Parasitol.* 154 (3–4), 242–249.
- Resource Atlas of Haryana, 2004. State Natural Resource Data Management System (NRDMS) Centre. Haryana State Council for Science & Technology, Chandigarh, India.
- Ribeiro, P.J., Christensen, O.F., Diggle, P.J., 2003. geoR and geoRglm: Software for model-based geostatistics. Proceedings of the 3rd International Workshop on Distributed Statistical Computing (March 20–22; Vienna, Austria).
- Rinaldi, L., Musella, V., Biggeri, A., Cringoli, G., 2006. New insights into the application of geographical information systems and remote sensing in veterinary parasitology. *Geospat. Health* 1, 33–47.
- Satyanarayana, A., Babu A.P., Kumar, U., Rao, P., 2016. A prevalence of paramphistomes in the coastal area of Andhra Pradesh. *Indian Vet. J.*
- Simoonga, C., Utzinger, J., Brooker, S., Vounatsou, P., Appleton, C.C., Stensgaard, A.S., et al., 2009. Remote sensing, geographical information system and spatial analysis for schistosomiasis epidemiology and ecology in Africa. *Parasitology* 136, 1683–1693.
- Singh, A., Srivastava, S., Shekhar, C., Singh, J., 2009. Prevalence of trematodes in bovines and snails. *Indian Vet. J.* 86, 206–207.
- Stensgaard, A.S., Jorgensen, A., Kabatereine, N.B., Rahbek, C., Kristensen, T.K., 2006. Modeling freshwater snail habitat suitability and areas of potential snail-borne disease transmission in Uganda. *Geospat. Health* 1, 93–104.
- Tariq, K., Chisti, M.Z., Ahmad, F., Shawi, A.S., 2008. The epidemiology of paramphistomiasis of sheep (*Ovis aries* L.) in the north west temperate Himalayan region of India. *Vet. Res. Commun.* 32, 383–391.
- Tigga, M.N., Bauri, R.K., Deb, A.R., Kullu, S.S., 2014. Prevalence of snail's intermediate host infected with different trematodes cercariae in and around Ranchi. *Vet. World* 7 (8), 630–634.
- Tum, S., Puotinen, M.L., Copeman, D.B., 2004. A geographic information systems model for mapping risk of fasciolosis in cattle and buffaloes in Cambodia. *Vet. Parasitol.* 122 (2), 141–149.
- Varma, T.K., Prasad, A., Malviya, H.C., Dwivedi, P., 1989. Incidence of paramphistome infections in ruminants at Bareilly. *Indian J. Anim. Sci.* 59 (2), 231–234.
- Velusamy, R., Singh, B.P., Gupta, S.C., Chandra, D., 2004. Prevalence of *Fasciola gigantica* infection in buffaloes and its snail intermediate host at Bareilly. *J. Vet. Parasitol.* 18, 171–173.
- WHO, 1965. Snail Control in the Prevention of Bilharziasis. Monograph Series Vol. No. 50. World Health Organization, Geneva, p. 200 (Accessible at: http://whqlibdoc.who.int/monograph/WHO_MONO_50_%28part5%29.pdf).
- Yadav, C.L., Garg, R., Kumar, R.R., Banerjee, P.S., Godara, R., 2007. Seasonal dynamics of *Fasciola gigantica* infection in cattle and buffaloes in Uttaranchal, India. *Indian J. Anim. Sci.* 77, 133–135.
- Yadav, C.L., Garg, R., Kumar, R.R., Vatsya, S., 2008. Prevalence of fasciolosis in ruminants in national capital region, Delhi. *Indian J. Anim. Sci.* 78, 269–271.
- Yang, G.J., Vounatsou, P., Zhou, X.N., Utzinger, J., Tanner, M., 2005. A review of geographic information system and remote sensing with applications to the epidemiology and control of schistosomiasis in China. *Acta Trop.* 96, 117–129.
- Yang, K., Wang, X.H., Yang, G.J., Wu, X.H., Qi, Y.L., Li, H.J., et al., 2008. An integrated approach to identify distribution of *Oncomelania hupensis*, the intermediate host of *Schistosoma japonicum*, in a mountainous region in China. *Int. J. Parasitol.* 38, 1007–1016.
- Yilma, J.M., Malone, J.B., 1998. A geographic information system forecast model for strategic control of fasciolosis in Ethiopia. *Vet. Parasitol.* 78, 103–127.
- Zhang, Z., Ong, S., Peng, W., Zhou, Y., Zhuang, J., Zhao, G., et al., 2008. A model for the prediction of *Oncomelania hupensis* in the lake and marshland regions, China. *Parasitol. Int.* 57 (2), 121–131.