



Published in final edited form as:

*Med Chem (Los Angeles)*. 2015 February ; 5(2): 077–080. doi:10.4172/2161-0444.1000246.

## Inositol Analysis by HPLC and Its Stability in Scavenged Sample Conditions

Robert M Ward<sup>1,\*</sup>, John Sweeley<sup>2</sup>, and Ralph A Lugo<sup>3</sup>

<sup>1</sup>Divisions of Neonatology and Pediatric Pharmacology, Adjunct Professor, Pharmacology/Toxicology, University of Utah, 295 Chipeta Way, Salt Lake City, UT 84108, USA

<sup>2</sup>Department of Pediatrics, University of Utah, 417 Wakara Way, Salt Lake City, UT 84108, USA

<sup>3</sup>Department of Pharmacy Practice, Gatton College of Pharmacy, East Tennessee State University, Johnson City, Tennessee 37614, USA

### Abstract

Inositol is a 6-carbon sugar alcohol that has been shown in limited studies to reduce retinopathy of prematurity and chronic lung disease in premature newborns. Developmentally it has a high concentration in the fetus that decreases with gestational age. It is transported from the fetus to the mother across the placenta. Although studies are underway to determine inositol kinetics in premature newborns treated therapeutically, the effects of gestational age, age after birth, and feeding on inositol concentrations after birth have not been studied adequately in premature newborns. Such studies would minimize blood removal and trauma in preterm newborns by using plasma samples scavenged from the clinical laboratory to measure inositol after birth, if they remain stable. This report describes a new high pressure liquid chromatographic assay for inositol and its use to study the stability of inositol in conditions of storage that might be encountered within the clinical laboratory. The assay is linear from 0 to 1000 Mm with a lower limit of quantitation of 50  $\mu$ M. Inositol in human plasma remains stable in refrigeration and at room temperature for up to 14 days and is not affected by storage in red blood cells that are intact or lysed. Anticoagulants encountered in clinical blood samples do not interfere with the chromatograms. Thus, it is feasible to measure the changes in inositol concentrations in plasma from preterm newborns that is scavenged from the clinical laboratory after storage for as long as 14 days.

### Background

In previous studies among preterm infants with RDS, intravenous myo-inositol (referred herein as inositol) reduced death, broncho pulmonary dysplasia and retinopathy of prematurity [1-3]. Inositol is endogenously synthesized from glucose, and catabolized by inositol oxidase in the renal cortex, an enzyme with low activity at birth [4,5]. Inositol is a6-

This is an open-access article distributed under the terms of the Creative Commons Attribution License, which permits unrestricted use, distribution, and reproduction in any medium, provided the original author and source are credited.

\*Corresponding author: Robert M Ward, MD, FAAP, FCP, Professor, Pediatrics, Divisions of Neonatology and Pediatric Pharmacology, Adjunct Professor, Pharmacology/Toxicology, University of Utah, 295 Chipeta Way, Salt Lake City, UT 84108, USA, Tel: 801-581-4178; Fax: 801-585-7395; robert.ward@hsc.utah.edu.

carbon, non-reducing sugar alcohol that is a component of surfactant and also participates widely in intracellular signaling as phospho-inositides [6,7]. It has the same molecular formula and thus molecular weight as glucose. The most commonly occurring form is *cis*-1,2,3,5-*trans*-4,6-cyclohexanehexol, known as myo-inositol. The function of inositol in utero is not clear. Fetal levels are high early in pregnancy and fall with increasing gestation; inositol is transported to the mother across the placenta [8,9]. The pharmacokinetics of inositol during treatment of preterm newborns is being investigated, but the physiologic changes in inositol after preterm birth and their relation to intake through feeding or intravenous supplementation have not been described in detail. Study of the pharmacokinetics of inositol in extremely premature newborns with limited blood volume is best carried out using unused plasma samples scavenged from the clinical laboratory after analysis of clinically indicated studies. Such studies require that the stability of inositol in plasma in the conditions used in storage within the laboratory be known. However, to date, there are no published studies evaluating the stability of inositol in these conditions.

## Objective

The objective of this study was to develop an assay for inositol using high pressure liquid chromatography and describe the 14-day stability of inositol in plasma stored at room temperature, under refrigeration at 4°C, and frozen at -80°C, as well as the effects of hemolysis and various anticoagulants.

## Methods

An analytic technique for myo-inositol was developed and validated using high-pressure liquid chromatography (HPLC). Using this analysis, the stability of plasma inositol was measured for up to 14 days in samples stored at room temperature, refrigerated at 4°C, and frozen at -80°C in a range of concentrations expected to occur clinically, 100 to 700 µM. The effects of different anticoagulants and storage with intact and lysed red blood cells were also tested.

## HPLC analysis

The HPLC system consisted of an Hitachi L-6200A pump controlled by Hitachi D-6000 Chromatography Data Station Software, which collected and analyzed the chromatography data. Detection was achieved with a Waters 410 Differential Refractometer. Separation was achieved with two Bio-Rad Aminex HPX-87H (300×7.8mm) columns connected in tandem and maintained at 65°C in a separate column heater. All chemicals were HPLC grade and purchased from Sigma-Aldrich Chemical Company (St. Louis, MO). The mobile phase was 0.02 M H<sub>2</sub>SO<sub>4</sub> at a flow rate of 0.4 ml/min. Retention times under these conditions were 27.4 min for inositol, 31.4 min for xylitol (internal standard) and 26.9 min for glucose the largest, potentially interfering peak (Figure 1). Plasma standards and samples were prepared for HPLC analysis by transferring 100 µL of sample or standard to a 1.5 ml Eppendorf tube, to which was added 500 µL of an aqueous solution of xylitol at 400 µM. This mixture was mixed briefly before adding 100 µL of 0.3 N Ba(OH)<sub>2</sub> followed by 100 µL of 0.3 N Zn(SO)<sub>4</sub>. The tube was capped, vortexed vigorously for 20 seconds and centrifuged @ 8000 g for 8 minutes. The clear supernatant was transferred to an autosampler vial from which 50 µL was

injected into the HPLC system for analysis. The standard curves were developed from inositol concentrations of 0, 200, 400, 600, and 1000  $\mu\text{M}$  prepared in human plasma obtained from the Associated Regional University Pathologists blood bank (Salt Lake City, Utah), divided into 1 mL aliquots and stored frozen at  $-70^{\circ}\text{C}$  for 2 days or less. The linearity was determined by linear regression of inositol concentration on the basis of peak area ratios of inositol to the internal standard.

### Assay accuracy and precision

To determine the accuracy and precision of the assay, samples of human plasma were spiked with inositol in concentrations of 50, 100, 300 and 700  $\mu\text{M}$  and frozen in 1 mL aliquots at  $-80^{\circ}\text{C}$ . Accuracy, defined as the difference from the expected concentration measured by percent error  $[(\text{analyte concentration} - \text{expected concentration})/\text{expected concentration} \times 100]$ , was determined for these 4 concentrations analyzed on 6 different days. Precision, defined as the coefficient of variation (CV, which was calculated by standard deviation/mean  $\times 100$ ) among analyses of the same concentration, was evaluated by repeated analysis of samples from inositol concentrations of 100  $\mu\text{M}$ , 300  $\mu\text{M}$  and 700  $\mu\text{M}$  in 6 batches on a single day. All analyses were carried out with duplicate injections and averaged. New standard curves were determined on each day using a 1 mL aliquot of each standard that was stored frozen at  $-80^{\circ}\text{C}$ .

### Inositol stability

The effects of temperature and time on inositol stability in plasma were tested at room temperature, under refrigeration at  $4^{\circ}\text{C}$  and frozen at  $-80^{\circ}\text{C}$  for 0 to 14 days. Using human plasma (containing heparin 10 units/mL), inositol was added to yield a final concentration of 500  $\mu\text{M}$ . The plasma was divided into three sets of fifteen 500  $\mu\text{L}$  samples. One set was stored at  $-80^{\circ}\text{C}$ , one set was refrigerated at  $4^{\circ}\text{C}$  and another was stored at room temperature approximately  $21^{\circ}\text{C}$ . Five samples were analyzed from the room temperature and refrigerated sets and compared to the concentration from the samples frozen at  $-80^{\circ}\text{C}$  on day 0, day 7 and day 14. New standard curves were prepared in human plasma on each day of the analysis.

### Effects of whole and lysed blood on inositol concentrations

Heparinized (10 U/mL) whole blood samples were prepared by adding inositol to yield a final concentration of 1000  $\mu\text{M}$  in fifteen 500  $\mu\text{L}$  replicates. The first set of 5 replicates was immediately centrifuged, separated, and the plasma was frozen at  $-80^{\circ}\text{C}$ . The second and third sets of 5 samples were allowed to remain at room temperature for 1 hour and 24 hours, respectively. They were then sonicated for 20 minutes to lyse the cells and the plasma was frozen at  $-80^{\circ}\text{C}$ . Samples were analyzed using standards prepared as above in human plasma.

### Effects of anticoagulants

Blood was collected into tubes containing potassium ethylenediaminetetra acetic acid (EDTA), sodium heparin, or lithium heparin after which it was centrifuged and the plasma removed and prepared for analysis. The chromatograms from samples prepared from each

type of anticoagulant were compared to that from xylitol and inositol to detect whether there were interfering peaks or similar retention times.

## Results

### HPLC analysis

The Figure shows a typical chromatogram with the large glucose peak eluting immediately prior to inositol. Although the chromatogram did not always reach baseline between the glucose and inositol peaks, the standard curves were always linear using the ratios of peak area of inositol/xylitol. The mean correlation coefficient for the inositol standard curves was  $0.997 \pm 0.002$  ( $n=12$ ). For inositol concentrations of 50, 100, 300, and 700  $\mu\text{M}$ , the interday precision (coefficient of variation) on 6 different days was 12.65% for 50  $\mu\text{M}$ , 6.95% for 100  $\mu\text{M}$ , 2.67% for 300  $\mu\text{M}$ , and 1.90% for 700  $\mu\text{M}$  (Table 1). Accuracy (% error) from analyses on 6 days averaged  $16.28 \pm 14.78\%$  for 50  $\mu\text{M}$ ,  $90.26 \pm 6.97\%$  for 100  $\mu\text{M}$ ,  $-1.59 \pm 2.63\%$  for 300  $\mu\text{M}$ , and  $-0.72 \pm 1.54\%$  for 700  $\mu\text{M}$ . The intraday variation in analyses was determined from 6 analyses of inositol concentrations of 100, 300 and 700  $\mu\text{M}$  determined on the same day. These showed an intraday precision (coefficient of variation) of 0.72% for 100  $\mu\text{M}$ , 0.14% for 300  $\mu\text{M}$ , and 1.58% for 700  $\mu\text{M}$  (Table 2). Accuracy (% error) averaged  $-10.7\% \pm 0.6\%$  for 100  $\mu\text{M}$ ,  $-6.50 \pm 0.1\%$  for 300  $\mu\text{M}$ , and  $-4.10 \pm 1.50\%$  for 700  $\mu\text{M}$ .

Stability testing demonstrated that a storage temperature of 4°C and 21°C had no effect on the concentration for as long as 14 days. At room temperature, 5 analyses of 500  $\mu\text{M}$  concentrations yielded a CV 3.3% on day 0 ( $507.3 \pm 7.4 \mu\text{M}$ ); CV 1.5% on day 7 ( $499.9 \pm 8.0 \mu\text{M}$ ); CV 1.6% on day 14 ( $499.9 \pm 1.6 \mu\text{M}$ ). Similarly, with refrigeration to 4°C, 5 analyses of 500  $\mu\text{M}$  concentrations yielded a CV 2.0% on day 0 ( $502.6 \pm 9.8 \mu\text{M}$ ); CV 3.4% on day 7 ( $508.8 \pm 17.2 \mu\text{M}$ ); and CV 5.6% on day 14 ( $492.8 \pm 27.6 \mu\text{M}$ ). Storage of inositol in whole blood for up to 24 hours did not alter the plasma concentration. Five inositol samples of 1000  $\mu\text{M}$  analyzed at three time points resulted in a CV 4.8% at time 0 ( $1088.8 \pm 51.9 \mu\text{M}$ ); CV 3.4% at 1 hour ( $1062.9 \pm 36.1 \mu\text{M}$ ); and CV 6.0% at 24 hours ( $1034.4 \pm 61.6 \mu\text{M}$ ). Storage of inositol in lysed red blood cells also did not alter the concentration. In 5 samples of inositol 1000  $\mu\text{M}$ , the CV was 2.5% at time 0 ( $1122.2 \pm 28.6 \mu\text{M}$ ); CV 7.8% at 1 hour ( $1091.6 \pm 84.8 \mu\text{M}$ ); and CV 11.5% at 24 hours ( $1032.1 \pm 119.2 \mu\text{M}$ ).

None of the anticoagulants, including EDTA, sodium heparin and lithium heparin interfered with the peaks for inositol or xylitol (data not shown).

## Discussion

Excess plasma stored in the hospital chemistry laboratory after completion of clinically indicated tests is designated a scavenged sample. The date and time of sample collection is labeled on the remaining plasma. With the limited total blood volume in extremely low birth weight newborns of 36 to 45 ml, the use of scavenged samples is particularly attractive. It also obviates additional trauma from blood sampling by heel stick or venipuncture in these patients who already undergo a large number of painful procedures.<sup>10</sup> Although the use of scavenged blood samples is particularly applicable to studies in newborns, it has not been widely used. Wade et al. [11] used scavenged plasma samples to provide 39% of the

concentration time points in a study of the population pharmacokinetics of fluconazole in preterm newborns. They demonstrated that the samples were stable for at least 72 hours in the storage conditions present in the clinical laboratory [12].

Not all drugs remain stable in plasma. The esterases in plasma are known to breakdown some drugs that are administered as prodrug esters, such as beclomethasone dipropionate [13] and bendamustine [14]. Other drugs, such as ampicillin are known to be unstable at room temperature as well as during refrigeration [15].

Treatment of preterm newborns with inositol is underway to try to reduce chronic lung disease and retinopathy of prematurity based on recent pharmacokinetic studies [16]. Another study is planned to determine the variations and changes in inositol concentrations at birth and during the first days to weeks in extremely premature newborns using scavenged samples from the clinical laboratory. Breast milk contains inositol and some infant formulas are supplemented with inositol, as well. The influence of the amount and composition of feeding on plasma inositol concentrations will help determine the biologic variability of inositol in this population that is at risk for chronic lung disease and whether there is any correlation between these clinical problems and their inositol concentrations at birth.

The current study demonstrates that inositol can be accurately and precisely analyzed by HPLC in concentrations from 50 to 700  $\mu\text{M}$  even though high blood concentrations of glucose prevent complete return of the chromatographic curve to baseline. At 50  $\mu\text{M}$ , precision and accuracy are reduced but still acceptable for analysis of the changes in inositol after birth. For concentrations less than 50  $\mu\text{M}$ , inositol must be analyzed with other techniques, such as LC/MS/MS for accurate determination.

Scavenged samples stored in the clinical laboratory either in the refrigerator or at room temperature for up to 14 days retain inositol without degradation. Similarly, storage with red blood cells for 24 hrs without separation does not alter the concentration. When inositol was stored in lysed red blood cells, the concentration increased 11.5% at 24 hours which may fall outside the acceptable range of variation for some studies. None of the anticoagulants demonstrated peaks in the vicinity of those for xylitol or inositol.

## Conclusion

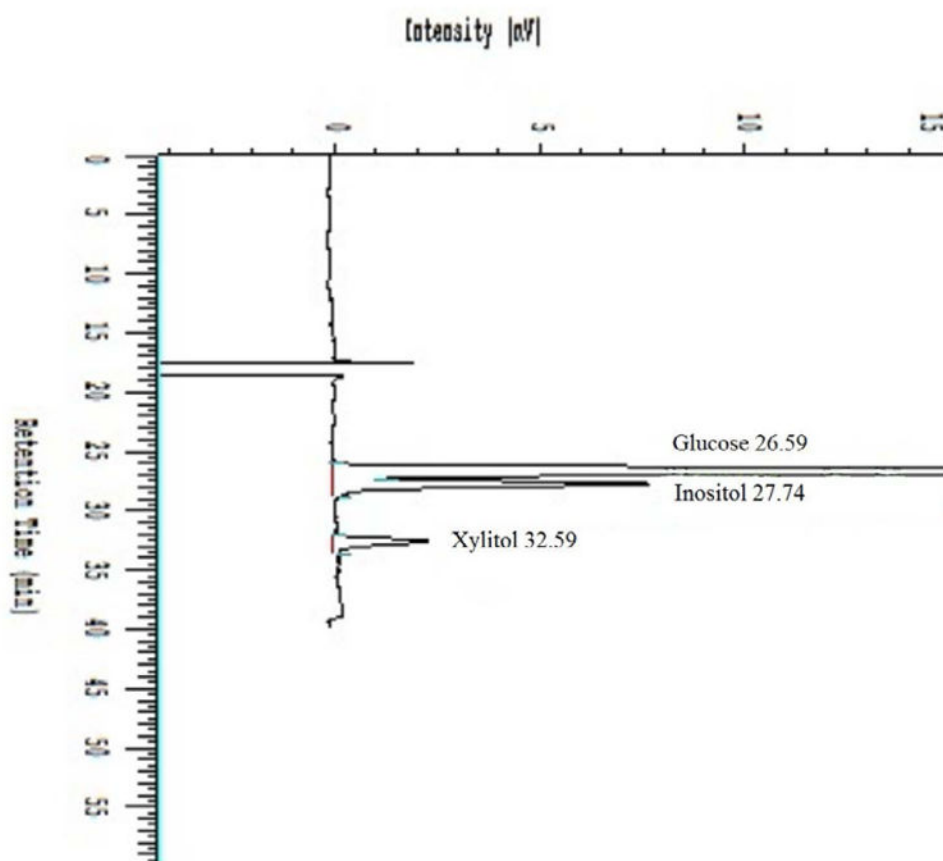
This analytic technique for inositol by HPLC can be used for analysis of human plasma samples retrieved from storage in the clinical laboratory up to 14 days after removal from the patient. Storage in red blood cells that are not lysed does not change the concentration, but storage in lysed red blood cells increases the concentration by 11.5% at 24 hours.

## Acknowledgments

Supported in part by NICHD Pediatric Pharmacology Research Unit grant: 1 U10 HD045986.

## References

1. Hallman M, Arjomaa P, Hoppu K. Inositol supplementation in respiratory distress syndrome: relationship between serum concentration, renal excretion, and lung effluent phospholipids. *J Pediatr*. 1987; 110:604–610. [PubMed: 3559811]
2. Hallman M, Bry K, Hoppu K, Lappi M, Pohjavuori M, et al. Inositol supplementation in premature infants with respiratory distress syndrome. *N Engl J Med*. 1992; 326:1233–1239. [PubMed: 1560798]
3. Allman M, Jarvenpaa AL, Pohjavuori M. Respiratory distress syndrome and inositol supplementation in preterm infants. *Arch Dis Child*. 1986; 61:1076–1083. [PubMed: 3539028]
4. Brown LD, Cheung A, Harwood JE, Battaglia FC. Inositol and mannose utilization rates in term and late-preterm infants exceed nutritional intakes. *J Nutr*. 2009; 139:1648–1652. [PubMed: 19494026]
5. Troyer DA, Schwertz DW, Kreisberg JI, Venkatachalam MA. Inositol phospholipid metabolism in the kidney. *Annu Rev Physiol*. 1986; 48:51–71. [PubMed: 3010824]
6. Holub BJ. Metabolism and function of myo-inositol and inositol phospholipids. *Annu Rev Nutr*. 1986; 6:563–97. [PubMed: 2425833]
7. Downes CP, Macphee CH. myo-inositol metabolites as cellular signals. *Eur J Biochem*. 1990; 193:1–18. [PubMed: 2171926]
8. Brusati V, Jozwik M, Jozwik M, Teng C, Paolini C, et al. Fetal and maternal non-glucose carbohydrates and polyols concentrations in normal human pregnancies at term. *Pediatr Res*. 2005; 58:700–704. [PubMed: 16189196]
9. Carver JD, Stromquist CI, Benford VJ, Minervini G, Benford SA, et al. Postnatal inositol levels in preterm infants. *J Perinatol*. 1997; 17:389–92. [PubMed: 9373845]
10. Simons SH, van Dijk M, Anand KS, Roofthoof D, van Lingen RA, et al. Do we still hurt newborn babies? A prospective study of procedural pain and analgesia in neonates. *Arch Pediatr Adolesc Med*. 2003; 157:1058–64. [PubMed: 14609893]
11. Wade KC, Wu D, Kaufman DA, Ward RM, Benjamin DK, et al. Population pharmacokinetics of fuconazole in young infants. *Antimicrob Agents Chemother*. 2008; 52:4043–4049. [PubMed: 18809946]
12. Wu D, Wade KC, Paul DJ, Barrett JS. A rapid and sensitive LC-MS/MS method for determination of fuconazole in human plasma and its application in infants with *Candida* infections. *Ther Drug Monit*. 2009; 31:703–709. [PubMed: 19745791]
13. Foe K, Brown KF, Seale JP. Decomposition of beclomethasone propionate esters in human plasma. *Biopharm Drug Dispos*. 1998; 19:1–8. [PubMed: 9510979]
14. Huber S, Antoni F, Schickaneder C, Schickaneder H, Bernhardt G, et al. Stabilities of neutral and basic esters of bendamustine in plasma compared to the parent compound: Kinetic investigations by HPLC. *J Pharm Biomed Anal*. 2015; 104:137–43. [PubMed: 25499654]
15. do Nascimento TG, de Jesus Oliveira E, Basilio Junior ID, de Araujo-Junior JX, Macedo RO. Short-term stability studies of ampicillin and cephalixin in aqueous solution and human plasma: Application of least squares method in Arrhenius equation. *J Pharm Biomed Anal*. 2013; 73:59–64. [PubMed: 22559990]
16. Phelps DL, Ward RM, Williams RL, Watterberg KL, Laptook AR, et al. Pharmacokinetics and safety of a single intravenous dose of myo-inositol in preterm infants of 23-29 wk. *Pediatr Res*. 2013; 74:721–729. [PubMed: 24067395]



**Figure 1.** Typical chromatogram using the conditions described in the manuscript, showing inositol eluting at 27.74 minutes, xylitol eluting at 32.59 minutes and glucose eluting at 26.59 minutes.

Interday Precision (Coefficient of Variation (CV, standard deviation/mean  $\times$  100)) and Accuracy (Percentage Error (%error) = (measured concentration – expected concentration)/expected concentration  $\times$  100)) for Inositol Analyses in Concentrations of 50 to 700  $\mu$ M, analyzed on 6 different days, in columns.

**Table 1**

Expected Concentration	Day:	Measured Concentrations of Inositol ( $\mu$ M)						Mean	SD*	CV*
		1	2	3	4	5	6			
700 $\mu$ M		670.8	673.4	671.5	673.2	678.1	707.5	679.1	12.91	1.90
	% error:	-4.17	-0.04	-0.04	-0.04	-0.03	0.01	-0.72	1.54	
300 $\mu$ M		295.5	291.0	287.3	296.9	289.5	311.2	295.2	7.89	2.67
	% error:	-1.5	-3.0	-4.2	-1.0	-3.5	3.7	-1.59	2.63	
100 $\mu$ M		97.7	90.1	93.1	106.8	107.0	106.7	100.3	6.97	6.95
	% error:	-2.3	-9.9	-6.9	6.8	7.0	6.7	0.26	6.97	
50 $\mu$ M		42.6	64.3	62.6	59.5	63.3	58.2	58.4	7.39	12.65
	% error:	-14.8	28.7	25.3	19.0	26.5	16.3	16.84	14.78	

\* SD = standard deviation, CV = Coefficient of Variation



Intraday Precision (Coefficient of Variation (CV) = standard deviation/mean  $\times$  100) and Accuracy (Percentage Error (%error) = (measured concentration – expected concentration)/expected concentration  $\times$  100) for 6 analyses of inositol on the same day in concentrations of 100 to 700  $\mu$ M.

**Table 2**

Expected Concentration	Analysis No.:	Measured Concentrations of Inositol ( $\mu$ M)						Mean	SD*	CV*
		1	2	3	4	5	6			
700 $\mu$ M		673.6	669.6	667.1	659	667.8	690.7	671.3	10.6	1.58%
	%error:	-3.77	-4.34	-4.7	-5.85	-4.6	-1.33	-4.1	1.5	
300 $\mu$ M		280.2	280.8	271.1	283.9	289.7	290.5	280.5	0.4	0.14%
	%error:	-6.59	-6.4	-9.65	-5.36	-3.44	-3.16	-6.5	0.1	
100 $\mu$ M		89.8	88.9	85.8	88	87.9	93.2	89.3	0.6	0.72%
	%error:	-10.21	-11.12	-14.24	-11.98	-12.13	-6.8	-10.7	0.6	

\* SD = standard deviation, CV = Coefficient of Variation