


# Pharmacokinetic Study of Frovatriptan Succinate Tablet After Single and Multiple Oral Doses in Chinese Healthy Subjects

Hongquan Zheng<sup>1,2</sup>

Yan Xia<sup>3</sup>

Shengjun Qu <sup>4</sup>

Lin Fan<sup>2</sup>

Jingjing Zhang<sup>1</sup>

Zhixiang Ma<sup>1</sup>

Yangsheng Chen<sup>4</sup>

Hongwei Fan<sup>1,2</sup>

<sup>1</sup>Department of Clinical Pharmacology Lab, Nanjing First Hospital, Nanjing Medical University, Nanjing, Jiangsu, People's Republic of China; <sup>2</sup>School of Basic Medicine and Clinical Pharmacy, China Pharmaceutical University, Nanjing, Jiangsu, People's Republic of China; <sup>3</sup>Jiangsu Leeway Biological Technology Co., Ltd, Nanjing, Jiangsu, People's Republic of China; <sup>4</sup>CP Pharmaceutical Qingdao Co., Ltd, Qingdao, Shandong, People's Republic of China

Correspondence: Hongwei Fan  
Nanjing First Hospital, Nanjing Medical University, 68 Changle Road, Nanjing, 210006, People's Republic of China  
Tel +86 25 5288 7030  
Fax +86 25 5288 7031  
Email fanhongwei178@sina.com

Yangsheng Chen  
3601 Tuanjie Road, Economic and Technological Development Zone, Qingdao, People's Republic of China  
Tel +86 18766396996  
Email chenys@cqqd.com

**Purpose:** The present report describes findings from a Phase I clinical study that evaluated the single- and multiple-dose pharmacokinetics of frovatriptan succinate tablet in Chinese healthy subjects.

**Methods:** A total of 24 healthy subjects were enrolled. In single-dose study, 2.5, 5, and 10 mg oral doses of frovatriptan succinate tablet were administered. A 2.5 mg frovatriptan succinate tablet was administered 12 times in 7 days in the multiple-dose study. Blood samples were collected at scheduled time points.

**Results:** The results in single-dose study indicated that the blood levels were proportional to the administered dose, with the mean  $C_{max}$  and  $AUC_{last}$  ranging from approximately 6.27 ng/mL–17.35 ng/mL and 92.52 h·ng/mL – 287.40 h·ng/mL over the dose range. In the multiple-dose study, moderate drug accumulation was noted, which was attributable to frovatriptan's long  $t_{1/2}$  of about 26.47 to 30.63 h. Gender differences were noticed in both single- and multiple-dose study; exposure PK parameters were consistently higher in female than in male.

**Conclusion:** These pharmacokinetic evaluations in healthy Chinese subjects found that frovatriptan succinate tablet has an acceptable pharmacokinetic profile in Chinese subjects.

**Keywords:** frovatriptan succinate, pharmacokinetics, single-dose, multiple-dose

## Introduction

Triptans are a class of selective serotonin 5-hydroxytryptamine (5-HT) 1B/1D agonists that is recommended as a first-line treatment for moderate to severe migraine.<sup>1,2</sup> Despite the similar molecular structures, individual triptans differ in pharmacokinetic and pharmacodynamic properties and can be categorized into 2 main groups. Some triptans, such as sumatriptan, have a faster onset of action, belong to group 1. On contrast, other triptans, such as frovatriptan, have a slower onset of action and belong to group 2.<sup>3</sup>

Frovatriptan was developed to provide a long duration of action and reduced potential for side effects and drug interactions.<sup>4</sup> It is reported that frovatriptan results in good efficacy 2 and 4 hours after administration comparing to rizatriptan and lower relapse rate as compared with rizatriptan, zolmitriptan, and almotriptan.<sup>5</sup> Frovatriptan is also supported to be used for the acute and short-term prophylaxis of menstrual migraine.<sup>6,7</sup> In clinical practice, the recommended dose of frovatriptan is 2.5 mg per time.<sup>8</sup> The pharmacokinetic profile of multiple oral doses of frovatriptan in healthy subjects is characterized by long  $t_{1/2}$  (about 26 h), with a  $T_{max}$  of 2 to 4

hours. Steady state is reached in about 4 to 5 days with linear pharmacokinetics over a dose range of 1 to 40 mg. The CYP1A2 isoenzyme of cytochrome P-450 is the primary metabolic pathway for frovatriptan. Frovatriptan reversibly distributes into blood cells, especially erythrocytes, with the binding rate of about 60%.<sup>9</sup>

The present report is based on findings from a Phase I clinical study that was conducted in Chinese healthy male and female subjects, which add to our understanding of the clinical pharmacokinetics (PK) after single- and multiple-dose administration of frovatriptan succinate tablet treatment.

## Methods

### Study Information

The study was performed at Phase I Clinical Research Center of Nanjing First Hospital, Nanjing, China, approved by the Ethics and Research Committee of Nanjing First Hospital (Ethic Approval Number YW20180921-03) and the Clinical trial registration number is CTR20190462. All research processes were in line with the requirements of International Conference on Harmonization (ICH) and Good Clinical Practice (GCP), the existing Declaration of Helsinki regarding medical research in humans and relevant laws and regulations of National Medical Products Administration. All participants were informed of the study's aim, procedures and potential risks and voluntarily signed the informed consent forms prior to the initiation of the study.

### Subjects

All 24 healthy subjects were included in the study with 12 in the single-dose format study and 12 in the multiple-dose format study. Eligible subjects in the study included healthy Chinese men and women aged from 18 to 45 years, having a body mass index (BMI) varied from 19 to 26 kg/m<sup>2</sup> (including the boundary value). The weight of male subjects should not be less than 50 kg, whereas female subjects should weigh no less than 45 kg. All of the subjects involved in the studies underwent a strict screening process, including the collection of demographic data (birth date, gender, nation), the measure of height and weight, a detailed review of their medical and surgical histories and complete medical examinations, such as physical examinations, 12-lead electrocardiogram (ECG), chest X-ray and clinical laboratory tests. None of the subjects were smokers or alcoholics. Anyone who had

a history of drug abuse was excluded. Women with child-bearing potential were required to take a pregnancy test at screening.

### Study Design

The single-dose format study was conducted according to a randomized, open-label, three-period, and three cross-over design. Twelve healthy subjects (six men and six women) were randomly divided into three groups (two men and two women per group). Subjects of each group received each of the following 3 treatment procedures in a randomized sequence: 2.5-5.0-10.0 mg, 5.0-10.0-2.5 mg and 10.0-2.5-5.0 mg, according to a computer-generated randomization schedule (SAS 9.4). There was a 10-day washout time between each period. Prior to drug administration, all subjects were required to keep fasting (only water was allowed) for at least 10 hours and blank blood samples were collected within 60 minutes before dosing. Water was permitted 1 h before and 1 h after administration and standard meals were served until 4 hours after administration.

In the multiple-dose format study, twelve subjects were arranged to take 2.5 mg frovatriptan succinate tablet on day 1 morning and 2.5 mg every 12 h from day 2 morning to day 7 morning for 11 times. On day 1 and day 7, keeping subjects fasted overnight for at least 10 hours prior to administration. No subjects were allowed to drink water 1 hour before and after administration, and standard meals were not given until 4 hours after administration. On day 2 to 6, drinking water is prohibited for 30 minutes before and after administration, and breakfast was provided 30 minutes after administration.

Frovatriptan succinate tablet (2.5 mg per tablet, batch No.170923) was supplied by CP Pharmaceutical Qingdao Co. Ltd. Subjects were required to take the tablets with 240mL warm water and stay in upright position of the upper body and avoid strenuous exercise 4 hours after administration each time.

### Blood Sample Collection

Blood samples (2 mL each time) in the single-dose study were collected from upper extremity vein into the pre-cooled anticoagulant vacutainers containing K<sub>2</sub>-EDTA (K<sub>2</sub>-ethylenediaminetetraacetic acid) at the time points as follows: 0, 0.5, 1.0, 1.5, 2.0, 2.5, 3.0, 3.5, 4.0, 5.0, 6.0, 8.0, 12.0, 24.0, 36.0, 48.0, 72.0 and 96.0 h.

In the multiple-dose study, pharmacokinetic sampling was implemented at 0, 0.5, 1.0, 1.5, 2.0, 2.5, 3.0, 3.5, 4.0,

5.0, 6.0, 8.0, 12.0 and 24.0 h on day 1. On day 4, 5, and 6 morning, 2 mL venous blood before drug administration was drawn to observe the minimum value of trough plasma drug concentration. Additional plasma samples were obtained at 0, 0.5, 1.0, 1.5, 2.0, 2.5, 3.0, 3.5, 4.0, 5.0, 6.0, 8.0, 12.0, 24.0, 36.0, 48.0, 72.0 and 96.0 h on day 7. Other conditions were the same as the single-dose study.

The well-mixed blood samples placed in an ice bath were separated into sample and backup tubes (no less than 0.8 mL respectively) within 1 h. Within 1 h after collected, the separated samples were stored at  $-20^{\circ}\text{C}$  temporarily and transferred to  $-70^{\circ}\text{C}$  within 12 h, or stored at  $-70^{\circ}\text{C}$  directly.

## Determination of Drug Concentration

Frovatriptan concentrations in whole blood were determined by validated liquid chromatography-tandem mass spectrometry (LC-MS/MS). The LC-MS/MS system consists of a Nexera UHPLC LC-30A liquid chromatograph (SHIMADZU CORPORATION, Japan) and Triple Quad 5500 mass spectrometer (AB SCIEX, America) with an electrospray ionization source. For pretreatment, a volume of 100  $\mu\text{L}$  blood sample was precipitated by 450  $\mu\text{L}$  precipitant with internal standard (frovatriptan-*d3* methanol solution: acetonitrile=1:1). An ACE-C8 column (50 $\times$ 2.1 mm, 3  $\mu\text{m}$ ) was used for chromatographic separation. The mobile phase for elution was a mixture of water with 0.1% formic acid as mobile phase A and methanol and acetonitrile (1:1) as mobile phase B. The gradient elution was as follows: 0–0.6 min, 4% B; 0.6–1.2 min, increase B to 95%, 1.2–1.8 min, 95% B, 1.8–1.85 min, reduce B to 4%, 1.85–2.5 min, 4% B. The elution was achieved at a flow rate of 0.55 mL/min with the column temperature of room temperature. The analyte was detected in positive mode and the optimized detecting conditions were summarized as follows: heater temperature  $500^{\circ}\text{C}$ ; electrospray voltage 5500 V; curtain gas 20 Arb; collision gas 9 Arb; entrance potential 10 V; collision cell exit potential 10 V; ion source gas 1 70 Arb, ion source gas 2 80 Arb; collision energy 61 eV. The transitions  $m/z$  244.14 $\rightarrow$ 213.1 for frovatriptan and  $m/z$  247.13 $\rightarrow$ 168.09 for frovatriptan-*d3* were monitored using multiple reaction monitoring mode.

The method is linear between the range of 0.0800 to 32.0 ng/mL. The inter-assay precision of quality control samples analyzed throughout the study was between 3.00% and 5.74%. Inter-assay accuracy varied between 95.9% and 109.19%.

## Pharmacokinetic Analyses

Relevant pharmacokinetic parameters were analyzed based on a noncompartmental model using Phoenix WinNonlin 7.0 (Pharsight Corp, Mountain View, CA, USA). Analyte concentrations below the limit of quantification (BLQ) were set to zero. Values for  $C_{\text{max}}$  of frovatriptan and  $T_{\text{max}}$  were from the observed data by concentration-time curve.  $\lambda_z$ , the terminal-phase elimination rate constant, was equal to the slope calculated by a log-linear regression of the terminal-phase of the concentration-time curve. The half-life ( $t_{1/2}$ ) was calculated as  $(\ln 2)/\lambda_z$ . For single- and multiple-dose pharmacokinetics, the AUC from time 0 to the time of the last quantifiable concentration ( $\text{AUC}_{\text{last}}$ ) or during 12 h ( $\text{AUC}_{12}$ ) was calculated by using the linear trapezoid method and AUC from time zero extrapolated to infinite time ( $\text{AUC}_{\text{inf}}$ ) was calculated as  $\text{AUC}_{\text{last}} + C_t/\lambda_z$  ( $C_t$ , the last measurable concentration). AUC from time 0 to time tau (the dosing interval) at steady state ( $\text{AUC}_{\text{tau,ss}}$ ) was calculated, where tau = 12 hours. Apparent oral clearance  $\text{CL}_z/F$  was calculated according to  $\text{dose}/\text{AUC}_{\text{inf}}$  for single dose and  $\text{dose}/\text{AUC}_{\text{tau,ss}}$  for multiple doses. The terminal-phase apparent volume of distribution after oral administration ( $V_z/F$ ) was calculated by dividing clearance by  $\lambda_z$ . The accumulation index  $R_{\text{AUC}}$  and  $R_{C_{\text{max}}}$  were calculated as  $\text{day 7 } \text{AUC}_{\text{tau,ss}}/\text{day 1 } \text{AUC}_{12}$  and  $\text{day 7 } C_{\text{max,ss}}/\text{day 1 } C_{\text{max}}$ , respectively.

## Statistical Analysis

SPSS version 26.0 was used for all statistical analysis and findings were considered statistically significant if  $p < 0.05$ . All experiments were expressed as mean  $\pm$  SD (standard deviation). Nonparametric tests were used for  $T_{\text{max}}$  in single- and multiple-dose study. Analysis of variance (ANOVA) was used for other parameters in single-dose study. Comparisons between gender and between the multiple-dose and single-dose data of 2.5 mg were performed using the Student's *t*-test. All statistical tests used a 5% level of significance to determine significance. All P values cited were 2-tailed.

## Safety Assessments

Safety was assessed in the whole clinical trial, including adverse event reports, results of physical examinations, vital signs, clinical laboratory evaluations, and ECGs.

## Results

### Demographics

Table 1 summarizes the baseline characteristics of subjects in the study.

**Table 1** Baseline Characteristics of Subjects Receiving Frovatriptan in the Study

Characteristic	Single-Dose (N=12)	Multiple-Dose (N=12)
	Female (N=6)/ Male (N=6)	Female (N=6)/ Male (N=6)
Age, years	24.7 ± 5.12 25.7 ± 5.12/23.7 ± 4.46	27.2 ± 5.46 26.7 ± 5.71/27.67 ± 4.64
Height, cm	168.92 ± 12.34 158.08 ± 3.52/179.75 ± 5.65	168.42 ± 9.72 162.67 ± 8.06/174.17 ± 6.48
Weight, kg	64.03 ± 11.74 54.17 ± 3.52/73.90 ± 6.76	62.97 ± 9.07 59.23 ± 5.35/64.90 ± 9.71
BMI, kg/m <sup>2</sup>	22.27 ± 1.86 21.7 ± 1.67/22.85 ± 1.70	22.13 ± 1.97 23.02 ± 1.78/21.25 ± 1.54

Notes: All Values are Mean ± SD, Unless Indicated Otherwise.

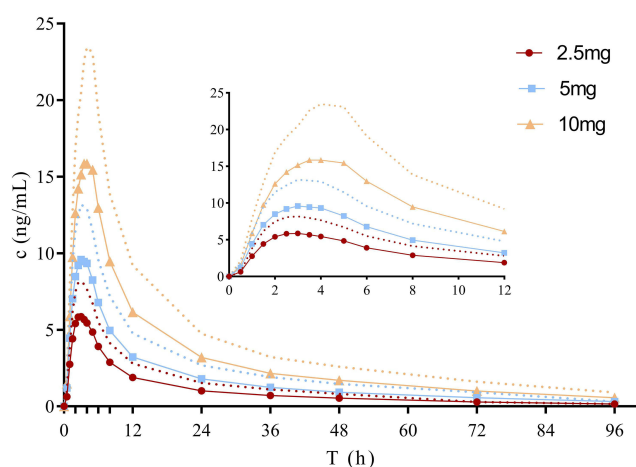
Abbreviation: BMI, body mass index.

## Pharmacokinetics

### Single-Dose Study

The whole blood concentration – time curves after single oral doses of 2.5, 5 and 10 mg frovatriptan succinate tablet are illustrated in Figure 1. Pharmacokinetic parameters are presented in Table 2. Frovatriptan levels increased proportionally with increasing dose of frovatriptan succinate tablet. A regression of frovatriptan revealed a linear relationship with  $C_{max}$  ( $r^2 = 0.9999$ ),  $AUC_{last}$  ( $r^2 = 0.9996$ ) and  $AUC_{inf}$  ( $r^2 = 0.9994$ ) proportional to dose between oral dose 2.5 mg to 10 mg.

PK parameters of frovatriptan succinate in whole blood by gender are summarized in Table 3. The  $T_{max}$  was slightly longer in women (3.25–4.5 h) than in men (2.75–3.0 h).



**Figure 1** Mean (SD) blood concentration-time curve of frovatriptan after single-dose oral administration. (n = 12 per dose).

Notes: The solid line shows the mean blood concentration-time curve of frovatriptan. The dotted curve denote the standard deviations (SD). Inset show the 0–12h interval blood concentration-time curve of frovatriptan after single-dose oral administration.

Systemic exposure was higher in female subjects compared with male subjects.  $AUC_{last}$  and  $AUC_{inf}$  were approximately 2-fold higher in female than male under doses 2.5 mg and 5 mg.  $C_{max}$  under dose 2.5 mg were significantly ( $p < 0.01$ ) higher in female compared with male, whereas  $V_z/F$  and  $CL_z/F$  under dose 2.5 mg and  $CL_z/F$  under dose 10 mg were significantly ( $p < 0.05$ ) lower in female compared with male.

### Multiple-Dose

One of the twelve subjects (random No. 019) refused to take administration on day 2 evening and withdrew from the study. Therefore, except the pharmacokinetic parameters of the 12 subjects after the first dose, the pharmacokinetic parameters of the stable states and the last dose were collected from only 11 subjects.

The whole blood concentration – time curves after multiple oral dose of 2.5 mg frovatriptan succinate tablet are illustrated in Figure 2 and PK parameters are presented in Table 4. Steady state (based on trough blood concentrations) was achieved by day 4. Twice-daily dosing produced approximately 2-fold higher mean values for  $C_{max}$  ( $p < 0.01$ ) on day 7 than on day 1.

Systemic exposure was higher in female subjects than in male subjects (Figure 2 and Table 5).  $AUC_{last}$ ,  $AUC_{tau,ss}$  and  $AUC_{inf}$  were more than 2-fold higher in female than male.  $C_{max}$  was significantly ( $p < 0.01$ ) higher in female compared with male, whereas  $V_z/F$  and  $CL_z/F$  were lower in female compared with male.

## Safety Assessment

In total, there were 44 adverse events (AE) in 11 subjects (91.7%) during single-dose format study and 11 AE in 5 subjects (41.7%) during multiple-dose format study. All

**Table 2** Pharmacokinetic Parameters (Mean  $\pm$  SD) of Frovatriptan in Whole Blood After Single-Dose Oral Administration

Parameter	2.5 mg (n = 12)	5 mg (n = 12)	10 mg (n = 12)
C <sub>max</sub> , ng/mL	6.27 $\pm$ 1.96	10.06 $\pm$ 3.77	17.35 $\pm$ 7.10
AUC <sub>last</sub> , h ng/mL	92.52 $\pm$ 42.84	160.82 $\pm$ 73.28	287.40 $\pm$ 127.63
AUC <sub>inf</sub> , h ng/mL	99.70 $\pm$ 46.21	175.31 $\pm$ 83.16	312.12 $\pm$ 142.02
T <sub>max</sub> , h	3.00 (1.50, 5.00)	3.25 (2.00, 5.00)	3.25 (2.50, 6.00)
t <sub>1/2</sub> , h	26.47 $\pm$ 5.03	29.53 $\pm$ 3.97	29.22 $\pm$ 3.33
V <sub>z</sub> /F, L	1220.63 $\pm$ 691.66	1546.73 $\pm$ 900.37	1668.65 $\pm$ 905.29
CL <sub>z</sub> /F, L/h	34.30 $\pm$ 25.38	38.28 $\pm$ 27.35	40.22 $\pm$ 22.50

Notes: T<sub>max</sub> is represented as median (min, max).

**Table 3** Pharmacokinetic Parameters of Frovatriptan in Whole Blood by Gender After Ascending Single-Dose Oral Administration

Parameter		2.5 mg		5 mg		10 mg	
		Male	Female	Male	Female	Male	Female
		(n = 6)	(n = 6)	(n = 6)	(n = 6)	(n = 6)	(n = 6)
C <sub>max</sub> , ng/mL	Mean	4.88	7.66**	8.04	12.08	16.56	18.13
	SD	1.67	1.01	4.23	1.89	10.32	1.73
AUC <sub>last</sub> , h ng/mL	Mean	59.17	125.87***	116.02	205.62*	232.85	341.95
	SD	31.16	19.93	67.40	49.55	164.62	39.97
AUC <sub>inf</sub> , h ng/mL	Mean	63.70	135.71***	124.49	226.14*	249.26	374.98
	SD	31.94	23.79	73.08	60.63	178.07	56.39
T <sub>max</sub> , h	Median	2.75	3.25	3.00	3.75	3.00	4.50
	Min, Max	1.50, 3.50	2.50, 5.00	2.00, 4.00	2.50, 5.00	2.50, 4.00	3.00, 6.00
t <sub>1/2</sub> , h	Mean	24.59	28.34	28.08	30.98	28.80	29.64
	SD	6.36	2.59	3.46	4.20	2.21	4.36
V <sub>z</sub> /F, L	Mean	1670.04	771.23*	2068.34	1025.12	2193.43	1143.87
	SD	738.46	149.78	1040.97	216.53	1064.18	97.96
CL <sub>z</sub> /F, L/h	Mean	49.64	18.95*	53.29	23.27	53.28	27.16*
	SD	28.96	3.67	32.82	5.31	26.25	3.95

Notes: \*P < 0.05, \*\*P < 0.01, \*\*\*P < 0.001.

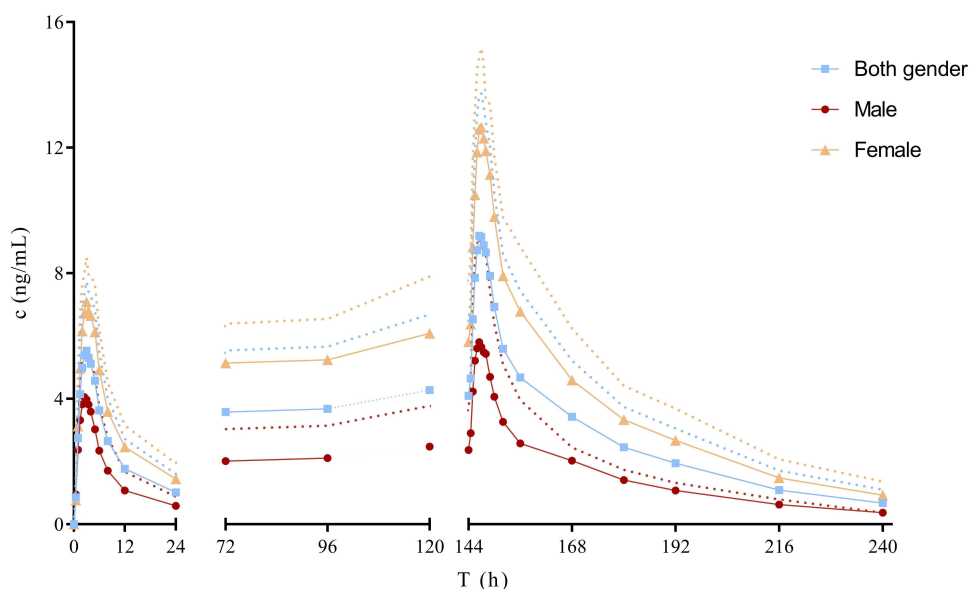
the AE were related to neurological and gastrointestinal systems. During single- and multiple- dose study, dizziness (58.3% and 8.3%, respectively), headache (41.7% and 16.7%, respectively), nausea (25.0% and 8.3%, respectively) were the most frequently reported adverse events. No serious AEs were reported over the course of the studies.

## Discussion

This report describes pharmacokinetic data from a phase I study of frovatriptan succinate tablet in healthy Chinese

subjects. Frovatriptan succinate exhibited linear pharmacokinetics in single doses of 2.5 mg to 10 mg. Mean values for t<sub>1/2</sub> (26.47–29.53 h) and CL<sub>z</sub>/F (34.30–40.22 L/h) were almost constant, regardless of administered dose. Frovatriptan has a high volume of distribution (V<sub>z</sub>/F of approximately 1220–1668 L), which indicates that in addition to being distributed into erythrocytes,<sup>9</sup> frovatriptan may also be concentrated into a wide range of tissues or organs.

Significant accumulation effect was observed over 7 days of administration, which is attributable to the long



**Figure 2** Mean (SD) blood concentration-time curve of frovatriptan after 2.5 mg multiple-dose oral administration. (0~24 h, n = 12; 72~240 h, n = 11).  
**Notes:** The solid line shows the mean blood concentration-time curve of frovatriptan. The dotted curve denote the standard deviations (SD).

terminal half-life. After repeated doses of 2.5 mg frovatriptan succinate, the  $C_{max}$ ,  $AUC_{last}$  and  $AUC_{inf}$  were higher than the corresponding values obtained after 2.5 mg single-dose administration.  $R_{Cmax}$  and  $R_{AUC}$  was 1.79 and 2.25 respectively. Patients who take long-term

medication should pay attention to drug accumulation and receive plasma concentration monitoring if necessary.

Gender differences were noticed in our previous study as well.<sup>9,10</sup> Our work has shown that the exposure PK parameters were higher for female subjects compared

**Table 4** Pharmacokinetic Parameters (Mean  $\pm$  SD) of Frovatriptan in Whole Blood After Single-Dose (2.5 Mg) and Multiple-Dose Oral Administration

Parameters	Single-Dose	Multiple-Dose	
	(n=12)	Day 1 (n = 12)	Day 7 (n = 11)
$C_{max}$ , ng/mL	6.27 $\pm$ 1.96**	5.73 $\pm$ 2.20 <sup>###</sup>	10.25 $\pm$ 3.75
$AUC_{ta,ss}$ , h ng/mL	–	–	86.50 $\pm$ 34.56
$AUC_{12}$ , h ng/mL	–	39.83 $\pm$ 17.30	–
$AUC_{last}$ , h ng/mL	92.52 $\pm$ 42.84***	–	257.03 $\pm$ 124.03
$AUC_{inf}$ , h ng/mL	99.70 $\pm$ 46.21***	–	287.71 $\pm$ 143.30
$T_{max}$ , h	3.00 (1.50 ~ 5.00)	3.00 (2.50 ~ 5.00)	2.50 (2.00 ~ 4.00)
$t_{1/2}$ , h	26.47 $\pm$ 5.03*	–	30.63 $\pm$ 3.74
$V_z/F$ , L	1220.63 $\pm$ 691.66	–	1511.62 $\pm$ 742.49
$CL_z/F$ , L/h	34.30 $\pm$ 25.38	–	33.92 $\pm$ 14.70
$R_{Cmax}$	–	–	1.79 $\pm$ 0.29
$R_{AUC}$	–	–	2.25 $\pm$ 0.56

**Notes:**  $T_{max}$  is represented as median (min, max). \* $P < 0.05$ , \*\* $P < 0.01$ , \*\*\* $P < 0.001$  for single- vs multiple-dose on day 7. <sup>###</sup> $P < 0.01$  for multiple-dose on day 1 vs on day 7.



**Table 5** Pharmacokinetic Parameters (Mean  $\pm$  SD) of Frovatriptan in Whole Blood by Gender After Ascending Multiple-Dose Oral Administration (Day 7)

Parameters	Male (n=5)	Female (n=6)
C <sub>max</sub> , ng/mL	7.03 $\pm$ 2.05	12.93 $\pm$ 2.39**
AUC <sub>last</sub> , h ng/mL	155.62 $\pm$ 35.99	341.54 $\pm$ 104.30**
AUC <sub>inf</sub> , h ng/mL	172.30 $\pm$ 38.73	383.88 $\pm$ 124.32**
AUC <sub>tau,ss</sub> , h ng/mL	57.05 $\pm$ 16.91	111.05 $\pm$ 23.87**
t <sub>1/2</sub> , h	30.86 $\pm$ 3.76	30.43 $\pm$ 4.06
T <sub>max</sub> , h	2.50 (2.00 ~ 3.00)	2.75 (2.00 ~ 4.00)
V <sub>Z</sub> /F, L	2103.62 $\pm$ 724.45	1018.28 $\pm$ 200.46*
CL <sub>Z</sub> /F, L/h	46.60 $\pm$ 11.93	23.36 $\pm$ 4.85**

Notes: T<sub>max</sub> is represented as median (min, max). \*P < 0.05, \*\*P < 0.01.

with male subjects, while the distribution and clearance were higher in male than in female in both single- and multiple-dose studies. Estrogen is a well-known endogenous competitive inhibitor of CYP1A2<sup>11</sup> that metabolizes frovatriptan,<sup>9</sup> which leads to higher CYP1A2 activity in men than in women,<sup>12</sup> and may partly contribute to the gender differences of frovatriptan metabolism. Other possible reasons include the Gender differences of liver and kidney size, and blood flow between male and female.<sup>13</sup>

There is no evidence suggesting that frovatriptan succinate PK profiles differ based on race. However, our study suggests that Chinese subjects may have higher exposure than Caucasian. Buchan<sup>9</sup> and Elkind<sup>10</sup> assessed the pharmacokinetic parameters of 2.5 mg single-dose of frovatriptan by gender. The reported C<sub>max</sub> of male and female in Buchan's study was 4.23 ng/mL and 7.00 ng/mL, respectively, the T<sub>max</sub> was 2.3 h and 3.0 h, respectively, and the AUC<sub>inf</sub> was 42.9 h·ng/mL and 94.0 h·ng/mL, respectively. The reported C<sub>max</sub> of adult male and female in Elkind's study was 4.10 ng/mL and 6.98 ng/mL, respectively, the T<sub>max</sub> was 2 h and 3 h, respectively, and the AUC<sub>inf</sub> of adult female was 96.7 h·ng/mL. Whereas in our study, the AUC<sub>inf</sub> of male and female (63.70 h·ng/mL and 135.71 h·ng/mL, respectively) and T<sub>max</sub> (2.75 h and 3.25 h, respectively) were higher than the two previous studies in Caucasian. One in vitro study<sup>14</sup> suggested that CYP1A2 activity is lower in Chinese than in Caucasians, which could possibly explain the differences between our study and the two previous studies. However, one limitation of our study is that the number

of participants in each gender subgroup was small (n = 6 or 5), further studies are needed to evaluate the impact of ethnicity on frovatriptan succinate.

In conclusion, the results of our studies demonstrate the linear pharmacokinetics of frovatriptan succinate tablet in healthy Chinese volunteers. Based on our observation, frovatriptan succinate has an acceptable pharmacokinetic profile in healthy young volunteers.

## Data Sharing Statement

The individual participant's data that underlying the results reported in this article would be accessed with approval from the corresponding author after 6 months of publication. The study protocol, statistical analysis plan and clinical study report will also be available.

## Funding

This study was sponsored by CP Pharmaceutical Qingdao Co., Ltd., Qingdao, Shandong, China.

## Disclosure

There is no competing interests among the authors.

## References

- Marmura MJ, Silberstein SD, Schwedt TJ. The acute treatment of migraine in adults: the American headache society evidence assessment of migraine pharmacotherapies. *Headache*. 2015;55(1):3–20. doi:10.1111/head.12499
- Worthington I, Pringsheim T, Gawel MJ, et al. Canadian headache society guideline: acute drug therapy for migraine headache. *Can J Neurol Sci*. 2013;40(5 Suppl 3):S1–s80. doi:10.1017/S0317167100118943
- Ong JJY, De Felice M. Migraine treatment: current acute medications and their potential mechanisms of action. *Neurotherapeutics*. 2018;15(2):274–290. doi:10.1007/s13311-017-0592-1
- Sanford M. Frovatriptan: a review of its use in the acute treatment of migraine. *CNS Drugs*. 2012;26(9):791–811. doi:10.2165/11209380-000000000-00000
- Evers S, Savi L, Omboni S, Lisotto C, Zanchin G, Pinessi L. Efficacy of frovatriptan as compared to other triptans in migraine with aura. *J Headache Pain*. 2015;16:514. doi:10.1186/s10194-015-0514-8
- Elkind AH, MacGregor EA. Frovatriptan for the acute treatment of migraine and prevention of predictable menstrual migraine. *Expert Rev Neurother*. 2008;8(5):723–736. doi:10.1586/14737175.8.5.723
- MacGregor EA. A review of frovatriptan for the treatment of menstrual migraine. *Int J Womens Health*. 2014;6(1):523–535. doi:10.2147/ijwh.S63444
- Frova. Drugs-professionals-FDA professional drug information; 2021, Available from: <https://www.drugs.com/pro/frova.html>. Accessed June 24, 2021.
- Buchan P, Keywood C, Wade A, Ward C. Clinical pharmacokinetics of frovatriptan. *Headache*. 2002;42(s2):54–62. doi:10.1046/j.1526-4610.42.s2.3.x
- Elkind AH, Wade A, Ishkanian G. Pharmacokinetics of frovatriptan in adolescent migraineurs. *J Clin Pharmacol*. 2004;44(10):1158–1165. doi:10.1177/0091270004268046

11. Landi MT, Sinha R, Lang NP, Kadlubar FF. Human cytochrome P4501A2. *IARC Sci Publ.* 1999;148:173–195.
12. Ou-Yang DS, Huang SL, Wang W, et al. Phenotypic polymorphism and gender-related differences of CYP1A2 activity in a Chinese population. *Br J Clin Pharmacol.* 2000;49(2):145–151. doi:10.1046/j.1365-2125.2000.00128.x
13. Anderson GD. Gender differences in pharmacological response. *Int Rev Neurobiol.* 2008;83:1–10. doi:10.1016/s0074-7742(08)00001-9
14. Yang J, He MM, Niu W, et al. Metabolic capabilities of cytochrome P450 enzymes in Chinese liver microsomes compared with those in Caucasian liver microsomes. *Br J Clin Pharmacol.* 2012;73(2):268–284. doi:10.1111/j.1365-2125.2011.04076.x

### Drug Design, Development and Therapy

Dovepress

### Publish your work in this journal

Drug Design, Development and Therapy is an international, peer-reviewed open-access journal that spans the spectrum of drug design and development through to clinical applications. Clinical outcomes, patient safety, and programs for the development and effective, safe, and sustained use of medicines are a feature of the journal, which has also

been accepted for indexing on PubMed Central. The manuscript management system is completely online and includes a very quick and fair peer-review system, which is all easy to use. Visit <http://www.dovepress.com/testimonials.php> to read real quotes from published authors.

Submit your manuscript here: <https://www.dovepress.com/drug-design-development-and-therapy-journal>