

# Computational Optimization of Bioanalytical Parameters for the Evaluation of the Toxicity of the Phytomarker 1,4 Naphthoquinone and its Metabolite 1,2,4-trihydroxynaphthalene

Velmani Gopal, Mohammad Harun AL Rashid, Sayani Majumder, Partha Pratim Maiti, Subhash C Mandal\*

Pharmacognosy and Phytotherapy Research Laboratory, Division of Pharmacognosy, Department of Pharmaceutical Technology, Jadavpur University, Kolkata, India

## Key Words

autodock, DT-diaphorase, hydrogen peroxide, lawsone, NADPH, THN

## Abstract

**Objectives:** Lawsone (1,4 naphthoquinone) is a non redox cycling compound that can be catalyzed by DT diaphorase (DTD) into 1,2,4-trihydroxynaphthalene (THN), which can generate reactive oxygen species by auto oxidation. The purpose of this study was to evaluate the toxicity of the phytomarker 1,4 naphthoquinone and its metabolite THN by using the molecular docking program AutoDock 4.

**Methods:** The 3D structure of ligands such as hydrogen peroxide (H<sub>2</sub>O<sub>2</sub>), nitric oxide synthase (NOS), catalase (CAT), glutathione (GSH), glutathione reductase (GR), glucose 6-phosphate dehydrogenase (G6PDH) and nicotinamide adenine dinucleotide phosphate hydrogen (NADPH) were drawn using hyperchem drawing tools and minimizing the energy of all pdb files with the help of hyperchem by MM<sup>+</sup> followed by a semi-empirical (PM3) method. The docking process was studied with ligand molecules to identify suitable dockings at protein binding sites through annealing and genetic simulation

algorithms. The program auto dock tools (ADT) was released as an extension suite to the python molecular viewer used to prepare proteins and ligands. Grids centered on active sites were obtained with spacings of 54 × 55 × 56, and a grid spacing of 0.503 was calculated. Comparisons of Global and Local Search Methods in Drug Docking were adopted to determine parameters; a maximum number of 250,000 energy evaluations, a maximum number of generations of 27,000, and mutation and crossover rates of 0.02 and 0.8 were used. The number of docking runs was set to 10.

**Results:** Lawsone and THN can be considered to efficiently bind with NOS, CAT, GSH, GR, G6PDH and NADPH, which has been confirmed through hydrogen bond affinity with the respective amino acids.

**Conclusion:** Naphthoquinone derivatives of lawsone, which can be metabolized into THN by a catalyst DTD, were examined. Lawsone and THN were found to be identically potent molecules for their affinities for selected proteins.

## 1. Introduction

Stains from medicinal plants may be used to define and examine bulk tissue and cell populations and to

Received: Feb 25, 2015 Reviewed: May 12, 2015 Accepted: May 13, 2015

© This is an Open-Access article distributed under the terms of the Creative Commons Attribution Non-Commercial License (<http://creativecommons.org/licenses/by-nc/3.0/>) which permits unrestricted noncommercial use, distribution, and reproduction in any medium, provided the original work is properly cited.

© This paper meets the requirements of KS X ISO 9706, ISO 9706-1994 and ANSI/NISO Z39.48-1992 (Permanence of Paper).

\*Corresponding Author

Subhash C. Mandal, Pharmacognosy and Phytotherapy Research Laboratory, Division of Pharmacognosy, Department of Pharmaceutical Technology, Jadavpur University, Kolkata-700032, India.

Tel: +0091-9433098372 Fax: +0091-33- 2837-1078

E-mail: [subhashmandal@yahoo.com](mailto:subhashmandal@yahoo.com)

© 2015 Korean Pharmacopuncture Institute

<http://www.journal.ac>

classify different blood cells or organelles within individual cells [1]. The medicinal plant henna produces a red orange dye molecule, which is known as hennotannic acid (lawsone), which has an affinity for bonding with proteins and has been used to dye skin, fingernails, hair, leather, silk and wool [2].

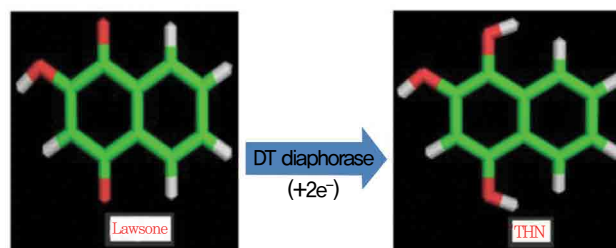
1,4-naphthoquinone (lawsone) is able to induce oxidative damages as a consequence of its ability to undergo redox cycling and to generate reactive oxygen species. Lawsone (2-hydroxy 1,4-naphthoquinone) is an active naphthoquinone derivative and a non redox cycling compound. The apparent lack of oxidative activity of lawsone has been explained by the stabilizing influence of its acidic 2-hydroxy group, which is thought to impede its ability to redox cycle (Fig. 1). Methylation of the 2-hydroxy group yields a quinone with a much greater ability to redox cycle. Some suggest the involvement of a superoxide lawsone, and oxidative stress probably arises when the naphthoquinone part in lawsone is reduced to a semi quinone by enzymatic systems. DT-diaphorase (DTD) is known to catalyze a two electron reduction of lawsone to its hydroquinone, 1,2,4-trihydroxynaphthalene (THN).

Previous studies on lawsone have had conflicting results in that lawsone cannot generate reactive oxygen species at a rate sufficient to exceed the capacity of the cells to remove them by nicotinamide adenine dinucleotide phosphate hydrogen (NADPH) quinone reductase, which eliminates lawsone toxicity through the kidneys. The electron acceptor specificity of DTD is very similar to that of NADPH quinone reductase, and induction of this enzyme response minimizes the toxicity of lawsone. The scientific committee on cosmetic products and non food products intended for consumers of the European Union concluded that lawsone had mutagenic/genotoxicity and considered banning lawsone for the use as a non oxidizing hair dye, as well as for other uses [3]. Repeated doses of lawsone can provoke an anemic response with a genetic deficiency in erythrocytic glucose 6-phosphate dehydrogenase (G6PDH) activity and organs damage [4]. Some studies have concluded that lawsone is mutagenic, but not others [5].

Prediction of the toxicities of the ligands on proteins plays a major role in drug discovery through in-silico modeling using different approaches. Due to the toxic and the non toxic properties of lawsone, in the present study, a preliminary molecular docking analysis of lawsone and its metabolite THN was done by using AutoDock docking tool 4.0. Proteins such as hydrogen peroxide ( $H_2O_2$ ), nitric oxide synthase (NOS), catalase (CAT), glutathione (GSH), glutathione reductase (GR), G6PDH and NADPH were subjected to energy optimization by adding solvation effects for predicting the binding affinities of lawsone and THN ligand molecules for their respective receptor binding sites.

## 2. Materials and Methods

Protein data bank (PDB) chemical structures of the ligands lawsone and THN and of the proteins receptors  $H_2O_2$ , NOS, CAT, GSH, GR, G6PDH and NADPH were used in this study. AutoDock 4.0 and python molecular viewer were used for the docking analysis. The 3D structures of



**Figure 1** Illustrations of 2-hydroxy-1,4-naphthoquinone and 1,2,4-trihydroxynaphthalene.

the ligands were drawn using hyperchem drawing tools and were then saved as a pdb file. Energy minimization of all pdb files was carried out with the help of hyperchem by MM<sup>+</sup> and by using a semi-empirical (PM3) method. The proteins models were derived with the help of a pbd online search. The ligands and the proteins were taken for the docking procedure, and the docking studies were done by using the program AutoDock 4. The docking process begins with a ligand molecule so that suitable dockings at the protein binding sites can be identified through annealing and genetic simulation algorithms.

The program auto dock tools (ADT) released as an extension suite to the python molecular viewer was used to prepare the proteins and the ligands. For the macromolecules downloaded from the PDB server [6], polar hydrogen was added; then kollman united atom charges and atomic solvation parameters were assigned. The grid maps of the docking studies were computed using the Auto Grid 4.0 included in the AutoDock 4.0 distributions. Grids centered on active sites were obtained by using spacing grid size of  $54 \times 55 \times 56$ , with a calculated grid spacing of 0.503. The GA-local search (GA-LS, A Comparison of Global and Local Search Methods in Drug Docking) method was adopted to perform the molecular docking. The parameters for the GA-LS were defined as follows: a maximum number of 2,500,000 energy evaluations, a maximum number of generations of 27,000, and mutation and crossover rates of 0.02 and 0.8, respectively. The number of docking runs was set to 10. After docking, structures generated were assigned to clusters based on a tolerance of 1 Å for the root means square deviation (RMSD) from the lowest energy structure. The binding energy, ligand efficiency, intermolecular force, and van der Waal interactions between docked potent agents and macromolecules were analyzed using ADT (version 1.5.4).

## 3. Results

In the present study, the three dimensional structures of  $H_2O_2$ , NOS, CAT, GSH, GR, G6PDH and NADPH were retrieved from the PDB site [6]. Ligands were docked with the candidate proteins by forming grids and were saved in docking log file (dlg) format in AutoDock 1.5.4. The docking calculation in Auto Dock was performed by using the receptor protein and ligands, and the results were viewed by reading the docking log file (dlg) in the analyze menu. The dlg file was opened, and different conformations were

**Table 1** Comparison of the protein binding energies and other parameters of lawsone and THN

Protein	H <sub>2</sub> O <sub>2</sub>	NOS	CAT	GLU	GR	G6PDH	NADPH
Ligands	Lawsone/ THN	Lawsone/ THN	Lawsone/ THN	Lawsone/ THN	Lawsone/ THN	Lawsone/ THN	Lawsone/ THN
Parameters							
Binding energy	14.36 /0.08	11.55 /— 6.76	— 5.62 /12.14	— 4.24 /— 5.43	— 5.12 /— 5.17	— 4.36 /— 4.12	— 5.04 /— 5.67
Ligand efficiency	1.1 /0.01	0.89 /— 0.52	— 0.43 /0.93	— 0.33 /— 0.42	— 0.39 /— 0.40	— 0.34 /— 0.32	— 0.39 /— 0.44
Inhibitory constant	0.0 /0.0	11.06	76.44	779.98 /105.1	175.92 /161.31	636.6 /956.69	202.07 /69.39
Intermol energy	14.38 /— 0.35	11.54 /— 7.16	— 5.6 /12.15	— 4.84 /— 5.85	— 5.11 /— 5.52	— 4.34 /— 4.88	— 5.04 /— 6.01
van der Waal energy	14.38 /— 0.35	11.54 /— 7.03	— 5.55 /12.12	— 4.3 /— 5.78	— 5.06 /— 5.38	— 4.06 /— 4.75	— 5.04 /— 5.55
Electrostatic energy	0.0 /— 0.01	0.03 /— 0.13	— 0.05 /0.03	— 0.54 /— 0.07	— 0.04 /— 0.14	— 2.8 /— 0.13	0.01 /— 0.46
Total internal energy	— 0.29 /— 0.39	— 0.28 /— 0.42	— 0.29 /— 0.28	— 0.22 /— 0.40	— 0.29 /— 0.48	— 0.29 /— 0.06	— 0.28 /— 0.48
Torsional energy	0.27 /0.82	0.27 /0.82	0.27 /0.27	0.82 /0.82	0.27 /0.82	0.27 /0.82	0.27 /0.82
RMSD	24.90 /21.44	44.36 /44.90	80.77 /44.35	40.52 /80.73	87.65 /86.62	108.17 /103.8	28.53 /27.93

The binding affinities were averages of 10 individual dockings of ligands and receptors. The values for all parameters are in units of kcal/mol<sup>-1</sup>. THN, 1,2,4-trihydroxynaphthalen; H<sub>2</sub>O<sub>2</sub>, hydrogen peroxide; NOS, nitric oxide synthase; CAT, catalase; GLU, glutamic acid; GR, glutathione reductase; G6PDH, glucose 6-phosphate dehydrogenase; NADPH, nicotinamide adenine dinucleotide phosphate hydrogen; RMSD, root means square deviation.

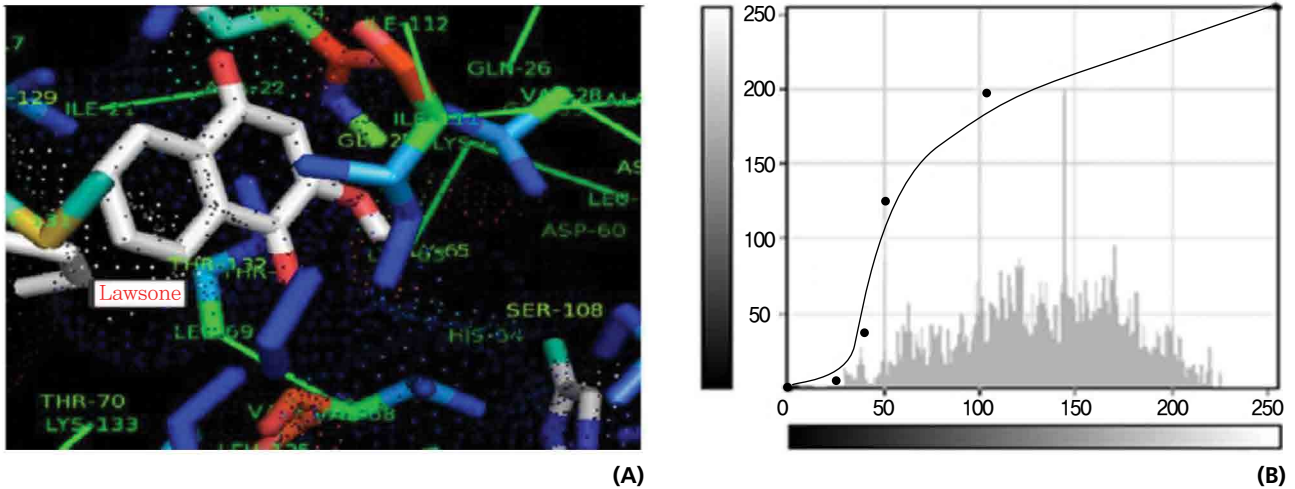
loaded in increasing order of energy; then, the play option was selected to visualize the conformation. The docking properties were checked, and the energy optimized ligand was subjected to a docking analysis to check for its efficiency as an agonist of proteins. Similarly, the docking calculator was set for proteins with lawsone and THN, and the best binding modes were analyzed (Table 1).

On the basis of molecular docking, the H<sub>2</sub>O<sub>2</sub> binding interactions of lawsone and THN were evaluated. This study showed that lawsone and THN did not have interactions with H<sub>2</sub>O<sub>2</sub> to any great extent, which was confirmed by the positive values for the binding energies, which were 14.36 for lawsone and 0.08 for THN. The results are presented in the Figs. 2, 3; none of the catalytic residues took part in these interactions.

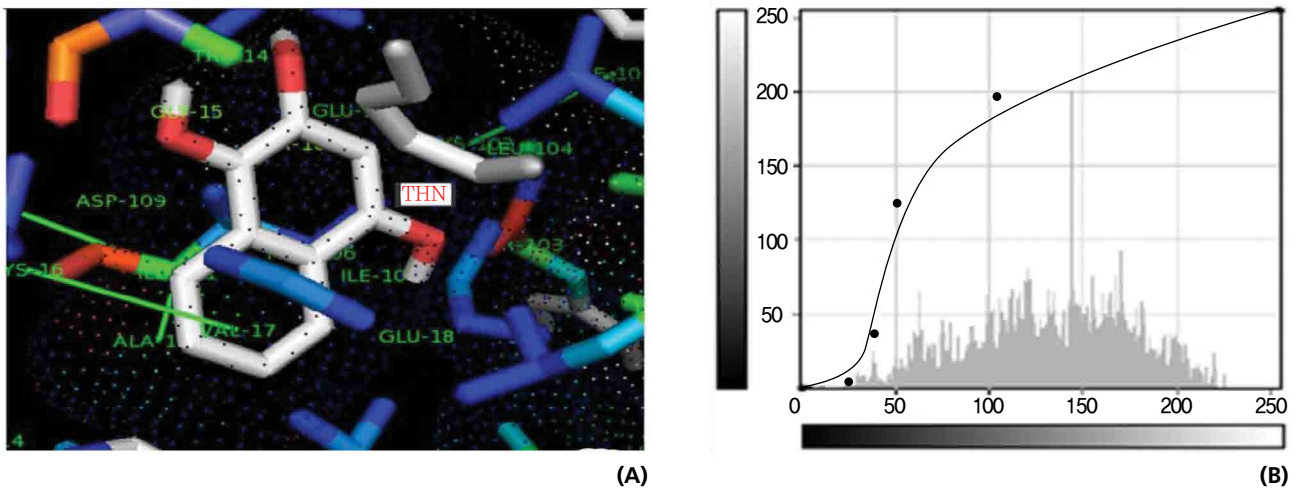
The NOS protein was chosen, and the docking binding energy of lawsone energy for NOS was found to be 11.55 kcal/mol<sup>-1</sup>; that for THN was found to be — 6.76 kcal/mol<sup>-1</sup>. The latter result was confirmed through the major docking

parameters: an intermolecular energy of — 7.16, a van der Waal force of — 7.03, an electrostatic energy of — 0.13, and a total internal energy 0.42, with all values being in units of kcal/mol<sup>-1</sup>. The positional affinities of one hydroxy (OH) of THN was identified for a proline oxygen atom, a leucine nitrogen atom, and a glycine nitrogen atom 3.3 kcal/mol<sup>-1</sup>, 3.2 kcal/mol<sup>-1</sup> and 3.3 kcal/mol<sup>-1</sup>, respectively. The 2-hydroxy of THN shows amino acid sites that have an affinities for glycine nitrogen, proline oxygen and leucine oxygen: 2.7, 2.9, 3.2 and 3.3 kcal/mol<sup>-1</sup>, respectively (Figs. 4, 5).

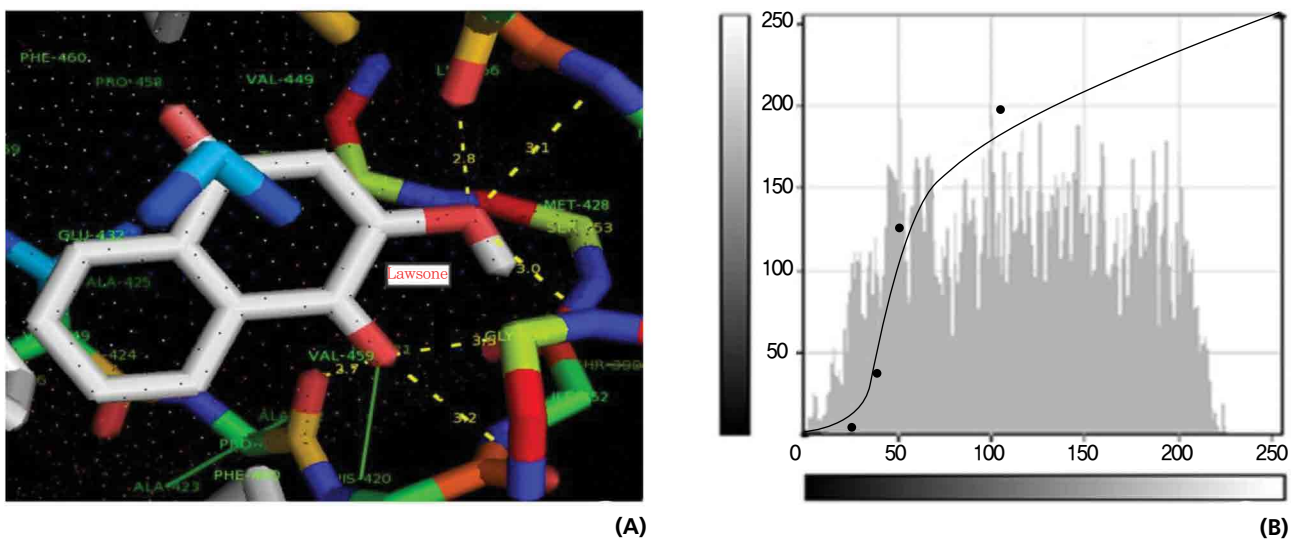
A protein catalase was selected for lawsone and THN molecular binding. The study result showing a better affinity of lawsone for the CAT interaction was confirmed through binding energy, ligand efficiency, intermolecular energy, van der Waal energy, electrostatic energy and total intermolecular energy measurements. Fig. 6 presents the hydrogen intermolecular forces of lawsone with alanine and arginine through oxygen and nitrogen atoms at 2.8, 2.9, 3.3 and 3.4 kcal/mol<sup>-1</sup>, respectively. The hydrogen atom free



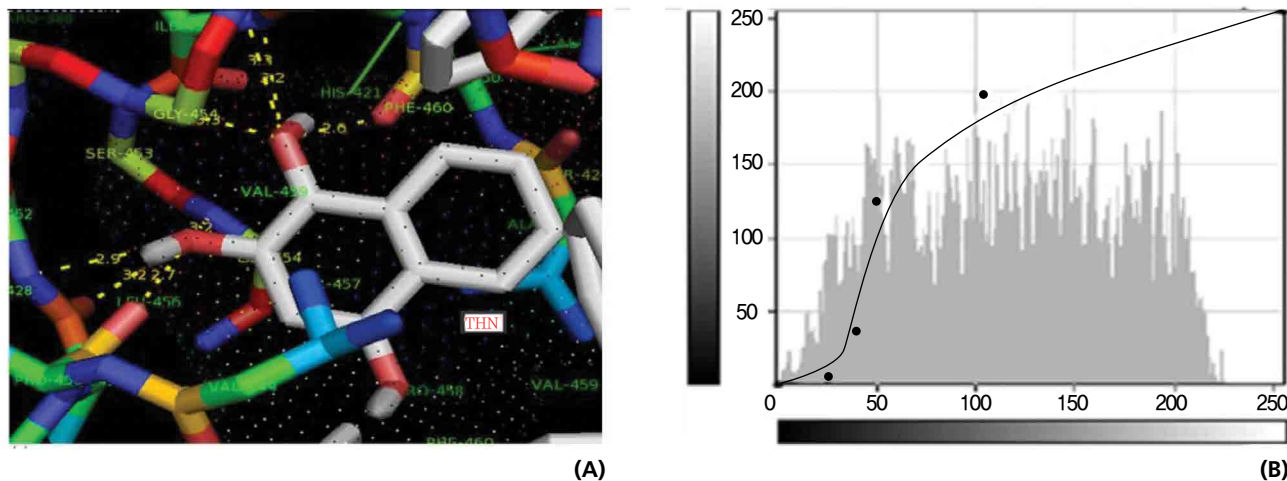
**Figure 2** Docking interactions of lawsonone; different views of the lawsonone interactions involved at the active sites in hydrogen peroxide. (a) The yellow dotted lines indicate the presence of hydrogen bond interaction (none). (b) Binding energy and binding reaction graphical tool.



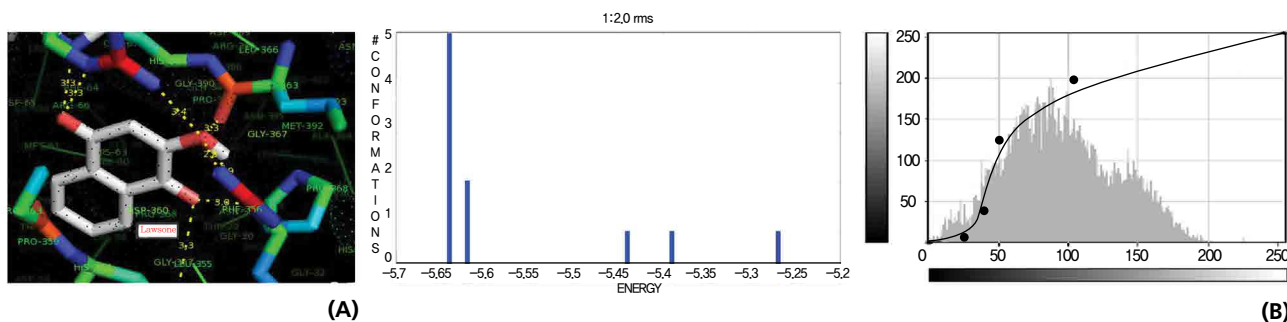
**Figure 3** Docking interactions of 1,2,4-trihydroxynaphthalen (THN); different views of the THN interactions involved at the active sites in hydrogen peroxide. (a) The yellow dotted lines indicate the presence of hydrogen-bond interactions (none). (b) Binding energy and binding reaction graphical tool.



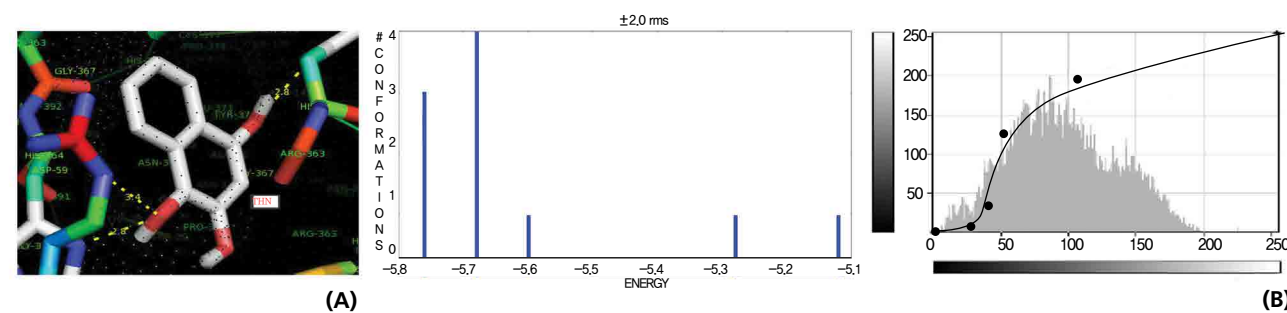
**Figure 4** Docking interactions of lawsonone; different views of the lawsonone interactions involved at the active sites in nitric oxide synthase. (a) The yellow dotted lines indicate the presence of hydrogen bond interactions. (b) Binding energy and binding reaction graphical tool.



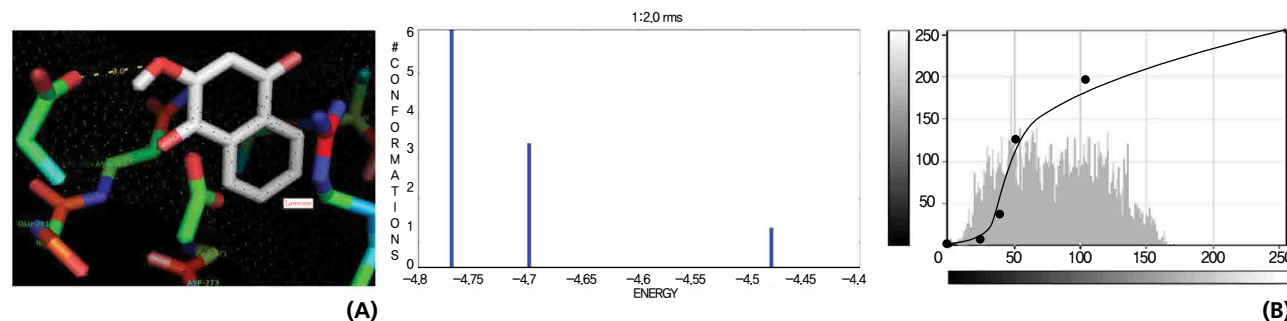
**Figure 5** Docking interactions of 1,2,4-trihydroxynaphthalen (THN); different views of the THN interactions involved at the active sites in nitric oxide synthase. (a) The yellow dotted lines indicate the presence of hydrogen bond interactions. (b) Binding energy and binding reaction graphical tool.



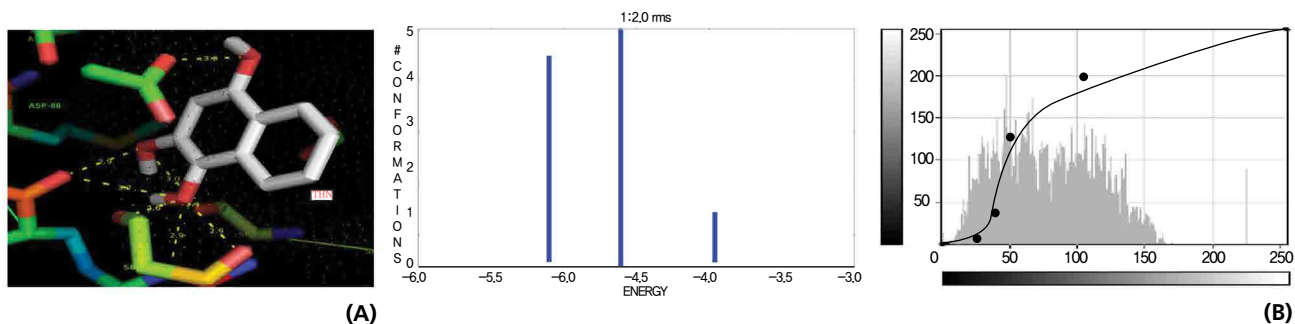
**Figure 6** Docking interactions of lawsone; different views of the lawsone interactions involved at the active sites in catalase. (a) The yellow dotted lines indicate the presence of hydrogen bond interactions. (b) Binding energy and binding reaction graphical tool.



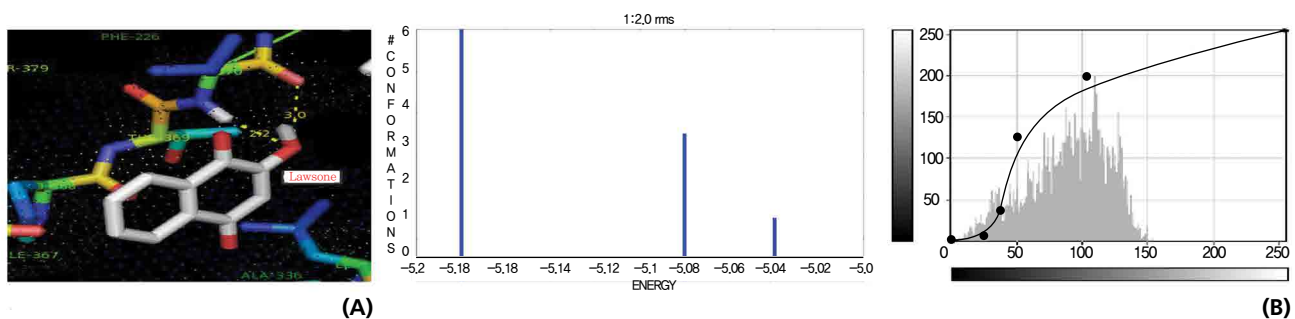
**Figure 7** Docking interactions of THN; different views of the THN interactions involved at the active sites in catalase. (a) The yellow dotted lines indicate the presence of hydrogen-bond interactions. (b) Binding energy and binding reaction graphical tool.



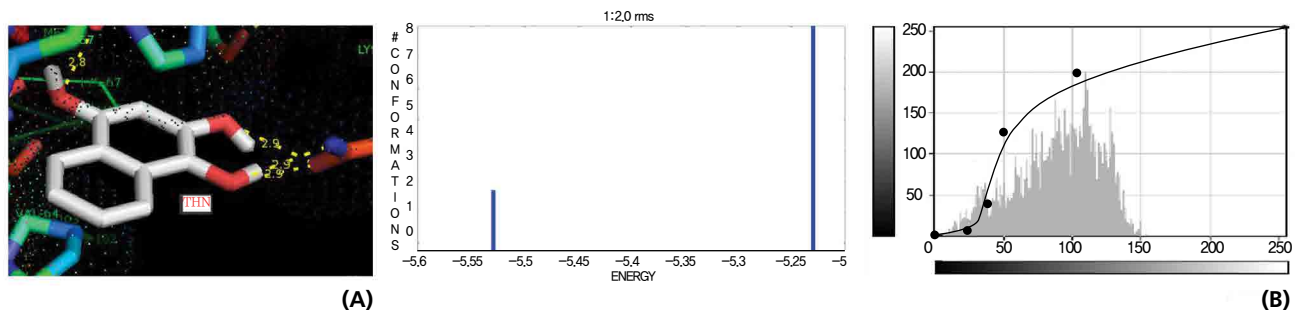
**Figure 8** Docking interactions of lawsone; different views of the lawsone interactions involved at the active sites in glutathione. (a) The yellow dotted lines indicate the presence of hydrogen-bond interactions. (b) Binding energy and binding reaction graphical tool.



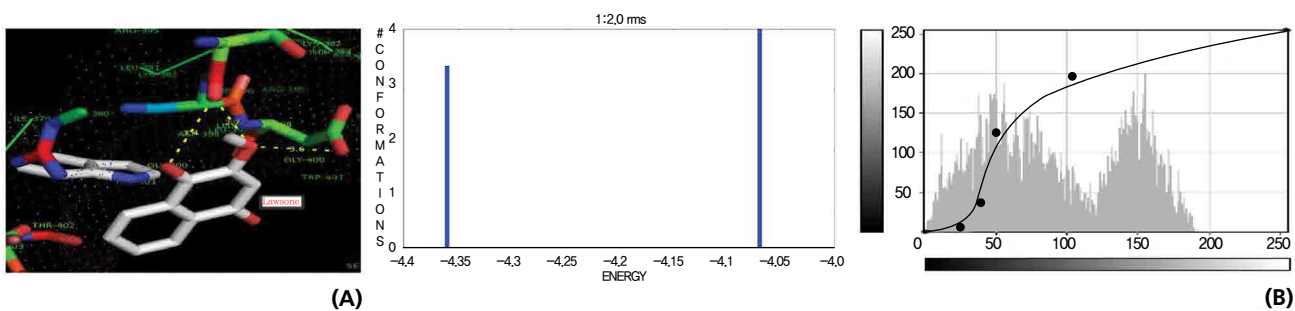
**Figure 9** Docking interactions of THN; different views of the THN interactions involved at the active sites in glutathione. (a) The yellow dotted lines indicate the presence of hydrogen-bond interactions. (b) Binding energy and binding reaction graphical tool.



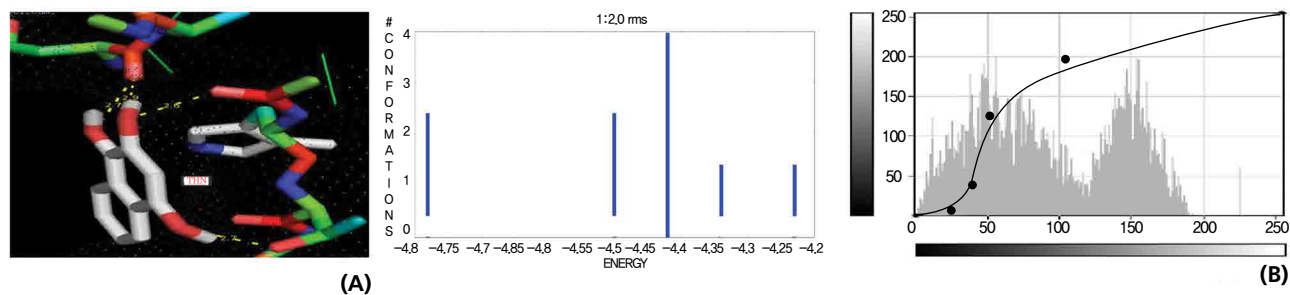
**Figure 10** Docking interactions of lawsone; different views of the lawsone interactions involved at the active sites in glutathione reductase (GR). (a) The yellow dotted lines indicate the presence of hydrogen-bond interactions. (b) Binding energy and binding reaction graphical tool.



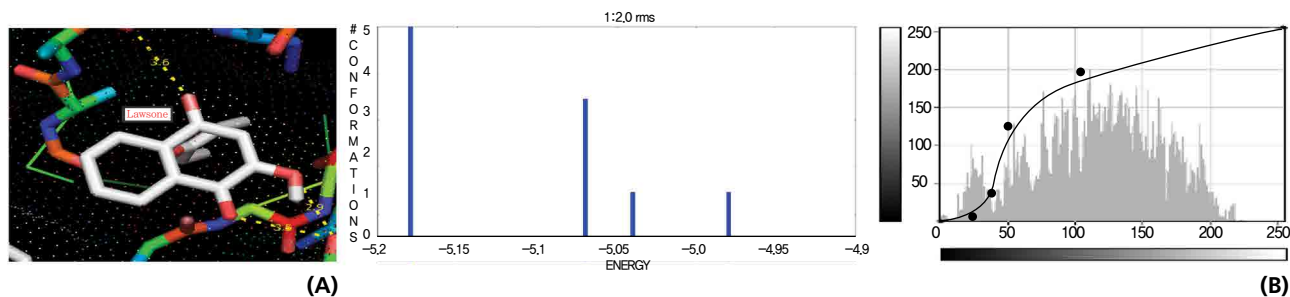
**Figure 11** Docking interactions of THN; different views of the THN interactions involved at the active sites in glutathione reductase. (a) The yellow dotted lines indicate the presence of hydrogen-bond interactions. (b) Binding energy and binding reaction graphical tool.



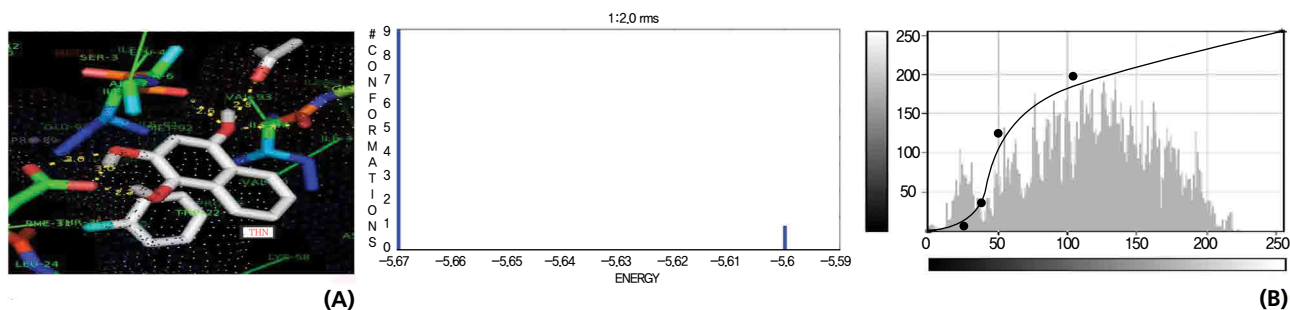
**Figure 12** Docking interactions of lawsone; different views of the lawsone interactions involved at the active sites in glucose 6-phosphate dehydrogenase. (a) The yellow dotted lines indicate the presence of hydrogen-bond interactions. (b) Binding energy and binding reaction graphical tool.



**Figure 13** Docking interactions of THN; different views of the THN interactions involved at the active sites in glucose 6-phosphate dehydrogenase. (a) The yellow dotted lines indicate the presence of hydrogen-bond interactions. (b) Binding energy and binding reaction graphical tool.



**Figure 14** Docking interactions of lawsone; different views of the lawsone interactions involved at the active sites in NADPH. (a) The yellow dotted lines indicate the presence of hydrogen-bond interactions. (b) Binding energy and binding reaction graphical tool.



**Figure 15** Docking interactions of THN; different views of the HN interactions involved at the active sites in NADPH. (a) The yellow dotted lines indicate the presence of hydrogen-bond interactions. (b) Binding energy and binding reaction graphical tool.

force for one oxy (O) position of lawsone with amino acid residues such as alanine (through oxygen) and threonine (through nitrogen) were evaluated as 3.0 and 3.3 kcal/mol<sup>-1</sup>, respectively, and that of 4-O of lawsone with arginine and alanine amino acids through nitrogen was 3.3 kcal/mol<sup>-1</sup> (Figs. 6, 7).

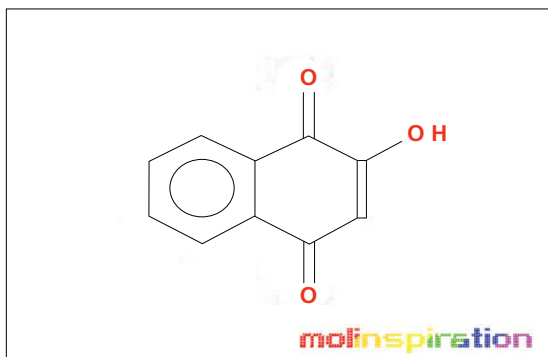
A docking study comparison was made between lawsone and THN for the GSH receptor interaction. Significant variations were observed in the affinity of THN for GSH with respect to binding energy (− 5.43 kcal/mol<sup>-1</sup>), ligand efficiency (− 0.42 kcal/mol<sup>-1</sup>), intermolecular energy (− 5.85 kcal/mol<sup>-1</sup>), van der Waal force (5.78 kcal/mol<sup>-1</sup>), total intermolecular energy (− 0.40 kcal/mol<sup>-1</sup>) and RMSD (80.74 kcal/mol<sup>-1</sup>), THN shows a dominant molecular interaction with the GSH receptor. Through the positional affinities of OH, 2-hydroxy (= OH) and 4-hydroxy (= OH) of THN for amino acids, their molecular affinities for aspartine, serine and arginine were predicted. The results are as follows: 1 OH with aspartine oxygen at 3.0 kcal/mol<sup>-1</sup>, 2-hydroxy with serine oxygen at 2.4, 2.6 and 3.0 kcal/mol<sup>-1</sup>, and 4-hydroxy

with arginine oxygen and nitrogen at 2.9 and 3.2 kcal/mol<sup>-1</sup>, respectively. The results in Figs. 8, 9 show that the additional amino acids interactions were found and analyzed for the 1-OH and 4-hydroxy (= OH) positions of THN with nitrogen atoms of aspartine (2.8 kcal/mol<sup>-1</sup>), threonine (3.4 kcal/mol<sup>-1</sup>) and histidine (2.8 kcal/mol<sup>-1</sup>).

The GR interaction was investigated for another protein affinity evaluation for lawsone and THN. The four docking parameters, binding energy, ligand efficiency, intermolecular energy and van der Waal force showed almost one and the same interactions of lawsone and THN with protein GSH reductase: − 5.12, − 0.39, − 5.11, and − 5.06 kcal/mol<sup>-1</sup> for lawsone and − 5.17, − 0.40, − 5.52, and − 5.38 kcal/mol<sup>-1</sup> for THN, respectively. The electrostatic energy and the total intermolecular energy showed the leading molecular interactions for THN rather than for lawsone: − 0.14 and − 0.48 kcal/mol<sup>-1</sup>, respectively. The 2-hydroxy position of lawsone interacted with the one mole oxygen of valine and one mole hydrogen of threonine: 2.2 and 3.0 kcal/mol<sup>-1</sup>, respectively. In the case of THN amino acid in-

# molinspiration

MolinspirationmiSMILES Oc2cc(=O)c1cccc1c2=O



Molinspiration property engine v2013.09

miLogP	1.376
TPSA	54.37
natoms	13.0
MW	174.155
nON	3
nOHNH	1
nviolations	0
nrotb	0
volume	146.603

[Get data as text](#) (for copy / paste).

[Get 3D geometry](#) BETA

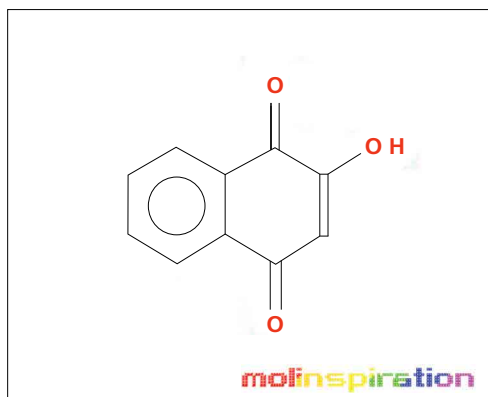
This was request 3 out of 1000 available this month for your site 180.215.119.70  
With technology from Molinspiration you can easily setup similar service also directly on your intranet.  
Comments or questions ? See our [FAQ](#) and do not hesitate to provide feedback or contact us by email!

[New molecule](#) [Predict bioactivity](#) [About properties](#) [Molinspiration RESTful services](#) [Molinspiration home](#)

©2014 Molinspiration Cheminformatics [Terms of service](#)

# molinspiration

Molinspiration miSMILES Oc2cc(=O)c1cccc1c2=O



Molinspiration bioactivity score v2011.06

GPCRligand	-1.00
Ion channel modulator	-0.37
Kinase inhibitor	-0.49
Nuclear receptor ligand	-0.92
Protease inhibitor	-1.09
Enzyme inhibitor	-0.07

[Get data as text](#) (for copy / paste).

[Get 3D geometry](#) BETA

This was request 4 out of 1000 available this month for your site 180.215.119.70  
With technology from Molinspiration you can easily setup similar service also directly on your intranet.  
Comments or questions ? See our [FAQ](#) and do not hesitate to provide feedback or contact us by email!

[New molecule](#) [Calculate properties](#) [About bioactivity score](#) [Molinspiration RESTful services](#) [Molinspiration home](#)

©2014 Molinspiration Cheminformatics [Terms of service](#)

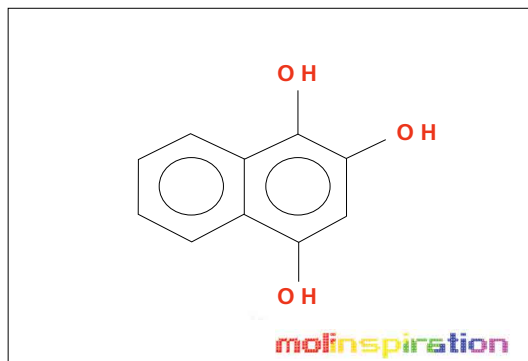
**Figure 16** Molinspiration computational evaluations of the molecular properties and the bioactivity of lawsone.

teractions, one-hydroxy had high affinities for the nitrogen and the oxygen of glycine (2.8 kcal/mol<sup>-1</sup>), two-hydroxy had a high affinity for the oxygen of glycine (2.9 kcal/mol<sup>-1</sup>), and four-hydroxyl had a high affinity for proline oxygen (2.8 kcal/mol<sup>-1</sup>) (Figs. 10, 11).

Efficient molecular interactions with G6PDH were stud-

ied for lawsone and THN. The results indicate that lawsone shows a better affinity for the docking protein G6PDH than THN does (Table 1). The active sites of one-oxygen and 2-hydroxy (= OH) of the lawsone molecule interacted with oxygen affinity sites of threonine and aspartine at 2.7, 3.4 and 3.6 kcal/mol<sup>-1</sup> (Fig. 12). However, the 1, 2, and 3 hy-




Molinspiration miSMILES Oc2cc(O)c1cccc1c2O

Molinspiration property engine v2013.09

miLogP	2.09
TPSA	60.684
natoms	13.0
MW	176.171
nON	3
nOHNH	3
nviolations	0
nroth	0
volume	152.089

[Get data as text](#) (for copy / paste).[Get 3D geometry](#) BETA

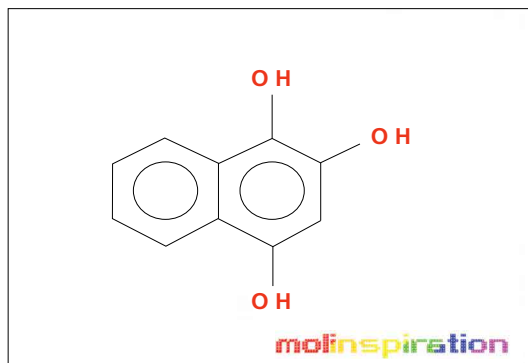
This was request 5 out of 1000 available this month for your site 180.215.119.70

With technology from Molinspiration you can easily setup similar service also directly on your intranet.

Comments or questions ? See our FAQ and do not hesitate to provide feedback or contact us by email!

[New molecule](#) [Predict bioactivity](#) [About properties](#) [Molinspiration RESTful services](#) [Molinspiration home](#)

©2014 Molinspiration Cheminformatics [Terms of service](#)


Molinspiration miSMILES Oc2cc(O)c1cccc1c2O

Molinspiration bioactivity score v2011.06

GPCRligand	-0.57
Ion channel modulator	-0.22
Kinase inhibitor	-0.42
Nuclear receptor ligand	-0.42
Protease inhibitor	-0.90
Enzyme inhibitor	-0.06

[Get data as text](#) (for copy / paste).[Get 3D geometry](#) BETA

This was request 6 out of 1000 available this month for your site 180.215.119.70

With technology from Molinspiration you can easily setup similar service also directly on your intranet.

Comments or questions ? See our FAQ and do not hesitate to provide feedback or contact us by email!

[New molecule](#) [Calculate properties](#) [About bioactivity score](#) [Molinspiration RESTful services](#) [Molinspiration home](#)

©2014 Molinspiration Cheminformatics [Terms of service](#)

**Figure 17** Molinspiration computational evaluations of the molecular properties and the bioactivity of THN.

droxy positions of THN, because of the oxygen affinities, turned out to have better amino acid residual interactions with aspartine (2.7 and 2.9 kcal/mol<sup>-1</sup>), glycine (2.6 kcal/mol<sup>-1</sup>), and threonine (2.7 kcal/mol<sup>-1</sup>) (Fig. 13).

Figs. 14, 15 illustrate the interactions of NADPH with lawsone and THN, and the obtained results shows significant molecular affinities. Threonine, alanine, aspartine and

leucine of the amino acids made possible interactions with the ortho, the meta and the para positions of lawsone and THN. The macromolecular free force hydrogen-bond interactions of THN were found to have binding affinities of 2.6, 2.7, 2.8, 2.8, 3.0 and 3.0 kcal/mol<sup>-1</sup>; the lawsone results were 2.9, 3.5 and 3.6 kcal/mol<sup>-1</sup> (Figs. 14, 15). The results for lawsone binding with threonine and alanine hydrogen

bindings through oxygen were found to be 2.9, 3.5 and 3.6 kcal/mol<sup>-1</sup>.

#### 4. Discussion

Since ancient times, medicinal plants, due to their bioactive phytochemicals, have used by humans as treatments for many diseases [7]. Medicinal plants represent complex mixtures of chemical components with biological activities when used concomitantly [8-10]. However, studies have demonstrated that even plants that are used popularly for therapeutic purposes can exhibit hepatotoxicity and nephrotoxicity effects [11-13]. This shows the importance of conducting toxicological studies based on protocols elaborated by regulatory agencies to evaluate the safety of medicinal plants.

Lipophilicity and solubility are the key molecular properties in the absorption of drugs in a biological system. Used to predict the oral bioavailability of a drug, Lipinski's rule of five (log P, molecular weight, number of atoms, number of hydrogen donors, number of hydrogen acceptors, number of violations, number of rotatable bonds) is considered in the drug discovery process. Computational application tools facilitate learning about the pharmacokinetic properties of individual drug molecules. Many changes and improvements have marked the area of medicinal chemistry, and new approaches to improve drug efficacy by use of technological resources have been developed. In Molinspiration, analyses of the different approaches by using computers are directed to the evaluation of chemistry and physical chemistry data that influences the pharmacokinetic properties of drugs. The molecular and bioactive properties of lawsone and THN are presented in Figs. 16, 17 [14]. The selected ligands satisfy Lipinski's rule of five as log p < 5, molecular weight < 500 g/mol, number of hydrogen bond acceptors < 10, number of hydrogen bond donors < 5 and number of rotatable bonds < 10.

Protein and substrate associations allow us to predict and grade the structures on the basis of their bonds and interactions [15]. Optimization of the synchronous geometrics of the ligands, followed by the docking procedure, enhanced the docking precision and the binding energy [16]. A drug molecule is triggered when the binding of a small molecule to the receptor protein is perfect. Such a protein ligand interaction is comparable to the lock and key principle, in which the lock encodes the protein and the key, is an ensemble by the ligand. The major driving force for forming a bond appears to be a hydrophobic interaction whose specificity is, however, controlled by hydrogen bonding interactions [17]. The receptors remain rigid throughout docking while the ligands are allowed to rotate freely at the active site to achieve site suitable conformations. AutoDock 4.0 generated 10 docking simulations at the active sites of the ligands, and among those, the most stable orientation was chosen according to the value of the binding energy. The most stable conformation possessed minimum energy which explained the mechanism through which the ligand occupied the active site.

Exposure to free radicals from a variety of sources has led organisms to develop a series of defense mechanisms [18].

A fraction of this oxidant inevitably escapes cellular defense, however, and damage to DNA occurs through any of a large complex group of reactions ranging from oxidation of deoxyribose and base moieties to strand breaks. Enzymatic and non enzymatic antioxidants are involved in defense mechanisms such as preventive mechanisms, repair mechanisms, physical defenses and antioxidant defenses. Several of the oxidases are capable of combining oxygen with hydrogen ions derived from different intracellular chemicals to form H<sub>2</sub>O<sub>2</sub>. H<sub>2</sub>O<sub>2</sub> is an excited oxygen species that arises during irradiation or as a byproduct of aerobic metabolism and is used in association with CAT, another oxidase enzyme present in large quantities in peroxisomes, to oxidize many substances that might otherwise be poisonous to the cell. The present study concludes that lawsone and THN do not show interactions with H<sub>2</sub>O<sub>2</sub>.

Nitric oxide (NO) is a gaseous signaling molecule that readily diffuses across cell membranes and regulates a wide range of physiological and pathophysiological processes, including cardiovascular, inflammation, immune, and neuronal functions. NO is synthesized from L-arginine and molecular oxygen by using calcium calmodulin sensitive NOS. NO has a significant effect on vascular smooth muscle tone and blood pressure through endothelium dependent vasodilation. NO may have an additional role in relaxing the airway's smooth muscle, thus acting as a bronchodilator. Vascular plaque formation in hypercholesterolemia leads to reduced NO formation; in addition, NO may act as an antioxidant, blocking the oxidation of low density lipoproteins (LDL) and thus preventing the formation of foam cells in the vascular wall. Abnormal activation of platelets is associated with increased platelet adhesion and aggregation and, therefore, a higher incidence of thrombotic events. Platelet activation also leads to the release of smooth muscle mitogens such as growth factors and thromboxane. NO is a potent inhibitor of platelet adhesion and aggregation. Thus, endothelial dysfunction may decrease in NO generation, which leads to abnormal platelet function. Ischemic and reperfusion injuries at the time of organ harvesting, preservation and revascularization initiate myointimal proliferation, which is also promoted by the continuous immune response to an allogeneic organ graft. By reducing free radical toxicity under these conditions, NO may act as a cytoprotective agent, inhibiting platelet and neutrophil aggregation and adhesion to the vascular wall. NO modifies neurotransmitter release in different areas of the brain. According to a proposal, the NO thus produced rapidly diffuses to the pre-synaptic nerve terminal where guanyl cyclase is activated to yield current Good Manufacturing Practice (cGMP), thus facilitating the release of transmitters synthesized in post synaptic sites following the opening of Ca<sup>2+</sup> channels and the activation of NOS. The selected ligands show NOS receptor binding affinity through hydrogen bond interactions.

Cells have an elaborated defense system to destroy reactive oxygen species, including CAT (enzymatic) and GSH (non enzymatic), that convert reactive oxygen species to harmless products. CAT is a hemoprotein containing four heme groups, which is found in blood, bone marrow, mucous membrane, the kidneys and the liver. In addition to possessing peroxidase activity, it is able to use one mole-

cule of hydrogen peroxidase as a substrate electron donor and another molecule of  $H_2O_2$  as an oxidant or electron acceptor. Its function is assumed to be the conversion of the  $H_2O_2$  produced by  $\beta$ -oxidation of water and oxygen.

GSH is an essential component to the body's natural defense system and is composed three amino acids (cysteine, glycine and glutamate). GSH is a primary source of protection for the skin and for the lens, cornea and retina of the eye against radiation damage. It also promotes biochemical detoxification by liver, kidneys, lungs, epithelium of the intestine and other organs through cytochrome P450 activation in the biological system. The ongoing mechanism supports that CAT, GSH receptors, interacted significantly with the ligands of lawsone and THN.

G6PDH is the rate limiting enzyme in the pentose phosphate pathways and produce ribose 5-phosphate and NADH (the intracellular reducing agent in the antioxidant action of peroxidase). A component of the antioxidant system is G6PDH, which is very important for cell survival. G6PDH is the major source of NADPH (the pentose phosphate pathway) and it is used by GSH, thioredoxin systems, to generate reduced forms that will then be used in antioxidant roles. NADPH is a key hydrogen donor for the reduction of oxidized GSH to a tripeptide known as reduced GSH. This tripeptide is used as a reducing agent by GSH peroxidase, which is involved in the detoxification of  $H_2O_2$ . Decreases in the G6PDH activity and as a result, the NADPH level will damage endothelial cells, the kidneys, the liver and red blood cells, which leads to oxidative damage, cellular dysfunction and organ damages. During detoxification of free radicals, GSH is converted to an oxidized form, leading to a reduction in the GSH levels in cellular components. The regeneration of GSH occurs by the action of GSH reductase, which catalyzes the reduction of oxidized GSH to GSH. Of the results for lawsone and THN confirmed molecular interactions with G6PDH and NADPH.

The results of the present investigation are a clear indication that both lawsone and THN can be considered to efficiently bond with NOS, CAT, GSH, G6PDH and NADPH, which was confirmed through hydrogen bond affinities for the respective amino acids. However,  $H_2O_2$  cannot be consider as having sites to which lawsone and THN can efficiently bond.

## 5. Conclusions

The examination of naphthoquinone derivatives of lawsone which can be metabolize into 1,2,4-trihydroxy naphthalene by a catalast DTD. In previous experimental results showed the naphthoquinone derivatives are ability to induce oxidative damages as consequence of their ability to undergo redox cycling and generation of reactive oxygen species, this phenomenon is considered to be of non toxicological concern of lawsone and its metabolite 1,2,4-trihydroxynaphthalene. Lawsone cannot generate reactive oxygen species at a rate sufficient to exceed the capacity of the cells to remove them, and hence no toxicity results. In support of previous study was proved that lawsone itself almost does not show the involvement of hydrogen perox-

ide generations as it is non redox cycling compound because of stabilizing influence of its 2-hydroxy group. This observation has led to the hypothesis that lawsone and 1,2,4-trihydroxy naphthalene were identical.

## Acknowledgements

The authors gratefully acknowledged the authority of Jdavpur University for providing the necessary facilities. We also give hearty thanks to Mr. C. S. Tamizhanban for his guidance for the operation of the AutoDock software.

## Conflict of interest

The authors declare that there are no conflict of interest.

## References

1. Penney DP, Powers JM, Frank M, Willis C, Churukian C. Analysis and testing of biological stains - the biological stain commission procedures. *Biotech Histochem.* 2002;77(5-6):237-75.
2. Singh M, Jindal SK, Kavia ZD, Jangid BL, Khem Chand. Traditional methods of cultivation and processing of henna. henna, cultivation, improvement and trade. India: Central Arid Zone Research Institute, Jodhpur. 2005. p. 21-4.
3. The scientific committee on cosmetic products and non-food products intended for consumers [internet]. London: European Public Spaces; 2004. Available from: [http://ec.europa.eu/health/archive/ph\\_risk/committees/sccp/documents/out254\\_en.pdf](http://ec.europa.eu/health/archive/ph_risk/committees/sccp/documents/out254_en.pdf).
4. Munday R, Smith BL, Fowke EA. Haemolytic activity and nephrotoxicity of 2-hydroxy-1,4-naphthoquinone in rats. *J Appl Toxicol.* 1991;11(2):85-90.
5. Kirkland D, Marzin D. An assessment of the genotoxicity of 2-hydroxy-1,4 naphthoquinone, the natural dye ingredient of henna. *Mutat Res.* 2003;537(2):183-99.
6. Biological macromolecular resource [internet]. USA: Protein data bank; 2014 [February 2014]. Available from: <http://www.rcsb.org/pdb/home/home.do>.
7. Gupta D, Bleakley B, Gupta RK. Dragon's blood: botany, chemistry and therapeutic uses. *J Ethnopharmacol.* 2008;115(3):361-80.
8. Holstege CP, Mitchell K, Barlotta K, Furbee RB. Toxicity and drug interactions associated with herbal products: ephedra and St. John's Wort. *Med Clin North Am.* 2005;89(6):1225-57.
9. Venkataramanan R, Komoroski B, Strom S. *In vitro* and *in vivo* assessment of herb drug interactions. *Life Sci.* 2006;78(18):2105-15.
10. Jordan SA, Cunningham DG, Marles RJ. Assessment of herbal medicinal products: challenges, and opportunities to increase the knowledge base for safety assessment. *Toxic Appl Pharmacol.* 2010;243(2):198-216.
11. Vanherweghem JL, Depierreux M, Tielemans C, Abramowicz D, Dratwa M, Jadoul M, *et al.* Rapid pro-

- gressive interstitial renal fibrosis in young women: association with slimming regimen including Chinese herbs. *Lancet*.1993;341(8842):387-91.
12. Debelle FD, Nortier JL, De Prez EG, Garbar CH, Vienne AR, Salmon IJ, *et al*. Aristolochic acids induce chronic renal failure with interstitial fibrosis in salt-depleted rats. *J Am Soc Nephrol*. 2002;13(2):431-6.
  13. Baliga MS, Jagetia GC, Ulloor JN, Baliga MP, Venkatesh P, Reddy R, *et al*. The evaluation of the acute toxicity and long term safety of hydroalcoholic extract of *Sapthaparna* (*alstoniascholaris*) in mice and rats. *Toxicol Lett*. 2004;151(2):317-26.
  14. Calculation of molecular properties and bioactivity score [internet]. Slovak Republic: Molinspiration; 2014 [11 May 2014]. Available from: <http://www.molinspiration.com/cgi-bin/properties>.
  15. Souse SF, Fernandes PA, Ramos MJ. Protein-ligand docking: current status and future challenges. *Proteins*. 2006;65(1):15-26.
  16. Hu X, Shelver WH. Docking studies of matrix metalloproteinase inhibitors: zinc parameters optimization to improve the binding free energy prediction. *J Mol Graph Model*. 2003;22(2):115-26.
  17. Kubinyi H. Structure-based design of enzyme inhibitors and receptor ligands. *Curr Opin Drug Discov Devel*. 1998;1(1):4-15.
  18. Cadenas E. Basic mechanisms of antioxidant activity. *Biofactors*. 1997;6(4):391-7.