



*Analytical Letters*, 41: 2844–2859, 2008  
Copyright © Taylor & Francis Group, LLC  
ISSN: 0003-2719 print/1532-236X online  
DOI: 10.1080/00032710802421780



## SENSORS

# Preparation of PbS Nanoparticles by Phase-Transfer Method and Application to Pb<sup>2+</sup>-Selective Electrode Based on PVC Membrane

Weihong Song, Chunhui Wu, Hongzong Yin, Xiaoyan Liu,  
Panpan Sa, and Jinyang Hu

College of Chemistry and Material Science, Shandong Agricultural  
University, Shandong, P. R. China

**Abstract:** A novel approach to prepare homogeneous PbS nanoparticles by phase-transfer method was developed. The preparatory conditions were studied in detail, and the nanoparticles were characterized by transmission electron microscopy (TEM) and UV-vis spectroscopy. Then a novel lead ion-selective electrode of polyvinyl chloride (PVC) membrane based on these lead sulfide nanoparticles was prepared, and the optimum ratio of components in the membrane was determined. The results indicated that the sensor exhibited a wide concentration range of  $1.0 \times 10^{-5}$  to  $1.0 \times 10^{-2}$  mol·L<sup>-1</sup>. The response time of the electrode was about 10 s, and the optimal pH in which the electrode could be used was from 3.0 to 7.0. Selectivity coefficients indicated that the electrode was selective to the primary ion over the interfering ion. The electrode can be used for at least 3 months without any divergence in potential. It was successfully applied to directly determine lead ions in solution and used as an indicator electrode in potentiometric titration of lead ions with EDTA.

Received 12 July 2008; accepted 29 July 2008.

The authors are thankful to the Natural Science Foundation of Shandong Province for its financial support (No. J06I05).

Address correspondence to Hongzong Yin, College of Chemistry and Material Science, Shandong Agricultural University, 271018, Shandong, P. R. China. Tel.: +86 538 8249248. Fax: +86 538 8242251. E-mail: hzyin@sdau.edu.cn

**Keywords:** Ion-selective electrode, lead sensors, PbS nanoparticles, phase-transfer method, PVC membrane

## INTRODUCTION

Lead is ubiquitous in the environment. In recent years, because of the increasing use of lead and its serious hazardous effect to human health, much effort has been placed on the development of ion-selective electrodes (ISEs) for detecting of lead ions. Most of ISEs are polyvinyl chloride (PVC) membrane electrodes. Their dynamic response is generated by dispersing different active material as an ion carrier in a PVC matrix.

A number of diverse ligands, viz., *N'*-dibenzyl-1,4,10,13-tetraoxa-7,16-diazacyclooctadecane (Gupta, Jain, and Kumar 2006), *N,N'*-bis(salicylidene)-2,6-pyridinediamine (Jeong et al. 2005), *meso*-tetrakis-(2-hydroxy-1-naphthyl) porphyrin (Ardakany 2004), capric acid (Mousavi, Barzegar and Sahari 2004), benzyl disulphide (Abbaspour and Tavakol 1999), 5,5'-dithiobis-(2-nitrobenzoic acid) (Rouhollahi, Ganjali, and Shamsipur 1998), tetrabenzyl pyrophosphate (Xu and Katsu 2000), 9,10-anthraquinone derivative (Tavakkoli 1998), and 3,4,4a,5-tetrahydro-3-methylpyrimido-[1,6-a] benzimidazole-1(2H) thione (Jain, Sondhi, and Rajvanshi 2003) were used to prepare Pb<sup>2+</sup> sensors. Besides these, crown ethers and calixarenes were also widely investigated as sensing materials, including benzo-15-crown-5 (Sheen and Shih 1992), diaza-crown ether (Yang et al. 1997), 18-crown-6 (Zareh, Ghoneom, and El-Aziz 2001), *N,N'*-dimethylcyanodiaza-18-crown-6 (Ganjali 2002), *sym*-dibenzo-16-crown-5 ethers (Su, Chang, and Liu 2001), 4'-vinylbenzo-15-crown-5 homopolymer (Ganjali et al. 1998), lariat crown ethers (Hasse 2001), 1,10-dibenzyl-1,10-diaza-18-crown-6 (Mousavi 2000), thia-crown ether (Shamsipur, Ganjali, and Rouhollahi 2001), calix[*n*] arene phosphine oxide derivatives (Cadogan 1999), di- and tetrathioamide calyx[4]arene (Malinowska 1994), thiophosphorylated calyx[6]arene (Wroblewski 1996), 4-*tert*-butylcalix[6]arene (Bhat, Ijeri, and Srivastava 2004), calixarene carboxyphenyl azo derivative (Lu, Chen, and He 2002), 2,12-dimethyl-7,17-diphenyltetrapyrazole and 5,11-dibromo-25,27-dipropoxy-calix[4]arene (Jain et al. 2006), and 4-*tert*-butylcalix[4]arene (Gupta, Mangla, and Agarwal 2002). In addition, nanoparticles used as ionophores have ever been reported, such as nanosized PbO powders (Li et al. 2005). However, a lead ion-selective electrode based on homogeneously nanosized PbS particles has never been reported.

In this work, a novel approach to prepare homogeneous PbS nanoparticles by a phase-transfer method is first described, followed by characterization of the nanoparticles TEM and UV-vis spectra. Performances

of lead ion-selective PVC electrode based on PbS nanoparticles prepared were also studied. The results, reported in the present communication, showed that this sensor based on PbS nanoparticles exhibited good sensitivity and selectivity toward lead ions and could therefore be used as a selective sensor for its quantification.

## EXPERIMENTAL

### Reagents

High-molecular-weight polyvinylchloride (PVC) and dioctylphthalate (DOP) were obtained from Aldrich. Analytical reagent-grade tetrahydrofuran (THF), nitric acid, and sodium hydroxide were obtained from Shanghai Chemical Reagent Corporation. Solutions of metal (nitrates) were prepared in doubly distilled water and standardized by the reported methods wherever necessary. Working solutions of different concentrations were prepared by diluting  $0.1 \text{ mol}\cdot\text{L}^{-1}$  stock solutions.

### Apparatus

The microstructure and morphology of the nanoparticles were characterized by TEM (model 800, Hitachi) and UV-vis spectrophotometry (model UV-1601PC, Shimadzu), respectively. The potential measurements were carried out with a digital pH meter (model pHs-3D).

### Preparation of PbS Nanoparticles

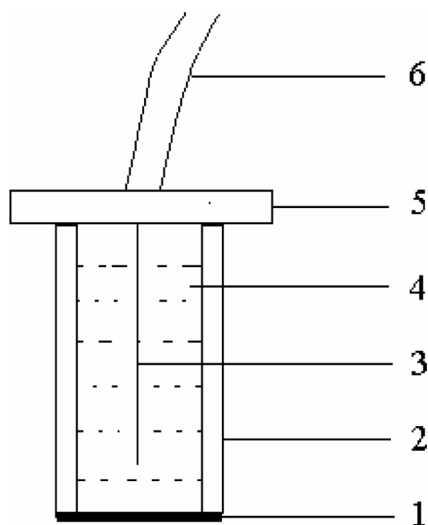
A 60-mL portion of  $1 \times 10^{-4} \text{ mol}\cdot\text{L}^{-1}$  lead acetate was placed in a beaker and adjusted to pH 6.0 with  $1 \text{ mol}\cdot\text{L}^{-1}$  sodium hydroxide under continuous stirring. The solution was then transferred to a 150-mL separatory funnel. Then 60 mL of  $1.5 \times 10^{-4} \text{ mol}\cdot\text{L}^{-1}$   $\text{H}_2 \text{ Dz}/\text{CCl}_4$  solution was added, and the mixed solution was oscillated thoroughly for 20 min. The color of the organic phase changed from deep green to pink, proving that lead ions were transferred from water phase to the organic phase by extraction. The two phases were stratified thoroughly after 2 h, and the transparent organic phase was transferred to an Erlenmeyer flask. Then 60 mL of  $1 \times 10^{-4} \text{ mol}\cdot\text{L}^{-1}$   $\text{CH}_3\text{CSNH}_2/\text{CH}_3\text{CH}_2\text{OH}$  solution was added slowly in a dropwise fashion into the flask under vigorous stirring, while the dropping speed was controlled to about 10 drops per minute. The mixed solution was stirring for 12 h at room temperature, and then the PbS nanoparticles formed in the solution.

### Preparation of Nano-PbS-PVC Membranes

An amount of 0.1000 g of PVC powder was put into a 100-mL beaker and dissolved in 10 mL of THF. Then 0.1000 g of DOP was added and mixed homogeneously. Then the solution was put into a Petri dish (90 mm in diameter and 18 mm in height). Fifty mL of solution containing PbS nanoparticles was also added. The resulting solution was left overnight at room temperature for evaporation of the organic solvent. A transparent membrane of about 0.2 mm in thickness was obtained.

### Preparation of PbS-PVC Membrane Electrode

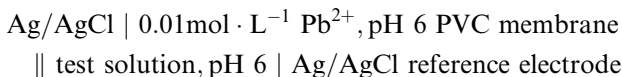
A 100-mm PVC tube (10 mm in diameter) was used as electrode body. An 80-mm Ag/AgCl wire was fixed in the tube and acted as an internal reference electrode. Then a disk of about 12 mm diameter was cut from the obtained membrane. The disk was glued to the polished end of a PVC tube by THF. The tube was then filled with internal solution [ $0.01 \text{ mol}\cdot\text{L}^{-1} \text{ Pb}(\text{NO}_3)_2$ ]. The structure of PbS-PVC membrane electrode is shown in Fig. 1. The electrode was finally equilibrated for 24 h in a  $1 \times 10^{-7} \text{ mol}\cdot\text{L}^{-1} \text{ Pb}^{2+}$  solution for performance measurements.



**Figure 1.** Structure of PbS-PVC membrane electrode: 1, sensitivity membrane; 2, PVC tube; 3, Ag/AgCl coated wire internal reference electrode; 4, internal solution; 5, electrode base; and 6, electrode wire.

## Potential Measurements

A cell assembly of the following type was used:



The electrodes were immersed directly in the test solution at  $25 \pm 0.2^\circ\text{C}$ . The electric potential of lead acetate standard solutions (with concentrations from  $1 \times 10^{-7}$  to  $1 \times 10^{-1} \text{ mol} \cdot \text{L}^{-1}$ ) were measured by a PHS-3D potentiometer.

All pH adjustments were made with diluted solutions of  $\text{HNO}_3$  or  $\text{NaOH}$ .

## RESULTS AND DISCUSSION

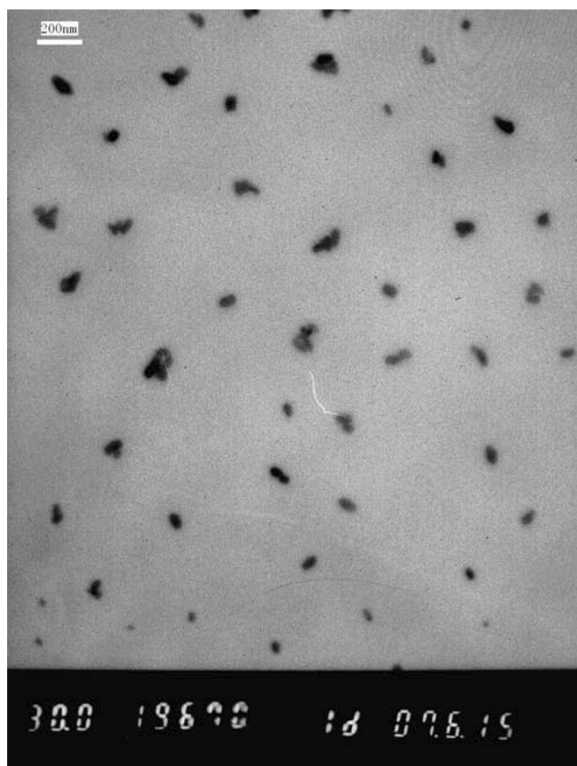
### Characterization of Prepared PbS Nanoparticles

TEM has been used rather extensively to measure the nanoparticle size in a direct and visual manner. Figure 2 shows the TEM micrographs of PbS nanoparticles. The majority of the particles' sizes fall into the range of 40 to 60 nm in diameter. It is noted that most of the particles have compact spherical structures with proportional size distribution. Although some portion aggregates during the sample preparation, the overall distribution is still very well. The nanoparticles can be stored from 3 to 5 days at room temperature without any obvious aggregation.

Nanosized particles generally exhibit threshold energy in the optical absorption measurements because of the size-specific band gap structures (Wroblewski et al. 1996; Bhat, Ijeri, and Srivastava 2004; Lu, Chen, and He 2002; Jain et al. 2006), which is reflected by the blue shifting of the absorption edge (from near-infrared to visible) with decreasing particle size (Chen, Templeton, and Murray 2000; Steigerwald and Brus 1990; Weller 1993; Zhang 1997; Borrelli and Smith 1994; Fendler 1987. From the optical spectra of PbS nanoparticles (Fig. 3), it is seen that the  $\text{H}_2\text{D}_z/\text{CCl}_4$  solution and  $\text{Pb}^{2+}-\text{H}_2\text{D}_z/\text{CCl}_4$  solution showed rather large absorption band at 629 nm and 517 nm, respectively. Otherwise, the PbS nanoparticles showed a broad but not strong peak at 437 nm and obvious blue shifting, which confirmed the production and remarkable quantum effect of PbS nanoparticles.

### The Influencing Factors of Nano-PbS Preparation

The concentration of lead ions was a key factor to the prepared PbS-nanoparticles. If the solution contained a high concentration of  $\text{Pb}^{2+}$

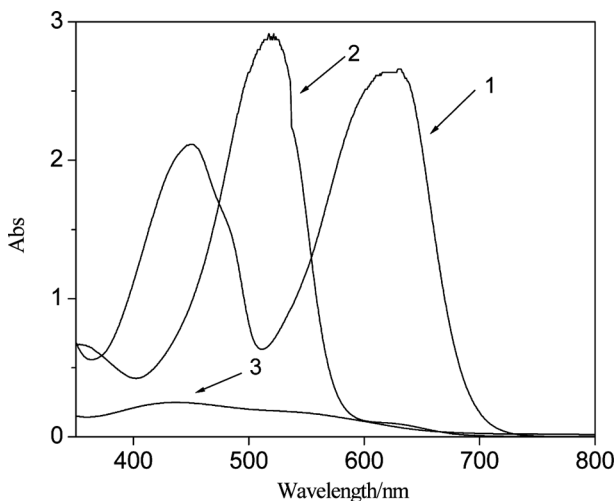


*Figure 2.* TEM image of PbS nanoparticles.

ions, the reaction speed with sulfide ions was too fast to distribute in time, resulting in that PbS nanoparticles that easily aggregated. In contrast, if the concentration of  $\text{Pb}^{2+}$  ions solution was low, the resulting PbS particles would be small. The response of nano-PbS-PVC membrane electrodes had poor performances. Therefore,  $1 \times 10^{-4} \text{ mol}\cdot\text{L}^{-1}$  lead ion was adopted.

The influence of the acidity on concentration of  $\text{Pb}^{2+}$  after 20 min of extraction was investigated. The UV-vis spectrum of  $\text{Pb}^{2+}-\text{H}_2\text{D}_z/\text{CCl}_4$  solution was shown in Fig. 4a. The results showed that the  $\text{H}_2\text{D}_z$  could extract  $\text{Pb}^{2+}$  from the water phase to the  $\text{CCl}_4$  organic phase in pH 4 to 10. The maximum intensity of absorption at 517 nm is shown in Fig. 4b. The optimal pH value was 6. The solution of PbS nanoparticles prepared at this pH had good stability and could be stored for a long time.

The influence of the ratio between  $\text{H}_2\text{D}_z$  and  $\text{CCl}_4$  was also investigated, as illustrated in Fig. 5. The optimal ratio was 1:1.5. Considering



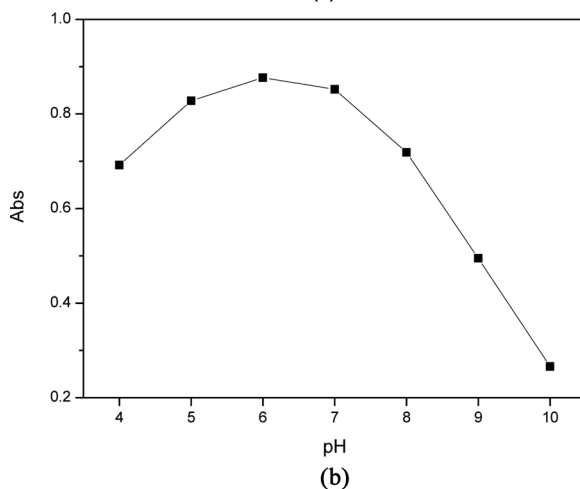
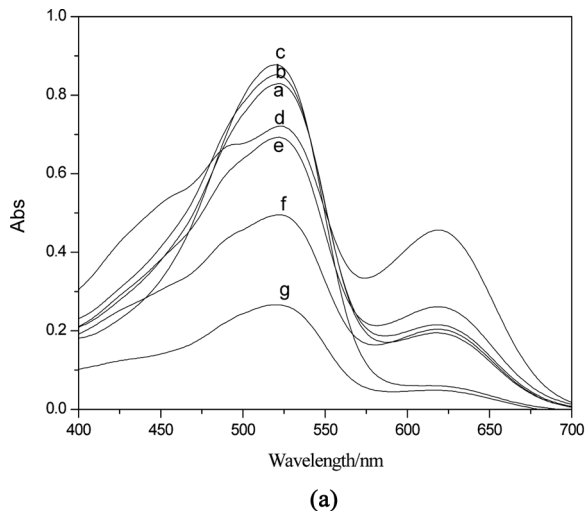
**Figure 3.** UV-vis spectrum of PbS nanoparticles: 1,  $\text{H}_2\text{D}_z/\text{CCl}_4$ ; 2,  $\text{Pb}^{2+}-\text{H}_2\text{D}_z/\text{CCl}_4$ ; 3, PbS nanoparticles.

the solubility of  $\text{H}_2\text{D}_z$  in  $\text{CCl}_4$  and the concentration of  $\text{Pb}^{2+}$  ions,  $1.5 \times 10^{-4} \text{ mol}\cdot\text{L}^{-1}$   $\text{H}_2\text{D}_z/\text{CCl}_4$  solution was used.

Three methods were used to obtain sulfide ions:  $\text{Na}_2\text{S}/\text{H}_2\text{O}$  solution,  $\text{CH}_3\text{CSNH}_2/\text{H}_2\text{O}$  solution, and  $\text{CH}_3\text{CSNH}_2/\text{CH}_3\text{CH}_2\text{OH}$  solution. When the  $\text{Pb}^{2+}-\text{H}_2\text{D}_z/\text{CCl}_4$  solution was mixed with  $\text{Na}_2\text{S}/\text{H}_2\text{O}$  or  $\text{CH}_3\text{CSNH}_2/\text{H}_2\text{O}$  solution, two phases were formed. The reaction only took place at the interface. The sulfide ions in water were so bulky that plenty of large PbS particles were produced. Otherwise, the  $\text{CH}_3\text{CSNH}_2/\text{CH}_3\text{CH}_2\text{OH}$  solution could be mixed thoroughly with  $\text{Pb}(\square)-\text{H}_2\text{D}_z/\text{CCl}_4$  solution. The reaction, therefore, occurred in the homogeneous phase. Furthermore, the speed of sulfide ions released from thioacetamide in anhydrous ethanol was not fast, and thus homogeneous PbS nanoparticles could be obtained. The TEM images showed that these nanoparticles had small diameters and well-proportioned size distribution. The optimal concentration of thioacetamide in anhydrous ethanol was  $1.0 \times 10^{-4} \text{ mol}\cdot\text{L}^{-1}$  from the experimental results.

### The Composition of Membrane Electrode

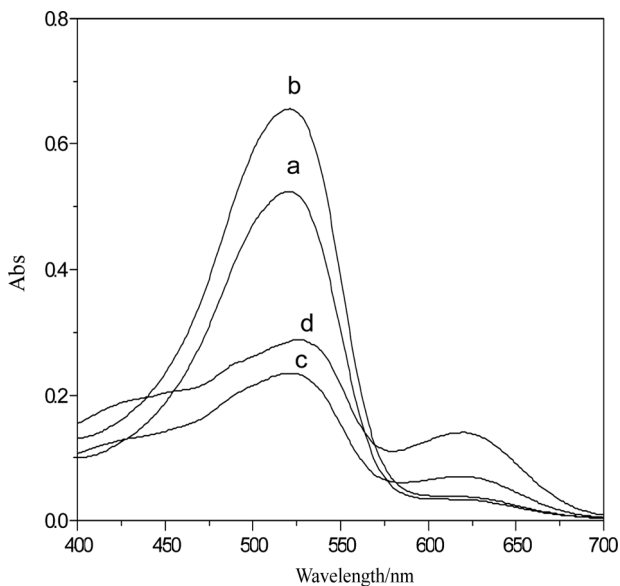
Membrane composition was investigated to evaluate the performance of the lead ion-selective electrode based on nano-PbS-PVC membrane. The DOP was a plasticizer that could increase the membrane flexibility.



**Figure 4.** Variation of UV-vis spectrum with different acidity of  $\text{Pb}^{2+}$  ion solution: a = 4; b = 5; c = 6; d = 7; e = 8; f = 9; and g = 10.

Without DOP, the membrane would turn hard and fragile. As a result, the electrode had no response signal and lead ion. With too much DOP, the membrane would be viscous and its mechanical intensity would decrease. When the mass of PVC powder to DOP was 0.1000 g respectively, a 0.2-mm-thick membrane was formed after THF evaporated. The membrane had appropriate thickness, good flexibility, and high mechanical intensity. It was found that the thickness of 0.2 mm was





**Figure 5.** Influence of the ratio between  $\text{H}_2\text{D}_z$  and  $\text{CCl}_4$ : a = 1:1; b = 1:1.5; c = 1:2; and d = 1:2.5.

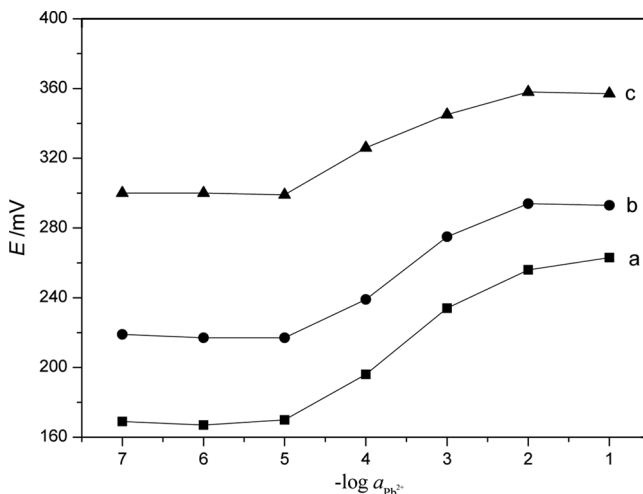
optimal through the experiments. The performance of the ion-selective electrode developed was excellent.

### Effect of Internal Solution

In accord with the responses of the generally adopted ion sensor, the internal solution could affect the sensor response when the membrane internal diffusion potential was appreciable. Thus, the effect of activity of the internal solution on the functioning of the membrane sensors was studied by measuring the potentials at varying activity of internal solution, viz.  $1.0 \times 10^{-2}$ ,  $5.0 \times 10^{-2}$ , and  $1.0 \times 10^{-1} \text{ mol}\cdot\text{L}^{-1} \text{ Pb}^{2+}$  (Fig. 6). Best results in terms of slope and working concentration range were obtained with internal solution of activity  $1.0 \times 10^{-2} \text{ mol}\cdot\text{L}^{-1}$ . Thus, the activity of the internal solution was kept at  $1.0 \times 10^{-2} \text{ mol}\cdot\text{L}^{-1}$  in all studies.

### The Influence of the Content of PbS Nanoparticles

As an active component in the membrane, nano-PbS directly affected the electrode performance in a dose-dependent manner. Various volumes of



**Figure 6.** Influence of the potential response of  $\text{Pb}^{2+}$  selective electrode with different internal filling solution: a,  $1 \times 10^{-2} \text{ mol} \cdot \text{L}^{-1}$ ; b,  $5 \times 10^{-2} \text{ mol} \cdot \text{L}^{-1}$ ; and c,  $1 \times 10^{-1} \text{ mol} \cdot \text{L}^{-1}$ .

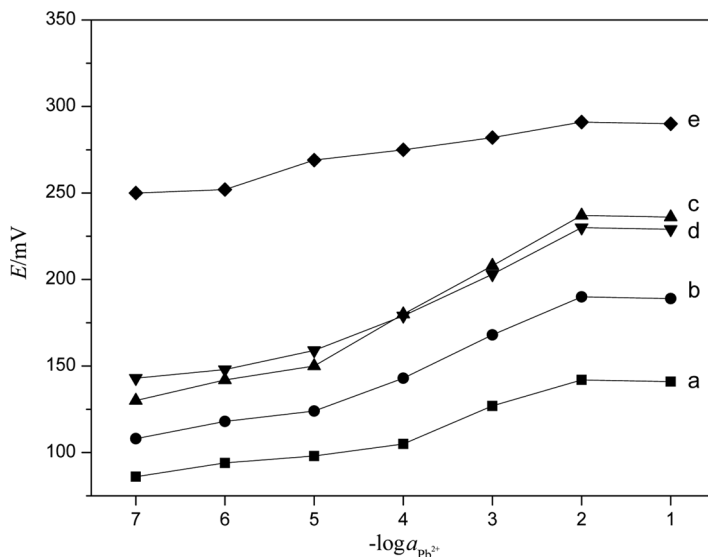
PbS nanoparticles, viz. 10, 20, 30, 40, 50, and 60 mL of solution containing PbS nanoparticles, were added to prepare six membranes. The performances of those electrodes were tested in a series of lead ion standard solutions from  $1.0 \times 10^{-7}$  to  $1.0 \times 10^{-1} \text{ mol} \cdot \text{L}^{-1}$ . It was seen from Fig. 7 that the electrode made of membrane containing 30 or 40 mL of PbS nanoparticle solution had better performance.

### pH Effect of Test Solution

With 40 mL of PbS nanoparticles as ionophores and DOP as a plasticizer, the response of  $\text{Pb}^{2+}$  selective electrode affected by pH was studied (Fig. 8). The pH value of  $10^{-3} \text{ mol} \cdot \text{L}^{-1}$   $\text{Pb}(\text{NO}_3)_2$  test solutions was adjusted with  $\text{HNO}_3$  and  $\text{NaOH}$ . As illustrated in Fig. 8, the potentials remained constant when the pH value was kept from 3.0 to 7.0. Outside this range, the electrode response changed drastically. This was probably due to lead hydroxide formation and response of the electrode to hydrogen ions at low pH values.

### Response Time and Lifetime

The response time of the electrodes was found to be approximately 10 s when the electrodes were directly immersed in  $10^{-3}$  or  $10^{-4} \text{ mol} \cdot \text{L}^{-1}$



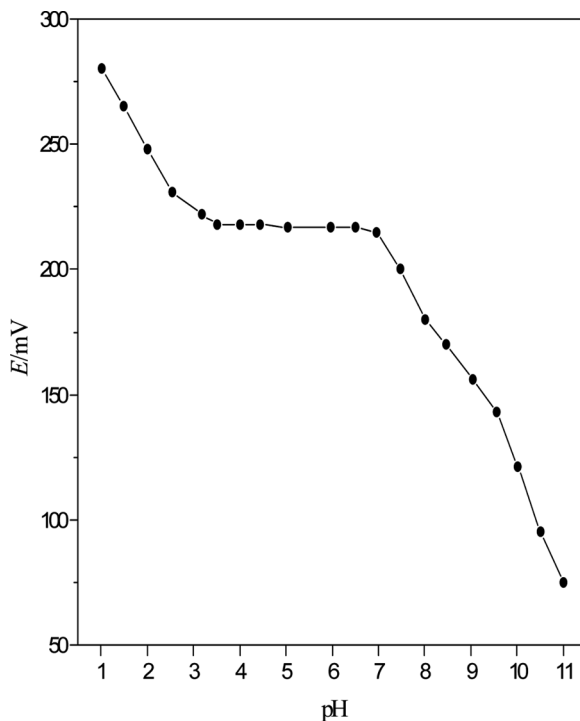
**Figure 7.** Variation of the potential of PVC membrane with different volume of PbS nanoparticles: a, 10 mL; b, 20 mL; c, 30 mL; d, 40 mL; and e, 50 mL.

solution; the response times of the membrane electrodes were 6 and 8 s, respectively. Even if the concentration of  $\text{Pb}^{2+}$  ions was  $10^{-5} \text{ mol}\cdot\text{L}^{-1}$ , the response time would also be stable within 15 s.

The lifetime of the electrodes was determined by recording its potential at an optimum pH value and plotting its calibration curve each day. The parameters, such as the slope, working range, and response time of the electrode, were found to be reproducible. Also, the membrane could be used over a period of 3 months without observing any significant drift in the parameters. After this period, a slight deviation was observed in response time and slope, which could be corrected by re-equilibrating the membrane with  $1.0 \times 10^{-7} \text{ mol}\cdot\text{L}^{-1}$  lead ion solution for 2–3 days. With this treatment, the assembly could be used over a period of about 1 more month and then it was replaced by a fresh membrane.

### Potentiometric Selectivity

The modified fixed interference method as suggested by Viteri and Diamond (1994) was used with  $1.0 \times 10^{-2} \text{ mol}\cdot\text{L}^{-1}$  interfering ions to determine selectivity coefficients of the proposed sensor. Selectivity parameter data for various ions are presented in Fig. 9 and Table 1. A value of

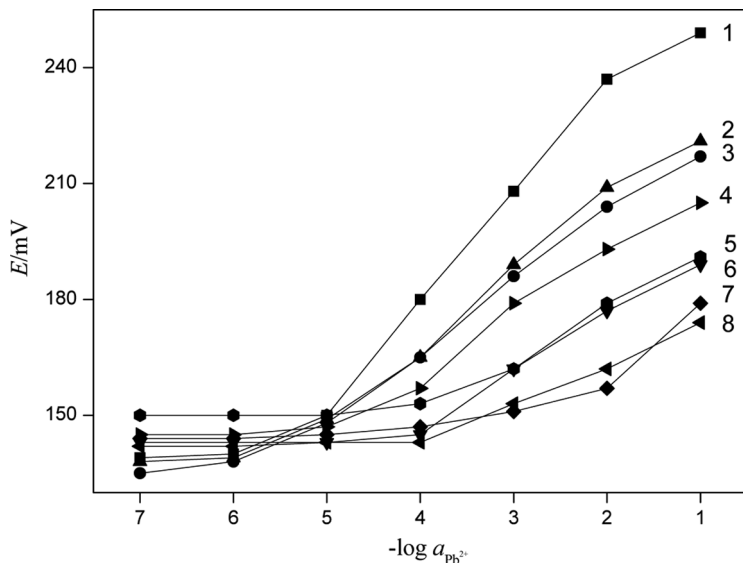


**Figure 8.** Effect of pH on cell potential of sensors at  $\text{Pb}^{2+}$  activity of  $1.0 \times 10^{-3} \text{ mol} \cdot \text{L}^{-1}$ .

selectivity coefficient less than 1 indicates that the electrode was selective to the primary ion over the interfering ion. However, it was important to mention that the smaller value of selectivity coefficient was, the higher selectivity of the electrode. In this respect, the selectivity coefficients for  $\text{K}^+$  and  $\text{Na}^+$  are not very small. Although the sensor is selective even over these two ions, the order of selectivity is not very high. It suggested that lower concentrations of  $\text{K}^+$  and  $\text{Na}^+$  would not cause interference, but higher levels would cause interference.

## ANALYTICAL APPLICATIONS

The analytical application of the electrode was investigated as an indicator electrode in the potentiometric estimation of  $\text{Pb}^{2+}$  solution by titrating 25 mL of  $1.0 \times 10^{-4} \text{ mol} \cdot \text{L}^{-1}$   $\text{Pb}(\text{NO}_3)_2$  against  $1.0 \times 10^{-3} \text{ mol} \cdot \text{L}^{-1}$  EDTA solution. The pH of the solution was maintained at 6.0

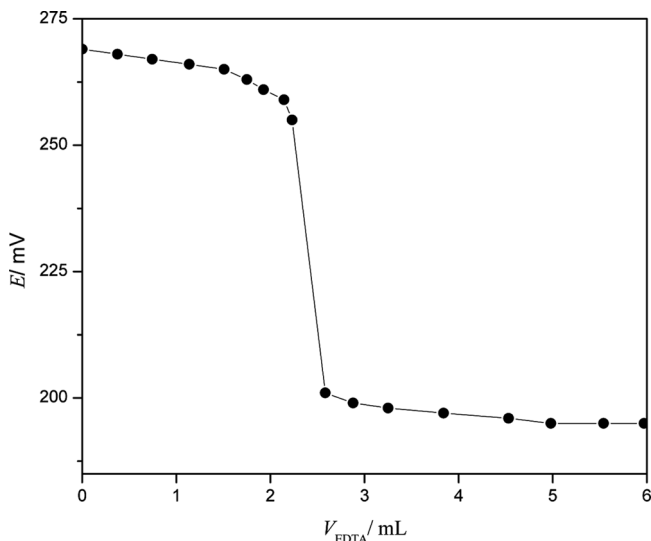


**Figure 9.** The response to some cations of  $\text{Pb}^{2+}$  selective electrode based on PbS nanoparticles: 1,  $\text{Pb}^{2+}$ ; 2,  $\text{Na}^+$ ; 3,  $\text{K}^+$ ; 4,  $\text{Ca}^{2+}$ ; 5,  $\text{Ba}^{2+}$ ; 6,  $\text{Cu}^{2+}$ ; 7,  $\text{Al}^{3+}$ ; and 8,  $\text{Ni}^{2+}$ .

throughout the titration with  $\text{HNO}_3$  and  $\text{NaOH}$ . The titration plot does not have a standard sigmoid shape (Fig. 10), which may be due to some interference caused by  $\text{Na}^+$  ions of the disodium EDTA salt (Gupta and Kumar 1999; Gupta et al. 1999). However, the sharp breakpoint corresponded to the stoichiometry of  $\text{Pb}^{2+}$ -EDTA complex show the efficacy of the proposed electrode in the potentiometric estimation of  $\text{Pb(II)}$ .

**Table 1.** Selectivity coefficients ( $K_{\text{Pb}^{2+},j}^{\text{pot}}$ ) obtained in the presence of various interfering ions for the lead electrode

Interfering ion	$K_{\text{Pb}^{2+},j}^{\text{pot}}$
$\text{K}^+$	$7.2 \times 10^{-1}$
$\text{Na}^+$	$6.7 \times 10^{-1}$
$\text{Cu}^{2+}$	$9.94 \times 10^{-2}$
$\text{Ca}^{2+}$	$1.25 \times 10^{-2}$
$\text{Ba}^{2+}$	$1.31 \times 10^{-2}$
$\text{Ni}^{2+}$	$1.17 \times 10^{-2}$
$\text{Al}^{3+}$	$5.25 \times 10^{-3}$



**Figure 10.** Potentiometric titration plot of  $1.0 \times 10^{-4} \text{ mol} \cdot \text{L}^{-1} \text{ Pb}^{2+}$  solution (25 mL) with  $1.0 \times 10^{-3} \text{ mol} \cdot \text{L}^{-1}$  EDTA solution.

## CONCLUSIONS

In this work, homogeneous lead sulfide nanoparticles were successfully prepared by the phase-transfer method. TEM and UV-vis spectroscopy showed that PbS nanoparticles had good spherical structure with proportional size distribution, which could be used as ion carriers in the development of lead ion-selective electrode. The sensor prepared by PbS nanoparticles exhibited good reproducibility and fast response time and could be employed for more than 3 months. It could also be used as an indicator electrode in the potentiometric titration of lead ions with EDTA. Otherwise, the results of potentiometric selectivity indicated that most of metal ions would not affect the selectivity of the lead electrode seriously. Therefore, the proposed sensor is a good addition to the existing list of the lead ion-selective sensors reported and can be used for real sample analysis.

## REFERENCES

- Abbaspour, A. and Tavakol, F. 1999. Lead-selective electrode by using benzyl disulphide as ionophore. *Anal. Chim. Acta*, 378: 145–149.
- Ardakany, M.M., Ensafi, A.A., Naeimi, H., Dastanpour, A., Shamli, A., Lee, H.K., Song, K., Seo, H.R., Choi, Y.-K., and Jeon, S. 2004. Lead(II)-selective

- electrodes based on tetrakis(2-hydroxy-1-naphthyl)porphyrins: The effect of atropisomers. *Sens. Actuators B*, 99: 323–329.
- Bhat, V.S., Ijeri, V.S., and Srivastava, A.K. 2004. Coated wire lead(II) selective potentiometric sensor based on 4-tert-butylcalix[6]arene. *Sens. Actuators B*, 99: 98–105.
- Borrelli, N.F. and Smith, D.W. 1994. Quantum confinement of PbS microcrystals in glass. *J. Non-Cryst. Solids*, 180: 25–31.
- Cadogan, F., Kane, P., McKervey, M.A., and Diamond, D. 1999. Lead-selective electrodes based on calixarene phosphine oxide derivatives. *Anal. Chem.*, 71: 5544–5550.
- Chen, S., Templeton, A.C., and Murray, R.W. 2000. Monolayer-protected cluster growth dynamics. *Langmuir*, 16: 3543–3548.
- Fendler, J.H. 1987. Atomic and molecular clusters in membrane mimetic chemistry. *Chem. Rev.*, 87: 877–899.
- Ganjali, M.R., Hosseini, M., Basiripour, F., Javanbakht, M., Hashemi, O.R., Rastegar, M.F., Shamsipur, M., and Buchanan, G.W. 2002. Novel coated-graphite membrane sensor based on N,N'-dimethylcyanodiaza-18-crown-6 for the determination of ultra-trace amounts of lead. *Anal. Chim. Acta*, 464: 181–186.
- Ganjali, M.R., Rouhollahi, A., Mardan, A.R., Hamzeloo, M., Mogimi, A., and Shamsipur, M. 1998. Lead ion-selective electrode based on 4□-vinylbenzo-15-crown-5 homopolymer. *Microchem. J.*, 60: 122–153.
- Gupta, V.K., Jain, A.K., and Kumar, P. 2006. PVC-based membranes of N,N□-dibenzy-1,4,10,13-tetraoxa-7,16- diazacyclooctadecane as Pb(II)-selective sensor. *Sens. Actuators B*, 120: 259–265.
- Gupta, V.K., Khurana, U., Mangla, R., and Kumar, P. 1999. Determination of uranyl ions using poly(vinyl chloride) based 4-tert-butylcalix[6]arene membrane sensor. *Electroanalysis*, 11: 573–576.
- Gupta, V.K. and Kumar, P. 1999. Cadmium(II)-selective sensors based on dibenzo-24-crown-8 in PVC matrix. *Anal. Chim. Acta*, 389: 205–212.
- Gupta, V.K., Mangla, R., and Agarwal, S. 2002. Pb (II) selective potentiometric sensor based on 4-tert-butylcalix [4] arene in PVC matrix. *Electroanalysis*, 14: 1127–1132.
- Hasse, W., Ahlers, B., Reinbold, J., and Cammann, K. 2001. A PVC-based capric acid membrane potentiometric sensor for lead(II) ions. *Sens. Actuators B*, 73: 199–204.
- Jain, A.K., Gupta, V.K., Singh, L.P., and Raisoni, J.R. 2006. A comparative study of Pb<sup>2+</sup> selective sensors based on derivatized tetrapyrazole and calix[4]-arene receptors. *Electrochim. Acta*, 51: 2547–2553.
- Jain, A.K., Sondhi, S.M., and Rajvanshi, S. 2003. Pb(II) sensor based on membrane of 3,4,4a,5-tetrahydro-3-methylpyrimido[1,6-a] benzimidazole-1(2H) thione in PVC matrix. *Ind. J. Chem. Sec A.*, 42: 819–823.
- Jeong, T., Lee, H.K., Jeong, D.-C., and Jeon, S. 2005. A lead(II)-selective PVC membrane based on a schiff base complex of N,N'-bis(salicylidene)-2,6-pyridinediamine. *Talanta*, 65: 543–548.
- Li, S.Y., Yang, W., Chen, M., Gao, J.Z., Kang, J.W., and Qi, Y.L. 2005. Preparation of PbO nanoparticles by microwave irradiation and their application

- to Pb(II)-selective electrode based on cellulose acetate. *Mater. Chem. Phys.*, 90: 262–269.
- Lu, J., Chen, R., and He, X. 2002. A lead ion-selective electrode based on a calixarene carboxyphenyl azo derivative. *J. Electroanal. Chem.*, 528: 33–38.
- Malinowska, E., Brozozka, Z., Kasiura, K., Egberink, R.J., and Reinhoudt, D.N. 1994. Lead selective electrodes based on thioamide functionalized calix[4]arenes as ionophores. *Anal. Chim. Acta*, 298: 253–258.
- Mousavi, M.F., Barzegar, M.B., and Sahari, S. 2001. A PVC-based capric acid membrane potentiometric sensor for lead(II) ions. *Sens. Actuators B*, 73: 199–204.
- Mousavi, M.F., Sahari, S., Alizadeh, N., and Shamsipur, M. 2000. Lead ion-selective membrane electrode based on 1,10-dibenzyl-1,10-diaza-18-crown-6. *Anal. Chim. Acta*, 414: 189–194.
- Rouhollahi, A., Ganjali, M.R., and Shamsipur, M. 1998. Lead ion selective PVC membrane electrode based on 5,5'-dithiobis-(2-nitrobenzoic acid). *Talanta*, 46: 1341–1346.
- Sa'ez de Viteri, F.I. and Diamond, D. 1994. *Analyst*, 119: 749.
- Shamsipur, M., Ganjali, M.R., and Rouhollahi, A. 2001. Lead selective membrane potentiometric sensor based on a 18-membered thiacycrocrown derivative. *Anal. Sci.*, 17: 935–938.
- Sheen, S. and Shih, J. 1992. Lead (II) ion-selective electrodes based on crown ethers. *Analyst*, 117: 1691–1695.
- Steigerwald, M.L. and Brus, L.E. 1990. Semiconductor crystallites: A class of large molecules. *Acc. Chem. Res.*, 23: 183–188.
- Su, C.-C., Chang, M.-C., and Liu, L.K. 2001. New Ag<sup>+</sup> and Pb<sup>2+</sup>-selective electrodes with lariat crown ethers as ionophores. *Anal. Chim. Acta*, 432: 261–267.
- Tavakkoli, N., Khojasteh, Z., Sharghi, H., and Shamsipur, M. 1998. Lead ion-selective membrane electrodes based on some recently synthesized 9,10-anthraquinone derivatives. *Anal. Chim. Acta*, 360: 203–208.
- Weller, H. 1993. Quantized semiconductor particles: A novel state of matter for materials science. *Adv. Mater.*, 5: 88–95.
- Wroblewski, W., Brzozka, Z., Janssen, R.G., Verboom, W., and Reinhoudt, D.N. 1996. Lead versus cadmium selectivity of ion selective electrodes based on thiophosphorylated calix 6 arene ionophores. *New J. Chem.*, 20: 419–426.
- Xu, D. and Katsu, T. 2000. Tetrabenzyl pyrophosphate as a new class of neutral carrier responsive to lead ion. *Talanta*, 51: 365–371.
- Yang, X., Kumar, N., Chi, H., Hibbert, D.B., and Alexander, P.W. 1997. Lead-selective membrane electrodes based on dithiophenediazacrown ether derivatives. *Electroanalysis*, 9: 549–553.
- Zareh, M.M., Ghoneim, A.K., and El-Aziz, M.H.A. 2001. Effect of presence of 18-crown-6 on the response of 1-pyrrolidine dicarbodithioate-based lead selective electrode. *Talanta*, 54: 1049–1057.
- Zhang, J.Z. 1997. Ultrafast studies of electron dynamics in semiconductor and metal colloidal nanoparticles: Effects of size and surface. *Chem. Res.*, 30: 423–429.