

# Predicting survival in malignant pleural mesothelioma using routine clinical and laboratory characteristics

Samal Gunatilake,<sup>1</sup> David Lodge ,<sup>2</sup> Daniel Neville,<sup>2</sup> Thomas Jones,<sup>2</sup> Carole Fogg,<sup>2,3</sup> Paul Bassett,<sup>4</sup> Selina Begum,<sup>2</sup> Sumita Kerley,<sup>2</sup> Laura Marshall,<sup>2</sup> Sharon Glaysher,<sup>2</sup> Scott Elliott,<sup>2</sup> Rebecca Stores,<sup>3</sup> Lesley Bishop,<sup>5</sup> Anoop Chauhan<sup>2</sup>

**To cite:** Gunatilake S, Lodge D, Neville D, *et al*. Predicting survival in malignant pleural mesothelioma using routine clinical and laboratory characteristics. *BMJ Open Resp Res* 2021;**8**:e000506. doi:10.1136/bmjresp-2019-000506

Received 30 September 2019  
Revised 30 January 2020  
Accepted 6 February 2020



© Author(s) (or their employer(s)) 2021. Re-use permitted under CC BY-NC. No commercial re-use. See rights and permissions. Published by BMJ.

<sup>1</sup>Department of Respiratory Medicine, Hampshire Hospitals NHS Foundation Trust, Winchester, UK

<sup>2</sup>Department of Respiratory Research & Innovation, Portsmouth Hospitals NHS Trust, Portsmouth, UK

<sup>3</sup>Institute of Biological and Biomedical Sciences, University of Portsmouth, Portsmouth, UK

<sup>4</sup>Statsconsultancy Ltd, Amersham, UK

<sup>5</sup>Department of Respiratory Medicine, Queen Alexandra Hospital, Portsmouth, UK

**Correspondence to**  
Dr Samal Gunatilake;  
samal.gunatilake@hhft.nhs.uk

## ABSTRACT

**Introduction** The prognosis of malignant pleural mesothelioma (MPM) is poor, with a median survival of 8–12 months. The ability to predict prognosis in MPM would help clinicians to make informed decisions regarding treatment and identify appropriate research opportunities for patients. The aims of this study were to examine associations between clinical and pathological information gathered during routine care, and prognosis of patients with MPM, and to develop a 6-month mortality risk prediction model.

**Methods** A retrospective cohort study of patients diagnosed with MPM at Queen Alexandra Hospital, Portsmouth, UK between December 2009 and September 2013. Multivariate analysis was performed on routinely available histological, clinical and laboratory data to assess the association between different factors and 6-month survival, with significant associations used to create a model to predict the risk of death within 6 months of diagnosis with MPM.

**Results** 100 patients were included in the analysis. Variables significantly associated with patient survival in multivariate analysis were age (HR 1.31, 95% CI 1.09 to 1.56), smoking status (current smoker HR 3.42, 95% CI 1.11 to 4.20), chest pain (HR 2.14, 95% CI 1.23 to 3.72), weight loss (HR 2.13, 95% CI 1.18 to 3.72), platelet count (HR 1.05, 95% CI 1.00 to 1.10), urea (HR 2.73, 95% CI 1.31 to 5.69) and adjusted calcium (HR 1.47, 95% CI 1.10 to 1.94). The resulting risk model had a c-statistic value of 0.76. A Hosmer-Lemeshow test confirmed good calibration of the model against the original dataset.

**Conclusion** Risk of death at 6 months in patients with a confirmed diagnosis of MPM can be predicted using variables readily available in clinical practice. The risk prediction model we have developed may be used to influence treatment decisions in patients with MPM. Further validation of the model requires evaluation of its performance on a separate dataset.

## INTRODUCTION

Malignant pleural mesothelioma (MPM) is a rare cancer predominantly caused by asbestos which affects the pleura, a thin membrane of cells which lines the lungs and chest wall.<sup>1</sup>

## Key messages

### What is the key question?

- ▶ Is it possible to predict prognosis in patients with malignant pleural mesothelioma (MPM) using data collected routinely during patient care?

### What is the bottom line?

- ▶ In patients with a confirmed diagnosis of MPM, risk of death at 6 months can be predicted using variables readily available in clinical practice.

### Why read on?

- ▶ The risk prediction model we have developed could be used to influence treatment decisions in patients with MPM.

The prognosis of MPM is generally regarded as poor, with a median survival of between 8 and 12 months.<sup>2</sup> The UK currently has the highest death rate from MPM in the world,<sup>3</sup> with approximately 2500 deaths per year.<sup>4</sup> The ability to predict prognosis in MPM would help clinicians to make informed decisions regarding treatment, tailored to individual patients, such as early specialist palliative care.<sup>5</sup> Predicting prognosis also enables clinicians to identify appropriate research opportunities for patients.

There exists a large body of evidence examining prognostic factors in MPM including numerous clinical factors such as basic epidemiological variables, clinical condition, imaging assessments and tumour features.<sup>6–9</sup> Several prognostic scoring systems have been developed for MPM by combining prognostic variables, such as the European Organisation for Research and Treatment of Cancer<sup>6</sup> and Cancer and Leukaemia Group B<sup>7</sup> prognostic scoring systems, but these were derived from large series of patients from chemotherapy trials and may not reflect ‘real-world’ unselected patient cohorts. The LENT score is a

prognostic scoring system for patients with malignant pleural effusions including mesothelioma<sup>10</sup>; however, this system is not specific for predicting survival in MPM and may not be applicable to patients with MPM without evidence of an effusion. More recently, a clinical prediction model for prognosis in MPM has been developed using survival at 18 months as the dependent variable<sup>11</sup> using routinely available histological, clinical and laboratory information. However, since the median survival in patients with MPM is considered to be 8–12 months from diagnosis, identifying patients with an expected prognosis beyond 6 months would potentially be of greater value in guiding treatment decisions.

This study evaluated the Portsmouth city population, an area within close proximity of a dockyard with a historically large shipbuilding industry, where a significant amount of asbestos was used. As a result, the prevalence of asbestos-related respiratory disease including MPM among the local population is significantly greater than the UK average,<sup>12 13</sup> with approximately 30 to 40 new cases of MPM diagnosed each year in Portsmouth. Optimal prognostication is therefore of particular importance in order to respond to the needs of the local population. The aim of this study was to identify clinical and pathological characteristics gathered during routine care, including demographic and clinical information, to predict risk of death in an unselected group of patients with MPM. These data were then studied for an association with outcomes and used to develop a mortality risk prediction model.

## METHODS

This was a retrospective cohort study of 100 consecutive patients aged over 18 years diagnosed with MPM at Queen Alexandra Hospital, Portsmouth, UK between December 2009 and September 2013. Data were collated from a pre-existing database, originally designed to evaluate the clinical services and patient pathway provided by the MPM service at Portsmouth. Identifiable patient information from the original database was anonymised for the purposes of the study. The dataset was censored for survival on 31 October 2014.

The outcome variable was patient survival time, measured as the time from the date of MPM diagnosis to the date of death. Potential predictor variables were chosen following a review of current literature,<sup>6–9 13–17</sup> selected from data that are routinely available at the point of diagnosis including demographic characteristics and laboratory test results. These variables are listed in table 1. We did not adjust patient survival for treatment given the multitude of factors that influence treatment decisions, variation in treatment regimens and since the improvement in survival was thought to be modest.

## Statistical approach

A description of the study cohort for all potential risk factors was provided using mean and SD for continuous

**Table 1** Potential predictor variables for survival in patients diagnosed with malignant pleural mesothelioma in Portsmouth, UK

Group	Variable
Demographics	Age at diagnosis Gender
Clinical examination/ medical history	Weight Body mass index (BMI) Any known history of asbestos exposure Smoking status at diagnosis (never smoker, ex-smoker, current smoker) ECOG performance status (PS) at diagnosis (range 0–4) Diagnosed respiratory comorbidity Diagnosed non-respiratory comorbidity Total no of comorbidities
Symptoms at diagnosis	Dyspnoea Chest pain Cough Weight loss Loss of appetite Night sweats Fever
Pathology	Histological subtype Cytology—presence of malignant cells
Haematology	Haemoglobin (Hb) Red cell distribution and width (RDW) Platelet count (PLT)
Systemic inflammation	White blood cell count (WCC) Neutrophil lymphocyte ratio (NLR) C-Reactive protein (CRP)
Renal function	Urea Sodium (Na) Potassium (K) Creatinine
Liver function	Total protein Albumin Alkaline phosphatase (ALP)
Bone profile	Adjusted calcium Phosphate
Pleural fluid biochemistry	Total protein Lactate dehydrogenase (LDH)

variables with a normal distribution, median and IQR for continuous variables with a skewed distribution, and frequency and percentage for categorical variables. As some patients in the study were still alive at time of data collection, it was necessary to analyse the data using survival analysis methods including Kaplan-Meier plots. All analyses were performed using Cox regression.

**Table 2** Demographics of 100 consecutive patients diagnosed with malignant pleural mesothelioma in Portsmouth, UK between December 2009 and September 2013

Variable	Number of patients for whom data were available	Data summary
Age at diagnosis (years) (mean±SD)	100	73.2±7.8
Gender	100	
Male (n (%))		85 (85%)
Female (n (%))		15 (15%)
Weight (kg) (mean±SD)	70	74.8±16.8
BMI (kg/m <sup>2</sup> ) (mean±SD)	48	26.0±4.9
Asbestos exposure	89	
Yes (n (%))		69 (78%)
No (n (%))		20 (22%)
Smoking status	94	
Non-smoker (n (%))		25 (27%)
Ex-smoker (n (%))		57 (61%)
Current smoker (n (%))		12 (13%)
Performance status (PS)	95	
0 (n (%))		24 (25%)
1 (n (%))		43 (45%)
2+ (n (%))		28 (29%)
Comorbidities	98	
Respiratory comorbidity (n (%))		17 (17%)
Non-respiratory comorbidity (n (%))		69 (70%)
Total no of comorbidities		
0 (n (%))		24 (24%)
1 (n (%))		39 (40%)
2+ (n (%))		35 (36%)
Dyspnoea (n (%))	99	84 (85%)
Chest pain (n (%))	99	43 (43%)
Cough (n (%))	99	55 (56%)
Weight loss (n (%))	99	51 (52%)
Loss of appetite (n (%))	99	45 (45%)
Night sweats (n (%))	99	13 (13%)
Fever (n (%))	99	2 (2%)
Histological subtype	94	
Epithelioid (n (%))		63 (67%)
Sarcomatoid (n (%))		21 (22%)
Unclassified (n (%))		10 (11%)
Malignant cells (cytology) (n (%))	65	18 (28%)
Hb g/dL (mean±SD)	99	13.3±1.7

Continued

**Table 2** Continued

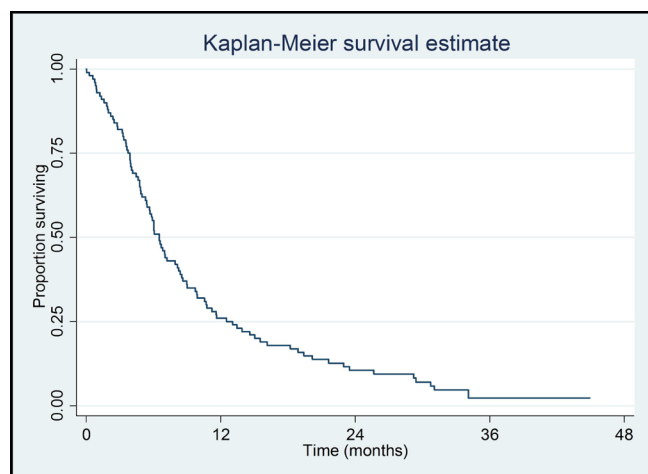
Variable	Number of patients for whom data were available	Data summary
RDW % (median (IQR))	99	14.1 (13.2 to 15.3)
PLT ×10 <sup>9</sup> /L (mean±SD)	99	340±114
WCC ×10 <sup>9</sup> /L (median (IQR))	99	9.2 (8.1 to 11.7)
NLR (median (IQR))	99	5.2 (3.4 to 7.6)
CRP mg/L (median (IQR))	66	48 (15 to 80)
Urea mmol/L (median (IQR))	98	4.7 (4.0 to 6.2)
Na mmol/L (mean±SD)	98	136±3
K mmol/L (mean±SD)	96	4.4±0.4
Creatinine µmol/L (median (IQR))	98	81 (67 to 94)
Total protein g/L (mean±SD)	92	66.9±6.1
Albumin g/L (mean±SD)	92	32.9±5.0
ALP IU/L* (median (IQR))	92	73 (56 to 92)
Adjusted calcium mmol/L (median (IQR))	80	2.32 (2.26 to 2.39)
Phosphate mmol/L (mean±SD)	77	1.16±0.23
Pleural fluid protein g/L (mean±SD)	49	43.7±8.9
Pleural fluid LDH IU/L* (median (IQR))	52	701 (488 to 1376)

Categorical variables are summarised by the number and percentage. Continuous variables with a normal distribution are summarised by the mean and SD. Continuous variables with a skewed distribution are summarised by the median and IQR.

\*International units per litre.

Univariate analysis was first performed to assess the association between each factor and survival. Where a linear relationship was not found to be appropriate, a non-linear relationship between the variable and the risk of death was assumed. The joint association between the variables and the outcome was then assessed in a multivariate analysis; only variables showing some evidence of an association with survival from the univariate analyses ( $p<0.1$ ) were included. Variables with incomplete data were also excluded from the multivariate analysis.

The variables identified to be significant in the multivariate regression analysis were then used to create a risk model to predict the probability of death within 6 months of diagnosis for each patient. A 6-month cut-off was used, as it would allow for better treatment planning in a patient group where median survival is considered to be 8–12 months from diagnosis.



**Figure 1** Kaplan-Meier plot of survival times of all 100 patients with mesothelioma.

The linear combination of the coefficients was initially calculated. For categorical variables, the coefficient was added to the total if that factor was present. For continuous variables, the coefficient was multiplied by the value for that factor. Once the linear combination was calculated, a transformation was required to obtain the predicted probability.

The predicted probability was calculated using the following formulae:

1.  $y = \sum \text{coefficients}$
2.  $p = 1 - 0.99999944^{\exp(y)}$  where:
  - $\Sigma$ =mathematical sum.
  - $p$ =Predicted risk of death at 6 months.
  - $\exp$ =exponential function.

Two aspects of the model performance were then evaluated. First, the discrimination of the model was evaluated using Harrell's C-statistic, broadly equivalent to the area under the ROC curve, examining the ability of the model to distinguish between high-risk and low-risk cases. Second, both the discrimination and calibration of the model was examined by dividing the predicted risk into three categories, each chosen to give a reasonably similar number of patients in each category. The observed percentage of graft loss within each of these three categories was calculated and this was compared with the predicted risk. The calibration of the model was also examined by the use of the Hosmer-Lemeshow test, comparing the observed and predicted number of events and non-events in the same categories.

Data were analysed using IBM SPSS statistical package V.22.0.

### Ethical approval

As all patients in this study remained anonymous, we did not require individual consent in accordance with the Medical Research Council.<sup>18</sup>

### Patient and public involvement

Opinion and feedback on study design was sought through the Hampshire Asbestos Support and Awareness Group (HASAG), a charity based in Hampshire, UK that supports people affected with MPM and their families. HASAG will also be involved in dissemination of the results via their newsletter and website.

### RESULTS

Data from a total of 100 consecutive patients diagnosed with MPM were included. Variables were collected within 2 weeks of initial presentation for all patients, apart from histological confirmation: histology was available for 92 patients at the time of diagnosis; two further patients received a cytological diagnosis; six patients received a radiological diagnosis, later confirmed on post mortem. The median time from first presentation to date of diagnosis was 14 days (IQR 8–50 days). Patient demographics and variables are summarised in table 2.

The primary outcome was patient survival: the 1-year survival was 26% (95% CI 18% to 35%). A graphical illustration of the survival times of the whole cohort is given in a Kaplan-Meier plot (figure 1).

### Univariate analysis

The association between each factor and survival was first examined in a series of univariate analyses (table 3). The size of the association between each predictor variable and survival was quantified using HRs, along with corresponding CIs.

When examined separately, a number of the variables were significantly associated with patient survival: age (HR 1.07, 95% CI 1.00 to 1.14), weight (HR 0.82, 95% CI 0.70 to 0.95), body mass index (BMI) (HR 0.71, 95% CI 0.52 to 0.96), smoking status (HR 2.20, 95% CI 1.07 to 4.51), performance status greater than 1 (HR 3.21, 95% CI 1.80 to 5.74), dyspnoea (HR 0.49, 95% CI 0.27 to 0.86), chest pain (HR 1.60, 95% CI 1.05 to 2.43), weight loss (HR 2.37, 95% CI 1.55 to 3.62), haemoglobin (HR 0.77, 95% CI 0.68 to 0.88), platelet count (HR 1.04, 95% CI 1.01 to 1.07), urea (HR 1.31, 95% CI 1.03 to 1.67), potassium (HR 2.21, 95% CI 1.09 to 4.49), creatinine (HR 40 042, 95% CI 9.2 to 1 768 852), albumin (HR 0.70, 95% CI 0.55 to 0.88), adjusted calcium (HR 1.37, 95% CI 1.10 to 1.70) and pleural fluid LDH (HR 4.26, 95% CI 1.66 to 11.0).

### Multivariate analysis

The second stage of the analysis process examined how survival was affected by the variables jointly, in a multivariate analysis. As BMI and pleural fluid data were only available for 48 and 52 patients, respectively, these variables were omitted from the analysis. A backwards selection procedure was performed to retain only the independently statistically significant variables. The final

**Table 3** Summary of the univariate analysis results for the association between the various prognostic factors and survival

Variable	N	Category/term	HR (95% CI)	P value
Age at diagnosis*	100	Linear term	1.34 (1.15 to 1.54)	<0.001
		Squared term	1.07 (1.00 to 1.14)	
Gender	100	Male	1	0.93
		Female	1.03 (0.59 to 1.79)	
Weight†	70	–	0.82 (0.70 to 0.95)	0.009
BMI*	48	–	0.71 (0.52 to 0.96)	0.03
Asbestos exposure	89	No	1	0.36
		Yes	1.27 (0.76 to 2.14)	
Smoking status	94	Non-smoker	1	0.08
		Ex-smoker	1.53 (0.93 to 2.53)	
		Current smoker	2.20 (1.07 to 4.51)	
Performance status (PS)	95	0	1	<0.001
		1	1.32 (0.79 to 2.22)	
		2+	3.21 (1.80 to 5.74)	
Respiratory Comorbidity	98	No	1	0.47
		Yes	1.22 (0.72 to 2.07)	
Other comorbidity	98	No	1	0.47
		Yes	1.18 (0.75 to 1.86)	
No of comorbidities	98	0	1	0.12
		1	1.10 (0.64 to 1.87)	
		2+	1.65 (0.96 to 2.84)	
Dyspnoea	99	No	1	0.01
		Yes	0.49 (0.27 to 0.86)	
Chest pain	99	No	1	0.03
		Yes	1.60 (1.05 to 2.43)	
Cough	99	No	1	0.72
		Yes	0.93 (0.61 to 1.40)	
Weight loss	99	No	1	<0.001
		Yes	2.37 (1.55 to 3.62)	
Loss of appetite	99	No	1	0.15
		Yes	1.35 (0.90 to 2.04)	
Night sweats	99	No	1	0.36
		Yes	1.32 (0.73 to 2.38)	
Fever	99	No	1	0.46
		Yes	0.59 (0.14 to 2.40)	
Histological Subtype	94	Epithelioid	1	0.51
		Non-epithelioid	1.20 (0.71 to 2.02)	
		Unclassified	1.44 (0.73 to 2.83)	
Malignant cells (cytology)	65	No	1	0.68
		Yes	1.13 (0.63 to 2.00)	
Hb	99	–	0.77 (0.68 to 0.88)	<0.001
RDW	99	–	1.12 (0.99 to 1.26)	0.07
PLT‡	99	Linear term	1.02 (0.91 to 1.14)	<0.001
		Squared term	1.04 (1.01 to 1.07)	
WCC	99	–	1.00 (0.94 to 1.07)	0.91
NLR*	99	–	0.97 (0.078 to 1.20)	0.79
CRP‡	66	–	0.94 (0.379 to 1.12)	0.51

Continued



Table 3 Continued

Variable	N	Category/term	HR (95% CI)	P value
Urea*	98	–	1.31 (1.03 to 1.67)	0.03
Na*	98	–	1.00 (0.73 to 1.38)	0.98
K	96	Linear term	1.45 (0.91 to 2.29)	0.03
		Squared term	2.21 (1.09 to 4.49)	
Creatinine§	98	Linear term	0.71 (0.11 to 0.57)	0.006
		Squared term	40042 (9.2 to 1 768 852)	
Total protein*	92	–	0.98 (0.83 to 1.17)	0.83
Albumin*	92	–	0.70 (0.55 to 0.88)	0.003
ALP§	92	–	2.21 (0.70 to 6.98)	0.18
Adjusted calcium¶	80	–	1.37 (1.10 to 1.70)	0.005
Phosphate¶	77	–	0.92 (0.81 to 1.05)	0.21
Pleural fluid protein*	49	–	0.96 (0.80 to 1.13)	0.6
Pleural fluid LDH§	52	–	4.26 (1.66 to 11.0)	0.003

For categorical predictor variables, the HRs give the risk of death in each category relative to the risk in a baseline category. For continuous predictor variables, the HRs give the relative change in the risk of death at any time for an increase in that variable.

\*HRs reported for a 5-unit increase in variable.

†HRs reported for a 10-unit increase in variable.

‡HRs reported for a 50-unit increase in variable.

§Variable analysed on a log scale (base 10).

¶HRs reported for a 0.1-unit increase in variable.

model, based on data from 74 patients, is summarised in table 4.

The multivariate results suggest that the predictor variables of age (HR 1.31, 95% CI 1.09 to 1.56), smoking status (current smoker HR 3.42, 95% CI 1.11 to 4.20), chest pain (HR 2.14, 95% CI 1.23 to 3.72), weight loss (HR 2.13, 95% CI 1.18 to 3.72), platelet count (HR 1.05, 95% CI 1.00 to 1.10), urea (HR 2.73, 95% CI 1.31 to 5.69) and adjusted calcium (HR 1.47, 95% CI 1.10 to 1.94) are independently associated with patient survival. After adjusting for the variables in the final model, there is no longer a significant effect of weight, performance status, dyspnoea, haemoglobin, potassium, creatinine or albumin on the outcome.

The univariate analysis suggests a non-linear relationship for age. However, after adjusting for the other factors, there was a steady increase in the risk of death with increased age: a 5-year increase in age was associated with a 31% increase in the risk of death.

Smoking status, while only of borderline significance in the univariate analysis, was found to be more strongly significant in the multivariate analysis. Ex-smokers and current smokers were at increased risk: the risk of death at any time was 3.4 times greater for current smokers and 2.16 times greater for ex-smokers than for non-smokers.

As in the univariate analyses, in the multivariate analysis patients with chest pain and weight loss were both at increased risk with a 2.14 and 2.13 times greater risk of death at any time, respectively. Higher urea and adjusted calcium values were also associated with increased risk.

The HRs for platelet count were broadly similar to those observed in the univariate analyses.

### Development of a risk model to predict prognosis

Regression coefficients were then calculated for the risk model. These factors were used as they were found to be independently most significantly associated with patient

Table 4 Summary of the multivariate analysis results for the association between selected prognostic variables and survival

Variable	Category/term	HR (95% CI)	P value
Age at diagnosis*	–	1.31 (1.09 to 1.56)	0.004
Smoking status	Non-smoker	1	0.03
	Ex-smoker	2.16 (1.09 to 1.56)	
	Current smoker	3.42 (1.11 to 4.20)	
Chest pain	No	1	0.007
	Yes	2.14 (1.23 to 3.72)	
Weight loss	No	1	0.01
	Yes	2.13 (1.18 to 3.86)	
PLT†	Linear term	1.05 (0.91 to 1.20)	0.01
	Squared term	1.05 (1.00 to 1.10)	
Urea*	–	2.73 (1.31 to 5.69)	0.008
Adjusted calcium‡	–	1.47 (1.10 to 1.94)	0.008

\*HRs reported for a 5-unit increase in variable.

†HRs reported for a 50-unit increase in variable.

‡HRs reported for a 0.1-unit increase in variable.

**Table 5** Summary of the regression coefficients for chosen variables

Variable	Coefficient
Age at diagnosis	0.053
Ex-smoker	0.772
Current smoker	1.230
Chest pain	0.759
Weight loss	0.757
PLT	-0.0115
PLT <sup>2</sup>	0.000018
Urea	0.201
Adjusted calcium	3.830

survival. A summary of the regression coefficients for all variables in the final model are given in [table 5](#).

### Results of the risk model

The discrimination of the model was examined using Harrell's c-statistic: a c-statistic value of 0.76 for this dataset suggests the model has some ability to discriminate between low-risk and high-risk patients. Patients were split into one of three groups based on their predicted risk of death within 6 months. A comparison of the predicted risk of death at 6 months and the actual observed occurrence of death at 6 months was made, and the results are summarised in [table 6](#).

The results demonstrate that the percentage of deaths predicted at 6 months increased proportionally with increased risk group, suggesting that the model has good discrimination. The actual percentage of observed deaths at 6 months was similar to the predicted values, demonstrating good calibration.

The Hosmer-Lemeshow test was also used to examine the calibration of the model in terms of the predicted cases of death within 6 months. A summary of the observed and predicted number of deaths is shown in [table 7](#) along with the results of the test.

The non-significant result suggests good agreement between observed and predicted numbers of cases of death at 6 months for each of the risk groups. Thus, this result suggests a good calibration of the model.

**Table 6** Comparison of the predicted risk of death at 6 months and actual observed occurrence of death at 6 months

Risk group	Number of subjects	Predicted deaths in 6 months	Observed deaths at 6 months
≤25%	23	13.8%	17.4%
26%–60%	25	37.9%	32.0%
>60%	26	83.6%	80.8%

**Table 7** Summary of the observed and predicted number of deaths

Risk group	Observed number of deaths	Predicted number of deaths	$\chi^2$ statistic/p value
≤25%	4	3.2	$\chi^2=0.8$
26%–60%	8	9.4	p=0.38
>60%	21	21.7	

### DISCUSSION

This was a retrospective analysis of potential prognostic factors in patients newly diagnosed with MPM. These factors were then used to develop a risk prediction model for death at 6 months. We identified age, smoking status, symptoms of chest pain and weight loss at presentation, and raised platelet count, urea and creatinine, as markers of poor prognosis in MPM.

The demographics of our patient cohort broadly reflect those of patients with MPM diagnosed within the UK during this period,<sup>19</sup> with a similar average age at diagnosis and strong male predominance. However, 1-year survival was lower than that seen nationally (26% vs 40%). Variation in survival between different centres has previously been recognised,<sup>5</sup> and may be explained by performance status and comorbidity.

### Clinical variables

The data from this study demonstrated a steady increase in the risk of death from MPM with increasing age. Age is widely accepted as a significant determinant of life expectancy. However, age in determining prognosis in patients in mesothelioma has been contentious. Although studies have previously reported age as a significant variable,<sup>20–22</sup> there are studies that suggest age has no prognostic significance.<sup>8</sup>

This study also found that smoking status was of value in predicting risk of mortality at 6 months. The multivariate analysis showed smoking to be significantly associated with increased risk of death in both ex-smokers and current smokers. Previous studies have similarly not found a significant association between smoking status and prognosis in univariate analysis<sup>9 15</sup>; however, smoking status was consequently omitted from multivariate analysis in these studies. It is also possible that smoking status is a surrogate for other comorbid factors relating to prognosis which were not recorded elsewhere in the database.

Chest pain and weight loss were associated with poorer outcomes. Few studies have previously examined a direct correlation between baseline symptoms and prognosis in patients with MPM, with conflicting evidence in this area: studies have previously demonstrated no significant association between weight loss and survival,<sup>6</sup> although one study has demonstrated an association between weight loss at diagnosis and survival at 18 months.<sup>11</sup> Chest pain is likely to reflect tumour invasion and is a surrogate marker



for cancer stage, whereas weight loss is a modifiable variable that can be directly addressed. A study examining quality of life in patients with MPM identified pain as a symptom significantly associated with worse global quality of life,<sup>22</sup> and further work in this field has identified that baseline quality of life is a significant prognostic factor for survival.<sup>23 24</sup> An American study evaluating the role of early specialist symptom control delivered by palliative care specialists in advanced lung cancer reported better quality of life and improved survival.<sup>25</sup> This work has identified an as-yet unmet need for research investigating the benefits of better symptom control on improving survival in mesothelioma.

Surprisingly, variables such as performance status, histological subtype and patient gender which in previous literature have been associated with prognostic outcome<sup>14 21 26 27</sup> were not found to be significant. It is possible that in some cases, patients with suspected MPM and worse performance states may not have been included in the database as their frailty may have limited the ability to confirm diagnosis of MPM. This may explain why performance status, which is generally accepted as a strong predictor of mortality, was not significantly associated with risk of death in this study. Similarly, since some histological subtypes have previously been associated with rapid decline in performance status, it is possible that frailty in patients with more aggressive histological subtypes limited the ability to confirm a diagnosis of MPM and thus were not included in the database. While reflective of the demographic of patients diagnosed with MPM, it is possible the small size of the female cohort influenced the strength of the association with gender.

### Biochemical variables

Certain routine biochemical markers act as a surrogate for the patient's overall condition, as a reflection of systemic illness. Studies have previously demonstrated the value of routine laboratory tests in predicting mortality in other pulmonary diseases, such as chronic obstructive pulmonary disease.<sup>28</sup> However, to date there has been limited data available on routinely available biochemical variables in mesothelioma.

Previous work has showed certain cancer types including mesothelioma to produce large amounts of interleukin-6 (IL-6)<sup>29 30</sup> which are strongly correlated with platelet count, suggesting that IL-6 may have a role in tumour-associated thrombocytosis.<sup>29</sup> Data on platelet count as a predictor of survival are conflicting, with some evidence showing no prognostic relevance.<sup>31</sup> However, two more recent studies showed a significant association with higher platelet counts and poorer survival<sup>15 16</sup>; this was also demonstrated in our study, although the effect in the multivariate analysis was small.

The multivariate analysis identified elevated serum urea and calcium to be associated with an increased risk of death at 6 months. While there are limited data on urea as a prognostic marker for mesothelioma, a recent

retrospective analysis of 114 patients also identified elevated serum urea to be a predictor of poor outcome<sup>17</sup> which is supportive of our findings.

A limitation to this work is that, as with many other studies evaluating prognosis, analysis was tested on a retrospective population, thus limiting the quality of evidence. Another shortcoming was the proportion of missing data encountered for certain variables, attributed to the retrospective nature of the study, resulting in their exclusion from analysis; for example, BMI and pleural fluid data.

### CONCLUSION

In summary, we have developed a model to predict risk of death at 6 months in patients with a confirmed diagnosis of MPM using variables readily available in clinical practice, derived from an unselected population at diagnosis. Although these factors alone cannot be used in isolation to predict prognosis, their presence may provide clinical teams with additional information when discussing life expectancy with patients and their families. Further validation of the model requires evaluation of its performance on a separate dataset, which we intend to do with data from a recently completed national study (RESPECT-Meso<sup>7</sup>).

**Contributors** SaG, CF, PB, ShG, SE and AC contributed to the study design. SaG, DN, TJ, SB, SK, LM, ShG, SE, RS and LB contributed to the data collection. PB conducted the statistical analysis. SaG, DL, CF and AC drafted the initial manuscript. SaG, DL, PB and AC revised the manuscript. All authors approved the final manuscript as submitted.

**Funding** The authors have not declared a specific grant for this research from any funding agency in the public, commercial or not-for-profit sectors.

**Competing interests** None declared.

**Patient and public involvement** Patients and/or the public were involved in the design, or conduct, or reporting, or dissemination plans of this research. Refer to the Methods section for further details.

**Patient consent for publication** Not required.

**Ethics approval** Ethical approval for this research was granted on 16 April 2014 by the National Research Ethics Service (NRES) Committee London-Camberwell St Giles Research Ethics Committee (REC) (reference no. 14/LO/0628).

**Provenance and peer review** Not commissioned; externally peer reviewed.

**Data availability statement** Data are available on reasonable request, by contacting the Portsmouth Hospital Respiratory Research department (respiratoryresearch@porthosp.nhs.uk).

**Open access** This is an open access article distributed in accordance with the Creative Commons Attribution Non Commercial (CC BY-NC 4.0) license, which permits others to distribute, remix, adapt, build upon this work non-commercially, and license their derivative works on different terms, provided the original work is properly cited, appropriate credit is given, any changes made indicated, and the use is non-commercial. See: <http://creativecommons.org/licenses/by-nc/4.0/>.

### ORCID iD

David Lodge <http://orcid.org/0000-0002-3762-0284>

### REFERENCES

- 1 Woolhouse I, Bishop L, Darlison L, *et al*. British Thoracic Society guideline for the investigation and management of malignant pleural mesothelioma. *Thorax* 2018;73:i1–30.
- 2 Brims FJH, Maskell NA. Prognostic factors for malignant pleural mesothelioma. *Curr Respir Care Rep* 2013;2:100–8.
- 3 Odgerel C-O, Takahashi K, Sorahan T, *et al*. Estimation of the global burden of mesothelioma deaths from incomplete national mortality data. *Occup Environ Med* 2017;74:851–8.



- 4 Health and safety executive. Mesothelioma in Great Britain, 2019. Available: <http://www.hse.gov.uk/statistics/causdis/mesothelioma/mesothelioma.pdf>
- 5 Brims F, Gunatilake S, Lawrie I, *et al.* Early specialist palliative care on quality of life for malignant pleural mesothelioma: a randomised controlled trial. *Thorax* 2019;74:354–61.
- 6 Curran D, Sahmoud T, Therasse P, *et al.* Prognostic factors in patients with pleural mesothelioma: the European Organization for Research and Treatment of Cancer experience. *J Clin Oncol* 1998;16:145–52.
- 7 Herndon JE, Green MR, Chahinian AP, *et al.* Factors predictive of survival among 337 patients with mesothelioma treated between 1984 and 1994 by the Cancer and Leukemia Group B. *Chest* 1998;113:723–31.
- 8 Edwards JG, Abrams KR, Leverment JN, *et al.* Prognostic factors for malignant mesothelioma in 142 patients: validation of CALGB and EORTC prognostic scoring systems. *Thorax* 2000;55:731–5.
- 9 Steele JPC. Prognostic factors for mesothelioma. *Hematol Oncol Clin North Am* 2005;19:1041–52.
- 10 Clive AO, Kahan BC, Hooper CE, *et al.* Predicting survival in malignant pleural effusion: development and validation of the LENT prognostic score. *Thorax* 2014;69:1098–104.
- 11 Brims FJH, Meniawy TM, Duffus I, *et al.* A novel clinical prediction model for prognosis in malignant pleural mesothelioma using decision tree analysis. *J Thorac Oncol* 2016;11:573–82.
- 12 Robinson BM. Malignant pleural mesothelioma: an epidemiological perspective. *Ann Cardiothorac Surg* 2012;1:491–6.
- 13 Health and Safety Executive. Mesothelioma mortality by geographical area 1981–2015, 2017. Available: <http://www.hse.gov.uk/statistics/causdis/mesothelioma/mesoarea1981to2015.pdf>
- 14 van der Bij S, Koffijberg H, Burgers JA, *et al.* Prognosis and prognostic factors of patients with mesothelioma: a population-based study. *Br J Cancer* 2012;107:161–4.
- 15 Borasio P, Berruti A, Billé A, *et al.* Malignant pleural mesothelioma: clinicopathologic and survival characteristics in a consecutive series of 394 patients. *Eur J Cardiothorac Surg* 2008;33:307–13.
- 16 Tanrikulu AC, Abakay A, Kaplan MA, *et al.* A clinical, radiographic and laboratory evaluation of prognostic factors in 363 patients with malignant pleural mesothelioma. *Respiration* 2010;80:480–7.
- 17 Marshall AD, Bayes HK, Bardgett J, *et al.* Survival from malignant mesothelioma: where are we now? *J R Coll Physicians Edinb* 2015;45:123–6.
- 18 Medical Research Council. Medical Research Council guidance on patient consent, 2018. Available: <https://mrc.ukri.org/research/policies-and-guidance-for-researchers/guidance-on-patient-consent/> [Accessed Aug 2019].
- 19 Royal College of Physicians. *National lung cancer audit: pleural mesothelioma report 2016 (for the audit period 2014)*. London: Royal College of Physicians, 2016.
- 20 Milano MT, Zhang H. Malignant pleural mesothelioma: a population-based study of survival. *J Thorac Oncol* 2010;5:1841–8.
- 21 Nojiri S, Gemba K, Aoe K, *et al.* Survival and prognostic factors in malignant pleural mesothelioma: a retrospective study of 314 patients in the west part of Japan. *Jpn J Clin Oncol* 2011;41:32–9.
- 22 Hollen PJ, Gralla RJ, Liepa AM, *et al.* Adapting the Lung Cancer Symptom Scale (LCSS) to mesothelioma. *Cancer* 2004;101:587–95.
- 23 Langendijk H, Aaronson NK, de Jong JM, *et al.* The prognostic impact of quality of life assessed with the EORTC QLQ-C30 in inoperable non-small cell lung carcinoma treated with radiotherapy. *Radiother Oncol* 2000;55:19–25.
- 24 Montazeri A, Milroy R, Hole D, *et al.* Quality of life in lung cancer patients: as an important prognostic factor. *Lung Cancer* 2001;31:233–40.
- 25 Temel JS, Greer JA, Muzikansky A, *et al.* Early palliative care for patients with metastatic non-small-cell lung cancer. *N Engl J Med* 2010;363:733–42.
- 26 Montanaro F, Rosato R, Gangemi M, *et al.* Survival of pleural malignant mesothelioma in Italy: a population-based study. *Int J Cancer* 2009;124:201–7.
- 27 Neumann V, Rütten A, Scharmach M, *et al.* Factors influencing long-term survival in mesothelioma patients—results of the German mesothelioma register. *Int Arch Occup Environ Health* 2004;77:191–9.
- 28 Asimwe AC, Brims FJH, Andrews NP, *et al.* Routine laboratory tests can predict in-hospital mortality in acute exacerbations of COPD. *Lung* 2011;189:225–32.
- 29 Gastl G, Plante M, Finstad CL, *et al.* High IL-6 levels in ascitic fluid correlate with reactive thrombocytosis in patients with epithelial ovarian cancer. *Br J Haematol* 1993;83:433–41.
- 30 Higashihara M, Sunaga S, Tange T, *et al.* Increased secretion of interleukin-6 in malignant mesothelioma cells from a patient with marked thrombocytosis. *Cancer* 1992;70:2105–8.
- 31 Spirtas R, Connelly RR, Tucker MA. Survival patterns for malignant mesothelioma: the seer experience. *Int J Cancer* 1988;41:525–30.