

RESEARCH ARTICLE

Frequency-Dependent Changes of Local Resting Oscillations in Sleep-Deprived Brain

Lei Gao^{1,2}, Lijun Bai³, Yuchen Zhang⁴, Xi-jian Dai², Rana Netra¹, Youjiang Min⁵, Fuqing Zhou², Chen Niu¹, Wanghuan Dun¹, Honghan Gong^{2*}, Ming Zhang^{1*}

1 Department of Medical Imaging, the First Affiliated Hospital of Xi'an Jiaotong University, Xi'an, China, **2** Department of Radiology, the First Affiliated Hospital of Nanchang University, Nanchang, Jiangxi Province, China, **3** The Key Laboratory of Biomedical Information Engineering, Ministry of Education, Department of Biomedical Engineering, School of Life Science and Technology, Xi'an Jiaotong University, Xi'an, China, **4** Zonglian Experimental Class, Xi'an Jiaotong University, Xi'an, China, **5** Acupuncture & Rehabilitation Department, Affiliated Hospital of Jiangxi University of Traditional Chinese Medicine, Nanchang, Jiangxi Province, China

☞ These authors contributed equally to this work.

* zmmri@163.com (MZ); honghan_gong@sina.com (HG)



OPEN ACCESS

Citation: Gao L, Bai L, Zhang Y, Dai X-j, Netra R, Min Y, et al. (2015) Frequency-Dependent Changes of Local Resting Oscillations in Sleep-Deprived Brain. PLoS ONE 10(3): e0120323. doi:10.1371/journal.pone.0120323

Academic Editor: Yijun Liu, University of Florida, UNITED STATES

Received: April 8, 2014

Accepted: February 5, 2015

Published: March 23, 2015

Copyright: © 2015 Gao et al. This is an open access article distributed under the terms of the [Creative Commons Attribution License](https://creativecommons.org/licenses/by/4.0/), which permits unrestricted use, distribution, and reproduction in any medium, provided the original author and source are credited.

Data Availability Statement: All the data files are available from the "Harvard Dataverse Network" database (accession number 10.7910/DVN/27748).

Funding: This study was supported by the National Natural Science Foundation of China (Grant No. 81371630, 81260217, and 81371530), the Fundamental Research Funds for the Central Universities, the Beijing Nova program (grant number Z111101054511116), and the Beijing Natural Science Foundation (grant number 4122082).

Competing Interests: The authors have declared that no competing interests exist.

Abstract

Sleep deprivation (SD) adversely affects brain function and is accompanied by frequency dependent changes in EEG. Recent studies have suggested that BOLD fluctuations pertain to a spatiotemporal organization with different frequencies. The present study aimed to investigate the frequency-dependent SD-related brain oscillatory activity by using the amplitude of low-frequency fluctuation (ALFF) analysis. The ALFF changes were measured across different frequencies (Slow-4: 0.027–0.073 Hz; Slow-5: 0.01–0.027 Hz; and Typical band: 0.01–0.08 Hz) in 24 h SD as compared to rested wakeful during resting-state fMRI. Sixteen volunteers underwent two fMRI sessions, once during rested wakefulness and once after 24 h of SD. SD showed prominently decreased ALFF in the right inferior parietal lobule (IPL), bilateral orbitofrontal cortex (OFC) and dorsolateral prefrontal cortex (DLPFC), while increased ALFF in the visual cortex, left sensorimotor cortex and fusiform gyrus. Across the Slow-4 and Slow-5, results differed significantly in the OFC, DLPFC, thalamus and caudate in comparison to typical frequency band; and Slow-4 showed greater differences. In addition, negative correlations of behavior performance and ALFF patterns were found mainly in the right IPL across the typical frequency band. These observations provided novel insights about the physiological responses of SD, identified how it disturbs the brain rhythms, and linked SD with frequency-dependent alterations in amplitude patterns.

Introduction

Sleep is supposed to be beneficial to synaptic renormalization that is sustainable and ensures homeostatic changes in brain's symphony [1]. Sleep deprivation (SD) has been associated with deteriorative attention, memory, decision making and executive function [2,3,4,5,6,7,8,9,10,11]. In this regards, sleep deprivation may stand for an increasing burden on integrity of

brain's functional architecture. Resting-state fMRI offers a suitable avenue to characterize the brain intrinsic functional architecture associated with sleep deprivation from low-frequency (0.01–0.08 Hz) blood oxygen level dependent (BOLD) signal dynamics.

Resting state fMRI studies have found altered functional connectivity in the sleep-deprived brain [12,13,14,15,16,17]. Evidence for the impact of sleep deprivation on the default mode network (DMN) [18,19] has shown significantly disrupted patterns of task-related deactivation, resulting in a double dissociation within anterior as well as posterior midline regions of the DMN [12]. Besides, multiple observations of altered connectivity intra- and inter- various resting-state networks have been reported for SD [12,13,14,15,16,20,21,22]. Such findings suggest that SD disturbs ongoing patterns of resting-state activity for internal processing of information.

Recent studies have demonstrated that the oscillatory dynamics of BOLD signal is sensitive to specific frequency bands [23,24,25]. For example, Zuo et al. [24] have showed that amplitude of low-frequency fluctuations (ALFF) in the slow-4 band (0.027–0.073 Hz) were higher than that of in the slow-5 (0.01–0.027 Hz) in a wide range of brain regions such as the basal ganglia, thalamus, and precuneus (PCu). Other studies indicate that different frequency bands can distinguish alterations in various diseases such as schizophrenia, chronic back pain, mild cognitive impairment (MCI) & Alzheimer's disease (AD), and personality traits [26,27,28,29,30]. However, previous studies have demonstrated that sleep deprivation induces frequency specific changes in the EEG during wakefulness [31,32,33]. It would be noted that brain rhythms of intrinsic BOLD fluctuations represent an organized architecture of brain function and may be altered in sleep-deprived brain. SD means a burden to restore the oscillatory configuration that is optimal for information processing. Therefore, examining changes in the brain's BOLD oscillatory dynamics may provide us with novel insight regarding to the physiological responses underlying SD.

In this study, we examine changes in ALFF across different frequencies (Slow-4: 0.027–0.073 Hz; Slow-5: 0.01–0.027 Hz, and typical band: 0.01–0.08 Hz). ALFF needs no priori and offers a valuable tool to investigate local features of brain oscillatory activity [34,35,36]. We hypothesized that the local resting brain activity would be altered after 24h of sleep deprivation and the alterations may be frequency-dependent.

Materials and Methods

Subjects

Sixteen healthy volunteers (8 females, 8 males) with a mean age of 22.1 ± 0.8 years were recruited by campus advertising, with the approval by the medical research ethics committee and institutional review board of the First Affiliated Hospital of Nanchang University. The written informed consent for participation was obtained. Participants had an average of 15.7 ± 1.2 years of education. All of them were right handed (as determined by the modified Edinburgh Handedness Questionnaire) and had negative history of neurological, psychiatric, or sleep disorders. There were no history of drug abuse and current use of anti-depressant or hypnotic medications.

Sleep deprivation and experimental protocol

Subjects were scheduled for fMRI measurements starting at 7:00 PM. There are one fMRI scanning following the individual's habitual sleep schedule called a rested wakeful night (RW) and the other fMRI scanning after a night of total SD. The sequence of experiments was counterbalanced across sessions and approximately two weeks apart between two experiments. Subjects were forbidden to tea, coffee or caffeine content drinks and alcohol intake for 72 h before and

during the fMRI examination. Sleep logs were kept from a week prior to the study night. During sleep deprivation, subjects stayed up the whole night in the laboratory under the direct supervision of a researcher.

Participants showed normal sleep quality as assessed using the Pittsburgh Sleep Quality Index (PSQI) [37] (mean±SD, 1.5±0.97) and normal daytime sleepiness as assessed using the Epworth Sleepiness Scale (ESS)[38] (mean±SD, 6.44±2.07). They had a BMI (in kg/m²) of 17.5–22, and were free of nightshift work. Before experiment (approximately 4 weeks), subjects were required to sleep 7–9 h/night, preceding 01:00 a.m on average and keep sleep logs.

A behavior test was performed by each subject prior to fMRI scanning. Word stimuli were displayed in the center of 15.4 inch color monitor on an ASUS F5SL notebook PC running DMDX v.3.0.4 [39]. Screen resolution was set at 800×600 pixel, 16 bit (65,536 colors). White words of 10 mm in size were presented on a black background. During the experiment, each pair of stimuli was presented for 900 ms separated by a blank screen for 500 ms. Subjects had 2,500 ms between trials to judge whether the two words were semantically related or not. A positive response was indicated by pressing the right button using the middle finger of the right hand, while a negative response was represented corresponding left button to the index finger of the right hand. Participants were encouraged to proceed as quickly and accurately as possible. Accuracy and reaction times (RTs) (to the nearest millisecond) were recorded. Before the formal test, a short period of practice with a different set of sentences was provided.

Data acquisition

MRI data were collected on a SIEMENS Trio 3.0 T scanner. Each subject lied on supine with the head in neutral position fixed comfortably by a belt and foam pads during the test. The scanning sessions included: (1) localizer, (2) T1 MPRAGE anatomy (176 sagittal slices, thickness/gap = 1.0/0 mm, in-plane resolution = 256 × 256, FOV (field of view) = 240 mm × 240 mm, TR (repetition time) = 1900 ms, TE (echo time) = 2.26 ms, flip angle = 15°), (3) EPI-BOLD (36 axial slices, echo-planar imaging pulse sequence, thickness/gap = 5.0/1 mm, in-plane resolution = 64 × 64, TR = 3000 ms, TE = 30 ms, flip angle = 90°, FOV = 240 mm × 240 mm). The sequence of scanning included a resting-state session, a task-state session, and another resting-state session. Only the first resting-state data was analyzed in this study. During the resting-state fMRI sessions, subjects were asked to remain as calm as possible and keep their eyes closed but not to fall asleep.

Behavioral analysis

To examine changes in behavior performance over the course of the SD sessions, the mean RT and false rates (button pressed following a cue) about the accuracy of performance were computed respectively.

MRI Data preprocessing

For the resting-state fMRI data, the first 2 volumes were discarded to avoid the possible effects of scanner instability and adaptation of subjects to the circumstances. The initial data preprocessing was performed using SPM8 (<http://www.fil.ion.ucl.ac.uk/spm>) and DPARSF 2.3 (<http://www.restfmri.net/>), including slice timing, head motion correction (a least squares approach and a 6 parameter spatial transformation), spatial normalization to the Montreal Neurological Institute (MNI) template (resampling voxel size = 3×3×3 mm³), and spatial smoothing (full width at half maximum = 6 mm Gaussian kernel). Further data preprocessing was performed using REST 1.8 (<http://www.restfmri.net/>) involved the removal of linear trends

and filtering (0.01–0.08Hz) to reduce the influences of low-frequency drift and high-frequency noise.

For head motion correction session, we also calculated the frame-wise displacement (FD) which represents the scalar quantity of instantaneous head motion of each volume relative to its earlier neighboring volume. Recent studies have indicated that even little head motion can significantly influence the measures of resting-state fMRI [40,41,42,43]. In the present study, we take the following measures to reduce these motion effects: *i*) no subject was found with maximum displacement in one or more of the orthogonal directions > 0.5 mm or a maximum rotation $> 0.5^\circ$; *ii*) the voxel-specific framewise displacement (FDvox) described as Yan et al.[42] was calculated for each subject, and considered as nuisance covariates in the statistical analyses.

ALFF analysis

ALFF was calculated using REST 1.8 (<http://www.restfmri.net/>). Briefly, for the given voxel, the time series was first converted to the frequency domain using a Fast Fourier Transform. The square root of the power spectrum was computed and then averaged across a predefined frequency interval. This averaged square root was termed ALFF at given voxel. ALFF measures the absolute strength or intensity of low-frequency fluctuations.

In order to investigate alterations after 24h of sleep deprivation, we calculated ALFF at the typical frequency band (0.01–0.08 Hz), slow-4 (0.027–0.073 Hz) and slow-5 (0.01–0.027 Hz) band respectively. Then, ALFF of each voxel was computed for each participant and was further divided by global mean value to reduce the global effects of variability across participants [35,44].

Statistical analyses

We first used paired-t tests to determine the effects of sleep deprivation on performance measures of reaction time (RT) and accuracy between SD and RW groups.

For ALFF, a one-sample one-sided t-test was performed within each group to determine whether the ALFF differed from the value of 1 [18,35], and a paired t test to see the differences between groups in the typical frequency band (0.01–0.08 Hz). For the comparison of frequency bands and their interaction between SD and RW groups, the data were analyzed with 2×2 within-subject repeated-measures ANOVA with condition (RW, SD) and frequency band (slow-4, slow-5) to minimize the chance of type I error. The regions that showed significant differences were then used for a post-hoc analysis. Voxels with a *p* value < 0.01 , cluster size > 1053 mm³ (39 voxels), and corresponding to AlphaSim $p < 0.05$ corrected (<http://www.restfmri.net/>) were considered to have a significant statistical difference between two groups.

Brain–behavior relationships

To further evaluate the relationship between ALFF changes and task performance after SD, we examined the *Pearson's* correlation between ALFF values of peak voxels in group-difference areas and behavioral performance RT.

Results

Performance findings

In order to test the effects of sleep deprivation on the short-time memory, sixteen subjects performed semantic discrimination task before fMRI scanning (see [methods](#)) in RW and SD conditions. Behavioral measures of RT and accuracy for each condition were calculated (see

methods). There was no significant difference in accuracy between the SD and RW groups. The SD group had significantly longer RT than that of the RW group ($RW = 2,010.4 \pm 227.17$ (ms), $SD = 2,275.1 \pm 176.66$ (ms), $T = -3.858$, $d.f. = 15$, $P < 0.002$).

ALFF analyses in typical frequency band (0.01–0.08 Hz)

Before comparing the between-group ALFF significances, we first report ALFF results from the typical frequency band (0.01–0.08 Hz) separately, both SD and RW groups showed a significant higher ALFF value level than global average in some regions including the visual cortex, posterior cingulate cortex (PCC)/ precuneus (PCu), bilateral thalamus, bilateral ventral medial prefrontal cortex (VMPFC), bilateral middle temporal gyrus (MTG) and dorsolateral prefrontal cortex (DLPFC), mainly along the midline and visual cortices. We note that many regions are components of what is known as the most prominent intrinsically connected hubs, namely the DMN. This finding is consistent with the conclusion that these regions represent the most prominent and functional core underlying resting brain dynamics [24]. Obviously the ALFF strength was lower in SD group, comparing with the RW control, the results may indicate a global change of spontaneous brain activity pattern (Fig. 1 and S1 Fig.).

We then contrasted these ALFF patterns between the two groups, thereby identifying the consequential differences resulting from 24h SD, relative to a normal night’s sleep. As expected,

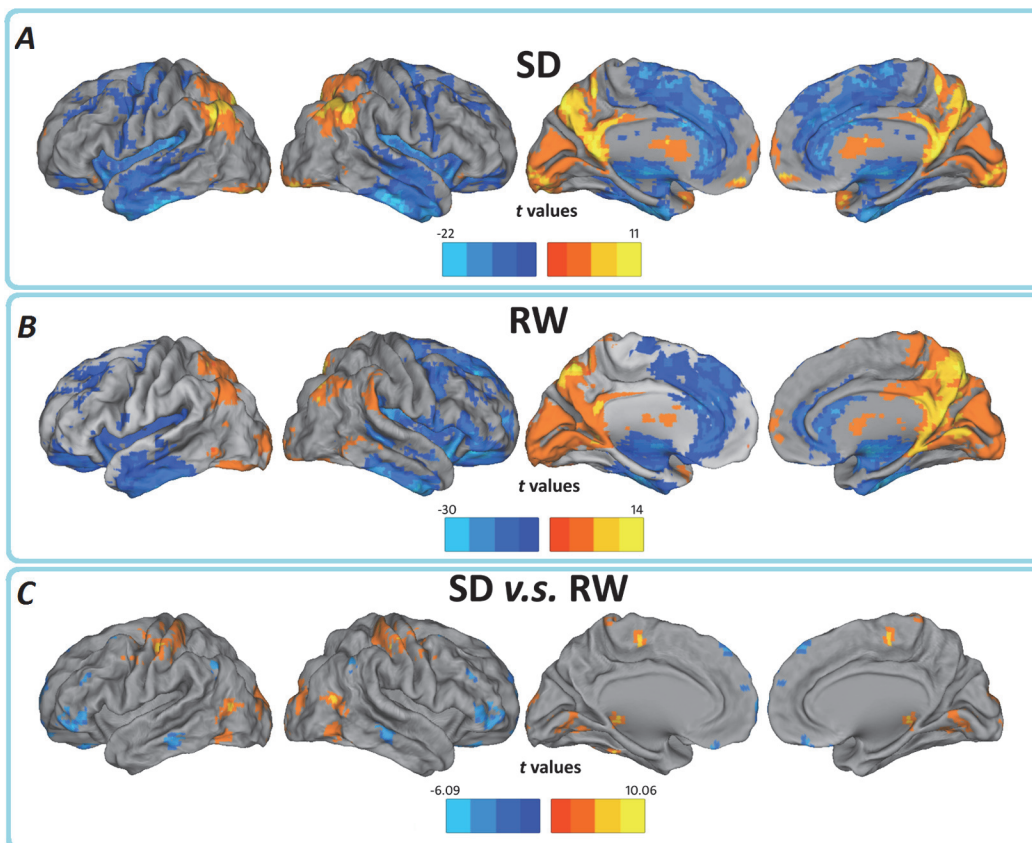


Fig 1. In typical frequency band (0.01–0.08Hz), regions of significant ALFF in the (A) SD and (B) RW groups separately, and their (C) between-group differences. The effects are significant at $p < 0.05$, FDR corrected; ≥ 100 contiguous voxels for one sample t test, and $p < 0.05$, AlphaSim corrected for paired t test. In the paired t test, cool color indicates that the SD group had decreased ALFF compared with the controls and the hot color indicates the opposite. Left in the figure indicates the left side of the brain.

doi:10.1371/journal.pone.0120323.g001

we find significant ALFF decreases in the bilateral OFC (BA 11/47), bilateral DLPFC (BA 46), and right inferior parietal lobule (IPL, BA39/40) following 24h SD. Interestingly, we also observed that the SD group showed increased ALFF in the left somatosensory cortex (SMC), left fusiform gyrus (BA 37) and visual cortex (BA 18/19) (Fig. 1 and S1 Fig.; Table 1), few similar results were reported previously. It is unclear whether such increase simply imply a rise overall variance in the ambient BOLD activity (reflective of higher metabolic activity) or a reduced LFF activity in the SD. To clarify this issue, we further measured the regional LFF changes by examining regional coherence in a pure resting state. Regional coherence was assessed using regional homogeneity (ReHo) method [45]. Briefly, ReHo measures the temporal synchronization of the time series of nearest neighbors (for detail, see [45]), using this procedure, we found that the SD group also showed significantly increased ReHo in the SMC and visual cortex, indicated SMC and visual cortex in this compensation.

ALFF changes in different frequency bands

Previous studies used EEG or MEG showed sleep deprivation induced frequency-specific changes of brain networks [31,32,33], some recent studies indicate different frequency bands between low-frequency (i.e. 0.01–0.08 Hz) may be distinct in several brain regions [24]. In order to investigate specific alterations after one night of SD, we also subdivided the low frequency range into four bands as previously defined [24,27]: slow-5 (0.01–0.027 Hz) and slow-4 (0.027–0.073 Hz). To test for the presence of regional differences in ALFF at two bands, we carried out two-way repeated measures ANOVA analysis between the slow-5 and slow-4 bands for ALFF.

Main effects from the two-way repeated measures ANOVA are shown in Fig. 2. Brain regions with a main effect of group, including bilateral orbitofrontal cortex (OFC), cerebellar tonsil, right inferior temporal gyrus (rITG), bilateral fusiform gyrus (FG), right parahippocampal gyrus (rPHG), right middle frontal gyrus (rMFG), left superior frontal gyrus, left inferior temporal gyrus right angular gyrus, right middle cingulate gyrus (SD<RW); bilateral fusiform gyrus (BA 19/37), left inferior occipital lobe(BA 18), bilateral lingual gyrus(BA 18/30), left middle temporal gyrus (BA19/37/39), bilateral postcentral gyrus and precentral gyrus (BA 1/2/3 / 4/6/40/43), and right paracentral lobe (BA 6) (SD>RW).

Brain regions showing a significant main effect for frequency band were identified in the bilateral orbitofrontal cortex, right fusiform gyrus (BA 38), (BA 11/47), right temporal gyrus(BA 21) (Slow-4<Slow-5); left cerebellum, left brainstem, bilateral hippocampus (BA 13/47),

Table 1. In the typical frequency band, detailed information for clusters showing group ALFF differences at the given threshold ($p < 0.05$, AlphaSim corrected).

Brain regions	MNI coordinates			BA	L/R	Voxels	T values
	x	y	z				
Medial Frontal Gyrus	15	66	-3	11/10	R	54	-5.2249
Superior Frontal Gyrus	-42	48	0	10/11/46	L	91	-4.6173
Middle Frontal Gyrus	-51	33	27	8/9/46	L	61	-5.0072
Inferior Frontal Gyrus	-51	36	0	10/45/46/47	L	62	-4.6245
Inferior Frontal Gyrus	51	15	0	22/45/47	R	141	-4.9034
Inferior Parietal Lobule	66	-48	24	39/40	R	156	-6.0926
Precentral Gyrus	36	-24	36	2/3/4/6	R	319	6.5118
Precentral Gyrus	-36	-12	57	1/2/3/4/6	L	652	10.0644
Middle Occipital Gyrus	-39	-87	0	18/19	L	413	6.7853

doi:10.1371/journal.pone.0120323.t001

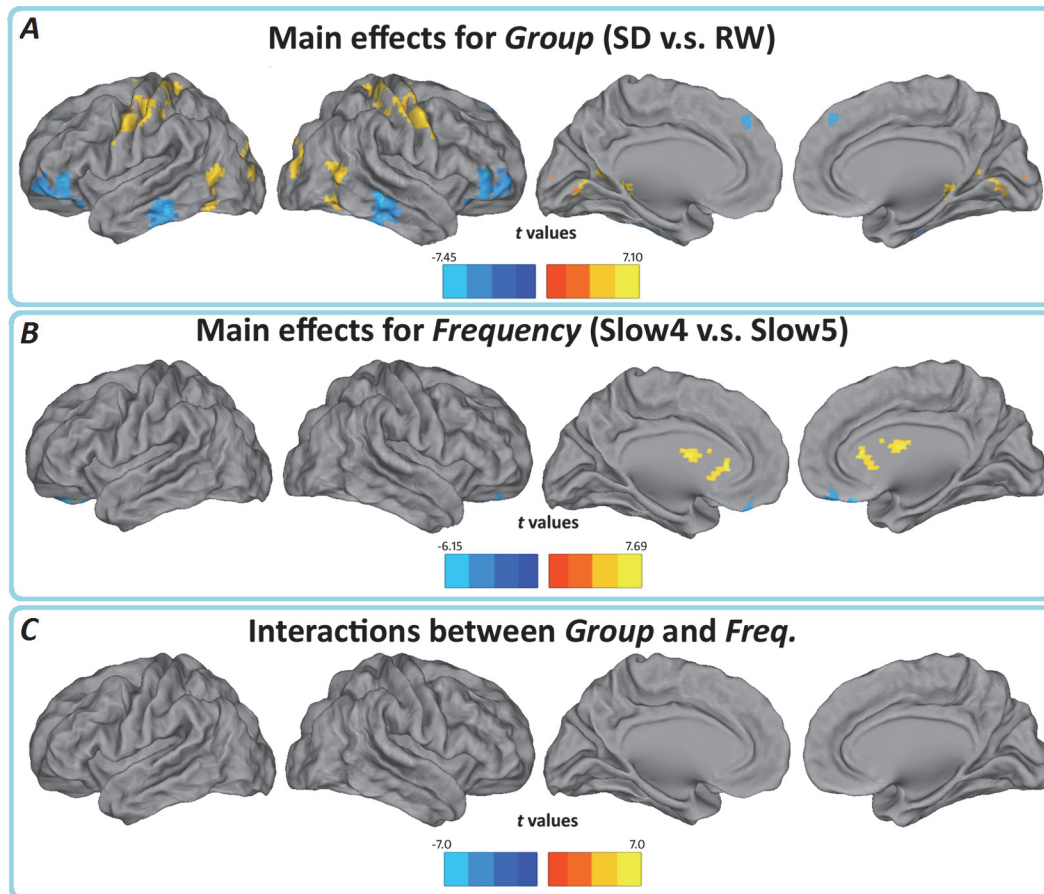


Fig 2. (A) Main effects for group, (B) frequency band, and (C) their interactions. Hot color represents higher ALFF in the SD group (Slow-4) than in the control group (Slow-5), whereas cool color represents lower ALFF. The results were obtained by a 2x2 repeated-measure ANOVA.

doi:10.1371/journal.pone.0120323.g002

bilateral thalamus, and caudate (basal ganglia) (Slow-4>Slow-5). There were no significant interactions between frequency band and different groups (Fig. 2). Further post-hoc t test reveals that the group differences in ALFF in the slow-4 band were greater than those in the slow-5 (Fig. 3, Table 2 and 3).

Correlations between ALFF and behavior variables in the SD group

To evaluate the relationship between ALFF and behavior variables in the SD group, we found that negative correlations of behavior performance and ALFF patterns appeared mainly in the right IPL across the typical frequency band (Fig. 4).

Discussion

We investigated the frequency-dependent effects of sleep deprivation on low frequency oscillations of BOLD signals measured by resting-state fMRI. 24 h sleep deprivation caused the decrease of ALFF in the bilateral OFC, bilateral DLPFC, and right IPL areas while the increase of ALFF in the left SMC, visual cortex and left FG areas. These changes were much more significant in Slow-4 frequency band. Behaviorally, 24h sleep deprivation significantly affected reaction time in the semantic task, and this change was also negatively correlated with decreased ALFF in the right IPL. These findings may offer SD-related frequency-dependent alterations in

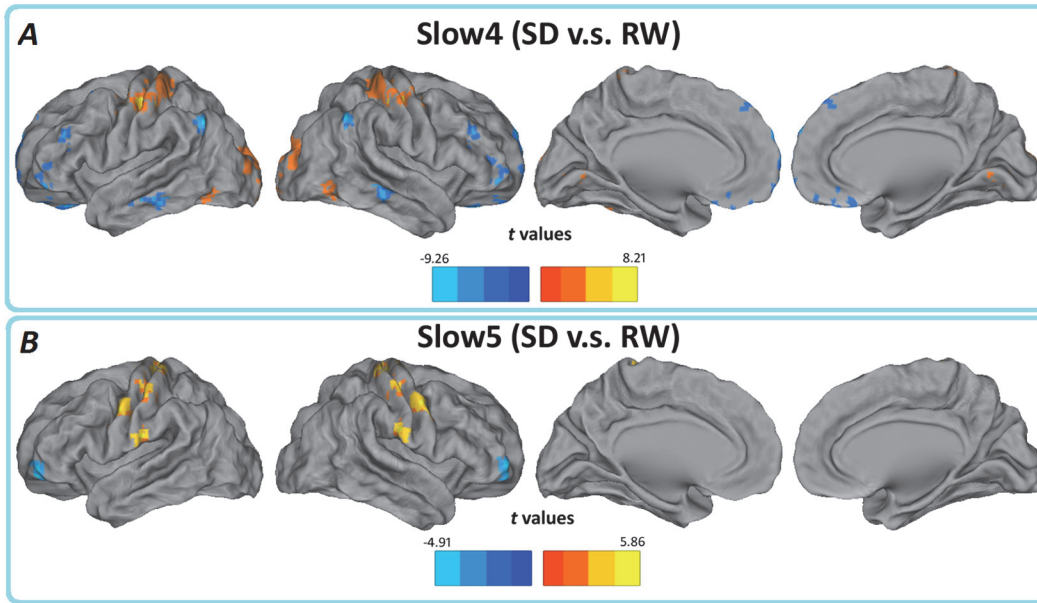


Fig 3. Paired t test for the (A) Slow-4 and (B) Slow-5 frequency band, $p < 0.05$, AlphaSim corrected. Cool color indicates that the SD group had decreased ALFF compared with the controls and the hot color indicates the opposite. Left in the figure indicates the left side of the brain.

doi:10.1371/journal.pone.0120323.g003

amplitude patterns and provide novel insights into understanding how ongoing spontaneous brain activity respond and compensate to prolonged wakefulness.

Electroencephalography (EEG) studies have found that sleep deprivation are associated with tonic decreases in EEG amplitude of spectral features associated with alertness [46,47,48], and also frequency-specific changes in brain networks [31]. Although there is still lack of consensus about the significances of different frequency bands (e.g. slow-4 and slow-5 frequency band) in BOLD signals, previous studies have indicated that amplitudes in the slow-4 were

Table 2. In the Slow-4 (0.027–0.073Hz), group ALFF differences at the given threshold ($p < 0.05$, AlphaSim corrected) were shown.

Brain regions	MNI coordinates			BA	L/R	Voxels	T values
	x	y	z				
Superior Frontal Gyrus	-9	48	51	6/8	L	257	-5.5499
Superior Frontal Gyrus	-15	60	21	9/10	L	130	-5.0127
Medial Frontal Gyrus	15	48	-24	11	R	69	-5.5202
Middle Frontal Gyrus	-48	36	27	9/46	L	90	-5.0586
Inferior Frontal Gyrus	-27	45	-15	11/47	L	90	-5.1374
Inferior Frontal Gyrus	51	15	3	13/38/22/45/47	R	209	-5.6583
Lingual Gyrus	21	-90	-3	17/18	L	111	4.1698
Angular Gyrus	42	-57	33	40	R	92	-5.137
Inferior Parietal Lobule	-54	-63	42	39/40	L	74	-9.2636
Postcentral Gyrus	-39	-21	51	2/3/4/6/40	L	504	8.2133
Middle Occipital Gyrus	-15	-93	9	18/19	L	204	4.0821
Superior Frontal Gyrus	-9	24	-15	11/47	L	351	-6.8423
Middle Frontal Gyrus	-42	42	-6	10/11	L	92	-3.984
Thalamus	21	-15	12	-	R	55	4.3722

doi:10.1371/journal.pone.0120323.t002

Table 3. In the Slow-5 (0.01–0.027 Hz), group ALFF differences at the given threshold ($p < 0.05$, AlphaSim corrected) were shown.

Brain regions	MNI coordinates			BA	L/R	Voxels	T values
	x	y	z				
Middle Frontal Gyrus	-39	51	-6	10/11	L	100	-4.9078
Postcentral Gyrus	-57	-21	21	3/4/6	L	395	5.8595

BA, Brodmann's area; **MNI**, Montreal Neurological Institute; x, y, z, coordinates of primary peak locations in the space of MNI; t, statistical value of peak voxel; $p < 0.01$, corrected for AlphaSim multiple comparisons.

doi:10.1371/journal.pone.0120323.t003

higher in the basal ganglia, thalamus and several sensorimotor regions while lower within the ventromedial regions [49]. We observed more significant changes of ALFF in the slow-4 band than that of in the typical frequency band, especially in the OFC, IPL, and VMPFC in a sleep-deprived brain. This can be interpreted that slow-4 band could be more sensitive in detecting changes of spontaneous brain activity in the OFC, IPL, and VMPFC for sleep-deprived brain. Previous study did not find the significant alternations of the DMN in the spectral power between the (0–0.1 Hz) and (0.1–0.25 Hz) frequency in the sleep-deprived brain [15]. One of main cause was derived from partial sleep deprivation by allowing 3.5 hours sleep, while the present study had much longer 24 hours sleep deprivation. On the other hand, they only focused on the DMN while we used the whole brain ALFF analysis.

Our results confirmed the functional alterations of resting state networks (RSNs) after sleep deprivation in previous studies [12,13,15]. It has been well established that intrinsic brain activity detectable by resting-state fMRI is organized into spatially distinct resting state networks (RSNs). Mapping these intrinsic connections constitutes a major goal of recent efforts to the human functional connectome [50]. Among these spontaneously synchronized neuronal networks, the “task-negative” (DMN) and its anticorrelated “task-positive” networks (ACN) [51,52] have received most attentions. One recent study found that insomniacs have increased insula coactivations within brain networks associated with salience and arousal, and may, in part, be explained as that chronic sleep loss put a burden on brain networks coordinating. Since a primary role of the salience network is proposed to enable switching between the DMN and ACN[53]. This dysfunctional integration within and between DMN-ACN is consistent

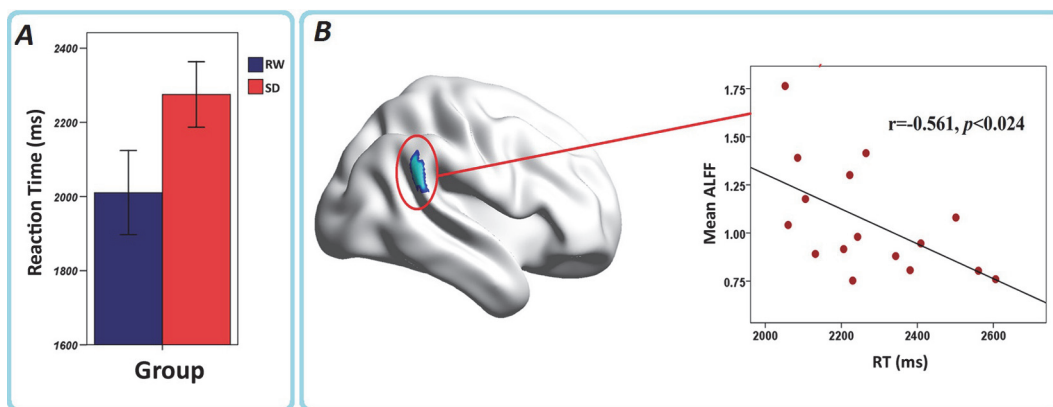


Fig 4. (A) Performance RTs for the RW (blue) and SD (red) sessions, and (B) the correlation between RTs and ALFF change in the right IPL in sleep deprivation group. The greater the prolongations in RT from rest to sleep deprivation, the greater the decrease in ALFF in right IPL. The results were visualized with the BrainNet Viewer (<http://www.nitrc.org/projects/bnv/>).

doi:10.1371/journal.pone.0120323.g004

with our findings. The DLPFC recruited the working memory tasks [54,55,56,57]. It becomes one of the “task-positive” regions (ACN) and has been implicated to be responsible for the failure in working memory for the sleep-deprived brain [51,54,55,56,57]. One recent study reported a reduced anti-correlation between the DMN and ACN nodes at both task-related and resting states [13]. An early PET study also found a global CMRglu decline and a relative decrease in these regions [58]. Despite lack of statistically significant correlations among behavior variables, the relatively decreased ALFF in the DLPFC after sleep deprivation may represent a decline in memory encoding, though it represents a recoverable process.

Our study also showed the decrease of ALFF signals in the bilateral OFC (BA 11/47) and right inferior parietal lobule (IPL, BA39/40) following 24h of sleep deprivation. These regions are main cores of the DMN [18] characterized by more energetic metabolic and neural activity at rest. These areas have been suggested as being engaged in internal spontaneous cognitive activity, including autobiographical memory retrieval and envisioning the future when individuals are not focusing on the external environment [18,51,59,60]. Alterations of these regions may be associated with the process of energy metabolism and cognitive operations after SD. A proposed function for sleep is brain energy restoration [61], and several studies find increased anabolic processes to the restorative biosynthetic courses occurring during sleep [62]. Sleep deprivation could be energetically costly due to increased energy expenditure for maintaining wakefulness. Regional hypometabolism in the prefrontal and parietal cortex often occurred after sleep deprivation [58,63,64]. The SD reduced not only resting metabolism but also functional connectivity in the VMPFC with the amygdala and other main cores of DMN [12,13,15,21]. The decreased volumes of gray matter in the OFC have been reported in patients with chronic sleep disorder [65,66] due to chronic sleep loss. The OFC, known as the limbic system, is thought to be responsible for mediating the interactions between emotional processes and cognitive functions [67,68]. This area is particularly vulnerable to sleep deprivation [69]. Damages to the OFC have similar effects that result from the sleep deprivation on decision making, though it is less severe [8,70,71]. It is also well established that SD has a therapeutic effect on depression [16,72]. Negative cognitive biases in depression are facilitated by increased influence from subcortical emotion processing regions combined with attenuated top-bottom cognitive controls [72]. Studies about depression has found increased functional connectivity between the VMPFC and other cores of DMN and increased ALFF in the frontal cortex [73]. However, our data did not reveal a significant correlation between the ALFF values in the OFC and the RT values in the SD group ($p = 0.73$). This may need more specific cognitive performances. The decreased regional activity in the OFC seems to be the most consistent alteration after one night of SD and represents maladaptive emotion regulation [12,68]. It has been found that functional changes in the parietal cortical regions may be the most reliable neural features of an individual’s response to sleep deprivation [2,13]. The changes of IPL within the DMN are consistently impaired and may represent an early marker for the effects of sleep deprivation [13]. Our study also found that the decreased ALFF in the IPL was frequency-dependent—low ALFF on the right side across the typical frequency band (0.01–0.08Hz) in contrast to much higher ALFF on the both side (especially in the left side) across the slow-4 frequency band. Moreover, there is a significant negative linear correlation between the ALFF changes in the right IPL and reaction time for cognitive performance, and it was notioned that activity changes in the IPL may reflect an imaging marker for sleep deprivation. Together, the decreased ALFF in these key DMN regions may be dependent on prior sleep, sleep deprivation may disrupt the amplitude patterns of brain oscillatory activity, offer novel insights into spontaneous brain activity associated with sleep loss both cognitively and emotionally.

One interesting finding was the increased ALFF in the left SMC, visual cortex and left FG after sleep deprivation. It is unclear whether such increase simply imply an increased LFF

activity or a rise overall variance in the ambient BOLD activity (reflective of higher metabolic activity) in the SD. To clarify this issue, we further measured the regional LFF changes by examining regional coherence in the typical frequency band. Regional coherence was assessed using regional homogeneity (ReHo) method [45]. Briefly, ReHo measures the temporal synchronization of the time series of nearest neighbors (for detail, see [45]). A paired-t test was carried out on group ReHo map in a voxel-wise way. We found that the SD group also showed significantly increased ReHo in the SMC. Using a series of addition/subtraction tasks, previous PET study find that sleep deprivation changed the waking cerebral metabolic rate for glucose (CMR_{glu}) with the regional relative increases in the visual cortex [63], left SMC, lateral superior occipital cortices, lingual and FG [64]. These changes were much greater after 48 and 72 h than that of after 24 h SD [58]. Furthermore, these regions are consistent with previous findings of increased activation in sleep deprivation during the performance of cognitive task [74]. They proposed that the increased activations implicated the brain's exertion of voluntary control to remain awake and performance [74]. The FG and visual cortex are involved in memory process [74], and we speculated that increases in these regions may reflect the compensatory recruitment though this conclusion needs further clarifications. The recruitment of increased brain regions may reflect an attempt to sustain alertness and cognitive performance despite a continuing decline in the prefrontal-parietal activity.

Limitations

There are several limitations in this study. Firstly, a relatively small sample, the statistical power lowers and limited, so the results can hardly survive a strict multiple comparison correction (e.g. FDR or FWE correction). Future studies could use a larger sample size to increase the statistical power of the study. Secondly, lack of objective assessment of sleep quality and daytime sleepiness. Although none of our participants had self-reported sleep disorder, an elusive impact of sleep habits on intrinsic brain activity cannot be excluded. However, the impact would be very limited.

Conclusion

Using ALFF as an index of regional intrinsic brain activity in resting-state, we find that 24h sleep deprivation leads to altered regional activity in the DMN and ACN. The decreased ALFF emerged mainly in the OFC, DLPFC and IPL while increased ALFF in the left FG, visual cortex and SMC. These regions are consistent with previous findings from cognitive tasks explained in terms of a cognitive impairment, maladaptive emotion regulation and compensatory recruitment hypothesis. Further, the alterations of ALFF are more significant in the Slow-4 frequency band in contrast to the typical frequency band. Our results highlighted sleep deprivation can induce frequency-dependent brain oscillatory activity changes. These findings may provide insights into the understanding of the maladaptive process of sleep deprivation and of how ongoing spontaneous brain activity respond and compensate to sleep deprivation.

Supporting Information

S1 Fig. Main effects for group and frequency band. Hot color represents higher ALFF in the SD group (Slow-4) than in the control group (Slow-5), whereas cool color represents lower ALFF. The results were obtained by a 2×2 repeated-measure ANOVA. (TIF)

S2 Fig. Paired t test for the Typical, Slow-4 and Slow-5 frequency band, $p < 0.05$, AlphaSim corrected. Cool color indicates that the SD group had decreased ALFF compared with the

controls and the hot color indicates the opposite. Left in the figure indicates the left side of the brain.
(TIF)

Acknowledgments

We thank Hengyi Rao (Department of Neurology, University of Pennsylvania) for the valuable discussions about the research findings. This study was supported by the National Natural Science Foundation of China (Grant No. 81371630, 81260217, and 81371530.), the Fundamental Research Funds for the Central Universities, the Beijing Nova program (Grant No. Z111101054511116), and the Beijing Natural Science Foundation (Grant No. 4122082).

Author Contributions

Conceived and designed the experiments: HHG MZ LJB LG XJD YJM FQZ. Performed the experiments: LG XJD FQZ YJM YCZ. Analyzed the data: LG. Contributed reagents/materials/analysis tools: LG YJM XJD FQZ CN WHD RN. Wrote the paper: LG LJB RN MZ HHG.

References

1. Born J, Feld GB (2012) Sleep to upscale, sleep to downscale: balancing homeostasis and plasticity. *Neuron* 75: 933–935. doi: [10.1016/j.neuron.2012.09.007](https://doi.org/10.1016/j.neuron.2012.09.007) PMID: [22998858](https://pubmed.ncbi.nlm.nih.gov/22998858/)
2. Chee MWL, Chuah LYM (2008) Functional neuroimaging insights into how sleep and sleep deprivation affect memory and cognition. *Current opinion in neurology* 21: 417. doi: [10.1097/WCO.0b013e3283052cf7](https://doi.org/10.1097/WCO.0b013e3283052cf7) PMID: [18607201](https://pubmed.ncbi.nlm.nih.gov/18607201/)
3. Chee MWL, Chuah YML (2007) Functional neuroimaging and behavioral correlates of capacity decline in visual short-term memory after sleep deprivation. *Proceedings of the National Academy of Sciences* 104: 9487–9492. PMID: [17517619](https://pubmed.ncbi.nlm.nih.gov/17517619/)
4. Chee MWL, Choo WC (2004) Functional imaging of working memory after 24 hr of total sleep deprivation. *The Journal of Neuroscience* 24: 4560–4567. PMID: [15140927](https://pubmed.ncbi.nlm.nih.gov/15140927/)
5. Lim J, Dinges DF (2008) Sleep deprivation and vigilant attention. *Annals of the New York Academy of Sciences* 1129: 305–322. doi: [10.1196/annals.1417.002](https://doi.org/10.1196/annals.1417.002) PMID: [18591490](https://pubmed.ncbi.nlm.nih.gov/18591490/)
6. Tomasi D, Wang RL, Telang F, Boronikolas V, Jayne MC, Wang GJ, et al. (2009) Impairment of attentional networks after 1 night of sleep deprivation. *Cereb Cortex* 19: 233–240. doi: [10.1093/cercor/bhn073](https://doi.org/10.1093/cercor/bhn073) PMID: [18483003](https://pubmed.ncbi.nlm.nih.gov/18483003/)
7. Menz MM, Buchel C, Peters J (2012) Sleep Deprivation Is Associated with Attenuated Parametric Valuation and Control Signals in the Midbrain during Value-Based Decision Making. *J Neurosci* 32: 6937–6946. doi: [10.1523/JNEUROSCI.3553-11.2012](https://doi.org/10.1523/JNEUROSCI.3553-11.2012) PMID: [22593062](https://pubmed.ncbi.nlm.nih.gov/22593062/)
8. Venkatraman V, Huettel SA, Chuah LY, Payne JW, Chee MW (2011) Sleep deprivation biases the neural mechanisms underlying economic preferences. *J Neurosci* 31: 3712–3718. doi: [10.1523/JNEUROSCI.4407-10.2011](https://doi.org/10.1523/JNEUROSCI.4407-10.2011) PMID: [21389226](https://pubmed.ncbi.nlm.nih.gov/21389226/)
9. Kong D, Asplund CL, Chee MW (2014) Sleep deprivation reduces the rate of rapid picture processing. *Neuroimage* 91C: 169–176. doi: [10.12968/hmed.2014.75.Sup11.C169](https://doi.org/10.12968/hmed.2014.75.Sup11.C169) PMID: [25381862](https://pubmed.ncbi.nlm.nih.gov/25381862/)
10. Motomura Y, Kitamura S, Oba K, Terasawa Y, Enomoto M, Katayose Y, et al. (2013) Sleep debt elicits negative emotional reaction through diminished amygdala-anterior cingulate functional connectivity. *PLoS One* 8: e56578. doi: [10.1371/journal.pone.0056578](https://doi.org/10.1371/journal.pone.0056578) PMID: [23418586](https://pubmed.ncbi.nlm.nih.gov/23418586/)
11. Mullin BC, Phillips ML, Siegle GJ, Buysse DJ, Forbes EE, Franzen PL (2013) Sleep deprivation amplifies striatal activation to monetary reward. *Psychol Med* 43: 2215–2225. doi: [10.1017/S0033291712002875](https://doi.org/10.1017/S0033291712002875) PMID: [23286303](https://pubmed.ncbi.nlm.nih.gov/23286303/)
12. Gujar N, Yoo SS, Hu P, Walker MP (2010) The unrested resting brain: sleep deprivation alters activity within the default-mode network. *J Cogn Neurosci* 22: 1637–1648. doi: [10.1162/jocn.2009.21331](https://doi.org/10.1162/jocn.2009.21331) PMID: [19702469](https://pubmed.ncbi.nlm.nih.gov/19702469/)
13. De Havas JA, Parimal S, Soon CS, Chee MWL (2012) Sleep deprivation reduces default mode network connectivity and anti-correlation during rest and task performance. *Neuroimage* 59: 1745–1751. doi: [10.1016/j.neuroimage.2011.08.026](https://doi.org/10.1016/j.neuroimage.2011.08.026) PMID: [21872664](https://pubmed.ncbi.nlm.nih.gov/21872664/)

14. Jiao Q, Ding J, Lu G, Su L, Zhang Z, Wang Z, et al. (2011) Increased activity imbalance in fronto-subcortical circuits in adolescents with major depression. *PLoS One* 6: e25159. doi: [10.1371/journal.pone.0025159](https://doi.org/10.1371/journal.pone.0025159) PMID: [21949877](https://pubmed.ncbi.nlm.nih.gov/21949877/)
15. Samann PG, Tully C, Spoormaker VI, Wetter TC, Holsboer F, Wehrle R, et al. (2010) Increased sleep pressure reduces resting state functional connectivity. *MAGMA* 23: 375–389. doi: [10.1007/s10334-010-0213-z](https://doi.org/10.1007/s10334-010-0213-z) PMID: [20473549](https://pubmed.ncbi.nlm.nih.gov/20473549/)
16. Bosch OG, Rihm JS, Scheidegger M, Landolt HP, Stampfli P, Brakowski J, et al. (2013) Sleep deprivation increases dorsal nexus connectivity to the dorsolateral prefrontal cortex in humans. *Proc Natl Acad Sci U S A* 110: 19597–19602. doi: [10.1073/pnas.1317010110](https://doi.org/10.1073/pnas.1317010110) PMID: [24218598](https://pubmed.ncbi.nlm.nih.gov/24218598/)
17. Shao Y, Wang L, Ye E, Jin X, Ni W, Yang Y, et al. (2013) Decreased thalamocortical functional connectivity after 36 hours of total sleep deprivation: evidence from resting state fMRI. *PLoS One* 8: e78830. doi: [10.1371/journal.pone.0078830](https://doi.org/10.1371/journal.pone.0078830) PMID: [24205327](https://pubmed.ncbi.nlm.nih.gov/24205327/)
18. Raichle ME, MacLeod AM, Snyder AZ, Powers WJ, Gusnard DA, Shulman GL (2001) A default mode of brain function. *Proc Natl Acad Sci U S A* 98: 676–682. PMID: [11209064](https://pubmed.ncbi.nlm.nih.gov/11209064/)
19. Anticevic A, Cole MW, Murray JD, Corlett PR, Wang XJ, Krystal JH (2012) The role of default network deactivation in cognition and disease. *Trends Cogn Sci* 16: 584–592. doi: [10.1016/j.tics.2012.10.008](https://doi.org/10.1016/j.tics.2012.10.008) PMID: [23142417](https://pubmed.ncbi.nlm.nih.gov/23142417/)
20. Piantoni G, Cheung BL, Van Veen BD, Romeijn N, Riedner BA, Tononi G, et al. (2013) Disrupted directed connectivity along the cingulate cortex determines vigilance after sleep deprivation. *Neuroimage* 79: 213–222. doi: [10.1016/j.neuroimage.2013.04.103](https://doi.org/10.1016/j.neuroimage.2013.04.103) PMID: [23643925](https://pubmed.ncbi.nlm.nih.gov/23643925/)
21. Yoo SS, Gujar N, Hu P, Jolesz FA, Walker MP (2007) The human emotional brain without sleep—a prefrontal amygdala disconnect. *Current Biology* 17: R877–R878. PMID: [17956744](https://pubmed.ncbi.nlm.nih.gov/17956744/)
22. Picchioni D, Duyn JH, Horowitz SG (2013) Sleep and the functional connectome. *Neuroimage* 80: 387–396. doi: [10.1016/j.neuroimage.2013.05.067](https://doi.org/10.1016/j.neuroimage.2013.05.067) PMID: [23707592](https://pubmed.ncbi.nlm.nih.gov/23707592/)
23. Baria AT, Baliki MN, Parrish T, Apkarian AV (2011) Anatomical and functional assemblies of brain BOLD oscillations. *J Neurosci* 31: 7910–7919. doi: [10.1523/JNEUROSCI.1296-11.2011](https://doi.org/10.1523/JNEUROSCI.1296-11.2011) PMID: [21613505](https://pubmed.ncbi.nlm.nih.gov/21613505/)
24. Zuo XN, Di Martino A, Kelly C, Shehzad ZE, Gee DG, Klein DF, et al. (2010) The oscillating brain: complex and reliable. *Neuroimage* 49: 1432–1445. doi: [10.1016/j.neuroimage.2009.09.037](https://doi.org/10.1016/j.neuroimage.2009.09.037) PMID: [19782143](https://pubmed.ncbi.nlm.nih.gov/19782143/)
25. Song X, Zhang Y, Liu Y (2014) Frequency specificity of regional homogeneity in the resting-state human brain. *PLoS One* 9: e86818. doi: [10.1371/journal.pone.0086818](https://doi.org/10.1371/journal.pone.0086818) PMID: [24466256](https://pubmed.ncbi.nlm.nih.gov/24466256/)
26. Baliki MN, Baria AT, Apkarian AV (2011) The cortical rhythms of chronic back pain. *The Journal of Neuroscience* 31: 13981–13990. doi: [10.1523/JNEUROSCI.1984-11.2011](https://doi.org/10.1523/JNEUROSCI.1984-11.2011) PMID: [21957259](https://pubmed.ncbi.nlm.nih.gov/21957259/)
27. Han Y, Wang J, Zhao Z, Min B, Lu J, Li K, et al. (2011) Frequency-dependent changes in the amplitude of low-frequency fluctuations in amnesic mild cognitive impairment: a resting-state fMRI study. *Neuroimage* 55: 287–295. doi: [10.1016/j.neuroimage.2010.11.059](https://doi.org/10.1016/j.neuroimage.2010.11.059) PMID: [21118724](https://pubmed.ncbi.nlm.nih.gov/21118724/)
28. Hoptman MJ, Zuo XN, Butler PD, Javitt DC, D'Angelo D, Mauro CJ, et al. (2010) Amplitude of low-frequency oscillations in schizophrenia: a resting state fMRI study. *Schizophr Res* 117: 13–20. doi: [10.1016/j.schres.2009.09.030](https://doi.org/10.1016/j.schres.2009.09.030) PMID: [19854028](https://pubmed.ncbi.nlm.nih.gov/19854028/)
29. Wei L, Duan X, Zheng C, Wang S, Gao Q, Zhang Z, et al. (2014) Specific frequency bands of amplitude low-frequency oscillation encodes personality. *Hum Brain Mapp* 35: 331–339. doi: [10.1002/hbm.22176](https://doi.org/10.1002/hbm.22176) PMID: [22987723](https://pubmed.ncbi.nlm.nih.gov/22987723/)
30. Yu R, Chien YL, Wang HL, Liu CM, Liu CC, Hwang TJ, et al. (2014) Frequency-specific alternations in the amplitude of low-frequency fluctuations in schizophrenia. *Hum Brain Mapp* 35: 627–637. doi: [10.1002/hbm.22203](https://doi.org/10.1002/hbm.22203) PMID: [23125131](https://pubmed.ncbi.nlm.nih.gov/23125131/)
31. Koenis MM, Romeijn N, Piantoni G, Verweij I, Van der Werf YD, Van Someren EJ, et al. (2013) Does sleep restore the topology of functional brain networks? *Hum Brain Mapp* 34: 487–500. doi: [10.1002/hbm.21455](https://doi.org/10.1002/hbm.21455) PMID: [22076871](https://pubmed.ncbi.nlm.nih.gov/22076871/)
32. Knoblauch V, Krauchi K, Renz C, Wirz-Justice A, Cajochen C (2002) Homeostatic control of slow-wave and spindle frequency activity during human sleep: effect of differential sleep pressure and brain topography. *Cereb Cortex* 12: 1092–1100. PMID: [12217973](https://pubmed.ncbi.nlm.nih.gov/12217973/)
33. Olbrich E, Landolt HP, Achermann P (2013) Effect of prolonged wakefulness on electroencephalographic oscillatory activity during sleep. *J Sleep Res*.
34. Yan CG, Craddock RC, Zuo XN, Zang YF, Milham MP (2013) Standardizing the intrinsic brain: towards robust measurement of inter-individual variation in 1000 functional connectomes. *Neuroimage* 80: 246–262. doi: [10.1016/j.neuroimage.2013.04.081](https://doi.org/10.1016/j.neuroimage.2013.04.081) PMID: [23631983](https://pubmed.ncbi.nlm.nih.gov/23631983/)
35. Zang YF, He Y, Zhu CZ, Cao QJ, Sui MQ, Liang M, et al. (2007) Altered baseline brain activity in children with ADHD revealed by resting-state functional MRI. *Brain Dev* 29: 83–91. PMID: [16919409](https://pubmed.ncbi.nlm.nih.gov/16919409/)

36. Abou EA, Nissila J, Liettu A, Remes J, Jokelainen J, Takala T, et al. (2014) Altered resting-state activity in seasonal affective disorder. *Hum Brain Mapp* 35: 161–172. doi: [10.1002/hbm.22164](https://doi.org/10.1002/hbm.22164) PMID: [22987670](https://pubmed.ncbi.nlm.nih.gov/22987670/)
37. Buysse DJ, Reynolds CR, Monk TH, Berman SR, Kupfer DJ (1989) The Pittsburgh Sleep Quality Index: a new instrument for psychiatric practice and research. *Psychiatry Res* 28: 193–213. PMID: [2748771](https://pubmed.ncbi.nlm.nih.gov/2748771/)
38. Johns MW (1991) A new method for measuring daytime sleepiness: the Epworth sleepiness scale. *Sleep* 14: 540–545. PMID: [1798888](https://pubmed.ncbi.nlm.nih.gov/1798888/)
39. Forster KI, Forster JC (2003) DMDX: A Windows display program with millisecond accuracy. *Behavior Research Methods* 35: 116–124. PMID: [12723786](https://pubmed.ncbi.nlm.nih.gov/12723786/)
40. Power JD, Barnes KA, Snyder AZ, Schlaggar BL, Petersen SE (2012) Spurious but systematic correlations in functional connectivity MRI networks arise from subject motion. *Neuroimage* 59: 2142–2154. doi: [10.1016/j.neuroimage.2011.10.018](https://doi.org/10.1016/j.neuroimage.2011.10.018) PMID: [22019881](https://pubmed.ncbi.nlm.nih.gov/22019881/)
41. Van Dijk KR, Sabuncu MR, Buckner RL (2012) The influence of head motion on intrinsic functional connectivity MRI. *Neuroimage* 59: 431–438. doi: [10.1016/j.neuroimage.2011.07.044](https://doi.org/10.1016/j.neuroimage.2011.07.044) PMID: [21810475](https://pubmed.ncbi.nlm.nih.gov/21810475/)
42. Yan CG, Cheung B, Kelly C, Colcombe S, Craddock RC, Di Martino A, et al. (2013) A comprehensive assessment of regional variation in the impact of head micromovements on functional connectomics. *Neuroimage* 76: 183–201. doi: [10.1016/j.neuroimage.2013.03.004](https://doi.org/10.1016/j.neuroimage.2013.03.004) PMID: [23499792](https://pubmed.ncbi.nlm.nih.gov/23499792/)
43. Satterthwaite TD, Elliott MA, Gerraty RT, Ruparel K, Loughhead J, Calkins ME, et al. (2013) An improved framework for confound regression and filtering for control of motion artifact in the preprocessing of resting-state functional connectivity data. *Neuroimage* 64: 240–256. doi: [10.1016/j.neuroimage.2012.08.052](https://doi.org/10.1016/j.neuroimage.2012.08.052) PMID: [22926292](https://pubmed.ncbi.nlm.nih.gov/22926292/)
44. Chao-Gan Y, Yu-Feng Z (2010) DPARSF: A MATLAB Toolbox for "Pipeline" Data Analysis of Resting-State fMRI. *Front Syst Neurosci* 4: 13. doi: [10.3389/fnsys.2010.00013](https://doi.org/10.3389/fnsys.2010.00013) PMID: [20577591](https://pubmed.ncbi.nlm.nih.gov/20577591/)
45. Zang Y, Jiang T, Lu Y, He Y, Tian L (2004) Regional homogeneity approach to fMRI data analysis. *Neuroimage* 22: 394–400. PMID: [15110032](https://pubmed.ncbi.nlm.nih.gov/15110032/)
46. Gevins A, Smith ME, McEvoy L, Yu D (1997) High-resolution EEG mapping of cortical activation related to working memory: effects of task difficulty, type of processing, and practice. *Cereb Cortex* 7: 374–385. PMID: [9177767](https://pubmed.ncbi.nlm.nih.gov/9177767/)
47. Gevins A, Smith ME, Leong H, McEvoy L, Whitfield S, Du R, et al. (1998) Monitoring working memory load during computer-based tasks with EEG pattern recognition methods. *Hum Factors* 40: 79–91. PMID: [9579105](https://pubmed.ncbi.nlm.nih.gov/9579105/)
48. Smith ME, McEvoy LK, Gevins A (1999) Neurophysiological indices of strategy development and skill acquisition. *Brain Res Cogn Brain Res* 7: 389–404. PMID: [9838200](https://pubmed.ncbi.nlm.nih.gov/9838200/)
49. Zuo XN, Di Martino A, Kelly C, Shehzad ZE, Gee DG, Klein DF, et al. (2010) The oscillating brain: complex and reliable. *Neuroimage* 49: 1432–1445. doi: [10.1016/j.neuroimage.2009.09.037](https://doi.org/10.1016/j.neuroimage.2009.09.037) PMID: [19782143](https://pubmed.ncbi.nlm.nih.gov/19782143/)
50. Biswal BB, Mennes M, Zuo XN, Gohel S, Kelly C, Smith SM, et al. (2010) Toward discovery science of human brain function. *Proc Natl Acad Sci U S A* 107: 4734–4739. doi: [10.1073/pnas.0911855107](https://doi.org/10.1073/pnas.0911855107) PMID: [20176931](https://pubmed.ncbi.nlm.nih.gov/20176931/)
51. Fox MD, Snyder AZ, Vincent JL, Corbetta M, Van Essen DC, Raichle ME (2005) The human brain is intrinsically organized into dynamic, anticorrelated functional networks. *Proc Natl Acad Sci U S A* 102: 9673–9678. PMID: [15976020](https://pubmed.ncbi.nlm.nih.gov/15976020/)
52. Raichle ME (2011) The restless brain. *Brain Connect* 1: 3–12. doi: [10.1089/brain.2011.0019](https://doi.org/10.1089/brain.2011.0019) PMID: [22432951](https://pubmed.ncbi.nlm.nih.gov/22432951/)
53. Menon V, Uddin LQ (2010) Saliency, switching, attention and control: a network model of insula function. *Brain Struct Funct* 214: 655–667. doi: [10.1007/s00429-010-0262-0](https://doi.org/10.1007/s00429-010-0262-0) PMID: [20512370](https://pubmed.ncbi.nlm.nih.gov/20512370/)
54. Chuah YML, Venkatraman V, Dinges DF, Chee MWL (2006) The neural basis of interindividual variability in inhibitory efficiency after sleep deprivation. *The Journal of Neuroscience* 26: 7156–7162. PMID: [16822972](https://pubmed.ncbi.nlm.nih.gov/16822972/)
55. Drummond SPA, Bischoff-Grethe A, Dinges DF, Ayalon L, Mednick SC, Meloy MJ, et al. (2005) The neural basis of the psychomotor vigilance task. *SLEEP-NEW YORK THEN WESTCHESTER-* 28: 1059.
56. Lawrence NS, Ross TJ, Hoffmann R, Garavan H, Stein EA (2003) Multiple neuronal networks mediate sustained attention. *Journal of Cognitive Neuroscience* 15: 1028–1038. PMID: [14614813](https://pubmed.ncbi.nlm.nih.gov/14614813/)
57. Yamasaki H, LaBar KS, McCarthy G (2002) Dissociable prefrontal brain systems for attention and emotion. *Proceedings of the National Academy of Sciences* 99: 11447–11451. PMID: [12177452](https://pubmed.ncbi.nlm.nih.gov/12177452/)

58. Thomas M, Sing H, Belenky G, Holcomb H, Mayberg H, Dannals R, et al. (2000) Neural basis of alertness and cognitive performance impairments during sleepiness. I. Effects of 24 h of sleep deprivation on waking human regional brain activity. *J Sleep Res* 9: 335–352. PMID: [11123521](#)
59. Raichle ME (2011) The restless brain. *Brain Connect* 1: 3–12. doi: [10.1089/brain.2011.0019](#) PMID: [22432951](#)
60. Uddin LQ, Kelly AM, Biswal BB, Castellanos FX, Milham MP (2009) Functional connectivity of default mode network components: correlation, anticorrelation, and causality. *Hum Brain Mapp* 30: 625–637. doi: [10.1002/hbm.20531](#) PMID: [18219617](#)
61. Benington JH, Heller HC (1995) Restoration of brain energy metabolism as the function of sleep. *Prog Neurobiol* 45: 347–360. PMID: [7624482](#)
62. Dworak M, McCarley RW, Kim T, Kalinchuk AV, Basheer R (2010) Sleep and brain energy levels: ATP changes during sleep. *J Neurosci* 30: 9007–9016. doi: [10.1523/JNEUROSCI.1423-10.2010](#) PMID: [20592221](#)
63. Wu JC, Gillin JC, Buchsbaum MS, Hershey T, Hazlett E, Sicotte N, et al. (1991) The effect of sleep deprivation on cerebral glucose metabolic rate in normal humans assessed with positron emission tomography. *Sleep* 14: 155–162. PMID: [1866529](#)
64. Thomas ML, Sing HC, Belenky G, Holcomb HH, Mayberg HS, Dannals RF, et al. (2003) Neural basis of alertness and cognitive performance impairments during sleepiness II. Effects of 48 and 72 h of sleep deprivation on waking human regional brain activity. *Thalamus & Related Systems* 2: 199–229.
65. Killgore WDS, Schwab ZJ, Kipman M, DelDonno SR, Weber M (2012) Voxel-based morphometric gray matter correlates of daytime sleepiness. *Neuroscience Letters* 518: 10–13. doi: [10.1016/j.neulet.2012.04.029](#) PMID: [22542893](#)
66. Altena E, Vrenken H, Van Der Werf YD, van den Heuvel OA, Van Someren EJ (2010) Reduced orbito-frontal and parietal gray matter in chronic insomnia: a voxel-based morphometric study. *Biol Psychiatry* 67: 182–185. doi: [10.1016/j.biopsych.2009.08.003](#) PMID: [19782344](#)
67. Etkin A, Egner T, Kalisch R (2011) Emotional processing in anterior cingulate and medial prefrontal cortex. *Trends Cogn Sci* 15: 85–93. doi: [10.1016/j.tics.2010.11.004](#) PMID: [21167765](#)
68. Libedinsky C, Smith DV, Teng CS, Namburi P, Chen VW, Huettel SA, et al. (2011) Sleep deprivation alters valuation signals in the ventromedial prefrontal cortex. *Front Behav Neurosci* 5: 70. doi: [10.3389/fnbeh.2011.00070](#) PMID: [22028686](#)
69. Goel N, Rao H, Durmer JS, Dinges DF (2009) Neurocognitive consequences of sleep deprivation. *Semin Neurol* 29: 320–339. doi: [10.1055/s-0029-1237117](#) PMID: [19742409](#)
70. Gujar N, Yoo SS, Hu P, Walker MP (2011) Sleep deprivation amplifies reactivity of brain reward networks, biasing the appraisal of positive emotional experiences. *J Neurosci* 31: 4466–4474. doi: [10.1523/JNEUROSCI.3220-10.2011](#) PMID: [21430147](#)
71. Venkatraman V, Chuah YML, Huettel SA, Chee MWL, Others (2007) Sleep deprivation elevates expectation of gains and attenuates response to losses following risky decisions. *SLEEP-NEW YORK THEN WESTCHESTER* 30: 603.
72. Disner SG, Beevers CG, Haigh EAP, Beck AT (2011) Neural mechanisms of the cognitive model of depression. *Nature Reviews Neuroscience* 12: 467–477. doi: [10.1038/nrn3027](#) PMID: [21731066](#)
73. Hasler G, Northoff G (2011) Discovering imaging endophenotypes for major depression. *Molecular psychiatry* 16: 604–619. doi: [10.1038/mp.2011.23](#) PMID: [21602829](#)
74. Tallon-Baudry C, Bertrand O, H E Naff MA, Isnard J, Fischer C (2005) Attention modulates gamma-band oscillations differently in the human lateral occipital cortex and fusiform gyrus. *Cerebral Cortex* 15: 654–662. PMID: [15371290](#)