

# Association of apolipoproteins C-I, C-II, C-III and E with coagulation markers and venous thromboembolism risk

This article was published in the following Dove Press journal:  
*Clinical Epidemiology*

Fernanda A Orsi<sup>1,2</sup>  
Willem M Lijfering<sup>2,3</sup>  
Arnoud Van der Laarse<sup>4,5</sup>  
L Renee Ruhaak<sup>4</sup>  
Frits R Rosendaal<sup>2</sup>  
Suzanne C Cannegieter<sup>2,3,6</sup>  
Christa Cobbaert<sup>4</sup>

<sup>1</sup>Department of Clinical Pathology, School of Medical Sciences, University of Campinas (UNICAMP), Campinas, Brazil;

<sup>2</sup>Department of Clinical Epidemiology, Leiden University Medical Center, Leiden, The Netherlands; <sup>3</sup>Eindhoven Laboratory for Experimental Vascular Medicine, Leiden University Medical Center, Leiden, The Netherlands; <sup>4</sup>Department of Clinical Chemistry and Laboratory Medicine, Leiden University Medical Center, Leiden, The Netherlands;

<sup>5</sup>Department of Cardiology, Leiden University Medical Center, Leiden, The Netherlands; <sup>6</sup>Department of Internal Medicine, Section of Thrombosis and Hemostasis, Leiden University Medical Center, Leiden, The Netherlands

**Purpose:** Apolipoproteins C-I, C-II, C-III and E have been associated with risk of arterial thrombotic diseases. We investigated whether these apolipoproteins have prothrombotic properties and are associated with risk of venous thromboembolism (VTE).

**Patients and methods:** A total of 127 VTE patients and 299 controls were randomly selected from the Multiple Environmental and Genetic Assessment of Risk Factors for Venous Thrombosis study (1999–2004), in the Netherlands. The apolipoproteins were quantified using mass spectrometry (LC/MS/MS), and their levels were analyzed as continuous variable (per SD increase).

**Results:** In controls, increases in levels of apolipoproteins were associated with increases in levels of vitamin K-dependent factors, factor XI, antithrombin and clot lysis time. Additionally, increasing apolipoproteins C-III and E levels were associated with higher factor VIII and von Willebrand factor levels. Levels of C-reactive protein were not associated with any apolipoprotein. The age- and sex-adjusted odds ratios of apolipoproteins E, C-III, CII and CI to the risk of venous thrombosis were 1.21 (95% CI, 0.98–1.49), 1.19 (95% CI, 0.99–1.44), 1.24 (95% CI, 0.95–1.61) and 1.06 (95% CI, 0.87–1.30) per SD increase, respectively. These odds ratios did not attenuate after adjustments for statin use, estrogen use, BMI, alcohol use, and self-reported diabetes.

**Conclusions:** Levels of apolipoproteins C-I, C-II, C-III and E are associated with those of several coagulation factors. However, whether these apolipoproteins are also associated with an increased risk of VTE remains to be established.

**Keywords:** thrombosis, proteomics, lipids, cholesterol, coagulation, risk factors

## Introduction

Venous thromboembolism (VTE) and arterial thrombosis are distinct diseases linked by several clinical aspects. Patients with VTE have a 1.6- to 3-fold increase in the risk of subsequent arterial cardiovascular events,<sup>1,2</sup> and drugs such as aspirin and statins prevent the occurrence of both arterial and venous thrombosis.<sup>3–5</sup> Furthermore, the two diseases share risk factors, such as age, sex, lifestyle and body mass index (BMI).<sup>6–8</sup>

Disorders of lipid metabolism are risk factors for arterial thrombosis that can potentially play a role in the risk of VTE, as these disorders affect hemostasis and lead to a hypercoagulable state.<sup>9,10</sup> However, an association between lipid disorders and VTE has not been confirmed so far. Lipid levels were not associated with a risk of VTE in several clinical studies,<sup>6,11,12</sup> and a relationship between apolipoproteins

Correspondence: Suzanne C Cannegieter  
Department of Clinical Epidemiology,  
Leiden University Medical Centre, PO  
Box 9600, Leiden 2300 RC, The  
Netherlands  
Tel +31 71 5264037  
Fax +31 71 5266994  
Email s.c.cannegieter@lumc.nl

(apo) and VTE risk remains controversial.<sup>11,13–16</sup> Although higher levels of apoB and lower levels of apoA-I were reported to increase the risk for VTE in selected populations,<sup>14,16</sup> these observations were not confirmed in larger cohorts.<sup>11,13</sup> A recent report from a large, unselected population has demonstrated that decreasing levels of apoA-I and B were associated with increased risk of VTE.<sup>12</sup>

Recently, apoC-II, C-III and E have emerged as potential risk factors for cardiovascular disease<sup>17–20</sup> and as target for new lipid-lowering agents.<sup>21</sup> Whether these newly described risk factors for cardiovascular disease also play a role in the risk of VTE has not been evaluated thus far. In this study, we apply recent advances in liquid chromatography tandem-mass spectrometry (LC/MS/MS)<sup>22</sup> to perform a comprehensive analysis of the association between serum apoC-I, C-II, C-III and E and levels of hemostatic factors (proteins C and S, antithrombin, TFPI activity, fibrinogen, factors II, VII, VIII, IX, X, XI, von Willebrand and clot lysis time) and inflammatory markers (C-reactive protein). We also investigate the association of these serum apoproteins with the risk of VTE.

## Materials and methods

### Study population

For this study, patients and random-digit-dialing (RDD) controls were randomly selected from a population-based case-control study, ie, the Multiple Environmental and Genetic Assessment of Risk Factors for Venous Thrombosis (MEGA) study and from a cohort study, the MEGA follow-up.

Details of the MEGA study were described previously.<sup>23</sup> Briefly, between March 1999 and August 2004, 4,956 consecutive patients aged 18–70 years with a first acute VTE (deep vein thrombosis or pulmonary embolism) were included. A questionnaire on putative risk factors for VTE was filled in, and blood was sampled on the day of enrolment for the study. Participants were asked to provide blood samples up to June 2002, and 2,377 patients and 1,459 RDD controls provided blood samples. Blood samples were collected from at least 3 months after discontinuation of anticoagulation or during anticoagulant therapy if this was continued for more than 1 year. None of the included patients with VTE had a recurrence before blood sampling.

RDD controls were frequency matched for sex and age to the cases. RDD controls were aged 18–70 years and had no history of VTE. Patients were followed until 2007–2009

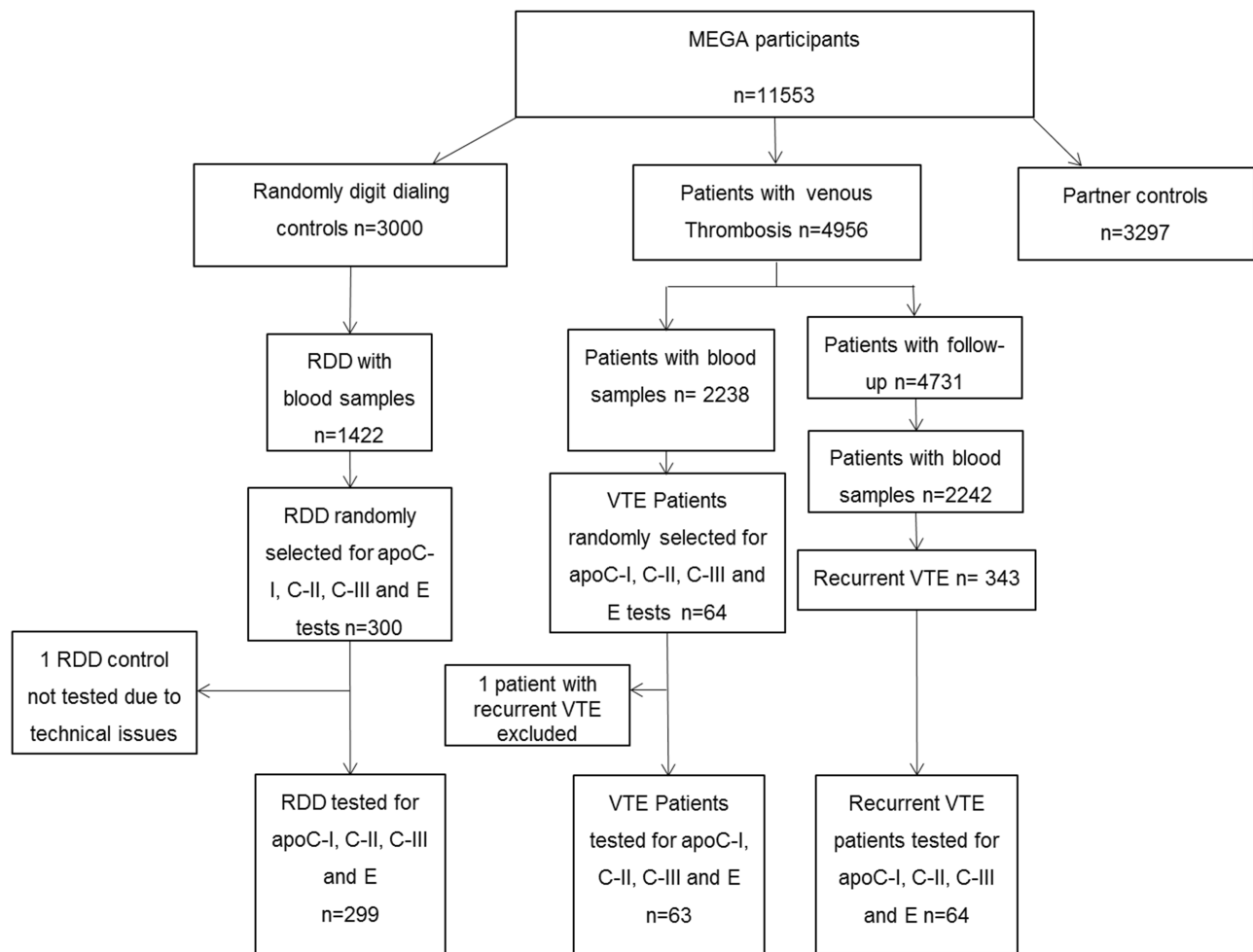
when the vital status of all MEGA follow-up participants was accessed, as described previously (MEGA follow-up study).<sup>24</sup> The MEGA study was approved by the Ethics Committee of the Leiden University Medical Center, and written informed consent was obtained from all participants at the date of the inclusion in the study. This study was conducted in accordance with the Declaration of Helsinki.

A total of 127 patients with a first VTE event were selected from the MEGA study and MEGA follow-up study, of whom 63 (50%) had one VTE event and 64 (50%) recurrent VTE. Patients with recurrent VTE were oversampled a-priori as we considered them to be more likely to have aberrant apo levels leading to first and recurrent VTE. Otherwise, the sampling was completely random. The control group comprised 300 controls randomly chosen from the RDD control population of the MEGA study. In all groups, apoC-I, C-II, C-III and E were measured. [Figure 1](#) illustrates the flow chart of the participants' selection for the study.

### Clinical outcomes

The information about the diagnosis of VTE was obtained from hospital discharge reports and general practitioners. The diagnosis of deep vein thrombosis was confirmed with Doppler ultrasonography, and the diagnosis of pulmonary embolism was confirmed with a ventilation/perfusion lung scan, computed tomography of the chest or angiogram.

Between June 2008 and July 2009, participants were invited to answer questions regarding recurrent VTE by mail or by telephone interview. Information about recurrences was also retrieved from the anticoagulation clinics where patients were initially included for their first event and at the clinic nearest to their address in case they moved house. Discharge letters were requested from the clinician who had diagnosed the recurrence. A decision rule regarding certainty of the diagnosis was made according to the information collected per patient, as described previously.<sup>25</sup> Reported recurrences were classified as certain when 1) a discharge letter stated a diagnosis of a recurrent event based on clinical and radiological data or 2) both the anticoagulation clinic and the patient reported a recurrent event that was at a clearly different location than the first event or occurred more than one year since the first event or 3) a registered death from a recurrent event at least six months after the first event was found. For this analysis, we considered certain recurrences as outcome event only.



**Figure 1** Flow chart of participants selection. Patients and RDD controls were randomly selected from the Multiple Environmental and Genetic Assessment of Risk Factors for Venous Thrombosis study (MEGA), the Netherlands, 1999–2004.

**Abbreviations:** RDD, random-digit-dialing; VTE, venous thromboembolism; apo, apolipoprotein.

## Laboratory procedures

ApoC-I, C-II, C-III and E were measured on stored ( $-80^{\circ}\text{C}$ ) and once previously thawed fasting serum samples. To determine the apo profile, a mass spectrometric method was developed for multiplexed quantification of apolipoproteins.<sup>26</sup> This multiplex mass spectrometry-based analytical method was validated according to Clinical and Laboratory Standards Institute (CLSI) protocols, and its total coefficient of variation (CV) ranges from 2.5% to 5.9% for the apolipoproteins.<sup>27</sup>

In contrast to classical high-density lipoprotein–cholesterol (HDLc) and low-density lipoprotein–cholesterol (LDLc) tests and lipoprotein particle counting methods, the quantitative proteomics test allows quantitation of unequivocally characterized apos with an analytical performance that meets test requirements derived from biological variation. The peptides in the serum digest are

separated by liquid chromatography (LC) and detected by tandem-mass spectrometry (MS/MS). In MS/MS, ions of the selected peptides are pre-filtered by their molecular mass-to-charge ratio before fragmentation by a collision gas and detection of the generated, highly specific, product ions, relative to stable isotope labeled internal standard peptides. The trace of a precursor-to-product ion transition is used for protein identification and/or quantification.

Serum lipids and lipoprotein fractions were measured using reagents and calibrators from Roche Diagnostics on Modular P analyzers. Traceability of serum lipid and lipoprotein test results to the CDC Reference Measurement System is guaranteed and monitored through stringent vigilance by the Dutch SKML EQA-programme.<sup>28</sup>

Procoagulant factors (fibrinogen, factors II, VII, VIII, IX, X and XI, and von Willebrand factor), natural anticoagulants (antithrombin, protein C and total protein S),

clot lysis time and high sensitive C-reactive protein (hsCRP) levels were determined according to previously described methods.<sup>29,30</sup> Briefly, measurements of antithrombin and protein C levels were performed with a chromogenic assay and factors II, VII, VIII, X and XI activities were measured with a mechanical clot detection method on a STA-R coagulation analyzer following the instructions of the manufacturer (Diagnostica Stago, Asnieres, France). Total protein S levels and levels of factor IX antigen were determined by ELISA (Diagnostica Stago). Fibrinogen activity was measured on the STA-R analyzer. Von Willebrand factor antigen was measured by immunoturbidimetry (STA Liatest<sup>®</sup>, Diagnostica Stago), following the instructions of the manufacturer. CRP was measured by automated particle-enhanced immunoturbidimetric assay (Tina-quant<sup>®</sup> CRP detection method; Roche Diagnostics, West Sussex, UK).

Total tissue factor pathway inhibitor (TFPI) activity in citrated plasma was determined using the Actichrome TFPI activity assay (Sekisui Diagnostics, Stamford, CT, USA). Briefly, TFPI activity is assessed by measuring TFPI inhibition of the catalytic tissue factor (TF)-factor VIIa (FVIIa) complex; one unit of TFPI activity corresponds to 55 ng/mL plasma TFPI. All laboratory analyses were performed without knowledge of whether the sample was from a patient or a control subject.

## Statistical analysis

Baseline characteristics are presented as counts and percentages if they are categorical variables or mean±standard deviation (SD) if they are continuous variables.

To assess the association of apoC-I, C-II, C-III and E with hemostatic factors and inflammatory markers, the apo-levels were considered as per standard deviation (SD) increase and linear regression models were performed. Data that were not normally distributed were log-transformed. The models were adjusted for age (continuous), sex (dichotomous), statin use (dichotomous), estrogen use (dichotomous), alcohol intake (dichotomous), body mass index (continuous) and self-reported diabetes (dichotomous).

The association between apoC-I, C-II, C-III and E and VTE was assessed by logistic regression analysis. Three adjusted logistic regression models were used: age and sex-adjusted model; age, sex and statin use-adjusted model and age, sex, statin-use, estrogen use, alcohol intake, body mass index, and self-reported diabetes adjusted model. In each logistic regression model, odds

ratios (OR) and their 95% CI were used to estimate the association with all VTE (n=127), or one VTE event only (n=63), using the levels of apolipoproteins as continuous variables.

As 64 patients also had a recurrent VTE, differences in the outcome between patients with only one VTE event (n=63) and recurrent VTE (n=64) were studied in a case-control analysis within the MEGA follow-up study. For this purpose, an age- and sex-adjusted logistic regression model was applied to estimate the odds ratio of recurrent VTE, as compared with first VTE only, for apo levels as continuous values.

All statistical analyses were performed with SPSS version 23.0 for Windows (SPSS Inc, IBM, Armonk, NY, USA). Graphs were plotted using GraphPad Prism version 6.0 for MAC (GraphPad Software Inc., La Jolla, CA, USA).

## Results

### Clinical characteristics

Clinical characteristics of the participants are shown in [Table 1](#). The main site of thrombosis was deep vein thrombosis (65%). There were no substantial clinical differences between patients and RDD controls selected for the current analysis and the total patients and RDD control participants of MEGA study (data not shown).

### Association of apoC-I, C-II, C-III and E with hemostatic and inflammatory markers

Graphic material on the correlation between apos C-I, -II, -III, E and vitamin K-dependent coagulation factors and FVIII and VWF are shown in [Figures S1–S8](#).

In controls, the mean levels (and SD) of apoC-I, C-II, C-III and E were 21.38 mg/L (5.33), 39.89 mg/L (27.64), 103.59 mg/L (37.11) and 30.71 mg/L (13.03), respectively. The associations of apoC-I, C-II, C-III and E with hemostatic factors and inflammatory markers in control subjects are shown in detail in [Table 2](#).

Increases in the levels of all measured apos (apoC-I, C-II, C-III and E) were associated with higher levels of FII, FVII, FIX, FX, FXI, natural anticoagulants (protein C, protein S, antithrombin) and clot lysis time. Additionally, an increase in the levels of FVIII and VWF was observed with increases in the levels of apoC-III and apoE ([Table 2](#)). There was no association of apoC-I, C-II, C-III or E with levels of CRP.

**Table 1** Clinical characteristics of patients and RDD controls randomly selected from the Multiple Environmental and Genetic Assessment of Risk Factors for Venous Thrombosis study, the Netherlands, 1999–2004

Characteristic <sup>a</sup>	Patients			RDD controls (n=299)
	All (n=127)	First VTE (n=63)	Recurrent VTE (n=64)	
Age at enrollment <sup>b</sup> , mean (SD)	46 (13)	45 (12)	47 (13)	47 (13)
Men, n (%)	59 (46)	20 (32)	39 (61)	138 (46)
Statin use, n (%)	3 (2.4)	3 (4.8)	0 (0)	22 (7)
BMI, kg/m <sup>2</sup> , mean (SD)	27.4 (4.8)	27.6 (5.2)	27 (4.4)	25.3 (4.2)
Estrogen use, n (% in women)	43 (64.2)	26 (41.3)	17 (26.6)	40 (25.3)
Diabetes (self-reported), n (%)	3 (2.4)	1 (1.6)	2 (3.1)	5 (1.7)
Alcohol use, n (%)				
No	26 (21)	15 (25)	11 (17)	35 (12)
Yes	96 (79)	45 (75)	52 (83)	263 (88)

**Notes:** <sup>a</sup>There were some missing data on BMI, estrogen use, statin use, alcohol use and diabetes. <sup>b</sup>Age is expressed in years.

**Abbreviations:** BMI, body mass index; RDD, random-digit-dialing; VTE, venous thromboembolism.

**Table 2** Association of apolipoproteins with levels of hemostatic factors and C-reactive protein in RDD controls randomly selected from the Multiple Environmental and Genetic Assessment of Risk Factors for Venous Thrombosis case-control study, the Netherlands, 1999–2004

Parameters	ApoC-I (n=292) <sup>a</sup>		ApoC-II (n=286) <sup>a</sup>		ApoC-III (n=292) <sup>a</sup>		ApoE (n=292) <sup>a</sup>	
	per SD increase (5.33 mg/L)	(95%CI)	per SD increase (0.97 mg/L)	(95%CI)	per SD increase (37.11 mg/L)	(95%CI)	per SD increase (13.03 mg/L)	(95%CI)
<b>Anticoagulant factors</b>								
Protein C (IU/dL) <sup>b</sup>	8.21	(6.02; 10.40)	6.25	(3.77; 8.72)	8.00	(5.73; 10.26)	7.34	(5.00; 9.68)
Protein S antigen (IU/dL) <sup>b</sup>	5.51	(3.52; 7.50)	5.26	(3.10; 7.42)	5.74	(3.71; 7.78)	3.86	(1.72; 5.99)
Antithrombin (IU/dL)	2.78	(1.56; 4.00)	2.12	(0.77; 3.46)	2.41	(1.19; 3.64)	1.74	(0.45; 3.02)
TFPI activity (IU/mL)	0.07	(0.01; 0.12)	0.04	(−0.02; 0.10)	0.00	(−0.05; 0.06)	0.04	(−0.01; 0.10)
<b>Procoagulant factors</b>								
Fibrinogen (g/L)	−0.07	(−0.14; 0.00)	0.02	(−0.06; 0.10)	0.01	(−0.07; 0.08)	0.06	(−0.01; 0.14)
Factor II (IU/dL) <sup>b</sup>	4.47	(3.07; 5.86)	3.10	(1.55; 4.65)	4.83	(3.41; 6.24)	3.42	(1.92; 4.92)
Factor VII (IU/dL) <sup>b</sup>	8.10	(5.56; 10.63)	4.90	(2.07; 7.73)	9.87	(7.35; 12.39)	8.80	(6.17; 11.43)
Factor VIII (IU/dL)	1.07	(−3.72; 5.85)	2.83	(−2.37; 8.02)	6.60	(1.91; 11.30)	5.12	(0.23; 10.02)
VWF (IU/dL)	2.07	(−2.72; 6.85)	3.01	(−2.20; 8.21)	5.74	(1.02; 10.45)	6.08	(1.19; 10.96)
Factor IX antigen (IU/dL) <sup>b</sup>	3.62	(1.62; 5.61)	2.80	(0.63; 4.96)	5.45	(3.46; 7.43)	2.74	(0.64; 4.84)
Factor X (IU/dL) <sup>b</sup>	7.06	(5.22; 8.90)	4.81	(2.73; 6.90)	7.96	(6.11; 9.80)	4.70	(2.67; 6.73)
Factor XI (IU/dL)	3.67	(1.52; 5.82)	2.26	(−0.07; 4.58)	2.14	(−0.02; 4.31)	3.68	(1.46; 5.89)
<b>Fibrinolytic factor</b>								
Clot lysis time (min) <sup>b</sup>	5.91	(3.71; 8.11)	3.40	(0.95; 5.85)	5.95	(3.69; 8.20)	6.36	(4.07; 8.64)
<b>Inflammatory marker</b>								
hsCRP (mg/L) <sup>c</sup>	−0.10	(−0.21; 0.02)	0.03	(−0.10; 0.16)	0.02	(−0.10; 0.14)	0.09	(−0.03; 0.21)

**Notes:** <sup>a</sup>Adjusted for age, sex, statin use, estrogen use, BMI, alcohol use and self-reported diabetes. <sup>b</sup>Individuals using VKA are excluded when analyzing vitamin K-dependent coagulation factors (3 RDD were using anticoagulants). <sup>c</sup>Values were log-transformed.

**Abbreviations:** ApoC-I, apolipoprotein C-I; ApoC-II, apolipoprotein C-II; ApoC-III, apolipoprotein C-III; ApoE, apolipoprotein E; CI, confidence interval; RDD, random-digit-dialing; TFPI, tissue factor pathway inhibitor; VWF, von Willebrand factor.

## Association of apoC-i, C-II, C-III and E with VTE

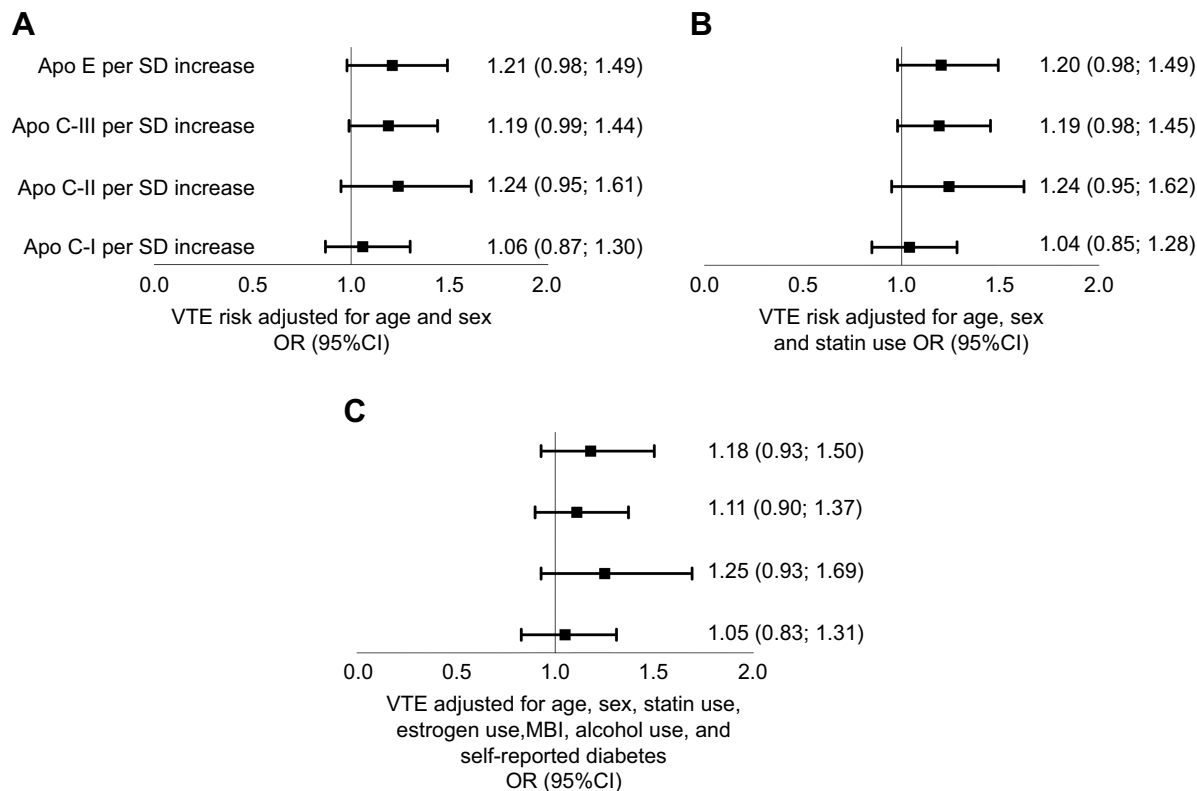
In VTE patients, the mean levels (and SD) of apoC-I, C-II, C-III and E were 21.59 mg/L (6.29), 43.08 mg/L (32.22), 110.53 mg/L (46.04) and 32.92 mg/L (12.69), respectively. Figure 2 illustrates the association between apo levels and first VTE risk. There was no association between first VTE and levels of apoC-I. The sex and age-adjusted OR and 95% CI of first VTE was 1.24 (95% CI: 0.95, 1.61) with apoC-II, 1.19 (OR 95% CI: 0.99, 1.44) with apoC-III and 1.21 (95% CI: 0.98, 1.49) with apoE, as compared with RDD controls. The observed associations remained similar after further adjustments for statin use, estrogen use, BMI, alcohol use and self-reported diabetes. Results were also similar when considering patients with only one VTE event. Age- and sex-adjusted odds ratios of VTE for apolipoproteins C-I, C-II, C-III and E levels when comparing patients with only one VTE event with RDD controls were 1.03 (95% CI 0.78–1.37), 1.26 (95% CI 0.88–1.81), 1.07 (95% CI 0.81–1.41) and 1.21 (95% CI 0.93–1.57) respectively.

The sex- and age-adjusted ORs and 95% CIs of recurrent VTE with apoC-I, C-II, C-III and E levels (per SD increase) were 1.03 (95% CI: 0.77, 1.39), 1.14 (95% CI: 0.74, 1.78), 1.22 (95% CI: 0.90, 1.66) and 0.99 (0.69–1.42), respectively, as compared with first VTE only.

## Discussion

In individuals without VTE, levels of apoC-I, C-II, C-III and E were associated with levels of several hemostatic factors, in particular with vitamin K-dependent procoagulant factors and natural anticoagulants. The association of these apos with coagulation factors remained significant after adjustment for confounding factors. These observations are consistent with previous results from the MEGA study, in which a positive association of apoA-I and B with vitamin K-dependent factors and coagulation inhibitors was reported.<sup>12</sup>

Additionally, higher levels of both apoC-III and E were associated with increases in levels of FVIII and VWF, which are well-known risk factors for VTE.<sup>31–33</sup> It is also worth noticing that apoC-III and apoE have consistently been associated with cardiovascular diseases.<sup>34</sup>



**Figure 2** Odds ratio of venous thromboembolism for apolipoproteins C-I, C-II, C-III and E levels when comparing patients and RDD controls randomly selected from the Multiple Environmental and Genetic Assessment of Risk Factors for Venous Thrombosis Case-control study, the Netherlands, 1999–2004. The models were adjusted for: (A) age and sex; (B) age, sex and statin use and (C) age, sex, statin use, estrogen use, alcohol intake, body mass index and self-reported diabetes adjusted model. Data show odds ratio (OR) and 95% confidence interval (CI).

**Abbreviations:** RDD, random digit dialing; VTE, venous thromboembolism; apo, apolipoprotein.

Previous studies demonstrated that apoE (per SD increase) is associated with 15% to 30% increased risk of ischemic heart disease<sup>20,35</sup> and 2-fold increased risk of cardiovascular mortality.<sup>36</sup> Therefore, our findings provide additional evidence for an association between the proteomic signature and a worse or impaired lipid/coagulation pattern due to cross-talks between these systems.

Multiple mechanisms are potentially at the basis of this association. As the major source of serum apoC-I, C-II, C-III and E are the hepatocytes, it is possible that the synthesis of apos and hepatocyte-derived coagulation factors and natural anticoagulants is regulated by common mechanisms.<sup>33,34</sup> Additionally, biochemical studies have shown that triglyceride-rich lipoproteins, which contain apoC-I, C-II, C-III and E, stimulate coagulation in vitro by binding vitamin K-dependent coagulation factors, promoting enzymatic activity of prothrombinase complex and enhancing thrombin activation.<sup>37,38</sup> Although these hypotheses may explain the association between apoC-I, C-II, C-III and E and hepatocyte-derived coagulation factors, it does not explain the association of apoC-III and E with coagulation factors secreted by the endothelium and not dependent of vitamin K, such as VWF and FVIII.<sup>35,36</sup> Biological mechanisms linking apoE and FVIII have been described.<sup>39–42</sup> In animal models of atherogenesis, the absence of FVIII had a protective effect against the development of atherosclerosis in *APOE* knock-out mice.<sup>39,40</sup> Moreover, low-density lipoprotein receptor-related protein-1 (LRP-1) is a common receptor for both apoE and FVIII.<sup>41</sup> The receptor is also capable of mediating the degradation of FVIII<sup>42</sup> and contributes to variations in FVIII plasma levels.<sup>43</sup> Therefore, the observed association between apoC-I, C-II, C-III and E and coagulation factors may be explained by various mechanisms, such as common pathways of synthesis in hepatocytes,<sup>33,34</sup> coagulation activation<sup>37,38</sup> and competition binding between apoE and FVIII for a common receptor.<sup>43</sup>

Since VTE patients are characterized by a high prevalence of classic cardiovascular risk factors,<sup>6</sup> we further evaluated whether apoC-I, C-II, C-III and E were associated with risk of VTE. Although our analyses pointed towards an association between apoC-II, C-III and E with VTE risk, numbers were small and confidence intervals included unity. Therefore, our results need larger studies to definitely conclude on the relation between these apos and VTE risk.

Some aspects in this study need to be considered in order to interpret our results. First, the sample was

randomly selected from a large population-based study, the MEGA study, but was not large enough for strong conclusions on the association with VTE risk. Second, we cannot rule out that some associations between apos and hemostatic factors occurred by chance or due to residual confounding such as hepatic function or diet, variables on which we have no information in MEGA. However, similar associations were described previously both in basic research and in population-based studies<sup>9,20,37–44</sup> and can be explained biologically. Third, despite patients with recurrent VTE being overrepresented, the study sampling was otherwise completely random. As a result, clinical characteristics of patients and RDD controls selected for this study were similar to that reported for the total MEGA study population.<sup>12</sup> Furthermore, the availability of the blood samples was based on logistical reasons only, where blood sampling was performed for all participants included up to June 2002.<sup>45</sup> It is possible, though, that a participant's clinical condition contributed to his/her decision to partake on blood sampling. Forth, it is possible to argue that since apos were tested after the VTE event, reverse causality was present. Indeed, after VTE, patients may have modified certain lifestyle factors, which could have affected their apo profile. However, results from randomized trials have shown that changes in diet hardly affect lipid levels without concomitant statin use or aerobic-exercise programs.<sup>46,47</sup> Finally, since the investigation of apoC-I, C-II, C-III and E for associations with coagulation factors, inflammatory markers and VTE is unprecedented, our findings require replication.

## Conclusion

In conclusion, we have shown that serum apoC-I, C-II, C-III and E were associated with multiple plasma coagulation factors and natural anticoagulants. Particularly, higher levels of apoC-III and E were associated with an increase in levels of FVIII and VWF. Whether these apolipoproteins are also associated with an increased risk of VTE remains to be established.

## Abbreviations list

Apo, apolipoprotein; CI, confidence interval; CLT, clot lysis time; F, Factor; HDLc, high-density lipoprotein-cholesterol; Hs-CRP, high sensitivity C-reactive protein; LC/MS/MS, liquid chromatography detected tandem-mass spectrometry; LDLc, low-density lipoprotein-cholesterol; PC, Protein C; PS, Protein S; RDD, random-digit-dialing;

TFPI, tissue factor pathway inhibitor; VTE, venous thromboembolism; VWF von Willebrand factor.

## Acknowledgments

We express our gratitude to all individuals who participated in the MEGA study, and to the staff involved in the execution of the study. This study was supported by The Netherlands Heart Foundation (NHS 98.113), the Dutch Cancer Foundation (RUL 99/1992), and The Netherlands Organization for Scientific Research (912-03-033 2003). Fernanda A Orsi received financial support from the São Paulo Research Foundation (FAPESP grant #2017/09506-5).

## Disclosure

The authors report no conflicts of interest in regard to this work.

## References

- Prandoni P. Venous and arterial thrombosis: two aspects of the same disease? *Eur J Intern Med.* 2009;20(6):660–661. doi:10.1016/j.ejim.2009.02.001
- Lijfering WM, Flinterman LE, Vandenbroucke JP, Rosendaal FR, Cannegieter SC. Relationship between venous and arterial thrombosis: a review of the literature from a causal perspective. *Semin Thromb Hemost.* 2011;37(8):885–896. doi:10.1055/s-0031-1297367
- Glynn RJ, Danielson E, Fonseca FA, et al. A randomized trial of rosuvastatin in the prevention of venous thromboembolism. *N Engl J Med.* 2009;360(18):1851–1861. doi:10.1056/NEJMoa0900241
- Becattini C, Agnelli G, Schenone A, et al. Aspirin for preventing the recurrence of venous thromboembolism. *N Engl J Med.* 2012;366(21):1959–1967. doi:10.1056/NEJMoa1114238
- Brighton TA, Eikelboom JW, Mann K, et al. Low-dose aspirin for preventing recurrent venous thromboembolism. *N Engl J Med.* 2012;367(21):1979–1987. doi:10.1056/NEJMoa1210384
- Ageno W, Becattini C, Brighton T, Selby R, Kamphuisen PW. Cardiovascular risk factors and venous thromboembolism: a meta-analysis. *Circulation.* 2008;117(1):93–102. doi:10.1161/CIRCULATIONAHA.107.709204
- Ribeiro DD, Lijfering WM, Rosendaal FR, Cannegieter SC. Risk of venous thrombosis in persons with increased body mass index and interactions with other genetic and acquired risk factors. *J Thromb Haemost.* 2016;14(8):1572–1578. doi:10.1111/jth.13371
- Zoller B, Li X, Sundquist J, Sundquist K. Socioeconomic and occupational risk factors for venous thromboembolism in Sweden: a nationwide epidemiological study. *Thromb Res.* 2012;129(5):577–582. doi:10.1016/j.thromres.2011.07.050
- Griffin JH, Fernandez JA, Deguchi H. Plasma lipoproteins, hemostasis and thrombosis. *Thromb Haemost.* 2001;86(1):386–394. doi:10.1055/s-0037-1616236
- Lacoste L, Lam JYT, Hung J, Letchacovski G, Solymoss CB, Waters D. Hyperlipidemia and coronary-disease - correction of the increased thrombogenic potential with cholesterol reduction. *Circulation.* 1995;92(11):3172–3177.
- van Schouwenburg IM, Mahmoodi BK, Gansevoort RT, et al. Lipid levels do not influence the risk of venous thromboembolism. Results of a population-based cohort study. *Thromb Haemost.* 2012;108(5):923–929. doi:10.1160/TH12-06-0426
- Morelli VM, Lijfering WM, Bos MHA, Rosendaal FR, Cannegieter SC. Lipid levels and risk of venous thrombosis: results from the MEGA-study. *Eur J Epidemiol.* 2017. doi:10.1007/s10654-017-0251-1
- Chamberlain AM, Folsom AR, Heckbert SR, Rosamond WD, Cushman M. High-density lipoprotein cholesterol and venous thromboembolism in the Longitudinal Investigation of Thromboembolism Etiology (LITE). *Blood.* 2008;112(7):2675–2680. doi:10.1182/blood-2008-05-157412
- Deguchi H, Pecheniuk NM, Elias DJ, Averell PM, Griffin JH. High-density lipoprotein deficiency and dyslipoproteinemia associated with venous thrombosis in men. *Circulation.* 2005;112(6):893–899. doi:10.1161/CIRCULATIONAHA.104.521344
- Delluc A, Malecot JM, Kerspern H, et al. Lipid parameters, lipid lowering drugs and the risk of venous thromboembolism. *Atherosclerosis.* 2012;220(1):184–188. doi:10.1016/j.atherosclerosis.2011.10.007
- Everett BM, Glynn RJ, Buring JE, Ridker PM. Lipid biomarkers, hormone therapy and the risk of venous thromboembolism in women. *J Thromb Haemost.* 2009;7(4):588–596. doi:10.1111/j.1538-7836.2009.03302.x
- von Ballmoos M, Haring B, Sacks FM. The risk of cardiovascular events with increased apolipoprotein CIII: a systematic review and meta-analysis. *J Clin Lipidol.* 2015;9(4):498–510. doi:10.1016/j.jacl.2015.05.002
- McQueen MJ, Hawken S, Wang XY, et al. Lipids, lipoproteins, and apolipoproteins as risk markers of myocardial infarction in 52 countries (the INTERHEART study): a case-control study. *Lancet.* 2008;372(9634):224–233. doi:10.1016/S0140-6736(08)61076-4
- Parish S, Peto R, Palmer A, et al. The joint effects of apolipoprotein B, apolipoprotein A1, LDL cholesterol, and HDL cholesterol on risk: 3510 cases of acute myocardial infarction and 9805 controls. *Eur Heart J.* 2009;30(17):2137–2146. doi:10.1093/eurheartj/ehp221
- Pechlaner R, Tsimikas S, Yin X, et al. Very-low-density lipoprotein-associated apolipoproteins predict cardiovascular events and are lowered by inhibition of APOC-III. *J Am Coll Cardiol.* 2017;69(7):789–800. doi:10.1016/j.jacc.2016.11.065
- Gaudet D, Alexander VJ, Baker BF, et al. Antisense Inhibition of Apolipoprotein C-III in Patients with Hypertriglyceridemia. *N Engl J Med.* 2015;373(5):438–447. doi:10.1056/NEJMoa1400283
- Trenchevska O, Schaab MR, Nelson RW, Nedelkov D. Development of multiplex mass spectrometric immunoassay for detection and quantification of apolipoproteins C-I, C-II, C-III and their proteoforms. *Methods.* 2015;81:86–92. doi:10.1016/j.ymeth.2015.02.020
- Blom JW, Doggen CJ, Osanto S, Rosendaal FR. Malignancies, prothrombotic mutations, and the risk of venous thrombosis. *Jama.* 2005;293(6):715–722. doi:10.1001/jama.293.6.715
- Flinterman LE, van Hylckama Vlieg A, Cannegieter SC, Rosendaal FR. Long-term survival in a large cohort of patients with venous thrombosis: incidence and predictors. *PLoS Med.* 2012;9(1):e1001155. doi:10.1371/journal.pmed.1001155
- Timp JF, Lijfering WM, Flinterman LE, et al. Predictive value of factor VIII levels for recurrent venous thrombosis: results from the MEGA follow-up study. *J Thromb Haemost.* 2015;13(10):1823–1832. doi:10.1111/jth.13113
- van den Broek I, Romijn FP, Nouta J, et al. Automated multiplex LC-MS/MS assay for quantifying serum apolipoproteins A-I, B, C-I, C-II, C-III, and E with qualitative apolipoprotein E phenotyping. *Clin Chem.* 2016;62(1):188–197. doi:10.1373/clinchem.2015.246702
- Ruhaak LR, Smit NPM, Romijn F, et al. Robust and accurate 2-year performance of a quantitative mass spectrometry-based apolipoprotein test in a clinical chemistry laboratory. *Clin Chem.* 2018;64(4):747–749. doi:10.1373/clinchem.2017.285098
- Thelen MHM, Jansen RTP, Weykamp CW, Steigstra H, Meijer R, Cobbaert CM. Expressing analytical performance from multi-sample evaluation in laboratory EQA. *Clin Chem Lab Med.* 2017;55(10):1509–1516. doi:10.1515/cclm-2016-0970



29. Meltzer ME, Lisman T, de Groot PG, et al. Venous thrombosis risk associated with plasma hypofibrinolysis is explained by elevated plasma levels of TAFI and PAI-1. *Blood*. 2010;116(1):113–121. doi:10.1182/blood-2010-02-267740
30. Ocak G, Vossen CY, Verduijn M, et al. Risk of venous thrombosis in patients with major illnesses: results from the MEGA study. *J Thromb Haemost*. 2013;11(1):116–123. doi:10.1111/jth.12043
31. Kyrle PA, Minar E, Hirschl M, et al. High plasma levels of factor VIII and the risk of recurrent venous thromboembolism. *N Engl J Med*. 2000;343(7):457–462. doi:10.1056/NEJM200008173430702
32. Kraaijenhagen RA, in't Anker PS, Koopman MM, et al. High plasma concentration of factor VIIIc is a major risk factor for venous thromboembolism. *Thromb Haemost*. 2000;83(1):5–9.
33. Koster T, Blann AD, Briet E, Vandenbroucke JP, Rosendaal FR. Role of clotting factor VIII in effect of von willebrand factor on occurrence of deep-vein thrombosis. *Lancet*. 1995;345(8943):152–155.
34. Rasmussen KL. Plasma levels of apolipoprotein E, APOE genotype and risk of dementia and ischemic heart disease: a review. *Atherosclerosis*. 2016;255:145–155. doi:10.1016/j.atherosclerosis.2016.10.037
35. Rasmussen KL, Tybjaerg-Hansen A, Nordestgaard BG, Frikke-Schmidt R. Plasma levels of apolipoprotein E and risk of ischemic heart disease in the general population. *Atherosclerosis*. 2016;246:63–70. doi:10.1016/j.atherosclerosis.2015.12.038
36. Mooijaart SP, Berbee JF, van Heemst D, et al. ApoE plasma levels and risk of cardiovascular mortality in old age. *PLoS Med*. 2006;3(6):e176. doi:10.1371/journal.pmed.0030176
37. Vormittag R, Bencur P, Ay C, et al. Low-density lipoprotein receptor-related protein 1 polymorphism 663 C > T affects clotting factor VIII activity and increases the risk of venous thromboembolism. *J Thromb Haemost*. 2007;5(3):497–502. doi:10.1111/j.1538-7836.2006.02337.x
38. Schwarz HP, Lenting PJ, Binder B, et al. Involvement of low-density lipoprotein receptor-related protein (LRP) in the clearance of factor VIII in von willebrand factor-deficient mice. *Blood*. 2000;95(5):1703–1708.
39. Strickland DK, Ranganathan S. Diverse role of LDL receptor-related protein in the clearance of proteases and in signaling. *J Thromb Haemost*. 2003;1(7):1663–1670.
40. de Sousa JC, Soria C, Ayrault-Jarrier M, et al. Association between coagulation factors VII and X with triglyceride rich lipoproteins. *J Clin Pathol*. 1988;41(9):940–944. doi:10.1136/jcp.41.9.940
41. Moyer MP, Tracy RP, Veer CV, Sparks CE, Mann KG. Plasma lipoproteins support prothrombinase and other procoagulant enzymatic complexes. *Arterioscler Thromb Vasc Biol*. 1998;18(3):458–465.
42. Winckers K, ten Cate H, Hackeng TM. The role of tissue factor pathway inhibitor in atherosclerosis and arterial thrombosis. *Blood Rev*. 2013;27(3):119–132. doi:10.1016/j.blre.2013.03.001
43. Steffel J, Luscher TF, Tanner FC. Tissue factor in cardiovascular diseases: molecular mechanisms and clinical implications. *Circulation*. 2006;113(5):722–731. doi:10.1161/CIRCULATIONAHA.105.567297
44. White CR, Garber DW, Anantharamaiah GM. Anti-inflammatory and cholesterol-reducing properties of apolipoprotein mimetics: a review. *J Lipid Res*. 2014;55(10):2007–2021. doi:10.1194/jlr.R051367
45. Ocak G, Vossen CY, Lijfering WM, et al. Role of hemostatic factors on the risk of venous thrombosis in people with impaired kidney function. *Circulation*. 2014;129(6):683–691. doi:10.1161/CIRCULATIONAHA.113.002385
46. Stefanick ML, Mackey S, Sheehan M, Ellsworth N, Haskell WL, Wood PD. Effects of diet and exercise in men and postmenopausal women with low levels of HDL cholesterol and high levels of LDL cholesterol. *N Engl J Med*. 1998;339(1):12–20. doi:10.1056/NEJM199807023390103
47. Hunninghake DB, Stein EA, Dujovne CA, et al. The efficacy of intensive dietary therapy alone or combined with lovastatin in outpatients with hypercholesterolemia. *N Engl J Med*. 1993;328(17):1213–1219. doi:10.1056/NEJM199304293281701

## Clinical Epidemiology

### Publish your work in this journal

Clinical Epidemiology is an international, peer-reviewed, open access, online journal focusing on disease and drug epidemiology, identification of risk factors and screening procedures to develop optimal preventative initiatives and programs. Specific topics include: diagnosis, prognosis, treatment, screening, prevention, risk factor modification,

Submit your manuscript here: <https://www.dovepress.com/clinical-epidemiology-journal>

systematic reviews, risk & safety of medical interventions, epidemiology & biostatistical methods, and evaluation of guidelines, translational medicine, health policies & economic evaluations. The manuscript management system is completely online and includes a very quick and fair peer-review system, which is all easy to use.