



## ORIGINAL ARTICLE

# The change in the prevalence of obesity and new-onset diabetes in Chinese peritoneal dialysis patients over 25 years

Win Hlaing Than<sup>1,2</sup>, Jack Kit-Chung Ng <sup>1</sup>, Gordon Chun-Kau Chan<sup>1</sup>, Winston Wing-Shing Fung <sup>1</sup>, Kai-Ming Chow<sup>1</sup> and Cheuk-Chun Szeto<sup>1,2</sup>

<sup>1</sup>Department of Medicine & Therapeutics, Carol & Richard Yu Peritoneal Dialysis Research Centre, Prince of Wales Hospital, Shatin, Hong Kong, China and <sup>2</sup>Li Ka Shing Institute of Health Sciences (LiHS), Faculty of Medicine, The Chinese University of Hong Kong, Shatin, Hong Kong, China

Correspondence to: Cheuk-Chun Szeto; E-mail: ccszeto@cuhk.edu.hk

## ABSTRACT

**Background.** The global prevalence of both obesity and end-stage kidney diseases (ESKD) has increased in recent decades. Given the complicated interaction between obesity and ESKD, we examined the change in the prevalence of obesity in incident Chinese peritoneal dialysis (PD) patients over the past 25 years.

**Methods.** We reviewed the anthropometric measures of incident PD patients in a single Hong Kong center from 1995 to 2019. The results are reported in five 5-year periods. Patients with and without diabetes were analyzed separately, and the incidence of new-onset diabetes after PD was explored.

**Results.** We reviewed 1681 patients. Their mean age was  $58.4 \pm 12.5$  years; 931 patients (55.4%) had pre-existing diabetes. From 1995–99 to 2015–19, the prevalence of obesity or overweight at the initiation of PD increased progressively for every 5-year period (from 21.9% to 26.2, 37.9, 42.7 and 47.3%,  $P < 0.001$  for linearity). The increase in the prevalence of obesity or overweight was more pronounced in diabetic patients (from 33.7% to 59.6%) than non-diabetic ones (from 13.2% to 32.3%). Among nondiabetics patients, the incidence of new-onset diabetes after started on PD showed an insignificant rising trend during that period (from 18.0, 19.7, 17.8 and 22.4% to 23.3%,  $P = 0.106$ ). The incidence of new-onset impaired fasting glucose or diabetes was significantly higher in obese or overweight patients than the others (56.9% versus 51.4%,  $P < 0.001$ ).

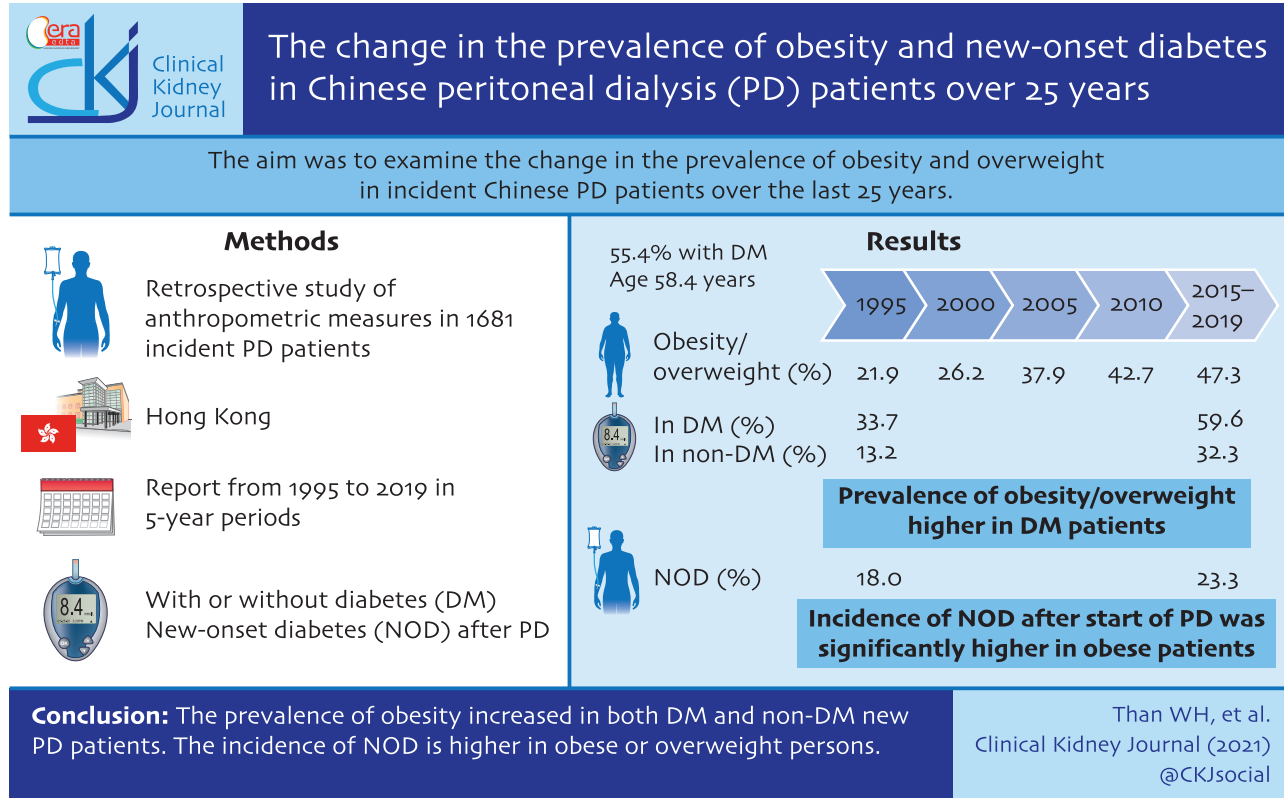
**Conclusions.** The prevalence of obesity has increased substantially in both diabetic and nondiabetic new PD patients in Hong Kong over the past 25 years. The incidence of new-onset diabetes was significantly higher in new PD patients with pre-existing obesity or overweight than those without obesity. The prognostic implication and impacts on the healthcare system deserve further studies.

Received: 9.3.2021; Editorial decision: 18.6.2021

© The Author(s) 2021. Published by Oxford University Press on behalf of ERA-EDTA.

This is an Open Access article distributed under the terms of the Creative Commons Attribution Non-Commercial License (<http://creativecommons.org/licenses/by-nc/4.0/>), which permits non-commercial re-use, distribution, and reproduction in any medium, provided the original work is properly cited. For commercial re-use, please contact [journals.permissions@oup.com](mailto:journals.permissions@oup.com)

## GRAPHICAL ABSTRACT



**Keywords:** atherosclerosis, metabolic syndrome, renal failure

## INTRODUCTION

The number of patients with chronic kidney disease (CKD) around the world is approximately 850 million [1, 2]. From 1990 to 2016, the global incidence and prevalence of CKD increased by 89% and 87%, respectively [3]. In many western countries, the prevalence of end-stage kidney disease (ESKD) has increased in the past two decades [4, 5], and the burden of ESKD will probably continue to increase in the coming years because of the change in demographic, clinical and lifestyle factors, and the improvements in the provision of dialysis facilities [6]. For example, it has been estimated that in the USA, the incidence rate of ESKD will rise 11–18% between 2015 and 2030, and the number of prevalent patients is expected to rise from 690 000 to 1 115 000 during this period [6]. More importantly, the incidence and prevalence of ESKD will probably increase more drastically for many developing countries [5].

In many developed countries, population changes in age, obesity and diabetes prevalence, and ESKD survival are believed to be the major causes of the increasing prevalence of ESKD [6]. Notably, the prevalence of obesity has increased in the general population over the past two decades [7]. Although the prevalence of obesity is highest in the USA, Europe and the Eastern Mediterranean region [7], urbanization of rural areas has resulted in an increase in the prevalence of obesity in many countries

[8–10]. In China, the prevalence of obesity rose from 6.5% in 1997 to 14.8% in 2011, and the prevalence of overweight rose from 29.1% to 41.0% during that period [11].

Morbid obesity in itself causes obesity-related glomerulopathy, but, more commonly, obesity may increase the rate of progression of CKD from other causes [12, 13]. It has been estimated that obesity contributes to 18.4% of new onset of advanced CKD [14], and, above 27 kg/m<sup>2</sup>, each unit increase in body mass index (BMI) leads to a 7% increase in the risk of development of ESKD among living kidney donors [15]. On the other hand, CKD also causes malnutrition and muscle wasting [16, 17]. Many CKD patients have progressive weight loss with a gradual decline in kidney function [18]. Given that complicated interaction, the change in the prevalence of obesity in new ESKD patients has not been well studied. The objective of this study is to describe the change in the prevalence of obesity in new ESKD patients in Hong Kong over the past two decades.

## MATERIALS AND METHODS

## Overall design

This is a retrospective analysis of data collected from two observational cohort studies, which were approved by the Joint Chinese University of Hong Kong—New Territories East Cluster Clinical Research Ethics Committee (approval numbers CREC-

2008.276 and CRE-2015.250). All study procedures were in compliance with the declaration of Helsinki. A total of 1681 incident adult peritoneal dialysis (PD) patients were reviewed. In essence, the two cohorts included all incident PD patients of our unit from 1995 to 2019. Patients who were planned to have elective living donor transplants or transferred to other renal centers within 6 months of PD were excluded. In general, anthropometric measures were performed at the time of PD catheter insertion, while dialysis adequacy and nutritional assessment, as well as fasting plasma glucose level, were performed around 4 weeks after patients were stable on PD. For this study, baseline demographic and clinical data, dialysis adequacy and nutritional assessment were collected by chart review.

### Assessment of anthropometric measures

The body weight was measured at baseline and, if the patient was still on PD, 2 years afterward. BMI was calculated by the conventional formula:

$$\text{BMI} = \text{body weight (kg)} / [\text{body height (m)}]^2$$

The BMI was further categorized according to the Asia Pacific version of the World Health Organization classification [19, 20]. In essence, BMI <18 kg/m<sup>2</sup> for underweight; between 18 and 22.9 kg/m<sup>2</sup> for normal weight; between 23 and 24.9 kg/m<sup>2</sup> for marginal overweight; between 25 and 29.9 kg/m<sup>2</sup> for overweight; and ≥30 kg/m<sup>2</sup> for obesity [19, 20].

### Dialysis adequacy, nutrition and inflammation markers

The method of dialysis adequacy assessment has been described previously [21]. In essence, 24-h urine and dialysate collection were performed for the calculation of the total K<sub>t</sub>/V. Nutritional status was represented by serum albumin level, subjective global assessment (SGA) overall score, comprehensive malnutrition-inflammation score (MIS), normalized protein nitrogen appearance (NPNA) and fat-free edema-free body mass (FEBM). For SGA, the four-item seven-point scoring system validated in PD patients was used [22]. The calculation of MIS included 10 items, each scored from 0 to 3, with a maximum score of 30 [23]. NPNA was calculated by the modified Bergstrom's formula [24]. FEBM was determined by the creatinine kinetic method according to the formula described by Forbes and Bruining [25] and further presented as the percentage of ideal body weight (IBW). We also measured the serum C-reactive protein (CRP) by a commercially available ultra-sensitive assay (Roche Diagnostics GmbH, Mannheim, Germany).

### Pulse wave velocity study and bio-impedance spectroscopy study

From 2005, arterial pulse wave velocity (PWV) and multi-frequency bio-impedance spectroscopy was performed for all new PD patients, generally around 1 month after they were stable on dialysis. PWV was measured by an automatic computerized recorder and analyzed using the Complior @ SP program (Artech Medical, France) by the method described previously [26]. We used the multi-frequency bioimpedance spectroscopy device (Body Composition Monitor, Fresenius Medical Care, Germany) as described previously [27, 28]. Data on lean tissue mass (LTM), adipose tissue mass (ATM) and volume of overhydration (OH) were retrieved for analysis in this study.

### Glucose study

We reviewed the fasting plasma glucose level 1 month after the patient was on a stable PD regimen, with a constant degree of glucose exposure from the PD solutions, and was clinically euvolemic. The glucose level was categorized according to the American Diabetes Association classification and has been described previously [29]. In essence, fasting blood glucose <5.6 mmol/L denotes normal; impaired fasting glucose for 5.6 to <7.0 mmol/L; diabetes for 7.0 to <11.1 mmol/L; and overt diabetes for ≥11.1 mmol/L.

### Statistical methods

Statistical analysis was performed by SPSS for Windows software version 25.0 (IBM, Armonk, NY, USA). The normality of the distribution was checked by the Shapiro–Wilk test. Summary statistics were described in frequency (%) for categorical variables and mean ± standard deviation or median (interquartile range) for continuous variables as appropriate. The longitudinal trend of baseline demographics and clinical data over different eras were compared by analysis of variance (ANOVA) and chi-square test. A value of P < 0.05 for the weighted linear term during ANOVA with linear polynomial contrast or that for the linear association in the chi-square test was considered statistically significant for linearity of the trend. Correlation or association between variables was checked by Spearman's rank correlation or Mann–Whitney U test as appropriate. The body weight or BMI between baseline and at Year 2 after baseline were compared by Student paired t-test. The prevalence or incidence and association between two categorical variables were calculated from Pearson's chi-square test or Fisher's exact test. Summary findings of Year 2 follow-up were calculated in the nested cohort. BMI category change was verified by McNemar's test. A value of P < 0.05 was considered statistically significant. All probabilities were two-tailed.

## RESULTS

We reviewed 1681 incident PD patients. Their mean age was 58.4 ± 12.5 years; 958 patients (57.0%) were men; and 931 patients (55.4%) were diabetic. Mean BMI at baseline was 24.2 ± 4.4 kg/m<sup>2</sup>, and mean body weight was 63.1 ± 13.7 kg. The trends for baseline demographics and clinical data during the study period are summarized in Table 1.

### Prevalence of obesity over the years

Both body weight and BMI increased in new PD patients over the years. Waist and hip circumferences also had similar trends during this period (Table 1). The distribution of BMI categories at the initiation of PD over the years is shown in Figure 1. From 1995–99 to 2015–19, the prevalence of baseline obesity in new PD patients increased from 3.1% to 11.6%, and that of overweight increased from 18.8% to 35.7%.

We further evaluated the trend of anthropometric measures and the prevalence of obesity for diabetic and nondiabetic patients separately (Table 2). In essence, both groups showed a significant trend of increasing body weight and BMI over the study period and the prevalence of overweight and obesity increased over the years in both diabetic and nondiabetic patients. Of note, the increase in the prevalence of overweight and obesity was more pronounced in diabetic patients (from 33.7% in 1995–99 to 59.6% in 2015–19) than nondiabetic ones (from 13.2% to 32.3% during the same period).

Table 1. The trend of baseline demographic and clinical data over the study period

Era	1995–99	2000–04	2005–09	2010–14	2015–19	P-value
No. of patients	223	329	330	342	457	
M:F	127:96	173:156	187:143	192:150	279:178	0.084 <sup>a</sup>
Age, years	54.0 ± 12.8	57.9 ± 13.5	58.3 ± 12.3	59.0 ± 12.0	60.8 ± 11.7	<0.001 <sup>b</sup>
Body weight, kg	58.9 ± 9.9	58.8 ± 11.3	62.6 ± 13.4	64.3 ± 14.6	67.6 ± 14.9	<0.001 <sup>b</sup>
Body height, cm	160.8 ± 7.6	159.6 ± 8.6	160.5 ± 8.4	161.3 ± 8.7	162.6 ± 8.2	<0.001 <sup>b</sup>
BMI, kg/m <sup>2</sup>	22.8 ± 3.5	23.1 ± 4.0	24.2 ± 4.3	24.5 ± 4.5	25.4 ± 4.5	<0.001 <sup>b</sup>
Waist circumference, cm	85.8 ± 6.3	89.6 ± 11.4	92.3 ± 11.2	94.2 ± 12.5	94.4 ± 12.2	<0.001 <sup>b</sup>
Hip circumference, cm	96.3 ± 4.3	94.4 ± 7.4	97.9 ± 8.4	99.3 ± 10.1	98.6 ± 11.8	0.004 <sup>b</sup>
Blood pressure, mmHg						
Systolic	145.2 ± 22.3	145.5 ± 21.9	141.8 ± 21.3	143.1 ± 21.1	147.9 ± 20.9	0.016 <sup>b</sup>
Diastolic	74.8 ± 11.8	76.4 ± 13.2	75.0 ± 12.8	76.5 ± 12.2	78.3 ± 13.3	0.004 <sup>b</sup>
Underlying renal diseases, n (%)						<0.001 <sup>a</sup>
Diabetic nephropathy	69 (30.9)	127 (38.6)	136 (41.2)	169 (49.4)	264 (57.8)	–
Glomerulonephritis	90 (40.4)	89 (27.1)	84 (25.5)	78 (22.8)	78 (17.1)	–
Hypertensive nephropathy	11 (4.9)	21 (6.4)	32 (9.7)	31 (9.1)	49 (10.7)	–
Polycystic kidney disease	9 (4.0)	10 (3.0)	10 (3.0)	8 (2.3)	9 (2.0)	–
Urological causes	9 (4.0)	9 (5.8)	12 (3.6)	15 (4.4)	7 (1.5)	–
Other specific causes	5 (2.2)	14 (3.9)	17 (5.1)	9 (2.6)	10 (2.2)	–
Idiopathic	30 (13.5)	50 (15.2)	39 (11.8)	32 (9.4)	40 (8.8)	–
Comorbidities, n (%)						–
Diabetes	95 (42.6)	160 (48.6)	182 (55.2)	207 (60.5)	287 (62.8)	<0.001 <sup>a</sup>
IHD	53 (23.8)	80 (24.3)	88 (26.7)	78 (22.8)	94 (20.6)	0.179 <sup>a</sup>
CVA	45 (20.2)	81 (24.6)	94 (28.5)	76 (22.2)	65 (14.2)	0.004 <sup>a</sup>
Charlson's score	5.2 ± 2.3	6.0 ± 2.7	6.2 ± 2.7	6.1 ± 2.6	6.0 ± 2.2	0.007 <sup>b</sup>
Residual GFR (mL/min/1.73 m <sup>2</sup> )	2.2 ± 1.9	3.6 ± 2.2	4.0 ± 2.8	3.6 ± 2.7	4.3 ± 3.4	<0.001 <sup>b</sup>

Data are presented as mean ± standard deviation or n (%). P-values for the trend of linearity; calculated by

<sup>a</sup>Chi-square test and

<sup>b</sup>ANOVA.

IHD, ischemic heart disease; CVA, cerebrovascular disease; GFR, glomerular filtration rate (1 month after dialysis).

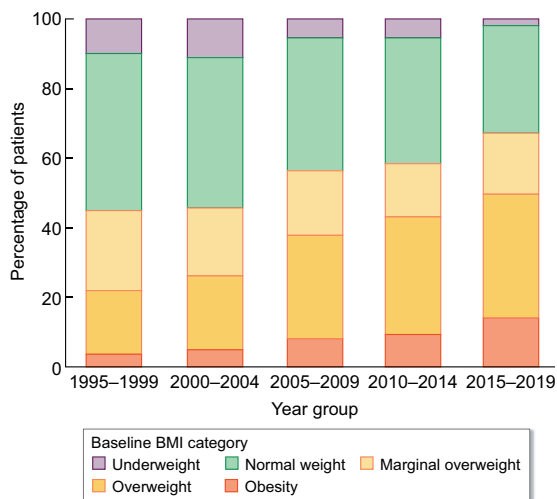


FIGURE 1: The distribution of BMI categories at the initiation of PD over different eras.

### Nutritional and biochemical status

The relation between BMI and nutritional and biochemical parameters was explored and summarized in Table 3. In essence, most nutritional parameters, including blood pressure,

fasting plasma glucose, lipid profile, serum albumin, subjective scoring and anthropometric measures by creatinine kinetics and multi-frequency bio-impedance, had modest but significant correlations with BMI, while total  $K_t/V$  and carotid-radial PWV had modest but significant inverse correlations with BMI. Notably, serum CRP level did not correlate with BMI.

The trends of baseline biochemical and nutritional parameters during the study period are summarized in Table 4. For the entire study cohort, there was a modest but significant improvement in some nutritional parameters (hemoglobin, MIS and NPNA) but not the others (serum albumin, SGA score and LTM by bioimpedance study). Notably, during the study period, there was a modest increase in absolute FEBM, but a marked reduction in the percentage of FEBM when adjusted for the IBW. When only obese or overweight patients were analyzed, most of the nutritional indices did not change during the study period, except for a slight increase in NPNA and reduction in the percentage of FEBM. The changes in baseline nutrition and biochemical status of diabetic and nondiabetic patients are further analyzed separately and summarized in Supplementary data, Table S1.

### Acquired glucose intolerance

From 1995–99 to 2014–19, the post-dialysis fasting plasma glucose of nondiabetic patients gradually increased (from  $5.9 \pm 2.0$ ,  $5.9 \pm 1.5$ ,  $5.8 \pm 1.3$  and  $6.1 \pm 1.7$  to  $6.4 \pm 2.2$  mmol/L for each consecutive 5-year period,  $P=0.016$  for linearity) The incidence of new-onset diabetes also showed a modest rising trend (from 18.0, 19.7, 17.8 and 22.4% to 23.3% for each consecutive 5-year period,  $P=0.106$  for linearity), but the trend did not reach

Table 2. The trend of anthropometric measures and the prevalence of obesity over the study period in new PD patients with and without diabetes

Year	Diabetic					Non-diabetic					P-value
	1995–99	2000–04	2005–09	2010–14	2015–19	1995–99	2000–04	2005–09	2010–14	2015–19	
No. of cases	95	159	182	207	287	128	169	148	135	170	<0.001 <sup>a</sup>
Body weight, kg	61.7 ± 10.0	61.4 ± 11.5	65.5 ± 13.8	68.0 ± 14.4	71.1 ± 14.9	56.8 ± 9.3	56.4 ± 10.7	59.0 ± 12.0	58.6 ± 13.0	61.7 ± 12.9	<0.001 <sup>b</sup>
BMI, kg/m <sup>2</sup>	24.0 ± 3.5	24.1 ± 3.9	25.3 ± 4.1	25.7 ± 4.5	26.5 ± 4.5	21.9 ± 3.1	22.1 ± 4.0	22.8 ± 4.2	22.7 ± 3.8	23.7 ± 4.1	<0.001 <sup>b</sup>
BMI category, n (%)											<0.001 <sup>a</sup>
Underweight	8 (8.4)	6 (3.8)	3 (1.6)	6 (2.9)	0 (0.0)	14 (10.9)	30 (17.8)	15 (10.1)	13 (9.6)	9 (5.3)	–
Normal weight	30 (31.6)	63 (39.6)	54 (29.7)	57 (27.5)	60 (20.9)	71 (55.5)	79 (46.7)	73 (49.3)	67 (49.6)	82 (48.2)	–
Marginal overweight	25 (26.3)	34 (21.4)	37 (20.3)	35 (16.9)	56 (19.5)	26 (20.3)	30 (17.8)	23 (15.5)	17 (12.6)	24 (14.1)	–
Overweight	28 (29.5)	45 (28.3)	70 (38.5)	81 (39.1)	123 (42.9)	14 (10.9)	26 (15.4)	29 (19.6)	35 (25.9)	40 (23.5)	–
Obese	4 (4.2)	11 (6.9)	18 (9.9)	28 (13.5)	48 (16.7)	3 (2.3)	4 (2.4)	8 (5.4)	3 (2.2)	15 (8.8)	–

Data are presented as mean ± standard deviation or n (%). P-values for the trend of linearity, calculated by

<sup>a</sup>chi-square test and<sup>b</sup>ANOVA.

statistical significance. There was a modest but significant correlation between post-dialysis fasting plasma glucose blood and baseline BMI ( $r=0.142$ ,  $P<0.001$ ) in nondiabetic patients, and the incidence of post-dialysis diabetes also increases with baseline BMI categories (Figure 2).

### Change in body weight after 2 years

After 2 years, 297 patients died, 98 had kidney transplants, 88 were converted to hemodialysis and 33 were transferred to other centers. There were 954 patients who remained on PD in our center and the change in their body weight was explored. For this nested cohort, their average body weight increased from  $61.7 \pm 13.2$  to  $63.0 \pm 13.3$  kg (paired Student's  $t$ -test,  $P<0.001$ ), and BMI increased from  $23.9 \pm 4.3$  to  $24.4 \pm 4.4$  kg/m<sup>2</sup>,  $P<0.001$ . The change in BMI category over 2 years is summarized in Table 5. Specifically, 638 patients (66.9%) remained in the same category, 102 patients (10.7%) had down-grading of their BMI categories and 214 patients (22.4%) had up-grading in their BMI categories.

From 1995–99 to 2014–19, the mean BMI change after 2 years of PD gradually increased ( $0.01 \pm 0.09$ ,  $0.01 \pm 0.07$ ,  $0.02 \pm 0.07$ ,  $0.03 \pm 0.10$  and  $0.04 \pm 0.09$  kg/m<sup>2</sup> for each consecutive 5-year period respectively,  $P<0.001$  for linearity). The mean BMI change was slightly higher for diabetic than nondiabetic patients ( $0.03 \pm 0.08$  versus  $0.02 \pm 0.08$  kg/m<sup>2</sup>,  $P=0.027$ ).

## DISCUSSION

In this study, we found that obesity is increasingly prevalent in new PD patients of Hong Kong over the past 25 years, and this phenomenon is present in both diabetic and nondiabetic patients. The incidence of new-onset diabetes was also significantly higher in new PD patients with pre-existing obesity or overweight than those without obesity.

The increasing prevalence of obesity in new PD patients that we observed is in line with that of the general population around the world [8–10]. In China, the prevalence of obesity rose from 6.5% in 1997 to 14.8% in 2011, and the prevalence of overweight rose from 29.1% to 41.0% during that period [11], which is slightly higher than that observed in our patients. Although the link between obesity and the risk of ESKD was well documented [12], it is probable that another group of patients with advanced CKD develop muscle wasting and protein-energy malnutrition [16, 17], which results in a lower prevalence of obesity as compared with the general population.

In our study, an increasing prevalence of overweight or obesity is present in both diabetic and nondiabetic new PD patients. Although the relative increase was more marked in the nondiabetic group (from 13.2% to 32.3%, i.e. relative increase by 144.7%) than the diabetic ones (from 33.7% to 59.6%, i.e. relative increase by 76.9%), the absolute magnitude of increase was more pronounced in the diabetic group (25.9% versus 19.1%). In other words, our observation suggests that obesity was increasingly more common among diabetic patients with advanced CKD. One possible reason is that a higher proportion of diabetes is caused by obesity and insulin resistance nowadays [30]. On the other hand, it is also possible that insulin therapy, which commonly causes weight gain, is increasingly being used for patients with advanced diabetic kidney disease because of the emphasis on tight diabetic control in the recent decade [31, 32].

Our finding that obesity is increasingly more frequent in new Chinese PD patients implies that a fixed PD regimen may result in inadequate dialysis in a considerable portion of

Table 3. The relation between baseline BMI and clinical and biochemical parameters

Variables	BMI		BMI category/obesity group	
	Spearman's r	P-value	P of one-way ANOVA	P for trend of linearity
Age	0.036	0.137	<0.001	0.014
Systolic blood pressure	0.137	<0.001	<0.001	<0.001
Diastolic blood pressure	-0.001	0.959	0.002	0.694
Charlson's comorbidity	0.161	<0.001	<0.001	<0.001
Serum CRP	0.007	0.832	0.235	0.803
Glucose profile				
Fasting blood glucose	0.239	<0.001	<0.001	<0.001
HbA1c	0.194	<0.001	0.015	0.001
Serum lipid profile				
Cholesterol	-0.206	<0.001	<0.001	<0.001
Triglyceride	0.067	0.063	0.393	0.083
LDL	-0.155	<0.001	<0.001	<0.001
HDL	-0.347	<0.001	<0.001	<0.001
Dialysis adequacy				
Total K <sub>v</sub> /V	-0.150	<0.001	<0.001	<0.001
Residual GFR	0.229	<0.001	<0.001	<0.001
Nutrition status				
Serum albumin	0.045	0.067	0.095	0.052
Hemoglobin	-0.014	0.560	0.529	0.798
NPNA	0.350	<0.001	<0.001	<0.001
SGA	0.093	0.007	0.110	0.022
MIS	-0.133	<0.001	0.001	<0.001
FEBM (absolute)	0.021	0.380	0.409	0.679
FEBM (% of IBW)	-0.442	<0.001	<0.001	<0.001
Bioimpedance spectroscopy				
OH	0.260	<0.001	<0.001	<0.001
Lean total mass	0.304	<0.001	<0.001	<0.001
ATM	0.618	<0.001	<0.001	<0.001
Arterial PWV				
Carotid-to-radial	-0.124	0.001	0.008	0.001
Carotid-to-femoral	0.012	0.720	0.264	0.878

LDL, low-density lipoprotein; HDL, high-density lipoprotein; GFR, glomerular filtration rate.

patients. The consideration is particularly important in this part of the world, where a routine three 2-l exchange is used [33, 34]. Theoretically, obese patients require a higher volume of PD exchange to achieve adequate solute clearance, particularly when their residual renal function is gradually lost. In fact, this is probably the reason that the survival advantage of PD (as compared with hemodialysis) is lost in obese patients, and they have a higher risk than nonobese patients of being converted to hemodialysis [35].

In addition to studying the change in body weight, we tried to explore the change in nutritional status and body composition in our new PD patients over the years, as summarized in Table 4. Although the data appear complicated, the general trend was that some nutritional parameters but not others improved over time. Notably, the increase in skeletal muscle mass (as represented by FEBM by creatinine kinetics and LTM by bioimpedance study) was only modest, suggesting that the increase in body weight was largely accounted for by adipose tissue and probably fluid retention. It is also interesting to note that although there is evidence from Table 4 that the magnitude of fluid overload increased in the new PD patients over the years, the residual renal function actually increased during the same period (Table 1), arguing against the possibility of delayed initiation of dialysis.

In this study, the incidence of new-onset diabetes showed a modest but insignificant increasing trend in new PD patients over the years. Since new-onset diabetes is significantly more common in new PD patients with pre-existing obesity, the increasing prevalence of obese PD patients probably explains the trend of new-onset diabetes. Our observation is consistent with the previous reports [36, 37]. For example, Dong et al. [37] showed that a high BMI was a major contributing factor to new-onset diabetes and impaired glucose tolerance in PD patients. The absolute incidence of new-onset diabetes was much higher in this study than in previous reports [29, 36], which probably reflects the increase in the incidence in recent years. Although new-onset diabetes is well reported to be associated with a poor outcome in PD patients [29], it remains unknown whether the use of a glucose-free PD regimen would reduce the risk of new-onset diabetes or its long-term clinical outcome. Nonetheless, our result suggests that routine screening for new-onset impaired fasting glucose should be performed in incident PD patients, preferably 4–8 weeks after they are stabilized on dialysis.

There are several strengths but also inadequacies of this study. The period of review was substantial, and because of the PD-first policy in Hong Kong, our result basically represents the entire population of new ESKD patients in Hong Kong. With the

Table 4. Baseline biochemical and nutritional data over the study period

Year	All patients					Patients with overweight or obesity					P-value	
	1995-99	2000-04	2005-09	2010-14	2015-19	P-value	1995-99	2000-04	2005-09	2010-14		2015-19
No. of cases	223	329	330	342	457	0.084 <sup>a</sup>	49	86	125	147	226	<0.001 <sup>a</sup>
Hemoglobin, g/dL	9.3 ± 1.5	9.1 ± 1.5	9.4 ± 4.4	9.4 ± 1.5	9.8 ± 1.5	<0.001 <sup>b</sup>	9.1 ± 1.7	8.9 ± 1.3	9.7 ± 6.8	9.4 ± 1.4	9.6 ± 1.5	0.172 <sup>b</sup>
Albumin, g/L	27.9 ± 4.6	31.1 ± 5.6	34.2 ± 4.8	34.3 ± 4.9	29.1 ± 5.7	0.104 <sup>b</sup>	28.4 ± 4.2	31.1 ± 4.9	34.3 ± 4.5	34.9 ± 4.7	29.5 ± 5.5	0.235 <sup>b</sup>
SGA	5.2 ± 0.9	5.4 ± 1.0	5.7 ± 1.0	5.2 ± 0.9	5.4 ± 0.8	0.211 <sup>b</sup>	5.8 ± 0.5	5.2 ± 1.0	5.8 ± 1.0	5.4 ± 0.8	5.5 ± 0.8	0.414 <sup>b</sup>
MIS	9.4 ± 2.7	7.4 ± 3.4	6.3 ± 3.8	7.0 ± 3.6	5.5 ± 3.2	0.001 <sup>b</sup>	10.0 ± 2.8	7.1 ± 3.1	6.1 ± 3.3	6.2 ± 3.1	6.0 ± 3.3	0.125 <sup>b</sup>
NFNA, g/kg/day	0.9 ± 0.2	1.1 ± 0.3	1.2 ± 0.3	1.1 ± 0.2	1.2 ± 0.3	<0.001 <sup>b</sup>	1.1 ± 0.3	1.2 ± 0.3	1.3 ± 0.2	1.2 ± 0.3	1.3 ± 0.3	0.004 <sup>b</sup>
FEBM												
Absolute, kg	25.5 ± 7.0	26.8 ± 8.0	26.4 ± 8.1	27.1 ± 9.7	27.2 ± 9.1	0.025 <sup>b</sup>	25.3 ± 6.7	26.7 ± 8.6	27.3 ± 8.4	26.5 ± 7.4	27.4 ± 9.5	0.226 <sup>b</sup>
% of IBW	48.8 ± 12.0	42.3 ± 10.3	40.3 ± 10.0	41.1 ± 12.0	38.0 ± 10.6	<0.001 <sup>b</sup>	43.4 ± 10.7	37.1 ± 10.9	35.8 ± 8.3	36.5 ± 8.5	35.1 ± 9.9	<0.001 <sup>b</sup>
Serum lipid, mmol/L												
Total cholesterol	5.2 ± 1.6	5.2 ± 1.2	5.0 ± 1.3	4.9 ± 1.3	4.7 ± 1.7	0.001 <sup>b</sup>	3.8 ± 0.3	4.7 ± 0.9	4.7 ± 1.4	4.7 ± 1.4	4.3 ± 1.2	0.337 <sup>b</sup>
Triglyceride	2.0 ± 2.1	2.0 ± 1.4	1.9 ± 1.2	1.8 ± 1.3	1.6 ± 1.4	0.012 <sup>b</sup>	1.1 ± 0.5	2.2 ± 1.5	2.0 ± 1.4	1.9 ± 1.4	1.6 ± 1.0	0.143 <sup>b</sup>
LDL	3.0 ± 1.1	3.0 ± 1.0	2.9 ± 1.0	2.8 ± 1.1	2.6 ± 1.2	0.058 <sup>b</sup>	2.2 ± 0.1	2.7 ± 1.0	2.7 ± 1.0	2.7 ± 1.1	2.6 ± 1.4	0.909 <sup>b</sup>
HDL	1.5 ± 0.5	1.4 ± 0.6	1.4 ± 0.9	1.3 ± 0.6	1.4 ± 0.9	0.278 <sup>b</sup>	1.2 ± 0.5	1.2 ± 0.3	1.2 ± 0.4	1.3 ± 0.8	1.4 ± 1.3	0.248 <sup>b</sup>
Bio-impedance	-	-	-	-	-	-	-	-	-	-	-	-
OH, L	-	-	3.4 ± 2.3	3.9 ± 3.1	4.9 ± 3.9	<0.001 <sup>b</sup>	-	-	3.9 ± 2.6	4.4 ± 3.4	5.7 ± 4.1	0.001 <sup>b</sup>
ATM, kg	-	-	21.3 ± 9.0	20.3 ± 11.0	21.7 ± 11.4	0.169 <sup>b</sup>	-	-	24.7 ± 8.8	26.9 ± 11.6	27.0 ± 12.3	0.688 <sup>b</sup>
LTM, kg	-	-	38.8 ± 10.1	38.9 ± 10.8	39.2 ± 10.1	0.657 <sup>b</sup>	-	-	36.3 ± 7.0	40.8 ± 11.5	42.3 ± 10.8	0.065 <sup>b</sup>
PWV, cm/s	-	-	-	-	-	-	-	-	-	-	-	-
Carotid-to-radial	-	-	10.1 ± 1.5	10.6 ± 1.7	10.2 ± 1.7	0.908 <sup>b</sup>	-	-	10.1 ± 1.6	10.5 ± 1.6	10.0 ± 1.7	0.149 <sup>b</sup>
Carotid-to-femoral	-	-	10.3 ± 2.3	11.4 ± 2.5	11.1 ± 1.9	0.017 <sup>b</sup>	-	-	10.8 ± 2.4	11.5 ± 2.4	10.9 ± 1.9	0.472 <sup>b</sup>

Data are presented as mean ± standard deviation. P-values for the trend of linearity, calculated by <sup>a</sup>chi-square test and <sup>b</sup>ANOVA; LDL, low-density lipoprotein; HDL, high-density lipoprotein.

Table 5. Change in the BMI category after 24 months

24 months	Baseline				
	Underweight, n (%)	Normal weight, n (%)	Marginal overweight, n (%)	Overweight, n (%)	Obesity, n (%)
Underweight	38 (4.0)	17 (1.8)	0	1 (0.1)	0
Normal weight	28 (2.9)	275 (28.8)	37 (3.9)	9 (0.9)	1 (0.1)
Marginal overweight	1 (0.1)	64 (6.7)	80 (8.4)	27 (2.8)	1 (0.1)
Overweight	0	20 (2.1)	67 (7.0)	194 (20.3)	9 (0.9)
Obesity	0	0	2 (0.2)	32 (3.4)	51 (5.3)

McNemar–Bowker test,  $P < 0.001$ .

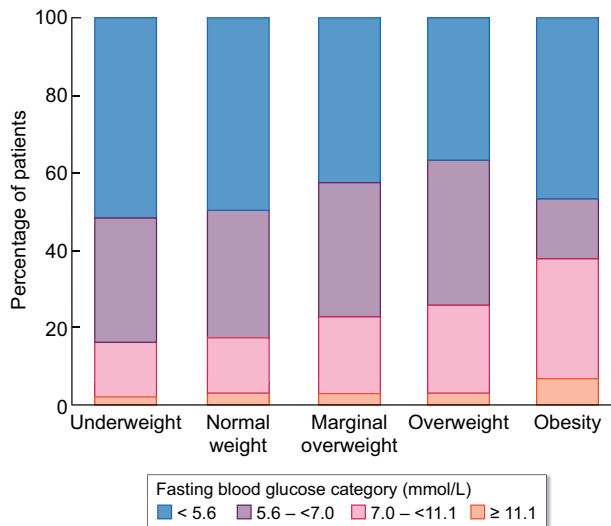


FIGURE 2: The distribution of post-dialysis fasting plasma glucose categories in incident nondiabetic PD patients according to their baseline BMI categories.

well-established hospital computer database system, the data on anthropometric measures and biochemistry were extensive and missing data were minimized. Unfortunately, because of the limitations in our database, we only report BMI at baseline and after 2 years of PD. In theory, it would be interesting to analyze the rate of body weight gain and probably the fluctuation of body weight within 2 years. Furthermore, body weight or BMI are crude measures of obesity. Recent evidence suggests that subcutaneous and visceral adipose tissue may have different physiological implications [17, 38, 39], and fluid retention may confound the measurement of body weight. Notably, data on body composition (multi-frequency bio-impedance) and arterial PWV were not available before 2005 and it was, at least theoretically, possible that the increase in body weight of new PD patients over the years was the result of more severe fluid retention.

Our results lead to several questions that require further study. As discussed above, what we actually showed was a progressive increase in body weight and BMI in new PD patients. The change in BMI after 2 years is primarily driven by the change in body weight, but the exact changes in body composition and ATM have not been evaluated. Although the prognostic impact of obesity in PD patients has been examined by multiple groups [17, 40], the prevalence and impact of body weight change after started on PD have not been extensively studied.

The complex interactions between body fat mass, fluid accumulation and cardiovascular disease in PD patients also deserve further study.

## CONCLUSION

The incidence of obesity increased substantially in both diabetic and nondiabetic new PD patients in Hong Kong over the past 25 years. The incidence of new-onset diabetes was significantly higher in new PD patients with pre-existing obesity or overweight than those without obesity. Their prognostic implications and impacts on the healthcare system deserve further studies.

## SUPPLEMENTARY DATA

Supplementary data are available at [ckj](#) online.

## FUNDING

This study was supported by the Richard Yu Chinese University of Hong Kong (CUHK) PD Research Fund, and CUHK research accounts 6905134 and 7105912. The funders had no role in study design, data collection and analysis, decision to publish or preparation of the manuscript.

## CONFLICT OF INTEREST STATEMENT

C.-C.S. receives a research grant and consultancy from Baxter Healthcare and is a member of the *Clinical Kidney Journal* editorial board. The authors declare no other conflict of interest. The results presented in this article have not been published previously in whole or part, except in abstract format.

## REFERENCES

1. Bello AK, Levin A, Lunney M *et al*. Status of care for end stage kidney disease in countries and regions worldwide: international cross sectional survey. *BMJ* 2019; 367: l5873
2. Jager KJ, Kovesdy C, Langham R *et al*. A single number for advocacy and communication—worldwide more than 850 million individuals have kidney diseases. *Nephrol Dial Transplant* 2019; 34: 1803–1805
3. Xie Y, Bowe B, Mokdad AH *et al*. Analysis of the global burden of disease study highlights the global, regional, and national trends of chronic kidney disease epidemiology from 1990 to 2016. *Kidney Int* 2018; 94: 567–581



4. Saran R, Li Y, Robinson B et al. US renal data system 2014 annual data report: epidemiology of kidney disease in the United States. *Am J Kidney Dis* 2015; 66: S1–S305
5. Wetmore JB, Collins AJ. Global challenges posed by the growth of end-stage renal disease. *Ren Replace Ther* 2016; 2: 15
6. McCullough KP, Morgenstern H, Saran R et al. Projecting ESRD incidence and prevalence in the United States through 2030. *J Am Soc Nephrol* 2019; 30: 127–135
7. World Health Organization. *Noncommunicable Diseases Country Profiles*. Geneva, Switzerland: World Health Organization, 2018 <https://www.who.int/nmh/publications/ncd-profiles-2018/en/> (21 December 2020, date last accessed)
8. Blüher M. Obesity: global epidemiology and pathogenesis. *Nat Rev Endocrinol* 2019; 15: 288–298
9. Malik VS, Willet WC, Hu FB. Nearly a decade on - trends, risk factors and policy implications in global obesity. *Nat Rev Endocrinol* 2020; 16: 615–616
10. NCD Risk Factor Collaboration (NCD-RisC). Rising rural body-mass index is the main driver of the global obesity epidemic in adults. *Nature* 2019; 569: 260–264
11. Chen Y, Peng Q, Yang Y et al. The prevalence and increasing trends of overweight, general obesity, and abdominal obesity among Chinese adults: a repeated cross-sectional study. *BMC Public Health* 2019; 19: 1293
12. Kramer HJ, Saranathan A, Luke A et al. Increasing body mass index and obesity in the incident ESRD population. *J Am Soc Nephrol* 2006; 17: 1453–1459
13. Than WH, Chan GCK, Ng JKC et al. The role of obesity on chronic kidney disease development, progression, and cardiovascular complications. *Adv Biomarker Sci Technol* 2020; 2: 24–34
14. Tsujimoto T, Sairenchi T, Iso H et al. The dose-response relationship between body mass index and the risk of incident stage  $\geq 3$  chronic kidney disease in a general Japanese population: the Ibaraki prefectural health study (IPHS). *J Epidemiol* 2014; 24: 444–451
15. Locke JE, Reed RD, Massie A et al. Obesity increases the risk of end-stage renal disease among living kidney donors. *Kidney Int* 2017; 91: 699–703
16. Mak RH, Ikizler AT, Kovesdy CP et al. Wasting in chronic kidney disease. *J Cachexia Sarcopenia Muscle* 2011; 2: 9–25
17. Ekart R, Hojs R. Obese and diabetic patients with end-stage renal disease: peritoneal dialysis or hemodialysis? *Eur J Intern Med* 2016; 32: 1–6
18. Capizzi I, Teta L, Vigotti FN et al. Weight loss in advanced chronic kidney disease: should we consider individualised, qualitative, ad libitum diets? A narrative review and case study. *Nutrients* 2017; 9: 1109
19. Lim JU, Lee JH, Kim JS et al. Comparison of World Health Organization and Asia-Pacific body mass index classifications in COPD patients. *Int J Chron Obstruct Pulmon Dis* 2017; 12: 2465–2475
20. WHO Expert Consultation. Appropriate body-mass index for Asian populations and its implications for policy and intervention strategies. *Lancet* 2004; 363: 157–163
21. Szeto CC, Wong TY, Chow KM et al. Oral sodium bicarbonate for the treatment of metabolic acidosis in peritoneal dialysis patients – a randomized placebo-control trial. *J Am Soc Nephrol* 2003; 14: 2119–2126
22. Enia G, Sicus C, Alati G, Zoccali C. Subjective global assessment of nutrition in dialysis patients. *Nephrol Dial Transplant* 1993; 8: 1094–1098
23. Kalantar-Zadeh K, Kopple JD, Block G et al. A malnutrition-inflammation score is correlated with morbidity and mortality in maintenance hemodialysis patients. *Am J Kidney Dis* 2001; 38: 1251–1263
24. Bergstrom J, Heimbürger O, Lindholm B. Calculation of the protein equivalent of total nitrogen appearance from urea appearance. Which formulas should be used? *Perit Dial Int* 1998; 18: 467–473
25. Forbes GB, Bruining GJ. Urinary creatinine excretion and lean body mass. *Am J Clin Nutr* 1976; 29: 1359–1366
26. Szeto CC, Kwan BC, Chow KM et al. Prognostic value of arterial pulse wave velocity in peritoneal dialysis patients. *Am J Nephrol* 2012; 35: 127–133
27. Kwan BC, Szeto CC, Chow KM et al. Bioimpedance spectroscopy for the detection of fluid overload in Chinese peritoneal dialysis patients. *Perit Dial Int* 2014; 34: 409–416
28. Ng JK, Kwan BC, Chow KM et al. Asymptomatic fluid overload predicts survival and cardiovascular event in incident Chinese peritoneal dialysis patients. *PLoS One* 2018; 13: e0202203
29. Szeto CC, Chow KM, Kwan BC et al. New-onset hyperglycemia in nondiabetic Chinese patients started on peritoneal dialysis. *Am J Kidney Dis* 2007; 49: 524–532
30. Bhupathiraju SN, Hu FB. Epidemiology of obesity and diabetes and their cardiovascular complications. *Circ Res* 2016; 118: 1723–1735
31. American Diabetes Association. Standards of medical care in diabetes 2009. *Diabetes Care* 2009; 32 (Suppl 1): S13–S61
32. Oellgaard J, Gæde P, Rossing P et al. Intensified multifactorial intervention in type 2 diabetics with microalbuminuria leads to long-term renal benefits. *Kidney Int* 2017; 91: 982–988
33. Szeto CC, Wong TY, Leung CB et al. Importance of dialysis adequacy in mortality and morbidity of Chinese CAPD patients. *Kidney Int* 2000; 58: 400–407
34. Szeto CC, Wong TY, Chow KM et al. Impact of dialysis adequacy on the mortality and morbidity of anuric Chinese patients receiving continuous ambulatory peritoneal dialysis. *J Am Soc Nephrol* 2001; 12: 355–360
35. Obi Y, Streja E, Mehrotra R et al. Impact of obesity on modality longevity, residual kidney function, peritonitis, and survival among incident peritoneal dialysis patients. *Am J Kidney Dis* 2018; 71: 802–813
36. Yarragudi R, Gessl A, Vychytil A. New-onset diabetes mellitus in peritoneal dialysis and hemodialysis patients: frequency, risk factors, and prognosis-A review. *Ther Apher Dial* 2019; 23: 497–506
37. Dong J, Yang ZK, Chen Y. Older age, higher body mass index and inflammation increase the risk for new-onset diabetes and impaired glucose tolerance in patients on peritoneal dialysis. *Perit Dial Int* 2016; 36: 277–283
38. Bays HE, González-Campoy JM, Bray GA et al. Pathogenic potential of adipose tissue and metabolic consequences of adipocyte hypertrophy and increased visceral adiposity. *Expert Rev Cardiovasc Ther* 2008; 6: 343–368
39. Johnson DW. What is the optimal fat mass in peritoneal dialysis patients? *Perit Dial Int* 2007; 27 (Suppl 2): S250–S254
40. Ladhani M, Craig JC, Irving M et al. Obesity and the risk of cardiovascular and all-cause mortality in chronic kidney disease: a systematic review and meta-analysis. *Nephrol Dial Transplant* 2017; 32: 439–449