



RESEARCH

Open Access

Significance of ER β expression in different molecular subtypes of breast cancer

Liyong Guo^{1*}, Jie Meng¹, Dilimina Yilamu¹, Adina Jakulin¹, Minggang Fu¹, Bowei Wang² and Gulinaer Abulajiang²

Abstract

Purpose: This study is to investigate the estrogen receptor β (ER β) expression in molecular subtypes of breast cancer and clinic significance of ER β expression.

Method: The ER β expression was detected in 730 cases of breast cancer tissue specimens by immunohistochemistry. Twenty-one patients were censored during 2–10 years follow-up. The difference in ER β expression was analyzed by Pearson Chi-square Test. Its correlation with estrogen receptor α (ER α), progesterone receptor (PR) and human epidermal growth factor receptor 2 (Her-2) was analyzed by Spearman rank correlation. The accumulative tumor-free survival rate was calculated by Kaplan-Meier method and difference in survival rate was analyzed by Log-rank test. Cox regression was used for multi-factor analysis.

Result: The ER β expression was significantly different among the molecular subtypes of breast cancer ($P < 0.05$). The ER β expression in breast cancer was positively correlated with Her-2 ($P < 0.05$) while it had no correlation with ER α and Her-2. The expression of ER α was negatively correlated with Her-2 ($P < 0.01$) whereas positively correlated with PR ($P < 0.01$). The expression of PR was negatively correlated with Her-2 ($P < 0.05$). The tumor-free survival rate in patients with positive ER β expression was significantly lower than that in patients with negative ER β expression.

Conclusion: Positive ER β expression is a poor prognostic factor of breast cancer.

Virtual slides: The virtual slides for this article can be found here: <http://www.diagnosticpathology.diagnomx.eu/vs/1084557586106833>

Keywords: Breast cancer, ER β , Molecular subtypes

Introduction

Estrogen receptor (ER) and progesterone receptor (PR) are steroid hormone receptors that belong to the nuclear receptor superfamily. Clinically, ER and PR are hormone dependent receptors of cancer cells. The human epidermal growth factor receptor 2 gene (Her-2) encodes a trans-membrane receptor-like protein, which has tyrosine kinase activity. ER, PR and Her-2 play important roles in prognosis of breast cancer. There are two types of ER, which are ER α and ER β . ER β was cloned in 1996 by Kuiper et al. [1] from the cDNA library of rat prostate and ovary. ER α and ER β both play important roles in regulating the biological function of the estrogen [2]. It is reported that ER β has prognostic value in breast cancer [3,4]. For example,

Jensen et al. [5] reported that ER β expression was closely related to tumor growth and invasion of breast cancer and was a prognostic factor for breast cancer.

Based on genetic profiles of ER α , PR and Her-2, Perou et al. [6] proposed the molecular subtypes of breast cancer in 2000, which included the luminal subtype, Her-2 over-expression type, basal-like type and normal breast-like type. In 2003, Sorlie et al. [7] further divided the luminal subtype into luminal A type and luminal B type. It is well-known that molecular subtypes are closely related to breast cancer prognosis. Luminal subtype of breast cancer has better prognosis than other subtypes and luminal A subtype has the best prognosis of all molecular subtypes [8]. However, in clinical practice, expression of ER, PR and HER-2 evaluated by immunohistochemistry are used to identify various breast cancer subtypes. Evidence indicates that subtypes of breast cancer identified by DNA microarray may approximately relate to expression of commonly

* Correspondence: gejsy318@126.com

¹Department of Breast, Digestive & Vascular Center, First Affiliated Hospital of Xinjiang Medical University, No. 137, South Liyushan Road, Xinjiang 830054, P. R. China

Full list of author information is available at the end of the article

used markers in breast cancers: ER, PR and HER-2 status [9]. Moreover, immunohistochemistry is much easier and cheaper than gene microarray, but provides significant information to discriminate good and poor prognosis breast cancer [10-12]. Thus, we used expression of ER, PR and HER-2 to identify molecular subtypes of breast cancer in this study.

In this study, the ER β expression was examined by immunohistochemical staining in 730 cases of breast cancer. The ER β expression was analyzed in different molecular subtypes of breast cancer. And the correlation of ER β with ER α , PR and Her-2 was also studied. Additionally, the accumulative tumor-free survival rate of breast cancer patients with different expression levels of ER β was further compared. Moreover, the prognostic role of ER β in breast cancer was evaluated by Cox regression analysis.

Materials and methods

Samples

Seven hundred and thirty cases of patients with pathologically confirmed breast cancers were enrolled in this study. They were all diagnosed and treated in the First Affiliated Hospital of Xinjiang Medical University from January 2000 to December 2010. They had invasive ductal carcinoma, with clinical stages of stage 0, stage I and stage II. Their clinical data were complete and were shown in Table 1. The patients were followed up for 2 to 10 years. During the follow-up time, 21 patients were censored. Patients died of other diseases, lost to follow-up at the time of last contact or before study cut-off were censored.

Prior written and informed consent was obtained from every patient and the study was approved by the ethics review board of Xinjiang Medical University.

Table 1 Clinical data of breast cancer patients used in this study (n (%))

Clinical features	Cases (%)	Clinical features	Cases (%)
Menses		Staging	
Menostasis	355 (50.1)	Stage 0	218 (30.7)
Non-menostasis	354 (49.9)	Stage 1	339 (47.8)
Age (years)		Stage 2	152 (21.4)
≤ 39	164 (23.1)	Chemotherapy	
≥ 40 ~ 59	399 (56.3)	Yes	595 (83.9)
≥ 60	146 (20.6)	No	114 (16.1)
Tumor size (cm)		Radiotherapy	
≤ 2	329 (46.4)	Yes	454 (64.0)
> 2 - ≤ 3	380 (53.6)	No	255 (36.0)
Lymph node metastasis		Endocrine therapy	
L0	385 (54.3)	Yes	290 (40.9)
L1~4	324 (45.7)	No	419 (59.1)

Immunohistochemical staining

Breast cancer tissue specimens were fixed in 10% formaldehyde for 24 h and then embedded in paraffin. Tissue specimens were sliced into 3 μ m sections and placed in a 70°C oven overnight. Sections were then dewaxed in xylene for 20 min and rehydrated in graded alcohols. Endogenous peroxidase was blocked by using a 3% solution of hydrogen peroxide for 10 min. For antigen retrieval, sections were placed in EDTA antigen retrieval solution and boiled for 20 min. After naturally cooling to room temperature and washing with PBS, sections were incubated with primary antibodies of polyclonal rabbit anti-human ER β antibody (BY-02101, Shanghai Yueyan Biological Technology, CO., Ltd., Shanghai, China), monoclonal rabbit anti-human ER α antibody (ZA-0102, Beijing Zhong Shan-Golden Bridge Biological Technology CO., Ltd., Beijing, China), monoclonal rabbit anti-human PR antibody (ZA-0255, Beijing Zhong Shan-Golden Bridge Biological Technology CO., Ltd., Beijing, China) and monoclonal rabbit anti-human Her-2 antibody (4B5, Ventana Medical Systems Inc., Tuscon, Arizona, USA) at 37°C for 1 h in the dark. Then sections were incubated with secondary antibodies of HRP conjugated anti-rabbit IgG at 37°C for 30 min in the dark. After antibody incubation, sections were developed with DAB chromogenic reagent for 5 min and counterstained with haematoxylin. After hydrochloric acid differentiation and dehydration in graded alcohols, sections were mounted with neutral gum. Positive samples were used as the positive controls. In the negative controls, the secondary antibodies were replaced with PBS.

Determination of ER β , ER α , PR and Her-2 expression levels

The immunohistochemical staining results were evaluated by an experienced pathologist. Cells with brown staining were ER β positive cells. Five fields at high-magnification were randomly taken. ER β positive rate was the ratio of the number of ER β positive cells to the total number of cells in each field. ER β positive rate less than 1% was defined as ER β negative (ER β (-)). A positive rate between 1% and 10% was defined as ER β weak positive (ER β (+)). ER β positive rate between 10% and 50% was defined as ER β positive (ER β (++)). ER β positive rate over than 50% was ER β strong positive (ER β (+++)).

ER α and PR positive cells were also stained brown. According to the "Guideline Recommendations for Immunohistochemical Testing of Estrogen and Progesterone Receptors in Breast Cancer" published by American Society of Clinical Oncology (ASCO) and College of American Pathologists (CAP) in 2010, a positive staining rate of > 1% was considered positive expression.

Based on "Her-2 Detection Guide" published by Chinese Journal of Pathology in 2009, positive staining of Her-2 was defined as: 0, no staining; 1+: weak or incomplete cell

membrane staining; 2+: > 10% of invasive cancer cells showing weak to moderate intensity with complete but nonuniform membrane staining or < 30% of invasive cancer cells showing strong, complete and uniform membrane staining; 3+: > 30% of invasive cancer cells showing strong, complete and uniform membrane staining.

Statistical analysis

SPSS17.0 software was used for statistical analysis. Expression difference was analyzed by Pearson chi-square test and correlation among different expressions was assessed by Spearman's Rank-order correlation. The accumulative tumor-free survival rate was calculated using the Kaplan-Meier method. The difference in tumor-free survival between groups with different ER β expression was compared by Log-rank test. Analysis of multivariate prognostic factors was performed by Cox regression model. $P < 0.05$ was considered statistically significant.

Results

ER β , ER α , PR and Her-2 expression in breast cancer

To determine the expression of ER β , ER α , PR and Her-2 in breast cancer tissue, immunohistochemical staining was performed. Representative results were shown in Figure 1. Cells with brown granules were positively stained. As described in "Materials and Methods", ER β expression levels were divided into ER β (-) (Figure 1A), ER β (+) (Figure 1B), ER β (++) (Figure 1C) and ER β (+++) (Figure 1D). ER α negative and positive expression was shown in Figure 1E and Figure 1F. PR negative and positive expression was shown in Figure 1G and Figure 1H. Her-2 negative and positive expression was shown in Figure 1I and Figure 1J.

Molecular subtypes of breast cancer were defined based on the expression levels of ER α , PR and Her-2.

ER β expression is significantly different in different molecular subtypes of breast cancer

To compare the difference in ER β expression among different molecular subtypes of breast cancer, we did Pearson chi-square test. Firstly, the molecular subtypes of 730 cases of breast cancer were determined based on the expression levels of ER α , PR and Her-2 (Table 2). A total of 545 cases of breast cancer were identified with molecular subtypes, including 202 cases (37.1%) of lumina A type (ER α +, PR+, Her-2-), 147 cases (27.0%) of luminal B type (ER α +, PR+, Her-2+), 95 cases (17.4%) of Her-2 over-expression type (ER α -, PR-, Her-2+) and 101 cases (18.5%) of basal like type (ER α -, PR-, Her-2-). Then we analyzed the expression of ER β in different molecular subtypes. As shown in Table 2, the ER β expression was significantly different among different molecular subtypes of breast cancer ($\chi^2 = 20.543$, $P < 0.05$). In cases with ER β (-) expression, Lumina A type breast cancer had the highest proportion (34.2%, 97/284) while Her-2 over-expression type (17.3%, 49/284) and basal like type (22.2%, 63/284) had the lowest proportion. The basal like type had higher proportion of cases with ER β (+++) expression (20.8%, 11/53) than that of cases with ER β (+) expression (13.0%, 30/154) and ER β (++) expression (13.0%, 7/54). Therefore, ER β was differentially expressed in different molecular subtypes of breast cancer.

Correlation analysis of ER β , ER α , PR and Her-2 expression

To analyze the correlation of ER β , ER α , PR and Her-2 expression, Spearman's Rank-order correlation was performed in 730 cases of breast cancer patients. The results were

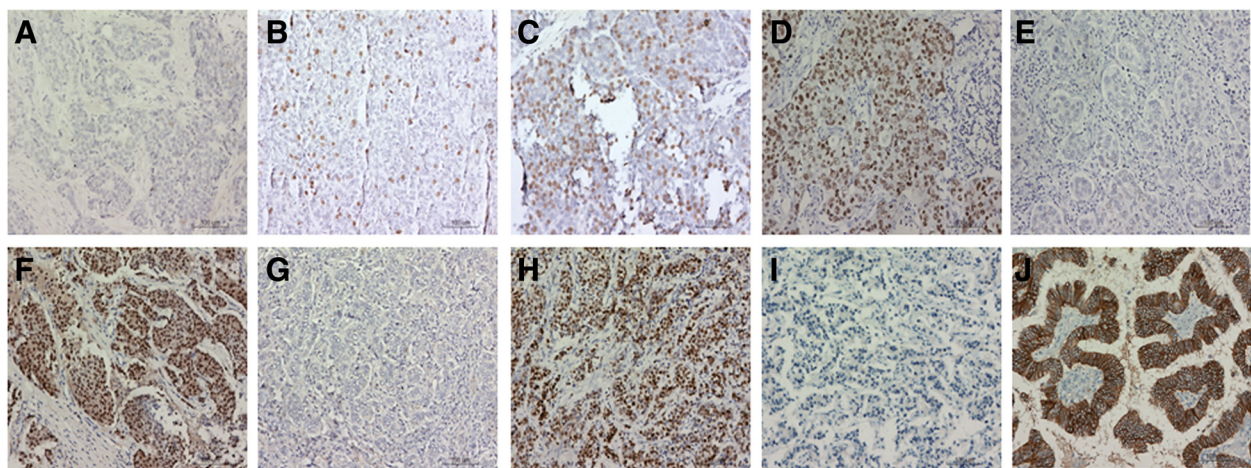


Figure 1 Expression analysis of ER β , ER α , PR and Her-2 in breast cancer tissue. Immunohistochemistry was performed to detect ER β , ER α , PR and Her-2 expression. Representative images were shown. Cells with brown granules were positive cells. Scale bar, 100 μ m. (A) ER β negative tissue (ER β (-)). (B) ER β weak positive expression tissue (ER β (+), cancer cells with a positive rate of < 10%). (C) ER β positive expression tissue (ER β (++) cancer cells with a positive rate between 10% and 50%). (D) ER β high expression tissue (ER β (+++), cancer cells with a positive rate of > 50%). (E) ER α negative tissue. (F) ER α positive tissue. (G) PR negative tissue. (H) PR positive tissue. (I) Her-2 negative tissue. (J) Her-2 positive tissue.

Table 2 Expression of ERβ in different molecular subtypes of breast cancer

	Total cases	ERβ (-) Cases (%)	ERβ (+) Cases (%)	ERβ (++) Cases (%)	ERβ (+++) Cases (%)	χ ²	P
Luminal A type	202	97 (48.0)	66 (32.7)	27 (13.4)	12 (5.9)	20.543	0.015*
Luminal B type	147	75 (51.0)	38 (25.9)	11 (7.5)	23 (15.6)		
Her-2 over-expression type	95	49 (51.6)	30 (31.6)	9 (9.5)	7 (7.4)		
Basal like type	101	63 (62.4)	20 (19.8)	7 (6.9)	11 (10.9)		

Note: Pearson chi-square test, *P < 0.05.

shown in Table 3. ERβ expression and Her-2 expression was positively correlated (P < 0.05). ERα expression and Her-2 expression was negatively correlated (P < 0.01). And, there was a negative correlation between PR expression and Her-2 expression (P < 0.05). A positive correlation was found between ERα expression and PR expression (P < 0.01). However, no correlation between ERβ expression and ERα expression or PR expression was identified (P > 0.05).

The tumor-free survival rate of the patients with positive expression of ERβ is significantly decreased

To investigate the effect of ERβ expression on survival of breast cancer patients, the accumulative tumor-free survival rate was analyzed by Kaplan-Meier method and the differences in survival time were analyzed by Log-Rank test. The survival curve of ERβ negative and positive expression patients (including ERβ (+), ERβ (++) and ERβ (+++)) was shown in Figure 2. The median tumor-free survival rate in patients with negative ERβ expression was 9.341 years. Meanwhile, the median tumor-free survival rate in ERβ positive expression patients was 7.850 years, significantly lower than that in low ERβ expression patients (Log-rank test, χ² = 10.748, P < 0.01). This result suggests that patients with positive ERβ expression had shorter tumor-free survival time and poor prognosis.

Analysis of prognostic factors for breast cancer

We also analyzed the prognostic factors for breast cancer by the Cox multivariate analysis. The analyzed factors included clinical stage, ERβ expression, ERα expression, PR expression, Her-2 expression and postoperative chemotherapy, radiotherapy and endocrine therapy. As shown in Table 4, clinical stage I was a risk factor for breast cancer

Table 3 Correlation analysis of ERβ, ERα, PR and Her-2 expression

	ERβ	ERα	PR	Her-2
ERβ	1	0.021	0.05	0.078*
ERα	0.021	1	0.540**	-0.101**
PR	0.05	0.540**	1	-0.086*
Her-2	0.078*	-0.101**	-0.086*	1

Note: Spearman's Rank-order correlation, *P < 0.05, **P < 0.01.

prognosis, with OR value = 0.164 and P = 0.000. Clinical stage II was also a risk factor for breast cancer prognosis, with OR value = 0.408 and P = 0.001. And, the OR value and P value of ERβ expression was 0.481 and 0.016, respectively, indicating that ERβ expression was a prognostic risk factor for breast cancer. In addition, postoperative chemotherapy was also a prognostic risk factor for breast cancer, with OR value = 0.334 and P = 0.001. However, ERα expression, PR expression, Her-2 expression, radiotherapy and endocrine therapy were not independent prognosis factors. Therefore, the independent prognostic risk factors for breast cancer included clinical stage, ERβ expression and postoperative chemotherapy.

Discussion

Breast cancer is a common malignancy in women, with high mortality rate [13]. Identification of biomarkers for early detection and new therapeutic targets of breast cancer helps to reduce the morbidity of this frequent pathology in women. To date, several breast markers have been postulated, such as ER (ERα and ERβ), PR, Her-2, BRCA1 (breast cancer susceptibility gene) and β1 integrin [14-16]. Among them, the role of ERβ in breast cancer prognosis is still controversial. In this study, the expression of ERβ in different molecular subtypes of breast cancer was compared. Our result showed that the expression level of ERβ had significant difference (P < 0.05) in the four molecular subtypes of breast cancer. In ERβ negative expression group, the proportion of luminal A type was significantly higher than the other three subtypes while the proportion of Her-2 overexpression type and basal like type was the lowest. Due to its strong invasive ability and metastasis ability, the basal like type is an independent prognostic factor of distant metastasis [17]. In this study, the basal like type had higher proportion of cases with ERβ (+++) expression, indicating that overexpression of ERβ may suggest poor prognosis of breast cancer.

Her-2 is considered to be an oncogene that is closely related to the development of breast cancer [18]. It is involved in the regulation of cell proliferation and differentiation, and its over-expression indicates high degree of malignancy, high recurrence rate, strong invasion and metastasis and poor prognosis. In this study, ERα and

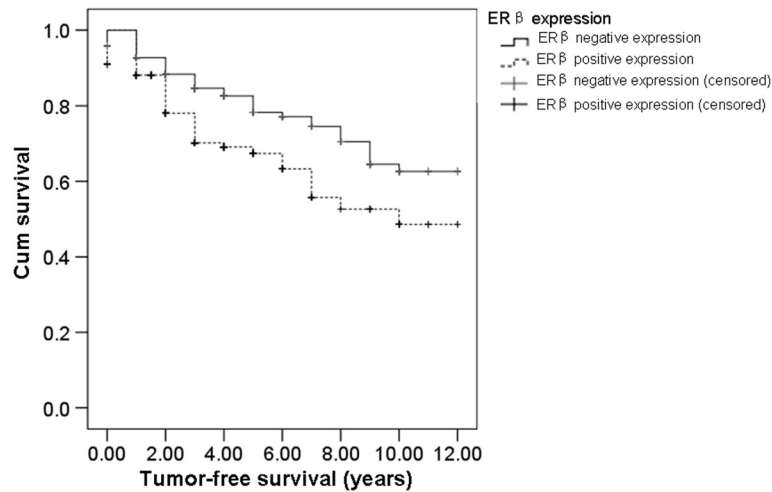


Figure 2 Survival analysis of breast cancer patients with negative and positive ERβ expression. Kaplan-Meier survival curve was displayed. The differences in survival time were analyzed by Log-Rank test. The patients (730 cases) were followed up for 2 to 10 years. During the follow-up time, 21 patients were censored. Patients died of other diseases, lost to follow-up at the time of last contact or before study cut-off were censored.

Her-2 expression was significantly negatively related ($P < 0.01$). PR expression and Her-2 expression was negatively related ($P < 0.05$). ERα expression and PR expression was significantly positively related ($P < 0.01$). These results were consistent with previous reports [19]. Moreover, ER and PR might be associated with Her-2 signal transduction pathway [20]. ERα in combination with estrogen could inhibit the expression of Her-2. Her-2 expression is up-regulated when ERα expression is down-regulated. Chung et al. [21] also found that the Her-2 expression was directly related with ERα expression. However, the role of ERβ in breast cancer and whether it could be used as a prognosis indicator of breast cancer are still controversial. Most studies suggest that ERβ is positively correlated with epidermal growth factor receptor [22]. ERβ inhibits apoptosis of tumor cells and thus ERβ positive expression suggests poor prognosis of breast cancer. However, some studies indicate that ERβ confers a good

prognosis of breast cancer [23]. In this study, ERβ and Her-2 was positively related ($P < 0.05$), suggesting that positive expression of ERβ may be a poor indicator of breast cancer prognosis. This result was consistent with the data reported by Huang et al. [24]. They found that positive expression of ERβ indicated poor distant disease-free survival (DDFS) rather than the overall survival time. ERβ may be related to distant metastasis of breast cancer and the overall survival time of the patients with positive ERβ expression was significantly lower than the ones with negative ERβ expression.

The cumulative tumor-free survival rate was analyzed by the Kaplan-Meier method. The cumulative tumor-free survival rate of the patients with positive ERβ expression was significantly decreased. The Cox multivariate analysis showed that ERβ expression, clinical stage and postoperative chemotherapy were independent risk factors for breast cancer prognosis. The positive ERβ expression was

Table 4 Analysis of prognostic factors for breast cancer by Cox multivariate analysis

Variances	Regression coefficient	Standard error	Wald value	P value	OR value	95.0% confidence intervals	
Clinical staging			22.570	0.000*			
Stage I	-1.807	0.402	20.205	0.000*	0.164	0.075	0.361
Stage II	-0.897	0.271	10.976	0.001*	0.408	0.240	0.693
ERβ expression	-0.732	0.303	5.834	0.016*	0.481	0.266	0.871
ERα expression	0.074	0.286	0.067	0.795	1.077	0.615	1.888
PR expression	0.518	0.315	2.704	0.100	1.679	0.905	3.115
Her-2 expression	-0.108	0.242	0.199	0.656	0.898	0.559	1.442
Chemotherapy	-1.096	0.326	11.337	0.001*	0.334	0.177	0.633
Radiotherapy	-0.515	0.270	3.648	0.056	0.597	0.352	1.014
Endocrine therapy	-0.016	0.279	0.003	0.954	0.984	0.570	1.700

Note: Cox multivariate analysis, * $P < 0.05$.

a high-risk prognostic factor, suggesting a poor prognosis in patients with positive ER β expression. The underlying mechanisms of the role of ER β in breast cancer might be related with the following two aspects. One is that through binding with ER β , estrogen can activate G protein which rapidly inhibits c-Jun N-terminal kinase (JNK) pathway and apoptosis of breast cancer cells [25]. The other one is that ER β could regulate the expression of related genes in the Wnt signaling pathway [26]. Thus, ER β could regulate the cell proliferation and invasion of breast cancer. And its expression is closely related with the recurrence and metastasis of breast cancer.

In summary, ER β was differentially expressed in different breast cancer molecular subtypes. And ER β expression was positively correlated with Her-2 expression. The cumulative tumor-free survival time in patients with negative ER β expression was longer than the ones with positive ER β expression. Multivariate analysis indicates that ER β was an independent risk factor for breast cancer prognosis. Therefore, we suppose that combined detection of ER β and ER α would be beneficial to better assess the proliferation activity of breast cancer and to improve the accuracy of prognosis evaluation in patients with breast cancer.

Competing interests

The authors declare that they have no competing interests.

Authors' contributions

All authors read and approved the final manuscript. LG conceived and designed the experiments, analyzed the data and wrote the manuscript. JM, DY and MF performed the experiments. Especially, we want to thank GA, BW and AJ. GA offered help in immunohistochemistry and BW, an experienced pathologist, did the immunohistochemical evaluation. AJ offered help in the revision of the manuscript.

Acknowledgements

This work was supported by Natural Science Foundation of Xinjiang Uygur Autonomous Region grant (No. 2011211A069).

Author details

¹Department of Breast, Digestive & Vascular Center, First Affiliated Hospital of Xinjiang Medical University, No. 137, South Liyushan Road, Xinjiang 830054, P. R. China. ²Department of Pathology, First Affiliated Hospital of Xinjiang Medical University, No. 137, South Liyushan Road, Xinjiang 830054, P. R. China.

Received: 29 August 2013 Accepted: 17 January 2014

Published: 23 January 2014

References

1. Kuiper GG, Enmark E, Peltouhikko M, et al: Cloning of a novel receptor expressed in rat prostate and ovary. *Proc Natl Acad Sci USA* 1996, **93**:5925–5930.
2. Omoto Y, Kobayashi S, Inoue S, et al: Evaluation of estrogen receptor beta wild-type and variant protein expression, and relationship with clinicopathological factors in breast cancers. *Eur J Cancer* 2002, **38**:380–386.
3. Pettersson K, Gustafsson JA: Role of estrogen receptor β in estrogen action. *Annu Rev Physiol* 2001, **63**:165–192.
4. Osborne CK, Schiff R: Estrogen-receptor biology: continuing progress and therapeutic implications. *J Clin Oncol* 2005, **23**:1616–1622.
5. Jensen EV, Cheng G, Palmieri C, et al: Estrogen receptors and proliferation markers in primary and recurrent breast cancer. *Proc Natl Acad Sci USA* 2001, **98**:15197–15202.

6. Perou CM, Sorlie T, Eisen MB, et al: Molecular portraits of human breast tumours. *Nature* 2000, **406**:747–752.
7. Sorlie T, Tibshirani R, Parker J, et al: Repeated observation of breast tumor subtypes in independent gene expression data sets. *Proc Natl Acad Sci USA* 2003, **100**:8418–8423.
8. Su Y, Zheng Y, Zheng W, et al: Distinct distribution and prognostic significance of molecular subtypes of breast cancer in Chinese women: a population-based cohort study. *BMC Cancer* 2011, **11**:292.
9. Chuthapisith S, Permsapaya W, Warnnissorn M, et al: Breast cancer subtypes identified by the ER, PR and HER-2 status in Thai women. *Asian Pac J Cancer Prev* 2012, **13**:459–462.
10. Noriega M, Paesani F, Perazzo F, et al: Immunohistochemical characterization of neoplastic cells of breast origin. *Diagn Pathol* 2012, **7**:73.
11. Kostianets O, Antoniuk S, Filonenko V, Kiyamova R: Immunohistochemical analysis of medullary breast carcinoma autoantigens in different histological types of breast carcinomas. *Diagn Pathol* 2012, **7**:161.
12. El Fatemi H, Chahbouni S, Jayi S, et al: Luminal B tumors are the most frequent molecular subtype in breast cancer of North African women: an immunohistochemical profile study from Morocco. *Diagn Pathol* 2012, **7**:170.
13. Siegel R, Naishadham D, Jemal A: Cancer statistics, 2013. *CA Cancer J Clin* 2013, **63**:11–30.
14. Furrer D, Jacob S, Caron C, et al: Validation of a new classifier for the automated analysis of the human epidermal growth factor receptor 2 (HER2) gene amplification in breast cancer specimens. *Diagn Pathol* 2013, **8**:17.
15. Zhang Q, Zhang Q, Cong H, Zhang X: The ectopic expression of BRCA1 is associated with genesis, progression, and prognosis of breast cancer in young patients. *Diagn Pathol* 2012, **7**:181.
16. dos Santos PB, Zanetti JS, Ribeiro-Silva A, Beltrão El: Beta 1 integrin predicts survival in breast cancer: a clinicopathological and immunohistochemical study. *Diagn Pathol* 2012, **7**:104.
17. Zhang P, Xu BH, Ma F, Li Q, Yuan P, Wang JY, Zhang P: Treatment outcomes and clinicopathologic characteristics of advanced triple-negative breast cancer patients. *Chinese Journal of Oncology* 2011, **33**:381–384.
18. Gown AM: Current issues in ER and HER-2 testing by IHC in breast cancer. *Mod Pathol* 2008, **21**:S8.
19. Dowsett M, Harper-Wynne C, Boeddinghaus I, et al: HER-2 amplification impedes the antiproliferative effects of hormone therapy in estrogen receptor-positive primary breast cancer. *Cancer Res* 2001, **61**:8452–8458.
20. Liu QY, Kong LF, Liu ZG: Clinical value of detection of HER-2 gene in breast cancer. *Journal of Chinese Practical Diagnosis and Therapy* 2010, **24**:778.
21. Chung YL, Sheu ML, Yang SC, et al: Resistance to tamoxifen-induced apoptosis with direct interaction between Her-2/neu and cell membrane estrogen receptor in breast cancer. *Int J Cancer* 2002, **97**:306–312.
22. Speris V: Oestrogen receptor beta in breast cancer: good, bad or still too early to tell? *Pathol* 2002, **197**:143–147.
23. Xu YN, Jiang J, Cheng H, et al: Expression and significance of estrogen receptor isoforms in different breast tissues. *J Third Mil Med Univ* 2007, **29**:1093–1095.
24. Huang WY, Chen DH, Shen Z: Effect of estrogen receptor and HER2 co-expression on the prognosis of breast cancer. *Chinese Medical Herald* 2012, **9**:20–23.
25. Razandi M, Pedram A, Levine R: Plasma membrane estrogen receptor signal to antiapoptosis in breast cancer. *Mol Endocrinol* 2000, **14**:1434–1447.
26. Sun H, Zhang J, Hao XS: Mechanisms of estrogen receptor β and its signal transduction pathway related genes in the development of different breast cancer model. *Chinese Journal of experimental surgery* 2006, **23**:1422–1423.

doi:10.1186/1746-1596-9-20

Cite this article as: Guo et al.: Significance of ER β expression in different molecular subtypes of breast cancer. *Diagnostic Pathology* 2014 **9**:20.