

# Mammalian bone palaeohistology: a survey and new data with emphasis on island forms

Christian Kolb<sup>1</sup>, Torsten M. Scheyer<sup>1</sup>, Kristof Veitschegger<sup>1</sup>, Analia M. Forasiepi<sup>2</sup>, Eli Amson<sup>1</sup>, Alexandra A.E. Van der Geer<sup>3,4</sup>, Lars W. Van den Hoek Ostende<sup>3</sup>, Shoji Hayashi<sup>5</sup> and Marcelo R. Sánchez-Villagra<sup>1</sup>

<sup>1</sup> Paläontologisches Institut und Museum, Universität Zürich, Zürich, Switzerland

<sup>2</sup> Consejo Nacional de Investigaciones Científicas y Técnicas, Instituto Argentino de Nivología, Glaciología y Ciencias Ambientales, Centro Científico y Tecnológico, Mendoza, Argentina

<sup>3</sup> Department of Geology, Naturalis Biodiversity Center, Leiden, The Netherlands

<sup>4</sup> Department of Historical Geology and Palaeontology, National and Kapodistrian University of Athens, Zografou, Greece

<sup>5</sup> Osaka Museum of Natural History, Osaka, Japan

## ABSTRACT

The interest in mammalian palaeohistology has increased dramatically in the last two decades. Starting in 1849 via descriptive approaches, it has been demonstrated that bone tissue and vascularisation types correlate with several biological variables such as ontogenetic stage, growth rate, and ecology. Mammalian bone displays a large variety of bone tissues and vascularisation patterns reaching from lamellar or parallel-fibred to fibrolamellar or woven-fibred bone, depending on taxon and individual age. Here we systematically review the knowledge and methods on cynodont and mammalian bone microstructure as well as palaeohistology and discuss potential future research fields and techniques. We present new data on the bone microstructure of two extant marsupial species and of several extinct continental and island placental mammals. Extant marsupials display mainly parallel-fibred primary bone with radial and oblique but mainly longitudinal vascular canals. Three juvenile specimens of the dwarf island hippopotamid *Hippopotamus minor* from the Late Pleistocene of Cyprus show reticular to plexiform fibrolamellar bone. The island murid *Mikrotia magna* from the Late Miocene of Gargano, Italy displays parallel-fibred primary bone with reticular vascularisation and strong remodelling in the middle part of the cortex. *Leithia* sp., the dormouse from the Pleistocene of Sicily, is characterised by a primary bone cortex consisting of lamellar bone and a high amount of compact coarse cancellous bone. The bone cortex of the fossil continental lagomorph *Prolagus oeningensis* and three fossil species of insular *Prolagus* displays mainly parallel-fibred primary bone and reticular, radial as well as longitudinal vascularisation. Typical for large mammals, secondary bone in the giant rhinocerotoid *Paraceratherium* sp. from the Late Oligocene of Turkey is represented by dense Haversian bone. The skeletochronological features of *Sinomegaceros yabei*, a large-sized deer from the Pleistocene of Japan closely related to *Megaloceros*, indicate a high growth rate. These examples and the synthesis of existing data show the potential of bone microstructure to reveal essential information on life history evolution. The bone tissue and the skeletochronological data of the sampled island species suggest

Submitted 2 June 2015

Accepted 7 October 2015

Published 22 October 2015

Corresponding author

Christian Kolb,  
christian.kolb@pim.uzh.ch

Academic editor

John Hutchinson

Additional Information and  
Declarations can be found on  
page 32

DOI 10.7717/peerj.1358

© Copyright  
2015 Kolb et al.

Distributed under  
Creative Commons CC-BY 4.0

**OPEN ACCESS**

the presence of various modes of bone histological modification and mammalian life history evolution on islands to depend on factors of island evolution such as island size, distance from mainland, climate, phylogeny, and time of evolution.

**Subjects** Evolutionary Studies, Paleontology, Histology

**Keywords** Mammals, Palaeohistology, Island evolution, Bone tissue, *Mikrotia*, *Paraceratherium*, *Hippopotamus minor*, *Leithia*, *Sinomegaceros*, *Prolagus*

## INTRODUCTION

Histology of fossil bones (e.g., [Ricqlès, 1976a](#); [Padian, 2011](#)) provides data to investigate life history variables such as age, sexual maturity, growth patterns, and reproductive cycles. Research on fossil vertebrate hard tissues dates back to the 19th century, when it was recognised that bones and teeth are commonly very well preserved at the histological level ([Quekett, 1849a](#); [Quekett, 1849b](#)). Since then, several descriptive surveys of different tetrapod taxa, including mammals, have been published (e.g., [Schaffer, 1890](#); [Enlow & Brown, 1958](#); [Ricqlès, 1976a](#); [Ricqlès, 1976b](#); [Klevezal, 1996](#); [Marín-Moratalla et al., 2014](#); [Prondvai et al., 2014](#)). The study of the microstructure of highly mineralised components such as blood vessel arrangement ([De Boef & Larsson, 2007](#)) and tissue types in bones as well as teeth (e.g., [Kolb et al., 2015](#)) provides information on growth patterns and remodelling processes of hard tissues in extinct vertebrates (see also [Scheyer, Klein & Sander, 2010](#); [Chinsamy-Turan, 2012a](#); [Padian & Lamm, 2013](#) for summaries).

Mammals are a well-known group of vertebrates with a well-documented fossil record. However, until recent years and apart from a few seminal papers ([Gross, 1934](#); [Enlow & Brown, 1958](#); [Warren, 1963](#); [Klevezal, 1996](#)), mammalian bone histology received little attention by biologists and palaeontologists alike compared to dinosaurs and non-mammalian synapsids (e.g., [Horner, Ricqlès & Padian, 1999](#); [Sander et al., 2004](#); [Chinsamy-Turan, 2012a](#); see also [Padian, 2013](#) for a review on [Chinsamy-Turan, 2012a](#)).

The present contribution summarises the main aspects about the current state of knowledge on mammalian palaeohistology without omitting some of the relevant non-mammalian contributions, presents new finds on several extant and extinct species from diverse clades, and discusses perspectives in this field of research. Bone histological traits of extinct island mammals sampled for the present study are described and implications for island evolution are discussed. Literature dealing with pathologies in mammalian bone is omitted since this goes beyond the scope of this synthesis.

### Bone tissue types

In synapsids, three main types of bone matrix are distinguished. *Woven-fibred bone* shows highly disorganised collagen fibres of different sizes being loosely and randomly arranged. *Parallel-fibred bone* consists of tightly packed collagen fibrils arranged in parallel. *Lamellar bone* shows the highest spatial organisation. It consists of thin layers (lamellae) of closely packed collagen fibres. Both parallel-fibred and lamellar bone are indicative of relatively

low growth rates (*Francillon-Vieillot et al., 1990; Huttenlocker, Woodward & Hall, 2013*). *Bromage et al. (2009)* confirmed that lamellar bone is an incremental tissue, with one lamella formed in the species-specific time dependency of the formation of long-period increments (striae of Retzius) in enamel. The authors also showed a negative correlation between osteocyte density in bone and body mass and thus suggested a central autonomic regulatory control mechanism to the coordination of organismal life history and body mass. This demonstrates the relevance of bone histology for understanding physiological mechanisms in extant and extinct vertebrates.

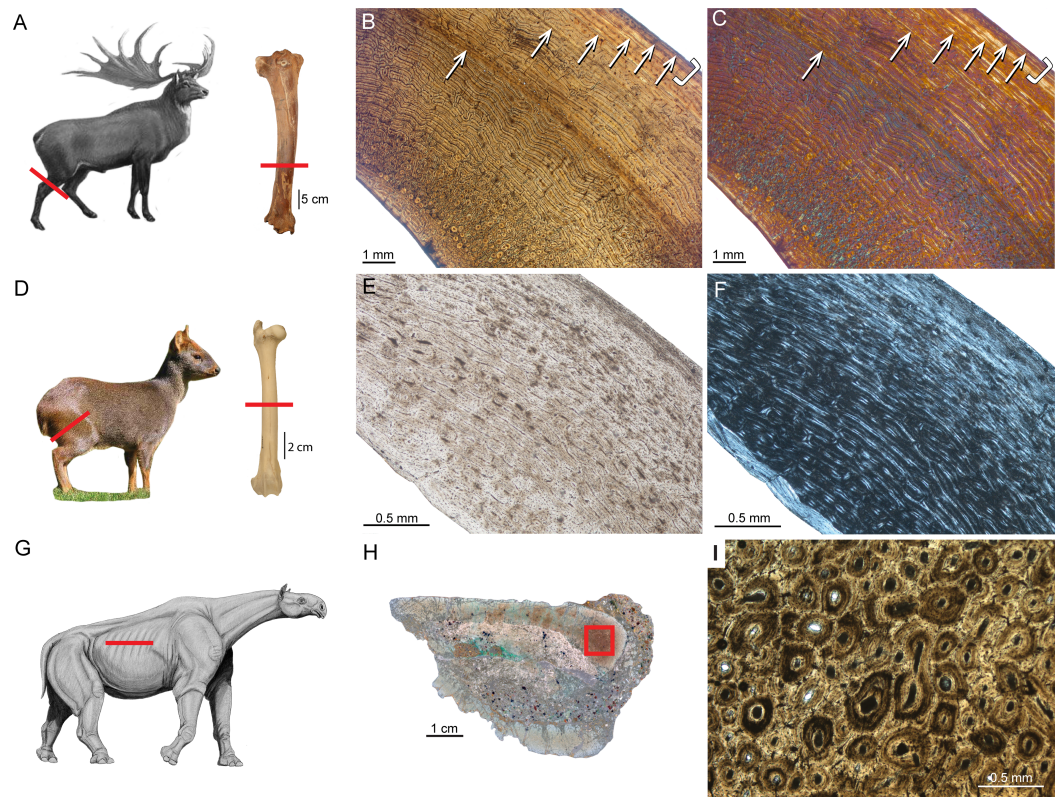
A bone complex composed of a woven-fibred bone matrix in which osteonal lamellar bone infills the space between woven bone and primary vascular canals, is defined as *fibrolamellar bone* (Figs. 1B, 1C, 1E and 1F) (*Ricqlès, 1974; Stein & Prondvai, 2014*) or fibrolamellar complex (FLC; *Ricqlès, 1975; Ricqlès et al., 1991; Margerie, Cubo & Castanet, 2002; Prondvai et al., 2014*). According to its vascular orientation, three main types of fibrolamellar bone are distinguished: *Laminar bone* shows an almost uniform circumferential orientation of vascular canals. In case circumferential canals are connected by radial ones forming a dense anastomosing network, the pattern is called *plexiform* (Figs. 1B, 1C, 1E and 1F). An anastomosing network showing random organisation with oblique orientations is defined as *reticular*. Moreover, a radial arrangement of vascular canals is called *radiating* or *radial bone* (*Francillon-Vieillot et al., 1990; Chinsamy-Turan, 2012b; Huttenlocker, Woodward & Hall, 2013*).

Amprino identified for the first time a relationship between bone tissue type and growth rate in vertebrates, what is now called “Amprino’s rule” (*Amprino, 1947*; see also *Lee et al., 2013*). *Stein & Prondvai (2014)* found, by investigating longitudinal thin sections of sauropod long bones, that the amount of woven bone in the primary complex has been largely overestimated (e.g., *Klein & Sander, 2008*), questioning former arguments on the biology and life history of sauropod dinosaurs. Similarly, *Kolb et al. (2015)* showed, via longitudinal thin sections, that in the giant deer *Megaloceros giganteus* the amount of woven-fibred bone within the fibrolamellar complex (FLC) is easily overestimated as well.

## Growth marks and skeletochronology

Different types of growth marks in the bone cortex are distinguished in the osteohistological literature. They are deposited cyclically, usually occurring within lamellar or parallel-fibred bone. All kinds of growth marks indicate a change in growth rate or a complete arrest of growth.

In all groups of mammals thin, semitranslucent to opaque bands, termed lines of arrested growth (LAGs, see also *Huttenlocker, Woodward & Hall, 2013*), occur (*Morris, 1970; Frylestam & Schantz, 1977; Buffrénil, 1982; Chinsamy, Rich & Vickers-Rich, 1998; Klevezal, 1996; Castanet et al., 2004; Köhler et al., 2012*). It has repeatedly been confirmed and is now widely accepted that LAGs are deposited annually (e.g., *Castanet & Smirina, 1990; Buffrénil & Castanet, 2000; Castanet, 1994; Marangoni et al., 2009; Chinsamy-Turan, 2012b*) and independently of metabolic rate and climatic background (*Köhler et al., 2012*;



**Figure 1** Typical mammalian bone tissue as observed in large mammals such as cervids. Red bars indicate area and plane of sectioning. Histological images (B), (E), and (I) in linear polarised light, (C) in crossed polarised light and with additional use of lambda compensator, and (F) in crossed polarised light. (A) Life reconstruction of the cervid *Megaloceros giganteus* (“Knight Megaloceros” by Charles R. Knight, courtesy of the American Museum of Natural History via Wikimedia Commons—<http://commons.wikimedia.org>). (B, C) Bone cortex of an adult tibia of *Megaloceros giganteus* specimen NMING:F21306/14 displaying an endosteal lamellar layer (innermost part of the cortex) and reticular as well as plexiform fibrolamellar primary bone with growth marks. Note that the primary bone is pervaded by secondary Haversian systems in the inner third of the bone cortex. White arrows indicate lines of arrested growth. Occurrence of LAGs indicated by black/white arrows and the outer circumferential layer (OCL) by white brackets. (D) Photograph of *Pudu puda* (“Pudupuda hem 8 FdoVidal Villarr 08Abr06-PhotoJimenez,” courtesy of Jaime E. Jimenez via Wikimedia Commons—<http://commons.wikimedia.org>). (E, F) Bone cortex of an adult femur of *Pudu puda* specimen NMW 60135 displaying an endosteal lamellar layer and mainly plexiform fibrolamellar bone. (G) Reconstruction of *Paraceratherium* (“Indri-cotherium11,” Courtesy of Dmitry Bogdanov via Wikimedia Commons—<http://commons.wikimedia.org>). (H) Cross-section of a rib of *Paraceratherium* sp. specimen MTA-TTM 2006-1209. Red rectangle indicates area of dense Haversian bone magnified in (I).

*Huttenlocker, Woodward & Hall, 2013*) and therefore they can be used for age estimations, estimates of age at sexual or skeletal maturity, and growth rate analysis.

*Castanet et al. (2004)* studied LAGs in long bones, mandibles, and tooth cementum (M2 and M3) of captive specimens of known aged mouse lemur, *Microcebus murinus*. The 43 male and 23 female specimens sampled ranged from juveniles to 11-year-old adults, for which LAG counts and ages correlated best in the tibiae. In individuals older than seven years the correlation decreased, leading to an age underestimation of three to four years

and demonstrating limitations of skeletochronology in long bones (see also [Klevezal, 1996](#); [Castanet, 2006](#)). Additionally, animals exposed to an artificially accelerated photoperiodic regimen (a 10-month cycle) show a higher number of LAGs than animals of the same true age in which a yearly photoperiod is maintained. According to that, there is strong evidence that photoperiodicity is an essential factor for the deposition of LAGs rather than environmental factors (see also [Woodward, Padian & Lee, 2013](#)).

[Köhler et al. \(2012\)](#) additionally demonstrated that the annual formation of LAGs is present throughout ruminants and that a cyclic arrest of growth in bone is mainly triggered by hormonal cues rather than environmental stresses. By confirming seasonal deposition of LAGs throughout ruminants, the general occurrence of LAGs in homeothermic endotherms has been confirmed, precluding the use of lines of arrested growth as an indicator of ectothermy ([Köhler et al., 2012](#)).

Different kinds of processes in the cortex potentially remove parts of the growth record and may erase early LAGs. One of those processes is the substitution of primary bone tissue by secondary bone tissue in areas where resorption previously occurred. Secondary bone can appear as *Haversian bone* ([Fig. 11](#)) consisting of clustered Haversian systems responding to damage such as microcracks, or around the medullary cavity forming endosteal lamellar bone in response to ontogenetic changes in bone shape, i.e., bone drift ([Enlow, 1962](#)).

Several approaches to retrocalculate the lost information have been attempted and there are two ways of retrocalculating missing years. First, in case an appropriate ontogenetic growth series sampling is not available, it is possible to perform arithmetic estimates of the missing intervals, applied first for dinosaurs (e.g., [Sander & Tückmantel, 2003](#); [Horner & Padian, 2004](#); [Erickson et al., 2004](#)). The second approach is the superimposition of thin sections of long bones of different ontogenetic stages, again applied first for dinosaurs (e.g., [Horner, Ricqlès & Padian, 2000](#); [Bybee, Lee & Lamm, 2006](#); [Lee & Werning, 2008](#); [Erickson, 2014](#); see also [Woodward, Padian & Lee, 2013](#) for more methodological details).

[Marín-Moratalla, Jordana & Köhler \(2013\)](#) were the first to apply the superimposition method to mammals using anteroposterior diameters of successive growth rings in five antelope (*Addax*) femora of different ages. They found that the first LAG in adult specimens fits the second growth cycle of juveniles, indicating that the first LAG is lost by resorption throughout ontogeny. This allowed estimates of age at death by counting all the rest lines in the bone cortex and increasing the LAG count by one. Additionally, it was possible to estimate age at sexual maturity. When an animal reaches maturity it is indicated by the deposition of a narrow layer of avascular lamellar bone, called the *outer circumferential layer* (OCL, [Ponton et al., 2004](#); [Figs. 1B and 1C](#)), and also referred to as the *external fundamental system* (EFS, *sensu* [Horner, Ricqlès & Padian, 1999](#); see also [Woodward, Padian & Lee, 2013](#)). Given that [Cormack \(1987\)](#) uses the term “outer circumferential lamellae” (p. 305), we follow [Ponton et al. \(2004\)](#) in using the term outer circumferential layer (OCL) instead of EFS. [Marín-Moratalla, Jordana & Köhler \(2013\)](#) and [Jordana et al. \(in press\)](#) interpreted the transition from the FLC to the OCL to represent attainment of reproductive maturity in ruminants, since maturity estimates correlated

well with individual tooth eruption and wear stages, as well as life history data. Therefore, the authors could show that in ruminants it is possible to determine age at reproductive maturity and death. Maturity estimates based on the occurrence of the OCL in a recent study by [Kolb et al. \(2015\)](#) on extant cervids showed bone microstructure corresponding well with the timing of the attainment of skeletal maturity.

## MATERIAL AND METHODS

In order to contribute to a more complete picture of mammalian palaeohistology, long bones of the following additional mammalian taxa, including several taxa of extinct insular mammals, were sampled. Characteristics of bone histology of the following taxa are either poorly or not at all documented in the literature ([Table 1](#)): the extant white-eared opossum *Didelphis albiventris* and the thick-tailed opossum *Lutreolina crassicaudata*, the giant deer *Megaloceros giganteus* from the Late Pleistocene of Ireland, the Asian giant deer *Sinomegaceros yabei* from the Late Pleistocene of Japan, the extant southern pudu *Pudu puda*, the Cyprus dwarf hippopotamid *Hippopotamus minor* from the Late Pleistocene of Cyprus, the dormouse *Leithia* sp. from the Pleistocene of Sicily, the giant hornless rhinocerotoid *Paraceratherium* sp. from the Late Oligocene of Turkey, the continental pika *Prolagus oeningensis* from the Middle Miocene of La Grive, France, and the Sardinian pika *Prolagus sardus* from the Late Pleistocene. From the Late Miocene of Gargano, Italy, the following material was sampled: the galericine insectivore *Deinogalerix* sp., the giant murid *Mikrotia magna*, as well as the giant pikas *Prolagus apricenicus* and *Prolagus imperialis*. Ontogenetic stages in long bones have been determined by the state of epiphyseal fusion ([Habermehl, 1985](#)).

Following standard procedures, bones were coated and impregnated with epoxy resin (Araldite or Technovit) prior to sawing and grinding. Long bones were transversely sectioned at the mid-shaft where the growth record is most complete (e.g., [Sander & Andrassy, 2006](#); [Kolb et al., 2015](#)). A tibia of *Megaloceros giganteus* was also sampled by using a diamond-studded core drill, with sampled cores being subsequently processed ([Sander & Andrassy, 2006](#); [Stein & Sander, 2009](#)). Sections were observed in normal transmitted and cross-polarised light using a Leica DM 2500 M compound microscope equipped with Leica DFC 420 C digital camera. Phylogeny was produced using Mesquite 3.02© ([Maddison & Maddison, 2015](#)) and redrawn using Adobe Illustrator CS5©.

## Approval information

We thank Naturalis Biodiversity Center, Leiden, the Netherlands, Loïc Costeur (Naturhistorisches Museum Basel, Switzerland), George Lyras (Museum of Paleontology and Geology, University of Athens, Greece), Nigel Monaghan (National Museum of Ireland, Natural History), Hiroyuki Taruno (Osaka Museum of Natural History, Japan), Frank Zachos and Alexander Bibl (Naturhistorisches Museum Wien, Austria), Pierre-Olivier Antoine (Institut des Sciences de l'Évolution-Montpellier, France), and Ebru Albayrak, (MTA Natural History Museum, The General Directorate of Mineral Research and Exploration, Ankara, Turkey) for approving sampling of specimens for histological study.

**Table 1** Material used in this study. Specimens sampled in this study with ontogenetic stage, geological age, locality of death/fossil site, and specimen number.

Species	Object	Ontogenetic stage	Geological age; locality	Specimen number
<i>Didelphis albiventris</i>	Femur	adult	La Plata, Argentina	PIMUZ A/V 5279
”	”	adult	”	PIMUZ A/V 5277
”	”	adult	Ingeniero Mashwitzt, Argentina	PIMUZ A/V 5276
”	”	adult	Ranchos, Argentina	PIMUZ A/V 5278
<i>Lutreolina crassicaudata</i>	”	adult	Mar de Ajo, Argentina	PIMUZ A/V 5275
”	”	adult	La Plata, Argentina	PIMUZ A/V 5274
<i>Leithia</i> sp.	Tibia	adult	Pleistocene; Grotta di Maras, Sicily	NMB G 2160
<i>Mikrotia magna</i>	Femur	adult	Late Miocene; Sono Giovo, Gargano	RGM.792083
”	”	adult	”	RGM.792084
”	”	adult	”	RGM.792085
”	”	adult	”	RGM.792086
<i>Prolagus apricenicus</i>	Femur	adult	Late Miocene; San Giovannino, Gargano	RGM.792087
”	”	adult	”	RGM.792088
”	”	adult	”	RGM.792089
”	”	adult	”	RGM.792090
”	”	adult	”	RGM.792091
”	”	adult	”	RGM.702092
”	Humerus	adult	”	RGM.792093
”	”	adult	”	RGM.792094
”	”	adult	”	RGM.792095
<i>Prolagus imperialis</i>	Femur	adult	”	RGM.792096
”	”	adult	”	RGM.792097
”	”	adult	”	RGM.792098
”	”	adult	”	RGM.792099
”	”	adult	”	RGM.792100
”	”	adult	”	RGM.792101
”	Humerus	juvenile	”	RGM.792102
”	”	adult	”	RGM.792103
”	”	adult	”	RGM.792104
<i>Prolagus sardus</i>	Femur	juvenile	Late Pleistocene; Monte San Giovanni, Sardinia	NMB Ty. 4974
”	”	adult	”	NMB Ty. 4977
”	”	adult	Late Pleistocene; Grotta Nicolai, Sardinia	NMB Ty.12656
”	”	adult	”	NMB Ty.12657
”	”	adult	Late Pleistocene; Isola di Tavolara, Sardinia	NMB Ty.12658
”	”	adult	”	NMB Ty.12659
<i>Prolagus oeningensis</i>	Femur	juvenile	Middle Miocene; La Grive, France	PIMUZ A/V 4532
”	”	adult	”	PIMUZ A/V 4532
”	”	adult	”	PIMUZ A/V 4532
”	Humerus	adult	”	PIMUZ A/V 4532
”	”	adult	”	PIMUZ A/V 4532
<i>Megaloceros giganteus</i>	Tibia	adult	Late Pleistocene; Baunmore Townland, Rep. of Ireland	NMING:F21306/14

(continued on next page)

Table 1 (continued)

Species	Object	Ontogenetic stage	Geological age; locality	Specimen number
<i>Sinomegaceros yabei</i>	Tibia	juvenile	Late Pleistocene; Kumaishi-do Cave, Miyama, Hachiman-cho, Gujo City, Gifu Prefecture, Japan	OMNH QV-4067
"	Tibia	adult	"	OMNH QV-4068
"	Femur	juvenile	"	OMNH M-087
"	Femur	adult	"	OMNH QV-4062
<i>Pudu puda</i>	Femur	adult	Tiergarten Schönbrunn, Vienna, Austria	NMW 60135
<i>Hippopotamus minor</i>	"	juvenile	Late Pleistocene; Kissonerga, Cyprus	CKS 110/B
"	"	juvenile	"	CKS 122/B
"	"	subadult	"	CKS 117
"	Tibia	adult	"	CKS 215
<i>Paraceratherium</i> sp.	Rib	adult	Late Oligocene; Gözükiçilli, Turkey	MTA-TTM 2006-1209
<i>Deinogalerix</i> sp.	Femur	adult	Late Miocene; Gervasio 1, Gargano, Italy	RGM.178017
"	Humerus	adult	Late Miocene; Chiro 20E, Foggia, Gargano, Italy	RGM.425360

**Notes.**

**Institutional Abbreviations:** CKS, Cyprus Kissonerga collection of the University of Athens; MTA, Natural History Museum, The General Directorate of Mineral Research and Exploration, Ankara, Turkey; NMB, Naturhistorisches Museum Basel, Switzerland; NMING, National Museum of Ireland—Natural History; NMW, Naturhistorisches Museum Wien, Austria; OMNH, Osaka Museum of Natural History, Japan; PIMUZ, Paläontologisches Institut und Museum, Universität Zürich, Switzerland; RGM, Rijksmuseum voor Geologie en Mineralogie (now Netherlands Centre for Biodiversity Leiden).

## MAMMALIAN BONE HISTOLOGY—WORKS BEFORE 1935

The initial contribution on the bone palaeohistology of mammals was performed by [Quekett \(1849a\)](#), [Quekett \(1849b\)](#) and [Quekett \(1855\)](#) as part of comprehensive studies dealing with the bone cortex of not only mammals but also fish, reptiles, and birds. He described the tissue from mammalian long bones including an extinct rhinocerotid and equid, the extinct giant deer *Megaloceros giganteus*, the extinct proboscidean *Mastodon*, fossils of xenarthrans such as *Megatherium*, and humans. [Quekett \(1849a\)](#), [Quekett \(1849b\)](#) and [Quekett \(1855\)](#) described in these taxa Haversian canals, bony laminae, bone-cells, and canaliculi as well as a the typical three layered composition of cranial bones, ribs, and scapulae displaying a diploe structure within two thin compact layers. Later, [Aeby \(1878\)](#) concentrated on taphonomical effects and compared bone tissue of reptiles, birds, and mammals. Then, [Kiprijanoff \(1881\)](#) illustrated the bone cortex of the sperm whale (*Physeter macrocephalus*) in a comparative study of fossil material from Russia. [Schaffer \(1890\)](#) described the bone tissue of several mammals, including sirenians from the Eocene, Oligocene, and Miocene (*Halitherium*), a proboscidean from the Miocene (*Mastodon*), an undetermined fossil cetacean, and artiodactyls (an undetermined artiodactyl referred to an antelope and *Hippopotamus*, both from the Pliocene). Schaffer also investigated Artiodactyla (*Sus scrofa*, *Capreolus*), Carnivora (*Ursus spelaeus*), Rodentia (*Arvicola*), as well as undetermined long and skull bones, all from the Pleistocene. [Foote \(1911a\)](#) and [Foote \(1911b\)](#) examined in a comprehensive study the femoral bone cortex of extant amphibians, birds, and mammals including marsupials, rodents, lagomorphs, carnivorans, ‘ungulates’, and primates. [Nopcsa & Heidsieck \(1934\)](#) studied reptile bones and the ribs of



sirenians (*Halitherium*). In his comparative work, *Gross (1934)* studied the bone cortex of the proboscidean *Mammuthus*.

## BONE HISTOLOGY OF EXTINCT AND EXTANT CYNODONT CLADES

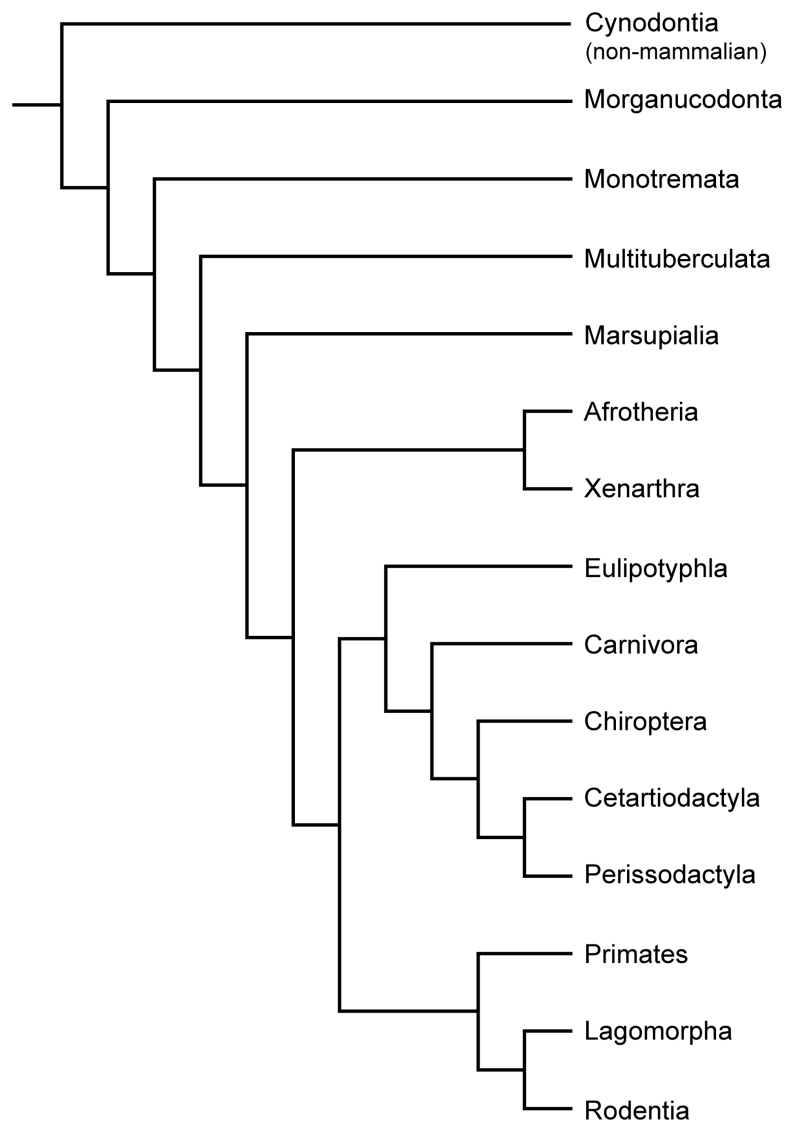
### Non-mammalian cynodonts

Cynodonts represent the last major synapsid lineage to appear in Earth history with mammals as living representatives. Many articles have been published on non-mammalian cynodont histology in recent years (e.g., *Ricqlès, 1969*; *Botha & Chinsamy, 2000*; *Botha & Chinsamy, 2004*; *Botha & Chinsamy, 2005*; *Ray, Botha & Chinsamy, 2004*; *Chinsamy & Abdala, 2008*; *Botha-Brink, Abdala & Chinsamy, 2012*; *Chinsamy-Turan, 2012b*).

Fibrolamellar bone is present to a varying degree in all cynodonts. Considerable variation in vascular density and orientation and the presence/absence of growth marks such as LAGs are evident. When observed within the phylogenetic context, there is an overall increase in bone deposition rate. This is indicated by an increasing prevalence of highly vascularised fibrolamellar bone in phylogenetically later cynodonts (*Botha-Brink, Abdala & Chinsamy, 2012*). Several factors are proposed to influence the microstructure and therefore responsible for the aforementioned variability: phylogeny, biomechanics, ontogeny, body size, lifestyle preferences, and environmental influences (*Cubo et al., 2005*; *Kriloff et al., 2008*; *Botha-Brink, Abdala & Chinsamy, 2012*). *Padian (2013)* emphasised that the correlation between fibrolamellar bone and high growth rates, and endothermy is still valid, although fibrolamellar bone is known to occur in rare cases in ectothermic reptiles such as crocodiles and turtles.

### Multituberculata and early mammals

Histological studies of multituberculates (see [Fig. 2](#) for mammalian groups discussed below) and in general stem mammals are scarce. *Enlow & Brown (1958)* described a section of a mandible from *Ptilodus*. Its cortex consisted of lamellar bone with a central region of indistinct and unorganised lamellae, in which lacunae and cell spaces as well as radial vascular canals were present. Morphological studies have suggested different kinds of locomotion within the group (saltatorial, fossorial, scansorial, and arboreal; *Kielan-Jaworowska, Cifelli & Luo, 2004*), which might be reflected in the microstructure of the appendicular bones. *Chinsamy & Hurum (2006)* compared the bone tissue from long bones and one rib of multituberculates, *Morganucodon*, and early mammals. They showed that *Morganucodon* and multituberculates (*Kryptobataar, Nemegtataar*) were characterised by fibrolamellar/woven-fibred bone at early stages of ontogeny and later on by parallel-fibred or lamellar bone. Their findings pointed towards relatively high growth rates compared to the late Mesozoic eutherians *Zalambdalestes* and *Barunlestes* with periodic growth pauses as indicated by the occurrence of LAGs. Comparisons of morganucodontid and early mammalian bone microstructure with that of non-mammalian cynodonts, extant monotremes, and placentals indicated significant differences in the rate of osteogenesis in the various groups. The authors concluded multituberculates and Mesozoic eutherians



**Figure 2** Phylogeny of Cynodontia focussing on groups discussed, based on [Luo & Wible \(2005\)](#), [Luo \(2011\)](#), [Meredith et al. \(2011\)](#) and [O'Leary et al. \(2013\)](#). Notoungulates and Pantodonta are not included given their controversial systematic position.

to have had slower growth rates than modern monotremes and placentals and that the sustained, uninterrupted bone formation among multituberculates may have been an adaptive attribute prior to the K–Pg event, but that a flexible growth strategy implying periodic growth pauses of the early eutherians was more advantageous thereafter.

### Monotremata

Monotremes are represented today by three genera (*Ornithorhynchus*, *Tachyglossus*, and *Zaglossus*) each with specialized skeletal morphology. Their poor fossil record includes material from Australia and South America ([Pascual et al., 1992](#); [Musser & Archer, 1998](#); [Musser, 2003](#)). Accordingly, the bone histology of monotremes has been scarcely studied.

*Enlow & Brown (1958)* were the first to describe sections of long bones and ribs of *Platypus* and *Echidna*. *Chinsamy & Hurum (2006)* described the femoral bone tissue of *Ornithorhynchus* as being a mixture of woven-fibred bone with lamellar bone deposits. Additionally, large parts of the compacta consisted of compacted coarse cancellous bone. The type of vascularisation and the orientation of the vascular channels varied from simple blood vessels with longitudinal, circular and radial orientations to primary osteons with longitudinal and reticular arrangements. Only isolated secondary osteons were present.

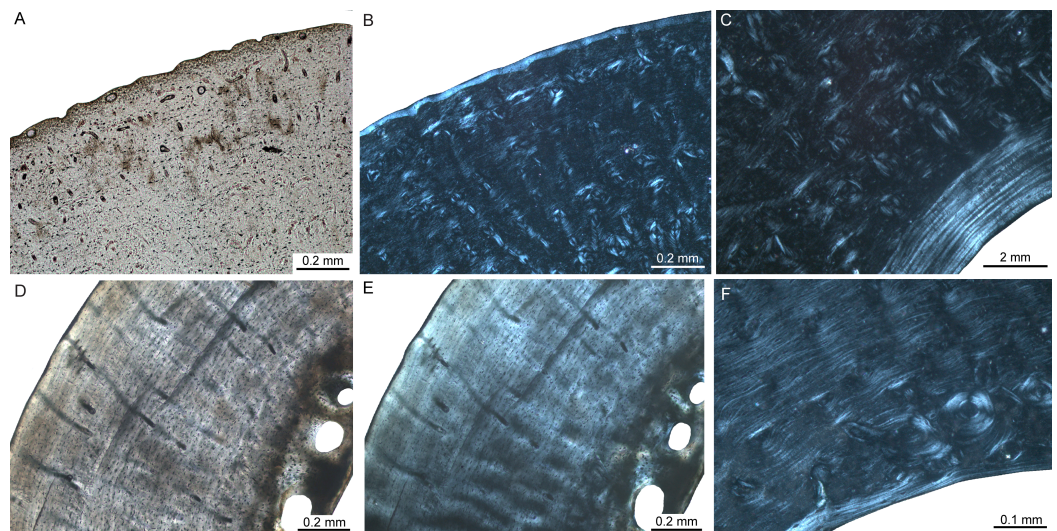
## Marsupialia

Despite marsupials being the second most diverse group of living mammals, so far their bone histology is poorly studied. Early contributions are those of *Foote (1911a)*, *Enlow & Brown (1958)* and *Singh, Tonna & Gandel (1974)* on the marsupial *Didelphis*. Our study of new samples of the white-eared opossum *Didelphis albiventris* and the latrine opossum *Lutreolina crassicaudata* ([Table 1](#)) essentially confirms their observations.

The bone cortex of long bones from *Didelphis* is characterised by a compacta surrounding the medullary cavity. The bone matrix is dominated by parallel-fibred bone ([Figs. 3A–3C](#)). Towards the inner part, the amount of woven-fibred bone increases ([Fig. 3C](#)). In most specimens remodelling is restricted to isolated secondary osteons as described by *Enlow & Brown (1958)*. Inner and outer circumferential layers are present. The inner circumferential layer consists of lamellar bone. The outer circumferential layer is dominated by parallel-fibred bone. The thickness of this layer varies between specimens. Except in one specimen with one LAG, no LAGs are present in the analysed specimens. The bone cortex is well vascularised throughout (see also *Enlow & Brown, 1958*), with an irregular pattern, i.e., radial, oblique, but mainly longitudinal primary vascular canals. *Lutreolina* shows a primary bone matrix that is dominated by parallel-fibred bone with simple primary longitudinal and radial to oblique vascular canals ([Figs. 3D–3F](#)). Remodelled areas are characterised by partially oblique secondary osteons ([Fig. 3F](#)). The inner circumferential layer is thin and formed by lamellar bone. The outer circumferential layer is, if present, formed by parallel-fibred bone. LAGs are not developed. The vascularity is less dense than in *Didelphis*. The combination of parallel-fibred bone with low vascularisation suggests slow apposition rates (*Chinsamy-Turan, 2012b; Huttenlocker, Woodward & Hall, 2013*).

## Xenarthra

Early contributions on xenarthran bone histology are *Quekett (1849a)*, *Quekett (1855)* and *Enlow & Brown (1958)*. Because dermal armour is an outstanding feature of xenarthrans, several studies focussed on the histology of osteoderms (e.g., *Wolf, 2007; Wolf, 2008; Chávez-Aponte et al., 2008; Hill, 2006; Vickaryous & Hall, 2006; Krmpotic et al., 2009; Vickaryous & Sire, 2009; Wolf, Kalthoff & Martin Sander, 2012; Da Costa Pereira et al., 2012*). These data, shed light on soft tissue structures of extinct xenarthrans, their phylogenetic relationships, and their functional morphology. The most detailed study up to date dealing with xenarthran long bone histology was performed by *Straehl et al. (2013)* (but see also *Ricqlès, Taquet & Buffrénil, 2009*). Straehl and colleagues sampled 67 long bones of 19 genera and 22 xenarthran species and studied bone microstructure as well as bone



**Figure 3** Femoral bone cortex of marsupials. Histological images (A) and (D) in linear polarised light and (B), (C), (E), and (F) in crossed polarised light. (A, B) Outer bone cortex of adult *Didelphis albiventris* specimen PIMUZ A/V 5279. Note the occurrence of simple primary longitudinal vascular canals and primary osteons in mainly parallel-fibred bone tissue. (C) Inner bone cortex of the same specimen displaying a distinct endosteal lamellar layer. (D, E) Bone cortex of adult *Lutreolina crassicaudata* specimen PIMUZ A/V 5275. (F) Inner cortex of same specimen. Note the occurrence of primary longitudinal vascular canals and primary osteons as well as Haversian systems within the parallel-fibred bone.

compactness trends. Primary bone tissue consists of a mixture of woven, parallel-fibred, and lamellar bone. Irregularly shaped vascular canals show longitudinal, reticular, or radial orientation. Anteaters are the only sampled taxa showing laminar orientation. Armadillo long bones are characterised by obliquely oriented secondary osteons in transverse sections, reflecting their complex morphology. LAGs are common in xenarthrans although being restricted to the outermost part of the bone cortex in armadillo long bones. Moreover, cingulates (armadillos and closely relative extinct taxa) show lower bone compactness than pilosans (sloths) and an allometric relationship between humeral and femoral compactness. Straehl and colleagues emphasise that remodelling is more developed in larger taxa as indicated by dense Haversian bone in adult specimens and discuss increased loading as a possible cause. [Amson et al. \(2014\)](#) assessed the timing of acquisition of osteosclerosis (increase in bone compactness) and pachyostosis (increase in bone volume) in long bones and ribs of the aquatic sloth *Thalassocnus* from the Neogene of Peru as the main osteohistological modifications of terrestrial tetrapods returning to water. They showed that such modifications can occur during a short geological time span, i.e., ca 4 Ma. Furthermore, the strongly remodelled nature of xenarthran bone histology allowed the reassignment of a rib previously ascribed to a sirenian to the aquatic sloth ([Amson et al., 2015](#)).

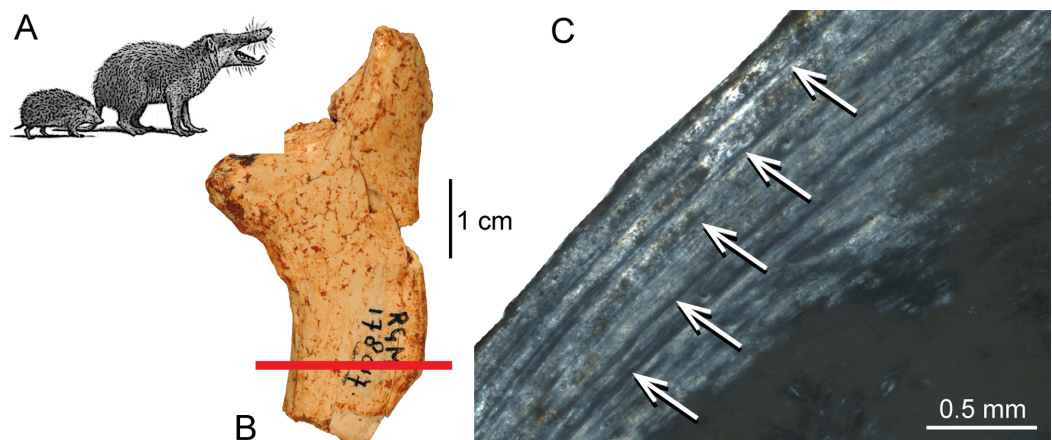
### Afrotheria

Early contributions on the bone histology of afrotherians are [Aeby \(1878\)](#) and [Schaffer \(1890\)](#) on sirenians and proboscideans, [Nopcsa & Heidsieck \(1934\)](#) on sirenians, [Vanderhoof \(1937\)](#), [Enlow & Brown \(1958\)](#), [Kaiser \(1960\)](#), [Mitchell \(1963\)](#) and [Mitchell](#)

(1964) on sirenians and desmostylians, and *Ezra & Cook (1959)* as well as *Cook, Brooks & Ezra-Cohn (1962)* on elephantids. *Ricqlès & Buffrénil (1995)* described pachyosteosclerosis in the sirenian *Hydrodamalis gigas*. *Buffrénil et al. (2008)* and *Buffrénil et al. (2010)* studied the ribs of 15 extant and extinct sirenian species representing 13 genera, one desmostylian, and 53 specimens of 42 extant species of terrestrial, aquatic, or amphibious mammals. In those studies, primary bone tissue in young specimens is constituted by fibrolamellar bone, whereas with increasing age, parallel-fibred bone tissue with longitudinal vascular canals and frequent LAGs is deposited. The authors showed that pachyostosis is subsequently regressed during evolution of the clade. In contrast, only by the end of the Eocene, osteosclerosis was fully developed. Furthermore, Buffrénil et al. argued that variable degrees of pachyostosis and osteosclerosis in extinct and extant sirenians were caused by similar heterochronic mechanisms bearing on the timing of osteoblast activity. *Hayashi et al. (2013)* analysed the histology of long bones, ribs, and vertebrae of four genera of desmostylians (usually considered as tethytherians, but see *Cooper et al., 2014*) and 108 specimens of extant taxa (ribs: 19 taxa, humeri: 62 taxa, femora: 16 taxa, vertebrae: 11 taxa) with various phylogenetic positions and ecologies by using thin sections and CT-scan data. Primary bone tissue in desmostylians consisted of parallel-fibred bone with multiple LAGs. By comparisons with extant mammals, they found that *Behemotops* and *Palaeoparadoxia* show osteosclerosis, *Ashoroa* pachyosteosclerosis (i.e., a combination of increase in bone volume and compactness), while *Desmostylus* shows an osteoporotic-like pattern (i.e., decrease in bone compactness) instead. Since it is known from extant mammals that increasing bone mass provides hydrostatic buoyancy and body trim control suitable for passive swimmers and shallow divers, whereas spongy bones are associated with hydrodynamic buoyancy control in active swimmers, they concluded that all desmostylians achieved an essentially aquatic lifestyle. However, the basal taxa *Behemotops*, *Paleoparadoxia*, and *Ashoroa* could be interpreted as shallow water swimmers hovering slowly or walking on the bottom, whereas the more derived taxon *Desmostylus* was a more active swimmer. The study has therefore shown that desmostylians are the second mammalian group after cetaceans to show a shift from bone mass increase to decrease during their evolutionary history.

As several tethytherian taxa are aquatic, the question of the ancestral lifestyle of the clade was raised. A femur and a humerus of the Eocene proboscidean *Numidotherium* were sampled by *Mahboubi et al. (2014)*. These authors recognised “large medullar cavities” (p. 506), which were considered suggestive of terrestrial habits. However, the illustrations provided by *Mahboubi et al. (2014)* show no opened medullary cavity, and trabecular bone occupies most of the cross-sectional area (labelled “medullary bone” by *Mahboubi et al., 2014: Fig. 4*).

*Sander & Andrassy (2006)* described the bone tissue of long bones from *Mammuthus primigenius* as laminar fibrolamellar bone. Due to poor preservation of the fossil bone tissue, the authors were not able to definitely confirm the occurrence of LAGs. The valuable study of *Curtin et al. (2012)* dealt with two aspects of bone histology. First, they described for the first time the bone tissue of fifteen bones (femora and tibiae) of eleven specimens of late-term-fetal, neonatal, and young juvenile extant and extinct elephantids representing



**Figure 4** Histological features of the femur of *Deinogalerix* sp. (A) Life reconstruction of *Deinogalerix koenigswaldi* in comparison to the extant hedgehog *Erinaceus* (modified from Agusti & Antón, 2002). (B) Adult right femur (specimen RGM.178017) in anterior view. Red bar indicates area and plane of sectioning. (C) Lateral bone cortex in crossed polarised light showing parallel-fibred bone and 5 LAGs. Occurrence of LAGs indicated by white arrows.

four species, including the insular dwarf mammoth *Mammuthus exilis* from the Late Pleistocene of Santa Rosa Island of the Californian Channel Islands. The bone tissue they found was predominantly laminar fibrolamellar bone. Remarkable was a distinct change in tissue microstructure marking the boundary between prenatal and postnatal bone deposition, i.e., a higher amount of large longitudinal vascular canals suggesting slightly higher postnatal growth rates. Secondly, besides histological thin sections, Curtin and colleagues employed synchrotron microtomography (SR- $\mu$ CT) for noninvasively obtaining high-resolution image-“slices.” They showed that, in comparison to histological sectioning, the SR- $\mu$ CT data lack shrinkage, distortion or loss of tissue, as is usually the case in histological sections. However, they stated that the quality of histological detail observable is by far superior in histological thin sections. The virtual microtomography enabled the authors to rank specimens by ontogenetic stage and quantified vascular patterns. They showed that bones of the Columbian mammoth, *M. columbi* had the thickest and largest number of laminae, whereas the insular dwarf mammoth, *M. exilis*, was characterised by its variability in that regard. The authors concluded that, qualitatively, patterns of early bone growth in elephantids are similar to those of juveniles of other tetrapods, including dinosaurs.

### Notoungulata

Notoungulates are an extinct, largely diverse, endemic group of Cenozoic South American mammals, ecologically similar to current hoofed ungulates. Only four taxa (*Toxodon*, *Nesodon*, *Mesotherium*, and *Paedotherium*) were subject to histological studies (Ricqlès, Taquet & Buffrénil, 2009; Forasiepi et al., 2015; Tomassini et al., 2014) from the more than 150 species recognised in the group. The bone samples were characterised by a well-vascularised compact cortex with mostly longitudinal vascular canals. Few irregularly oriented canals could be found. Osteocyte lacunae were large and very abundant.

Haversian bone was recorded in *Toxodon*, *Nesodon*, and *Mesotherium*. This is a common feature in mammalian bone (Enlow & Brown, 1958), probably caused by increased loading in large-bodied species as discussed by Straehl et al. (2013) for xenarthrans. Areas of primary bone matrix were visible between secondary osteons, which displayed a mostly parallel-fibred to lamellar organisation. Localized areas of woven bone characterised by round osteocyte lacunae were also present. The most external layer of the cortex consisted of parallel-fibred bone with very few secondary osteons and was in clear contrast to the heavily remodelled inner cortex. The study of Tomassini et al. (2014) on the palaeohistology of hemimandibles of *Paedotherium bonaerense* from the early Pliocene of Argentina discussed the processes affecting fossil remains before and after burial.

### Pantodonta

Pantodonts are an extinct group of mammals that comprised large-bodied, heavily built omnivores and herbivores from the Paleocene and Eocene of Laurasia. Only one study (Enlow & Brown, 1958) examined their bone histology. A rib of the Eocene pantodont *Coryphodon* showed primary lamellar bone with longitudinal vascularisation.

### Laurasiatheria—Eulipotyphla

The comprehensive work of Enlow & Brown (1958) was the first contribution on eulipotyphlan bone histology. They described the primary bone tissue of a *Talpa* tibia and a *Sorex* mandible as almost completely avascular lamellar bone. A humerus and radius from a juvenile showed in their outer cortex a “disorganised” (Enlow & Brown, 1958: p. 190) structure called it, being accompanied by oblique, radial, circumferential or longitudinal simple vascular canals). Klevezal (1996) discussed eulipotyphlan histology by emphasising growth marks (LAGs) in the bone cortex of mandibles and their value for skeletochronology. Meier et al. (2013) studied the bone compactness of humeri from eleven extant and eight fossil talpid species and two non-talpid species. They could not detect any pattern of global compactness related to biomechanical specialization, phylogeny, or size and concluded that at this small size the overall morphology of the humerus plays a predominant role in absorbing load. Morris (1970) evaluated the applicability of LAGs in extant hedgehog mandibles and found high correlation between age and LAG count.

In the giant galericine “hedgehog” *Deinogalerix* from the palaeoisland of Gargano (Table 1), Italy, the bone tissue at the inner layer of femur RGM.178017 and humerus RGM.425360 is characterised by parallel-fibred bone, whereas the outer layer and the trabecular bone is composed of lamellar bone (Figs. 4A–4C). In the bone cortex, simple longitudinal vascular canals and primary osteons are present. Primary bone tissue is partially replaced by secondary osteons. In a femur corresponding to an adult individual, five LAGs can be distinguished (Fig. 4C) indicating a minimum age of five years.

### Chiroptera

Enlow & Brown (1958) described the primary bone tissue in chiropterans as lamellar bone surrounding a non-cancellous medullary cavity. Klevezal (1996) described the presence of LAGs in chiropteran bone tissue. Herdina et al. (2010) described the bone tissue of the

baculum from three *Plecotus* species as lamellar bone surrounding a small medullary cavity similar to the arrangement of a Haversian system whereas the ends of the bone consisted of woven-fibred bone.

### Perissodactyla

[Enlow & Brown \(1958\)](#), [Sander & Andrassy \(2006\)](#), [Cuijpers \(2006\)](#), and [Hillier & Bell \(2007\)](#) described long bones and ribs of fossil and extant equids as being primarily plexiform fibrolamellar with longitudinal vascular canals, accompanied by extensive remodelling including the occurrence of dense Haversian bone. [Zedda et al. \(2008\)](#) found much Haversian tissue in extant horses and cattle. Osteons of the horse were more numerous and composed of a higher number of well-defined lamellae when compared to those of cattle. Diameter, perimeter, and area of osteons and Haversian canals were always higher in horses than in cattle and this pattern was related to their different locomotor behaviour. However, [Hillier & Bell \(2007\)](#) found non-significant differences between Haversian canals of horses and cattle. [Enlow & Brown \(1958\)](#) additionally described a stratified, circumferential pattern of vascular canals in a mandible of a Miocene chalicothere (*Moropus*), i.e., laminar fibrolamellar bone tissue *sensu* [Francillon-Vieillot et al. \(1990\)](#). The authors demonstrated an identical pattern of bone tissues and vascular canals in several ribs of fossil tapirs from the Eocene. [Sander & Andrassy \(2006\)](#) described bone tissue of tibiae of Late Pleistocene woolly rhinocerotid (*Coelodonta antiquitatis*). They found predominantly laminar fibrolamellar bone as primary bone type besides a high amount of Haversian bone. [Ricqlès, Taquet & Buffrénil \(2009\)](#) described the distribution of primary and secondary bone as well as vascularisation in thin sections of several extant and extinct perissodactyls including chalicotheres. [Cooper et al. \(2014\)](#) considered anthracobunids as stem-perissodactyls, and concluded osteosclerosis in limb bones and ribs of anthracobunids to be consistent with the occupation of shallow-water habitats. [Martinez-Maza et al. \(2014\)](#) analysed the bone tissue of humeri, femora, tibiae and metapodials of the equid *Hipparion concudense* from the upper Miocene site of Los Valles de Fuentidueña (Spain) and showed that the number of growth marks is similar across the different limb bones. They distinguished four age groups and determined that *Hipparion concudense* tended to reach skeletal maturity during its third year of life. [Martinez-Maza et al. \(2014\)](#) identified ontogenetic changes in bone structure and growth rate and distinguished three histological stages of ontogeny corresponding to immature, subadult, and adult individuals. [Nacarino-Meneses, Jordana & Köhler \(in press\)](#) studied an ontogenetic series of *Equus hemionus* (Asiatic wild ass). They analysed growth marks in femora of different ontogenetic stages. Bone tissue types and vascular canal orientation varied both during ontogeny and within a cross-section. Skeletochronology generally fitted previous age estimates from dental eruption patterns. A wild adult female attained skeletal maturity at the age of four, a wild male at five years of age.

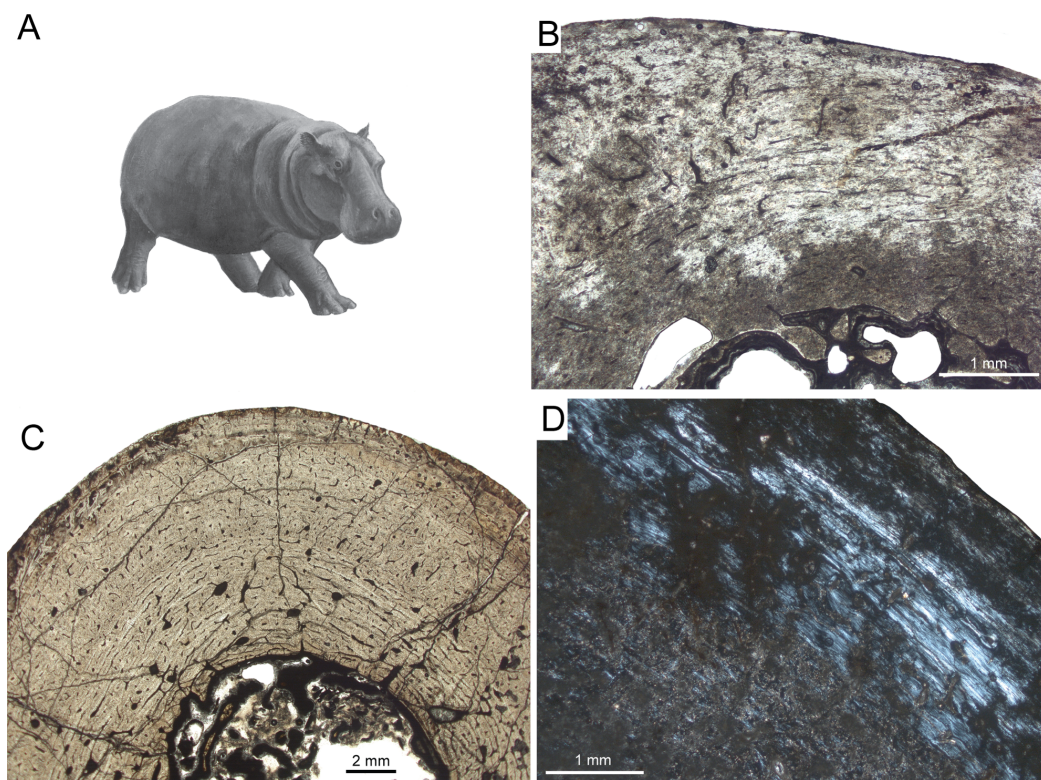
A rib of the giant rhinocerotoid *Paraceratherium* sp. ([Fig. 1G](#) and [Table 1](#)) from the Late Oligocene of Turkey displays dense Haversian bone ([Fig. 1I](#)), whereas the bone cortex is heavily recrystallised and does not allow observations on primary bone.



## Cetartiodactyla

[Enlow & Brown \(1958\)](#) gave a comprehensive overview on the bone histology of artiodactyls. The Miocene artiodactyls *Merycooidodon* and *Leptomeryx* showed in mandibles, maxillas, and ribs a reticular pattern of primary vascularisation next to secondary Haversian tissue. Extant taxa showed essentially plexiform fibrolamellar bone in long bones and reticular bone tissue in skull bones and mandibles. [Singh, Tonna & Gandel \(1974\)](#) studied the long bone tissue of a mature specimen of the blue duiker *Cephalophus manticola*, and two perinatal specimens of the Indian sambar *Cervus unicolor* and the reindeer *Rangifer tarandus*. Whereas *Cephalophus* showed primary longitudinal vascularisation, the perinatal cervids revealed a reticular pattern of vascular canals. Plexiform fibrolamellar bone ([Figs. 1B, 1C, 1E and 1F](#)) was confirmed as primary bone tissue in artiodactyls in subsequent publications ([Klevezal, 1996](#); [Horner, Ricqlès & Padian, 1999](#); [Cuijpers, 2006](#); [Sander & Andrassy, 2006](#); [Hillier & Bell, 2007](#); [Köhler et al., 2012](#); [Marín-Moratalla, Jordana & Köhler, 2013](#); [Kolb et al., 2015](#); [Jordana et al., in press](#)). [Marín-Moratalla et al. \(2014\)](#) identified the primary bone tissue in bovids as laminar to plexiform. They studied 51 femora representing 27 ruminant species in order to determine the main intrinsic or extrinsic factors shaping the vascular and cellular network of fibrolamellar bone. Specifically, the authors examined the correlation of certain life history traits in bovids, i.e., body mass at birth and adulthood as well as relative age at reproductive maturity. Quantification of vascular orientation and vascular and cell densities revealed that there is no correlation with broad climatic categories or life history. Instead, the authors found correlation with body mass since larger bovids showed more circular canals and lower cell densities than did smaller bovids. [Mitchell & Sander \(2014\)](#) suggested a three front model consisting of an apposition front, a Haversian substitution front, and a resorption front, and applied this model successfully to a humerus of red deer *Cervus elaphus*. They found moderate apposition and remodelling as well as slow resorption in the red deer specimen. [Hofmann, Stein & Sander \(2014\)](#) examined the lamina thickness in bone tissue (LD) in sauropodomorph dinosaurs and 17 mammalian taxa, including artiodactyls and perissodactyls. They found that LD is relatively constrained within the groups and that mean mammalian LD differs significantly from mean sauropodomorph LD. In suids, LD was higher than in other mammals. The authors therefore concluded that laminar vascular architecture is most likely determined by a combination of structural, functional as well as vascular supply and physiological causes.

For the present study, the bone cortex of one small (CKS 110/B), one intermediate (CKS 122/B), and one large juvenile (subadult; CKS 117) of the extinct Pleistocene dwarf hippopotamid of Cyprus, *Hippopotamus minor* (also called *Phanourios minor*, see [Van der Geer et al., 2010](#)), were examined ([Table 1](#)). In the juvenile femora the bone tissue is characterised by reticular to plexiform fibrolamellar bone with an endosteal, inner circumferential layer consisting of lamellar bone ([Fig. 5](#)). The bone is generally highly vascularised with primary longitudinal vascular canals and primary osteons towards the outer part of the cortex. There are no Haversian systems in the small juvenile ([Fig. 5B](#)), although their content increases during ontogeny and is highest in the subadult specimen. Although heavily recrystallized, an adult tibia of *Hippopotamus minor* shows

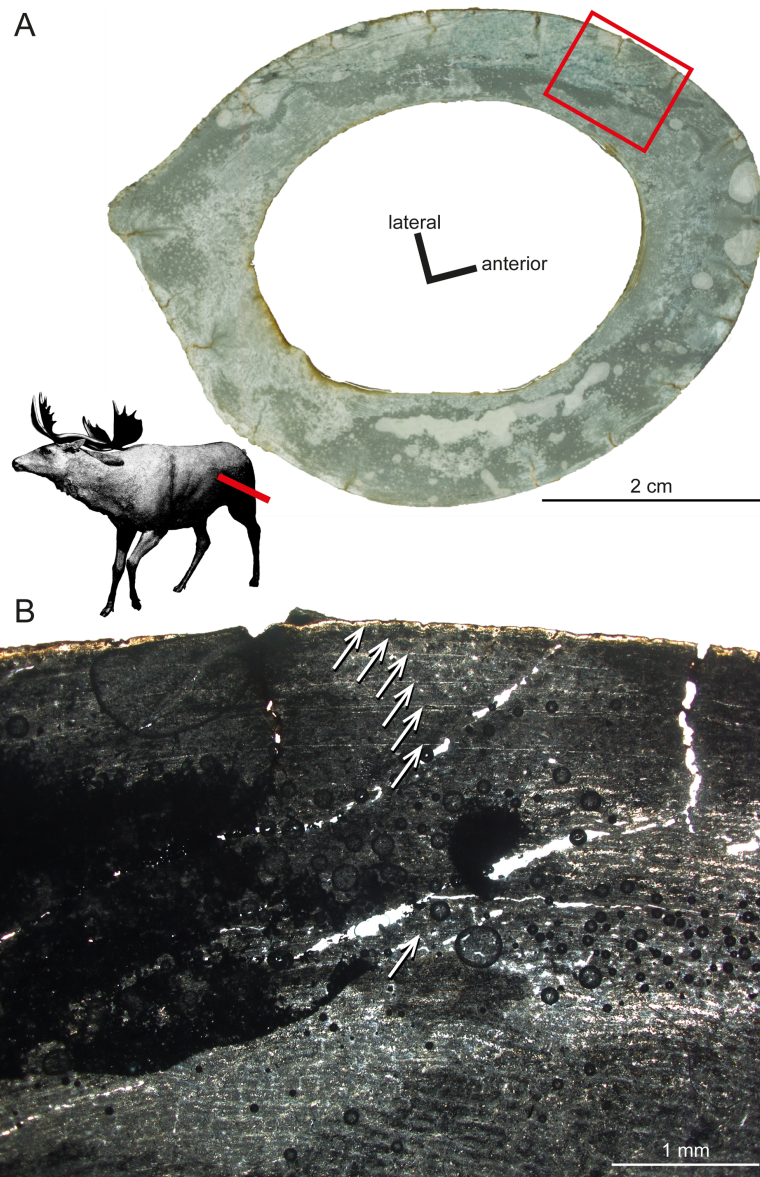


**Figure 5** Bone cortex of *Hippopotamus minor* femora. (A) Life reconstruction (from [Van der Geer et al., 2010](#); drawing: Alexis Vlachos) of another Mediterranean dwarf hippopotamid from the Middle Pleistocene of Crete. Since no life reconstruction of *Hippopotamus minor* is available, we here show the one of *Hippopotamus creutzburgi*. Histological images (B), and (C) in linear polarised light, (D) in crossed polarised light. (B) Small juvenile specimen CKS 110/B. (C) Intermediate sized juvenile specimen CKS 122/B showing reticular to plexiform vascularised bone. Note that the middle part mainly consists of reticular bone. (D) Outer bone cortex of large juvenile specimen CKS 117 showing mainly parallel-fibred bone. Black and grey areas indicate zones of recrystallisation due to diagenetic alteration of bone tissue.

strong remodelling with partially dense Haversian bone occurring from the inner to the outermost part of the cortex. Towards the outer cortex of the subadult femur ([Fig. 5D](#)) and typically for large mammals, the amount of parallel-fibred bone within the fibrolamellar complex increases, indicating a decrease in growth rate.

Another taxon sampled for the current study is *Sinomegaceros yabei* ([Table 1](#)), which is, as *Megaloceros*, a large-sized megacercine deer. Although a thorough description is prevented by the suboptimal preservation of the specimens, some of their histological features can be described here. The primary bone of the inner cortex is highly vascularised, being formed by fibrolamellar tissue with a mostly plexiform vascularisation. The outer cortex is in turn weakly vascularised. The adult femur OMNH QV-4062 features seven LAGs ([Fig. 6](#)), with a 2.57 mm thick second growth zone, which is even greater than the extreme values found in the elk, *Alces* and *Megaloceros* ([Kolb et al., 2015](#)), and which indicates, as in the latter taxa, a high growth rate.

Several authors focused on the bone histology of cetaceans and sirenians for their peculiar aquatic lifestyle. [Enlow & Brown \(1958\)](#) described the primary bone tissue of



**Figure 6** Histological features of *Sinomegaceros yabei*, the megacerine deer from the Pleistocene of Japan. Histological images in linear polarised light of an adult femur (OMNH QV-4062) depicting (A) the whole cross-section and (B) a close-up of the outer cortex. The red bar in (A) localises the approximated position of the section on the life reconstruction (courtesy of Hirokazu Tokugawa), and the red rectangle indicates the area of the close-up. (B) Note that seven LAGs are visible, as indicated by white arrows.

skull bones and vertebrae of the porpoise (*Phocoena phocoena*) as featuring a reticular vascularisation with a high amount of remodelling including the occurrence of dense Haversian bone. Buffrénil and colleagues studied the microstructure of bone tissue from baleen whales in several works. They found annually deposited well-defined LAGs in mandibular bone tissue of the common porpoise, *Phocoena phocoena* (Buffrénil, 1982). The humeral bone tissue of the common dolphin (*Delphinus delphis*) shows a cancellous

texture without an open medullary cavity and during ontogeny more bone eroded than deposited, indicating an osteoporotic-like process (Buffrénil & Schoevaert, 1988). Buffrénil & Casinos (1995), by using standard microscopic methods, and Zylberberg et al. (1998), by using scanning and transmission electron microscopy, studied the rostrum of the extant Blainville's beaked whale *Mesoplodon densirostris*, demonstrating a high density because of hypermineralised tissue with longitudinal fibres in dense Haversian bone. Buffrénil, Dabin & Zylberberg (2004) demonstrated that the petro-tympanic bone complex in common dolphins consists of reticular to laminar fibrolamellar bone, initially being deposited as loose spongiosa with hypermineralised tissue and without Haversian remodelling. Two Eocene archaeocete taxa featured pachyostosis with hyperostosis (excessive bone growth) of the periosteal cortex very similar to the condition present in some sirenians (Buffrénil et al., 1990). The comparative study by Gray et al. (2007) analysed the ribs of ten specimens representing five extinct cetacean families from the Eocene as they made their transition from a terrestrial/semiaquatic to an obligate aquatic lifestyle over a 10-million-year period. The authors compared those data to nine genera of extant mammals, amongst them modern dolphins, and found profound changes in microstructure involving a shift in bone function. The mechanisms of osteogenesis were flexible enough to accommodate the shift from a typical terrestrial form to one presenting osteosclerosis and pachyosteosclerosis, and then to osteoporosis in the first quarter of the evolutionary history of cetaceans. The limb bones and ribs of *Indohyus*, a taxon closely related to cetaceans, featured osteosclerosis, and considered indicative of the use of bottom-walking as swimming mode (Thewissen et al., 2007; Cooper et al., 2012). Ricqlès, Taquet & Buffrénil (2009) published the description of a rediscovered collection of thin sections from the 19th century French palaeontologist Paul Gervais including sections of cetacean bones. The most recent study on the bone microstructure of cetaceans is the one of Houssaye, Muizon & Gingerich (2015) analysing the bone microstructure of ribs and vertebrae of 15 archaeocete specimens, i.e., Remingtonocetidae, Protocetidae, and Basilosauridae using microtomography and virtual thin-sectioning (i.e., CT scanning). They found bone mass increase in ribs and femora, whereas vertebrae are essentially spongy. Humeri changed from compact to spongy whereas femora in basilosaurids became, once spurious for locomotion, reduced, displaying strong osteosclerosis. The authors concluded that Remingtonocetidae and Protocetidae probably swam in shallow water, whereas basilosaurids, for their osseous specializations similar to those of modern cetaceans, are considered capable of active swimming in the open-sea.

### Creodonta

As it is the case for many other vertebrate taxa, Enlow & Brown (1958) are still the only workers who analysed the "creodonts," mammalian predators from the Paleogene and Early Neogene of North America, Africa, and Eurasia. Bone tissue from mandibles, ribs, and long bones consists of primary lamellar bone with longitudinal/radial vascularisation and secondary Haversian tissue, generally similar to the bone tissue found in modern carnivorans.

## **Carnivora**

[Enlow & Brown \(1958\)](#) studied the mandible bone tissue of *Ursus* and found primary reticular bone and secondary dense Haversian bone, whereas a rib showed only dense Haversian bone. In the outer part, the bone cortex of *Ursus* consisted of plexiform bone. [Chinsamy, Rich & Vickers-Rich \(1998\)](#) found several LAGs in the zonal bone cortex of the polar bear. [Hayashi et al. \(2013\)](#) reported that the polar bear (*Ursus maritimus*) has microanatomical features close to those of active swimmers in its limb bones, particularly in the humerus. The microanatomy of the femur is intermediate between aquatic and terrestrial taxa, despite its morphological features, which do not show particular adaptation for swimming. However, *U. maritimus* long bones still display a true medullary cavity. The authors suggested that this result, notably the apparently stronger adaptation of the humerus for an aquatic mode of life, is probably linked to its swimming style because *U. maritimus* uses the forelimbs as the main propulsors during swimming.

*Mephitis* (skunk), *Procyon* (raccoon), *Mustela* (badger), *Felis* (cat), *Canis* (dog), and *Urocyon* (fox) all possess reticular and radial primary bone ([Enlow & Brown, 1958](#)). However, the bone cortex of adult specimens in these taxa was dominated by secondary Haversian bone. The outer cortex of *Canis* was composed of primary plexiform bone tissue. The mongoose (*Herpestes*) showed in its femur primary longitudinal vascularised bone devoid of Haversian remodelling whereas the bone cortex of the American mink (*Neovison vison*) was composed of reticular and Haversian bone.

[Singh, Tonna & Gandel \(1974\)](#) found in felids and mustelids lamellar bone with radial to longitudinal vascularisation. [Klevezal & Kleinenberg \(1969\)](#) found annual LAGs in the bone cortex of carnivorans. Several works dealt with the accuracy of LAGs in carnivorans in comparison to dental histology as a tool of age determination: [Johnston & Beauregard \(1969\)](#) (*Vulpes*), [Pascal & Delattre \(1981\)](#) (*Mustela*), [King \(1991\)](#) (*Mustela*), [Klevezal \(1996\)](#) (*Mustela*, *Martes*), [Pascal & Castanet \(1978\)](#) (*Felis*). The outcome was always in favour of dental cementum analysis. [Buffr nil & Pascal \(1984\)](#) concluded that in mink mandibles the deposition of LAGs is not strictly annual by using fluorescein and alizarin labelling.

The long bones of *Valenictus*, a Pliocene walrus (Odobenidae), were described as being osteosclerotic ([Dem r , 1994](#)). [Nakajima & Endo \(2013\)](#) and [Nakajima, Hirayama & Endo \(2014\)](#) analysed humeral microanatomy of multiple carnivore taxa including terrestrial, semi-aquatic and fully-aquatic taxa. The authors used CT-scans and found variations of bone organisation in the centre of bone ossification and in the humeral head among carnivorans including different modes of life. Cancellousness in the centre of bone ossification is relatively low in the semiaquatic taxa like the sea otter and is relatively high both in terrestrial taxa like the wolverine and highly aquatic taxa such as the southern elephant seal. Trabeculae in humeral heads are fine and well-organised in terrestrial to semi-aquatic taxa, while trabeculae from aquatic taxa are rather coarse and randomly oriented.

## **Euarchontoglires–Rodentia**

Early contributions to rodent bone histology were made by [Foote \(1911a\)](#), [Enlow & Brown \(1958\)](#) as well as [Singh, Tonna & Gandel \(1974\)](#). More recent works are by [Klevezal \(1996\)](#)

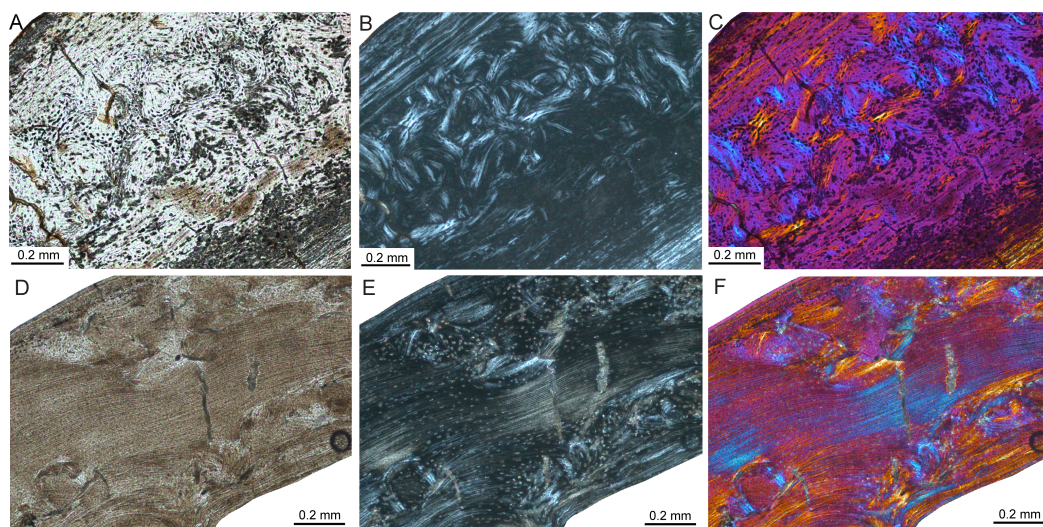
on rest lines and age determination, [Martiniaková et al. \(2005\)](#) on rat bone histology, and [Garcia-Martinez et al. \(2011\)](#) on the bone histology of dormice. The bone tissue of rodents mainly consists of lamellar or parallel-fibred bone with reticular, radial or longitudinal vascularisation as primary bone tissue. Development of Haversian systems is rare. [Geiger et al. \(2013\)](#) studied the bone cortex of a femur of the giant caviomorph *Phoberomys pattersoni* from the Miocene of Trinidad, and found it to be composed of lamellar-zonal bone. The sampled specimen showed alternating layers of compacted coarse cancellous bone and parallel-fibred/lamellar primary bone with a reticulum-like structure. The authors reported Haversian tissue absent. [Montoya \(2014\)](#) examined the bone microstructure of the extant subterranean rodent *Bathyergus suillus* (Bathyergidae). The author found thickening compacta during ontogeny in contrast to cursorial and bipedal mammals. Females of *Bathyergus suillus* displayed a wide variation of microanatomical parameters with resorptive activity already from juvenile ontogenetic stages.

The femoral bone cortex of *Mikrotia magna*, a giant insular murine rodent from the Late Miocene former island of Gargano (Italy; [Table 1](#)), consists merely of compact bone. The bone matrix of the middle part of the cortex is dominated by parallel-fibred bone with poor longitudinal but mainly reticular vascularisation being pervaded by mainly irregularly shaped and obliquely oriented secondary osteons ([Figs. 7A–7C](#)), producing a distinct disorganised pattern ([Enlow & Brown, 1958](#)). Additionally, delimited areas of fibrolamellar bone occur within the middle cortex. The inner and outer parts of the cortex are formed by lamellar bone with poor longitudinal but mainly radial vascularisation. The thickness of those parts varies throughout the circumference of the bone cortex and between samples, and intercalated thin layers consisting of woven-fibred bone are present. All the samples display LAGs. In the adult femur RGM.792085, four to five LAGs were counted. Resorption cavities are present close to the medullary cavity.

Thin sections of the femur of the dormouse *Leithia* sp. from the Pleistocene of Sicily ([Table 1](#)) are characterised by a compact cortex. The primary bone matrix, which is only present in the outermost periosteal part of the cortex, was formed by avascular lamellar bone. The rest of the cortex consists of compact coarse cancellous bone displaying thick layers of endosteal lamellar bone with poor longitudinal to radial vascularisation and areas of endosteal infilling of intertrabecular spaces with lamellar bone ([Figs. 7D–7F](#); [Enlow, 1962](#); [Francillon-Vieillot et al., 1990](#); [Prondvai et al., 2012](#)). The compact coarse cancellous bone is in turn invaded by mainly irregularly shaped and obliquely oriented secondary osteons. LAGs are absent in the sampled specimen. Large resorption cavities and small areas of fibrolamellar bone occur.

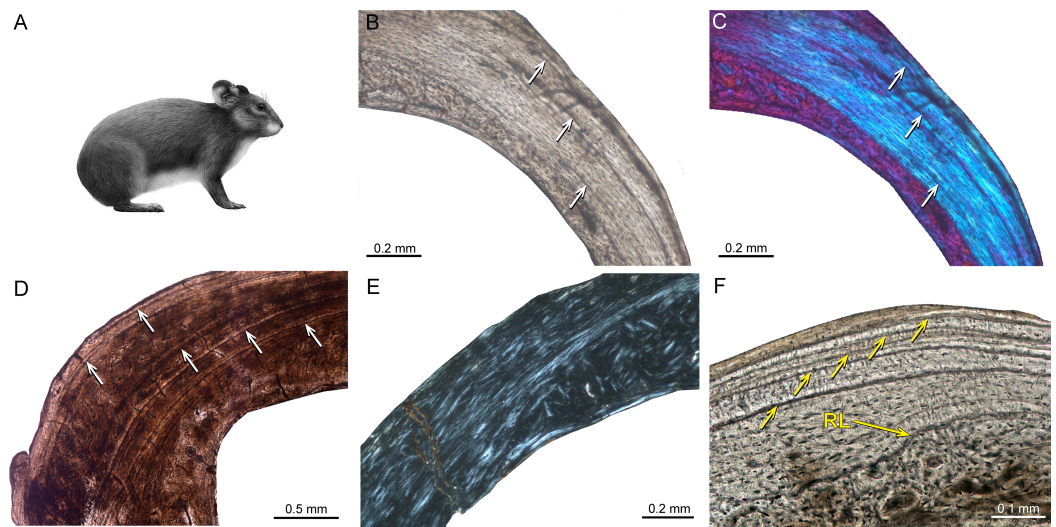
## Lagomorpha

For this study four different species of ochotonids (*Prolagus*) were investigated ([Table 1](#)). One mainland form (*Prolagus oeningensis* from La Grive France) and three island forms: the giant species *Prolagus sardus* (Sardinia, Italy) ([Fig. 8A](#)) and *P. imperialis* along with *P. apricenicus*, both from Gargano, Italy. Generally, the bone cortex of the femur and the humerus of *Prolagus* is compact. It is characterised by a bone matrix changing from



**Figure 7 Bone histology of fossil island rodents.** Histological images (A) and (D) in linear polarised light, (B) and (E) in crossed polarised light, and (C) and (F) in crossed polarised light with additional use of lambda compensator. (A–C) Adult *Mikrotia* sp. femur (specimen RGM.792085) showing disorganised, mainly parallel-fibred/lamellar bone in its centre. (D–F) Adult femur of *Leithia* sp. specimen NMB G 2160 displaying a mainly compacted coarse cancellous cortex of endosteal lamellar bone with areas of trabecular infilling and remodelling. Please note that periosteal lamellar bone is only present close to the bone surface.

fibrolamellar to parallel-fibred into lamellar bone from the inner cortex towards the OCL (Figs. 8B–8F). An endosteal lamellar layer is present. In most specimens the fibrolamellar or parallel-fibred bone is partly pervaded by mainly irregularly shaped and obliquely oriented secondary osteons, producing the “subendosteal layer of Haversian-like bone” *sensu* Pazzaglia *et al.* (2015: Fig. 6B). The primary bone cortex is in general weakly vascularised. Within the primary fibrolamellar and parallel-fibred bone, primary and simple longitudinal vascular canals as well as radial and reticular vascular canals occur and are arranged in an irregular manner. LAGs indicating minimum ages are present in some adult specimens. *Prolagus oeningensis* (Figs. 8B and 8C) has a maximum number of three LAGs, *Prolagus apricenicus* a maximum of two LAGs, and *Prolagus imperialis* as well as *Prolagus sardus* each have a maximum of five (Figs. 8D–8F). Femora from juvenile *Prolagus oeningensis* (PIMUZ A/V 4532) and *Prolagus sardus* (NMB Ty. 4974; Fig. 8E) as well as a humerus from a juvenile *Prolagus imperialis* (RGM.792102) are characterised in the inner and middle part of the cortex by longitudinal, radial, and reticular vascularised fibrolamellar bone with a high amount of woven bone. Towards the bone surface, the amount of parallel-fibred bone increases and the vascularisation changes into longitudinal simple and primary vascular canals. Primary bone tissue in juveniles is already invaded by mainly irregularly shaped and obliquely oriented secondary osteons in the inner and middle part of the cortex. Our observations on lagomorph bone histology essentially agree with Foote’s (1911a) and Enlow & Brown’s (1958) observations on lagomorphs. The same is the case for the study of Pazzaglia *et al.* (2015), who studied rabbit (*Oryctolagus cuniculus*) femora of different ontogenetic stages via micro CT-scanning. However, what they call



**Figure 8** Bone histology of fossil ochotonids. (A) Life reconstruction of *Prolagus sardus* (“Prolagus3,” courtesy of Wikimedia Commons—<http://commons.wikimedia.org>). Histological images (B), (D), (F) in linear polarised light, (C) in crossed polarised light with additional use of lambda compensator, and (E) in crossed polarised light. (B, C) Lateral cortex of adult *Prolagus oeningensis* femur PIMUZ A/V 4532 showing fibrolamellar bone partially pervaded by irregular secondary osteons in the inner part and mainly parallel-fibred bone in the middle and outer part as well as three LAGs. (D) Lateral cortex of adult *Prolagus imperialis* femur RGM.792096 displaying an identical pattern of bone tissue but five LAGs. (E) Posteromedial cortex of juvenile *Prolagus sardus* femur NMB Ty. 4974 showing an area of fibrolamellar bone with a high amount of woven-fibred bone in the inner part and an increasing amount of parallel-fibred bone in the middle and outer part of the cortex. (F) Outer anterolateral cortex of adult *Prolagus sardus* femur NMB Ty.12659 displaying five LAGs. Note that the line in the lower third of the cortex is a resorption line (RL) and not a LAG. Occurrence of LAGs indicated by white or yellow arrows.

laminar respectively plexiform bone tissue is not in agreement with the nomenclature of *Francillon-Vieillot et al. (1990)* used by us, i.e., longitudinal, radial, and reticular vascularisation. *Moncunill-Solé et al. (in press)* provided mass estimates of 350 g for the extinct continental *Prolagus cf. calpensis*, and 280–600 g for *Prolagus apricenicus* based on femoral measurements. Bone histological analysis suggests a longevity for *Prolagus apricenicus* of at least seven years (five years more than in our sample of *P. apricenicus*). Again, the bone histological traits observed in *Moncunill-Solé et al. (in press)* are essentially in agreement with our findings in *Prolagus*.

### Primates

Again, *Enlow & Brown (1958)* were the first to describe the bone tissue of extinct primates by sampling a mandible of the fossil Paleocene *Plesiolestes* and long bones of modern primates. The authors described primary bone tissue formed by lamellar bone. Vascularisation was mainly characterised by longitudinal primary vascular canals. Remodelling was locally abundant and the organisation of Haversian bone was dense in some areas of the bone cortex. Those observations have been confirmed by the comparative studies of *Cuijpers (2006)* and *Hillier & Bell (2007)* as well as in the conceptual studies of *Bromage et al. (2009; see also above)* and *Castanet (2006; see also above)*. *Castanet et al. (2004; see also above)* found the inner and thicker part of the bone cortex of *Microcebus*



formed by parallel-fibred bone containing primary blood vessels and scarce primary osteons. In contrast, the outer part of the cortex is not vascularised. [Crowder & Stout \(2012\)](#) have compiled a book covering the current utilisation of histological analysis of bones and teeth within the field of anthropology, including the biology and growth of bone, histomorphological analysis, and age determination. Extensive literature on hominoids, especially on bone pathologies in *Homo sapiens*, exists. To remain within the scope of this work, we cite here only some examples of those publications specific to this area. [Martínez-Maza, Rosas & García-Vargas \(2006\)](#) and [Martínez-Maza et al. \(2011\)](#) analysed bone surfaces under the reflected light and scanning electron microscope in order to decipher modelling and remodelling patterns in extant hominine facial skeletons and mandibles as well as in Neanderthal mandibles, explaining specific morphological traits. [Schultz & Schmidt-Schultz \(2014\)](#) examined fossil human bone and reviewed the methods and techniques of light microscopy, scanning electron microscopy, and the advantages of polarisation microscopy for palaeoanthropology. In this context it is noteworthy that the estimation of individual age in anthropology is carried out by mainly two methods ([Schultz & Schmidt-Schultz, 2014](#)): (1) the histomorphometric method (HMM) and (2) the histomorphologic method (HML). The HMM method is applied primarily to long bones (e.g., [Kerley, 1965](#); [Drusini, 1987](#)) and is based upon the frequencies of osteons (Haversian systems), fragmented osteons (interstitial lamellae), non-Haversian canals, and the percentage of the external circumferential lamellae. The HML method is based upon the morphology (presence, size, shape, development) of external and internal circumferential lamellae, osteons, fragmented osteons, and non-Haversian canals (e.g., [Schultz, 1997](#)). [Skinner et al. \(2015\)](#) studied the pattern of trabeculae distributions of metacarpals in *Australopithecus africanus* and Pleistocene hominins. They found a ‘human-like’ pattern, considered to be consistent with tool use. [Ryan & Shaw \(2015\)](#) quantified the proximal femur trabecular bone structure using micro-CT data from 31 extant primate taxa (229 individuals) and four distinct archaeological human populations (59 individuals) representing sedentary agriculturalists and mobile foragers. Trabecular bone variables indicate that the forager populations had significantly higher bone volume fraction, thicker trabeculae, and lower relative bone surface area compared with the two agriculturalist groups. The authors did not find any significant differences between agriculturalist and forager populations for trabecular spacing, number, or degree of anisotropy. Ryan & Shaw concluded there was a correspondence between human behaviour and bone structure in the proximal femur, indicating that more highly mobile human populations have trabecular bone structure similar to what would be expected for wild non-human primates of the same body mass, thus emphasising the importance of physical activity and exercise for bone health and the attenuation of age-related bone loss.

## SELECTED CONTRIBUTIONS ON MAMMALIAN HISTOLOGY

Many excellent papers on mammalian histology have appeared over the years, and we cannot discuss all of them. However, we feel that a number of these deserve a more detailed

evaluation as they address important aspects of applications of palaeohistological work. [Enlow & Brown's \(1958\)](#) outstanding comparative work on mammalian bone histology is not further mentioned in this section, since it is repeatedly discussed above.

[Klevezal & Kleinenberg \(1969\)](#) were the first to recognise the presence and importance of rest lines in the bone cortex of mammals for skeletochronological studies (see also [Chinsamy-Turan, 2005](#)). In their work, which was originally published in Russian in 1967, they found that in mammals, unlike the zonal bone forming in reptiles, the recording part including LAGs is the outer or periosteal zone (see also above). [Klevezal \(1996\)](#) found that rest lines are not formed from the first year of life in every mammalian taxon. Therefore, she suggested a variable correction factor for different mammalian taxa and concluded that the best structures for recording growth and age are dentine and especially cementum ([Klevezal, 1996](#)). In her detailed and comprehensive study of recording structures in mammals, she found that the growth rate of a particular structure can change according to the growth rate of the whole organism and that seasonal changes of growth intensity of an animal as a whole determine the formation of growth layers. [Klevezal \(1996\)](#) argued that changes in humidity, not temperature, may play a role as a seasonal factor in growth.

[Sander & Andrassy \(2006\)](#) described the occurrence of LAGs in 21 long bones (mainly tibiae and metatarsals) of herbivorous mammals from the Late Pleistocene of Germany comprising the extinct giant deer *Megaloceros giganteus*, the red deer *Cervus elaphus*, the reindeer *Rangifer tarandus*, the extinct bovids *Bos primigenius* and *Bison priscus*, the equid *Equus* sp., the extinct rhinocerotid *Coelodonta antiquitatis*, and the extinct elephantid *Mammuthus primigenius*. All samples showed fibrolamellar bone and a varying degree of remodelling and most of the long bones displayed LAGs. The authors questioned the argument that LAGs in dinosaur bone indicate ectothermy because of the frequently found LAGs in endothermic animals.

[Köhler & Moyà-Solà \(2009\)](#) examined the long-bone histology of *Myotragus*, a Plio-Pleistocene bovid from the Balearic Islands. They found lamellar-zonal tissue throughout the cortex, a trait exclusive to ectothermic reptiles. According to Köhler and colleagues, *Myotragus* grew unlike any other mammal but similar to crocodiles, i.e., at slow and flexible rates, ceased growth periodically, and attained somatic maturity late after twelve years. The authors concluded that this developmental pattern indicates that *Myotragus*, much like extant reptiles, synchronized its metabolic requirements with fluctuating resource levels.

[Kolb et al. \(2015\)](#) performed a histological analysis of long bones and teeth representing eleven extinct and extant cervid taxa, amongst them the dwarf island morphotypes of *Candiacervus* from the Late Pleistocene of Crete and the giant deer *Megaloceros giganteus*, both in a clade together with fallow deer (*Dama dama*) among extant species. Bone tissue types observed were similar, indicating a comparable mode of growth across the eight species examined, with long bones mainly possessing primary plexiform fibrolamellar bone ([Figs. 1B, 1C, 1E and 1F](#)). Dwarf *Candiacervus* were characterised by low growth rates, *Megaloceros* by high rates, and the lowest recorded rates were those of the Miocene small stem cervid *Procervulus praelucidus*. It should be noted that *Sinomegaceros yabei*, sampled for the present study, features a very thick second growth zone, which suggests

a high growth rate, comparable to that of the closely related *Megaloceros*. Skeletal maturity estimates (see also above) indicated late attainment in sampled *Candiacervus* and *Procervulus*. Tooth cementum analysis of first molars of two senile *Megaloceros giganteus* specimens revealed ages of 16 and 19 years whereas two old dwarf *Candiacervus* specimens gave ages of 12 and 18 years. [Kolb et al. \(2015\)](#) concluded that the bone histological condition found in *Candiacervus* had features in common with that of *Myotragus* ([Köhler & Moyà-Solà, 2009](#)), but was achieved with a lesser modification of bone tissue and suggested various modes of life history and size evolution among island mammals. [Amson et al. \(in press\)](#) examined further ‘stem-cervid’ bone histology in describing that of other Miocene taxa, *Dicrocerus elegans* and *Euprox* sp. With their inclusion in the dataset of [Kolb et al. \(2015\)](#), they estimated ancestral growth rates among cervids, and studied their correlation with body size. The skeletochronology of *Dicrocerus* and *Euprox* suggested relatively high and intermediate growth rates respectively for their body sizes, differing from the condition of *Procervulus*, and hence documenting diversity in the life history traits of Miocene cervids.

[Dumont et al. \(2013\)](#) documented the microstructure of vertebral centra using 2D histomorphometric analyses of vertebral centra from 98 therian mammal species that cover the main size ranges and locomotor adaptations known in therian taxa. The authors extracted eleven variables relative to the development and geometry of trabecular networks from CT scan mid-sagittal sections. Random taxon reshuffling and squared change parsimony indicated a phylogenetic signal in the majority of the variables. Furthermore, based on those variables, it was possible to determine three categories of locomotion among the sampled taxa: (a) terrestrial + flying + digging + amphibious forms, (b) coastal oscillatory aquatic taxa, and (c) pelagic oscillatory aquatic forms represented by oceanic cetaceans. Dumont and colleagues concluded that, when specific size increases, the length of trabecular networks, as well as trabecular proliferation, increase with positive allometry. They found that, by using six structural variables, locomotion mode can be predicted with a 97.4% success rate for terrestrial forms, 66.7% for coastal oscillatory, and 81.3% for pelagic oscillatory.

## DISCUSSION ON BONE HISTOLOGY OF ISLAND MAMMALS

Within our overview, we have a large sample of insular mammals. Islands have their own set of rules when it comes down to evolution ([Van der Geer et al., 2010](#); [Lomolino et al., 2012](#); [Lomolino et al., 2013](#)), and in the following we explore to what extent insular evolution may effect bone histology.

Three juvenile specimens of the dwarf island hippopotamid *Hippopotamus minor* from the Late Pleistocene of Cyprus show reticular to plexiform fibrolamellar bone, which does not indicate an island-specific pattern of bone growth or life history but a mode of growth similar to continental artiodactyl relatives instead. The bone cortex of the dormouse *Leithia* sp. from the Pleistocene of Sicily is characterised by primary lamellar bone and a high amount of compact coarse cancellous bone. *Mikrotia magna*, the giant island

rodent from the Late Miocene of Gargano, Italy shows in the middle part of the cortex parallel-fibred bone with reticular vascularisation and mainly irregularly shaped and obliquely oriented secondary osteons. The inner and outer parts of the cortex are formed by lamellar bone. [Garcia-Martinez et al. \(2011\)](#) did not find compact coarse cancellous bone in their sample of extant dormice. The high amount of compact coarse cancellous bone and therefore strong inward growth ([Enlow, 1962](#)) in our *Leithia* sp. specimen might point towards an island specific modification of bone tissue. However, sampling of more specimens in order to confirm this observation is necessary. The composition of bone tissues found in *Mikrotia magna* is in general similar to the one encountered in extant murid rodents ([Foote, 1911a](#); [Enlow & Brown, 1958](#); [Enlow, 1962](#); [Singh, Tonna & Gandel, 1974](#); [Martiniaková et al., 2005](#)). The partially high amount of remodelling encountered in *Mikrotia* is likely related to high individual ages. In the bone cortex of three fossil species of insular giant *Prolagus* and the fossil continental lagomorph *Prolagus oeningensis* are mainly parallel-fibred bone and reticular, radial as well as longitudinal vascularisation indicating a similarity of bone histological arrangements in continental and island species of rodents and lagomorphs.

The highest age found in *Prolagus sardus* and *P. imperialis* of five years are well within the known longevitys of extant ochotonids such as *Ochotona princeps* (seven years in captivity) and *O. hyperborean* (9.4 years in captivity) ([Tacutu et al., 2013](#)). [Moncunill-Solé et al. \(in press\)](#) suggested a longevity for *Prolagus apricenicus* of at least seven years (five years more than in our sample of *P. apricenicus*). Based on the predictions by the body mass inferred, [Moncunill-Solé et al. \(in press\)](#) suggested a move to the slow end of the fast-slow continuum (maturing later and fewer offspring) in *Prolagus apricenicus*. A minimal individual age deduced from growth marks in the bone tissue of *Deinogalerix* specimen RGM 178017 lies also well within the known longevitys for extant erinaceids such as *Erinaceus europaeus* (11.7 years in captivity), *E. concolor* (seven years in captivity), and *E. amurensis* (9.4 years in captivity). Longevity data for extant galericines are not yet available ([Tacutu et al., 2013](#)).

The insular dwarf bovid *Myotragus balearicus* from Majorca showed an important decrease in bone growth rate and an evolution towards a slow life history, i.e., delayed maturity and long lifespan ([Köhler & Moyà-Solà, 2009](#); [Köhler, 2010](#); [Jordana & Köhler, 2011](#); [Jordana et al., 2012](#); [Moncunill-Solé et al., in press](#); but see [Raia, Barbera & Conte \(2003\)](#) for an opposite case of life history modification in Sicilian dwarf elephants). The authors suggest these findings to be trends for island mammals in agreement with [MacArthur & Wilson \(1967\)](#), as well as life history theory ([Stearns, 1992](#)) and that the degree of these modifications depends on multiple factors such as island size, distance from mainland, climate, phylogeny, time of evolution and others (see also [Moncunill-Solé et al., 2014](#)). *Myotragus* dwelt on Majorca for 5.2 Ma and therefore underwent an exceptionally long time of evolution ([Van der Geer et al., 2010](#)) and resource limitation ([Köhler & Moyà-Solà, 2009](#)). A similarly high degree of bone histological and life history modification as described by [Köhler & Moyà-Solà \(2009\)](#) for *Myotragus* in comparison to continental artiodactyls has not been recorded for the insular mammals *Deinogalerix*

sp., *Hippopotamus minor*, *Leithia* sp., *Mikrotia magna*, or for several species of *Prolagus* in comparison to their mainland relatives.

A variable degree of modification in bone tissue and life history could be related to shorter persistence times and different island size ([Lomolino et al., 2012](#); [Lomolino et al., 2013](#); [Kolb et al., 2015](#)), in line with [Austad & Fischer \(1991\)](#), [McNab \(1994\)](#), [McNab \(2002\)](#), [McNab \(2010\)](#), [Raia, Barbera & Conte \(2003\)](#), [Curtin et al. \(2012\)](#) and [Kolb et al. \(2015\)](#).

## CONCLUSIONS

A large variety of bone tissues and vascularisation patterns is encountered in mammalian bone reaching from lamellar or parallel-fibred to fibrolamellar or woven-fibred bone, largely depending on taxon and individual age. A plexiform to laminar organisation of vascular canals within fibrolamellar bone is typically found in taxa containing large-bodied species such as non-mammalian cynodonts, laurasiatherians, and afrotherians. The deposition of Haversian systems throughout ontogeny of non-mammalian cynodonts and mammals is common. [Table 2](#) gives a summary on general patterns of bone histological features encountered in major cynodont clades.

We suggest the presence of various modes of bone histological modification and mammalian life history evolution on islands depending on factors of island evolution such as island size, distance from mainland, climate, phylogeny, and time of evolution. Further bone histological comparisons and sampling of more specimens as well as species of fossil insular endemics and their mainland relatives within an ontogenetic framework would contribute significantly to the knowledge of the ecology of past island ecosystems.

## FUTURE RESEARCH FIELDS

### New technologies

3D reconstructions attained by virtual image analysis gain increasing importance for palaeontological research at the anatomical, microanatomical, and even histological levels ([Sanchez et al., 2012](#); [Clément & Geffard-Kuriyama, 2010](#); [Curtin et al., 2012](#); see also [Ricqlès, 2011](#)). The potential advantages of virtual imaging as a method are evident: firstly, specimens are not damaged by invasive sampling. Secondly, a third dimension, usually achieved by time consuming serial sectioning or preparation of orthogonally oriented thin sections, is easily realizable. Thirdly, virtual imaging techniques allow continuous “zooming” from the histological to the micro- and macronatomical levels of structural organisation. High resolution synchrotron virtual histology provides new 3D insights into the submicron-scale histology of fossil and extant bones. This is based on the development of new data acquisition strategies, pink-beam configurations, and improved processing tools ([Sanchez et al., 2012](#)). Nevertheless, for the high resolution optical properties of a polarisation microscope and its applications for identification and analysis of bone microstructure, as well as for the comparatively low amount of financial resources needed, traditional thin sections are far from being completely replaced by virtual imaging techniques. Moreover, new statistical methods allow extraction of phylogenetic signals from bone microstructures and of high specimen numbers ([Laurin, 2004](#); [Laurin, Girondot](#)

**Table 2** Summary of histological traits of non-mammalian cynodonts and major mammalian clades (based on material sampled and references cited in the current study). The terminology follows *Francillon-Vieillot et al. (1990)*.

Histological traits	Non-mammalian cynodonts	Multituberculata and early mammals	Monotremata	Marsupialia	Euarchontoglires	Laurasiatheria	Afrotheria	Xenarthra
Main primary bone tissue types	fibrolamellar, parallel-fibred, lamellar	fibrolamellar, parallel-fibred, lamellar	fibrolamellar, lamellar	fibrolamellar, parallel-fibred, lamellar	lamellar or parallel-fibred	fibrolamellar	fibrolamellar	fibrolamellar
Main vascularisation patterns	plexiform, laminar, longitudinal, reticular, radial	longitudinal, radial, reticular	longitudinal, radial, reticular, laminar	longitudinal, radial	longitudinal, reticular, radial	longitudinal, reticular, radial, laminar, plexiform	circumferential, longitudinal, reticular, laminar, plexiform	longitudinal, reticular, radial
Lines of arrested growth	present	present	not documented	present	present	present	present	present
Remodelling	Haversian bone	not documented	Haversian bone	Haversian bone	Haversian bone	Haversian bone	Haversian bone	Haversian bone

& Loth, 2004; Cubo et al., 2008). In addition to a phylogenetic signal, bone tissues are also influenced by biomechanical and ecological signals (Cubo et al., 2005; Cubo et al., 2008; Laurin, Girondot & Loth, 2004; Laurin, 2004; Ricqlès & Cubo, 2010; Hayashi et al., 2013). Here too, the advances in high performance computers and software open possibilities to investigate the variability in bone tissues by taking multiple factors into account. The creation of histological databases will soon be necessary due to an increasing number of palaeohistological publications and growing collections of thin sections (Ricqlès, Castanet & Francillon-Vieillot, 2004; Ricqlès, Taquet & Buffrénil, 2009; Bromage, 2006; Krilloff et al., 2008; Scheyer, 2009–2015; Canoville & Laurin, 2010; O’Leary & Kaufman, 2012).

### Extant vertebrate biology

Actualistic models are essential for the interpretation of fossil hard tissues in every sense, no matter if developmental and life historical, histophysiological, morphological, ecological, or systematic. Living animals present the basis for inferring palaeobiological conclusions and this has already been performed in several bone histological works (e.g., Canoville & Laurin, 2010; Köhler et al., 2012; Marín-Moratalla, Jordana & Köhler, 2013; Marín-Moratalla et al., 2014; Kolb et al., 2015).

In regard to deciphering life history signals, the actualistic approach is fundamental and will become increasingly more so (e.g., Köhler et al., 2012; Marín-Moratalla, Jordana & Köhler, 2013; Marín-Moratalla et al., 2014; Kolb et al., 2015). Life history variables such as annual growth rate, skeletal/sexual maturity, and longevity and their signal in bone microstructure help to understand palaeobiology not only of fossil mammals but also of tetrapods in general. It is possible to use bone histology to quantify growth rates and vascularisation or cellular density in mammals as a relative proxy for growth rate (Curtin et al., 2012; Kolb et al., 2015; Marín-Moratalla, Jordana & Köhler, 2013; Marín-Moratalla et al., 2014; Jordana et al., *in press*), whereby the existing literature on the paleobiology of dinosaurs has been used as a starting point. However, not every methodological approach used for dinosaurs is applicable or relevant for mammals (e.g., Erickson, Curry Rogers & Yerby, 2001; Griebeler, Klein & Sander, 2013; Kolb et al., 2015). No one stated it better than Armand de Ricqlès: “The possibilities of using bone histology of extant vertebrates for various fundamental or applied research, whether on life history traits, ecology, or microevolution, are simply boundless.” (Ricqlès, 2011).

### ACKNOWLEDGEMENTS

Alexandra Wegmann and Fiona Straehl are thanked for their help with the bone histological preparation, Madeleine Geiger for the fruitful discussions (all Palaeontological Institute of the University of Zurich (PIMUZ), Switzerland), and Ashley Latimer (PIMUZ) and Cathy Ridgway for English corrections. Likewise, we thank Xavier Jordana and P. Martin Sander for their thorough and critical reviews, which helped greatly to improve the manuscript.

## ADDITIONAL INFORMATION AND DECLARATIONS

### Funding

This study was funded by the SNSF (3100A0-133032/1 and 31003A-149605 to MRS-V; 31003A-149506 to TMS), the Forschungskredit of the University of Zurich (No. 8264 to CK) and the JSPS KAKENHI (26800270 Grant-in-Aid for Young Scientists B to SH). The research of AVDG was co-financed by the European Union (European Social Fund) and Greek national funds through the Operational Program “Education and Lifelong Learning” of the National Strategic Reference Framework (NSRF)-Research Funding Program: THALIS–UOA “Island biodiversity and cultural evolution” (MIS375910, KA:70/3/11669). The funders had no role in study design, data collection and analysis, decision to publish, or preparation of the manuscript.

### Grant Disclosures

The following grant information was disclosed by the authors:

SNSF: 3100A0-133032/1, 31003A-149605, 31003A-149506.

Forschungskredit of the University of Zurich: 8264.

JSPS KAKENHI: 26800270 Grant-in-Aid for Young Scientists B.

European Union (European Social Fund) and Greek national funds: MIS375910, KA:70/3/11669.

### Competing Interests

Shoji Hayashi is an employee of Osaka Museum of Natural History.

### Author Contributions

- Christian Kolb conceived and designed the experiments, performed the experiments, analyzed the data, wrote the paper, prepared figures and/or tables, reviewed drafts of the paper, took micrographs.
- Torsten M. Scheyer analyzed the data, reviewed drafts of the paper.
- Kristof Veitschegger and Analia M. Forasiepi performed the experiments, analyzed the data, wrote the paper, reviewed drafts of the paper, took micrographs.
- Eli Amson performed the experiments, analyzed the data, wrote the paper, prepared figures and/or tables, reviewed drafts of the paper, took micrographs.
- Alexandra A.E. Van der Geer, Lars W. Van den Hoek Ostende and Shoji Hayashi reviewed drafts of the paper.
- Marcelo R. Sánchez-Villagra conceived and designed the experiments, contributed reagents/materials/analysis tools, wrote the paper, reviewed drafts of the paper.

### Animal Ethics

The following information was supplied relating to ethical approvals (i.e., approving body and any reference numbers):



Naturalis Biodiversity Center, Leiden, the Netherlands, Loïc Costeur (Naturhistorisches Museum Basel, Switzerland), George Lyras (Museum of Paleontology and Geology, University of Athens, Greece), Nigel Monaghan (National Museum of Ireland, Natural History), Hiroyuki Taruno (Osaka Museum of Natural History, Japan), Frank Zachos and Alexander Bibl (Naturhistorisches Museum Wien, Austria), Pierre-Olivier Antoine (Institut des Sciences de l'Evolution-Montpellier, France), and Ebru Albayrak (MTA Natural History Museum, The General Directorate of Mineral Research and Exploration, Ankara, Turkey) approved sampling of specimens for histological study.

## REFERENCES

- Aeby C. 1878.** Das histologische Verhalten fossilen Knochen- und Zahngewebes. *Archiv für Mikroskopische Anatomie* **15**:371–382 DOI [10.1007/BF02933858](https://doi.org/10.1007/BF02933858).
- Agustí J, Antón M. 2002.** *Mammoths, sabertooths and hominids*. New York: Columbia University Press.
- Amprino R. 1947.** La structure du tissu osseux envisagée comme l'expression de différences dans la vitesse de l'accroissement. *Archives de Biologie* **58**:315–330.
- Amson E, Kolb C, Scheyer TM, Sánchez-Villagra MR.** Growth and life history of middle Miocene deer (Mammalia, Cervidae) based on bone histology. *Comptes Rendus Palevol* In Press DOI [10.1016/j.crpv.2015.07.001](https://doi.org/10.1016/j.crpv.2015.07.001).
- Amson E, Muizon C de, Domning DP, Argot C, Buffrenil V de. 2015.** Bone histology as a clue for resolving the puzzle of a dugong rib in the Pisco Formation, Peru. *Journal of Vertebrate Paleontology* **35**(3):e922981 DOI [10.1080/02724634.2014.922981](https://doi.org/10.1080/02724634.2014.922981).
- Amson E, Muizon C de, Laurin M, Argot C, Buffrenil V de. 2014.** Gradual adaptation of bone structure to aquatic lifestyle in extinct sloths from Peru. *Proceedings of the Royal Society B* **281**:1–6 DOI [10.1098/rspb.2014.0192](https://doi.org/10.1098/rspb.2014.0192).
- Austad SN, Fischer KE. 1991.** Mammalian aging, metabolism, and ecology: evidence from the bats and marsupials. *Journal of Gerontology* **46**:B47–B53 DOI [10.1093/geronj/46.2.B47](https://doi.org/10.1093/geronj/46.2.B47).
- Botha J, Chinsamy A. 2000.** Growth patterns deduced from the bone histology of the cynodonts *Diademodon* and *Cynognathus*. *Journal of Vertebrate Paleontology* **20**:705–711 DOI [10.1671/0272-4634\(2000\)020\[0705:GPDFTB\]2.0.CO;2](https://doi.org/10.1671/0272-4634(2000)020[0705:GPDFTB]2.0.CO;2).
- Botha J, Chinsamy A. 2004.** Growth and life habits of the Triassic cynodont *Trirachodon*, inferred from bone histology. *Acta Palaeontologica Polonica* **49**:619–627.
- Botha J, Chinsamy A. 2005.** Growth patterns of *Thrinaxodon liorhinus*, a non-mammalian cynodont from the Lower Triassic of South Africa. *Palaeontology* **48**:385–394 DOI [10.1111/j.1475-4983.2005.00447.x](https://doi.org/10.1111/j.1475-4983.2005.00447.x).
- Botha-Brink J, Abdala F, Chinsamy A. 2012.** The radiation and osteohistology of nonmammaliaform cynodonts. In: Chinsamy-Turan A, ed. *Forerunners of mammals: radiation, histology, biology*. Bloomington: Indiana University Press, 223–246.
- Bromage TG. 2006.** *Donald H. Enlow digital image library*. Available at <http://www.nyu.edu/dental/enlow/> (accessed 13 May 2015).
- Bromage TG, Lacruz RS, Hogg R, Goldman HM, McFarlin SC, Warshaw J, Dirks W, Perez-Ochoa A, Smolyar I, Enlow DH, Boyde A. 2009.** Lamellar bone is an incremental tissue reconciling enamel rhythms, body size, and organismal life history. *Calcified Tissue International* **84**:388–404 DOI [10.1007/s00223-009-9221-2](https://doi.org/10.1007/s00223-009-9221-2).

- Buffrénil V de. 1982.** Données préliminaires sur la présence de lignes d'arrêt de croissance périostiques dans la mandibule du marsouin commun, *Phocoena phocoena* (L.), et leur utilisation comme indicateur de l'âge. *Canadian Journal of Zoology* **60**:2557–2567 DOI [10.1139/z82-328](https://doi.org/10.1139/z82-328).
- Buffrénil V de, Astibia H, Pereda Suberbiola X, Berreteaga A. 2008.** Variation in bone histology of middle Eocene sirenians from western Europe. *Geodiversitas* **30**:425–432.
- Buffrénil V de, Canoville A, D'Anastasio R, Domning DP. 2010.** Evolution of sirenian pachyosteosclerosis, a model-case for the study of bone structure in aquatic tetrapods. *Journal of Mammalian Evolution* **17**:101–120 DOI [10.1007/s10914-010-9130-1](https://doi.org/10.1007/s10914-010-9130-1).
- Buffrénil V de, Casinos A. 1995.** Observations histologiques sur le rostre de *Mesoplodon densirostris* (Mammalia, Cetacea, Ziphiidae): le tissu osseux le plus dense connu. *Annales des Sciences Naturelles, Zoologie, Paris, 13e Série* **16**:21–36.
- Buffrénil V de, Castanet J. 2000.** Age estimation by skeletochronology in the Nile monitor (*Varanus niloticus*), a highly exploited species. *Journal of Herpetology* **34**:414–424 DOI [10.2307/1565365](https://doi.org/10.2307/1565365).
- Buffrénil V de, Dabin W, Zylberberg L. 2004.** Histology and growth of the cetacean petrotympanic bone complex. *Journal of Zoology* **262**:371–381 DOI [10.1017/S0952836903004758](https://doi.org/10.1017/S0952836903004758).
- Buffrénil V de, Pascal B. 1984.** Croissance et morphogenèse postnatales de la mandibule du vison (*Mustela vison*, Schreiber): données sur la dynamique et l'interprétation fonctionnelle des dépôts osseux mandibulaires. *Canadian Journal of Zoology* **62**:2026–2037 DOI [10.1139/z84-297](https://doi.org/10.1139/z84-297).
- Buffrénil V de, Ricqlès AD, Ray CE, Domning DP. 1990.** Bone histology of the ribs of the archaeocetes (Mammalia: Cetacea). *Journal of Vertebrate Paleontology* **10**:455–466 DOI [10.1080/02724634.1990.10011828](https://doi.org/10.1080/02724634.1990.10011828).
- Buffrénil V de, Schoevaert D. 1988.** On how the periosteal bone of the delphinid humerus becomes cancellous: ontogeny of a histological specialization. *Journal of Morphology* **198**:149–164 DOI [10.1002/jmor.1051980203](https://doi.org/10.1002/jmor.1051980203).
- Bybee PJ, Lee AH, Lamm ET. 2006.** Sizing the Jurassic theropod dinosaur *Allosaurus*: assessing growth strategy and evolution of ontogenetic scaling of limbs. *Journal of Morphology* **267**:347–359 DOI [10.1002/jmor.10406](https://doi.org/10.1002/jmor.10406).
- Canoville A, Laurin M. 2010.** Evolution of humeral microanatomy and lifestyle in amniotes, and some comments on palaeobiological inferences. *Biological Journal of the Linnean Society* **100**:384–406 DOI [10.1111/j.1095-8312.2010.01431.x](https://doi.org/10.1111/j.1095-8312.2010.01431.x).
- Castanet J. 1994.** Age estimation and longevity in reptiles. *Gerontology* **40**:174–192 DOI [10.1159/000213586](https://doi.org/10.1159/000213586).
- Castanet J. 2006.** Time recording in bone microstructures of endothermic animals; functional relationships. *Comptes Rendus Palevol* **5**:629–636 DOI [10.1016/j.crpv.2005.10.006](https://doi.org/10.1016/j.crpv.2005.10.006).
- Castanet J, Croci S, Aujard F, Perret M, Cubo J, De Margerie E. 2004.** Lines of arrested growth in bone and age estimation in a small primate: *Microcebus murinus*. *Journal of Zoology* **263**:31–39 DOI [10.1017/S0952836904004844](https://doi.org/10.1017/S0952836904004844).
- Castanet J, Smirina EM. 1990.** Introduction to the skeletochronological method in amphibians and reptiles. *Annales des Sciences Naturelles, Zoologie* **11**:191–196.
- Chávez-Aponte EO, Alfonzo-Hernández I, Finol HJ, Barrios NCE, Boada-Sucre A, Carrillo-Briceño JD. 2008.** Histología y ultraestructura de los osteodermos fosiles de *Glyptodon clavipes* y *Holmesina* sp. (Xenarthra: Cingulata). *Interciencia* **33**:616–619.

- Chinsamy A, Abdala F. 2008.** Palaeobiological implications of the bone microstructure of South American traversodontids (Therapsida: Cynodontia). *South African Journal of Science* **104**:225–230.
- Chinsamy A, Hurum JH. 2006.** Bone microstructure and growth patterns of early mammals. *Acta Palaeontologica Polonica* **51**:325–338.
- Chinsamy A, Rich T, Vickers-Rich P. 1998.** Polar dinosaur bone histology. *Journal of Vertebrate Paleontology* **18**:385–390 DOI [10.1080/02724634.1998.10011066](https://doi.org/10.1080/02724634.1998.10011066).
- Chinsamy-Turan A. 2005.** *The microstructure of dinosaur bone: deciphering biology with fine scale techniques*. Baltimore: Johns Hopkins University Press.
- Chinsamy-Turan A. 2012a.** Forerunners of mammals: radiation, histology, biology. In: *Life of the past*. Bloomington: Indiana University Press, 352.
- Chinsamy-Turan A. 2012b.** Microstructure of bones and teeth of nonmammalian therapsids. In: Chinsamy-Turan A, ed. *Forerunners of mammals: radiation, histology, biology*. Bloomington: Indiana University Press, 65–88.
- Clément G, Geffard-Kuriyama D. 2010.** Imaging and 3D in palaeontology and palaeoanthropology. *Comptes Rendus Palevol* **9**:259–264 DOI [10.1016/j.crpv.2010.09.001](https://doi.org/10.1016/j.crpv.2010.09.001).
- Cook SF, Brooks ST, Ezra-Cohn HE. 1962.** Histological studies on fossil bone. *Journal of Paleontology* **36**:483–494.
- Cooper LN, Seiffert ER, Clementz M, Madar SI, Bajpai S, Hussain ST, Thewissen JGM. 2014.** Anthracobunids from the middle eocene of India and Pakistan are stem perissodactyls. *PLoS ONE* **9**:e109232 DOI [10.1371/journal.pone.0109232](https://doi.org/10.1371/journal.pone.0109232).
- Cooper LN, Thewissen JGM, Bajpai S, Tiwari BN. 2012.** Postcranial morphology and locomotion of the Eocene raoellid *Indohyus* (Artiodactyla: Mammalia). *Historical Biology* **24**:279–310 DOI [10.1080/08912963.2011.624184](https://doi.org/10.1080/08912963.2011.624184).
- Cormack DH. 1987.** *Ham's histology*. Philadelphia: J.B. Lippincott Company.
- Crowder C, Stout S. 2012.** *Bone histology: an anthropological perspective*. Boca Raton: CRC Press.
- Cubo J, Legendre P, Ricqlès A de, Montes L, Margerie E de, Castanet J, Desdevisse Y. 2008.** Phylogenetic, functional and structural components of variation in bone growth rate in amniots. *Evolution and Development* **10**:217–227 DOI [10.1111/j.1525-142X.2008.00229.x](https://doi.org/10.1111/j.1525-142X.2008.00229.x).
- Cubo J, Ponton F, Laurin M, Margerie E de, Castanet J. 2005.** Phylogenetic signal in bone microstructure of sauropsids. *Systematic Biology* **54**:562–574 DOI [10.1080/10635150591003461](https://doi.org/10.1080/10635150591003461).
- Cuijpers A. 2006.** Histological identification of bone fragments in archaeology: telling humans apart from horses and cattle. *International Journal of Osteoarchaeology* **16**:465–480 DOI [10.1002/oa.848](https://doi.org/10.1002/oa.848).
- Curtin AJ, Macdowell AA, Schaible EG, Roth L. 2012.** Noninvasive histological comparison of bone growth patterns among fossil and extant neonatal elephantids using synchrotron radiation X-ray microtomography. *Journal of Vertebrate Paleontology* **32**:939–955 DOI [10.1080/02724634.2012.672388](https://doi.org/10.1080/02724634.2012.672388).
- Da Costa Pereira PVLG, Victor GD, Porpino KDO, Bergqvist LP. 2012.** Osteoderm histology of Late Pleistocene cingulates from the intertropical region of Brazil. *Acta Palaeontologica Polonica* **59**:543–552 DOI [10.4202/app.2011.0117](https://doi.org/10.4202/app.2011.0117).
- De Boef M, Larsson HCE. 2007.** Bone microstructure: quantifying bone vascular orientation. *Canadian Journal of Zoology* **85**:63–70 DOI [10.1139/z06-195](https://doi.org/10.1139/z06-195).
- Deméré TA. 1994.** Two new species of fossil walruses (Pinnipedia: Odobenidae) from the upper Pliocene San Diego Formation, California. *Proceedings of the San Diego Society of Natural History* **29**:77–98.

- Drusini AZ. 1987.** Refinement of two methods for the histomorphometric determination of age in human bone. *Zeitschrift für Morphologie und Anthropologie* 77:167–176.
- Dumont M, Laurin M, Jacques F, Pellé E, Dabin W, Buffrénil V de. 2013.** Inner architecture of vertebral centra in terrestrial and aquatic mammals: a two-dimensional comparative study. *Journal of Morphology* 274:570–584 DOI 10.1002/jmor.20122.
- Enlow DH. 1962.** A study of the postnatal growth and remodeling of bone. *American Journal of Anatomy* 110:79–101 DOI 10.1002/aja.1001100202.
- Enlow DH, Brown SO. 1958.** A comparative histological study of fossil and recent bone tissues. Part III. *Texas Journal of Science* 10:187–230.
- Erickson GM. 2014.** On dinosaur growth. *Annual Review of Earth and Planetary Sciences* 42:675–697 DOI 10.1146/annurev-earth-060313-054858.
- Erickson GM, Curry Rogers K, Yerby SA. 2001.** Dinosaurian growth patterns and rapid avian growth rates. *Nature* 412:429–433 DOI 10.1038/35086558.
- Erickson GM, Makovicky PJ, Currie PJ, Norell MA, Yerby SA, Brochu CA. 2004.** Gigantism and comparative life-history parameters of tyrannosaurid dinosaurs. *Nature* 430:772–775 DOI 10.1038/nature02699.
- Ezra HC, Cook SF. 1959.** Histology of mammoth bone. *Science* 129:465–466 DOI 10.1126/science.129.3347.465-a.
- Foote JS. 1911a.** The comparative histology of femoral bones. *Transactions of the American Microscopical Society* 30:87–140 DOI 10.2307/3221427.
- Foote JS. 1911b.** Preliminary notice. *Transactions of the American Microscopical Society* 30:326–327 DOI 10.2307/3221427.
- Forasiepi AM, Cerdeño E, Bond M, Schmidt GI, Naipauer M, Straehl FR, Martinelli AG, Garrido AC, Schmitz MD, Crowley JL. 2015.** New toxodontid (Notoungulata) from the Early Miocene of Mendoza, Argentina. *Paläontologische Zeitschrift* 89(3):611–634 DOI 10.1007/s12542-014-0233-5.
- Francillon-Vieillot H, Buffrénil V de, Castanet J, Géraudie J, Meunier FJ, Sire JY, Ricqlès A de. 1990.** Microstructure and mineralization of vertebrate skeletal tissues. In: Carter JG, ed. *Skeletal biomineralization: patterns, processes and evolutionary trends*. New York: Van Nostrand Reinhold, 471–530.
- Frylestam B, Schantz T von. 1977.** Age determination of European hares based on periosteal growth lines. *Mammal Review* 7:151–154 DOI 10.1111/j.1365-2907.1977.tb00367.x.
- Garcia-Martinez R, Marin-Moratalla N, Jordana X, Köhler M. 2011.** The ontogeny of bone growth in two species of dormice: reconstructing life history traits. *Comptes Rendus Palevol* 10:489–498 DOI 10.1016/j.crpv.2011.03.011.
- Geiger M, Wilson LAB, Costeur L, Sánchez R, Sánchez-Villagra MR. 2013.** Diversity and body size in giant caviomorphs (Rodentia) from the Northern Neotropics—study of femoral variation. *Journal of Vertebrate Paleontology* 33:1449–1456 DOI 10.1080/02724634.2013.780952.
- Gray NM, Kainec K, Madar S, Tomko L, Wolfe S. 2007.** Sink or Swim? Bone density as a mechanism for buoyancy control in early cetaceans. *Anatomical Record* 290:638–653 DOI 10.1002/ar.20533.
- Griebeler EM, Klein N, Sander PM. 2013.** Aging, maturation and growth of sauropodomorph dinosaurs as deduced from growth curves using long bone histological data: an assessment of methodological constraints and solutions. *PLoS ONE* 8:e67012 DOI 10.1371/journal.pone.0067012.

- Gross W. 1934.** Die Typen des mikroskopischen Knochenbaues bei fossilen Stegocephalen und Reptilien. *Zeitschrift für Anatomie und Entwicklungsgeschichte* **103**:731–764 DOI [10.1007/BF02118752](https://doi.org/10.1007/BF02118752).
- Habermehl K-H. 1985.** *Altersbestimmung bei Wild- und Pelztieren—Möglichkeiten und Methoden—Ein praktischer Leitfaden für Jäger, Biologen und Tierärzte*. Hamburg, Berlin: Verlag Paul Parey.
- Hayashi S, Houssaye A, Nakajima Y, Chiba K, Ando T, Sawamura H, Inuzuka N, Kaneko N, Osaki T. 2013.** Bone inner structure suggests increasing aquatic adaptations in Desmostylia (Mammalia, Afrotheria). *PLoS ONE* **8**:e59146 DOI [10.1371/journal.pone.0059146](https://doi.org/10.1371/journal.pone.0059146).
- Herdina AN, Herzig-Straschil B, Hilgers H, Metscher BD, Plenck HJ. 2010.** Histomorphology of the penis bone (baculum) in the gray long-eared bat *Pleocotus austriacus* (Chiroptera, Vespertilionidae). *The Anatomical Record* **293**:1248–1258 DOI [10.1002/ar.21148](https://doi.org/10.1002/ar.21148).
- Hill RV. 2006.** Comparative anatomy and histology of xenarthran osteoderms. *Journal of Morphology* **267**:1441–1460 DOI [10.1002/jmor.10490](https://doi.org/10.1002/jmor.10490).
- Hillier ML, Bell LS. 2007.** Differentiating human bone from animal bone: a review of histological methods. *Journal of Forensic Sciences* **52**:249–263 DOI [10.1111/j.1556-4029.2006.00368.x](https://doi.org/10.1111/j.1556-4029.2006.00368.x).
- Hofmann R, Stein K, Sander PM. 2014.** Constraints on the lamina density of laminar bone architecture of large-bodied dinosaurs and mammals. *Acta Palaeontologica Polonica* **59**:287–294 DOI [10.4202/app.2012.0149](https://doi.org/10.4202/app.2012.0149).
- Horner JR, Padian K. 2004.** Age and growth dynamics of *Tyrannosaurus rex*. *Proceedings of the Royal Society of London B* **271**:1875–1880 DOI [10.1098/rspb.2004.2829](https://doi.org/10.1098/rspb.2004.2829).
- Horner JR, Ricqlès A de, Padian K. 1999.** Variation in dinosaur skeletochronology indicators: implications for age assessment and physiology. *Paleobiology* **25**:295–304.
- Horner JR, Ricqlès A de, Padian K. 2000.** Long bone histology of the hadrosaurid dinosaur *Maiasaura peeblesorum*: growth dynamics and physiology based on an ontogenetic series of skeletal elements. *Journal of Vertebrate Paleontology* **20**:115–129 DOI [10.1671/0272-4634\(2000\)020\[0115:LBHOTH\]2.0.CO;2](https://doi.org/10.1671/0272-4634(2000)020[0115:LBHOTH]2.0.CO;2).
- Houssaye APT, Muizon C de, Gingerich PD. 2015.** Transition of Eocene whales from land to sea: evidence from bone microstructure. *PLoS ONE* **10**:e0118409 DOI [10.1371/journal.pone.0118409](https://doi.org/10.1371/journal.pone.0118409).
- Huttenlocker AK, Woodward HN, Hall BK. 2013.** The biology of bone. In: Padian K, Lamm E-T, eds. *Histology of fossil tetrapods—Advancing methods, analysis and interpretation*. Berkeley, Los Angeles, London: University of California Press, 13–34.
- Johnston DH, Beauregard M. 1969.** Rabies epidemiology in Ontario. *Bulletin of the Wildlife Disease Association* **5**:357–370 DOI [10.7589/0090-3558-5.3.357](https://doi.org/10.7589/0090-3558-5.3.357).
- Jordana X, Köhler M. 2011.** Enamel microstructure in the fossil bovid *Myotragus balearicus* (Majorca, Spain): implications for life-history evolution of dwarf mammals in insular ecosystems. *Palaeogeography, Palaeoclimatology, Palaeoecology* **300**:59–66 DOI [10.1016/j.palaeo.2010.12.008](https://doi.org/10.1016/j.palaeo.2010.12.008).
- Jordana X, Marín-Moratalla N, DeMiguel D, Kaiser TM, Köhler M. 2012.** Evidence of correlated evolution of hypsodonty and exceptional longevity in endemic insular mammals. *Proceedings of the Royal Society of London B: Biological Sciences* **279**:3339–3346 DOI [10.1098/rspb.2012.0689](https://doi.org/10.1098/rspb.2012.0689).
- Jordana X, Marín-Moratalla N, Moncunill-Solè B, Nacarino-Meneses C, Köhler M.** Ontogenetic changes in the histological features of zonal bone tissue of ruminants: a quantitative approach. *Comptes Rendus Palevol* In Press.

- Kaiser HE. 1960.** Untersuchungen zur vergleichenden Osteologie der fossilen und rezenten Pachyostosen. *Palaeontographica Abteilung A* **114**:113–196.
- Kerley ER. 1965.** The microscopic determination of age in human bone. *American Journal of Physical Anthropology* **23**:149–163 DOI [10.1002/ajpa.1330230215](https://doi.org/10.1002/ajpa.1330230215).
- Kielan-Jaworowska Z, Cifelli RL, Luo XZ. 2004.** *Mammals from the age of dinosaurs: origins, evolution, and structure*. New York: Columbia University Press.
- King CM. 1991.** A review of age determination methods for the stoat *Mustela erminea*. *Mammal Review* **21**:31–49 DOI [10.1111/j.1365-2907.1991.tb00286.x](https://doi.org/10.1111/j.1365-2907.1991.tb00286.x).
- Kiprijanoff W. 1881.** Studien über die fossilen Reptilien Russlands. I. Theil. Gattung *Ichthyosaurus* König. *Mémoires de l'Académie des Sciences de St-Petersbourg, VIIe Série Tome XXVIII* **8**:1–103.
- Klein N, Sander PM. 2008.** Ontogenetic stages in the long bone histology of sauropod dinosaurs. *Paleobiology* **34**:247–263 DOI [10.1666/0094-8373\(2008\)034\[0247:OSITLB\]2.0.CO;2](https://doi.org/10.1666/0094-8373(2008)034[0247:OSITLB]2.0.CO;2).
- Klevezal GA. 1996.** *Recording structures of mammals. Determination of age and reconstruction of life history*. Rotterdam/Brookfield: A.A. Balkema.
- Klevezal GA, Kleinenberg SE. 1969.** *Age determination of mammals from annual layers in teeth and bones*. Jerusalem: Israel Program of Scientific Translations.
- Köhler M. 2010.** Pérez-Mellado V, Ramon C, eds. *Fast or slow? The evolution of life history traits associated with insular dwarfing*. 261–280.
- Köhler M, Marín-Moratalla N, Jordana X, Aanes R. 2012.** Seasonal bone growth and physiology in endotherms shed light on dinosaur physiology. *Nature* **487**:358–361 DOI [10.1038/nature11264](https://doi.org/10.1038/nature11264).
- Köhler M, Moyà-Solà S. 2009.** Physiological and life history strategies of a fossil large mammal in a resource-limited environment. *Proceedings of the National Academy of Sciences of the United States of America* **106**:20354–20358 DOI [10.1073/pnas.0813385106](https://doi.org/10.1073/pnas.0813385106).
- Kolb C, Scheyer TM, Lister AM, Azorit C, De Vos J, Schlingemann MAJ, Rössner GE, Monaghan NT, Sánchez-Villagra MR. 2015.** Growth in fossil and extant deer and implications for body size and life history evolution. *BMC Evolutionary Biology* **15**:1–15 DOI [10.1186/s12862-015-0295-3](https://doi.org/10.1186/s12862-015-0295-3).
- Kriloff A, Germain D, Canoville A, Vincent P, Sache M, Laurin M. 2008.** Evolution of bone microanatomy of the tetrapod tibia and its use in palaeobiological inference. *Journal of Evolutionary Biology* **21**:807–826 DOI [10.1111/j.1420-9101.2008.01512.x](https://doi.org/10.1111/j.1420-9101.2008.01512.x).
- Krmpotic CM, Ciancio MR, Barbeito CG, Mario RC, Carlini AA. 2009.** Osteoderm morphology in recent and fossil euphractine xenarthrans. *Acta Zoologica* **90**:339–351 DOI [10.1111/j.1463-6395.2008.00359.x](https://doi.org/10.1111/j.1463-6395.2008.00359.x).
- Laurin M. 2004.** The evolution of body size. Cope's rule and the origin of amniotes. *Systematic Biology* **53**:594–622 DOI [10.1080/10635150490445706](https://doi.org/10.1080/10635150490445706).
- Laurin M, Girondot M, Loth M-M. 2004.** The evolution of long bone microanatomy and lifestyle in lissamphibians. *Paleobiology* **30**:589–613 DOI [10.1666/0094-8373\(2004\)030<0589:TEOLBM>2.0.CO;2](https://doi.org/10.1666/0094-8373(2004)030<0589:TEOLBM>2.0.CO;2).
- Lee AH, Huttenlocker AK, Padian K, Woodward HN. 2013.** Analysis of growth rates. In: Padian K, Lamm E-T, eds. *Bone histology of fossil tetrapods*. Berkeley: University of California Press, 217–251.
- Lee AH, Werning S. 2008.** Sexual maturity in growing dinosaurs does not fit reptilian growth models. *Proceedings of the National Academy of Sciences of the United States of America* **105**:582–587 DOI [10.1073/pnas.0708903105](https://doi.org/10.1073/pnas.0708903105).

- Lomolino MV, Sax DF, Palombo MR, Van der Geer AA. 2012.** Of mice and mammoths: evaluations of causal explanations for body size evolution in insular mammals. *Journal of Biogeography* **39**:842–854 DOI [10.1111/j.1365-2699.2011.02656.x](https://doi.org/10.1111/j.1365-2699.2011.02656.x).
- Lomolino MV, Van der Geer AA, Lyras GA, Palombo MR, Sax DF, Rozzi R. 2013.** Of mice and mammoths: generality and antiquity of the island rule. *Journal of Biogeography* **40**:1427–1439 DOI [10.1111/jbi.12096](https://doi.org/10.1111/jbi.12096).
- Luo XZ. 2011.** Developmental patterns in mesozoic evolution of mammal ears. *Annual Review of Ecology, Evolution, and Systematics* **42**:355–380 DOI [10.1146/annurev-ecolsys-032511-142302](https://doi.org/10.1146/annurev-ecolsys-032511-142302).
- Luo ZX, Wible JR. 2005.** A Late Jurassic digging mammal and early mammalian diversification. *Science* **308**:103–107 DOI [10.1126/science.1108875](https://doi.org/10.1126/science.1108875).
- MacArthur RH, Wilson EO. 1967.** *The theory of island biogeography*. Princeton: Princeton University Press.
- Maddison WP, Maddison DR. 2015.** *Mesquite: a modular system for evolutionary analysis*. Version 3.02. Available at <http://mesquiteproject.org>.
- Mahboubi S, Bocherens H, Scheffler M, Benammi M, Jaeger JJ. 2014.** Was the Early Eocene proboscidean *Numidotherium koholense* semi-aquatic or terrestrial? Evidence from stable isotopes and bone histology. *Comptes Rendus Palevol* **13**:501–509 DOI [10.1016/j.crpv.2014.01.002](https://doi.org/10.1016/j.crpv.2014.01.002).
- Marangoni F, Schaefer E, Cajade R, Tejedo M. 2009.** Growth mark formation and chronology of two neotropical anuran species. *Journal of Herpetology* **43**:546–550 DOI [10.1670/08-230R1.1](https://doi.org/10.1670/08-230R1.1).
- Margerie E de, Cubo J, Castanet J. 2002.** Bone typology and growth rate: testing and quantifying ‘Amprino’s rule’ in the mallard (*Anas platyrhynchos*). *Comptes Rendus Biologies* **325**:221–230 DOI [10.1016/S1631-0691\(02\)01429-4](https://doi.org/10.1016/S1631-0691(02)01429-4).
- Marín-Moratalla N, Cubo J, Jordana X, Moncunill-Solè B, Köhler M. 2014.** Correlation of quantitative bone histology data with life history and climate: a phylogenetic approach. *Biological Journal of the Linnean Society* **112**:678–687 DOI [10.1111/bj.12302](https://doi.org/10.1111/bj.12302).
- Marín-Moratalla N, Jordana X, Köhler M. 2013.** Bone histology as an approach to providing data on certain key life history traits in mammals: implications for conservation biology. *Mammalian Biology* **78**:422–429.
- Martinez-Maza C, Alberdi MT, Nieto-Diaz M, Prado JL. 2014.** Life history traits of the Miocene *Hipparion concudense* (Spain) inferred from bone histological structure. *PLoS ONE* **9**:e103708 DOI [10.1371/journal.pone.0103708](https://doi.org/10.1371/journal.pone.0103708).
- Martínez-Maza C, Rosas A, García-Vargas S. 2006.** Bone paleohistology and human evolution. *Journal of Anthropological Sciences* **84**:33–52.
- Martinez-Maza C, Rosas A, Garcia-Vargas S, Estalrrich A, De la Rasilla M. 2011.** Bone remodelling in Neanderthal mandibles from the El Sidron site (Asturias, Spain). *Biology Letters* **7**:593–596 DOI [10.1098/rsbl.2010.1188](https://doi.org/10.1098/rsbl.2010.1188).
- Martiniaková M, Grosskopf B, Vondráková M, Omelka R, Fabiš M. 2005.** Observation of the microstructure of rat cortical bone tissue. *Scripta Medica* **78**:45–50.
- McNab B. 1994.** Resource use and the survival of land and freshwater vertebrates on oceanic islands. *The American Naturalist* **144**:643–660 DOI [10.1086/285698](https://doi.org/10.1086/285698).
- McNab BK. 2002.** Minimizing energy expenditure facilitates vertebrate persistence on oceanic islands. *Ecological Letters* **5**:693–704 DOI [10.1046/j.1461-0248.2002.00365.x](https://doi.org/10.1046/j.1461-0248.2002.00365.x).
- McNab BK. 2010.** Geographic and temporal correlations of mammalian size reconsidered: a resource rule. *Oecologia* **164**:13–23 DOI [10.1007/s00442-010-1621-5](https://doi.org/10.1007/s00442-010-1621-5).

- Meier PS, Bickelmann C, Scheyer TM, Koyabu D, Sánchez-Villagra MR. 2013. Evolution of bone compactness in extant and extinct moles (Talpidae): exploring humeral microstructure in small fossorial mammals. *BMC Evolutionary Biology* 13:55 DOI 10.1186/1471-2148-13-55.
- Meredith RW, Janecka J, Gatesy J, Ryder OA, Fisher CA, Teeling EC, Goodbla A, Eizirik E, Simão TLL, Stadler T, Rabosky DL, Honeycutt RL, Flynn JJ, Ingram CM, Steiner C, Williams TL, Robinson TJ, Burk-Herrick A, Westerman M, Ayoub NA, Springer MS, Murphy WJ. 2011. Impacts of the Cretaceous terrestrial revolution and KPg extinction on mammal diversification. *Science* 334:521–524 DOI 10.1126/science.1211028.
- Mitchell EDJ. 1963. Brachydont desmostylian from Miocene of San Clemente Island, California. *Bulletin of the Southern California Academy of Science* 62:192–201.
- Mitchell EDJ. 1964. Pachyostosis in desmostylids [Abstract 214]. *The Geological Society of America Special Paper* 76.
- Mitchell J, Sander PM. 2014. The three-front model: a developmental explanation of long bone diaphyseal histology of Sauropoda. *Biological Journal of the Linnean Society* 112:765–781 DOI 10.1111/bij.12324.
- Moncunill-Solé B, Jordana X, Marín-Moratalla N, Moyà-Solà S, Köhler M. 2014. How large are the extinct giant insular rodents? New body mass estimations from teeth and bones. *Integrative Zoology* 9:197–212 DOI 10.1111/1749-4877.12063.
- Moncunill-Solé B, Orlandi-Oliverasa G, Jordana X, Rook L, Köhler M. First approach of the life history of *Prolagus apricenicus* (Ochotonidae, Lagomorpha) from Terre Rosse sites (Gargano, Italy) using body mass estimation and paleohistological analysis. *Comptes Rendus Palevol* In Press.
- Montoya GA. 2014. Bone microstructure of the subterranean rodent *Bathyergus suillus* (Rodentia: Bathyergidae). Master's thesis, University of Cape Town, South Africa.
- Morris P. 1970. A method for determining absolute age in the hedgehog. *Journal of Zoology* 161:277–281 DOI 10.1111/j.1469-7998.1970.tb02043.x.
- Musser AM. 2003. Review of the monotreme fossil record and comparison of palaeontological and molecular data. *Comparative Biochemistry and Physiology Part A* 136:927–942 DOI 10.1016/S1095-6433(03)00275-7.
- Musser AM, Archer M. 1998. New information about the skull and dentary of the Miocene *Platypus obdudrodon dicksoni*, and a discussion of ornithorhynchid relationships. *Philosophical Transactions of the Royal Society of London B* 353:1063–1079 DOI 10.1098/rstb.1998.0266.
- Nacarino-Meneses C, Jordana X, Köhler M. First approach to bone histology and skeletochronology of *Equus hemionus*. *Comptes Rendus Palevol* In Press.
- Nakajima Y, Endo H. 2013. Comparative humeral microanatomy of terrestrial, semiaquatic, and aquatic carnivorans using micro-focus CT scans. *Mammal Study* 38:1–8 DOI 10.3106/041.038.0101.
- Nakajima Y, Hirayama R, Endo H. 2014. Turtle humeral microanatomy and its relationship to lifestyle. *Biological Journal of the Linnean Society* 112:719–734 DOI 10.1111/bij.12336.
- Nopcsa F von, Heidsieck E. 1934. Über eine pachyostotische Rippe aus der Kreide Rügens. *Acta Zoologica* 15:431–455 DOI 10.1111/j.1463-6395.1934.tb00661.x.
- O'Leary MA, Bloch JJ, Flynn JJ, Gaudin TJ, Giallombardo A, Giannini NP, Goldberg SL, Kraatz BP, Luo Z-X, Meng J, Ni X, Novacek MJ, Perini FA, Randall ZS, Rougier GW, Sargis EJ, Silcox MT, Simmons NB, Spaulding M, Velazco PM, Weksler M, Wible JR, Cirranello AL. 2013. The placental mammal ancestor and the post-K-Pg radiation of placentals. *Science* 339:662–667 DOI 10.1126/science.1229237.



- O'Leary MA, Kaufman SG. 2012. MorphoBank 3.0: web application for morphological phylogenetics and taxonomy. Available at <http://www.morphobank.org> (accessed 6 May 2015).
- Padian K. 2011. Vertebrate palaeohistology then and now: a retrospective in the light of the contributions of Armand de Ricqlès. *Comptes Rendus Palevol* 10:303–309 DOI 10.1016/j.crpv.2011.02.001.
- Padian K. 2013. Book review: forerunners of mammals: radiation, histology, biology. *Journal of Vertebrate Paleontology* 33:1250–1251 DOI 10.1080/02724634.2013.763814.
- Padian K, Lamm E-T. 2013. *Bone histology of tetrapods*. Berkeley, Los Angeles: University of California Press, 285.
- Pascal M, Castanet J. 1978. Méthodes de la détermination de l'âge chez le chat haret des îles Kerguelen. *Terre et Vie* 32:529–554.
- Pascal M, Delattre P. 1981. Comparaison des différentes méthodes de la détermination de l'âge individuel chez le vison (*Mustela vison* Schreber). *Canadian Journal of Zoology* 59:202–211 DOI 10.1139/z81-034.
- Pascual R, Archer M, Jaureguizar EO, Prado JL, Godthelp H, Hand SJ. 1992. First discovery of monotremes in South America. *Nature* 356:704–706 DOI 10.1038/356704a0.
- Pazzaglia UE, Sibilis V, Congiu T, Pagani F, Ravanelli M, Zarattini G. 2015. Setup of a bone aging experimental model in the rabbit comparing changes in cortical and trabecular bone: morphological and morphometric study in the femur. *Journal of Morphology* 276(7):733–747 DOI 10.1002/jmor.20374.
- Ponton F, Elzanowski A, Castanet J, Chinsamy A, Margerie E de, Ricqlès A de, Cubo J. 2004. Variation of the outer circumferential layer in the limb bones of birds. *Acta Ornithologica* 39:21–24 DOI 10.3161/068.039.0210.
- Prondvai E, Stein K, Osi A, Sander PM. 2012. Life history of *Rhamphorhynchus* inferred from bone histology and the diversity of pterosaurian growth strategies. *PLoS ONE* 7:e31392 DOI 10.1371/journal.pone.0031392.
- Prondvai E, Stein KHW, Ricqlès A de, Cubo J. 2014. Development-based revision of bone tissue classification: the importance of semantics for science. *Biological Journal of the Linnean Society* 112:799–816 DOI 10.1111/bij.12323.
- Quekett JT. 1849a. On the intimate structure of bone as composing the skeleton in the four great classes of animals, viz., mammals, birds, reptiles, and fishes, with some remarks on the great value of the knowledge of such structure in determining the affinities of minute fragments of organic remains. *Transactions of the Microscopical Society of London* 2:46–58 DOI 10.1111/j.1365-2818.1849.tb05102.x.
- Quekett JT. 1849b. Additional observations on the intimate structure of bone. *Transactions of the Microscopical Society of London* 2:59–64 DOI 10.1111/j.1365-2818.1849.tb05103.x.
- Quekett JT. 1855. *Descriptive and illustrated catalogue of the histological series contained in the museum of the Royal College of Surgeons of England. Volume II. Structure of the skeleton of vertebrate animals*. London: Taylor and Francis.
- Raia P, Barbera C, Conte M. 2003. The fast life of a dwarfed giant. *Evolutionary Ecology* 17:293–312 DOI 10.1023/A:1025577414005.
- Ray S, Botha J, Chinsamy A. 2004. Bone histology and growth patterns of some nonmammalian therapsids. *Journal of Vertebrate Paleontology* 24:634–648 DOI 10.1671/0272-4634(2004)024[0634:BHAGPO]2.0.CO;2.
- Ricqlès A de. 1969. Recherches paléohistologiques sur les os longs des tétrapodes. II.- Quelques observations sur la structure des os longs des thériodontes. *Annales de Paléontologie* 55:1–52.

- Ricqlès A de. 1974.** Evolution of endothermy: histological evidence. *Evolutionary Theory* **1**:51–80.
- Ricqlès A de. 1975.** Recherches paléohistologiques sur les os longs des tétrapodes VII. - Sur la classification, la signification fonctionnelle et l'histoire des tissus osseux des tétrapodes. Première partie, structures. *Annales de paléontologie* **61**:51–129.
- Ricqlès A de. 1976a.** On bone histology of fossil and living reptiles, with comments on its functional and evolutionary significance. In: Bellairs A, Cox CB, eds. *Morphology and biology of reptiles*. London and New York: Academic Press, 123–150.
- Ricqlès A de. 1976b.** Recherches paléohistologiques sur les os longs des tétrapodes. VII. - Sur la classification, la signification fonctionnelle et l'histoire des tissus osseux des tétrapodes. Deuxième partie. Fonctions: considérations fonctionnelles et physiologiques. *Annales de Paléontologie* **62**:71–126.
- Ricqlès A de. 2011.** Vertebrate palaeohistology: past and future. *Comptes Rendus Palevol* **10**:509–515 DOI [10.1016/j.crpv.2011.03.013](https://doi.org/10.1016/j.crpv.2011.03.013).
- Ricqlès A de, Buffrénil V de. 1995.** Sur la présence de pachyostéosclerose chez la rhytine de Steller (*Rhytina (Hydrodamalis) gigas*), sirénien rézent éteint. *Annales des Sciences Naturelles, Zoologie, Paris, 13e Série* **16**:47–53.
- Ricqlès A de, Castanet J, Francillon-Vieillot H. 2004.** The “message” of bone tissue in Palaeoherpétology. *Italian Journal of Zoology* **71**(Supplement 2):3–12 DOI [10.1080/11250000409356599](https://doi.org/10.1080/11250000409356599).
- Ricqlès A de, Cubo J. 2010.** Le problème de la causalité complexe aux sources de la relation structuro-fonctionnelle : 1/généralités, 2/l'exemple du tissu osseux. In: Gayon J, Ricqlès AD, eds. *Les Fonctions: des organismes aux artefacts*. Paris: PUF, 179–188.
- Ricqlès A de, Meunier FJ, Castanet J, Francillon-Vieillot H. 1991.** Comparative microstructure of bone. In: Hall BK, ed. *Bone volume 3: bone matrix and bone specific products*. Boca Raton: CRC Press, 1–78.
- Ricqlès A de, Taquet P, Buffrénil V de. 2009.** Rediscovery of Paul Gervais' paleohistological collection. *Geodiversitas* **31**:943–971 DOI [10.5252/g2009n4a943](https://doi.org/10.5252/g2009n4a943).
- Ryan TM, Shaw CN. 2015.** Gracility of the modern *Homo sapiens* skeleton is the result of decreased biomechanical loading. *Proceedings of the National Academy of Sciences of the United States of America* **112**:372–377 DOI [10.1073/pnas.1418646112](https://doi.org/10.1073/pnas.1418646112).
- Sanchez S, Ahlberg P, Trinajstić K, Mirone A, Tafforeau P. 2012.** Three dimensional synchrotron virtual paleohistology: a new insight into the world of fossil bone microstructures. *Microscopy and Microanalysis* **18**:1095–1105 DOI [10.1017/S1431927612001079](https://doi.org/10.1017/S1431927612001079).
- Sander PM, Andrassy P. 2006.** Lines of arrested growth and long bone histology in Pleistocene large mammals from Germany: what do they tell us about dinosaur physiology? *Palaeontographica Abteilung A* **277**:143–159.
- Sander PM, Klein N, Buffetaut E, Cuny G, Suteethorn V, Le Loeuff J. 2004.** Adaptive radiation in sauropod dinosaurs: bone histology indicates rapid evolution of giant body size through acceleration. *Organisms, Diversity & Evolution* **4**:165–173 DOI [10.1016/j.ode.2003.12.002](https://doi.org/10.1016/j.ode.2003.12.002).
- Sander PM, Tückmantel C. 2003.** Bone lamina thickness, bone apposition rates, and age estimates in sauropod humeri and femora. *Paläontologische Zeitschrift* **77**:161–172 DOI [10.1007/BF03004566](https://doi.org/10.1007/BF03004566).
- Schaffer J. 1890.** Über den feineren Bau fossiler Knochen. In: *Sitzungsberichte der Kaiserlichen Akademie der Wissenschaften, Mathematisch-Naturwissenschaftliche Classe* XCVIII. Band. Hefte I bis X. Abtheilung III. 319–382.
- Scheyer TM. 2009–2015.** Palaeohistology. In: Sánchez-Villagra MR, ed. *Developmental—palaeontology net*. Zurich: Palaeontological Institute of the University of Zurich. Available at <http://www.developmental-palaeontology.net/palaeohistology/index.php> (accessed 1 June 2015).

- Scheyer TM, Klein N, Sander PM. 2010.** Developmental palaeontology of Reptilia as revealed by histological studies. *Seminars in Cell & Developmental Biology* **21**:462–470 DOI [10.1016/j.semcdb.2009.11.005](https://doi.org/10.1016/j.semcdb.2009.11.005).
- Schultz M. 1997.** Microscopic investigation of excavated skeletal remains: a contribution to paleopathology and forensic medicine. In: Haglund WD, Sorg MH, eds. *Forensic taphonomy The postmortem fate of human remains*. Boca Raton/New York/London/Tokyo: CRC Press, 201–222.
- Schultz M, Schmidt-Schultz TH. 2014.** Microscopic research on fossil human bone. In: Henke W, Tattersall I, eds. *Handbook of paleoanthropology*. 2nd edition. Heidelberg/New York: Springer, 983–998.
- Singh IJ, Tonna EA, Gandel CP. 1974.** A comparative histological study of mammalian bone. *Journal of Morphology* **144**:421–438 DOI [10.1002/jmor.1051440404](https://doi.org/10.1002/jmor.1051440404).
- Skinner MM, Stephens NB, Tsegai ZJ, Foote AC, Nguyen NH, Gross T, Pahr DH, Hublin J-J, Kivell TL. 2015.** Human-like hand use in *Australopithecus africanus*. *Science* **347**:395–399 DOI [10.1126/science.1261735](https://doi.org/10.1126/science.1261735).
- Stearns SC. 1992.** *The evolution of life histories*. Oxford: Oxford University Press.
- Stein K, Prondvai E. 2014.** Rethinking the nature of fibrolamellar bone: an integrative biological revision of sauropod plexiform bone formation. *Biological Reviews* **89**(1):24–47 DOI [10.1111/brv.12041](https://doi.org/10.1111/brv.12041).
- Stein K, Sander M. 2009.** Histological core drilling: a less destructive method for studying bone histology. In: *First annual fossil preparation and collections symposium*. Petrified Forest: Petrified Forest National Park, 69–80.
- Straehl FR, Scheyer TM, Forasiepi AM, MacPhee RD, Sánchez-Villagra MR. 2013.** Evolutionary patterns of bone histology and bone compactness in xenarthran mammal long bones. *PLoS ONE* **8**:e69275 DOI [10.1371/journal.pone.0069275](https://doi.org/10.1371/journal.pone.0069275).
- Tacutu R, Craig T, Budovsky A, Wuttke D, Lehmann G, Taranukha D, Costa J, Fraifeld VE, De Magalhaes JP. 2013.** Human ageing genomic resources: integrated databases and tools for the biology and genetics of ageing. *Nucleic Acids Research* **41**:D1027–D1033 DOI [10.1093/nar/gks1155](https://doi.org/10.1093/nar/gks1155).
- Thewissen JGM, Cooper LN, Clementz MT, Bajpai S, Tiwari BN. 2007.** Whales originated from aquatic artiodactyls in the Eocene epoch of India. *Nature* **450**:1190–1194 DOI [10.1038/nature06343](https://doi.org/10.1038/nature06343).
- Tomassini RL, Montalvo CI, Manera T, Visconti G. 2014.** Mineralogy, geochemistry, and paleohistology of Pliocene mammals from the Monte Hermoso Formation (Argentina). *Paedotherium bonaerense* (Notoungulata, Hegetotheriidae) as a case study. *Ameghiniana* **51**:385–395 DOI [10.5710/AMGH.01.07.2014.2737](https://doi.org/10.5710/AMGH.01.07.2014.2737).
- Van der Geer A, Lyras G, De Vos J, Dermitzakis M. 2010.** *Evolution of island mammals. Adaptation and extinction of placental mammals on islands*. Sussex: Wiley-Blackwell.
- Vanderhoof VL. 1937.** A study of the Miocene sirenian *Desmostylus*. *University of California Publications in the Geological Sciences* **24**:169–262.
- Vickaryous MK, Hall BK. 2006.** Osteoderm morphology and development in the nine-banded armadillo, *Dasyus novemcinctus* (Mammalia, Xenarthra, Cingulata). *Journal of Morphology* **267**:1273–1283 DOI [10.1002/jmor.10475](https://doi.org/10.1002/jmor.10475).
- Vickaryous MK, Sire JY. 2009.** The integumentary skeleton of tetrapods: origin, evolution, and development. *Journal of Anatomy* **214**:441–464 DOI [10.1111/j.1469-7580.2008.01043.x](https://doi.org/10.1111/j.1469-7580.2008.01043.x).
- Warren JW. 1963.** Growth zones in the skeleton of recent and fossil vertebrates. PhD, University of California.

- Wolf D. 2007.** Osteoderm histology of extinct and recent Cingulata and Phyllophaga (Xenarthra, Mammalia): implications for systematics and biomechanical adaptation. *Hallesches Jahrbuch für Geowissenschaften Beiheft* **23**:145–151.
- Wolf D. 2008.** Osteoderm histology of the Cingulata (Xenarthra, Mammalia): implications for systematics [Abstract 161A]. *Journal of Vertebrate Paleontology* **28**.
- Wolf D, Kalthoff DC, Martin Sander PM. 2012.** Osteoderm histology of the Pamphathiidae (Cingulata, Xenarthra, Mammalia): implications for systematics, osteoderm growth, and biomechanical adaptation. *Journal of Morphology* **273**:388–404 DOI [10.1002/jmor.11029](https://doi.org/10.1002/jmor.11029).
- Woodward HN, Padian K, Lee AH. 2013.** Skeletochronology. In: Padian K, Lamm E-T, eds. *Histology of fossil tetrapods—advancing methods, analysis and interpretation*. Berkeley, Los Angeles, London: University of California Press, 195–215.
- Zedda M, Lepore G, Manca P, Chisu V, Farina V. 2008.** Comparative bone histology of adult horses and cows. *Journal of Veterinary Medicine Series C* **37**:442–445.
- Zylberberg L, Traub W, Buffrénil V de, Allizard F, Arad T, Weiner S. 1998.** Rostrum of a toothed whale: ultrastructural study of a very dense bone. *Bone* **23**:241–247 DOI [10.1016/S8756-3282\(98\)00101-X](https://doi.org/10.1016/S8756-3282(98)00101-X).