



Corrigendum: Distinct Immune Response at 1 Year Post-COVID-19 According to Disease Severity

Chang Kyung Kang^{1†}, Minji Kim^{2,3,4†}, Jisu Hong^{2,4,5†}, Gwanghun Kim^{2,3,4}, Soojin Lee^{2,3,4}, Euijin Chang¹, Pyoeng Gyun Choe¹, Nam Joong Kim¹, Ik Soo Kim⁶, Jun-Young Seo^{7,8}, Daesub Song⁹, Dong-Sup Lee^{2,3,4,10,11}, Hyun Mu Shin^{2,4,11}, Yong-Woo Kim¹¹, Chang-Han Lee^{2,4,5,11*‡}, Wan Beom Park^{1*‡}, Hang-Rae Kim^{2,3,4,10,11*‡} and Myoung-don Oh¹

OPEN ACCESS

Edited and reviewed by:

Michael Vajdy,
EpitoGenesis, United States

*Correspondence:

Hang-Rae Kim
hangrae2@snu.ac.kr
Wan Beom Park
wbpark1@snu.ac.kr
Chang-Han Lee
chlee-antibody@snu.ac.kr

[†]These authors have contributed
equally to this work

[‡]These authors have contributed
equally to this work and share
senior authorship

Specialty section:

This article was submitted to
Immunological Memory,
a section of the journal
Frontiers in Immunology

Received: 27 April 2022

Accepted: 02 May 2022

Published: 24 May 2022

Citation:

Kang CK, Kim M, Hong J, Kim G,
Lee S, Chang E, Choe PG, Kim NJ,
Kim IS, Seo J-Y, Song D, Lee D-S,
Shin HM, Kim Y-W, Lee C-H,
Park WB, Kim H-R and
Oh M-d (2022) Corrigendum:
Distinct Immune Response
at 1 Year Post-COVID-19
According to Disease Severity.
Front. Immunol. 13:929770.
doi: 10.3389/fimmu.2022.929770

¹ Department of Internal Medicine, Seoul National University College of Medicine, Seoul, South Korea, ² Department of Biomedical Sciences, Seoul National University College of Medicine, Seoul, South Korea, ³ Department of Anatomy & Cell Biology, Seoul National University College of Medicine, Seoul, South Korea, ⁴ BrainKorea21 (BK21) FOUR Biomedical Science Project, Seoul National University College of Medicine, Seoul, South Korea, ⁵ Department of Pharmacology, Seoul National University College of Medicine, Seoul, South Korea, ⁶ Department of Microbiology, School of Medicine, Gachon University, Incheon, South Korea, ⁷ Severance Biomedical Science Institute, Yonsei University College of Medicine, Seoul, South Korea, ⁸ BrainKorea21 (BK21) Project for Medical Science, Yonsei University College of Medicine, Seoul, South Korea, ⁹ College of Pharmacy, Korea University, Sejong, South Korea, ¹⁰ Medical Research Institute, Seoul National University College of Medicine, Seoul, South Korea, ¹¹ Wide River Institute of Immunology, Seoul National University, Hongcheon, South Korea

Keywords: SARS-CoV-2, antibody, phagocytosis, memory B cells, memory T cells

A Corrigendum on:

Distinct Immune Response at 1 Year Post-COVID-19 According to Disease Severity.

By Kang CK, Kim M, Hong J, Kim G, Lee S, Chang E, Choe PG, Kim NJ, Kim IS, Seo J-Y, Song D, Lee D-S, Shin HM, Kim Y-W, Lee C-H, Park WB, Kim H-R and Oh M-d (2022) *Front. Immunol.* 13:830433. doi: 10.3389/fimmu.2022.830433

In the original article, there was a mistake in **Figure 3** as published. **Figure 3D** was repeatedly used instead of **Figure 3F** while reformatting the **Figure 3** plots during the revision process. The corrected **Figure 3** appears below.

The authors apologize for this error and state that this does not change the scientific conclusions of the article in any way. The original article has been updated.

Publisher's Note: All claims expressed in this article are solely those of the authors and do not necessarily represent those of their affiliated organizations, or those of the publisher, the editors and the reviewers. Any product that may be evaluated in this article, or claim that may be made by its manufacturer, is not guaranteed or endorsed by the publisher.

Copyright © 2022 Kang, Kim, Hong, Kim, Lee, Chang, Choe, Kim, Kim, Seo, Song, Lee, Shin, Kim, Lee, Park, Kim and Oh. This is an open-access article distributed under the terms of the Creative Commons Attribution License (CC BY). The use, distribution or reproduction in other forums is permitted, provided the original author(s) and the copyright owner(s) are credited and that the original publication in this journal is cited, in accordance with accepted academic practice. No use, distribution or reproduction is permitted which does not comply with these terms.

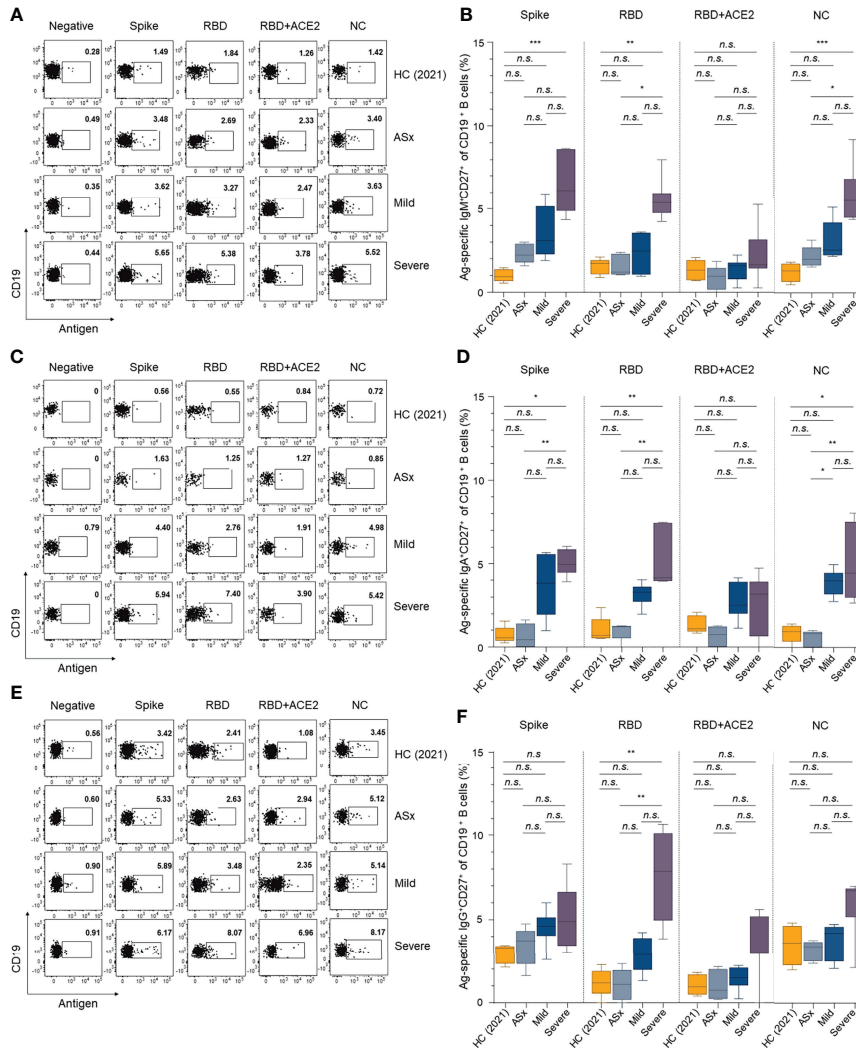


FIGURE 3 | Memory B-cell responses against SARS-CoV-2 according to the severity of illness. **(A, C, E)** Representative gating strategy for IgM+, IgA+, and IgG+ antigen-specific memory (CD27+ CD19+) B cells. **(B, D, F)** Frequencies of IgM+, IgA+, and IgG+ antigen-specific memory B cells according to the severity of illness and different antigens. Statistical analysis was performed using the Kruskal–Wallis rank-sum test with Dunn’s post hoc test in GraphPad Prism (n.s.: $P > 0.05$, * $P < 0.05$, ** $P < 0.01$, *** $P < 0.001$).