

CORRECTION

Open Access



Correction to: Upregulation of IL-15 in the placenta alters trophoblasts behavior contributing to gestational diabetes mellitus

Jiaqi Li[†], Yuan Li[†], Xuan Zhou, Lijie Wei, Jingyi Zhang, Shenglan Zhu, Huiting Zhang, Xuan Gao, Lali Mwamaka Sharifu, Shaoshuai Wang, Ling Xi and Ling Feng*

Correction to: Li et al. *Cell Biosci* (2021) 11:33

<https://doi.org/10.1186/s13578-021-00533-4>

In this article, there was a mistake in the Western blot photographs of p-JAK1 and p-JAK2 of JAR. The correct version of Figure 6 is given in this erratum (Fig. 6).

All the changes requested are implemented in this correction and the original article [1] has been corrected.

The original article can be found online at <https://doi.org/10.1186/s13578-021-00533-4>.

*Correspondence: fltj007@163.com

[†]Jiaqi Li and Yuan Li contribute equally to the paper
National Clinical Research Center of Gynecology and Obstetrics, Tongji Hospital, Tongji Medical College, Huazhong University of Science and Technology, 1095 Jiefang Anv, Wuhan 430030, Hubei, China



© The Author(s) 2021. **Open Access** This article is licensed under a Creative Commons Attribution 4.0 International License, which permits use, sharing, adaptation, distribution and reproduction in any medium or format, as long as you give appropriate credit to the original author(s) and the source, provide a link to the Creative Commons licence, and indicate if changes were made. The images or other third party material in this article are included in the article's Creative Commons licence, unless indicated otherwise in a credit line to the material. If material is not included in the article's Creative Commons licence and your intended use is not permitted by statutory regulation or exceeds the permitted use, you will need to obtain permission directly from the copyright holder. To view a copy of this licence, visit <http://creativecommons.org/licenses/by/4.0/>. The Creative Commons Public Domain Dedication waiver (<http://creativecommons.org/publicdomain/zero/1.0/>) applies to the data made available in this article, unless otherwise stated in a credit line to the data.

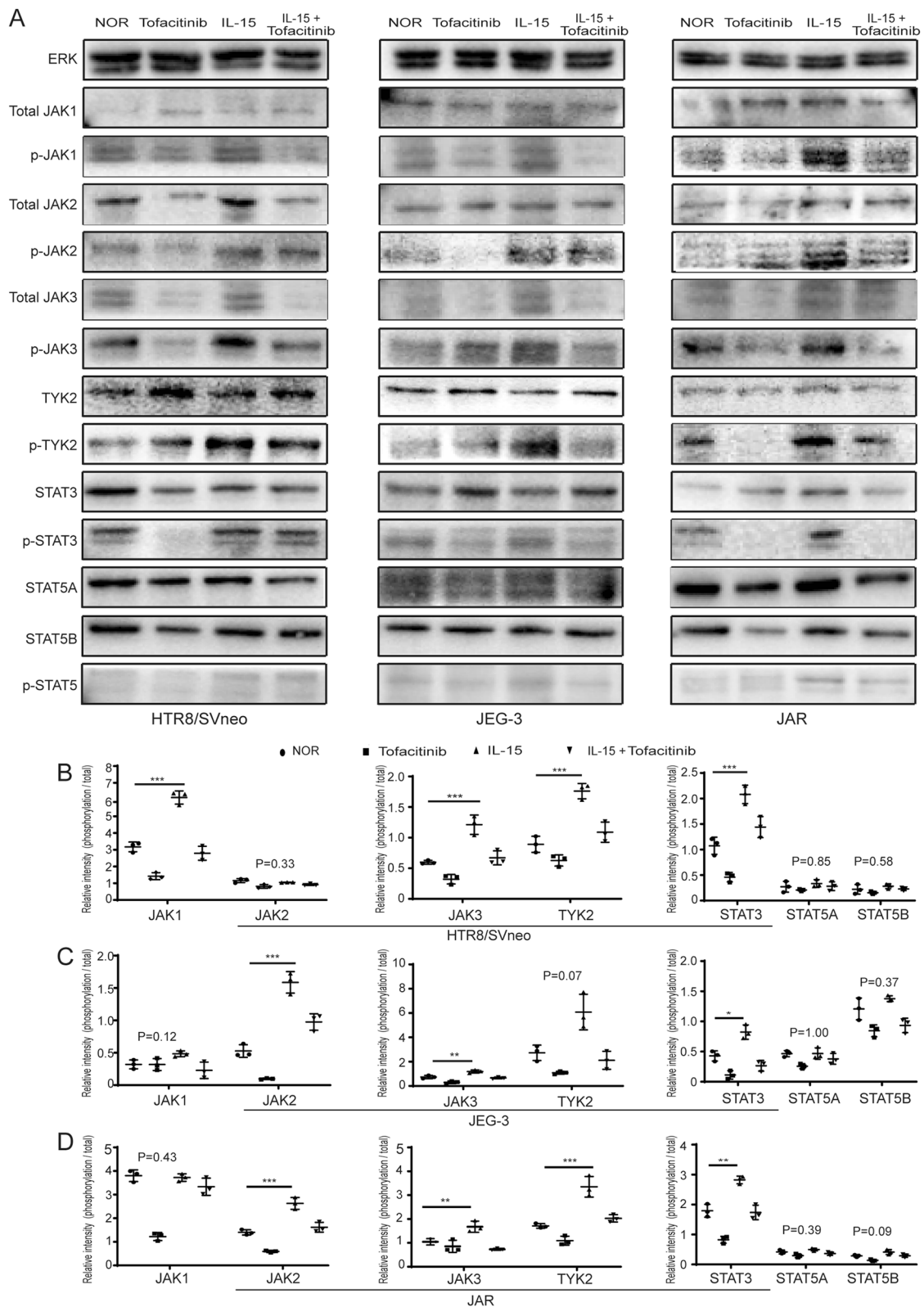


Fig. 6 IL-15 activated the JAK/STAT signaling pathway in trophoblasts in vitro. **a** Representative of western blot showed the expression of proteins associated with JAK/STAT signaling pathways in different groups of HTR8/SVneo, JEG-3 and JAR. **b-d** The relative expression of phosphorylation/total protein in JAK/STAT signaling pathways in different groups of HTR8/SVneo, JEG-3 and JAR. *P < 0.05, **P < 0.01, ***P < 0.001

Accepted: 19 November 2021

Published online: 13 December 2021

behavior contributing to gestational diabetes mellitus. *Cell Biosci.* 2021;11:33. <https://doi.org/10.1186/s13578-021-00533-4>.

Reference

1. Li J, Li Y, Zhou X, Wei L, Zhang J, Zhu S, Zhang H, Gao X, Sharifu LM, Wang S, Xi L, Feng L. Upregulation of IL-15 in the placenta alters trophoblasts

Publisher's Note

Springer Nature remains neutral with regard to jurisdictional claims in published maps and institutional affiliations.