

Review

Open Access

## Is plasma vitamin C an appropriate biomarker of vitamin C intake? A systematic review and meta-analysis

Mahshid Dehghan<sup>\*1</sup>, Noori Akhtar-Danesh<sup>2,3</sup>, Catherine R McMillan<sup>4</sup> and Lehana Thabane<sup>3,5</sup>

Address: <sup>1</sup>Population Health Research Institute, School of Medicine, McMaster University, Hamilton, Canada, <sup>2</sup>School of Nursing, McMaster University, Hamilton, Canada, <sup>3</sup>Department of Clinical Epidemiology and Biostatistics, McMaster University, Hamilton, Canada, <sup>4</sup>Division of Plastic Surgery, Sunnybrook Health Sciences Centre, Toronto, Canada and <sup>5</sup>Centre for Evaluation of Medicines, St. Joseph's Healthcare, Hamilton, Canada

Email: Mahshid Dehghan\* - mahshid@ccc.mcmaster.ca; Noori Akhtar-Danesh - daneshn@mcmaster.ca; Catherine R McMillan - Catherine.McMillan@sunnybrook.ca; Lehana Thabane - ThabanL@mcmaster.ca

\* Corresponding author

Published: 13 November 2007

Received: 8 June 2007

*Nutrition Journal* 2007, **6**:41 doi:10.1186/1475-2891-6-41

Accepted: 13 November 2007

This article is available from: <http://www.nutritionj.com/content/6/1/41>

© 2007 Dehghan et al; licensee BioMed Central Ltd.

This is an Open Access article distributed under the terms of the Creative Commons Attribution License (<http://creativecommons.org/licenses/by/2.0>), which permits unrestricted use, distribution, and reproduction in any medium, provided the original work is properly cited.

### Abstract

**Background:** As the primary source of dietary vitamin C is fruit and to some extent vegetables, the plasma level of vitamin C has been considered a good surrogate or predictor of vitamin C intake by fruit and vegetable consumption. The purpose of this systematic review was to investigate the relationship between dietary vitamin C intakes measured by different dietary methods and plasma levels of vitamin C.

**Method:** We searched the literature up to May 2006 through the OVID interface: MEDLINE (from 1960) and EMBASE (from 1988). We also reviewed the reference lists in the articles, reviews, and textbooks retrieved. A total of 26 studies were selected and their results were combined using meta-analytic techniques with random-effect model approach.

**Results:** The overall result of this study showed a positive correlation coefficient between Food Frequency Questionnaire (FFQ) and biomarker ( $r = 0.35$  for "both" genders,  $0.39$  for females, and  $0.46$  for males). Also the correlation between Dietary Recalls (DR)/diary and biomarker was  $0.46$  for "both" genders,  $0.44$  for females, and  $0.36$  for males. An overall correlation of  $0.39$  was found when using the weight record method. Adjusting for energy intake improved the observed correlation for FFQ from  $0.31$  to  $0.41$ . In addition, we compared the correlation for smokers and non-smokers for both genders (FFQ: for non-smoker  $r = 0.45$ , adjusted for smoking  $r = 0.33$ ).

**Conclusion:** Our findings show that FFQ and DR/diary have a moderate relationship with plasma vitamin C. The correlation may be affected/influenced by the presence of external factors such as vitamin bioavailability, absorption condition, stress and food processing and storage time, or by error in reporting vitamin C intake.

### Background

In recent years, a great deal of attention has been given to

fruit and vegetable consumption and their role in reducing rates of chronic diseases such as cancer, coronary heart

disease (CHD), stroke, diabetes, and arthritis [1-3]. It is suggested that the protective effect of fruits and vegetables is partly due to antioxidant nutrients such as vitamin C and carotenoids which inhibit lipid per-oxidation and oxidative cell damage [4]. However, there is still disagreement on the beneficial effects of ascorbic acid. A large epidemiological study from Finland has found an association between vitamin C intake and reduced risk of death from CHD in women only [5]. Pooled results of 9 cohorts showed reduced incidence of major CHD with high supplemented intake of vitamin C (>700 mg vitamin C/day) [6], with a similar result observed from another study from the UK [7]. On the other hand, the Health Professionals Follow-up Study [8] and the Nurses Health Study [9] did not show significant associations between vitamin C intake and risk of CHD. In a meta-analysis Ness et al. (1999) did not find any significant benefit of vitamin C as a preventive factor for CHD [10].

Vitamin C intake is mainly measured by two different methods: by dietary assessment methods including Food Frequency Questionnaires (FFQ), Diet History Questionnaires (DHQ), 24 hr Dietary Recalls (DR) [11-13], Weight Records (WR), or plasma/serum vitamin C. However, some validation studies used the plasma level of vitamin C as surrogate of vitamin C intake [14,15]. FFQ is one of the most commonly used tools in epidemiologic studies to assess long-term nutritional exposure. It is used to determine usual intakes of selected items from all major food groups. The 24 hr DR and WR are based on recent food intake over a defined period of time with a suitable number of DRs or WRs measured throughout a year, these measurements are considered as an estimation of usual intake [16]. Weight records are widely considered to be the gold standard for dietary intake; however, this method is not feasible in large epidemiological studies. FFQ, documents participants' food intake over the previous year which may result in significant memory error, whereas methods such as DR instruct participants to record the previous day's food consumption and therefore is less prone to memory errors.

As fruits, and to some extent vegetables, are the primary source of dietary vitamin C, the plasma level of vitamin C has been considered a good surrogate or predictor of vitamin C intake by fruit and vegetable consumption. Therefore, significant changes of plasma vitamin C are expected by altering fruit and vegetable consumption. In this meta-analysis, we assessed the association between vitamin C intake measured by dietary assessment methods and plasma level of vitamin C in epidemiological studies. The purposes of this meta-analysis were firstly, to investigate the relationship between dietary vitamin C intakes measured by several different dietary methods and plasma level of vitamin C, secondly, to explore whether the correlation

between dietary vitamin C intake and plasma vitamin C varies between different dietary assessment methods.

## Methods

This study was conducted and reported according to the guidelines of meta-analysis of observational studies in epidemiology [17]. We searched the literature up to May 2006 through the OVID interface: MEDLINE (from 1960) and EMBASE (from 1988). We also reviewed the reference lists in the articles, reviews and textbooks retrieved. The search words included: food frequency questionnaire, validation, 24 hour dietary recall, food weight recall, food diaries, vitamin C, ascorbic acid, plasma vitamin C and biomarker. Medical subject heading (MESH) equivalents of the terms were also used. Two independent reviewers (MD and CM) ran the electronic searches and entered the data into Reference Manager 10, removing all duplicates.

Reviewers screened all titles and abstracts for studies that might meet the following inclusion/exclusion criteria:

### Inclusion criteria

This meta-analysis includes cross-sectional or validation studies which published in English language journals and reported either Pearson or Spearman correlations between vitamin C intake measured by dietary assessment methods and plasma level of vitamin C. The Pearson correlation coefficient ( $r$ ) is a measure of the strength of linear association between two approximately normally distributed continuous variables, while the Spearman's correlation coefficient ( $\rho$ ) is a rank-based measure of linear association between two continuous variables where at least one of them is not normally distributed [18].

### Exclusion criteria

Studies were excluded if the dietary intake was not measured quantitatively or if the correlation between dietary intake and serum levels was not reported. We also excluded randomized controlled studies, as the dosages of vitamin C intake were far greater than usual dietary intake. From case-control studies, healthy individuals participated in the control group were included and were also excluded. cases were excluded. Studies published only as abstracts were also excluded.

Studies were also excluded if the age of participants was not between 18–65 years or the participants were pregnant or lactating women, were obese or extra-obese, had a history of diabetes or intestinal digestive disorders, had a diagnosed tumor or were taking anticonvulsants, anticoagulants or a broad spectrum of antibiotics, lipid lowering medications or systemic steroids.

### Outcomes

From each study we extracted the correlation between vitamin C intake and level of plasma vitamin C. Hard copies of potential studies were retrieved and the same two independent reviewers met to reach consensus on the studies to be included. When in doubt, the study authors were contacted; if this was not possible, a third reviewer (NAD) was consulted. Methodological quality was assessed by the same two independent reviewers (unmasked to authors, journals or results). In cases of disagreement, a third reviewer was consulted. We scored the studies using the instrument developed by Dennis et al. [19]. A higher score was assigned to a study if a) the FFQ in the study had a higher number of food items, with an emphasis on fruits and vegetables, b) dietary data was collected by interview-administration, c) the method of conversion of foods to nutrients was defined and the type of nutritional software and food composition tables used in a study was stated, d) more than one dietary assessment tool was used in addition to biomarker measurement, e) the inclusion and exclusion criteria plus the number of excluded participants and the reasons for exclusion were clearly stated, or f) the laboratory assay used to analyze biomarker levels was appropriate and described (e.g. HPLC or colorimetric).

Our main outcome was the correlation coefficient between biomarker and measured dietary vitamin C by different dietary assessment tools; therefore, we assigned more points for studies that a) reported correlations between dietary methods and biomarker for each gender separately and for both genders, b) reported correlations for supplement users and non-supplement users separately, and c) adjusted correlations for energy. Finally, we scored studies based on whether or not quality control was reported. Assessment of study quality was completed using the trial validity assessment sheet. We assessed agreement between reviewers using Cohen's kappa statistics ( $\kappa$ ) for categorical variables as poor if  $\kappa \leq 0.2$ ; fair if  $0.21 \leq \kappa \leq 0.4$ ; moderate if  $0.41 \leq \kappa \leq 0.6$ ; substantial if  $0.61 \leq \kappa \leq 0.8$ ; and good if  $\kappa \geq 0.8$  [20]. We also used the intra-class correlation coefficient (ICC) to measure the degree of agreement between reviewers for continuous outcomes [21].

Statistical heterogeneity was tested using a chi-square test [22] at  $\alpha = 0.10$  and reported with the  $I^2$  statistic (in which higher values indicate higher heterogeneity). All meta-analyses were carried out using the DerSimonian and Laird [23] random effects model. Subgroup analyses were carried out for each gender based on type of vitamin C measurements (crude, energy adjusted, and supplements excluded: decided a priori). If vitamin C intake was not reported for males and females separately we used "both" as a category to differentiate them from "male"

and "female" categories. The statistical package of STATA SE/8 with the "metan" command was used for meta-analysis [24].

### Meta-analysis procedure

We retrieved all effect sizes in the form of Pearson or Spearman correlation coefficients. Following the recommendation by Hunter and Schmidt [25], we did not transform the correlation coefficient into Fisher's z scores as this transformation produces an upward bias in the mean estimation of the correlation coefficients because of the larger weights given to the larger correlations. On the other hand, this upward bias is usually higher than the negligible downward bias produced by untransformed correlations.

### Results

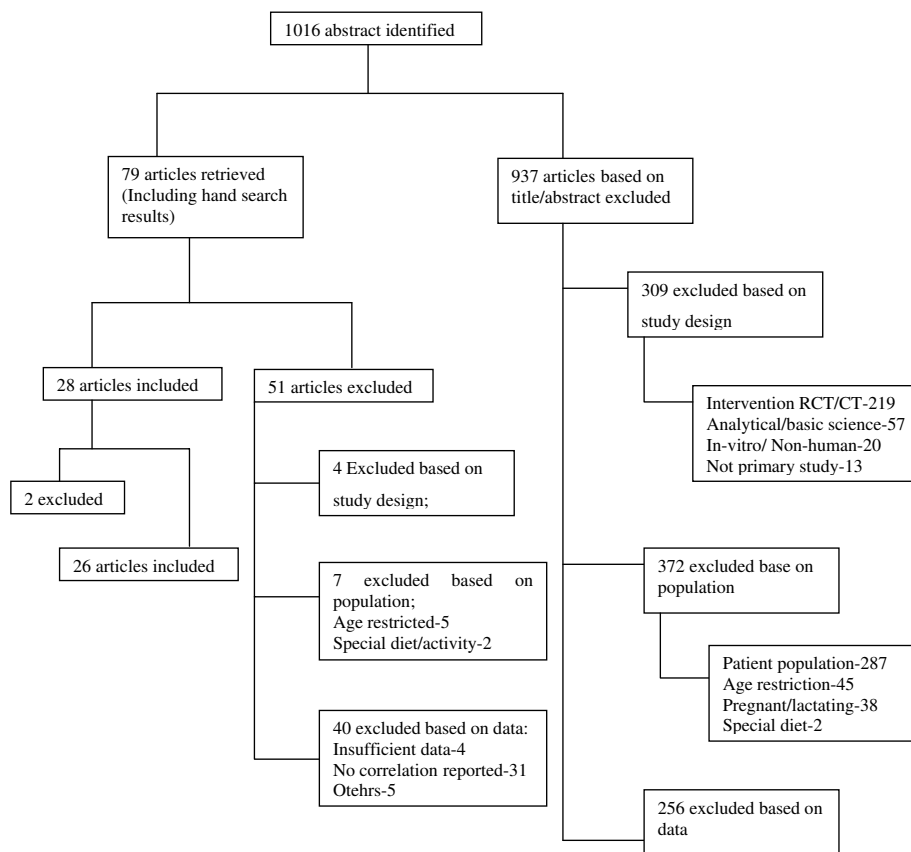
The MEDLINE search identified 1016 articles of which 79 articles were potentially relevant. Finally, we chose 26 articles (see Additional file 1) that reported correlation coefficients between plasma levels of vitamin C and dietary intake (see Figure 1). EMBASE provided no more additional studies. One study that reported a negative correlation between dietary intake and plasma level of vitamin C was excluded [26]: a negative relationship between vitamin C intake and plasma vitamin C is biologically implausible. Another study was excluded because of small sample size ( $n = 5$ ) [27].

### Study characteristics

This analysis included 26 studies with a total of 26631 participants: 18740 participants with DR and diary methods, 6774 with FFQ and 1117 individuals with WR. There were high inter-reviewer agreements between reviewers for inclusion/exclusion criteria and main outcomes: the minimum level of kappa statistics for inclusion/exclusion criteria was 0.86 for FFQ, 0.85 for DR, and 1.0 for WR and the ICC, and 1.0 for main outcome for all methods of FFQ, DR, and WR.

### Correlation between FFQ and biomarker assessments

We found 18 studies with 47 correlation coefficients between FFQ and the biomarker. Some studies reported more than one correlation coefficient for different genders, time-points, or adjusted and unadjusted correlation coefficients based on energy intake, supplement use, and other factors. Twenty correlation coefficients out of these 47 were reported for "both" genders together not for males and females separately. Some studies reported Pearson and some Spearman correlation coefficients. The overall meta-analysis for these 20 correlations resulted in a positive correlation coefficient between FFQ and biomarker ( $r = 0.35$ ; 95%CI: 0.29, 0.40, see Figure 2). This analysis also indicated heterogeneity among correlation coefficients across studies ( $\chi^2 = 34.02$ ,  $df = 19$ ,  $p = 0.018$ ).



**Figure 1**  
Flowchart for study selection.

The subgroup meta-analysis for "both" genders showed that correlation coefficients for *crude* assessment of vitamin C in FFQs were heterogeneous ( $\chi^2 = 24.28$ ,  $df = 12$ ,  $p = 0.019$ ); but the correlation coefficients within the two other sub-groups of *energy adjusted* and *supplement excluded* were homogenous (see Figure 2). The higher correlations are seen among studies that reported *energy adjusted* correlations for vitamin C ( $r = 0.41$ ).

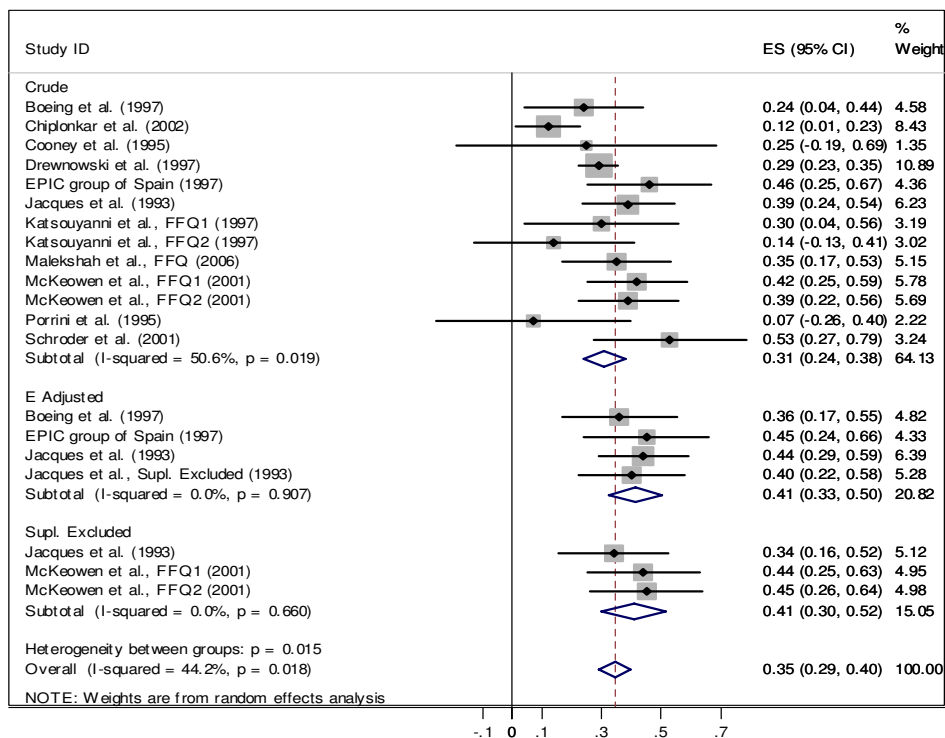
In the next stage, we carried out the same analysis for each gender separately. The results are presented in Figure 3 and Figure 4. The overall estimated correlation coefficient is 0.46 (CI95%: 0.40, 0.52) for males and 0.39 (CI95%: 0.30, 0.48) for females. The higher correlation coefficients are observed within the *energy-adjusted* group ( $r = 0.60$  female,  $r = 0.58$  for male). In addition, the correlation coefficients are not homogenous within the *crude* group. For females there is no heterogeneity among subgroups ( $\chi^2 = 4.43$ ,  $df = 2$ ,  $p = 0.109$ ), but subgroups are heterogeneous for males ( $\chi^2 = 11.90$ ,  $df = 2$ ,  $p = 0.003$ ). We also evaluated the effect of smoking by comparing correlations between smokers and non-smokers. For non-smokers, the

correlation coefficient was 0.39 (CI 95%: 0.26, 0.53) and studies which adjusted for smoking found  $r = 0.33$  (CI 95%: 0.23, 0.42). We have found only one study [28] that reported a correlation ( $r = 0.45$ ) for smokers.

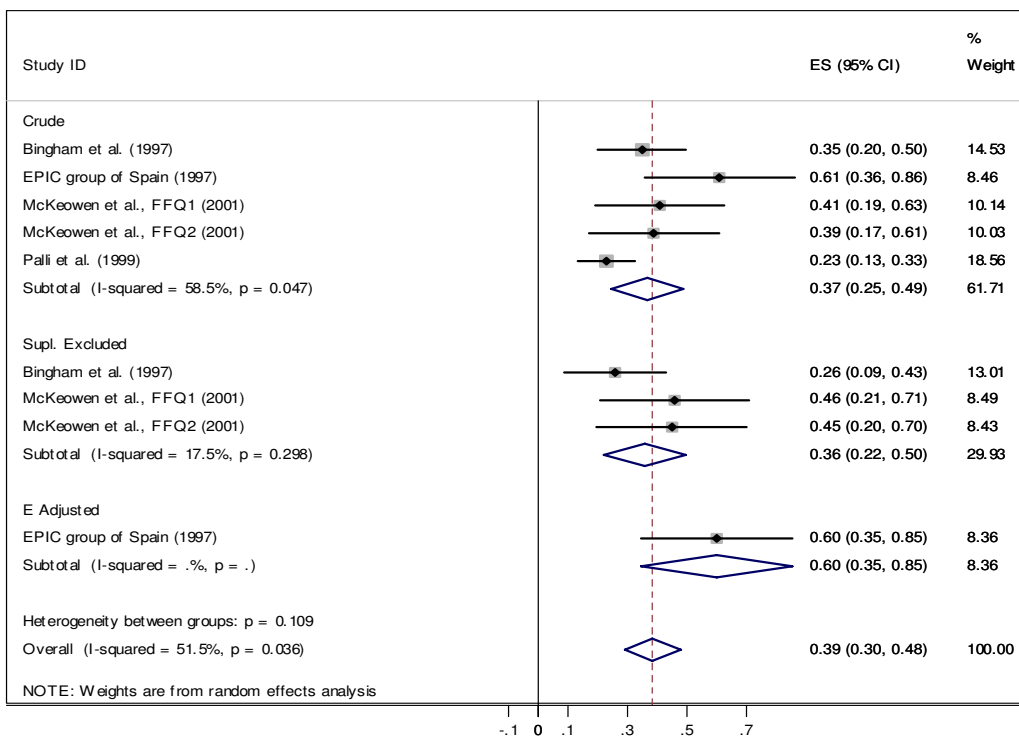
Some studies reported correlation coefficient after excluding supplement users from their analyses. For this group we found  $r = 0.41$  (CI 95%: 0.3, 0.52) for both genders,  $r = 0.36$  (CI 95%: 0.2, 0.50) for female and  $r = 0.42$  (CI 95%: 0.26, 0.58) for male.

**Correlation between dietary recall, weight record and biomarker assessments**

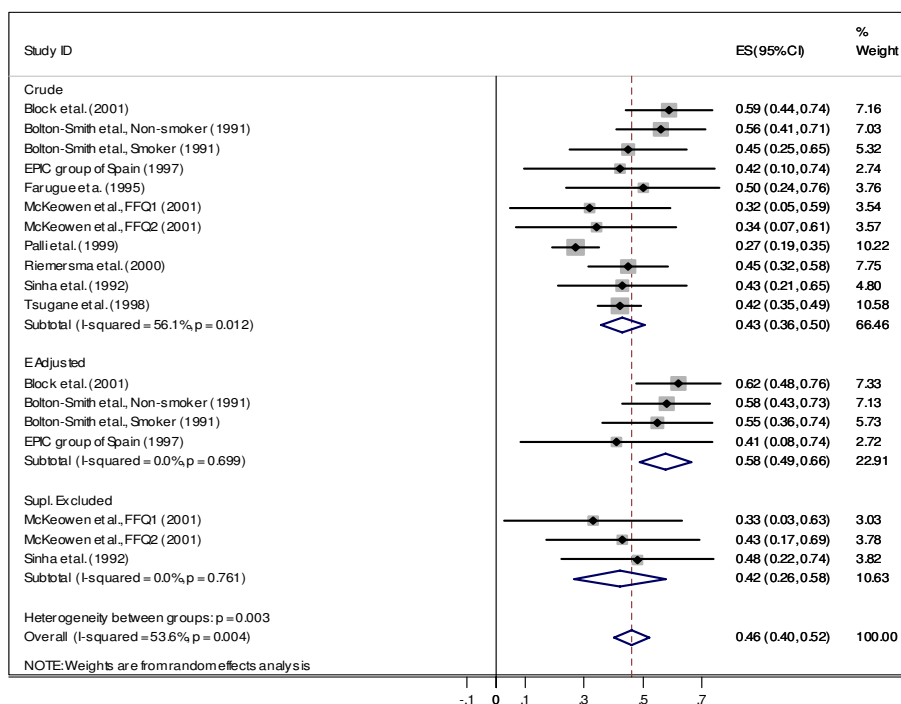
We found 10 studies with 25 correlation coefficients, which measured vitamin C using dietary methods such as 24 hr DR or diet diary and biomarker. Again, some studies reported more than one correlation coefficient. Eleven correlations out of 25 were reported for "both" genders together. A meta-analysis on these studies indicates a positive correlation between DR or diet diary and biomarker with  $r = 0.46$  (95%CI: 0.41, 0.52, see Figure 5). This analysis indicates homogeneity among groups ( $\chi^2 = 4.63$ ,  $df =$



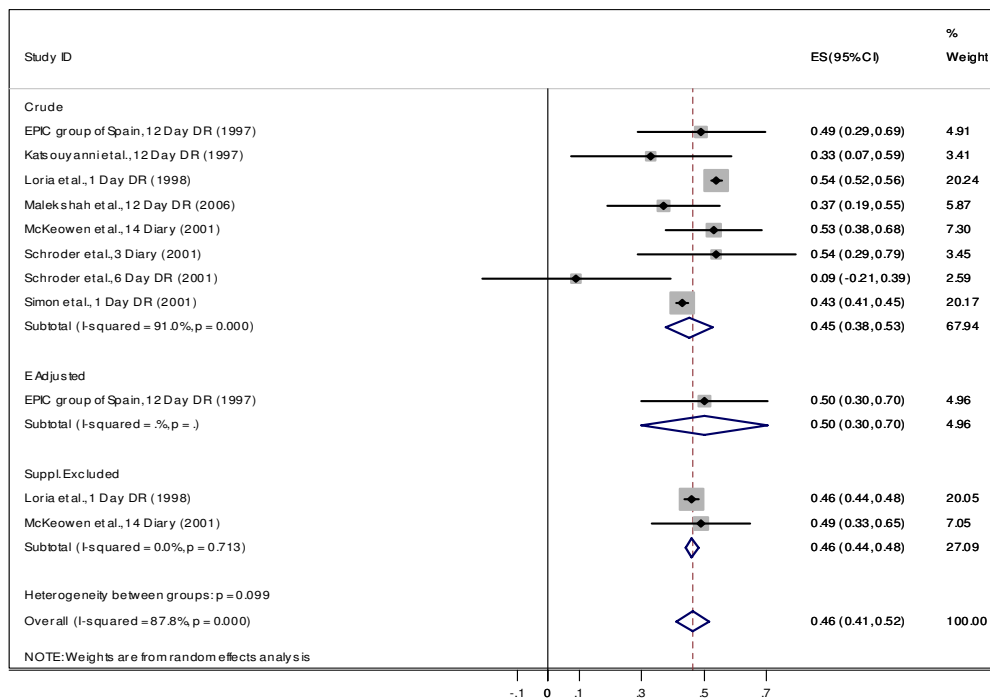
**Figure 2**  
Correlation between dietary vitamin C measured by FFQ and plasma vitamin C for "both" gender.



**Figure 3**  
Correlation between dietary vitamin C measured by FFQ and plasma vitamin C for Females.



**Figure 4**  
Correlation between dietary vitamin C measured by FFQ and plasma vitamin C for Males.



**Figure 5**  
Correlation between dietary vitamin C measured by DR and plasma vitamin C for "both" gender.

2,  $p = 0.099$ ) and that correlations within the *crude* group are not homogeneous ( $\chi^2 = 77.38$ ,  $df = 7$ ,  $p < 0.001$ ). There were only two correlation coefficients in the *supplement-excluded* group. Next, we performed the same meta-analysis for males and females, separately. There was no heterogeneity observed among subgroups (see Figure 6 and Figure 7). The assumption of homogeneity within subgroups was not assessable because there was only one correlation coefficient within *energy adjusted* and *supplement excluded* groups. The estimated correlation coefficient was 0.44 (95% CI: 0.34, 0.55) for females and 0.36 (95% CI: 0.24, 0.48) for males. In our search we found only two studies which reported the correlation of dietary intake and plasma vitamin C for smokers ( $r = 0.60$ , 95% CI: 0.50, 0.70) and one study reported the correlation when adjusted for smoking ( $r = 0.36$ , 95% CI: 0.17, 0.55).

Finally, four studies reported a correlation between biomarker and WR method; the overall estimate of the correlation was 0.39 (CI95%: 0.25, 0.53; Figure 8). No subgroup analysis was carried out because of scarcity of correlation coefficients in this category.

## Discussion

The main goal of the present systematic review and meta-analysis was to investigate the strength of the correlation between plasma level of vitamin C as a biomarker and dietary vitamin C intake measured by methods commonly used for dietary assessment in epidemiological studies. The overall result of this study showed a positive correlation coefficient between FFQ and biomarker (with correlation of 0.35 for "both" genders, 0.39 for females, and 0.46 for males) and between DR/diary and biomarker (with correlation of 0.46 for "both", 0.44 for females, and 0.36 for males). Therefore, for the "both" gender, plasma vitamin C can explain only 12% ( $r^2 \approx 0.12$ ) of the variation of vitamin C intake measured by FFQ and 21% ( $r^2 = 0.21$ ) measured by DR/diary methods. When comparing correlation coefficients between plasma level and intake (measured by FFQ and DR/diary), we observed a stronger correlation between plasma level and intake measured by DR/diary in women, while correlation between plasma level and intake measured by FFQ was stronger among men (DR: 0.44 for women and 0.36 for men; FFQ: 0.39 for women and 0.46 for men). Adjusting for energy intake also improved the observed correlation for FFQ: crude  $r = 0.31$  changed to 0.41. The same effect was also observed for males (crude  $r = 0.43$  changed to 0.58). Comparison between vitamin C intake measured by FFQ and plasma level of vitamin C among smoker and non-smoker showed higher correlation for non-smokers ( $r = 0.45$ ) which indicates that even among non-smokers about 20% of variation can be explained by plasma vitamin C. Similar results observed for supplement excluded group (for

"both"  $r = 0.41$ , 17%, for female  $r = 0.36$  and for male  $r = 0.42$ ).

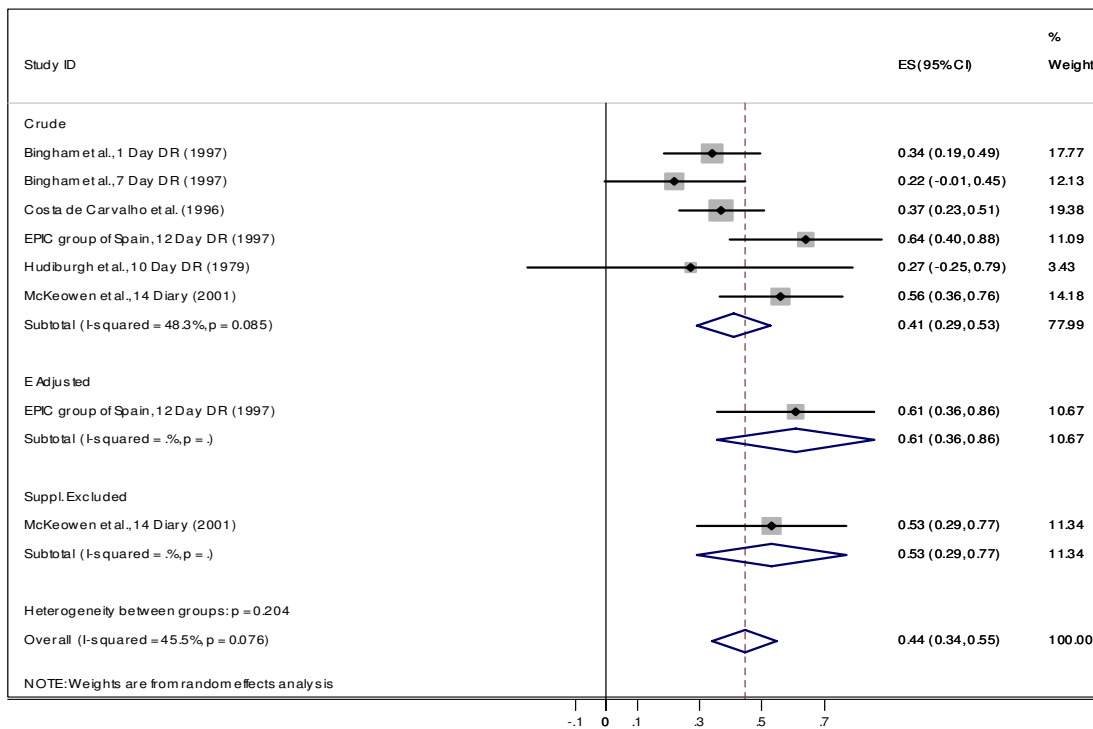
The literature indicates that the correlation between vitamin C intake and plasma vitamin C improves after adjusting for certain variables and it becomes evident that the diet-plasma relationship may be influenced by the presence of various confounding factors, such as body size, smoking, the use of supplements, bioavailability, multiple sources of nutrients, food processing techniques, and disease status. These factors may inhibit or enhance absorption and affect nutrient circulating concentration [29]. Participants for the present meta-analysis were <65 years old, although it has been suggested that repletion and depletion of vitamin C is not age dependent [30].

It has been suggested that for saturation of body pool (neutrophils, leukocytes and other tissues) consumption of 100 mg/day of ascorbic acid is adequate [31] and the slope of relation between intake and blood quickly plateaus for more intake. As can be seen from Table 1, measured vitamin C intakes by FFQ or other dietary methods are not substantially different from this recommendation (varied from 37 to 327 mg/d). Therefore, the plasma level of participants was not at plateau level.

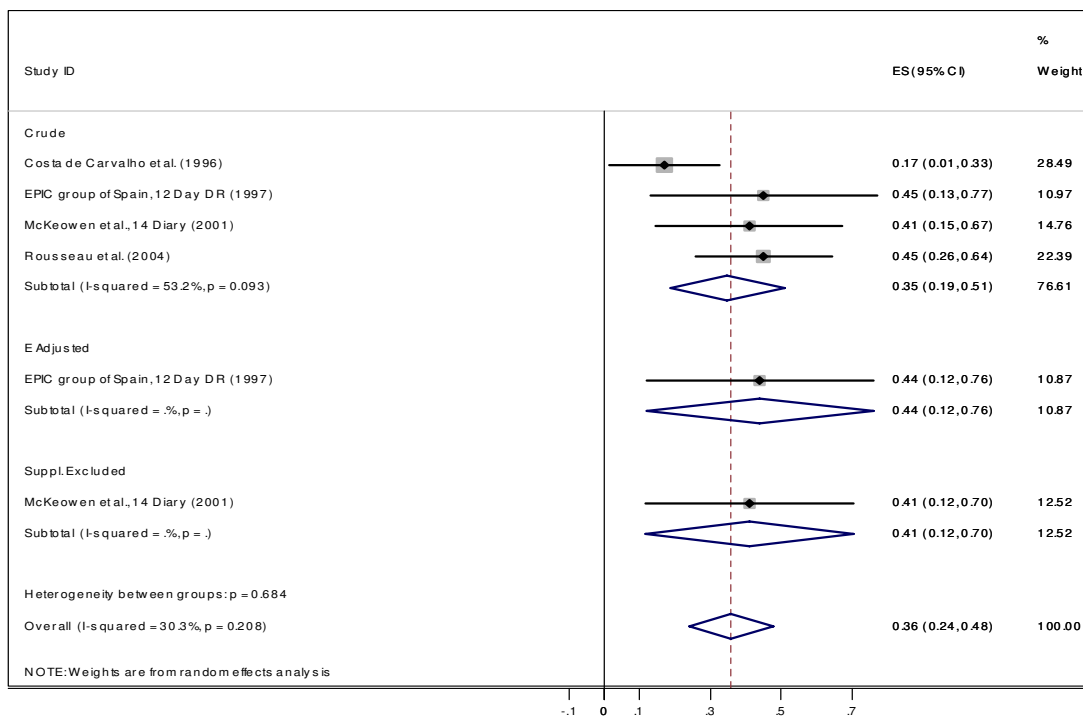
We removed the effect of sex by conducting separate analyses for males and females. Although we were not able to adjust for fat-free mass (FFM), participants included in these studies had BMI of 20 to 27 and were not obese or underweight. Also, because we conducted a separate analysis for each gender the effect of body size was mostly taken into account. As Blanchard [30] showed, a significant portion of gender difference on vitamin C depletion and repletion is related to FFM effects. Furthermore, we compared the method of analysis among all studies (see Additional file 2), almost all studies followed the same procedure for blood storage and analysis.

For both genders even after energy-adjustment only 36% of variation was explained by plasma vitamin C. An observed moderate correlation may be the consequence of uncontrollable confounding factors or due to inaccurate dietary intake measurement. Also, because of the burden of the data collection process on respondents, accurate measuring of dietary intake may be difficult. In addition, the plasma biomarker measures the amount of vitamin C in foods after storage, preparation, digestion and absorption which may also depend on various homeostatic and metabolic mechanisms.

The observed moderate correlation between the biomarker and intake measured by FFQ may support the suggestion that FFQs are more reliable for ranking the dietary intake of subjects as opposed to determining intake as a

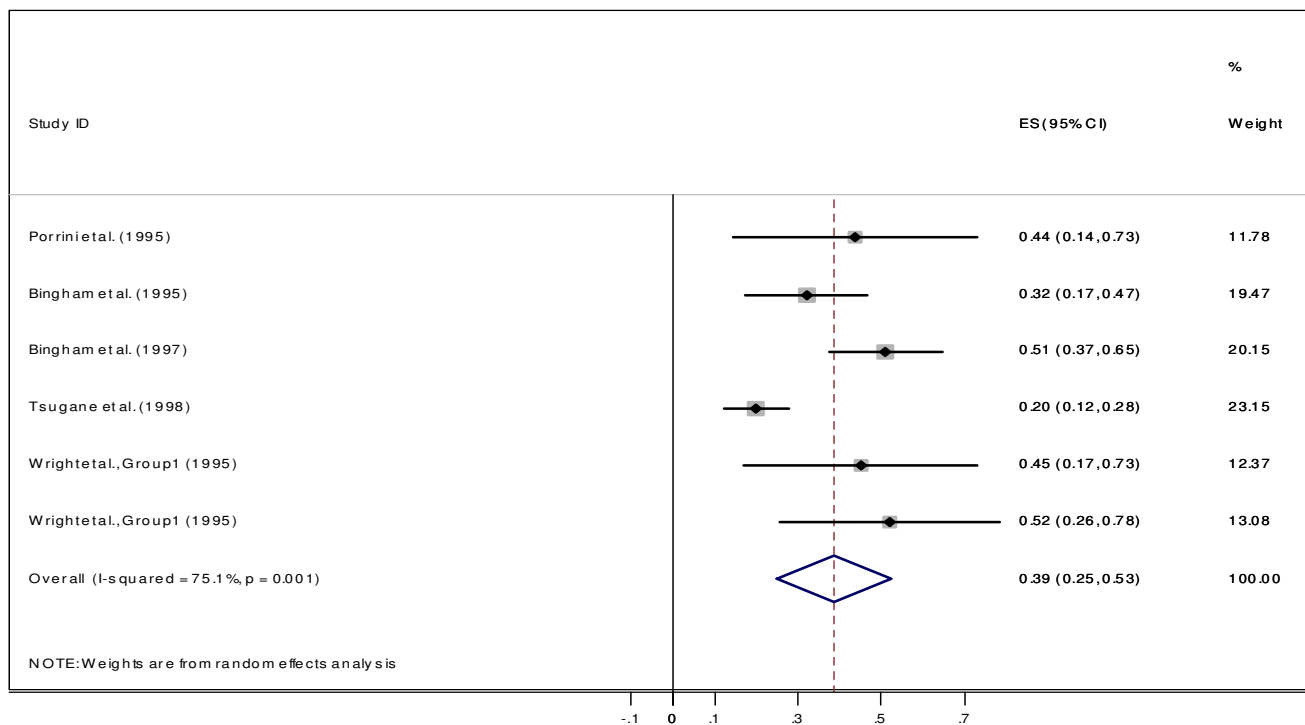


**Figure 6**  
Correlation between dietary vitamin C measured by DR and plasma vitamin C for Females.



**Figure 7**  
Correlation between dietary vitamin C measured by DR and plasma vitamin C for Males.





**Figure 8**  
Correlation dietary vitamin C measured by between WR and plasma vitamin C.

primary outcome [32]. While a stronger correlation exists between biomarker and DR, it may be suggested that several days of DR could measure long-term vitamin C intake more accurately [16].

The main limitation of this meta-analysis is that it is based on observational studies; therefore, the confounding factors that might affect the correlation between plasma vitamin C intake and dietary intake could not be controlled.

**Conclusion**

Evidently, our findings imply that FFQ and DR/diary and plasma vitamin C have a moderate relationship and therefore, may not measure the same thing. This analysis explains some reasons for the disagreement between intake and plasma level of vitamin C in observational studies. Dietary assessment methods measure dietary intake while plasma vitamin C is a measure of the level of plasma vitamin C circulating in the blood. The relation between intake and plasma level of vitamin C would probably be less complicated if we could assess vitamin C intake more accurately. Although plasma vitamin C level is probably a fair reflection of vitamin C status, many factors, which are mentioned previously, influence this relation.

**List of abbreviations**

FFQ Food Frequency Questionnaire

DR Dietary Recalls

MESH Medical subject heading

FFM fat-free mass

**Competing interests**

The author(s) declare that they have no competing interests.

**Authors' contributions**

MD participated in design of study, ran the electronic searches, reviewed all abstracts and articles, coordinated and drafted the manuscript, revised and approved final manuscript.

NAD participated in design of study, performed statistical analysis, drafted the statistical part of manuscript, took part as the third reviewer, reviewed and approved final manuscript.

CRM ran the electronic searches, reviewed all abstracts and articles, helped to draft the manuscripts, reviewed and approved final manuscript.

**Table 1: BMI (or weight), smoking status, and vitamin C intake of participants involved in studies included in the meta-analysis**

Study	BMI/Weight (kg)	Smoking Status	Measured Vitamin C intake (mg/d)	
			DR/WR/FR	FFQ
<b>1. Bingham</b> et al., 1995 [12] Taken from 1994	NR	NR	87 (56)	122 (53)
<b>2. Block</b> et al., 2001 [33]	Wt = 82.6 (11.0)	non-smoker	NR	NR
<b>3. Boeing</b> et al., 1997 [34]	NR	adjusted for smoking	NR	NR
<b>4. Bolton-Smith</b> et al., 1991 [28] both gender	25.8 (3.2)	non-smoker		61.1 (24.8)
<b>5. Chiplonkar</b> et al., 2002 [35] Men	BMI = 20.8 (3.3)	NR	NR	NR
Women	BMI = 20.8 (3.9)			
<b>6. Costa de Carvalho</b> et al., 1996 [36] Men	BMI = 24.8 (3.5)	NR	88 (79)	
Women	BMI = 22.4 (3.4)		83 (77)	
<b>7. Cooney</b> et al., 1995 [37]	NR	Non-smoker	NR	NR
<b>8. Drewnowski</b> et al., 1997 [15] Men	BMI = 24.4	NR	NR	NR
Women	BMI = 22.6			
<b>9. EPIC group of Spain</b> , 1997 [38] Men	NR	NR	100.9 (50.1)	DH 116.4 (86)
Women			110.8 (57)	121.9 (72.3)
<b>10. Faruque</b> et al., 1995 [39] both gender	20.0 (0.4)	Non-smoker	83.4 (7.5)	-----
<b>11. Hudiburgh</b> et al., 1979 [40] Women	NR	NR	140 (148)	-----
<b>12. Jacques</b> et al., 1993 [41] Men	NR	NR	-----	256 (154)
Women				221 (154)
<b>13. Katsouyanni</b> et al., 1997 [42] Men		non-smoker	170.3 (59.1)	304.8 (145.5)
Women			145.7 (44.7)	327.5 (170.1)
<b>14. Lori</b> et al., 1998 [43] Men			73.1	
Women			75.2	
<b>15. Malekshah</b> et al., 2006 [44] Men	24.0 (3.9)	NR	45 (21)	89 (54)
Women	26.5 (5.8)		37 (24)	69 (42)
<b>16. McKeowen</b> et al., 2001 [45] Men	27 (3)	NR	77 (34)	111 (41)
Women	25 (4)		95 (48)	132 (65)
<b>17. Palli</b> et al., 1999 [46] Men	*	adjusted for smoking	-----	92.7 (2.0)
Women				95.4 (2.2)
<b>18. Porrini</b> et al., 1995 [47] both gender	21.1 (2.7)	Non-smoker	86.4 (39.7)	108.7 (49.2)
<b>19. Riemersma</b> et al., 2000 [48]	26.1 (0.3)	adjusted for smoking	-----	54.8 (1.8)
<b>20. Rousseau</b> et al. 2004 [49]	2.4 (2.5)	Non-smoker	-----	
<b>21. Schroder</b> et al., 2001 [50] both gender	22.4 (2.9)	8% smoker	105 (100)	267 (182)
<b>22. Simon</b> et al., 2001 [2]	25.5–26.6	Adjusted	-----	
<b>23. Sinha</b> et al., 1992 [51]	Wt = 80.9 (1.34) kg	Non-smoker	-----	155 (11.0)
<b>24. Tuscane</b> et al., 1998 [52]		Adjusted for smoking		55.7
<b>25. Wright</b> et al., 1995 [53] Men	Normal population	Smoker and non-smoker	66 (5)	
Women			72 (5)	

\*317 subject < 23.4, 322 subjects 23.4–26.3, 306 subjects > 26.3

NR not reported NA not available DH dietary history

LT participated in design of study, helped to draft the manuscripts, reviewed and approved final manuscript.

All authors read and approved the final manuscript.

## Additional material

### Additional file 1

Description of studies included in meta-analysis. Studies that reported the correlation coefficient between dietary intake of vitamin C measured by dietary assessment tools and plasma level of vitamin C.

Click here for file

[<http://www.biomedcentral.com/content/supplementary/1475-2891-6-41-S1.pdf>]

### Additional file 2

Summary of blood collection and analytical methods. Description of blood collection and analytical method for studies that reported the correlation coefficient between dietary intake of vitamin C measured by dietary assessment tools and plasma level of vitamin C.

Click here for file

[<http://www.biomedcentral.com/content/supplementary/1475-2891-6-41-S2.pdf>]

## Acknowledgements

We wish to thank Dr. Yusuf (Director of Population Health Research Institute) for all his support and guidance.

## References

- Carr AC, Frei B: **Toward a new recommended dietary allowance for vitamin C based on antioxidant and health effects in humans.** *Am J Clin Nutr* 1999, **69**:1086-1107.
- Simon JA, Hudes ES, Tice JA: **Relation of serum ascorbic acid to mortality among US adults.** *J Am Coll Nutr* 2001, **20**:255-263.
- Ziegler RG: **Vegetables, fruits, and carotenoids and the risk of cancer.** *Am J Clin Nutr* 1991, **53**:251S-259S.
- Steinmetz KA, Potter JD: **Vegetables, fruit, and cancer. II. Mechanisms.** *Cancer Causes Control* 1991, **2**:427-442.
- Knekt P, Reunanen A, Jarvinen R, Seppanen R, Heliovaara M, Aromaa A: **Antioxidant vitamin intake and coronary mortality in a longitudinal population study.** *Am J Epidemiol* 1994, **139**:1180-1189.
- Knekt P, Ritz J, Pereira MA, O'Reilly EJ, Augustsson K, Fraser GE, Goldbourt U, Heitmann BL, Hallmans G, Liu S, et al.: **Antioxidant vitamins and coronary heart disease risk: a pooled analysis of 9 cohorts.** *Am J Clin Nutr* 2004, **80**:1508-1520.
- Gale CR, Martyn CN, Winter PD, Cooper C: **Vitamin C and risk of death from stroke and coronary heart disease in cohort of elderly people.** *BMJ* 1995, **310**:1563-1566.
- Rimm EB, Stampfer MJ, Ascherio A, Giovannucci E, Colditz GA, Willett WC: **Vitamin E consumption and the risk of coronary heart disease in men.** *N Engl J Med* 1993, **328**:1450-1456.
- Stampfer MJ, Hennekens CH, Manson JE, Colditz GA, Rosner B, Willett WC: **Vitamin E consumption and the risk of coronary disease in women.** *N Engl J Med* 1993, **328**:1444-1449.
- Ness A, Egger M, Smith GD: **Role of antioxidant vitamins in prevention of cardiovascular diseases. Meta-analysis seems to exclude benefit of vitamin C supplementation.** *BMJ* 1999, **319**:577.
- Bingham SA, Gill C, Welch A, Day K, Cassidy A, Khaw KT, Sneyd MJ, Key TJ, Roe L, Day NE: **Comparison of dietary assessment methods in nutritional epidemiology: weighed records v. 24 h recalls, food-frequency questionnaires and estimated-diet records.** *Br J Nutr* 1994, **72**:619-643.
- Bingham SA, Cassidy A, Cole TJ, Welch A, Runswick SA, Black AE, Thurnham D, Bates C, Khaw KT, Key TJ, et al.: **Validation of weighed records and other methods of dietary assessment using the 24 h urine nitrogen technique and other biological markers.** *Br J Nutr* 1995, **73**:531-550.
- Bingham SA, Gill C, Welch A, Cassidy A, Runswick SA, Oakes S, Lubin R, Thurnham DI, Key TJ, Roe L, et al.: **Validation of dietary assessment methods in the UK arm of EPIC using weighed records, and 24-hour urinary nitrogen and potassium and serum vitamin C and carotenoids as biomarkers.** *Int J Epidemiol* 1997, **26**(Suppl 1):S137-S151.
- Brunner E, Stallone D, Juneja M, Bingham S, Marmot M: **Dietary assessment in Whitehall II: comparison of 7 d diet diary and food-frequency questionnaire and validity against biomarkers.** *Br J Nutr* 2001, **86**:405-414.
- Drewnowski A, Rock CL, Henderson SA, Shore AB, Fischler C, Galan P, Preziosi P, Hercberg S: **Serum beta-carotene and vitamin C as biomarkers of vegetable and fruit intakes in a community-based sample of French adults.** *Am J Clin Nutr* 1997, **65**:1796-1802.
- Buzzard M: **24-Hour dietary recall and food record methods.** In *Nutrition Epidemiology Volume 2*. Edited by: Willett WC. New York, Oxford, Oxford University Press; 1998:50-73.
- Stroup DF, Berlin JA, Morton SC, Olkin I, Williamson GD, Rennie D, Moher D, Becker BJ, Sipe TA, Thacker SB: **Meta-analysis of observational studies in epidemiology: a proposal for reporting. Meta-analysis Of Observational Studies in Epidemiology (MOOSE) group.** *JAMA* 2000, **283**:2008-2012.
- Lang TA, Secic M: *How to report Statistics in Medicine: Annotated Guidelines for Authors, Editors, and Reviewers* Philadelphia, Pennsylvania: American College of Physicians; 1997.
- Dennis LK, Snetselaar LG, Nothwehr FK, Stewart RE: **Developing a scoring method for evaluating dietary methodology in reviews of epidemiologic studies.** *J Am Diet Assoc* 2003, **103**:483-487.
- Landis JR, Koch GG: **The measurement of observer agreement for categorical data.** *Biometrics* 1977, **33**:159-174.
- McGraw KO, Wong SP: **Forming inferences about some intraclass correlation coefficients.** *Psychological Methods* 1996, **1**:30-46.
- Fleiss JL: **The statistical basis of meta-analysis.** *Stat Methods Med Res* 1993, **2**:121-145.
- DerSimonian R, Laird N: **Meta-analysis in clinical trials.** *Control Clin Trials* 1986, **7**:177-188.
- Bradburn MJ, Deeks JJ, Altman DG: **sbe24: metan – an alternative meta-analysis command.** *Stata Technical Bulletin* 1998, **44**:4-15.
- Hunter JE, Schmidt FL: *Methods of meta-analysis: Correcting error and bias in research findings* Newbury Park, CA: Sage; 1990.
- Kobayashi M, Sasaki S, Tsugane S: **Validity of a self-administered food frequency questionnaire used in the 5-year follow-up survey of the JPHC Study Cohort I to assess carotenoids and vitamin C intake: comparison with dietary records and blood level.** *J Epidemiol* 2003, **13**:S82-S91.
- Gallagher SK, Johnson LK, Milne DB: **Short-and long-term variability of selected indices related to nutritional status. II. Vitamins, lipids, and protein indices.** *Clin Chem* 1992, **38**:1449-1453.
- Bolton-Smith C, Casey CE, Gey KF, Smith WC, Tunstall-Pedoe H: **Antioxidant vitamin intakes assessed using a food-frequency questionnaire: correlation with biochemical status in smokers and non-smokers.** *Br J Nutr* 1991, **65**:337-346.
- Jacob RA: **Vitamin C.** In *Modern Nutrition* 8th edition. Edited by: Shills ME, Olson JA, Shike M. Williams and Wilkins; 1994:432-448.
- Blanchard J: **Effects of gender on vitamin C pharmacokinetics in man.** *J Am Coll Nutr* 1991, **10**:453-459.
- Naidu KA: **Vitamin C in human health and disease is still a mystery? An overview.** *Nutr J* 2003, **2**:7.
- Willett WC: **Food Frequency Method.** In *Nutrition Epidemiology* Edited by: Willett WC. New York Oxford: Oxford University Press; 1998:74-101.
- Block G, Norkus E, Hudes M, Mandel S, Helzlsouer K: **Which plasma antioxidants are most related to fruit and vegetable consumption?** *Am J Epidemiol* 2001, **154**:1113-1118.
- Boeing H, Bohlscheid-Thomas S, Voss S, Schneeweiss S, Wahrendorf J: **The relative validity of vitamin intakes derived from a food frequency questionnaire compared to 24-hour recalls and biological measurements: results from the EPIC pilot study**

- in Germany. **European Prospective Investigation into Cancer and Nutrition.** *Int J Epidemiol* 1997, **26**(Suppl 1):S82-S90.
35. Chiplonkar SA, Agte VV, Mengale SS, Tarwadi KV: **Are lifestyle factors good predictors of retinol and vitamin C deficiency in apparently healthy adults?** *Eur J Clin Nutr* 2002, **56**:96-104.
  36. de Carvalho MJ, Guillard JC, Moreau D, Boggio V, Fuchs F: **Vitamin status of healthy subjects in Burgundy (France).** *Ann Nutr Metab* 1996, **40**:24-51.
  37. Cooney RV, Franke AA, Hankin JH, Custer LJ, Wilkens LR, Harwood PJ, Le Marchand L: **Seasonal variations in plasma micronutrients and antioxidants.** *Cancer Epidemiol Biomarkers Prev* 1995, **4**:207-215.
  38. **Relative validity and reproducibility of a diet history questionnaire in Spain. III. Biochemical markers. EPIC Group of Spain. European Prospective Investigation into Cancer and Nutrition.** *Int J Epidemiol* 1997, **26**(Suppl 1):S110-S117.
  39. Faruque MO, Khan MR, Rahman MM, Ahmed F: **Relationship between smoking and antioxidant nutrient status.** *Br J Nutr* 1995, **73**:625-632.
  40. Hudiburgh NK, Milner AN: **Influence of oral contraceptives on ascorbic acid and triglyceride status.** *J Am Diet Assoc* 1979, **75**:19-22.
  41. Jacques PF, Sulsky SI, Sadowski JA, Phillips JC, Rush D, Willett WC: **Comparison of micronutrient intake measured by a dietary questionnaire and biochemical indicators of micronutrient status.** *Am J Clin Nutr* 1993, **57**:182-189.
  42. Katsouyanni K, Rimm EB, Gnardellis C, Trichopoulos D, Polychronopoulos E, Trichopoulou A: **Reproducibility and relative validity of an extensive semi-quantitative food frequency questionnaire using dietary records and biochemical markers among Greek schoolteachers.** *Int J Epidemiol* 1997, **26**(Suppl 1):S118-S127.
  43. Loria CM, Whelton PK, Caulfield LE, Szklo M, Klag MJ: **Agreement among indicators of vitamin C status.** *Am J Epidemiol* 1998, **147**:587-596.
  44. Malekshah AF, Kimiagar M, Saadatian-Elahi M, Poursams A, Nouriae M, Gogiani G, Hoshiarrad A, Sadatsafavi M, Golestan B, Yoonesi A, et al: **Validity and reliability of a new food frequency questionnaire compared to 24 h recalls and biochemical measurements: pilot phase of Golestan cohort study of esophageal cancer.** *Eur J Clin Nutr* 2006, **60**:971-977.
  45. McKeown NM, Day NE, Welch AA, Runswick SA, Luben RN, Mulligan AA, McTaggart A, Bingham SA: **Use of biological markers to validate self-reported dietary intake in a random sample of the European Prospective Investigation into Cancer United Kingdom Norfolk cohort.** *Am J Clin Nutr* 2001, **74**:188-196.
  46. Palli D, Decarli A, Russo A, Cipriani F, Giacosa A, Amadori D, Salkeld R, Salvini S, Buiatti E: **Plasma levels of antioxidant vitamins and cholesterol in a large population sample in central-northern Italy.** *Eur J Nutr* 1999, **38**:90-98.
  47. Porrini M, Gentile MG, Fidanza F: **Biochemical validation of a self-administered semi-quantitative food-frequency questionnaire.** *Br J Nutr* 1995, **74**:323-333.
  48. Riemersma RA, Carruthers KF, Elton RA, Fox KA: **Vitamin C and the risk of acute myocardial infarction.** *Am J Clin Nutr* 2000, **71**:1181-1186.
  49. Rousseau AS, Hiningier I, Palazzetti S, Faure H, Roussel AM, Margaritis I: **Antioxidant vitamin status in high exposure to oxidative stress in competitive athletes.** *Br J Nutr* 2004, **92**:461-468.
  50. Schroder H, Covas MI, Marrugat J, Vila J, Pena A, Alcantara M, Masia R: **Use of a three-day estimated food record, a 72-hour recall and a food-frequency questionnaire for dietary assessment in a Mediterranean Spanish population.** *Clin Nutr* 2001, **20**:429-437.
  51. Sinha R, Block G, Taylor PR: **Determinants of plasma ascorbic acid in a healthy male population.** *Cancer Epidemiol Biomarkers Prev* 1992, **1**:297-302.
  52. Tsugane S, Fahey MT, Kobayashi M, Sasaki S, Tsubono Y, Akabane M, Gey F: **Four food-frequency categories of fruit intake as a predictor of plasma ascorbic acid level in middle-aged Japanese men.** *Ann Epidemiol* 1998, **8**:378-383.
  53. Wright AJ, Southon S, Bailey AL, Finglas PM, Maisey S, Fulcher RA: **Nutrient intake and biochemical status of non-institutionalized elderly subjects in Norwich: comparison with younger adults and adolescents from the same general community.** *Br J Nutr* 1995, **74**:453-475.

Publish with **BioMed Central** and every scientist can read your work free of charge

"BioMed Central will be the most significant development for disseminating the results of biomedical research in our lifetime."

Sir Paul Nurse, Cancer Research UK

Your research papers will be:

- available free of charge to the entire biomedical community
- peer reviewed and published immediately upon acceptance
- cited in PubMed and archived on PubMed Central
- yours — you keep the copyright

Submit your manuscript here:  
[http://www.biomedcentral.com/info/publishing\\_adv.asp](http://www.biomedcentral.com/info/publishing_adv.asp)

