



## The in-silico feasibility of dose escalated, hypofractionated radiotherapy for rectal cancer

Lynsey Devlin<sup>a,b,\*</sup>, Laura Grocott<sup>b,c</sup>, Bianca Hunter<sup>c</sup>, Hiwot Chemu<sup>d</sup>, Aileen Duffton<sup>a,f</sup>, Alec McDonald<sup>d</sup>, Nicholas Macleod<sup>d</sup>, Philip McLoone<sup>e</sup>, Sean M. O’Cathail<sup>f</sup>

<sup>a</sup> Department of Radiotherapy, The Beatson West of Scotland Cancer Centre, Glasgow, United Kingdom

<sup>b</sup> CRUK RadNet Glasgow, University of Glasgow, Glasgow, United Kingdom

<sup>c</sup> Department of Radiotherapy Physics, The Beatson West of Scotland Cancer Centre, Glasgow, United Kingdom

<sup>d</sup> Department of Clinical Oncology, The Beatson West of Scotland Cancer Centre, Glasgow, United Kingdom

<sup>e</sup> Institute of Health & Wellbeing, University of Glasgow, Glasgow, United Kingdom

<sup>f</sup> Institute of Cancer Sciences, University of Glasgow, Glasgow, United Kingdom

### ABSTRACT

**Background and purpose:** Short course radiotherapy (SCRT) has a low biological prescription dose. Rectal cancer has a dose response relationship and moderate  $\alpha/\beta$  ratio ( $\sim 5$ ). We hypothesise hypofractionated dose escalation has radiobiological advantages. We assessed in-silico dose escalation to the primary tumour using a simultaneous integrated boost (SIB) technique.

**Materials and methods:** Patients who had received 25 Gy/5# were enrolled. GTV was macroscopic tumour including lumen. CTVA was GTV + 10 mm. CTVB included elective nodes. PTV<sub>Low</sub> was created from CTVF (CTVA + CTVB) + 7 mm. PTV<sub>High</sub> (SIB) was GTV + 5 mm margin. OAR were as per RTOG guidelines. Each patient had 4 plans created at increasing dose levels (27.5 Gy, 30 Gy, 32.5 Gy and 35 Gy) to PTV<sub>High</sub>. PTV<sub>Low</sub> was 25 Gy/5#.

5 test plans were created for each patient in Eclipse<sup>TM</sup> v15.5 and consisted of 2 VMAT full arcs (6 MV), Varian Truebeam (2.7). Planning objectives were set in the Photon optimiser (PO) and recalculated using Acuros v15.5. *A priori* feasibility was defined as 90% of plans achieving the planning objectives at 32.5 Gy dose level (EqD2 53.4 Gy).

**Results:** 20 SCRT patients median age 70, F (n = 5), M (n = 15). Rectum level; low (n = 12), mid (n = 3) and upper (n = 5). 100 plans were analysed. Mean volume of PTV<sub>High</sub> was 130 cm<sup>3</sup> (SD 81.5) and PTV<sub>Low</sub> 769.6 cm<sup>3</sup> (SD 241.1). 100% plans complied with mandatory planning dose metrics for each structure at the 25 Gy/5# plan and each dose level.

**Conclusion:** Hypofractionated dose escalation to the primary tumour up to 35 Gy/5# is technically feasible in rectal cancer radiotherapy.

### Introduction

Radiotherapy plays a key role in the management of rectal cancer. In the locally advanced setting, neoadjuvant radiation decreases local recurrence, through a combination of tumour regression and pelvic sterilisation of microscopic disease [1]. Numerous, large, high quality randomised controlled trials demonstrate this can be achieved by either pre-operative 45–50.4 Gy /25–28# with concurrent fluoropyrimidines [2,3] long course chemoradiotherapy (LCCRT) or 25 Gy/5# short course radiotherapy (SCRT) [4,5]. Direct comparison shows no long-term superiority of either approach [6,7]. Despite this equipoise, LCCRT dominates the landscape as the *de facto* standard of care [8,9]. The original schedule for short course radiotherapy (SCRT) involves surgery within 7–10 days of radiotherapy completion, presenting logistical challenges. Additionally, tumours have a low pathological complete response (pCR)

rate of  $\sim 1\%$  [6]. Recently, the phase 3 non-inferiority Stockholm III trial [10] demonstrated SCRT plus a 4–8 weeks delay, is an equivalent neoadjuvant approach in terms of local control. The pCR increased to 10.4%, from 0.3% in the SCRT plus immediate surgery arm, closer to that seen in LCCRT. The use of SCRT is further reinvigorated by the practice changing sequential administration of neoadjuvant chemotherapy [11,12].

SCRT has significant advantages for patients and health systems over LCCRT. Patients have less hospital visits and it is cheaper to deliver [13]. US cost-effectiveness studies comparing SCRT and LCCRT favour SCRT [14–16].

The demonstrable equivalence in clinical outcomes of a moderately hypofractionated regime (25 Gy/5#) and standard fractionation regime (50 Gy/25#) bears further radiobiological interrogation. The relationship between fraction size and tumour/tissue response is well described

\* Corresponding author at: Department of Radiotherapy, The Beatson West of Scotland Cancer Centre, Glasgow, United Kingdom.

E-mail address: [Lynsey.devlin@ggc.scot.nhs.uk](mailto:Lynsey.devlin@ggc.scot.nhs.uk) (L. Devlin).

<https://doi.org/10.1016/j.ctro.2022.06.003>

Received 24 May 2022; Accepted 9 June 2022

Available online 11 June 2022

2405-6308/© 2022 The Authors. Published by Elsevier B.V. on behalf of European Society for Radiotherapy and Oncology. This is an open access article under the CC BY license (<http://creativecommons.org/licenses/by/4.0/>).

by the  $\alpha/\beta$  value in the linear quadratic model of fractionation sensitivity [17]. Low  $\alpha/\beta$  values signify greater sensitivity to fraction size than higher  $\alpha/\beta$  values. The outlined prescriptions are not iso-effective unless the  $\alpha/\beta$  value of rectal adenocarcinoma is moderate to low, this has been estimated to be  $\sim 5$  Gy [18].

Finally, there exists a dose–response relationship in rectal adenocarcinoma. Higher overall tumour dose results in improved tumour regression [19]. The dose response curve found to be steepest between 50 and 70 Gy in standard fractionation, suggesting that rectal cancers are routinely under dosed in radiobiological terms for maximal response. Despite this dose escalation trials in LCCRT have had mixed results, the RECTAL-BOOST study reporting no increase in pCR rates using a sequential boost technique [20]. Encouragingly a systematic review of inverse planned techniques found improved pCR rates with doses greater than 54 Gy [21]. This supports the trend towards organ preservation strategies, with potential in both the LCCRT and SCRT settings for dose escalation to avoid surgical morbidity, a permanent stoma and improve patient’s quality of life (QOL) [22].

Given the low biological dose of SCRT (25 Gy/5#), the existence of a dose response and the moderate  $\alpha/\beta$  ratio ( $\sim 5$ ) of rectal cancer, we hypothesise that hypofractionated dose escalation would have significant radiobiological advantages. We aimed to assess the in-silico feasibility of dose escalation to the primary tumour using a simultaneous integrated boost (SIB) technique planned for 5 fractions. Dose to the SIB volume was increased by 2.5 Gy increments whilst conserving organs at risk (OAR). Plans were created over five dose levels as shown in Table 1. Dose levels were 25 Gy/5# (level 1), 27.5 Gy/5# (level 2), 30 Gy/5# (level 3), 32.5 Gy/5# (level 4) and 35 Gy/5# (level 5).

## Methods

Operable rectal cancer patients who previously received neoadjuvant SCRT (25 Gy/5#) were included. Palliative/local control patients were excluded. Patients were immobilised supine with knee and ankle supports using Prostep (Medizintechnik, GMBH), instructed to empty their bowels/bladder and drink 500mls 30 minutes before scanning. A planning CT scan was acquired using a Phillips Brilliance Big Bore (Phillips Medical Systems, USA) scanner with intravenous contrast, unless contraindicated by renal function. Scan extent including L2/3 to mid-femur with a 2–2.5 mm slice thickness. CT data sets were anonymised using ARIA v15.1 (Varian Medical systems, Palo Alto) to create a test patient library. Institutional approvals were obtained.

### Delineation of structures

The GTV was the macroscopic primary tumour including the circumferential rectal lumen. The diagnostic MRI scan was used alongside the planning CT to aid delineation. The CTVA included the GTV + 1 cm margin. The CTVB included the mesorectum, internal iliac, presacral and obturator lymph nodes, outlined in accordance with the UK rectal IMRT guidance [23]. Involved/suspicious nodes were not boosted. CTVF was summation of CTVA and CTVB. PTV\_Low was created from CTVF by adding a 7 mm margin and PTV\_High (SIB) from the GTV by adding 5 mm [24,25].

OAR were delineated as per RTOG definitions [26], bladder

**Table 1**  
The EqD2 of dose levels 1–5 for  $\alpha/\beta$  values of 10, 5 and 3.

Dose level	Dose/fractionation	EqD2 $\alpha/\beta$ 10	EqD2 $\alpha/\beta$ 5	EqD2 $\alpha/\beta$ 3
1	25 Gy/5	31.3 Gy	35.7 Gy	40 Gy
2	27.5 Gy/5	35.5 Gy	41.2 Gy	46.8 Gy
3	30 Gy/5	40 Gy	47.1 Gy	54 Gy
4	32.5 Gy/5	44.7 Gy	53.4 Gy	61.8 Gy
5	35 Gy/5	49.6 Gy	60 Gy	70 Gy

**Table 2**

Study patient characteristics (median values with interquartile range in brackets).

Patient characteristics	
No. of patients	20
Age years (median [IQR])	71.5 [63.75–75]
Female/Male	F = 5 M = 15
T stage (n)	
T1	1
T2	4
T3	11
T4	4
N0/N1	14/6
Rectum level (n)	
lower/mid/upper	12/3/5
PTV_low (cm <sup>3</sup> )	740 (610.5–836.8)
PTV_high (cm <sup>3</sup> )	110.3 (76.7–149.6)
GTV (cm <sup>3</sup> )	40.5 (30.8–71)
Small Bowel (cm <sup>3</sup> )	153.9 (97.5–276.2)
Bladder (cm <sup>3</sup> )	164.7 (121.4–364)
Bowel cavity (cm <sup>3</sup> )	967.9 (549.7–1088.1)
Large Bowel (cm <sup>3</sup> )	19.31 (9.7–34.4)
Rectal diameter (cm)	3.7 (3–4.3)
Tumour length (cm)	4.8 (3.5–6.3)

including the wall and lumen, small bowel loops and bowel cavity. Bowel cavity was defined as most inferior small or large bowel loop, or above the rectum, whichever was most inferior. The small bowel loops and bowel cavity were contoured 5 cm above PTV\_Low. The left and right femoral heads were contoured from femoral head to lesser trochanters. Large bowel was defined as 2 cm outside of PTV\_High with an inferior limit of levator-ani muscles. Plans were not optimised using the large bowel structure, this structure was used to record dose metrics at  $D_{1cc} < 30$  Gy,  $D_{0.5cc} < 32$  Gy [27] for plan dose levels 32.5 Gy and 35 Gy.

All structures were delineated by a single Clinical Oncologist (CO), to reduce inter-observer variation, and independently checked by another CO.

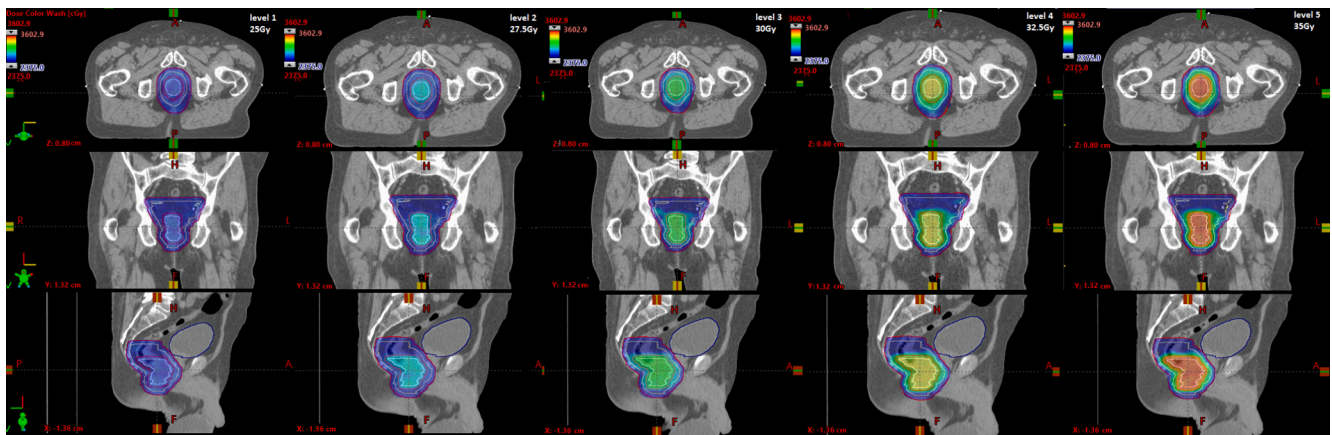
### Treatment planning system and dose calculation

Treatment plans were created and checked by two experienced planners independently using the Eclipse™ treatment planning system (TPS) PO v15.5 and Acuros v15.5 [Varian Medical Systems, Palo Alto, Ca, USA] for final calculation on a grid size of 2 mm. Volumetric modulated arc therapy (VMAT) plans were generated using 6MV photons at dose-rate of 600 MU/min. The maximum leaf speed was 2.5 cm/sec with a maximum gantry speed of 6°/sec, arc control points every 2°. Plans consisted of two full coplanar arcs, collimator 30° clockwise and 330° counter-clockwise. Collimator jaw tracking was used for each plan. Dose was prescribed to the median target dose with criteria according to ICRU83 [28]. For the level 1 plans this was PTV\_Low and for dose levels (2–5) PTV\_High. Plans were not actively optimised to control dose from PTV\_High into PTV\_Low, with ‘dose spill’ allowed. This was deemed beneficial due to differential motion of the targets and the absence of a CTV for PTV\_High. Optimisation objectives for PTV and OAR are detailed in Supplementary Table 1.

### Planning aims and optimisation

For each test patient, five treatment plans were produced; a 25 Gy/5# plan (level 1) and at each of the 2.5 Gy incremental dose levels (2–5) to the SIB volume PTV\_High. The dose prescribed to PTV\_Low was 25 Gy/5# for level 1 and PTV\_High in dose levels (2–5) was prescribed 27.5 Gy/5#, 30 Gy/5#, 32.5Gy/5# and 35 Gy/5# respectively (Fig. 1).

All plans were optimised within Eclipse™ optimization workspace where objectives were manually defined. Optimisation objectives were applied to generate dose volume histogram (DVH) estimates. PTV objectives took priority (100%) over OAR to ensure optimal PTV coverage.



**Fig. 1.** Example of study patient planning CT showing dose colour wash at baseline 25 Gy/5# (level 1) and dose levels 2–5 (27.5 Gy, 30 Gy, 32.5 Gy and 35 Gy) with increasing dose to PTV\_High.

The bowel and bladder were assigned priorities of 60% and 40% respectively. Given that femoral heads receive minimal dose, these were not assigned specific objectives. Following evaluation, PTV or OAR parameters were modified if necessary to achieve the optimal plan. Plans were not re-normalised.

#### Plan evaluation

Individual plan dose distributions were assessed by a CO to confirm clinical acceptability and dose-volume parameters were compared. Plan acceptability was defined as clinically acceptable, minor where optimal constraints were exceeded and major where mandatory constraints were exceeded. Feasibility was defined as 90% of plans achieving the planning objectives at 32.5 Gy dose level 4 (EqD2 53.4 Gy). Each of the five plans were quantitatively compared, using DVH analysis of the PTV and OAR objectives (Supplementary Table 1.).

#### CBCT imaging evaluation

Study patient's 3D cone-beam CT (CBCT) images were available for all patients, previously treated with 25 Gy/5#. Patients planning CT were retrospectively registered to daily CBCT images using a standardised region of interest by a radiation therapist. The study structure set was used to verify anatomical coverage on each CBCT. Visually assessed by checking if the CTV was encompassed by the PTV\_Low and the GTV by PTV\_High. To determine if delivery of the dose escalated plans was feasible, CBCT images were categorised as acceptable coverage, a partial miss or geographical miss by a CO.

#### Plan quality metrics

Quality indices were used to assess PTV\_High and PTV\_Low for all plans. The conformity index ( $CI_{RTOG}$ ) assesses the target volume coverage and normal tissue sparing. In this study, the CI was calculated using the formula  $CI = \text{Volume of reference isodose} / \text{target volume}$  [29]. The homogeneity index (HI) analyses the uniformity of the dose distribution in the target volume and was calculated using formula  $HI = D5\% / D95\%$  [30]. Results closest to 1 represent optimal conformality and homogenous dose. Finally, the dose fall off index (DFI) assesses the high-dose fall-off (107% of prescribed dose) from PTV\_High into PTV\_Low. DFI was calculated for the PTV\_High (SIB) volume using the formula  $DFI = \text{Volume of 107\%/target volume}$ , adapted from RTOG915 [31]. DFI was calculated for PTV\_High, PTV\_High + 5 mm margin and PTV\_High + 10 mm margin.

Plan deliverability was assessed via pre-treatment quality assurance (QA) measurements across all plans. Planned doses were delivered by a

Varian TrueBeam™ linear accelerator, compared to delivered doses using phantom MapCheck2 with 2D global gamma-analysis criteria of 3%/3mm. Deliverability and plan complexity was assessed using the dose-rate and gantry speed for each control point. RadCalc v6.3 independently checked monitor units (MU) alongside plan complexity parameters Average Leaf Pair Openings (ALPO) and Modulation Factors (MF).

#### Statistical analysis

We summarised continuous variables as means (standard deviations) or as medians (inter-quartile ranges). Counts of plans achieving mandatory and optimal constraints were recorded. Dose metrics were extracted from DVH's for all plans, exported in 0.05 Gy resolution from Eclipse v15.5 (Varian Medical Systems, Palo Alto, CA). Statistical analysis was performed using Stata v14.

#### Results

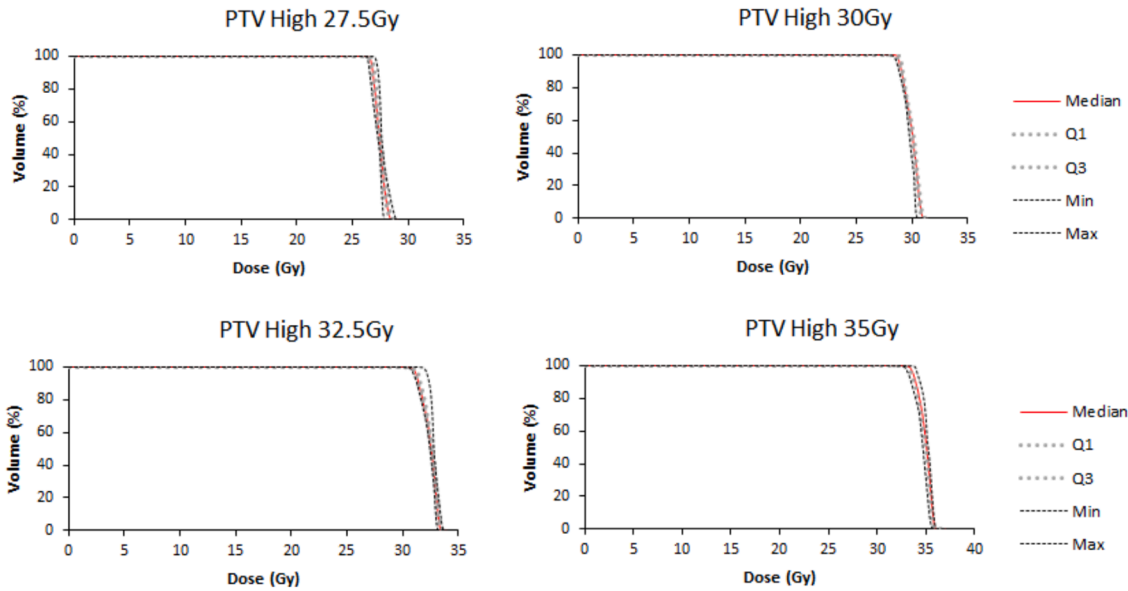
Twenty patients were included in the analysis, patient characteristics and structure volumes are reported in Table 1. One hundred treatment plans were analysed.

All plans (100%) achieved the planning objectives at the 25 Gy/5# (level 1) and each of the increasing dose levels 2–5. Dose metrics were generally consistent across the dose levels (Supplementary Table 2). Fig. 2 shows population DVH for PTV\_Low and PTV\_High with DVH for all other structures in Supplementary Fig. 1. For the PTV\_Low D50%, all plans achieved the mandatory constraint resulting in zero major deviations. The optimal constraint was exceeded by 7 plans (7%) categorised as minor deviations (30 Gy n = 1, 32.5 Gy n = 2, 35 Gy n = 4), for 4/20 patients (Fig. 3).

Minimal increase in OAR dose across all dose levels was observed. Population DVH's for small bowel, bladder, large bowel, right and left femoral heads can be found in supplementary Fig. 1. For large bowel, mean  $D_{1cc}$  for 32.5 Gy and 35 Gy plans were 27.0 Gy (SD 414.9), 29.2 Gy (SD 308.9) and for  $D_{0.5cc}$  was 27.8.6 Gy (SD 395.4) and 30.2 Gy (SD 270.7) respectively. The  $D_{1cc}$  was exceeded in only 1 plan (5%) at 32.5 Gy and 7 plans (35%) at 35 Gy. The  $D_{0.5cc}$  was exceeded in 4 plans (20%) at 32.5 Gy and 4 plans (20%) at 35 Gy. As plans were not optimised with this constraint, these were deemed to be minimal breaches with a maximum value of 1.5 Gy.

CO plan evaluation of daily CBCT (n = 100) defined coverage of the target volumes as acceptable for 84 fractions (84%), partial miss for 11 fractions (11%) and geographical miss for 5 fractions (5%). Per patient occurring for 12/20, 7/20 and 1/20 respectively. Observed reasons for poor target coverage were due to patient position or poor bladder/rectal

a)



b)

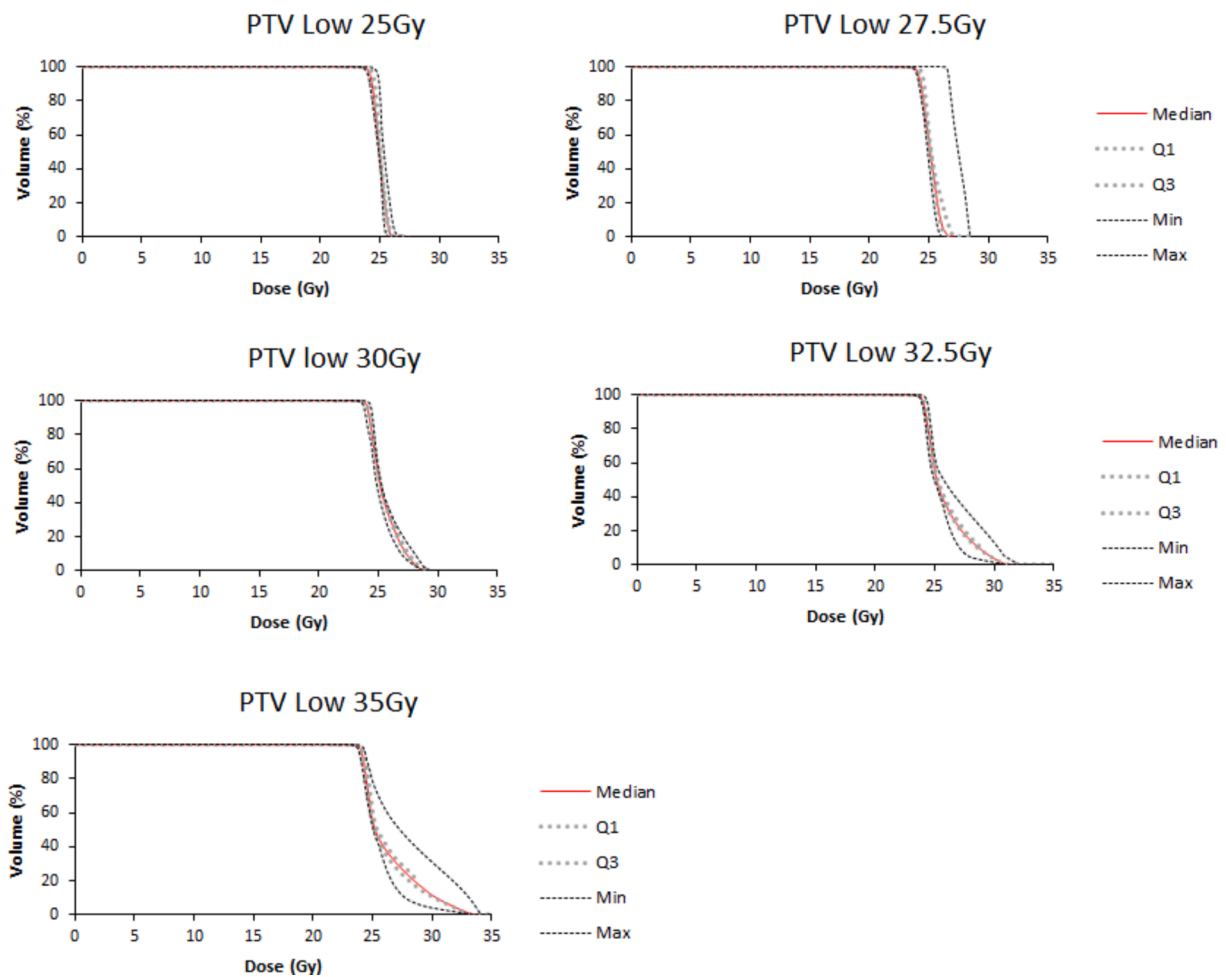
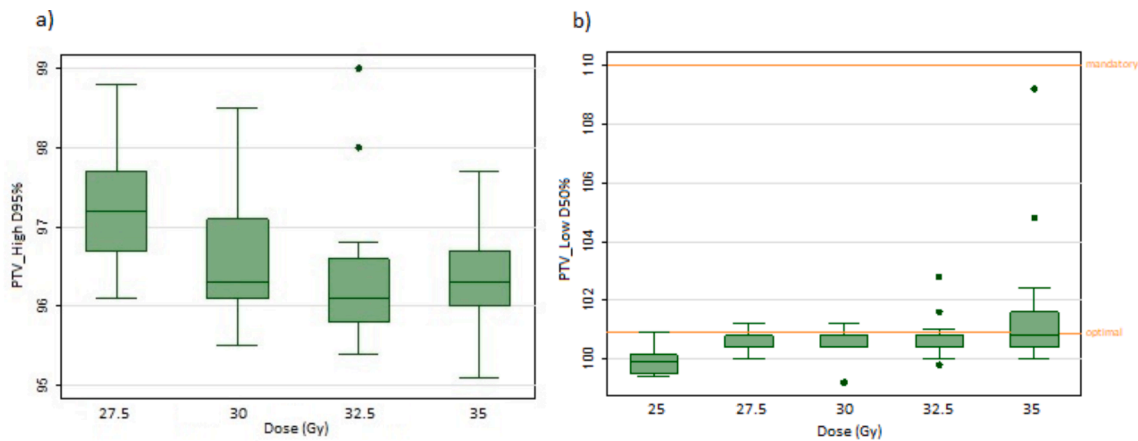


Fig. 2. Population dose volume histograms for (a) PTV\_High and (b) PTV\_Low showing the median, interquartile range and min and max values.





**Fig. 3.** Boxplots showing dose constraints at dose levels (27.5 Gy, 30 Gy, 32.5 Gy and 35 Gy) for structures (a) PTV\_high D95% > 95% and (b) PTV\_low D50% = 99–101% (mandatory < 110). The band represents the median value, the box the first and third quartile. The whiskers show variation above and below this with outliers as dots.

preparation on planning CT/CBCT.

The mean CI and HI is shown in Fig. 4. HI was consistent across all dose levels representing homogenous dose, increasing for PTV\_Low at 35 Gy (level 5) due to dose spill from PTV\_High. The CI for PTV\_High was highest at 27.5 Gy (level 2), due to the small difference of 2.5 Gy dose between PTV\_Low and PTV\_High. Results for DFI analysis of PTV\_High show the fall off from PTV\_High into PTV\_Low to be gradual. There was a reduction in 107% dose at the 5 mm boundary of 40.6%, 41.6%, 41.5%, 41.5% and at 10 mm of 63.2%, 63.7%, 63.5% and 63.5%. At 10 mm there was minimal 107% dose, an expected effect due to allowing dose spill during optimisation. Found to be within 1% across all dose levels.

Plan complexity was assessed using the metrics shown in Supplementary Table 3. The mean ALPO decreases and indicates greater plan complexity. The MF factor remains relatively unchanged and indicates similar MLC modulation across all 5 dose level plans. The greater plan complexity is due to the increase in total MU, increase in average dose-rate and decrease in average gantry speed. Patient-specific QA

performed for each plan suggests all plans were comparable in terms of plan calculation accuracy and deliverability.

**Discussion**

Here we define *in-silico* feasibility of dose escalation to the primary tumour up to 35 Gy/5# in SCRT for rectal cancer. We found 100% of plans met our mandatory planning objectives at all dose levels up to 35 Gy. Our results demonstrate the feasibility of hypofractionated dose escalation, with all plans achieving the planning objectives up to 32.5 Gy (EqD2 53.4 Gy), the pre-defined study threshold.

To our knowledge this is the first *in-silico* study investigating dose escalation up to 35 Gy in SCRT for rectal cancer using a VMAT technique with a SIB volume.

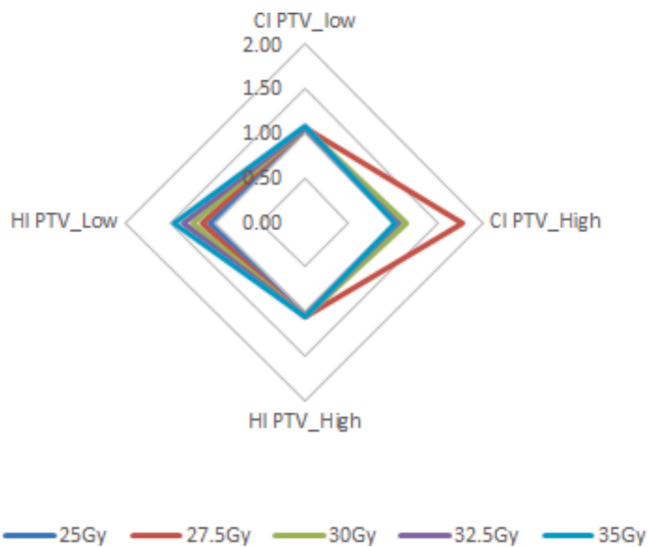
VMAT is documented to be the best technique for SIB planning whilst sparing dose to OAR in LCCRT [32–34]. Our technique uses two arcs, shown to be advantageous, due to target complexity requirements to achieve optimum dose distributions [32].

Automated planning (AP) solutions such as RapidPlan have shown benefit in OAR sparing whilst planning SIB volumes in LCCRT [35]. Our results show planning objectives can be achieved with manual optimisation, where mandatory dose objectives were met. On an individual level, some cases failed optimal objectives at the higher dose levels. We plan to build a RapidPlan model using the 100 study plans to investigate if AP would further improve dose metrics for SCRT dose escalation.

Our optimisation process did not actively control dose, that is, we allowed dose to spill from PTV\_High into PTV\_Low. Due to the absence of a CTV at the SIB volume this was a desired effect, utilising the gradual dose fall off. In rectal cancer this is beneficial for feasibility of treatment delivery.

The patient’s in our study represent a range of disease staging and tumour locations in the rectum. Our study was retrospective, therefore we did not optimise patient preparation specifically for this technique. We observed a wide range of bladder volumes, the varying presence of rectal filing/gas, with no limits set on rectal diameter. Prospective protocols would mitigate these issues to ensure planning and treatment image suitability, reduce incidences of partial miss which was 11% in our CBCT analysis. We observe GTV would have been encompassed by the gradual dose fall off. Only one patient was considered a geographical miss and in clinical practice a repeat optimised planning CT scan would have been performed. This study thus represents a ‘worst case’ scenario.

Visualisation of soft tissue on CBCT is poor for rectum. Nevertheless, on all daily CBCT images it was possible to assess coverage of GTV with PTV\_High. The described technique, where the GTV includes the rectal lumen and not only tumour, is advantageous. CBCT was sufficient to



**Fig. 4.** Radar diagram showing the mean HI for PTV\_Low and PTV\_High. The HI for PTV\_Low increases up the dose levels due to the effect of dose spill from PTV\_High into PTV\_Low. The CI value is greatest for the 27.5 Gy (dose level 2) due to the small dose increase from PTV\_Low at 25 Gy and the SIB volume being 27.5 Gy (values closest to 1 represent ideal conformity and homogenous dose).

visualise rectal wall in all directions and to differentiate from close by structures. Improving the localisation of the tumour on CBCT to guide online decision making may allow further refinement and margin reduction [36]. Radiopaque marker insertion in rectal cancer radiotherapy has been shown to be safe and feasible [37], an approach that may work best in SCRT where treatment delivery is over five days with less tumour regression or migration.

The rectum has known motion, found to be greatest in the upper/mid sections and less in the lower section [38]. Safe delivery of this technique requires minimal intrafraction rectal motion, essential when delivering a high dose per fraction using a SIB volume [34]. The advantage of this technique over a sequential or concomitant boost is that the SIB utilises the dose distribution that VMAT planning offers. Therefore, implementation requires considerations to ensure safe delivery, with image guided radiotherapy strategies in line with stereotactic ablative radiotherapy techniques [27].

Dose escalation in SCRT could improve pCR response rates, increase surgical avoidance for patients and reduce morbidity. Toxicity has been found to be similar with doses greater than 60 Gy and greater pCR response rates [21]. The risk of small bowel toxicity appears to be the greatest concern in dose escalation from LCCRT studies [39]. VMAT planning has been shown to have less toxicity in comparison to fixed IMRT fields [40]. However, the effects of acute and late toxicity of hypofractionated dose escalation for rectal cancer are relatively unknown. Our analysis did not consider surrounding organs anal canal or genitalia due to the absence of published equivalent constraints for late toxicity [27]. Dose to anal canal may be important in the organ preservation setting where maintaining bowel function is vital. To establish the safety of hypofractionated dose escalation in rectal cancer we are developing a prospective phase 1 study. Patient reported outcome measures will be collected to establish dose effects on bowel function and QOL.

Currently an ongoing Phase 1 study in China [41] investigates this approach for rectal cancer, using higher doses (30 Gy/5#, 35 Gy/5# and 40 Gy/5#) [42]. The highest proposed dose of 40 Gy/5# would result in a very high biological dose if the  $\alpha/\beta$  ratio proves to be moderate (EqD2  $\alpha/\beta = 74.3$  Gy). This is higher than the estimated dose response range for rectal cancers and may be unnecessarily overdosing the tumours [19].

This manuscript has been prepared in accordance with the radiotherapy treatment planning study guidelines (RATING) framework, achieving a score of 95% [43].

## Conclusion

Hypofractionated dose escalation to the primary tumour up to 35 Gy/5# is feasible in SCRT for rectal cancer. All plans met our *a priori* definition of feasibility at 32.5 Gy (EqD2 53.4 Gy). Safety and feasibility of this technique will be investigated in a Phase 1 clinical trial.

## Funding

Funding for research post held by LD is provided by the Beatson Cancer Charity and by CRUK RadNet Glasgow (C16583/A28803).

LG funding is provided by CRUK RadNet Glasgow (C16583/A28803).

SMO'C is a CRUK funded clinical senior lecturer at the Institute of Cancer Sciences (grant number CAN-RES-UK (C7932/A25142)).

AD funding is provided by the Beatson Cancer Charity.

Funding for statistical support from PM was provided by the Beatson Cancer Charity.

## Declaration of Competing Interest

The authors declare that they have no known competing financial interests or personal relationships that could have appeared to influence

the work reported in this paper.

## Acknowledgment

We would like to acknowledge funders The Beatson Cancer Charity and CRUK. Thank you to Paul Cornelius for his support with this project.

## Appendix A. Supplementary data

Supplementary data to this article can be found online at <https://doi.org/10.1016/j.ctro.2022.06.003>.

## References

- [1] Glynne-Jones R, Wyrwicz L, Tiret E, Brown G, Rödel C, Cervantes A, et al. Rectal cancer: ESMO Clinical Practice Guidelines for diagnosis, treatment and follow-up. *Ann Oncol* 2017;28:22–40. <https://doi.org/10.1093/annonc/mdx224>.
- [2] Bosses J-F, Collette L, Calais G, Mineur L, Maingon P, Radosevic-Jelic L, et al. Chemotherapy with Preoperative Radiotherapy in Rectal Cancer. *N Engl J Med* 2006;355:1114–23. <https://doi.org/10.1056/NEJMoa060829>.
- [3] Gérard J-P, Conroy T, Bonnetain F, Bouché O, Chapet O, Closon-Dejardin M-T, et al. Preoperative Radiotherapy With or Without Concurrent Fluorouracil and Leucovorin in T3–4 Rectal Cancers: Results of FFC9203. *J Clin Oncol* 2006;24:4620–5. <https://doi.org/10.1200/JCO.2006.06.7629>.
- [4] Improved Survival with Preoperative Radiotherapy in Resectable Rectal Cancer. *N Engl J Med*. 1997;336:980–7. Doi: 10.1056/NEJM199704033361402.
- [5] Kapiteijn E, Marijnen CAM, Nagtegaal ID, Putter H, Steup WH, Wiggers T, et al. Preoperative Radiotherapy Combined with Total Mesorectal Excision for Resectable Rectal Cancer. *N Engl J Med* 2001;345(9):638–46. <https://www.nejm.org/doi/full/10.1056/NEJMoa010580>.
- [6] Ngan SY, Burmeister B, Fisher RJ, Solomon M, Goldstein D, Joseph D, et al. Randomized Trial of Short-Course Radiotherapy Versus Long-Course Chemoradiation Comparing Rates of Local Recurrence in Patients With T3 Rectal Cancer: Trans-Tasman Radiation Oncology Group Trial 01.04. *J Clin Oncol* 2012;30:3827–33. <https://doi.org/10.1200/JCO.2012.42.9597>.
- [7] Kane C, Glynne-Jones R. Should we favour the use of 5 × 5 preoperative radiation in rectal cancer. *Cancer Treat Rev* 2019;81:101908. <https://doi.org/10.1016/j.ctrv.2019.101908>.
- [8] Mowery YM, Salama JK, Zafar SY, Moore HG, Willett CG, Czito BG, et al. Neoadjuvant long-course chemoradiation remains strongly favored over short-course radiotherapy by radiation oncologists in the United States. *Cancer* 2017;123:1434–41. <https://doi.org/10.1002/cncr.30461>.
- [9] Abdel-Rahman O, Elhalawani HM, Allen PK, Holliday EB. Utilization of short-course radiation therapy for patients with nonmetastatic rectal adenocarcinoma in the United States. *Adv Radiat Oncol* 2018;3:611–20. <https://doi.org/10.1016/j.adro.2018.07.007>.
- [10] Erlandsson J, Holm T, Pettersson D, Berglund Å, Cedermark B, Radu C, et al. Optimal fractionation of preoperative radiotherapy and timing to surgery for rectal cancer (Stockholm III): a multicentre, randomised, non-blinded, phase 3, non-inferiority trial. *Lancet Oncol* 2017;18:336–46. [https://doi.org/10.1016/S1470-2045\(17\)30086-4](https://doi.org/10.1016/S1470-2045(17)30086-4).
- [11] Bahadoer RR, Dijkstra EA, van Etten B, Marijnen CAM, Putter H, Kranenbarg E-M-K, et al. Short-course radiotherapy followed by chemotherapy before total mesorectal excision (TME) versus preoperative chemoradiotherapy, TME, and optional adjuvant chemotherapy in locally advanced rectal cancer (RAPIDO): a randomised, open-label, phase 3 trial. *Lancet Oncol* 2021;22:29–42. [https://doi.org/10.1016/S1470-2045\(20\)30555-6](https://doi.org/10.1016/S1470-2045(20)30555-6).
- [12] Bujko K, Wyrwicz L, Rutkowski A, Malinowska M, Pietrzak L, Kryński J, et al. Long-course oxaliplatin-based preoperative chemoradiation versus 5 × 5 Gy and consolidation chemotherapy for cT4 or fixed cT3 rectal cancer: results of a randomized phase III study. *Ann Oncol* 2016;27:834–42. <https://doi.org/10.1093/annonc/mdw062>.
- [13] Hanly P, Céilleachair AÓ, Skally M, O'Neill C, Sharp L. Direct costs of radiotherapy for rectal cancer: a microcosting study. *BMC Health Serv Res* 2015;15:184. <https://doi.org/10.1186/s12913-015-0845-9>.
- [14] Raldow AC, Chen AB, Russell M, Lee PP, Hong TS, Ryan DP, et al. Cost-effectiveness of Short-Course Radiation Therapy vs Long-Course Chemoradiation for Locally Advanced Rectal Cancer. *JAMA Netw Open* 2019;2:192249. <https://doi.org/10.1001/jamanetworkopen.2019.2249>.
- [15] Wang S, Wen F, Zhang P, Wang X, Li Q. Cost-effectiveness analysis of long-course oxaliplatin and bolus of fluorouracil based preoperative chemoradiotherapy vs. 5x5Gy radiation plus FOLFOX4 for locally advanced resectable rectal cancer. *Radiat Oncol* 2019;14:1113. <https://doi.org/10.1186/s13014-019-1319-8>.
- [16] Moore A, Den RB, Gordon N, Sarfaty M, Kundel Y, Brenner B, et al. The Financial Impact of Fractionation Scheme and Treatment Planning Method for Rectal Cancer in the United States. *Clin Colorectal Cancer* 2019;18:209–17. <https://doi.org/10.1016/j.clcc.2019.05.005>.
- [17] Fowler JF. The linear-quadratic formula and progress in fractionated radiotherapy. *Br J Radiol* 1989;62:679–94. <https://doi.org/10.1259/0007-1285-62-740-679>.
- [18] Swinski R, Wzietek I, Tarnawski R, Namysl-Kaletka A, Kryj M, Chmielarz A, et al. Moderately Low Alpha/Beta Ratio for Rectal Cancer May Best Explain the Outcome

- of Three Fractionation Schedules of Preoperative Radiotherapy. *Int J Radiat Oncol* 2007;69:793–9. <https://doi.org/10.1016/j.ijrobp.2007.03.046>.
- [19] Appelt AL, Pløen J, Vogelius IR, Bentzen SM, Jakobsen A. Radiation Dose-Response Model for Locally Advanced Rectal Cancer After Preoperative Chemoradiation Therapy. *Int J Radiat Oncol Biol Phys* 2013;85:74–80. <https://doi.org/10.1016/j.ijrobp.2012.05.017>.
- [20] Couwenberg A, Burbach J, Berbee M, Lacle M, Arensman R, Raicu M, et al. (2020). Efficacy of dose-escalated chemoradiation on complete tumor response in patients with locally advanced rectal cancer (RECTAL-BOOST): a phase 2 randomized controlled trial. *Int J Radiat Oncol Biol Phys*. 2020;108(4):1008-1018. 10.1038/s41571-021-00538-5.
- [21] Hearn N, Atwell D, Cahill K, Elks J, Vignarajah D, Lagopoulos J, et al. Neoadjuvant radiotherapy dose escalation in locally advanced rectal cancer: A systematic review and meta-analysis of modern treatment approaches and outcomes. *Clin Oncol* 2021;33(1):1–14. <https://doi.org/10.1016/j.clon.2020.06.008>.
- [22] Fokas E, Appelt A, Glynn-Jones R, Beets G, Perez R, Garcia-Aguilar J, et al. International consensus recommendations on key outcome measures for organ preservation after (chemo) radiotherapy in patients with rectal cancer. *Nat Rev Clin Oncol* 2021 Dec;18(12):805–16. <https://doi.org/10.1038/s41571-021-00538-5>.
- [23] National rectal cancer intensity-modulated radiotherapy (IMRT) guidance. The Royal College of Radiologists. <https://www.rcr.ac.uk/publication/national-rectal-cancer-intensity-modulated-radiotherapy-imrt-guidance> (accessed August 13, 2021).
- [24] Devlin L, Marshall G, O’Cathail S, Chemu H, McLoone P, Smith A, et al. PH-0434 RTT verification of margin reduction strategy in rectal cancer short course radiotherapy. *Radiother Oncol* 2021;161:334–5. [https://doi.org/10.1016/S0167-8140\(21\)07325-4](https://doi.org/10.1016/S0167-8140(21)07325-4).
- [25] Devlin L, Hunter B, Chemu H, McLoone P, Valentine R, Cornelius P, et al. OC-0648 Dose escalation is feasible in short course radiotherapy of rectal cancer—a planning study. *Radiother and Oncol* 2021;2021(161):516–7. [https://doi.org/10.1016/S0167-8140\(21\)07004-3](https://doi.org/10.1016/S0167-8140(21)07004-3).
- [26] Gay HA, Barthold HJ, O’Meara E, Bosch WR, El Naqa I, Al-Lozi R, et al. Pelvic Normal Tissue Contouring Guidelines for Radiation Therapy: A Radiation Therapy Oncology Group Consensus Panel Atlas. *Int J Radiat Oncol Biol Phys* 2012;83:353–62. <https://doi.org/10.1016/j.ijrobp.2012.01.023>.
- [27] Stereotactic Ablative Body Radiotherapy (SBRT): A Resource. 2019. Available from: <https://www.sabr.org.uk/wp-content/uploads/2019/04/SABRconsortium-guidelines-2019-v6.1.0.pdf>.
- [28] ICRU (2010) International Commission on Radiation Units and Measurements. Prescribing, recording, and reporting photon beam intensity modulated radiotherapy (IMRT). ICRU Report 83, J. ICRU 10 (1), Oxford University Press, Oxford.
- [29] Shaw E, Scott C, Souhami L, Dinapoli R, Kline R, Loeffler J, et al. Single dose radiosurgical treatment of recurrent previously irradiated primary brain tumors and brain metastases: final report of RTOG protocol 90–05. *Int J Radiat Oncol Biol Phys* 2000;47(2):291–8. [https://doi.org/10.1016/S0360-3016\(99\)00507-6](https://doi.org/10.1016/S0360-3016(99)00507-6).
- [30] Weiss E, Siebers JV, Keall PJ. An analysis of 6-MV versus 18-MV photon energy plans for intensity-modulated radiation therapy (IMRT) of lung cancer. *Radiother Oncol* 2007;82(1):55–62. <https://doi.org/10.1016/j.radonc.2006.10.021>.
- [31] Videtic GM, Hu C, Singh AK, Chang JY, Parker W, Olivier KR, et al. NRG Oncology RTOG 0915 (NCCTG N0927): a randomized phase II study comparing 2 stereotactic body radiation therapy (SBRT) schedules for medically inoperable patients with stage I peripheral non-small cell lung cancer. *Int J Radiat Oncol Biol Phys*. 2015;93(4):757. <https://dx.doi.org/10.1016%2Fj.ijrobp.2015.07.2260>.
- [32] Cilla S, Caravatta L, Picardi V, Sabatino D, Macchia G, Digesù C, et al. Volumetric modulated arc therapy with simultaneous integrated boost for locally advanced rectal cancer. *Clin Oncol* 2012;24(4):261–8. <https://doi.org/10.1016/j.clon.2011.07.001>.
- [33] Bakkal BH, & Elmas O. Dosimetric comparison of organs at risk in 5 different radiotherapy plans in patients with preoperatively irradiated rectal cancer. *Medicine*. 2021;100(1). <https://dx.doi.org/10.1097%2FMD.00000000000024266>.
- [34] Amaoui B, Mouhssine D, Bouih N, Bouih A, Tachfine S, Tamri H, et al. VMAT dosimetric study in rectal cancer patients. *Int Res J Med Biomed* 2020;5(1):1–6. <https://doi.org/10.15739/irjmb.20.001>.
- [35] Wu H, Jiang F, Yue H, Li S, Zhang Y. A dosimetric evaluation of knowledge-based VMAT planning with simultaneous integrated boosting for rectal cancer patients. *J Appl Clin Med Phys* 2016;17(6):78–85. <https://doi.org/10.1120/jacmp.v17i6.6410>.
- [36] Gani C, Russo ML, Boeke S, Wegener D, Gatidis S, Butzer S, et al. A novel approach for radiotherapy dose escalation in rectal cancer using online MR-guidance and rectal ultrasound gel filling—Rationale and first in human. *Radiother Oncol* 2021;164:37–42. <https://doi.org/10.1016/j.radonc.2021.09.002>.
- [37] Berbée M, Opbroek T, Paulissen J, Houben R, Van Limbergen E, Ta B, et al. PO-1793: BioXmark liquid fiducials to enable radiotherapy tumor boosting in rectal cancer feasibility trial. *Radiother Oncol* 2020;152:1000–1. [https://doi.org/10.1016/S0167-8140\(21\)01811-9](https://doi.org/10.1016/S0167-8140(21)01811-9).
- [38] Chong I, Hawkins M, Hansen V, Thomas K, McNeil H, O’Neill B, et al. Quantification of Organ Motion During Chemoradiotherapy of Rectal Cancer Using Cone-Beam Computed Tomography. *Int J Radiat Oncol Biol Phys* 2011;81(4):2011. <https://doi.org/10.1016/j.ijrobp.2011.04.060>.
- [39] Holyoake DL, Partridge M, Hawkins MA. Systematic review and meta-analysis of small bowel dose–volume and acute toxicity in conventionally-fractionated rectal cancer radiotherapy. *Radiother Oncol* 2019;138:38–44. <https://doi.org/10.1016/j.radonc.2019.05.001>.
- [40] Dröge LH, Weber HE, Guhlich M, Leu M, Conradi LC, Gaedcke J, et al. Reduced toxicity in the treatment of locally advanced rectal cancer: a comparison of volumetric modulated arc therapy and 3D conformal radiotherapy. *BMC cancer* 2015;15(1):1–8. <https://doi.org/10.1186/s12885-015-1812-x>.
- [41] Short-course Radiotherapy (5×6Gy/7Gy/8Gy) Followed by Neo-adjuvant Chemotherapy for Locally Advanced Rectal Cancer - <https://clinicaltrials.gov/show/NCT03466424>.
- [42] Zhang MX, Li XB, Guan BJ, Guan GX, Lin XY, Wu XD, et al. Dose escalation of preoperative short-course radiotherapy followed by neoadjuvant chemotherapy in locally advanced rectal cancer: protocol for an open-label, single-centre, phase I clinical trial. *BMJ open* 2019;9(3):025944. <https://doi.org/10.1136/bmjopen-2018-025944>.
- [43] Hansen CR, Crijns W, Hussein M, Rossi L, Gallego P, Verbakel W, et al. Radiotherapy Treatment planning study Guidelines (RATING): A framework for setting up and reporting on scientific treatment planning studies. *Radiother Oncol* 2020;153:67–78. <https://doi.org/10.1016/j.radonc.2020.09.033>.