

# Dissociating Memory Networks in Early Alzheimer's Disease and Frontotemporal Lobar Degeneration - A Combined Study of Hypometabolism and Atrophy

Stefan Frisch<sup>1,2\*</sup>, Juergen Dukart<sup>2,3,6</sup>, Barbara Vogt<sup>2</sup>, Annette Horstmann<sup>2</sup>, Georg Becker<sup>4</sup>, Arno Villringer<sup>2,5,6</sup>, Henryk Barthel<sup>4</sup>, Osama Sabri<sup>4,6</sup>, Karsten Müller<sup>2</sup>, Matthias L. Schroeter<sup>2,5,6,7</sup>

**1** Department of Neurology, J. W. Goethe University, Frankfurt/Main, Germany, **2** Max-Planck-Institute for Human Cognitive and Brain Sciences, Leipzig, Germany, **3** LREN, Département des Neurosciences Cliniques, CHUV, Lausanne, Switzerland, **4** Department of Nuclear Medicine, University of Leipzig, Leipzig, Germany, **5** Day Clinic of Cognitive Neurology, University of Leipzig, Leipzig, Germany, **6** LIFE - Leipzig Research Center for Civilization Diseases, University of Leipzig, Germany, **7** German FTLD Consortium, Germany

## Abstract

**Introduction:** We aimed at dissociating the neural correlates of memory disorders in Alzheimer's disease (AD) and frontotemporal lobar degeneration (FTLD).

**Methods:** We included patients with AD (n = 19, 11 female, mean age 61 years) and FTLD (n = 11, 5 female, mean age 61 years) in early stages of their diseases. Memory performance was assessed by means of verbal and visual memory subtests from the Wechsler Memory Scale (WMS-R), including forgetting rates. Brain glucose utilization was measured by [<sup>18</sup>F]fluorodeoxyglucose positron emission tomography (FDG-PET) and brain atrophy by voxel-based morphometry (VBM) of T1-weighted magnetic resonance imaging (MRI) scans. Using a whole brain approach, correlations between test performance and imaging data were computed separately in each dementia group, including a group of control subjects (n = 13, 6 female, mean age 54 years) in both analyses. The three groups did not differ with respect to education and gender.

**Results:** Patients in both dementia groups generally performed worse than controls, but AD and FTLD patients did not differ from each other in any of the test parameters. However, memory performance was associated with different brain regions in the patient groups, with respect to both hypometabolism and atrophy: Whereas in AD patients test performance was mainly correlated with changes in the parieto-mesial cortex, performance in FTLD patients was correlated with changes in frontal cortical as well as subcortical regions. There were practically no overlapping regions associated with memory disorders in AD and FTLD as revealed by a conjunction analysis.

**Conclusion:** Memory test performance may not distinguish between both dementia syndromes. In clinical practice, this may lead to misdiagnosis of FTLD patients with poor memory performance. Nevertheless, memory problems are associated with almost completely different neural correlates in both dementia syndromes. Obviously, memory functions are carried out by distributed networks which break down in brain degeneration.

**Citation:** Frisch S, Dukart J, Vogt B, Horstmann A, Becker G, et al. (2013) Dissociating Memory Networks in Early Alzheimer's Disease and Frontotemporal Lobar Degeneration - A Combined Study of Hypometabolism and Atrophy. PLoS ONE 8(2): e55251. doi:10.1371/journal.pone.0055251

**Editor:** Kewei Chen, Banner Alzheimer's Institute, United States of America

**Received:** July 4, 2012; **Accepted:** December 27, 2012; **Published:** February 14, 2013

**Copyright:** © 2013 Frisch et al. This is an open-access article distributed under the terms of the Creative Commons Attribution License, which permits unrestricted use, distribution, and reproduction in any medium, provided the original author and source are credited.

**Funding:** This study has been supported by LIFE - Leipzig Research Center for Civilization Diseases at the University of Leipzig - funded by the European Union, European Regional Development Fund and by the Free State of Saxony within the framework of the excellence initiative (AV, OS and MLS) and by the German Consortium for Frontotemporal Lobar Degeneration, funded by the German Federal Ministry of Education and Research (MLS). The funders had no role in study design, data collection and analysis, decision to publish, or preparation of the manuscript.

**Competing Interests:** The authors have declared that no competing interests exist.

\* E-mail: stefan.frisch@kgu.de

## Introduction

Memory problems are the most frequent complaint by patients presenting for clinical assessment when dementia is suspected. Although disorders of memory have been defined as a necessary criterion in the diagnosis of dementing illness (ICD-10; DSM-III), these definitions have largely been based on the most frequent dementia syndrome - Alzheimer's disease (AD). Memory impairments have been claimed to play a subordinate role in other forms of neurodegenerative disorders, such as frontotemporal lobar

degeneration (FTLD). Here, memory has been assumed to remain largely intact at least in early stages of the disease [1,2] in contrast to other cognitive domains such as behavioral abnormalities, executive and language deficits, depending on the subtype [3–5]. The finding that AD patients face more problems in anterograde episodic memory than FTLD patients has been confirmed in several studies [6–13], although there is accumulating evidence that memory can be remarkably impaired even in early stages of FTLD [14–17]. One explanation of this latter finding is that temporo-mesial/hippocampal atrophy is also found in FTLD,

though more asymmetric (left>right) than with AD [18–22]. Accordingly, it has been claimed that FTLD cannot be clearly distinguished from AD on the basis of memory test performance [23–27], at least not on the individual level relevant for diagnostic classification [28]. Additionally, methodological issues such as differences in lesion patterns, verification of diagnosis, different test measures etc. further complicate the comparison of studies [29,30]. With respect to the nature of their memory problems, FTLD patients were supposed to show more ‘frontal’ deficits such as problems in organizing material that is to be learned [8,11,29,31] or in retrieving information rather than storing it [11,12,24,29]. By contrast, AD patients have been claimed to exhibit stronger consolidation problems as they seem to lose more information over time [11,24]. Other studies have shown stronger visual memory problems in AD patients probably due to additional visuo-spatial problems which cannot be compensated for by verbal memory strategies [14,18].

Furthermore, a number of studies have related memory performance in dementia patients directly to the lesion patterns as revealed by imaging techniques –such as Magnetic Resonance Imaging (MRI) and [18F] FluoroDeoxyGlucose Positron Emission Tomography (FDG-PET)- in order to explain variability across studies. AD leads to atrophy and/or hypometabolism in temporomesial [32–35] as well as parieto-mesial areas [35–39] as early signs of the disease. Accordingly, several studies (e.g. [40,41]) have shown that in patients with amnesic mild cognitive impairment (aMCI), a prestage of AD, deficits in word list encoding and retrieval correlate with hippocampal atrophy as well as with hippocampal and parieto-medial hypometabolism (precuneus, posterior cingulate). Correlations of memory deficits and hippocampal atrophy in AD have been confirmed in several studies [42–44]. Using Single-photon Emission Computed Tomography (SPECT), Caroli and colleagues [45] found that hypoperfusion in the retrosplenial cortex and precuneus was associated with memory impairment, but that only hippocampal hypoperfusion predicted a conversion of MCI to AD. Desgranges and colleagues [46,47] found correlations between lower performance in verbal memory (word list, story recall) and PET hypometabolism in the temporo-medial cortex, thalamus, cingulate and parieto-medial areas, but also in lateral temporal, parietal and frontal cortices in AD patients (see also ref [39]). Furthermore, it has been shown that hippocampal hypometabolism affects the recall of (at least recent) episodes from autobiographical memory in AD [48].

By contrast, there are only very few studies investigating the relationship between hypometabolism and/or atrophy and memory functions in patients with FTLD. In semantic dementia, hypometabolism and atrophy are found especially in left lateral temporal areas [20,22,49,50], but also in the hippocampus [50,51] suggesting that memory is more severely affected than previously assumed (see above). As shown in a further study [52], frontal-variant FTLD patients (‘frontotemporal dementia’ according to [1]) had difficulties in retrieving autobiographical memories compared to control subjects (see also [17]). These difficulties were related to orbitofrontal as well as temporal hypometabolism.

To our knowledge, there is only one recent study [53] in which memory performance in AD and FTLD has been linked to brain atrophy. Using atrophy ratings, the authors found that neural correlates differed (temporal and frontal areas in AD vs. frontal in FTLD), although memory performance was alike between both dementia groups. However, no previous study has systematically explored the neural correlates of memory in early AD and FTLD patients with respect to both regional hypometabolism as measured with [18F]fluorodeoxyglucose positron emission tomography (FDG-PET) as well as brain atrophy as measured with

**Table 1.** Subject characteristics and test results for each group.

	Controls	AD	FTLD	GLM (F/p)
n	13	19	11	
Gender (m/f)	7/6	8/11	6/5	$\chi^2 = .62/p = .73$
Age (ys)	53.92 (6.00)	60.89 (6.94)	61.27 (6.53)	5.3/.009
Education (ys)	12.31 (3.14)	10.95 (3.1)	11.64 (3.88)	.7/.526
CDR (score)	.23 (.26)	.71 (.25)	.73 (.26)	16.2/<.001
WMS-LM1	28.62 (4.82)	11.47 (6.75)	13.10 (6.06)	24.4/<.001
WMS-LM2	23.54 (8.41)	6.77 (6.07)	11.70 (6.99)	14.9/<.001
WMS-LMFR (%)	19.11 (21.57)	26.36 (90.17 <sup>1</sup> )	18.34 (32.16)	.1/.924
WMS-VR1	38.33 (2.10)	23.95 (7.31)	29.7 (9.41)	12.7/<.001
WMS-VR2	34.42 (6.34)	13.42 (10.75)	21.5 (13.52)	9.6/<.001
WMS-VRFR (%)	10.07 (17.14)	49.28 (34.14)	35.89 (36.89)	3.5/.042

Means are given with standard deviations in parentheses. AD: Alzheimer’s disease, FTLD: frontotemporal lobar degeneration, CDR: Clinical Dementia Rating Scale, GLM: General Linear Model, WMS: Wechsler Memory Scale, LM: Logical Memory 1: immediate, 2: delayed, FR: forgetting rate, VR: Visual Reproduction 1: immediate, 2: delayed, FR: forgetting rate). For further analyses see text.

<sup>1</sup>The high standard deviation in this test measure was due to the fact that one AD patient recalled more information in the delayed compared to the immediate recall, although on an extremely low level of performance (one item in the immediate and four items in the delayed recall, thus resulting in a forgetting rate of ~300).

doi:10.1371/journal.pone.0055251.t001

voxel-based morphometry (VBM) of magnetic resonance imaging (MRI) in a whole brain approach. This was the aim of the present study.

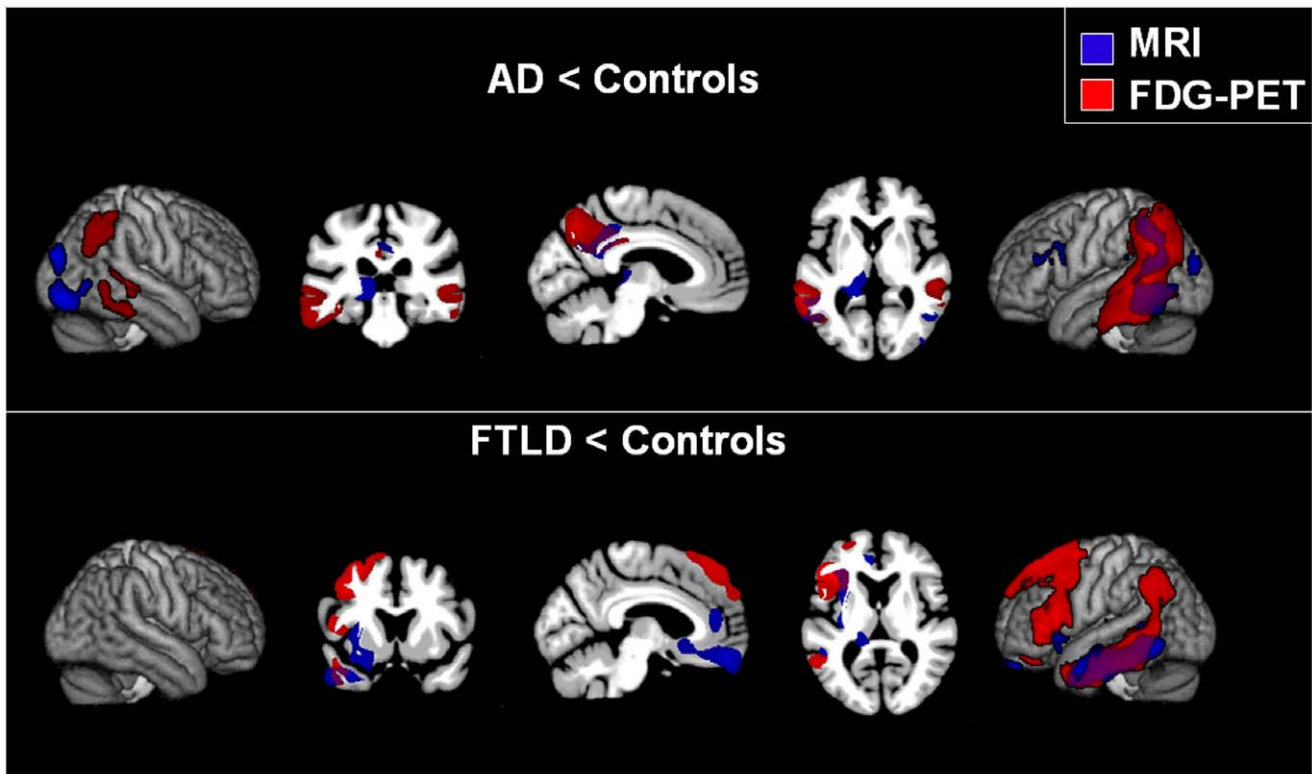
Based on the studies outlined above, we drew the following hypotheses: General lesion patterns as revealed by hypometabolism and atrophy should differ between the two syndromes, with a parietotemporal distribution in AD and frontotemporal in FTLD [22]. With respect to memory performance, previous studies did not allow to clearly predict group differences in encoding or retrieving information, but probably with respect to forgetting rates as some studies found a greater loss of information over time in AD [11,24]. Nevertheless, we expected the neural correlates of memory to differ between the groups according to the differences in lesion patterns [53], which include memory relevant areas in both diseases.

## Materials and Methods

### Subjects

Subjects were recruited from the Day Clinic of Cognitive Neurology at the University of Leipzig. Our study included 19 patients with an early stage of probable AD and 11 patients with an early stage of FTLD (frontotemporal dementia (FTD) n = 4, semantic dementia (SD) n = 5, mixed type n = 2). Probable AD was diagnosed according to NINCDS-ADRDA (National Institute of Neurological and Communicative Disorders and Stroke-Alzheimer’s Disease and Related Disorders Association) criteria [54]. All AD subjects also fulfilled the revised NINCDS-ADRDA criteria [55]. Diagnosis of FTLD was based on the criteria of ref [1]. Symptom severity was measured with the Clinical Dementia Rating Scale (CDR) [56].

We included 13 controls who presented at the clinic because of subjective cognitive complaints, which were not objectively confirmed by a comprehensive neuropsychological and clinical



**Figure 1. Group differences.** Differences between AD patients and controls (upper part) as well as FTLN patients versus controls (lower part) in brain glucose utilization (FDG-PET, red) and atrophy (MRI, blue). Areas of overlap are shown in violet. Only clusters are shown that exceeded a significance threshold of  $p < 0.001$  uncorrected at voxel level and a cluster threshold of 2000 voxels. Left is left. doi:10.1371/journal.pone.0055251.g001

evaluation. Thus, these subjects had noticed normal, age-related decreases in cognitive performance which concerned them. Therefore, they presented at the clinic and asked for a screening for dementia. Their CDR scores ranged between 0 and 0.5.

FDG-PET and MRI as well as the neuropsychological assessment were conducted for diagnostic reasons within the clinical assessment. Subjects were excluded if structural imaging revealed lesions due to stroke, traumatic brain injury, brain tumor or inflammatory diseases. Diagnoses were made prior to computing all subsequent analyses, i. e. the group differences as well as the correlations between test measures and imaging parameters. As can be seen from Table 1, CDR scores indicated early dementia stage for both AD and FTLN. Furthermore, all three groups differed significantly with respect to age ( $F = 5.3$ ;  $p < .01$ ) and CDR ( $F = 16.2$ / $p < .001$ ), but neither with respect to years of education ( $F < 1$ ) nor gender ( $\chi^2 = .62$ ;  $p = .73$ ). We found differences between each of the dementia groups versus the controls with respect to age (AD vs. Controls:  $t(30) = 2.9$ ;  $p = .016$ ; FTLN vs. Controls:  $t(22) = 2.9$ ;  $p = .028$ ) and CDR (AD vs. Controls:  $t(30) = 5.2$ ;  $p < .001$ , FTLN vs. Controls:  $t(22) = 4.7$ ;  $p < .001$ ). Therefore, age was included as a covariate to control for a possible confounding impact of age on the outcome measures. AD and FTLN patients did not differ from one another with respect to age ( $t(28) = -.5$ ;  $p > .99$ ) and CDR ( $t(28) = -.2$ ;  $p > .99$ ).

#### Ethics Statement

Written informed consent was obtained from subjects to analyse their diagnostic data retrospectively. In cases in which the ability to consent was already compromised as the disease had progressed, consent was obtained by caregivers (family members).

The research protocol was approved by the ethics committee of the University of Leipzig, and was in accordance with the latest version of the Declaration of Helsinki.

#### Neuropsychological Assessment

Memory performance in the present study was assessed with two subtests from the German version of the revised Wechsler Memory Scale (WMS-R) [57]: In the subtest *Logical Memory* (LM), two brief stories are read to the subject by the examiner. The participant is asked to recall as many details as possible of each story, both immediately following each presentation (Logical Memory I, maximum score 50) and after a delay of approximately 30 minutes (Logical Memory II, maximum score 50). In the *Visual Reproduction* (VR) subtest, subjects are asked to recall four briefly presented abstract figures by drawing them from memory. As in the LM subtest, the VR figures are to be recalled both immediately after each presentation (Visual Reproduction I, maximum score 41) and after a 30 min delay (Visual Reproduction II, maximum score 41). The WMS-R is widely used for the assessment of memory deficits and has been investigated extensively [58]. In meta-analyses, several WMS subtests have proven to dissociate AD patients from normal controls, especially with respect to delayed recall measures [59]. Furthermore, the *Visual Reproduction* subtest might be useful to distinguish AD from FTLN patients [14]. In addition to the original immediate and delayed recall measures of each subtest, we computed forgetting rates (FR) as this measure has been proposed to be of value in differentiating between AD and FTLN patients [11,24]. Forgetting rates (FR) were computed as individually normalized values according to the following formula for LM and VR, respectively:  $FR = (\text{immediate recall} -$

**Table 2.** Differences in hypometabolism and atrophy between groups.

	Regions	Cluster size	x	y	z	T-value
<i>FDG-PET</i>						
<b>AD&lt;Con</b>	bilateral inferior precuneus, bilateral dorsal posterior cingulate gyrus, left inferior, middle and superior temporal gyrus, left inferior parietal lobule	63163	-39	-54	39	6.8
	right inferior, middle and superior temporal gyrus, right inferior parietal lobule	16005	40	-55	22	6.2
<b>FTLD&lt;Con</b>	left inferior, middle and superior frontal gyrus, left dorsal frontomedian cortex, left superior anterior insula	34412	-39	28	8	4.94
	left inferior, middle and superior temporal gyrus, left inferior parietal lobule	21621	-55	-33	-17	4.75
<i>MRI</i>						
<b>AD&lt;Con</b>	right middle occipital gyrus	3495	30	-80	19	6.28
	right inferior and middle occipital gyrus, right posterior inferior and middle temporal gyrus	4535	39	-75	-8	5.76
	bilateral dorsal posterior cingulate cortex, bilateral inferior precuneus, bilateral retrosplenial cortex	8822	1	-45	29	5.61
	left posterior superior, middle and inferior temporal gyrus, left inferior parietal lobule/angular and supramarginal gyrus	17798	-44	-45	8	4.86
	left posterior hippocampus, left thalamus	4376	-18	-35	-1	4.83
	left middle occipital gyrus	2347	-29	-81	14	4.34
	left inferior frontal gyrus, left inferior frontal sulcus	2994	-45	17	21	4.3
<b>FTLD&lt;Con</b>	left parahippocampal gyrus, left anterior hippocampus, left temporal pole, left subcallosal area, left anterior and posterior insula, left anterior cingulate cortex, left caudate head, left anterior putamen, left ventral striatum, left basal forebrain, left middle and inferior temporal gyri, bilateral rectal gyrus, bilateral inferior frontomedian cortex	35995	-52	-14	-18	5.91
	left posterior thalamus	2033	-17	-35	2	3.99

Statistical results for the comparisons between each dementia group and controls with respect to hypometabolism (FDG-PET) and atrophy (MRI). Cluster size is reported in voxels, voxel size was  $1 \times 1 \times 1$  mm.

doi:10.1371/journal.pone.0055251.t002

delayed recall)/immediate recall\*100. Some WMS-R data were unavailable for some of the subjects: LM was available for 17 AD patients, 10 FTLD patients and 13 control subjects and VR for all 19 AD patients, 10 FTLD patients and 12 control subjects. Three subjects (1 AD, 1 FTLD and 1 control subject) underwent the LM but not the VR subtest. For four subjects (3 AD and 1 FTLD), VR was available but not the LM subtest. Differences between the groups for each test (including FRs) were analyzed using general linear models (GLMs) with a factor Group (Control vs. AD vs. FTLD) and Age as a covariate. As age was not a significant predictor for any of the tests, the post-hoc analyses were computed only for the factor Group by using t-tests ( $p < .05$ ) with a Bonferroni adjustment (in case of significance).

### Imaging Data Analysis

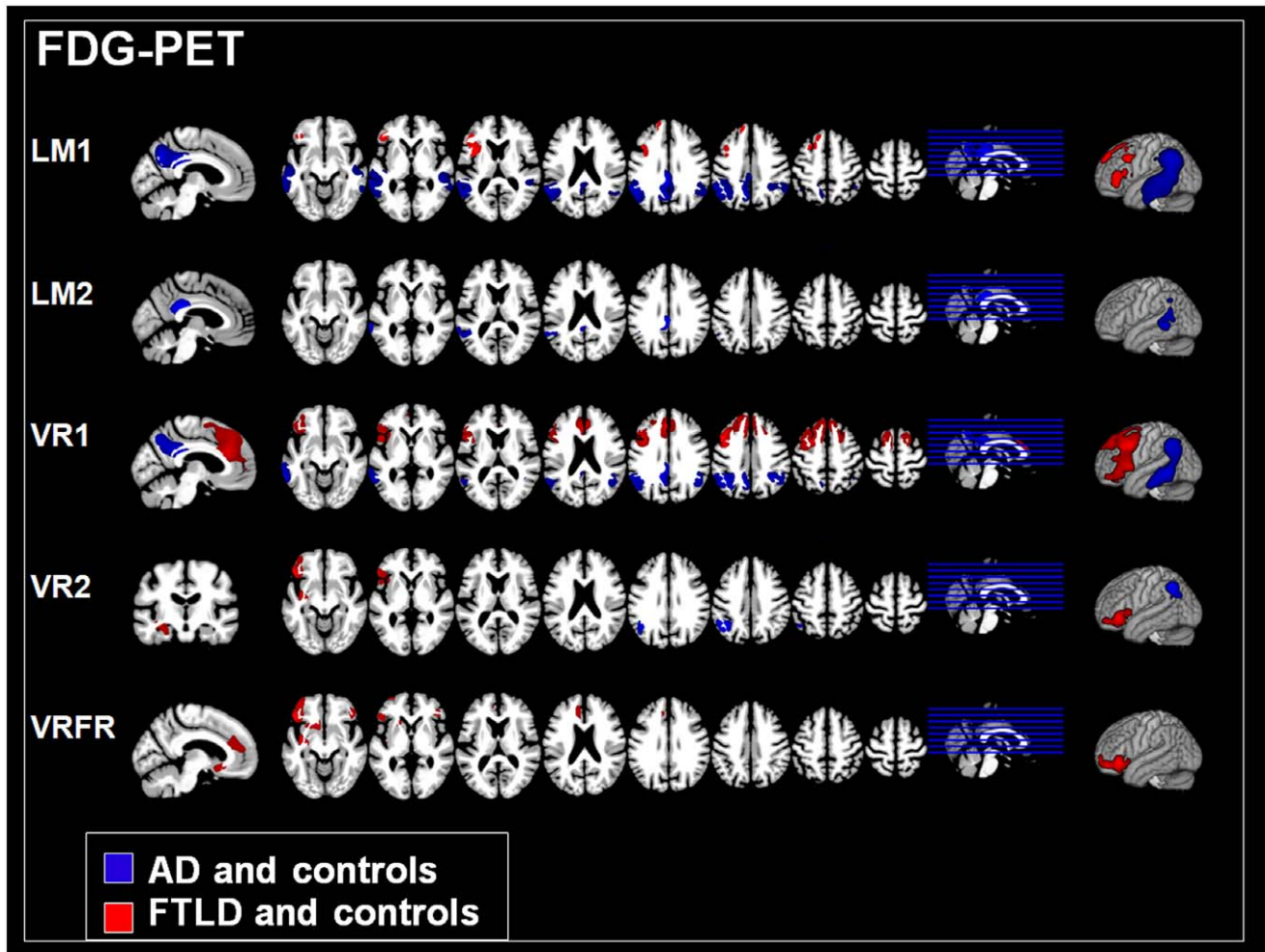
**MRI data acquisition.** For each subject, a high-resolution T1-weighted MRI scan was obtained, consisting of 128 sagittal slices adjusted to the AC (anterior commissure) - PC (posterior commissure) line with a slice thickness of 1.5 mm and a pixel size of  $1 \times 1$  mm<sup>2</sup>. MRIs were performed on two different 3T scanners (MedSpec 30/100, Bruker Biospin, Ettlingen Germany and Magnetom Trio, Siemens, Erlangen, Germany) using two different T1-weighted sequences (MDEFT or MP-RAGE with TR = 1300 ms, TI = 650 ms, TE = 3.93 ms or TE = 10 ms; FOV  $25 \times 25$  cm<sup>2</sup>; matrix =  $256 \times 256$  voxels). On the MedSpec scanner, only the MDEFT sequence and on the Magnetom Trio scanner, either MDEFT or MP-RAGE sequences were used. The distribution of scanner types and sequences used to obtain the MRI data was random across subjects and did not differ

significantly in its distribution, neither between the groups nor between the scanner types nor between the sequences.

**PET data acquisition.** FDG-PET imaging was done either a few weeks before or after the MRI scan. PET data were acquired on a Siemens ECAT EXACT HR+ scanner (CTI/Siemens, Knoxville, TN, USA) under a standard resting condition in a 2-dimensional (2D) mode. Sixty-three slices were simultaneously collected with an axial resolution of 5 mm full width at half maximum (FWHM) and an in-plane resolution of 4.6 mm. After correction for attenuation, scatter, decay and scanner-specific dead-time, images were reconstructed by filtered back-projection using a Hann-filter of 4.9 mm FWHM. The 63 transaxial slices obtained had a matrix of  $128 \times 128$  voxels with an edge length of 2.45 mm.

**Preprocessing and imaging data analysis.** Preprocessing was performed using Statistical Parametric Mapping (SPM 5, Wellcome Trust Centre for Neuroimaging) run with Matlab 7.7 (The MathWorks Inc., Natick, MA) applying the procedure described in detail in ref [60]: Co-registration and interpolation of MRI and FDG-PET images to a resolution of  $1 \times 1 \times 1$  mm<sup>3</sup>, partial volume effect correction of FDG-PET images using the modified Müller-Gärtner method [61], bias correction of MRI data, spatial normalization to a study specific template using the DARTEL approach (Diffeomorphic Anatomical Registration Through Exponentiated Lie algebra, cf. [62]), modulation of MRI data, masking of non gray matter voxels and smoothing using a 12 mm FWHM kernel. Intensity values of FDG-PET scans were normalized to the cerebellar values [63].

Whole brain correlation analyses were conducted between the obtained gray matter volume or glucose metabolism maps and



**Figure 2. Memory performance and hypometabolism.** Correlations between hypometabolism (FDG-PET) and each memory measure for AD patients and controls (blue) as well as FTLN patients and controls (red). LM: WMS *Logical Memory*, VR: WMS *Visual Reproduction*, 1: immediate recall, 2: delayed recall, FR: Forgetting rate. Results are only reported for those memory measures for which significant correlations in any region were found. Only clusters are shown that exceeded a significance threshold of  $p < 0.001$  uncorrected at voxel level and a cluster threshold of 2000 voxels. Left is left.

doi:10.1371/journal.pone.0055251.g002

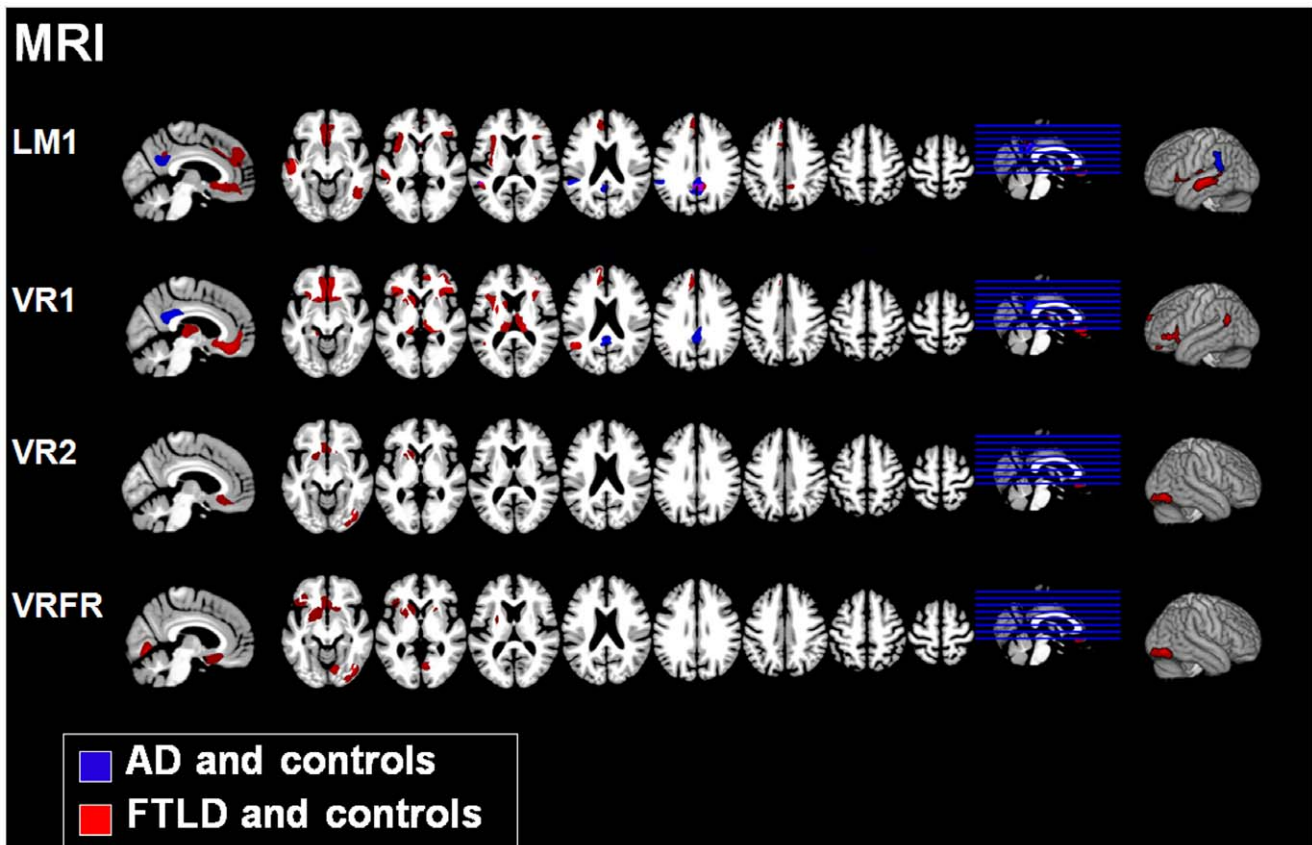
associated scores of the WMS-R. As age differed significantly between the groups, it was included as a covariate in all correlation analyses. A significance threshold of  $p < 0.001$  (uncorrected) at voxel-level and a cluster extent threshold of 2000 voxels were used in all analyses. The cluster threshold was used to exclude smaller clusters from the analysis and thereby decrease the risk of false positive errors. The high extent threshold results from the interpolation of the imaging data to a  $1 \times 1 \times 1 \text{ mm}^3$  resolution and corresponds to about 70 voxels in the original FDG-PET image which is in the range of commonly applied extent thresholds for this type of data. Correlation analyses in FDG-PET and MRI were performed for all six test scores (VR1, VR2, LM1, LM2, VRFR, LMFR) for either AD patients and controls or FTLN patients and controls, respectively. Additionally, to enable an evaluation of both glucose utilization and brain volume in dementia patients, group comparisons with respect to FDG-PET and MRI were computed over all 43 subjects to investigate differences between each group of dementia patients and control subjects, respectively. For the group comparisons, age, gender and total intracranial volume (only for MRI) were included as covariates. Additionally, we performed conjunction analyses to

investigate similarities between observed imaging patterns correlating with single WMS-R measurements in the groups including either AD or FTLN patients.

## Results

### Neuropsychological Data

Table 1 depicts the test results for each patient group and the controls. As the ANOVA results show, the three groups differed significantly with respect to performance in LM1, LM2, VR1, VR2 and VRFR, but not LMFR. There were significant group differences between each of the dementia groups versus controls for LM1 (AD vs. Controls:  $t(28) = -7.8/p < .001$ , FTLN vs. Controls:  $t(21) = -6.8$ ;  $p < .001$ ), LM2 (AD vs. Controls:  $t(28) = -6.4$ ;  $p < .001$ , FTLN vs. Controls:  $t(21) = -3.6$ ;  $p = .001$ ), VR1 (AD vs. Controls:  $t(29) = -6.6$ ;  $p < .001$ , FTLN vs. Controls:  $t(20) = -3.1$ ;  $p = .017$ ), and VR2 (AD vs. Controls:  $t(29) = -6.1$ ;  $p < .001$ , FTLN vs. Controls:  $t(20) = -3.0$ ;  $p = .019$ ). However, AD and FTLN patients did not differ from one another with respect to LM1 ( $t(25) = -.6$ ;  $p > .99$ ), LM2 ( $t(25) = -1.9$ ;  $p = .27$ ), VR1 ( $t(27) = -1.8$ ;  $p = .13$ ) and VR2 ( $t(26) = -1.6$ ;



**Figure 3. Memory performance and atrophy.** Correlations between atrophy (MRI) and each memory measure for AD patients and controls (blue) as well as FTLT patients and controls (red). Areas of overlap are shown in violet (in LM1 only). LM: WMS *Logical Memory*, VR: WMS *Visual Reproduction*, 1: immediate recall, 2: delayed recall, FR: Forgetting rate. Results are only reported for those memory measures for which significant correlations in any region were found. Only clusters are shown that exceeded a significance threshold of  $p < 0.001$  uncorrected at voxel level and a cluster threshold of 2000 voxels. Left is left. doi:10.1371/journal.pone.0055251.g003

$p = .24$ ). The main effect for VRFR was due to a difference between AD patients and control subjects ( $t(29) = 3.7$ ;  $p = .004$ ), but neither between FTLT patients and control subjects ( $t(20) = 2.2$ ;  $p = .18$ ) nor between AD and FTLT patients ( $t(26) = .8$ ;  $p > .99$ ). In sum, AD and FTLT patients performed worse than controls, but both dementia groups did not differ from one another. However, VRFR was significantly higher in AD, but not in FTLT, compared to control subjects.

### Imaging Results for Group Comparisons

Figure 1 displays hypometabolism (FDG-PET) and atrophy (MRI) in AD and FTLT patients versus controls, respectively. Statistical results can be found in Table 2. As can be seen from the figure, AD patients showed a specific pattern of hypometabolism (FDG-PET) especially in the parieto-mesial cortex (precuneus, posterior cingulate), whereas hypometabolism in the FTLT group was mainly found in the left fronto-median and fronto-lateral cortex and in the insula. Hypometabolism in lateral temporal and inferior parietal regions was seen in both groups in comparison to controls. It was restricted to the left hemisphere in the FTLT group, but occurred bilaterally in the AD patients.

Regional atrophy (MRI) was found in similar regions as hypometabolism and additionally in subcortical structures. In particular, gray matter (GM) loss in the (left) hippocampus and in the thalamus was found in both groups. By contrast, only FTLT

patients exhibited atrophy in the insula, the basal ganglia and the basal forebrain relative to control subjects.

### Correlation Analyses

Figure 2 and Table 3 display the results of the correlation analyses between metabolism and memory performance in each dementia group and controls for each memory measure. Correlations between atrophy and memory performance are shown in Figure 3 and Table 4.

**FDG-PET: AD patients and controls.** Performance in the immediate recall of verbal information (LM1) was correlated with glucose metabolism in the bilateral parieto-mesial cortex (precuneus, retrosplenial and cingulate cortex) and in the lateral parietal and temporal regions of both hemispheres, though much more extensive in the left. Delayed verbal recall (LM2) was also associated with bilateral parieto-mesial and left lateral temporal glucose metabolism. Forgetting rates (LMFR) did not correlate with glucose utilization in any region. Performance in immediate visual recall (VR1) was correlated with glucose metabolism in left parieto-mesial regions (cingulate gyrus, precuneus) and in temporo-parietal regions in both hemispheres, with a focus in the left hemisphere. Performance in the delayed recall of visual information (VR2) was correlated with glucose metabolism in the left inferior parietal lobe. We did not find any correlations between glucose metabolism and visual forgetting rates (VRFR).

**Table 3.** Memory performance and hypometabolism.

Subtest	Regions	Cluster size	x	y	z	T-value
<i>AD and Controls</i>						
<b>LM1</b>	bilateral dorsal posterior cingulate gyrus, bilateral precuneus, bilateral retrosplenial cortex	13338	-5	-39	30	7.68
	left inferior parietal lobule, left middle and posterior superior/middle/inferior temporal gyrus	43495	-53	-52	36	6.14
	right posterior and middle superior temporal sulcus, right inferior, middle and superior temporal gyrus	8210	48	-35	2	5.01
	right inferior parietal lobule	8166	27	-49	42	4.34
<b>LM2</b>	bilateral dorsal posterior cingulate cortex	2477	-4	-38	26	5.46
	left posterior superior and middle temporal gyrus	4703	-68	-44	-2	4.32
<b>LMFR</b>		n. s.				
<b>VR1</b>	left inferior parietal lobule, left posterior middle and inferior temporal gyrus	23806	-34	-50	35	6.46
	left dorsal posterior cingulate cortex, left precuneus	7156	-16	-48	36	5.88
	right inferior parietal lobule, right temporo-parietal junction area	8970	37	-51	42	4.89
<b>VR2</b>	left inferior parietal lobule/angular and supramarginal gyrus	6038	-39	-55	38	4.97
<b>VRFR</b>		n. s.				
<i>FTLD and Controls</i>						
<b>LM1</b>	left posterior inferior frontal sulcus, left inferior frontal junction area	2384	-37	7	36	4.5
	left inferior frontal gyrus, left anterior superior insula	5097	-37	10	10	4.47
	left posterior superior frontal sulcus	2957	-14	46	39	4.14
<b>LM2</b>		n. s.				
<b>LMFR</b>		n. s.				
<b>VR1</b>	left inferior frontal gyrus (pars orbitalis, pars opercularis and pars triangularis), left posterior middle and superior frontal gyrus	45383	-45	13	41	6.66
	bilateral anterior midcingulate cortex, bilateral paracingulate cortex, bilateral dorsal frontomedian cortex, bilateral posterior superior frontal gyrus	10849	3	36	24	5.25
<b>VR2</b>	left inferior frontal gyrus (pars orbitalis and triangularis), left superior anterior insula	7049	-49	32	-6	6.18
	left anterior hippocampus, left inferior insula	3017	-30	-11	-14	5.56
<b>VRFR</b>	left inferior frontal gyrus (pars orbitalis and pars triangularis); left anterior insula, left caudate head, left ventral striatum, left basal forebrain	10776	-47	32	-8	6.05
	left inferior insula, left anterior hippocampus	3594	-36	-8	-13	5.72
	right inferior frontal gyrus (pars orbitalis)	2186	43	35	-3	4.54
	left pregenual anterior cingulate cortex	2128	-12	33	23	4.37

Statistical results for the correlations between each memory measure and hypometabolism (FDG-PET) for AD patients and controls as well as FTL patients and controls. Cluster size is reported in voxels, voxel size was  $1 \times 1 \times 1$  mm.

doi:10.1371/journal.pone.0055251.t003

**FDG-PET: FTL patients and controls.** Performance in the immediate recall of verbal information (LM1) was correlated with glucose metabolism especially in the left inferior frontal cortex and in the left anterior insula. Neither delayed verbal recall (LM2) nor verbal forgetting rates (LMFR) were correlated with glucose metabolism in any region. Correlations between the immediate recall of visual information (VR1) and glucose metabolism were also accentuated in the frontal cortex, though much more extensive compared to the verbal domain (LM1). In addition to the left superior, middle and inferior frontal cortices, correlations were also found in the frontomedian cortex including the anterior cingulate gyrus. With respect to delayed visual recall (VR2), we found that glucose metabolism and test performance were again positively correlated in the left inferior frontal cortex and in the insula, and additionally in the left anterior hippocampus. Forgetting rates of visual information were negatively correlated with glucose utilization in the lateral

inferior frontal cortices bilaterally and in the left insula, anterior cingulate cortex, basal ganglia (esp. caudate), anterior hippocampus and basal forebrain.

**MRI: AD patients and controls.** Correlations between performance in the immediate recall of verbal information (LM1) and GM volume were found in bilateral parieto-mesial areas (precuneus, cingulate gyrus) as well as in the left inferior parietal and superior temporal cortex. We did not find any correlations between the scores in the delayed verbal recall (LM2) or verbal forgetting rates (LMFR), respectively, and gray matter volumes in any region. Similarly, lower performance in the immediate visual recall (VR1) was associated with lower GM volume in parieto-mesial regions (precuneus, posterior cingulate). Again, we did not find any correlations between the scores in delayed verbal recall (LM2) or verbal forgetting rates (LMFR), respectively, with GM volumes in any region.

**Table 4.** Memory performance and atrophy.

Subtest	Regions	Cluster size	x	y	z	T-value
<i>AD and Controls</i>						
LM1	left supramarginal gyrus, left posterior superior temporal gyrus	2279	-52	-46	23	4.81
	bilateral dorsal posterior cingulate cortex, bilateral inferior precuneus	3894	1	-50	29	4.48
LM2		n. s.				
LMFR		n. s.				
VR1	bilateral dorsal posterior cingulate cortex, bilateral inferior precuneus	4028	-2	-49	24	4.92
VR2		n. s.				
VRFR		n. s.				
<i>FTLD and Controls</i>						
LM1	left superior temporal sulcus, left superior and middle temporal gyrus	6207	-50	-25	-2	6.43
	right inferior frontal gyrus (pars orbitalis and pars triangularis), right superior anterior insula	2470	42	32	5	5.68
	bilateral inferior precuneus	2322	3	-52	36	4.93
	right posterior inferior temporal gyrus	2286	46	-61	-13	4.91
	bilateral subgenual anterior cingulate cortex, bilateral ventromedial frontal cortex	4102	-1	21	-3	4.74
	left superior anterior insula	4625	-33	9	4	4.72
	left paracingulate gyrus, left dorsal anterior frontomedian cortex	3241	-5	42	37	4.12
LM2		n. s.				
LMFR		n. s.				
VR1	right inferior frontal gyrus (pars orbitalis and pars triangularis), right anterior superior insula	5386	41	35	-2	5.94
	bilateral thalamus, left posterior parahippocampal gyrus	7496	18	-27	7	5.68
	bilateral subcallosal area, bilateral ventromedial frontal cortex, bilateral caudate head, left dorsal putamen, right anterior putamen, right ventral striatum, right basal forebrain, left anterior insula, left inferior frontal cortex (pars orbitalis and pars triangularis)	19147	-37	35	-3	5.59
	left temporo-parietal junction area	2026	-47	-55	22	5.4
	left anterior dorsal frontomedian cortex, left paracingulate cortex, left superior frontal gyrus	2965	-11	48	24	4.35
	right inferior occipital gyrus	2935	38	-76	-10	6.84
VR2	bilateral subcallosal area, bilateral subgenual anterior cingulate cortex, bilateral caudate head, bilateral anterior putamen, bilateral ventral striatum, bilateral basal forebrain	5078	-3	26	-10	4.18
	right inferior occipital gyrus	3623	38	-76	-10	7.1
VRFR	right lingual gyrus	2402	7	-70	-6	6.16
	left anterior insula, left inferior frontal gyrus (pars orbitalis and triangularis), left anterior putamen, bilateral ventral striatum, bilateral basal forebrain, bilateral rectal gyrus, bilateral subgenual anterior cingulate cortex, bilateral caudate head	18253	-42	24	-4	5.2

Statistical results for the correlations between each memory measure and atrophy (MRI) for AD patients and controls as well as FTLN patients and controls. Cluster size is reported in voxels, voxel size was 1×1×1 mm.

doi:10.1371/journal.pone.0055251.t004

**MRI: FTLN patients and controls.** Deficits in immediate verbal recall (LM1) were correlated with atrophy in the precuneus bilaterally, the right inferior frontal cortex, the left insula and the left dorsal frontomedian cortex. Further correlations were found in the bilateral orbitofrontal cortices as well as the anterior cingulate cortex. Performance in the immediate recall of visual information (VR1) was correlated with GM volume in the inferior frontal and the orbitofrontal cortices bilaterally and in the left parahippocampal gyrus as well as in the basal ganglia (caudate, putamen), thalamus and subcallosal area bilaterally. Correlations between performance in the delayed recall of visual information (VR2) and brain volume

were mainly found in bilateral frontal cortical (anterior cingulate) and subcortical areas (basal ganglia, subcallosal area), and in the right inferior occipital gyrus. Visual forgetting rates (VRFR) were negatively associated with GM volume in a large cluster comprising the left inferior frontal gyrus, the left insula, the anterior cingulate cortices, basal forebrain and basal ganglia bilaterally as well as in an area in the right occipital cortex.

**Conjunction analysis.** We found an overlap of atrophy (MRI) with respect to the LM1 subtest between AD and control subjects, and FTLN and control subjects, respectively, in the bilateral posterior cingulate cortex and the left superior temporal gyrus (851 voxels, corresponding to 13.8% of all voxels in AD and



controls and 3.4% of all voxels in FTL D and controls, respectively, see overlapping regions in Figure 3/LM1). No further overlaps were observed in any of the remaining analyses.

## Discussion

In the present study, we investigated the neural correlates of immediate and delayed verbal and visual memory in patients with early AD and FTL D with respect to both PET hypometabolism and MR brain atrophy. To our knowledge, this is the first study that investigates both patient groups with respect to different memory domains (verbal, visual, forgetting rates) and different imaging markers (glucose metabolism, GM volume) in a whole-brain approach.

### Lesion Patterns in AD and FTL D

Group comparisons in FDG-PET and MRI between each of the dementia groups and control subjects largely replicate previous findings from the literature. Hippocampal atrophy in the AD group compared to controls in connection with GM loss in medial and lateral parietal regions is a common finding [34,35]. The absence of hypometabolism in the hippocampus seems more surprising as there are diverging findings in the literature on this issue [64]. Regional hypometabolism might have disappeared in our study, because we corrected FDG-PET data for partial volume effects according to atrophy – a procedure that is uncommonly applied in the literature. Whereas the finding of atrophy in fronto-medial and fronto-lateral cortices and in the basal ganglia in FTL D is expected with respect to previous studies [20,49,50,60,65,66], hippocampal atrophy seems puzzling at first sight. However, there are a number of studies which report volume reductions in the hippocampus in FTL D [18–22,50,51], also in pathologically validated FTD [16]. In a very recent study, hippocampal atrophy did not differ between AD and FTD patients which lead the authors to the general conclusion that the extent of hippocampal atrophy is not an efficient diagnostic marker in order to distinguish AD from FTD [66]. This latter study further confirms the view that memory may be more severely affected than previously assumed in these patients.

### Memory Performance in AD and FTL D

With respect to memory test performance, the two dementia subgroups did not differ from each other, although both performed significantly lower than controls in all test measures, except for visual forgetting rates where FTL D patients did not differ from controls. This latter finding may point to slight differences between the groups, probably due to stronger visuospatial problems interfering with visual memory in the AD, but not the FTL D group [14,18].

Findings of considerable memory impairments in early stages of FTL D have already been reported which raised the question whether FTL D and AD patients can be clearly distinguished on the basis of memory test performance (see Introduction). The results of our study support these findings as both dementia groups did not differ in their abilities to retrieve information that has been encoded initially, since even forgetting rates did not differ between the groups. However, our results do not allow deciding whether the low forgetting rates in AD and FTL D are caused by the same mechanisms or whether both groups might nevertheless differ in their abilities to consolidate information as our study did not include recognition trials [11,12,24].

### Neural Correlates of Memory in AD and FTL D

Aside from small atrophy overlaps in the LM1 subtest (immediate recall of verbal information) as revealed by a conjunction analysis, we found that similar decreases in memory performance between the two dementia groups had completely different underlying neural substrates: The parieto-mesial cortex (precuneus, retrosplenial and posterior cingulate cortex) correlated with memory performance (both verbal and visual) only when the AD group was included. This finding corroborates studies which highlight the role of these areas in the development of AD (see Introduction) as well as in the context of memory functions, such as the retrieval of (episodic) memories in both healthy control subjects (see refs [67–68] for reviews) and in patients with memory deficits such as AD patients [48] or patients with transient global ischemia [69]. One anatomical explanation for this role might be the high interconnectivity between the medial parietal lobe and medial temporal structures [68,70]. In contrast, when the FTL D group was included, memory performance was primarily associated with metabolism and GM volume in frontal cortical (esp. lateral and medial frontal cortex) and subcortical structures (insula, basal ganglia, anterior cingulate, and basal forebrain). These results are in line with earlier findings that these regions are primarily affected in FTL D, a result which was also confirmed in our group comparisons. Especially the inferior frontal cortex has been shown to play an important role in encoding and retrieving information [71–73]. Our results suggest that further areas are involved in FTL D which are crucial for memory functions such as the anterior cingulate cortex [71], the basal ganglia [74], and the basal forebrain [75,76] which can all lead to severe amnesia in the case of damage. Thus, although lesion patterns differed between AD and FTL D, structures crucial for memory functions seemed to be affected in both diseases.

### Limitations of the Study

Finally, there are some limitations of our study. First of all, our diagnostic classification was purely based on clinical criteria. Further studies are needed to dissociate memory networks in FTL D subtypes including histopathological validation.

Secondly, the small sample sizes (especially in the FTL D group), principally limit a generalization of the results to the different disease populations. Furthermore, the small sample sizes do not allow dissociating possible differences in the memory related networks between the FTL D subgroups (FTD, SD, mixed type). Such differences as well as differences in memory performance might be expected according to the literature (see Introduction). Assigning all these patients to one group (which was not possible otherwise due to the small number of subjects) might have led to the high variability thereby obscuring possible differences between the FTL D and the AD group.

A reason why we did not observe differences between AD and FTL D patients in any of the neuropsychological tests might be a lack of power in our study resulting from the small sample sizes. In fact, estimations of effect sizes for the differences in neuropsychological test performance for both groups of patients indicated small to medium sized effects for all of the neuropsychological tests (between  $r = .06$  to  $r = .36$ ).

Another potential source of limitation for the interpretation of differential spatial networks showing a correlation with neuropsychological performance might be a lack of power in one of the conditions. However, we do not think that the observed distinction in networks can be explained by a lack of power, for the following reasons: First of all, a lack of power in one of the conditions (either correlations of imaging data with memory scores only in AD and controls or only in FTL D and controls) would rather result in the

observation of a specific network in one but not in the other condition. In contrast, what we found were two distinct networks showing similarly significant correlations with the neuropsychological performance in both analyses. Secondly, we found even slightly higher *t*-values in some of the correlation analyses with the smaller number of subjects (FTLD and controls) which is the opposite of what one would expect if the difference in results would be attributable to a lack of power.

In addition, we cannot completely rule out the objection that subjects with cognitive complaints were not ideal controls. Including these subjects as controls might have underestimated the deficits in the two dementia groups. Nevertheless, we think that it was justified to include them as a comparison group for the following reasons: In the examination, it became clear that these subjects experienced an age-related -though not abnormal according to our assessment- cognitive decline which concerned them (e. g. that they were not as fast at work anymore or could not memorize as many details compared to earlier ages). None of them had a CDR score greater than 0.5 which is also found frequently in random samples from the normal population. An earlier study e. g. reported that 23% of the subjects in a random sample had a CDR of 0.5 [77], although the mean age in these subjects was higher than in ours. Certainly, one general limitation of studies such as ours is that, for ethical reasons, invasive techniques such as PET should not be applied without clinical justification.

Furthermore, we do not claim that early AD and FTL D patients have a completely identical profile with respect to their memory abilities. Our results only show that widely used neuropsychological test measures of immediate and delayed recall may not differentiate between the groups, even if additional parameters such as forgetting rates are applied. We cannot exclude that other test parameters (such as a recognition paradigm), experimental procedures (e. g. on source memory) or more naturalistic tasks (such as incidental encoding) may reveal differences (see ref [27] for a review).

Last but not least: We have used the term “network” very generally. In fact, we have only identified patterns of brain areas in which the extent of damage is correlated with a task performance. However, we have used a rather “static” methodological approach (atrophy and metabolism at rest) which did not allow disentangling the dynamic interplay of these areas while a specific function is carried out in a lesioned brain. This would be an aim for further

studies using methods such as DTI, task-related fMRI or resting state connectivity [78–80].

## Conclusion

We have shown that memory test performance may not differentiate between early AD and FTL D, but that the underlying memory networks can nevertheless be clearly dissociated with respect to both hypometabolism and atrophy. Furthermore, this dissociation does not depend on a priori hypotheses with respect to specific brain areas, but can also be shown in a data-driven, whole brain approach. This finding contributes to a more profound understanding of how memory processes are connected to the degeneration of the underlying neural networks.

With respect to clinical practice, even severe memory problems should not automatically exclude the diagnosis of FTL D as this might lead to misclassifications [26]. With respect to the classification of clinical dementia syndromes, our data suggest that respective algorithms should include a diversity of clinical as well as imaging parameters in order to reveal the crucial differences.

More generally, our data speak in favour of a view according to which functions are not strictly “localized” in the brain but are carried out by distributed networks. This view leads to interesting predictions for how the brain deals with lesions [79]. Neurodegenerative dementias are “paradigmatic” for this network view as these diseases crucially involve lesions of central nexuses (“hubs”) [80]. This leads to a loss of connectivity to a degree which cannot be compensated anymore by the rest of the brain and therefore leads to the far-reaching disabilities in dementing illnesses.

## Acknowledgments

The authors want to thank the PET and cyclotron staff at the Department of Nuclear Medicine and the staff at the Day Clinic for Cognitive Neurology at the University of Leipzig for their help in data acquisition.

## Author Contributions

Conceived and designed the experiments: SF JD BV. Performed the experiments: BV GB AH. Analyzed the data: SF BV JD AH KM HB. Contributed reagents/materials/analysis tools: AV HB OS KM. Wrote the paper: SF JD MS.

## References

- Neary D, Snowden JS, Gustafson L, Passant U, Stuss D, et al. (1998) Frontotemporal lobar degeneration: a consensus on clinical diagnostic criteria. *Neurology* 51: 1546–54.
- Neary D, Snowden J, Mann D (2005) Frontotemporal dementia. *Lancet Neurol* 4: 771–80.
- Raczka KA, Becker G, Seese A, Frisch S, Heiner S, et al. (2010) Executive and behavioral deficits share common neural substrates in frontotemporal lobar degeneration - a pilot FDG-PET study. *Psychiatry Res* 182: 274–80.
- Schroeter ML (2012) Considering the frontomedian cortex in revised criteria for behavioural variant frontotemporal dementia. *Brain* 135: e213.
- Schroeter ML, Vogt B, Frisch S, Becker G, Barthel H, et al. (2012) Executive deficits are related to the inferior frontal junction in early dementia. *Brain* 135: 201–15.
- Hodges JR, Patterson K, Ward R, Garrard P, Bak T, et al. (1999) The differentiation of semantic dementia and frontal lobe dementia (temporal and frontal variants of frontotemporal dementia) from early Alzheimer's disease: a comparative neuropsychological study. *Neuropsychology* 13: 31–40.
- Mathuranath PS, Nestor PJ, Berrios GE, Rakowicz W, Hodges JR (2000) A brief cognitive test battery to differentiate Alzheimer's disease and frontotemporal dementia. *Neurology* 55: 1613–20.
- Glosser G, Gallo JL, Clark CM, Grossman M (2002) Memory encoding and retrieval in frontotemporal dementia and Alzheimer's disease. *Neuropsychology* 16: 190–6.
- Kramer JH, Jurik J, Sha SJ, Rankin KP, Rosen HJ, et al. (2003) Distinctive neuropsychological patterns in frontotemporal dementia, semantic dementia, and Alzheimer disease. *Cogn Behav Neurol* 16: 211–8.
- Perri R, Koch G, Carlesimo GA, Serra L, Fadda L, et al. (2005) Alzheimer's disease and frontal variant of frontotemporal dementia—a very brief battery for cognitive and behavioural distinction. *J Neurol* 252: 1238–44.
- Thompson JC, Stopford CL, Snowden JS, Neary D (2005) Qualitative neuropsychological performance characteristics in frontotemporal dementia and Alzheimer's disease. *J Neurol Neurosurg Psychiatry* 76: 920–7.
- Libon DJ, Xie SX, Moore P, Farmer J, Antani S, et al. (2007) Patterns of neuropsychological impairment in frontotemporal dementia. *Neurology* 68: 369–75.
- Giovagnoli AR, Erbetta A, Reati F, Bugiani O (2008) Differential neuropsychological patterns of frontal variant frontotemporal dementia and Alzheimer's disease in a study of diagnostic concordance. *Neuropsychologia* 46: 1495–504.
- Kertesz A, Davidson W, McCabe P, Munoz D (2003) Behavioral quantitation is more sensitive than cognitive testing in frontotemporal dementia. *Alzheimer Dis Assoc Disord* 17: 223–9.
- Hodges JR, Davies RR, Xuereb JH, Casey B, Broe M, et al. (2004) Clinicopathological correlates in frontotemporal dementia. *Ann Neurol* 56: 399–406.
- Graham A, Davies R, Xuereb J, Halliday G, Kril J, et al. (2005) Pathologically proven frontotemporal dementia presenting with severe amnesia. *Brain* 128: 597–605.

17. Matuszewski V, Piolino P, de la Sayette V, Lalevée C, Pélerin A, et al. (2006) Retrieval mechanisms for autobiographical memories: insights from the frontal variant of frontotemporal dementia. *Neuropsychologia* 44: 2386–97.
18. Galton CJ, Patterson K, Graham K, Lambon-Ralph MA, Williams G, et al. (2001) Differing patterns of temporal atrophy in Alzheimer's disease and semantic dementia. *Neurology* 57: 216–25.
19. Barnes J, Whitwell JL, Frost C, Josephs KA, Rossor M, et al. (2006) Measurements of the amygdala and hippocampus in pathologically confirmed Alzheimer disease and frontotemporal lobar degeneration. *Arch Neurol* 63: 1434–9.
20. Schroeter ML, Raczka K, Neumann J, Yves von Cramon D (2007) Towards a nosology for frontotemporal lobar degenerations—a meta-analysis involving 267 subjects. *Neuroimage* 36: 497–510.
21. Pereira JM, Williams GB, Acosta-Cabrero J, Pengas G, Spillantini MG, et al. (2009) Atrophy patterns in histologic vs clinical groupings of frontotemporal lobar degeneration. *Neurology* 72: 1653–60.
22. Schroeter ML, Neumann J (2011) Combined Imaging Markers Dissociate Alzheimer's Disease and Frontotemporal Lobar Degeneration - An ALE Meta-Analysis. *Front Aging Neurosci* 3: 10.
23. Gregory CA, Orrell M, Sahakian B, Hodges JR (1997) Can frontotemporal dementia and Alzheimer's disease be differentiated using a brief battery of tests? *Int J Geriatr Psychiatry* 12: 375–83.
24. Razani J, Boone KB, Miller BL, Lee A, Sherman D (2001) Neuropsychological performance of right- and left-frontotemporal dementia compared to Alzheimer's disease. *J Int Neuropsychol Soc* 7: 468–80.
25. Diehl J, Monsch AU, Aebi C, Wagenpfeil S, Krapp S, et al. (2005) Frontotemporal dementia, semantic dementia, and Alzheimer's disease: the contribution of standard neuropsychological tests to differential diagnosis. *J Geriatr Psychiatry Neurol* 18: 39–44.
26. Hornberger M, Piguet O (2012) Episodic memory in frontotemporal dementia: a critical review. *Brain* 135: 678–92.
27. Hornberger M, Piguet O, Graham AJ, Nestor PJ, Hodges JR (2010) How preserved is episodic memory in behavioral variant frontotemporal dementia? *Neurology* 74: 472–9.
28. Hutchinson AD, Mathias JL (2007) Neuropsychological deficits in frontotemporal dementia and Alzheimer's disease: a meta-analytic review. *J Neurol Neurosurg Psychiatry* 78: 917–28.
29. Wicklund AH, Johnson N, Rademaker A, Weitner BB, Weintraub S (2006) Word list versus story memory in Alzheimer disease and frontotemporal dementia. *Alzheimer Dis Assoc Disord* 20: 86–92.
30. Mendez MF, Shapira JS, McMurtray A, Licht E, Miller BL (2007) Accuracy of the clinical evaluation for frontotemporal dementia. *Arch Neurol* 64: 830–5.
31. Levy JA, Chelune GJ (2007) Cognitive-behavioral profiles of neurodegenerative dementias: beyond Alzheimer's disease. *J Geriatr Psychiatry Neurol* 20: 227–38.
32. Xu Y, Jack CR Jr, O'Brien PC, Kokmen E, Smith GE, et al. (2000) Usefulness of MRI measures of entorhinal cortex versus hippocampus in AD. *Neurology* 54: 1760–7.
33. Pennanen C, Kivipelto M, Tuomainen S, Hartikainen P, Hänninen T, et al. (2004) Hippocampus and entorhinal cortex in mild cognitive impairment and early AD. *Neurobiol Aging* 25: 303–10.
34. Whitwell JL, Przybelski SA, Weigand SD, Knopman DS, Boeve BF, et al. (2007) 3D maps from multiple MRI illustrate changing atrophy patterns as subjects progress from mild cognitive impairment to Alzheimer's disease. *Brain* 130: 1777–86.
35. Schroeter ML, Stein T, Maslowski N, Neumann J (2009) Neural correlates of Alzheimer's disease and mild cognitive impairment: a systematic and quantitative meta-analysis involving 1351 patients. *Neuroimage* 47: 1196–206.
36. Boxer AL, Rankin KP, Miller BL, Schuff N, Weiner M, et al. (2003) Cinguloparietal atrophy distinguishes Alzheimer disease from semantic dementia. *Arch Neurol* 60: 949–56.
37. Karas G, Scheltens P, Rombouts S, van Schijndel R, Klein M, et al. (2007) Precuneus atrophy in early-onset Alzheimer's disease: a morphometric structural MRI study. *Neuroradiology* 49: 967–76.
38. Ibáñez V, Pietrini P, Alexander GE, Furey ML, Teichberg D, et al. (1998) Regional glucose metabolic abnormalities are not the result of atrophy in Alzheimer's disease. *Neurology* 50: 1585–93.
39. Salmon E, Lekeu F, Bastin C, Garraux G, Collette F (2008) Functional imaging of cognition in Alzheimer's disease using positron emission tomography. *Neuropsychologia* 46: 1613–23.
40. Chételat G, Desgranges B, de la Sayette V, Viader F, Berkouk K, et al. (2003) Dissociating atrophy and hypometabolism impact on episodic memory in mild cognitive impairment. *Brain* 126: 1955–67.
41. Leube DT, Weis S, Freymann K, Erb M, Jessen F, et al. (2008) Neural correlates of verbal episodic memory in patients with MCI and Alzheimer's disease—a VBM study. *Int J Geriatr Psychiatry* 23: 1114–8.
42. Deweer B, Lehéricy S, Pillon B, Baulac M, Chiras J, et al. (1995) Memory disorders in probable Alzheimer's disease: the role of hippocampal atrophy as shown with MRI. *J Neurol Neurosurg Psychiatry* 58: 590–7.
43. Fox NC, Warrington EK, Freeborough PA, Hartikainen P, Kennedy AM, et al. (1996) Presymptomatic hippocampal atrophy in Alzheimer's disease. A longitudinal MRI study. *Brain* 119: 2001–7.
44. Di Paola M, Caltagirone C, Fadda L, Sabatini U, Serra L, et al. (2008) Hippocampal atrophy is the critical brain change in patients with hypoxic amnesia. *Hippocampus* 18: 719–28.
45. Caroli A, Testa C, Geroldi C, Nobili F, Barnden LR, et al. (2007) Cerebral perfusion correlates of conversion to Alzheimer's disease in amnesic mild cognitive impairment. *J Neurol* 254: 1698–707.
46. Desgranges B, Baron JC, de la Sayette V, Petit-Taboué MC, Benali K, et al. (1998) The neural substrates of memory systems impairment in Alzheimer's disease. A PET study of resting brain glucose utilization. *Brain* 121: 611–31.
47. Desgranges B, Baron JC, Lalevée C, Giffard B, Viader F, et al. (2002) The neural substrates of episodic memory impairment in Alzheimer's disease as revealed by FDG-PET: relationship to degree of deterioration. *Brain* 125: 1116–24.
48. Eustache F, Piolino P, Giffard B, Viader F, De La Sayette V, et al. (2004) 'In the course of time': a PET study of the cerebral substrates of autobiographical amnesia in Alzheimer's disease. *Brain* 127: 1549–60.
49. Diehl J, Grimmer T, Drzezga A, Riemenschneider M, Förstl H, et al. (2004) Cerebral metabolic patterns at early stages of frontotemporal dementia and semantic dementia. A PET study. *Neurobiol Aging* 25: 1051–6.
50. Desgranges B, Matuszewski V, Piolino P, Chételat G, Mézenge F, et al. (2007) Anatomical and functional alterations in semantic dementia: a voxel-based MRI and PET study. *Neurobiol Aging* 28: 1904–13.
51. Good CD, Schill RI, Fox NC, Ashburner J, Friston KJ, et al. (2002) Automatic differentiation of anatomical patterns in the human brain: validation with studies of degenerative dementias. *Neuroimage* 17: 29–46.
52. Piolino P, Chételat G, Matuszewski V, Landeau B, Mézenge F, et al. (2007) In search of autobiographical memories: A PET study in the frontal variant of frontotemporal dementia. *Neuropsychologia* 45: 2730–43.
53. Pennington C, Hodges JR, Hornberger M (2011) Neural correlates of episodic memory in behavioral variant frontotemporal dementia. *J Alzheimers Dis* 24: 261–8.
54. McKhann G, Drachman D, Folstein M, Katzman R, Price D, et al. (1984) Clinical diagnosis of Alzheimer's disease: report of the NINCDS-ADRDA Work Group under the auspices of Department of Health and Human Services Task Force on Alzheimer's Disease. *Neurology* 34: 939–44.
55. Dubois B, Feldman HH, Jacova C, Dekosky ST, Barberger-Gateau P, et al. (2007) Research criteria for the diagnosis of Alzheimer's disease: revising the NINCDS-ADRDA criteria. *Lancet Neurol* 6: 734–46.
56. Morris JC (1997) Clinical dementia rating: a reliable and valid diagnostic and staging measure for dementia of the Alzheimer type. *Int Psychogeriatr* 9 Suppl 1: 173–6.
57. Härtig C, Markowitsch HJ, Neufeld H, Calabrese P, Deisinger K, et al. (2000) Wechsler Gedächtnistest—Revidierte Fassung (WMS-R). Bern, Switzerland: Hans Huber.
58. Lezak MD, Howieson DB, Loring DW (2004) *Neuropsychological Assessment* (4th ed.). New York: Oxford University Press.
59. Zaksanis KK (1998) Quantitative evidence for neuroanatomic and neuropsychological markers in dementia of the Alzheimer's type. *J Clin Exp Neuropsychol* 20: 259–69.
60. Dukart J, Mueller K, Horstmann A, Barthel H, Möller HE, et al. (2011) Combined evaluation of FDG-PET and MRI improves detection and differentiation of dementia. *PLoS One* 6: e18111.
61. Rousset OG, Ma Y, Evans AC (1998) Correction for partial volume effects in PET: principle and validation. *J Nucl Med* 39: 904–11.
62. Ashburner J (2007) A fast diffeomorphic image registration algorithm. *Neuroimage* 38: 95–113.
63. Dukart J, Mueller K, Horstmann A, Vogt B, Frisch S, et al. (2010) Differential effects of global and cerebellar normalization on detection and differentiation of dementia in FDG-PET studies. *Neuroimage* 49: 1490–5.
64. Chételat G, Desgranges B, Landeau B, Mézenge F, Poline JB, et al. (2008) Direct voxel-based comparison between grey matter hypometabolism and atrophy in Alzheimer's disease. *Brain* 131: 60–71.
65. Schroeter ML, Raczka K, Neumann J, von Cramon DY (2008) Neural networks in frontotemporal dementia—a meta-analysis. *Neurobiol Aging* 29: 418–26.
66. Hornberger M, Wong S, Tan R, Irish M, Piguet O, et al. (2012) In vivo and post-mortem memory circuit integrity in frontotemporal dementia and Alzheimer's disease. *Brain* 135: 3015–25.
67. Wagner AD, Shannon BJ, Kahn I, Buckner RL (2005) Parietal lobe contributions to episodic memory retrieval. *Trends Cogn Sci* 9: 445–53.
68. Cavanna AE, Trimble MR (2006) The precuneus: a review of its functional anatomy and behavioural correlates. *Brain* 129: 564–83.
69. Horstmann A, Frisch S, Jentsch RT, Müller K, Villringer A, et al. (2010) Resuscitating the heart but losing the brain: brain atrophy in the aftermath of cardiac arrest. *Neurology* 74: 306–12.
70. Vann SD, Aggleton JP, Maguire EA (2009) What does the retrosplenial cortex do? *Nat Rev Neurosci* 10: 792–802.
71. Cabeza R, Nyberg L (2000) *Imaging cognition II: An empirical review of 275 PET and fMRI studies*. *J Cogn Neurosci* 12: 1–47.
72. Fletcher PC, Henson RN (2001) Frontal lobes and human memory: insights from functional neuroimaging. *Brain* 124: 849–81.
73. Kim H (2011) Neural activity that predicts subsequent memory and forgetting: a meta-analysis of 74 fMRI studies. *Neuroimage* 54: 2446–61.
74. Tekin S, Cummings JL (2002) Frontal-subcortical neuronal circuits and clinical neuropsychiatry: an update. *J Psychosom Res* 53: 647–54.
75. Abe K, Inokawa M, Kashiwagi A, Yanagihara T (1998) Amnesia after a discrete basal forebrain lesion. *J Neurol Neurosurg Psychiatry* 65: 126–30.

76. Goldenberg G, Schuri U, Grömminger O, Arnold U (1999) Basal forebrain amnesia: does the nucleus accumbens contribute to human memory? *J Neurol Neurosurg Psychiatry* 67: 163–8.
77. Juva K, Sulkava R, Erkinjuntii T, Ylikoski R, Valvanne J, et al. (1995) Usefulness of the Clinical Dementia Rating Scale in the screening of dementia. *Int Psychogeriatr* 7: 17–24.
78. Alstott J, Breakspear M, Hagmann P, Cammoun L, Sporns O (2009) Modeling the impact of lesions in the human brain. *PLoS Comput Biol* 5: e1000408.
79. Sporns O (2009) *Networks of the Brain*. Cambridge, MA: MIT Press.
80. Buckner RL, Sepulcre J, Talukdar T, Krienen FM, Liu H, et al. (2009) Cortical hubs revealed by intrinsic functional connectivity: mapping, assessment of stability, and relation to Alzheimer's disease. *J Neurosci* 29: 1860–73.