

## Research Article

# Identification of the First *De Novo* *UBIADI* Gene Mutation Associated with Schnyder Corneal Dystrophy

**Benjamin R. Lin, Ricardo F. Frausto, Rosalind C. Vo, Stephan Y. Chiu, Judy L. Chen, and Anthony J. Aldave**

Stein Eye Institute, David Geffen School of Medicine at UCLA, 100 Stein Plaza, Los Angeles, CA 90095-7003, USA

Correspondence should be addressed to Anthony J. Aldave; [aldave@jsei.ucla.edu](mailto:aldave@jsei.ucla.edu)

Received 24 January 2016; Revised 10 May 2016; Accepted 12 May 2016

Academic Editor: Vishal Jhanji

Copyright © 2016 Benjamin R. Lin et al. This is an open access article distributed under the Creative Commons Attribution License, which permits unrestricted use, distribution, and reproduction in any medium, provided the original work is properly cited.

**Purpose.** To report the identification of the first *de novo* *UBIADI* missense mutation in an individual with Schnyder corneal dystrophy (SCD). **Methods.** A slit lamp examination was performed on a 47-year-old woman without a family history of corneal disorders. The proband's parents, two sisters, and son were also examined and genomic DNA from all six individuals was collected. The exons and exon-intron boundaries of *UBIADI* were screened using Sanger sequencing. Identified mutations were screened for in 200 control chromosomes. *In silico* analysis predicted the impact of identified mutations on protein function and structure. **Results.** Slit lamp examination of the proband revealed findings consistent with SCD. Corneas of the family members appeared unaffected. Screening of *UBIADI* in the proband identified a novel heterozygous c.308C>T mutation, predicted to encode the missense amino acid substitution p.(Thr103Ile). This mutation was not identified in any of the family members or in 200 control chromosomes and was predicted to be damaging to normal protein function and structure. **Conclusions.** We present a novel heterozygous *de novo* missense mutation in *UBIADI*, p.(Thr103Ile), identified in a patient with classic clinical features of SCD. This highlights the value of genetic testing in clinical diagnostic settings, even in the absence of a positive family history.

## 1. Introduction

Schnyder corneal dystrophy (SCD; MIM #21800) was first described by Van Went and Wibaut in 1924 and later by Schnyder in 1929 [1, 2]. Formerly known as Schnyder crystalline corneal dystrophy or SCCD, it was subsequently renamed in 2008 by the International Committee for the Classification of Corneal Dystrophies to SCD, as only about half of affected patients demonstrate corneal crystals on examination [3–5]. SCD is a rare autosomal dominant disorder associated with the development of central corneal stromal opacification with or without subepithelial or anterior stromal crystalline deposition in the first or second decade of life [4, 6, 7]. Subsequently, affected individuals develop bilateral arcus lipoides and progressive stromal opacification [4, 6, 7].

While SCD has been associated with systemic hyperlipidemia, individuals with SCD have both normal and abnormal serum lipid, lipoprotein, and cholesterol levels, and Lisch and colleagues have found a lack of correlation between serum

lipid levels and corneal findings [6, 8–14]. Nevertheless, a localized (i.e., corneal) dysregulation of lipid/cholesterol transport or aberrant lipid metabolism is thought to be a possible molecular cause of the SCD phenotype [6, 15]. In 1996, Shearman et al. performed genome-wide linkage analysis on two Scandinavian families with SCD and demonstrated linkage to a locus on chromosome 1 (1p.34.1–36) [16]. Eleven years later, Orr and colleagues and Weiss and colleagues independently identified mutations in several highly conserved regions of the *UbiA prenyltransferase domain containing 1* (*UBIADI*) gene, located on chromosome 1p36 in eleven families [15, 17]. To date, a total of 25 mutations have been reported, but none were demonstrated to be spontaneous (Table 1). Herein, we report the first confirmed *de novo* mutation associated with SCD. As such, we recommend that molecular genetic analysis be considered to confirm or refute a suspected clinical diagnosis of SCD, even in the setting of a negative family history.

TABLE 1: Mutations in *UBIADI* associated with Schnyder corneal dystrophy.

Exon	Nucleotide change	Amino acid change	Number of families reported	References
1	c.289G>A	p.(Ala97Thr)	1	[18]
1	c.290G>A	p.(Gly98Ser)	1	[19]
1	c.305A>G	p.(Asn102Ser)	20	[15, 17, 18, 20–23]
1	c.308C>T	p.(Thr103Ile)	1	<i>Current study</i>
1	c.334G>A	p.(Asp112Asn)	1	[18]
1	c.335A>G	p.(Asp112Gly)	1	[17]
1	c.353A>G	p.(Asp118Gly)	1	[21]
1	c.355A>G	p.(Arg119Gly)	1	[17, 20]
1	c.361C>G	p.(Leu121Val)	1	[20]
1	c.361C>T	p.(Leu121Phe)	3	[21, 24]
1	c.365T>A	p.(Val122Glu)	1	[18]
1	c.365T>G	p.(Val122Gly)	1	[18]
1	c.511T>C	p.(Ser171Pro)	1	[21, 25]
1	c.521A>G	p.(Tyr174Cys)	1	[26]
1	c.524C>T	p.(Thr175Ile)	2	[17, 21]
1	c.529G>C	p.(Gly177Arg)	1	[15]
1	c.529G>A	p.(Gly177Arg)	2	[21]
2	c.530G>A	p.(Gly177Glu)	6*	[27]
2	c.542A>G	p.(Lys181Arg)	1	[26]
2	c.556G>A	p.(Gly186Arg)	1	[21]
2	c.563T>A	p.(Leu188His)	1	[18]
2	c.695A>G	p.(Asn232Ser)	1	[17]
2	c.697A>C	p.(Asn233His)	1	[26]
2	c.708C>G	p.(Asp236Glu)	1	[21]
2	c.710T>A	p.(Ile245Asn)	1	[23]
2	c.718G>A	p.(Asp240Asn)	1	[28]

\* Four of the six families may be related and thus may be due to a common founder effect.

## 2. Materials and Methods

Informed consent was obtained from all subjects according to the tenets of the Declaration of Helsinki. The Institutional Review Board at The University of California, Los Angeles, approved the study described herein (UCLA IRB # 11-000020).

**2.1. Slit Lamp Imaging, DNA Collection, and Preparation.** Slit lamp biomicroscopic imaging was performed for the proband and five family members to determine their affected status (Figure 1). After obtaining informed consent, saliva samples were collected from each using the Oragene Saliva Collection Kit (DNA Genotek, Inc., Ontario, Canada). Genomic DNA was extracted from buccal epithelial cells using the Oragene prepIT•L2P protocol for genomic DNA purification (DNA Genotek, Inc.). In addition, genomic DNA samples previously collected from 100 healthy individuals were used as controls.

**2.2. Polymerase Chain Reaction (PCR).** The exonic regions of *UBIADI* were amplified using previously described primers [20]. Reactions were performed in 25  $\mu$ L reaction volumes containing 5  $\mu$ L of KAPA GC/A buffer (Kapa Biosystems, Wilmington, MA), 25 mM dNTPs, 1 unit of Kapa 2G Robust DNA polymerase (Kapa Biosystems), 60  $\mu$ M of each forward and reverse primer, 20–40 ng of DNA, and 17.5  $\mu$ L of nuclease-free H<sub>2</sub>O. Reactions were cycled with a denature step at 98°C for 3 min followed by 36 cycles with 98°C for 25 s, 54°C for 30 s, 72°C for 30 s, and a final extension step at 72°C for 10 min. An iCycler or C1000 Touch Thermal Cycler (Bio-Rad, Hercules, CA) was used to perform thermal cycling.

**2.3. DNA Sequencing.** Prior to sequencing, the amplicon was purified by treating 15–30 ng of amplicon with 5 units of Exonuclease I and 0.5 units of Shrimp Alkaline Phosphatase (USB Corp., Cleveland, OH) followed by incubating at 37°C for 15 min and inactivating at 80°C for 15 min. Sequencing was performed in 10  $\mu$ L reaction volumes containing BigDye Terminator Mix v3.1 (Applied Biosystems, Foster City, CA), BDx64 enhancing buffer (MCLAB, San Francisco, CA), and 0.2  $\mu$ L primer (10 pmoles/ $\mu$ L) following the manufacturer's (MCLAB) instructions. Sequences were viewed using Chromas (Technelysium, South Brisbane, Australia), and the *UBIADI* exon and exon-intron junction sequences were compared with the NCBI reference sequence for *UBIADI* (Genbank Accession: NM\_013319.2). Identified sequence variants were annotated according to the HGVS nomenclature guidelines (<http://www.hgvs.org/mutnomen/>).

**2.4. Paternity Testing.** DNA samples were submitted to the University of California, Los Angeles Clinical Microarray Core, for paternity testing. The proband and her parents were genotyped for a sex associated marker, amelogenin, and 10 different short tandem repeats using the Geneprint 10 System (Promega Corporation, Madison, WI).

**2.5. In Silico Protein Analysis.** A webtool, DNA to protein ([http://www.ebi.ac.uk/Tools/st/emboss\\_transeq/](http://www.ebi.ac.uk/Tools/st/emboss_transeq/)), was used to generate an *in silico* translation of the mutant *UBIADI* sequence. PredictProtein was used to predict the number of polynucleotide and protein binding sites of *UBIADI* protein (<https://www.predictprotein.org/>). PolyPhen-2, SIFT, and PANTHER were used to predict the functional impact of identified variants [29–31]. Multiple sequence alignment of *UBIADI* orthologs from multiple species was performed using MUSCLE (<http://www.ebi.ac.uk/Tools/msa/muscle/>), and ConSurf (<http://consurf.tau.ac.il/>) was used to calculate the evolutionary conservation score for all *UBIADI* residues [32, 33]. Seven different modeling algorithms (Impred, PHDhtm, TMHMM 2.0, HMMTOP 2.0, MEMSAT3, MEMSAT-SVM, and TMSEG) were used to predict the transmembrane helices of both wild type and mutant forms of *UBIADI* [34–40]. TOPO2 (<http://www.sacs.ucsf.edu/TOPO2/>) was used to generate a consensus image from the various different transmembrane helix predictions.

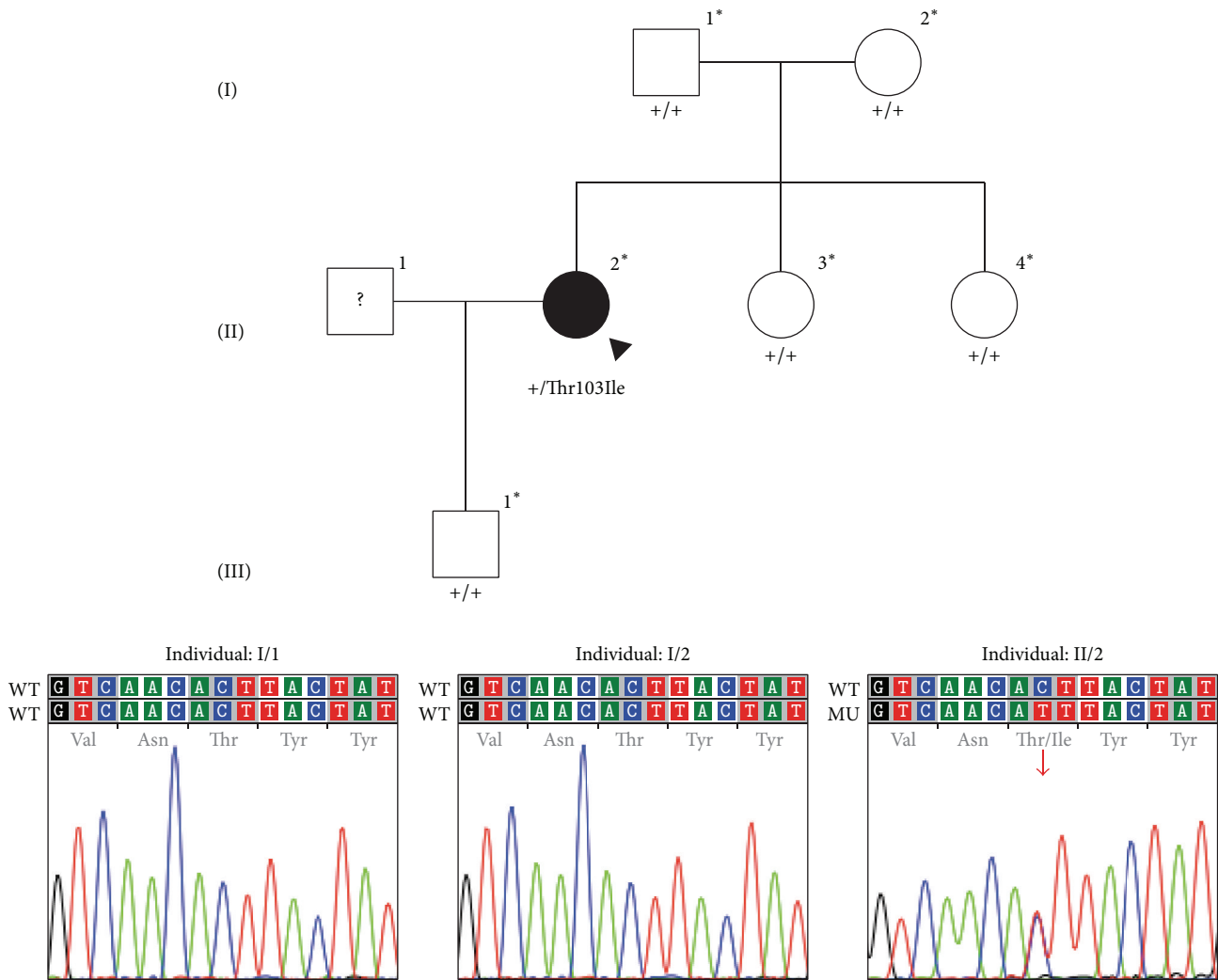


FIGURE 1: Pedigree of family with Schnyder corneal dystrophy. Filled symbols represent affected individuals and unfilled symbols represent unaffected individuals. Question marks indicate individuals of unknown affected status. The proband is designated with a black arrowhead. Asterisks indicate individuals in whom *UBIADI* screening was performed; below these symbols, the results are given as wild type (+) or the identified mutation is shown. Chromatograms demonstrate the results of sequencing *UBIADI* in the parents of the proband and the proband, in whom the identified heterozygous c.308C>T missense mutation is indicated with a red arrow.

### 3. Results

**3.1. Clinical Findings.** A 47-year-old woman of Japanese (father) and European (mother) descent was referred to the authors (Rosalind C. Vo and Anthony J. Aldave) for evaluation of bilateral corneal opacities associated with crystalline deposits. Her only visual complaint was that of glare, which worsened in the evening. The proband’s medical history was negative for genu valgum but was significant for hyperlipidemia and hypothyroidism, for which she was taking levothyroxine. Her total cholesterol was 230 mg/dL, including a low-density lipoprotein level of 125 mg/dL and an increased high-density lipoprotein level of 90 mg/dL. Her mother also had a history of hyperlipidemia, but the patient denied a family history of a corneal disorder or decreased vision. Corrected Snellen visual acuities measured 20/20- in both eyes. Slit lamp biomicroscopic examination demonstrated bilateral arcus

lipoides and central corneal, discoid, and pan-stromal opacification (Figure 2). Superficial crystalline deposits were observed in each cornea, right eye more than left. Neither parent demonstrated crystalline corneal changes or central or peripheral corneal opacification (Figure 2). Similarly, neither of the proband’s siblings nor her son demonstrated any corneal opacities. Out of the 100 control individuals, 26 individuals were of Asian descent, and 74 were of Caucasian descent. In addition, 39 were male and 60 were female. No corneal opacities were seen in any of the 100 control individuals.

**3.2. Genetic Screening.** Both coding exons of *UBIADI* were screened in the proband. A novel heterozygous variant (c.308C>T), which is predicted to encode a missense p.(Thr103Ile) amino acid change, was identified in exon 1 (Figure 1). This variant was not identified in either of

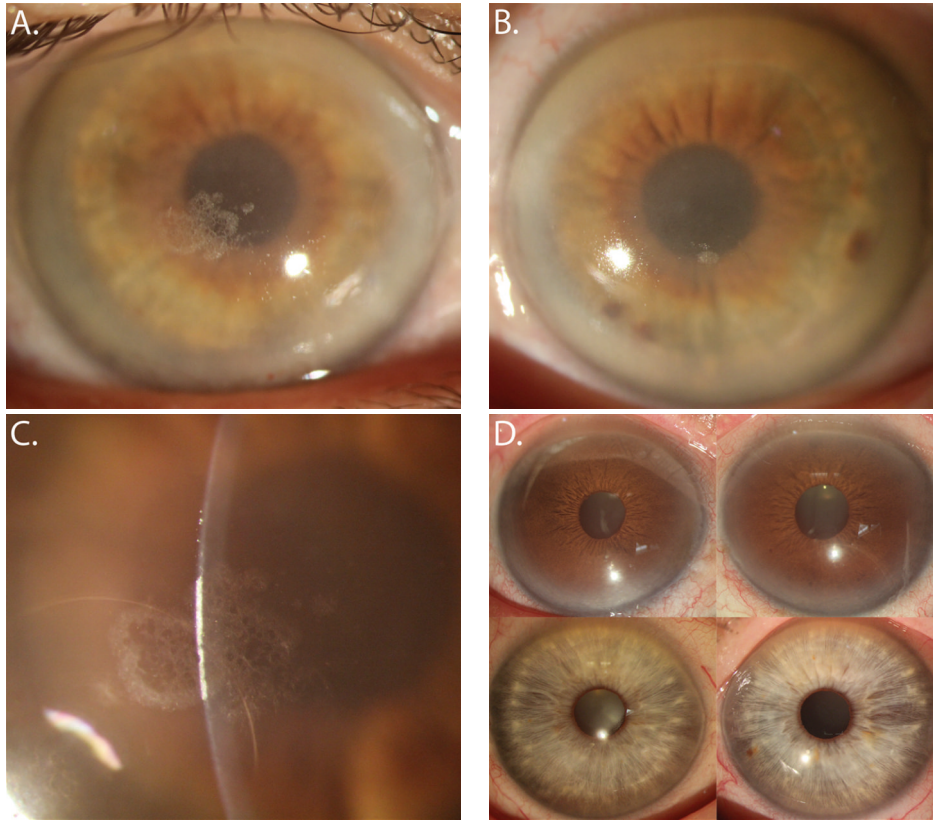


FIGURE 2: Slit lamp photomicrographs of 47-year-old woman with Schnyder corneal dystrophy. (A) Diffuse illumination of the right eye demonstrates arcus lipoides and a central crystalline deposit. (B) Diffuse illumination of the left eye also demonstrates dense arcus lipoides, central discoid haze, and a focal central crystalline deposit overlying the inferior pupillary border. (C) Slit illumination of the right eye demonstrates the subepithelial location of the crystalline deposit. (D) Slit lamp photomicrographs of the proband's father demonstrate arcus senilis but no central stromal opacification in either the right or left eye (top images). The proband's mother's corneas are clear (bottom images).

the proband's parents or in her siblings or offspring (Figure 1). In addition, it was not identified in 200 control chromosomes nor reported in dbSNP 142 or the 1000 Genomes database, which references Ensembl 76. Genotyping of the proband and each of her parents confirmed (with greater than 99.999% certainty) that the proband's mother and father were her biological parents (Table 2) [41].

**3.3. Protein Bioinformatics Analysis.** By *in silico* analysis, the UBIAD1 protein is predicted to have seven protein binding sites and one polynucleotide binding site, none of which include amino acid 103. However, this amino acid is within a conserved casein kinase II phosphorylation site, as well as a cholesterol recognition/interaction amino acid consensus (CRAC) sequence. PolyPhen-2, SIFT, and PANTHER all predict the p.(Thr103Ile) substitution to be likely damaging to protein function. ConSurf calculations assigned amino acid 103 a score of 9, which indicates maximal conservation across species. This is supported by MUSCLE alignment of sequences from 11 different species (Figure 3). The seven different modeling algorithms generated structural models with some resemblance to one another. While the various models did not perfectly agree, there was sufficient similarity

between all of them to generate a consensus model for wild type UBIAD1 protein based on the transmembrane start and stop predictions (Figure 4(a)). Because isoleucine, a highly hydrophobic amino acid, replaces threonine, a polar/hydrophilic amino acid, the p.(Thr103Ile) substitution is predicted to extend the length of the second transmembrane helix to include an additional two residues. This is predicted to move amino acid residues 102 and 103 from their normal extracellular location to being embedded within the plasma membrane (Figure 4(b)).

#### 4. Discussion

Schnyder corneal dystrophy (SCD) has been associated with 25 different mutations in *UBIAD1* in the 54 families in which screening has been reported to date. One mutation, p.(Asn102Ser), has been identified in 20 of these 54 families, which are of Swede-Finn, American, British, Italian, German, Irish, Czech, Chinese-Taiwanese, Japanese, and Polish descent [15, 17, 18, 20–23]. Given the disparate ancestry of the families in which the p.(Asn102Ser) mutation has been identified, the Asn102 residue is considered a hotspot for SCD and likely arose spontaneously in each population in which it

TABLE 2: Genotyping for a sex associated marker, amelogenin (AMEL), and 10 short tandem repeats to confirm paternity and maternity of an individual with Schnyder corneal dystrophy.

Allelic marker	Father (I/1)*		Child (II/2)*		Mother (I/2)*		Random match probability
AMEL	Y	X	X	X	X	X	N/A
CSFIPO	11	10	10	10	10	12	0.112
D13S317	11	9	9	12	12	11	0.085
D16S539	11	9	9	11	11	12	0.089
D21S11	32.2	30	30	28	28	30	0.039
D5S818	11	11	11	12	12	12	0.158
D7S820	12	8	8	9	9	12	0.065
TH01	6	6	6	6	6	9	0.081
TPOX	9	10	10	11	11	11	0.195
VWA	14	17	17	18	18	14	0.062

Note: there is greater than 99.999% percent probability that both parents are the biological parents.

\*IDs in parenthesis refer to pedigree in Figure 1.

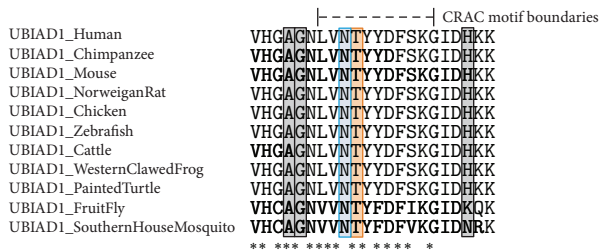


FIGURE 3: MUSCLE alignment of 11 different UBIAD1 homologues showing binding motifs. Shown are excerpts of homologous sequences of 11 different species, corresponding to amino acid residues 93 to 115 in human UBIAD1 protein. The boundaries of the cholesterol recognition/interaction amino acid consensus (CRAC) sequence are denoted by the dashed lines. The Asn102 and Thr103 residues are highlighted in blue and orange, respectively. All other reported mutations in this region associated with SCD are highlighted in gray. An asterisk (\*) indicates residues that are fully conserved across all 11 aligned homologues.

has been identified [21]. Herein, we report a proband in whom the p.(Thr103Ile) mutation involving the adjacent amino acid has been confirmed to have arisen spontaneously. This makes *UBIAD1* only the third gene in which spontaneous mutations have been confirmed to be associated with a corneal dystrophy, in addition to *ZEB1* mutations associated with posterior polymorphous corneal dystrophy 3 [42, 43] and *TGFBI* mutations associated with Reis-Bücklers corneal dystrophy [44, 45], Thiel-Behnke corneal dystrophy [45], granular corneal dystrophy type 2 [46], and lattice corneal dystrophy [47].

Previously published work established that UBIAD1 primarily acts as a mitochondrially localized prenyltransferase and has an active domain from residues 58–333, in which all reported mutations are located [17, 18, 21]. Previous computational modeling has predicted that the Asn102 residue plays a key role in identifying aromatic substrates for prenylation, as well as recognition and stabilization of a variety of other substrates [18]. Work done by Huang in a human UBIAD1 homologue, AfUbiA from *Archaeoglobus fulgidus*, suggests that the Asn102 residue in UBIAD1 (homologue to Asn68 in AfUbiA) is likely to play a critical role in protein function,

acting as part of an  $Mg^{2+}$ /diphosphate binding site that stabilizes the diphosphate on the prenyl donor substrate [48]. The Asn102 residue is reported to be at the boundary of a transmembrane helix, although various modeling algorithms differ in reporting its exact location with respect to the transmembrane region [18, 21, 27, 49].

We propose two potential mechanisms via which the p.(Thr103Ile) mutation, located adjacent to Asn102, leads to UBIAD1 dysfunction and lipid dysregulation. The first is disruption of the cholesterol recognition/interaction amino acid consensus (CRAC) motif in which the p.(Thr103Ile) mutation is located [50]. The CRAC motif is defined as  $(L/V)X_{1-5}-(Y)-X_{1-5}-(K/R)$  and contains three key amino acids: an apolar Leucine (L) or Valine (V) residue, a mandatory central Tyrosine (Y) residue, and a basic Lysine (K) or Arginine (R) residue. In addition to having the three key amino acids, the CRAC motif must be located at the edge of a transmembrane domain or within a transmembrane domain to function properly. Changes to this consensus sequence can lead to cholesterol dysregulation, and it has been shown that ectopic UBIAD1 expression or induction of endogenous UBIAD1 in human cancer cell lines can reduce elevated cholesterol levels [51, 52]. While the p.(Thr103Ile) mutation does not involve one of the three conserved amino acids in the CRAC motif, the motif itself is necessary but not sufficient for optimal cholesterol binding. Analysis of the energy interaction between CRAC motifs and cholesterol shows that nearby amino acids can also play critical roles in modulating cholesterol binding [53, 54]. Given that nearby amino acids can affect cholesterol binding, changes to amino acids within the CRAC motif itself likely also affect binding. Therefore, the p.(Thr103Ile) mutation, while not eliminating the CRAC domain entirely, may damage the ability of UBIAD1 to bind to substrates.

While Lisch et al. concluded that there is no correlation between serum lipid levels and progression of corneal opacifications in SCD, local (i.e., in cornea) cholesterol and lipid metabolism may play a role [6]. This is supported by the finding of significantly elevated cholesterol levels localized to the cornea relative to blood serum levels following intravenous injection of radioactively labeled cholesterol prior to

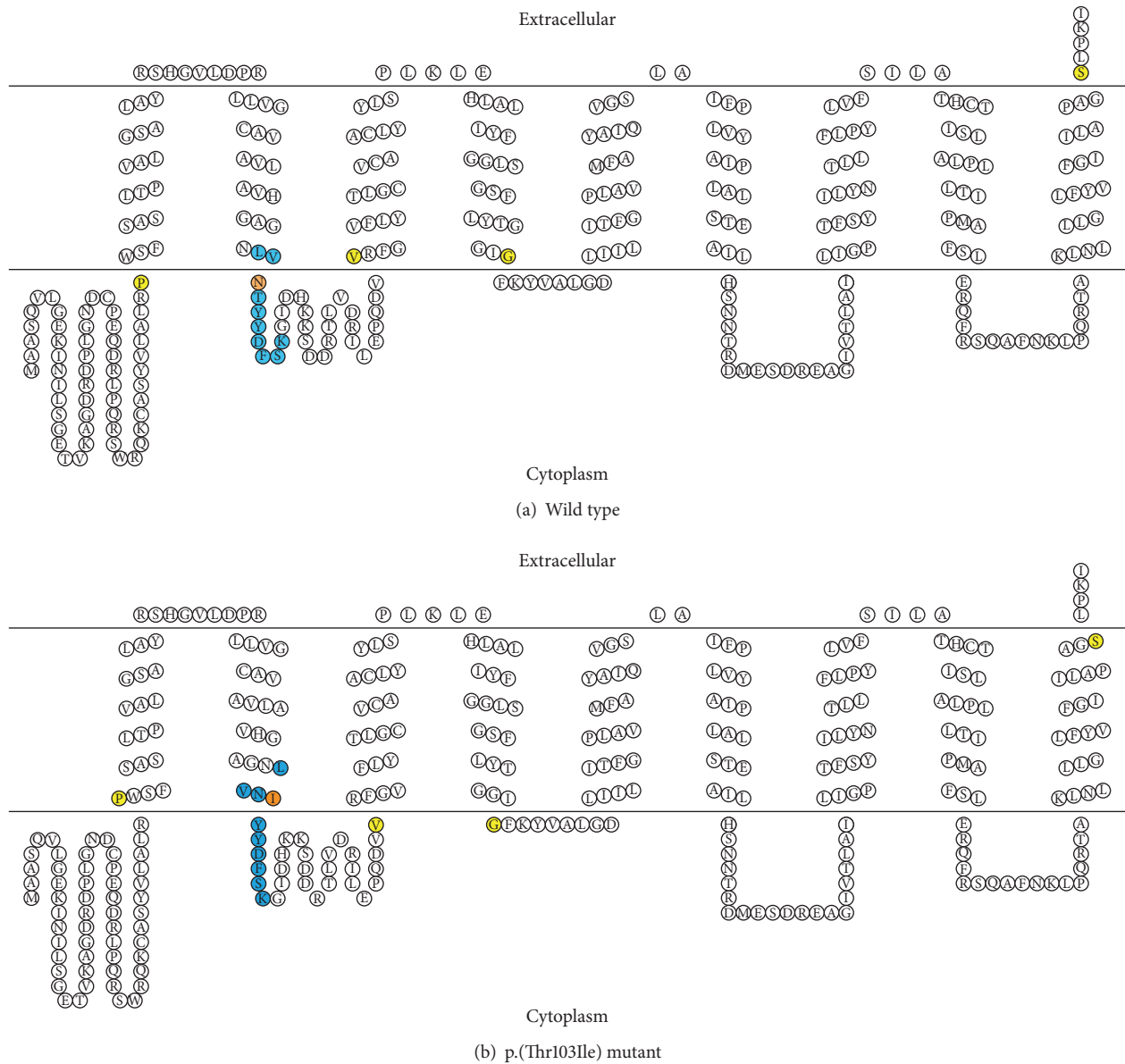


FIGURE 4: Consensus model of the wild type and mutant UBIAD1 protein. This shows the consensus figure from seven different modeling algorithms. (a) Wild type UBIAD1 protein. (b) UBIAD1 protein with a p.(Thr103Ile) substitution. The CRAC binding domain is shown in blue, and amino acid 103 is shown in orange. All other amino acids affected by structural changes to transmembrane helices caused by the p.(Thr103Ile) substitution are shown in yellow. Note that the folds seen in the diagram do not represent alpha-helices or beta sheets. Rather, they indicate residue location in relation to the cell membrane.

penetrating keratoplasty (PK) [55]. In addition, elevated levels of apolipoproteins A-I, A-II, and E, which are constituents of HDL, have been demonstrated via immunostaining of corneas from individuals with SCD [56]. The fact that the levels of apolipoprotein B, an LDL constituent, are not elevated suggests that a disruption of the HDL metabolic machinery is involved in the pathogenesis of SCD. As the proband that we report had increased serum levels of HDL, but not LDL, one could hypothesize that the p.(Thr103Ile) mutation negatively impacts the binding of UBIAD1 to substrates through interfering with the function of the CRAC domain, disrupting

the HDL metabolic pathway within the cornea, and leading to localized cholesterol deposition.

The second potential mechanism via which the p.(Thr103Ile) mutation may lead to UBIAD1 dysfunction and lipid dysregulation involves the disturbance of the wild type transmembrane helix. A number of computational models of the human UBIAD1 protein have been previously published, reporting between seven and ten transmembrane helices in varied locations in the UBIAD1 protein [17, 18, 20, 21, 27, 49, 51]. Although the seven different computational algorithms that we utilized also yielded varied results, each predicted

a transmembrane helix in the wild type UBIAD1 protein with a consensus model running from residues 83 to 101. Performing the same modeling with the p.(Thr103Ile) substitution yielded a consensus model with a transmembrane helix running from residues 83 to 103, resulting in localization of the Asn102 and the mutant Ile103 residues within the transmembrane region and disrupting protein function [57]. However, we acknowledge that while computational modeling of protein structure is useful, it is only as reliable as the algorithm on which it is based. Ultimately, any *in silico* analysis should be validated by experimentation. While the structure of a UBIAD1 homologue, AfUbiA from *Archaeoglobus fulgidus*, has been determined via X-ray crystallography, the structure of human UBIAD1 protein has yet to be determined [48]. In order to fully elucidate the functional impact of the mutations associated with SCD, including the novel p.(Thr103Ile) missense mutation that we report, it is necessary to first have comprehensive structural data for the UBIAD1 protein.

In summary, we report the first *de novo* mutation in UBIAD1 associated with Schnyder corneal dystrophy. As the diagnosis of SCD was questioned given the absence of a family history, this case highlights the utility of genetic testing to confirm or refute a presumptive clinical diagnosis. The identified missense p.(Thr103Ile) mutation involves a conserved residue and is predicted to be damaging to the function of the encoded protein, possibly by disrupting the cholesterol recognition/interaction amino acid consensus (CRAC) motif or altering the structure of the transmembrane helix.

## Competing Interests

The authors have no commercial or conflicting interests with the work published herein.

## Acknowledgments

Funding is provided by National Eye Institute Grants R01 EY022082 (Anthony J. Aldave) and P30 EY000331 (core grant) and an unrestricted grant from Research to Prevent Blindness.

## References

- [1] J. M. Van Went and F. Wibaut, "En Zeldzame erfelijke hoornvliessandoening," *Nederlands Tijdschrift voor Geneeskunde*, vol. 68, pp. 2996–2997, 1924.
- [2] W. F. Schnyder, "Mitteilung über einen neuen typus von familiärer hornhauterkrankung," *Schweizerische Medizinische Wochenschrift*, vol. 10, pp. 559–571, 1929.
- [3] J. S. Weiss, H. U. Møller, W. Lisch et al., "The IC3D classification of the corneal dystrophies," *Cornea*, vol. 27, no. 2, pp. S1–S83, 2008.
- [4] J. S. Weiss, "Schnyder's dystrophy of the cornea: a Swede-Finn connection," *Cornea*, vol. 11, no. 2, pp. 93–101, 1992.
- [5] J. S. Weiss, "Schnyder crystalline dystrophy sine crystals. Recommendation for a revision of nomenclature," *Ophthalmology*, vol. 103, no. 3, pp. 465–473, 1996.
- [6] W. Lisch, E. G. Weidle, C. Lisch, T. Rice, E. Beck, and G. Utermann, "Schnyder's dystrophy. Progression and metabolism," *Ophthalmic Paediatrics and Genetics*, vol. 7, no. 1, pp. 45–56, 1986.
- [7] J. S. Weiss, "Visual morbidity in thirty-four families with Schnyder crystalline corneal dystrophy (an American Ophthalmological Society thesis)," *Transactions of the American Ophthalmological Society*, vol. 105, pp. 616–648, 2007.
- [8] B. J. Barchiesi, R. H. Eckel, and P. P. Ellis, "The cornea and disorders of lipid metabolism," *Survey of Ophthalmology*, vol. 36, no. 1, pp. 1–22, 1991.
- [9] A. J. Bron, H. P. Williams, and M. E. Carruthers, "Hereditary crystalline stromal dystrophy of Schnyder. I. Clinical features of a family with hyperlipoproteinaemia," *British Journal of Ophthalmology*, vol. 56, no. 5, pp. 383–399, 1972.
- [10] N. Ehlers and M. E. Matthiessen, "Hereditary crystalline corneal dystrophy of Schnyder," *Acta Ophthalmologica*, vol. 51, no. 3, pp. 316–324, 1973.
- [11] M. Ghosh and C. McCulloch, "Crystalline dystrophy of the cornea: a light and electron microscopic study," *Canadian Journal of Ophthalmology*, vol. 12, no. 4, pp. 321–329, 1977.
- [12] M. M. Rodrigues, H. S. Kruth, J. H. Krachmer, and R. Willis, "Unesterified cholesterol in Schnyder's corneal crystalline dystrophy," *American Journal of Ophthalmology*, vol. 104, no. 2, pp. 157–163, 1987.
- [13] R. O. Weller and F. C. Rodger, "Crystalline stromal dystrophy: histochemistry and ultrastructure of the cornea," *British Journal of Ophthalmology*, vol. 64, no. 1, pp. 46–52, 1980.
- [14] R. Sysi, "Xanthoma corneae as hereditary dystrophy," *The British Journal of Ophthalmology*, vol. 34, no. 6, pp. 369–374, 1950.
- [15] J. S. Weiss, H. S. Kruth, H. Kuivaniemi et al., "Mutations in the UBIAD1 gene on chromosome short arm 1, region 36, cause Schnyder crystalline corneal dystrophy," *Investigative Ophthalmology and Visual Science*, vol. 48, no. 11, pp. 5007–5012, 2007.
- [16] A. M. Shearman, T. J. Hudson, J. M. Andresen et al., "The gene for Schnyder's crystalline corneal dystrophy maps to human chromosome 1p34.1-p36," *Human Molecular Genetics*, vol. 5, no. 10, pp. 1667–1672, 1996.
- [17] A. Orr, M.-P. Dubé, J. Marcadier et al., "Mutations in the UBIAD1 gene, encoding a potential prenyltransferase, are causal for Schnyder crystalline corneal dystrophy," *PLoS ONE*, vol. 2, no. 8, article e685, 2007.
- [18] M. L. Nickerson, B. N. Kostihina, W. Brandt et al., "UBIAD1 mutation alters a mitochondrial prenyltransferase to cause schnyder corneal dystrophy," *PLoS ONE*, vol. 5, no. 5, Article ID e10760, 2010.
- [19] Y. Jing, C. Liu, J. Xu, and L. Wang, "A novel UBIAD1 mutation identified in a Chinese family with Schnyder crystalline corneal dystrophy," *Molecular Vision*, vol. 15, pp. 1463–1469, 2009.
- [20] V. S. Yellore, M. A. Khan, N. Bourla et al., "Identification of mutations in UBIAD1 following exclusion of coding mutations in the chromosome 1p36 locus for Schnyder crystalline corneal dystrophy," *Molecular Vision*, vol. 13, pp. 1777–1782, 2007.
- [21] J. S. Weiss, H. S. Kruth, H. Kuivaniemi et al., "Genetic analysis of 14 families with Schnyder crystalline corneal dystrophy reveals clues to UBIAD1 protein function," *American Journal of Medical Genetics, Part A*, vol. 146, no. 7, pp. 952–964, 2008.
- [22] C. Du, Y. Li, L. Dai, L. Gong, and C. Han, "A mutation in the UBIAD1 gene in a Han Chinese family with Schnyder corneal dystrophy," *Molecular Vision*, vol. 17, pp. 2685–2692, 2011.
- [23] A. K. Nowinska, E. Wylegala, S. Teper et al., "Phenotype-genotype correlation in patients with schnyder corneal dystrophy," *Cornea*, vol. 33, no. 5, pp. 497–503, 2014.

- [24] H. Al-Ghadeer, J. Y. Mohamed, and A. O. Khan, "Schnyder corneal dystrophy in a Saudi Arabian family with heterozygous UBIAD1 mutation (p.L121F)," *Middle East African Journal of Ophthalmology*, vol. 18, no. 1, pp. 61–64, 2011.
- [25] J. S. Mehta, E. N. Vithana, D. Venkataraman et al., "Surgical management and genetic analysis of a Chinese family with the S171P mutation in the UBIAD1 gene, the gene for Schnyder corneal dystrophy," *British Journal of Ophthalmology*, vol. 93, no. 7, pp. 926–931, 2009.
- [26] A. Kobayashi, K. Fujiki, A. Murakami, and K. Sugiyama, "In vivo laser confocal microscopy findings and mutational analysis for Schnyder's crystalline corneal dystrophy," *Ophthalmology*, vol. 116, no. 6, pp. 1029–1037.e1, 2009.
- [27] M. L. Nickerson, A. D. Bosley, J. S. Weiss et al., "The UBIAD1 prenyltransferase links menaquinone-4 [corrected] synthesis to cholesterol metabolic enzymes," *Human Mutation*, vol. 34, no. 2, pp. 317–329, 2013.
- [28] J. S. Weiss, C. Wiaux, V. Yellore et al., "Newly reported p.asp240asn mutation in ubiad1 suggests central discoid corneal dystrophy is a variant of schnyder corneal dystrophy," *Cornea*, vol. 29, no. 7, pp. 777–780, 2010.
- [29] I. A. Adzhubei, S. Schmidt, L. Peshkin et al., "A method and server for predicting damaging missense mutations," *Nature Methods*, vol. 7, no. 4, pp. 248–249, 2010.
- [30] P. C. Ng and S. Henikoff, "Predicting deleterious amino acid substitutions," *Genome Research*, vol. 11, no. 5, pp. 863–874, 2001.
- [31] H. Mi, A. Muruganujan, and P. D. Thomas, "PANTHER in 2013: modeling the evolution of gene function, and other gene attributes, in the context of phylogenetic trees," *Nucleic Acids Research*, vol. 41, no. 1, pp. D377–D386, 2013.
- [32] R. C. Edgar, "MUSCLE: multiple sequence alignment with high accuracy and high throughput," *Nucleic Acids Research*, vol. 32, no. 5, pp. 1792–1797, 2004.
- [33] H. Ashkenazy, E. Erez, E. Martz, T. Pupko, and N. Ben-Tal, "ConSurf 2010: calculating evolutionary conservation in sequence and structure of proteins and nucleic acids," *Nucleic Acids Research*, vol. 38, no. 2, pp. W529–W533, 2010.
- [34] B. Rost, P. Fariselli, and R. Casadio, "Topology prediction for helical transmembrane proteins at 86% accuracy," *Protein Science*, vol. 5, no. 8, pp. 1704–1718, 1996.
- [35] E. L. Sonnhammer, G. von Heijne, and A. Krogh, "A hidden Markov model for predicting transmembrane helices in protein sequences," in *Proceedings of the International Conference on Intelligent Systems for Molecular Biology*, vol. 6, pp. 175–182, 1998.
- [36] G. E. Tusnady and I. Simon, "The HMMTOP transmembrane topology prediction server," *Bioinformatics*, vol. 17, no. 9, pp. 849–850, 2001.
- [37] M. Cserzo, F. Eisenhaber, B. Eisenhaber, and I. Simon, "On filtering false positive transmembrane protein predictions," *Protein Engineering*, vol. 15, no. 9, pp. 745–752, 2002.
- [38] D. T. Jones, W. R. Taylor, and J. M. Thornton, "A model recognition approach to the prediction of all-helical membrane protein structure and topology," *Biochemistry*, vol. 33, no. 10, pp. 3038–3049, 1994.
- [39] D. T. Jones, "Improving the accuracy of transmembrane protein topology prediction using evolutionary information," *Bioinformatics*, vol. 23, no. 5, pp. 538–544, 2007.
- [40] T. Nugent and D. T. Jones, "Transmembrane protein topology prediction using support vector machines," *BMC Bioinformatics*, vol. 10, article 159, 2009.
- [41] National Institute of Justice (NIJ), *The Future of Forensic DNA Testing: Predictions of the Research and Development Working Group of the National Commission on the Future of DNA Evidence*, NIJ, Washington, DC, USA, 2000.
- [42] M. S. Jang, A. N. Roldan, R. F. Frausto, and A. J. Aldave, "Posterior polymorphous corneal dystrophy 3 is associated with agenesis and hypoplasia of the corpus callosum," *Vision Research*, vol. 100, pp. 88–92, 2014.
- [43] C. M. Krafchak, H. Pawar, S. E. Moroi et al., "Mutations in TCF8 cause posterior polymorphous corneal dystrophy and ectopic expression of COL4A3 by corneal endothelial cells," *American Journal of Human Genetics*, vol. 77, no. 5, pp. 694–708, 2005.
- [44] T. Y. Tanhehco, D. E. Eifrig Jr., I. R. Schwab, C. J. Rapuano, and G. K. Klintworth, "Two cases of Reis-Bücklers corneal dystrophy (granular corneal dystrophy type III) caused by spontaneous mutations in the TGFBI gene," *Archives of Ophthalmology*, vol. 124, no. 4, pp. 589–593, 2006.
- [45] X. C. Zhao, H. Nakamura, S. Subramanyam et al., "Spontaneous and inheritable R555Q mutation in the TGFBI/BIGH3 gene in two unrelated families exhibiting bowman's layer corneal dystrophy," *Ophthalmology*, vol. 114, no. 11, pp. e39–e46, 2007.
- [46] W. Bao and G. K. Klintworth, "A spontaneous mutation (R124H) in the TGFBI gene in a sporadic case of granular corneal dystrophy type II. The Association for Research in Vision and Ophthalmology," *Investigative Ophthalmology & Visual Science*, vol. 43, p. 1738, 2002.
- [47] P. Romero, M. Moraga, and L. Herrera, "Different phenotypes of lattice corneal dystrophy type I in patients with 417c>T (R124C) and 1762A>G (H572R) mutations in Tgfbi (BIGH3)," *Molecular Vision*, vol. 16, pp. 1601–1609, 2010.
- [48] H. Huang, "Structure of a membrane-embedded prenyltransferase homologous to UBIAD1," *PLoS Biology*, vol. 12, no. 7, article e1001911, 2014.
- [49] X. Wang, D. Wang, P. Jing et al., "A novel Golgi retention signal RPWS for tumor suppressor UBIAD1," *PloS ONE*, vol. 8, no. 8, Article ID e72015, 2013.
- [50] H. Li and V. Papadopoulos, "Peripheral-type benzodiazepine receptor function in cholesterol transport. Identification of a putative cholesterol recognition/interaction amino acid sequence and consensus pattern," *Endocrinology*, vol. 139, no. 12, pp. 4991–4997, 1998.
- [51] W. J. Fredericks, T. McGarvey, H. Wang et al., "The bladder tumor suppressor protein TERE1 (UBIAD1) modulates cell cholesterol: implications for tumor progression," *DNA and Cell Biology*, vol. 30, no. 11, pp. 851–864, 2011.
- [52] W. J. Fredericks, J. Sepulveda, P. Lal et al., "The tumor suppressor TERE1 (UBIAD1) prenyltransferase regulates the elevated cholesterol phenotype in castration resistant prostate cancer by controlling a program of ligand dependent SXR target genes," *Oncotarget*, vol. 4, no. 7, pp. 1075–1092, 2013.
- [53] J. Fantini and F. J. Barrantes, "How cholesterol interacts with membrane proteins: an exploration of cholesterol-binding sites including CRAC, CARC, and tilted domains," *Frontiers in Physiology*, vol. 4, article 31, 2013.
- [54] C. J. Baier, J. Fantini, and F. J. Barrantes, "Disclosure of cholesterol recognition motifs in transmembrane domains of the human nicotinic acetylcholine receptor," *Scientific Reports*, vol. 1, article 69, 2011.
- [55] R. P. Burns, W. Connor, and I. Gipson, "Cholesterol turnover in hereditary crystalline corneal dystrophy of Schnyder," *Transactions of the American Ophthalmological Society*, vol. 76, pp. 184–196, 1978.



- [56] P. M. Gaynor, W.-Y. Zhang, J. S. Weiss, S. I. Skarlatos, M. M. Rodrigues, and H. S. Kruth, "Accumulation of HDL apolipoproteins accompanies abnormal cholesterol accumulation in Schnyder's corneal dystrophy," *Arteriosclerosis, Thrombosis, and Vascular Biology*, vol. 16, no. 8, pp. 992–999, 1996.
- [57] O. D. Monera, T. J. Sereda, N. E. Zhou, C. M. Kay, and R. S. Hodges, "Relationship of sidechain hydrophobicity and alpha-helical propensity on the stability of the single-stranded amphipathic alpha-helix," *Journal of Peptide Science*, vol. 1, no. 5, pp. 319–329, 1995.