



# Effects of Real-Time (Sonification) and Rhythmic Auditory Stimuli on Recovering Arm Function Post Stroke: A Systematic Review and Meta-Analysis

**Shashank Ghai\***

*Institute for Sports Science, Leibniz University Hannover, Hannover, Germany*

## OPEN ACCESS

### Edited by:

Michael H. Thaut,  
University of Toronto, Canada

### Reviewed by:

Laurien Hakvoort,  
Artez Institute of the Arts, Netherlands  
Shannon Kay Deletoile,  
Frost School of Music, University of  
Miami, United States

### \*Correspondence:

Shashank Ghai  
shashank.ghai@  
sportwiss.uni-hannover.de

### Specialty section:

This article was submitted to  
Stroke,  
a section of the journal  
Frontiers in Neurology

**Received:** 13 April 2018

**Accepted:** 05 June 2018

**Published:** 13 July 2018

### Citation:

Ghai S (2018) Effects of Real-Time (Sonification) and Rhythmic Auditory Stimuli on Recovering Arm Function Post Stroke: A Systematic Review and Meta-Analysis. *Front. Neurol.* 9:488. doi: 10.3389/fneur.2018.00488

**Background:** External auditory stimuli have been widely used for recovering arm function post-stroke. Rhythmic and real-time auditory stimuli have been reported to enhance motor recovery by facilitating perceptuomotor representation, cross-modal processing, and neural plasticity. However, a consensus as to their influence for recovering arm function post-stroke is still warranted because of high variability noted in research methods.

**Objective:** A systematic review and meta-analysis was carried out to analyze the effects of rhythmic and real-time auditory stimuli on arm recovery post stroke.

**Method:** Systematic identification of published literature was performed according to PRISMA guidelines, from inception until December 2017, on online databases: Web of science, PEDro, EBSCO, MEDLINE, Cochrane, EMBASE, and PROQUEST. Studies were critically appraised using PEDro scale.

**Results:** Of 1,889 records, 23 studies which involved 585 (226 females/359 males) patients met our inclusion criteria. The meta-analysis revealed beneficial effects of training with both types of auditory inputs for Fugl-Meyer assessment (Hedge's  $g$ : 0.79), Stroke impact scale (0.95), elbow range of motion (0.37), and reduction in wolf motor function time test ( $-0.55$ ). Upon further comparison, a beneficial effect of real-time auditory feedback was found over rhythmic auditory cueing for Fugl-meyer assessment (1.3 as compared to 0.6). Moreover, the findings suggest a training dosage of 30 min to 1 h for at least 3–5 sessions per week with either of the auditory stimuli.

**Conclusion:** This review suggests the application of external auditory stimuli for recovering arm functioning post-stroke.

**Keywords:** cueing, stability, rehabilitation, cognitive-motor interference, hemiplegia, spasticity, paresis

## INTRODUCTION

According to World health organization, stroke accounts as the third main cause of disability across the world (1). The incidence of stroke related disability have almost doubled in the developing countries in the past decade (2, 3). The disability affects basic day to day life activities (4), which further increase dependency (5), anxiety, depression (6), social isolation (7), and promote a poor quality of life (8, 9). Moreover, the disability inflicts substantial economic burden on patients (10).

Typically, patients affected from stroke exhibit sensorimotor dysfunctions on the contralateral side of the affected brain region (11). These deficits can be exhibited focally, segmentally, unilaterally, or bilaterally (12). The symptoms are typically characterized by progressive inefficient movement synergy patterns (13), abnormal muscle tone (14), force production (15), compromised dexterity (16), poor coordination (17), and more (18). Moreover, hyper/hypokinetic movement disorders are also common [see Handley et al.(12)]. Additionally, cognitive and sensory dysfunctions are also common in patients with stroke (19). Despite advancements in rehabilitation, poor prognosis in stroke is still prevalent, especially for recovering arm function (5, 20). Studies suggest that upper limb recovery is an important predictor for determining the health status outcome, and quality of life for stroke patients (21, 22).

The poor gross and fine motor performance in upper extremities can be due to abnormal co-contraction of antagonists/agonists (23), disruptions in force production/adaptation (24), and regulation of stretch reflex (15, 25). Besides, these musculoskeletal dysfunctions can considerably impair joint kinematics (26, 27). According to Hara et al. (28) impaired activation of motor units in terms of firing rate and synchronization might result in such deficits. Furthermore, as the disease progresses, these changes increase fatigue (29), reduce coordination (30), and with the progression of time promote development of joint contractures (31), and subluxations/dislocations (32). Likewise, discrepancies in sensory perceptions, memory, cognition, and behavior further impact the prognostic outcome of a stroke patient (33–35).

Neuroimaging studies suggest site specific lesions and silent infarcts at medial temporal lobe (36), gray (37), and white matter (38), further leading to a wide array of cognitive dysfunctions (39) [see Makin, (40) and Sperber and Karnath (41).] Similarly, deficits in corticospinal (42, 43), thalamocortical (44), superior occipito-frontal (41), and superior-longitudinal pathways (45), might overload the already impaired cognitive-motor pathways. Such a constraining impact on the impaired cognitive pathways might increase “internal” conscious monitoring by the patients to control their movements [see movement re-investment (46–48)]. This increase in attention is aimed to safeguard the stability of a movement (49, 50), it retrospectively impairs autonomic execution of a movement and promotes movement failure (46–48). Likewise, dysfunctions in sensory perception could affect perceptuomotor representations in the brain, thereby affecting motor planning and execution (35). Together, these cognitive and sensorimotor dysfunctions affect the prognosis of a stroke patient.

Common treatment strategies to curb cognitive motor dysfunctions in stroke patients include training with virtual-reality (51), mental imagery (52), biofeedback (53), physical therapy (54), exercise (55), prosthesis (56–58), dual-task priority training, and more (59). Recently studies have tried to enhance the stroke recovery by simultaneously addressing the sensory deficits with motor rehabilitation by applying external sensory stimulation as a neuro-prosthetic (59–62). Studies have analyzed the effects of different sensory stimuli in auditory, visual and tactile domain on motor performance (59, 61, 62). However, the literature predominantly supports the beneficial role of auditory stimuli (50, 63, 64). The main reasons which underlie the beneficial effects are thought to be multifaceted. Firstly, rich neuroanatomical interconnectivity has been reported between auditory and motor cortex (65–67). Here, inference can be drawn from literature evaluating auditory startle reflex on animal models (68, 69). Studies using Double-labeling experiments have revealed that cochlear root neurons in the auditory nerve can project bilaterally to sensorimotor paths, including synapsing on reticulospinal neurons (65, 68, 70). Likewise, patterns of thalamocortical and corticocortical inputs unique to auditory cortex have also been reported [for a detailed review see (71)]. In humans, neuroimaging data confirms the presence of cortico-subcortical network involving putamen, supplementary motor area, premotor cortex, and the auditory cortex especially for perceiving and processing rhythmic auditory stimuli (72–75). Secondly, the human auditory system can consistently perceive auditory cues 20–50 ms faster as compared to its visual and tactile counterparts (76–78). Thirdly, the auditory system has a strong bias to identify temporal patterns of periodicity and structure as compared to other sensory perceptual systems (78–80). For instance, auditory rhythmic perception has been reported to exist well beyond the limits of temporal resolution of visual modalities i.e., when periodicities are presented at a rate of ~300–900 ms (80, 81).

In the literature, however, rhythmic auditory cueing (67), and real-time kinematic auditory feedback (82), also termed as sonification, are the most widely studied approaches in upper limb stroke rehabilitation. Both the methods possess differential influence over neurophysiological and musculoskeletal domains. Firstly, rhythmic auditory cueing can be defined as repetitive isosynchronous stimulations applied with an aim to simultaneously synchronize motor execution (83, 84). Here, neuroimaging data for rhythmic auditory stimuli suggests facilitated activations in premotor cortex, insula, cuneus, supplementary motor area, cerebellum, and basal ganglia (73, 80, 85–87). Moreover, training with rhythmic auditory cueing has been reported to modulate neuromagnetic  $\beta$  oscillations (88, 89), biological motion perception (82, 90), auditory-motor imagery (91–93), shape variability in musculoskeletal activation patterns (94), cortical reorganization, neural-plasticity (95, 96), and also movement specific re-investment (97). Real-time kinematic auditory feedback on the other hand is a comparatively new approach. Such type of an intervention involves mapping of movement parameters on to the sound components, such as pitch, amplitude with a very minimal or no latency (82). The feedback has been

reported to alleviate sensory perceptions like proprioception (98), by enhancing sensorimotor representation while facilitating activations in action observation system (90), and inducing neural plasticity (99). Moreover, the feedback has been reported by Effenberg et al. (82) to extend the benefits of discrete rhythmic auditory cueing stimuli. Here, the authors suggest that the continuous flow of information might allow a participant to better perceive their movement amplitudes and positioning, thereby resulting in development of both feedback and feed-forward models (82). Moreover, by allowing additional influence over the action observation system the real-time auditory stimuli might also enrich the internal stimulation of the executed movement (50, 82, 90). This methodology involves delivering action relevant auditory feedback, where the characteristics of stimuli (e.g., frequency, amplitude) are mapped to the specific joint kinematics in real-time, for an example see (98). Schmitz et al. (90) in a neuroimaging study reported that observation of a convergent audio (sonification)-visual feedback led to enhanced activations in fronto-parietal networks, action observation system i.e., superior temporal sulcus, Brodmann area 44, 6, insula, precentral gyrus, cerebellum, thalamus and basal ganglia (90). The authors mentioned that the multimodal nature of the stimuli can enhance the activation in areas associated with biological motion perception and in sub-cortical structures involving striatal-thalamic frontal motor loop. This then might improve perceptual analysis of a movement thereby resulting in efficient motor planning and execution (90).

Till date, no study has analyzed the influence of real-time auditory feedback on upper limb recovery post-stroke. Moreover, no study has compared the influence of rhythmic and real-time auditory stimuli on upper limb recovery post stroke. This information might serve to be an important source of information for future research and for developing efficient rehabilitation protocols in stroke community. Only four systematic reviews have analyzed the influence of rhythmic auditory stimulations on arm recovery post stroke (100–103), in which only two reviews included a statistical meta-analysis (102, 103). In these studies limitations persisted in terms of meta-analysis approach i.e., no heterogeneity analysis. Therefore, interpretation of results from the statistical analyses might indicate biasing. Therefore, the aim of the present systematic review and meta-analysis is to develop a state of knowledge where both qualitative and quantitative data for different auditory stimuli delivery methods can be interpreted for the use of stroke patients and medical practitioners alike. Moreover, a meta-analysis approach will be used to determine specific training dosage for auditory stimuli in recovering arm function post-stroke.

## METHODS

This systematic review and meta-analysis was conducted according to the guidelines outlined by PRISMA statement: Preferred Reporting Items for Systematic Reviews and Meta-analysis (104).

## Data Sources and Search Strategy

Academic databases: Web of science, PEDro, EBSCO, MEDLINE, Cochrane central register of controlled trials, EMBASE, and PROQUEST were searched from inception until December 2017. A sample search PICOS strategy for the review has been provided in (Table 1) (105).

## Data Extraction

Upon selection for review, the following data were extracted from each article; author, date of publication, selection criteria, sample size, sample description (gender, age, health status, duration of stroke), applied intervention, characteristics of auditory stimuli i.e., rhythmic/real-time, applied dual-task (if any), outcome measures, results, and conclusions. The data were then summarized and tabulated (Table 2).

The inclusion criteria for the studies was (i) The experimental studies were either randomized controlled trials, cluster randomized controlled trials or controlled clinical trials; (ii) The included studies reported reliable and valid measures to analyse arm function, and/or kinematic parameters; (iii) The included studies analyzed subjective analysis of stroke outcome; (iv) The included studies scored  $\geq 4$  score on the PEDro methodological quality scale; (v) The experiments conducted on human participants; (vi) The included studies were published in a peer-reviewed academic journal, conference proceeding; (vii) The included studies were published in English, Hindi, Punjabi, and German languages.

## Quality and Risk of Bias Assessment

The quality of the included experimental studies was assessed using the PEDro methodological quality scale (127). This scale consists of 11 items which address both external, internal validity. Moreover, its interpretation can effectively detect potential bias with fair to good reliability, and validity (127). A blinded scoring for the methodological quality was carried out by the primary reviewer (S.G). If any ambiguous issues were there concerning rating of the studies. These issues were discussed with a second reviewer (Dr. Ishan Ghai). Included studies were interpreted according to a scoring of 9–10, 6–8, and 4–5 considered as “excellent,” “good,” and “fair” quality, respectively (128).

## Data Analysis

For a better interpretation of the intervention effects, a meta-analysis was included (129). The absence of presence of heterogeneity asserted the use of either fixed or random effect meta-analysis (130), respectively. A narrative synthesis of the findings structured around the intervention, population characteristics, duration of stroke, auditory signal characteristics, methodological quality, and type of outcome are provided (Table 2). A meta-analysis was conducted between pooled homogenous studies using CMA (Comprehensive meta-analysis V 2.0, USA). Heterogeneity between the pooled studies was assessed and interpreted using  $I^2$  statistics. The data in this present review was systematically distributed and pooled for each variable. Thereafter, forest plots with effect size and 95% confidence intervals were plotted. The effect sizes were weighted

**TABLE 1** | Sample search strategy EMBASE.

PICOS	DATABASE	EMBASE
	<b>DATE</b>	<b>10/12/2017</b>
	<b>STRATEGY</b>	<b>#1 AND #2 AND #3 AND #4 AND #5 AND #6</b>
P	#1	("Stroke" OR "Apoplexy" OR "CVA" OR "Cerebral Stroke" OR "Cerebrovascular accident" OR "Cerebrovascular Accident, Acute" OR "Cerebrovascular Apoplexy" OR "Cerebrovascular Stroke" OR "Stroke, Acute" OR "Vascular Accident, Brain" OR "Hemiplegia, Crossed" OR "Hemiplegia, Flaccid" OR "Hemiplegia, Spastic" OR "Hemiplegia, Transient" OR "Monoplegia" OR "Upper Extremity Paresis" OR "Muscular Paresis" OR "Muscle Paresis" OR "Monoparesis" OR "Hemiparesis")/de OR (Stroke OR Apoplexy OR CVA OR Cerebral Stroke OR Cerebrovascular accident OR Cerebrovascular Accident, Acute OR Cerebrovascular Apoplexy OR Cerebrovascular Stroke OR Stroke, Acute OR Vascular Accident, Brain OR Hemiplegia, Crossed OR Hemiplegia, Flaccid OR Hemiplegia, Spastic OR Hemiplegia, Transient OR Monoplegia OR Upper Extremity Paresis OR Muscular Paresis OR Muscle Paresis OR Monoparesis OR Hemiparesis);ti,ab
I	#2	("rhythmic auditory cueing" OR "rhythmic auditory cueing" OR "rhythmic acoustic cueing" OR "rhythmic auditory entrainment" OR "metronome cueing" OR "metronome" OR "rhythmic metronome cueing" OR "acoustic stimulus" OR "acoustic cueing" OR "acoustic cueing" OR "external stimuli" OR "external cueing" OR "external cueing" OR "music therapy" OR "Neurological music therapy" OR "tempo" OR "beat" OR "rhythm" OR "RAC" OR "NMT" OR "real-time auditory feedback" OR "sonification")/de OR (rhythmic auditory cueing OR rhythmic auditory cueing OR rhythmic acoustic cueing OR rhythmic auditory entrainment OR metronome cueing OR metronome OR rhythmic metronome cueing OR acoustic stimulus OR acoustic cueing OR acoustic cueing OR external stimuli OR external cueing OR external cueing OR music therapy OR Neurological music therapy OR tempo OR beat OR rhythm OR RAC OR NMT OR real-time auditory feedback OR sonification);ti,ab
C	n/a	n/a
O	#3	("Range of Motion" OR "Passive Range of Motion" OR "Joint Range of Motion" OR "Joint Flexibility" "elbow" OR "shoulder" OR "wrist" OR "Fugl Meyer Assessment" OR "Fugl-Meyer assessment for upper extremity" OR "FMA" OR "Wolf motor assessment" OR "WMA" OR "Wolf motor test" OR "Nine hole peg test" OR "NHPT" OR "9HPT" OR "Action reach arm test" OR "ARAT" OR "Stroke index scale" OR "SIS" OR "BATRAC" OR "Bilateral arm training with rhythmic auditory cueing" OR "Unilateral arm training with rhythmic auditory cueing" OR "Arm reach training" OR "BBT" OR "Box and block test" OR "Motor activity log" OR "MAL" OR "Cincinnati Stroke Scale" OR "Los Angeles Prehospital Stroke Scale" OR "ABCD Score" OR "Canadian Neurological Scale" OR "European Stroke Scale" OR "Hemispheric Stroke Scale" OR "NIH Stroke Scale" OR "Modified Rankin Scale" OR "Stroke Specific Quality of Life Measure" OR "Health Survey SF-36" OR "Health Survey SF-12")/de OR (Range of Motion OR Passive Range of Motion OR Joint Range of Motion OR Joint Flexibility elbow OR shoulder OR wrist OR Fugl Meyer Assessment OR Fugl-Meyer assessment for upper extremity OR FMA OR Wolf motor assessment OR WMA OR Wolf motor test OR Nine hole peg test OR NHPT OR 9HPT OR Action reach arm test OR ARAT OR Stroke index scale OR SIS OR BATRAC OR Bilateral arm training with rhythmic auditory cueing OR Unilateral arm training with rhythmic auditory cueing OR Arm reach training OR BBT OR Box and block test OR Motor activity log OR MAL OR Cincinnati Stroke Scale OR Los Angeles Prehospital Stroke Scale OR ABCD Score OR Canadian Neurological Scale OR European Stroke Scale OR Hemispheric Stroke Scale OR NIH Stroke Scale OR Modified Rankin Scale OR Stroke Specific Quality of Life Measure OR Health Survey SF-36 OR Health Survey SF-12);ti,ab
S	#6	("intervention study" OR "cohort analysis" OR "longitudinal study" OR "cluster analysis" OR "crossover trial" OR "cluster analysis" OR "randomized trial" OR "major clinical study")/de OR (longitudinal OR cohort OR crossover trial OR cluster analysis OR randomized trial OR clinical trial OR controlled trial);ti,ab
	#4	("rehabilitation" OR "treatment" OR "rehab" OR "management" OR "therapy" OR "physiotherapy" OR "physical therapy" OR "prevention" OR "risk prevention")/de OR (rehabilitation OR treatment OR rehab OR management OR therapy OR physiotherapy OR physical therapy OR prevention OR risk prevention);ti,ab
	#5	("age groups" OR "adolescent" OR "young" OR "elderly" OR "old" AND ("gender" OR "male" OR "female")/de OR [age groups OR adolescent OR young OR elderly OR old AND (gender OR male OR female)];ti,ab

and reported as Hedge's  $g$  (131). Thresholds for interpretation of effect sizes are as follows; a standard mean effect size of 0 meant no intervention effect, negative effect size meant a negative intervention effect, and a positive effect size meant a positive intervention effect. Further, a mean effect size of 0.2 was interpreted as a *small* effect, 0.5 interpreted as a *medium* effect, and 0.8 interpreted as a *large* effect (132). Interpretation of heterogeneity made from  $I^2$  statistics was as following: 0–0, 25, 75% was interpreted as negligible, moderate, and substantial heterogeneity, respectively. The alpha level was set at 95%.

## RESULTS

### Characteristics of Included Studies

A detailed search criterion has been demonstrated in **Figure 1**. Out of 1,889 studies, only 23 studies qualified our inclusion criteria. A total of 385 studies could not be included in the manuscript due to limitations in access by University's search database. The author (S.G) made attempts to contact the respective corresponding authors for retrieving the manuscripts. Although these studies could not be included in the review, the abstracts for all the studies were individually screened by

TABLE 2 | Effects of auditory stimuli on arm function post-stroke.

Author	Research question(s)/hypothesis	Sample description, age: (M ± S.D)	PEDro	Disease duration	Assessment tools	Research design	Auditory stimuli characteristics	Conclusion
Bang (106)	Effect of R-af on arm function in patients affected from stroke	Exp: 4F, 6M (61.3 ± 4.8) Ct: 5F, 5M (58.2 ± 5.1)	9	Exp: 8.9 ± 3.1 years Ct: 10.3 ± 3.7 years	ARAT, FMA, motor activity log (quality of movement, amount of use) and modified Ashworth scale	Pre-test, modified constraint induced movement therapy with/without R-af for 1 h/day, 5 days/week for 4 weeks, post-test	R-af (proportional to reduced pressure by shoulder on the sensor) Frequency faded off with progression from every 1/3rd trial	Significant enhancement in ARAT, FMA, motor activity log (quality of movement, amount of use), modified ashworth scale after training with R-af and in Exp as compared to Ct
Scholz et al. (107)	Effects of R-af on gross motor functions on participants affected from stroke (right hemiparesis).	Exp: 1F (59), 1M (85) Ct: 2M (61.5 ± 3.5)	4	-	FMA, ARAT, BBT, 9-HPT, and SIS	Patients moved their arms in X axis: Brightness mapped, increased a 3D R-af space, for 9 days from left to right Y axis: Pitch mapped, increased from bottom to up Z axis: Volume, increased when closed other in SIS to the participant	Exp: Enhancements were observed for participants in FMA, ARAT, 9-HPT, and SIS Ct: No enhancements were observed for, but minimally for one participants in FMA, and the other in SIS	
Malcolm et al. (108)	Effect of RAC on arm kinematics in patients affected from stroke	5M (72.8 ± 6.5)	4	0.7 ± 0.4 years	Movement time, reach velocity, wolf motor function test, FMA, and motor activity log	Pre-test, 1-h session followed by 2h of home training, 3 times/week for 2 weeks with RAC and reaching performed in sagittal, frontal and diagonal planes, post-test	RAC at patients preferred pace of movement	Significantly enhanced reaching velocity, FMA, and motor activity log after training with RAC Significantly reduced reaching time, wolf motor function test performance time after training from RAC
Speth (109)	Effect of RAC on arm reaching in patients affected from stroke	8 stroke patients	4	-	BBT for (paretic/non-paretic side)	BBT performance with/without RAC i.e., waltz music, metronome	RAC (200 bpm), waltz music (200 bpm) cueing	Enhanced performance for BBT with waltz music->RAC->no feedback for both paretic and non-paretic arms
Scholz et al. (60)	Effects of R-af on gross motor functions on participants affected from stroke (right hemiparesis).	Exp: 7F, 8M (68.8 ± 13.6) Ct: 4F, 6M (72.2 ± 8.4)	6	Exp: 32.5 days Ct: 28 days	FMA, ARAT, BBT, 9-HPT, and SIS	Patients moved their arms in X axis: Brightness mapped, increased a 3D sonification space, for 10 days of sonification training (30 min/day).	Y axis: Pitch mapped, increased from bottom to up Z axis: Volume, increased when closed and 9-HPT to the participant	Exp: Significant enhancements were observed for participants in movement smoothness, FMA, SIS as compared to Ct Enhancements were observed in ARAT, BBT Ct: No significant enhancements were observed post sham training
van Delden et al. (110)	Effects of RAC on arm reaching in patients affected from stroke	Exp: 8F, 11M (62.6 ± 9.8) Ct I: 3F, 16M (56.9 ± 12.7) Ct II: 8F, 14M (59.8 ± 13.8)	7	Exp: 7.8 ± 4.9 weeks Ct I: 9.2 ± 6.8 weeks Ct II: 11.1 ± 6.8 weeks	ARAT, motricity index, FMA, 9-HPT, Erasmus modification of Nottingham sensory assessment, motor activity log test and SIS	Pre-test, BATRAC (Exp), modified constrained induced movement therapy (Ct I), conventional therapy (Ct II), for 60min session, 3 times/week, post-test, 6 weeks follow up post-test	RAC (rhythmic flexion-extension at the wrist joint)	Significant enhancement in ARAT with BATRAC No differences in between Exp, Ct I, Ct II

(Continued)

TABLE 2 | Continued

Author	Research question(s)/hypothesis	Sample description, age: (M ± S.D)	PEDro	Disease duration	Assessment tools	Research design	Auditory stimuli characteristics	Conclusion
Schmitz et al. (111)	Effect of R-af on reaching task in patients affected from stroke	Exp: 1F, 3M (65 ± 14.8) Ct: 3F (56 ± 5.3)	4	-	ARAT, 9HPT, and BBT	i: Reaching and retraction task by affected arm. ii: Patients repositioned a ball on objects of different shapes. Training for 5 days for 5 sessions of 20 min each	Arm velocity: modulates amplitude of sound Elevation angle: modulates frequencies between 133.3 and 266.6 Hz. Radial arm amplitude: modulates brightness	Significant enhancements were observed in BBT for Exp as compared to Ct. Enhancements were observed in 9HPT and ARAT. Ct: No significant enhancements were observed
Kim et al. (112)	Effects of RAC on arm reaching performance in patients affected from stroke	7F, 9M (49.2 ± 17.6)	4	1.9 ± 2.2 years	Movement time, movement unit, elbow extension range of motion by 3D motion detection, triceps, biceps brachii muscle activation and co-contraction ratio from EMG	Repetitive reaching task performed with/without RAC movement from affected arm	RAC at patients preferred pace of	Significant enhancement in elbow range of motion, triceps brachii activation with RAC Significant reduction in co-contraction ratio, movement time and movement unit with RAC
Shahine and Shaishak (113)	Effect of RAC on arm function in patients affected from stroke	Exp: 19F, 21M (61.4 ± 5.5) Ct: 17F, 19M (62.7 ± 3.1)	9	Exp: 2.6 ± 1.8 years Ct: 2.9 ± 0.7 years	FMA and transcutaneous magnetic stimulation eliciting motor evoked potential in paretic abductor pollicis brevis (motor evoked potential resting threshold, central motor conduction time)	Pre-test, BATRAC for 1-h session/day, 3sessions/week, for 8 weeks, post-test	RAC at patients preferred pace of movement (frequency 0.25–1/s)	Significant enhancement in FMA, motor evoked potential amplitude ratio after BATRAC Significant reduction in motor evoked potential resting threshold, central motor conduction time after bilateral arm training with RAC, and in Exp as compared to Ct
Dispa et al. (114)	Effect of RAC on arm reaching in patients affected from stroke	1F, 9M (66 ± 11.1)	8	2.3 ± 2.6 years	Grip lift parameters (preloading-loading phase, maximum grip force, hold ratio, cross correlation coefficient, time shift), digital dexterity, activity limitation manual ability, satisfaction in activities, and participation	Pre-test, post-test after 4 weeks of no-training, unilateral-bilateral (modified BBT) repetitive grip lift task oriented training with RAC for 1-h session, 3 days/week for 4 weeks, post-test at 4 weeks after training, retention measurement after 4 weeks	RAC at patients preferred pace of movement	Reduction in preloading phase of grip lift parameters for the paretic hand after 4 weeks of training and during retention measurement. Enhancement in loading phase of grip lift parameters for the paretic hand after 4 weeks of training and during retention measurement. No effect on grip lift parameters (maximum grip force, hold ratio, cross correlation coefficient, time shift), digital dexterity, activity limitation manual ability, satisfaction in activities, and participation after 4 weeks of training or during retention measurement.
Whitall et al. (115)	Effect of RAC in arm reaching patients affected from stroke	Exp: 16F, 26M (59.8 ± 9.9) Ct: 26F, 24M (57.7 ± 12.5) fMRI: Exp: 10F, 7M (61.2 ± 13.8) Ct: 10F, 11M (54.8 ± 13.1)	6	Exp: 4.5 ± 4.1 years Ct: 4.1 ± 5.2 years	FMA, wolf motor test (time, weight, function, SIS (emotion, hand, strength), isokinetic strength (elbow flexion-extension nonparetic side, elbow extension paretic side) and isometric strength (shoulder extension, wrist flexion-extension nonparetic side, shoulder extension, wrist extension, elbow flexion paretic side)	Pre-test, BATRAC for 1-h session, 3 times/week for 6 weeks, post-test	RAC at patients preferred pace of movement	Significant enhancement in FMA, wolf motor test (weight, function), SIS (hand, strength), isokinetic strength (elbow extension nonparetic side, elbow extension paretic side), isometric strength (shoulder extension, wrist extension nonparetic side, shoulder extension) assessment in Exp after training with RAC Significant reduction in wolf motor test (time) in Exp after training with RAC Significant enhancement in isokinetic strength (elbow flexion nonparetic side), isometric strength (wrist flexion, nonparetic side, wrist extension paretic side) in Exp as compared to Ct

(Continued)

TABLE 2 | Continued

Author	Research question(s)/hypothesis	Sample description, age: (M ± S.D)	PEDro	Disease duration	Assessment tools	Research design	Auditory stimuli characteristics	Conclusion
		Exp: 3.9, 2.7 Ct: 3.3, 2.1						Significant enhancement in activation for ipsilesional precentral, anterior cingulate, postcentral gyri, supplementary motor area in Exp after training with RAC as compared to Ct. Significant enhancement in contralateral superior frontal gyrus in Exp after training with RAC, as compared to Ct
Chouhan and Kumar (116)	Effect of RAC on gait and arm reaching in patients affected from stroke	Exp: 3F, 12M (66.7 ± 5.9) Ct I: 3F, 12M (68.1 ± 4.1) Ct II: 3F, 12M (67.3 ± 5.5)	5	–	Dynamic gait index and FMA	Pre-test, gait, reaching task training with RAC (0% of preferred cadence initially, increased by +10% every week if comfortable for patient; for gait) (Exp) or visual feedback (Ct I) for 2h training, 3 time/week session for 3 weeks, post-tests at 7, 14, 21, 28 days	RAC at 0% and +10% on following weeks of preferred movement pace, and gait (cadence)	Significant enhancements in FMA, dynamic gait index (14, 21, 28 days only) after 7, 14, 21, 28 days of training with RAC and in Exp as compared to Ct II
Secoli et al. (117)	Effect of RAC on tracking task in patients affected from stroke.	Exp: (affect left hemisphere) 8F, 6M (66.3 ± 12.3) Ct: (affect right hemisphere) 1F, 4M (61.8 ± 5) Healthy: 2F, 12M (27 ± 7.5)	4	4.6 ± 1 years	Arm movements with robot assisted force production to execute task in Z dimension Positioning error in Z dimension	Patients performed tracking task with robot assisted device in with/without visual distractor task and/or with/without RAC	Tonal beeps sampled at frequency of 800-Hz and lasting for 0.1 s Frequency manipulated proportionally to vector magnitude of position tracking error within dead-zone. Error direction determined by left and right channel of auditory input	Significant reduction in robot assisted force in Exp when auditory input was delivered, suggesting significant enhancement in arm functioning Significant reduction in robot assisted force for the paretic side as compared to healthy side with RAC No effect on position tracking accuracy
Thielman (118)	Effect of RAC on arm reaching in patients affected from stroke	Exp: 2F, 6M (62.9 ± 6.5) 4 Ct: 4F, 4M (63 ± 9.2)	4	Exp: 2.2 ± 0.7 years Ct: 1.8 ± 1.4 years	Reaching performance scale for near and far targets, FMA, wolf motor function test, shoulder flexion range of motion, motor activity log, grip strength and elbow active range of motion	Pre-test (<5days before training), training for arm reaching with pressure sensor generated auditory feedback (Exp), stabilizer (restrained Ct) on arm reaching for 40-45 minutes' session, 2-3days/week (12 total sessions), post-test (<2days after training)	R-af (proportional to reduced pressure by shoulder on the sensor) Frequency faded off with progression from every 1/3 <sup>rd</sup> trial.	Significant enhancement in reaching performance scale for near-far targets, FMA in Exp after training with R-af Significant reduction in wolf motor function test in Exp after training with R-af Enhancement in shoulder flexion, motor activity log and elbow active range of motion in Exp after training with R-af

(Continued)

TABLE 2 | Continued

Author	Research question(s)/hypothesis	Sample description, age: (M ± S.D)	PEDro	Disease duration	Assessment tools	Research design	Auditory stimuli characteristics	Conclusion
Johannsen et al. (119)	Effect of RAC on arm reaching and gait in patients affected from stroke	Exp I: 3F, 8M (59.5 ± 13.4) Exp II: 3F, 7M (68.1 ± 10.1)	6	5.2 ± 4.2 years	FMA (upper/lower extremity), 10-m walking test, treadmill (step length) and repetitive foot/hand aiming task	Pre-test, BATRAC (arm: Exp I/leg: Exp II) for 45 min session, 2 times/week for 5 weeks, post-test, follow up post-test after 18 weeks	RAC at patients preferred pace of movement (increased at patient's preference) Bilateral training for lower extremities: increased pacing during training from 36.7 ± 6.5 to 45.9 ± 9.5 beats per minute BATRAC: increased pacing during training from 39.8 ± 5.6 to 46.3 ± 5.9 beats per minute	Significant enhancement in treadmill step length on both paretic and non-paretic side after bilateral leg training in Exp II as compared to Exp I (no effects), during immediate follow-up test. No effects in follow up post-test. Enhancement in FMA test for lower extremity in Exp II > Exp I at post-test. No enhancements in follow up post-test upper extremity in Exp I > Exp II at post-test. Enhancement in fugal meyer motor test for No enhancements in follow up post-test Enhancement in treadmill step length on both paretic and non-paretic side after bilateral arm training in Exp I as compared to Exp II for 18 week follow up post-test Enhancement in repetitive foot and arm aiming task on both paretic and non-paretic side after bilateral leg training in Exp II during immediate post-tests. No effects on follow up post-tests
Stoykov et al. (120)	Effects of RAC on arm reaching in patients affected from stroke	Exp I: 3F, 9M (63.8 ± 12.6) Exp II: 5F, 7M (64.7 ± 11.1)	6	Exp I: 9.5 ± 5.4 years Exp II: 10.2 ± 10.1 years	Motor assessment scale (upper arm function, hand movements, upper limb items, advanced hand activities), motor status scale (total, shoulder-elbow, wrist-hand scale), shoulder flexion strength (joint) and wrist flexion-extension strength	Pre-test, arm reach training with bilateral (Exp I), unilateral (Exp II) arm training gradually during training with RAC (for 4 tasks), for 60 minutes' session, 3 times/week for 8 weeks, post-test, RAC (rhythmic flexion-extension at the wrist joint)	RAC at patients preferred pace of movement (0.25-1.5 Hz) incremented during training	Significant enhancement in motor assessment scale (upper arm function, upper limb items) for Exp I. Significant enhancement in motor status scale (total, shoulder-elbow, wrist-hand scale), shoulder flexion strength, wrist flexion-extension strength for Exp I and Exp II. Enhancement in motor assessment scale (advanced hand activities) in Exp I. No differences in motor assessment scale for unilateral arm training for Exp II
Richards et al. (121)	Effects of RAC on arm reaching in patients affected from stroke	5F, 9M (64.4 ± 12.8)	4	5.4 ± 4 years	FMA, wolf motor function test and motor activity log (use, ability)	Pre-test, BATRAC for 1-hour RAC at patients preferred pace of session, 3 times/week, for 6 weeks, post-test		Enhancement in FMA, motor activity log (ability and use) in Exp after training with RAC No effect on wolf motor function test in Exp after training with RAC
Jeong and Kim (122)	Effects of RAC on range of motion, flexibility in patients affected from stroke	Exp: 5F, 11M (68 ± 7.1) Ct: 5F, 12M (62.2 ± 8.1)	4	Exp: 5.4 ± 4.5 years Ct: 7.2 ± 5.3 years	Shoulder flexion, ankle flexion-extension range of motion and back-scratch test for flexibility upwards/downward the affected arm, profile of mood states, relationship change scale and stroke specific quality of life scale	Pre-test, training for motor activities with RAC for 2 hours/ week for 8 weeks (functional ambulatory training), and self-training at home, post-test	RAC (musio) at patients preferred pace of movement	Significant enhancement of range of motion for shoulder flexion, ankle flexion-extension, shoulder flexibility in Exp as compared to Ct, on the affected side. Significant enhancement of mood states, interpersonal relationships in Exp. Enhancement in quality of life in Exp

(Continued)



TABLE 2 | Continued

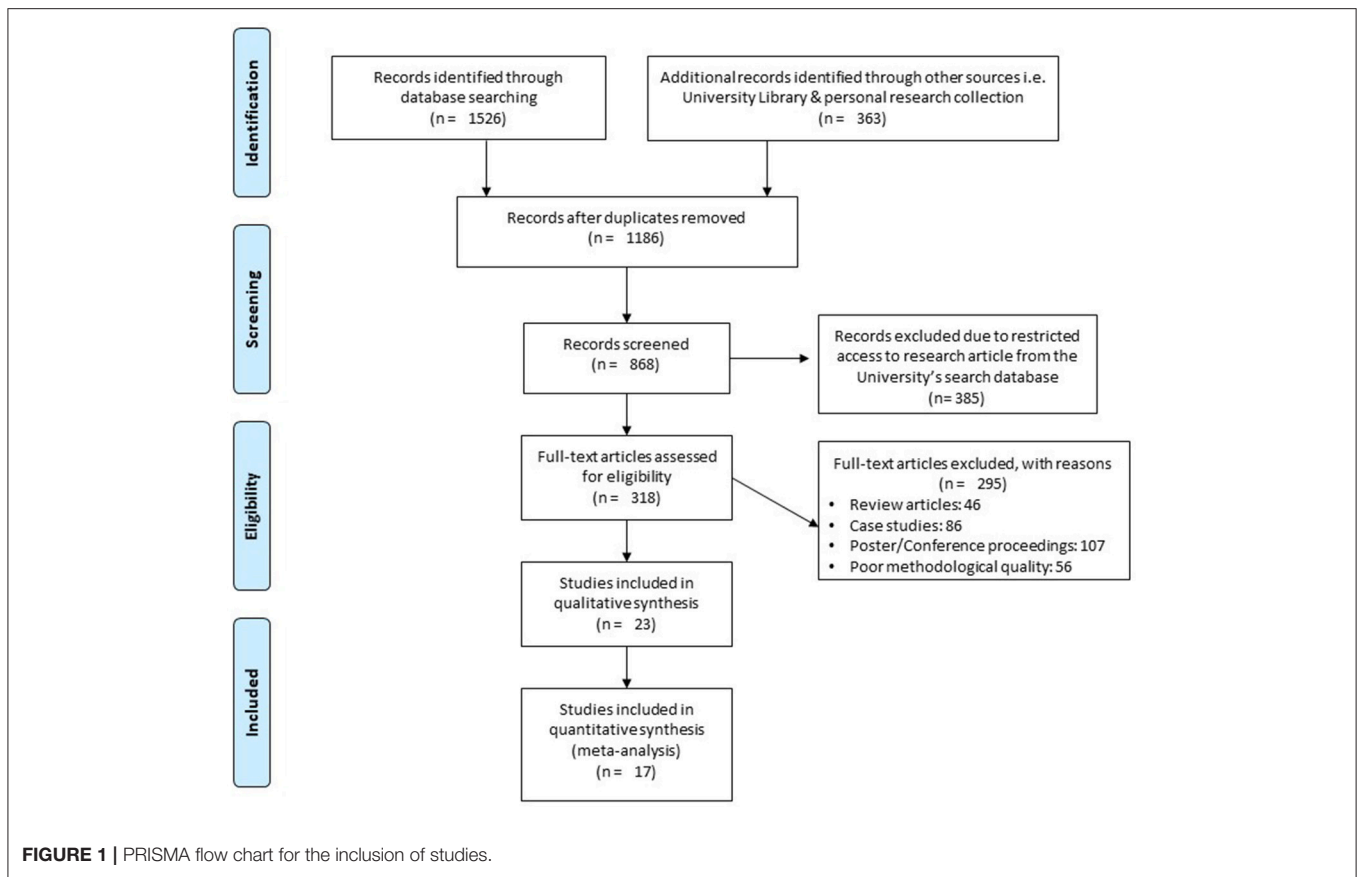
Author	Research question(s)/hypothesis	Sample description, age: (M ± S.D)	PE德罗	Disease duration	Assessment tools	Research design	Auditory stimuli characteristics	Conclusion
Waller and Whittall (123)	Effects of RAC on arm reaching in patients affected from stroke	Right hemisphere lesion: 5 2F, 9M (64.3 ± 10) Left hemisphere lesion: 3F, 8M (68.6 ± 17)		6.5 ± 4.1 years	FMA, University of Maryland questionnaire for stroke, wolf motor arm test (weight, time), active range of motion elbow flexion, shoulder extension and strength (shoulder extension-abduction-adduction, wrist flexion-extension)	Pre-test, BATRAC for 1-h session, 3 times/week for 6 weeks, post-test	RAC at patients preferred pace of movement	Significant enhancement in FMA, University of Maryland questionnaire, active range of motion elbow flexion, shoulder extension (left hemisphere only), strength (shoulder extension (left hemisphere only)-abduction (left only)-adduction, wrist flexion-extension), wolf motor arm test (weight) for stroke for right and left hemisphere lesion patients after training with RAC Significant reduction in wolf motor arm test (time) for patients with left hemisphere lesions as compared right hemisphere lesions after training with RAC Significant enhancement in University of Maryland questionnaire for stroke, wolf motor assessment test (weight, time), active range of motion elbow flexion, shoulder extension, strength (shoulder extension-abduction-adduction, wrist flexion-extension) for patients with left hemisphere lesions as compared to right hemisphere lesions after training with RAC
Luft et al. (95)	Effect of RAC on arm function in patients affected from stroke	Exp: 2F, 7M (63.3 ± 15.3) Ct: 7F, 5M (59.6 ± 10.5)	6	6.2 (3.1–7) years	FMA, shoulder, elbow strength, Wolf motor arm test (weight, time), University of Maryland arm questionnaire for stroke and functional magnetic resonance imaging	Pre-test, BATRAC for 1-h session/day, 3 times/week for 6 weeks, post-test	RAC at patients preferred pace of movement (0.67–0.97 Hz)	After exclusion of 3 patients from Exp: Significant enhancement in FMA in Exp as compared to Ct. Enhancement in shoulder, elbow strength, Wolf motor arm test (weight), University of Maryland arm questionnaire for stroke in Exp as compared to Ct. Reduction in wolf motor arm test (time) in Exp as compared to Ct. Significant enhancements in cerebellum, precentral and postcentral gyri activation after BATRAC
Thaut et al. (124)	Effects of RAC on arm reaching task in patients affected from stroke	8F, 13M (52.7 ± 13.7)	4	–	Wrist trajectory, elbow, shoulder kinematic and optimization model of peak acceleration of wristtime cueing joint coordinates (counterbalanced)	Reaching tasks initiated with/without rhythmic auditory feedback/external cueing (counterbalanced)	RAC at patients preferred pace of movement 1,000Hz square wave tone pattern 50 ms pattern	Significant enhancement in elbow range of motion with RAC Significantly reduced trajectory variability of wrist joint, deviation of acceleration curves from optimal coordinates of wrist joint with RAC No effect on arm timing, shoulder joint displacement

(Continued)

TABLE 2 | Continued

Author	Research question(s)/hypothesis	Sample description, age: (M ± S.D)	PEDro	Disease duration	Assessment tools	Research design	Auditory stimuli characteristics	Conclusion
Maulucci and Eckhouse (125)	Effects of R-af on reaching task in patients affected from chronic stroke	Healthy: 15F, 9M Exp: 3F, 5M Ct: 4F, 4M	4	-	Normal trajectory region for end effectors and reach parameters	Normal participants performed and established generalized repeatability for the experimental groups. Reach trials performed for 42 trials 3 times/week for 6 weeks. Residual performance evaluated post 2 weeks without auditory feedback	Regulated R-af of magnitude and existence of error from normal ellipsoid performance for reach area.	Significant enhancement in trajectory performance for Exp group as compared to Ct group Significant enhancement in both Exp and Ct group for reach trajectory
Whitall et al. (126)	Effects of RAC on arm motor function in patients affected from stroke	6F, 8M (63.7 ± 12.6)	6	5.5 ± 7.9 years	Active, passive range of motion of upper extremity, isometric shoulder, elbow, wrist force (flexion/extension) assessment, FMA, wolf motor function test and modified University of Maryland arm questionnaire for stroke	Pre-test, BATRAC for four 5-min sessions, 3 times a week for 6 weeks, post-test, 8-week retention post-test	RAC at patients preferred pace of movement	Significant enhancement in FMA, Wolf motor function test and modified University of Maryland arm questionnaire for stroke with RAC Significant enhancement in elbow, wrist flexion for paretic and non-paretic arm with RAC Significant enhancement in active range of motion for shoulder extension, wrist flexion and thumb opposition and passive range of motion for wrist flexion on the paretic side with RAC Significant enhancements sustained during the 8-week retention post-test across all range of motion, strength variables and qualitative assessment tools with RAC

ARAT, Action reach arm test; 9HPT, 9-hole peg test; FMA, Fugl Meyer assessment for upper extremity; BBT, Box and block test; EMG, Electromyography; RAC, Rhythmic auditory cueing; BATRAC, Bilateral arm training with rhythmic auditory cueing; R-af, Real-time auditory feedback; SIS, Stroke impact scale; Exp, Experimental group; Ct, Control group; F, Females; M, Males.



the reviewers. The reviewers did not find any counterbalancing data. Data from each included study has been summarized in (Table 2). In the included studies, 10 were randomized controlled trials, and 13 were controlled clinical trials. Interventions in all the included studies were performed by either physiotherapists or medical practitioners. However, two studies in addition to training in clinics/laboratories included a phase of self-training administered by the patients themselves, at home (108, 122). Here, in both the studies guidance was provided by the researchers to the patients via telephone.

## Participants

In total, the 23 included studies evaluated 585 participants of mixed gender population. The included studies had the gender distribution as follows: 226 females, and 359 males. Descriptive statistics concerning age (mean  $\pm$  standard deviation) of the participants were tabulated across the studies. Disease duration of stroke patients has also been mentioned for better interpretation of the reader. However, five studies did not mention these details (107, 109, 111, 124, 125).

## Risk of Bias

Studies scoring  $\geq 4$  on PEDro methodological scale were included in the review. Individual scores have been reported (Table 2, Supplementary Table 1). The average PEDro score for the 23 included studies was computed to be  $5.3 \pm 1.6$  out of 10,

indicating “fair” quality of the overall studies. Here, two studies scored nine (excellent quality), one study scored eight (excellent quality), three studies scored seven (good quality), six studies scored six (good quality), two studies scored five (fair quality), and 11 studies scored four (fair quality) (Table 2, Supplementary Table 1). Figure 2 illustrates risk of bias across the studies. Further, publication bias was analyzed by plotting the evaluated weighted effect size i.e., Hedge’s  $g$  values against standard error (Figure 3). Here, any asymmetry concerning mean in the funnel plot might suggest the presence of publication related bias.

## Meta-Analysis

### Outcomes

The results clearly suggest a positive influence of training with rhythmic auditory cueing and real-time auditory feedback on arm recovery post-stroke. Out of 23 included studies, significant enhancement was reported in 19 studies, three studies reported enhancements, and only one study reported significant reduction in arm function post training with auditory stimuli (Table 2).

## Meta-Analysis Report

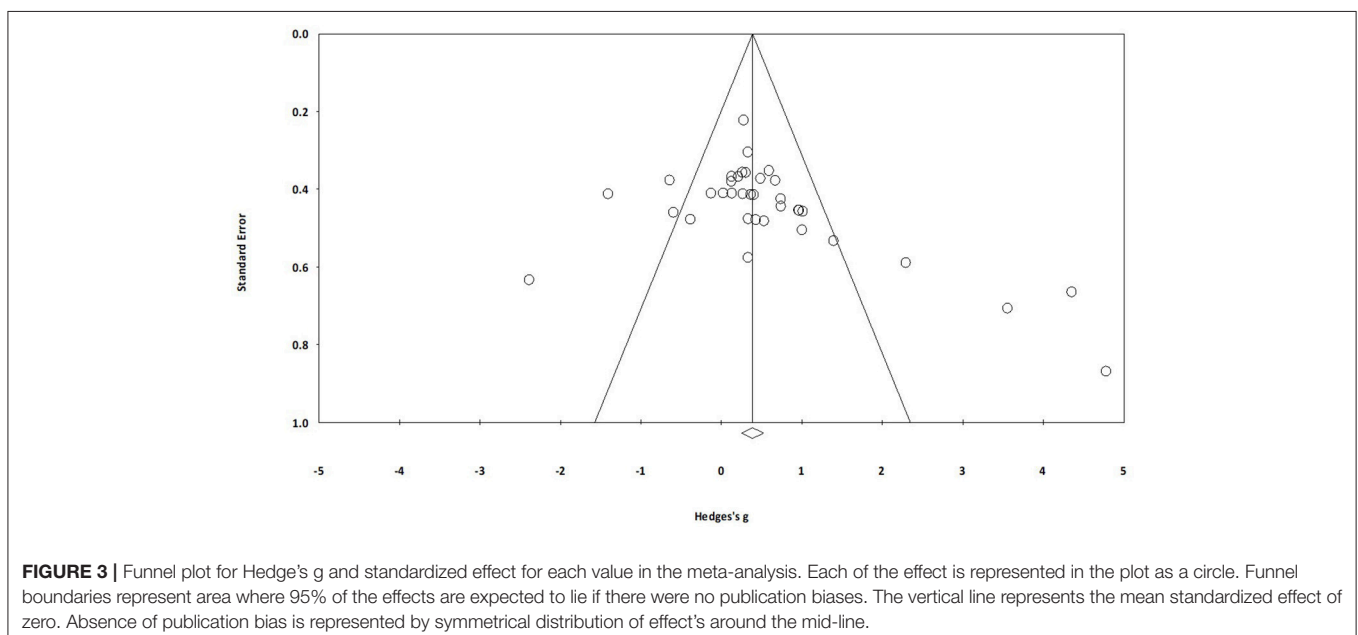
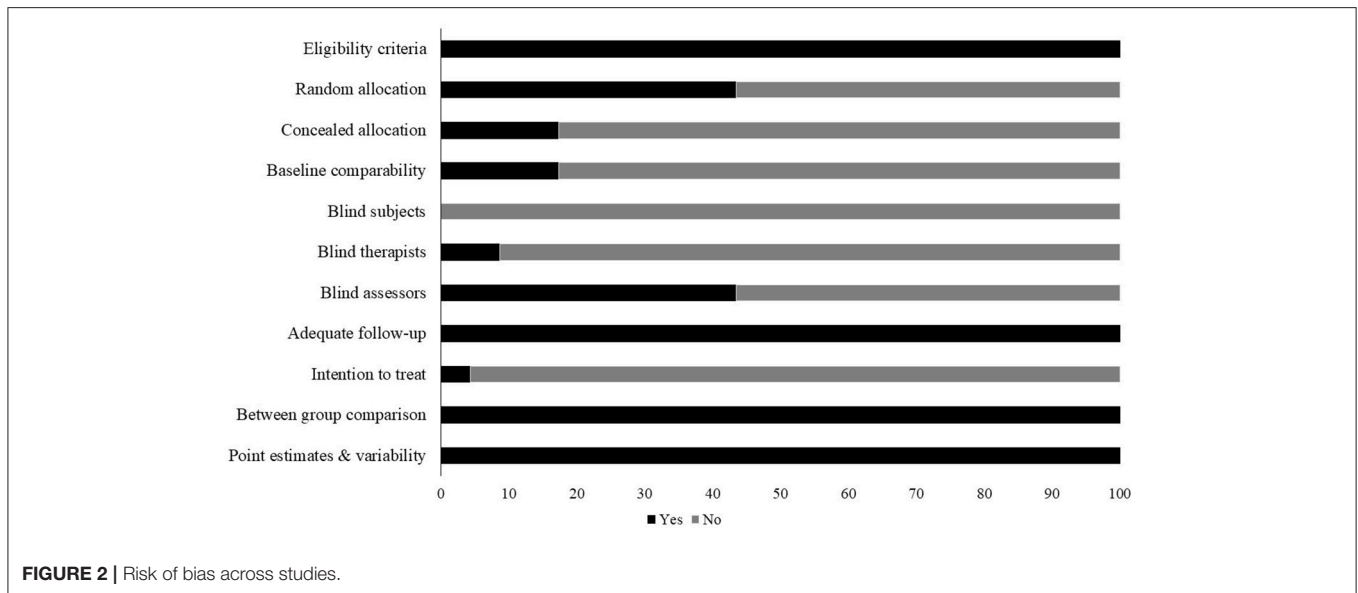
Application of a strict inclusion criterion was also meant to limit the amount of heterogeneity between the pooled studies (133). Nevertheless, despite these attempts some amount of unexplained heterogeneity was still observed. Thereafter, attempts were made to pool and analyze the studies further

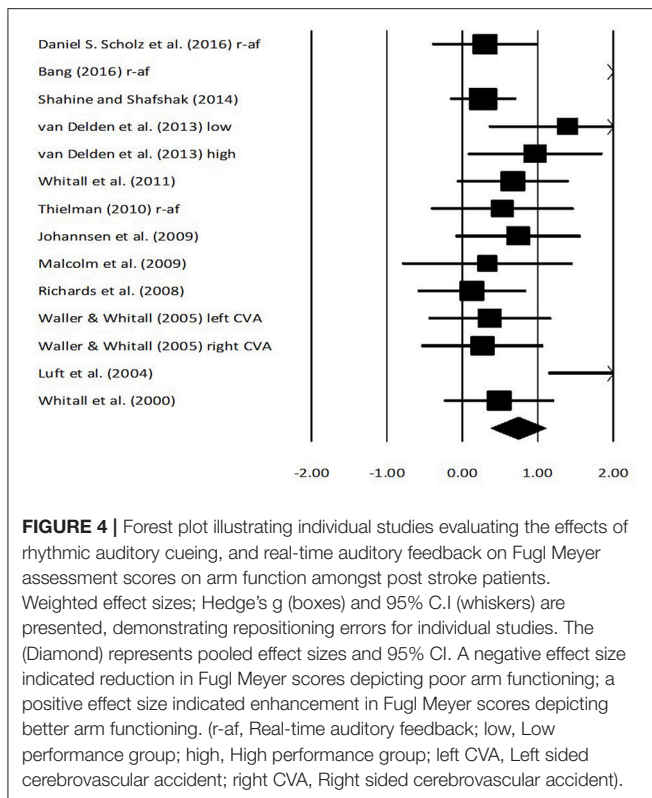
in sub-groups. The meta-analysis evaluated arm-functioning parameters, such as Fugl-Meyer assessment scores, Wolf motor time test, Action reach arm test, Stroke impact scale, 9-hole peg test, and elbow range of motion. The reliability and validity of these tests has been proven in the literature (134). Further, sub-group analyses were conducted to analyze specific training dosages, and to compare the effects of rhythmic auditory cueing and real-time auditory feedback. The main reasons for excluding the studies from statistical analysis was either major differences in between assessment methods, for instance considerably different auditory stimuli, disease duration, and/or lack of descriptive statistics within the manuscript. In this case, attempts were made by the primary reviewer (S.G) to contact respective corresponding authors.

## Fugl Meyer Assessment Score

Fugl Meyer assessment scores for arm performance were assessed in 11 studies. Here, two studies evaluated the score on stroke patients while using real-time auditory feedback, whereas nine studies utilized rhythmic auditory cueing. The analysis of studies revealed (Figure 4) a *large* effect size in the positive domain ( $g: 0.79$ , 95% C.I: 0.38–1.09) and moderate heterogeneity was observed in between the studies ( $I^2: 29.3%$ ,  $p > 0.05$ ). Further, on separating the studies for comparing the effects of rhythmic auditory cueing and real-time auditory feedback, nine studies were analyzed for their effects on rhythmic auditory cueing and three studies for real-time auditory feedback.

An analysis for effects of rhythmic auditory cueing on Fugl Meyer assessment revealed (Supplementary Figure 1), positive





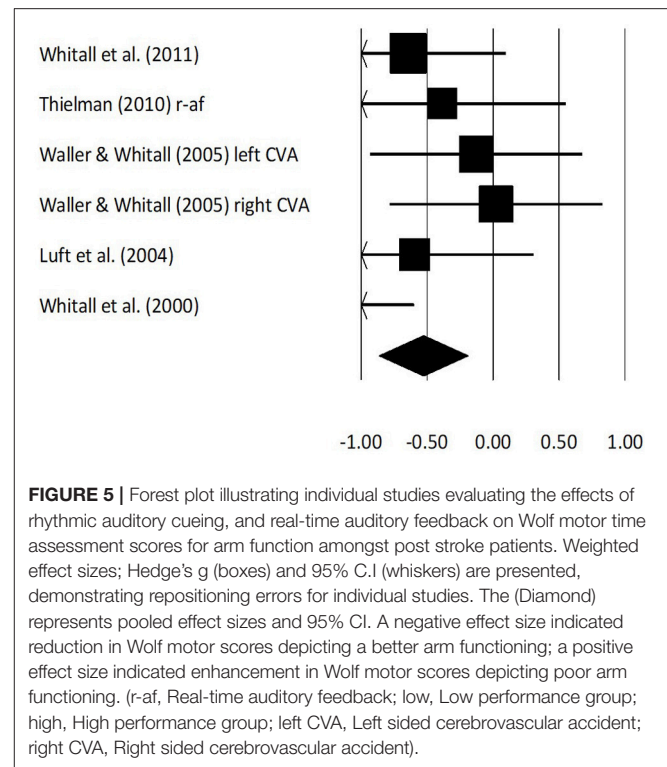
*medium* effect size with negligible heterogeneity ( $g: 0.6$ , 95% C.I: 0.30–0.91,  $I^2: 10.7\%$ ,  $p > 0.05$ ). An analysis for effects of real-time auditory feedback on Fugl Meyer assessment revealed (Supplementary Figure 2), a larger positive *large* effect size with moderate heterogeneity ( $g: 1.3$ , 95% C.I:  $-0.25$  to  $2.8$ ,  $I^2: 40.3\%$ ,  $p > 0.05$ ).

A further sub-group analysis based on the amount of training dosage (30 min to 1 h,  $\geq 3$  sessions per week) for rhythmic auditory cueing revealed (Supplementary Figure 3), positive *medium* effect size with moderate heterogeneity ( $g: 0.54$ , 95% C.I: 0.3–0.78,  $I^2: 43.8\%$ ,  $p = 0.06$ ). Only one study (126), performed a training with rhythmic auditory cueing for  $<30$  min, and hence was not included in further analysis. For the real-time auditory feedback Supplementary Figure 2 also illustrates the effects of training dosage for 30–45 min per session, and for  $>10$  sessions of training.

### Wolf Motor Time Assessment

An analysis for effects of rhythmic and real-time auditory stimuli on Wolf motor time assessment revealed (Figure 5) a negative *medium* effect size with moderate heterogeneity ( $g: -0.52$ , 95% C.I:  $-0.86$  to  $-0.19$ ,  $I^2: 33.2\%$ ,  $p = 0.18$ ). Further, an analysis for only rhythmic auditory cueing revealed (Supplementary Figure 4) a similar negative *medium* effect size with negligible heterogeneity ( $g: -0.55$ , 95% C.I:  $-1.04$  to  $-0.05$ ,  $I^2: 0\%$ ,  $p > 0.05$ ).

A further sub-group analysis based on the amount of training dosage (30 min to 1 h,  $\geq 3$  sessions per week) for rhythmic



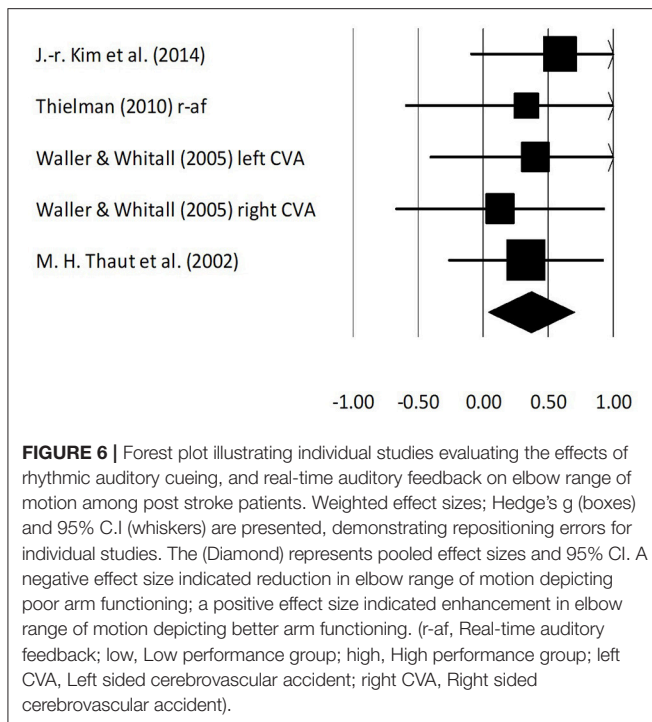
auditory cueing revealed (Supplementary Figure 5), negative *medium* effect size with negligible heterogeneity ( $g: -0.34$ , 95% C.I:  $-0.71$  to  $0.02$ ,  $I^2: 0\%$ ,  $p > 0.05$ ).

### Elbow Range of Motion

Analysis for effects of rhythmic and real-time auditory stimuli on elbow range of motion revealed assessment revealed (Figure 6) a positive *medium* effect size with negligible heterogeneity ( $g: 0.36$ , 95% C.I: 0.03–0.7,  $I^2: 0\%$ ,  $p > 0.05$ ). Further, a sub-group analysis for only rhythmic auditory cueing revealed a similar positive *medium* effect size with negligible heterogeneity ( $g: 0.37$ , 95% C.I: 0.01–0.72,  $I^2: 0\%$ ,  $p > 0.05$ ). Further sub-group analysis was not performed because two studies did not include a training regime (112, 124), and one study analyzed the effects of real-time auditory feedback (118).

### Action Reach Arm Test

Analysis for effects of rhythmic and real-time auditory inputs on Action reach arm test revealed (Supplementary Figure 6) a positive *large* effect size with substantial heterogeneity ( $g: 0.95$ , 95% C.I: 0.49–1.42,  $I^2: 87\%$ ,  $p = 0.01$ ). Further, a sub-group analysis for only real-time auditory feedback training (30–45 min per session, and for  $>10$  sessions of training) revealed a similar positive *large* effect size with substantial heterogeneity ( $g: 0.91$ , 95% C.I: 0.26–1.55,  $I^2: 95.6\%$ ,  $p = 0.001$ ). Here, heterogeneity could be affirmed to considerable differences in the characteristics of real-time auditory feedback provided to the patients (see Table 2 for details in auditory signal characteristics).



## Nine-Hole Peg Test

Analysis for effects of rhythmic and real-time auditory stimuli on Nine-hole peg test revealed (Supplementary Figure 7) a positive *small* effect size with substantial heterogeneity ( $g: 0.12$ , 95% C.I:  $-0.32$  to  $0.58$ ,  $I^2: 85.2\%$ ,  $p = 0.01$ ).

Further, a sub-group analysis for only rhythmic auditory cueing training ( $>30$  min training session, 3 sessions per week) revealed a similar positive *small* effect size with substantial heterogeneity ( $g: 0.12$ , 95% C.I:  $-0.32$  to  $0.58$ ,  $I^2: 90.15\%$ ,  $p = 0.001$ ). Here, heterogeneity could be affirmed to considerable differences in the characteristics of rhythmic auditory cueing provided to the patients (Table 2).

## Stroke Impact Scale

Analysis for effects of rhythmic and real-time auditory stimuli on Stroke impact scale revealed (Supplementary Figure 8) a positive *large* effect size with substantial heterogeneity ( $g: 0.95$ , 95% C.I:  $0.49$ – $1.42$ ,  $I^2: 87\%$ ,  $p = 0.01$ ). Further, a sub-group analysis for only rhythmic auditory cueing ( $>30$  min of training, 3 sessions per week) revealed a similar positive *large* effect size with substantial heterogeneity ( $g: 0.91$ , 95% C.I:  $0.26$ – $1.55$ ,  $I^2: 95.6\%$ ,  $p = 0.001$ ). Here, substantial amount of heterogeneity could be due to considerable differences in the characteristics of real-time auditory feedback provided to the patients (Table 2).

## DISCUSSION

The objective of this systematic review and meta-analysis was to analyze the current state of knowledge for the effects of rhythmic auditory cueing and real time kinematic auditory feedback for recovering arm function post-stroke. The current meta-analysis

reports beneficial *small-to-large* standardized effects for both rhythmic auditory cueing and real-time kinematic auditory feedback in this aspect. Normally, patients with stroke exhibit poor spatiotemporal parameters during gross and fine motor skills performance for the upper extremities (135). Research suggests that assessment of arm function from Fugl Meyer test (136), Wolf motor assessment (137), Action reach arm test (138), 9-hole peg test (139), reliably reveal the severity of gross and fine motor function impairment post-stroke (136). In the current meta-analyses, we report beneficial effects of rhythmic auditory cueing on Fugl Meyer test ( $g: 0.6$ ), Action reach arm test ( $g: 0.95$ ), Wolf motor time test ( $g: -0.55$ ), elbow range of motion (0.37), Nine-hole peg test (0.12), and Stroke impact scale ( $g: 0.91$ ). Similarly, beneficial effects of real-time auditory feedback have also been reported for Fugl Meyer test (1.3), and action reach arm test (0.91). Therefore, indicating beneficial effects of external auditory stimuli for enhancing arm recovery, quality of life post-stroke.

Several reasons ranging from physiological, psychological and cognitive domains can be asserted for the beneficial effects of auditory stimuli on motor performance (64, 67, 83, 140, 141). Firstly, from a neurophysiological aspect, the auditory stimuli could have mediated multifaceted benefits. First and foremost, the stimuli could have facilitated or bypassed the deficit internal cueing system, often impaired in stroke patients exhibiting movement disorders (12). Here, a direct stimuli could have bypassed the deficit putamen directly to thalamus, and then from pre-motor area directly to primary motor cortex (76, 142). Secondly, the external stimuli could have modulated the oscillatory pattern of neuromagnetic  $\beta$  waves (a functional measure of auditory motor coupling) in auditory cortex, cerebellum, inferior frontal gyrus, somatosensory area and sensorimotor cortex (88, 143). Thirdly, enhanced neurological activation in inferior colliculi, cerebellum, brainstem, and sensorimotor cortex post training with rhythmic auditory cueing could have enhanced motor performance. In addition, enhanced neural re-organization especially in cortico-cerebellar circuits, and phase-periodic corrections (144) could have also been important reasons for enhancements in upper limb motor performance. Similarly, external auditory stimuli have also been suggested to facilitate neural plasticity (89, 96). In the present meta-analysis, we report beneficial effects of a training duration of 30 min–1 h with rhythmic and real-time auditory stimuli to result in enhanced performance measures for upper arm. According to the results of, this seems rational. The authors in their research reported enhanced electroencephalographic co-activity in the right hemispheric regions after just 20 min of audio-motor training, thereby implying a timeline for instigating plasticity (96). The authors also suggested the necessity of such time frame for establishing links between the perceptual modalities. Additionally, bilateral training could have also played an integral role in facilitating recovery observed in most of the studies (145). This training strategy has also been reported to facilitate neuroplasticity, cortical reorganization (110). Research suggest that bilateral training can facilitate plasticity by increasing bi-hemispheric activation, disinhibiting motor cortex, and upwardly regulating the descending propriospinal neurons.

In addition to these changes, the external auditory stimuli could also mediate debilitating cognitive dysfunctions commonly observed in patients with stroke (49). Published literature has often reported a direct relationship between the cognitive decline and movement failure (46, 146, 147). Masters and Maxwell (48) suggested that a cognitive decline might predispose patients to internally monitoring their movement patterns. This could then cause interferences with the autonomic functioning of the neural pathways, and might result in information overload (46), which further could lead to movement failure. Here, two explanations have been suggested in literature to counteract this cognitive overload. Firstly, the external auditory stimuli have been suggested to act as an external distractor (148). This could have allowed the patient to direct their focus away from their movements, thereby enhancing automatic control. Choi et al. (149) for instance, analyzed static and dynamic balance in chronic stroke patients during a cognitive-motor dual task. Here, the authors reported balance improvements when auditory cues were used during the dual task. The authors suggested that auditory cues might induce appropriate attention allocation i.e., engage higher attentional resources during auditory perception, which then could have facilitated motor performance. Secondly, enhanced cross modal processing between auditory and proprioceptive signals due to their high spatiotemporal proximity could have circumvented information overload in the native sensory modality by directing task-irrelevant information toward the underused sensory modality (98, 150). Here, inferences can be drawn from the Multiple resource theory (151, 152). The theory states that separate pools of attentional resources exist for different sensory channels and processes. Therefore, utilizing congruent stimuli together through different sensory modalities might reduce attentional interference by distributing the load amongst both the utilized modalities. Research analyzing the influence of cross-modal cueing between sensory modalities for instance audio-tactile domain have reported significant enhancements in performance under dual-task conditions as compared to performances under single sensory modality (150, 153) [for a detailed meta-analysis see (154)].

Moreover, recent research also suggests that in addition to mediating cognitive overload in patients with stroke, the external auditory cueing via music might facilitate, reorganize deficit cortical structures (155–157). For instance, merging the external auditory stimuli with music can allow facilitation of neural network including prefrontal, and limbic cortex this in turn has been associated with cognitive and emotional recovery post-stroke (155). Future research is strongly recommended to address this gap in literature as it might allow in developing of a rehabilitation protocol that focuses not only on motor recovery but also neural re-generation and/or organization (158).

In addition to the cognitive and motor deficits, the external auditory stimuli can also mediate lower sensory perceptual thresholds exhibited in patients in stroke (35). Here, external auditory stimuli might enhance the saliency of the perceptual modalities, which could then support the development of feedback, and feedforward models necessary for motor planning and execution (82, 159–161). Also, cross-sensory impacts

between the perceptual modalities due to high spatiotemporal proximity between the sensory modalities might result in the auditory stimuli to support the deficit proprioceptive modality (98). Recent research evaluating the rhythmic auditory cueing suggests that mediating the auditory signal characteristics in terms of ecologically valid action relevant sounds might further enrich the precepted spatio-temporal information and allow extended enhancements in motor execution (142, 162) i.e., as compared to isosynchronous cueing. Patients with stroke due to their sensory impairments usually have higher thresholds for perception of sensory stimuli (35, 163). Therefore, enhancing the saliency of sensory information delivered through ecologically valid action relevant auditory stimuli such as walking on gravel, snow might be beneficial (50, 142, 164). According to Young et al. (165) action relevant auditory stimuli not only specify the temporal but also the spatial information, thereby enriching the feed-forward mechanisms to execute a motor task efficiently (166). The authors also affirmed beneficial effects of action relevant auditory stimuli on gait performance due to putative function of “sensori-motor neurons” (166). Furthermore, it can be expected that modifications in auditory signal characteristics such as modulation of timbre at a higher intensity further merged with a broad ascending melody and rich harmony might motivate a stroke patient to exert more force (50, 142, 167). This however, was not evaluated in any of the studies included in this review and should be a possible topic of research for future studies.

Moreover, research suggests the extended benefits of real-time auditory feedback with respect to rhythmic auditory stimuli. suggested that mapping the movements with real-time auditory feedback could allow a patient to better perceive their self-generated movement amplitudes. Further allowing them to compare it with the sound of a desirable auditory movement model. This could then result in development of an auditory reference framework model, which could amplify internal simulations of movements, and allow a patient to better perceive spatio-temporal parameters as compared to discrete rhythmic component (168). A contextual comparison of neuroimaging data from rhythmic (85, 86), and real-time auditory stimuli (90), suggests a large number of neurological structures having overlapped activation between both the auditory stimuli. However, enhanced activation of the areas associated with action observation such as, superior temporal sulcus, premotor cortex (169, 170), have been reported with real-time auditory feedback in one study (90). Here, the main reasons for the enhanced activation in areas associated with motion perception can be attributed to the findings of Shams and Seitz (171) and Lahav et al. (172). Here, the authors suggested that a convergent audio-visual motion would enhance accuracy of perception and motor performance due to the enhanced multimodal congruent nature (90, 171). Further, Lahav et al. (172) hypothesized that an audio-visual mirror neuron system with the premotor areas might be involved in serving as an “action listening” and “hearing & doing mirror neuron system,” with the latter being largely dependent on a person’s motor repertoire. Likewise, Vinken et al. (173) demonstrated that mapping real-time auditory feedback with real life activities lead to enhanced accuracy in judgement of actions, thereby demonstrating enhanced potential for improving

motor perception, control, and learning. In the present meta-analysis enhanced scores for Fugl Meyer scores with real time kinematic auditory feedback (g: 1.3) were observed as compared to rhythmic auditory cueing (0.60).

The auditory stimuli could have also influenced the musculoskeletal structure of the upper extremities. For example, research suggests that intricate neuroanatomical interconnections between the auditory and motor cortex could allow the auditory stimuli could possibly mediate the firing and recruitment rate of motor units (28). This could then result in smoothening of motor movements, further resulting in enhanced joint kinematics, and movement scaling parameters (174). Likewise, regularized muscle co-activation rate has also been documented in electromyographic studies (175–177). This was also demonstrated in our meta-analysis concerning enhancement in elbow range of motion with rhythmic auditory cueing.

Moreover, the application of these interventions can be promoted in a cost-effective manner due to their high viability (50, 142). The strategies could prove to be efficient in developing countries where higher costs of rehabilitation promote stroke associated morbidity and mortality (178, 179). Here, the medical practitioners or tele-stroke (179), helplines can promote the use of mobile applications which can be utilized by patients at their home. Few smartphone applications have been reported in published literature, however, their feasibility in terms of costs is too high (180, 181). Future studies are recommended to address this gap and develop open source applications for the use of stroke patients. Here, the global position sensors, gyroscope and accelerometers present usually in a smartphone can be utilized to direct kinematic information, which could then assist in projecting either optimal rhythmic cueing pattern or converted/mapped in real-time to produce sonified auditory feedback. Further, applications can be developed to generate different types of ecologically valid sounds.

Finally, as the current review mentions a sole author (S.G), concerns regarding biasing, methodological flaws in the study's design and outcomes could be expected (182). Here, the

reader is assured that this present systematic review and meta-analysis was carried out by two authors. Dr. Ishan Ghai (I.G) acted as an additional reviewer and statistician in the current study. His role is duly mentioned in the methodological, and acknowledgment sections. Dr. Ishan Ghai has himself consented to be excluded from this study as a co-author. Moreover, to ensure transparency in the methodological parts of the current review and analyses sufficient description has been provided for reciprocating the search strategy (**Table 1**), and the statistical analysis. Additionally, the corresponding author is willing to share the entire data with any reader upon request.

In conclusion, this present review for the first time analyzed the effects of rhythmic and real time auditory stimuli on arm recovery in post-stroke patients. The present findings are in agreement with systematic reviews and meta-analysis carried out to analyze auditory entrainment effect on aging (50), cerebral palsy (164), stroke (183), multiple sclerosis (184), and parkinsonism (63, 185). This review strongly suggests the incorporation of rhythmic and real-time auditory stimuli with a training dosage of 30 min to 1 h of training, for >3 sessions week for enhancing arm function recovery post-stroke.

## AUTHOR CONTRIBUTIONS

SG conceptualized the study, carried out the systematic review, statistical analysis, and wrote the paper.

## ACKNOWLEDGMENTS

The publication of this article was funded by the Open Access fund of Leibniz Universität Hannover. The author would also like to thank Dr. Ishan Ghai for assisting in systematic review process of this manuscript.

## SUPPLEMENTARY MATERIAL

The Supplementary Material for this article can be found online at: <https://www.frontiersin.org/articles/10.3389/fneur.2018.00488/full#supplementary-material>

## REFERENCES

- World Health Organization. *Global Health Estimates: Deaths by Cause, Age, Sex and Country, 2000–2012*. Geneva: WHO (2014).
- Strong K, Mathers C, Bonita R. Preventing stroke: saving lives around the world. *Lancet Neurol.* (2007) 6:182–7. doi: 10.1016/S1474-4422(07)70031-5
- Feigin VL, Lawes CMM, Bennett DA, Barker-Collo SL, Parag V. Worldwide stroke incidence and early case fatality reported in 56 population-based studies: a systematic review. *Lancet Neurol.* (2009) 8:355–69. doi: 10.1016/S1474-4422(09)70025-0
- Cerniauskaite M, Quintas R, Koutsogeorgou E, Meucci P, Sattin D, Leonardi M, Raggi A. Quality-of-life and disability in patients with stroke. *Am J Phys Med Rehabil* (2012) 91:S39–47. doi: 10.1097/PHM.0b013e31823d4df7
- Pollock A, Farmer SE, Brady MC, Langhorne P, Mead GE, Mehrholz J, et al. Interventions for improving upper limb function after stroke. *Cochrane Database Syst Rev.* (2013) CD010820. doi: 10.1002/14651858.CD010820
- White JH, Attia J, Sturm J, Carter G, Magin P. Predictors of depression and anxiety in community dwelling stroke survivors: a cohort study. *Disabil Rehabil.* (2014) 36:1975–82. doi: 10.3109/09638288.2014.884172
- Haun J, Rittman M, Sberna M. The continuum of connectedness and social isolation during post stroke recovery. *J Aging Stud* (2008) 22:54–64. doi: 10.1016/j.jaging.2007.03.001
- King RB. Quality of life after stroke. *Stroke* (1996) 27:1467–72. doi: 10.1161/01.STR.27.9.1467
- Franceschini M, La Porta F, Agosti M, Massucci M. Is health-related-quality of life of stroke patients influenced by neurological impairments at one year after stroke? *Eur J Phys Rehabil Med.* (2010) 46:389–99.
- Godwin KM, Wasserman J, Ostwald SK. Cost associated with stroke: outpatient rehabilitative services and medication. *Top Stroke Rehabil.* (2011) 18(Suppl. 1):676–84. doi: 10.1310/tsr18s01-676
- Krakauer JW. Arm function after stroke: from physiology to recovery. *Semin Neurol.* (2005) 25:384–95. doi: 10.1055/s-2005-923533
- Handley A, Medcalf P, Hellier K, Dutta D. Movement disorders after stroke. *Age Ageing* (2009) 38:260–6. doi: 10.1093/ageing/afp020



13. Barker RN, Brauer S, Carson R. Training-induced changes in the pattern of triceps to biceps activation during reaching tasks after chronic and severe stroke. *Exp Brain Res*. (2009) 196:483–96. doi: 10.1007/s00221-009-1872-8
14. Watkins C, Leathley M, Gregson J, Moore A, Smith T, Sharma A. Prevalence of spasticity post stroke. *Clin Rehabil* (2002) 16:515–22. doi: 10.1191/0269215502cr5120a
15. Kokotilo KJ, Eng JJ, Boyd LA. Reorganization of brain function during force production after stroke: a systematic review of the literature. *J Neurol Phys Ther*. (2009) 33:45–54. doi: 10.1097/NPT.0b013e31819824f0
16. Santisteban L, Térémets M, Bleton JP, Baron JC, Maier MA, Lindberg PG. Upper limb outcome measures used in stroke rehabilitation studies: a systematic literature review. *PLoS ONE* (2016) 11:e0154792. doi: 10.1371/journal.pone.0154792
17. Clark DJ, Ting LH, Zajac FE, Neptune RR, Kautz SA. Merging of healthy motor modules predicts reduced locomotor performance and muscle coordination complexity post-stroke. *J Neurophysiol*. (2010) 103:844–57. doi: 10.1152/jn.00825.2009
18. Rathore SS, Hinn AR, Cooper LS, Tyroler HA, Rosamond WD. Characterization of incident stroke signs and symptoms. Findings from the atherosclerosis risk in communities study. *Stroke* (2002) 33:2718–21. doi: 10.1161/01.STR.0000035286.87503.31
19. Foerch C, Misselwitz B, Sitzer M, Berger K, Steinmetz H, Neumann-Haefelin T. Difference in recognition of right and left hemispheric stroke. *Lancet* (2005) 366:392–3. doi: 10.1016/S0140-6736(05)67024-9
20. Kwakkel G, Kollen BJ, van der Grond J, Prevo AJ. Probability of regaining dexterity in the flaccid upper limb. *Stroke* (2003) 34:2181–6. doi: 10.1161/01.STR.0000087172.16305.CD
21. Dobkin BH. Rehabilitation after stroke. *N Engl J Med* (2005) 352:1677–84. doi: 10.1056/NEJMc043511
22. Perez-Marmol JM, Garcia-Rios MC, Barrero-Hernandez FJ, Molina-Torres G, Brown T, et al. Functional rehabilitation of upper limb apraxia in poststroke patients: study protocol for a randomized controlled trial. *Trials* (2015) 16:508. doi: 10.1186/s13063-015-1034-1
23. Silva A, Sousa AS, Tavares JM, Tinoco A, Santos R, Sousa F. Ankle dynamic in stroke patients: agonist vs. antagonist muscle relations. *Somatosens Mot Res*. (2012) 29:111–6. doi: 10.3109/08990220.2012.715099
24. Lee CJ, Sanders RH, Payton CJ. Changes in force production and stroke parameters of trained able-bodied and unilateral arm-amputee female swimmers during a 30 s tethered front-crawl swim. *J Sports Sci*. (2014) 32:1704–11. doi: 10.1080/02640414.2014.915420
25. Trumbower RD, Ravichandran VJ, Krutky MA, Perreault EJ. Contributions of altered stretch reflex coordination to arm impairments following stroke. *J Neurophysiol*. (2010) 104:3612–24. doi: 10.1152/jn.00804.2009
26. Messier S, Bourbonnais D, Desrosiers J, Roy Y. Kinematic analysis of upper limbs and trunk movement during bilateral movement after stroke. *Arch Phys Med Rehabil*. (2006) 87:1463–70. doi: 10.1016/j.apmr.2006.07.273
27. van Dokkum L, Hauret I, Mottet D, Froger J, Metrot J, Laffont I. The contribution of kinematics in the assessment of upper limb motor recovery early after stroke. *Neurorehabil Neural Repair* (2014) 28:4–12. doi: 10.1177/1545968313498514
28. Hara Y, Masakado Y, Chino N. The physiological functional loss of single thenar motor units in the stroke patients: when does it occur? Does it progress? *Clin Neurophysiol*. (2004) 115:97–103. doi: 10.1016/j.clinph.2003.08.002
29. Young CA, Mills RJ, Gibbons C, Thornton EW. Poststroke fatigue: the patient perspective. *Top Stroke Rehabil*. (2013) 20:478–84. doi: 10.1310/tsr2006-478
30. Pelton T, van Vliet P, Hollands K. Interventions for improving coordination of reach to grasp following stroke: a systematic review. *Int J Evid Based Healthcare* (2012) 10:89–102. doi: 10.1111/j.1744-1609.2012.00261.x
31. Lannin NA, Cusick A, McCluskey A, Herbert RD. Effects of splinting on wrist contracture after stroke. A randomized controlled trial. *Stroke* (2007) 38:111–6. doi: 10.1161/01.STR.0000251722.77088.12
32. Pop T. Subluxation of the shoulder joint in stroke patients and the influence of selected factors on the incidence of instability. *Ortoped Traumatol Rehabil* (2013) 15:259–67. doi: 10.5604/15093492.1058421
33. Jellinger KA. Pathology and pathogenesis of vascular cognitive impairment—a critical update. *Front Aging Neurosci*. (2013) 5:17. doi: 10.3389/fnagi.2013.00017
34. Weinstein G, Preis SR, Beiser AS, Au R, Kelly-Hayes M, Kase CS, et al. Cognitive performance after stroke—the Framingham Heart Study. *Int J Stroke* (2014) 9(Suppl. A100): 48–54. doi: 10.1111/ijis.12275
35. Bolognini N, Russo C, Edwards DJ. The sensory side of post-stroke motor rehabilitation. *Restor Neurol Neurosci* (2016) 34:571–86. doi: 10.3233/RNN-150606
36. Grau-Olivares M, Bartres-Faz D, Arboix A, Soliva JC, Rovira M, Targa C. Mild cognitive impairment after lacunar infarction: voxel-based morphometry and neuropsychological assessment. *Cerebrovasc Dis*. (2007) 23:353–61. doi: 10.1159/000099134
37. Stebbins GT, Nyenhuis DL, Wang C, Cox JL, Freels S, Bangen K, et al. Gray matter atrophy in patients with ischemic stroke with cognitive impairment. *Stroke* (2008) 39:785–93. doi: 10.1161/STROKEAHA.107.507392
38. Fazekas F, Wardlaw JM. The origin of white matter lesions. A further piece to the puzzle. *Stroke* (2013) 44:951–2. doi: 10.1161/STROKEAHA.111.000849
39. Sun JH, Tan L, Yu JT. Post-stroke cognitive impairment: epidemiology, mechanisms and management. *Ann Transl Med*. (2014) 2:80. doi: 10.3978/j.issn.2305-5839.2014.08.05
40. Makin SDJ, Turpin S, Dennis MS, Wardlaw JM. Cognitive impairment after lacunar stroke: systematic review and meta-analysis of incidence, prevalence and comparison with other stroke subtypes. *J Neurol Neurosurg Psychiatry* (2013) 84:893–900. doi: 10.1136/jnnp-2012-303645
41. Sperber C, Karnath HO. Topography of acute stroke in a sample of 439 right brain damaged patients. *Neuroimage Clin*. (2016) 10:124–8. doi: 10.1016/j.nicl.2015.11.012
42. Maraka S, Jiang Q, Jafari-Khouzani K, Li L, Malik S, Hamidian H, et al. Degree of corticospinal tract damage correlates with motor function after stroke. *Ann Clin Transl Neurol*. (2014) 1:891–9. doi: 10.1002/acn3.132
43. Puig J, Blasco G, Schlaug G, Steiner CM, Daunis EP, Biarnes C, et al. Diffusion tensor imaging as a prognostic biomarker for motor recovery and rehabilitation after stroke. *Neuroradiology* (2017) 59:343–51. doi: 10.1007/s00234-017-1816-0
44. Tennant KA, Taylor SL, White ER, Brown CE. Optogenetic rewiring of thalamocortical circuits to restore function in the stroke injured brain. *Nat Commun*. (2017) 8:15879. doi: 10.1038/ncomms15879
45. Kamali A, Flanders AE, Brody J, Hunter JV, Hasan KM. Tracing superior longitudinal fasciculus connectivity in the human brain using high resolution diffusion tensor tractography. *Brain Struct Funct* (2014) 219:269–81. doi: 10.1007/s00429-012-0498-y
46. Ghai S, Driller MW, Masters RSW. The influence of below-knee compression garments on knee-joint proprioception. *Gait Posture* (2018) 60:258–61. doi: 10.1016/j.gaitpost.2016.08.008
47. Masters RSW. Knowledge, knerves and know-how: the role of explicit versus implicit knowledge in the breakdown of a complex motor skill under pressure. *Br J Psychol*. (1992) 83:343–58. doi: 10.1111/j.2044-8295.1992.tb02446.x
48. Masters RSW, Maxwell J. The theory of reinvestment. *Int Rev Sport Exerc Psychol*. (2008) 1:160–83. doi: 10.1080/17509840802287218
49. Ghai S, Ghai I, Effenberg AO. Effects of dual tasks and dual-task training on postural stability: a systematic review and meta-analysis. *Clin Interv Aging* (2017) 12:557–77. doi: 10.2147/CIA.S125201
50. Ghai S, Ghai I, Effenberg AO. Effect of rhythmic auditory cueing on aging gait: a systematic review and meta-analysis. *Aging Dis*. (2017) 131–200. doi: 10.14336/AD.2017.1031
51. Laver KE, Lange B, George S, Deutsch JE, Saposnik G, Crotty M. Virtual reality for stroke rehabilitation. *Cochrane Database Syst Rev*. (2017) CD008349. doi: 10.1002/14651858.CD008349.pub4
52. Tong Y, Pandy JT Jr., Li WA, Du H, Zhang T, Geng X, et al. Motor imagery-based rehabilitation: potential neural correlates and clinical application for functional recovery of motor deficits after stroke. *Aging Disord*. (2017) 8:364–71. doi: 10.14336/AD.2016.1012
53. Del Din S, Bertoldo A, Sawacha Z, Jonsdottir J, Rabuffetti M, Cobelli C, et al. Assessment of biofeedback rehabilitation in post-stroke patients combining fMRI and gait analysis: a case study. *J Neuroeng Rehabil* (2014) 11:53. doi: 10.1186/1743-0003-11-53
54. Pollock A, Baer GD, Langhorne P, Pomeroy VM. Physiotherapy treatment approaches for stroke. *Stroke* (2008) 39:519–20. doi: 10.1161/STROKEAHA.107.492710

55. Billinger SA, Arena R, Bernhardt J, Eng JJ, Franklin BA, Johnson CM, et al. Physical activity and exercise recommendations for stroke survivors. A statement for healthcare professionals From the American Heart Association/American Stroke Association. *Stroke* (2014) 45:2532–53. doi: 10.1161/STR.0000000000000022
56. Figueiredo EM, Ferreira GB, Maia Moreira RC, Kirkwood RN, Fettes L. Efficacy of ankle-foot orthoses on gait of children with cerebral palsy: systematic review of literature. *Pediatr Phys Ther.* (2008) 20:207–23. doi: 10.1097/PEP.0b013e318181fb34
57. Ghai S, Driller M, Ghai I. Effects of joint stabilizers on proprioception and stability: a systematic review and meta-analysis. *Phys Ther Sport* (2017) 25:65–75. doi: 10.1016/j.ptsp.2016.05.006
58. Ghai S. *Proprioception and Performance: The Role of Below-Knee Compression Garments and Secondary Tasks*. Hamilton: University of Waikato (2016). Available online at: <https://hdl.handle.net/10289/10575>
59. Hatem SM, Saussez G, della Faille M, Prist V, Zhang X, Dispa D, et al. Rehabilitation of motor function after stroke: a multiple systematic review focused on techniques to stimulate upper extremity recovery. *Front Hum Neurosci.* (2016) 10:442. doi: 10.3389/fnhum.2016.00442
60. Scholz DS, Rohde S, Nikmaram N, Brückner HP, Großbach M, Rollnik JD et al. Sonification of arm movements in stroke rehabilitation – a novel approach in neurologic music therapy. *Front Neurol.* (2016) 7:106. doi: 10.3389/fneur.2016.00106
61. Lam P, Hebert D, Boger J, Lacheray H, Gardner D, Apkarian J, et al. A haptic-robotic platform for upper-limb reaching stroke therapy: preliminary design and evaluation results. *J Neuroeng Rehabil.* (2008) 5:15. doi: 10.1186/1743-0003-5-15
62. Urra O, Casals A, Jane R. The impact of visual feedback on the motor control of the upper-limb. *Conf Proc IEEE Eng Med Biol Soc.* (2015) 2015:3945–8. doi: 10.1109/EMBC.2015.7319257
63. Spaulding SJ, Barber B, Colby M, Cormack B, Mick T, Jenkins ME. Cueing and gait improvement among people with Parkinson's disease: a meta-analysis. *Arch Phys Med Rehabil.* (2013) 94:562–70. doi: 10.1016/j.apmr.2012.10.026
64. Thaut MH, Abiru M. Rhythmic auditory stimulation in rehabilitation of movement disorders: a review of current research. *Music Percept.* (2010) 27:263–9. doi: 10.1525/mp.2010.27.4.263
65. Ermolaeva VY, Borgest A. Intercortical connections of the auditory areas with the motor area. *Neurosci Behav Physiol* (1980) 10:210–5. doi: 10.1007/BF01182212
66. Felix RA, Fridberger A, Leijon S, Berrebi AS, Magnusson AK. Sound rhythms are encoded by postinhibitory rebound spiking in the superior paraolivary nucleus. *J Neurosci.* (2011) 31:12566–78. doi: 10.1523/JNEUROSCI.2450-11.2011
67. Thaut MH, McIntosh GC, Hoemberg V. Neurobiological foundations of neurologic music therapy: rhythmic entrainment and the motor system. *Front Psychol.* (2014) 5:1185. doi: 10.3389/fpsyg.2014.01185
68. Nodal FR, López DE. Direct input from cochlear root neurons to pontine reticulospinal neurons in albino rat. *J Compar Neurol.* (2003) 460:80–93. doi: 10.1002/cne.10656
69. Mirjany M, Preuss T, Faber DS. Role of the lateral line mechanosensory system in directionality of goldfish auditory evoked escape response. *J Exp Biol.* (2011) 214:3358–67. doi: 10.1242/jeb.052894
70. de la Mothe LA, Blumell S, Kajikawa Y, Hackett TA. Cortical connections of the auditory cortex in marmoset monkeys: core and medial belt regions. *J Compar Neurol.* (2006) 496:27–71. doi: 10.1002/cne.20923
71. Read HL, Winer JA, Schreiner CE. Functional architecture of auditory cortex. *Curr Opin Neurobiol.* (2002) 12:433–40. doi: 10.1016/S0959-4388(02)00342-2
72. Chen JL, Zatorre RJ, Penhune VB. Interactions between auditory and dorsal premotor cortex during synchronization to musical rhythms. *Neuroimage* (2006) 32:1771–81. doi: 10.1016/j.neuroimage.2006.04.207
73. Grahn JA, Rowe JB. Feeling the beat: premotor and striatal interactions in musicians and nonmusicians during beat perception. *J Neurosci.* (2009) 29:7540–8. doi: 10.1523/JNEUROSCI.2018-08.2009
74. Tecchio F, Salustri C, Thaut MH, Pasqualetti P, Rossini PM. Conscious and preconscious adaptation to rhythmic auditory stimuli: a magnetoencephalographic study of human brain responses. *Exp Brain Res.* (2000) 135:222–30. doi: 10.1007/s002210000507
75. Giovannelli F, Innocenti I, Rossi S, Borgheresi A, Ragazzoni A, Zaccara G, et al. Role of the dorsal premotor cortex in rhythmic auditory-motor entrainment: a perturbational approach by rTMS. *Cereb Cortex* (2012) 24:1009–16. doi: 10.1093/cercor/bhs386
76. Nombela C, Hughes LE, Owen AM, Grahn JA. Into the groove: can rhythm influence Parkinson's disease? *Neurosci Biobehav Rev.* (2013) 37:2564–70. doi: 10.1016/j.neubiorev.2013.08.003
77. Spidalieri G, Busby L, Lamarre Y. Fast ballistic arm movements triggered by visual, auditory, and somesthetic stimuli in the monkey. II. Effects of unilateral dentate lesion on discharge of precentral cortical neurons and reaction time. *J Neurophysiol.* (1983) 50:1359–79. doi: 10.1152/jn.1983.50.6.1359
78. Thaut M, Kenyon G, Schauer M, McIntosh G. The connection between rhythmicity and brain function. *IEEE Eng Med Biol Magaz.* (1999) 18:101–8. doi: 10.1109/51.752991
79. Repp BH, Su YH. Sensorimotor synchronization: a review of recent research (2006–2012). *Psychon Bull Rev.* (2013) 20:403–52. doi: 10.3758/s13423-012-0371-2
80. Grahn JA. See what I hear? Beat perception in auditory and visual rhythms. *Exp Brain Res.* (2012) 220:51–61. doi: 10.1007/s00221-012-3114-8
81. van Noorden L, Moelants D. Resonance in the perception of musical pulse. *J New Music Res.* (1999) 28:43–66. doi: 10.1076/jnmr.28.1.43.3122
82. Effenberg AO, Fehse U, Schmitz G, Krueger B, Mechling H. Movement sonification: effects on motor learning beyond rhythmic adjustments. *Front Neurosci.* (2016) 10:219. doi: 10.3389/fnins.2016.00219
83. Schaefer RS. Auditory rhythmic cueing in movement rehabilitation: findings and possible mechanisms. *Philos Trans R Soc B Biol Sci.* (2014) 369:20130402. doi: 10.1098/rstb.2013.0402
84. Thaut MH, Hoemberg V. *Handbook of Neurologic Music Therapy*. Oxford: Oxford University Press (2014).
85. Grahn JA, Henry MJ, McAuley JD. fMRI investigation of cross-modal interactions in beat perception: audition primes vision, but not vice versa. *Neuroimage* (2011) 54:1231–43. doi: 10.1016/j.neuroimage.2010.09.033
86. Grahn JA. Neural mechanisms of rhythm perception: current findings and future perspectives. *Top Cogn Sci.* (2012) 4:585–606. doi: 10.1111/j.1756-8765.2012.01213.x
87. Hove MJ, Fairhurst MT, Kotz SA, Keller PE. Synchronizing with auditory and visual rhythms: an fMRI assessment of modality differences and modality appropriateness. *Neuroimage* (2013) 67:313–21. doi: 10.1016/j.neuroimage.2012.11.032
88. Fujioka T, Trainor LJ, Large EW, Ross B. Internalized timing of isochronous sounds is represented in neuromagnetic beta oscillations. *J Neurosci.* (2012) 32:1791–802. doi: 10.1523/JNEUROSCI.4107-11.2012
89. Ross B, Barat M, Fujioka T. Sound-making actions lead to immediate plastic changes of neuromagnetic evoked responses and induced beta-band oscillations during perception. *J Neurosci.* (2017) 37:5948–59. doi: 10.1523/JNEUROSCI.3613-16.2017
90. Schmitz G, Mohammadi B, Hammer A, Heldmann M, Samii A, Münte TF, et al. Observation of sonified movements engages a basal ganglia frontocortical network. *BMC Neurosci.* (2013) 14:32. doi: 10.1186/1471-2202-14-32
91. Heremans E, Nieuwboer A, Spildooren J, De Bondt S, D'hooge AM, Helsen WI et al. Cued motor imagery in patients with multiple sclerosis. *Neuroscience* (2012) 206:115–21. doi: 10.1016/j.neuroscience.2011.12.060
92. Heremans E, Nieuwboer A, Feys P, Vercruyse S, Vandenberghe W, Sharma N, et al. External cueing improves motor imagery quality in patients with Parkinson disease. *Neurorehabil Neural Repair* (2012) 26:27–35. doi: 10.1177/1545968311411055
93. Lima CF, Lavan N, Evans S, Agnew Z, Halpern AR, Shanmugalingam P, et al. Feel the noise: relating individual differences in auditory imagery to the structure and function of sensorimotor systems. *Cereb Cortex* (2015) 25:4638–50. doi: 10.1093/cercor/bhv134
94. Miller RA, Thaut MH, McIntosh GC, Rice RR. Components of EMG symmetry and variability in parkinsonian and healthy

- elderly gait. *Electroencephalogr Clin Neurophysiol.* (1996) 101:1–7. doi: 10.1016/0013-4694(95)00209-X
95. Luft AR, McCombe-Waller S, Whittall J, Forrester LW, Macko R, Sorkin JD, et al. Repetitive bilateral arm training and motor cortex activation in chronic stroke: a randomized controlled trial. *J Am Med Assoc.* (2004) 292:1853–61. doi: 10.1001/jama.292.15.1853
  96. Bangert M, Altenmüller EO. Mapping perception to action in piano practice: a longitudinal DC-EEG study. *BMC Neurosci.* (2003) 4:26. doi: 10.1186/1471-2202-4-26
  97. Rochester L, Baker K, Nieuwboer A, Burn D. Targeting dopa-sensitive and dopa-resistant gait dysfunction in Parkinson's disease: selective responses to internal and external cues. *Mov Disord.* (2011) 26:430–5. doi: 10.1002/mds.23450
  98. Ghai S, Schmitz G, Hwang TH, Effenberg AO. Auditory proprioceptive integration: effects of real-time kinematic auditory feedback on knee proprioception. *Front Neurosci.* (2018) 12:142. doi: 10.3389/fnins.2018.00142
  99. Dyer J, Stapleton P, Rodger M. Transposing musical skill: sonification of movement as concurrent augmented feedback enhances learning in a bimanual task. *Psychol Res.* (2017) 81:850–62. doi: 10.1007/s00426-016-0775-0
  100. Wolf A, Scheiderer R, Napolitan N, Belden C, Shaub L, Whitford M. Efficacy and task structure of bimanual training post stroke: a systematic review. *Top Stroke Rehabil.* (2014) 21:181–96. doi: 10.1310/tsr2103-181
  101. Latimer CP, Keeling J, Lin B, Henderson M, Hale LA. The impact of bilateral therapy on upper limb function after chronic stroke: a systematic review. *Disabil Rehabil.* (2010) 32:1221–31. doi: 10.3109/09638280903483877
  102. Zhang Y, Cai J, Zhang Y, Ren T, Zhao M, Zhao Q. Improvement in stroke-induced motor dysfunction by music-supported therapy: a systematic review and meta-analysis. *Sci Rep.* (2016) 6:38521. doi: 10.1038/srep38521
  103. Yoo GE, Kim SJ. Rhythmic auditory cueing in motor rehabilitation for stroke patients: systematic review and meta-analysis. *J Music Ther.* (2016) 53:149–77. doi: 10.1093/jmt/thw003
  104. Liberati A, Altman DG, Tetzlaff J, Mulrow C, Gøtzsche PC, Ioannidis JP, et al. The PRISMA statement for reporting systematic reviews and meta-analyses of studies that evaluate health care interventions: explanation and elaboration. *Ann Intern Med.* (2009) 151:W65–94. doi: 10.7326/0003-4819-151-4-200908180-00136
  105. Methley AM, Campbell S, Chew-Graham C, McNally R, Cheraghi-Sohi S. PICO, PICOS and SPIDER: a comparison study of specificity and sensitivity in three search tools for qualitative systematic reviews. *BMC Health Serv Res.* (2014) 14:579. doi: 10.1186/s12913-014-0579-0
  106. Bang DH. Effect of modified constraint-induced movement therapy combined with auditory feedback for trunk control on upper extremity in subacute stroke patients with moderate impairment: randomized controlled pilot trial. *J Stroke Cerebrovasc Dis.* (2016) 25:1606–12. doi: 10.1016/j.jstrokecerebrovasdis.2016.03.030
  107. Scholz DS, Rhode S, Großbach M, Rollnik J, Altenmüller E. Moving with music for stroke rehabilitation: a sonification feasibility study. *Ann NY Acad Sci.* (2015) 1337:69–76. doi: 10.1111/nyas.12691
  108. Malcolm MP, Massie C, Thaut M. Rhythmic auditory-motor entrainment improves hemiparetic arm kinematics during reaching movements: a pilot study. *Top Stroke Rehabil.* (2009) 16:69–79. doi: 10.1310/tsr1601-69
  109. Speth F. The role of sound in robot-assisted hand function training post-stroke. Humboldt-Universität zu Berlin, Kultur-, Sozial- und Bildungswissenschaftliche Fakultät (2016).
  110. van Delden AL, Peper CL, Nienhuys KN, Zijp NI, Beek PJ, and Kwakkel G. Unilateral versus bilateral upper limb training after stroke. *Stroke* (2013) 44:2613–6. doi: 10.1161/STROKEAHA.113.001969
  111. Schmitz G, Kroeger D, Effenberg AO. *A Mobile Sonification System for Stroke Rehabilitation.* Georgia Institute of Technology (2014).
  112. Kim J, Jung MY, Yoo, EY, Park JH, Kim SH, Lee J. Effects of rhythmic auditory stimulation during hemiplegic arm reaching in individuals with stroke: an exploratory study. *Hong Kong J Occup Ther.* (2014) 24:64–71. doi: 10.1016/j.hkjot.2014.11.002
  113. Shahine EM, Shafshak TS. The effect of repetitive bilateral arm training with rhythmic auditory cueing on motor performance and central motor changes in patients with chronic stroke. *Egypt Rheumatol Rehabil* (2014) 41:8. doi: 10.4103/1110-161X.128128
  114. Dispa D, Lejeune T, Thonnard JL. The effect of repetitive rhythmic precision grip task-oriented rehabilitation in chronic stroke patients: a pilot study. *Int J Rehabil Res.* (2013) 36:81–7. doi: 10.1097/MRR.0b013e32835acfd5
  115. Whittall J, Waller SM, Sorkin JD, Forrester LW, Macko RF, Hanley DF, et al. Bilateral and unilateral arm training improve motor function through differing neuroplastic mechanisms a single-blinded randomized controlled trial. *Neurorehabil Neural Repair* (2011) 25:118–29. doi: 10.1177/1545968310380685
  116. Chouhan S, Kumar S. Comparing the effects of rhythmic auditory cueing and visual cueing in acute hemiparetic stroke. *Int J Ther Rehabil.* (2012) 19. doi: 10.12968/ijtr.2012.19.6.344
  117. Secoli R, Milot MH, Rosati G, Reinkensmeyer DJ. Effect of visual distraction and auditory feedback on patient effort during robot-assisted movement training after stroke. *J Neuroeng Rehabil.* (2011) 8:21. doi: 10.1186/1743-0003-8-21
  118. Thielman G. Rehabilitation of reaching poststroke: a randomized pilot investigation of tactile versus auditory feedback for trunk control. *J Neurol Phys Ther.* (2010) 34:138–44. doi: 10.1097/NPT.0b013e3181efale8
  119. Johannsen L, Wing AM, Pelton T, Kitaka K, Zietz D, Brittle N, et al. Seated bilateral leg exercise effects on hemiparetic lower extremity function in chronic stroke. *Neurorehabil Neural Repair* (2010) 24:243–53. doi: 10.1177/1545968309347679
  120. Stoykov ME, Lewis GN, Corcos DM. Comparison of bilateral and unilateral training for upper extremity hemiparesis in stroke. *Neurorehabil Neural Repair* (2009) 23:945–53. doi: 10.1177/1545968309338190
  121. Richards LG, Senesac CR, Davis SB, Woodbury ML, Nadeau SE. Bilateral arm training with rhythmic auditory cueing in chronic stroke: not always efficacious. *Neurorehabil Neural Repair* (2008) 22:180–4. doi: 10.1177/1545968307305355
  122. Jeong S, Kim MT. Effects of a theory-driven music and movement program for stroke survivors in a community setting. *Appl Nurs Res.* (2007) 20:125–31. doi: 10.1016/j.apnr.2007.04.005
  123. Waller SM, Whittall J. Hand dominance and side of stroke affect rehabilitation in chronic stroke. *Clin Rehabil* (2005) 19:544–51. doi: 10.1191/0269215505cr829oa
  124. Thaut MH, Kenyon GP, Hurt CP, McIntosh GC, Hoemberg V. Kinematic optimization of spatiotemporal patterns in paretic arm training with stroke patients. *Neuropsychologia* (2002) 40:1073–81. doi: 10.1016/S0028-3932(01)00141-5
  125. Maulucci RA, Eckhouse RH. Retraining reaching in chronic stroke with real-time auditory feedback. *Neurorehabilitation* (2001) 16:171–82. Available online at: <https://content.iospress.com/articles/neurorehabilitation/nre00104>
  126. Whittall J, Waller SM, Silver KH, Macko RF. Repetitive bilateral arm training with rhythmic auditory cueing improves motor function in chronic hemiparetic stroke. *Stroke* (2000) 31:2390–5. doi: 10.1161/01.STR.31.10.2390
  127. de Morton NA. The PEDro scale is a valid measure of the methodological quality of clinical trials: a demographic study. *Austral J Physiother.* (2009) 55:129–33. doi: 10.1016/S0004-9514(09)70043-1
  128. Maher CG, Sherrington C, Herbert RD, Moseley AM, Elkins M. Reliability of the PEDro scale for rating quality of randomized controlled trials. *Phys Ther.* (2003) 83:713–21. doi: 10.1093/ptj/83.8.713
  129. Borenstein M, Hedges LV, Higgins J, Rothstein HR. A basic introduction to fixed-effect and random-effects models for meta-analysis. *Res Synth Methods* (2010) 1:97–111. doi: 10.1002/jrsm.12
  130. Higgins JPT, Green S. (eds). *Cochrane Handbook for Systematic Reviews of Interventions Version 5.1.0* [updated March 2011]. The Cochrane Collaboration (2011). Available online at: <http://handbook.cochrane.org>
  131. Cumming G. *Understanding the New Statistics: Effect Sizes, Confidence Intervals, and Meta-Analysis.* New York, NY: Routledge (2013).
  132. Cohen J. *Statistical Power Analysis for the Behavioral Sciences.* Hillsdale, NJ: L Erlbaum Associates (1988).
  133. Bolier L, Haverman M, Westerhof GJ, Riper H, Smit F, Bohlmeijer E. Positive psychology interventions: a meta-analysis of randomized controlled studies. *BMC Public Health* (2013) 13:119. doi: 10.1186/1471-2458-13-119

134. Poole JL, Whitney SL. Assessments of motor function post stroke. *Phys Occup Ther Geriatr.* (2001) 19:1–22. doi: 10.1080/J148v19n02\_01
135. Raghavan P. Upper limb motor impairment after stroke. *Phys Med Rehabil Clin N Am.* (2015) 26:599–610. doi: 10.1016/j.pmr.2015.06.008
136. Sullivan KJ, Tilson JK, Cen SY, Rose DK, Hershberg J, Correa A, et al. Fugl-Meyer assessment of sensorimotor function after stroke: standardized training procedure for clinical practice and clinical trials. *Stroke* (2011) 42:427–32. doi: 10.1161/STROKEAHA.110.592766
137. Duff SV, He J, Nelsen MA, Lane CJ, Rowe VT, Wolf SL, et al. Inter-rater reliability of the wolf motor function test-functional ability scale: why it matters. *Neurorehabil Neural Repair* (2015) 29:436–43. doi: 10.1177/1545968314553030
138. Nordin A, Alt Murphy M, Danielsson A. Intra-rater and inter-rater reliability at the item level of the Action Research Arm Test for patients with stroke. *J Rehabil Med.* (2014) 46:738–45. doi: 10.2340/16501977-1831
139. Ekstrand E, Lexell J, Brogårdh C. Test– retest reliability and convergent validity of three manual dexterity measures in persons with chronic stroke. *PM&R* (2016) 8:935–43. doi: 10.1016/j.pmrj.2016.02.014
140. Hallam S, Cross I, Thaut M. *Oxford Handbook of Music Psychology.* Oxford: Oxford University Press (2011).
141. Thaut MH. *Rhythm, Music, and the Brain: Scientific Foundations and Clinical Applications.* New York, NY: Routledge (2005).
142. Ghai S, Ghai I, Schmitz G, Effenberg AO. Effect of rhythmic auditory cueing on parkinsonian gait: a systematic review and meta-analysis. *Sci Rep.* (2018) 8:506. doi: 10.1038/s41598-017-16232-5
143. Fujioka T, Ween JE, Jamali S, Stuss DT, Ross B. Changes in neuromagnetic beta-band oscillation after music-supported stroke rehabilitation. *Ann NY Acad Sci.* (2012) 1252:294–304. doi: 10.1111/j.1749-6632.2011.06436.x
144. Keller PE, Novembre G, Hove MJ. Rhythm in joint action: psychological and neurophysiological mechanisms for real-time interpersonal coordination. *Philos Trans R Soc Lond B Biol Sci.* (2014) 369:20130394. doi: 10.1098/rstb.2013.0394
145. Cauraugh JH, Summers JJ. Neural plasticity and bilateral movements: a rehabilitation approach for chronic stroke. *Prog Neurobiol.* (2005) 75:309–20. doi: 10.1016/j.pneurobio.2005.04.001
146. Reelick MF, van Iersel MB, Kessels RPC, Rikkert MO. The influence of fear of falling on gait and balance in older people. *Age Ageing* (2009) 38:435–40. doi: 10.1093/ageing/afp066
147. Schinkel-Ivy A, Inness EL, Mansfield A. Relationships between fear of falling, balance confidence, and control of balance, gait, and reactive stepping in individuals with sub-acute stroke. *Gait Posture* (2016) 43:154–9. doi: 10.1016/j.gaitpost.2015.09.015
148. Rizzo JR, Raghavan P, McCreery JR, Oh-Park M, Verghese J. Effects of emotionally charged auditory stimulation on gait performance in the elderly: a preliminary study. *Arch Phys Med Rehabil* 96 690–6. doi: 10.1016/j.apmr.2014.12.004
149. Choi W, Lee G, Lee S. Effect of the cognitive-motor dual-task using auditory cue on balance of survivors with chronic stroke: a pilot study. *Clin Rehabil* (2015) 29:763–70. doi: 10.1177/0269215514556093
150. Hopkins K, Kass SJ, Blalock LD, Brill JC. Effectiveness of auditory and tactile crossmodal cues in a dual-task visual and auditory scenario. *Ergonomics* (2017) 60:692–700. doi: 10.1080/00140139.2016.1198495
151. Wickens CD. Multiple resources and mental workload. *Hum Factors* (2008) 50:449–55. doi: 10.1518/001872008X288394
152. Wickens C. Processing resources and attention. In: Parasuraman R, Davies R, editors. *Varieties of Attention.* New York, NY: Academic Press (1984).
153. Scerra VE, Brill JC. Effect of task modality on dual-task performance, response time, and ratings of operator workload. In: *Proceedings of the Human Factors and Ergonomics Society Annual Meeting.* Sage, CA; Los Angeles, CA: Sage Publications (2012) p. 1456–60.
154. Lu SA, Wickens CD, Prinert JC, Hutchins SD, Sarter N, Sebok A. Supporting interruption management and multimodal interface design: three meta-analyses of task performance as a function of interrupting task modality. *Hum Factors* (2013) 55:697–724. doi: 10.1177/0018720813476298
155. Sihvonen AJ, Särkämö T, Leo V, Tervaniemi M, Altenmüller E, Soinila S. Music-based interventions in neurological rehabilitation. *Lancet Neurol.* (2017) 16:648–60. doi: 10.1016/S1474-4422(17)30168-0
156. Särkämö T, Ripollés P, Vepsäläinen H, Autti T, Silvennoinen HM, Salli E, et al. Structural changes induced by daily music listening in the recovering brain after middle cerebral artery stroke: a voxel-based morphometry study. *Front Hum Neurosci* (2014) 8:245. doi: 10.3389/fnhum.2014.00245
157. Särkämö T, Altenmüller E, Rodríguez-Fornells A, Peretz I. Editorial: Music, brain, and rehabilitation: emerging therapeutic applications and potential neural mechanisms. *Front Hum Neurosci.* (2016) 10:103. doi: 10.3389/fnhum.2016.00103
158. Ghai S, Ghai I, Effenberg AO. “Low road” to rehabilitation: a perspective on subliminal sensory neuroprosthetics? *Neuropsychiatr Dis Treat.* (2018) 14:301–7. doi: 10.2147/NDT.S153392
159. Wolpert DM, Ghahramani Z, Jordan MI. An internal model for sensorimotor integration. *Science* (1995) 269:1880. doi: 10.1126/science.7569931
160. Wolpert DM, Diedrichsen J, Flanagan JR. Principles of sensorimotor learning. *Nature Rev Neurosci.* (2011) 12:739–51. doi: 10.1038/nrn3112
161. Rodger MWM, Craig CM. Beyond the metronome: auditory events and music may afford more than just interval durations as gait cues in Parkinson’s disease. *Front Neurosci.* (2016) 10:272. doi: 10.3389/fnins.2016.00272
162. Young W, Rodger M, Craig CM. Perceiving and reenacting spatiotemporal characteristics of walking sounds. *J Exp Psych.* (2013) 39:464. doi: 10.1037/a0029402
163. Bamiou DE. Hearing disorders in stroke. In: *Handbook of Clinical Neurology.* Elsevier (2015) p. 633–47.
164. Ghai S, Ghai I, Effenberg AO. Effect of rhythmic auditory cueing on gait in cerebral palsy: a systematic review and meta-analysis. *Neuropsychiatr Dis Treat.* (2018) 14:43–59. doi: 10.2147/NDT.S148053
165. Young WR, Shreve L, Quinn EJ, Craig C, Bronte-Stewart H. Auditory cueing in Parkinson’s patients with freezing of gait. What matters most: action-relevance or cue-continuity? *Neuropsychologia* (2016) 87:54–62. doi: 10.1016/j.neuropsychologia.2016.04.034
166. Young WR, Rodger MW, Craig CM. Auditory observation of stepping actions can cue both spatial and temporal components of gait in Parkinson’s disease patients. *Neuropsychologia* (2014) 57:140–53. doi: 10.1016/j.neuropsychologia.2014.03.009
167. Peng YC, Lu TW, Wang TH, Chen YL, Liao HF, Lin KH, et al. Immediate effects of therapeutic music on loaded sit-to-stand movement in children with spastic diplegia. *Gait Posture* (2011) 33:274–8. doi: 10.1016/j.gaitpost.2010.11.020
168. Tagliabue M, McIntyre J. A modular theory of multisensory integration for motor control. *Front Comput Neurosci.* (2014) 8:1. doi: 10.3389/fncom.2014.00001
169. Iacoboni M, Koski LM, Brass M, Bekkering H, Woods RP, Dubeau MC, et al. Reafferent copies of imitated actions in the right superior temporal cortex. *Proc Natl Acad Sci USA.* (2001) 98:13995–9. doi: 10.1073/pnas.241474598
170. Decety J, Grèzes J. Neural mechanisms subserving the perception of human actions. *Trends Cogn Sci.* (1999) 3:172–8. doi: 10.1016/S1364-6613(99)01312-1
171. Shams L, Seitz AR. Benefits of multisensory learning. *Trends Cogn Sci.* (2008) 12:411–7. doi: 10.1016/j.tics.2008.07.006
172. Lahav A, Saltzman E, Schlaug G. Action representation of sound: audiomotor recognition network while listening to newly acquired actions. *J Neurosci.* (2007) 27:308–14. doi: 10.1523/JNEUROSCI.4822-06.2007
173. Vinken PM, Kröger D, Fehse U, Schmitz G, Brock H, Effenberg AO. Auditory coding of human movement kinematics. *Multisens Res.* (2013) 26:533–52. doi: 10.1163/22134808-00002435
174. Inglis JT, Horak FB, Shupert CL, Jones-Rycewicz C. The importance of somatosensory information in triggering and scaling automatic postural responses in humans. *Exp Brain Res.* (1994) 101:159–64. doi: 10.1007/BF00243226
175. Thaut MH, McIntosh GC, Prassas SG, Rice RR. Effect of rhythmic auditory cueing on temporal stride parameters and EMG. Patterns in hemiparetic gait of stroke patients. *J Neurol Rehabil* (1993) 7:9–16. doi: 10.1177/136140969300700103
176. Thaut MH, McIntosh GC, Prassas SG, Rice RR. Effect of rhythmic auditory cueing on temporal stride parameters and EMG patterns in normal gait. *J Neurol Rehabil.* (1992) 6:185–90. doi: 10.1177/136140969200600403

177. Thaut M, Schleiffers S, Davis W. Analysis of EMG activity in biceps and triceps muscle in an upper extremity gross motor task under the influence of auditory rhythm. *J Music Ther.* (1991) 28:64–88. doi: 10.1093/jmt/28.2.64
178. Kaur P, Kwatra G, Kaur R, Pandian JD. Cost of stroke in low and middle income countries: a systematic review. *Int J Stroke* (2014) 9:678–82. doi: 10.1111/ijss.12322
179. Sharma S, Padma MV, Bhardwaj A, Sharma A, Sawal N, Thakur S. Telestroke in resource-poor developing country model. *Neurol India* (2016) 64:934–40. doi: 10.4103/0028-3886.190243
180. Lopez WO, Higuera CA, Fonoff ET, Souza Cde O, Albicker U, Martinez JA. Listenmee and Listenmee smartphone application: synchronizing walking to rhythmic auditory cues to improve gait in Parkinson's disease. *Hum Mov Sci.* (2014) 37:147–56. doi: 10.1016/j.humov.2014.08.001
181. Muto T, Herzberger B, Hermsdoerfer J, Miyake Y, Poeppel E. Interactive cueing with walk-mate for hemiparetic stroke rehabilitation. *J Neuroeng Rehabil.* (2012) 9:58. doi: 10.1186/1743-0003-9-58
182. Elia N, von Elm E, Chatagner A, Pöpping DM, Tramèr MR. How do authors of systematic reviews deal with research malpractice and misconduct in original studies? A cross-sectional analysis of systematic reviews and survey of their authors. *BMJ Open* (2016) 6:e010442. doi: 10.1136/bmjopen-2015-010442
183. Nascimento LR, de Oliveira CQ, Ada L, Michaelsen SM, Teixeira-Salmela LF. Walking training with cueing of cadence improves walking speed and stride length after stroke more than walking training alone: a systematic review. *J Physiother.* (2015) 61:10–5. doi: 10.1016/j.jphys.2014.11.015
184. Ghai S, Ghai I. Effects of rhythmic auditory cueing in gait rehabilitation for multiple sclerosis: a mini systematic review and meta-analysis. *Front Neurol.* (2018) 9. doi: 10.3389/fneur.2018.00386
185. Rocha PA, Porfirio GM, Ferraz HB, Trevisani VF. Effects of external cues on gait parameters of Parkinson's disease patients: a systematic review. *Clin Neurol Neurosurg.* (2014) 124:127–34. doi: 10.1016/j.clineuro.2014.06.026

**Conflict of Interest Statement:** The author declares that the research was conducted in the absence of any commercial or financial relationships that could be construed as a potential conflict of interest.

Copyright © 2018 Ghai. This is an open-access article distributed under the terms of the Creative Commons Attribution License (CC BY). The use, distribution or reproduction in other forums is permitted, provided the original author(s) and the copyright owner(s) are credited and that the original publication in this journal is cited, in accordance with accepted academic practice. No use, distribution or reproduction is permitted which does not comply with these terms.