




## Research Article

# Early Changes in Tumor Perfusion from T1-Weighted Dynamic Contrast-Enhanced MRI following Neural Stem Cell-Mediated Therapy of Recurrent High-Grade Glioma Correlate with Overall Survival

Prativa Sahoo,<sup>1</sup> Paul Frankel,<sup>2</sup> Julie Ressler,<sup>3</sup> Margarita Gutova,<sup>4</sup> Alexander J. Annala,<sup>4</sup> Behnam Badie ,<sup>5</sup> Jana Portnow,<sup>6</sup> Karen S. Aboody,<sup>4,5</sup> Massimo D'Apuzzo ,<sup>7</sup> and Russell C. Rockne <sup>1</sup>

<sup>1</sup>Division of Mathematical Oncology, Beckman Research Institute, City of Hope, Duarte, CA, USA

<sup>2</sup>Division of Biostatistics, Beckman Research Institute, City of Hope, Duarte, CA, USA

<sup>3</sup>Diagnostic Radiology, City of Hope, Duarte, CA, USA

<sup>4</sup>Department of Developmental & Stem Cell Biology, Beckman Research Institute, City of Hope, Duarte, CA, USA

<sup>5</sup>Division of Neurosurgery, City of Hope, Duarte, CA, USA

<sup>6</sup>Department of Medical Oncology & Therapeutics, City of Hope, Duarte, CA, USA

<sup>7</sup>Department of Pathology, City of Hope, Duarte, CA, USA

Correspondence should be addressed to Russell C. Rockne; rrockne@coh.org

Received 16 November 2017; Accepted 24 January 2018; Published 14 March 2018

Academic Editor: Shawn Hingtgen

Copyright © 2018 Prativa Sahoo et al. This is an open access article distributed under the Creative Commons Attribution License, which permits unrestricted use, distribution, and reproduction in any medium, provided the original work is properly cited.

**Background.** The aim of this study was to correlate T1-weighted dynamic contrast-enhanced MRI- (DCE-MRI-) derived perfusion parameters with overall survival of recurrent high-grade glioma patients who received neural stem cell- (NSC-) mediated enzyme/prodrug gene therapy. **Methods.** A total of 12 patients were included in this retrospective study. All patients were enrolled in a first-in-human study (NCT01172964) of NSC-mediated therapy for recurrent high-grade glioma. DCE-MRI data from all patients were collected and analyzed at three time points: MRI#1—day 1 postsurgery/treatment, MRI#2— day 7 ± 3 posttreatment, and MRI#3—one-month follow-up. Plasma volume ( $V_p$ ), permeability ( $K^{tr}$ ), and leakage ( $\lambda^{tr}$ ) perfusion parameters were calculated by fitting a pharmacokinetic model to the DCE-MRI data. The contrast-enhancing (CE) volume was measured from the last dynamic phase acquired in the DCE sequence. Perfusion parameters and CE at each MRI time point were recorded along with their relative change between MRI#2 and MRI#3 ( $\Delta_{32}$ ). Cox regression was used to analyze patient survival. **Results.** At MRI#1 and at MRI#3, none of the parameters showed a significant correlation with overall survival (OS). However, at MRI#2, CE and  $\lambda^{tr}$  were significantly associated with OS ( $p < 0.05$ ). The relative  $\lambda^{tr}$  and  $V_p$  from timepoint 2 to timepoint 3 ( $\Delta_{32}\lambda^{tr}$  and  $\Delta_{32}V_p$ ) were each associated with a higher hazard ratio ( $p < 0.05$ ). All parameters were highly correlated, resulting in a multivariate model for OS including only CE at MRI#2 and  $\Delta_{32}V_p$ , with an  $R^2$  of 0.89. **Conclusion.** The change in perfusion parameter values from 1 week to 1 month following NSC-mediated therapy combined with contrast-enhancing volume may be a useful biomarker to predict overall survival in patients with recurrent high-grade glioma.

## 1. Introduction

High-grade glioma, including glioblastoma (GBM), is the most aggressive type of primary brain tumor. Despite the

use of multimodality therapy including surgical resection, chemotherapy, and radiation therapy (RT), the median survival of GBM patients is less than 2 years from diagnosis and only 6 months from recurrence [1]. Previous studies

have demonstrated that imaging techniques such as contrast-enhanced magnetic resonance imaging (MRI) can be used in the evaluation of GBM after combined RT and temozolomide (TMZ) therapy (RT-TMZ) [2–4]. With the recent development of cell-mediated therapies, which may induce transient changes in the tumor microenvironment that may be misconstrued as tumor progression, there is an even greater urgency to discover early indicators of response to treatment and correlate these indicators with outcomes including overall survival. T1-weighted dynamic contrast-enhanced MRI (DCE-MRI) sequences are becoming a widely available method for the quantification of perfusion in the brain. DCE-MRI-based perfusion and permeability measures such as the contrast transfer coefficient, blood volume, and blood flow have been proposed as biomarkers for glioma grading [5, 6] and survival prediction following RT-TMZ treatment [2, 7]. Analyzing perfusion parameters derived from DCE-MRI may provide vital information for more accurate assessment of tumor response or progression to a given treatment, including cell-mediated therapies.

Neural stem cells (NSCs), due to their inherent tumor tropism, have the ability to migrate through brain tissue, providing a vehicle to deliver therapeutic agents selectively to invasive glioma foci [8]. NSC-mediated enzyme/prodrug therapies are now being assessed in phase I trials as potential treatment options for patients with GBM [9–12]. Assessing response during or after treatment is critical to optimizing efficacy. NSC targeting of tumor cells may produce alterations in the tumor microenvironment, including changes in blood flow and vascularization. The use of perfusion imaging, DCE-MRI, to assess treatment response of NSC-mediated therapy [10] may have significant clinical impact in evaluating early response to these therapies and has not been previously reported. The objective of this study was to evaluate changes in DCE-MRI-derived perfusion parameters before and after NSC-mediated therapy in patients with recurrent high-grade glioma and to correlate these changes with outcomes as measured by overall survival.

## 2. Patient Selection

Patients were enrolled in a first-in-human pilot safety/feasibility dose escalation clinical trial (NCT01172964) using genetically modified NSCs expressing *E. coli* cytosine deaminase (CD), which converts the prodrug 5-fluorocytosine (5-FC) into the active chemotherapeutic agent 5-fluorouracil (5-FU). Patients were treated on one of the three CD-NSC dose levels: dose 1 ( $10 \times 10^6$  CD-NSCs, 75 mg/kg/day 5-FC), dose 2 ( $10 \times 10^6$  CD-NSCs, 150 mg/kg/day 5-FC), or dose 3 ( $50 \times 10^6$  CD-NSCs, 150 mg/kg/day 5-FC). Details of the treatment schedule, inclusion criteria, and exclusion criteria were previously described [10]. A total of 15 patients ranging from 22 to 63 years old, with a median age of 46, received treatment with CD-NSCs and oral 5-FC. All patients underwent T1-weighted DCE-MRI on a 3T scanner (Verio, Siemens Healthcare, Erlangen, Germany) at three time points: MRI#1 was taken one day after the surgery, during which CD-NSCs were administered along with a catheter placed for additional treatments, followed by a 7-day course

of oral 5-FC; MRI#2 was taken  $7 \pm 3$  days after MRI#1; and MRI#3 was taken one month ( $25 \pm 5$  days) after MRI#2. MRI scans of all patients were collected and analyzed retrospectively. Three patients were excluded from this study: one patient did not complete the treatment, one patient did not have a one-month follow-up MRI, and one patient's MRI data could not be analyzed due to motion artifact. Therefore, a total 12 patients were included in this analysis. Three patients were treated with dose level 1, 3 patients with dose level 2, and 6 patients with dose level 3. All 12 patients were deceased at the time of data analysis. This study was approved by the local institutional review board.

## 3. Material and Methods

**3.1. Quantification of Perfusion Parameters.** A three-compartment pharmacokinetic leaky tracer kinetic model (LTKM) was fitted to the concentration time curve, and fractional plasma volume ( $V_p$ ), permeability ( $K^{tr}$ ), and leakage ( $\lambda^{tr}$ ) were estimated as previously reported [7]. In-house JAVA-based software was used for all DCE computations. Details of the imaging parameters and postprocessing of DCE-MRI data are given in the Supplementary Materials.

**3.2. Region of Interest (ROI).** As a clinical measurement of lesion size, the last dynamic phase of DCE data was used to identify the lesion on each 2D slice where the lesion was visible. ROIs were drawn manually on each slice, covering the enhancing and nonenhancing components of the whole lesion. Regions of normal vasculature were avoided while drawing these regions of interest. The total number of voxels in the ROI was used as a measure of total contrast enhancement (CE) and of total tumor volume. Only the voxels inside the manual ROI that showed a confidence level of at least 80% in the kinetic model fitting were selected as a mask to exclude voxels with low or noisy contrast enhancement. The mask was then applied to the ROI for both the perfusion and diffusion images. Selecting voxels with the kinetic model includes both early- and late-phase enhancing voxels. For each patient, the mean values for each kinetic parameter for the entire tumor volume were used for statistical analysis.

**3.3. Comparison of Histology and Imaging.** Due to the heterogeneity of imaging and histological findings in high-grade glioma and since it is not possible to know the precise location of a surgical specimen relative to imaging findings, we did not perform a correlative analysis of histology and imaging findings for all patients. Instead, we selected two patients which represented the extreme and opposite MRI perfusion characteristics to demonstrate the consistency of imaging and histological findings. We used the maximum leakage ( $\lambda^{tr}$ ) and maximum plasma volume ( $V_p$ ) values within the tumor volume to compare with tissue immunohistochemistry. Presurgical perfusion and diffusion MRI scans were collected for these two cases, and the imaging findings were compared with the histological findings. The surgical

TABLE 1: Cox proportional hazards survival regression results of perfusion parameters and apparent diffusion coefficient (ADC) as continuous measures at all time points MRI#1, MRI#2, and MRI#3.  $\Delta$  represents the relative change.  $\Delta_{32} = \ln(\text{MRI}\#3/\text{MRI}\#2)$ , and  $\Delta_{21} = \ln(\text{MRI}\#2/\text{MRI}\#1)$ .

Parameters	Statistics	MRI#1	MRI#2	MRI#3	$\Delta_{21}$	$\Delta_{32}$
$V_p$	<i>p</i> value					<0.01*
	HR	NS	NS	NS	NS	20.67
	CI					[2.5,170.1]
$\lambda^{\text{tr}}$	<i>p</i> value		<0.05*		<0.05*	<0.01*
	HR	NS	0.47	NS	0.17	17.08
	CI		[0.23, 0.98]		[0.03, 0.9]	[1.71, 171]
$K^{\text{trans}}$	<i>p</i> value					
	HR	NS	NS	NS	NS	NS
	CI					
CE	<i>p</i> value		<0.05*			<0.05*
	HR	NS	2.13	NS	NS	2.02
	CI		[1.01, 4.5]			[1.03, 3.98]
ADC	<i>p</i> value					
	HR	NS	NS	NS	NS	NS
	CI					

\*Statistically significant. HR: hazard ratio; CI: 95% confidence interval; NS: not significant. *p* value for Wald's test.

tissue specimens were analyzed by a board-certified neuropathologist (MD'A).

**3.4. Statistical Analysis.** Relative change between perfusion parameters at MRI#2 and MRI#3 was calculated as  $\Delta = \log(\text{MRI}\#3/\text{MRI}\#2)$  and denoted with  $\Delta_{32}$ , with an analogous convention for the change between MRI#1 and MRI#2. Overall patient survival (OS) was measured from the time of MRI#3 to patient death. Cox regression analysis was performed to correlate MRI imaging parameters  $K^{\text{tr}}$ ,  $V_p$ ,  $\lambda^{\text{tr}}$ , CE, and ADC and their relative change with OS. We report the hazard ratio, its confidence interval, and the Wald statistic which is the most conservative statistic in this setting. Relative change between perfusion parameters was included in the model so the HR relates to a 100% increase (using the log of the ratio as a measure of relative change), while parametric values were normalized by mean and standard deviation so the HR relates to the change in risk associated with a one-standard deviation increase in the parameter. Evaluating the parameter as a continuous variable, we used the upper tertile as a cut-off for presentation purposes for the key variables, and the statistics associated with those cut-offs are included. Because of the number of variables considered, we chose to include variables in multivariate analysis and Kaplan-Meier survival plots only if the results were statistically significant at  $p \leq 0.05$ . One-way analysis of variance (ANOVA) was performed to analyze the variation in the perfusion parameters with respect to the dose level of NSCs. All statistical tests were two-sided, and significance was considered at a value of  $p < 0.05$ . The statistical software package R, version 3.0.2 (The R Foundation for Statistical Computing, <http://www.r-project.org/>), was used to perform all statistical analyses.

## 4. Results

**4.1. Survival Analysis.** Cox proportional hazards survival regression results are presented in Table 1. On univariate analysis, none of the parameters showed significant correlation with OS at time points MRI#1 and MRI#3. At MRI#2, the parameters  $\lambda^{\text{tr}}$  and CE were significantly associated with OS with  $p < 0.05$ . The change in the parameter value from MRI#2 to MRI#3 ( $\Delta_{32}$ ) for the parameters  $\lambda^{\text{tr}}$ ,  $V_p$ , and CE was significantly associated with OS with increased hazard ( $p < 0.05$ ). However,  $\Delta_{21}\lambda^{\text{tr}}$  and  $\lambda^{\text{tr}}$  at MRI#2 were associated with lower hazard ( $p < 0.05$ ). Parameters selected for multivariate analysis were  $\lambda^{\text{tr}}$  at MRI#2; CE at MRI#2;  $\Delta_{21}\lambda^{\text{tr}}$ ; and  $\Delta_{32}V_p$ ,  $\Delta_{32}K^{\text{tr}}$ , and  $\Delta_{32}\lambda^{\text{tr}}$ . ADC did not show any significant correlation with OS at any of the imaging time points. Perfusion parameters and their changes were correlated, resulting in the multivariate model for OS including only CE at MRI#2 and  $\Delta_{32}V_p$ . Only CE at MRI#2 gives a prediction with  $R^2$  of 0.26, and when adding  $\Delta_{32}V_p$  to the CE at MRI#2, the prediction improves with  $R^2$  of 0.89. Using the upper tertile,  $\Delta_{32}V_p$  (>80% increase) was associated with a median OS of 4.5 months (95% confidence interval (CI): 0.13-NR) versus 14.5 months for  $\Delta_{32}V_p \leq 80\%$  increase (CI: 11.0-NR,  $p < 0.05$ , Wald's test). The upper tertile of CE at MRI#2 (>0.5 SD above the mean) was associated with a median OS of 4.5 months (CI: 2.0-NR) versus 14.5 months for the lower 2/3 of the cases (CI: 9-NR,  $p < 0.05$ ). A combined multivariable model is significant using both  $\Delta_{32}V_p$  and CE at MRI#2 as continuous variables or dichotomized with values above their respective cut-offs. The Kaplan-Meier survival curves for  $\Delta_{32}V_p$ ,  $\Delta_{32}\lambda^{\text{tr}}$ ,  $\Delta_{32}\text{CE}$ , and  $\lambda^{\text{tr}}$  at MRI#2; CE at MRI#2; and  $\Delta_{21}\lambda^{\text{tr}}$  are shown in Figure 1. The survival curves between two groups were significantly different for the

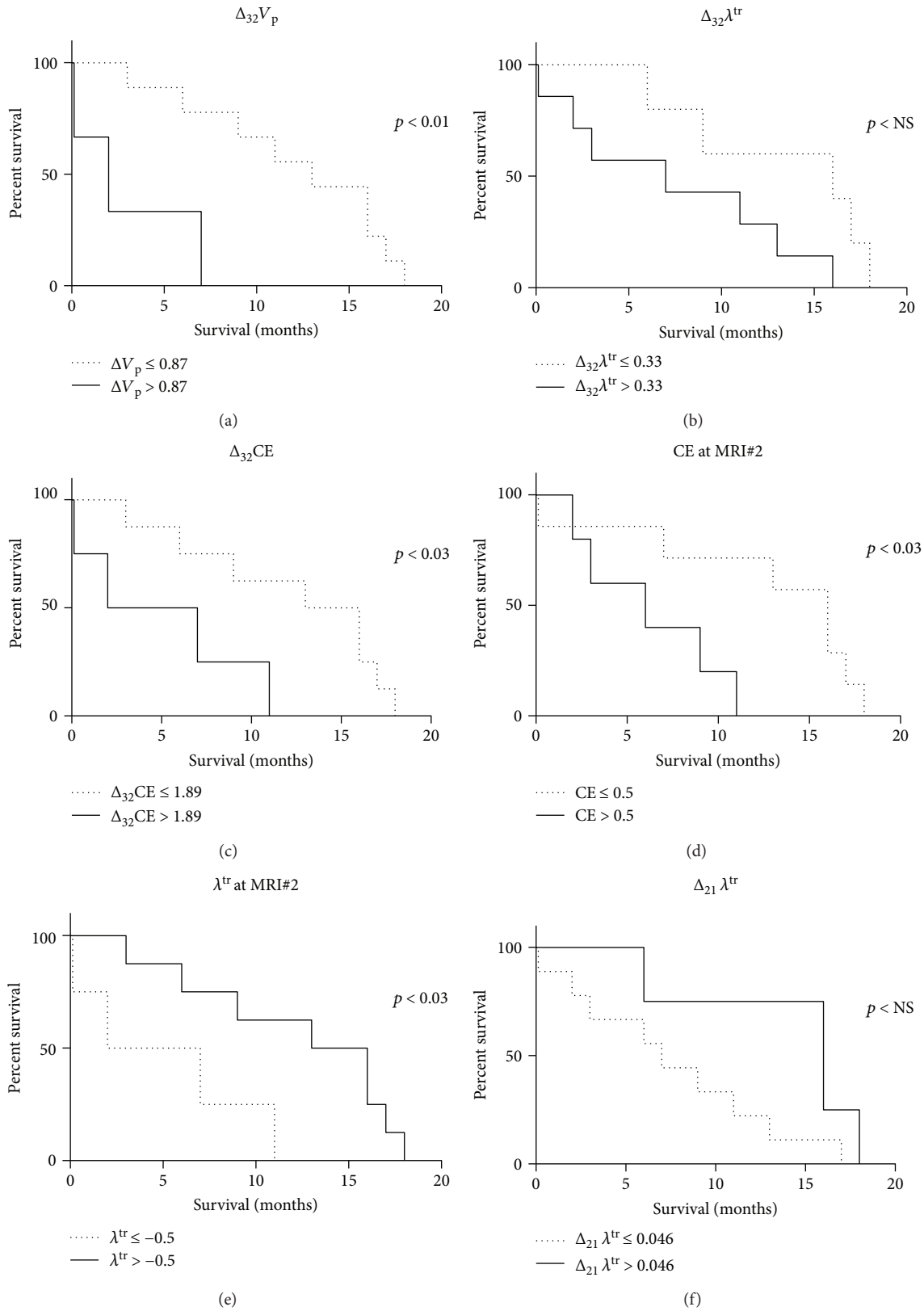


FIGURE 1: Survival analysis of perfusion kinetic parameters. Kaplan-Meier survival curves indicate that overall patient survival is significantly increased with decreased (a)  $\Delta_{32}V_p$ , (b)  $\Delta_{32}\lambda^{tr}$ , (c)  $\Delta_{32}CE$ , and (d) CE at MRI#2. Survival increase is associated with an increase in (e)  $\lambda^{tr}$  at MRI#2 and (f)  $\Delta_{21}\lambda^{tr}$ .

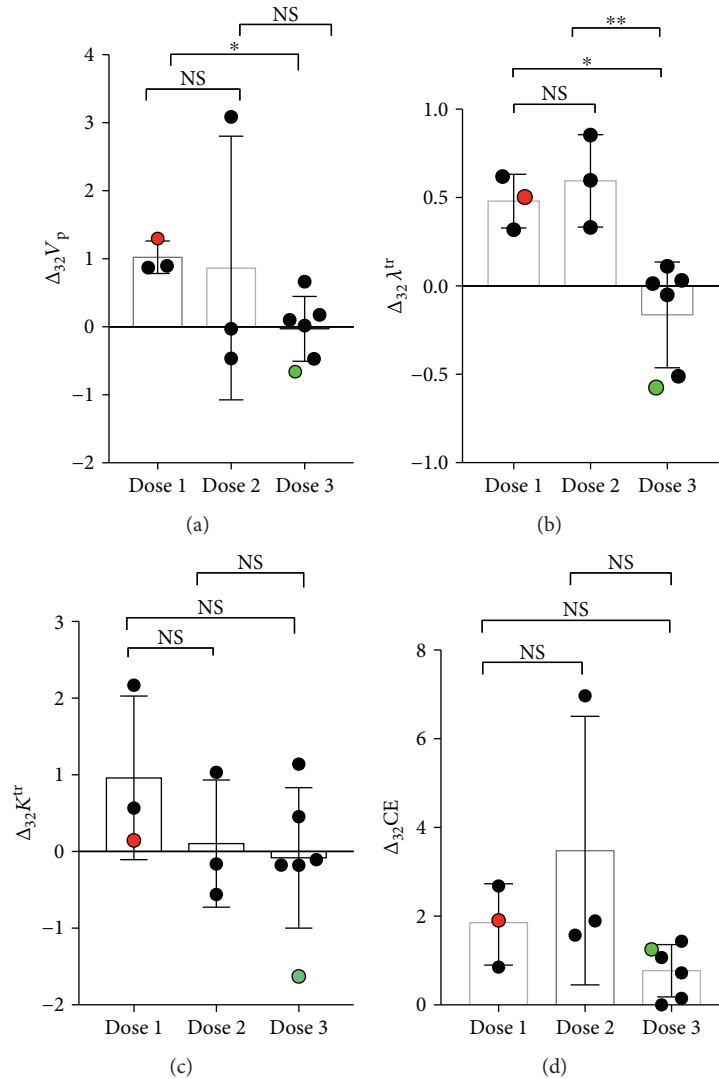


FIGURE 2: Perfusion kinetics vary with NSC and 5-FC dose level. The relative change in plasma volume (a)  $\Delta_{32}V_p$  and leakage (b)  $\Delta_{32}\lambda^{tr}$  varies significantly ( $p < 0.05$ ) from dose 1 to dose 2 of NSCs. However, (c)  $\Delta_{32}K^{tr}$  and (d)  $\Delta_{32}CE$  did not show any significant change with respect to the dose level of NSCs. Patients selected for histological analysis in Figures 3 and 4 are shown in red and green circles, respectively. \* $p < 0.05$ , \*\* $p < 0.01$ .

parameters  $\Delta_{32}V_p$ ,  $\Delta_{32}CE$ , and  $\lambda^{tr}$  at MRI#2 and CE at MRI#2; however, it was not significant for  $\Delta_{32}\lambda^{tr}$  and  $\Delta_{21}\lambda^{tr}$ .

**4.2. Survival with respect to Dose Level of NSCs.** One-way ANOVA showed that the relative change in plasma volume ( $\Delta_{32}V_p$ ) and leakage ( $\Delta_{32}\lambda^{tr}$ ) significantly decreased ( $p < 0.01$ ) from dose 1 to dose 3 (Figure 2). The mean  $\Delta V_p$  values for dose 1 and dose 3 were 1.8 (SD=0.4,  $n = 3$ ) and 0.07 (SD=0.2,  $n = 6$ ), respectively. The mean  $\Delta\lambda^{tr}$  values for dose 1 and dose 3 were 0.63 (SD=0.14,  $n = 3$ ) and  $-0.12$  (SD=0.1,  $n = 6$ ), respectively. No significant difference in CE was found with respect to the dose level of CD-NSC (Figure 2). Overall patient survival also did not show any statistically significant correlation with the dose level of NSC.

**4.3. Comparison of Imaging and Histological Findings.** The imaging findings of perfusion and cellularity were consistent

with the gross histological findings for the two patients selected to represent the high and low range of perfusion characteristics in this patient population (Figure 2; case 1 (red) and case 2 (green)). In case 1, imaging showed heterogeneous contrast enhancement with increased perfusion (increased  $V_p$  and  $\lambda^{tr}$ ). The haematoxylin and eosin (H&E) preparations of the specimen of case 1 showed a markedly cellular recurrent GBM, displaying increased mitotic activity and pseudopalisading necrosis. Numerous newly formed glomeruloid vessels with characteristic features of microendothelial proliferation were frequently seen (Figure 3). In contrast, case 2 showed a moderate ring enhancement with central necrosis in a T1-weighted postcontrast image. DCE-MRI-derived parameters showed moderate leakage and slightly increased plasma volume ( $V_p$ ). The H&E preparations of the specimen of case 2 showed low-to-moderate cellularity with areas of hyalinizing necrosis, devoid of nuclear pseudopalisading (Figure 4). The

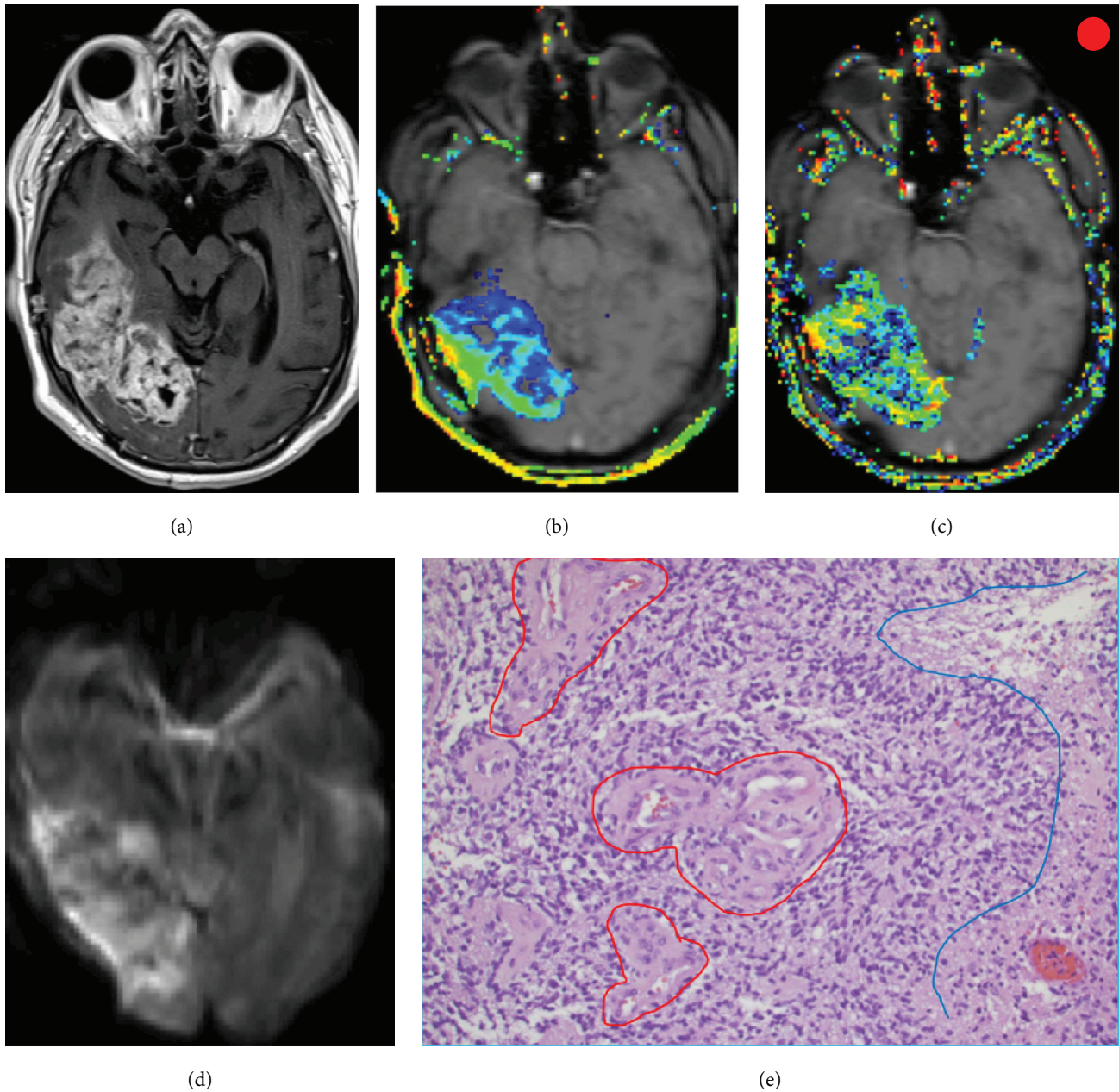


FIGURE 3: Presurgical images of a 53-year old GBM patient show a heterogenous contrast enhancement on the T1 postcontrast image (a), disrupted blood brain barrier and increased vessel density on leakage  $\lambda^{tr}$  (b) and  $V_p$  (c) maps overlaid on the T1-weighted image, and high cellularity on DWI (d). Histologic specimen (e) shows marked cellularity, frequent microendothelial proliferation (circled in red), and pseudopalisading necrosis (blue line). The patient received CD-NSCs on dose level 1, and the overall survival after NSC treatment was 2 months. The red circle on the top right corner corresponds to the red data points in Figure 2.

microvasculature was predominantly devoid of proliferative endothelium and frequently surrounded by sclerosis.

## 5. Discussion

We analyzed the T1-weighted DCE-MRI perfusion parameters ( $K^{tr}$ ,  $V_p$ , and  $\lambda^{tr}$ ) and contrast enhancement measured at initiation and completion of NSC+5-FC treatment and at one-month follow-up to evaluate changes in perfusion parameters

and their correlation with overall survival of patients with recurrent high-grade glioma. In addition, we explored the variability in perfusion parameter values with respect to the NSC dose level. The change in  $V_p$ ,  $\lambda^{tr}$ , and CE between the end of treatment and follow-up at one month showed significant negative correlation with overall survival while the change in  $K^{tr}$  and ADC did not. At the end of treatment (MRI#2), the leakage parameter  $\lambda^{tr}$  showed a positive correlation with OS. There was a significant change in the relative change in plasma volume

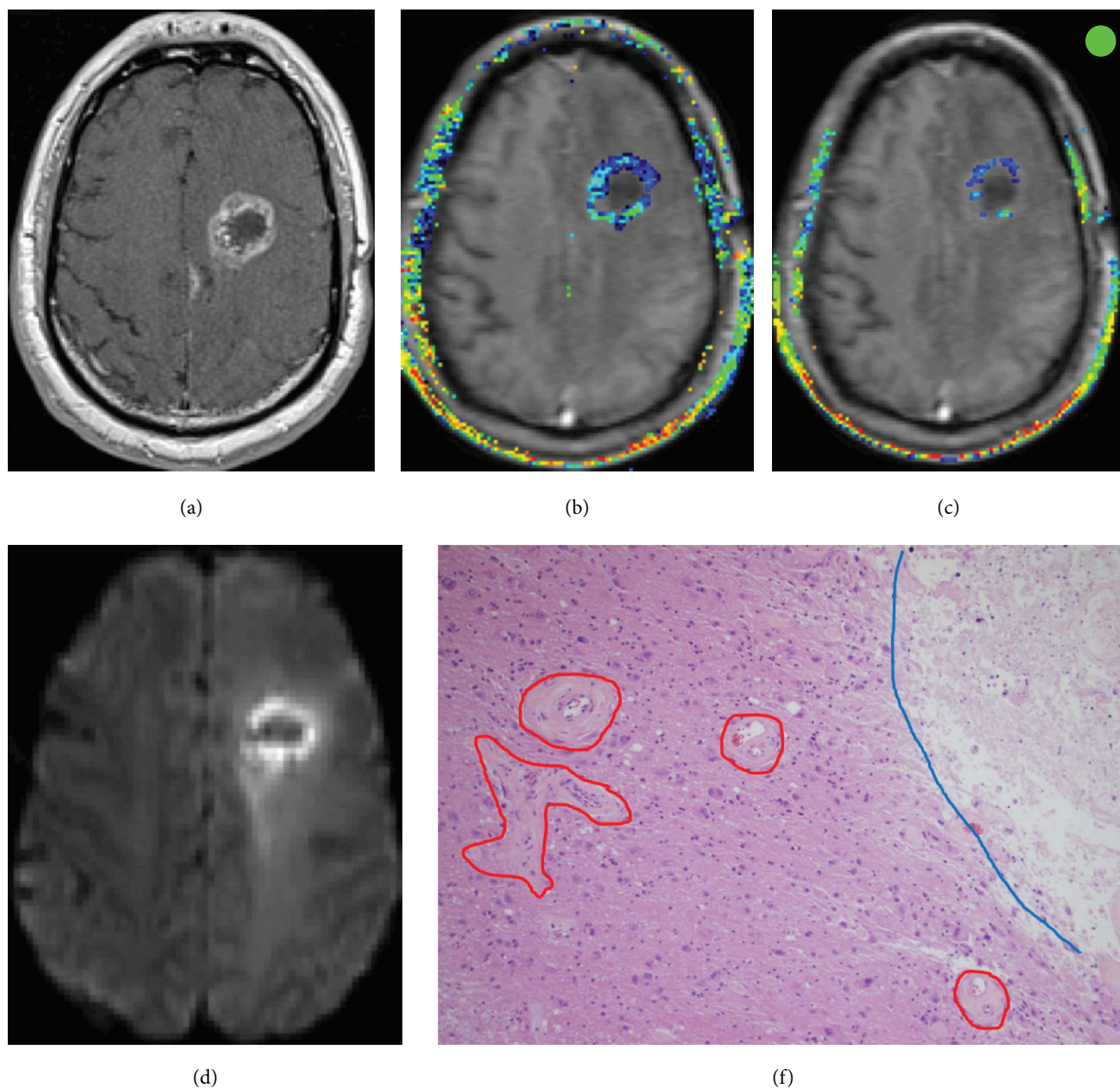


FIGURE 4: Presurgical images of a 52-year old GBM patient show a ring-enhancing mass with central necrosis on the T1 postcontrast image (a), disrupted blood brain barrier on leakage  $\lambda^{tr}$  (b) and vessel density on  $V_p$  (c) maps overlaid on the T1-weighted image, and cellularity on the diffusion-weighted image (DWI) (d). Histologic specimen (e) shows low-to-moderate cellularity, sclerosed microvasculature (circled in red), and hyalinizing necrosis (blue line). The patient received CD-NSCs on dose level 3, and the overall survival after NSC treatment was 18 months. The green circle on the top right corner corresponds to the green data points in Figure 2.

( $\Delta_{32}V_p$ ) and leakage ( $\Delta_{32}\lambda^{tr}$ ) observed between dose 1 and dose 3, suggesting a dose-dependent effect on the changes in perfusion in the tumor microenvironment associated with the NSC-mediated therapy.

Response to treatment for high-grade glioma is generally evaluated on MR images using the Response Assessment in Neuro-Oncology (RANO) criteria in which change in tumor size on postcontrast images is a major component. However, increased tumor size in a contrast-enhanced T1-weighted image does not always reflect true progression.

Pseudoprogression could be related to postsurgical changes, treatment-induced inflammation, and ischemia [16]. These factors might be the reasons why contrast-enhancing volume alone showed the lowest hazard ratio as compared to other perfusion parameters with  $R^2 = 0.26$  at the end of treatment. When adding the relative change in plasma volume ( $\Delta_{32}V_p$ ) to the CE at MRI#2, the prediction improves with  $R^2 = 0.89$ . Several studies have focused on quantitative imaging sequences including DCE-MRI, to assist clinicians in evaluating response to treatment more accurately [2–4, 17, 18].

Histologically, progressive high-grade glioma involves neoangiogenesis, resulting in high permeability and disrupted blood brain barrier (BBB). Several studies have demonstrated that relative cerebral blood volume (rCBV) (a perfusion parameter derived from DCE-MRI) correlates with tumor aggressiveness, microvessel density, and patient survival in GBM patients [2, 19]. Disrupted BBB leads to the increase in contrast material leakage into the extravascular extracellular space (EES), with a subsequent increased image contrast which results in overestimation or underestimation of rCBV with DCE-MRI. For this reason, leakage correction in rCBV quantification has been investigated and shown to provide a more reliable estimation of blood volume [19, 20]; therefore, we use the kinetic parameter  $V_p$  as a measure of blood volume in this study. In general,  $V_p$  is defined as the fractional plasma volume; however,  $V_p$  can be converted into blood volume by multiplying it with the proportionality constant ( $\rho/H$ ), where  $\rho$  is the assumed brain tissue density (1.05 g/ml) and  $H = (1 - H_{art}) / (1 - H_{cap})$  to account for the difference in hematocrit between capillaries and large vessels (in this study,  $H_{cap} = 0.25$  and  $H_{art} = 0.45$ ) [21].

In our study, all MRI data were postoperative. We did not find any significant correlation between the perfusion parameters and patient survival at the postoperative, pre-5-FC time point (MRI#1). This is likely because there is very little residual tumor or contrast enhancement immediately following surgery. Interestingly, leakage  $\lambda^{tr}$  and CE showed a significant ( $p < 0.05$ ) correlation with overall survival for MRI#2, with CE negatively correlated and  $\lambda^{tr}$  positively correlated with OS. Although this is a small retrospective study, these findings suggest that a higher mean leakage in the tumor volume at the beginning of treatment may predict a positive response to the treatment. Because the BBB restricts the ability of drugs to reach their site of action, a larger leakage could facilitate the perfusion of enzyme-activating drugs through the tumor resulting in improved treatment efficacy. ADC has been shown to be inversely related to cell density in tumor tissue. Homing of NSCs in cancer tissue may therefore decrease ADC, while delivery of chemo can cause cell death resulting in increased ADC. The combination of these effects may explain why ADC did not show significant correlation with overall survival.

To ground our imaging findings with histological features, we selected two patients that represented extreme and opposite perfusion characteristics. Due to the inability to precisely determine the origin of the tissue specimen to regions in the imaging, we qualitatively compared the imaging findings to the gross histological features of cell density, vascular proliferation, microvasculature, and necrosis and found the imaging-derived estimates to be consistent with the histologic findings. In both cases, the imaging findings were consistent with the gross histologic features found in the tissue specimens collected at the time of surgery, prior to NSC therapy.

NSC dose may affect perfusion parameters; however, in the present study, the patient cohort at the individual dose level is very small for any conclusive result and the dose levels

used in this study are a combination of NSC dose and 5-FC dose. Changes in perfusion could be related to homing of NSCs to the tumor site resulting in normalized/repared tumor vessels, can be the result of the therapeutic antivasular effects of 5-FU, or both. Additionally, the surgical manipulation would likely impact the measured perfusion parameters. We cannot rule out the possibility that the surgical manipulations that correlated with the best clinical outcome and ability to maximize the activity of the NSCs were reflected in the perfusion parameters, resulting in the association of the perfusion parameters with overall survival. Moreover, changes in perfusion can also depend upon tumor type, localization, NSC survival, homing and inhibition, delivery of 5-FC, and activation of 5-FU. Understanding the effect of NSCs and antivasular effects of 5-FU individually on perfusion parameters requires further investigation.

In conclusion, our study shows the potential value of inclusion of perfusion parameters, including relative change in plasma volume ( $\Delta_{32}V_p$ ) and leakage ( $\Delta_{32}\lambda^{tr}$ ) along with conventional contrast volume as biologically meaningful early surrogate endpoints and as early indicators of patient survival after NSC-mediated therapy in patients with recurrent high-grade gliomas. A decrease in  $\Delta_{32}V_p$  and  $\Delta_{32}\lambda^{tr}$  may be an early indicator of improved patient survival, while the contrast-enhanced MRI-based size criteria may not be sufficient in this setting. Future studies are required to investigate the surgical and dose-dependent effects of NSCs on perfusion kinetics and ultimately on treatment response and overall survival. Additional confirmatory studies are warranted.

## Disclosure

The content is solely the responsibility of the authors and does not necessarily represent the official views of the National Institutes of Health.

## Conflicts of Interest

Karen S. Aboody and Alexander J. Annala are officers and board members of TheraBiologics, Inc. No potential conflicts of interest were disclosed by the other authors.

## Acknowledgments

The research reported in this publication was supported by the National Cancer Institute of the National Institutes of Health under Award nos. P30CA033572 and R21CA137639.

## Supplementary Materials

Included in the supplementary materials are the MRI scanning protocol and quantification of perfusion parameters. (*Supplementary Materials*)

## References

- [1] D. R. Johnson and B. P. O'Neill, "Glioblastoma survival in the United States before and during the temozolomide era," *Journal of Neuro-Oncology*, vol. 107, no. 2, pp. 359–364, 2012.



- [2] R. Mangla, G. Singh, D. Ziegelitz et al., "Changes in relative cerebral blood volume 1 month after radiation-temozolomide therapy can help predict overall survival in patients with glioblastoma," *Radiology*, vol. 256, no. 2, pp. 575–584, 2010.
- [3] A. K. Bag, P. C. Cezayirli, J. J. Davenport et al., "Survival analysis in patients with newly diagnosed primary glioblastoma multiforme using pre- and post-treatment peritumoral perfusion imaging parameters," *Journal of Neuro-Oncology*, vol. 120, no. 2, pp. 361–370, 2014.
- [4] A. Hilario, J. M. Sepulveda, A. Hernandez-Lain et al., "Leakage decrease detected by dynamic susceptibility-weighted contrast-enhanced perfusion MRI predicts survival in recurrent glioblastoma treated with bevacizumab," *Clinical and Translational Oncology*, vol. 19, no. 1, pp. 51–57, 2017.
- [5] R. Awasthi, R. K. S. Rathore, P. Soni et al., "Discriminant analysis to classify glioma grading using dynamic contrast-enhanced MRI and immunohistochemical markers," *Neuroradiology*, vol. 54, no. 3, pp. 205–213, 2012.
- [6] K. K. Jain, P. Sahoo, R. Tyagi et al., "Prospective glioma grading using single-dose dynamic contrast-enhanced perfusion MRI," *Clinical Radiology*, vol. 70, no. 10, pp. 1128–1135, 2015.
- [7] P. Sahoo, R. K. S. Rathore, R. Awasthi et al., "Subcompartmentalization of extracellular extravascular space (EES) into permeability and leaky space with local arterial input function (AIF) results in improved discrimination between high- and low-grade glioma using dynamic contrast-enhanced (DCE) MRI," *Journal of Magnetic Resonance Imaging*, vol. 38, no. 3, pp. 677–688, 2013.
- [8] K. S. Aboody, A. Brown, N. G. Rainov et al., "Neural stem cells display extensive tropism for pathology in adult brain: evidence from intracranial gliomas," *Proceedings of the National Academy of Sciences of the United States of America*, vol. 97, no. 23, pp. 12846–12851, 2000.
- [9] K. S. Aboody, J. Najbauer, M. Z. Metz et al., "Neural stem cell-mediated enzyme/prodrug therapy for glioma: preclinical studies," *Science Translational Medicine*, vol. 5, no. 184, article 184ra59, 2013.
- [10] J. Portnow, T. W. Synold, B. Badie et al., "Neural stem cell-based anti-cancer gene therapy: a first-in-human study in recurrent high grade glioma patients," *Clinical Cancer Research*, vol. 23, no. 12, pp. 2951–2960, 2016.
- [11] I. M. Germano and E. Binello, "Stem cells and gliomas: past, present, and future," *Journal of Neuro-Oncology*, vol. 119, no. 3, pp. 547–555, 2014.
- [12] J. R. Bagó, A. Alfonso-Pecchio, O. Okolie et al., "Therapeutically engineered induced neural stem cells are tumour-homing and inhibit progression of glioblastoma," *Nature Communications*, vol. 7, article 10593, 2016.
- [13] G. Liberman, Y. Louzoun, and D. Ben Bashat, "T<sub>1</sub> mapping using variable flip angle SPGR data with flip angle correction," *Journal of Magnetic Resonance Imaging*, vol. 40, no. 1, pp. 171–180, 2014.
- [14] M. Jenkinson, P. Bannister, M. Brady, and S. Smith, "Improved optimization for the robust and accurate linear registration and motion correction of brain images," *NeuroImage*, vol. 17, no. 2, pp. 825–841, 2002.
- [15] M. Jenkinson and S. Smith, "A global optimisation method for robust affine registration of brain images," *Medical Image Analysis*, vol. 5, no. 2, pp. 143–156, 2001.
- [16] S. Ulmer, T. A. Braga, F. G. Barker, M. H. Lev, R. G. Gonzalez, and J. W. Henson, "Clinical and radiographic features of peritumoral infarction following resection of glioblastoma," *Neurology*, vol. 67, no. 9, pp. 1668–1670, 2006.
- [17] K. M. Schmainda, "Diffusion-weighted MRI as a biomarker for treatment response in glioma," *CNS Oncology*, vol. 1, no. 2, pp. 169–180, 2012.
- [18] V. Hatzoglou, T. J. Yang, A. Omuro et al., "A prospective trial of dynamic contrast-enhanced MRI perfusion and fluorine-18 FDG PET-CT in differentiating brain tumor progression from radiation injury after cranial irradiation," *Neuro-Oncology*, vol. 18, no. 6, pp. 873–880, 2016.
- [19] M. Haris, N. Husain, A. Singh et al., "Dynamic contrast-enhanced derived cerebral blood volume correlates better with leak correction than with no correction for vascular endothelial growth factor, microvascular density, and grading of astrocytoma," *Journal of Computer Assisted Tomography*, vol. 32, no. 6, pp. 955–965, 2008.
- [20] J. L. Boxerman, K. M. Schmainda, and R. M. Weisskoff, "Relative cerebral blood volume maps corrected for contrast agent extravasation significantly correlate with glioma tumor grade, whereas uncorrected maps do not," *American Journal of Neuroradiology*, vol. 27, no. 4, pp. 859–867, 2006.
- [21] F. Calamante, D. L. Thomas, G. S. Pell, J. Wiersma, and R. Turner, "Measuring cerebral blood flow using magnetic resonance imaging techniques," *Journal of Cerebral Blood Flow & Metabolism*, vol. 19, no. 7, pp. 701–735, 1999.
- [22] R. Demicheli, M. W. Retsky, W. J. M. Hrushesky, M. Baum, and I. D. Gukas, "The effects of surgery on tumor growth: a century of investigations," *Annals of Oncology*, vol. 19, no. 11, pp. 1821–1828, 2008.
- [23] F. Chen and Y.-C. Ni, "Magnetic resonance diffusion-perfusion mismatch in acute ischemic stroke: an update," *World Journal of Radiology*, vol. 4, no. 3, pp. 63–74, 2012.