

ORIGINAL INVESTIGATION

Open Access

Influence of a family history of type 2 diabetes, demographic and clinical data on carotid intima-media thickness in patients with type 1 diabetes: a cross-sectional study

Carlos Roberto Moraes de Andrade Junior^{1,7*}, Eliete Leão Clemente Silva², Maria de Fátima Bevilaqua da Matta³, Marcia Bueno Castier⁴, Maria Luiza Garcia Rosa⁵ and Marília de Brito Gomes⁶

Abstract

Background: Intima-media thickness (IMT) of the common carotid artery is a surrogate end point of cardiovascular disease (CVD). Identifying the factors associated with a higher IMT may contribute to the identification of subjects with higher CVD risk. Our objective was to compare the common carotid IMT of type 1 diabetes patients to healthy control subjects. The secondary objective was to determine factors associated with a higher carotid IMT.

Methods: We conducted a cross-sectional study between March 2009 and October 2013, comprising 127 type 1 diabetes patients and 125 control subjects matched by age, gender and body mass index (BMI). Carotid IMT was measured using semi-automated edge detection software.

Results: Type 1 diabetes patients had a higher median IMT compared with control subjects (0.538; IQR: 0.500-0.607 vs 0.513 mm; IQR: 0.481-0.557, respectively $p = 0.001$). Women with type 1 diabetes had a higher median IMT difference compared to the control group (0.537; IQR: 0.495-0.596 vs 0.502 mm; IQR: 0.472-0.543, respectively $p = 0.003$) than did men with type 1 diabetes (0.547; IQR: 0.504-0.613 vs 0.528 mm; IQR: 0.492-0.575, respectively $p = 0.2$). Age and diabetes duration had an additive effect on the IMT of type 1 diabetes patients. Multivariate gamma regression model analysis showed that in type 1 diabetes patients, the IMT was associated with age (Exp (β) = 1.006, $p < 0.001$), duration of diabetes (Exp (β) = 1.004, $p = 0.001$), BMI (Exp (β) = 1.005, $p = 0.021$), family history of type 2 diabetes (Exp (β) = 1.044, $p = 0.033$), total cholesterol (Exp (β) = 0.999, $p = 0.001$) and creatinine clearance (Exp (β) = 1.000, $p = 0.043$).

Conclusions: Patients with type 1 diabetes have increased IMT, a marker of subclinical atherosclerosis. The CVD risk may be similar between men and women with type 1 diabetes, suggesting a loss of gender protection. Also, CVD risk may be higher in those with a family history of type 2 diabetes. Prospective studies are needed to confirm the predictive value of these findings and the causal effect between IMT and CVD in patients with type 1 diabetes.

Keywords: Type 1 diabetes, Carotid IMT, CVD risk, Women with type 1 diabetes, Family history of type 2 diabetes

* Correspondence: carlosjr.andrade@gmail.com

¹Endocrinology Department at University Hospital of Fluminense Federal University, Rio de Janeiro, Brazil, and at Diabetes Unit, State University Hospital of Rio de Janeiro, Rio de Janeiro, Brazil

⁷Rua Ignez Peixoto 565 casa 6, Itaipú, Niterói, Rio de Janeiro, Brazil

Full list of author information is available at the end of the article

Background

There is a worldwide increase in type 1 diabetes incidence [1,2]. The disease can evolve to chronic complications, resulting in higher morbidity and mortality and consequently higher costs [1-3]. Furthermore, there has been an increase in the prevalence of overweight and obese patients in the type 1 diabetes population all over the world, including Brazil [4,5].

The cardiovascular disease (CVD) risk in type 1 diabetes is approximately 10 times higher than that in the general population, even in the absence of classical risk factors and adequate metabolic control [6-15]. Type 1 diabetes patients are continuously exposed to a hyperglycemic environment and other CVD risk factors, such as insulin dosage and the presence of chronic complications [16]. All of these risk factors are present at a very young age, resulting in progressive endothelial dysfunction that results in the atherosclerosis process [12,14,15]. One study showed that the soluble form of the membrane glycoprotein CD146 (sCD146) derived from endothelium cells is increased in individuals with cardiovascular and inflammatory disease and is associated with endothelial dysfunction [17]. Even in type 1 diabetes patients without chronic complications there is a mild chronic inflammatory state, which can be observed as an elevation of acute phase proteins (such as C-reactive protein (CRP)) that may also contribute to atherosclerosis [18]. Furthermore, some other unknown CVD risk factors might be present as there is still a residual CVD risk even in patients with excellent metabolic control [16].

More accurate methods for detection of sub-clinical atherosclerosis would be useful for identifying patients with type 1 diabetes with high CVD risk. The complex involving the intima and media layer thickness (IMT) of the common carotid artery measured by ultrasound is related to subclinical atherosclerosis process and higher CVD risk in type 1 diabetes patients [7,19-21]. Furthermore, it has been suggested that there is a linear correlation between the increase in total and cardiovascular death and the increase in IMT [22-25]. This measurement is a simple and non-invasive procedure [22,26,27].

Intensive glucose control is able to postpone the IMT increase, although it does not prevent it [6,12]. The DCCT/EDIC study showed that though both the original intensive and conventional treatment groups had the same glycated hemoglobin (HbA1c) during the 12 years of the EDIC study, the original intensive treatment group still had a thinner IMT [28]. Many factors may influence the IMT and, in fact, there may be some unrecognized factors associated with it [12,13,24,29-33].

The primary objective of this study was to compare the carotid IMT between type 1 diabetes patients and healthy control. The secondary objective was to determine the

clinical and laboratorial variables that are associated with a thicker carotid IMT in these populations.

Methods

This was a cross-sectional, single center study conducted between March 2009 and October 2013 in consecutive patients with type 1 diabetes who regularly attended a tertiary care diabetes outpatient unit at Pedro Ernesto University Hospital. These patients were matched to healthy control subjects by age, gender and body mass index (BMI). Age was matched by age group with a range of five years because of our difficulty in finding older healthy control subjects. Control subjects were recruited among the patients' spouses and relatives, university students and hospital employees. The study was approved by the local research ethics committee of Pedro Ernesto University Hospital, Rio de Janeiro State University, Rio de Janeiro, Brazil. Participants were subjected to clinical and laboratory evaluation.

Initially, written informed consent was obtained from all participants. Subjects were submitted to an interview for demographic and clinical information and underwent physical examination. On the morning of the interview, subjects brought in the first 10- hour overnight urine sample, and fasting and post-prandial blood samples were collected. Subjects were then conducted to the Echo laboratory acclimatized room to perform the IMT measurement.

The inclusion criteria included individuals older than 10 years, patients with type 1 diabetes for more than five years, patients who continuously used insulin since diagnosis and healthy control subjects. The exclusion criteria included type 1 diabetes patients and healthy control subjects who were unable to tolerate dorsal decubency for long periods, a previous history of invasive procedure in the carotid artery, chronic usage of glucocorticoids, asthma or chronic obstructive pulmonary disease, kidney disease, liver failure, thyroid disease and control subjects with previous histories of high cholesterol levels or using cholesterol-lowering drugs, hypertension or using pressure-lowering drugs and cardiovascular disease.

We followed the American Diabetes Association (ADA) statement for the definition of childhood and adolescence. [34]. BMI was calculated by dividing the weight in kilograms by the squared height in meters. Overweight was defined as a BMI ≥ 25 for adults or $\geq 85^{\text{th}}$ percentile for children, and obesity was defined as a BMI ≥ 30 for adults or $\geq 95^{\text{th}}$ percentile for children and adolescents [35].

Blood pressure (BP) was calculated using the mean of the three measurements. Adult subjects were classified as having hypertension when the mean was higher than 140 mmHg for systolic blood pressure (SBP) and/or 90 mmHg for diastolic blood pressure (DBP) [36,37].

Children and adolescents were considered to have hypertension if SBP or DBP was $\geq 95^{\text{th}}$ percentile for age, sex and height [35].

Glucose control was assessed by fasting glucose (FG) and HbA1c (high performance liquid chromatography (HPLC), Bio-Rad Kit, hemoglobin testing system equipment from Bio-Rad Lab., Irvine, USA. Reference values = 4.0 to 6.0%).

Uric acid, serum creatinine, triglycerides, High density cholesterol (HDL) and total cholesterol levels were measured by enzymatic techniques (Cobas Mira; Roche, Bohemia, NY, USA). Low density cholesterol (LDL) was calculated using the Friedewald equation, except when the triglyceride levels were higher than 400 mg/dL [38]. Creatinine clearance was calculated using the Cockcroft-Gault equation. Urinary albumin excretion rate (UAER) was estimated by solid-phase competitive chemiluminescent enzyme immunoassay (sensitivity of 0.5 mcg/mL; Immulite 1000 Systems; DPC Medlab, Los Angeles, CA, USA) with intra- and inter-assay variation coefficients of 4.4 and 6.1%, respectively. Serum CRP was measured using a highly sensitive immunonephelometry assay (Behring Nephelometer; Behring, Marburg, Germany) with a detection limit of 0.01 mg/dl and intra- and inter-assay variation coefficients of 1 and 5.3%, respectively.

The IMT image was digitally recorded using a commercially available system (Envisor CHD, Philips, Bothell, WA, USA) equipped with a linear L12-13Hz transducer. The IMT was measured using the semi-automated edge-detection software package Q-LAB Advanced Ultrasound Quantification Software version 7.1, Philips. This software measured the IMT in millimeters with a three decimal places precision. Measurements were obtained according the American Society of Echocardiography recommendations [26].

A single examiner performed all IMT images in a quiet, dark, acclimatized room, after the patient rested for at least five minutes. A bilateral transversal scanning from the common carotid artery and its visible ramifications was performed to look for apparent plaques. The distal one centimeter length of the common carotid IMT image was stored in a digital media after positioning the transducer longitudinal to the carotid vessel. The images were taken in three different angles, posterior, lateral and anterior, for each right and left common carotid artery. The IMT was measured off-line using the semi-automated edge-detection software by two independent skilled examiners who were blinded for the condition of the subject analyzed.

Statistical analysis was performed using the SPSS software version 21 (IBM Corp., USA). To detect a 0.021 mm difference in the IMT between type 1 diabetes and control subjects with a statistical power of

80%, we would need 120 individuals in each group. To determine the agreement between both examiners, we calculated the intra-class coefficient (95% CI) and performed the Bland-Altman box-plot. Data are presented in median and interquartile range (IQR). The non-parametric data were analyzed using the Mann-Whitney *U* test or the unpaired *t* test when applicable. The bivariate analysis was performed using gamma regression model between the IMT and the variables analyzed. Those variables with a *p* value < 0.1 in the bivariate model were included in the multivariate gamma regression model, which was performed in backwards. To avoid multicollinearity, when two or more variables were a measure of the same risk factor, we chose the most significant one. We performed the multivariate gamma model analysis in backwards because there were a lot of variables to be analyzed.

Results

Overview of demographic and laboratorial data of the studied population

Characteristics of the study population are shown in Table 1. In patients with type 1 diabetes, age ranged from 14 to 63 years old and in the control group, age ranged from 14 to 57 years old. There was only one patient with type 1 diabetes who was older than 57 years. Compared to the control group, patients with type 1 diabetes had lower alcohol consumption (9.6 vs 10.4%, $p < 0.001$), higher median FG (117 mg/dL; IQR: 78–260 vs 78 mg/dL; IQR: 70.5–85.5, $p < 0.001$), higher median HbA1c (8.9%; IQR: 7.8–10.5 vs 5.4%; IQR: 5.2–5.8, $p < 0.001$), lower median creatinine (0.86 mg/dL; IQR: 0.7–1.0 vs 0.93 mg/dL; IQR: 0.77–1.09, $p = 0.007$), lower median triglycerides (74.5 mg/dL; IQR: 57–108.8 vs 91 mg/dL; IQR: 68–129.5, $p = 0.05$), lower median uric acid (3.7 mg/dL; IQR: 2.9–4.5 vs 5.1 mg/dL; IQR: 4.0–6.3, $p < 0.001$) and higher median UAER (8.56 mcg/min; IQR: 4.31–25.33 vs 3.39 mcg/min; IQR: 2.11–5.99, $p < 0.001$).

Among patients with type 1 diabetes, 74.8% had diabetes duration ≥ 10 years, and 32.3% had a diabetes duration ≥ 20 years. There were 45.9% with HbA1c $> 9\%$ and 11.9% with HbA1c $\leq 7\%$. Additionally, in patients with the type 1 diabetes, there were 15% of subjects with a BP $\geq 140 \times 90$ mmHg or over the 95% percentile for children and adolescents, 9.6% with a current history of smoking, 33.1% with BMI of ≥ 25 kg/m² or over the 85% percentile for children and adolescents, 7.9% with a HDL < 40 mg/dL for men or < 50 mg/dL for women, 27.9% with a LDL > 100 mg/dL, 33.9% with a CRP > 0.3 and 21.3% with an UAER > 30 mcg/min.

Among the control group, 10.4% subjects had current history of smoking, 47% with a BMI of ≥ 25 or over the 85% percentile for children and adolescents, 12% with a

Table 1 Clinical and laboratory data in patients with type 1 diabetes and control subjects

	Type 1 diabetes	Control	P
Demographic data			
N (% male)	127 (45.7)	125 (40.8)	0.4
Age (years)	32 (23–42)	29 (22–39.5)	0.08
Age at diagnosis (years)	15 (10–22)		
Duration of diabetes (years)	14 (10–21.8)		
Past history of hypertension (%)	24.8%		
Current smoke (%)	9.6	10.4	0.8
Current alcohol consumption (%)	30.4	58.3	<0.001
Current exercise practice (%)	42.4	50.6	0.3
Family history			
Family history of type 2 diabetes (%)	29.8	25.2	0.5
Family history of type 1 diabetes (%)	19.2	18.3	0.9
Family history of hypertension (%)	6.4	52.2	0.07
Family history of CVD (%)	2.1	1.3	0.1
Anthropometric data and insulin dose			
BMI (kg/m ²)	23.6 (21.6–26.2)	24.3 (21.6–28)	0.2
SBP (mmHg)	120 (110–125.8)	113 (105–120)	0.06
DBP (mmHg)	70 (70–80)	70 (68.5–80)	0.2
Waist (cm)	81 (74–88)	81 (73.1–89.9)	0.9
WHR	0.86 (0.8–0.9)	0.85 (0.79–0.91)	0.5
Insulin/weight (U/Kg)	0.81 (0.59–1.07)		
Laboratory data			
Fasting glucose (mg/dL)	117 (78–260)	78 (70.5–85.5)	<0.001
HbA1c (%)	8.9 (7.8–10.5)	5.4 (5.2–5.8)	<0.001
Creatinine (mg/dL)	0.86 (0.7–1.0)	0.93 (0.77–1.09)	0.007
Creatinine clearance (mL/min)	112.7 (88.5–131.3)	103.5 (87.4–119.4)	0.1
Uric acid (mg/dL)	3.7 (2.9–4.5)	5.1 (4.0–6.3)	<0.001
Total cholesterol (mg/dL)	163 (148–189)	167.5 (146–197.8)	0.3
Triglycerides (mg/dL)	74.5 (57–108.8)	91 (68–129.5)	0.05
HDL (mg/dL)	55.7 (44.7–67.4)	54.9 (44.1–65.8)	0.3
LDL (mg/dL)	90.1 (74.9–105.3)	96 (73.3–115.5)	0.07
CRP (mg/dL)	0.144 (0.066–0.340)	0.120 (0.030–0.320)	0.2
UAER (mcg/min)	8.56 (4.31–25.33)	3.39 (2.11–5.99)	<0.001
IMT data			
IMT on the right (mm)	0.533 (0.497–0.600)	0.513 (0.478–0.555)	0.002
IMT on the left (mm)	0.530 (0.490–0.610)	0.510 (0.475–0.562)	0.005
Total IMT (mm)	0.538 (0.500–0.607)	0.513 (0.481–0.557)	0.001

N = Number, CVD = Cardiovascular disease, BMI = Body mass index, SBP = Systolic blood pressure, DBP = Diastolic blood pressure, WHR = Waist to hip ratio, U = International units, HbA1c = Glycated hemoglobin, HDL = High density lipoprotein, LDL = Low density lipoprotein, CRP = C reactive protein, UAER = Urinary Albumin excretion rate, IMT = intima media thickness. Data are presented in median and interquartile range (IQR).

HDL < 40 mg/dL for men or < 50 mg/dL for women, 41% with a LDL > 100 mg/dL and 33.3% with CRP > 0.3. There were no control subjects with an UAER ≥ 30 mcg/min or BP ≥ 140×90 mmHg or over the 95% percentile for children and adolescents.

Overview of IMT agreement between the two examiners and difference between right and left IMT

There was a high agreement between both independent analyzers using the intra-class coefficient (0.963 95% CI = 0.950–0.973, p < 0.001) (Figure 1).

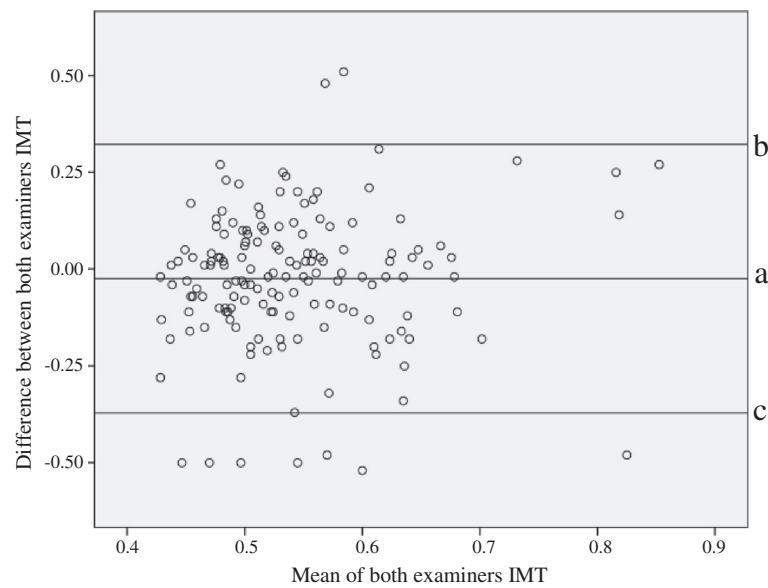


Figure 1 Bland-Altman agreement boxplot between examiners. Lines: a = mean difference of IMT, b = +1.96SD mean difference of IMT, c = -1.96SD mean difference of IMT. IMT = intima media thickness.

There was no difference between the right and left mean IMT in any group, as shown in Table 2. Therefore the total mean IMT was employed for statistical analysis.

Overview of IMT data of the whole population

Type 1 diabetes patients had higher median right, left and total carotid IMT compared with the control subjects (0.533 mm; IQR: 0.497-0.600 vs 0.513 mm; IQR: 0.478-0.555, $p = 0.002$, 0.530 mm; IQR: 0.490-0.610 vs 0.510 mm; IQR: 0.475-0.562, $p < 0.005$ and 0.538 mm; IQR: 0.500-0.607 vs 0.513 mm; IQR: 0.481-0.557, $p = 0.001$, respectively). The data are shown in Table 1.

The difference in median IMT between patients with type 1 diabetes and the control group was higher in women (0.537 mm; IQR: 0.495-0.596 vs 0.502 mm; IQR: 0.472-0.543, respectively $p = 0.003$) than in men (0.547 mm; IQR: 0.504-0.613 vs 0.528 mm; IQR: 0.492-0.575, respectively $p = 0.2$). The influence of age on carotid IMT in type 1 diabetes patients and control subjects is shown in Figure 2. The variables associated with IMT in the bivariate gamma regression model are listed in Table 3.

Multivariate gamma regression analysis in patients with type 1 diabetes showed that having a family history of type 2 diabetes increased the IMT by 4.4%. For each year of age, there was a 0.6% increase in IMT, for each year of

diabetes duration, there was a 0.4% increase in IMT and for each one point increase in BMI there was a 0.5% increase in IMT. For each increase of 1 mg/dL in total cholesterol, there was a 0.1% reduction in IMT, and for each 1 mg/min increase in creatinine clearance, there was an almost 0.0%, but statistically significant increase in IMT, as shown in Table 4 and Figure 2.

Multivariate gamma regression model analysis in the control group IMT showed that the male gender was associated with a 5.4% increase in IMT, having a family history of type 2 diabetes was associated with a 4.9% increase in IMT. For each year of age, there was a 0.4% increase in IMT and for each 1 point increase in BMI, there was a 0.4% increase in IMT. Data are shown in Table 4 and Figures 2 and 3.

Comparing patients with type 1 diabetes with or without family history of type 2 diabetes there was no difference in median BMI (24.1 kg/m²; IQR: 22.5-27.45 vs 23.5 kg/m²; IQR: 21-25.3, respectively, $p = 0.08$) or in median LDL (93.5 mg/dL; IQR: 80.8-113.4 vs 84.6 mg/dL; IQR: 71.9-98, respectively, $p = 0.07$). Comparing control subjects with or without family history of type 2 diabetes there was no difference in BMI (25.6 kg/m²; IQR: 22.7-28.1 vs 24.3 kg/m²; IQR: 21.5-28.2, respectively, $p = 0.5$) or in median LDL (100.9 mg/dL; IQR: 88.3-129.8 vs 94 mg/dL; IQR: 69.7-108.8, respectively, $p = 0.1$).

Table 2 Comparison between right and left IMT measurements in patients with type 1 diabetes and control subjects

	Right IMT (mm)	Left IMT (mm)	Difference (mm)	p
Type 1 diabetes	0.533 (0.497-0.600)	0.530 (0.490-0.610)	0.003	0.7
Control	0.513 (0.478-0.555)	0.510 (0.475-0.562)	0.003	0.9

IMT = Intima-Media Thickness. Data are presented in median and interquartile range (IQR).

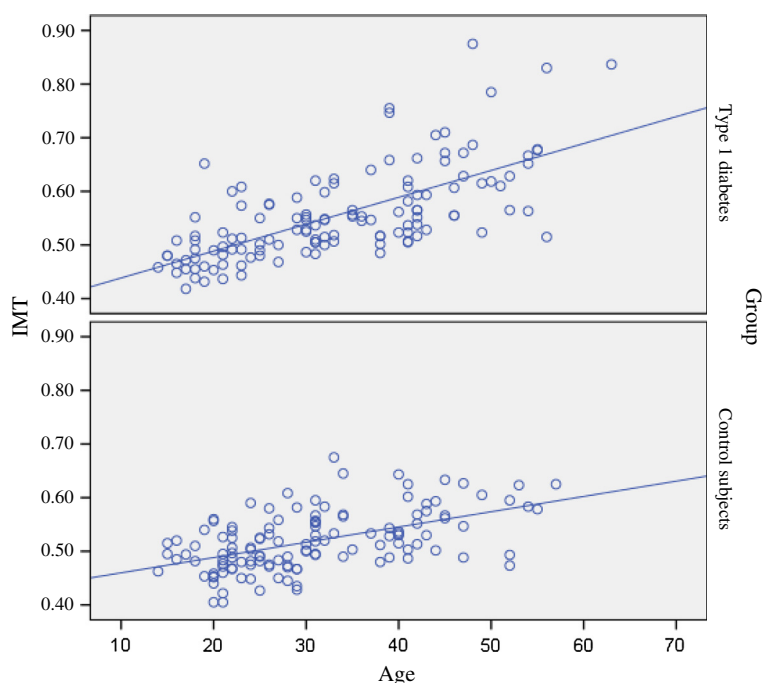


Figure 2 Association of IMT with age in control subjects and patients with type 1 diabetes. IMT = intima media thickness.

Discussion

Our study showed that in our sample, patients with type 1 diabetes had a higher IMT compared with the control subjects. Despite having type 1 diabetes for a relatively long time, our patients with type 1 diabetes had a lower IMT than expected, similar to the findings of another study [13]. In our study, in patients with type 1 diabetes, having a family history of type 2 diabetes was associated with a 4.4% increase in carotid IMT and unlike the control group, women with type 1 diabetes had a IMT as high as men.

In the control group, the female gender was associated with a thinner IMT, but this association was not found in our patients with type 1 diabetes. A study that evaluated the distribution of IMT according to age in the general population showed that men had a higher IMT compared with women [39]. These findings could reflect a loss of gender protection for CVD risk in women with type 1 diabetes as suggested by The Diabetes UK Cohort Study and another study [40,41]. In fact, in patients with type 1 diabetes, women may have a higher increase in CVD risk compared with men [8]. In a cohort of 23,000 patients with type 1 diabetes the CVD risk in women with diabetes was not only greater than that for women without diabetes but was also considerably higher than that for men without diabetes [40]. Another study demonstrated that women had a higher arterial stiffness measured at the carotid and radial arteries compared to men [42]. The EURODIAB PCS found that in patients

with type 1 diabetes, the CVD risk may be increased approximately 9–29 times in women and 4–9 times in men compared to individuals without diabetes [43].

The higher IMT found in our patients with type 1 diabetes was not associated with current parameters of glycemic control. This findings are similar to the findings in the DCCT/EDIC study, in which carotid IMT was only associated with the HbA1c six years before the IMT measurement [28]. This delayed effect suggests a glycemic memory that favors an early and intensive metabolic control [44].

Among all of the factors associated with IMT, age may be a major one and in our study it was associated with a higher IMT in both groups, which is in accordance with another study [45]. In fact, age is the most important characteristic in IMT normality tables [26]. Furthermore, our findings suggest that there was a higher impact of age in the IMT of patients with type 1 diabetes than in the IMT of the control subjects. This higher impact may be partly due to the duration of the disease. It is important to note that in one study, it was found that CVD was the main cause of death in patients with type 1 diabetes, primarily in those who had had diabetes for more than 20 years [46].

A family history of type 2 diabetes was an important factor that influenced the IMT in both groups. The DCCT/EDIC study found that patients with type 1 diabetes and family history of type 2 diabetes in the intensive treatment group had a greater increase in the carotid

Table 3 Bivariate gamma regression model between IMT and clinical and laboratory data

	Type 1 Diabetes		Control	
	Exp (β) (95% CI)	p	Exp (β) (95% CI)	p
Demographic data				
Age	1.009 (1.007-1.011)	<0.001	1.005 (1.004-1.007)	<0.001
Gender (men vs women)	1.036 (0.981-1.093)	0.202	1.048 (1.010-1.087)	0.013
Duration of diabetes	1.010 (1.008-1.012)	<0.001		
Diagnosis of hypertension	1.133 (1.076-1.193)	<0.001		
Current smoke	1.040 (0.998-1.096)	0.134	1.029 (0.969-1.093)	0.347
Current alcohol consumption	0.975 (0.925-1.027)	0.335	1.001 (0.963-1.040)	0.979
Current exercise practice	0.991 (0.937-1.048)	0.757	0.993 (0.956-1.032)	0.731
Family history				
Family history of type 2 diabetes	1.058 (1.002-1.118)	0.042	1.073 (1.027-1.120)	0.001
Family history of type 1 diabetes	1.038 (0.271 to 1.109)	0.273	1.010 (0.961-1.063)	0.685
Family history of hypertension	1.112 (1.054-1.173)	<0.001	1.020 (0.981-1.060)	0.322
Family history of CVD	1.108 (1.036-1.185)	0.003	1.021 (0.967-1.077)	0.458
Anthropometric data				
SBP	1.004 (1.002-1.006)	<0.001	1.002 (1.001-1.004)	0.008
DBP	1.003 (1.001-1.005)	0.001	1.003 (1.001-1.005)	0.008
BMI	1.012 (1.005-1.018)	<0.001	1.007 (1.003-1.012)	0.001
Waist	1.004 (1.002-1.007)	0.001	1.004 (1.002-1.005)	<0.001
Hip	1.002 (0.999 to 1.005)	0.161	1.003 (1.001-1.005)	<0.001
WHR	1.811 (1.220-2.691)	0.003	1.465 (1.121-1.915)	0.005
Laboratory data				
Fasting glucoses	1.000 (1.000-1.000)	0.622	1.001 (1.000-1.002)	0.185
Glycated hemoglobin	0.987 (0.974-0.999)	0.041	1.054 (1.002-1.110)	0.043
Creatinine	1.026 (1.017-1.034)	<0.001	1.045 (0.960-1.136)	0.311
Creatinine clearance (mg/min)	0.999 (0.998-1.000)	0.001	1.000 (1.000-1.001)	0.410
Total cholesterol	0.999 (0.998-1.000)	0.050	1.001 (1.000-1.001)	0.005
Triglycerides	1.000 (1.000-1.000)	0.809	1.000 (1.000-1.001)	0.006
LDL	1.000 (0.999- 1.001)	0.626	1.001 (1.000-1.001)	0.009
HDL	0.998 (0.997-1.000)	0.018	1.000(0.999-1.001)	0.682
Uric acid	0.993 (0.974-1.012)	0.460	1.008 (0.995-1.021)	0.219
CRP	0.974 (0.879-1.078)	0.607	1.024 (0.975-1.075)	0.343
UAER	1.000 (1.000-1.000)	0.135	1.000 (0.998-1.002)	0.931

Exp (β) = Exponential beta coefficient; CI = Confidence interval; CVD = Cardiovascular disease; SBP = Systolic blood pressure; DBP = Diastolic blood pressure; BMI = Body mass index; WHR = Waist to hip ratio; LDL = Low density lipoprotein; HDL = High density lipoprotein; CRP = C reactive protein; UAER = Urinary albumin excretion rate.

IMT in both EDIC year 1 and 6 [47]. It is important to emphasize that in the general population, a family history of type 2 diabetes was a major determinant of endothelial dysfunction and this was able to predict the progression of carotid IMT [48,49]. Unfortunately, such an association was not evaluated in our study. However, one author failed to find any association between type 1 diabetes and endothelial dysfunction [50]. In patients with Type 1 diabetes, a family history of type 2 diabetes is associated with a metabolic profile of

insulin resistance, increased carotid IMT and increased CVD risk [51,52]. One study showed that in non-obese patients with type 1 diabetes the insulin resistance was associated with a higher IMT [53]. In our study the association of IMT with family history of type 2 diabetes may reflect the insulin resistance. Another study showed an increased prevalence of a family history of type 2 diabetes in patients with type 1 diabetes and a history of coronary artery disease compared with patients with type 1 diabetes without a history of coronary artery

Table 4 Multiple gamma regression model between IMT and clinical and laboratory data

	Type 1 Diabetes		Control	
	Exp (β) (95% CI)	p	Exp (β) (95% CI)	p
Age	1.006 (1.004-1.008)	<0.001	1.004 (1.003-1.006)	<0.001
Gender (Male vs Female)	1.029 (0.993-1.066)	0.1	1.054 (1.020-1.088)	0.001
Duration of diabetes	1.004 (1.002-1.007)	0.001		
BMI	1.005 (1.001-1.010)	0.021	1.004 (1.000-1.008)	0.035
Family history of type 2 diabetes	1.044 (1.003-1.085)	0.033	0.049 (1.012-1.088)	0.009
Creatinine clearance	1.000 (0.999-1.000)	0.0043		
Total cholesterol	0.999 (0.999-1.000)	0.001		

Exp (β) = Exponential beta coefficient, 95% CI = 95% Confidence interval, BMI = Body mass index.

disease [54]. Therefore, patients with type 1 diabetes and a family history of type 2 diabetes should be under an even more aggressive treatment in regards to not only glucose control but also other CVD risk factors such as blood pressure and lipid profile.

Another important CVD risk factor is the presence of renal dysfunction. The presence of renal dysfunction in type 1 diabetes patients is associated with a 10- fold increase in CVD risk compared with those patients with type 1 diabetes without renal dysfunction [55]. In our study, the association of IMT with creatinine clearance in patients with type 1 diabetes may reflect the association of CVD risk and some renal dysfunction.

The DCCT/EDIC study demonstrated that in patients with type 1 diabetes the excess weight gain was associated with higher carotid IMT, independently of treatment group [47]. In our study, the association of BMI with IMT in both patients with type 1 diabetes and in control group may reflect role of visceral adipose

tissue on endothelial dysfunction and CVD risk as recently demonstrated [56,57].

The positive association of IMT and total cholesterol in patients with type 1 diabetes was an unexpected finding.

Carotid IMT is an established surrogate end point for CVD risk in the general population and has a strong correlation with CVD risk factors [58]. However, there are no longitudinal studies in type 1 diabetes showing a causal relationship between a higher carotid IMT and cardiovascular events, as demonstrated in the DCCT/EDIC study [28]. In this study, after 12 years of follow up, only 75 patients experienced cardiovascular events, and the authors could not demonstrate a causal effect between the increase in carotid IMT and CVD events. Despite the high CVD mortality in patients with type 1 diabetes [40], there is no specific method for CVD screening and no method to stratify CVD risk in these patients. Additionally, there is difficulty in identifying

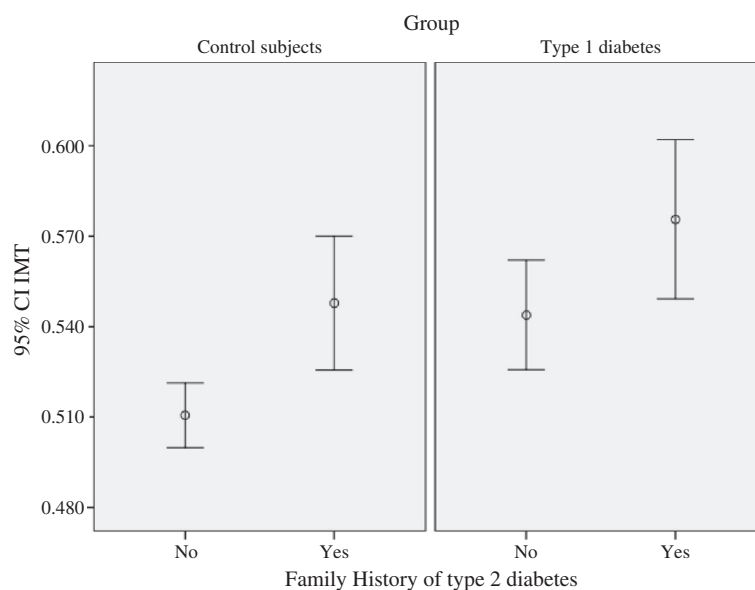


Figure 3 IMT and family history of type 2 diabetes in control subjects and patients with type 1 diabetes. CI = confidence interval, IMT = intima media thickness.

factors associated with impaired cardiac function and cardiac remodeling as suggested by the DCCT/EDIC study [59]. In this study, there was an association between the mean glycated hemoglobin over the entire follow-up period and parameters of cardiac function and structures evaluated by cardiac magnetic resonance. However, this study failed to find any difference between previously intensive versus conventionally treated patients. In a review of CVD in type 1 diabetes the authors state that in the past 40 years, there was a 70% reduction in CVD mortality in type 1 diabetes presumably because of the progress in CVD risk management. However, CVD mortality may increase approximately 50% for each 1% increase in HbA1c between the ages of 45 and 64 years [44]. The difficulty in identifying those patients with high CVD risk was illustrated by a recent case report of a 48-years-old woman with a long duration of type 1 diabetes but without evidence of microvascular complication, traditional CVD risk factors and a family history of diabetes. She had a rapidly progressive severe coronary atherosclerosis and experienced a myocardial infarction by the age of 42 [60].

The primary strength of our study resides in the fact that all IMT data were measured using a semi-automated edge-detection software and confirmed by a second independent echocardiographer. Both were blinded to the subject condition, and there was a high agreement between them. This high agreement convinces us that this is a reliable and reproducible procedure that can improve the detection of patients with type 1 diabetes and increased CVD risk. Some limitations must be addressed. We studied the patients with type 1 diabetes in a single center with only internal validation. Furthermore, considering that our study was a cross-sectional one, the inference of cause-effect was not possible.

Conclusion

Despite their young age, patients with type 1 diabetes have increased IMT, which is a marker of subclinical atherosclerosis. The CVD risk may be similar between men and women with type 1 diabetes, suggesting a loss of gender protection for CVD risk in this population. The CVD risk may even more increased in those patients with a family history of type 2 diabetes. Future prospective studies are needed to confirm the predictive value of these findings and the causal effect between the carotid IMT and CVD in patients with type 1 diabetes.

Abbreviations

ADA: American Diabetes Association; BMI: Body mass index; CRP: C-reactive protein; CVD: Cardiovascular disease; DBP: Diastolic blood pressure; FG: Fasting glucose; HbA1c: Glycated hemoglobin; HDL: High density cholesterol; IQR: Interquartile range; IMT: Intima-media thickness; LDL: Low density cholesterol; SBP: Systolic blood pressure; sCD146: Soluble form of the membrane glycoprotein CD146; UAER: Urinary albumin excretion rate.

Competing interests

The authors declare that they have no competing interests.

Authors' contributions

CRMA-J: participated in the elaboration of the objective, design of the study, acquisition of data, analysis and interpretation of data and writing the paper; ELCS: participated in recruitment of subjects, acquisition of data and collecting blood and urine samples; MdFbdM: participated in the processing and analysis of blood and urine samples. MBC: participated in the definition of how to perform the IMT measurement and in the measurement of IMT; MLGR: participated in the analysis and interpretation of data. MdBG: participated in the elaboration of the objective and design of the study, interpretation of data and writing the paper. All authors read and approved the final manuscript.

Authors' information

This study derived from Andrade-Junior, CRM PhD thesis. This study was funded by FAPERJ (Fundação de amparo à pesquisa do Estado do Rio de Janeiro) and CNPq (Conselho Nacional de Desenvolvimento Científico e Tecnológico).

Acknowledgements

This study was supported by FAPERJ (Fundação de amparo à pesquisa do Estado do Rio de Janeiro) and by CNPq (Conselho Nacional de Desenvolvimento Científico e Tecnológico). We also need to thank Elisangela Santos, Aline Tiene Kano and all medicine students who helped in recruitment of subjects and collecting data.

Author details

¹Endocrinology Department at University Hospital of Fluminense Federal University, Rio de Janeiro, Brazil, and at Diabetes Unit, State University Hospital of Rio de Janeiro, Rio de Janeiro, Brazil. ²Technical Nursing at Department of Internal Medicine, Diabetes Unit, State University Hospital of Rio de Janeiro, Rio de Janeiro, Brazil. ³Biologist at Department of Internal Medicine, Diabetes Unit, State University Hospital of Rio de Janeiro, Rio de Janeiro, Brazil. ⁴Department of Internal Medicine, Cardiology Unit, State University Hospital of Rio de Janeiro, Rio de Janeiro, Brazil. ⁵Epidemiology and Biomaths at University Hospital of Fluminense Federal University, Rio de Janeiro, Brazil. ⁶Department of Internal Medicine, Diabetes Unit, State University Hospital of Rio de Janeiro, Rio de Janeiro, Brazil. ⁷Rua Ignez Peixoto 565 casa 6, Itaipú, Niterói, Rio de Janeiro, Brazil.

Received: 26 February 2014 Accepted: 24 April 2014

Published: 3 May 2014

References

- Berhan Y, Waernbaum I, Lind T, Mollsten A, Dahlquist G: **Thirty years of prospective nationwide incidence of childhood type 1 diabetes: the accelerating increase by time tends to level off in Sweden.** *Diabetes* 2011, **60**:577–581.
- Onkamo P, Vaananen S, Karvonen M, Tuomilehto J: **Worldwide increase in incidence of Type I diabetes—the analysis of the data on published incidence trends.** *Diabetologia* 1999, **42**:1395–1403.
- Cobas RA, Ferraz MB, Matheus AS, Tannus LR, Negrato CA, de Antonio AL, Dib SA, Gomes MB: **The cost of type 1 diabetes: a nationwide multicentre study in Brazil.** *Bull World Health Organ* 2013, **91**:434–440.
- Conway B, Miller RG, Costacou T, Fried L, Kelsey S, Evans RW, Orchard TJ: **Temporal patterns in overweight and obesity in Type 1 diabetes.** *Diabet Med* 2010, **27**:398–404.
- Negrato CA, Dias JP, Teixeira MF, Dias A, Salgado MH, Lauris JR, Montenegro RM Jr, Gomes MB, Jovanovic L: **Temporal trends in incidence of Type 1 diabetes between 1986 and 2006 in Brazil.** *J Endocrinol Invest* 2010, **33**:373–377.
- Nathan DM, Lachin J, Cleary P, Orchard T, Brillon DJ, Backlund JY, O'Leary DH, Genuth S: **Intensive diabetes therapy and carotid intima-media thickness in type 1 diabetes mellitus.** *N Engl J Med* 2003, **348**:2294–2303.
- Holman RR, Paul SK, Bethel MA, Matthews DR, Neil HA: **10-year follow-up of intensive glucose control in type 2 diabetes.** *N Engl J Med* 2008, **359**:1577–1589.
- Soedamah-Muthu SS, Chaturvedi N, Toeller M, Ferriss B, Reboldi P, Michel G, Manes C, Fuller JHG: **Risk factors for coronary heart disease in type 1**

- diabetic patients in Europe: the EURODIAB Prospective Complications Study. *Diabetes Care* 2004, **27**:530–537.
9. Arcanjo CL, Piccirillo LJ, Machado IV, Andrade CR Jr, Clemente EL, Gomes MB: Lipid profile and anthropometrical evaluation in type 1 diabetes. *Arq Bras Endocrinol Metabol* 2005, **49**:951–958.
 10. Effect of intensive diabetes treatment on carotid artery wall thickness in the epidemiology of Diabetes interventions and complications. Epidemiology of Diabetes Interventions and Complications (EDIC) Research Group. *Diabetes* 1999, **48**:383–390.
 11. Nathan DM, Cleary PA, Backlund JY, Genuth SM, Lachin JM, Orchard TJ, Raskin P, Zinman B: Intensive diabetes treatment and cardiovascular disease in patients with type 1 diabetes. *N Engl J Med* 2005, **353**:2643–2653.
 12. Orchard TJ, Costacou T, Kretowski A, Nesto RW: Type 1 diabetes and coronary artery disease. *Diabetes Care* 2006, **29**:2528–2538.
 13. Larsen JR, Brekke M, Bergengen L, Sandvik L, Arnesen H, Hanssen KF, Dahl-Jorgensen K: Mean HbA1c over 18 years predicts carotid intima media thickness in women with type 1 diabetes. *Diabetologia* 2005, **48**:776–779.
 14. Jarvisalo MJ, Raitakari M, Toikka JO, Putto-Laurila A, Rontu R, Laine S, Lehtimäki T, Viikari J, Raitakari OT: Endothelial dysfunction and increased arterial intima-media thickness in children with type 1 diabetes. *Circulation* 2004, **109**:1750–1755.
 15. Dalla PR, Bechtold S, Bonfig W, Putzker S, Kozlik-Feldmann R, Netz H, Schwarz HP: Age of onset of type 1 diabetes in children and carotid intima medial thickness. *J Clin Endocrinol Metab* 2007, **92**:2053–2057.
 16. Bertoluci MC, Ce GV, da Silva AM, Punaes MK: Endothelial dysfunction in type 1 diabetes. *Arq Bras Endocrinol Metabol* 2008, **52**:416–426.
 17. Ciftci DS, Helvacı A, Adas M, Deniz OS: The relationship between early atherosclerosis and endothelial dysfunction in type 1 diabetic patients as evidenced by measurement of carotid intima-media thickness and soluble CD146 levels: a cross sectional study. *Cardiovasc Diabetol* 2013, **12**:153.
 18. Gomes MB, Piccirillo LJ, Nogueira VG, Matos HJ: Acute-phase proteins among patients with type 1 diabetes. *Diabetes Metab* 2003, **29**:405–411.
 19. Frost D, Beischer W: Progression of the carotid artery intima-media thickness in young patients with type 1 diabetes. *Diabetes Care* 2003, **26**:545.
 20. Temelkova-Kurktschiev TS, Koehler C, Leonhardt W, Schaper F, Henkel E, Siegert G, Hanefeld M: Increased intimal-medial thickness in newly detected type 2 diabetes: risk factors. *Diabetes Care* 1999, **22**:333–338.
 21. Bernard S, Serusclat A, Targe F, Charriere S, Roth O, Beaune J, Berthézène F, Moulin P: Incremental predictive value of carotid ultrasonography in the assessment of coronary risk in a cohort of asymptomatic type 2 diabetic subjects. *Diabetes Care* 2005, **28**:1158–1162.
 22. Simons PC, Algra A, Bots ML, Grobbee DE, Van der Graaf Y: Common carotid intima-media thickness and arterial stiffness: indicators of cardiovascular risk in high-risk patients. The SMART Study (Second Manifestations of ARterial disease). *Circulation* 1999, **100**:951–957.
 23. Chambless LE, Heiss G, Folsom AR, Rosamond W, Szklo M, Sharrett AR, Clegg LX: Association of coronary heart disease incidence with carotid arterial wall thickness and major risk factors: the Atherosclerosis Risk in Communities (ARIC) Study, 1987–1993. *Am J Epidemiol* 1997, **146**:483–494.
 24. Thakore AH, Guo CY, Larson MG, Corey D, Wang TJ, Vasan RS, D'Agostino RB Sr, Lipinska I, Keaney JF Jr, Benjamin EJ, O'Donnell CJ: Association of multiple inflammatory markers with carotid intimal medial thickness and stenosis (from the Framingham Heart Study). *Am J Cardiol* 2007, **99**:1598–1602.
 25. O'Leary DH, Polak JF, Kronmal RA, Manolio TA, Burke GL, Wolfson SK Jr: Carotid-artery intima and media thickness as a risk factor for myocardial infarction and stroke in older adults. Cardiovascular Health Study Collaborative Research Group. *N Engl J Med* 1999, **340**:14–22.
 26. Stein JH, Korcarz CE, Post WS: Use of carotid ultrasound to identify subclinical vascular disease and evaluate cardiovascular disease risk: summary and discussion of the American Society of Echocardiography consensus statement. *Prev Cardiol* 2009, **12**:34–38.
 27. Ashrafian H, Lim TK, Senior R: Carotid ultrasound imaging: an effective technique for detecting early atherosclerosis-vascular screening for cardiovascular disease has come of age. *J Am Soc Echocardiogr* 2007, **20**:1–3.
 28. Polak JF, Backlund JY, Cleary PA, Harrington AP, O'Leary DH, Lachin JM, Nathan DM: Progression of carotid artery intima-media thickness during 12 years in the Diabetes Control and Complications Trial/Epidemiology of Diabetes Interventions and Complications (DCCT/EDIC) study. *Diabetes* 2011, **60**:607–613.
 29. Selvin E, Coresh J, Golden SH, Boland LL, Brancati FL, Steffes MW: Glycemic control, atherosclerosis, and risk factors for cardiovascular disease in individuals with diabetes: the atherosclerosis risk in communities study. *Diabetes Care* 2005, **28**:1965–1973.
 30. Rantala AO, Paivansalo M, Kauma H, Lilja M, Savolainen MJ, Reunanen A, Kesäniemi YA: Hyperinsulinemia and carotid atherosclerosis in hypertensive and control subjects. *Diabetes Care* 1998, **21**:1188–1193.
 31. Mizuguchi Y, Tanaka H, Oishi Y, Miyoshi H, Emi S, Ishimoto T, Nagase N, Oki T: Predictive value of associations between carotid arterial sclerosis and left ventricular diastolic dysfunction in patients with cardiovascular risk factors. *J Am Soc Echocardiogr* 2007, **20**:806–812.
 32. Rema M, Mohan V, Deepa R, Ravikumar R: Association of carotid intima-media thickness and arterial stiffness with diabetic retinopathy: the Chennai Urban Rural Epidemiology Study (CURES-2). *Diabetes Care* 2004, **27**:1962–1967.
 33. Hayaishi-Okano R, Yamasaki Y, Katakami N, Ohtoshi K, Gorogawa S, Kuroda A, Matsuhisa M, Kosugi K, Nishikawa N, Kagimoto Y, Hori M: Elevated C-reactive protein associates with early-stage carotid atherosclerosis in young subjects with type 1 diabetes. *Diabetes Care* 2002, **25**:1432–1438.
 34. Standards of medical care in diabetes–2014. *Diabetes Care* 2014, **37**(Suppl 1):S14–S80.
 35. Kuczmarski RJ, Ogden CL, Grummer-Strawn LM, Flegal KM, Guo SS, Wei R, Mei Z, Curtin LR, Roche AF, Johnson CL: CDC growth charts: United States. *Adv Data* 2000, **314**:1–27.
 36. Chobanian AV, Bakris GL, Black HR, Cushman WC, Green LA, Izzo JL Jr, Jones DW, Materson BJ, Oparil S, Wright JT Jr, Roccella EJ: The seventh report of the Joint National Committee on prevention, detection, evaluation, and treatment of high blood pressure: the JNC 7 report. *JAMA* 2003, **289**:2560–2572.
 37. James PA, Oparil S, Carter BL, Cushman WC, Dennison-Himmelfarb C, Handler J, Lackland DT, LeFevre ML, MacKenzie TD, Ogedegbe O, Smith SC Jr, Svetkey LP, Taler SJ, Townsend RR, Wright JT Jr, Narva AS, Ortiz E: 2014 evidence-based guideline for the management of high blood pressure in adults: report from the panel members appointed to the Eighth Joint National Committee (JNC 8). *JAMA* 2014, **311**:507–520.
 38. Ceriello A, Kumar S, Piconi L, Esposito K, Giugliano D: Simultaneous control of hyperglycemia and oxidative stress normalizes endothelial function in type 1 diabetes. *Diabetes Care* 2007, **30**:649–654.
 39. Howard G, Sharrett AR, Heiss G, Evans GW, Chambless LE, Riley WA, Burke GL: Carotid artery intimal-medial thickness distribution in general populations as evaluated by B-mode ultrasound. *ARIC Investigators Stroke* 1993, **24**:1297–1304.
 40. Laing SP, Swerdlow AJ, Slater SD, Burden AC, Morris A, Waugh NR, Gatling W, Bingley PJ, Patterson CC: Mortality from heart disease in a cohort of 23,000 patients with insulin-treated diabetes. *Diabetologia* 2003, **46**:760–765.
 41. Kautzky-Willer A, Stich K, Hintersteiner J, Kautzky A, Kamyar MR, Saukel J, Johnson J, Lemmens-Gruber R: Sex-specific-differences in cardiometabolic risk in type 1 diabetes: a cross-sectional study. *Cardiovasc Diabetol* 2013, **12**:78.
 42. Cherney DZ, Montanari A: Gender, clamped hyperglycemia and arterial stiffness in patients with uncomplicated type 1 diabetes mellitus. *Clin Exp Hypertens* 2013, **36**:187–193.
 43. Libby P, Nathan DM, Abraham K, Brunzell JD, Fradkin JE, Haffner SM, Hsueh W, Rewers M, Roberts BT, Savage PJ, Skarlatos S, Wassef M, Rabadan-Diehl C: Report of the National Heart, Lung, and Blood Institute-National Institute of Diabetes and Digestive and Kidney Diseases Working Group on cardiovascular complications of type 1 diabetes mellitus. *Circulation* 2005, **111**:3489–3493.
 44. Schnell O, Cappuccio F, Genovese S, Standl E, Valensi P, Ceriello A: Type 1 diabetes and cardiovascular disease. *Cardiovasc Diabetol* 2013, **12**:156.
 45. Distiller LA, Joffe BI, Melville V, Welman T, Distiller GB: Carotid artery intima-media complex thickening in patients with relatively long-surviving type 1 diabetes mellitus. *J Diabetes Complications* 2006, **20**:280–284.
 46. Secrest AM, Becker DJ, Kelsey SF, Laporte RE, Orchard TJ: Cause-specific mortality trends in a large population-based cohort with long-standing childhood-onset type 1 diabetes. *Diabetes* 2010, **59**:3216–3222.
 47. Purnell JQ, Zinman B, Brunzell JD: The effect of excess weight gain with intensive diabetes mellitus treatment on cardiovascular disease risk factors and atherosclerosis in type 1 diabetes mellitus: results from the Diabetes Control and Complications Trial/Epidemiology of Diabetes

- Interventions and Complications Study (DCCT/EDIC) study. *Circulation* 2013, **127**:180–187.
48. Goldfine AB, Beckman JA, Betensky RA, Devlin H, Hurlley S, Varo N, Schonbeck U, Patti ME, Creager MA: **Family history of diabetes is a major determinant of endothelial function.** *J Am Coll Cardiol* 2006, **47**:2456–2461.
 49. Halcox JP, Donald AE, Ellins E, Witte DR, Shipley MJ, Brunner EJ, Marmot MG, Deanfield JE: **Endothelial function predicts progression of carotid intima-media thickness.** *Circulation* 2009, **119**:1005–1012.
 50. Empen K, Lorbeer R, Volzke H, Reffelmann T, Schipf S, Nauck M, Kerner W, Wallaschofski H, Felix SB, Dörr M: **Do patients with type 1 and type 2 diabetes really have an impaired endothelial function? A population-based propensity score matching analysis.** *Cardiovasc Diabetol* 2013, **12**:174.
 51. Thorn LM, Forsblom C, Waden J, Soderlund J, Rosengard-Barlund M, Saraheimo M, Heikkilä O, Hietala K, Pettersson-Fernholm K, Ilonen J, Groop PH, FinnDiane Study Group: **Effect of parental type 2 diabetes on offspring with type 1 diabetes.** *Diabetes Care* 2009, **32**:63–68.
 52. Makimattila S, Ylitalo K, Schlenzka A, Taskinen MR, Summanen P, Syvanne M, Yki-Jarvinen H: **Family histories of Type II diabetes and hypertension predict intima-media thickness in patients with Type I diabetes.** *Diabetologia* 2002, **45**:711–718.
 53. Rathsman B, Rosfors S, Sjöholm A, Nyström T: **Early signs of atherosclerosis are associated with insulin resistance in non-obese adolescent and young adults with type 1 diabetes.** *Cardiovasc Diabetol* 2012, **11**:145.
 54. Erbey JR, Kuller LH, Becker DJ, Orchard TJ: **The association between a family history of type 2 diabetes and coronary artery disease in a type 1 diabetes population.** *Diabetes Care* 1998, **21**:610–614.
 55. Tuomilehto J, Borch-Johnsen K, Molarius A, Forsen T, Rastenyte D, Sarti C, Reunanen A: **Incidence of cardiovascular disease in Type 1 (insulin-dependent) diabetic subjects with and without diabetic nephropathy in Finland.** *Diabetologia* 1998, **41**:784–790.
 56. Suboc TM, Dharmashankar K, Wang J, Ying R, Couillard A, Tanner MJ, Widlansky ME: **Moderate obesity and endothelial dysfunction in humans: influence of gender and systemic inflammation.** *Physiol Rep* 2013, **1**:1–10.
 57. Recio-Rodriguez JJ, Gomez-Marcos MA, Patino-Alonso MC, Agudo-Conde C, Rodriguez-Sanchez E, Garcia-Ortiz L, Vasorisk group: **Abdominal obesity vs general obesity for identifying arterial stiffness, subclinical atherosclerosis and wave reflection in healthy, diabetics and hypertensive.** *BMC Cardiovasc Disord* 2012, **12**:3.
 58. Wang TJ, Nam BH, D'Agostino RB, Wolf PA, Lloyd-Jones DM, MacRae CA, Wilson PW, Polak JF, O'Donnell CJ: **Carotid intima-media thickness is associated with premature parental coronary heart disease: the Framingham Heart Study.** *Circulation* 2003, **108**:572–576.
 59. Genuth SM, Backlund JY, Bayless M, Bluemke DA, Cleary PA, Crandall J, Lachin JM, Lima JA, Milao C, Turkbey EB, DCCT/EDIC Research Group: **Effects of prior intensive versus conventional therapy and history of glycemia on cardiac function in type 1 diabetes in the DCCT/EDIC.** *Diabetes* 2013, **62**:3561–3569.
 60. Matheus AM, Gomes MB: **Early aggressive macrovascular disease and type 1 diabetes mellitus without chronic complications: a case report.** *BMC Res Notes* 2013, **6**:222.

doi:10.1186/1475-2840-13-87

Cite this article as: Andrade et al.: Influence of a family history of type 2 diabetes, demographic and clinical data on carotid intima-media thickness in patients with type 1 diabetes: a cross-sectional study. *Cardiovascular Diabetology* 2014 **13**:87.

Submit your next manuscript to BioMed Central and take full advantage of:

- Convenient online submission
- Thorough peer review
- No space constraints or color figure charges
- Immediate publication on acceptance
- Inclusion in PubMed, CAS, Scopus and Google Scholar
- Research which is freely available for redistribution

Submit your manuscript at
www.biomedcentral.com/submit

