

# Calretinin: A Gene for a Novel Calcium-binding Protein Expressed Principally in Neurons

John H. Rogers

Medical Research Council Laboratory of Molecular Biology, Cambridge CB2 2QH, United Kingdom

**Abstract.** A novel gene of the calmodulin superfamily, encoding a 29-kD neuronal protein here named "calretinin," has been isolated as a cDNA clone from chick retina. The encoded sequence includes four putative calcium-binding sites and a fusion protein binds calcium. The most similar protein known is the 28-kD intestinal calcium-binding protein, calbindin (58% homology). Both genes date from before the divergence of chicks from mammals. The distribution

of calretinin and calbindin mRNAs in chick tissues has been mapped using RNA gel blots and in situ hybridization. RNAs from both genes are abundant in the retina and in many areas of the brain, but calretinin RNA is absent from intestine and other nonneural tissues. Calretinin and calbindin are expressed in different sets of neurons throughout the brain. Calretinin RNA is particularly abundant in auditory neurons with precisely timed discharges.

**T**HE superfamily of calcium-binding proteins, whose prototype is calmodulin, contains at least a dozen members which perform a wide variety of calcium-dependent functions in different tissues. Calmodulin itself regulates several important enzymes in most cell types (34). Troponin C and the myosin light chains regulate muscle contraction (1). Parvalbumin, another muscle protein, appears to be involved in terminating fast contractions (26). Another important member of the superfamily is the 28-kD vitamin D-dependent intestinal calcium-binding protein (70), also known as cholecalciferol 28k, spot 35, or visinin (47a), and now re-named calbindin D<sub>28k</sub>—hereafter "calbindin." Calbindin appears to be involved in intestinal calcium transport, but is also present in kidney, bone, and several other tissues (30, 46, 65). The calbindin gene has been cloned by several groups (21, 27, 28, 71, 72).

Many neurons in the brains of mammals and of birds exhibit immunoreactivity for parvalbumin (7, 9, 13, 15, 17, 18) or for calbindin (5, 20, 22, 29, 30, 33, 57). Each is present only in some neurons, commonly throughout the whole neuron including the dendritic tree and axonal terminals. They are both very abundant in the Purkinje cells of the cerebellum, and calbindin constitutes ~15% of the soluble protein of these cells (5, 6, 30, 40, 47, 64). But elsewhere in the brain, calbindin and parvalbumin immunoreactivities are mostly in separate neurons (9, 11, 24). Both are also present in rat retina (17, 50), and calbindin immunoreactivity is present in chick retina (25, 53, 58).

The function of these proteins in neurons is unknown. An initial suggestion that parvalbumin was colocalized with GABA (15) has not been generally confirmed by more extensive surveys (13, 18). Parvalbumin-containing neurons do generally have rapid firing rates (9, 14). The numerous calbindin-immunoreactive cells are not known to have any common features.

I now report the isolation from chick retina of an mRNA encoding a new member of the superfamily, which is expressed in the retina and in brain neurons. Because of its homology with calcium-binding proteins and its tissue of origin, I refer to the encoded protein as calretinin. The apparent calbindin immunoreactivity in some neurons is attributable to calretinin. Calbindin and calretinin are located in distinct sets of neurons.

## Materials and Methods

### Cloning cDNA

All RNA samples were isolated by the guanidinium thiocyanate method (42) and were poly(A)-selected on oligo(dT)-cellulose unless otherwise stated. Poly(A)<sup>+</sup> RNA from retinas of chicks 1-3 d old was used for cDNA cloning. The cDNA first strand was primed with a dT-tailed Eco RI linker, 5'-CCCGAATTCGGG(T)<sub>n</sub>-3'. After first-strand synthesis, the reaction was boiled for 4 min to destroy the RNA, and hairpin-primed second-strand synthesis and nuclease S1 cleavage were performed as in reference 42. The cDNA was blunt-ended with Klenow enzyme, digested with Eco RI, size selected on a Sepharose-CL4B column, and ligated to M13-mp9 DNA which had been cut with Eco RI plus Hinc II and phosphatased. This procedure should yield inserts with a blunt 5' junction and an Eco RI 3' junction. The 3' junction should be adjacent to the universal primer site, having been formed either from the Eco RI linker/primer or, as probably happened in clone RU37, from an internal Eco RI site in the cDNA.

The ligation mixture was transfected into *Escherichia coli* strain CMK603. To identify retina-specific clones, plaques were screened by hybridization with labeled cDNA to chick retina RNA or to wingbud RNA of 15-d-old chick embryos, prepared with  $\alpha^{32}\text{P}$ dATP to high specific activity. Clone RU37 was one clone positive with retina cDNA only.

### Clone Analysis

DNA sequencing was done using the dideoxy technique (56) with  $\alpha^{32}\text{S}$ -dATP and gradient gels (8). All of RU37 was sequenced on both strands.

The chick calbindin cDNA clone pWH11 (71) was given by P. Wilson and E. Lawson, along with two subclones of it in M13 phage, SS58 (coding sequence) and SS10 (3' untranslated sequence), both oriented such that a la-

```

      10      20      30      40
A P H L H L A D V S A S Q F L D V W R H F D A D G N G Y I E G K E L E N F F Q E
GCCCGCCACCTGCACCTGGCGGACGTCAAGCCCTCGCAGTTCCTCGAGTGTGGCGGCACTTCGACGCCGAGGAAATGGCTACATCGAAGGCAAAGAGCTGGAATACTTCTCCAGGAG
      10      20      30      40      50      60      70      80      90      100      110      120
L E S A R K R K G T G V D S K R D S L G D K M K E F M H K Y D K N A D G K I E M A E
CTGGAAAGTGCAGGAAGGGCACCGGGTGGACTCCAAGAGGGACAGCTGGGCGCAAGATGAAGGAGTTCATGCACAAGTATGACAAAATGAGATGGCGGAG
      130      140      150      160      170      180      190      200      210      220      230      240
L A Q I L P T E E N F L L C F R Q H V G S S S E F M E A W R R Y D T D R S G Y I
CTGGCCAGATCTGCCCGCAGGAGAACTTCTGTCTGTTCGCGCAGCATGTGGGCTCCAGCTCAGAGTTCATGGAGGCATGGAGGAGGTACGACACGGATCGCAGTGGCTACATC
      XhoII      260      270      280      290      300      310      320      330      340      350      360
E A N E L K G F L S D L L K K A N R P Y D E A K L Q E Y T Q T I L R M F D M N G
GAAGCCAAACGAGCTGAAGGGCTTCTTATCGGACCTGTGAAGAAGGCGAACCGCCATATGATGAGGCCAAGCTGCAGGAGTACACGCGAGACCATCTGCGGATGTTTGACATGAACGGG
      370      380      390      400      410      420      430      440      450      460      470      480
D G K L G L S E M S R L L P V Q E N F L L K F Q G M K L S
GACGGAACTGGGCGCTTCCGAGATGTCCCGACTGTGCTGTGCAAGAAAATTCCTTCTTAAGTTTCAGGGGATGAAGCTGTCCT
      490      500      510      520      530      540      550      560

```

Figure 1. Sequence of cDNA insert in clone RU37.<sup>2</sup>

beled complementary strand would hybridize to the calbindin mRNA. It is clear from the results that the calretinin and calbindin genes do not cross-hybridize under the conditions used.

DNA gel blots used the method of Southern (59). RNA gel blots used formaldehyde gels (42), blotted onto nitrocellulose immediately after electrophoresis. The probes were labeled with <sup>32</sup>P either by nick-translation or by single-strand synthesis (2). RNA gel blots were hybridized (66) at 42°C, and were washed in 0.1× standard saline citrate (SSC)-0.15 NaCl, 15 mM sodium citrate, pH, 7.0, 0.1% SDS, at 50°C. DNA gel blots were hybridized similarly, but at 37°C, and were washed in 2× SSC, 0.1% SDS at 50°C.

### In situ Hybridization (ISH)<sup>1</sup>

ISH was performed with single-stranded DNA probes, labeled with <sup>35</sup>S plus a trace of <sup>32</sup>P, as previously described (52). After hybridization, sections were washed in 2× SSC at room temperature, and some also in 0.1× SSC at 50°C as for the gel blots; there was no significant difference in the results. Calbindin probes SS58 and SS10 gave similar results.

Most of the results shown here were obtained with the brain from a 1.5-d-old chick which had been perfused with 4% paraformaldehyde. The major positive areas were also recorded in other, fresh-frozen chick brains.

### Expression of Fusion Protein

Two fusion proteins were made in the pUR289 vector (55). One contained the whole RU37 insert, excised with polylinker as a Hind III-Eco RI fragment and inserted into the Hind III site. The other contained the 3' half, from the Xho II site to the 3' end (Fig. 1), inserted into the Bam HI site. Bacteria containing these plasmids, from 2.5 ml of overnight culture, were resuspended in 0.2 ml of 62 mM Tris, pH 6.8, 0.7 M 2-mercaptoethanol, 10% glycerol, 2.3% SDS, 0.001% bromophenol blue, and were lysed by sonication, spun to remove debris, and boiled for 10 min. Samples of 4 μl were run on 9.5% SDS-PAGE. Electrophoresis and <sup>45</sup>Ca-binding were done as in Maruyama et al. (43).

### In Vitro Translation

In vitro translation, immunoprecipitation, and SDS-PAGE were done as in reference 19. For immunoprecipitation, 0.5 μg of poly(A)<sup>+</sup> RNA was translated in reticulocyte lysate. One third of the reaction product was then incubated with antiserum against calbindin (provided by Dr. D. E. M. Lawson) and one third with normal rabbit serum. Immunoprecipitates were recovered using Protein A-Sepharose CL4B (Pharmacia Fine Chemicals, Uppsala, Sweden), and were subjected to electrophoresis alongside portions of the unfractionated translation products.

For hybrid selection of mRNA, several micrograms of M13 phage DNA carrying an insert complementary to RU37 were boiled, made up to 2× SSC, spotted onto small squares of nitrocellulose, and baked. Hybrid selection was done with 10 μg of poly(A)<sup>+</sup> RNA, as in reference 51. Eluted

RNA was translated in reticulocyte lysate and the products were subjected to electrophoresis as above.

## Results

### The Calretinin Gene

A small cDNA library was made from chick retina RNA in an M13 phage vector as described in Materials and Methods, and was screened for retina clones by plaque hybridization with <sup>32</sup>P-labeled cDNA from retina and from embryo wing-bud. One of the clones identified as retina-specific by this criterion was RU37. It was sequenced, and found to contain a 568-nucleotide insert with a continuous open reading frame (Fig. 1). A computer library search identified the encoded sequence as a member of the calmodulin superfamily

```

CALM:      ADQLTEEQIAEFKEAFSL  FDKDGDGTTITKEL  GTVMRSL-----
          * * * * *
CALR:      . . . APHLHLADVSAQFLDVWRH  FDADGNGYIEGKEL  ENFFQELSEARRKGTVD
          * * * * *
CALB:      MTAETHLQGVESAAQFFFIWHH  YDSGNGYMDGKEL  QNFIQELQARKKAGLD-
          * * * * *
CALB:      MAESHLQSSLITASQFFFIWLH  FDADGSGYLEGKEL  QNLIQELQARKKAGLE-

          GQNPTAEALQDMINE  VDADGNGTIDFPEF  LTMARKM-----
          KRDSLGDKMKKPFMHK  YDRNADGKIEMAE  AQILPTEENFLLCFR-
          ----LTPMKAFVDQ  YGRATDGRIGIVEL  AQVLPTEENFLFFRC
          * * * * *
          ----LSPMKTFVDQ  YGQRDDGKIGIVEL  AHVLPTEENFLLLRC

          KDTDSEEEIREAFRV  FDKDNGVYSAAEL  RHVMTNL-----
          * * * * *
          QHVGSSSEFMEAWRR  YDTRSGYIEANEL  KGFLSLLKKNRPY
          * * * * *
          QQLKSSDFMQTWRK  YDSHSGFIDSEEL  KSFLKDLLQKANKQI
          * * * * *
          QQLKSCQEFMKTWRK  YDTHSGFIETEEL  KNFLKDLLEKANKTV

          GEKLTDEEVDEMIRE  ADIDGDGQVNYEAF  VQMMAK*
          * * * * *
          DEAKLQEYTTILRM  FDMNGDGKLGSEM  SRLLPVQENFLKFGMKLS.
          * * * * *
          EDSKLTETEIMLRM  FDANNDGKLELTEL  ARLLPVQENFLIKFQGVKRC
          * * * * *
          DDTKLAEYTDLMLKL  FDSNNDGKRLQTEM  ARLLPVQENFLKFGKIRMC

(CALB:)  ----AKEFNKAFEM  YDQDNGYIDENEL  DALLKDLCEKNKELDIN
          * * * * *
          ----GKEFNKAFEL  YDQDNGYIDENEL  DALLKDLCEKNKQELDIN

(CALB:)  ----NLATYKKSIM  ALSDG-GRLYRAEL  ALILCAEN*
          * * * * *
          ----NISTYKKNIM  ALSDG-GRLYRTDL  ALILSAGDN*

```

Figure 2. Alignment of calcium-binding protein sequences, all translated from cDNA. CALM, calmodulin (34). CALR, calretinin (Fig. 1). CALB, calbindin. The upper row is chick calbindin (71); the lower row is rat calbindin (72).

1. Abbreviation used in this paper: ISH, in situ hybridization.

2. These sequence data have been submitted to the EMBL/GenBank Data Libraries under the accession number Y00625.

of calcium-binding proteins. The closest homology is with calbindin (Fig. 2). When the two sequences are aligned, the RU37 insert begins a few codons after the calbindin initiation codon, and ends after the fourth of the six sites which match the canonical calcium-binding site sequence. From the method of clone construction, this 3' truncation may be due to an internal Eco RI site.

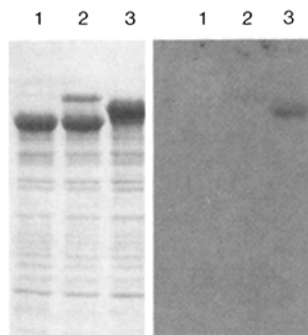
The sequence implied that the encoded protein, named calretinin, should bind calcium. To test this, two fusion proteins were made in the pUR289 vector. One contained the whole RU37 insert, and the other contained domains III and IV. Lysates of bacteria expressing these  $\beta$ -galactosidase-calretinin fusion proteins were run on SDS-PAGE and assayed for binding of  $^{45}\text{Ca}$ . Both fusion proteins bound  $^{45}\text{Ca}$  whereas  $\beta$ -galactosidase itself did not (Fig. 3).

On chick genomic DNA blots,  $^{32}\text{P}$ -labeled RU37 insert lights up two bands with Bam HI and one band with Hind III. A clone of the chromosomal gene corresponding to RU37 (Rogers, J., and M. Goedert, unpublished data) contains a site for Bam HI within an intron interrupting the cDNA sequence. It is therefore likely that RU37 hybridizes to only a single gene in the chick. It also hybridizes faintly to a pair of bands in rat and guinea pig DNA at low stringency.

Similar genomic DNA blots were hybridized with a probe for the calbindin gene, pWH11 (see Materials and Methods). This lights up one or more bands in chick and (faintly) one band in rat, which are different from those seen with RU37. Thus the probes for calretinin and calbindin do not cross-hybridize even under these low-stringency conditions, and each corresponds to a separate gene in chicks and probably in mammals.

### Calretinin and Calbindin mRNAs

Blots of RNA from various chick tissues were hybridized with probes for calretinin and calbindin (Fig. 4). In retina and in the brain, the calretinin probe detected major RNAs of 1.4 and 1.2 kb, and the calbindin probes detected major RNAs of  $\sim 3.2$  and 2.3 kb. The same calbindin RNAs were present in intestine and kidney, and are presumably the same as those of 3.1 and 2.0 kb seen by others (27, 32). Calretinin RNAs, on the other hand, were absent from intestine and kidney, and also from the other nonneural tissues listed in the Fig. 4 legend. The only nonneural tissue in which traces of



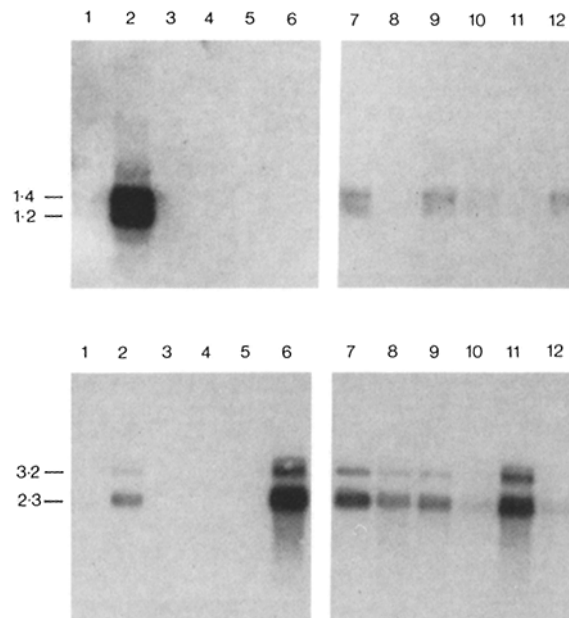
**Figure 3.**  $\beta$ -Galactosidase-calretinin fusion proteins bind calcium. Lysates of bacteria containing plasmids were run on SDS-PAGE; the left panel was stained with Coomassie Blue, the right panel blotted and incubated with  $^{45}\text{Ca}$  (42). (Lane 1) Vector pUR289 ( $\beta$ -galactosidase from the plasmid is the most densely stained band); (lane 2) fusion pUR37.1, containing the whole RU37 insert (the fusion protein is partly degraded to  $\beta$ -galactosidase); (lane 3) pURXR.3, containing RU37 calcium-binding sites III and IV (from the Xho II site to the 3' end in Fig. 1). Note that the fusion proteins bind  $^{45}\text{Ca}$  but  $\beta$ -galactosidase does not.

calretinin RNA were found was bone. Several preparations of RNA from bone (femur of day-old chick including marrow and traces of muscle), which appeared to be intact on gels, all displayed a low molecular weight smear of hybridization with the calretinin probe. This suggests that calretinin may be expressed in some cell type in bone which is exceptionally prone to autolysis during extraction, perhaps osteoclasts.

Within the brain, the calbindin RNAs were found in all regions and were most abundant in the cerebellum, which is known to be a major source of calbindin. The calretinin RNAs were also found in all regions but were comparatively rare in cerebellum and cerebral hemispheres; they were most abundant in the retina.

### Cellular Distribution of Calretinin and Calbindin mRNAs

To identify the cells expressing each gene, ISH was performed on chick brain sections using  $^{35}\text{S}$ -labeled single-stranded DNA probes specific for each gene. The results showed that calretinin and calbindin are generally, if not entirely, in different cells (Table I and Fig. 5). All the positive cells appear to be neurons.



**Figure 4.** RNA gel blots hybridized with calretinin and calbindin probes. (Upper) Calretinin: single-stranded probe from clone RU37. Left panel exposed for 4 d at  $-70^{\circ}\text{C}$  with intensification screen; right panel exposed overnight at room temperature. (Lower) Calbindin: nick-translated probe pWH11. Both panels exposed overnight at  $-70^{\circ}$  with intensification screen. Lane 1 contains 6  $\mu\text{g}$  of poly(A) $^{+}$  retina RNA. The other lanes contain poly(A) $^{+}$  RNA, 5  $\mu\text{g}$ , from tissues of chicks 1-2-d old unless stated otherwise, as follows: (lane 2) retina, 3  $\mu\text{g}$ ; (lane 3) liver, 3  $\mu\text{g}$ ; (lane 4) wingbud of 15-d-old embryo, 3  $\mu\text{g}$ ; (lane 5) muscle, 5  $\mu\text{g}$ ; (lane 6) small intestine, 5  $\mu\text{g}$ ; (lane 7) retina, 3.5  $\mu\text{g}$ ; (lane 8) telencephalon; (lane 9) diencephalon plus mesencephalon except optic lobes; (lane 10) optic lobes; (lane 11) cerebellum; (lane 12) pons plus medulla. RNA gel blots were also performed with the following total RNAs, 20  $\mu\text{g}$  per lane, and were negative for calretinin, under conditions where it was readily detected in retina and spinal cord RNA: kidney, duodenum, gizzard, spleen, heart.

Table I. Positive Regions for CaBP RNA and Immunoreactivity in Chick Brain

Abbreviation		Calretinin ISH (RU37)	Calbindin ISH (SS58,SS10)	Calbindin immunoreactivity Roth et al. Jande et al.	
<b>Telencephalon</b>					
Hyperstriatum	HV,HD,HA	-	++ s	+	+++ s
Neostriatum	N	-	++ s	+	+++ s
Archistriatum	Av,Ad	-	+ s	+	
Nuc. septalis med.	SM	-	+ s	+	
<b>Palaeostriatum:</b>					
augmentatum	PA	(periph.) + s	(+ ss)	+	+
primitivum	PP	+	(+ ss)		
<b>Diencephalon</b>					
Nuc. rotundus & triangularis	Rt, T	-	++	+	+
Nuc. spiriformis med.	SpM	++	-		+
Nuc. spiriformis lat.	SpL	-	++		?++
Nuc. lat. ant. thalami	LA	+	-	+	
Nuc. ventrolateralis thalami	VLT	(± s)	+ s		+++ s
Nuc. geniculatus lat. (dorsalis)	GLd	+	-	+	
Nuc. posteroventralis thalami	PV	+ s	nd	-	
Nuc. subrotundus	SRt	++	-		
Habenula*		(HM) +	(HL) ++	(HL) +	(HM) +++
<b>Dorsal thalamus‡</b>					
Nuc. dorsolateralis	DL	(SMe,SPC) ++	(AP,DLP) ++	(DLP) +	(AP,SHL) ++ s
		(DLL) ++			
Nuc. dorsomedialis	DM	-	+	+	
<b>Hypothalamus:§</b>					
Nuc. periventricularis mag.	PVM	-	++	+	+++
Nuc. med. hypothalami post.	PMH	-	++	+	++ s
Dorsolateral part		(SCE,AL) (+ ss)	(+ ss)	(AL) +	(AHP) ++ s
Ventrolateral part		(SCI) ++ s	(SCI,PLH) ++ s	(PLH) +	(SCI) ++ s
		(LHy-lat.) ++ s	(LHy,AVT) ++ s		(ML,AVT) ++ s
Nuc. ant. med. hypothalami	AM	+	+ s	+	
Nuc. ectomamillaris	EM	+	-	+	+
<b>Mesencephalon</b>					
Locus coeruleus	LoC	(ventral) (+ sg)	-	+	
Nuc. semilunaris	SLu	++	-		
Nuc. ventralis lemnisci lat.	VLV	(±)	-		+++
Reticular formation¶	Ret	(SCv,Ret) ++ s	(in SCv,FRL) (+ sg)	(Ret) +	(SCv) + s
<b>Optic lobes:</b>					
Tectum	TeO	(11-13) (±) s	(5-6) +	(5-6) +	++ s
Nuc. intercollicularis	ICo	+ s	+s	[MLd-lat.] (+ sg)	+ s
Nuc. isthmi (mag.)	Imc	++	-	+	++
Nuc. lentiformis mesencephali (mag.)	LMmc	++ s	-		++
Nuc. principalis precommissuralis	PPC	+ s	-		
<b>Cerebellum</b>					
Purkinje cells		-	+++	+	+++
<b>Metencephalon</b>					
Nuc. angularis	An	++	-	-	
Nuc. sens. princ. nervi trigemini	PrV	++	-		+
Nuc. vestibularis superior	VS	++	-	-	
Nuc. vestibularis lat.	VeL	++ s	-	-	
Nuc. vestibularis med.	VeM	(++ ss)	(+ ss)	(+ ss)	
Nuc. vestibularis descendens	VeD	+ s	(+ ss)	(+ ss)	+++ s
Nuc. laminaris	La	++	-	-	++
Nuc. mag.	MC	++	-	-	++
Nuc. nervi facialis	nVII	+	-	-	
Nuc. paragigantocellularis lat.	PGL	(OI-lat.) ++			
Nuc. olivaris inferior	OI	-	++	+	++
Nuc. solitarius	S	+ s	++	+	+++
Nuc. motorius dorsalis nervi vagi	nX	+	-	-	
Dorsolateral regions¶		(TTD,Ta) + s	(in TTD) (+ s sg)	(TTD) +	(Ta,ST) ++
			(CE) (+ ss)	(CE) +	
Ventral regions¶	Ret	(all) ++ s	(FRL) (+ ss)	(Ret) (+ ss)	(FRL) + s
<b>Spinal cord**</b>					
Dorsal regions		(med.) (+ sg)	(TTD) + s	(TTD,DH) +	(SG) +
Lateral regions		(+ sg)	-		(ST) ++
Vestibular ganglion‡‡		+	+		XX
<b>Retina§§</b>					
Photoreceptor layer	PRL	+	+		(cones) XX
Inner nuclear layer	INL (outer edge)	+	(±)		(horizontals) XX
Inner nuclear layer	INL (inner edge)	+	? (± ss)		(amacrines) XX
Ganglion cell layer	GCL				

Calbindin-positive cells predominate in the cerebral hemispheres, optic tectum, and cerebellum. In the cerebral hemispheres (Fig. 6, 7 e), calbindin is present in medium-sized cells (~13 µm) scattered all through the hemispheres, except in the palaeostriatum where they are very sparse. In contrast, calretinin is seen only in the palaeostriatum—in many cells in PP and in a narrow band of cells around the periphery of PA. In the tectum, calbindin is present in many cells of layer 5 and some of layer 6 (Fig. 7 f); calretinin is present only weakly, if at all, in the deeper layers. In the cerebellum, as expected, calbindin is very abundant in the Purkinje cells (Fig. 7 h), while calretinin is totally absent. (The slight signal on the RNA gel blot with calretinin is attributable to the calretinin-positive cells at the root of the cerebellum in the nucleus angularis and brachium conjunctivum.)

Of the major nuclei of the brain, some are strongly positive with calretinin and some with calbindin, while others express neither (Table I). The major calretinin-positive nuclei are isthmi magnocellularis (Fig. 7 a), spiriformis medialis, subrotundus, dorsolateralis anterior thalami, semilunaris, principalis nervi trigemini, laminaris, and magnocellularis. The major calbindin-positive nuclei are rotundus, spiriformis lateralis, habenula lateralis, and the inferior olive. In most of these, the signal is on all or (in rotundus, Fig. 7 g) on most of the large neurons that make up the nucleus.

The only nuclei which show similar patterns of expression with both genes are solitarius (Fig. 7 d) and intercollicularis, as well as the vestibular ganglion which was included on some sections. In nuclei solitarius and intercollicularis, and the vestibular ganglion, neither probe lights up all the cells, and these nuclei are each known to contain neurons of several types, so it is entirely possible that calretinin and calbindin are expressed in different cells.

In the more complex regions of the brainstem, there are positive cells with both probes, but their distribution is clearly different. In the hypothalamus, calretinin-positive cells predominate in the ventrolateral areas, while calbindin-positive cells are present throughout the hypothalamus, and especially in the medial nuclei. In the reticular formation of mid- and hind-brain, there is a similar contrast in the distribution of positive cells, which are moderately large neurons (14–20 µm) (although the largest neurons are negative). Calretinin-positive cells are widespread throughout the reticular formation of the midbrain and pons, and virtually ab-

sent from the lower medulla. Calbindin-positive cells are rare in the midbrain and pons, but abundant in the dorsal half of the lower medulla. Although the possibility of co-expression in a few cells cannot be excluded, these data indicate that calretinin and calbindin are generally in different populations of neurons.

In the chick retina, cells are too closely packed to be resolved by ISH, but calretinin and calbindin RNAs do show different distributions (Fig. 8). Calretinin signal is seen in all three nuclear layers. Calbindin signal is strong only on the photoreceptor layer; scattered groups of grains may indicate hybridization to scattered cells in the inner nuclear layer and ganglion cell layer.

In Table I, the ISH results are compared with published distributions of calbindin immunoreactivity. The immunoreactivity reported by Roth et al. (54) generally coincides with the calbindin RNA, but the presence of immunoreactivity in nucleus isthmi magnocellularis and a few other sites, which are positive for calretinin RNA but negative for calbindin RNA, suggests that the antiserum cross-reacted weakly with calretinin. The immunoreactivity reported by Jande et al. (29) coincides with the calbindin RNA and the calretinin RNA, indicating that their antiserum must have efficiently detected both proteins under their conditions. The probable basis of this cross-reaction is discussed below.

### Identification of Calretinin Protein

Calbindin antiserum immunoprecipitates a 29-kD protein, as well as 28-kD calbindin itself, from translation products of brain mRNA (49). As shown in Fig. 9 a (lanes 3–6), the 29-kD band is more abundant than calbindin in the translation products of chick retina and midbrain mRNA, but only calbindin is produced from cerebellum mRNA, consistent with the distributions of calretinin and calbindin RNAs reported above. The following experiment was therefore done to see whether the 29-kD band was calretinin.

Messenger RNA from retina and from midbrain was hybrid selected with an M13 subclone complementary to the RU37 sequence, then translated in reticulocyte lysate. The hybrid-selected mRNAs produced a 29-kD polypeptide (Fig. 9 b, lane 7). This is identical in size to the upper band immunoprecipitated by calbindin antiserum. These results strongly indicate that this 29-kD band is calretinin.

The first two data columns give the results from ISH. The third and fourth columns list all the areas showing calbindin immunoreactivity according to Roth et al. (54) and Jande et al. (29), except for a few midbrain nuclei which were not examined by ISH.

Abbreviations are from references 31 and 73. Other abbreviations: *s*, scattered cells; *ss*, sparsely scattered cells; *sg*, small group of cells; *ant.*, anterior; *post.*, posterior; *med.*, medialis; *lat.*, lateralis; *mag.*, magnocellularis.

In some regions, named areas are contiguous and poorly distinguished in the atlases, so different names may be used by different authors. Details of these regions are as follows.

\* Habenula. Calretinin and calbindin RNAs are in different nuclei. *HM*, habenula med.; *HL*, habenula lat.

‡ Dorsal thalamus. Calretinin RNA is in the most dorsal areas; calbindin in nuclei just ventral. *AP*, area prepectalis; *DLP*, DL post.; *DLL*, DL ant. (lat.); *SHL*, nuc. subhabenularis lat.; *SMe*, stria medullaris; *SPC*, nuc. superficialis parvocellularis.

§ Hypothalamus. Calbindin RNA is in cells which are abundantly scattered throughout most of the hypothalamus; calretinin RNA is in similar cells which are more restricted in distribution, being mainly in the lateral part of LH. *AHP*, area hypothalami posterior; *AL*, ansa lenticularis; *AVT*, area ventralis (Tsai); *LHy*, nuc. lat. hypothalami; *ML*, nuc. mamillaris lat.; *PLH*, nuc. lat. hypothalami post.; *SCE*, external cellular layer; *SCI*, internal cellular layer.

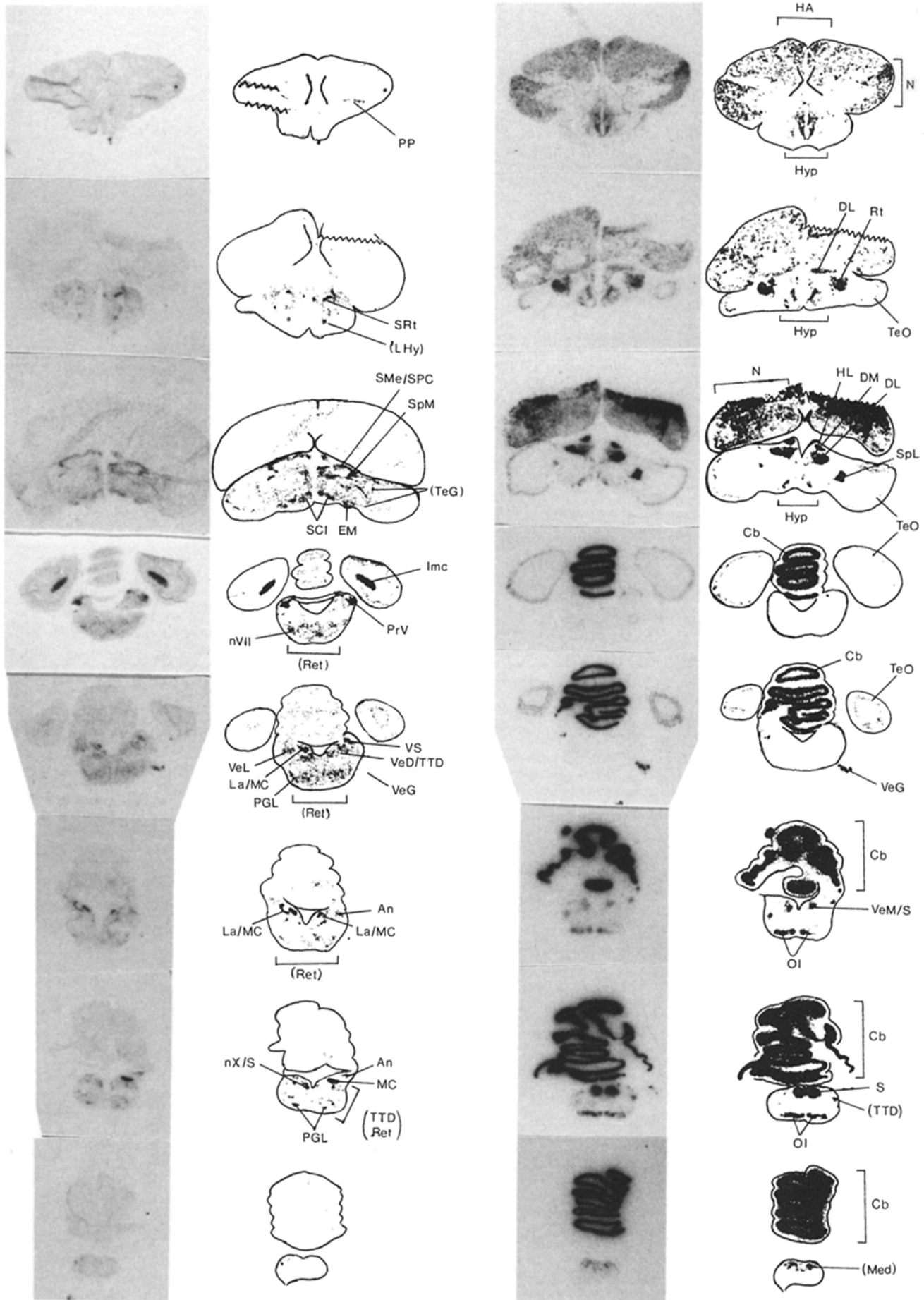
|| Reticular formation of mid- and hind-brain. Calretinin RNA is in cells that are abundantly scattered through much of the region; calbindin RNA is absent, except for a few cells in lateral regions. *FRL*, lateral reticular formation; *SCv*, nuc. subcoeruleus ventralis.

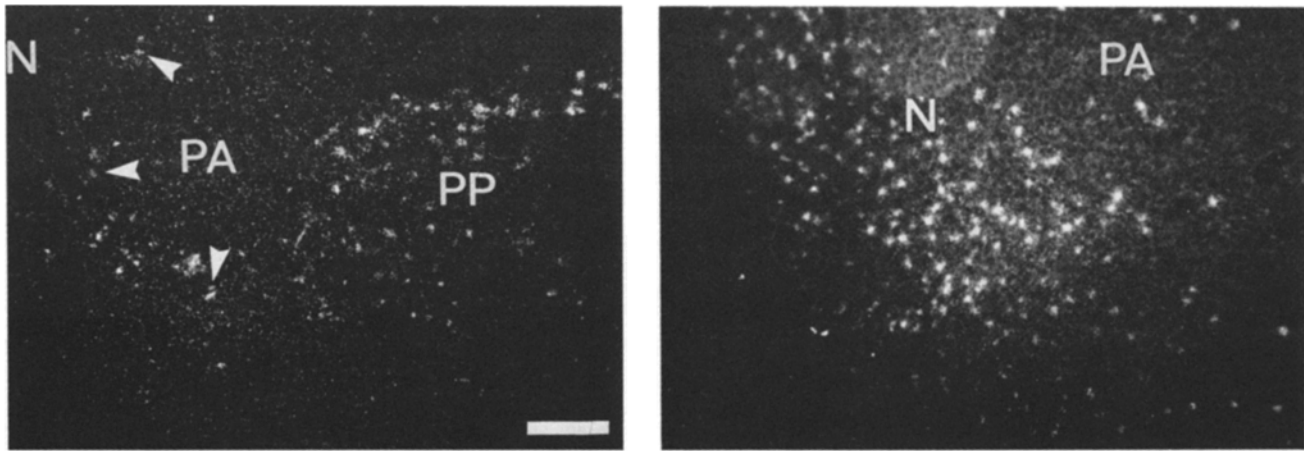
† Dorsolateral part of pons and medulla. Calretinin-positive cells are widespread; calbindin-positive cells are very few. There is a small clump of giant neurons intensely positive for calbindin within TTD. *TTD*, nuc. and tractus descendens nervi trigemini; *Ta*, nuc. tangentialis; *ST*, nuc. subtrigeminalis; *CE*, nuc. cuneatus externus.

\*\* Spinal cord at approximately C1 level. Calbindin-positive cells are widespread, all across the dorsal half, while calretinin-positive cells are restricted to two sparse clusters just ventral to the calbindin-positive cells. The ventral half is negative. *SG*, substantia gelatinosa Rolandi; *DH*, dorsal horn.

\*\* XX Vestibular ganglion immunoreactivity was reported in the cat (57).

§§ XX Retina immunoreactivity was reported in the chick by Schreiner et al. (58) (who saw it in all photoreceptors) and by Roman et al. (53) (who saw it in only one class of photoreceptors, the double yellow cones).





**Figure 6.** Sections of chick forebrain hybridized with probes for calretinin (*left*) and calbindin (*right*), viewed in dark field. The lateral surface of the brain crosses the left edge of each field and the ventral surface is at the bottom edge. *N*, neostriatum; *PA*, palaeostriatum augmentatum; *PP*, palaeostriatum primitivum. Bar, 200  $\mu$ m.

## Discussion

### Homology and Topology of Calretinin and Calbindin

Of all the known members of the calmodulin superfamily, 28-kD calbindin is the most homologous to calretinin and is the only one which aligns with it near continuously, the average homology being 58% (Fig. 2). This is less than the 76% homology of calbindin from chick to that from cow (62) or rat (72), and an analysis of informative residues (not shown) confirms that calretinin and calbindin diverged before the avian and mammalian calbindins. This is consistent with the genomic Southern blots which show that probes for the calretinin and calbindin genes of chick (which do not cross-hybridize) light up different bands in mammals, suggesting that the two genes had been separately conserved in chickens and mammals.

The characteristic calcium-binding site sequence of the calmodulin superfamily folds into a secondary structure called the "EF hand" (36, 37). These calcium-binding sites generally come in pairs, and the pairs form domains in the tertiary structures (4, 38). The predicted partial calretinin sequence contains four putative calcium-binding sites. A computer secondary structure prediction (23) (analysis not shown) indicates that each of them should form a turn or coil between two  $\alpha$ -helices, as in calmodulin, except for site II. The algorithm predicts continuous  $\alpha$ -helix across site II, suggesting that this site may be aberrant, like site II of calbindin.

Within calretinin and calbindin, sites I and II are most homologous to sites III and IV, respectively. The duplication of this pair of sites apparently occurred in the calbindin/calretinin ancestor independently of the similar duplication in calmodulin (Fig. 10), as all four calmodulin sites are more homologous to calbindin sites I and III than to sites II and IV (Fig. 2; and diagonal matrix plots [not shown]).

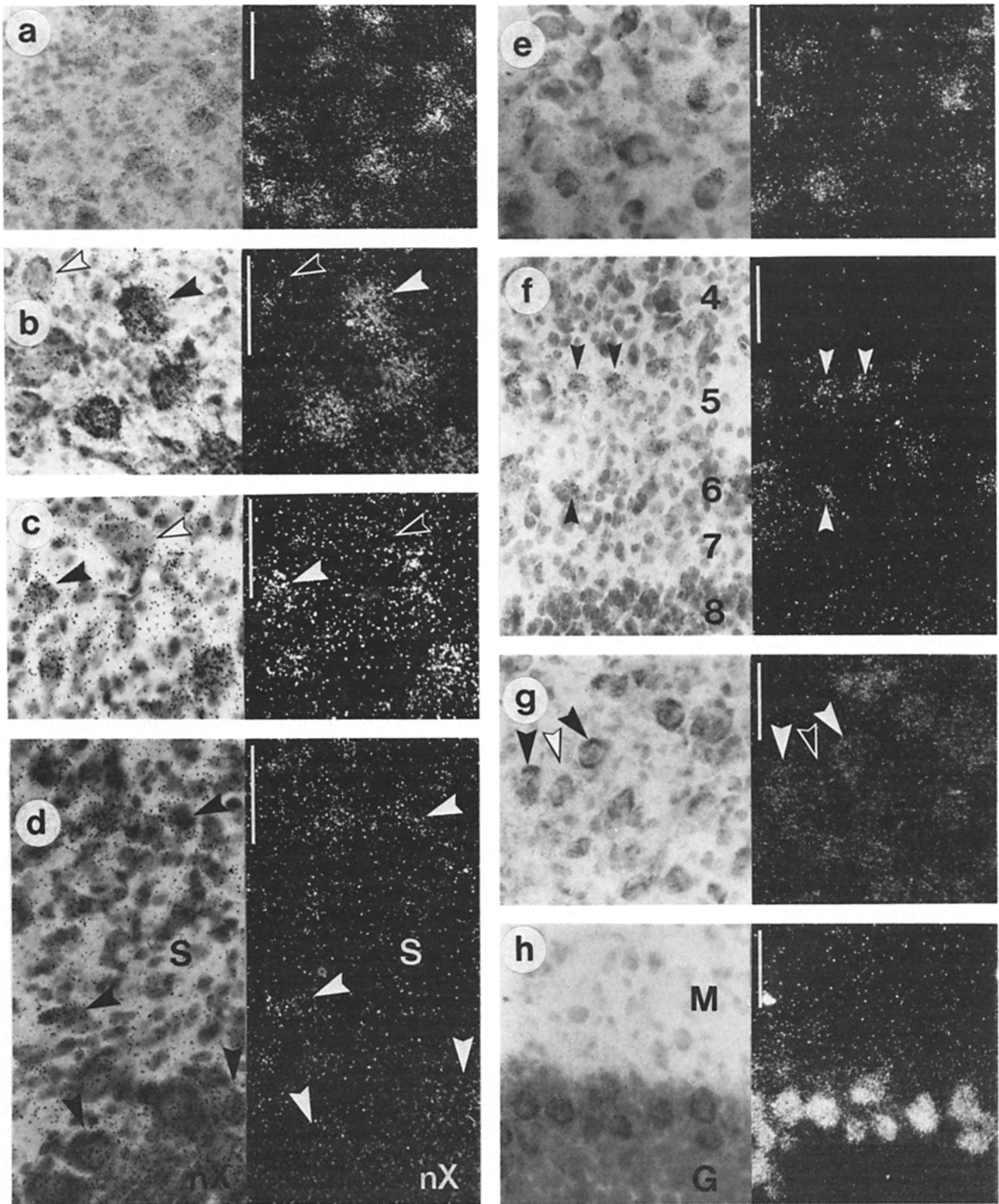
The sequences between the calcium-binding sites are longer in calretinin than in most members of the calmodulin superfamily, but are colinear with those of calbindin, except for the stretch between sites I and II. (The sequence of most of that divergent stretch in calretinin, together with the whole of RU37 nucleotides 151–512, has been confirmed by sequencing a genomic clone [Rogers, J., and M. Goedert, unpublished results].)

The most interesting parts of the sequence are those after sites II and IV, where homologous stretches of 14–15 amino acids are virtually identical between calretinin and calbindin, and are also highly conserved in calbindin itself (Fig. 2). Each of these stretches begins in the alpha-helix after the calcium-binding site and extends into a predicted loop (as the secondary structure program predicts a loop and turn, not a continuous helix, between sites II and III). Each conserved stretch is followed by a cysteine (except that the RU37 sequence does not extend that far after the second stretch), but these cysteines are not in exactly corresponding positions, and therefore were probably introduced independently into each of these loops in evolution. By comparison with the structures of other members of the superfamily, it is expected that these conserved stretches will be accessible at the surface of the proteins, where they might interact with some other protein.

These conserved stretches may also be the basis of the serological cross-reactivity between calretinin and calbindin which was inferred from the observed distributions. Because both proteins appear to be conserved in mammals, surveys of calbindin immunoreactivity in mammals (6, 16, 20, 22, 29, 33, 50, 57) may also have detected calretinin as well as calbindin.

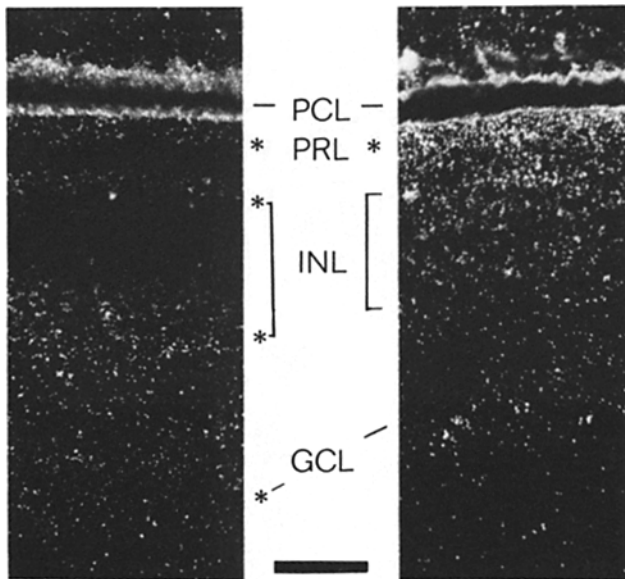
The primary translation product of calretinin mRNA is 29 kD, and this is almost certainly the same molecule that is immunoprecipitated by calbindin antisera (Fig. 9). This protein

**Figure 5.** ISH with probes for calretinin (*left*, probe RU37) and calbindin (*right*, probe SS58), autoradiographed on X-ray film. Abbreviations are as in Table I, plus: *Hyp*, hypothalamus; *VeG*, vestibular ganglion; *Med*, dorsal medulla. Zigzags indicate spurious lines due to tissue folds. The positions of the sections, in millimeters from the rostral pole of the fixed brain, were as follows. Calretinin: 2.3, 3.5, 4.8, 6.7, 7.4, 7.9, 8.3, 9.6; calbindin: 2.9, 3.9, 4.8, 6.8, 7.4, 8.1, 8.6, 9.7.



**Figure 7.** High power views of ISH to chick brain for calretinin (*a-d*) and calbindin (*e-h*). Each area is shown in bright field (showing histology and some silver grains) and dark field (showing only silver grains). Examples of positive cells are indicated with solid arrowheads, negative cells with open arrowheads. Calretinin: (*a*) Imc; (*b*) VeL; (*c*) reticular formation; (*d*) nuclei solitarius (*S*) and vagi (*nX*). All the large neurons in *nX* are positive. On similar sections, a calbindin probe lit up more cells in *S* and none in *nX*. Calbindin: (*e*) neostriatum; (*f*) tectum, layers 4-8; (*g*) nucleus rotundus (*Rt*); (*h*) cerebellum: *M*, molecular layer; *G*, granule layer. The Purkinje cells are strongly positive. Bars, 50  $\mu$ m.





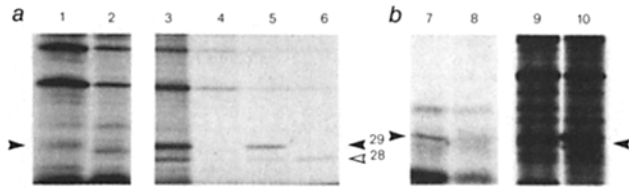
**Figure 8.** ISH to retina for calretinin (left) and calbindin (right). Dark-field views. PCL, pigment cell layer (which appears bright due to natural refringence); PRL, photoreceptor layer; INL, inner nuclear layer; GCL, ganglion cell layer. Asterisks indicate major positive layers. The calbindin section was printed at higher contrast and the signal apart from PRL was not always reproducible. Bar, 50  $\mu$ m.

was absent from kidney, and a similar protein was detected in brains of chicks, rats, and frogs (49). It is probably identical to the calcium-binding protein of 31–33 kD seen in chick brain by Anthony and Babitch (3). In bovine brain, it could correspond to one of several calcium-binding proteins in the 21–27-kD range including caligulin (44, 67–69).

### Function of CaBPs in Neurons

Calretinin is the third protein of this type found to be expressed in a restricted range of neurons, after calbindin and parvalbumin. It is the first for which neurons are the principal site of expression. All proteins of the superfamily are located in cytosol, and calbindin and parvalbumin immunoreactivities are detectable throughout many of the respective positive neurons, in dendrites and axons as well as cell bodies (5, 15, 29, 47, 54, 74). Although the antisera used by those authors did not detect immunoreactivity quite as extensively in the calretinin-containing neurons (e.g., nuclei isthmi magnocellularis, laminaris) as in the calbindin-containing neurons (e.g., cerebellum), this may be because of incomplete cross-reaction. In view of their close homology and mutually exclusive localization, it is likely that calbindin and calretinin perform similar functions in different neurons.

What this function might be is not yet known. Changes in calcium concentration are crucial to many dynamic processes in cells, and especially in neurons, where calcium is known to be involved in axonal transport, in releasing transmitters, and in transducing the responses to many stimuli. There are also gated calcium channels which can produce calcium action potentials in some neurons. The ubiquitous intracellular distribution of parvalbumin, calretinin, and calbindin would be consistent with a role in electrical transmission. This role could involve interacting with other proteins,

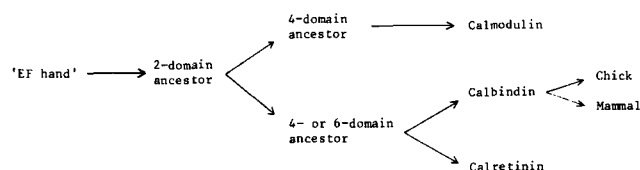


**Figure 9.** Identification of calretinin as a 29-kD polypeptide. (a) In vitro translation and immunoprecipitation. Poly(A)<sup>+</sup> RNA was translated in vitro and the products, with or without immunoprecipitation, were run on 9.5% SDS-PAGE. Lanes 1 and 2, unfractionated products (short exposure): (lane 1) retina; (lane 2) midbrain (mesencephalon plus diencephalon minus optic lobes; cerebellum RNA gave a similar picture). (Lanes 3–6) Products immunoprecipitated with antiserum against calbindin: (lane 3) retina immunoprecipitate; (lane 4) retina control (with normal rabbit serum instead of antiserum; controls on midbrain and cerebellum looked the same); (lane 5) midbrain immunoprecipitate; (lane 6) cerebellum immunoprecipitate. Calretinin (29 kD) is seen in lanes 1, 3, and 5; calbindin (28 kD) in lanes 3, 5, and 6. (b) Hybrid selection and in vitro translation. Products were run on 12% SDS-PAGE. (Lane 7) Products from retina RNA hybrid-selected using calretinin cDNA; (lane 8) control using unrelated DNA. Lanes 9 and 10, as lanes 1 and 2.

or facilitating calcium diffusion (10, 39), or providing short-term buffering for local calcium concentration in the cytosol. A calcium-buffering role in neurons has been suggested both for calbindin (5, 29, 30) and for parvalbumin (9, 13, 18), by analogy with evidence that they have calcium-buffering roles respectively in intestinal calcium absorption (60) and in muscle contraction (26, 48).

A possible function for such buffering may be to sharpen the timing of action potentials which depend in whole or in part on calcium fluxes, just as parvalbumin is thought to sharpen the timing of muscle contractions. Miller and Baimbridge (45) argued that such a function was consistent with the loss of calbindin immunoreactivity from the hippocampus of rats which have been rendered prone to seizures. Also, calbindin immunoreactivity is present in an electric fish, *Eigenmannia*, in all the neurons that fire in synchrony with the electric organ (11, 41). Calcium-buffering proteins could perhaps sharpen timing by shortening of action potentials in axons and shortening of transmitter release at presynaptic terminals.

Most relevant to the present study is the distribution of calbindin immunoreactivity in the auditory system of owls (12, 63). The primary auditory nuclei are angularis, which encodes sound intensity, and magnocellularis, which encodes timing. The magnocellularis neurons have action potentials locked to the phase of the sound waves and transmit bilaterally to nucleus laminaris, where timing differences as small as 10  $\mu$ s between the two ears are measured to build up an



**Figure 10.** Evolution of calretinin as inferred from sequence comparisons.

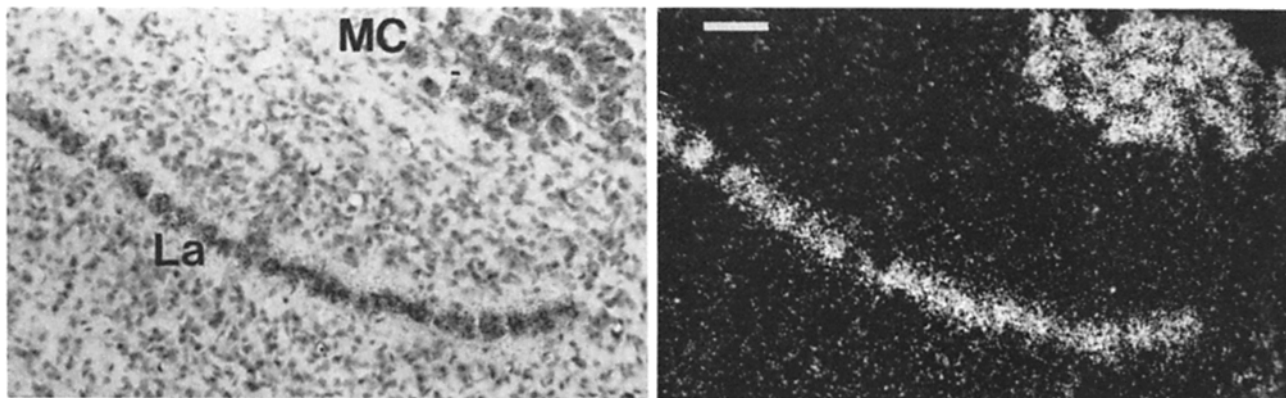


Figure 11. Calretinin ISH to auditory nuclei laminaris (La) and magnocellularis (MC): bright-field and dark-field views. This area contained no calbindin RNA. Bar, 50  $\mu$ m.

auditory map of space (35, 61). The neurons of nuclei magnocellularis and laminaris have high levels of calbindin immunoreactivity in owls, as in chicks (29), and this was suggested to be responsible for the temporal precision of their responses (12, 63). The present study shows that this immunoreactivity is in fact all due to calretinin. The auditory nuclei angularis, magnocellularis, and laminaris are among the most concentrated locations of calretinin RNA in the chick brain (Fig. 11). The nuclei further along the auditory pathway—superior olive, ventralis lemnisci lateralis, and inferior colliculus—contained immunoreactive fibers but not somata (63), and ISH confirms that they are largely negative for calretinin mRNA. Thus the preservation of phase-locked action potentials as far as the third neurons (in laminaris) of the auditory pathway may require the presence of calretinin.

In summary, calbindin and calretinin are generally expressed in different neurons throughout the brain, and many of these neurons are notable for the precise timing of their discharges. Similarly, parvalbumin is generally expressed in a third set of neurons, which share the property of rapid firing rate (9, 14). It is hoped that more precise definition of the various neurons expressing these calcium-binding proteins, and studies of the ionic fluxes in these neurons, will show whether these suggestions for functions are correct, and why three similar, though evolutionarily distinct, calcium-binding proteins should be expressed in different sets of neurons.

I am grateful to Eric Lawson and Peter Wilson for calbindin gene clones and antiserum; to Michel Goedert for some RNA samples; to Stephen Hunt for discussion and for use of equipment, to Catherine Carr for discussion about owls; and to Annette Bond for technical help.

I thank Sydney Brenner and the Medical Research Council for support.

Received for publication 2 April 1987.

## References

- Adelstein, R. S., and E. Eisenberg. 1980. Regulation and kinetics of the actin-myosin-ATP interaction. *Annu. Rev. Biochem.* 49:921-956.
- Akam, M. E. 1983. The location of Ultrabithorax transcripts in *Drosophila* tissue sections. *EMBO (Eur. Mol. Biol. Organ.) J.* 2:2075-2084.
- Anthony, F. A., and J. A. Babitch. 1985. Calcium-binding proteins in whole brain and synaptic subfractions. *Brain Res.* 345:124-131.
- Babu, Y. S., J. S. Sack, T. J. Greenhough, C. E. Bugg, A. R. Means, and W. J. Cook. 1985. Three-dimensional structure of calmodulin. *Nature (Lond.)* 315:37-40.
- Baimbridge, K. G., and J. J. Miller. 1982. Immunohistochemical localization of calcium-binding protein in the cerebellum, hippocampal formation and olfactory bulb of the rat. *Brain Res.* 245:223-229.
- Baimbridge, K. G., J. J. Miller, and C. O. Parkes. 1982. Calcium-binding protein distribution in the rat brain. *Brain Res.* 239:519-525.
- Baron, G., J. Demaille, and E. Dutruge. 1975. The distribution of parvalbumins in muscle and other tissues. *FEBS (Fed. Eur. Biochem. Soc.) Lett.* 56:156-160.
- Biggin, M. D., T. J. Gibson, and G. F. Huang. 1983. Buffer gradient gels and <sup>35</sup>S label as an aid to rapid DNA sequence determination. *Proc. Natl. Acad. Sci. USA.* 80:3963-3965.
- Braun, K., H. Scheich, M. Schachner, and C. W. Heizmann. 1985. Distribution of parvalbumin, cytochrome oxidase activity, and <sup>14</sup>C-2-deoxyglucose uptake in the brain of the zebra finch. *Cell Tissue Res.* 240:101-127.
- Bronner, F., D. Pansu, and W. D. Stein. 1986. An analysis of intestinal calcium transport across the rat intestine. *Am. J. Physiol.* 250(G):561-569.
- Carr, C. E. 1987. Time coding in electric fish and barn owls. *Brain Behav. Evol.* In press.
- Carr, C., N. Brecha, and M. Konishi. 1985. Organization of nucleus laminaris in the barn owl. *Soc. Neurosci. Abstr.* 11:735.
- Celio, M. R. 1986. Parvalbumin in the most  $\gamma$ -aminobutyric acid-containing neurons of the rat cerebral cortex. *Science (Wash. DC)* 231:995-997.
- Celio, M. R. 1987. Neuroanatomy of CaBPs. In *Proceedings of the Fifth International Symposium on Calcium Binding Proteins in Health and Disease*. Academic Press, Inc., New York. In press.
- Celio, M. R., and C. W. Heizmann. 1981. Calcium-binding protein parvalbumin as a neuronal marker. *Nature (Lond.)* 293:300-301.
- Celio, M. R., L. Schäfer, J. H. Morrison, A. R. Norman, and F. E. Bloom. 1986. Calbindin immunoreactivity alternates with cytochrome c oxidase-rich zones in some layers of the primate visual cortex. *Nature (Lond.)* 323:715-717.
- Endo, T., S. Kobayashi, and T. Onaya. 1985. Parvalbumin in rat cerebrum, cerebellum and retina during postnatal development. *Neurosci. Lett.* 60:279-282.
- Endo, T., K. Takazawa, S. Kobayashi, and T. Onaya. 1986. Immunohistochemical and immunohistochemical localization of parvalbumin in rat nervous tissues. *J. Neurochem.* 46:892-893.
- Evan, G. I., T. Alderson, L. Croft, and E. S. Lennox. 1983. A monoclonal anti-HLA antibody recognises a mouse tumour-associated antigen. *Eur. J. Immunol.* 13:160-166.
- Feldman, S. C., and S. Christakos. 1983. Vitamin D-dependent CaBP in rat brain: biochemical and immunocytochemical characterization. *Endocrinology.* 112:290-302.
- Ferrari, S., R. Battini, A. Leone, S. Ferrari, G. Torelli, and B. Barbiroli. 1984. Isolation of a cDNA clone containing a sequence complementary to the intestinal calcium-binding protein of the chick. *Gene (Amst.)* 30:233-236.
- Garcia-Segura, L. M., D. Baetens, J. Roth, A. W. Norman, and L. Orci. 1984. Immunohistochemical mapping of CaBP immunoreactivity in the rat CNS. *Brain Res.* 296:75-86.
- Garnier, J., D. J. Osguthorpe, and B. Robson. 1978. Analysis of the accuracy and implications of simple methods for predicting the secondary structure of globular proteins. *J. Mol. Biol.* 120:97-120.
- Gerfen, C. R., K. G. Baimbridge, and J. J. Miller. 1985. The neostriatal mosaic: compartmental distribution of calcium-binding protein and parvalbumin in the basal ganglia of the rat and monkey. *Proc. Natl. Acad. Sci. USA.* 82:8780-8784.
- Hatakenaka, S., H. Kiyama, M. Tohyama, and N. Miki. 1985. Immunohistochemical localisation of chick retinal 24 kd protein (Visinin) in various vertebrate retinae. *Brain Res.* 331:209-215.
- Heizmann, C. W., M. W. Berchtold, and A. M. Rowlerson. 1982. Correlation of parvalbumin concentration with relaxation speed in mammalian

- muscles. *Proc. Natl. Acad. Sci. USA.* 79:7243-7247.
27. Hunziker, W. 1986. The 28-kDa vitamin D-dependent CaBP has a six-domain structure. *Proc. Natl. Acad. Sci. USA.* 83:7578-7582.
  28. Hunziker, W., P. D. Siebert, M. W. King, P. Stucki, A. Dugaiczky, and A. W. Norman. 1983. Molecular cloning of a vitamin D-dependent calcium-binding protein mRNA sequence from chick intestine. *Proc. Natl. Acad. Sci. USA.* 80:4228-4232.
  29. Jande, S. S., L. Maler, and D. E. M. Lawson. 1981. Immunohistochemical mapping of vitamin D-dependent calcium binding protein in brain. *Nature (Lond.)*. 294:765-767.
  30. Jande, S. S., S. Tolnai, and D. E. M. Lawson. 1981. Immunohistochemical localization of vitamin D-dependent calcium-binding protein in duodenum, kidney, uterus and cerebellum of chickens. *Histochemistry*. 71: 99-116.
  31. Karten, H. J., and W. Hodos. 1967. A stereotaxic atlas of the brain of the pigeon. Johns Hopkins Press, Baltimore, MD. 193 pp.
  32. King, M. W., and A. R. Norman. 1986. Analysis of the mRNA coding for the chick vitamin D-induced calbindin and its regulation by 1,25-dihydroxyvitamin D<sub>3</sub>. *Arch. Biochem. Biophys.* 248:612-619.
  33. Kiyama, H., K. Takami, S. Hatakenaka, I. Nomura, M. Tohyama, and N. Miki. 1985. Localization of chick retinal 24 kD protein (Visinin)-like immunoreactivity in the rat lower brain stem. *Neuroscience*. 14:547-556.
  34. Klee, C. B., T. H. Crouch, and P. G. Richman. 1980. Calmodulin. *Annu. Rev. Biochem.* 49:489-515.
  35. Knudsen, E. I. 1981. The hearing of the barn owl. *Sci. Am.* 245:82-91.
  36. Kretsinger, R. H. 1976. Calcium-binding proteins. *Annu. Rev. Biochem.* 45:239-266.
  37. Kretsinger, R. H. 1980. Structure and evolution of calcium-modulated proteins. *CRC Crit. Rev. Biochem.* 8:119-138.
  38. Kretsinger, R. H., and C. E. Nockolds. 1973. Carp muscle calcium-binding protein. II. Structure determination and general description. *J. Biol. Chem.* 248:3313-3326.
  39. Kretsinger, R. H., J. E. Mann, and J. G. Simmons. 1982. Model of the facilitated diffusion of calcium by the intestinal CaBPs. In *Vitamin D: Chemical, Biochemical and Clinical Endocrinology of Calcium Metabolism*. A. W. Norman, K. Schaefer, D. V. Herrath, and H.-G. Grigoleit, editors. de Gruyter, Berlin. 233-248.
  40. Legrand, C., M. Thomasset, C. O. Parkes, M. C. Clavel, and A. Rabie. 1983. Calcium-binding protein in the developing rat cerebellum. *Cell Tissue Res.* 233:389-402.
  41. Maler, L., S. S. Jande, and D. E. M. Lawson. 1984. Localization of vitamin D-dependent CaBP in the electrosensory and electromotor system of high-frequency gymnotid fish. *Brain Res.* 301:166-170.
  42. Maniatis, T., E. F. Fritsch, and J. Sambrook. 1982. *Molecular cloning: a laboratory manual*. Cold Spring Harbor Press, Cold Spring Harbor, NY. 545 pp.
  43. Maruyama, K., T. Mikawa, and S. Ebashii. 1984. Detection of calcium-binding proteins by [<sup>45</sup>Ca] autoradiography on nitrocellulose membrane after SDS gel electrophoresis. *J. Biochem.* 95:511-519.
  44. McDonald, J. R., and M. P. Walsh. 1985. Ca<sup>2+</sup>-binding proteins from bovine brain including a potent inhibitor of protein kinase C. *Biochem. J.* 232:559-567.
  45. Miller, J. J., and K. G. Baimbridge. 1983. Biochemical and immunohistochemical correlates of kindling-induced epilepsy: role of CaBP. *Brain Res.* 278:322-326.
  46. Norman, A. W., J. Roth, and L. Orci. 1982. The vitamin D endocrine system: steroid metabolism, hormone receptors, and biological response (CaBPs). *Endocr. Rev.* 3:331-366.
  47. Pasteels, J. L., R. Pochet, L. Surardt, C. Hubeau, M. Chirnoaga, M. Parmentier, and D. E. M. Lawson. 1986. Ultrastructural localization of brain "vitamin D-dependent" CaBPs. *Brain Res.* 384:294-303.
  - 47a. Pasteels, J. L., B. N. Miki, S. Hatakenaka, and R. Pochet. 1987. Immunobiochemical cross-reactivity and electrophoretic comigration between calbindin D-27 kDa and visinin. *Brain Res.* 412:107-113.
  48. Pechere, J-F., J. Derancourt, and J. Haiech. 1977. The participation of parvalbumins in the activation-relaxation cycle of vertebrate fast skeletal muscle. *FEBS (Fed. Eur. Biochem. Soc.) Lett.* 75:111-114.
  49. Pochet, R., M. Parmentier, D. E. M. Lawson, and J. L. Pasteels. 1985. Rat brain synthesizes two 'vitamin D-dependent' calcium-binding proteins. *Brain Res.* 345:251-256.
  50. Rabie, A., M. Thomasset, C. O. Parkes, and M. C. Clavel. 1985. Immunocytochemical detection of 28000-MW calcium-binding protein in horizontal cells of the rat retina. *Cell Tissue Res.* 240:493-496.
  51. Ricciardi, R. P., J. S. Miller, and B. E. Roberts. 1979. Purification and mapping of specific mRNAs by hybridization-selection and cell-free translation. *Proc. Natl. Acad. Sci. USA.* 76:4927-4931.
  52. Rogers, J. H., and S. P. Hunt. 1987. Carbonic anhydrase II mRNA in neurons and glia of chick brain: mapping by in situ hybridization. *Neuroscience*. In press.
  53. Roman, A., B. Pasteels, and R. Pochet. 1987. Calbindin-D immunoreactivity in retinal cones and pineal photosensitive cells. In *Proceedings of the Fifth International Symposium on Calcium-Binding Proteins in Health and Disease*. Academic Press Inc., New York. In press.
  54. Roth, J., D. Baetens, A. W. Norman, and L-M. Garcia-Segura. 1981. Specific neurons in chick central nervous system stain with an antibody against chick intestinal vitamin D-dependent calcium-binding protein. *Brain Res.* 222:452-457.
  55. Rütther, U., and B. Müller-Hill. 1983. Easy identification of cDNA clones. *EMBO (Eur. Mol. Biol. Organ.) J.* 2:1791-1794.
  56. Sanger, F., S. Nicklen, and A. R. Coulson. 1977. DNA sequencing with chain-terminating inhibitors. *Proc. Natl. Acad. Sci. USA.* 74:5463-5467.
  57. Sans, A., B. Etchecopar, A. Brehier, and M. Thomasset. 1986. Immunocytochemical detection of vitamin D-dependent calcium-binding protein (CaBP-28K) in vestibular sensory hair cells and vestibular ganglion neurones of the cat. *Brain Res.* 364:190-194.
  58. Schreiner, D. S., S. S. Jande, and D. E. M. Lawson. 1985. Target cells of vitamin D in the vertebrate retina. *Acta Anat.* 121:153-162.
  59. Southern, E. M. 1975. Detection of specific sequences among DNA fragments separated by gel electrophoresis. *J. Mol. Biol.* 98:503-517.
  60. Spencer, R., M. Charman, P. Wilson, and E. Lawson. 1976. Vitamin D-stimulated intestinal calcium absorption may not involve calcium-binding protein directly. *Nature (Lond.)*. 263:161-163.
  61. Sullivan, W. E., and M. Konishi. 1986. Neural map of interaural phase difference in the owl's brainstem. *Proc. Natl. Acad. Sci. USA.* 83:8400-8404.
  62. Takagi, T., M. Nojiri, and K. Konishi. 1986. Amino acid sequence of vitamin D-dependent calcium-binding protein from bovine cerebellum. *FEBS (Fed. Eur. Biochem. Soc.) Lett.* 201:41-45.
  63. Takahashi, T., C. E. Carr, N. Brecha, and M. Konishi. 1987. CaBP immunoreactivity labels the terminal field of nucleus laminaris of the barn owl. *J. Neurosci.* 7:1843-1856.
  64. Takahashi-Iwanaga, H., H. T. Kondo, T. Yamakuni, and Y. Takahashi. 1986. An immunohistochemical study on the ontogeny of cells immunoreactive for Spot 35 protein, a novel Purkinje cell-specific protein, in the rat cerebellum. *Dev. Brain Res.* 29:225-231.
  65. Taylor, A. N. 1974. Chick brain calcium-binding protein: Comparison with intestinal vitamin D-induced calcium-binding protein. *Arch. Biochem. Biophys.* 161:100-108.
  66. Thomas, P. S. 1980. Hybridization of denatured RNA and small DNA fragments transferred to nitrocellulose. *Proc. Natl. Acad. Sci. USA.* 77: 5201-5205.
  67. Waisman, D. M., J. Muranyi, and M. Ahmed. 1983. Identification of a novel calcium binding protein from bovine brain. *FEBS (Fed. Eur. Biochem. Soc.) Lett.* 164:80-84.
  68. Waisman, D. M., M. Toduda, S. J. M. Morys, L. T. Buckland, and T. Clark. 1985. Identification of bovine brain Ca<sup>2+</sup>-binding proteins. *Biochem. Biophys. Res. Commun.* 128:1138-1144.
  69. Walsh, M. P., K. A. Valentine, P. K. Ngai, C. A. Carruthers, and M. D. Hollenberg. 1984. Ca<sup>2+</sup>-dependent hydrophobic-interaction chromatography. *Biochem. J.* 224:117-127.
  70. Wasserman, R. H., and A. N. Taylor. 1966. Vitamin D<sub>3</sub>-induced CaBP in chick intestinal mucosa. *Science (Wash. DC)*. 152:791-793.
  71. Wilson, P. W., M. Harding, and D. E. M. Lawson. 1985. Putative amino acid sequence of chick calcium-binding protein deduced from a complementary DNA sequence. *Nucl. Acids Res.* 13:8867-8881.
  72. Yamakuni, T., R. Kuwano, S. Odani, N. Kiki, Y. Yamaguchi, and Y. Takahashi. 1986. Nucleotide sequence of cDNA to mRNA for a cerebellar CaBP, spot 35 protein. *Nucl. Acids Res.* 14:6768.
  73. Youngren, O. M., and R. E. Phillips. 1978. A stereotaxic atlas of the brain of the three-day-old domestic chick. *J. Comp. Neurol.* 181:567-600.
  74. Zuschratter, W., H. Scheich, and C. Heizmann. 1985. Ultrastructural localization of the CaBP parvalbumin in neurons of the song system of the zebra finch, *Peophila guttata*. *Cell Tissue Res.* 241:77-83.