


RESEARCH ARTICLE

Open Access



# A prospective cohort study on the pharmacokinetics of nivolumab in metastatic non-small cell lung cancer, melanoma, and renal cell cancer patients

Daan P. Hurkmans<sup>1,2\*</sup> , Edwin A. Basak<sup>1</sup>, Tanja van Dijk<sup>1</sup>, Darlene Mercieca<sup>2</sup>, Marco W. J. Schreurs<sup>3</sup>, Annemarie J. M. Wijkhuijs<sup>3</sup>, Sander Bins<sup>1</sup>, Esther Oomen-de Hoop<sup>1</sup>, Reno Debets<sup>1</sup>, Markus Joerger<sup>4</sup>, Arlette Odink<sup>5</sup>, Astrid A. M. van der Veldt<sup>1,5</sup>, Cor H. van der Leest<sup>6</sup>, Joachim G. J. V. Aerts<sup>2</sup>, Ron H. J. Mathijssen<sup>1</sup> and Stijn L. W. Koolen<sup>1,7</sup>

## Abstract

**Background:** Nivolumab is administered in a weight-based or fixed-flat dosing regimen. For patients with non-small cell lung cancer (NSCLC), a potential exposure-response relationship has recently been reported and may argue against the current dosing strategies. The primary objectives were to determine nivolumab pharmacokinetics (PK) and to assess the relationship between drug clearance and clinical outcome in NSCLC, melanoma, and renal cell cancer (RCC).

**Methods:** In this prospective observational cohort study, individual estimates of nivolumab clearance and the impact of baseline covariates were determined using a population-PK model. Clearance was related to best overall response (RECISTv1.1), and stratified by tumor type.

**Results:** Two-hundred-twenty-one patients with metastatic cancer receiving nivolumab-monotherapy were included of whom 1,715 plasma samples were analyzed. Three baseline parameters had a significant effect on drug clearance and were internally validated in the population-PK model: gender, BSA, and serum albumin. Women had 22% lower clearance compared to men, while the threshold of BSA and albumin that led to > 20% increase of clearance was > 2.2m<sup>2</sup> and < 37.5 g/L, respectively. For NSCLC, drug clearance was 42% higher in patients with progressive disease (mean: 0.24; 95% CI: 0.22–0.27 L/day) compared to patients with partial/complete response (mean: 0.17; 95% CI: 0.15–0.19 L/day). A similar trend was observed in RCC, however, no clearance-response relationship was observed in melanoma.

**Conclusions:** Based on the first real-world population-PK model of nivolumab, covariate analysis revealed a significant effect of gender, BSA, and albumin on nivolumab clearance. A clearance-response relationship was observed in NSCLC, with a non-significant trend in RCC, but not in melanoma. Individual pharmacology of nivolumab in NSCLC appears important and should be prospectively studied.

**Keywords:** Nivolumab, PD-1, Pharmacokinetics, Solid tumors

\* Correspondence: [d.hurkmans@erasmusmc.nl](mailto:d.hurkmans@erasmusmc.nl)

<sup>1</sup>Department of Medical Oncology, Erasmus MC Cancer Institute, Erasmus University Medical Center, PO Box 2040, 3000 CA Rotterdam, The Netherlands

<sup>2</sup>Department of Pulmonology, Erasmus MC Cancer Institute, Erasmus University Medical Center, PO Box 2040, 3000 CA Rotterdam, The Netherlands

Full list of author information is available at the end of the article



## Background

Nivolumab is a human immunoglobulin G4 (IgG4) monoclonal antibody (MoAb) that inhibits the interaction between the co-inhibitory immune receptor programmed death-1 (PD-1) and its ligands, PD-L1 and PD-L2. Nivolumab monotherapy has been approved for several indications, including advanced and metastatic melanoma [1], advanced clear-cell renal cell cancer (RCC), and metastatic non-small-cell lung cancer (NSCLC) [2, 3]. IgG4 MoAbs, such as nivolumab, are characterized by a relatively high molecular mass, leading to a slow distribution in tissues [4]. The elimination of nivolumab is very much alike endogenous immunoglobulins with a half-life of approximately 27 days [5] and a steady-state at 12 weeks.

In current clinical practice, nivolumab is administered in different schedules including 3 mg/kg Q2W, 240 mg flat dosing Q2W, and 480 mg flat dosing Q4W. The dosing of 3 mg/kg Q2W --approved by the Food and Drug Administration (FDA) in 2014 -- was based on dose-finding phase I/II studies, showing tolerability for the wide range of 0.1 to 10 mg/kg, and showing activity at 0.1 mg/kg Q2W and higher [6]. However, approval of nivolumab flat dosing (in March 2018), however, was solely based on *in silico* studies: selected flat doses were based on equivalence with initial dosing at median body weight of 80 kg. Population pharmacokinetic (PPK) modeling of data from approximately 100 clinical trials was used to simulate nivolumab concentrations and to compare flat dosing regimens (240 mg Q2W, 480 mg Q4W) with 3 mg/kg Q2W dosing [7, 8]. It is noteworthy that a previous model-based PPK analysis resulted in significant but not clinically relevant covariate effects, of which gender and body weight were the most important [9].

Few studies have assessed dose-response (D-R) and exposure-response (E-R) relationships of nivolumab. In a quantitative analysis [10] of a phase 1b dose-escalation study in 129 patients with NSCLC [6], a positive D-R relationship was found at 3 or 10 mg/kg versus 1 mg/kg. In addition, trough concentrations at steady state were correlated with objective response (OR) at 0.1 to 3 mg/kg in another cohort of patients with NSCLC [10]. A D-R relationship could not be demonstrated in patients with melanoma ( $n = 107$ ) nor RCC ( $n = 34$ ) at this dose range, but was only observed at 0.1 up to 1 mg/kg. In 221 melanoma patients treated in phase 1b [6] and 3 studies [11], absence of an E-R relationship was confirmed utilizing PPK modeling by relating the time-averaged nivolumab concentration to OR [12].

In a recent real-world study performed by our group, a steep positive E-R relationship of nivolumab was found for NSCLC ( $n = 76$ ). Here, patients with a partial response (PR) had significant higher mean trough levels during therapy than patients with progressive disease

(PD), and high exposure correlated significantly with better overall survival (OS) [13].

The present study addresses the PK of nivolumab in a real-world setting. The main objectives were 1) to define patient parameters influencing nivolumab pharmacokinetics and 2) to describe the relationship of systemic nivolumab clearance with objective response in patients with NSCLC, melanoma, and RCC. Secondary objectives include an exploratory analysis in regard to immune-related adverse events (irAEs), progression-free survival (PFS), and OS.

## Methods

### Patients and study design

Patients with advanced cancer who were treated with nivolumab between 20th April 2016 and 30th October 2018 at the Erasmus MC Cancer Institute (Rotterdam, The Netherlands) and the Amphia Hospital (Breda, The Netherlands) were included prospectively in this study (Dutch Trial Register number NTR7015/ NL6828), allowing for serial blood sampling during standard of care nivolumab treatment. The study was approved by the independent ethics committee (MEC 16–011) and all patients provided written informed consent. Blood samples were drawn prior to every 2-weekly nivolumab to measure trough concentrations. For those patients who gave extensive informed consent, intensive sampling was performed between the first and second administration of nivolumab. Patient characteristics and clinical data were prospectively collected.

### Pharmacokinetic measurements

For all patients ( $n = 221$ ), nivolumab trough concentrations were determined for a selection of serum samples until end of treatment. Nivolumab serum concentrations were determined by an in-house developed and validated enzyme-linked immune sorbent assay (ELISA, as described previously [14]). Serum samples were selected to determine trough concentrations prior to each administration for the first 12 weeks, thereafter at evenly 12-weekly intervals until the end of treatment. For some patients ( $n = 3$ ), intensive sampling allowed to determine nivolumab concentrations at 2 h, 2 days, and 1 week after the first administration in order to estimate a best-fit compartmental model.

### Data collection

The following baseline patient parameters were collected: gender, race, tumor type, performance status, age, body weight, body surface area (BSA), total volumetric tumor burden, serum creatinine, renal function, total serum protein, serum albumin, lactate dehydrogenase (LD) and leucocyte count. Performance status was

determined according to Eastern Cooperative Oncology Group [15]. For NSCLC patients, weight loss was recorded and defined as a percentage of 2.5 or higher [16] during a period of 3 months prior to the first administration of nivolumab. BSA was calculated by the Mosteller equation [17]. Renal function was estimated using the Chronic Kidney Disease Epidemiology Collaboration (CKD-EPI) formula [18].

For a subgroup of NSCLC patients ( $n = 30$ ), total volumetric tumor burden at baseline was assessed by a thoracic radiologist (A.O.) in a blinded manner using IntelliSpace Portal version 8 (Philips Medical Systems Nederland B.V., The Netherlands). Only primary tumor lesions with a long axis  $> 10$  mm, lymph nodes with a short axis  $\geq 15$  mm and metastatic lesions with a long axis  $\geq 10$  mm were included. Total volumetric tumor burden was not assessed if the primary tumor was not identifiable or its boundaries could not be defined, e.g. due to surrounding atelectasis or radiation effects.

Best overall response (BOR) was assessed according to Response Evaluation Criteria in Solid Tumors version 1.1 (RECIST v1.1, [19]). A minimum duration of 90 days for stable disease (SD) was required. Confirmation of PR or complete response (CR) was not required. PFS was defined as the time from the first administration of nivolumab until PD or death due to any cause, whichever occurred first. OS was defined as the time from the first administration of nivolumab until death due to any cause. IrAEs were registered from start of treatment until end of follow-up according to National Cancer Institute Common Terminology Criteria for Adverse Events version 4.03 (NCI-CTCAE v4.03). Data cut-off for these analyses was set at 1st of January 2019.

### Pharmacokinetic modeling

To determine patient parameters influencing nivolumab PK (primary objective 1), nonlinear mixed effect modeling software, NONMEM (version 7.4; ICON, Development Solutions, MD) was used to analyze the PK data. The first-order conditional estimation method with interaction was used for parameter estimation. Pirana software version 2.9.7 (Pirana, [www.pirana-software.com](http://www.pirana-software.com)) was used as a modeling environment, and data were further handled in the latest R desktop version 1.1.453 (R-project, [www.rproject.org](http://www.rproject.org)).

A two-compartment PPK model was developed to best fit the nivolumab pharmacokinetics with individual estimates of systemic drug clearance (schematically shown in Additional file 1: Figure S1). Two-compartment PPK models have previously been described to best fit pharmacokinetics of monoclonal antibodies in blood [20]. Since we had only trough PK levels available, modelling of nivolumab distribution was challenging. Hence, we assumed that the central volume (V1) equals

the peripheral volume of distribution (V2) as previously described for nivolumab [21].

Between-subject variability (BSV) was tested for clearance and distribution volume. The inclusion of BSV was evaluated according to the change of objective function value (OFV,  $P < 0.05$ ) and shrinkage. A shrinkage value below 25% was considered acceptable [22].

BSV was modelled according to Eq. 1:

$$P_i = P \cdot \exp(\eta_i) \quad (1)$$

where  $P_i$  represents the parameter estimate for each individual patient ( $i$ ),  $P$  represents the typical population parameter estimate and  $\eta_i$  represents BSV distributed according to  $N(0, \omega^2)$ .

Residual errors were described by a proportional error model (Eq. 2):

$$C_{obs,ij} = C_{pred,ij} \times (1 + \varepsilon_{p,ij}) \quad (2)$$

where  $C_{obs,ij}$  and  $C_{pred,ij}$  represent the observed and predicted concentration for the ( $i$ ) th subject and the ( $j$ ) th measurement, respectively.  $\varepsilon_{p,ij}$  represents the proportional error distributed according to  $N(0, \sigma^2)$ .

Covariates were added to the PPK model (initial model  $M_i$ ) to obtain a final model (final model  $M_f$ ). Potential covariates were selected based on clinical plausibility and tested by a stepwise approach with forward inclusion (threshold  $p < 0.01$ ) and backward elimination (threshold  $p < 0.005$ , [23–25]). The covariates were tested on clearance (CL) by multiplying a typical clearance value ( $CL_{TV}$ ) with a factor for categorical ( $Factor_{cat}$ ) and continuous ( $Factor_{con}$ ) covariates (Eq. 3).

$$CL = CL_{TV} \times Factor_{cat} \times Factor_{con} \quad (3)$$

Categorical covariates were scored as '0' or '1'. Equation 4 was applied for patients who scored '1' in which  $\theta_x$  represents the covariate effect size estimate. Continuous variables were tested with the PK model using Eq. 5 where  $cov$  represents the covariate measure,  $cov_{median}$  the population median of the covariate, and  $\theta_y$  the covariate effect measure.

$$Factor_{cat} = 1 + \theta_x \quad (4)$$

$$Factor_{con} = \left( \frac{cov}{cov_{median}} \right)^{\theta_y} \quad (5)$$

### Data analysis

Descriptive statistics included frequency and the median with range and inter-quartile range (IQR) of covariates. To analyze the relationship of systemic nivolumab clearance, which is inversely proportional to drug exposure, with treatment outcome (primary objective 2), patients were stratified by tumor type (NSCLC, melanoma, and

RCC) and ranked according to BOR. To avoid potential confounding from covariates that may correlate with response, the initial model  $M_i$  was used to compare individual drug clearance estimates between different BOR groups (PD, SD, PR/CR). Equal variances among groups were assessed with Levene's test, normal distribution was assessed using the skewness and kurtosis. Comparison of individual drug clearance was assessed for the three BOR groups by ANOVA and post-hoc independent samples t-tests.

To investigate the relationship of systemic nivolumab clearance with toxicity, patients were stratified by tumor type, grouped based on the occurrence of grade 0–2 or grade  $\geq 3$  irAEs, and analyzed by independent samples t-test. To relate systemic nivolumab clearance to PFS and OS, NSCLC patients were grouped into quartiles: patients with low clearance (Q1) were compared with patients with high clearance (Q4) by the Kaplan-Meier approach. The relative risk of death or death/progression was assessed by the Cox proportional hazards model. Additional patient characteristics were included grouped by clearance quartile (Q1–Q4). A two-sided  $p$ -value  $< 0.05$  was considered significant.

Post-processing of NONMEM generated data and statistical analysis was conducted with R and IBM SPSS Statistics version 24.0.0.1 (Chicago, IL).

## Results

A total of 221 nivolumab-treated cancer patients were included in the PPK model ( $M_i$  and  $M_f$ ): NSCLC (71.4%), melanoma (21.7%), RCC (6.3%), and one mesothelioma patient. The patient characteristics are shown in Table 1. One patient received ipilimumab after initial treatment with nivolumab monotherapy, and was excluded from clearance-response, clearance-survival and clearance-toxicity analysis. Dosing was based on body weight (3 mg/kg Q2W), with an average dose of 240 mg per administration (IQR: 200–280 mg). The average number of nivolumab cycles administered per patient was 12. The overall median follow up time (from first administration of nivolumab to censoring) was 338 days (IQR: 145–487 days). A total of 1,715 measurements were available for PK analysis (average of 8 measurements per patient). Examples of nivolumab measurements and administrations over time from two patients, one with and one without dose delays, are shown in Fig. 1.

### Gender, BSA and albumin influence nivolumab pharmacokinetics

Continuous and categorical clinical covariates were incorporated in the final two-compartment model by forward inclusion and backward elimination (Additional file 1: Table S1), resulting in four covariates reaching the

significance threshold, namely: gender, BSA, albumin, and body weight. BSA had a higher impact on nivolumab pharmacokinetics than weight; the latter being rejected by the backward elimination step. The parameter estimates according to the  $M_f$  are shown in Table 2 including the results of internal validation. The NONMEM model can be found Additional file 1: Appendix 1. Inter-individual variance was reduced from 37% (as indicated by  $M_i$ ) to 30.7% by incorporating these three covariates. Women had 22% lower clearance than men, as evidenced by a mean clearance of 0.185 and 0.237 L/day, respectively. The thresholds of BSA and baseline serum albumin that led to an estimated  $> 20\%$  increase of systemic nivolumab clearance were  $> 2.2 \text{ m}^2$  (BSA) and  $< 37.5 \text{ g/L}$  (albumin), respectively (Fig. 2).

### Correlation between drug clearance and clinical outcome

Clinical outcome and occurrence of toxicity are shown in Additional file 1: Table S2. The initial model ( $M_i$ ) was used to investigate the relationship between individual clearance of nivolumab and clinical response or toxicity in NSCLC, melanoma, and RCC (Fig. 3b–d). A negative clearance-response relationship was found in patients with NSCLC ( $p < 0.001$ ), as a significantly higher clearance of 41.8% was observed in patients with PD (mean: 0.244; 95% CI: 0.223–0.265 L/day) compared to patients with PR/CR (0.172; 0.152–0.192). Patients with SD were identified as an intermediate group (0.211; 0.193–0.228). A non-significant trend similarly to NSCLC was observed in RCC ( $p = 0.054$ ). Of note, no clearance-response relationship was observed in melanoma ( $p = 0.987$ ). A clearance-irAE relationship was not found for NSCLC, melanoma, or RCC (respectively  $p = 0.28$ ,  $p = 0.84$  and  $p = 0.92$ ; Additional file 1: Figure S2B–D), nor for all three tumor types pooled together ( $p = 0.31$ ; Additional file 1: Figure S2A).

There was no significant difference in drug clearance between tumor types ( $p = 0.47$ ; Fig. 3a), corresponding with above-mentioned PPK modeling where tumor type as a categorical covariate did not reach the significance threshold. Notably, when patients with NSCLC were grouped by clearance, the lowest quartile of clearance was significantly associated with better PFS (HR 0.32; 95% CI: 0.18–0.57,  $p < 0.001$ ) and OS (HR: 0.25; 95% CI: 0.12–0.51,  $p < 0.001$ ) compared to patients with the highest quartile of clearance (Fig. 4a–b). Additionally, the patient characteristics grouped by quartile of clearance are shown in Additional file 1: Table S3.

## Discussion

In the current study, we showed that gender, baseline BSA, and serum albumin had a significant effect on the systemic clearance of nivolumab in the two compartment

**Table 1** Patient characteristics

Demographic Covariates	Categorical	n (%)
Tumor Type		
NSCLC all types		158 (71.5)
Non-Squamous		96
Squamous		42
Unknown NSCLC type		20
Melanoma		48 (21.7)
RCC		14 (6.3)
Mesothelioma		1 (0.5)
Treatment		
Nivolumab monotherapy (3 mg/kg Q2W)		221 (100)
Gender		
Male		138 (62.4)
Female		83 (37.6)
Race		
Caucasian		195 (88.2)
Other		5 (2.3)
Unknown		21 (9.5)
WHO Performance Status		
0		63 (28.5)
1		103 (46.6)
2		4 (1.8)
Unknown		51 (23.1)
Weight loss prior to start therapy (only in NSCLC)		
Yes		36 (16.3)
No		81 (36.7)
Unknown		104 (47.1)
Demographic and Laboratory Covariates		
	Continuous	Median (IQR) n (%)
Age (yr)		65 (59–71) 221 (100)
Body Weight (kg)		78.5 (70–88) 220 (99.5)
Body Surface Area (m <sup>2</sup> )		1.95 (1.81–2.09) 205 (93)
Tumor Burden 3D (cm <sup>3</sup> ; only in NSCLC)		18.6 (66–98) 25 (11)
Creatinine (μmol/L)		81 (66–98) 203 (92)
CKD (mL/min)		81 (62–90) 203 (92)
Total Protein (g/L)		73 (69–90) 163 (74)
Albumin (g/L)		42 (42–45) 174 (79)
LD (U/L)		215 (183–275) 196 (89)
Leucocytes (10 <sup>9</sup> cells/L)		7.7 (6.3–10.2) 203 (92)

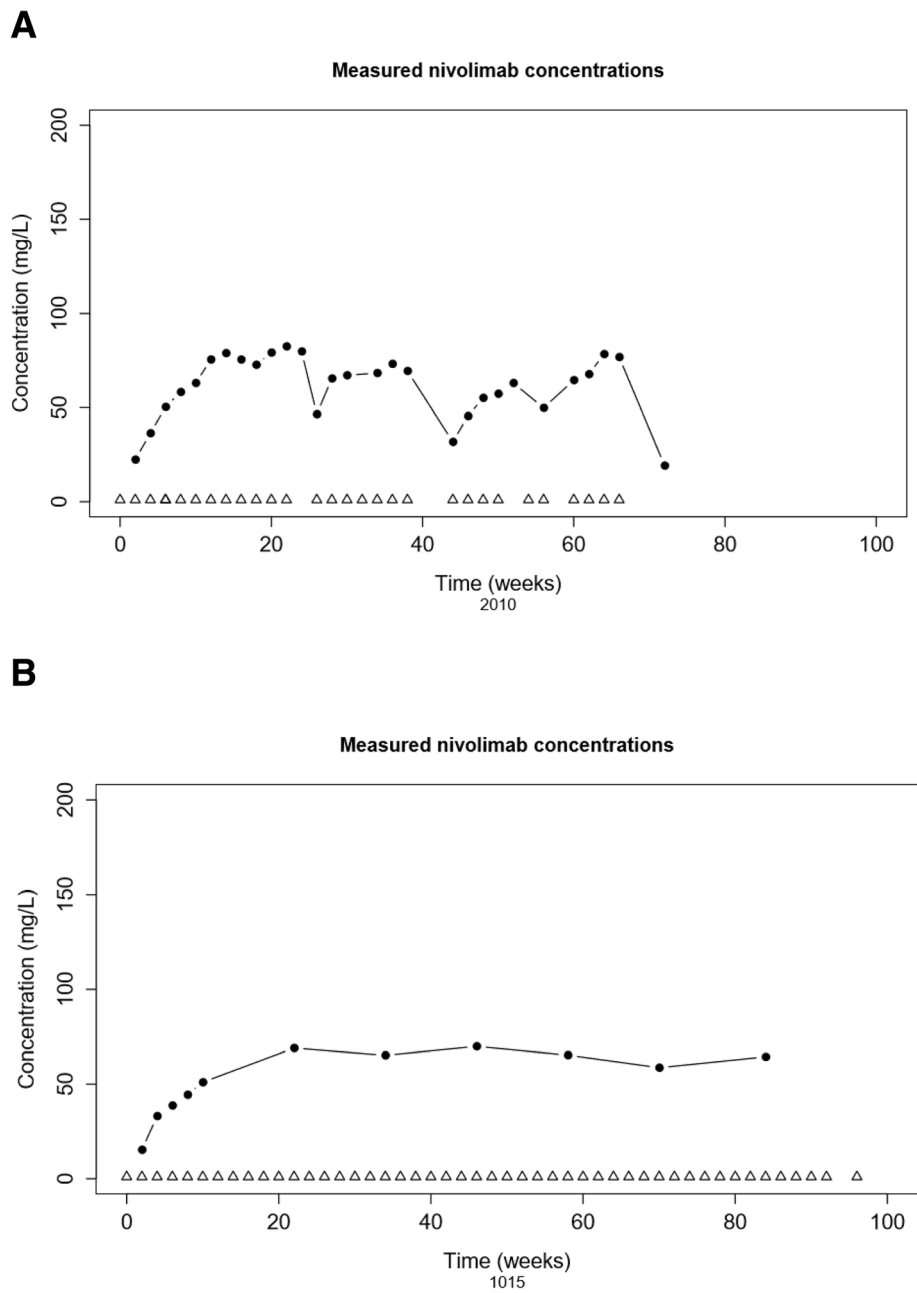
**Baseline covariates of patients**

Abbreviations: *n* number of patients, *IQR* inter-quartile range, *CKD* CKD-EPI renal clearance, *LD* lactate dehydrogenase

PPK model. These three covariates partially explained the high inter-individual variance (~ 37%) of drug clearance. Secondly, we have demonstrated the relationship between nivolumab pharmacokinetics and radiological response to therapy. By stratifying tumor types, the negative clearance-response relationship was highly significant in NSCLC, and

a non-significant trend was seen in RCC. The clearance-response relationship could not be confirmed in melanoma.

Our developed PPK model was comparable to previously described models for different MoAbs and nivolumab. In a model-based meta-analysis for four different MoAbs a robust fit was obtained using a two-



**Fig. 1** Patient examples. Example of two subjects (2010: NSCLC, 1015: melanoma patient) showing concentrations of nivolumab (mg/L) versus time (weeks), with received administrations of nivolumab being marked as open triangles. Single measurements are represented by closed circles. **a** Note that patient 2010 experienced several dose delays followed by a decrease of nivolumab concentrations that was in line with the approximate half-life time of 25 days, whereas **b** patient 2015 has had no dose delays and demonstrated a time to steady state concentrations of approximately 20 weeks

compartment model with estimates for systemic clearance and volume of distribution of 0.200 L/day and 3.6 L, respectively, and with a 31% inter-subject variability of clearance [20]. This was similar to recently published parameter estimates of a nivolumab-based two-compartment model described by Bajaj and colleagues (clearance

0.226 L/day; compartmental volume 3.6; 35% inter-subject variability of clearance) [9]. Although the time-varying pharmacokinetics as described by Liu et al. [21] could not be confirmed in our analysis, our time-stationary PPK model worked with sufficient accuracy. Important to note is that we observed that trough levels

**Table 2** Parameter estimates

Parameters	Units	Estimate	RSE (%)	Bootstrap estimate	Bootstrap 95% CI
Population parameters					
Clearance (CL)	L/day	0.211	3.5	0.211	0.196 to 0.226
Central volume of distribution (V1)	L	3.46	5.8	3.46	3.09 to 3.83
Peripheral volume of distribution (V2)	L	3.46	5.8	3.46	3.09 to 3.84
Inter-compartmental clearance (Q)	L/day	0.48	< 0.1	0.48	0.48 to 0.48
Covariate effects					
Female gender on CL	–	–0.17	29.1	–0.17	–0.27 to –0.06
BSA effect on CL	–	0.97	24.1	0.96	0.48 to 1.45
Albumin effect on CL	–	–1.34	19.8	–1.33	–1.83 to –0.86
Between-subject variability					
Clearance (CL)	CV%	30.7	9	30.3	24.8 to 35.6
Residual unexplained variability					
Proportional error	CV%	31.8	8	31.8	29.1 to 34.2

Population parameters, covariate effects and between-subject variability according to the final population pharmacokinetic model (Mf). Abbreviations: CL clearance, RSE relative standard error, CV% percentage coefficient of variation, CI confidence interval. The shrinkage of the between-subject variability of clearance and the proportional error was 9.2 and 4%, respectively

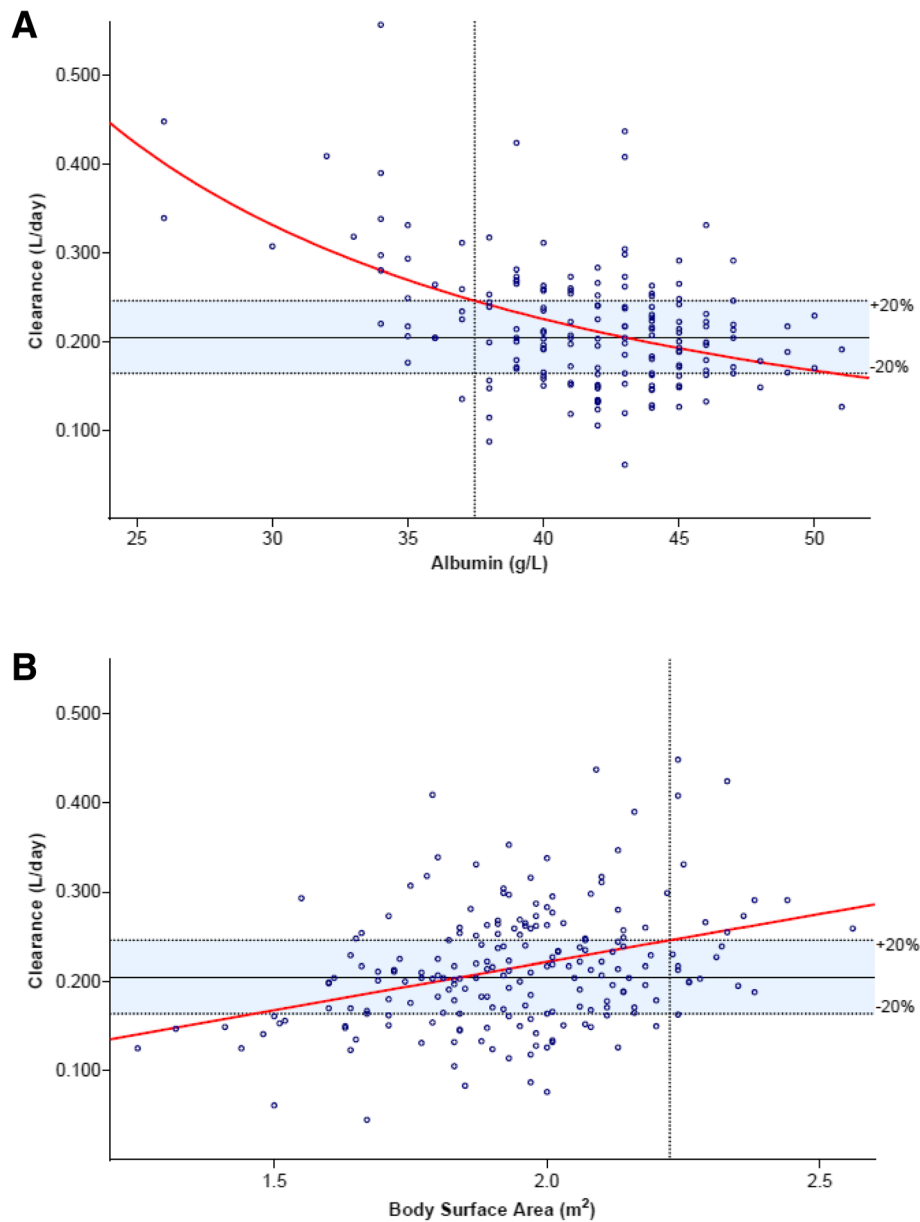
reached steady state concentrations and remained stable over time in individual patients (as illustrated by Fig. 1b).

Estimated systemic drug clearance according to the PPK model, which is inversely proportional to exposure, was utilized in this study to correlate clearance with response, survival, and occurrence of irAEs. It is important to realize that correlating systemic clearance to treatment outcome using a PPK model may potentially be influenced by those incorporated baseline covariates that are related to the efficacy of immunotherapy. To avoid such confounding, we utilized the initial model to demonstrate the relationship of systemic clearance with clinical outcome, which was further grouped by tumor type. Two patients were excluded from these analyses: a patient with mesothelioma and a patient who was treated with concomitant ipilimumab from the second cycle of nivolumab, at which point he was censored from the analyses.

The differential clearance-response relationship of nivolumab in NSCLC compared to melanoma remains to be elucidated. This may be explained by different tumor intrinsic as well as extrinsic factors, such as tumor immunogenicity and patient immunity (e.g. microbiota, environmental factors) respectively. In addition, positive D-R relationships were found for NSCLC at doses from 0.1 to 3 mg/kg Q2W [10], whereas for melanoma this was only observed at doses from 0.1 to 1 mg/kg Q2W [10]. In this respect it is noteworthy that the ORR of nivolumab in metastatic melanoma is superior compared to metastatic NSCLC [1–3]. In our study, patients with melanoma demonstrated better performance than patients with NSCLC before initiation of

nivolumab monotherapy (WHO performance score of 0: 76 and 23%, respectively). Taken together, we cannot exclude that nivolumab may be effective at lower doses for patients with melanoma than for NSCLC, and that patients with NSCLC may be more sensitive for changes in exposure than patients with melanoma. Consequently, nivolumab dosing based on weighted parameters may be relevant to optimize efficacy, particularly for NSCLC patients.

Whether the inverse clearance-response relation for nivolumab in NSCLC indicate a true causal effect on clinical outcome remains to be clarified. The issue was discussed by Badawi in a comment on our previous work showing a positive E-R relationship of nivolumab for NSCLC [13, 26]. Of note, an absent E-R relationship but a strong negative clearance-OS association has been described for pembrolizumab, another PD-1 blocking monoclonal antibody, in solid tumors [27]. The efficacy of pembrolizumab seemed to be independent of absolute doses from 2 to 10 mg/kg Q2W or flat dose 200 mg Q3W. Turner and colleagues argued that this clearance-OS relationship was confounded by the cachectic state of patients, which caused more rapid protein (and thus antibody) turnover and worse survival [27]. Given the circular reasoning in their study design, however, this hypothesis may not have been supported by appropriate evidence [28]. Although we did not find a covariate effect of prior weight loss or the performance score on the PPK model, serum albumin was inversely correlated with nivolumab clearance. Albumin may be considered as a surrogate marker for protein clearance, coinciding with clearance of endogenous immunoglobulins and nivolumab. This may provide supporting evidence to the



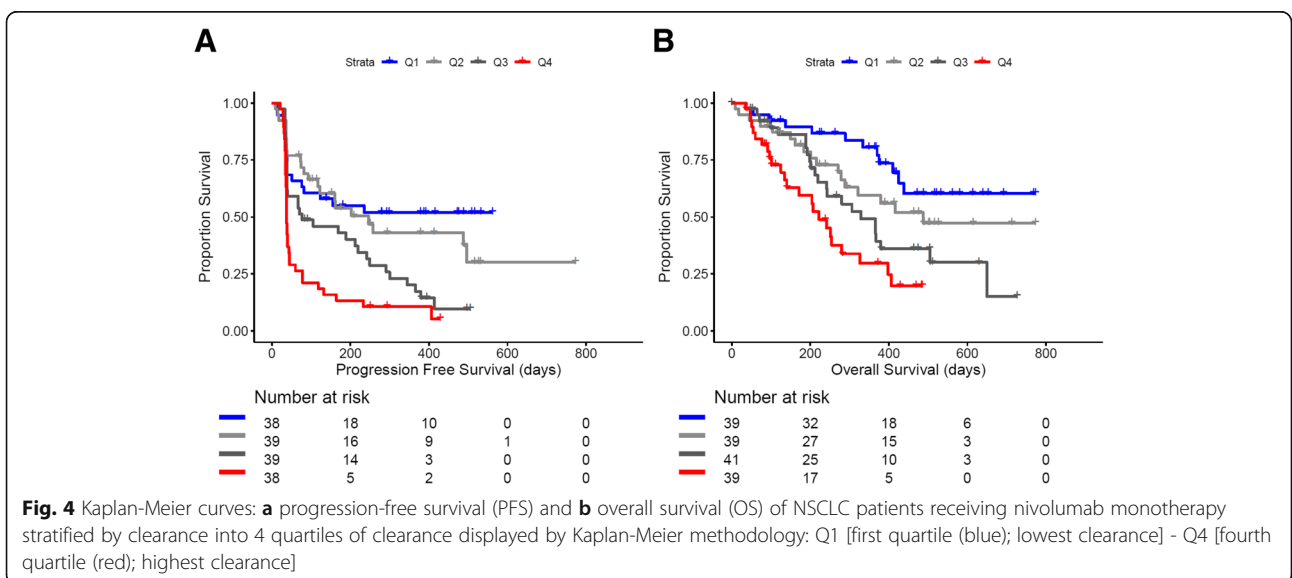
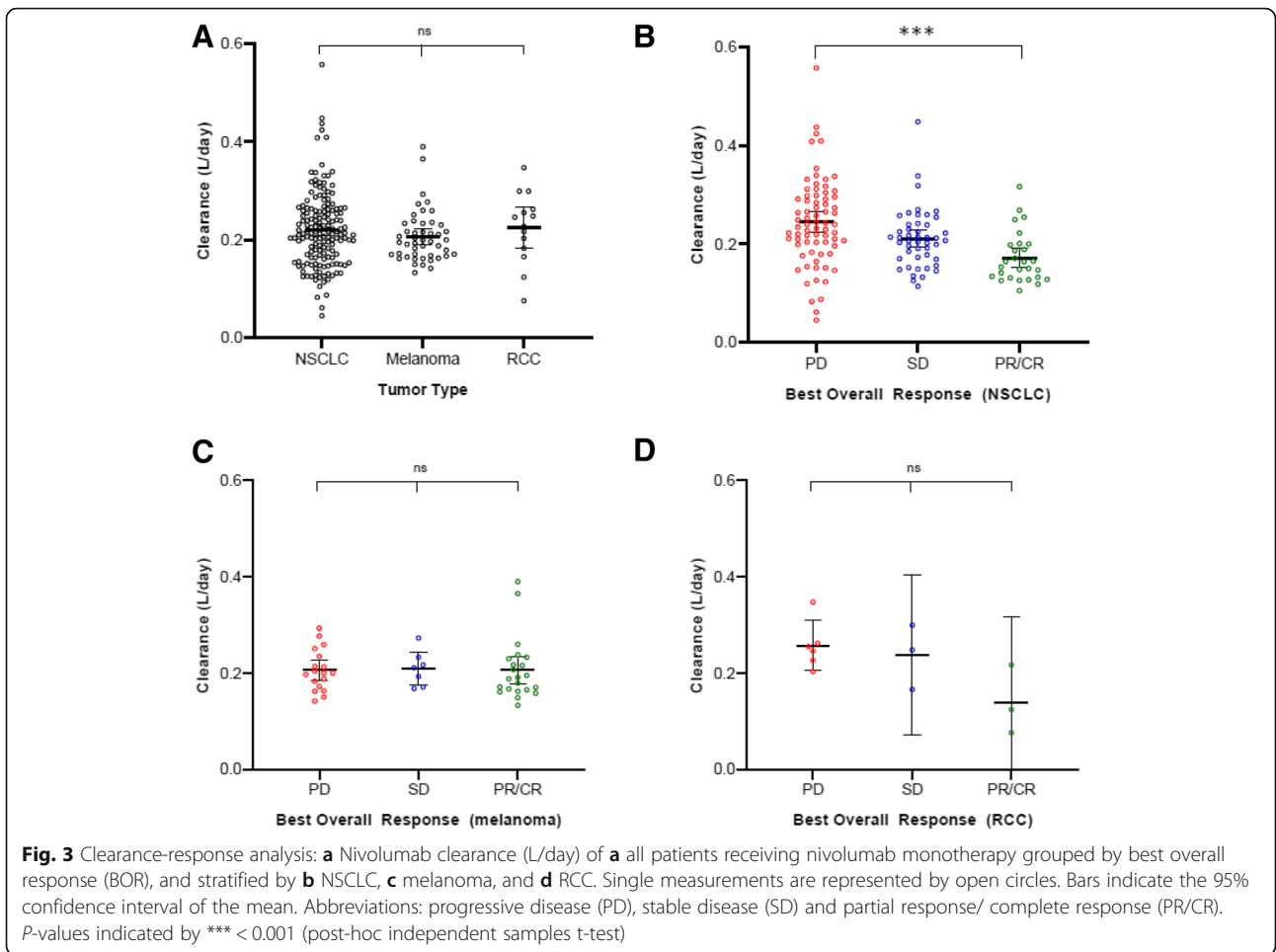
**Fig. 2** Parameter effect on clearance: **a** Estimated nivolumab clearance (L/day) as a function of **a** baseline serum albumin (g/L) and **b** body surface area (BSA; m<sup>2</sup>). Single measurements are represented by open circles. The red line predicts clearance according to the final PPK model (M<sub>1</sub>). The horizontal dotted lines mark the 20% increase of clearance, taking the mean clearance as reference (solid line). The vertical dotted line mark the threshold where nivolumab clearance is expected to be increased by > 20%

hypothesis that the exposure-response (or inverse clearance-response) relationship is affected by the metabolic state of patients, although we cannot rule out the possibility of a true causal relationship.

The elimination and recycling mechanisms of nivolumab is expected to exhibit similarities to those of endogenous immunoglobulins with a central role for the neonatal Fc receptor (FcRn) [29]. The FcRn is being widely expressed in human tissue ([www.proteinatlas.org](http://www.proteinatlas.org)), particularly in myeloid cells, and reported to play a key

role in the metabolism of albumin in blood [30]. Interestingly, myeloid cells have emerged as major regulators of cancer immune response by presenting tumor antigens to T cells and controlling the activity of cytotoxic cells, where myeloid-derived suppressor cells (MDSCs) suppress T cell responses and are implicated in tumor metastasis [31, 32]. In fact, MDSCs were negatively associated with response to treatment and survival in NSCLC [33, 34]. Monocytic myeloid cells in peripheral blood prior to anti-PD-1 nivolumab and pembrolizumab are associated with inferior





PFS and OS [35]. We expect that by further exploring the interaction between the peripheral immune system, e.g. FcRn in the myeloid lineage, and nivolumab pharmacokinetics, understanding of immune checkpoint inhibitor treatment could be significantly enhanced.

## Conclusions

In oncology, pharmacokinetic modeling is widely used to optimize drug dosing. For immune checkpoint inhibitors, approved flat dosing regimens for nivolumab have been solely based on simulations from dose-finding clinical trials. In this prospective real-life patient cohort study, we observed an effect of gender, body surface area, and baseline serum albumin on systemic drug clearance, thereby providing understanding of the high inter-individual variance of clearance. We demonstrate a strong inverse correlation of drug clearance and response in NSCLC, and a similar trend in RCC, but a clearance-response relationship was not observed in melanoma. Considering the recent approval of nivolumab fixed dosing regimens --which was solely based on simulating PK data from clinical studies-- this real-world study suggests that dosing regimens based on patient parameters may be considered to improve efficacy, particularly in NSCLC, and should be prospectively studied.

*Dutch Trial Registry NL6828. Registered 5 April 2016, <https://www.trialregister.nl/trial/6828>.*

## Additional file

**Additional file 1: Figure S1.** PPK model. **Figure S2.** Clearance-toxicity analysis. **Figure S3.** Goodness of fit. **Table S1.** Parameter estimates. **Table S2.** Clinical outcome and toxicity. **Table S3.** Patient characteristics by quartiles of drug clearance. Appendix 1 The final and initial models were internally validated using VPC (Figure S3) and a bootstrap procedure. Bootstrap analysis was performed with replacement by randomly selecting patients from the dataset. Syntax of initial PPK model M<sub>i</sub> (DOCX 588 kb)

## Abbreviations

BOR: Best overall response; BSA: Body surface area; BSV: Between-subject variability; CKD-EPI: Chronic Kidney Disease Epidemiology Collaboration; CL: Clearance; CR: Complete response; D-R: Dose-response; ELISA: Enzyme-linked immune sorbent assay; E-R: Exposure-response; FcRn: Neonatal Fc receptor; IgG4: Immunoglobulin G4; IQR: Interquartile range; irAE: Immune-related adverse event; LD: Lactate dehydrogenase; MDSC: Myeloid-derived suppressor cell; MoAb: Monoclonal antibody; NCI-CTCAE: National Cancer Institute Common Terminology Criteria for Adverse Events; NSCLC: Non-small cell lung cancer; OFV: Objective function value; OR: Objective response; OS: Overall survival; PD: Progressive disease; PD-1: Programmed death-1; PFS: Progression-free survival; PK: Pharmacokinetics; PPK: Population pharmacokinetics; PR: Partial response; RCC: Renal cell cancer; RECIST: Response Evaluation Criteria in Solid Tumors; SD: Stable disease

## Acknowledgments

The authors thank Kersten Landa (EMC) and Nina Schepers (EMC) for their help with the PK sample collection, and the authors acknowledge Leontien Heiligers (EMC) for her assistance with the volumetric tumor measurements.

## Authors' contributions

DH, RM, JA and SK contributed to the conception and design of the study. DH drafted the manuscript. DH and SK contributed to the acquisition, analysis, or interpretation of data. RM, JA, CL, MJ, AV and RD contributed in

interpretation of data. DH, AO, AV and JA performed radiological evaluation. EB, TD, DM, MS, AW contributed logistic, technical and material support. EO contributed statistical review of data. All authors contributed to critical revision of the manuscript for important intellectual content. All authors read and approved the final manuscript.

## Funding

The authors declare no external funding.

## Availability of data and materials

The datasets used and/or analyzed during the current study are available from the corresponding author on reasonable request.

## Ethics approval and consent to participate

Ethics approval of Multomab study (Medical Ethical Board Erasmus MC ref. 16–011), patients signed written informed consent provided before study entry.

## Consent for publication

Ethics approval of Multomab study (Medical Ethical Board Erasmus MC ref. 16–011), patient signed written informed consent provided before study entry.

## Competing interests

AV and JA have a consulting and advisory role at BMS. All remaining authors declare no potential conflicts of interest.

## Author details

<sup>1</sup>Department of Medical Oncology, Erasmus MC Cancer Institute, Erasmus University Medical Center, PO Box 2040, 3000 CA Rotterdam, The Netherlands. <sup>2</sup>Department of Pulmonology, Erasmus MC Cancer Institute, Erasmus University Medical Center, PO Box 2040, 3000 CA Rotterdam, The Netherlands. <sup>3</sup>Department of Immunology, Erasmus University Medical Center, Rotterdam, The Netherlands. <sup>4</sup>Department of Medical Oncology and Hematology, Cantonal Hospital, St. Gallen, Switzerland. <sup>5</sup>Department of Radiology & Nuclear Medicine, Erasmus University Medical Center, Rotterdam, The Netherlands. <sup>6</sup>Department of Pulmonology, Amphia Hospital, Breda, The Netherlands. <sup>7</sup>Department of Hospital Pharmacy, Erasmus University Medical Center, Rotterdam, The Netherlands.

Received: 27 May 2019 Accepted: 8 July 2019

Published online: 19 July 2019

## References

- Robert C, Long GV, Brady B, Dutriaux C, Maio M, Mortier L, Hassel JC, Rutkowski P, McNeil C, Kalinka-Warzocha E, et al. Nivolumab in previously untreated melanoma without BRAF mutation. *N Engl J Med.* 2015;372:320–30.
- Borghaei H, Paz-Ares L, Horn L, Spigel DR, Steins M, Ready NE, Chow LQ, Vokes EE, Felip E, Holgado E, et al. Nivolumab versus docetaxel in advanced nonsquamous non-small-cell lung cancer. *N Engl J Med.* 2015;373:1627–39.
- Brahmer J, Reckamp KL, Baas P, Crino L, Eberhardt WE, Poddubskaya E, Antonia S, Pluzanski A, Vokes EE, Holgado E, et al. Nivolumab versus docetaxel in advanced squamous-cell non-small-cell lung cancer. *N Engl J Med.* 2015;373:123–35.
- Jadhav SB, Khaowroongrueng V, Fueth M, Otteneder MB, Richter W, Derendorf H. Tissue distribution of a therapeutic monoclonal antibody determined by large pore microdialysis. *J Pharm Sci.* 2017;106:2853–9.
- Nivolumab (Opdivo), highlights of prescribing information. EMA report. 2019;2855:90.
- Topalian SL, Hodi FS, Brahmer JR, Gettinger SN, Smith DC, McDermott DF, Powderly JD, Carvajal RD, Sosman JA, Atkins MB, et al. Safety, activity, and immune correlates of anti-PD-1 antibody in cancer. *N Engl J Med.* 2012;366:2443–54.
- Long GV, Tykodi SS, Schneider JG, Garbe C, Gravis G, Rashford M, Agrawal S, Grigoryeva E, Bello A, Roy A, et al. Assessment of nivolumab exposure and clinical safety of 480 mg every 4 weeks flat-dosing schedule in patients with cancer. *Ann Oncol.* 2018;29:2208–13.
- Zhao X, Suryawanshi S, Hruska M, Feng Y, Wang X, Shen J, Vezina HE, McHenry MB, Waxman IM, Achanta A, et al. Assessment of nivolumab benefit-risk profile of a 240-mg flat dose relative to a 3-mg/kg dosing regimen in patients with advanced tumors. *Ann Oncol.* 2017;28:2002–8.

9. Bajaj G, Wang X, Agrawal S, Gupta M, Roy A, Feng Y. Model-based population pharmacokinetic analysis of Nivolumab in patients with solid tumors. *CPT Pharmacometrics Syst Pharmacol*. 2017;6:58–66.
10. Agrawal S, Feng Y, Roy A, Kollia G, Lestini B. Nivolumab dose selection: challenges, opportunities, and lessons learned for cancer immunotherapy. *J Immunother Cancer*. 2016;4:72.
11. Weber JS, D'Angelo SP, Minor D, Hodi FS, Gutzmer R, Neyns B, Hoeller C, Khushalani NI, Miller WH Jr, Lao CD, et al. Nivolumab versus chemotherapy in patients with advanced melanoma who progressed after anti-CTLA-4 treatment (CheckMate 037): a randomised, controlled, open-label, phase 3 trial. *Lancet Oncol*. 2015;16:375–84.
12. Wang X, Feng Y, Bajaj G, Gupta M, Agrawal S, Yang A, Park JS, Lestini B, Roy A. Quantitative characterization of the exposure-response relationship for Cancer immunotherapy: a case study of Nivolumab in patients with advanced melanoma. *CPT Pharmacometrics Syst Pharmacol*. 2017;6:40–8.
13. Basak EA, Koolen SLW, Hurkmans DP, Schreurs MWJ, Bins S, Oomen-de Hoop E, Wijkhuijs AJM, Besten ID, Sleijfer S, Debets R, et al. Correlation between nivolumab exposure and treatment outcomes in non-small-cell lung cancer. *Eur J Cancer*. 2019;109:12–20.
14. Basak EA, Wijkhuijs AJM, Mathijssen RHJ, Koolen SLW, Schreurs MWJ. Development of an enzyme-linked immune sorbent assay to measure Nivolumab and Pembrolizumab serum concentrations. *Ther Drug Monit*. 2018;40:596–601.
15. Oken MM, Creech RH, Tormey DC, Horton J, Davis TE, McFadden ET, Carbone PP. Toxicity and response criteria of the eastern cooperative oncology group. *Am J Clin Oncol*. 1982;5:649–55.
16. Martin L, Senesse P, Gioulbasanis I, Antoun S, Bozzetti F, Deans C, Strasser F, Thoresen L, Jagoe RT, Chasen M, et al. Diagnostic criteria for the classification of cancer-associated weight loss. *J Clin Oncol*. 2015;33:90–9.
17. Mosteller RD. Simplified calculation of body-surface area. *N Engl J Med*. 1987;317:1098.
18. Stevens LA, Claybon MA, Schmid CH, Chen J, Horio M, Imai E, Nelson RG, Van Deventer M, Wang HY, Zuo L, et al. Evaluation of the chronic kidney disease epidemiology collaboration equation for estimating the glomerular filtration rate in multiple ethnicities. *Kidney Int*. 2011;79:555–62.
19. Eisenhauer EA, Therasse P, Bogaerts J, Schwartz LH, Sargent D, Ford R, Dancey J, Arbuck S, Gwyther S, Mooney M, et al. New response evaluation criteria in solid tumours: revised RECIST guideline (version 1.1). *Eur J Cancer*. 2009;45:228–47.
20. Davda JP, Dodds MG, Gibbs MA, Wisdom W, Gibbs J. A model-based meta-analysis of monoclonal antibody pharmacokinetics to guide optimal first-in-human study design. *MAbs*. 2014;6:1094–102.
21. Liu C, Yu J, Li H, Liu J, Xu Y, Song P, Liu Q, Zhao H, Xu J, Maher VE, et al. Association of time-varying clearance of nivolumab with disease dynamics and its implications on exposure response analysis. *Clin Pharmacol Ther*. 2017;101:657–66.
22. Savic RM, Karlsson MO. Importance of shrinkage in empirical bayes estimates for diagnostics: problems and solutions. *AAPS J*. 2009;11:558–69.
23. Mould DR, Upton RN. Basic concepts in population modeling, simulation, and model-based drug development. *CPT Pharmacometrics Syst Pharmacol*. 2012;1:e6.
24. Mould DR, Upton RN. Basic concepts in population modeling, simulation, and model-based drug development-part 2: introduction to pharmacokinetic modeling methods. *CPT Pharmacometrics Syst Pharmacol*. 2013;2:e38.
25. Upton RN, Mould DR. Basic concepts in population modeling, simulation, and model-based drug development: part 3-introduction to pharmacodynamic modeling methods. *CPT Pharmacometrics Syst Pharmacol*. 2014;3:e88.
26. Badawi M, Coss CC, Phelps MA. Letter to the editor: exposure-response or clearance-response relationship in immune checkpoint therapy?-a comment on 'correlation between nivolumab exposure and treatment outcomes in non-small-cell lung cancer' by Basak et al. *Eur J Cancer*. 2019;114:25–6.
27. Turner DC, Kondic AG, Anderson KM, Robinson AG, Garon EB, Riess JW, Jain L, Mayawala K, Kang J, Ebbinghaus SW, et al. Pembrolizumab exposure-response assessments challenged by association of Cancer Cachexia and catabolic clearance. *Clin Cancer Res*. 2018;24:5841–9.
28. Bins S, Koolen SLW, Mathijssen RHJ. Pembrolizumab exposure-response assessments challenged by association of Cancer Cachexia and catabolic clearance-letter. *Clin Cancer Res*. 2019;25:3192.
29. Pyzik M, Rath T, Lencer WI, Baker K, Blumberg RS. FcRn: the architect behind the immune and nonimmune functions of IgG and albumin. *J Immunol*. 2015;194:4595–603.
30. Zhu X, Meng G, Dickinson BL, Li X, Mizoguchi E, Miao L, Wang Y, Robert C, Wu B, Smith PD, et al. MHC class I-related neonatal fc receptor for IgG is functionally expressed in monocytes, intestinal macrophages, and dendritic cells. *J Immunol*. 2001;166:3266–76.
31. Gabrilovich DI, Ostrand-Rosenberg S, Bronte V. Coordinated regulation of myeloid cells by tumours. *Nat Rev Immunol*. 2012;12:253–68.
32. Parker KH, Beury DW, Ostrand-Rosenberg S. Myeloid-derived suppressor cells: critical cells driving immune suppression in the tumor microenvironment. *Adv Cancer Res*. 2015;128:95–139.
33. Huang A, Zhang B, Wang B, Zhang F, Fan KX, Guo YJ. Increased CD14(+)-HLA-DR (–/low) myeloid-derived suppressor cells correlate with extrathoracic metastasis and poor response to chemotherapy in non-small cell lung cancer patients. *Cancer Immunol Immunother*. 2013;62:1439–51.
34. de Goeje PL, Bezemer K, Heuvers ME, Dingemans AC, Groen HJ, Smit EF, Hoogsteden HC, Hendriks RW, Aerts JG, Hegmans JP. Immunoglobulin-like transcript 3 is expressed by myeloid-derived suppressor cells and correlates with survival in patients with non-small cell lung cancer. *Oncoimmunology*. 2015;4:e1014242.
35. Soyano AE, Dholaria B, Marin-Acevedo JA, Diehl N, Hodge D, Luo Y, Manochakian R, Chumsri S, Adjei A, Knutson KL, Lou Y. Peripheral blood biomarkers correlate with outcomes in advanced non-small cell lung Cancer patients treated with anti-PD-1 antibodies. *J Immunother Cancer*. 2018;6:129.

## Publisher's Note

Springer Nature remains neutral with regard to jurisdictional claims in published maps and institutional affiliations.

**Ready to submit your research? Choose BMC and benefit from:**

- fast, convenient online submission
- thorough peer review by experienced researchers in your field
- rapid publication on acceptance
- support for research data, including large and complex data types
- gold Open Access which fosters wider collaboration and increased citations
- maximum visibility for your research: over 100M website views per year

**At BMC, research is always in progress.**

Learn more [biomedcentral.com/submissions](https://biomedcentral.com/submissions)

