

POSTER PRESENTATION

Open Access

Post-occlusion hyperemia ASL differentiates peripheral artery disease from controls

David Lopez^{1*}, Craig H Meyer^{2,3}, Frederick H Epstein², John M Christopher³, Jennifer Kay³, Christopher M Kramer^{1,3}

From 17th Annual SCMR Scientific Sessions
New Orleans, LA, USA. 16-19 January 2014

Background

Pulsed arterial spin labeling (PASL) is a non-contrast MRI technique that can be used to quantify calf muscle perfusion with stress. We hypothesized that peak post-occlusion hyperemia measured with PASL would discriminate peripheral artery disease (PAD) patients from healthy subjects (NL).

Methods

Ten NL (70% M) and 11 PAD (81% M) volunteers were enrolled. Limb ischemia was induced with a thigh cuff for 5 minutes. After inflation to 200-230 mmHg, absence of residual flow was verified with axial SSFP cine images. Immediately after cuff deflation, 15 averaged PASL images were acquired using a single-shot echo-planar (EPI) pulse sequence (total scan time 62 s, FOV 200 × 200 mm, matrix 64 × 64, TR 4000 ms, TE 32 ms, 10 mm thick). PASL was performed using the PICORE technique with proximal blood labeling. The Q2TIPS technique minimized errors from variable transit delay of spins from labeling region to imaging slice and contamination of perfusion signal by intravascular blood. Flow was measured by drawing regions of interest on the motion corrected EPI while avoiding large blood vessels, and then copied to the flow maps. Flow measurements were compared for individual muscle groups and as a composite of all calf muscle groups.

Results

NL subjects were younger (54 ± 7 vs. 72 ± 11 , $p < 0.001$) and had normal ankle-brachial index ($1.0 \pm .07$ vs. $0.68 \pm .05$, $p < 0.001$) compared to PAD. Perfusion was higher in the NL group than in PAD patients when compared by individual muscle groups (Table 1) and when the

composite calf perfusion was calculated (122 ± 35 vs. 36 ± 19 mL/100 g/min, $p < 0.001$), mean difference 86 mL/100 g/min (95% CI 60-112)(Figure 1A). Reactive hyperemia was typically seen in all muscle groups of NL subjects (Figure 1B), whereas in PAD patients the response was limited to the deep compartment (DC) (Figure 1C). Notably, the perfusion in the DC of PAD patients was not different from the anterior compartment (AC) flow in NL volunteers (96 ± 65 vs. 88 ± 31 ml/100 g/min, $p = 0.78$).

Conclusions

PASL clearly differentiates PAD patients from NL volunteers during post-cuff occlusion hyperemia. However, individual muscle group measurements must be compared to reference values of the same compartment since PAD patients may have normal range hyperemia in the deep compartment. PASL during cuff-occlusion hyperemia appears to be a valuable tool for testing novel PAD therapies.

Funding

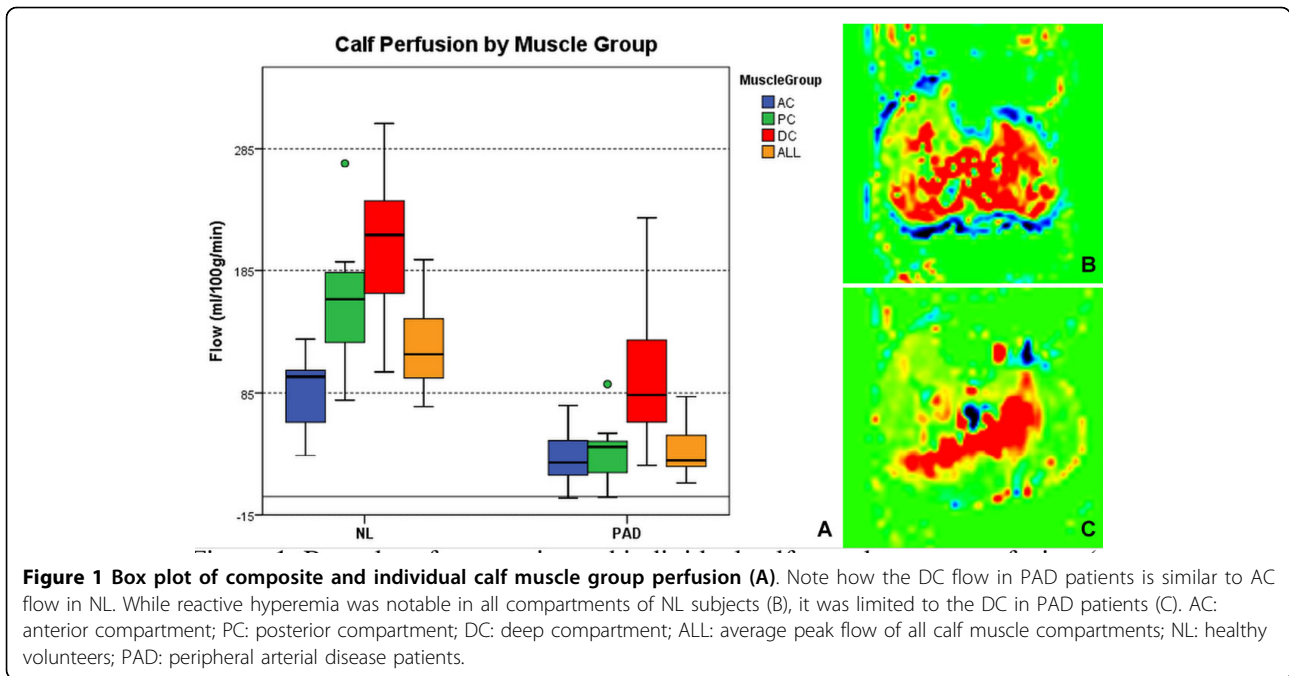
T32 EB003841 (DL), NIH HL075792 (CMK).

Table 1 Composite and individual muscle group perfusion.

Peak Flow (ml/100 g/min)	NL (n = 10)	PAD (n = 11)	p-value*
Composite	122 ± 35	36 ± 22	< 0.001
Anterior Compartment	88 ± 31	32 ± 25	< 0.001
Posterior Compartment	160 ± 53	35 ± 26	< 0.001
Deep Compartment	206 ± 67	95 ± 66	0.005

*Two-sided t-test.

¹Medicine, University of Virginia, Charlottesville, Virginia, USA
Full list of author information is available at the end of the article



Authors' details

¹Medicine, University of Virginia, Charlottesville, Virginia, USA. ²Biomedical Engineering, University of Virginia, Charlottesville, Virginia, USA. ³Radiology and Medical Imaging, University of Virginia, Charlottesville, Virginia, USA.

Published: 16 January 2014

doi:10.1186/1532-429X-16-S1-P10

Cite this article as: Lopez et al.: Post-occlusion hyperemia ASL differentiates peripheral artery disease from controls. *Journal of Cardiovascular Magnetic Resonance* 2014 **16**(Suppl 1):P10.

Submit your next manuscript to BioMed Central and take full advantage of:

- Convenient online submission
- Thorough peer review
- No space constraints or color figure charges
- Immediate publication on acceptance
- Inclusion in PubMed, CAS, Scopus and Google Scholar
- Research which is freely available for redistribution

Submit your manuscript at
www.biomedcentral.com/submit

 BioMed Central