

Clinical Significance of Factor XIII Activity and Monocyte-Derived Microparticles in Cancer Patients

This article was published in the following Dove Press journal:
Vascular Health and Risk Management

Yusuke Sawai
Yuta Yamanaka
Shosaku Nomura

First Department of Internal Medicine,
Kansai Medical University, Osaka, Japan

Background: The aim was to evaluate factor XIII activity (FXIIIa) and monocyte-derived microparticles (MDMPs) in cancer patients.

Methods: In total, 138 cancer patients (31 malignant lymphomas, 39 multiple myelomas, and 68 lung cancers) were analyzed. We measured various biomarkers including FXIIIa and MDMPs.

Results: The values of endothelial activation markers, monocyte chemoattractant peptide (MCP)-1, soluble (s)CD14, and MDMPs were higher in cancer patients than in non-cancerous controls. MCP-1, sCD14, and MDMPs were significantly correlated with FXIIIa in multivariate analysis in cancer patients. In addition, MCP-1, sCD14, and MDMP levels were significantly increased in the high FXIIIa group of patients. Finally, the survival rate of the high FXIIIa group was significantly poor in the Kaplan–Meier analysis.

Conclusion: These results suggest that abnormal levels of FXIIIa and MDMPs may offer promise as poor prognostic factors in cancer patients.

Keywords: factor XIII activity, cancer, thrombosis, endothelial cell, monocyte-derived microparticle, MDMP

Introduction

In recent years, oncocardiology has emerged as a new area of academic research, mainly in Europe and the United States.^{1,2} Progression in cancer treatment including the development of molecular-targeted drugs has been made against this background.³ While survival has improved, new cardiotoxicity or cardiovascular toxicity events due to such new treatments have been recorded. As a result, there is a growing need for cardiovascular treatment in parallel with cancer therapy.⁴ The cardiotoxicity of chemotherapies is classified as heart failure, coronary heart disease, hypertension, thromboembolism, and arrhythmia.⁵ Venous thromboembolism (VTE) is particularly important,⁶ and came to be described as cancer-associated thrombosis (CAT) when VTE is related to cancer.⁷ Cancer cells or the inflammatory region around cancer cells release substances that function in thrombosis such as tissue factor (TF), coagulation factor, or cytokines.⁸ Vascular disorders, associated with chemotherapy or enhancement of the coagulation system, are important as factors of VTE.⁹

Factor XIII (FXIII) is present in the blood as a heterotetramer that is formed by FXIII-A and FXIII-B subunit polymers.¹⁰ FXIII-A is present mainly in platelets, megakaryocytes, monocytes, and macrophages.^{11,12} In contrast, FXIII-B is generated and secreted by liver cells, and binds to FXIII-A in peripheral blood.^{10–12} FXIII is

Correspondence: Shosaku Nomura
First Department of Internal Medicine,
Kansai Medical University, 2-3-1 Shin-
Machi, Hirakata Osaka 573-1191, Japan
Tel + 81 72 804 2754
Fax + 81 72 804 2041
Email nomurash@hirakata.kmu.ac.jp

activated by thrombin which is produced in the final stages of coagulation, in a process called FXIII activity (FXIIIa).¹¹ FXIIIa forms covalent bonds between fibrins to eventually stabilize them.^{11,12} Therefore, FXIII has an essential role in normal hemostasis, in which it contributes to the regulation of fibrinolysis.¹³ Specifically, this factor contributes to clot strength in the final step of coagulation with platelets and fibrinogen. Additionally, functional cellular FXIII becomes exposed on the surface of stimulated platelets.¹⁴ These observations suggest that a close relationship exists between activated platelets and FXIII. However, it has been reported that FXIII has various functions.^{15–17} For example, high FXIIIa is associated with the risk of developing cardiovascular events.¹⁸ Furthermore, abnormal FXIII expression levels or activity are found in some cancer patients.^{19,20}

Activated monocytes and monocyte-derived microparticles (MDMPs) might be markers for vasculopathies in patients with lifestyle-related diseases.^{21–23} In addition, monocyte chemotactic peptide (MCP)-1 is unregulated in some patients along with endothelial cell dysfunction markers such as soluble (s) E-selectin and soluble vascular cell adhesion molecule-1 (sVCAM-1).^{24,25} However, little is known about FXIIIa and MDMPs in cancer patients. We investigated FXIIIa, MDMPs, and various biomarkers in cancer patients.

Materials and Methods

Subjects

Cancer patients and healthy volunteers were recruited from Kansai Medical Hospital and Kansai Medical University (Osaka, Japan) between August 2014 and September 2018. In total, 138 cancer patients were analyzed, and 14 had thrombotic complications within 6 months after their first examination. The types of cancer studied were malignant lymphoma (ML; $n = 31$), multiple myeloma (MM; $n = 39$), and lung cancer (LC; $n = 68$). The disease type of ML was classified using World Health Organization (WHO) classification 2017.²⁶ ML was classified into four stage (I, II, III and IV) by the Lugano classification.²⁷ The staging of MM was classified using the revised international staging system,²⁸ and LC stage was classified using the TNM classification of the international association for the study of LC.²⁹ This study was conducted in accordance with the Declaration of Helsinki and was performed with approval from the Institutional Review Board of Kansai Medical University. Written informed consent was obtained from all participants.

Measurement of FXIIIa

Patient blood samples (1.8 mL) were collected in 0.2 mL sodium citrate-containing tubes to a total volume of 2 mL. Citrated plasma was isolated by centrifugation for 15 min at $1500 \times g$ at 4°C . Plasma was divided into aliquots and FXIIIa was measured by photometric assay.³⁰ In a one-step procedure, FXIII was activated by thrombin, and Ca^{2+} and cross-linked glycine-ethyl ester to a specific glutamine-containing peptide substrate. The released ammonia was incorporated into alpha-ketoglutarate by glutamate dehydrogenase, and the NADH consumption of this reaction was measured photometrically at 340 nm. NADH-consumption was directly proportional to FXIIIa.

Measurement MDMPs

Blood samples were collected using a 21-gauge needle from a peripheral vein into vacutainers containing ethylenediaminetetraacetic acid (NIPRO Co. Ltd., Osaka, Japan) to minimize platelet activation. The samples were handled as described in the manufacturer's protocol. Briefly, the samples were gently mixed by inverting the tube once or twice, stored at room temperature for 2–3 h, and centrifuged at $8000 \times g$ for 5 min at room temperature. Storing samples at room temperature for 2–3 h did not affect MDMP levels. MDMPs were analyzed using an FACS Cant II flow cytometer (BD Biosciences, Franklin Lakes, NJ, USA). All flow cytometry data of forward light scatter (FSC), side scatter (SSC), and fluorescence intensity (FL) were analyzed in log space. MDMPs were identified and quantified based on their FSC/SSC characteristics according to their size and reactivity to the monocyte-specific monoclonal antibody (CD14). The lower detection limit was placed at a threshold above the electronic background noise of the flow cytometer, and the upper threshold for FSC ($1\mu\text{m}$) was set with the use of standard beads (Megamix, BioCytex, Tokyo, Japan) (Figure 1A). To identify positively stained events, thresholds were set based on FITC-CD14 (G1 gate) (Figure 1B). Finally, events in the G1 gate were expanded to FSC/SSC (G2 gate) (Figure 1C). The density of MDMPs in the G2 gate was set to less than 10 events/ μL using blood samples from healthy volunteers.

Measurement of MCP-I, sE-selectin, sVCAM-I, sCD14 and PAI-I

Patient blood samples were collected in empty or sodium citrate-containing tubes and left at room temperature for a minimum of 1 h. Serum and citrated plasma were

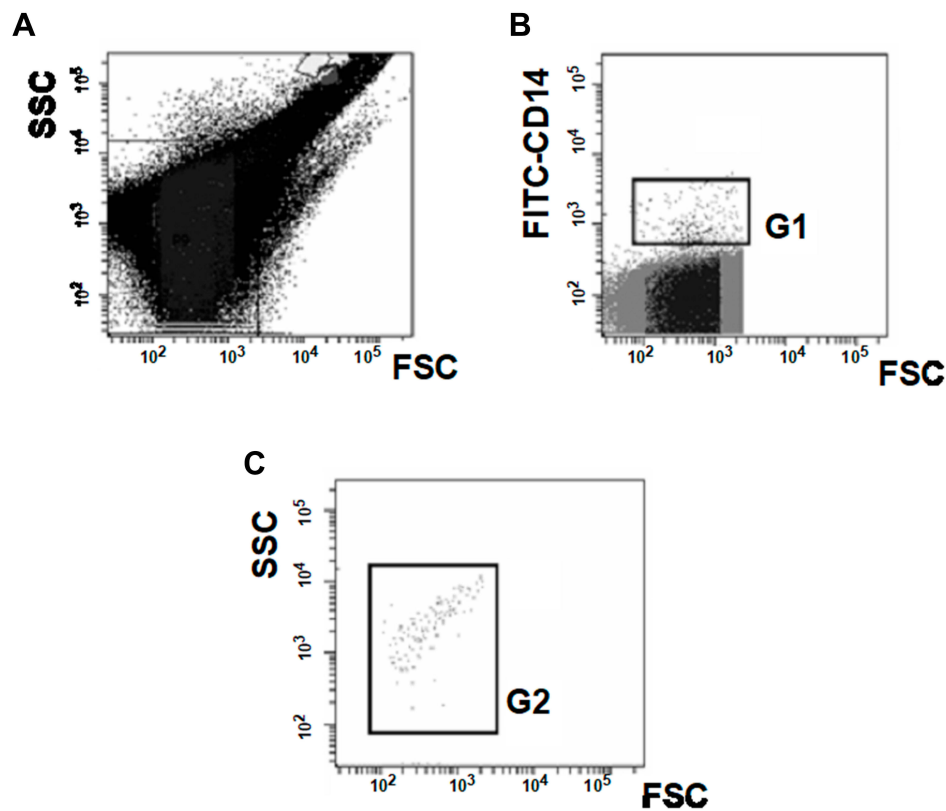


Figure 1 Gating and staining strategy for the detection of MDMPs in FACS analysis (A-C).
Abbreviations: SSC, side scatter; FSC, forward scatter.

isolated by centrifugation for 20 min at 1000 ×g at 4°C. Serum was divided into aliquots and frozen at −30°C until use. Recombinant products and standard solutions provided with commercial kits served as positive controls. Plasma concentrations of MCP-1, sE-selectin, sVCAM-1 and PAI-1 were measured using monoclonal antibody-based ELISA kits (Invitrogen, Carlsbad, CA, USA). Plasma sCD14 levels were measured by ELISA (R&D Systems Inc., Minneapolis, MN, USA). All kits were used according to the manufacturers' instructions.

Statistical Analysis

Data are expressed as mean ± standard deviation (SD) and were analyzed using multiple regression (stepwise method), as appropriate. A receiver operating characteristics (ROC) curve analysis was used to estimate the value of each biomarker. Between-group comparisons were made using the Newman–Keuls test and Scheffe's test. Overall survival (OS) was defined as the time from initial diagnosis to the time of death from any cause or the date the patient was last known to be alive. Univariate analyses of OS were performed using the Kaplan–Meier product-limit method with the Log-rank

test and the Cox proportional hazards model. All statistical analyses were performed using StatFlex (v7) software, with $P < 0.05$ being considered statistically significant.

Results

Cell Type and Staging of Cancers of Cancer Patients

The types of ML examined in this study included 19 mature B cell lymphomas, 10 mature T/natural killer (NK) cell lymphomas, and two Hodgkin lymphomas. The frequency of stage III and IV in ML was 34%. All patients with MM were symptomatic myeloma,³¹ and the frequency of stage III was 45%. The cell type of LC was 60 non-small cell and eight small cell LC. The frequency of stage IIIb and IV was 56%. The mortality rate during the observation period was 32% (ML, 5/31; MM, 10/39; and LC, 32/68).

Clinical Characteristics of Cancer Patients

Patient demographic and clinical characteristics are shown in Table 1. We confirmed that all biomarker values were

Table 1 Demographic and Clinical Characteristics of Cancer Patients and Healthy Controls

	Control	Cancer Patients	p value
n	40	138	
Men/women (no.)	26/14	81/57	
Age (years)	42 ± 11	53 ± 13	0.1946
BMI (kg/m ²)	25.1 ± 6.2	25.3 ± 9.2	0.6149
WBC (/ μ l)	58 ± 13	61 ± 24	0.5362
Hb (g/dL)	14.5 ± 2.9	12.7 ± 8.8	0.0175*
RDW-SD (fl)	43.3 ± 10.5	61.4 ± 22.6	0.0074*
Plt ($\times 10^4$ / μ l)	24.5 ± 3.9	27.3 ± 7.8	0.1375
MPV (fl)	9.12 ± 0.51	10.13 ± 1.13	0.0086*
FXIIIa (%)	89.2 ± 10.3	98.5 ± 13.2	0.0225*
sE-selectin (ng/mL)	43 ± 12	59 ± 26	0.0122*
sVCAM-1 (ng/ml)	613 ± 181	1556 ± 822	0.0094*
PAI-1 (ng/mL)	9.1 ± 2.7	36.2 ± 8.1	0.0012*
MCP-1 (pg/ml)	395 ± 91	482 ± 126	0.0338*
sCD14 (μ g/mL)	2.3 ± 0.8	3.9 ± 1.2	0.0362*
MDMP (ev/ μ l)	39.4 ± 8.2	56.3 ± 10.2	0.0133*

Notes: Data are shown as mean ± SD. *Indicates statistical significance ($P < 0.05$).
Abbreviations: BMI, body mass index; WBC, white blood cells; Hb, hemoglobin; RDW-SD, red blood cell distribution width-standard deviation; Plt, platelet count; MPV, mean platelet volume; FXIIIa, factor XIII activity; sE-selectin, soluble E-selectin; sVCAM-1, soluble VCAM-1; PAI-1, plasminogen activator inhibitor-1; MCP-1, monocyte chemoattractant peptide; sCD14, soluble CD14; MDMPs, monocyte-derived microparticles.

distributed normally, and we estimated the value of each biomarker using a ROC curve. Age, body mass index (BMI), white blood cells and platelets were similar in the cancer and the non-cancer controls. Hb in cancer patients was significantly lower than the non-cancerous controls. However, the values of red blood cell distribution width (RDW)-SD, mean platelet volume (MPV), FXIIIa, sE-selectin, sVCAM-1, PAI-1, MCP-1, sCD14, and MDMPs were higher in cancer patients than the healthy controls.

Univariate and Multivariate Regression Analyses

We investigated the associations between 14 variables and FXIIIa in cancer patients (Table 2). Univariate analysis showed that RDW, platelets, MPV, sE-selectin, sVCAM-1, PAI-1, MCP-1, sCD14, and MDMPs were factors significantly associated with FXIIIa, whereas sVCAM-1, PAI-1, MCP-1, sCD14, and MDMPs were significantly correlated with FXIIIa in multivariate analysis.

Comparison of All Markers of High FXIIIa or Non-High FXIIIa Groups in Cancer Patients

We calculated the cutoff value for FXIIIa using ROC curve analysis. A cutoff value of 108.23 was found to be an identifying value for patients with cancers. We divided the patients

Table 2 Multiregression Analysis of FXIIIa in Cancer Patients

	Univariate	p value	Multivariate	
	β		β	p value
Age (years)	0.2362	0.08162		
Sex (men)	- 0.0673	0.37952		
BMI (kg/m ²)	0.2361	0.96373		
WBC (/ μ l)	0.1759	0.28345		
Hb (g/dL)	0.2392	0.09857		
RDW-SD (fl)	0.3276	0.04811*	0.2336	0.11324
Plt ($\times 10^4$ / μ l)	0.3961	0.00923*	0.2751	0.07312
MPV (fl)	0.4355	0.00162*	0.3154	0.05982
sE-selectin (ng/mL)	0.3823	0.00713*	0.2861	0.06239
sVCAM-1 (ng/mL)	0.4379	0.00192*	0.3365	0.04125*
PAI-1 (pg/mL)	0.4682	0.00188*	0.3589	0.01142*
MCP-1 (pg/mL)	0.5122	0.00136*	0.4327	0.03512*
sCD14 (μ g/mL)	0.4962	0.00274*	0.3986	0.05013
MDMP (ev/ μ l)	0.6235	0.00018*	0.5943	0.00951*

Notes: β indicates standardized regression coefficients. *Indicates statistical significance ($P < 0.05$).

Abbreviations: BMI, body mass index; WBC, white blood cells; Hb, hemoglobin; RDW-SD, red blood cell distribution width-standard deviation; Plt, platelet count; MPV, mean platelet volume; FXIIIa, factor XIII activity; sE-selectin, soluble E-selectin; sVCAM-1, soluble VCAM-1; PAI-1, plasminogen activator inhibitor-1; MCP-1, monocyte chemoattractant peptide; sCD14, soluble CD14; MDMPs, monocyte-derived microparticles.

with cancer into two groups according to the cutoff value of 108.23 for FXIIIa. There were no significant differences in age, BMI, WBC, Hb, RDW-SD, platelets and MPV between the non-high FXIIIa and high FXIIIa groups (Table 3). However, sE-selectin, sVCAM-1, PAI-1, MCP-1, sCD14 and MDMP levels were significantly increased in the high FXIIIa group (Table 3).

Kaplan–Meier Curves of Non-High FXIIIa and High FXIIIa Patient Groups

Figure 2 shows the Kaplan–Meier curves for OS of the cancer patients with or without high FXIIIa. The log-rank P -value at 2000 days between patients with or without high FXIIIa was 0.032.

Discussion

It has been known for some time that cancer is accompanied by the risk of thrombosis such as Trousseau's syndrome.^{32,33} It is necessary to consider the thrombosis associated with the treatment for cancer separately from the original risk of cancer itself.⁹ In addition, even if the cancer treatment is successful, we have to consider the other factors or side effects of anticancer drugs. Therefore, predicting CAT is an important proposition for cancer in clinical practice. Several biomarkers have been reported in

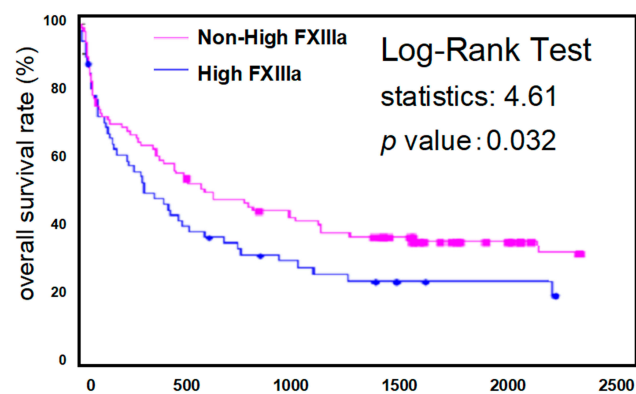
Table 3 Plasma Levels of Various Biomarkers in the Non-High FXIIIa and High FXIIIa Groups

	Non-High FXIIIa Group	High FXIIIa Group	p value
n	80	58	
Men/women (no.)	50/30	31/27	
Age (years)	51 ± 14	54 ± 12	0.6347
BMI (kg/m ²)	25.1 ± 7.4	25.5 ± 9.6	0.5988
WBC (μl)	59 ± 19	63 ± 25	0.5873
Hb (g/dL)	13.1 ± 8.3	11.9 ± 9.5	0.2139
RDW-SD (fl)	56.4 ± 17.5	63.9 ± 24.2	0.0512
Plt (×10 ⁴ /μl)	23.9 ± 8.2	28.1 ± 10.2	0.0577
MPV (fl)	8.69 ± 0.93	10.92 ± 1.59	0.0538
sE-selectin (ng/mL)	51 ± 22	66 ± 29	0.0414*
sVCAM-1 (ng/ml)	1421 ± 733	1678 ± 925	0.0322*
PAI-1 (ng/mL)	25.1 ± 6.3	41.4 ± 8.1	0.0013*
MCP-1 (pg mL)	439 ± 112	482 ± 10.2	0.0105*
sCD14 (μg/mL)	3.7 ± 0.9	4.3 ± 1.6	0.0436*
MDMP (ev/μl)	50.2 ± 7.8	63.9 ± 15.1	0.0047*

Notes: Data are shown as mean ± SD. P-value, non-high FXIIIa group versus high FXIIIa group. *Indicates statistical significance (P<0.05).

Abbreviations: BMI, body mass index; WBC, white blood cell; Hb, hemoglobin; RDW-SD, red blood cell distribution width-standard deviation; Plt, platelet count; MPV, mean platelet volume; FXIIIa, factor XIII activity; sE-selectin, soluble E-selectin; sVCAM-1, soluble VCAM-1; PAI-1, plasminogen activator inhibitor-1; MCP-1, monocyte chemoattractant peptide; sCD14, soluble CD14; MDMPs, monocyte-derived microparticles.

terms of CAT predictions thus far.^{34–39} Zöller et al³⁴ reported that RDW-SD is associated with long-term incidence of the first event of VTE among middle-aged subjects, although not necessarily cancer. Other reports suggest that MPV is associated with VTE risk and survival in cancer patients.^{35–37} In the present study, we observed the high level of RDW-SD, MPV, sE-selectin, sVCAM-1, PAI-1, MCP-1 and sCD14 in cancer patients, although we could not recognize the significance of these markers in

**Figure 2** Kaplan–Meier curves of overall survival of non-high FXIIIa and high FXIIIa patient groups.

Abbreviation: FXIIIa, factor XIII activity.

CAT. However, an interesting marker was MDMP, because MPs could associate with CAT.^{38–43}

MDMPs contribute to the development of thrombosis at sites of vascular injury, since they express TF and enhance the exogenous tract of coagulation.⁴⁴ The binding of these MDMPs to activated endothelial cells may promote the accumulation of tissue factor and localize thrombin generation, resulting in the development of thrombosis.^{34,45} Some previous reports demonstrated the importance of tumor-derived MPs in CAT or the increased levels of TF-positive MPs in cancer patients with VTE compared with cancer patients without VTE.^{39–43} Furthermore, prospective studies suggested that high levels of TF-positive MPs activity may predict VTE in cancer patients.^{37–39} A meta-analysis by Cui et al³⁸ demonstrated the increased presence of TF-positive MPs that represented an increased risk of CAT with overall odds of 1.76. In addition, the role of TF-positive MPs originating from tumor cells in CAT development has been clearly shown in human pancreatic BxPc-3 cells orthotopically grown in nude mice.^{46,47} Thus, TF-positive MPs including MDMPs have an important role in CAT. Interestingly, in the present study, MDMP significantly increased in cancer patients compared with healthy controls. However, CAT appears to be involved in the mechanism of TF-independent MDMP.⁴⁸ This suggests that it is necessary to consider another role of MDMP other than coagulofibrinolytic imbalance in CAT as a future potential therapeutic target.

Abnormal FXIIIa appears to cause thrombotic states such as cardiovascular diseases.^{18,49,50} The same abnormal activity has been reported in cancer patients.^{17,20} A study in non-small cell lung cancer found that FXIIIa levels in advanced-stage patients are higher than those in healthy controls. These patients indicated that FXIIIa expression could potentially be used as a predictive marker of advanced non-small cell lung cancer.²⁰ In the present study, FXIIIa was significantly increased in cancer patients compared with healthy controls. In the present study, the frequency of patient with advanced cancer was 34% in ML, 45% in MM and 56% in LC. Unfortunately, we could not confirm a significant elevation of FXIIIa in these advanced cases. Therefore, the expression of FXIIIa by tumor-infiltrating macrophages was not determined. In the present study, MCP-1, sCD14 and MDMPs were higher in cancer patients than in non-cancerous controls. In addition, the levels of these markers were significantly increased in the high-FXIIIa group. These findings suggest that the association of monocytes and FXIIIa occurs in cancer

patients, resulting in the poor prognosis of the high-FXIIIa cancer patients in our Kaplan–Meier analysis. However, the role of FXIII in CAT is still unclear, and the relationship between FXIII and cancer needs to be further elucidated.

Conclusions

In conclusion, RDW-SD, MPV, FXIIIa, sE-selectin, sVCAM-1, PAI-1, MCP-1, sCD14, and MDMP levels were higher in cancer patients than in non-cancerous controls. sVCAM-1, PAI-1, MCP-1, sCD14, and MDMPs were significantly correlated with FXIIIa by multivariate analysis in cancer patients. In addition, sE-selectin, sVCAM-1, PAI-1, MCP-1, sCD14, and MDMP levels were increased significantly in the high FXIIIa group. Finally, the survival rate of the high-FXIIIa group was significantly poor in the Kaplan–Meier analysis. Therefore, abnormal levels of FXIIIa and MDMPs may offer promise as poor prognostic factors in cancer patients.

Nevertheless, this study has some limitations. First, we could not confirm a direct relationship of FXIIIa or MDMPs in our thrombotic patients. Second, we did not attempt a more accurate method than flow cytometry to detect MDMPs. For example, antigenic detection of TF-positive MDMPs by scanning confocal microscopy may be appropriate.^{48,51,52} These limitations are issues to be considered in the future.

Abbreviations

RDW-SD, red blood cell distribution width-standard deviation; MPV, mean platelet volume; FXIIIa, factor XIII activity; MCP-1, monocyte chemotactic peptide-1; sCD14, soluble CD14; BMI, body mass index; TF, tissue factor; sE-selectin, soluble E-selectin; sVCAM-1, soluble vascular cell adhesion molecule-1; PAI-1, plasminogen activator inhibitor-1; MDMP, monocyte-derived microparticle; LC, lung cancer; ML, malignant lymphoma; MM, multiple myeloma; CAT, cancer-associated thrombosis; VTE, venous thromboembolism.

Acknowledgment

We thank H. Nikki March, PhD, from Edanz Group for editing a draft of this manuscript.

Author Contributions

All authors contributed to data analysis, drafting and revising the article, gave final approval of the version to be published, and agree to be accountable for all aspects of the work.

Disclosure

The authors declare that there are no conflicts of interest.

References

- Koene RJ, Prizment AE, Blaes A, Konety SH. Shared risk factors in cardiovascular disease and cancer. *Circulation*. 2016;133(11):1104–1114. doi:10.1161/CIRCULATIONAHA.115.020406
- Bonnie KY. Cardio-oncology. In: Braunwald E, editor. *Heart Disease*. 11th ed. Philadelphia: Saunders; 2018:1641–1650.
- Chang HM, Okwuosa TM, Scarabelli T, Moudgil R, Yeh ETH. Cardiovascular complications of cancer therapy: best practices in diagnosis, prevention, and management-part 2. *J Am Coll Cardiol*. 2017;70(20):2552–2565. doi:10.1016/j.jacc.2017.09.1095
- Okwuosa TM, Prabhu N, Patel H, et al. The cardiologist and the cancer patient: challenges to cardio-oncology (or onco-cardiology) and call to action. *J Am Coll Cardiol*. 2018;72(2):228–232. doi:10.1016/j.jacc.2018.04.043
- Edwards BK, Noone AM, Mariotto AB, et al. Annual report to the nation on the status of cancer, 1975–2010, featuring prevalence of comorbidity and impact on survival among persons with lung, colorectal, breast, or prostate cancer. *Cancer*. 2014;120(9):1290–1314. doi:10.1002/ncr.28509
- Lyman GH, Khorana AA, Falanga A, et al. American Society of Clinical Oncology guideline: recommendations for venous thromboembolism prophylaxis and treatment in patients with cancer. *J Clin Oncol*. 2007;25(34):5490–5505. doi:10.1200/JCO.2007.14.1283
- Khorana AA, Francis CW, Culakova E, Kuderer NM, Lyman GH. Thromboembolism is a leading cause of death in cancer patients receiving outpatient chemotherapy. *J Thromb Haemost*. 2007;5(3):632–634. doi:10.1111/j.1538-7836.2007.02374.x
- Khorana AA. Venous thromboembolism and prognosis in cancer. *Thromb Res*. 2010;125(6):490–493. doi:10.1016/j.thromres.2009.12.023
- Mukai M, Komori K, Oka T. Mechanism and management of cancer chemotherapy-induced atherosclerosis. *J Atheroscler Thromb*. 2018;25(10):994–1002. doi:10.5551/jat.RV17027
- Muszbec L, Bereczky Z, Bagoly Z, et al. Factor XIII: a coagulation factor with multiple plasmatic and cellular functions. *Physiol Rev*. 2011;91(3):931–972.
- Ichinose A. Factor XIII is a key molecule at the intersection of coagulation and fibrinolysis as well as inflammation and infection control. *Int J Hematol*. 2012;95(4):362–370. doi:10.1007/s12185-012-1064-3
- Smith KA, Pease RJ, Avery CA, et al. The activation peptide cleft exposed by thrombin cleavage of FXIII-A₂ contains a recognition site for the fibrinogen α chain. *Blood*. 2013;121(11):2117–2126. doi:10.1182/blood-2012-07-446393
- Fraser SR, Booth NA, Mutch NJ. The antifibrinolytic function of factor XIII is exclusively expressed through 2-antiplasmin cross-linking. *Blood*. 2011;117(23):6371–6374.
- Mitchell JL, Lionikiene AS, Fraser SR, et al. Functional factor XIII-A is exposed on the stimulated platelet surface. *Blood*. 2014;124(26):3982–3990. doi:10.1182/blood-2014-06-583070
- Schroeder V, Kohler HP. New developments in the area of factor XIII. *J Thromb Haemost*. 2013;11(2):234–244. doi:10.1111/jth.12074
- Tahlan A, Ahluwalia J. Factor XIII: congenital deficiency factor XIII, acquired deficiency, factor XIII A-subunit, and factor XIII B-subunit. *Arch Pathol Lab Med*. 2014;138(2):278–281. doi:10.5858/arpa.2012-0639-RS
- Shi DY, Wang SJ. Advances of coagulation factor XIII. *Chin Med J*. 2017;130(2):219–223. doi:10.4103/0366-6999.198007
- Kreutz RP, Schmeisser G, Schaffter A, et al. Prediction of ischemic events after percutaneous coronary intervention: thrombelastography profiles and factor XIIIa activity. *TH Open*. 2018;2(2):e173–181. doi:10.1055/s-0038-1645876

19. Gonçalves E, Lopes da Silva R, Varandas J, Diniz MJ. Acute promyelocytic leukaemia associated factor XIII deficiency presenting as retro-bulbar haematoma. *Thromb Res.* 2012;129(6):810–811. doi:10.1016/j.thromres.2012.03.008
20. Lee SH, Suh IB, Lee EJ, et al. Relationships of coagulation factor XIII activity with cell-type and stage of non-small cell lung cancer. *Yonsei Med J.* 2013;54(6):1394–1399. doi:10.3349/ymj.2013.54.6.1394
21. Omoto S, Nomura S, Shouzu A, et al. Detection of monocyte-derived microparticles in patients with type II diabetes mellitus. *Diabetologia.* 2002;45(4):550–555. doi:10.1007/s00125-001-0772-7
22. Matsumoto N, Nomura S, Kamihata H, et al. Increased level of oxidized LDL-dependent monocyte-derived microparticles in acute coronary syndrome. *Thromb Haemost.* 2004;91(1):146–154. doi:10.1160/TH03-04-0247
23. Nomura S, Shouzu A, Omoto S, et al. Effect of valsartan on monocyte/endothelial cell activation markers and adiponectin in hypertensive patients with type 2 diabetes mellitus. *Thromb Res.* 2006;117(4):385–392. doi:10.1016/j.thromres.2005.04.008
24. Colotta F, Borre A, Wang JM, et al. Expression of monocyte chemotactic cytokine by human mononuclear phagocytes. *J Immunol.* 1992;148(3):760–765.
25. Fries JW, Williams AJ, Atkins RC, et al. Expression of VCAM-1 and E-selectin in an in vivo model of endothelial activation. *Am J Pathol.* 1993;143(3):725–737.
26. Jaffe ES. Introduction and overview of the classification of lymphoid neoplasms. In: Swerdlow SH, editor. *WHO Classification of Tumors of Haematopoietic and Lymphoid Tissues.* Lyon: IARC; 2017:pp190–198.
27. Cheson BD, Fisher RI, Barrington SF, et al. Recommendations for initial evaluation, staging, and response assessment of Hodgkin and non-Hodgkin lymphoma: the Lugano classification. *J Clin Oncol.* 2014;32(27):3059–3068. doi:10.1200/JCO.2013.54.8800
28. Greipp PR, San Miguel J, Durie BG, et al. International staging system for multiple myeloma. *J Clin Oncol.* 2005;23(15):3412–3420. doi:10.1200/JCO.2005.04.242
29. Rami-Porta R, Bolejack V, Giroux DJ, et al. The IASLC lung cancer staging project: the new database to inform the eighth edition of the TNM classification of lung cancer. *J Thorac Oncol.* 2014;9(11):1618–1624. doi:10.1097/JTO.0000000000000334
30. Fickenscher K, Aab A, Stuber W. A photometric assay for blood coagulation factor XIII. *Thromb Haemost.* 1991;65(5):535–540. doi:10.1055/s-0038-1648185
31. Rajkumar SV, Dimopoulos MA, Palumbo A, et al. International Myeloma Working Group updated criteria for the diagnosis of multiple myeloma. *Lancet Oncol.* 2014;15(12):e538–548. doi:10.1016/S1470-2045(14)70442-5
32. Varki A. Trousseau's syndrome: multiple definition and multiple mechanisms. *Blood.* 2007;110(6):1723–1729. doi:10.1182/blood-2006-10-053736
33. Ikushima S, Ono R, Fukuda K, et al. Trousseau's syndrome: cancer-associated thrombosis. *Jpn J Clin Oncol.* 2016;46(3):204–208. doi:10.1093/jjco/hyv165
34. Zöller B, Melander O, Svensson P, Engström G. Red cell distribution width and risk for venous thromboembolism: a population-based cohort study. *Thromb Res.* 2014;133(3):334–339. doi:10.1016/j.thromres.2013.12.013
35. Riedel J, Kaider A, Reitter EM, et al. Association of mean platelet volume with risk of venous thromboembolism and mortality in patients with cancer. Results from the Vienna Cancer and Thrombosis Study (CATS). *Thromb Haemost.* 2014;111(4):670–678. doi:10.1160/TH13-07-0603
36. Díaz JM, Boietti BR, Vazquez FJ, et al. Mean platelet volume as a prognostic factor for venous thromboembolic disease. *Rev Med Chil.* 2019;147(2):145–152. doi:10.4067/s0034-98872019000200145
37. Inagaki N, Kibata K, Tamaki T, Shimizu T, Nomura S. Prognostic impact of the mean platelet volume/platelet count ratio in terms of survival in advanced non-small cell lung cancer. *Lung Cancer.* 2015;83(1):97–101. doi:10.1016/j.lungcan.2013.08.020
38. Cui CJ, Wang GJ, Yang S, Huang SK, Qiao R, Cui W. Tissue factor-bearing MPs and the risk of venous thrombosis in cancer patients: a meta-analysis. *Sci Rep.* 2018;8(1):1675. doi:10.1038/s41598-018-19889-8
39. Tesselaar ME, Romijn FP, Van Der Linden IK, Prins FA, Bertina RM, Osanto S. Microparticle-associated tissue factor activity: a link between cancer and thrombosis? *J Thromb Haemost.* 2007;5(3):520–527. doi:10.1111/j.1538-7836.2007.02369.x
40. Zwicker JJ, Liebman HA, Neuberg D, et al. Tumor-derived tissue factor-bearing microparticles are associated with venous thromboembolic events in malignancy. *Clin Cancer Res.* 2009;15(22):6830–6840. doi:10.1158/1078-0432.CCR-09-0371
41. Manly DA, Wang J, Glover SL, et al. Increased microparticle tissue factor activity in cancer patients with venous thromboembolism. *Thromb Res.* 2010;125(6):511–512. doi:10.1016/j.thromres.2009.09.019
42. Campello E, Spiezal L, Radu CM, et al. Endothelial, platelet, and tissue factor-bearing microparticles in cancer patients with and without venous thromboembolism. *Thromb Res.* 2011;127(5):473–477. doi:10.1016/j.thromres.2011.01.002
43. Geddings JE, Mackman N. Tumor-derived tissue factor-positive microparticles and venous thrombosis in cancer patients. *Blood.* 2013;122(11):1873–1880. doi:10.1182/blood-2013-04-460139
44. Falati S, Liu Q, Gross P, et al. Accumulation of tissue factor into developing thrombi in vivo is dependent upon microparticle P-selectin glycoprotein ligand 1 and platelet P-selectin. *J Exp Med.* 2003;197(11):1585–1598. doi:10.1084/jem.20021868
45. Del Conde I, Shrimpton CN, Thiagarajan P, López JA. Tissue-factor-bearing microvesicles arise from lipid rafts and fuse with activated platelets to initiate coagulation. *Blood.* 2005;106(5):1604–1611. doi:10.1182/blood-2004-03-1095
46. Pang W, Su J, Wand Y, et al. Pancreatic cancer-secreted miR-155 implicates in the conversion from normal fibroblasts to cancer-associated fibroblasts. *Cancer Sci.* 2015;106(10):1362–1369. doi:10.1111/cas.12747
47. Geddings JE, Hisada Y, Boulaftali Y, et al. Tissue factor-positive tumor microvesicles activate platelets and enhance thrombosis in mice. *J Thromb Haemost.* 2016;14(1):153–166. doi:10.1111/jth.13181
48. Zarà M, Guidetti GF, Camera M, et al. Biology and role of extracellular vesicle (EVs) in the pathogenesis of thrombosis. *Int J Mol Sci.* 2019;20(11):E2840. doi:10.3390/ijms20112840
49. Berczky Z, Balogh E, Katona E, Czuriga I, Edes I, Muszbek L. Elevated factor XIII level and the risk of myocardial infarction in women. *Haematologica.* 2007;92(2):287–288. doi:10.3324/haematol.10647
50. Ambroziak M, Kurylowicz A, Budaj A. Increased coagulation factor XIII activity but not genetic variants of coagulation factors is associated with myocardial infarction in young patients. *J Thromb Thrombolys.* 2019;48(3):519–527. doi:10.1007/s11239-019-01856-3
51. Owens AP 3rd, Mackman N. Microparticles in hemostasis and thrombosis. *Cir Res.* 2011;108(10):1284–1297. doi:10.1161/CIRCRESAHA.110.233056
52. Weiss R, Gröger M, Rauscher S, et al. Differential interaction of platelet-derived extracellular vesicles with leukocyte subsets in human whole blood. *Sci Rep.* 2018;8(1):6598. doi:10.1038/s41598-018-25047-x

Vascular Health and Risk Management

Dovepress

Publish your work in this journal

Vascular Health and Risk Management is an international, peer-reviewed journal of therapeutics and risk management, focusing on concise rapid reporting of clinical studies on the processes involved in the maintenance of vascular health; the monitoring, prevention and treatment of vascular disease and its sequelae; and the involvement

of metabolic disorders, particularly diabetes. This journal is indexed on PubMed Central and MedLine. The manuscript management system is completely online and includes a very quick and fair peer-review system, which is all easy to use. Visit <http://www.dovepress.com/testimonials.php> to read real quotes from published authors.

Submit your manuscript here: <https://www.dovepress.com/vascular-health-and-risk-management-journal>