



ORIGINAL RESEARCH

Unidirectional response to bidirectional selection on body size. I. Phenotypic, life-history, and endocrine responses

Clémentine Renneville¹ | Alexis Millot² | Simon Agostini² | David Carmignac¹ | Gersende Maugars^{3,4} | Sylvie Dufour³ | Arnaud Le Rouzic⁵  | Eric Edeline^{1,6} 

¹Sorbonne Université, Université Paris Diderot, UPEC, CNRS, INRAE, IRD, Institut d'Ecologie et des Sciences de l'Environnement de Paris (iEES-Paris), Paris, France

²Ecole Normale Supérieure, PSL Research University, Département de biologie, CNRS, UMS 3194, Centre de recherche en écologie expérimentale et prédictive (CEREEP-Ecotron IleDeFrance), Saint-Pierre-lès-Nemours, France

³Muséum National d'Histoire Naturelle, UMR BOREA Biologie des Organismes et Ecosystèmes Aquatiques, CNRS 7208, IRD 207, SU, UCN, UA, Paris, France

⁴Norwegian University of Life Sciences, Faculty of Veterinary Medicine, Physiology Unit, Oslo, Norway

⁵Laboratoire Évolution, Génomes, Comportement, Écologie, CNRS, IRD, Univ. Paris-Saclay, Gif-sur-Yvette, France

⁶ESE, Ecology and Ecosystem Health, INRAE, Agrocampus Ouest, Rennes, France

Correspondence

Eric Edeline, ESE, Ecology and Ecosystem Health, INRAE|Agrocampus Ouest, Rennes, France.

Email: Eric.Edeline@inrae.fr

Funding information

This work has benefited from technical and human resources provided by CEREEP-Ecotron IleDeFrance (CNRS/ENS UMS 3194) as well as financial support from the Regional Council of Ile-de-France under the DIM Program R2DS bearing the references I-05-098/R and 2015-1657. It has received a support under the program "Investissements d'Avenir" launched by the French government and implemented by ANR with the references ANR-10-EQPX-13-01 Planaqua and ANR-11-INBS-0001 AnaEE France. CR, GM, ALR, and EE also acknowledge support from the Research Council of Norway (projects EvoSize RCN 251307/F20 and REEF RCN 255601/E40) and from IDEX SUPER (project Convergences MADREPOP J14U257). EE was supported by a research grant from Rennes Métropole (AIS program—project number 18C0356).

Abstract

Anthropogenic perturbations such as harvesting often select against a large body size and are predicted to induce rapid evolution toward smaller body sizes and earlier maturation. However, body-size evolvability and, hence, adaptability to anthropogenic perturbations remain seldom evaluated in wild populations. Here, we use a laboratory experiment over 6 generations to measure the ability of wild-caught medaka fish (*Oryzias latipes*) to evolve in response to bidirectional size-dependent selection mimicking opposite harvest regimes. Specifically, we imposed selection against a small body size (Large line), against a large body size (Small line) or random selection (Control line), and measured correlated responses across multiple phenotypic, life-history, and endocrine traits. As expected, the Large line evolved faster somatic growth and delayed maturation, but also evolved smaller body sizes at hatch, with no change in average levels of pituitary gene expressions of luteinizing, follicle-stimulating, or growth hormones (GH). In contrast, the Small medaka line was unable to evolve smaller body sizes or earlier maturation, but evolved smaller body sizes at hatch and showed marginally significant signs of increased reproductive investment, including larger egg sizes and elevated pituitary GH production. Natural selection on medaka body size was too weak to significantly hinder the effect of artificial selection, indicating that the asymmetric body-size response to size-dependent selection reflected an asymmetry in body-size evolvability. Our results show that trait evolvability may be contingent upon the direction of selection and that a detailed knowledge of trait evolutionary potential is needed to forecast population response to anthropogenic change.

This is an open access article under the terms of the Creative Commons Attribution License, which permits use, distribution and reproduction in any medium, provided the original work is properly cited.

© 2020 The Authors. *Ecology and Evolution* published by John Wiley & Sons Ltd

KEYWORDS

anthropogenic selection, body size, evolvability, fisheries, life history

1 | INTRODUCTION

Human activities often converge toward selecting against large-bodied individuals in animal populations, mainly through harvesting, habitat fragmentation, and climate warming (Edeline, 2016). In this context, the dynamics of wild populations may critically rely on their capacity to evolve in response to size-dependent selection.

Whether and how wild populations can respond to anthropogenic size-dependent selection have been mostly explored in the context of fisheries, which are often highly size-selective (Carlson et al., 2007; Kuparinen, Kuikka, & Merilä, 2009; Lagler, 1968; Law, 2000). Harvesting large-bodied individuals is predicted to induce adaptive evolution toward earlier maturation through reduced life expectancy and, at the same time, toward slower somatic growth through selection against a large body size at a given age (Heino, Díaz Pauli, & Dieckmann, 2015). Paradoxically, however, selection for an earlier maturation may also result in evolution of faster somatic growth, which allows for an earlier maturation (Diaz Pauli, Kolding, Jeyakanth, & Heino, 2017; Dunlop, Heino, & Dieckmann, 2009; Eikeset et al., 2016). This result highlights the importance of considering trait correlations and multivariate phenotypes in evolutionary biology.

In the wild, fishing has been associated with phenotypic changes toward earlier maturation at a smaller body size and/or toward slower growth rates (see reviews by Fenberg & Roy, 2008; Heino et al., 2015; Kuparinen & Merilä, 2007; Law, 2000; Trippel, 1995). Yet, cases of stocks with no phenotypic response to fishing are also reported (Devine & Heino, 2011; Marty, Rochet, & Ernande, 2014; Silva, Faria, & Nunes, 2013), suggesting that harvested populations might not always be able to respond to harvest-induced selection. Studies based on data from the wild, however, are often criticized for problems in measuring actual selection pressures (but see Carlson et al., 2007; Edeline et al., 2007; Kendall, Hard, & Quinn, 2009), in disentangling the effects on mean trait values of size-selective mortality versus evolutionary changes (Hairston, Ellner, Geber, Yoshida, & Fox, 2005), or in controlling for the confounding effects of phenotypic plasticity (Heino, Dieckmann, & Godø, 2002). Hence, there is still debate as to whether changes (or absence thereof) toward earlier maturation and slower somatic growth in exploited populations are genetic (Borrell, 2013) or are occurring rapidly enough to influence population dynamics and thus probability of population persistence (Diaz Pauli & Heino, 2014). Experimental harvesting experiments in the laboratory are potentially free of such problems because they make it possible to accurately target the traits under selection, to fully control the pattern and intensity of artificial selection, and to standardize environmental variation so that the effects of phenotypic plasticity are alleviated.

Size-selective experiments have been performed on model organisms such as *Drosophila melanogaster* (e.g., Partridge, Langelan, Fowler, Zwaan, & French, 1999), chicken *Gallus gallus* (Dunnington, Honaker, McGilliard, & Siegel, 2013), or mice *Mus musculus* (e.g., MacArthur, 1949). Often, selection is bidirectional, that is, is performed at random (Control line), against a small body size (Large line) and against a large body size (Small line, mimicking the effects of harvesting). Results from these experiments show that body-size response to selection may sometimes be asymmetric, with either the Large or Small lines showing slower, or sometimes no or halted response to selection (Falconer & Mackay, 1996 and references therein; Dunnington et al., 2013; Lynch & Walsh, 2018 and references therein). Additionally, selection on body size may be associated with changes in other traits. For instance, selection for increased thorax length in *D. melanogaster* was associated with an increase in larval development time and no change in somatic growth rate, while selection for reduced thorax length was associated with reduced growth rate but no change in duration of larval development (Partridge et al., 1999). Similarly, experiments specifically designed to simulate harvesting on wild populations of model or nonmodel organisms have shown that size at age or size at maturity in populations subject to small- versus large-sized harvesting may (Amaral & Johnston, 2012; Cameron, O'Sullivan, Reynolds, Piernney, & Benton, 2013; Conover & Munch, 2002; Edley & Law, 1988; van Wijk et al., 2013) or may not (Uusi-Heikkilä et al., 2015) evolve in the direction imposed by selection (see the Discussion for a more detailed treatment of these harvest-simulating experiments). Hence, so far our knowledge of whether and how exploited populations can respond to size-selective harvesting remain limited.

To contribute filling this gap in our knowledge, we examined the ability of a wild population of medaka fish (*Oryzias latipes*) to respond to bidirectional size-dependent harvesting in the laboratory. Specifically, we selected medaka randomly (Control line), against a large body size (Small line), and against a small body size (Large line) during 2.5 years (30 months, 6 medaka generations), measuring at each generation a total of 14 phenotypic, life-history, and neuroendocrine traits.

We made three specific predictions for medaka response to size-dependent selection: (a) Compared to the Control line, medaka from the Small line should evolve slower somatic growth rates. We predicted an opposite pattern in the Large medaka line. (b) Selection on body size has often been shown to induce correlated responses of reproductive traits and larval viability (e.g., Walsh, Munch, Chiba, & Conover, 2006). Therefore, we predicted that evolution of somatic growth in the Small medaka line should be paralleled by evolution toward increased reproductive investment, which may result in earlier maturation and/or higher fecundity at a given body size and/or larger egg sizes (Roff, 1992), and/or toward reduced size at hatch and larval

survival (Walsh et al., 2006). We predicted an opposite response in the Large medaka line. (c) The neuroendocrine control of vertebrate body growth and reproduction involves production of the growth hormone (GH), luteinizing hormone (LH), and follicle-stimulating hormone (FSH) in the pituitary (Rousseau & Dufour, 2007; Zohar, Munoz-Cueto, Elizur, & Kah, 2010). Hence, compared to Control line we predicted altered GH, LH, and FSH expression levels in the pituitary, with potentially opposite alteration patterns in the Small and Large medaka lines. Our results validate prediction (a), but in the Large medaka line only, because the Small line did not show any body-size response to selection. Prediction (b) was validated in the Large line, but only partially in the Small line that did not mature earlier but showed signs of increased reproductive investment. Finally, prediction (c) was mainly not supported since only the pituitary expression GH showed a marginally significant response to size-dependent selection.

2 | MATERIALS AND METHODS

2.1 | Fish origin and maintenance

Our start medaka population descended from 100 wild-caught individuals sampled from a single population in Kiyosu (Toyohashi, Aichi Prefecture, Japan) in June 2011. The genome of the Kiyosu population is free of any significant structure and shows a high degree of polymorphism, indicating no recent population bottleneck (Spivakov et al., 2014). These 100 breeders were maintained in five 20 L aquariums, and eggs were collected daily from July to September 2011. Hatched larvae were stocked in six 10 m³ outdoor ponds.

In 2013, around 60 adult fish were transferred from outdoor ponds to the laboratory where all the 9 subsequent generations (dubbed F_{-1} to F_7) were maintained under constant environmental conditions (common garden): 3 L aquariums connected to a continuous flow-through system ensuring good water quality, cycle of 14h of light–10h of darkness, and temperature maintained between 26 and 27.5°C. Fish were fed ad libitum with a mixed diet of dry food (Marin Start, Le Gouessant Aquaculture) delivered 4 times per day using automatic microfeeders (Eheim 3,581), and live food (*Artemia salina* nauplii and/or *Turbatrix acetii*) manually delivered once a day, 5 days per week. These light, temperature, and food conditions provide optimal growth and maturation conditions to medaka (Kinoshita, Murata, Naruse, & Tanaka, 2009).

2.2 | Breeding design, pedigree, and fish numbers

Prior to starting selection, we bred medaka during two generations in the laboratory to alleviate maternal and grand maternal effects (a diagram of the experimental design is provided in Appendix 2). Fish initially transferred from outdoor ponds to the laboratory were allowed to mate randomly in groups of 3–6 fish per aquarium to produce the F_{-1} generation. In F_{-1} and F_0 , we randomly mated 54 (F_{-1})

and 56 (F_0) pairs, respectively (Appendix 2), to break any genetic structure or linkage disequilibrium that could remain from possible assortative mating in the wild population (Lynch & Walsh, 2018). Each generation, eggs from each breeding pair were pooled for incubation and larvae from the same clutch were transferred to the same growth aquarium so as to form sibling families. This way, we were able to keep track of individual pedigrees and to estimate individual inbreeding rate as $2k-1$, where k is one's kinship coefficient with oneself (as calculated from the pedigree data using the kinship2 R package (Sinnwell, Therneau, & Schaid, 2014)).

Offspring from multiple breeding pairs were never mixed in the same aquarium (not to break the pedigree), and the aquarium and the sibling family effects were confounded. Occasionally, a breeding pair produced many progeny that were spread across two different aquariums (118 breeding pairs, out of 375 pairs in total, produced two aquariums of progeny). Aquariums were randomly spread across two different racks such that the selected lines shared the same environmental conditions. Larvae were initially introduced in their aquariums at a controlled density of 19.6 ± 1.6 , 19.2 ± 1.9 , and 19.8 ± 1.0 (mean \pm SD) larvae per aquarium in the Control, Small, and Large lines, respectively. Highest densities were suppressed at 2 weeks posthatch to reach 17.0 ± 2.3 , 16.1 ± 2.1 , and 17.7 ± 2.0 individuals per aquarium. Densities were not manipulated at later ages. At 76.7 ± 4.4 SD days posthatch (hereafter 75 dph for short), densities were 15.0 ± 2.4 , 14.2 ± 2.1 , and 15.6 ± 2.4 in the Control, Small, and Large lines, respectively.

2.3 | Selection procedure

We proceeded with selection on the F_1 – F_7 generations from February 2014 to August 2016 (30 months, Appendix 2). A size-dependent selection differential was applied both on families at 60 dph and on mature individuals at 75 dph, an age at which 86% of the fish were mature on average (for dynamics of maturity in each line, see Le Rouzic et al., in press).

At 60 dph, we discarded families of less than 10 individuals to avoid confounding density effects on phenotypes. This procedure generated significant selection for a higher fecundity (overdispersed Bernoulli GLM, discarded \sim fecundity, p -value $< .01$) and for higher survival rate from egg to age 15 dph (p -value $< .005$), but not for a larger or smaller body length (p -value = .296). Among the remaining families, we kept 10 families at random (Control line) or that had the smallest (Small line) or largest (Large line) average standard body length.

At 75 dph, we individually selected breeders among mature fish based on their individual standard body length and precluded brother–sister mating. Specifically, we kept in each family 4 mature fish (2 males and 2 females) that were paired with breeders from other families to form the subsequent generation (20 breeding pairs/line/generation, Appendix 2). We formed breeding pairs so as to minimize inbreeding using a computer resampling procedure (selection of the pairing pattern minimizing the median inbreeding coefficient). Assuming no

inbreeding in F_1 , mean inbreeding rate was 9.6% (± 1.9 SD) by F_7 . This corresponds to an average effective population size ("inbreeding effective numbers" sensu Crow & Kimura, 1970) of $N_e = 30.2$.

Each generation, selection was performed on 636 fish on average (212 fish/line), and the selection procedure resulted in keeping on average 12% of individuals per line (number of breeders/ total number of fish before selection at 75 dph). We calculated the resultant selection differentials as the difference in maturity probability (i.e., proportion of mature fish) and standard body length after and before selection. Selection differentials across generations F_1 – F_6 for maturity probability and standard body length were +0.13 (0.12 SD) and +0.68 mm (0.18 mm SD) in the Control line, +0.10 (0.08 SD) and –1.06 mm (0.55 mm SD) in the Small line, and +0.13 (0.08 SD) and +2.05 mm (0.55 mm SD) in the Large line, respectively.

2.4 | Phenotyping

Eggs from each breeding pair were collected during a period corresponding to mother's 88–92 dph. Eggs were counted and photographed, and ImageJ was then used to measure their individual egg perimeters (9,795 eggs measured from F_1 to F_7). Hatched larvae were collected during a 5-day time window so as to synchronize hatching dates as much as possible. Birthdate was the median hatching date of each sibling family, and all siblings were thus assigned the same age.

At 0 (hatching), 15, 60, and 75 dph, each single individual was photographed, and then ImageJ was used to measure standard body length (from the tip of the snout to the base of the caudal fin, 16,808 individual measurements from F_1 to F_7). Additionally, each individual at each phenotyping was sexed as immature (I), female (F), or male (M) according to their secondary sexual characters (Yamamoto, 1975), which was a nondestructive proxy for the onset of maturity. All fish manipulations were performed after anesthesia in tricaine methanesulfonate (MS222), except at 0 and 15 dph when larvae and juveniles were manipulated with a Pasteur pipette and photographed in a droplet.

2.5 | Pituitary expression of candidate genes

An enzyme-linked immunosorbent assay (ELISA) is not available for medaka GH and ELISAs, in addition of being much less sensitive than reverse transcription quantitative real-time polymerase chain reaction (RT-qPCR), require plasma volumes that are too large to allow individual measurements in medaka. Hence, as a first approach to uncovering the molecular regulation of adaptive life-history evolution in medaka, we used RT-qPCR to measure mRNA levels of candidate genes in individual pituitaries. Specifically, we measured pituitary mRNA levels of β -subunits of gonadotropin hormones (LH β and FSH β) and GH. F_0 preliminary data indicated that the onset of secondary sexual characteristics occurred roughly between 40 and 60 dph, and we chose to dissect fish at 40 dph so as to sample fish at the initiation of puberty.

In each generation from F_1 to F_7 , 10 to 15 fish per line (233 fish in total) were phenotyped as described above, sacrificed and dissected under a binocular microscope for the pituitary which was immediately immersed in 250 μ l TRIzol (Ambion) and stored at -20°C .

After sample homogenization by agitation (15 s vortexing), total RNA was extracted according to the manufacturer's indications, suspended in 10 μ l RNase-free water, and treated with DNase I (Dnase I recombinant RNase-free, Roche Diagnostics). Then, cDNA was produced from 5 μ l of total RNA using RT Superscript III (RT Superscript III First Strand cDNA Synthesis Kit; Invitrogen, Life Technologies) and random hexamer primers (50 ng; Invitrogen, Life Technologies), at 50°C for 60 min after an initial step of 25°C for 10 min. Medaka-specific primer sets for FSH were designed with primer3 software (Koressaar & Remm, 2007) on two successive exons or on exon junctions. Gene-specific primer sets for LH β , FSH β , GH, and actin- β (used as reference gene to correct for technical noise) were previously designed (see Appendix 1). Efficiency and amplification specificity were checked for each primer set. The sets with the highest efficiency were chosen for the following quantification experiment.

Messengers RNAs were assayed using LightCycler System (LightCycler[®] device; Roche Diagnostics) with the LightCycler FastStart Master plus SYBR Green I Kit (Roche Diagnostics) as recommended by the manufacturer, from 4 μ l of diluted 1:10 cDNA samples and the specific primers concentrated at 500 nM (Eurofins). The PCR conditions were 95°C for 10 min followed by 50 cycles at 95°C for 5 s, 60°C for 10 s, and 72°C for 5 s.

Expression levels of mRNA for LH β , FSH β , GH, and actin- β in each individual fish were measured in duplicate using the "relative quantification" method (Applied Biosystems User Bulletin #2). Briefly, the standard relationships between fluorescence and gene-specific sample RNA concentrations were constructed using a bulk RNA pool, hereafter dubbed "calibrator." The LightCycler software estimated the number C_q of quantification cycles needed to reach the inflection point (second derivative equal to 0) of fluorescence amplification for a series of 7 calibrator volumes. From this, the software estimated the intercept and slope parameters for the gene-specific, linear relationship between log₁₀ calibrator volume and C_q . These linear relationships were then used to predict sample-specific mRNA expressions in log₁₀ calibrator volume units (i.e., "arbitrary" units) for LH β , FSH β , GH, and actin- β from their sample-specific C_q . At each PCR run, a known amount of the calibrator plus a blank (water) were measured for C_q so as to adjust for possible inter-run noise. Following standard practices, we used as input data relative pituitary gene expression, calculated as the natural logarithm of the ratio between mRNA expression for the interest gene and mRNA expression for actin- β (see Model 5 below). In particular, this approach corrects for the effects of variability in pituitary size.

2.6 | Data analyses

The aim of our statistical analyses was to estimate and test for an overall effect of the selected lines on traits, pooling data from

generations F_3 to F_7 and treating generation as a random effect. An archive containing datasets and scripts to reproduce analyses can be downloaded at <https://doi.org/10.5061/dryad.0cfxpwn05>.

2.6.1 | Standard body length at 75 dph

We modeled response to selection as the line effect on standard body length at 75 dph ($Sdl75$) of each individual i :

$$\begin{aligned} Sdl75_i &\sim N(\mu_i, \sigma^2) \\ \mu_i &= \alpha_{G[i]} + \alpha_{L[i]} + \alpha_{S[i]} + \beta_1 Age_i + \beta_2 Inb_i, \\ \alpha_G &\sim N(0, \sigma_G^2) \end{aligned} \tag{1}$$

where N is the normal distribution, subscripts $G[i]$, $L[i]$ and $S[i]$ denote effects of the generation (F_3 - F_7) treated as a normally distributed random effect, selected line (Small, Large, and Control), and sex (I, M, or F), respectively. Age is age in dph coded as a continuous variable, and Inb is individual inbreeding coefficient. Finally, σ^2 is residual variance and σ_G^2 is the variance of the normally distributed generation effect.

2.6.2 | Probabilistic maturation reaction norms

We visualized the effect of anthropogenic selection on the maturation process using probabilistic maturation reaction norms (PMRNs). This approach was developed to account for the plastic effects of juvenile somatic growth rate on the maturation process, such that a shift in the maturation reaction norm may be interpreted as an evolutionary shift in maturation (Heino & Dieckmann, 2008; Heino et al., 2002). PMRNs classically account for the effects of age and body length on maturation, but they may also be “higher dimensional” to account for the effects of body mass or individual somatic growth rate (e.g., Morita & Fukuwaka, 2006). Here, however, we neither weighed individual medaka nor followed individual growth trajectories. Therefore, we used classical age- and length-dependent PMRNs, which have been demonstrated to be as efficient as higher-dimensional PMRNs to detect evolutionary trends (Dieckmann & Heino, 2007).

For each medaka line, we computed age- and length-dependent PMRNs, defined as the age- and length-dependent 50% probability for an immature medaka to initiate maturity (as informed by the onset of secondary sexual characteristics), using the methods of Barot, Heino, O'Brien, and Dieckmann (2004) and Van Dooren, Tully, and Ferrière (2005). The methods consisted first in computing maturity “ogives” as:

$$\begin{aligned} y_i &\sim Bern(p_i) \\ \ln\left(\frac{p_i}{1-p_i}\right) &= \alpha_{G[i]} + \alpha_{L[i]} + \beta_{1,L[i]} Sdl_i + \beta_{2,L[i]} Age_i + \beta_3 Inb_i, \\ \alpha_G &\sim N(0, \sigma_G^2) \end{aligned} \tag{2}$$

where y_i is the maturity status of an individual fish i (0 or 1), $Bern$ is the Bernoulli distribution of “success” (maturity) probability p , and \ln is the

natural logarithm. Other subscripts or variables are as described above. By letting the effects of both Sdl and Age on p varying for each selected line, this model captured potential effects of selection on both the intercept and slope of the PMRN.

Second, we computed the maturation probability $m(a_\tau, s_\tau)$ at each growth increment τ as described by Barot et al. (2004):

$$m(a_\tau, s_\tau) = \frac{o(a_\tau, s_\tau) - o(a_{\tau-1}, s_{\tau-1})}{1 - o(a_{\tau-1}, s_{\tau-1})},$$

where $o(a_\tau, s_\tau)$ is age- and length-dependent maturity probability at the end of growth increment τ as predicted by Model 2. We did so for simulated slow, median, and fast growth curves (Harney, Van Dooren, Paterson, & Plaistow, 2013; Van Dooren et al., 2005).

Finally, we computed line-specific PMRNs as the age and length combination (a_τ, s_τ) at which maturation probability reached 50%, that is, as the age and length combination that satisfied the following condition (Harney et al., 2013; Van Dooren et al., 2005):

$$1 - \prod_{\tau=1}^t (1 - m(a_\tau, s_\tau)) = 0.5.$$

We estimated $m(a_\tau, s_\tau)$ for 200 growth increments τ equally spread between ages 0 and 87 dph. Full propagation of error distribution for $m(a_\tau, s_\tau)$ was obtained by iterating the procedure for each Markov chain Monte Carlo (MCMC) sample of the parameter set in Model 2.

2.6.3 | Survival

We tested for differential mortality among the selected medaka lines using models of the form:

$$\begin{aligned} N(t+1)_i &\sim Bin(N(t)_i, p_i) \\ \ln\left(\frac{p_i}{1-p_i}\right) &= \alpha_{L[i]} + \beta_1 Mo.inb_i + \beta_2 Fa.inb_i + \epsilon_i, \\ \epsilon_i &\sim N(0, \sigma_\epsilon^2) \end{aligned} \tag{3}$$

where $N(t+1)_i$ is the number of individuals still alive at time $t+1$ in sibling family i , Bin is the Binomial distribution, $Mo.inb$ is mother inbreeding coefficient, $Fa.inb$ is father inbreeding coefficient, and ϵ is an overdispersion effect accounting for the fact that observed variance was larger than canonical variance of the Binomial distribution. We fitted separately four models for t to $t+1$ steps corresponding to the egg-larvae (egg-to-0 dph), larvae-juvenile (0-to-15 dph), juvenile-adult (15-to-60 dph), and adult-adult (60-to-75 dph) transitions.

2.6.4 | Size-specific fertility and fecundity

Our aim here was to test for possible effects of size-dependent selection on medaka size-specific fecundity. Counts F of clutch size per

breeding pair i were zero-inflated Poisson-distributed and modeled as:

$$\begin{aligned}
 F_i &\sim \text{Pois}((1 - \pi_i)\lambda_i) \\
 \pi_i &\sim \text{Bern}(p_i) \\
 \ln(\lambda_i) &= \text{offset}_i + \alpha_{G[i]} + \alpha_{L[i]} + \beta_1 \text{Mo. inb}_i + \beta_2 \text{Fa. inb}_i + \beta_3 \text{Parent. sdl}_i + \beta_4 \text{Parent. sdl}_i^2 + \epsilon_i \\
 \ln \frac{p_i}{1 - p_i} &= \gamma_{G[i]} + \gamma_{L[i]} + \delta_1 \text{Mo. inb}_i + \delta_2 \text{Fa. inb}_i + \delta_3 \text{Parent. sdl}_i + \delta_4 \text{Parent. sdl}_i^2, \\
 \alpha_G &\sim N(0, \sigma_G^2) \\
 \epsilon_i &\sim N(0, \sigma_\epsilon^2) \\
 \gamma_G &\sim N(0, \sigma_{\gamma_G}^2)
 \end{aligned} \tag{4}$$

where *Pois* is the Poisson distribution with mean (and variance) equal to the product of probability for a nonzero count $1 - \pi$ with nonzero counts λ . This way, we were able to simultaneously test the effects of the predictors both on the probability for a breeding pair to be infertile (p) and on the fecundity of a fertile pair (λ).

offset is the natural logarithm of number of days during which eggs were collected (varied from 4 to 5 days), *Parent. sdl* is average parent standard body length, and ϵ is an overdispersion parameter. Other subscripts or variables are as described above. In this model, the effect of parent Sdl is accounted for, such that a significant effect of the selected line would indicate that size-dependent selection affects medaka fertility or fecundity beyond direct effects on Sdl.

2.6.5 | Egg size

Individual egg perimeter Pm_i in mm was modeled as follows:

$$\begin{aligned}
 Pm_i &\sim N(\mu_i, \sigma^2) \\
 \mu_i &= \alpha_{G[i]} + \alpha_{L[i]} + \beta_1 \text{Mo. sdl}_i + \beta_2 \text{Mo. inb}_i + \beta_3 \text{Fa. inb}_i, \\
 \alpha_G &\sim N(0, \sigma_G^2)
 \end{aligned} \tag{5}$$

where the variables are as described above in Equations 1 and 3.

2.6.6 | Incubation time

Incubation time It_i for eggs from each breeding pair i was computed as the time lapse (days) between mean date of spawning and mean date of hatching for larvae collected from mother's 95 to 100 dph. We evaluated the effect of selection on It_i in:

$$\begin{aligned}
 It_i &\sim N(\mu_i, \sigma^2) \\
 \mu_i &= \alpha_{G[i]} + \alpha_{L[i]} + \beta_1 \text{Mo. sdl}_i + \beta_2 \text{Mo. inb}_i + \beta_3 \text{Fa. inb}_i \\
 \alpha_G &\sim N(0, \sigma_G^2)
 \end{aligned} \tag{6}$$

where variables are described above in Equations 1 and 3.

2.6.7 | Larval size at hatch

We modeled individual standard body length at hatch $SdIO$ as:

$$\begin{aligned}
 SdIO_i &\sim N(\mu_i, \sigma^2) \\
 \mu_i &= \alpha_{G[i]} + \alpha_{L[i]} + \beta_1 \text{Parent. sdl}_i + \beta_2 \text{Inb}_i, \\
 \alpha_G &\sim N(0, \sigma_G^2)
 \end{aligned} \tag{7}$$

where variables are described above.

2.6.8 | Hormonal profile

Measurements of LH β , FSH β , and GH represent a multivariate phenotype recorded on the same individuals. This interdependency of measurements should be accounted for when analyzing the effects of selection on traits. Therefore, we modeled the relative pituitary gene expression (see definition above) of individual i using a multivariate normal model of the form:

$$\begin{aligned}
 \ln \left(\frac{[G]_{ij}}{[ACT]_i} \right) &\sim \text{MVN}(\mu_{ij}, \Sigma_{L[i]}) \\
 \mu_{ij} &= \alpha_{j,G[i]} + \alpha_{j,L[i]} + \alpha_{j,S[i]} + \beta_j \text{Inb}_i + \gamma_j \text{Sdl}_i, \\
 \alpha_{j,G} &\sim N(0, \sigma_{j,G}^2)
 \end{aligned} \tag{8}$$

where $[G]_{ij}$ is the RT-qPCR-measured concentration of the interest gene j (LH β , FSH β , and GH) in the pituitary of individual i , $[ACT]_i$ is the RT-qPCR-measured concentration of the reference gene (actin- β) in the pituitary of the same individual i , MVN is the multivariate normal distribution, and $\Sigma_{L[i]}$ is the line-specific variance-covariance matrix of the MVN. We specified an uninformative inverse Wishart prior distribution for $\Sigma_{L[i]}$ such as $\Sigma_{L[i]}^{-1} \sim W(R_{L[i]}, \rho_{L[i]})$ where W is the Wishart distribution, R is a scale matrix (diagonal matrix of dimension j), and $\rho = j$ denotes degrees of freedom (Lunn, Jackson, Best, Thomas, & Spiegelhalter, 2012). In practice, R , which is supplied as data, contains ρ on the diagonal and 0s in nondiagonal entries.

2.6.9 | Natural selection

Our datasets also allowed us to measure natural selection, which often opposes the effects of artificial selection (e.g., Carlson et al., 2007). In medaka in the laboratory, natural selection may act on the standard body length of the selected parents through affecting their reproductive success or through the survival of their progeny. We visualized these potential effects of natural selection using quadratic regressions of fitness components (namely fecundity, hatch rate, number of progeny reaching age 75 dph, and number of progeny kept as breeders for the next generation) on mean parental body length in linear models (Lande & Arnold, 1983). Specifically, for

fecundity, the number of progeny reaching age 75 dph, and number of progeny kept as breeders for the next generation we used zero-inflated Poisson models similar to Model 4 above, except that fixed effects in linear predictors included only mean parental body length and mean parental body length squared, and that no overdispersion parameter was needed for number of progeny. For modeling hatch rate, we used a binomial model similar to Model 3 above, except that fixed effects included only mean parental body length and mean parental body length squared, and that no overdispersion parameter was needed.

2.6.10 | MCMC parameter estimation

All models were fitted using MCMC in JAGS (Plummer, 2003) through the jagsUI R package (Kellner, 2019) in R 3.6.3 (R Core Team, 2020). We used weakly informative priors and, for each model, we ran three independent MCMC chains thinned at a period of 5 iterations until parameter convergence was reached, as assessed using the Gelman–Rubin statistic (Gelman & Rubin, 1992).

We tested the significance of effects from posterior parameter distributions using a test equivalent to a two-way *t* test. In these tests, the MCMC *p*-value was twice the proportion of the posterior for which the sign was opposite to that of the mean posterior value. We further assessed goodness of fit of our models by using a Bayesian *p*-value (Gelman, Meng, & Stern, 1996). Briefly, we computed residuals for the actual data as well as for synthetic data simulated from estimated model parameters (i.e., residuals from fitting the model to “ideal” data). The Bayesian *p*-value is the proportion of simulations in which ideal residuals are larger than true residuals. If the model fits the data well, the Bayesian *p*-value is close to 0.5. Bayesian *p* values for our models ranged from 0.49 to 0.66, indicating excellent model fit. All models were fitted using an “effect” parametrization (Appendix 4), that is, by setting one level of each factor as a reference levels as is done by default in the R software.

3 | RESULTS

Effect sizes for response to selection of the 14 measured traits are presented in Table 1, while quantitative statistical results are provided in Appendix 4.

In line with our first prediction, the Large medaka line evolved toward a larger standard body length at 75 dph in both mature (Figure 1a, Appendix 3) and immature fish (Figure 1b, Appendix 3). This effect was identical in females, males, and immatures at 75 dph (+1.23 mm, MCMC *p*-value = .000, results shown for females only in Model 1 in Appendix 4). However, in contrast with our first prediction, body size in the Small medaka line did *not* respond to selection (Figure 1, Appendix 3). This lack of response was consistent across females, males, and immatures (−0.02 mm, MCMC *p*-value >.800, results shown for females only in Model 1 in Appendix 4). Therefore,

medaka presented a unidirectional response to bidirectional size-dependent selection.

Our second prediction was that evolution of body size should be paralleled by evolution of correlated traits, and in particular of age and size at maturation, size-specific fecundity, egg sizes, size at hatch and larval survival. Only maturity probability at 75 dph responded as expected, and more sharply so in the Large than in the Small line (Table 1). Specifically, maturity probability at an average age and body length decreased significantly in the Large medaka line only (Model 2 in Appendix 4). This change was associated with an upward shift in the probabilistic maturation reaction norm (PMRN) for the Large medaka line compared to the PMRN for the Control line (Figure 2).

In the Small medaka line, maturity probability at an average age and body length did not respond to selection (Model 2 in Appendix 4) and, accordingly, PMRNs for the Small and Control lines largely overlapped (Figure 2). Noticeably, however, there were some signs of an increased reproductive investment in the Small medaka line: The length-corrected maturity probability decreased less fast with an increasing age than in the Control line (Model 2 in Appendix 4), and egg sizes increased (Table 1, Model 5 in Appendix 4, see also results on GH below).

In contrast with our second prediction, we found that body length at hatch was significantly decreased in *both* the Large and Small medaka lines, as compared to the Control line (Table 1, Model 7 in Appendix 4). This result suggests that larvae might have had larger yolk sacs in these two lines, owing to their similar- and larger-than-control eggs sizes, respectively. We did not photograph yolk sacs and cannot test this hypothesis. Noticeably, body length at hatch was also the only of the 14 monitored traits that was significantly influenced by inbreeding, more inbred individuals having a larger size at hatch (Table 1, Model 7 in and S2). Hatch rate marginally decreased in the Large line compared to the Control line, but we found no effect of selection on survival at later development stages (Table 1, Model 3 in Appendix 4).

Our third prediction was that evolution of body size and maturation should be associated with changes in pituitary production of the growth hormone (GH) and of the β subunits of luteinizing hormone (LH) and follicle-stimulating hormone (FSH). Mean pituitary expression levels of GH marginally increased in males (but not females) in the Small (but not Large) medaka line compared to the Control line (Figure 3, Table 1, Model 8 in Appendix 4). There was a trend toward mean pituitary expression levels of LH and FSH to increase in the Small line and to decrease in the Large line (Figure 3). However, these trends were not statistically significant (Table 1, Model 8 in Appendix 4), highlighting a probable lack of statistical power. Interestingly, residual pituitary gene expressions for the three hormones did not trade off, but were instead highly positively correlated (Model 8 in Appendix 4). Finally, the positive residual correlation between LH and GH significantly increased in the Large line compared to the Control line (Appendix 5).

We detected significant natural selection on medaka body length during our experiment. Specifically, a longer mean parental

Trait	Model number	Small line	Large line		
Standard body length at 75 dph (mm) ^a	1	0.13	0.15	1.12	1.14
Maturity probability ^b	2	0.30	0.17	0.05	-1.00
Egg-to-larvae survival (hatch rate) ^b	3	-0.12	-0.10	-0.22	-0.44
Larvae-to-15 dph survival ^b		-0.34	-0.36	0.10	0.30
15-to-60 dph survival ^b		0.07	0.08	0.00	-0.02
60-to-75 dph survival ^b		0.13	0.52	0.20	0.14
Fertility ^b	4	0.49	-0.58	-0.19	0.58
Nonzero fecundity ^c		-0.25	-0.14	0.06	-0.12
Egg size (perimeter mm)	5	0.13	0.08	0.06	0.03
Mean incubation time (days)	6	0.24	0.18	-0.05	0.12
Standard body length at hatch (mm)	7	-0.07	-0.07	-0.11	-0.12
Pituitary LH ^β ^{a,d}	8	0.14	0.20	-0.07	-0.26
Pituitary FSH ^β ^{a,d}		0.24	0.28	-0.16	-0.30
Pituitary GH ^{a,d}		0.43	0.44	0.22	0.20

Note: Effects sizes were computed as $\mu_S - \mu_C$, where μ_S and μ_C are mean trait values in Small/Large and Control lines, respectively. Shaded columns show "raw" effect sizes computed from a simple line contrast. Nonshaded columns show effects sizes corrected for the effect of covariates in models 1–8. We tested for significance of the 28 corrected effect sizes by applying a Bonferroni correction in which the significance cutoff was $\alpha = 0.05/28 = 0.002$. Statistically significant values are highlighted in bold. Marginally significant values ($\alpha < 0.05$) are italicized.

^aEffects averaged across sexes.

^bLogit scale.

^cNatural-log scale.

^dLog hormone-to-actin ratio.

body length was associated with increased fecundity (Figure 4a, effect nonstatistically significant when inbreeding was also included in Model 4 in Appendix 4), but with a decreased egg hatch rate (Figure 4b, Table 1, Model 3 in Appendix 4). Despite normalization on higher densities at 15 dph, longer-bodied medaka parents still had an increased number of progeny reaching 75 dph (Figure 4c) and, despite controlled pairing at 75 dph, stabilizing natural selection on parental body length remained present in terms of number of progeny being selected as breeders for the next generation (Figure 4d). Therefore, natural selection opposed the effects of artificial selection on medaka body size during our experiment.

4 | DISCUSSION

We measured in the laboratory the realized evolvability of body size in response to size-dependent selection in wild-caught medaka fish. We show that medaka responded to selection for a large body size, but not to selection for a small body size. Before discussing this unexpected result, we start with a mini review of previous harvest-simulating experiments and how their results and designs compare to ours.

TABLE 1 Effect sizes of bidirectional selection on body size on phenotypic, life-history, and neuroendocrine traits in medaka

4.1 | Laboratory harvesting experiments

Size-selection experiments are a classic in evolutionary biology, and have been conducted multiple times on model organisms such as mice (e.g., Falconer, 1973; MacArthur, 1949), chicken (Dunnington et al., 2013), or drosophila (e.g., Hillesheim & Stearns, 1991; Partridge et al., 1999). More recently, problems with overexploitation have renewed the interest in size-selective experiments mimicking size-selective harvesting. In a pioneering study, Edley and Law (1988) have applied small versus large harvesting during a 150-day period to six clonal populations of *Daphnia magna*. About 200 individuals were left in each clonal population after each round of harvesting. Populations of clones exposed to small harvesting (Large lines) evolved rapid somatic growth through small size classes and delayed maturation, while populations of clones exposed to large harvesting (Small lines) evolved slow growth through small size classes and earlier maturation. Computation of reproductive values showed that evolution resulted in a redistribution of reproductive investment toward size classes that were not harvested.

Conover and Munch (2002) applied small, large, or random harvesting at 190 days postfertilization (dpf) during five generations in six experimental populations of the Atlantic silverside *Menidia*

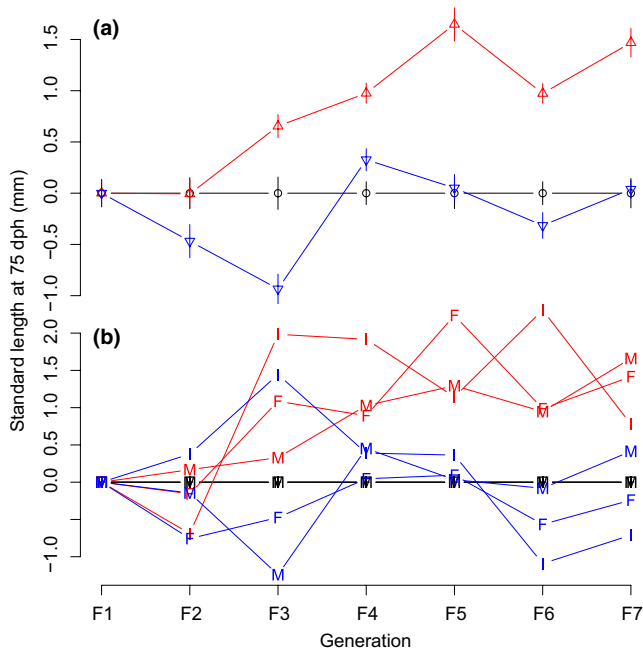


FIGURE 1 Medaka body-size time series response to bidirectional selection on body size. (a) mean standard body length of mature fish (\pm SE) at 75 dph. Black circles: Control (random size-selected) line; blue bottom-pointing triangles: Small line; and red, top-pointing triangles: Large line. (b) same as A but separately for immature (I), male (M), and female (F) fish and without error bars. Data were centered on the mean of the control line (for raw data, see Appendix 3)

menidia maintained in 700 L tanks (about 100 breeders/generation/population). The Atlantic silverside is an annual fish, and it was assumed that all individuals were mature at selection such that selection was imposed on body size only. Conover and Munch (2002) found that the mean weight of fish evolved in the expected direction and, by generation F_5 , an average fish aged 190 dpf weighted 3.5 g in the Control lines, 2.5 g in the Small lines, and 4.5 g in the Large lines. These differences were due to differences in somatic growth rate and underlying traits (Walsh et al., 2006).

Amaral and Johnston (2012) applied small, large, or random harvesting at 90 dpf on six populations of zebra fish *Danio rerio* maintained in 25 L tanks (24–78 breeders/generation/population). After four generations, the selected lines changed in the expected directions with the Small and Large lines evolving mean standard body lengths 2% lower and 10% larger than in the Control line, respectively (actual body length values not presented).

Cameron et al. (2013) exposed soil mites *Sancassania berlesesi* to juvenile or adult harvesting during 70 weeks (i.e., harvesting was stage- but not directly size-dependent). There were 6 populations per harvest treatment, plus six unharvested populations (hundreds of individuals per population). In accordance with theoretical predictions (Heino et al., 2015), juvenile harvesting induced evolution toward earlier maturation, while adult harvesting induced evolution toward delayed maturation. Interestingly, the amplitude of harvest-induced evolution was overwhelmed by

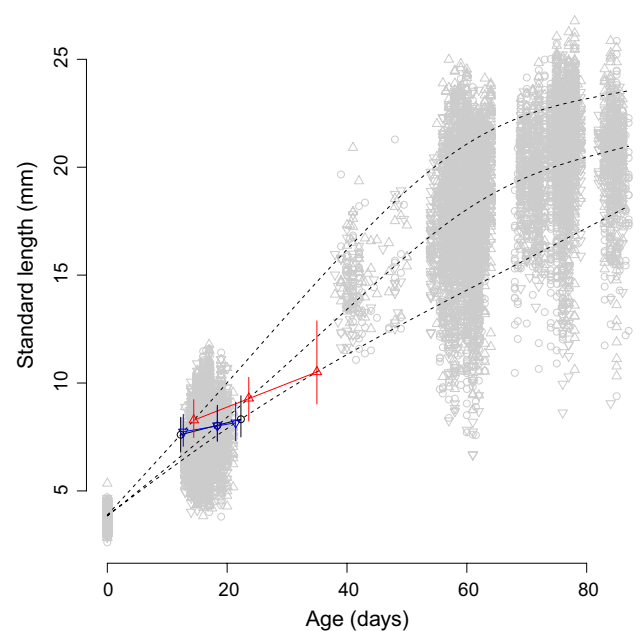


FIGURE 2 Medaka probabilistic maturation reaction norm (PMRN) response to bidirectional selection on body size. Light gray dots are raw data. Black dotted curves represent simulated slow, medium, and fast growth trajectories. Colored solid lines and dots represent 50% PMRNs and their intersection with the simulated growth curves, respectively. Black circles: Control (random size-selected) line; blue bottom-pointing triangles: Small line; and red, top-pointing triangles: Large line. Error bars around the colored dots represent 95% MCMC credible intervals

evolution of delayed maturation in all treatments. This change was interpreted by authors as a response to the captive environment, in which density and competition for resources were increased compared to the natural environment from where mites were initially sampled.

van Wijk et al. (2013) applied small, large, or random harvesting in the guppy *Poecilia reticulata* during a 3-generation experiment in five experimental populations maintained in 120 L aquariums (125 breeders/generation/population). Male guppy stop growing at maturation, and selection was applied on the body length of mature males only. After 3 generations of selection, body lengths of mature male guppy were on average 21 mm in the Large lines versus 18 mm in the Small lines (19 mm in the Control line). However, the age of males was not standardized, such that it is unclear whether selection acted on male age at maturation, on male somatic growth rate or on both traits simultaneously.

Finally, Uusi-Heikkilä et al. (2015) applied small, large, or random harvesting during 5 generations on six experimental populations of zebra fish that were maintained in 320 L tanks (120 breeders/generation/population, mating by groups of 2 or 4 fish). Zebra fish were harvested at an age corresponding to 50% of mature fish in the Control line, and breeders were mated 14 days later. Response to selection was contingent upon both the trait considered and upon the direction of selection. Compared to the Control line, the Large line showed no change in juvenile somatic growth rate or asymptotic

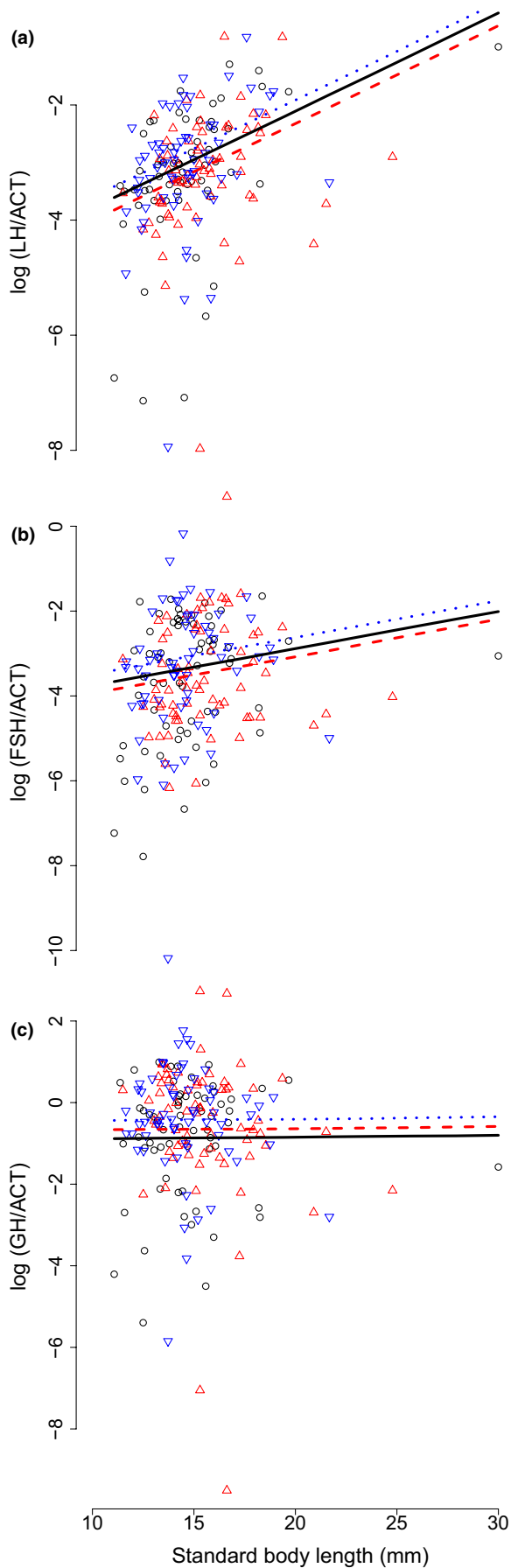


FIGURE 3 Medaka endocrine response to bidirectional selection on body size. Pituitary mRNA levels for A: the luteinizing hormone (LH, β subunit), B: the follicle-stimulating hormone (FSH, β subunit), and C: growth hormone (GH) were standardized by actin β (ACT) levels and log-transformed. Dots represent raw data. Black circles: Control (random size-selected) line; blue, bottom-pointing triangles: Small line; and red, top-pointing triangles: Large line. Lines represent mean MCMC model predictions. Black solid lines: Control medaka line; blue, dotted lines: Small medaka line; and red dashed lines: Large medaka line. For clarity, only model predictions for males are represented

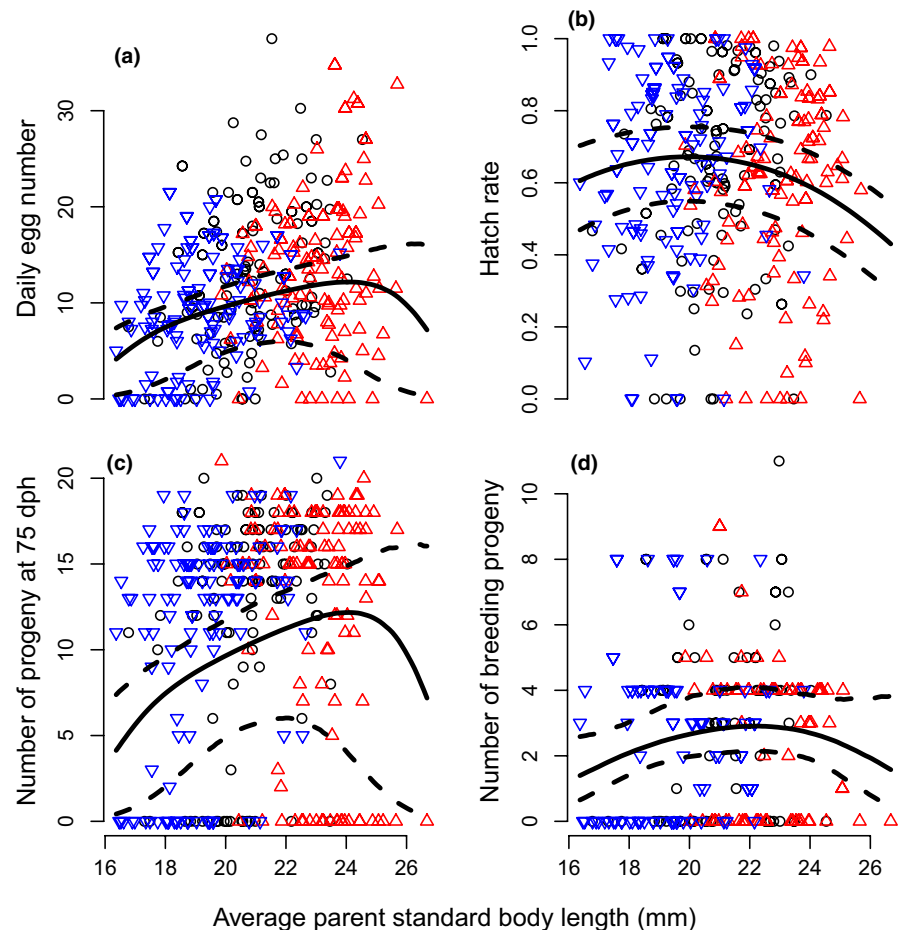
length but matured at a later age (but not size), while the Small line showed no change in juvenile somatic growth rate but evolved lower asymptotic length and maturation at a smaller size (but not age).

All the above-listed designs, and ours as well, imposed truncation selection on body size, which may or may not accurately reproduce the form of fishing-induced selection depending on the fishing gear. Towed gears and long-lining catch all individuals above a threshold body size, and their effects are thus accurately simulated by truncation selection. In contrast, gillnets or traps selectively target medium-long individuals (Carlson et al., 2007; Kendall et al., 2009; Kuparinen et al., 2009; Lagler, 1968; Millar & Fryer, 1999), and thus generate at the same time disruptive selection and directional selection against a large body size (Carlson et al., 2007; Edeline et al., 2009). Truncation selection does not reproduce the disruptive component of gillnet-induced selection, but it still does capture the directional component. Hence, on the whole truncation selection provides a simple and relatively inclusive selection framework to simulate fishing-induced selection on body size.

Another key feature of all previous laboratory harvesting experiments is that they used a mass-selection design with replication of the selected lines, but no control over effective population sizes, inbreeding rate or natural selection. To avoid these problems, we isolated selected pairs and raised their offspring in individual tanks, keeping track of the pedigrees along the experiment. This made it possible to control for the number of offspring per individuals, to maximize effective population sizes, to limit inbreeding throughout the selection procedure, and to measure natural selection. To our knowledge, this is the first time that such a high level of control is achieved in a size-selection experiment on fish.

However, because the number of individuals included in such an experiment is limited, line replication trades off with increasing effective population size N_e . A large N_e decreases genetic drift, limits the effect of linkage disequilibrium on selection limits, and delays the unavoidable increase in inbreeding (Hill & Robertson, 1966; Robertson, 1960); see, for example, Weber and Diggins (1990) for experimental evidence. In particular, avoiding genetic drift and inbreeding is crucial when studying the evolution of correlated characters (Phillips, Whitlock, & Fowler, 2001). Therefore, we chose to derive three large-population lines ($25 < N_e < 30$ in each) rather than replicating small-population treatments. A pedigree-based quantitative genetic analysis suggests that medaka trait dynamics in the Large line were not compatible with

FIGURE 4 Natural selection on medaka body size in the laboratory. Fitness components are regressed against average standard body length of the parental pair. (a) Daily fecundity. (b) Hatch rate of the aggregated clutches. (c) Number of progeny reaching an age of 75 days posthatch. (d) Same as C but after the progeny was selected as breeder to produce the next generation. Solid lines show mean MCMC predicted values and dashed lines 95% credible intervals. Dots represent raw data. Black circles: Control (random size-selected) line; blue, bottom-pointing triangles: Small line; and red, top-pointing triangles: Large line



random drift, and instead reflected deterministic evolutionary processes (Le Rouzic et al., in press).

4.2 | Medaka phenotypic and life-history responses to bidirectional selection on body size

At the end of our experiment (F_7), body sizes of mature medaka at 75 days posthatch were 20.5 versus 22.0 mm (7% difference) in the Control versus Large lines, respectively. This difference is modest, but is in the range of responses to selection observed in other fish harvesting experiments for the Control versus Large lines: 62.3 versus 76.1 mm (22% difference) in the Atlantic silverside (Conover & Munch, 2002, mean lengths estimated from a mass-length relationship based on data from Duffy, Picha, Borski, & Conover, 2013), 10% (raw data not available) in zebra fish *Danio rerio* (Amaral & Johnston, 2012), 19.3 versus 20.8 mm (7.5%) in the guppy *Poecilia reticulata* (van Wijk et al., 2013), and 29.2 versus 29.5 mm for asymptotic length (<1% difference) or 22.6 versus 22.9 mm for length at maturity (1.2% difference) in zebra fish (Uusi-Heikkilä et al., 2015).

In contrast, medaka body size did not respond to selection in the Small line. Such an unidirectional response to bidirectional selection was not found in previous experiments on Atlantic silverside (Conover

& Munch, 2002), zebra fish by Amaral and Johnston (2012) or guppy (van Wijk et al., 2013), but compares with the results obtained on zebra fish by Uusi-Heikkilä et al. (2015), who show that the magnitude of response to size-dependent selection was trait-specific and contingent upon the direction of selection (see above). The qualitative agreement between our results and those of Uusi-Heikkilä et al. (2015) might possibly come from a convergence among our respective selective designs. The selection procedure by Uusi-Heikkilä et al. (2015) involved mating the fish 14 days after that 50% of the population reached maturity, a delay that was possibly not long enough to allow for 100% of the fish to reach maturity, in which case selection was applied *both* on body size and for maturity (similar to our own design). As discussed by Le Rouzic et al. (in press), available evidence suggests that response to such bivariate selection on correlated traits is often erratic.

In our experiment, lack of body-size response to selection in the Small medaka line could not be ascribed to an absence of artificial selection, which was strong and consistent, nor due to the counteracting effects of natural selection, which remained weak compared to the strength of artificial selection, nor due to inbreeding which was by F_7 identical among the random- and large-harvested lines. Instead, the absence of evolution in the Small medaka line suggests that medaka are at a lower evolutionary limit for body size.

4.3 | Medaka neuroendocrine response to bidirectional selection on body size

We specifically targeted genes known to play a central role in the regulation of somatic growth and reproduction. In teleosts, growth hormone (GH) is a pleiotropic pituitary hormone that stimulates not only somatic growth rate (Canosa, Chang, & Peter, 2007; Reinecke et al., 2005) but also maturation, and also mediates osmoregulation and the stress response (Le Gac et al., 1993; Rousseau & Dufour, 2007; Wendelaar Bonga, 1997).

We expected pituitary mRNA GH levels to be altered in parallel with body-size and maturation response to selection in the Large medaka line. However, pituitary mRNA GH levels were similar in the Large and Control lines. Instead, pituitary GH expression increased marginally significantly in the Small medaka line, which body size did not respond to selection. Specifically, the increase in GH was marginally significant in males only (+0.450, Model 8 in Appendix 4) but was of a similar amplitude in females (+0.448, results not shown). This counter-intuitive result may, in fact, be explained by the pleiotropic effects of GH on both somatic growth and maturation. In the Large medaka line, evolution toward faster somatic growth was possibly mediated by increased pituitary production of GH but, at the same time, evolution toward delayed maturation was possibly sustained by decreased pituitary GH production. The net result was that pituitary GH production was not significantly increased in the Large line compared to the Control line.

In contrast, in the Small medaka line the absence of body-size evolution did not counteract evolution toward an increased pituitary production of GH, which was possibly associated with an increased reproductive investment. This hypothesis is supported by both results from the maturity probability model, in which the slope of the age effect on maturity probability was marginally significantly less negative in the Small compared to the Control line (Model 2, Appendix 4), and by increased egg size in the Small medaka line. Anyway, these effects in the Small line were weak, and further studies are needed to test whether reproductive traits do respond to selection for a smaller body size in the medaka.

Together with GH, we measured pituitary mRNA levels of the β subunits of the gonadotropins, the luteinizing hormone (LH β) and follicle-stimulating hormone (FSH β), which are known to stimulate steroidogenesis and gametogenesis and are involved in the onset of puberty in teleosts as in other vertebrates (Zohar et al., 2010). We could not detect any significant effect of selection on pituitary gonadotropins in either the Large or Small medaka lines, suggesting that LH β and FSH β are less critical than GH to the evolution of life-history traits in the medaka. Interestingly, however, pituitary activity of the somatotrophic (GH) and gonadotropic (LH β and FSH β) axes were highly positively correlated, suggesting that they are synergistic in their effects on medaka development. Similar results were previously found in the rainbow trout *Oncorhynchus mykiss* (Gomez et al., 1999). Finally, the positive LH-GH correlation significantly increased in the Large medaka line, indicating

that size-dependent selection may alter patterns of hormonal synergies. Future transcriptomic approaches on central and peripheral tissues will maybe provide a deeper understanding of the molecular regulation of response to size-dependent selection in the medaka.

5 | CONCLUSIONS

Inability of medaka to respond to selection for a smaller body size is a warning signal that calls for increasing research efforts to assess life-history evolvability in wild populations. A crucial line of work in achieving this goal will consist in accurately measuring the multivariate components of selection that act on correlated life-history traits such as body size and maturity (Lande & Arnold, 1983; Le Rouzic et al., in press), both in the wild and in laboratory experiments. The other key element of this effort will rely on developing diagnosis tools to evaluate potential for (and signature of) adaptive response to size-dependent, anthropogenic selection (Therkildsen et al., 2019). In the future, comprehensive approaches melting wide-spectrum candidate genes, transcriptomics, and genome scans of experimentally and wild-selected populations will probably be needed to finely decipher the molecular architectures that regulate the adaptive evolution of life histories and that ultimately support the maintenance of biodiversity and ecosystem productivity.

ACKNOWLEDGMENTS

We are grateful to Prof. Kiyoshi Naruse (NIBB, Okazaki, Japan) for his support in obtaining and maintaining medaka from Kiyosu. We are also thankful to Prof. Finn-Arne Weltzien for providing several primer sequences for our candidate genes. We thank the people who helped us at the laboratory: Beatriz Decenci re, Julien Hirschinger, Alice Lamoureux, Alexandre Mac e, and Yohann Chauvier.

CONFLICT OF INTEREST

None declared.

AUTHOR CONTRIBUTIONS

Cl mentine Renneville: Conceptualization (supporting); data curation (lead); formal analysis (supporting); investigation (lead); methodology (supporting); validation (equal); visualization (equal); writing-original draft (equal); writing-review and editing (supporting). **Alexis Millot:** Investigation (equal); methodology (equal); resources (equal); supervision (supporting). **Simon Agostini:** Investigation (equal); methodology (equal); resources (equal); supervision (supporting). **David Carmignac:** Investigation (equal); methodology (equal). **Gersende Maugars:** Conceptualization (supporting); formal analysis (supporting); investigation (lead); methodology (lead); resources (lead); supervision (supporting); validation (supporting); visualization (supporting); writing-review and editing (supporting). **Sylvie Dufour:** Conceptualization (equal); investigation (supporting); methodology (lead); resources (lead); supervision (lead); validation (lead); visualization (supporting); writing-review

and editing (supporting). **Arnaud Le Rouzic:** Conceptualization (lead); data curation (equal); formal analysis (equal); funding acquisition (supporting); investigation (equal); methodology (lead); software (lead); supervision (lead); validation (lead); visualization (lead); writing—original draft (supporting); writing—review and editing (supporting). **Eric Edeline:** Conceptualization (lead); data curation (equal); formal analysis (lead); funding acquisition (lead); investigation (equal); methodology (equal); project administration (lead); resources (lead); software (supporting); supervision (lead); validation (lead); visualization (lead); writing—original draft (supporting); writing—review and editing (lead).

ETHICAL APPROVAL

The protocols used in this study were designed to minimize discomfort, distress, and pain of animals, and were approved by the Darwin Ethical committee (case file #Ce5/2010/041). The committee also confirmed that our methods were performed in accordance with the relevant guidelines and regulations on animal research.

DATA AVAILABILITY STATEMENT

An archive containing datasets and scripts to reproduce analyses can be downloaded at <https://doi.org/10.5061/dryad.0cfxpnw05>.

ORCID

Arnaud Le Rouzic  <https://orcid.org/0000-0002-2158-3458>

Eric Edeline  <https://orcid.org/0000-0003-4963-4453>

REFERENCES

- Amaral, I. P. G., & Johnston, I. A. (2012). Experimental selection for body size at age modifies early life-history traits and muscle gene expression in adult zebrafish. *Journal of Experimental Biology*, *215*, 3895. <https://doi.org/10.1242/jeb.068908>
- Barot, S., Heino, M., O'Brien, L., & Dieckmann, U. (2004). Estimating reaction norms for age and size at maturation when age at first reproduction is unknown. *Evolutionary Ecology Research*, *6*, 659–678.
- Borrell, B. (2013). Ocean conservation: A big fight over little fish. *Nature*, *493*, 597–598. <https://doi.org/10.1038/493597a>
- Cameron, T. C., O'Sullivan, D., Reynolds, A., Piertney, S. B., & Benton, T. G. (2013). Eco-evolutionary dynamics in response to selection on life-history. *Ecology Letters*, *16*, 754–763. <https://doi.org/10.1111/ele.12107>
- Canosa, L. F., Chang, J. P., & Peter, R. E. (2007). Neuroendocrine control of growth hormone in fish. *General and Comparative Endocrinology*, *151*, 1–26. <https://doi.org/10.1016/j.ygcen.2006.12.010>
- Carlson, S. M., Edeline, E., Asbjørn Vøllestad, L., Haugen, T. O., Winfield, I. J., Fletcher, J. M., ... Stenseth, N. C. (2007). Four decades of opposing natural and human-induced artificial selection acting on Windermere pike (*Esox lucius*). *Ecology Letters*, *10*, 512–521. <https://doi.org/10.1111/j.1461-0248.2007.01046.x>
- Conover, D. O., & Munch, S. B. (2002). Sustaining fisheries yields over evolutionary time scales. *Science*, *297*, 94–96. <https://doi.org/10.1126/science.1074085>
- Crow, J. F., & Kimura, M. (1970). *An introduction to population genetics theory* (1st ed.). New York, NY: Harper & Row.
- Devine, J. A., & Heino, M. (2011). Investigating the drivers of maturation dynamics in Barents Sea haddock (*Melanogrammus aeglefinus*). *Fisheries Research*, *110*, 441–449. <https://doi.org/10.1016/j.fishres.2011.05.016>
- Diaz Pauli, B., & Heino, M. (2014). What can selection experiments teach us about fisheries-induced evolution? *Biological Journal of the Linnean Society*, *111*, 485–503. <https://doi.org/10.1111/bij.12241>
- Diaz Pauli, B., Kolding, J., Jeyakanth, G., & Heino, M. (2017). Effects of ambient oxygen and size-selective mortality on growth and maturation in guppies. *Conservation Physiology*, *5*, cox010. <https://doi.org/10.1093/conphys/cox010>
- Dieckmann, U., & Heino, M. (2007). Probabilistic maturation reaction norms: Their history, strengths, and limitations. *Marine Ecology Progress Series*, *335*, 253–269. <https://doi.org/10.3354/meps335253>
- Duffy, T. A., Picha, M. E., Borski, R. J., & Conover, D. O. (2013). Circulating levels of plasma IGF-I during recovery from size-selective harvesting in *Menidia menidia*. *Comparative Biochemistry and Physiology Part A Molecular Integrative Physiology*, *166*, 222–227. <https://doi.org/10.1016/j.cbpa.2013.06.001>
- Dunlop, E. S., Heino, M., & Dieckmann, U. (2009). Eco-genetic modeling of contemporary life-history evolution. *Ecological Applications*, *19*, 1815–1834. <https://doi.org/10.1890/08-1404.1>
- Dunnington, E. A., Honaker, C. F., McGilliard, M. L., & Siegel, P. B. (2013). Phenotypic responses of chickens to long-term, bidirectional selection for juvenile body weight—Historical perspective. *Poultry Science*, *92*, 1724–1734.
- Edeline, E. (2016). Life history evolution, human impacts on. In R. Kliman (Ed.), *The encyclopedia of evolutionary biology* (pp. 335–342). Oxford, UK: Academic Press.
- Edeline, E., Carlson, S. M., Stige, L. C., Winfield, I. J., Fletcher, J. M., James, J. B., ... Stenseth, N. C. (2007). Trait changes in a harvested population are driven by a dynamic tug-of-war between natural and harvest selection. *Proceedings of the National Academy of Sciences*, *104*, 15799–15804. <https://doi.org/10.1073/pnas.0705908104>
- Edeline, E., Le Rouzic, A., Winfield, I. J., Fletcher, J. M., James, J. B., Stenseth, N. C., & Vøllestad, L. A. (2009). Harvest-induced disruptive selection increases variance in fitness-related traits. *Proceedings of the Royal Society of London. Series B: Biological Sciences*, *276*, 4163–4171. <https://doi.org/10.1098/rspb.2009.1106>
- Edley, M. T., & Law, R. (1988). Evolution of life histories and yields in experimental populations of *Daphnia magna*. *Biological Journal of the Linnean Society*, *34*, 309–326. <https://doi.org/10.1111/j.1095-8312.1988.tb01966.x>
- Eikeset, A. M., Dunlop, E. S., Heino, M., Storvik, G., Stenseth, N. C., & Dieckmann, U. (2016). Roles of density-dependent growth and life history evolution in accounting for fisheries-induced trait changes. *Proceedings of the National Academy of Sciences*, *113*, 15030–15035. <https://doi.org/10.1073/pnas.1525749113>
- Falconer, D. S. (1973). Replicated selection for body weight in mice. *Genetical Research*, *22*, 291–321. <https://doi.org/10.1017/S0016672300013094>
- Falconer, D. S., & Mackay, T. F. C. (1996). *Introduction to quantitative genetics* (4th ed.). Harlow, Essex, UK: Longman.
- Fenberg, P. B., & Roy, K. (2008). Ecological and evolutionary consequences of size-selective harvesting: How much do we know? *Molecular Ecology*, *17*, 209–220. <https://doi.org/10.1111/j.1365-294X.2007.03522.x>
- Gelman, A., Jakulin, A., Pittau, M. G., & Su, Y.-S. (2008). A weakly informative default prior distribution for logistic and other regression models. *The Annals of Applied Statistics*, *2*, 1360–1383. <https://doi.org/10.1214/08-AOAS191>
- Gelman, A., Meng, X. L., & Stern, H. (1996). Posterior predictive assessment of model fitness via realized discrepancies. *Statistica Sinica*, *6*, 733–807.
- Gelman, A., & Rubin, D. B. (1992). Inference from iterative simulation using multiple sequences. *Statistical Science*, *7*, 457–472. <https://doi.org/10.1214/ss/1177011136>
- Gomez, J. M., Weil, C., Ollitrault, M., Le Bail, P. Y., Breton, B., & Le Gac, F. (1999). Growth hormone (GH) and gonadotropin subunit gene

- expression and pituitary and plasma changes during spermatogenesis and oogenesis in rainbow trout (*Oncorhynchus mykiss*). *General and Comparative Endocrinology*, 113, 413–428. <https://doi.org/10.1006/gcen.1998.7222>
- Hairston, N. G., Ellner, S. P., Geber, M. A., Yoshida, T., & Fox, J. A. (2005). Rapid evolution and the convergence of ecological and evolutionary time. *Ecology Letters*, 8, 1114–1127. <https://doi.org/10.1111/j.1461-0248.2005.00812.x>
- Harney, E., Van Dooren, T. J. M., Paterson, S., & Plaistow, S. J. (2013). How to measure maturation: A comparison of probabilistic methods used to test for genotypic variation and plasticity in the decision to mature. *Evolution*, 67, 525–538. <https://doi.org/10.1111/j.1558-5646.2012.01758.x>
- Heino, M., Díaz Pauli, B., & Dieckmann, U. (2015). Fisheries-induced evolution. *Annual Review of Ecology Evolution and Systematics*, 46, 461–480. <https://doi.org/10.1146/annurev-ecolsys-112414-054339>
- Heino, M., & Dieckmann, U. (2008). Detecting fisheries-induced life-history evolution: An overview of the reaction-norm approach. *Bulletin of Marine Science*, 83, 69–93.
- Heino, M., Dieckmann, U., & Godø, O. R. (2002). Measuring probabilistic reaction norms for age and size at maturation. *Evolution*, 56, 669–678. <https://doi.org/10.1111/j.0014-3820.2002.tb01378.x>
- Hill, W. G., & Robertson, A. (1966). The effect of linkage on limits to artificial selection. *Genetical Research*, 8, 269–294. <https://doi.org/10.1017/S0016672300010156>
- Hillesheim, E., & Stearns, S. C. (1991). The responses of *Drosophila melanogaster* to artificial selection on body weight and its phenotypic plasticity in two larval food environments. *Evolution*, 45, 1909–1923.
- Kellner, K. (2019). *jagsUI: a wrapper around "rjags" to streamline "JAGS" analyses*, R package version 1.5.1. <https://CRAN.R-project.org/package=jagsUI>
- Kendall, N. W., Hard, J. J., & Quinn, T. P. (2009). Quantifying six decades of fishery selection for size and age at maturity in sockeye salmon. *Evolutionary Applications*, 2, 523–536. <https://doi.org/10.1111/j.1752-4571.2009.00086.x>
- Kinoshita, M., Murata, K., Naruse, K., & Tanaka, M. (2009). *Medaka. Biology, management and experimental protocols* (1st ed.). Ames, IA: Wiley.
- Koressaar, T., & Remm, M. (2007). Enhancements and modifications of primer design program Primer3. *Bioinformatics*, 23, 1289–1291. <https://doi.org/10.1093/bioinformatics/btm091>
- Kuparinen, A., Kuikka, S., & Merilä, J. (2009). Estimating fisheries-induced selection: Traditional gear selectivity research meets fisheries-induced evolution. *Evolutionary Applications*, 2, 234–243. <https://doi.org/10.1111/j.1752-4571.2009.00070.x>
- Kuparinen, A., & Merilä, J. (2007). Detecting and managing fisheries-induced evolution. *Trends in Ecology & Evolution*, 22, 652–659. <https://doi.org/10.1016/j.tree.2007.08.011>
- Lagler, K. F. (1968). Capture, sampling and examination of fishes. In W. E. Ricker (Ed.), *Methods for assessment of fish production in fresh waters* (p. 313). Oxford, UK: Blackwell Publishing Ltd.
- Lande, R., & Arnold, S. J. (1983). The measurement of selection on correlated characters. *Evolution*, 37, 1210–1226. <https://doi.org/10.1111/j.1558-5646.1983.tb00236.x>
- Law, R. (2000). Fishing, selection, and phenotypic evolution. *ICES Journal of Marine Science*, 57, 659–668.
- Le Gac, F., Blaise, O., Fostier, A., Le Bail, P.-Y., Loir, M., Mourot, B., & Weil, C. (1993). Growth hormone (GH) and reproduction: A review. *Fish Physiology and Biochemistry*, 11, 219–232. <https://doi.org/10.1007/BF00004569>
- Le Rouzic, A., Renneville, C., Millot, A., Agostini, S., Carmignac, D., & Edeline, E. (in press). Unidirectional response to bidirectional selection on body size. II Quantitative genetics. *Ecology and Evolution*.
- Lunn, D., Jackson, C., Best, N., Thomas, A., & Spiegelhalter, D. (2012). *The BUGS book: A practical introduction to Bayesian analysis* (1st ed.). Boca Raton, FL: Chapman & Hall.
- Lynch, M., & Walsh, B. (2018). *Evolution and selection of quantitative traits* (1st ed.). New York, NY: Oxford University Press.
- MacArthur, J. W. (1949). Selection for small and large body size in the house mouse. *Genetics*, 34, 194–209.
- Marty, L., Rochet, M.-J., & Ernande, B. (2014). Temporal trends in age and size at maturation of four North Sea gadid species: Cod, haddock, whiting and Norway pout. *Marine Ecology Progress Series*, 497, 179–197.
- Millar, R. B., & Fryer, R. J. (1999). Estimating the size-selection curves of towed program for analysis of Bayesian graphical models gears, traps, nets and hooks. *Review in Fish Biology and Fisheries*, 9, 89–116.
- Morita, K., & Fukuwaka, M. (2006). Does size matter most? The effect of growth history on probabilistic reaction norm for salmon maturation. *Evolution*, 60, 1516–1521. <https://doi.org/10.1111/j.0014-3820.2006.tb01230.x>
- Ogiwara, K., Fujimori, C., Rajapakse, S., & Takahashi, T. (2013). Characterization of luteinizing hormone and luteinizing hormone receptor and their indispensable role in the ovulatory process of the medaka. *PLoS One*, 8, e54482. <https://doi.org/10.1371/journal.pone.0054482>
- Partridge, L., Langelan, R., Fowler, K., Zwaan, B., & French, V. (1999). Correlated responses to selection on body size in *Drosophila melanogaster*. *Genetical Research*, 74, 43–54.
- Phillips, P. C., Whitlock, M. C., & Fowler, K. (2001). Inbreeding changes the shape of the genetic covariance matrix in *Drosophila melanogaster*. *Genetics*, 158, 1137–1145.
- Plummer, M. (2003). *JAGS: A program for analysis of Bayesian graphical models using Gibbs sampling*. Proceedings of the 3rd international workshop on distributed statistical computing, Vienna, Austria.
- R Core Team. (2020). *R: A language and environment for statistical computing*. Vienna, Austria: R Foundation for Statistical Computing.
- Reinecke, M., Björnsson, B. T., Dickhoff, W. W., McCormick, S. D., Navarro, I., Power, D. M., & Gutiérrez, J. (2005). Growth hormone and insulin-like growth factors in fish: Where we are and where to go. *General and Comparative Endocrinology*, 142, 20–24. <https://doi.org/10.1016/j.ygcen.2005.01.016>
- Robertson, A. (1960). A theory of limits in artificial selection. *Proceedings of the Royal Society of London. Series B: Biological Sciences*, 153, 234–249.
- Roff, D. A. (1992). *The evolution of life histories* (1st ed.). New York, NY: Chapman & Hall.
- Rousseau, K., & Dufour, S. (2007). Comparative aspects of GH and metabolic regulation in lower vertebrates. *Neuroendocrinology*, 86, 165–174. <https://doi.org/10.1159/000101029>
- Silva, A., Faria, S., & Nunes, C. (2013). Long-term changes in maturation of sardine, *Sardina pilchardus*, in Portuguese waters. *Scientia Marina*, 77, 429–438.
- Sinnwell, J. P., Therneau, T. M., & Schaid, D. J. (2014). The kinship2 R package for pedigree data. *Human Heredity*, 78, 91–93. <https://doi.org/10.1159/000363105>
- Spivakov, M., Auer, T. O., Peravali, R., Dunham, I., Dolle, D., Fujiyama, A., ... Wittbrodt, J. (2014). Genomic and phenotypic characterization of a wild medaka population: Towards the establishment of an isogenic population genetic resource in fish. *G3: Genes, Genomes, Genetics*, 4, 433–445. <https://doi.org/10.1534/g3.113.008722>
- Takagi, S., Sasado, T., Tamiya, G., Ozato, K., Wakamatsu, Y., Takeshita, A., & Kimura, M. (1994). An efficient expression vector for transgenic medaka construction. *Molecular Marine Biology and Biotechnology*, 3, 192–199.
- Therkildsen, N. O., Wilder, A. P., Conover, D. O., Munch, S. B., Baumann, H., & Palumbi, S. R. (2019). Contrasting genomic shifts underlie

- parallel phenotypic evolution in response to fishing. *Science*, 365, 487. <https://doi.org/10.1126/science.aaw7271>
- Trippel, E. A. (1995). Age at maturity as a stress indicator in fisheries. *BioScience*, 45, 759–771. <https://doi.org/10.2307/1312628>
- Uusi-Heikkilä, S., Whiteley, A. R., Kuparinen, A., Matsumura, S., Venturelli, P. A., Wolter, C., ... Arlinghaus, R. (2015). The evolutionary legacy of size-selective harvesting extends from genes to populations. *Evolutionary Applications*, 8, 597–620. <https://doi.org/10.1111/eva.12268>
- Van Dooren, T. J. M., Tully, T., & Ferrière, R. (2005). The analysis of reaction norms for age and size at maturity using maturation rate models. *Evolution*, 59, 500–506. <https://doi.org/10.1111/j.0014-3820.2005.tb01010.x>
- van Wijk, S. J., Taylor, M. I., Creer, S., Dreyer, C., Rodrigues, F. M., Ramnarine, I. W., ... Carvalho, G. R. (2013). Experimental harvesting of fish populations drives genetically based shifts in body size and maturation. *Frontiers in Ecology and the Environment*, 11, 181–187. <https://doi.org/10.1890/120229>
- Walsh, M. R., Munch, S. B., Chiba, S., & Conover, D. O. (2006). Maladaptive changes in multiple traits caused by fishing: Impediments to population recovery. *Ecology Letters*, 9, 142–148. <https://doi.org/10.1111/j.1461-0248.2005.00858.x>
- Weber, K. E., & Diggins, L. T. (1990). Increased selection response in larger populations. II. Selection for ethanol vapor resistance in *Drosophila melanogaster* at two population sizes. *Genetics*, 125, 585–597.
- Wendelaar Bonga, S. E. (1997). The stress response in fish. *Physiological Reviews*, 77, 591–625. <https://doi.org/10.1152/physrev.1997.77.3.591>
- Yamamoto, T. (1975). *Medaka (killifish): Biology and strains* (1st ed.). Tokyo, Japan: Keigaku Pub. Co.
- Zohar, Y., Munoz-Cueto, J. A., Elizur, A., & Kah, O. (2010). Neuroendocrinology of reproduction in teleost fish. *General and Comparative Endocrinology*, 165, 438–455. <https://doi.org/10.1016/j.ygcen.2009.04.017>

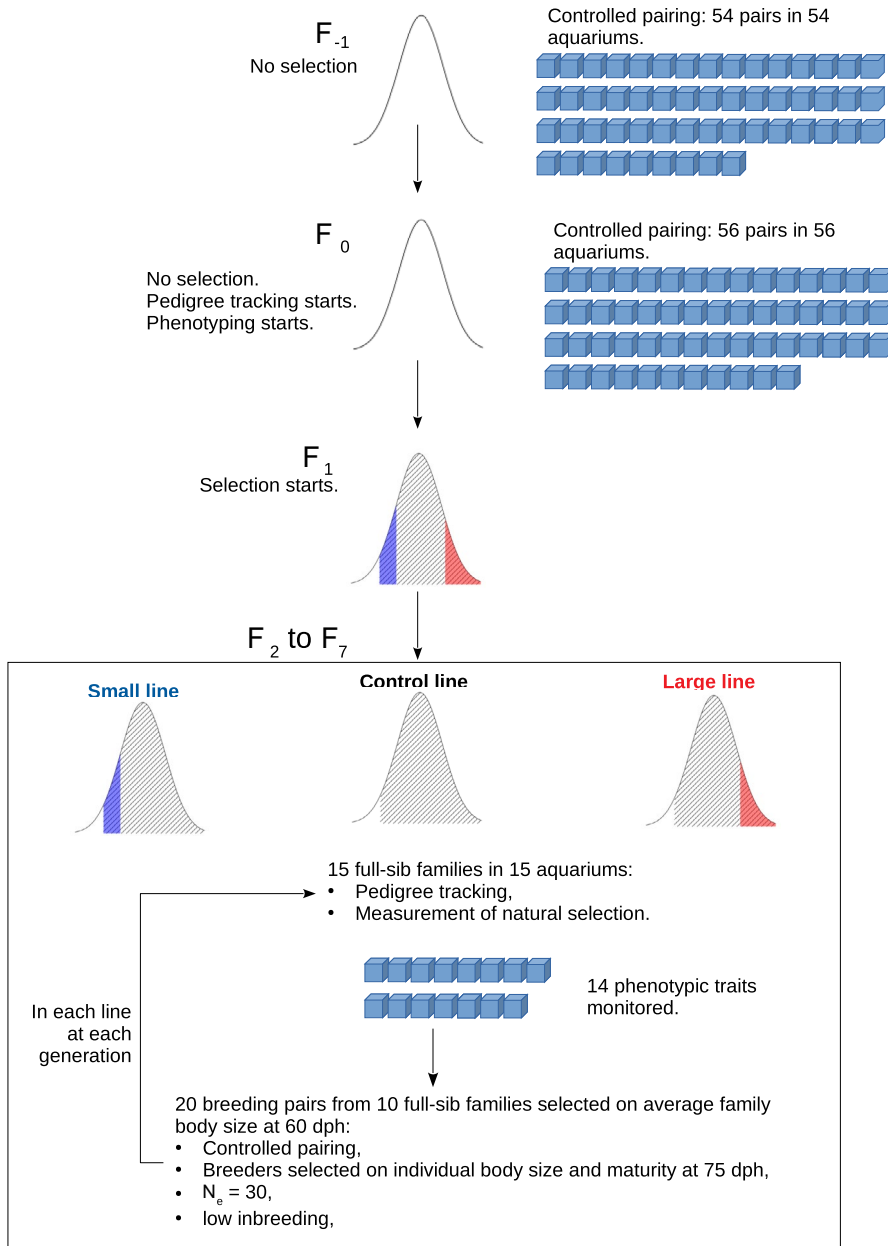
How to cite this article: Renneville C, Millot A, Agostini S, et al. Unidirectional response to bidirectional selection on body size. I. Phenotypic, life-history, and endocrine responses. *Ecol Evol.* 2020;10:10571–10592. <https://doi.org/10.1002/ece3.6713>

APPENDIX 1

Primers for RT-qPCR. Gene-specific primers (fw for forward and rv for reverse) were designed for amplification and quantification of mRNA of various medaka pituitary hormones by qRT-PCR using actin- β as a reference gene. GH: growth hormone, LH β : luteinizing hormone β subunit, and FSH β follicle-stimulating hormone β subunit.

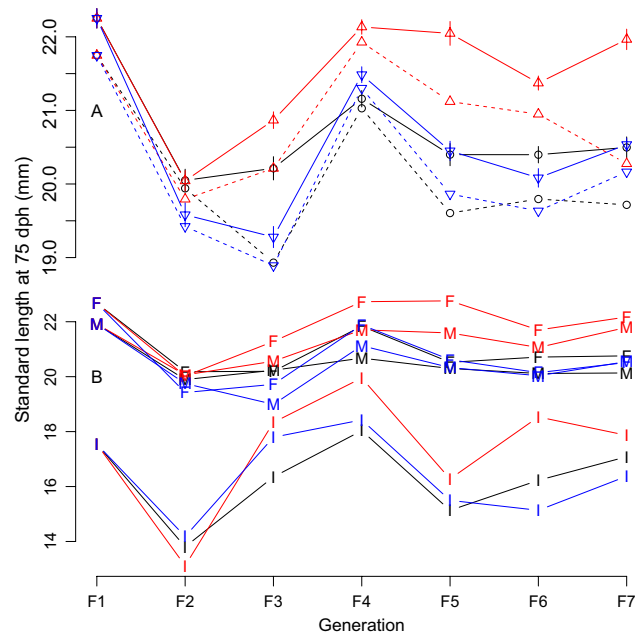
Target gene	Primer name	5'-3' sequence	Amplicon size (pb)	Tm (°C)	Reference	Code
Actin- β	ACT β fw	ACCCTGTCCTGCTCACTGAA	91	59.4	Takagi et al. (1994)	D89627.1
	ACT β rv	GCAGGGCTGTTGAAAGTCTC		59.4		
GH	GH fw	TCGCTCTTTGTCTGGGAGTT	102	57.3	Provided by F.A. Weltzien	LOC101171460
	GH rv	ACATTCTGATTGGCCCTGAT		55.3		
FSH β	FSH β fw2	GTCCACACCACCATATGCGA	97	59.4	Designed for this study	LOC110013854
	FSH β rv2	AGTCCCCACTGCAGATCTTT		57.3		
Lh β	Lh β fw2	TGCCTTACCAAGGACCCCTTGATG	136	64.4	Ogiwara, Fujimori, Rajapakse, and Takahashi (2013)	AB541982
	Lh β rv2	AGGGTATGTGACTGACGGATCCAC		64.4		

APPENDIX 2



Schematic diagram of the experimental design. Curves show medaka standard body length distributions at 75 days posthatch (dph). Shaded areas represent mature individuals and colored areas the mature individuals that were kept as breeders to form the next generation. Blue cubes represent the 3 L aquariums in which medaka were maintained.

APPENDIX 3



Raw medaka body-size time series response to bidirectional anthropogenic selection. A: mean standard body length of all (dashed lines) and mature fish (solid lines with \pm SE) at 75 dph. Black circles: Control line, blue, bottom-pointing triangles: Small line, and red, top-pointing triangles: Large line. B: same as A but separately for immature (I), male (M), and female (F) fish and without error bars.

APPENDIX 4

Summary of MCMC parameter estimates for models 1–8. We used an “effect” model parametrization in which the intercept is the mean value of the response variable (on the link scale) in the reference level of factor predictors. ΔX are estimates for the difference between mean value of the response variable in the factor level X and model intercept. Int: model intercept, F: female, I: immature, M: male, Control: random size-selected line, Large: line selected for a large body length, Small: line selected for a small body length, Inb: individual inbreeding coefficient, Sdl75: standard body length at 75 days posthatch, and SD: standard deviation (shaded lines). *Indicates that numeric predictors were scaled to zero mean and unity standard deviation (or 0.5 standard deviation in case of logistic regression following Gelman, Jakulin, Pittau, & Su, 2008). ZIP in Model 4 refers to the zero-inflated Poisson distribution. Corr.X.Y in Model 8 is the correlation between pituitary expression levels of hormones X and Y .

Model	Response (Trait)	N	Distribution	Link	Effect	Mean estimate	SD of the estimate	MCMC p-value
1	Sdl75	3,503	Normal	Id	Int = Control, SexF	20.754	.508	.000
					Δ Large, SexF	1.232	.083	.000
					Δ Small, SexF	-0.018	.080	.806
					Δ SexI, Control	-3.927	.095	.000
					Δ SexM, Control	-0.579	.070	.000
					Age*	-0.066	.116	.587
					Inb*	-0.028	.066	.685
					<i>SD of generation (random)</i>	0.863	.636	
					<i>SD of residuals</i>	1.879	.023	
2	Maturity probability (ogive)	7,247	Bernoulli	logit	Int = Control	2.151	.298	.001
					Δ Large	-0.998	.108	.000
					Δ Small	0.163	.127	.199
					Sdl*, Control	2.456	.108	.000
					Δ Sdl, Large	-0.071	.149	.640
					Δ Sdl, Small	-0.170	.150	.261
					Age*, Control	-0.607	.075	.000
					Δ Age*, Large	-0.259	.106	.011
					Δ Age*, Small	0.246	.105	.022
					Inb*	-0.089	.079	.256
					<i>SD of generation (random)</i>	0.520	.352	
3	Egg-to-larvae survival (hatch rate)	318	Bin	logit	Int = Control	0.927	.156	.000
					Δ Large	-0.500	.227	.028
					Δ Small	-0.104	.222	.626
					Mo.inb*	0.230	.316	.450
					Fa.inb*	0.072	.318	.796
					<i>SD of overdispersion (random)</i>	1.530	.085	
	Larvae-to-15 dph survival	318	Bin	logit	Int = Control	2.647	.207	.000
					Δ Large	0.272	.281	.333
					Δ Small	-0.329	.266	.226
					Mo.inb*	-0.088	.340	.787
					Fa.inb*	0.131	.335	.681
					<i>SD of overdispersion (random)</i>	1.397	.118	
	15-to-60 dph survival	301	Bin	logit	Int = Control	2.932	.165	.000
					Δ Large	-0.009	.219	.975
					Δ Small	0.061	.223	.777

(Continues)

APPENDIX 4 (Continued)

Model	Response (Trait)	N	Distribution	Link	Effect	Mean estimate	SD of the estimate	MCMC p-value
					Mo.inb*	-0.573	.267	.035
					Fa.inb*	0.081	.270	.765
					<i>SD of overdispersion (random)</i>	0.754	.124	
	60-to-75 dph survival	309	Bin	logit	Int = Control	5.458	.536	.000
					Δ Large	0.174	.583	.749
					Δ Small	0.314	.576	.575
					Mo.inb*	0.069	.724	.917
					Fa.inb*	-0.091	.720	.881
					<i>SD of overdispersion (random)</i>	2.478	.362	
4	Fecundity	318	Bernoulli infertility probability in ZIP	logit	Int = Control	-4.287	2.228	.034
					Δ Large	0.294	.848	.721
					Δ Small	-0.479	.685	.480
					Mo.inb*	-0.673	.790	.390
					Fa.inb*	-0.803	.710	.237
					Parent.sdl*	-0.439	.440	.311
					Parent.sdl* ²	0.670	.223	.003
					<i>SD of generation (random)</i>	3.224	3.370	
			Poisson non-zero fecundity in ZIP	ln	Int = Control	2.469	.103	.000
					Δ Large	-0.020	.129	.836
					Δ Small	-0.138	.103	.191
					Mo.inb*	-0.005	.068	.919
					Fa.inb*	0.035	.067	.597
					Parent.sdl*	0.115	.072	.108
					Parent.sdl* ²	-0.034	.041	.415
					<i>SD of generation (random)</i>	0.150	.128	
					<i>SD of overdispersion (random)</i>	0.608	.030	
5	Egg perimeter	5,828	Normal	Id	Int = Control	4.302	.264	.000
					Δ Large	0.025	.025	.319
					Δ Small	0.077	.022	.000
					Mo.sdl*	-0.007	.013	.567
					Mo.inb*	-0.024	.018	.194
					Fa.inb*	-0.024	.018	.199
					<i>SD of generation (random)</i>	0.533	.310	
					<i>SD of residuals</i>	0.602	.005	
6	Incubation time	267	Normal	Id	Int = Control	7.782	.204	.000
					Δ Large	0.120	.158	.441
					Δ Small	0.181	.139	.204
					Mo.sdl*	-0.142	.081	.085
					Mo.inb*	-0.027	.095	.769
					Fa.inb*	0.005	.094	.974
					<i>SD of generation (random)</i>	0.330	.221	
					<i>SD of residuals</i>	0.847	.038	

(Continues)

APPENDIX 4 (Continued)

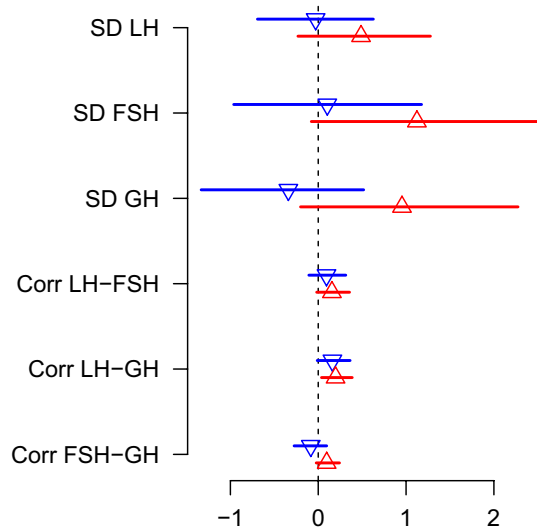
Model	Response (Trait)	N	Distribution	Link	Effect	Mean estimate	SD of the estimate	MCMC p-value
7	SdlO	4,616	Normal	Id	Int = Control	3.900	.060	.000
					Δ Large	-0.118	.011	.000
					Δ Small	-0.066	.010	.000
					Parent.sdl*	0.000	.007	.971
					Inb*	0.037	.008	.000
					<i>SD of generation (random)</i>	0.111	.068	
					<i>SD of residuals</i>	0.240	.002	
8	LH β /actin- β log-ratio	193	MVN	Id	Int = Control, SexM	-2.948	.378	.000
					Δ Large, SexM	-0.217	.216	.298
					Δ LH, SexM	0.202	.188	.294
					Δ SexF, Control	-0.419	.219	.052
					Δ SexI, Control	-0.177	.205	.401
					Inb*	0.174	.151	.245
					Sdl*	0.398	.100	.000
					<i>SD of residuals, Control</i>	1.144	.227	
					<i>SD of residuals, Large</i>	1.633	.295	
					<i>SD of residuals, Small</i>	1.115	.218	
	<i>SD of generation (random)</i>	0.611	.678					
	FSH β /actin- β log-ratio	193	MVN	Id	Int = Control, SexM	-3.324	.424	.000
					Δ Large, SexM	-0.178	.285	.517
					Δ Small, SexM	0.273	.244	.277
					Δ SexF, Control	-1.030	.281	.000
					Δ SexI, Control	-0.116	.263	.669
					Inb*	0.130	.204	.511
					Sdl*	0.209	.130	.108
					<i>SD of residuals, Control</i>	1.824	.365	
					<i>SD of residuals, Large</i>	2.989	.543	
					<i>SD of residuals, Small</i>	1.933	.380	
	<i>SD of generation (random)</i>	0.705	.670					
	GH/actin- β log-ratio	193	MVN	Id	Int = Control, SexM	-0.860	.500	.074
					Δ Large, SexM	0.219	.275	.431
					Δ Small, SexM	0.450	.226	.047
					Δ SexF, Control	-0.292	.267	.277
					Δ SexI, Control	-0.004	.247	1.002
					Inb*	0.149	.185	.419
					Sdl*	0.016	.123	.891
					<i>SD of residuals, Control</i>	1.784	.363	
					<i>SD of residuals, Large</i>	2.766	.494	
					<i>SD of residuals, Small</i>	1.452	.282	
					<i>SD of generation (random)</i>	0.883	.641	
Corr.LH β .FSH β , Control					0.630	0.080	.000	
Corr.LH β .FSH β , Large					0.790	0.047	.000	
Corr.LH β .FSH β , Small	0.728	0.063	.000					
Corr.LH β .GH, Control	0.640	0.079	.000					

(Continues)

APPENDIX 4 (Continued)

Model	Response (Trait)	N	Distribution	Link	Effect	Mean estimate	SD of the estimate	MCMC p-value
	Corr.LH β .GH, Large					0.841	0.037	.000
	Corr.LH β .GH, Small					0.806	0.048	.000
	Corr.FSH β .GH, Control					0.769	0.055	.000
	Corr.FSH β .GH, Large					0.870	0.031	.000
	Corr.FSH β .GH, Small					0.686	0.071	.000

APPENDIX 5



Residual standard deviations and correlations for pituitary hormone expression levels in size-selected medaka lines relative to the control line. Blue, bottom-pointing triangles: Small line and red, top-pointing triangles: Large line. SD: standard deviation, Corr: correlation, LH: pituitary gene expression of the β -subunit of the luteinizing hormone, FSH: pituitary gene expression of the β -subunit of the follicle-stimulating hormone, and GH: pituitary gene expression of the growth hormone.