

RESEARCH

Open Access

The extradomain a of fibronectin enhances the efficacy of lipopolysaccharide defective *Salmonella* bacterins as vaccines in mice

Beatriz San Román¹, Victoria Garrido¹, Pilar-María Muñoz^{1,2}, Laura Arribillaga³, Begoña García¹, Ximena De Andrés¹, Virginia Zabaleta¹, Cristina Mansilla³, Inmaculada Farrán¹, Iñigo Lasa¹, Damián De Andrés¹, Beatriz Amorena¹, Juan-José Lasarte³ and María-Jesús Grilló^{1*}

Abstract

The Extradomain A from fibronectin (EDA) has an immunomodulatory role as fusion protein with viral and tumor antigens, but its effect when administered with bacteria has not been assessed. Here, we investigated the adjuvant effect of EDA in mice immunizations against *Salmonella enterica* subspecies *enterica* serovar Enteritidis (*Salmonella* Enteritidis). Since lipopolysaccharide (LPS) is a major virulence factor and the LPS O-polysaccharide (O-PS) is the immunodominant antigen in serological diagnostic tests, *Salmonella* mutants lacking O-PS (rough mutants) represent an interesting approach for developing new vaccines and diagnostic tests to differentiate infected and vaccinated animals (DIVA tests). Here, antigenic preparations (hot-saline extracts and formalin-inactivated bacterins) from two *Salmonella* Enteritidis rough mutants, carrying either intact (*SEΔ_{waaL}*) or deep-defective (*SEΔ_{gal}*) LPS-Core, were used in combination with EDA. Biotinylated bacterins, in particular *SEΔ_{waaL}* bacterin, decorated with EDAAvidin (EDA and streptavidin fusion protein) improved the protection conferred by hot-saline or bacterins alone and prevented significantly the virulent infection at least to the levels of live attenuated rough mutants. These findings demonstrate the adjuvant effect of EDAAvidin when administered with biotinylated bacterins from *Salmonella* Enteritidis lacking O-PS and the usefulness of BEDA-*SEΔ_{waaL}* as non-live vaccine in the mouse model.

Introduction

Fibronectin is a dimer, with monomers comprising three types (I, II and III) of homologous repeat units [1]. Three of its alternatively spliced exons (IIIA, IIIB and IIIC, also referred to as EDA -Extra domain A-, EDB -Extra domain B- and III-CS) correspond to the type III repeat unit [2]. EDA and EDB are produced in vivo in response to tissue injury or other warning signals. Particularly, EDA is produced during embryonic development and in rheumatoid arthritis, wound healing, epithelial fibrosis, vascular intima proliferation or inflammation in adults [3,4]. EDA induces NF-κB factor activation, proteoglycan release, and 1, 2 and 9 metalloproteinase production, involved in connective tissue destruction following lesion development, as well as in

monocyte and dendritic cell migration through the basal membrane. Such events are triggered in response to the interaction between EDA and its specific Toll Like Receptor 4 (TLR-4), which also binds to lipopolysaccharide (LPS) of Gram negative bacteria [5,6]. Hence, EDA has been proposed to induce maturation of dendritic cells through TLR-4 activation, favouring antigen uptake, expression of co-stimulatory signals, antigen presentation and induction of anti-viral or anti-tumoral T cell responses [6-8]. Recombinant EDA has been expressed in *E. coli* and tobacco chloroplasts, maintaining its proinflammatory properties [8]. Easy scale-up, high safety standards and an enormous capacity to synthesize and accumulate foreign proteins in plant chloroplasts [9] may be advantages of using plants as production platforms for biopharmaceuticals [10].

Several *Salmonella* live attenuated strains, including auxotrophic, metabolic and structural (semi-rough) attenuated mutants [11-15] have been proposed as effective

* Correspondence: mariajesus.grillo@unavarra.es

¹Instituto de Agrobiotecnología (CSIC-UPNA-Gobierno de Navarra), Carretera de Mutilva, s/n, 31192 Pamplona, Spain

Full list of author information is available at the end of the article

vaccines for animals. However, these vaccines are often not safe enough in animals, may release genetically modified microorganisms to the environment and human food-chain, and may interfere in serological diagnostic tests based on the detection of antibodies against the LPS O-Polysaccharide (O-PS) [16] and/or flagellin [17], limiting their practical use in sanitary control campaigns. Therefore, most of the currently recommended vaccines against animal salmonellosis include bacterins from smooth attenuated *Salmonella* spp. [18]. Also, bacterial hot-saline (HS) extracts have been proposed as safe vaccines [19,20]. Since LPS is a major virulence factor and the LPS O-PS is the immunodominant antigen in serological diagnostic tests, *Salmonella* mutants lacking LPS O-PS (rough mutants) represent an interesting approach for developing new live attenuated vaccines [13]. In line with this, some rough mutants such as *Salmonella* Typhimurium $\Delta rfaH$ have been proposed as live vaccine candidates [21,22] but others have been considered either too virulent (such as *Salmonella* Typhimurium $\Delta waaL$) to be safe or too attenuated (*Salmonella* Typhimurium $\Delta galE$ or $\Delta waaG$ mutants) to confer protection against virulent infections, being discarded as vaccine candidates [20].

This work aims to investigate the adjuvant value of EDA, using HS or bacterins obtained from *Salmonella* Enteritidis rough mutants differing in LPS-Core composition ($SE\Delta waaL$ and $SE\Delta gal$) as antigenic preparations, in a sublethal challenge mouse model.

Materials and methods

Bacterial wild-type and mutant strains

Parental wild-type (SE-wt) strain *Salmonella* Enteritidis 3934 [23] was used as parental strain to produce rough mutants, as smooth control strain and as virulent strain for challenge. Mutant strain $SE\Delta waaL$ was obtained by replacing the *waaL* gene with a chloramphenicol resistance cassette using a one-step inactivation technique [24] with some modifications [25]. The chloramphenicol resistance cassette was amplified by PCR from the *MudQ* transposon, using the *waaL-Clo* Fw and *waaL-Clo* Rv primers described in Table 1. Mutant strain $SE\Delta gal$ was constructed by 4378 bp *galETKM* operon deletion using the plasmid pKO3blue [26] and the *gal-A/gal-B* and *gal-C/gal-D* pairs of primers (Table 1).

Characterization of rough mutants

The absence of LPS O-PS and the differences in size (i.e. in core structure) of the LPS-Core in $SE\Delta waaL$ and $SE\Delta gal$ rough mutants were verified by SDS-PAGE silver staining, modified for LPS identification as described previously [27]. Surface topology was analyzed by susceptibility to 17 *Salmonella* Enteritidis Typing Phages (SETPs; named from SETP 1 to 17) and Felix O1 (FO;

which specifically recognizes the outer LPS-Core of most *Salmonella* spp.), according to standard protocols [28,29] of the Salmonella National Reference Laboratory (Instituto de Salud Carlos III, Madrid, Spain). The presence of flagellum antigens was determined by direct anti-H slide agglutination tests [18] and motility was analyzed by the halo generated in swimming and swarming assays [30]. The outer membrane permeability of the mutants was assessed by both the Minimal Bactericidal Concentration to Polymyxin B using a standard microdilution test [31,32] and the bactericidal effect of non-immune human serum [33]. Other phenotypic characteristics were assessed as described elsewhere [23]. Finally, virulence studies were performed in BALB/c mice, by determining lethality and splenic infections in surviving mice. For this, mice ($n=5$) were inoculated intraperitoneally with 2×10^3 , 2×10^5 or 2×10^7 CFU/animal of $SE\Delta waaL$ or $SE\Delta gal$ mutants. A group of mice ($n=5$) inoculated with 2×10^3 CFU/mouse of smooth parental SE-wt strain was used as reference. Deaths were recorded for 2 weeks after infection. Then, the percentage of cumulative survival in mice was calculated by the Kaplan-Meier analysis, and statistically compared by the LogRank test (see below). Moreover, the number of viable bacteria was determined in spleens of surviving mice and expressed as the mean \pm SD of \log_{10} CFU/spleen, as described previously [19].

Production and characterization of antigenic preparations

Recombinant protein EDA was obtained either in *E. coli* BL21(DE3) cells (Amersham Pharmacia Biotech) or tobacco plant chloroplasts (named MEDA) as described previously [6,8]. After filter-sterilization in a 0.2- μ m membrane (Millipore), the absence of bacterial contaminants in both EDA preparations was assessed by plating onto agar.

Bacterial antigens were obtained by HS extraction or formalin-inactivation (bacterins) from $SE\Delta gal$ (HS- $SE\Delta gal$ and B- $SE\Delta gal$), $SE\Delta waaL$ (HS- $SE\Delta waaL$ and B- $SE\Delta waaL$) and SE-wt (HS-SEwt and B-SEwt) strains, as described previously [19,34].

To improve binding of EDA to the bacterial cell surface, a recombinant fusion protein of EDA and streptavidin (named EDAvidin) was obtained and mixed with bacterins previously biotinylated to obtain the antigenic preparations named BEDA. EDAvidin was produced from the expression plasmid pET21a-EDA-Streptavidin constructed with the pET21a-Streptavidin-Alive [35] expressing wild-type subunit of streptavidin with a 6His-tag. The DNA sequence encoding EDA was amplified by PCR, using primers CATATGAACATTGATCGCCC TAAAGGACT (Upper EDA-NdeI) and CATATGTGTG GACTGGATTCCAATCAGGGG (Lower EDA-NdeI) and the plasmid pET20b1-2 as a probe. The resulting PCR

Table 1 Oligonucleotides designed and used in this study

Oligonucleotide	Sequence (5'to 3')
<i>waal-Clo Fw</i>	TCACCAGAACAGAACCTGGCGAAT TTAGATGCCACAAGC GTATTTGGAAAGATTCATTA <u>AGTGTAGGCTGGAGCTGCTT</u> ^a
<i>waal-Clo Rv</i>	AGTTGGGAAAATGTAGCGCAGCG TTTCGAGGAAACAAAT GAAAACTGGTTTGATAAGTG <u>ACATATGAATATCCTCCTTAG</u> ^A
<i>galA</i>	GCGGCCGCATTACGCCCTGCAACG
<i>galB</i>	CTCGAGGCCGCTACATGCCCGA
<i>galC</i>	CTCGAGCTCCGTTAAGCCTATGGT
<i>galD</i>	AGATCTAATCTGGTGACCGACAGA

^aThe primer sequence for the chloramphenicol resistance cassette is underlined.

product was cloned in pCR2.1-TOPO using the TOPO TA Cloning[®] kit (Invitrogen LifeTechnologies). All constructs were verified by DNA sequencing. The resulting plasmid expressing EDA in the C-terminus of streptavidin was employed for transformation and expression of EDA-vidin in *E. coli* BL21(DE3) cells, and the fusion protein was purified by affinity chromatography (HisTrap[™] HP columns, GE Healthcare Life Sciences). The Sulfo-NHS-SS-Biotin system (ThermoScientific) was used for bacterin biotinylation, and the non-reacting Sulfo-NHS-SS-Biotin molecules were removed by dialysis using a Slide-a-Lyzer Dialysis cassette (3,500-MWCO, ThermoScientific). To determine the level of free amines, bacterins B-SE Δ gal, B-SE Δ waal and B-SEwt were labeled with carboxyfluorescein succinimidyl ester (CFSE) 0.125 μ M (Invitrogen), washed twice and analysed by flow cytometry. Unlabeled SE-wt bacterins were used as negative control.

LPS was quantified by detecting 2-keto-3-deoxyoctonate (Kdo) corrected for 2-deoxyaldoses, as described previously [36]. Protein and antigenic profiles of bacterial and recombinant protein preparations were analysed by Coomassie (Bio-Rad) and immunoblotting methods, respectively. Where indicated, samples were also loaded without boiling onto the SDS-polyacrylamide gels in order to visualize the presence of tetramers of the EDA-vidin fusion protein. Immunoblotting was performed using sera from mice experimentally infected with smooth SE-wt or from EDA hyperimmunized rabbits as primary antibodies and horseradish anti-mouse IgG or goat anti-rabbit IgG (ThermoFisher) as secondary antibodies, and the reaction was developed with diaminobenzidine. Proteins were quantified by the Bradford method (Bio-Rad).

Finally, the ability of EDavidin to bind biotinylated and non-biotinylated bacterins was assessed by ELISA in

plates coated with 0.1 μ g/well of biotinylated bacterins or conventional bacterins as control. After incubation with 10% foetal calf serum (Invitrogen LifeTechnologies), 3 μ g/mL of EDA or EDavidin proteins were added, incubated with anti-EDA rabbit polyclonal antibody and anti-rabbit whole IgG horseradish peroxidase conjugated antibody (Sigma). The final reactions were developed with tetra-methyl-benzidine substrate (BD Biosciences), stopped with 2 N H₂SO₄, and read at 450 nm in a Multiskan Ascent apparatus (ThermoElectron).

Efficacy of immunization and antibody responses assessment

Eight to ten-week old female BALB/c mice (Charles River International) were accommodated (Public University of Navarre registration code ES/31-2016-000002-CR-SU-US) and handled in compliance with the current European, national and local (RD 1201/2005) regulations, following the FELASA and ARRIVE guidelines and with the approval of the UPNA Animal Experimentation Committee and Navarre's Government. For immunization, mice were inoculated intraperitoneally (IP) with a volume of 0.1 mL of live bacteria or antigenic preparations in PBS. Bacterial suspensions were adjusted by spectrophotometry in PBS (O.D. at 600 nm = 0.150 contains approximately 2×10^8 CFU/mL) and the exact number of CFU in each suspension was retrospectively assessed, by serial dilutions and plating on agar. Efficacy was determined from at least two independent experiments with statistically equivalent controls.

In a first set of experiments, a total of 30 mice (6 groups; 5 mice/group) were IP immunized with HS or bacterin preparations (20 μ g protein/mouse), alone or in physical mix with EDA or MEDA (40 μ g/mouse). A total of 45 control mice (9 groups; 5 mice/group) were inoculated with: (i) HS-SEwt or B-SEwt (20 μ g protein); (ii) PBS; or (iii) EDA or MEDA (40, 100 or 200 μ g/mouse). Four weeks later, all mice were challenged IP with the optimal sub-lethal dose of around 2.5×10^2 CFU SE-wt and, 4 days later, the mean ($n = 5$) number of log₁₀ CFU/spleen challenging strain was determined [37]. The optimal sub-lethal dose (i.e., the minimal dose able to induce moderate and homogeneous levels of splenic infection in all mice) was estimated in a previous dose-response experiment, where mice ($n = 5$) were IP inoculated with 50, 100, 250, 500 or 1000 CFU/mouse, and log₁₀ CFU/spleen determined 4 days later.

A similar immunization-challenge murine model (but using 4 mice/group) was applied in a second set of experiments, to determine the efficacy of biotinylated bacterins (20 μ g/mouse) bound to EDavidin (75 μ g/mouse) (i.e. BEDA-SE Δ waal and BEDA-SE Δ gal, respectively). Besides the above-mentioned controls, live SE Δ waal or SE Δ gal live mutants (1×10^4 CFU/animal, IP) were included.

Persistence of *SEΔwaaL* at the end of the experimental period was distinguished from that of SE-wt challenging strain by double plating in agar and agar supplemented with chloramphenicol (20 mg/L). Persistence of *SEΔgal* was not determined since this mutant was cleared from spleens within 2 weeks post-inoculation, as verified in the virulence assay (Additional file 1: Table S1).

Just before challenge, mice sera were analysed for *Salmonella* specific immunoglobulin (IgG + IgM and IgG2a/IgG1) quantification by indirect ELISA, using HS extracts (HS-SEwt for IgG + IgM or homologous HS extract for IgG2a/IgG1 isotype determination) as coating antigens and horseradish anti-mouse IgG and IgM (H + L) (ImmunoPure, Pierce) or anti-mouse IgG1 or IgG2a (Nordic Immunological) as conjugates. Positive control sera from mice experimentally infected with SE-wt, and negative control sera from animals inoculated with PBS were included in each ELISA plate. Serum titre was defined as the reciprocal of the highest serum dilution showing a mean O.D. value equal to or higher than that of the negative control sera ($n=4$) obtained from mice inoculated with PBS, plus 3 times the SD. Titers of IgG + IgM were expressed as the mean and SD of individual \log_{10} titre obtained; and the Th1/Th2 balance, as the mean and SD of individual \log_{10} IgG2a/ \log_{10} IgG1 ratio [38].

Statistical analysis

Kolmogorov-Smirnov test was first applied to assess the normal distribution of data. Then, means were statistically compared by a one-way ANOVA test, followed by the Fisher's Protected Least Significant Difference (PLSD) test (when four or less groups were compared) or Bonferroni's test (when more than four groups were compared). Efficacy was determined, from at least two independent experiments with statistically equivalent controls, by statistical comparison of the mean ($n=5$) \log_{10} SE-wt CFU/spleen obtained in immunized vs. control mice. In mice survival assays, the percentage of cumulative survival was calculated by the Kaplan-Meier analysis, and statistically compared by the LogRank (Mantel-Cox) test.

Results

Characterization of *SEΔwaaL* and *SEΔgal* LPS O-PS deficient mutants

LPS SDS-PAGE silver stain showed that both rough mutants had an O-PS free LPS, but *SEΔgal* had a LPS-Core smaller than that of *SEΔwaaL* (Figure 1a), as expected from the mutant design. This difference in LPS-Core size was in agreement with the results obtained in the phage susceptibility assay (Figure 1b), where in contrast to SE-wt, both mutants were resistant to phages that recognize specifically O-PS epitopes (i.e. SETPs 1, 3, 5, 7,

8, and 10–16) belonging to *Podoviridae* and *Siphoviridae* morphotypes [29], but only *SEΔwaaL* retained susceptibility to the *Myoviridae* (i.e. SETPs 2, 4, 9), SETP17 and FO phages that recognize specifically the external LPS-Core epitopes, indicating that this mutant had an intact LPS-Core whereas *SEΔgal* had a more pronounced defect. Anti-H agglutination indicated that both rough mutants had flagellum antigens. Phenotypic differences in motility and biofilm formation were observed between both rough mutants and with respect to the parental strain SE-wt (Figure 1c). Specifically, the *SEΔgal* mutant retained partially the flagellum motility, as indicated by the swimming and swarming halos observed, but showed a cellulose production deficiency in the calcofluor binding assay, and also a diminished biofilm formation either in rich LB or in nutrient deficient ATM media (Figure 1c). In contrast, the *SEΔwaaL* mutant lacked motility, but maintained the capability of its parental strain to retain the cellulose on the cell surface and, consequently, to form biofilm in the ATM stirring assay (Figure 1c). Susceptibility to Polymyxin B (Additional file 2: Figure S1-a) showed that the *SEΔgal* mutant was more susceptible (0.125 $\mu\text{g}/\text{mL}$) to cationic peptides than both *SEΔwaaL* (0.250 $\mu\text{g}/\text{mL}$) and SE-wt (4 $\mu\text{g}/\text{mL}$) strains. Moreover, susceptibility to non-immune serum revealed a drastic reduction in the number of surviving bacteria in both rough mutants compared to strain SE-wt, more marked in *SEΔgal* (Additional file 2: Figure S1-b). In fact, few colonies of *SEΔgal* (83 CFU) or *SEΔwaaL* (325 CFU) per million of bacteria resisted the bactericidal effect of serum complement, whereas around 5×10^4 CFU SE-wt were resistant.

Finally, virulence was measured by the ability of bacteria to induce lethality in the infected mice (Additional file 1: Table S1). As expected, all mice inoculated with 2×10^3 CFU of the strain SE-wt died (at day four) after inoculation. However, none (*SEΔgal*) or only one (*SEΔwaaL*) of the mice inoculated with this dose succumbed at the end of the experiment (2 weeks post-inoculation), indicating that both rough mutants were less ($p=0.0027$ in LogRank test) virulent than the smooth parental strain SE-wt. Virulence differences were also observed between both rough mutants, since all mice infected with *SEΔgal*, at any dose, survived to the end of the experimental period without signs of pain or illness, while those inoculated with *SEΔwaaL* showed increased ($p=0.035$) lethality in cumulative survival analysis when infected at the highest dose, either at day 5 (all the mice inoculated with 2×10^7 CFU/mouse died) or at day 12 (50% of cumulative survival in animals inoculated with 2×10^5 CFU/mouse) (Additional file 1: Table S1). Similarly, highly significant ($p < 0.005$) differences between both rough mutants were observed in the levels of splenic infections found in surviving mice (Additional file 1: Table S1), irrespectively of the infection dose used. Mice inoculated with 2×10^3 or

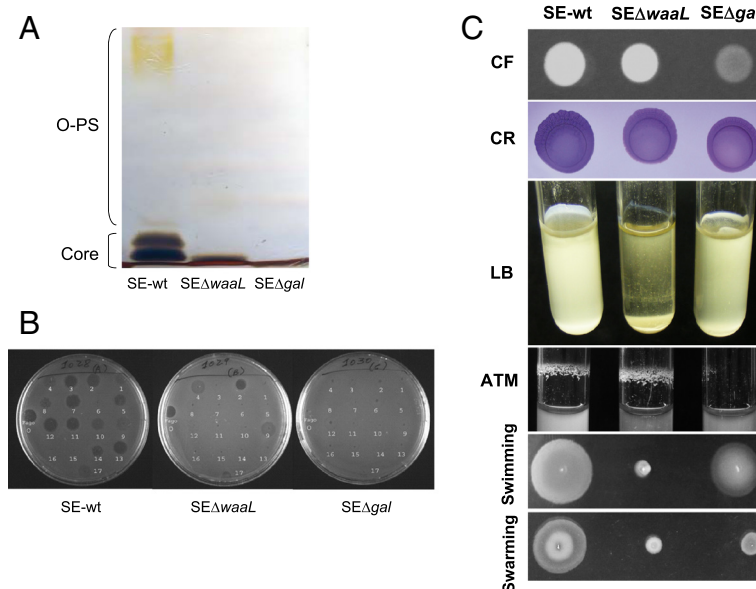


Figure 1 Phenotypic characterization of *Salmonella* Enteritidis $SE\Delta waaL$ and $SE\Delta gal$ mutants compared to SE-wt parental strain. (A) SDS-PAGE with alkaline silver staining of LPS; **(B)** phage susceptibility to the 17 *Salmonella* Enteritidis Typing Phage collection (named from 1 to 17) and FO bacteriophages; and **(C)** CF: Calcofluor; CR: Congo Red; LB, biofilm formation in static LB rich medium; ATM, biofilm formation in stirring ATM nutrient deficient medium; swimming; and swarming assays.

2×10^5 CFU of $SE\Delta gal$ were practically (1.3 and 1.6 mean log CFU/spleen, respectively) cleared from infection at week 2, and those infected at a high dose (2×10^7 CFU) were only moderately infected (3.6 mean log CFU). Finally, all surviving mice infected with 2×10^3 or 2×10^5 CFU of $SE\Delta waaL$ retained more than 4.4 mean log CFU in spleen.

Characterization of antigen preparations and enhancement of EDA binding to antigen

The results on protein quantification revealed that HS from rough strains showed an enriched content (20–22% approximately) in comparison with HS-SEwt (around 12%), whereas bacterins from both wild-type and rough strains had a similar protein content (1.1–1.2 mg/mL). The LPS Kdo content was 0.8%, 1.1% and 1.6% in HS- $SE\Delta waaL$, HS- $SE\Delta gal$ and HS-SEwt, respectively. Coomassie and Western-Blot electrophoretic profiles of proteins indicated that HS extracts from rough and wild-type strains displayed similar profiles, including bands of 17 and 21 KDa fimbrial antigens, different porins, and 35–40 KDa outer membrane proteins (Figure 2a). However, bacterins showed a protein spectrum wider than that of HS extracts, including those of high (above 40 KDa, such as 55 KDa flagellin) and low (below 20 KDa) molecular weights, likely eliminated from HS extracts by boiling, autoclaving and/or dialysis (Figure 2a).

According to SDS-PAGE and Western-Blot with anti-His or anti-EDA antibodies, purified EDA and MEDA

recombinant proteins had the expected molecular weights (13 and 16 KDa, respectively) [8,39]. Regarding EDAvidin, a 24 KDa band was observed in SDS-PAGE gels (Figure 2b). However, native (unboiled) EDAvidin

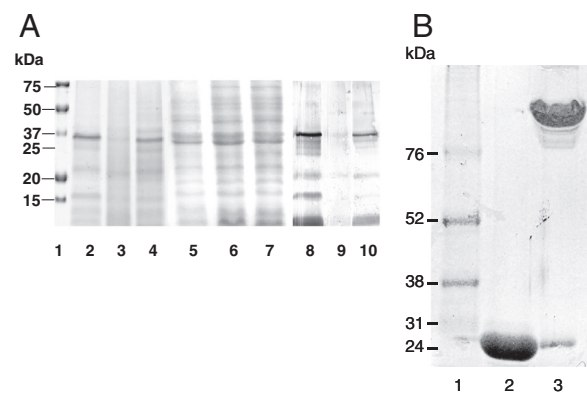


Figure 2 SDS-PAGE electrophoretic profiles of bacterial proteins from HS and bacterins (Panel A) and EDA based recombinant proteins (Panel B). (A) Coomassie blue (lanes 1–7) and Western-Blot of bacterins using anti-*Salmonella* mouse serum (lanes 8–10). Lane 1: molecular weight marker; lanes 2–4: HS extracts from SE-wt, $SE\Delta waaL$ and $SE\Delta gal$, respectively; lanes 5–7: bacterins from SE-wt, $SE\Delta waaL$ and $SE\Delta gal$, respectively; lanes 8–10: bacterins from SE-wt, $SE\Delta waaL$ and $SE\Delta gal$, respectively; and **(B)** Coomassie blue of EDAvidin denatured by boiling (lane 2) or native (lane 3). Lane 1: molecular weight marker.

formed one band likely corresponding to a multimeric form (between 100 and 150 KDa).

In order to enhance the binding of EDA to the bacterial antigens, we determined if the capacity of EDA to bind the bacterial cell surface was increased when using EDAAvidin and biotinylated bacteria (Figure 3). The results of the ELISA (performed with wells coated with biotinylated or non-biotinylated bacterins) indicated that EDAAvidin but not free EDA bound biotinylated bacterins, with increased affinity for biotinylated BEDA-SE Δ gal compared to BEDA-SE Δ waaL (Figure 3).

Since the biotinylation process involves the binding of Sulfo-NHS-LC biotin to free amines on the bacterial wall, the decreased binding of bacterin SE Δ waaL mutant to EDAAvidin with respect to SE Δ gal or SE-wt could be related to a decreased level of biotinylation of this mutant. The flow cytometry results after CFSE labelling (Additional file 3: Figure S2) revealed that bacterin SE Δ waaL had a significantly weaker labeling compared to SE Δ gal or SE-wt, in agreement with the results of Figure 3 and the hypothesis proposed.

EDA/MEDA increases the efficacy of bacterins obtained from LPS O-PS deficient antigens

Mice ($n = 5$) inoculated with increasing doses (40, 100 or 200 μ g/mouse) of EDA or MEDA alone did not show either pain signs after inoculation of these compounds or unspecific protection after challenge with SE-wt strain infection, reaching then infection levels of around 7 log

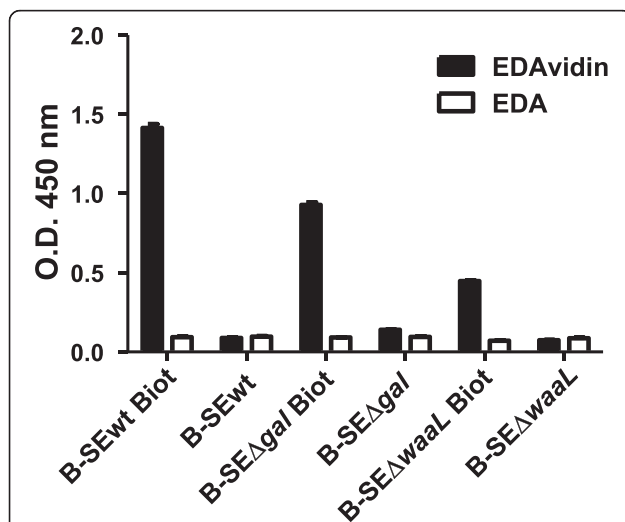


Figure 3 EDAAvidin binding to biotinylated bacterins in ELISA. ELISA plates coated with biotinylated (Biot) or not biotinylated control (B-SE Δ waaL, B-SE Δ gal and B-SEwt) bacterins were incubated with EDAAvidin or EDA alone (control). Binding was monitored using a rabbit anti-EDA polyclonal antibody and an anti-rabbit whole IgG horseradish-peroxidase-conjugated second antibody. The O.D. values at 405 nm (mean \pm SD) are represented.

CFU/spleen, similar to those reached in unvaccinated controls (Figure 4). Moreover, none of the animals submitted to vaccination in this work presented signs of pain or discomfort and all of them survived up to the end of the experimental period, including those immunized with live mutants.

In the dose-response assay with the virulent strain SE-wt, mice inoculated with 50 or 100 CFU showed inconsistent infections and those inoculated with 500 or 1000 CFU showed saturating infections (Additional file 4: Table S2) with signs of septic shock close to death. In consequence, 2.5×10^2 CFU/mouse was chosen as the optimal sub-lethal dose of challenge in the efficacy experiments.

The effect of EDA on protection was studied in mice ($n = 5$) immunized with HS or bacterins from isogenic rough mutants administered in a simple physical mix with EDA (HS and bacterins) or MEDA (only bacterins) and challenged 4 weeks later with a sublethal dose of SE-wt. In the absence of EDA/ MEDA, vaccination with HS-SEwt or B-SEwt (positive controls of protection) prevented virulent infection, whereas mice unvaccinated (PBS control group) reached around 7 log CFU/spleen (Figure 4). Immunization with HS-SE Δ waaL, HS-SE Δ gal or B-SE Δ gal did not prevent the virulent infection, reaching a mean log CFU of SE-wt in spleen statistically equivalent to that of the PBS control group (Figure 4). In contrast, B-SE Δ waaL alone conferred significant protection ($P = 0.001$ vs. PBS control), superior to that conferred by B-SE Δ gal ($P < 0.0001$ between both mutants). The combined administration of EDA in preparations with rough HS extracts did not improve protection significantly compared to administration of these antigens alone. Finally, when using bacterins, EDA and MEDA improved significantly ($P < 0.001$) the protection conferred by B-SE Δ gal (Figure 4b) but not or only moderately that conferred by B-SE Δ waaL (Figure 4a).

Increased binding of EDA to the antigen enhances protection and antibody production

In order to determine whether a strong binding of EDA to the surface of bacterins might improve immunogenicity, biotinylated bacterins mixed with the EDAAvidin (giving rise to the BEDA bacterins) were used for immunization, using live rough mutants as reference. All mice were challenged with the SE-wt strain at week 4 after immunization and the number of SE-wt and SE Δ waaL determined in spleen 4 days later. Mice vaccinated with the rough mutants were found less ($P < 0.05$) protected than those immunized with B-SEwt (positive controls). Mice immunized with SE Δ waaL mutant retained 3.85 ± 0.21 log₁₀ CFU of the mutant in their spleens, revealing the persistence of this mutant throughout the experimental period, with infection levels similar to those observed by this mutant at week 2 (Additional file 1:

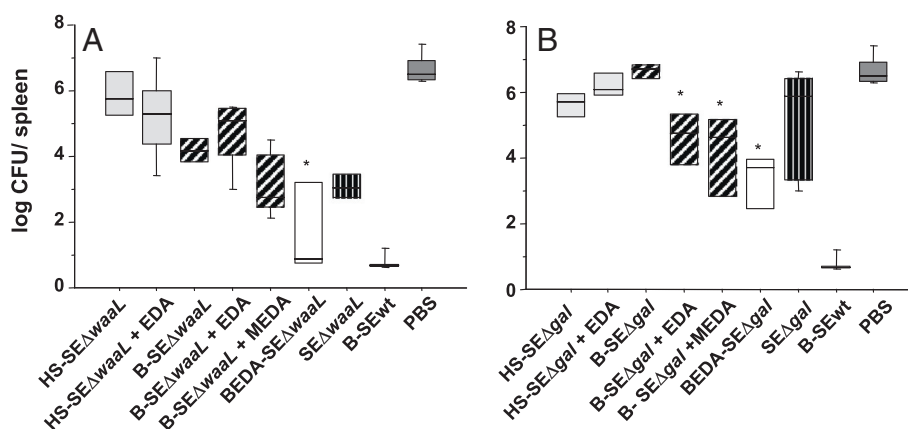


Figure 4 Protection conferred by antigenic preparations from *Salmonella* Enteritidis rough mutants in BALB/c mice. Immunizations. (A) $SE\Delta waal$ immunizations; and (B) $SE\Delta gal$ immunizations. Mice were immunized IP with hot saline (HS) extracts (HS- $SE\Delta waal$ and HS- $SE\Delta gal$; grey boxes), formalin inactivated bacterins (B- $SE\Delta waal$ and B- $SE\Delta gal$; grey line boxes), alone, in combination with EDA (+EDA) or MEDA (+MEDA), or as biotinylated bacterins bound to EDavidin (BEDA- $SE\Delta waal$ and BEDA- $SE\Delta gal$; white boxes). Control groups of mice ($n = 4$) received live rough mutants ($SE\Delta waal$ or $SE\Delta gal$, vertical line boxes), either HS or bacterin obtained from *Salmonella* Enteritidis parental strain (represented as B-SEwt; black boxes) or PBS (black boxes). Four weeks after vaccination, all mice were challenged IP with 2.3×10^2 CFU of *Salmonella* Enteritidis strain 3934 (SE-wt) per animal and the degree of protection expressed as the mean \log_{10} CFU/spleen of SE-wt, at day 4 after challenge. Statistical comparisons were performed by ANOVA and Fisher's PLSD test. * $P < 0.01$ for differences with the corresponding bacterin administered alone, i.e. BEDA- $SE\Delta waal$ vs. B- $SE\Delta waal$; and BEDA- $SE\Delta gal$ or B- $SE\Delta gal$ plus EDA/MEDA vs. B- $SE\Delta gal$.

Table S1). As shown in Figure 4, both BEDA- $SE\Delta waal$ and BEDA- $SE\Delta gal$ preparations improved significantly the levels of protection compared to the bacterin administered either alone ($P < 0.001$) or mixed just with EDA ($P \leq 0.03$). Strikingly, the efficacy of BEDA- $SE\Delta waal$ and BEDA- $SE\Delta gal$ was, respectively, similar to ($P > 0.05$) and higher than ($P \leq 0.01$) that conferred by the isogenic live rough mutants. Finally, live rough mutants were less ($P < 0.05$) effective than B-SEwt, whereas BEDA- $SE\Delta waal$ conferred a protection statistically equivalent to this positive control (B-SEwt), 2 out of 4 mice being free

Table 2 Immunoglobulin titres (IgG plus IgM mean log titers and IgG2a/IgG1 log ratios) in mice, measured at week 4 after immunization with bacterins, either physically mixed just with EDA or bound to EDA (EDavidin) by streptavidin-biotin (BEDA) interaction

Inoculation group	\log_{10} IgM + IgG (mean \pm SD) ^a	\log_{10} IgG2a/IgG1 ratio (mean \pm SD) ^a
SE-wt live	3.45 \pm 0.17	1.18 \pm 0.26
$SE\Delta waal$ live	3.60 \pm 0.73	1.21 \pm 0.10
$SE\Delta gal$ live	2.02 \pm 0.45	1.05 \pm 0.07
B- $SE\Delta waal$ + EDA	2.54 \pm 0.38	1.05 \pm 0.20
B- $SE\Delta gal$ + EDA	2.69 \pm 0.42	0.85 \pm 0.12
BEDA- $SE\Delta waal$	2.77 \pm 0.51	1.45 \pm 0.20
BEDA- $SE\Delta gal$	3.07 \pm 0.51	0.74 \pm 0.09

^a Serum titre was defined as the reciprocal of the highest serum dilution showing a mean O.D. value equal to or higher than that of the negative control sera ($n = 4$) obtained from mice inoculated with PBS, plus 3 times the SD. Mean and SD ($n = 4$) represent the data obtained in triplicate.

from virulent infection. Therefore, the increased binding of EDA to antigens favoured by streptavidin-biotin interactions resulted in enhanced protection.

In an attempt to initiate a search for an immune correlate with protection, IgG + IgM mean titers and IgG2a/IgG1 ratios were determined in sera obtained just before challenge from mice immunized with bacterins, either physically mixed just with EDA or bound to EDA by streptavidin-biotin (BEDA) interaction. Mice immunized with BEDA- $SE\Delta waal$ or B- $SE\Delta waal$ + EDA had lower ($P < 0.01$) levels of IgG + IgM than those immunized with the live $SE\Delta waal$ mutant (Table 2). In contrast, BEDA- $SE\Delta gal$ and B- $SE\Delta gal$ + EDA preparations induced IgG + IgM levels higher ($P < 0.05$) than those induced by the live $SE\Delta gal$ mutant. The humoral responses to BEDA- $SE\Delta waal$ or B- $SE\Delta waal$ + EDA were accompanied by an enhanced Th1 response (IgG2a/IgG1 balance between 1.45 ± 0.20 and 1.05 ± 0.20), but this enhancement was not observed in the case of $SE\Delta gal$ preparations, which induced a response slightly biased towards a Th2 profile (0.74 ± 0.09 and 0.85 ± 0.12 with BEDA- $SE\Delta gal$ and B- $SE\Delta gal$ + EDA, respectively).

Discussion

Many live attenuated or inactivated vaccines against a variety of pathogens such as *Salmonella* require booster immunizations to attain the expected protection. Since vaccine efficacy may increase with the use of adjuvants, research on adjuvant performance is necessary. In this context, the positive effect of EDA, when administered

with non-live *Salmonella* antigenic preparations, was studied in a vaccination-challenge mouse model involving two *Salmonella* Enteritidis rough mutants (SE Δ *waaL* and SE Δ *gal*) differing in the LPS-Core composition. None of these mutants produced LPS O-PS antigen, which may help to distinguish animals vaccinated with these mutants from those infected by field strains. The absence of either (O-PS)-to-LPS assembly enzymes (SE Δ *waaL*) or LPS-Core galactose synthesis enzymes (SE Δ *gal*) led to an intact (in SE Δ *waaL*) or a defective (in SE Δ *gal*) LPS-Core, according to results on SDS-PAGE and susceptibility to SEPTs bacteriophages, as expected from the genetic design of these mutants and previous findings on similar mutants [20,22,40,41]. Functional mutants in the *gal* operon, which includes *galE*, *galT*, *galK* and *galM* genes, all involved in the synthesis of the LPS-Core galactose [42], have been obtained by inactivation of the *galE* gene [41], but these single-gene mutants may revert to a smooth-LPS by incorporating exogenous precursors of galactose into the biosynthetic pathway, both *in vitro* [41] and *in vivo* [21,43,44]. Thus, the mutant production strategy applied in this work, based on the use of a complete deletion of *gal* operon to produce the SE Δ *gal* mutant, ensured the rough phenotype of this mutant through the blockage of galactose synthesis from endogenous or exogenous sources [44].

When attempting the design of non-live vaccines, HS extracts (enriched in outer membrane components) and formalin-inactivated bacteria (bacterins that retain all the external and internal bacterial antigens) were used as antigens [19,37]. Differences in vaccine efficacy between studies using *Salmonella* Enteritidis HS extracts in mice [19,45] could be explained by differences in bacterial genetic makeup, extract preparation and enrichment methods or immunization vehicles. The HS preparations obtained from the *Salmonella* Enteritidis rough mutants reported here did not protect mice against a virulent challenge, whereas mice immunized with HS-SEwt were protected (100% mouse survival and 80% uninfected spleens), demonstrating the essential role of the LPS O-PS in HS-driven protection. The physicochemical characterization of antigenic preparations confirmed that bacterins had a broader protein spectrum compared to HS extracts. This difference could be related to differences in preparation methods (boiling, ultracentrifugation and dialysis for HS extracts and not bacterins). Bacterins lacking LPS O-PS may be useful vaccines against heterologous *Salmonella* species and serovars, since the rough phenotype has an enhanced immunogenicity of minor antigens, mainly porins and lipoproteins conserved in *Salmonella* serotypes [20]. Interestingly, B-SE Δ *waaL* induced partial protection in mice whereas B-SE Δ *gal* did not confer protection, indicating that a complete LPS-Core could play an essential role.

Once verified that the protection obtained with HS or bacterins from both rough mutants was below that of the B-SEwt, the potential of EDA as immunopotentiator in non-live bacterial vaccines was assessed. Adjuvants such as Freund's complete or aluminium hydroxide do not appear to improve the immune response against *Salmonella* [46,47], in contrast with polymeric carriers used to adsorb or encapsulate bacterial extracts [19,48]. Alternatively, adjuvants interacting directly with TLRs have successfully immunopotentiated *Salmonella* Enteritidis sub-cellular fractions. Examples are polyinosinic:polycytidylic acid [poly(I:C)] with TLR-3 [49], CpG sequences with TLR-9 [45] and bacterial LPS with TLR-4 [46,50]. Since EDA activates TLR4 favouring viral antigen presentation [6-8,39], mice were immunized in the presence of recombinant EDA (produced in *E. coli*) or MEDA (in transformed plant chloroplast), initially as a simple physical mix with HS extracts (EDA) or bacterins (EDA and MEDA) from *Salmonella* rough mutants.

The effect of EDA in the efficacy of immunizations depended on the type of antigenic preparation (found in bacterins and not HS extracts) and the mutant from which the bacterins were prepared (B-SE Δ *waaL* or B-SE Δ *gal*). No significant adjuvant effects were observed with EDA or MEDA treatments when B-SE Δ *waaL* was administered alone (which already conferred partial protection), but both EDA or MEDA significantly enhanced protection when using B-SE Δ *gal*. This suggests that the size and/or composition of LPS-Core may have affected the affinity for TLR-4 and/or may have regulated the intracellular fate of the antigen in dendritic cells, as demonstrated for LPS O-PS antigen [51]. Possibly, the complete (but not the incomplete) LPS-Core antigen competes with EDA for TLR-4 recognition, so that EDA is not free to interact with this receptor. Alternatively, EDA and MEDA may have a higher affinity for their surface receptors when exposed in absence of the external LPS-Core (i.e. B-SE Δ *gal*).

In search of strategies that would help to enhance the binding of EDA to the antigen, the novel recombinant EDA fused to streptavidin molecule (EDAAvidin) allowed a significant binding to biotinylated bacterins. Most likely, biotinylated bacterins decorated with EDAAvidin enhanced the targeting of LPS defective bacterins to TLR4 expressing cells, modulating the entry of the antigen and/or its intracellular fate and/or the persistence in dendritic cells [51] to favour the enhancement of the efficacy of these antigenic preparations. This is in line with the significantly improved protection conferred by BEDA-SE Δ *waaL* and BEDA-SE Δ *gal* complexes compared to bacterins alone, reaching levels similar to those obtained with the live rough mutants and, in the case of BEDA-SE Δ *waaL*, the levels conferred by the bacterin B-SEwt positive control. Irrespective of the decreased binding of SE Δ *waaL* to EDAAvidin (apparently related to a lower level of biotinylation according to flow

cytometry results using CFSE), the protection conferred by each individual bacterin including SE Δ waaL increased significantly in the presence vs. absence of EDavidin. Altogether, these findings demonstrate that EDA in the form of EDavidin-biotin complexes improves the efficacy of non-live vaccines. Like in previous work [13], increased IgG + IgM levels or a Th1 biased response (according to the IgG2a/IgG1 balance) could not be correlated with the protection conferred by both BEDA preparations (BEDA-SE Δ waaL and BEDA-SE Δ gal), even though the immune response must have been in both cases sufficiently enhanced to confer significant protection.

Most studies in mice designed to assess *Salmonella* vaccine efficacy use a lethal challenge model. Here, we have used a sub-lethal dose challenge model [19] to preserve animal welfare, yielding information in line with that obtained with the lethal challenge model, since e.g. here live SE Δ waaL performed better than SE Δ gal, like in previous lethal challenge reports with similar mutants [20]. At the same time, this model allowed the detection of increased protection in mice when EDA or MEDA were administered mixed with B-SE Δ gal, and also allowed both the selection of bacterins and not HS from both mutants as *Salmonella* antigen candidates and the detection of enhanced protection with EDavidin bound to biotinylated B-SE Δ waaL.

Although additional work should be done in different natural hosts to determine the true innocuousness and efficacy of BEDA preparations, it is clear that EDA (as EDavidin) improves the efficacy of rough *Salmonella* bacterins (as biotinylated bacterins) in the mouse model. The association between EDavidin and B-SE Δ waaL bacterin may be considered safe and effective for use as a non-live vaccine, conferring a high protection against virulent infection. Employing this BEDA immunization strategy with O-PS deficient mutants may also help to distinguish (by conventional anti-O-PS or new anti-EDA serological tests) between vaccinated animals and asymptotically infected carriers, reservoirs of zoonotic infections. Moreover, the use of non-live vaccines avoids the presence of genetically modified microorganisms in farm animals and their subsequent release to environment or food-chain, having an added value for consumers and veterinary use.

Additional files

Additional file 1: Table S1. Virulence of SE Δ gal and SE Δ waaL in BALB/c mice.

Additional file 2: Figure S1. Susceptibility of *Salmonella* Enteritidis parental and mutant strains to cationic peptides and non-immune human serum. (A) Minimal Bactericidal Concentration (MBC) to Polymyxin B; and (B) Susceptibility to conventional human serum, with respect to heat-inactivated serum. Results are expressed as the mean and SD ($n = 6$) of Polymyxin B concentration ($\mu\text{g/mL}$) at which bacteria were not recovered (A); and \log_{10} CFU of viable bacteria in fresh serum per million of viable bacteria surviving in heat-inactivated serum

(B). Statistical differences ($P < 0.01$) were found by Fisher's PLSD test between SE-wt and each rough mutant.

Additional file 3: Figure S2. Flow cytometry of bacterins B-SE Δ gal, B-SE Δ waaL and B-SEwt labeled with carboxyfluorescein succinimidyl ester (CFSE). Unlabeled SE-wt bacterins (B-SEwt) were used as negative control.

Additional file 4: Table S2. Dose-response assay with *Salmonella* Enteritidis 3934 (SE-wt) strain in mice.

Competing interests

The use of EDavidin is patent pending.

Acknowledgments

This work was funded by Gobierno de Navarra and European Union (project EuroInnova-Navarra reference IIM10865.R11-EP12). B.S.R., P.M.M. and X.D.A. post-doctoral contracts were granted by Gobierno de Navarra/JAE-doc CSIC, MICINN (Subprograma Juan de la Cierva) and Universidad Pública de Navarra, respectively. We are grateful to A. Echeíta (Instituto de Salud Carlos III, Spain) and I. Moriýón (Universidad de Navarra, Spain), for their helpful assistance and indications on some aspects of bacterial and antigens characterization.

Author details

¹Instituto de Agrobiotecnología (CSIC-UPNA-Gobierno de Navarra), Carretera de Mutilva, s/n, 31192 Pamplona, Spain. ²Centro de Investigación y Tecnología Agroalimentaria (CITA) de Aragón (Gobierno de Aragón), Carretera de Montañana, 930, 50059 Zaragoza, Spain. ³Área de Terapia Génica y Hepatología, Centro de Investigación Médica Aplicada (CIMA), Pío XII, 55, 31008 Pamplona, Spain.

Authors' contributions

LA, VZ, CM and IF carried out the obtaining and characterization of EDA, MEDA, EDavidin and biotinylated bacterins. BG carried out the construction and genetic characterization of the *Salmonella* mutants. BSR, VG, PMM and XDA carried out the microbiological characterization of the mutants, the obtaining and characterization of the *Salmonella* antigens, the immune response and protection assays in mice, and the statistical analysis. IL and DDA participated in the draft of the manuscript. BA, JLL and MJG conceived the study, participated in its design, coordination, and interpretation of the results, and wrote the manuscript. All authors read and approved the final manuscript.

Received: 7 February 2012 Accepted: 29 March 2012

Published: 19 April 2012

References

- Petersen TE, Thogersen HC, Skorstengaard K, Vibe-Pedersen K, Sahl P, Sottrup-Jensen L, Magnusson S: **Partial primary structure of bovine plasma fibronectin: three types of internal homology.** *Proc Natl Acad Sci U S A* 1983, **80**:137-141.
- Bennett VD, Pallante KM, Adams SL: **The splicing pattern of fibronectin mRNA changes during chondrogenesis resulting in an unusual form of the mRNA in cartilage.** *J Biol Chem* 1991, **266**:5918-5924.
- Barilla ML, Carsons SE: **Fibronectin fragments and their role in inflammatory arthritis.** *Semin Arthritis Rheum* 2000, **29**:252-265.
- George J, Wang SS, Sevcik AM, Sanicola M, Cate RL, Koteliensky VE, Bissell DM: **Transforming growth factor-beta initiates wound repair in rat liver through induction of the E11A-fibronectin splice isoform.** *Am J Pathol* 2000, **156**:115-124.
- Okamura Y, Watari M, Jerud ES, Young DW, Ishizaka ST, Rose J, Chow JC, Strauss JF 3rd: **The extra domain A of fibronectin activates Toll-like receptor 4.** *J Biol Chem* 2001, **276**:10229-10233.
- Lasarte JJ, Casares N, Gorraiz M, Hervas-Stubbis S, Arribillaga L, Mansilla C, Durantez M, Llopiz D, Sarobe P, Borrás-Cuesta F, Prieto J, Leclerc C: **The extra domain A from fibronectin targets antigens to TLR4-expressing cells and induces cytotoxic T cell responses in vivo.** *J Immunol* 2007, **178**:748-756.
- Mansilla C, Gorraiz M, Martínez M, Casares N, Arribillaga L, Rudilla F, Echeverría I, Riezu-Boj JI, Sarobe P, Borrás-Cuesta F, Prieto J, Lasarte JJ: **Immunization against hepatitis C virus with a fusion protein containing**

- the extra domain A from fibronectin and the hepatitis C virus NS3 protein. *J Hepatol* 2009, **51**:520–527.
8. Farrán I, McCarthy-Suarez I, Rio-Manterola F, Mansilla C, Lasarte JJ, Mingo-Castel AM: **The vaccine adjuvant extra domain A from fibronectin retains its proinflammatory properties when expressed in tobacco chloroplasts.** *Planta* 2010, **231**:977–990.
 9. Oey M, Lohse M, Kreikemeyer B, Bock R: **Exhaustion of the chloroplast protein synthesis capacity by massive expression of a highly stable protein antibiotic.** *Plant J* 2009, **57**:436–445.
 10. Daniell H, Singh ND, Mason H, Streatfield SJ: **Plant-made vaccine antigens and biopharmaceuticals.** *Trends Plant Sci* 2009, **14**:669–679.
 11. Kwon HJ, Cho SH: **Pathogenicity of SG 9R, a rough vaccine strain against fowl typhoid.** *Vaccine* 2011, **29**:1311–1318.
 12. Kong Q, Yang J, Liu Q, Alamuri P, Roland KL, Curtiss R 3rd: **Effect of deletion of genes involved in lipopolysaccharide core and O-antigen synthesis on virulence and immunogenicity of *Salmonella enterica* serovar Typhimurium.** *Infect Immun* 2011, **79**:4227–4239.
 13. Mastroeni P, Chabalgoity JA, Dunstan SJ, Maskell DJ, Dougan G: ***Salmonella*: immune responses and vaccines.** *Vet J* 2001, **161**:132–164.
 14. Karasova D, Sebkova A, Vrbas V, Havlickova H, Sisak F, Rychlik I: **Comparative analysis of *Salmonella enterica* serovar Enteritidis mutants with a vaccine potential.** *Vaccine* 2009, **27**:5265–5270.
 15. Leyman B, Boyen F, Van Parys A, Verbrugge E, Haesebrouck F, Pasmans F: ***Salmonella* Typhimurium LPS mutations for use in vaccines allowing differentiation of infected and vaccinated pigs.** *Vaccine* 2011, **29**:3679–3685.
 16. Barrow PA: **Use of ELISAs for monitoring *Salmonella* in poultry.** *Vet Rec* 1994, **134**:99.
 17. Proux K, Jouy E, Houdayer C, Protais J, Dibb-Fuller M, Boscher E, Gillard A, Gracieux P, Gilbert F, Beaumont C, Duchet-Suchaux M: **Reliable ELISAs showing differences between resistant and susceptible lines in hens orally inoculated with *Salmonella* Enteritidis.** *Vet Res* 2002, **33**:23–33.
 18. OIE: **Office International des Epizooties: Manual of Diagnostic Tests & Vaccines for Terrestrial Animals**, Chapter 2.9.9. 6th edition.; 2008:1267–1283.
 19. Estevan M, Irache JM, Grilló MJ, Blasco JM, Gamazo C: **Encapsulation of antigenic extracts of *Salmonella enterica* serovar Abortusovis into polymeric systems and efficacy as vaccines in mice.** *Vet Microbiol* 2006, **118**:124–132.
 20. Nagy G, Palkovics T, Otto A, Kusch H, Kocsis B, Dobrindt U, Engelmann S, Hecker M, Emody L, Pal T, Hacker J: **“Gently rough”: the vaccine potential of a *Salmonella enterica* regulatory lipopolysaccharide mutant.** *J Infect Dis* 2008, **198**:1699–1706.
 21. Germanier R: **Immunity in Experimental Salmonellosis I. Protection induced by rough mutants of *Salmonella* Typhimurium.** *Infect Immun* 1970, **2**:309–315.
 22. Nagy G, Danino V, Dobrindt U, Pallen M, Chaudhuri R, Emody L, Hinton JC, Hacker J: **Down-regulation of key virulence factors makes the *Salmonella enterica* serovar Typhimurium *rfaH* mutant a promising live-attenuated vaccine candidate.** *Infect Immun* 2006, **74**:5914–5925.
 23. Solano C, García B, Valle J, Berasain C, Ghigo JM, Gamazo C, Lasa I: **Genetic analysis of *Salmonella* Enteritidis biofilm formation: critical role of cellulose.** *Mol Microbiol* 2002, **43**:793–808.
 24. Datsenko KA, Wanner BL: **One-step inactivation of chromosomal genes in *Escherichia coli* K-12 using PCR products.** *Proc Natl Acad Sci U S A* 2000, **97**:6640–6645.
 25. García B, Latasa C, Solano C, García-del Portillo F, Gamazo C, Lasa I: **Role of the GGDEF protein family in *Salmonella* cellulose biosynthesis and biofilm formation.** *Mol Microbiol* 2004, **54**:264–277.
 26. Solano C, García B, Latasa C, Toledo-Arana A, Zorraquino V, Valle J, Casals J, Pedroso E, Lasa I: **Genetic reductionist approach for dissecting individual roles of GGDEF proteins within the c-di-GMP signaling network in *Salmonella*.** *Proc Natl Acad Sci U S A* 2009, **106**:7997–8002.
 27. Tsai CM, Frasch CE: **A sensitive silver stain for detecting lipopolysaccharides in polyacrylamide gels.** *Anal Biochem* 1982, **119**:115–119.
 28. Ward LR, de Sa JD, Rowe B: **A phage-typing scheme for *Salmonella* Enteritidis.** *Epidemiol Infect* 1987, **99**:291–294.
 29. De Lappe N, Doran G, O'Connor J, O'Hare C, Cormican M: **Characterization of bacteriophages used in the *Salmonella enterica* serovar Enteritidis phage-typing scheme.** *J Med Microbiol* 2009, **58**:86–93.
 30. Holzer SU, Schlumberger MC, Jackel D, Hensel M: **Effect of the O-antigen length of lipopolysaccharide on the functions of Type III secretion systems in *Salmonella enterica*.** *Infect Immun* 2009, **77**:5458–5470.
 31. Sanchez-Gomez S, Lamata M, Leiva J, Blondelle SE, Jerala R, Andra J, Brandenburg K, Lohner K, Moriyon I, Martinez-de-Tejada G: **Comparative analysis of selected methods for the assessment of antimicrobial and membrane-permeabilizing activity: a case study for lactoferricin derived peptides.** *BMC Microbiol* 2008, **8**:196.
 32. Murray PR, Baron EJ, Jorgensen JH, Pfaller MA, Tenover FC, Tenover RH: **Manual of Clinical Microbiology**. 8th edition. Washington, D.C.: ASM Press; 2003.
 33. Caro-Hernández P, Fernández-Lago L, De Miguel MJ, Martín-Martín AI, Cloeckaert A, Grilló MJ, Vizcaíno N: **Role of the Omp25/Omp31 family in outer membrane properties and virulence of *Brucella ovis*.** *Infect Immun* 2007, **75**:4050–4061.
 34. Blasco JM, Gamazo C, Winter AJ, de Bagüés MP, Jiménez, Marín C, Barberán M, Moriyón I, Alonso-Urmeneta B, Díaz R: **Evaluation of whole cell and subcellular vaccines against *Brucella ovis* in rams.** *Vet Immunol Immunopathol* 1993, **37**:257–270.
 35. Howarth M, Chinnapen DJ, Gerrow K, Dorrestein PC, Grandy MR, Kelleher NL, El-Husseini A, Ting AY: **A monovalent streptavidin with a single femtomolar biotin binding site.** *Nat Methods* 2006, **3**:267–273.
 36. Osborn MJ, Rosen SM, Rothfield L, Horecker BL: **Biosynthesis of bacterial lipopolysaccharide. I. Enzymatic incorporation of galactose in a mutant strain of *Salmonella*.** *Proc Natl Acad Sci U S A* 1962, **48**:1831–1838.
 37. Grilló MJ, Manterola L, De Miguel MJ, Muñoz PM, Blasco JM, Moriyón I, López-Goñi I: **Increases of efficacy as vaccine against *Brucella abortus* infection in mice by simultaneous inoculation with avirulent smooth bvrS/bvrR and rough wbkA mutants.** *Vaccine* 2006, **24**:2910–2916.
 38. House JK, Smith BP, O'Connell K, VanMetre DC: **Isotype-specific antibody responses of cattle to *Salmonella* Dublin lipopolysaccharide and porin following *Salmonella* Dublin vaccination and acute and chronic infection.** *J Vet Diagn Invest* 2001, **13**:213–218.
 39. San Román B, De Andrés X, Muñoz PM, Obregón P, Asensio AC, Garrido V, Mansilla C, Arribillaga L, Lasarte JJ, De Andrés D, Amorena B, Grilló MJ: **The extradomain A of fibronectin (EDA) combined with poly(I:C) enhances the immune response to HIV-1 p24 protein and the protection against recombinant *Listeria monocytogenes*-Gag infection in the mouse model.** *Vaccine* 2012, **30**:2564–2569.
 40. Bjur E, Eriksson-Ygberg S, Rhen M: **The O-antigen affects replication of *Salmonella enterica* serovar Typhimurium in murine macrophage-like J774-A.1 cells through modulation of host cell nitric oxide production.** *Microbes Infect* 2006, **8**:1826–1838.
 41. Hone D, Morona R, Attridge S, Hackett J: **Construction of defined galE mutants of *Salmonella* for use as vaccines.** *J Infect Dis* 1987, **156**:167–174.
 42. Grossiord B, Vaughan EE, Luesink E, de Vos WM: **Genetics of galactose utilisation via the Leloir pathway in lactic acid bacteria.** *Lait* 1998, **78**:77–84.
 43. Clarke RC, Gyles CL: **Galactose epimeraseless mutants of *Salmonella* Typhimurium as live vaccines for calves.** *Can J Vet Res* 1986, **50**:165–173.
 44. Germanier R, Furer E: **Immunity in experimental salmonellosis II. Basis for the avirulence and protective capacity of gal E mutants of *Salmonella* Typhimurium.** *Infect Immun* 1971, **4**:663–673.
 45. Huang CF, Wang CC, Wu TC, Wu KG, Lee CC, Peng HJ: **Neonatal sublingual vaccination with *Salmonella* proteins and adjuvant cholera toxin or CpG oligodeoxynucleotides induces mucosal and systemic immunity in mice.** *J Pediatr Gastroenterol Nutr* 2008, **46**:262–271.
 46. Udhayakumar V, Muthukkaruppan V: **Protective immunity induced by porin against *Salmonella* infection in mice.** *Indian J Med Res* 1989, **89**:121–127.
 47. Masoud H: **LPS-based conjugate vaccines composed of saccharide antigens of smooth-type *Salmonella* Enteritidis and rough-type *Salmonella* Gallinarum 9R bound to bovine serum albumin.** *Scand J Infect Dis* 2007, **39**:315–322.
 48. Ochoa J, Irache JM, Tamayo I, Walz A, DelVecchio VG, Gamazo C: **Protective immunity of biodegradable nanoparticle-based vaccine against an experimental challenge with *Salmonella* Enteritidis in mice.** *Vaccine* 2007, **25**:4410–4419.
 49. George A, Shroff KE, Rath S, Ghosh SN, Sengupta SR, Kamat RS:

Route-related variation in the immunogenicity of killed *Salmonella* Enteritidis vaccine: role of antigen presenting cells. *Microbiol Immunol* 1989, **33**:479–488.

50. Muthukkumar S, Muthukkaruppan VR: Mechanism of protective immunity induced by porin-lipopolysaccharide against murine salmonellosis. *Infect Immun* 1993, **61**:3017–3025.
51. Zenk SF, Jantsch J, Hensel M: Role of *Salmonella enterica* lipopolysaccharide in activation of dendritic cell functions and bacterial containment. *J Immunol* 2009, **183**:2697–2707.

doi:10.1186/1297-9716-43-31

Cite this article as: Román *et al.*: The extradomain a of fibronectin enhances the efficacy of lipopolysaccharide defective *Salmonella* bacterins as vaccines in mice. *Veterinary Research* 2012 **43**:31.

**Submit your next manuscript to BioMed Central
and take full advantage of:**

- Convenient online submission
- Thorough peer review
- No space constraints or color figure charges
- Immediate publication on acceptance
- Inclusion in PubMed, CAS, Scopus and Google Scholar
- Research which is freely available for redistribution

Submit your manuscript at
www.biomedcentral.com/submit

