

# SCIENTIFIC REPORTS



OPEN

## Functional evaluation of *TERT-CLPTM1L* genetic variants associated with susceptibility of papillary thyroid carcinoma

Received: 12 January 2016

Accepted: 26 April 2016

Published: 17 May 2016

Minghua Ge<sup>1,\*</sup>, Meng Shi<sup>2,\*</sup>, Changming An<sup>3,\*</sup>, Wenjun Yang<sup>4</sup>, Xilin Nie<sup>1</sup>, Jian Zhang<sup>5</sup>, Zheng Lv<sup>6</sup>, Jinliang Li<sup>2</sup>, Liqing Zhou<sup>7</sup>, Zhongli Du<sup>8</sup> & Ming Yang<sup>9</sup>

*TERT* is the catalytic subunit of telomerase which plays an essential part in cellular immortality by maintaining telomere integrity. *TERT* is commonly over-expressed in human malignancies, indicating its key role in cell transformation. The chromosome 5p15.33 *TERT-CLPTM1L* region has been associated with susceptibility of multiple cancers via a genome-wide association approach. However, the involvement of this locus in papillary thyroid carcinoma (PTC) etiology is still largely unknown. We analyzed 15 haplotype-tagging single nucleotide polymorphisms (htSNPs) of the *TERT-CLPTM1L* region in a two stage case-control design. After genotyping 2300 PTC patients and frequency-matched 2300 unaffected controls, we found that *TERT* rs2736100 genetic variant is significantly associated with elevated PTC risk. *Ex vivo* reporter gene assays indicated that the PTC susceptibility rs2736100 polymorphism locating in a potential *TERT* intronic enhancer has a genotype-specific effect on *TERT* expression. Correlations between rs2736100 genotypes and tissue-specific *TERT* expression supported the regulatory function of this genetic variant *in vivo*. Our data demonstrated that the functional *TERT* rs2736100 SNP as a novel genetic component of PTC etiology. This study, together with recent studies in other cancers, unequivocally establishes an essential role of *TERT* in cancers.

Thyroid carcinoma is the most common endocrine malignancy and showed quickly increased incidence over last two decades. According to the Chinese Cancer Registry, the incidence of thyroid carcinoma is 6.6 per 100,000 individuals in China<sup>1,2</sup>. Papillary thyroid carcinoma (PTC), named for their papillary histological architecture, accounts for about eighty percent of all thyroid carcinomas. Ionizing radiation, nodular disease of the thyroid and family history account for known risk factors of PTC currently<sup>3</sup>. However, only a portion of exposed individuals develop PTC, suggesting that genetic factors may also impact thyroid malignant transformation<sup>4</sup>.

Accumulated evidences demonstrated that the chromosome 5p15.33 region (*TERT-CLPTM1L*) is a common susceptibility locus of multiple cancers. Genome-wide association studies (GWAS) declared that independent susceptibility single nucleotide polymorphisms (SNPs) in 5p15.33 were identified in different malignancies, including lung cancer<sup>5–10</sup>, melanoma<sup>11</sup>, nonmelanoma skin cancer<sup>11,12</sup>, glioma<sup>13</sup>, bladder cancer<sup>14</sup>, pancreatic cancer<sup>15</sup>, testicular germ cell cancer<sup>16</sup>, estrogen-negative breast cancer<sup>17</sup>, ovarian cancer<sup>18</sup> and prostate cancer<sup>19</sup>. Therefore, it is plausible that several functional DNA elements might exist in the region and influence cancer etiology. There are two known oncogenes, *TERT* and *CLPTM1L*, in the locus. Activated *TERT* (telomerase reverse

<sup>1</sup>Department of Head and Neck Surgery, Zhejiang Province Cancer Hospital, Hangzhou, Zhejiang Province, China.

<sup>2</sup>College of Life Science and Technology, Beijing University of Chemical Technology, Beijing, China. <sup>3</sup>Department of Head and Neck Surgical Oncology, Cancer Hospital, Chinese Academy of Medical Sciences, Beijing, China. <sup>4</sup>Key Laboratory of Fertility Preservation and Maintenance (Ministry of Education), Ningxia Medical University, Yinchuan, Ningxia, China. <sup>5</sup>Department of Clinical Laboratory, Qilu Hospital of Shandong University, Jinan, Shandong Province, China. <sup>6</sup>Cancer Center, The First Affiliated Hospital of Jilin University, Changchun, Jilin Province, China. <sup>7</sup>Department of Radiation Oncology, Huaian No. 2 Hospital, Huaian, Jiangsu Province, China. <sup>8</sup>Department of Hematology, National Center for Clinical Laboratories and Beijing Hospital, Beijing, China. <sup>9</sup>Shandong Key Laboratory of Radiation Oncology, Cancer Research Center, Shandong Cancer Hospital and Institute, Jinan, Shandong Province, China.

\*These authors contributed equally to this work. Correspondence and requests for materials should be addressed to M.G. (email: gemingh@163.com) or M.Y. (email: aaryoung@yeah.net)

| Variable                | Zhejiang case-control set<br>(Discovery set) |           |                      | Jiangsu case-control set<br>(Validation set 1) |           |                      | Jilin case-control set<br>(Validation set 2) |           |                      |
|-------------------------|--|-----------|----------------------|--|-----------|----------------------|--|-----------|----------------------|
|                         | Cases  | Controls  | P-value <sup>a</sup> | Cases  | Controls  | P-value <sup>a</sup> | Cases  | Controls  | P-value <sup>a</sup> |
|                         | No. (%)                                      | No. (%)   |                      | No. (%)  | No. (%)   |                      | No. (%)                                      | No. (%)   |                      |
|                         | 500  | 500       |                      | 1000   | 1000      |                      | 800  | 800       |                      |
| Sex                     |  |           | 0.560                |  |           | 0.223                |  |           | 0.774                |
| Male                    | 122(24.4)                                    | 130(26.0) |                      | 251(25.1)                                      | 275(27.5) |                      | 200(25.0)                                    | 205(25.6) |                      |
| Female                  | 378(75.6)                                    | 370(74.0) |                      | 749(74.96)                                     | 725(72.5) |                      | 600(75.0)                                    | 595(74.4) |                      |
| Age (year) <sup>2</sup> |  |           | 0.486                |  |           | 0.823                |  |           | 0.453                |
| ≤46(or 48)              | 258(51.6)                                    | 269(53.8) |                      | 526(52.6)                                      | 521(52.1) |                      | 411(51.4)                                    | 426(53.2) |                      |
| >46(or 48)              | 242(48.4)                                    | 231(46.2) |                      | 474(47.4)                                      | 479(47.9) |                      | 389(48.6)                                    | 374(46.8) |                      |

**Table 1. Distribution of selected characteristics among PTC cases and controls.** Note: PTC, papillary thyroid carcinoma. <sup>1</sup>Two-sided  $\chi^2$  test. <sup>2</sup>Median ages of cases for Zhejiang case-control set, Jiangsu case-control set and Jilin case-control set are 46, 48 and 48 years.

transcriptase) transcription enhances telomerase activities and accelerates malignant transformation<sup>20,21</sup>. In lung cancer, oncogene *CLPTMIL* (cleft lip and palate-associated transmembrane 1 like protein) plays an a proto-oncogenic role and is critical for Ras-driven lung cancers<sup>22–24</sup>. In pancreatic cancer, *CLPTMIL* functions as a growth-promoting gene and its overexpression may lead to an abrogation of normal cytokinesis and enhance aneuploidy in pancreatic cancer cells<sup>22–24</sup>.

Considering the impacts of the 5p15.33 *TERT-CLPTMIL* locus on PTC susceptibility is still largely unknown, we examined the associations between 15 haplotype-tagging SNPs (htSNP) covering the entire *TERT-CLPTMIL* locus and PTC risk in three large independent case-control studies. To investigate the biological function of the PTC susceptibility *TERT* rs2736100 SNP, we examined impacts of its genotypes on *TERT* expression *ex vivo* and *in vivo*.

## Material and Methods

**Study subjects.** A total of three case-control sets were included in the current study. (i) Zhejiang set: 500 PTC cases from Zhejiang Province Cancer Hospital (Hangzhou, Zhejiang Province, China) and sex- and age-matched 500 controls. (ii) Jiangsu set: 1000 cases with PTC from Huaian No. 2 Hospital (Huaian, Jiangsu Province, China) and sex- and age-matched ( $\pm 5$  years) 1000 healthy controls. (iii) Jilin set: 800 PTC patients from The First Affiliated Hospital of Jilin University (Changchun, Jilin Province, China) and 800 sex- and age-matched healthy controls. Sixty pairs of PTC specimens and thyroid normal tissues adjacent to the tumors were obtained from surgically removed specimens of patients in Zhejiang Province Cancer Hospital and Huaian No. 2 Hospital. All individuals were ethnic Han Chinese. The detailed information on subject recruitments can be found in Table 1. This study was approved by the institutional Review Boards of Zhejiang Province Cancer Hospital, Huaian No. 2 Hospital and The First Affiliated Hospital of Jilin University. At recruitment, the written informed consent was obtained from each subject. The methods were carried out in accordance with the approved guidelines.

**SNP selection and genotyping.** An htSNP approach was used to investigate genetic polymorphisms in the *TERT-CLPTMIL* locus globally (a 91716 bp region of chromosome 5p15.33)<sup>25–27</sup>. HapMap SNPs which have been genotyped among Han Chinese and Japanese populations (HapMap Rel 21, NCBI B36) with a minor allele frequency  $> 5\%$  were included in htSNP selection. A total of 15 htSNPs were chosen in a 95716 bp region (the 91716 bp *TERT-CLPTMIL* locus and 2 kb up-stream plus 2 kb down-stream regions of the locus). The selection criteria included the sample size inflation factor,  $R_h^2$ , of  $\geq 0.8$  and a block-by-block method using Haploview 4.2 software (Supplementary Table 1). All htSNPs were genotyped through the MassArray system (Sequenom Inc., San Diego, California, USA). A 5% blind, random DNA samples was analyzed in duplicates and the reproducibility was 99%. To reduce the costs of the study, we genotyped the *TERT* rs2736100 T  $>$  G SNP in two validation sets using the PCR-based restriction fragment length polymorphism (RFLP) as described in Supplementary Table 2. A 5% samples were genotyped by two investigators and the reproducibility was 98.5%.

**Dual-luciferase reporter gene assays.** The intron 2 region of *TERT* (including the rs2736100 flanking region) was amplified with human genomic DNA from healthy control individuals carrying either *TERT* rs2736100 TT genotype or rs2736100 GG genotype. Specific PCR primer pairs with the *KpnI* and *XhoI* restriction sites were showed in Supplementary Table 3. The PCR products were digested and ligated into an appropriately digested pGL3-Basic vector. The resultant *TERT* reporter gene plasmids were designated pTERT-T or pTERT-G, which were only different at the rs2736100 polymorphic site. Sanger sequencing of the insertions confirmed the orientation and integrity of the two constructs.

Both reporter gene constructs (pGL3-Basic, pTERT-T, or pTERT-G) and pRL-SV40 (Luciferase Assay System; Promega) were transfected into PTC cell line BCPAP cells or HEK293 cells. As previously described, dual luciferase activities were determined at 48 h after transfection<sup>28</sup>. For each plasmid construct, three independent transfection experiments were performed, and each was done in triplicates.

**Real-time qPCR of *TERT* mRNA.** Total cellular RNA was isolated from sixty pairs of PTC specimens and normal tissues adjacent to the tumors with TRIzol Reagent (Invitrogen) and converted to cDNA using

| No. | rs ID            | Position       | Base change     | MAF <sup>1</sup> | Genotype (500 cases and 500 controls) |                           |                   | OR(95% CI) <sup>3</sup> | P-value <sup>3</sup>         |
|-----|------------------|----------------|-----------------|------------------|---------------------------------------|---------------------------|-------------------|-------------------------|------------------------------|
|     |                  |                |                 |                  | Common <sup>2</sup>                   | Heterozygous <sup>2</sup> | Rare <sup>2</sup> |                         |                              |
| 1   | rs2853691        | 1305950        | T > C           | 0.184            | 66.9/67.2                             | 28.9/28.8                 | 2.1/2.0           | 1.02(0.81–1.28)         | 0.871                        |
| 2   | rs2736122        | 1310621        | G > A           | 0.045            | 91.9/91.0                             | 8.1/9.0                   | 0/0               | 0.91(0.59–1.40)         | 0.656                        |
| 3   | rs2075786        | 1319310        | A > G           | 0.196            | 65.3/64.3                             | 31.4/32.1                 | 3.3/3.6           | 0.96(0.77–1.20)         | 0.700                        |
| 4   | rs4246742        | 1320356        | T > A           | 0.425            | 32.6/31.9                             | 50.1/51.2                 | 17.3/16.9         | 1.01(0.84–1.20)         | 0.949                        |
| 5   | rs4975605        | 1328528        | C > A           | 0.145            | 73.1/72.2                             | 25.5/26.6                 | 1.4/1.2           | 1.03(0.80–1.32)         | 0.841                        |
| 6   | <b>rs2736100</b> | <b>1339516</b> | <b>T &gt; G</b> | <b>0.413</b>     | <b>26.6/35.2</b>                      | <b>48.0/47.0</b>          | <b>25.4/17.8</b>  | <b>1.39(1.16–1.66)</b>  | <b>2.7 × 10<sup>-4</sup></b> |
| 7   | rs2853676        | 1341547        | C > T           | 0.134            | 78.1/75.1                             | 19.5/23.1                 | 2.4/1.8           | 0.90(0.69–1.17)         | 0.645                        |
| 8   | rs2736098        | 1347086        | C > T           | 0.335            | 42.4/43.3                             | 46.9/46.5                 | 10.7/10.2         | 0.97(0.81–1.17)         | 0.741                        |
| 9   | rs2853668        | 1353025        | G > T           | 0.260            | 54.0/54.6                             | 39.1/38.8                 | 6.9/6.6           | 0.99(0.81–1.20)         | 0.893                        |
| 10  | rs2735845        | 1353584        | C > G           | 0.322            | 47.7/47.7                             | 41.2/40.2                 | 11.1/12.1         | 0.98(0.81–1.18)         | 0.811                        |
| 11  | rs6554759        | 1370102        | A > G           | 0.154            | 72.2/71.9                             | 25.1/25.5                 | 2.7/2.6           | 0.99(0.78–1.27)         | 0.951                        |
| 12  | rs451360         | 1372680        | C > A           | 0.177            | 71.7/70.1                             | 25.0/26.1                 | 3.3/3.8           | 0.92(0.73–1.17)         | 0.512                        |
| 13  | rs380286         | 1373247        | G > A           | 0.156            | 70.0/71.4                             | 26.9/26.1                 | 3.1/2.5           | 1.08(0.85–0.37)         | 0.543                        |
| 14  | rs402710         | 1373722        | C > T           | 0.314            | 45.6/47.6                             | 42.9/42.1                 | 11.5/10.3         | 1.08(0.89–0.30)         | 0.444                        |
| 15  | rs452932         | 1383253        | T > C           | 0.196            | 63.8/65.1                             | 31.3/30.7                 | 4.9/4.2           | 1.06(0.86–1.32)         | 0.577                        |

**Table 2. Associations between candidate SNPs in the *TERT-CLPTMIL* locus and risk of PTC in Zhejiang case-control set.** Note: PTC, papillary thyroid carcinoma; MAF, minor allele frequency; OR, odds ratios; 95%CI, 95% confident intervals. <sup>1</sup>MAF in healthy controls. <sup>2</sup>% of case/% of control. <sup>3</sup>Allelic OR calculated by logistic regression.

the PrimeScript RT Master Mix (TaKaRa). *TERT* mRNA expression in tissues was analyzed using the TaqMan real-time qPCR method. Relative gene expression quantization for *TERT* (ABI, Assay ID Hs00972656\_m1) was calculated using  $\beta$ -actin (ABI, Assay ID 4333762T) as an internal reference gene was carried out using the ABI 7500 real-time PCR system in triplicates.

**Statistics.** The Pearson chi-square test was used to examine selected characteristics between PTC cases and controls for categorical variables. The associations between *TERT-CLPTMIL* genotypes and PTC risk were estimated by odds ratios (ORs) and their 95% confidence intervals (CIs) computed by logistic regression models. All ORs were adjusted for age or sex, where it was appropriate. One-way ANOVA was used for the correlations between genotypes of rs2736100 and *TERT* mRNA expression. A *P* value of less than 0.05 was used as the criterion of statistical significance. All statistical tests were two-sided and performed using SPSS 16.0 (SPSS Inc.).

## Results

Table 2 showed genotype distributions of 15 SNPs in the *TERT-CLPTMIL* loci in the Zhejiang discovery set. All observed genotype frequencies in both PTC patients and controls conform to Hardy-Weinberg equilibrium (all  $P > 0.05$ ). Among the 15 SNPs, frequencies of rs2736100 genotypes among cases differed significantly from those among healthy controls ( $P < 0.05$ ). In details, rs2736100 genetic variant was associated with significantly elevated PTC risk (allelic OR = 1.39, 95% CI = 1.16–1.66,  $P = 7.0 \times 10^{-6}$ ) (Table 2). There were no statistically significant associations between other 14 SNPs and PTC risk (all  $P > 0.05$ ) (Table 2), we did not examine these SNPs in the next analyses.

Logistic regression analyses showed that the rs2736100 G allele was a risk allele. Subjects having the TG genotype had an OR of 1.34 (95% CI = 1.01–1.79,  $P = 0.047$ ) for developing PTC compared with subjects having the TT genotype. It was observed that the odds of having the rs2736100 GG genotype in cases was 1.36 (95% CI = 1.14–1.62,  $P = 7.4 \times 10^{-4}$ ) compared with the TT genotype. In Jiangu validation set, a significantly increased OR was also associated with the rs2736100 GT or GG genotype (OR = 1.44, 95% CI = 1.18–1.76,  $P = 0.003$ ) or (OR = 1.43, 95% CI = 1.26–1.62,  $P = 3.8 \times 10^{-6}$ ). Moreover, the significant association between rs2736100 SNP and PTC risk were also observed in Jilin validation set (Table 3). Individuals with rs2736100 GG genotype showed significantly increased PTC risk compared with those with rs2736100 TT genotype (OR = 1.18, 95% CI = 1.02–1.37,  $P = 0.025$ ). However, rs2736100 GT genotype was not significantly associated with PTC risk (OR = 1.05, 95% CI = 0.82–1.34,  $P = 0.695$ ) in Jilin set. The PTC risk associated with the rs2736100 genetic variant was further examined by stratifying for age and sex using the combined data of three case-control sets (Table 4). Significant associations between rs2736100 TG or GG genotype and PTC risk were observed in all stratified groups (all  $P < 0.05$ ).

Since the rs2736100 variant locates in the *TERT* intron 2 region, we investigated the impacts of this polymorphism on *TERT* gene expression via dual-luciferase reporter gene assays (Fig. 1). We found that the intron 2 segment containing the rs2736100 flanking sequence showed enhancer activities in HEK293 cells or BCPAP PTC cells. Moreover, the *TERT* rs2736100G allelic reporter construct (pTERT-G) showed significantly higher luciferase activities compared to the rs2736100T allelic reporter construct (pTERT-T) in HEK293 cells ( $P < 0.01$ ) or BCPAP PTC cells ( $P < 0.05$ ) (Fig. 1).

We next examined the allele-specific effect of rs2736100 polymorphism on *TERT* gene expression in thyroid tissue specimens. Interestingly, significant up-regulation of *TERT* in PTC tissues was observed compared with

| Studies      | rs2736100 T > G |               |                  |                          |                        |
|--------------|-----------------|---------------|------------------|--------------------------|------------------------|
|              | Genotypes       | Cases No. (%) | Controls No. (%) | OR <sup>2</sup> (95% CI) | P-value                |
|              |                 | n = 500       | n = 500          |                          |                        |
| Zhejiang set | TT              | 133(26.6)     | 176(35.2)        | Reference                |                        |
|              | TG              | 240(48.0)     | 235(47.0)        | 1.34(1.01–1.79)          | 0.047                  |
|              | GG              | 127(25.4)     | 89(17.8)         | 1.36(1.14–1.62)          | 7.4 × 10 <sup>-4</sup> |
|              |                 | n = 1000      | n = 1000         |                          |                        |
| Jiangsu set  | TT              | 293(29.3)     | 398(39.8)        | Reference                |                        |
|              | TG              | 476(47.6)     | 448(44.8)        | 1.44(1.18–1.76)          | 0.003                  |
|              | GG              | 231(23.1)     | 154(15.4)        | 1.43(1.26–1.62)          | 3.8 × 10 <sup>-6</sup> |
|              |                 | n = 800       | n = 800          |                          |                        |
| Jilin set    | TT              | 218(27.3)     | 301(37.6)        | Reference                |                        |
|              | TG              | 377(47.1)     | 373(46.6)        | 1.05(0.82–1.34)          | 0.695                  |
|              | GG              | 205(25.6)     | 126(15.8)        | 1.18(1.02–1.37)          | 0.025                  |
|              |                 | n = 2300      | n = 2300         |                          |                        |
| Pooled       | TT              | 644(28.0)     | 875(38.0)        | Reference                |                        |
|              | TG              | 1093(47.5)    | 1056(45.9)       | 1.41(1.23–1.60)          | 4.9 × 10 <sup>-6</sup> |
|              | GG              | 563(24.5)     | 369(16.0)        | 1.44(1.33–1.56)          | 8.5 × 10 <sup>-8</sup> |

**Table 3. Genotype frequencies of rs2736100 T > G SNP in the *TERT-CLPTMIL* locus among cases and controls and their association with PTC risk.** Note: PTC, papillary thyroid carcinoma; OR, odds ratio; CI, confidence interval. <sup>1</sup>Data were calculated by logistic regression with adjustment for age and sex.

| Variable   | rs2736100 T > G |                 |                          |         |                 |                          |                        |
|------------|-----------------|-----------------|--------------------------|---------|-----------------|--------------------------|------------------------|
|            | TT <sup>1</sup> | TG <sup>1</sup> | OR <sup>2</sup> (95% CI) | P-value | GG <sup>1</sup> | OR <sup>2</sup> (95% CI) | P-value                |
| Sex        |                 |                 |                          |         |                 |                          |                        |
| Male       | 156/245         | 275/277         | 1.57(1.21–2.03)          | 0.001   | 142/88          | 1.59(1.35–1.88)          | 4.3 × 10 <sup>-6</sup> |
| Female     | 488/630         | 818/779         | 1.35(1.16–1.58)          | 0.001   | 421/281         | 1.39(1.27–1.53)          | 1.3 × 10 <sup>-6</sup> |
| Age (year) |                 |                 |                          |         |                 |                          |                        |
| ≤47        | 314/446         | 536/532         | 1.43(1.19–1.73)          | 0.001   | 287/176         | 1.52(1.35–1.72)          | 3.3 × 10 <sup>-6</sup> |
| >47        | 330/429         | 557/524         | 1.38(1.15–1.67)          | 0.001   | 276/193         | 1.36(1.21–1.53)          | 2.1 × 10 <sup>-5</sup> |

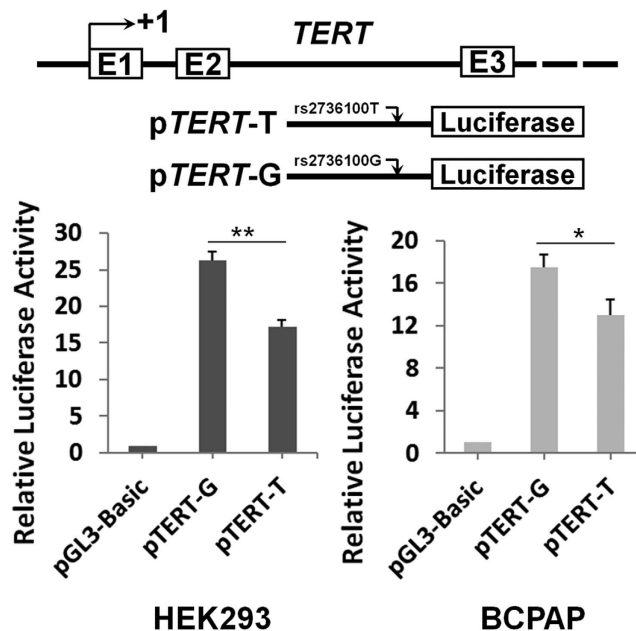
**Table 4. Risk of PTC associated with rs2736100 T > G genotypes by age and sex.** Note: PTC, papillary thyroid carcinoma; OR, odds ratio; CI, confidence interval. <sup>1</sup>Number of case patients with genotype/number of control subjects with genotype. <sup>2</sup>Data were calculated by logistic regression, adjusted for sex and age, where it was appropriate.

normal tissues ( $P = 0.0003$ ). We found that subjects with the rs2736100 GG or GT genotype had significantly lower *TERT* mRNA levels (mean ± SE) than those with the TT genotype in normal thyroid tissues ( $0.538 \pm 0.078$  [the rs2736100 GG genotype,  $n = 16$ ] or  $0.322 \pm 0.023$  [the rs2736100 GT genotype,  $n = 27$ ] vs.  $0.164 \pm 0.024$  [the rs2736100 TT genotype,  $n = 17$ ], both  $P < 0.05$ ). As shown in Fig. 2B, similar results were found in PTC tissues ( $1.550 \pm 0.188$  [the rs2736100 GG genotype,  $n = 16$ ] or  $0.441 \pm 0.036$  [the rs2736100 GT genotype,  $n = 27$ ] vs.  $0.214 \pm 0.026$  [the rs2736100 TT genotype,  $n = 17$ ], both  $P < 0.01$ ).

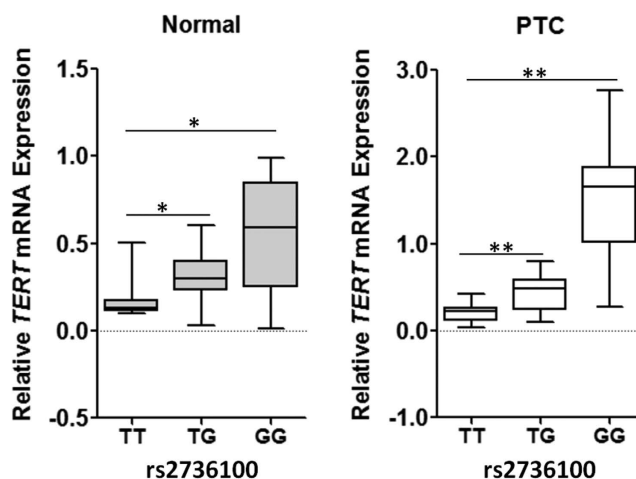
## Discussion

In this study, we systematically evaluated PTC susceptibility genetic variants in the *TERT-CLPTMIL* locus and their regulatory role in *TERT* gene expression *ex vivo* and *in vivo*. In the discovery case-control set, we identified one PTC susceptibility genetic variant (rs2736100) after genotyping 15 *TERT-CLPTMIL* htSNPs. The significant association between *TERT* rs2736100 and PTC was validated in two validation case-control sets. *Ex vivo* luciferase gene assays demonstrated that the PTC susceptibility rs2736100 polymorphism locates in a potential *TERT* intronic enhancer and has a genotype-specific impact on *TERT* expression. Additionally, correlations between rs2736100 genotypes and tissue-specific *TERT* gene expression levels supported the regulatory function of this genetic variant *in vivo*.

*TERT* is the catalytic subunit of telomerase which that plays a essential part in cellular immortality by maintaining telomere length at the end of chromosomes<sup>29,30</sup>. *TERT* is well-known to be over-expressed in many human malignancies, indicating its key role in transformation of human normal cells<sup>31</sup>. In line with this, transgenic mice with induced *TERT* expression showed significantly increased development of tumors<sup>32,33</sup>. High *TERT* expression and telomerase activity have been found in thyroid cancers, particularly in the advanced forms of the disease<sup>34,35</sup>. Additionally, highly prevalent *TERT* promoter mutations have been repeatedly found in PTC, which highlighting the importance of in etiology of PTC<sup>36–38</sup>.



**Figure 1.** Transient luciferase reporter gene expression assays with constructs containing different rs2736100 allele of the *TERT* intron 2 region in HEK293 cells (A) or BCPAP cells (B). pRL-SV40 were cotransfected with these constructs to standardize transfection efficiency. Fold-changes were detected by defining the luciferase activity of cells co-transfected with pGL3-basic as 1. All experiments were performed in triplicates in three independent transfection experiments and each value represents mean  $\pm$  SD. Compared with pGL3-Basic transfected cells, \* $P < 0.05$ ; \*\* $P < 0.01$ .



**Figure 2.** *TERT* mRNA expression in normal and cancerous thyroid tissues grouped by rs2736100 genotypes. The expression of individual *TERT* mRNA was calculated relative to expression of  $\beta$ -actin using the  $2^{-\Delta\Delta Ct}$  method. \*\* $P < 0.01$ .

Although the *TERT* rs2736100 SNP were repeatedly identified as a susceptibility polymorphisms in many cancers<sup>4–16</sup>, its role in PTC etiology is still largely unknown even after several GWAS of thyroid cancer published<sup>439–41</sup>. To the best of our knowledge, this is the first study to examine the association between the *TERT* rs2736100 polymorphism and PTC risk. We believe that the association between the rs2736100 SNP and increased PTC risk is biologically plausible since the PTC susceptibility rs2736100 G allele showed consistently higher oncogene *TERT* gene expression than T allele.

In all, we identified the functional *TERT* rs2736100 genetic polymorphism as a novel genetic component of the PTC etiology in Chinese populations. This study, together with recent studies in other cancers, unequivocally establishes an important role of *TERT* SNPs in cancer development, especially human thyroid cancer. However, further investigations in additional ethnic populations are desirable to validate our observations.

## References

- Chen, W. *et al.* Annual report on status of cancer in China, 2011. *Chin J Cancer Res* **27**, 2–12 (2015).
- Schneider, A. B. & Sarne, D. H. Long-term risks for thyroid cancer and other neoplasms after exposure to radiation. *Nat Clin Pract Endocrinol Metab* **1**, 82–91 (2005).
- Goldgar, D. E., Easton, D. F., Cannon-Albright, L. A. & Skolnick, M. H. Systematic population-based assessment of cancer risk in first-degree relatives of cancer probands. *J Natl Cancer Inst* **86**, 1600–1608 (1994).
- Wang, Y. *et al.* Common 5p15.33 and 6p21.33 variants influence lung cancer risk. *Nat Genet* **40**, 1407–1409 (2008).
- McKay, J. D. *et al.* Lung cancer susceptibility locus at 5p15.33. *Nat Genet* **40**, 1404–1406 (2008).
- Broderick, P. *et al.* Deciphering the impact of common genetic variation on lung cancer risk: a genome-wide association study. *Cancer Res* **69**, 6633–6641 (2009).
- Landi, M. T. *et al.* A genome-wide association study of lung cancer identifies a region of chromosome 5p15 associated with risk for adenocarcinoma. *Am J Hum Genet* **85**, 679–691 (2009).
- Wang, Z. *et al.* Imputation and subset-based association analysis across different cancer types identifies multiple independent risk loci in the TERT-CLPTM1L region on chromosome 5p15.33. *Hum Mol Genet* **23**, 6616–6633 (2014).
- Rafnar, T. *et al.* Sequence variants at the TERT-CLPTM1L locus associate with many cancer types. *Nat Genet* **41**, 221–227 (2009).
- Stacey, S. N. *et al.* New common variants affecting susceptibility to basal cell carcinoma. *Nat Genet* **41**, 909–914 (2009).
- Yang, X., Yang, B., Li, B. & Liu, Y. Association between TERT-CLPTM1L rs401681[C] allele and NMSC cancer risk: a meta-analysis including 45,184 subjects. *Arch Dermatol Res* **305**, 49–52 (2013).
- Shete, S. *et al.* Genome-wide association study identifies five susceptibility loci for glioma. *Nat Genet* **41**, 899–904 (2009).
- Rothman, N. *et al.* A multi-stage genome-wide association study of bladder cancer identifies multiple susceptibility loci. *Nat Genet* **42**, 978–984 (2010).
- Petersen, G. M. *et al.* A genome-wide association study identifies pancreatic cancer susceptibility loci on chromosomes 13q22.1, 1q32.1 and 5p15.33. *Nat Genet* **42**, 224–228 (2010).
- Turnbull, C. *et al.* Variants near DMRT1, TERT and ATF7IP are associated with testicular germ cell cancer. *Nat Genet* **42**, 604–607 (2010).
- Haiman, C. A. *et al.* A common variant at the TERT-CLPTM1L locus is associated with estrogen receptor-negative breast cancer. *Nat Genet* **43**, 1210–1214 (2011).
- Beesley, J. *et al.* Functional polymorphisms in the TERT promoter are associated with risk of serous epithelial ovarian and breast cancers. *PLoS One* **6**, e24987 (2011).
- Kote-Jarai, Z. *et al.* Seven prostate cancer susceptibility loci identified by a multi-stage genome-wide association study. *Nat Genet* **43**, 785–791 (2011).
- Kim, N. W. *et al.* Specific association of human telomerase activity with immortal cells and cancer. *Science* **266**, 2011–2015 (1994).
- Kolquist, K. A. *et al.* Expression of TERT in early premalignant lesions and a subset of cells in normal tissues. *Nat Genet* **19**, 182–186 (1998).
- James M. A. *et al.* Functional characterization of CLPTM1L as a lung cancer risk candidate gene in the 5p15.33 locus. *PLoS One* **7**, e36116 (2012).
- James, M. A. *et al.* CRR9/CLPTM1L regulates cell survival signaling and is required for Ras transformation and lung tumorigenesis. *Cancer Res* **74**, 1116–1127 (2014).
- Jia, J. *et al.* CLPTM1L promotes growth and enhances aneuploidy in pancreatic cancer cells. *Cancer Res* **74**, 2785–2795 (2014).
- Zhang, X. *et al.* The identification of an ESCC susceptibility SNP rs920778 that regulates the expression of lncRNA HOTAIR via a novel intronic enhancer. *Carcinogenesis* **35**, 2062–2067 (2014).
- Wang, H. *et al.* The ALDH7A1 genetic polymorphisms contribute to development of papillary thyroid carcinoma. *Tumour Biol* **35**, 12665–12670 (2014).
- Yang, M. *et al.* SLCO2B1 and SLCO1B3 may determine time to progression for patients receiving androgen deprivation therapy for prostate cancer. *J Clin Oncol* **29**, 2565–2573 (2011).
- Zhang, X. *et al.* A functional BRCA1 coding sequence genetic variant contributes to risk of papillary thyroid carcinoma. *Carcinogenesis* **34**, 2309–2313 (2013).
- Smekalova, E. M. *et al.* Telomerase RNA biosynthesis and processing. *Biochemistry (Mosc)* **77**, 1120–1128 (2012).
- Mocellin, S., Pooley, K. A. & Nitti, D. Telomerase and the search for the end of cancer. *Trends Mol Med* **19**, 125–133 (2013).
- Blasco, M. A. Telomeres and human disease: ageing, cancer and beyond. *Nat Rev Genet* **6**, 611–622 (2005).
- González-Suárez, E. *et al.* Increased epidermal tumors and increased skin wound healing in transgenic mice overexpressing the catalytic subunit of telomerase, mTERT, in basal keratinocytes. *EMBO J* **20**, 2619–2630 (2001).
- González-Suárez, E., Flores, J. M. & Blasco, M. A. Cooperation between p53 mutation and high telomerase transgenic expression in spontaneous cancer development. *Mol Cell Biol* **22**, 7291–7301 (2002).
- Saji, M. *et al.* Human telomerase reverse transcriptase (hTERT) gene expression in thyroid neoplasms. *Clin Cancer Res* **5**, 1483–1489 (1999).
- Brousset, P. *et al.* Telomerase activity in human thyroid carcinomas originating from the follicular cells. *J Clin Endocrinol Metab* **82**, 4214–4216 (1997).
- Umbricht, C. B. *et al.* Telomerase activity: a marker to distinguish follicular thyroid adenoma from carcinoma. *Cancer Res* **57**, 2144–2147 (1997).
- Liu, X. *et al.* Highly prevalent TERT promoter mutations in aggressive thyroid cancers. *Endocr Relat Cancer* **20**, 603–610 (2013).
- Landa, I. *et al.* Frequent somatic TERT promoter mutations in thyroid cancer: higher prevalence in advanced forms of the disease. *J Clin Endocrinol Metab* **98**, E1562–E1566 (2013).
- Vinagre, J. *et al.* Frequency of TERT promoter mutations in human cancers. *Nat Commun* **4**, 2185 (2013).
- Gudmundsson, J. *et al.* Common variants on 9q22.33 and 14q13.3 predispose to thyroid cancer in European populations. *Nat Genet* **41**, 460–464 (2009).
- Gudmundsson, J. *et al.* Discovery of common variants associated with low TSH levels and thyroid cancer risk. *Nat Genet* **44**, 319–322 (2012).
- Figlioli, G. *et al.* Novel genome-wide association study-based candidate loci for differentiated thyroid cancer risk. *J Clin Endocrinol Metab* **99**, E2084–E2092 (2014).

## Acknowledgements

This study was financially supported by the National High-Tech Research and Development Program of China (2015AA020950); National Natural Science Foundation of China (31271382); the Fundamental Research Funds for the Central Universities (YS1407); the open project of State Key Laboratory of Molecular Oncology (SKL-KF-2015-05).

### Author Contributions

M.Y. and M.G. conceived and designed the experiments; M.S. performed the experiments; M.S. and C.A. analyzed the data; M.G., C.A., W.Y., X.N., Z.W., J.Z., Z.L., J.L., Z.D. and L.Z. contributed materials/analysis tools; M.Y. and M.S. wrote the manuscript. All authors reviewed and approved the manuscript prior to submission.

### Additional Information

**Supplementary information** accompanies this paper at <http://www.nature.com/srep>

**Competing financial interests:** The authors declare no competing financial interests.

**How to cite this article:** Ge, M. *et al.* Functional evaluation of *TERT-CLPTM1L* genetic variants associated with susceptibility of papillary thyroid carcinoma. *Sci. Rep.* **6**, 26037; doi: 10.1038/srep26037 (2016).



This work is licensed under a Creative Commons Attribution 4.0 International License. The images or other third party material in this article are included in the article's Creative Commons license, unless indicated otherwise in the credit line; if the material is not included under the Creative Commons license, users will need to obtain permission from the license holder to reproduce the material. To view a copy of this license, visit <http://creativecommons.org/licenses/by/4.0/>