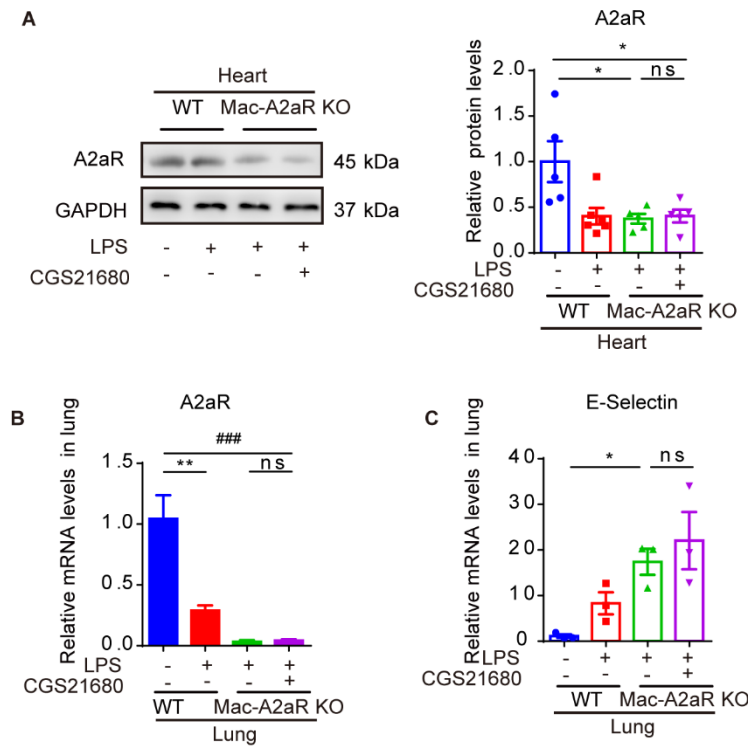


Supplementary Figure1. (A) BMDMs obtained from Mac-A2aR-KO mice or WT mice were stimulated by LPS (1 μ g/mL) or PBS for 12h. (B) WB of A2aR protein expression levels in BMDMs. Quantitation of relative protein expression (n =3). Error bars represent mean \pm SEM. *p < 0.05, ##p < 0.01.



Supplementary Figure2. (A) WT and Mac-A2aR-KO mice were treated with LPS (5 mg/kg) and CGS21680 (1 mg/kg) or PBS for 24h. WB and quantitation of A2aR protein expression in the heart (n=5-6). (B) QPCR of A2aR mRNA expression levels in the lung tissues (n=3). (C) QPCR of E-selectin mRNA expression levels in the lung tissue (n=3). *p or #p < 0.05, **p or ##p < 0.01, ***p or ###p < 0.001.