




Review

# Current Management and Therapeutic Strategies for Cerebral Amyloid Angiopathy

Yasuteru Inoue <sup>1,\*</sup> , Yukio Ando <sup>2</sup>, Yohei Misumi <sup>1</sup> and Mitsuharu Ueda <sup>1</sup>

<sup>1</sup> Department of Neurology, Graduate School of Medical Sciences, Kumamoto University, Kumamoto 860-8556, Japan; misumiyohei@hotmail.co.jp (Y.M.); mitt@rb3.so-net.ne.jp (M.U.)

<sup>2</sup> Department of Amyloidosis Research, Nagasaki International University, Sasebo 859-3298, Japan; andoy709@kumamoto-u.ac.jp

\* Correspondence: yinoue.amyloid@gmail.com; Tel.: +81-96-373-5893; Fax: +81-96-373-5895

**Abstract:** Cerebral amyloid angiopathy (CAA) is characterized by accumulation of amyloid  $\beta$  ( $A\beta$ ) in walls of leptomeningeal vessels and cortical capillaries in the brain. The loss of integrity of these vessels caused by cerebrovascular  $A\beta$  deposits results in fragile vessels and lobar intracerebral hemorrhages. CAA also manifests with progressive cognitive impairment or transient focal neurological symptoms. Although development of therapeutics for CAA is urgently needed, the pathogenesis of CAA remains to be fully elucidated. In this review, we summarize the epidemiology, pathology, clinical and radiological features, and perspectives for future research directions in CAA therapeutics. Recent advances in mass spectrometric methodology combined with vascular isolation techniques have aided understanding of the cerebrovascular proteome. In this paper, we describe several potential key CAA-associated molecules that have been identified by proteomic analyses (apolipoprotein E, clusterin, SRPX1 (sushi repeat-containing protein X-linked 1), TIMP3 (tissue inhibitor of metalloproteinases 3), and HTRA1 (HtrA serine peptidase 1)), and their pivotal roles in  $A\beta$  cytotoxicity,  $A\beta$  fibril formation, and vessel wall remodeling. Understanding the interactions between cerebrovascular  $A\beta$  deposits and molecules that accumulate with  $A\beta$  may lead to discovery of effective CAA therapeutics and to the identification of biomarkers for early diagnosis.

**Keywords:** cerebral amyloid angiopathy; amyloid  $\beta$ ; intracerebral hemorrhage; cerebral microbleeds; superficial siderosis; proteomic analyses



**Citation:** Inoue, Y.; Ando, Y.; Misumi, Y.; Ueda, M. Current Management and Therapeutic Strategies for Cerebral Amyloid Angiopathy. *Int. J. Mol. Sci.* **2021**, *22*, 3869. <https://doi.org/10.3390/ijms22083869>

Academic Editors: Masashi Tanaka, Kenjiro Ono and Satoshi Saito

Received: 11 March 2021

Accepted: 1 April 2021

Published: 8 April 2021

**Publisher's Note:** MDPI stays neutral with regard to jurisdictional claims in published maps and institutional affiliations.



**Copyright:** © 2021 by the authors. Licensee MDPI, Basel, Switzerland. This article is an open access article distributed under the terms and conditions of the Creative Commons Attribution (CC BY) license (<https://creativecommons.org/licenses/by/4.0/>).

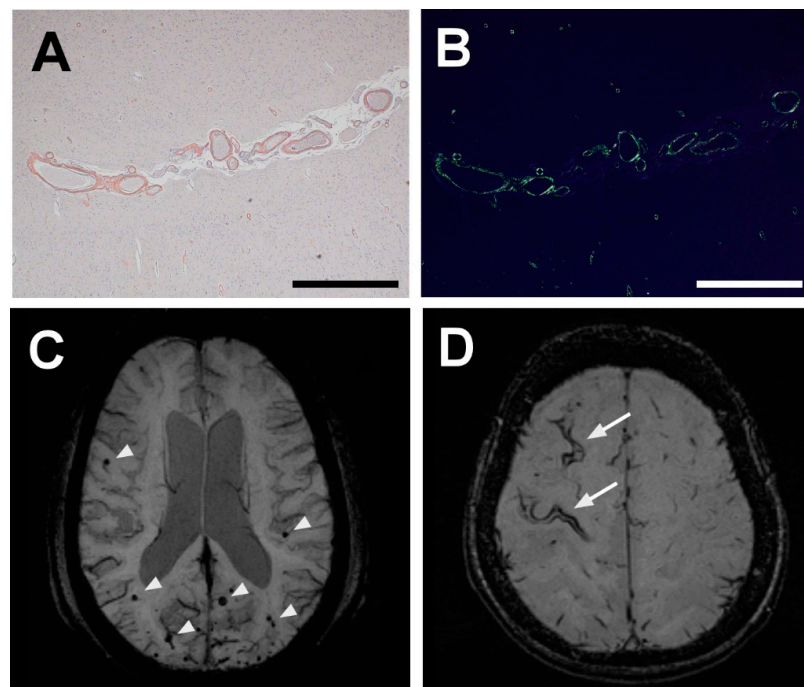
## 1. Introduction

Sporadic cerebral amyloid angiopathy (CAA) is characterized by progressive accumulation of cerebrovascular amyloid  $\beta$  ( $A\beta$ ) in the walls of leptomeningeal arteries and cortical capillaries in the brain. Loss of integrity of cerebral blood vessels caused by cerebrovascular  $A\beta$  deposits has led to spontaneous lobar intracerebral hemorrhage (ICH) and cognitive impairment [1]. Population-based postmortem studies indicated that the prevalence of CAA is 20–40% in elderly people without dementia and 50–60% in elderly people with dementia [2–5]. With regard to ICH, CAA-related ICH accounts for 20% of all types of ICH [6]. We previously investigated the locations of hematomas in very elderly patients ( $\geq 80$  years old) with ICHs and compared them with those of patients with ICHs who were younger than 80 years. We found that hematomas often occurred in the subcortex in very elderly patients with ICH, and a high prevalence of CAA was strongly implicated in ICH occurrence [7]. Furthermore, a recent meta-analysis demonstrated that the annual recurrent ICH risk was higher in patients with CAA-related ICH compared with patients with CAA-unrelated ICH (7.4% vs. 1.1%) [8]. Developing a strategy to treat CAA is urgently needed, but the understanding of its pathogenesis and identification of molecules that may serve as therapeutic targets remain to be elucidated. This review aims to: summarize the clinical, pathological, and radiological features of CAA; describe current

management strategies for CAA; discuss proposed mechanisms of formation of CAA; and clarify the CAA-related molecules that may be therapeutic targets.

## 2. Neuropathology of CAA-Affected Vessels

With regard to pathology, the finding of apple-green birefringence under polarized light after Congo red staining has been widely used to diagnose amyloidosis, including CAA (Figure 1A,B).  $A\beta_{40}$  and  $A\beta_{42}$  are the major forms of  $A\beta$  peptides in the brain. Although  $A\beta_{42}$  differs from  $A\beta_{40}$  by only two hydrophobic residues,  $A\beta_{42}$  is more prone to aggregate compared with  $A\beta_{40}$ , leading to the formation of fibrils more easily [9]. The senile plaque found in Alzheimer's disease (AD) is predominantly composed of  $A\beta_{42}$ , whereas the vascular amyloid in CAA exists as  $A\beta_{40}$  in the walls of leptomeningeal and cortical arteries [9,10]. Vascular  $A\beta$  deposits begin at the outer basement membrane of smooth muscle cells and develop into circumferential transmural  $A\beta$  deposits, thereby leading to degeneration of smooth muscle cells of the media and thickening of the vessel walls [11]. During advanced stages of CAA,  $A\beta$  disrupts the vascular extracellular matrix (ECM), which results in the "double-barrel" appearance because of the detachment and delamination of the intima from the media, microaneurysms, and fibrinoid necrosis [12].



**Figure 1.** Histopathological and radiological imaging of CAA (cerebral amyloid angiopathy). Representative histopathological images from a patient with severe CAA. Congo red-positive leptomeningeal arteries (A) and those same arteries viewed under polarized light (B). SWI (susceptibility-weighted imaging) MRI shows a strictly lobar distribution of lobar microbleeds (arrowheads) (C). SWI shows cSS (cortical superficial siderosis) as hypointense curvilinear signals along the cortical gyri (arrows) (D). Scale bars = 1 mm.

## 3. Diagnosis of CAA: Markers, Characteristic Features, and Techniques

Advances in neuroimaging have enabled us to establish a clinical diagnosis of CAA without requiring a brain biopsy. Recently, the Edinburgh criteria for CAA-related ICH were published. In addition to including the well-known lobar location of CAA-related ICH, these criteria included a subarachnoid space extension of ICH and finger-like projections with an irregular hematoma shape, as well as the presence of the apolipoprotein E (ApoE)  $\epsilon 4$  genotype *APOE- $\epsilon 4$*  [13].

Cerebral microbleeds (CMBs) are a diagnostic marker of the modified Boston criteria (Table 1) [14]. CMBs reflect focal hemosiderin deposits caused by previous subtle hem-

orrhages from small vessels and suggest the potential role of lobar CMBs as markers of CAA [15,16] (Figure 1C). A community-based study demonstrated that the prevalence of lobar CMBs was 19% among healthy elderly subjects, and a strictly lobar distribution was found in 58.4% of those cases [17]. Such a strictly lobar CMB distribution was strongly predictive of CAA in a memory clinic-based cohort, with a positive predictive value of 87.5%, which indicated that lobar CMBs may be a sensitive CAA marker in patients with cognitive impairment [18].

**Table 1.** Modified Boston criteria for CAA diagnosis.

Diagnosis	Description
<b>Definite CAA</b>	Full postmortem examination demonstrating: <ul style="list-style-type: none"> <li>■ Lobar, cortical, or corticosubcortical hemorrhage</li> <li>■ Severe CAA with vasculopathy</li> <li>■ Absence of another diagnostic lesion</li> </ul>
<b>Probable CAA with supporting pathology</b>	Clinical data and pathological tissue (evacuated hematoma or cortical biopsy) demonstrating: <ul style="list-style-type: none"> <li>■ Lobar, cortical, or corticosubcortical hemorrhage</li> <li>■ Some degree of CAA in specimen</li> <li>■ Absence of another diagnostic lesion</li> </ul>
<b>Probable CAA</b>	Clinical data and MRI or CT demonstrating: <ul style="list-style-type: none"> <li>■ Multiple hemorrhages restricted to lobar, cortical, or corticosubcortical regions (cerebellar hemorrhage allowed) OR A single lobar, cortical, or corticosubcortical hemorrhage and focal or disseminated * superficial siderosis</li> <li>■ Age <math>\geq</math> 55 years</li> <li>■ Absence of other cause of hemorrhage or superficial siderosis</li> </ul>
<b>Possible CAA</b>	Clinical data and MRI or CT demonstrating: <ul style="list-style-type: none"> <li>■ Single lobar, cortical, or corticosubcortical hemorrhage OR Focal or disseminated * superficial siderosis</li> <li>■ Age <math>\geq</math> 55 years</li> <li>■ Absence of other cause of hemorrhage or superficial siderosis</li> </ul>

\* Focal superficial siderosis: siderosis restricted to three or fewer sulci; disseminated superficial siderosis: siderosis affecting at least four sulci. CT, computed tomography.

Cortical superficial siderosis (cSS) is another important diagnostic marker included in the modified Boston criteria (Figure 1D) [14]. cSS is thought to result from repeated leakage of blood from fragile CAA-affected vessels into the subarachnoid space; it manifests as hemosiderin deposits in the cortical sulcus. Blood-sensitive magnetic resonance imaging (MRI) sequences, including T2\*-weighted gradient-echo and susceptibility-weighted imaging (SWI) sequences, demonstrate cSS as track-like curvilinear hypointense lesions on the cortical surface. The prevalence of cSS was 0.4% in population-based studies and was 2.7–3.5% in memory clinic settings [19,20]. We previously analyzed the association between cSS and the topographic distribution of CMBs at our memory clinic by using MRI (3T SWI), and we found that cSS was associated with a strictly lobar CMB location, which indicated a close relationship between CAA and cSS [20]. A meta-analysis showed that the ICH incidence per year was 11.1% in the presence of cSS and 3.9% without cSS [21]. In a CAA cohort, disseminated cSS was more frequently observed in patients with ICH than in patients without ICH (33.3% vs. 5.9%) and was associated with the *APOE-ε2* genotype [22].

In clinical settings, cSS has been associated with transient focal neurological episodes (TFNEs), an increased risk of recurrent ICH, and new-onset dementia after ICH [23,24]. TFNEs are short stereotyped episodes of somatosensory or motor disturbance, dysphasia, and visual loss, and symptoms easily migrate from one body part to another. TFNEs seem to be triggered by cSS, and one plausible mechanism of TFNEs may be cortical spreading depression. Fifty percent of patients with TFNEs had symptomatic lobar ICHs over a median period of 14 months [25]. Therefore, recognition of TFNEs and differentiation from transient ischemic attacks are essential in clinical practice, because prescription of anti-thrombotics may lead to fatal ICHs. Other non-hemorrhagic markers, such as MRI-visible perivascular spaces at the centrum semiovale, are associated with CAA [26] and with the number of lobar microbleeds and cSS [27]. The centrum semiovale may reflect the failure of perivascular interstitial fluid drainage caused by vascular A $\beta$  deposits, described in the next section, thus indicating impairment in the A $\beta$  clearance system [26].

White matter hyperintensity (WMH) is also a common radiological finding in CAA. WMH manifests as bilateral and symmetrical high-intensity lesions on T2-weighted images or fluid-attenuated inversion recovery images [28]. Subcortical WMH [29] and posterior predominant WMH are frequently observed in CAA [30,31]. The pathophysiology of WMH in CAA is related to hypoperfusion associated with A $\beta$  deposits in cortical small vessels, blood–brain barrier (BBB) disruption, loss of integrity of the cerebrovasculature, and capillary leakage from the increase in vascular permeability [1,32,33]. Increased WMH predicts a higher risk of recurrent lobar ICH in CAA, a larger hematoma volume, and hematoma enlargement [32,34].

CAA-related inflammation (CAA-ri) manifests as reversible encephalopathy and has a favorable response to immunosuppressant treatment [35]. Clinically, CAA-ri presents with progressive cognitive impairment, headache, seizures, and decreased consciousness [36,37]. Pathological analysis has revealed perivascular, intramural, and/or transmural inflammatory changes, with or without granuloma formation. Typical CAA-ri MRI images show asymmetric WMH distributed across all lobes and without preferential locations and multiple CMBs [35]. These radiological manifestations were incorporated into the diagnostic criteria of CAA-ri [36].

Cerebral microinfarcts are acute or subacute ischemic infarctions observed in patients with advanced CAA [38], in whom occlusive arteriopathy may be related to ischemic changes [1]. Cerebral microinfarcts manifest as small ovoid or round high intensity areas in the subcortex and cortex on diffusion-weighted MRI [38]. Analyses of autopsied brains with CAA cases have identified diffusion-weighted imaging-positive lesions that represent acute infarcts [39].

A previous study demonstrated that CAA is associated with thinner cortices in patients with sporadic CAA compared with healthy controls. Cortical atrophy was also observed, especially in the occipital, temporal, posterior parietal, and medial frontal regions [40].

Amyloid positron emission tomography (PET) with a radiotracer (<sup>11</sup>C-labeled Pittsburgh compound B (PiB) or <sup>18</sup>F-florbetapir) has been reported as a promising imaging method to detect A $\beta$  deposits [41]. Another study demonstrated that ICH or CMBs occurred at locations with greater PiB retention, which suggests the occurrence of increased vascular A $\beta$  deposits and fragile vessels [42]. These radiotracers bind to both the vessels and the brain parenchyma [43], so differentiating vascular A $\beta$  deposits in CAA from senile plaques in AD in PET images requires additional research.

As a fluid matrix with potential biomarkers, cerebrospinal fluid (CSF) may be useful in the diagnosis of CAA. Reduced levels of both A $\beta$ <sub>40</sub> and A $\beta$ <sub>42</sub> in the CSF were observed in patients with CAA [44,45]. Reduced levels of A $\beta$ <sub>40</sub> and A $\beta$ <sub>42</sub> in the CSF were also found in patients with cSS [46]. Amyloid PET with the radiotracer PiB was shown to reveal vascular A $\beta$  and to correlate with a reduced A $\beta$ <sub>40</sub> level in the CSF [47], which suggests that the CSF is a promising tool for early diagnosis and monitoring of disease progression even in the preclinical phase of CAA.

#### 4. Management of CAA, Af, and ICH in Clinical Settings

Several risk factors for CAA were suggested to promote CAA in animal studies. A bilateral common carotid artery stenosis model was utilized to induce chronic cerebral hypoperfusion, which promoted CAA pathology in CAA mouse models [48]. The induction of hypertension by administering angiotensin II also resulted in enhancement of CAA [49]. With regard to diabetes mellitus, chronic diabetes generated by cross-breeding with genetically obese *ob/ob* mice worsened CAA pathology [50]. Lifestyle modifications may thus delay the onset of CAA or prevent the progression of this disease.

A clinical dilemma exists with regard to the use of anticoagulants in patients with CAA who have atrial fibrillation (Af). The standard approach for patients with CAA who have a previous history of lobar ICH is to avoid antithrombotic therapy [51], which increases the relative risk of ICH and outweighs the reduced risk of thrombotic events. Although indications exist for the use of anticoagulants in patients with Af, the use of these agents to prevent CAA-related ICH seems to be more harmful than productive of good outcomes. A meta-analysis that included 5306 patients with anticoagulation-associated ICH demonstrated that restarting anticoagulation lowered the risk of thromboembolic events and did not increase the risk of recurrent ICH [52]. Other studies showed that restarting anticoagulants in patients with a previous ICH and Af reduced overall mortality [53,54]. However, these retrospective studies included patients with both CAA-related ICH and non-CAA-related ICH. Therefore, applying these results to clinical practice is difficult. Using anticoagulants for patients with CAA and a history of CAA-related ICH is not currently indicated [55]. Patients who had TFNE or cSS have also been treated similarly to patients with CAA-related ICH [56]. Alternative preventive approaches that are in current use include administration of direct oral anticoagulant (DOAC) and utilization of a device to occlude the left atrial appendage; these methods may be effective for patients with CAA and Af and a history of CAA-related ICH [55]. Prospective randomized trials of DOAC use in patients with CAA are warranted to answer this important question.

Once ICH occurs, the decision to choose conservative treatments (i.e., anti-edema and anti-hypertensive treatments) versus surgical treatment is a matter of debate. Retrospective data have shown that surgical clot evacuation in patients with CAA-related ICH results in a poor outcome according to the following factors: dementia, age older than 75 years, hematoma volume and location, preoperative Glasgow Coma Scale Score 8 or lower, and intraventricular extension of the hemorrhage [57]. Here, too, prospective randomized clinical trials are needed to identify suitable treatments of CAA-related ICH.

#### 5. Promising Therapeutic Targets for CAA

Although effective prevention of CAA-related ICHs or cognitive impairment is currently unavailable, several promising approaches may aid A $\beta$  clearance and lead to CAA treatment. A $\beta$  clearance depends mainly on three mechanisms: (1) A $\beta$ -degrading enzymes, (2) vascular receptor-mediated clearance, and (3) the perivascular drainage pathway. First, enzymatic degradation of A $\beta$  such as by neprilysin and insulin-degrading enzyme (IDE) plays an important role in A $\beta$  clearance and reduces A $\beta$  cytotoxicity. Neprilysin, identified as an A $\beta$ -degrading enzyme, is a neural endopeptidase that cleaves A $\beta$  in a proteolytic manner [58,59]. A recent study found a significant decrease in neprilysin levels in microvessel-enriched extracts from patients with AD [60]. Therefore, and in view of neprilysin's reduction of brain A $\beta$  levels in mice [61], genetic therapy to enhance neprilysin expression in the brain vasculature may be useful in CAA treatment. Another known A $\beta$ -degrading enzyme, IDE, is also an endopeptidase that is predominantly expressed in the brain [62,63]. In addition to its insulin-degrading effects, IDE degrades A $\beta$  and promotes A $\beta$  removal, as in vivo studies found [64,65]. Furthermore, an in vitro study found that IDE was the major protease involved in A $\beta$  clearance in human hippocampal lysates [66].

We recently determined that memantine, a known NMDA receptor (NMDAR) antagonist, was a promising therapy for CAA via reducing the numbers of vessels with A $\beta$

deposits and the numbers of hemosiderin deposits in the APP23 transgenic mouse model of CAA [67]. We also found that APP23 mice manifested reduced cerebrovascular expression of IDE compared with wild-type mice and that memantine increased cerebrovascular IDE expression in APP23 mice. Past studies determined that activation of the NMDAR by treating neuronal cell cultures with NMDA led to significantly reduced IDE levels and that an NMDAR antagonist (MK801) increased IDE expression [68]. We hypothesized that reduced IDE levels are mediated by activation of the NMDAR by A $\beta$  and, conversely, that increased IDE expression may be associated with blockage of the NMDAR by memantine. As for A $\beta$  clearance in pathogenesis of AD, involvement of the ubiquitin-proteasome system (UPS) through its proteolytic activity was reported [69]. Further studies were warranted to identify the role of UPS in pathogenesis of CAA.

Second, with regard to the vascular receptor-mediated clearance pathway, emerging *in vitro* and *in vivo* evidence demonstrates that low-density lipoprotein receptor-related protein-1 (LRP1) is associated with clearance of A $\beta$  from the brain. LRP1 is highly expressed in cerebrovascular walls and mediates the efflux of A $\beta$  into the bloodstream. Kanekiyo et al. demonstrated that conditional knockout of LRP1 in vascular smooth muscle cells in APP/PS1 mice increased cerebrovascular A $\beta$  deposits, and conditional knockout of LRP1 in neuronal cells in the brains of APP/PS1 mice resulted in impaired interstitial A $\beta$  clearance in the cortex without affecting the A $\beta$ -processing pathway [70,71]. Diet-based treatment with oleocanthal, a phenolic secoiridoid component of extra virgin olive oil, demonstrated enhanced LRP1 expression at the BBB, which led to improved A $\beta$  clearance in mice [72,73].

The third mechanism, the perivascular drainage pathway, was thought to be an A $\beta$  clearance route, and cerebrovascular A $\beta$  deposits were believed to result from the failure of clearance of A $\beta$  from the brain [74,75]. This mechanism was initially associated with anti-A $\beta$  immunotherapy, which failed to demonstrate clinical efficacy in patients with AD. The worsening of CAA was believed to occur because of A $\beta$  overload in perivascular drainage pathways via A $\beta$  efflux from the brain caused by immunotherapy [76]. This route was described as an intramural periarterial drainage (IPAD) pathway, in which neuronal A $\beta$  enters the perivascular drainage pathway along the basement membrane of the vascular smooth muscle cells and finally drains into the cervical lymph nodes [77–79]. Past ultrastructural studies of CAA have demonstrated that deposits of A $\beta$  fibrils first appeared in the basement membrane of cerebral blood vessels [11], which indicated the failure of the IPAD pathway, because the patterns of the A $\beta$  deposits were consistent with the IPAD pathway [80]. Furthermore, perivascular drainage of interstitial fluid depends on vessel pulsations as the motive force, and age-related functional decline (e.g., stiffening of the arteries) was hypothesized to reduce drainage flow. Certain studies proposed that vasoactive drugs promoted A $\beta$  clearance by means of perivascular drainage-mediated A $\beta$  clearance as a result of the motive force generated by arterial pulsations [81,82].

An alternative perivascular drainage pathway has been proposed in which the CSF enters the paravascular spaces and penetrates the arterial walls in the brain, mixes with interstitial fluid and solutes in the parenchyma, and removes waste products by transporting them into the paravascular spaces of the draining veins via CSF bulk flow [79]. This pathway was named the glymphatic drainage pathway, and the water channel aquaporin-4 located in the foot processes of astrocytes regulates the convective flow of fluid in the pathway [83,84]. Animal studies showed that genetic deletion of aquaporin-4 reduced the clearance of tracer and the levels of aquaporin-4 in astrocytic endfeet in CAA, which indicates the impairment of glymphatic clearance and subsequent reduction in A $\beta$  clearance [85,86]. Although independent pathways of IPAD and glymphatic drainage coexist in relation to CSF movements, additional studies are needed to investigate which pathway is more relevant in the pathogenesis of CAA.

With regard to promising candidate therapeutics for CAA, cilostazol, a known selective inhibitor of type 3 phosphodiesterase, reduced A $\beta$ <sub>40</sub> deposits and improved cognitive impairment in CAA model mice. The distance that fluorescent A $\beta$  tracers moved during a

certain time period was significantly greater in the cilostazol-treated group than in controls, which indicated that vasoactive drugs could promote A $\beta$  clearance [87]. Another promising therapeutic agent, taxifolin, was suggested to block A $\beta$  oligomer formation, maintain vascular integrity, and prevent cognitive impairment in CAA model mice [88]. With regard to CAA-related ICHs, minocycline treatment reduced the numbers of microhemorrhages in the brains of CAA transgenic mice [89]. Drug repositioning to identify novel treatment indications from old drugs might be a promising strategy to benefit CAA patients.

With respect to prevention, a sub-analysis of the PROGRESS study demonstrated that lowering blood pressure with perindopril reduced the recurrence of CAA-related ICHs by 77% during a follow-up period of 3.9 years, which supports the efficacy of strict blood pressure control to manage CAA [90].

## 6. Key Molecules in CAA Identified by Means of Proteomic Analyses

Although developing a therapeutic strategy to ameliorate CAA is urgently needed, molecules or physiological processes involved in the pathogenesis of CAA remain to be elucidated. Recently, proteomic analysis of human brain samples has garnered increasing interest in CAA as a means to identify key molecules that may lead to treatment, and upregulated molecules have been identified as novel potential therapeutic targets for CAA. We used laser capture microdissection to isolate human vascular material from CAA-affected leptomeningeal and cortical arteries from formalin-fixed paraffin-embedded (FFPE) samples obtained at autopsy [91]. Quantitative liquid chromatography-tandem mass spectrometry demonstrated upregulation of ApoE, clusterin, and sushi repeat-containing protein X-linked 1 (SRPX1) in CAA-affected vessels.

Of these upregulated molecules, we focused on SRPX1 and undertook a neuropathological study. SRPX1, a transmembrane protein consisting of 464 amino acids, has three sushi domains, which are found in various complement and adhesion proteins; it also has a short intracellular domain in the C-terminal region [92–94]. *SRPX1* was first identified as a causative gene in patients with X-linked retinitis pigmentosa [95]. *SRPX1* mRNA expression was downregulated in tumor cells, and the gene was believed to be a tumor suppressor gene [93,94,96]. We found that SRPX1 co-accumulated with vascular A $\beta$  deposits, and its occurrence increased with CAA severity. SRPX1 mRNA and protein levels also increased in primary cultures of cerebrovascular smooth muscle cells treated with A $\beta$ <sub>40</sub>. In addition, we discovered that SRPX1 bound to A $\beta$  in vitro and enhanced A $\beta$ -induced caspase activities in cultured cells, which led to A $\beta$ -induced cerebrovascular degeneration in CAA.

Endo et al. performed proteomic analyses of microdissected specimens of leptomeningeal and cortical vessels from surgical FFPE samples of lobar ICHs, and they identified ApoE and clusterin as upregulated molecules and investigated their roles in relation to A $\beta$  aggregation [97]. They also used a unique in vitro CAA model of the IPAD pathway and found that ApoE and clusterin delayed the start of amyloid fibril formation [97,98].

Manousopoulou et al. used human leptomeningeal arteries isolated from frozen autopsy samples of severe capillary CAA and detected tissue inhibitor of metalloproteinases 3 (TIMP3) and clusterin as upregulated proteins compared with non-CAA age-matched controls [99]. Hondius et al. used microdissected human gray matter samples from frozen autopsy samples of CAA-affected capillaries and compared these samples with those without CAA. They identified HTRA1 (HtrA serine peptidase 1) as a CAA-specific molecule that accumulated in the vessels. They observed HTRA1 in all the CAA cases, only one AD case, and no control case [100]. Although each study utilized different target blood vessels in CAA and different specimen types (FFPE or frozen brain samples), data from all these studies taken together may provide resources for generating novel therapeutic targets for CAA. Of the upregulated molecules described above, ApoE and clusterin were commonly noted. *APOE* is the confirmed susceptibility locus for CAA identified in genetic analyses [101,102]. Proposed mechanisms of ApoE isoform-specific effects are direct com-

petition for A $\beta$  clearance [103] and effects on peptide aggregation or fibrillogenesis [104]. Of the three APOE genotypes ( $\epsilon$ 2,  $\epsilon$ 3, and  $\epsilon$ 4), the APOE- $\epsilon$ 4 genotype is a major risk factor for both AD [105] and CAA [106], and ApoE- $\epsilon$ 2/ $\epsilon$ 4 genotype carriers are prone to develop CAA at an early age [107]. CAA is classified into two subtypes: the first is CAA type 1, or capillary CAA, which is characterized by A $\beta$  deposits in the capillaries regardless of the involvement of larger vessels. The second, CAA type 2, is characterized by A $\beta$  deposits in the leptomeningeal and cortical arteries [108,109]. CAA type 1 leads to capillary occlusion and impaired vascular perfusion and then to dementia [110]. CAA type 1 is also associated with the APOE- $\epsilon$ 4 genotype [108,111], whereas the APOE- $\epsilon$ 2 genotype is associated with CAA type 2 [111,112]. Strictly lobar CMBs are also associated with the APOE- $\epsilon$ 4 genotype [17,113,114], whereas the APOE- $\epsilon$ 2 genotype is associated with cSS [22], CAA-related ICH [106], and larger hematoma volume [115]. Inasmuch as the APOE- $\epsilon$ 2 genotype is also associated with fibrinoid necrosis in CAA [116,117], possession of the APOE- $\epsilon$ 2 genotype may be related to the loss of structural integrity of the cerebrovasculature.

Immunohistochemical studies demonstrated co-localization of A $\beta$  and ApoE in the perivascular spaces, which indicated the involvement of ApoE in the perivascular drainage pathway. Although in vitro analyses showed inconsistent effects of ApoE on A $\beta$  fibril formation [118,119], a study with the CAA/AD mouse model that had a genetic deletion of murine ApoE revealed few vascular and parenchymal A $\beta$  deposits, which indicated enhancement of A $\beta$  plaque formation by ApoE [120]. ApoE-dependent reduction of A $\beta$  deposits was also seen in the CAA/AD mouse expressing human ApoE [121].

Clusterin, also known as apolipoprotein J, is a ubiquitously expressed protein present in a wide range of tissues [122]. It is a 70–80kDa highly glycosylated protein that is cleaved to form  $\alpha$ - and  $\beta$ -subunits linked together by disulfide bonds [123]. Clusterin is involved in a number of cellular processes as an extracellular chaperone, as well as in cell survival and cell death pathways [124]. Clusterin also binds to A $\beta$  oligomers and inhibits A $\beta$  aggregation and amyloid fibril formation [125]. In addition, clusterin mediates its A $\beta$  clearance across the BBB via lipoprotein-related protein-2 (LRP2, known as megalin) [126,127]. A recent study demonstrated worsened CAA in clusterin-knockout mice, and the loss of clusterin likely reduced A $\beta$  clearance across the BBB and shifted the clearance pathway toward perivascular drainage routes [128].

TIMP3 is a 25 kDa protein containing disulfide bonds that is found in the central nervous system [129]; it is also an endogenous tissue inhibitor involved in ECM homeostasis by inhibiting matrix metalloproteinase 9 activity [130,131]. Genetic deletion of TIMP3 resulted in pathological arterial vasodilation in mice [131]. The results in that study showed that expression of TIMP3 was restricted to the walls of leptomeningeal arteries, which indicated a role of TIMP3 in preserving cerebrovascular integrity by ensuring a balance with the activities of matrix metalloproteinases [99].

HTRA1, a member of the serine protease family, cleaved ECM proteins such as collagen and fibronectin [132]. HTRA1 also degraded A $\beta$  in vitro and co-localized with parenchymal and perivascular A $\beta$  deposits [133]. In addition, mutations in HTRA1 were identified as a cause of the hereditary small vessel disease CARASIL (cerebral autosomal recessive arteriopathy with subcortical infarcts and leukoencephalopathy) [134]. Upregulated TIMP3 or HTRA1 levels in CAA-affected blood vessels may reflect vascular ECM remodeling as a compensatory reaction to vascular A $\beta$  accumulation.

## 7. Future Perspectives

CAA presents in two ways: neurodegenerative disease and cerebrovascular disease, and A $\beta$  deposits in vessel walls can result in ICH, ischemic stroke, and dementia. However, the molecular pathways that directly influence the progression of CAA have not yet been clarified. The molecules that have been identified by the proteomic analyses described above may be key target molecules in CAA and may be applied in future studies to determine the involvement of those molecules in the pathogenesis of CAA. Chemical compounds or genetic therapy to enhance expression of target molecules in brain vasculature may be



effective in CAA treatment. Furthermore, determination of the chronological alterations in molecules throughout the progression of this disease is important to understand the pathogenesis of CAA. Early accurate diagnosis of CAA is quite important for the utilization of early preventive and disease-modifying treatments. Therefore, continued research to discover fluid or radiological biomarkers that allow early diagnosis of CAA will also be needed to develop those treatments. Reductions in the incidence of ICH and dementia resulting from CAA will decrease the emotional distress and physical impairment of all patients and their caregivers and will foster improved medical care around the world.

**Funding:** This research was supported by Grants-in-Aid for Young Scientists (19K16919) from the Japan Society for the Promotion of Science (JSPS), the Promotion of Joint International Research (Fostering Joint International Research (A)) (19KK0410) from the JSPS, the Japan Foundation of Applied Enzymology, Kanae Foundation for Life & Socio-Medical Science, The Uehara Memorial Foundation, Kobayashi Magobe Memorial Medical Foundation, Takeda Science Foundation, Daiwa Health Foundation, The Osaka Medical Research Foundation for Intractable Diseases, Mochida Memorial Foundation for Medical and Pharmaceutical Research, and SENSHIN Medical Research Foundation.

**Institutional Review Board Statement:** Not applicable.

**Informed Consent Statement:** Not applicable.

**Data Availability Statement:** Not applicable.

**Acknowledgments:** We are indebted to Judith B. Gandy for providing professional English editing of the manuscript.

**Conflicts of Interest:** The authors declare no conflict of interest.

## Abbreviations

CAA	Cerebral amyloid angiopathy
ICH	Intracerebral hemorrhage
AD	Alzheimer's disease
A $\beta$	Amyloid $\beta$
TFNEs	Transient focal neurological events
WMH	White matter hyperintensity
CAA-ri	CAA-related inflammation
PiB	<sup>11</sup> C-labeled Pittsburgh compound B
PET	Positron emission tomography
AF	Atrial fibrillation
IPAD	Intramural periarterial drainage
CSF	Cerebrospinal fluid
SRPX1	Sushi repeat-containing protein X-linked 1
TIMP3	Tissue inhibitor of metalloproteinases 3
HTRA1	HtrA serine peptidase 1
LRP-1	Low-density lipoprotein receptor-related protein 1
ApoE	Apolipoprotein E
IDE	Insulin-degrading enzyme
BBB	Blood-brain barrier
ECM	Extracellular matrix
CMBs	Cerebral microbleeds
cSS	Cortical superficial siderosis
MRI	Magnetic resonance imaging
SWI	Susceptibility-weighted imaging
NMDAR	NMDA receptor
UPS	Ubiquitin-proteasome system

## References

1. Viswanathan, A.; Greenberg, S.M. Cerebral amyloid angiopathy in the elderly. *Ann. Neurol.* **2011**, *70*, 871–880. [[CrossRef](#)] [[PubMed](#)]
2. Keage, H.A.; Carare, R.O.; Friedland, R.P.; Ince, P.G.; Love, S.; Nicoll, J.A.; Wharton, S.B.; Weller, R.O.; Brayne, C. Population studies of sporadic cerebral amyloid angiopathy and dementia: A systematic review. *BMC Neurol.* **2009**, *9*, 3. [[CrossRef](#)]
3. Xuereb, J.H.; Brayne, C.; Dufouil, C.; Gertz, H.; Wischik, C.; Harrington, C.; Mukaetova-Ladinska, E.; McGee, M.A.; O'Sullivan, A.; O'Connor, D.; et al. Neuropathological findings in the very old. Results from the first 101 brains of a population-based longitudinal study of dementing disorders. *Ann. N. Y. Acad. Sci.* **2000**, *903*, 490–496. [[CrossRef](#)]
4. Neuropathology Group: Medical Research Council Cognitive Function and Aging Study. Pathological correlates of late-onset dementia in a multicentre, community-based population in England and Wales. Neuropathology Group of the Medical Research Council Cognitive Function and Ageing Study (MRC CFAS). *Lancet* **2001**, *357*, 169–175. [[CrossRef](#)]
5. Tanskanen, M.; Lindsberg, P.J.; Tienari, P.J.; Polvikoski, T.; Sulkava, R.; Verkkoniemi, A.; Rastas, S.; Paetau, A.; Kiuru-Enari, S. Cerebral amyloid angiopathy in a 95+ cohort: Complement activation and apolipoprotein E (ApoE) genotype. *Neuropathol. Appl. Neurobiol.* **2005**, *31*, 589–599. [[CrossRef](#)] [[PubMed](#)]
6. Meretoja, A.; Strbian, D.; Putaala, J.; Curtze, S.; Haapaniemi, E.; Mustanoja, S.; Sairanen, T.; Satopää, J.; Silvennoinen, H.; Niemelä, M.; et al. SMASH-U: A proposal for etiologic classification of intracerebral hemorrhage. *Stroke* **2012**, *43*, 2592–2597. [[CrossRef](#)]
7. Inoue, Y.; Miyashita, F.; Minematsu, K.; Toyoda, K. Clinical characteristics and outcomes of intracerebral hemorrhage in very elderly. *J. Stroke Cerebrovasc. Dis.* **2018**, *27*, 97–102. [[CrossRef](#)]
8. Charidimou, A.; Imaizumi, T.; Moulin, S.; Biffi, A.; Samarasekera, N.; Yakushiji, Y.; Peeters, A.; Vandermeeren, Y.; Laloux, P.; Baron, J.C.; et al. Brain hemorrhage recurrence, small vessel disease type, and cerebral microbleeds: A meta-analysis. *Neurology* **2017**, *89*, 820–829. [[CrossRef](#)]
9. Gravina, S.A.; Ho, L.; Eckman, C.B.; Long, K.E.; Otvos, L., Jr.; Younkin, L.H.; Suzuki, N.; Younkin, S.G. Amyloid  $\beta$  protein (A $\beta$ ) in Alzheimer's disease brain. Biochemical and immunocytochemical analysis with antibodies specific for forms ending at A $\beta$ 40 or A $\beta$ 42(43). *J. Biol. Chem.* **1995**, *270*, 7013–7016. [[CrossRef](#)]
10. Miller, D.L.; Papayannopoulos, I.A.; Styles, J.; Bobin, S.A.; Lin, Y.Y.; Biemann, K.; Iqbal, K. Peptide compositions of the cerebrovascular and senile plaque core amyloid deposits of Alzheimer's disease. *Arch. Biochem. Biophys.* **1993**, *301*, 41–52. [[CrossRef](#)]
11. Yamaguchi, H.; Yamazaki, T.; Lemere, C.A.; Frosch, M.P.; Selkoe, D.J. Beta amyloid is focally deposited within the outer basement membrane in the amyloid angiopathy of Alzheimer's disease. An immunoelectron microscopic study. *Am. J. Pathol.* **1992**, *141*, 249–259. [[PubMed](#)]
12. Gilbert, J.J.; Vinters, H.V. Cerebral amyloid angiopathy: Incidence and complications in the aging brain. I. Cerebral hemorrhage. *Stroke* **1983**, *14*, 915–923. [[CrossRef](#)]
13. Rodrigues, M.A.; Samarasekera, N.; Lerpiniere, C.; Humphreys, C.; McCarron, M.O.; White, P.M.; Nicoll, J.A.R.; Sudlow, C.L.M.; Cordonnier, C.; Wardlaw, J.M.; et al. The Edinburgh CT and genetic diagnostic criteria for lobar intracerebral haemorrhage associated with cerebral amyloid angiopathy: Model development and diagnostic test accuracy study. *Lancet Neurol.* **2018**, *17*, 232–240. [[CrossRef](#)]
14. Linn, J.; Halpin, A.; Demaerel, P.; Ruhland, J.; Giese, A.D.; Dichgans, M.; van Buchem, M.A.; Bruckmann, H.; Greenberg, S.M. Prevalence of superficial siderosis in patients with cerebral amyloid angiopathy. *Neurology* **2010**, *74*, 1346–1350. [[CrossRef](#)] [[PubMed](#)]
15. Fazekas, F.; Kleinert, R.; Roob, G.; Kleinert, G.; Kapeller, P.; Schmidt, R.; Hartung, H.P. Histopathologic analysis of foci of signal loss on gradient-echo T2\*-weighted MR images in patients with spontaneous intracerebral hemorrhage: Evidence of microangiopathy-related microbleeds. *AJNR Am. J. Neuroradiol.* **1999**, *20*, 637–642. [[PubMed](#)]
16. Cordonnier, C.; Al-Shahi Salman, R.; Wardlaw, J. Spontaneous brain microbleeds: Systematic review, subgroup analyses and standards for study design and reporting. *Brain* **2007**, *130*, 1988–2003. [[CrossRef](#)]
17. Vernooij, M.W.; van der Lugt, A.; Ikram, M.A.; Wielopolski, P.A.; Niessen, W.J.; Hofman, A.; Krestin, G.P.; Breteler, M.M. Prevalence and risk factors of cerebral microbleeds: The Rotterdam Scan Study. *Neurology* **2008**, *70*, 1208–1214. [[CrossRef](#)]
18. Martinez-Ramirez, S.; Romero, J.R.; Shoamanesh, A.; McKee, A.C.; Van Etten, E.; Pontes-Neto, O.; Macklin, E.A.; Ayres, A.; Auriel, E.; Himali, J.J.; et al. Diagnostic value of lobar microbleeds in individuals without intracerebral hemorrhage. *Alzheimers Dement.* **2015**, *11*, 1480–1488. [[CrossRef](#)] [[PubMed](#)]
19. Shams, S.; Martola, J.; Charidimou, A.; Cavallin, L.; Granberg, T.; Shams, M.; Forslin, Y.; Aspelin, P.; Kristoffersen-Wiberg, M.; Wahlund, L.O. Cortical superficial siderosis: Prevalence and biomarker profile in a memory clinic population. *Neurology* **2016**, *87*, 1110–1117. [[CrossRef](#)]
20. Inoue, Y.; Nakajima, M.; Uetani, H.; Hirai, T.; Ueda, M.; Kitajima, M.; Utsunomiya, D.; Watanabe, M.; Hashimoto, M.; Ikeda, M.; et al. Diagnostic significance of cortical superficial siderosis for Alzheimer disease in patients with cognitive impairment. *AJNR Am. J. Neuroradiol.* **2016**, *37*, 223–227. [[CrossRef](#)]
21. Charidimou, A.; Boulouis, G.; Greenberg, S.M.; Viswanathan, A. Cortical superficial siderosis and bleeding risk in cerebral amyloid angiopathy: A meta-analysis. *Neurology* **2019**, *93*, e2192–e2202. [[CrossRef](#)] [[PubMed](#)]

22. Charidimou, A.; Martinez-Ramirez, S.; Shoamanesh, A.; Oliveira-Filho, J.; Frosch, M.; Vashkevich, A.; Ayres, A.; Rosand, J.; Gurol, M.E.; Greenberg, S.M.; et al. Cerebral amyloid angiopathy with and without hemorrhage: Evidence for different disease phenotypes. *Neurology* **2015**, *84*, 1206–1212. [[CrossRef](#)]
23. Charidimou, A.; Linn, J.; Vernooij, M.W.; Opherk, C.; Akoudad, S.; Baron, J.C.; Greenberg, S.M.; Jäger, H.R.; Werring, D.J. Cortical superficial siderosis: Detection and clinical significance in cerebral amyloid angiopathy and related conditions. *Brain* **2015**, *138*, 2126–2139. [[CrossRef](#)]
24. Martínez-Lizana, E.; Carmona-Iragui, M.; Alcolea, D.; Gómez-Choco, M.; Vilaplana, E.; Sánchez-Saudinós, M.B.; Clarimón, J.; Hernández-Guillamón, M.; Munuera, J.; Gelpi, E.; et al. Cerebral amyloid angiopathy-related atraumatic convexal subarachnoid hemorrhage: An ARIA before the tsunami. *J. Cereb. Blood Flow Metab.* **2015**, *35*, 710–717. [[CrossRef](#)] [[PubMed](#)]
25. Charidimou, A.; Peeters, A.; Fox, Z.; Gregoire, S.M.; Vandermeeren, Y.; Laloux, P.; Jäger, H.R.; Baron, J.C.; Werring, D.J. Spectrum of transient focal neurological episodes in cerebral amyloid angiopathy: Multicentre magnetic resonance imaging cohort study and meta-analysis. *Stroke* **2012**, *43*, 2324–2330. [[CrossRef](#)] [[PubMed](#)]
26. Charidimou, A.; Boulouis, G.; Pasi, M.; Auriel, E.; van Etten, E.S.; Haley, K.; Ayres, A.; Schwab, K.M.; Martinez-Ramirez, S.; Goldstein, J.N.; et al. MRI-visible perivascular spaces in cerebral amyloid angiopathy and hypertensive arteriopathy. *Neurology* **2017**, *88*, 1157–1164. [[CrossRef](#)] [[PubMed](#)]
27. Martinez-Ramirez, S.; Pontes-Neto, O.M.; Dumas, A.P.; Auriel, E.; Halpin, A.; Quimby, M.; Gurol, M.E.; Greenberg, S.M.; Viswanathan, A. Topography of dilated perivascular spaces in subjects from a memory clinic cohort. *Neurology* **2013**, *80*, 1551–1556. [[CrossRef](#)]
28. Wardlaw, J.M.; Smith, E.E.; Biessels, G.J.; Cordonnier, C.; Fazekas, F.; Frayne, R.; Lindley, R.I.; O'Brien, J.T.; Barkhof, F.; Benavente, O.R.; et al. Standards for reporting vascular changes on neuroimaging (STRIVE v1). Neuroimaging standards for research into small vessel disease and its contribution to ageing and neurodegeneration. *Lancet Neurol.* **2013**, *12*, 822–838. [[CrossRef](#)]
29. Charidimou, A.; Boulouis, G.; Haley, K.; Auriel, E.; van Etten, E.S.; Fotiadis, P.; Reijmer, Y.; Ayres, A.; Vashkevich, A.; Dipucchio, Z.Y.; et al. White matter hyperintensity patterns in cerebral amyloid angiopathy and hypertensive arteriopathy. *Neurology* **2016**, *86*, 505–511. [[CrossRef](#)]
30. Thanprasertsuk, S.; Martinez-Ramirez, S.; Pontes-Neto, O.M.; Ni, J.; Ayres, A.; Reed, A.; Swords, K.; Gurol, M.E.; Greenberg, S.M.; Viswanathan, A. Posterior white matter disease distribution as a predictor of amyloid angiopathy. *Neurology* **2014**, *83*, 794–800. [[CrossRef](#)]
31. Zhu, Y.C.; Chabriat, H.; Godin, O.; Dufouil, C.; Rosand, J.; Greenberg, S.M.; Smith, E.E.; Tzourio, C.; Viswanathan, A. Distribution of white matter hyperintensity in cerebral hemorrhage and healthy aging. *J. Neurol.* **2012**, *259*, 530–536. [[CrossRef](#)]
32. Lou, M.; Al-Hazzani, A.; Goddeau, R.P., Jr.; Novak, V.; Selim, M. Relationship between white-matter hyperintensities and hematoma volume and growth in patients with intracerebral hemorrhage. *Stroke* **2010**, *41*, 34–40. [[CrossRef](#)]
33. Charidimou, A.; Gang, Q.; Werring, D.J. Sporadic cerebral amyloid angiopathy revisited: Recent insights into pathophysiology and clinical spectrum. *J. Neurol. Neurosurg. Psychiatry* **2012**, *83*, 124–137. [[CrossRef](#)]
34. Smith, E.E.; Gurol, M.E.; Eng, J.A.; Engel, C.R.; Nguyen, T.N.; Rosand, J.; Greenberg, S.M. White matter lesions, cognition, and recurrent hemorrhage in lobar intracerebral hemorrhage. *Neurology* **2004**, *63*, 1606–1612. [[CrossRef](#)] [[PubMed](#)]
35. Kinnecom, C.; Lev, M.H.; Wendell, L.; Smith, E.E.; Rosand, J.; Frosch, M.P.; Greenberg, S.M. Course of cerebral amyloid angiopathy-related inflammation. *Neurology* **2007**, *68*, 1411–1416. [[CrossRef](#)]
36. Auriel, E.; Charidimou, A.; Gurol, M.E.; Ni, J.; Van Etten, E.S.; Martinez-Ramirez, S.; Boulouis, G.; Piazza, F.; DiFrancesco, J.C.; Frosch, M.P.; et al. Validation of clinicoradiological criteria for the diagnosis of cerebral amyloid angiopathy-related inflammation. *JAMA Neurol.* **2016**, *73*, 197–202. [[CrossRef](#)] [[PubMed](#)]
37. Scolding, N.J.; Joseph, F.; Kirby, P.A.; Mazanti, I.; Gray, F.; Mikol, J.; Ellison, D.; Hilton, D.A.; Williams, T.L.; MacKenzie, J.M.; et al. Aβ-related angiitis: Primary angiitis of the central nervous system associated with cerebral amyloid angiopathy. *Brain* **2005**, *128*, 500–515. [[CrossRef](#)] [[PubMed](#)]
38. Kimberly, W.T.; Gilson, A.; Rost, N.S.; Rosand, J.; Viswanathan, A.; Smith, E.E.; Greenberg, S.M. Silent ischemic infarcts are associated with hemorrhage burden in cerebral amyloid angiopathy. *Neurology* **2009**, *72*, 1230–1235. [[CrossRef](#)]
39. Ter Telgte, A.; Scherlek, A.A.; Reijmer, Y.D.; van der Kouwe, A.J.; van Harten, T.; Duering, M.; Bacskai, B.J.; de Leeuw, F.E.; Frosch, M.P.; Greenberg, S.M.; et al. Histopathology of diffusion-weighted imaging-positive lesions in cerebral amyloid angiopathy. *Acta Neuropathol.* **2020**, *139*, 799–812. [[CrossRef](#)]
40. Fotiadis, P.; van Rooden, S.; van der Grond, J.; Schultz, A.; Martinez-Ramirez, S.; Auriel, E.; Reijmer, Y.; van Opstal, A.M.; Ayres, A.; Schwab, K.M.; et al. Cortical atrophy in patients with cerebral amyloid angiopathy: A case-control study. *Lancet Neurol.* **2016**, *15*, 811–819. [[CrossRef](#)]
41. Klunk, W.E.; Engler, H.; Nordberg, A.; Wang, Y.; Blomqvist, G.; Holt, D.P.; Bergström, M.; Savitcheva, I.; Huang, G.F.; Estrada, S.; et al. Imaging brain amyloid in Alzheimer's disease with Pittsburgh Compound-B. *Ann. Neurol.* **2004**, *55*, 306–319. [[CrossRef](#)]
42. Gurol, M.E.; Dierksen, G.; Betensky, R.; Gidicsin, C.; Halpin, A.; Becker, A.; Carmasin, J.; Ayres, A.; Schwab, K.; Viswanathan, A.; et al. Predicting sites of new hemorrhage with amyloid imaging in cerebral amyloid angiopathy. *Neurology* **2012**, *79*, 320–326. [[CrossRef](#)]
43. Farid, K.; Charidimou, A.; Baron, J.C. Amyloid positron emission tomography in sporadic cerebral amyloid angiopathy: A systematic critical update. *Neuroimage Clin.* **2017**, *15*, 247–263. [[CrossRef](#)] [[PubMed](#)]

44. Verbeek, M.M.; Kremer, B.P.; Rikkert, M.O.; Van Domburg, P.H.; Skehan, M.E.; Greenberg, S.M. Cerebrospinal fluid amyloid  $\beta_{40}$  is decreased in cerebral amyloid angiopathy. *Ann. Neurol.* **2009**, *66*, 245–249. [[CrossRef](#)]
45. Renard, D.; Castelnovo, G.; Wacongne, A.; Le Floch, A.; Thouvenot, E.; Mas, J.; Gabelle, A.; Labauge, P.; Lehmann, S. Interest of CSF biomarker analysis in possible cerebral amyloid angiopathy cases defined by the modified Boston criteria. *J. Neurol.* **2012**, *259*, 2429–2433. [[CrossRef](#)] [[PubMed](#)]
46. Renard, D.; Gabelle, A.; Hirtz, C.; Demattei, C.; Thouvenot, E.; Lehmann, S. Cerebrospinal fluid Alzheimer's disease biomarkers in isolated supratentorial cortical superficial siderosis. *J. Alzheimers Dis.* **2016**, *54*, 1291–1295. [[CrossRef](#)]
47. Goos, J.D.; Kester, M.I.; Barkhof, F.; Klein, M.; Blankenstein, M.A.; Scheltens, P.; van der Flier, W.M. Patients with Alzheimer disease with multiple microbleeds: Relation with cerebrospinal fluid biomarkers and cognition. *Stroke* **2009**, *40*, 3455–3460. [[CrossRef](#)] [[PubMed](#)]
48. Okamoto, Y.; Yamamoto, T.; Kalaria, R.N.; Senzaki, H.; Maki, T.; Hase, Y.; Kitamura, A.; Washida, K.; Yamada, M.; Ito, H.; et al. Cerebral hypoperfusion accelerates cerebral amyloid angiopathy and promotes cortical microinfarcts. *Acta Neuropathol.* **2012**, *123*, 381–394. [[CrossRef](#)] [[PubMed](#)]
49. Gentile, M.T.; Poulet, R.; Di Pardo, A.; Cifelli, G.; Maffei, A.; Vecchione, C.; Passarelli, F.; Landolfi, A.; Carullo, P.; Lembo, G.  $\beta$ -Amyloid deposition in brain is enhanced in mouse models of arterial hypertension. *Neurobiol. Aging* **2009**, *30*, 222–228. [[CrossRef](#)] [[PubMed](#)]
50. Takeda, S.; Sato, N.; Uchio-Yamada, K.; Sawada, K.; Kunieda, T.; Takeuchi, D.; Kurinami, H.; Shinohara, M.; Rakugi, H.; Morishita, R. Diabetes-accelerated memory dysfunction via cerebrovascular inflammation and A $\beta$  deposition in an Alzheimer mouse model with diabetes. *Proc. Natl. Acad. Sci. USA* **2010**, *107*, 7036–7041. [[CrossRef](#)] [[PubMed](#)]
51. Eckman, M.H.; Rosand, J.; Knudsen, K.A.; Singer, D.E.; Greenberg, S.M. Can patients be anticoagulated after intracerebral hemorrhage? A decision analysis. *Stroke* **2003**, *34*, 1710–1716. [[CrossRef](#)]
52. Murthy, S.B.; Gupta, A.; Merkler, A.E.; Navi, B.B.; Mandava, P.; Iadecola, C.; Sheth, K.N.; Hanley, D.F.; Ziai, W.C.; Kamel, H. Restarting anticoagulant therapy after intracranial hemorrhage: A systematic review and meta-analysis. *Stroke* **2017**, *48*, 1594–1600. [[CrossRef](#)]
53. Nielsen, P.B.; Larsen, T.B.; Skjøth, F.; Gorst-Rasmussen, A.; Rasmussen, L.H.; Lip, G.Y. Restarting anticoagulant treatment after intracranial hemorrhage in patients with atrial fibrillation and the impact on recurrent stroke, mortality, and bleeding: A nationwide cohort study. *Circulation* **2015**, *132*, 517–525. [[CrossRef](#)]
54. Kuramatsu, J.B.; Gerner, S.T.; Schellinger, P.D.; Glahn, J.; Endres, M.; Sobesky, J.; Flechsenhar, J.; Neugebauer, H.; Jüttler, E.; Grau, A.; et al. Anticoagulant reversal, blood pressure levels, and anticoagulant resumption in patients with anticoagulation-related intracerebral hemorrhage. *JAMA* **2015**, *313*, 824–836. [[CrossRef](#)] [[PubMed](#)]
55. Hemphill, J.C., 3rd; Greenberg, S.M.; Anderson, C.S.; Becker, K.; Bendok, B.R.; Cushman, M.; Fung, G.L.; Goldstein, J.N.; Macdonald, R.L.; Mitchell, P.H.; et al. American Heart Association Stroke Council; Council on Cardiovascular and Stroke Nursing; Council on Clinical Cardiology. Guidelines for the Management of Spontaneous Intracerebral Hemorrhage: A Guideline for Healthcare Professionals from the American Heart Association/American Stroke Association. *Stroke* **2015**, *46*, 2032–2060.
56. Wilson, D.; Hostettler, I.C.; Ambler, G.; Banerjee, G.; Jäger, H.R.; Werring, D.J. Convexity subarachnoid haemorrhage has a high risk of intracerebral haemorrhage in suspected cerebral amyloid angiopathy. *J. Neurol.* **2017**, *264*, 664–673. [[CrossRef](#)] [[PubMed](#)]
57. Mehndiratta, P.; Manjila, S.; Ostergard, T.; Eisele, S.; Cohen, M.L.; Sila, C.; Selman, W.R. Cerebral amyloid angiopathy-associated intracerebral hemorrhage: Pathology and management. *Neurosurg. Focus* **2012**, *32*, E7. [[CrossRef](#)]
58. Iwata, N.; Tsubuki, S.; Takaki, Y.; Watanabe, K.; Sekiguchi, M.; Hosoki, E.; Kawashima-Morishima, M.; Lee, H.J.; Hama, E.; Sekine-Aizawa, Y.; et al. Identification of the major A $\beta_{1-42}$ -degrading catabolic pathway in brain parenchyma: Suppression leads to biochemical and pathological deposition. *Nat. Med.* **2000**, *6*, 143–150. [[CrossRef](#)] [[PubMed](#)]
59. Iwata, N.; Tsubuki, S.; Takaki, Y.; Shirotani, K.; Lu, B.; Gerard, N.P.; Gerard, C.; Hama, E.; Lee, H.J.; Saido, T.C. Metabolic regulation of brain A $\beta$  by neprilysin. *Science* **2001**, *292*, 1550–1552. [[CrossRef](#)]
60. Bourassa, P.; Tremblay, C.; Schneider, J.A.; Bennett, D.A.; Calon, F. Beta-amyloid pathology in human brain microvessel extracts from the parietal cortex: Relation with cerebral amyloid angiopathy and Alzheimer's disease. *Acta Neuropathol.* **2019**, *137*, 801–823. [[CrossRef](#)]
61. Iwata, N.; Mizukami, H.; Shirotani, K.; Takaki, Y.; Muramatsu, S.; Lu, B.; Gerard, N.P.; Gerard, C.; Ozawa, K.; Saido, T.C. Presynaptic localization of neprilysin contributes to efficient clearance of amyloid- $\beta$  peptide in mouse brain. *J. Neurosci.* **2004**, *24*, 991–998. [[CrossRef](#)] [[PubMed](#)]
62. Bernstein, H.G.; Ansorge, S.; Riederer, P.; Reiser, M.; Frölich, L.; Bogerts, B. Insulin-degrading enzyme in the Alzheimer's disease brain: Prominent localization in neurons and senile plaques. *Neurosci. Lett.* **1999**, *263*, 161–164. [[CrossRef](#)]
63. Cook, D.G.; Leverenz, J.B.; McMillan, P.J.; Kulstad, J.J.; Ericksen, S.; Roth, R.A.; Schellenberg, G.D.; Jin, L.W.; Kovacina, K.S.; Craft, S. Reduced hippocampal insulin-degrading enzyme in late-onset Alzheimer's disease is associated with the apolipoprotein E- $\epsilon$ 4 allele. *Am. J. Pathol.* **2003**, *162*, 313–319. [[CrossRef](#)]
64. Vekrellis, K.; Ye, Z.; Qiu, W.Q.; Walsh, D.; Hartley, D.; Chesneau, V.; Rosner, M.R.; Selkoe, D.J. Neurons regulate extracellular levels of amyloid  $\beta$ -protein via proteolysis by insulin-degrading enzyme. *J. Neurosci.* **2000**, *20*, 1657–1665. [[CrossRef](#)] [[PubMed](#)]
65. Miller, B.C.; Eckman, E.A.; Sambamurti, K.; Dobbs, N.; Chow, K.M.; Eckman, C.B.; Hersh, L.B.; Thiele, D.L. Amyloid- $\beta$  peptide levels in brain are inversely correlated with insulin activity levels in vivo. *Proc. Natl. Acad. Sci. USA* **2003**, *100*, 6221–6226. [[CrossRef](#)] [[PubMed](#)]

66. Stargardt, A.; Gillis, J.; Kamphuis, W.; Wiemhoefer, A.; Kooijman, L.; Raspe, M.; Benckhuijsen, W.; Drijfhout, J.W.; Hol, E.M.; Reits, E. Reduced amyloid- $\beta$  degradation in early Alzheimer's disease but not in the APP<sub>swe</sub>PS1dE9 and 3xTg-AD mouse models. *Aging Cell* **2013**, *12*, 499–507. [[CrossRef](#)]
67. Inoue, Y.; Ueda, M.; Masuda, T.; Misumi, Y.; Yamashita, T.; Ando, Y. Memantine, a noncompetitive N-methyl-D-aspartate receptor antagonist, attenuates cerebral amyloid angiopathy by increasing insulin-degrading enzyme expression. *Mol. Neurobiol.* **2019**, *56*, 8573–8588. [[CrossRef](#)] [[PubMed](#)]
68. Du, J.; Chang, J.; Guo, S.; Zhang, Q.; Wang, Z. ApoE 4 reduces the expression of A $\beta$  degrading enzyme IDE by activating the NMDA receptor in hippocampal neurons. *Neurosci. Lett.* **2009**, *464*, 140–145. [[CrossRef](#)]
69. Lopez Salon, M.; Pasquini, L.; Besio Moreno, M.; Pasquini, J.M.; Soto, E. Relationship between beta-amyloid degradation and the 26S proteasome in neural cells. *Exp. Neurol.* **2003**, *180*, 131–143. [[CrossRef](#)]
70. Kanekiyo, T.; Liu, C.C.; Shinohara, M.; Li, J.; Bu, G. LRP1 in brain vascular smooth muscle cells mediates local clearance of Alzheimer's amyloid- $\beta$ . *J. Neurosci.* **2012**, *32*, 16458–16465. [[CrossRef](#)]
71. Kanekiyo, T.; Cirrito, J.R.; Liu, C.C.; Shinohara, M.; Li, J.; Schuler, D.R.; Shinohara, M.; Holtzman, D.M.; Bu, G. Neuronal clearance of amyloid- $\beta$  by endocytic receptor LRP1. *J. Neurosci.* **2013**, *33*, 19276–19283. [[CrossRef](#)]
72. Abuznait, A.H.; Qosa, H.; Busnena, B.A.; El Sayed, K.A.; Kaddoumi, A. Olive-oil-derived oleocanthal enhances  $\beta$ -amyloid clearance as a potential neuroprotective mechanism against Alzheimer's disease: In vitro and in vivo studies. *ACS Chem. Neurosci.* **2013**, *4*, 973–982. [[CrossRef](#)]
73. Qosa, H.; Batarseh, Y.S.; Mohyeldin, M.M.; El Sayed, K.A.; Keller, J.N.; Kaddoumi, A. Oleocanthal enhances amyloid- $\beta$  clearance from the brains of TgSwDI mice and in vitro across a human blood-brain barrier model. *ACS Chem. Neurosci.* **2015**, *6*, 1849–1859. [[CrossRef](#)]
74. Carare, R.O.; Hawkes, C.A.; Jeffrey, M.; Kalaria, R.N.; Weller, R.O. Review: Cerebral amyloid angiopathy, prion angiopathy, CADASIL and the spectrum of protein elimination failure angiopathies (PEFA) in neurodegenerative disease with a focus on therapy. *Neuropathol. Appl. Neurobiol.* **2013**, *39*, 593–611. [[CrossRef](#)] [[PubMed](#)]
75. Weller, R.O.; Hawkes, C.A.; Kalaria, R.N.; Werring, D.J.; Carare, R.O. White matter changes in dementia: Role of impaired drainage of interstitial fluid. *Brain Pathol.* **2015**, *25*, 63–78. [[CrossRef](#)] [[PubMed](#)]
76. Nicoll, J.A.; Wilkinson, D.; Holmes, C.; Steart, P.; Markham, H.; Weller, R.O. Neuropathology of human Alzheimer disease after immunization with amyloid- $\beta$  peptide: A case report. *Nat. Med.* **2003**, *9*, 448–452. [[CrossRef](#)]
77. Bakker, E.N.; Bacskaï, B.J.; Arbel-Ornath, M.; Aldea, R.; Bedussi, B.; Morris, A.W.; Weller, R.O.; Carare, R.O. Lymphatic clearance of the brain: Perivascular, paravascular and significance for neurodegenerative diseases. *Cell. Mol. Neurobiol.* **2016**, *36*, 181–194. [[CrossRef](#)] [[PubMed](#)]
78. Carare, R.O.; Bernardes-Silva, M.; Newman, T.A.; Page, A.M.; Nicoll, J.A.; Perry, V.H.; Weller, R.O. Solutes, but not cells, drain from the brain parenchyma along basement membranes of capillaries and arteries: Significance for cerebral amyloid angiopathy and neuroimmunology. *Neuropathol. Appl. Neurobiol.* **2008**, *34*, 131–144. [[CrossRef](#)] [[PubMed](#)]
79. Tarasoff-Conway, J.M.; Carare, R.O.; Osorio, R.S.; Glodzik, L.; Butler, T.; Fieremans, E.; Axel, L.; Rusinek, H.; Nicholson, C.; Zlokovic, B.V.; et al. Clearance systems in the brain—implications for Alzheimer disease. *Nat. Rev. Neurol.* **2015**, *11*, 457–470. [[CrossRef](#)]
80. Weller, R.O.; Subash, M.; Preston, S.D.; Mazanti, I.; Carare, R.O. Perivascular drainage of amyloid- $\beta$  peptides from the brain and its failure in cerebral amyloid angiopathy and Alzheimer's disease. *Brain Pathol.* **2008**, *18*, 253–266. [[CrossRef](#)]
81. Schley, D.; Carare-Nnadi, R.; Please, C.P.; Perry, V.H.; Weller, R.O. Mechanisms to explain the reverse perivascular transport of solutes out of the brain. *J. Theor. Biol.* **2006**, *238*, 962–974. [[CrossRef](#)] [[PubMed](#)]
82. Morris, A.W.; Sharp, M.M.; Albargothy, N.J.; Fernandes, R.; Hawkes, C.A.; Verma, A.; Weller, R.O.; Carare, R.O. Vascular basement membranes as pathways for the passage of fluid into and out of the brain. *Acta Neuropathol.* **2016**, *131*, 725–736. [[CrossRef](#)] [[PubMed](#)]
83. Nedergaard, M. Neuroscience. Garbage truck of the brain. *Science* **2013**, *340*, 1529–1530. [[CrossRef](#)] [[PubMed](#)]
84. Smith, A.J.; Yao, X.; Dix, J.A.; Jin, B.J.; Verkman, A.S. Test of the 'glymphatic' hypothesis demonstrates diffusive and aquaporin-4-independent solute transport in rodent brain parenchyma. *Elife* **2017**, *6*, e27679. [[CrossRef](#)]
85. Mestre, H.; Hablitz, L.M.; Xavier, A.L.; Feng, W.; Zou, W.; Pu, T.; Monai, H.; Murlidharan, G.; Castellanos Rivera, R.M.; Simon, M.J.; et al. Aquaporin-4-dependent glymphatic solute transport in the rodent brain. *eLife* **2018**, *7*, e40070. [[CrossRef](#)]
86. Wilcock, D.M.; Vitek, M.P.; Colton, C.A. Vascular amyloid alters astrocytic water and potassium channels in mouse models and humans with Alzheimer's disease. *Neuroscience* **2009**, *159*, 1055–1069. [[CrossRef](#)] [[PubMed](#)]
87. Maki, T.; Okamoto, Y.; Carare, R.O.; Hase, Y.; Hattori, Y.; Hawkes, C.A.; Saito, S.; Yamamoto, Y.; Terasaki, Y.; Ishibashi-Ueda, H.; et al. Phosphodiesterase III inhibitor promotes drainage of cerebrovascular  $\beta$ -amyloid. *Ann. Clin. Transl. Neurol.* **2014**, *1*, 519–533. [[CrossRef](#)]
88. Saito, S.; Yamamoto, Y.; Maki, T.; Hattori, Y.; Ito, H.; Mizuno, K.; Harada-Shiba, M.; Kalaria, R.N.; Fukushima, M.; Takahashi, R.; et al. Taxifolin inhibits amyloid- $\beta$  oligomer formation and fully restores vascular integrity and memory in cerebral amyloid angiopathy. *Acta Neuropathol. Commun.* **2017**, *5*, 26. [[CrossRef](#)]
89. Yan, P.; Zhu, A.; Liao, F.; Xiao, Q.; Kraft, A.; Gonzales, E.; Perez, R.; Greenberg, S.M.; Holtzman, D.; Lee, J.M. Minocycline reduces spontaneous hemorrhage in mouse models of cerebral amyloid angiopathy. *Stroke* **2015**, *46*, 1633–1640. [[CrossRef](#)]

90. Arima, H.; Tzourio, C.; Anderson, C.; Woodward, M.; Bousser, M.G.; MacMahon, S.; Neal, B.; Chalmers, J.; PROGRESS Collaborative Group. Effects of perindopril-based lowering of blood pressure on intracerebral hemorrhage related to amyloid angiopathy: The PROGRESS trial. *Stroke* **2010**, *41*, 394–396. [[CrossRef](#)]
91. Inoue, Y.; Ueda, M.; Tasaki, M.; Takeshima, A.; Nagatoshi, A.; Masuda, T.; Misumi, Y.; Kosaka, T.; Nomura, T.; Mizukami, M.; et al. Sushi repeat-containing protein 1: A novel disease-associated molecule in cerebral amyloid angiopathy. *Acta Neuropathol.* **2017**, *134*, 605–617. [[CrossRef](#)] [[PubMed](#)]
92. Pawłowski, K.; Muszewska, A.; Lenart, A.; Szczepińska, T.; Godzik, A.; Grynberg, M. A widespread peroxiredoxin-like domain present in tumor suppression- and progression-implicated proteins. *BMC Genom.* **2010**, *11*, 590. [[CrossRef](#)] [[PubMed](#)]
93. Shimakage, M.; Kawahara, K.; Kikkawa, N.; Sasagawa, T.; Yutsudo, M.; Inoue, H. Down-regulation of *drs* mRNA in human colon adenocarcinomas. *Int. J. Cancer* **2000**, *87*, 5–11. [[CrossRef](#)]
94. Tambe, Y.; Isono, T.; Haraguchi, S.; Yoshioka-Yamashita, A.; Yutsudo, M.; Inoue, H. A novel apoptotic pathway induced by the *drs* tumor suppressor gene. *Oncogene* **2004**, *23*, 2977–2987. [[CrossRef](#)]
95. Meindl, A.; Carvalho, M.R.; Herrmann, K.; Lorenz, B.; Achatz, H.; Lorenz, B.; Apfelstedt-Sylla, E.; Wittwer, B.; Ross, M.; Meitinger, T. A gene (*SRPX*) encoding a sushi-repeat-containing protein is deleted in patients with X-linked retinitis pigmentosa. *Hum. Mol. Genet.* **1995**, *4*, 2339–2346. [[CrossRef](#)]
96. Kim, C.J.; Shimakage, M.; Kushima, R.; Mukaisho, K.; Shinka, T.; Okada, Y.; Inoue, H. Down-regulation of *drs* mRNA in human prostate carcinomas. *Hum. Pathol.* **2003**, *34*, 654–657. [[CrossRef](#)]
97. Endo, Y.; Hasegawa, K.; Nomura, R.; Arishima, H.; Kikuta, K.I.; Yamashita, T.; Inoue, Y.; Ueda, M.; Ando, Y.; Wilson, M.R.; et al. Apolipoprotein E and clusterin inhibit the early phase of amyloid- $\beta$  aggregation in an in vitro model of cerebral amyloid angiopathy. *Acta Neuropathol. Commun.* **2019**, *7*, 12. [[CrossRef](#)] [[PubMed](#)]
98. Hasegawa, K.; Ozawa, D.; Ookoshi, T.; Naiki, H. Surface-bound basement membrane components accelerate amyloid- $\beta$  peptide nucleation in air-free wells: An in vitro model of cerebral amyloid angiopathy. *Biochim. Biophys. Acta* **2013**, *1834*, 1624–1631. [[CrossRef](#)]
99. Manousopoulou, A.; Gatherer, M.; Smith, C.; Nicoll, J.A.R.; Woelk, C.H.; Johnson, M.; Kalaria, R.; Attems, J.; Garbis, S.D.; Carare, R.O. Systems proteomic analysis reveals that clusterin and tissue inhibitor of metalloproteinases 3 increase in leptomeningeal arteries affected by cerebral amyloid angiopathy. *Neuropathol. Appl. Neurobiol.* **2017**, *43*, 492–504. [[CrossRef](#)]
100. Hondius, D.C.; Eigenhuis, K.N.; Morrema, T.H.J.; van der Schors, R.C.; van Nierop, P.; Bugiani, M.; Li, K.W.; Hoozemans, J.J.M.; Smit, A.B.; Rozemuller, A.J.M. Proteomics analysis identifies new markers associated with capillary cerebral amyloid angiopathy in Alzheimer's disease. *Acta Neuropathol. Commun.* **2018**, *6*, 46. [[CrossRef](#)]
101. Woo, D.; Falcone, G.J.; Devan, W.J.; Brown, W.M.; Biffi, A.; Howard, T.D.; Anderson, C.D.; Brouwers, H.B.; Valant, V.; Battey, T.W.; et al. Meta-analysis of genome-wide association studies identifies 1q22 as a susceptibility locus for intracerebral hemorrhage. *Am. J. Hum. Genet.* **2014**, *94*, 511–521. [[CrossRef](#)]
102. Marini, S.; Crawford, K.; Morotti, A.; Lee, M.J.; Pezzini, A.; Moomaw, C.J.; Flaherty, M.L.; Montaner, J.; Roquer, J.; Jimenez-Conde, J.; et al. Association of apolipoprotein E with intracerebral hemorrhage risk by race/ethnicity: A meta-analysis. *JAMA Neurol.* **2019**, *76*, 480–491. [[CrossRef](#)]
103. Verghese, P.B.; Castellano, J.M.; Garai, K.; Wang, Y.; Jiang, H.; Shah, A.; Bu, G.; Frieden, C.; Holtzman, D.M. ApoE influences amyloid- $\beta$  ( $A\beta$ ) clearance despite minimal apoE/ $A\beta$  association in physiological conditions. *Proc. Natl. Acad. Sci. USA* **2013**, *110*, 1807–1816. [[CrossRef](#)]
104. Huynh, T.V.; Davis, A.A.; Ulrich, J.D.; Holtzman, D.M. Apolipoprotein E and Alzheimer's disease: The influence of apolipoprotein E on amyloid- $\beta$  and other amyloidogenic proteins. *J. Lipid Res.* **2017**, *58*, 824–836. [[CrossRef](#)] [[PubMed](#)]
105. Liu, Y.; Yu, J.T.; Wang, H.F.; Han, P.R.; Tan, C.C.; Wang, C.; Meng, X.F.; Risacher, S.L.; Saykin, A.J.; Tan, L. APOE genotype and neuroimaging markers of Alzheimer's disease: Systematic review and meta-analysis. *J. Neurol. Neurosurg. Psychiatry* **2015**, *86*, 127–134. [[CrossRef](#)] [[PubMed](#)]
106. Greenberg, S.M.; Rebeck, G.W.; Vonsattel, J.P.; Gomez-Isla, T.; Hyman, B.T. Apolipoprotein E  $\epsilon$ 4 and cerebral hemorrhage associated with amyloid angiopathy. *Ann. Neurol.* **1995**, *38*, 254–259. [[CrossRef](#)]
107. O'Donnell, H.C.; Rosand, J.; Knudsen, K.A.; Furie, K.L.; Segal, A.Z.; Chiu, R.I.; Ikeda, D.; Greenberg, S.M. Apolipoprotein E genotype and the risk of recurrent lobar intracerebral hemorrhage. *N. Engl. J. Med.* **2000**, *342*, 240–245. [[CrossRef](#)]
108. Attems, J.; Jellinger, K.; Thal, D.R.; Van Nostrand, W. Review: Sporadic cerebral amyloid angiopathy. *Neuropathol. Appl. Neurobiol.* **2011**, *37*, 75–93. [[CrossRef](#)] [[PubMed](#)]
109. Jaynes, B.; Provias, J. The possible role of capillary cerebral amyloid angiopathy in Alzheimer lesion development: A regional comparison. *Acta Neuropathol.* **2006**, *112*, 417–427. [[CrossRef](#)] [[PubMed](#)]
110. Yamada, M. Cerebral amyloid angiopathy: Emerging concepts. *J. Stroke* **2015**, *17*, 17–30. [[CrossRef](#)] [[PubMed](#)]
111. Thal, D.R.; Ghebremedhin, E.; Rüb, U.; Yamaguchi, H.; Del Tredici, K.; Braak, H. Two types of sporadic cerebral amyloid angiopathy. *J. Neuropathol. Exp. Neurol.* **2002**, *61*, 282–293. [[CrossRef](#)] [[PubMed](#)]
112. Thal, D.R.; Papassotiropoulos, A.; Saido, T.C.; Griffin, W.S.; Mrazek, R.E.; Kölsch, H.; Del Tredici, K.; Attems, J.; Ghebremedhin, E. Capillary cerebral amyloid angiopathy identifies a distinct *APOE*  $\epsilon$ 4-associated subtype of sporadic Alzheimer's disease. *Acta Neuropathol.* **2010**, *120*, 169–183. [[CrossRef](#)] [[PubMed](#)]
113. Mesker, D.J.; Poels, M.M.; Ikram, M.A.; Vernooij, M.W.; Hofman, A.; Vrooman, H.A.; van der Lugt, A.; Breteler, M.M. Lobar distribution of cerebral microbleeds: The Rotterdam Scan Study. *Arch. Neurol.* **2011**, *68*, 656–659. [[CrossRef](#)] [[PubMed](#)]

114. Pettersen, J.A.; Sathiyamoorthy, G.; Gao, F.Q.; Szilagyi, G.; Nadkarni, N.K.; St George-Hyslop, P.; Rogaeva, E.; Black, S.E. Microbleed topography, leukoaraiosis, and cognition in probable Alzheimer disease from the Sunnybrook dementia study. *Arch. Neurol.* **2008**, *65*, 790–795. [[CrossRef](#)]
115. Biffi, A.; Anderson, C.D.; Jagiella, J.M.; Schmidt, H.; Kissela, B.; Hansen, B.M.; Jimenez-Conde, J.; Pires, C.R.; Ayres, A.M.; Schwab, K.; et al. APOE genotype and extent of bleeding and outcome in lobar intracerebral haemorrhage: A genetic association study. *Lancet Neurol.* **2011**, *10*, 702–709. [[CrossRef](#)]
116. Greenberg, S.M.; Vonsattel, J.P.; Segal, A.Z.; Chiu, R.I.; Clatworthy, A.E.; Liao, A.; Hyman, B.T.; Rebeck, G.W. Association of apolipoprotein E  $\epsilon$ 2 and vasculopathy in cerebral amyloid angiopathy. *Neurology* **1998**, *50*, 961–965. [[CrossRef](#)]
117. McCarron, M.O.; Nicoll, J.A.; Stewart, J.; Ironside, J.W.; Mann, D.M.; Love, S.; Graham, D.I.; Dewar, D. The apolipoprotein E  $\epsilon$ 2 allele and the pathological features in cerebral amyloid angiopathy-related hemorrhage. *J. Neuropathol. Exp. Neurol.* **1999**, *58*, 711–718. [[CrossRef](#)]
118. Kanekiyo, T.; Xu, H.; Bu, G. ApoE and A $\beta$  in Alzheimer's disease: Accidental encounters or partners? *Neuron* **2014**, *81*, 740–754. [[CrossRef](#)]
119. Kim, J.; Basak, J.M.; Holtzman, D.M. The role of apolipoprotein E in Alzheimer's disease. *Neuron* **2009**, *63*, 287–303. [[CrossRef](#)]
120. Holtzman, D.M.; Fagan, A.M.; Mackey, B.; Tenkova, T.; Sartorius, L.; Paul, S.M.; Bales, K.; Ashe, K.H.; Irizarry, M.C.; Hyman, B.T. Apolipoprotein E facilitates neuritic and cerebrovascular plaque formation in an Alzheimer's disease model. *Ann. Neurol.* **2000**, *47*, 739–747. [[CrossRef](#)]
121. Holtzman, D.M.; Bales, K.R.; Tenkova, T.; Fagan, A.M.; Parsadanian, M.; Sartorius, L.J.; Mackey, B.; Olney, J.; McKeel, D.; Wozniak, D.; et al. Apolipoprotein E isoform-dependent amyloid deposition and neuritic degeneration in a mouse model of Alzheimer's disease. *Proc. Natl. Acad. Sci. USA* **2000**, *97*, 2892–2897. [[CrossRef](#)]
122. Wilson, M.R.; Zoubeidi, A. Clusterin as a therapeutic target. *Expert Opin. Ther. Targets* **2017**, *21*, 201–213. [[CrossRef](#)] [[PubMed](#)]
123. Wilson, M.R.; Easterbrook-Smith, S.B. Clusterin is a secreted mammalian chaperone. *Trends Biochem. Sci.* **2000**, *25*, 95–98. [[CrossRef](#)]
124. Humphreys, D.T.; Carver, J.A.; Easterbrook-Smith, S.B.; Wilson, M.R. Clusterin has chaperone-like activity similar to that of small heat shock proteins. *J. Biol. Chem.* **1999**, *274*, 6875–6881. [[CrossRef](#)]
125. Narayan, P.; Meehan, S.; Carver, J.A.; Wilson, M.R.; Dobson, C.M.; Klenerman, D. Amyloid- $\beta$  oligomers are sequestered by both intracellular and extracellular chaperones. *Biochemistry* **2012**, *51*, 9270–9276. [[CrossRef](#)] [[PubMed](#)]
126. Zhao, Z.; Nelson, A.R.; Betsholtz, C.; Zlokovic, B.V. Establishment and dysfunction of the blood-brain barrier. *Cell* **2015**, *163*, 1064–1078. [[CrossRef](#)]
127. Zhao, Z.; Sagare, A.P.; Ma, Q.; Halliday, M.R.; Kong, P.; Kisler, K.; Winkler, E.A.; Ramanathan, A.; Kanekiyo, T.; Bu, G.; et al. Central role for PICALM in amyloid- $\beta$  blood-brain barrier transcytosis and clearance. *Nat. Neurosci.* **2015**, *18*, 978–987. [[CrossRef](#)]
128. Wojtas, A.M.; Kang, S.S.; Olley, B.M.; Gatherer, M.; Shinohara, M.; Lozano, P.A.; Liu, C.C.; Kurti, A.; Baker, K.E.; Dickson, D.W.; et al. Loss of clusterin shifts amyloid deposition to the cerebrovasculature via disruption of perivascular drainage pathways. *Proc. Natl. Acad. Sci. USA* **2017**, *114*, E6962–E6971. [[CrossRef](#)]
129. Kishnani, N.S.; Staskus, P.W.; Yang, T.T.; Masiarz, F.R.; Hawkes, S.P. Identification and characterization of human tissue inhibitor of metalloproteinase-3 and detection of three additional metalloproteinase inhibitor activities in extracellular matrix. *Matrix Biol.* **1995**, *14*, 479–488. [[CrossRef](#)]
130. Basu, R.; Lee, J.; Morton, J.S.; Takawale, A.; Fan, D.; Kandam, V.; Wang, X.; Davidge, S.T.; Kassiri, Z. TIMP3 is the primary TIMP to regulate agonist-induced vascular remodelling and hypertension. *Cardiovasc. Res.* **2013**, *98*, 360–371. [[CrossRef](#)]
131. Chintalgattu, V.; Greenberg, J.; Singh, S.; Chiueh, V.; Gilbert, A.; O'Neill, J.W.; Smith, S.; Jackson, S.; Khakoo, A.Y.; Lee, T. Utility of glycosylated TIMP3 molecules: Inhibition of MMPs and TACE to improve cardiac function in rat myocardial infarct model. *Pharmacol. Res. Perspect.* **2018**, *6*, e00442. [[CrossRef](#)] [[PubMed](#)]
132. Clausen, T.; Kaiser, M.; Huber, R.; Ehrmann, M. HTRA proteases: Regulated proteolysis in protein quality control. *Nat. Rev. Mol. Cell Biol.* **2011**, *12*, 152–162. [[CrossRef](#)] [[PubMed](#)]
133. Grau, S.; Baldi, A.; Bussani, R.; Tian, X.; Stefanescu, R.; Przybylski, M.; Richards, P.; Jones, S.A.; Shridhar, V.; Clausen, T.; et al. Implications of the serine protease HtrA1 in amyloid precursor protein processing. *Proc. Natl. Acad. Sci. USA* **2005**, *102*, 6021–6026. [[CrossRef](#)] [[PubMed](#)]
134. Hara, K.; Shiga, A.; Fukutake, T.; Nozaki, H.; Miyashita, A.; Yokoseki, A.; Kawata, H.; Koyama, A.; Arima, K.; Takahashi, T.; et al. Association of HTRA1 mutations and familial ischemic cerebral small-vessel disease. *N. Engl. J. Med.* **2009**, *360*, 1729–1739. [[CrossRef](#)]