


RESEARCH ARTICLE

Open Access



Effectiveness of a multidisciplinary BIOPSYCHOSOCIAL intervention for non-specific SUBACUTE low back pain in a working population: a cluster randomized clinical trial

Romina Raczky Mas^{1,2,3}, Tomàs López-Jiménez², Enriqueta Pujol-Ribera^{2,3}, María Isabel Fernández-San Martín¹, Jenny Moix-Queralto⁴, Elena Montiel-Morillo⁵, Teresa Rodríguez-Blanco², Marc Casajuana-Closas^{2,3}, M. J. González-Moneo⁶, Ester Núñez Juárez⁷, Montse Núñez Juárez⁸, Mercè Roura-Olivan⁹, Raquel Martín-Peñacoba¹⁰, Magda Pie-Oncins⁶, Montse Balagué-Corbella², Miguel-Ángel Muñoz^{1,2,3}, Concepción Violan² and Anna Berenguera^{2,3*} 

Abstract

Background: Low back pain (LBP) is a multifactorial condition with individual and societal impact that affects populations globally. Current guidelines for the treatment of LBP recommend pharmacological and non-pharmacological strategies. The aim of this study was to compare usual clinical practice with the effectiveness of a biopsychosocial multidisciplinary intervention in reducing disability, severity of pain and improving quality of life in a working population of patients with subacute (2–12 weeks), non-specific LBP.

Methods: Longitudinal cluster randomized clinical trial conducted in 39 Primary Health Care Centres (PHCC) of Barcelona, with patients aged 18–65 years ($n = 501$; control group = 239; 26 PHCC, intervention group = 262; 13 PHCC). The control group received usual clinical care. The intervention group received usual clinical care plus a biopsychosocial multidisciplinary intervention, which consisted of physiotherapy, cognitive-behavioural therapy and medication. The main outcomes were changes in the Roland Morris Disability Questionnaire (RMDQ), and the minimal clinically important differences. Secondary outcomes were changes in the McGill Pain (MGPD) and Quality of Life (SF-12) questionnaires. Assessment was conducted at baseline, 3 and 12 months. Analysis was by intention-to-treat and analyst-blinded. Multiple imputations were used.

(Continued on next page)

* Correspondence: aberenguera@idiapjgol.org; <https://www.idiapjgol.org>

²Institut Universitari d'Investigació en Atenció Primària (IDIAP Jordi Gol), Gran Via Corts Catalanes, 587, àtic, 08007 Barcelona, Spain

³Department of Paediatrics, Gynaecology and Obstetrics and Preventive Medicine, Universitat Autònoma de Barcelona Faculty of Medicine-Bellaterra, 08193 (Cerdanyola del Vallès), Spain

Full list of author information is available at the end of the article



© The Author(s). 2019 **Open Access** This article is distributed under the terms of the Creative Commons Attribution 4.0 International License (<http://creativecommons.org/licenses/by/4.0/>), which permits unrestricted use, distribution, and reproduction in any medium, provided you give appropriate credit to the original author(s) and the source, provide a link to the Creative Commons license, and indicate if changes were made. The Creative Commons Public Domain Dedication waiver (<http://creativecommons.org/publicdomain/zero/1.0/>) applies to the data made available in this article, unless otherwise stated.

(Continued from previous page)

Results: Of the 501 enrolled patients, 421 (84%) provided data at 3 months, and 387 (77.2%) at 12 months. Mean age was 46.8 years (SD: 11.5) and 64.7% were women. In the adjusted analysis of the RMDQ outcome, only the intervention group showed significant changes at 3 months (-1.33 points, $p = 0.005$) and at 12 months (-1.11 points, $p = 0.027$), but minimal clinically important difference were detected in both groups. In the adjusted analysis of the RMDQ outcome, the intervention group improvement more than the control group at 3 months (-1.33 points, $p = 0.005$) and at 12 months (-1.11 points, $p = 0.027$). The intervention group presented a significant difference. Both groups presented a minimal clinically important difference, but more difference in the intervention group. The intervention group presented significant differences in the MGPQ scales of current pain intensity and VAS scores at 3 months. No statistically significant differences were found in the physical and mental domains of the SF-12.

Conclusions: A multidisciplinary biopsychosocial intervention in a working population with non-specific subacute LBP has a small positive impact on disability, and on the level of pain, mainly at short-term, but no difference on quality of life.

Trial registration: [ISRCTN21392091](#) (17 oct 2018) (Prospectively registered).

Keywords: Primary health care, Multidisciplinary biopsychosocial intervention, Non-specific subacute low back pain, Disability, Pain, Quality of life, Cognitive-behavioural therapy

Background

Low back pain (LBP) is a common health problem that affects approximately 80–85% of the general population at least once in their lifetime and has a global prevalence between 17 and 32%, of which 11–12% are disabled by this condition [1, 2]. In a recent survey conducted in Spain, LBP was highly prevalent (50.9%) at all ages, but especially in the working age population (18–65 years old) [3].

The Global Burden of Disease 2010 ranks LBP amongst the top ten causes of DALYs (disability-adjusted life years) [2]. Consequently, LBP is associated with a huge individual and societal burden and remains a frequent reason for medical consultation globally [4]. In Spain alone, LBP generates over 2 million annual consultations in primary care (ENSE 2011/12) [5].

Despite the wide range of treatments and health-care resources devoted to LBP, back-related disability and burden have increased, in recent years [6]. A study carried out in 36 Primary Health Care Centres (PHCC) in Spain showed that despite guideline-based management, the pain continued in 37% and had worsened in 10% of patients after two months [7]. The natural history of LBP can be extremely variable and recurrences are common, with, approximately 65% of patients still experiencing pain one year after the onset of this condition [8, 9].

It is generally accepted that subacute LBP occurs after a period of at least 6 months without LBP, and that it has a duration between 2 and 12 weeks [10]. Research conducted in Spain reported changes in disability, pain and quality of life after 2 weeks of LBP [11]. Once the subacute episode has been established, early interventions are recommended to avoid deterioration, even if it is considered that approximately one third of patients have a favourable evolution [6].

Compared to no treatment and to other guideline recommendations, recent evidence-based studies support a multidisciplinary approach to ameliorate LBP [6]. Accordingly, it has been suggested that the timely integration of multidisciplinary treatment strategies that include physiotherapy, cognitive-behavioural therapy and medication for patients with non-specific subacute LBP, might reduce the individual and social impact [12]. Following a systematic review by Kamper et al. (2014), who adopted the term ‘multidisciplinary biopsychosocial rehabilitation’ to integrate education and physiotherapy with cognitive-behavioural psychology with the aim to improve disability and function, [9] the current NICE guidelines (2016) recommend early multidisciplinary management [13].

Lastly, the main objective of the current study was to evaluate the change in disability using the validated Spanish version of the Roland Morris Disability questionnaire (RMDQ) across the intervention and its association with minimal clinically important differences. The second goal were to assess changes in pain intensity using the McGill Pain Questionnaire (MGPQ) and in quality of life as measured by the Short Form 12-Item (SF-12).

Methods

Design

An analyst-blinded longitudinal cluster randomized controlled clinical trial was conducted. Patients with non-specific subacute LBP treated with a multidisciplinary approach (intervention group) were compared with a control group receiving only usual clinical care. (Current Controlled Trials identifier: [ISRCTN21392091](#)) (17 oct 2018) (Prospectively registered). The study protocol has been previously published [12].

Setting

The trial was conducted in the primary care setting. A total of 39 PHCCs located in Barcelona and its greater metropolitan area participated in the project.

Study population

Patients were included if they presented LBP lasting between 2 and 12 weeks, and if they did not have a history of LBP during the 6 months prior to the current episode [10, 14]. Participants were active workers, aged between 18 and 65 years, they had to understand Catalan or Spanish and were required to be contactable for at least twelve months after the onset of the study. Exclusion criteria were as follows: patients unwilling to participate; LBP that coexisted with cognitive impairment or psychiatric disorders; other causes of disability which impeded responding to the questionnaires; pregnancy and breastfeeding; physical problems in the preceding 3 months; and a diagnosis of fibromyalgia. In addition, the GP had to certify that no signs or symptoms frequently associated with specific LBP or potentially severe illnesses were present. Detailed information about the recruitment procedure has been published elsewhere [12].

Randomization (see flowchart-Fig. 1)

Randomization was by cluster, and the randomization unit was the PHCC. A cluster design was used because the intervention was delivered to groups and to minimize contamination. After the PHCC agreed to participate, they were allocated either to the control or the intervention group. During recruitment, the GPs of the PHCC, who knew about the allocation (intervention or control), identified the patients consulting for new episodes of subacute LBP. The patients who met the inclusion criteria were invited to participate, without knowing the allocation of their PHCC. All patients signed the informed consent form.

Intervention design

Table 1 shows the treatment components of the intervention and the control groups. Both groups received guideline-based pharmacological treatment. Participants in the control group received usual clinical care, based on the *Clinical Guidelines for Lumbar Spine Disorders in Adults* published by the Catalan Institute of Health [15]. Patients allocated to the intervention group received the same care described for the control group, plus the Spanish version of the educational booklet “*The Back Manual*” [16, 17] and some audio visual materials.

The intervention was conducted by a GP and/or nurse, a psychologist and a physiotherapist. The programme lasted a total of 10 h, as explained in Table 1. Sessions took place during the week and lasted between 90 and 120 min. To maximise participant adherence to the group sessions, different times were offered. Each group

included between 6 and 12 participants and some PHCCs had more than one group receiving the same intervention. To guarantee the standardisation of the group sessions, only one qualified psychologist and one physiotherapist with expertise in group interventions implemented the intervention in all PHCCs. At the end of the study, the control group also received the educational booklet and the audio-visual material.

Outcomes measures

The main outcome measurement was change in disability as measured by the *Roland Morris Disability Questionnaire* (RMDQ) [18], translated and validated into Spanish [19] (scale 0–24; lower scores indicate less disability). A minimal clinically important difference in disability under 2.5 RMDQ points compared to the baseline value for subacute and chronic patients was considered negligible [20, 21].

Secondary outcome measurements were: intensity of pain, as evaluated with the Spanish version of the *McGill Pain Questionnaire* (MGPQ) (*McGill Pain Questionnaire*, Melzac, 1975) [22, 23], which assesses 3 parameters with 3 dimensions (sensorial, affective and evaluative): Total Intensity Score (scale 0–14), Current Intensity Score (scale 0–5) and Visual Analogical Scale (VAS, scale 0–10); and the mental and physical health-related quality of life, measured with the Spanish version of Short Form 12 version 1 [24] (SF-12, scale 0–100; lower scores indicate worse health related quality of life).

The main independent variable was the intervention arm: biopsychosocial multidisciplinary intervention, or usual clinical care.

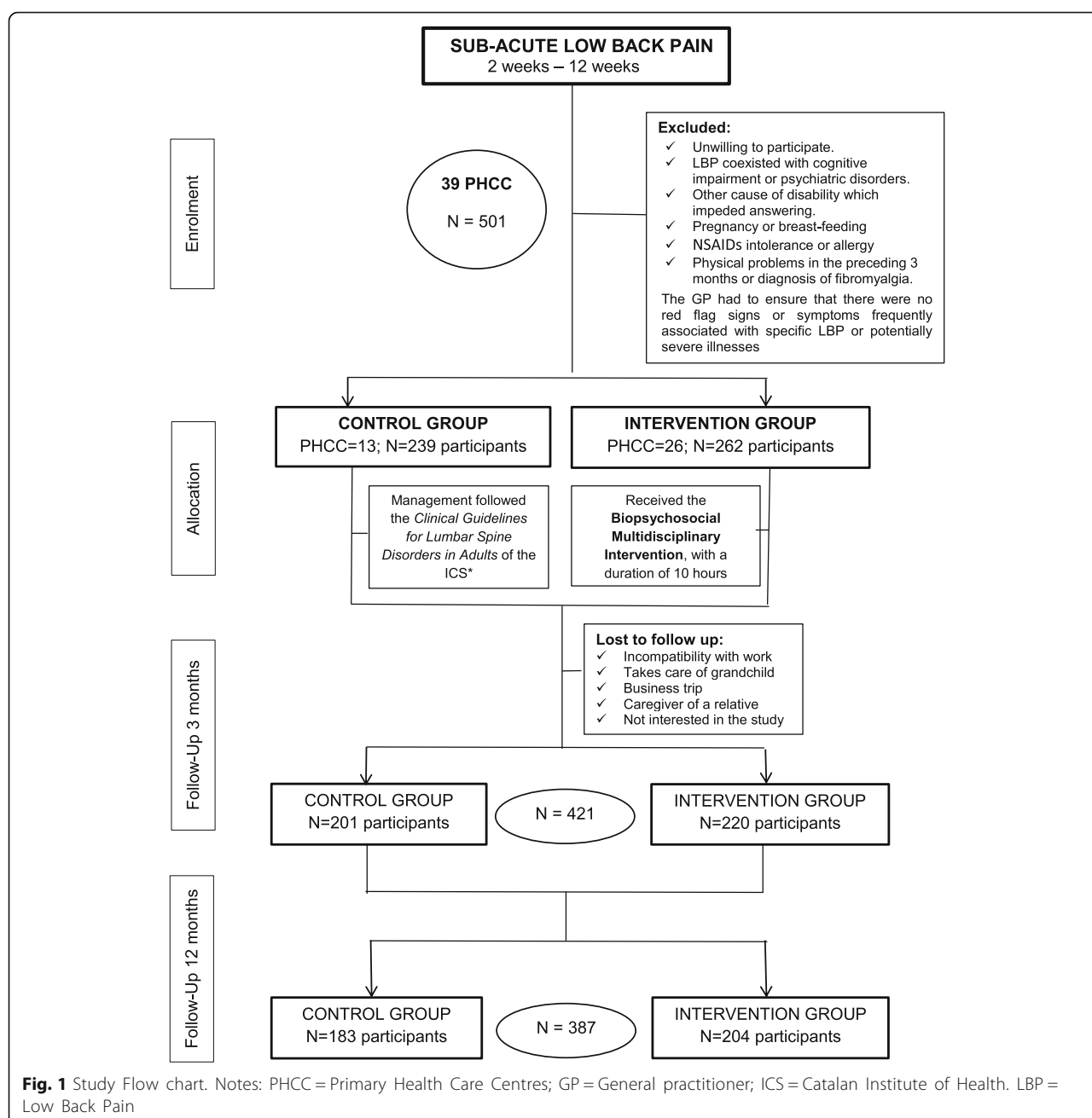
Data collection and follow-up

All participants were invited to attend the PHCC for outcome assessments. They were assessed at baseline and at 3 and 12 months. To maximise patient's adherence and to avoid loss of participants, patients received a phone call at 6 months. Detailed socio-demographic and clinical variables have been published elsewhere [12].

For each assessment, the same two expert psychologists made up to three phone calls at different times during the day to book the appointments and performed the outcome measures by interviewing the participant, collected information by reviewing medical records, contacted the patient's GP to inquire about their development (compliance and factors associated with low back pain) and answered questions about the study. A senior psychologist specialised in pain management conducted the intervention.

Sample size

The sample-size was calculated based on change in RMDQ at three months of follow up. To allow for the cluster randomization by PHCC, we considered an intra-class correlation coefficient of 0.05. In order to detect a



difference of 2.5 points between the two intervention arms with a standard deviation of 5.7, an alpha error of 0.05, a beta error of 0.20, and a 20% dropout rate, a sample size of 348 subjects was required per intervention arm, with a the total number of PHCCs of 36. PASS 15 “Test for Two Means in a Cluster-Randomized Design” module (Utah, USA, ncss.com/software/pass) was used to calculate sample size.

Statistical analysis

Data were analysed in accordance with CONSORT guidelines, extension to cluster randomized trials, and

based on an intention-to-treat principle. The analysis was performed at the individual level using cluster data methods [25].

The intervention effect at each follow-up was assessed using the change (follow-up minus baseline) in the intervention group minus the change in the control group in the outcomes.

To address potential biases due to incomplete follow-up, multiple imputation by chained equations with 100 imputed datasets was applied to outcomes and covariates [26–28]. Estimates from each imputed dataset were combined following the rules outlined by Rubin [29].

Table 1 Components of the biopsychosocial multidisciplinary intervention and usual care

		OBJECTIVE	THEORY PROGRAM	PRACTICAL PROGRAM
INTERVENTION GROUP	GP + Nurse 2 h	Answer queries, demystify concepts about LBP and promote adherence to the intervention	Basics of anatomy and biomechanics of the spine	Pain mechanisms, types, causes and susceptibility factors. Healthy life habits, concerns and beliefs about LBP.
	Physiotherapist 4 h	Provide tools on exercises/postures to avoid pain and improve quality of life	Body posture, ergonomics and benefits	Relaxation exercises (breathing), body awareness and postural control
	Psychologist 4 h	Provide participants with cognitive-behavioural therapy techniques.	Influence of cognition, emotions and behaviour in pain	Relaxation guidelines, cognitive restructuring and time management. Assertiveness and problem solving, life values.
CONTROL GROUP	Clinical Practice Guidelines for Lumbar Spine Disease in Adults <ul style="list-style-type: none"> • Patient education, give reassuring and positive information about the benign nature of LBP, offer written information including specific advice. • Advise avoiding bed rest and encourage the person to be physically active and continue with normal activities as far as possible. • Consider offering a structured physical exercises program tailored to personal preferences. • Physical exercise should be introduced gently at first (walking, cycling and swimming) and progressively increased in intensity. • Recommend attendance to the "Back school" after six weeks to those patients who have resumed their daily tasks. • Prescribe pharmacological treatment according to established guidelines. 			

GP General practitioner, LBP Low Back Pain

After imputation, the distribution of observed and imputed values was practically equal.

Multivariate regression analysis of each outcome variable was performed for the imputed datasets, taking into account the cluster effect in the models. We conducted linear or logistic mixed-effects model and linear or logistic regression adjusting the standard error for the cluster effect of the PHCC. The final models were adjusted for age, gender, baseline outcome measurement, and the significant confounder and significant interaction variables. We used mixed models and the function "mi estimate" in Stata. In these models, we added the variable PHCC as a cluster/multilevel effect. The linear mixed model was used in the cluster data, with two models for each time-point comparing changes at 3 months and at 12 months with baseline data.

Statistical significance was set at $P < 0.05$ (2-tailed). The analyses were performed using Stata/SE version 14.2 for Windows (Stata Corp. LP, College Station, TX, USA).

Results

A total of 501 subjects were included in the study; 262 subjects (13 PHCC) were allocated to the intervention group and 239 subjects (26 PHCC) to the control group. After 3 and 12 months, 421 (84%) and 387 (77.2%) participants provided data, respectively. The losses were due to work incompatibility, caregiving duties and lack of interest in the study (see Flowchart, Fig. 1). In general patients who dropped out were significantly younger.

Mean age of participants at baseline was 46.8 (SD: 11.5) years and 64.7% were women. Table 2 shows baseline socio-demographic characteristics and clinical

variables, with no statistically significant differences between groups.

Table 3. In the adjusted analysis of the RMDQ outcome, the intervention group improvement more than the control group at 3 months (-1.33 points, 95% CI: -2.22 to -0.45 , $p = 0.005$) and at 12 months (-1.11 points, 95% CI: -2.08 to -0.13 , $p = 0.027$). The intervention group presented a significant difference. A minimal clinically important difference was achieved in both groups, with a difference over 3.5 points in the intervention group compared with baseline at each time-point (3.8 RMDQ points at 3 months and 5.1 RMDQ points at 12 months).

Regarding the level of pain in the adjusted analysis, a marginal difference was observed at 12 months in total intensity, in the intervention group (-0.69 points; 95% CI: -1.41 to 0.02 ; $p = 0.058$). However, the intervention group presented a significant differences at 3 months for current intensity score (-0.32 points; 95% CI: -0.63 to -0.02 ; $p = 0.040$) and for VAS score (-0.77 points; 95% CI: -1.53 to -0.01 ; $p = 0.046$).

The outcome of SF-12 increased in both groups during the follow-up period, but no statistically significant differences between groups on the physical and mental health domains were observed.

Discussion

The aim of this study was to evaluate the effectiveness of a multidisciplinary biopsychosocial intervention in an active population with non-specific subacute LBP. The results shown in Table 3 were obtained with multiple imputation, although similar values were obtained without multiple imputation (data not shown). The main results indicate statistically significant differences regarding disability and

Table 2 Baseline socio-demographic characteristics and clinical variables

	Total	Control group	Intervention group
No. of PHCC / No. of patients	39/501	26/239	13/262
Socio-demographic characteristics:			
Age (years), mean (SD)	46.8 (11.5)	46.4 (11.1)	47.2 (11.9)
Sex (female), n (%)	324 (64.7)	145 (60.7)	179 (68.3)
Educational level, n (%) (n = 499)			
▪ Illiterate or primary school only	122 (24.4)	61 (25.6)	61 (23.4)
▪ Secondary school	274 (54.9)	134 (56.3)	140 (53.6)
▪ University	103 (20.6)	43 (18.1)	60 (23.0)
Paid job (yes), n (%)	369 (73.7)	188 (78.7)	181 (69.1)
Clinical variables:			
Body mass index (kg/m ²) classification (n = 500), mean (SD)			
▪ Normal weight	222 (44.4)	105 (43.9)	117 (44.8)
▪ Overweight	195 (39.0)	94 (39.3)	101 (38.7)
▪ Obesity	83 (16.6)	40 (16.7)	43 (16.5)

Abbreviations: SD standard deviation, LBP Low Back Pain, PHCC Primary Health Care Centre. Data are mean (SD) or n(%)

pain intensity, with a small effect in the intervention group. Although greater in the intervention group, minimal clinically important differences in disability were achieved in both groups. No differences were observed regarding quality of life.

The results of this trial agree with some studies on subacute and chronic LBP, where moderate quality evidence showed efficacy in contrast with a non-multidisciplinary rehabilitation [8, 10]. Our findings provide new information on the role of multidisciplinary biopsychosocial interventions delivered in groups in the primary care setting.

The initial study sample consisted of 696 participants and 36 PHCCs. Eventually, 501 participants from 39 PHCCs were recruited, since the period of recruitment was not extendable. Recruitment bias was detected, apparently the GPs of the intervention PHCC were more motivated to recruit. To balance the number of participants, more PHCCs were included in the control group.

The minimal clinically important difference for disability was over 2.5 RMDQ points. Kovacs et al. (2007) showed that an improvement in disability below 2.5 RMDQ points compared to their baseline in each group was clinically irrelevant in patients with subacute and chronic LBP. When analyzing each time-point, differences in disability were greater in the short term in both groups. A meta-analysis of LBP showed noticeable short-term improvement during the first six weeks with multiple treatments, but beyond this time improvement slowed [30]. Some other studies reported that compared with usual care, multidisciplinary rehabilitation reduces pain intensity and disability, mainly short-term (< 3 months) [31]. Specifically, Fritz (2015) evaluated the outcomes of early physiotherapy versus usual care, with

moderate short-term improvement in disability and pain reduction, but no statistically significant improvement after 1 year [32].

We believe that the perceived improvement of disability may be sufficient for some participants but not all. Considering that over 50% of participants in this intervention were women, some studies indicated that patients with greater disability and worse quality of life were frequently women who suffered also from somatic and mood co-morbidities and perceived higher levels of pain [33–35]. In addition, Chow and colleagues pointed at factors that had been associated with persistent disabling LBP, namely maladaptive pain coping behaviour, high baseline functional impairment, and low general health status [36].

According to the MGPO, short-term pain reduction was observed to be slightly better in the intervention group. However, some research indicates that minor improvements might be underestimated by patients with LBP that return to their activity or work when non-disabling pain persists [37, 38]. Other studies confirm positive results in pain reduction within six weeks, and emphasize the benefits of a multidisciplinary intervention [39]. For instance, Kamper and colleagues (2015) found that multidisciplinary biopsychosocial rehabilitation for subacute LBP was more effective than other physical interventions. In contrast, a systematic review conducted by the Cochrane Database 2017 did not find any evidence that this type of intervention was more effective than other treatments for subacute LBP [4].

The positive effect on disability and pain intensity was not corroborated by the results regarding quality of life. The lack of improvement in quality of life might be explained different levels of disability or pain at baseline.

Table 3 Changes in the Roland-Morris Disability, McGill Pain and SF-12 questionnaires between groups at follow-up (N = 501)

	Control Group (n = 239)		Intervention Group (n = 262)		Difference (95%CI) between group (IG - CG)			
	Value	Difference*(95% CI)	Value	Difference*(95% CI)	change IG - CG	P-value	Adjusted difference**	P-value
RMDQ, mean (SD)								
Baseline	9.9 (5.3)		10.0 (5.2)					
three months	7.4 (5.5)	-2.3 (-3.1 to -1.6)	6.2 (4.9)	-3.8 (-4.5 to -3.2)	-1.5 (-2.5 to -0.5)	0.003*	-1.33 (-2.22 to -0.45)	0.005*
12 months	6.0 (5.7)	-3.8 (-4.8 to -2.9)	5.1 (4.9)	-5.1 (-5.8 to -4.3)	-1.2 (-2.4 to -0.0)	0.043*	-1.11 (-2.08 to -0.13)	0.027*
MPQ								
Total intensity score, mean (SD)								
Baseline	6.5 (3.1)		6.7 (3.1)					
three months	4.6 (3.6)	-1.8 (-2.3 to -1.3)	4.0 (3.6)	-2.7 (-3.2 to -2.2)	-0.9 (-1.6 to -0.1)	0.022*	-0.49 (-1.39 to 0.42)	0.294
12 months	3.6 (3.6)	-2.8 (-3.3 to -2.2)	3.1 (3.2)	-3.6 (-4.1 to -3.0)	-0.8 (-1.6 to 0.0)	0.040*	-0.69 (-1.41 to 0.02)	0.058**
Current Intensity score mean (SD)								
Baseline	2.6 (1.1)		2.5 (1.2)					
three months	1.7 (1.5)	-0.9 (-1.1 to -0.7)	1.3 (1.4)	-1.2 (-1.4 to -1.0)	-0.3 (-0.6 to 0.0)	0.083	-0.32 (-0.63 to -0.02)	0.040*
12 months	1.6 (1.4)	-1.1 (-1.3 to 0.8)	1.4 (1.3)	-1.1 (-1.3 to -0.9)	0.0 (-0.3 to 0.3)	0.854	-0.18 (-0.43 to 0.08)	0.162
VAS, mean (SD)								
Baseline	5.9 (2.3)		5.8 (2.3)					
three months	4.1 (3.3)	-1.8 (-2.2 to -1.3)	3.2 (3.2)	-2.7 (-3.1 to -2.2)	-0.9 (-1.6-0.3)	0.004*	-0.77 (-1.53 to -0.01)	0.046*
12 months	3.9 (3.2)	-2.0 (-2.5 to -1.5)	3.6 (3.0)	-2.3 (-2.7 to -1.9)	-0.3 (-0.9 to 0.4)	0.404	-0.27 (-0.88 to 0.34)	0.374
SF-12 Physical health, mean (SD)								
Baseline	40.7 (9.3)		41.9 (9.0)					
three months	45.3 (9.8)	4.2 (2.7 to 5.6)	46.5 (8.7)	4.5 (3.2 to 5.8)	0.4 (-1.6 to 2.3)	0.716	0.55 (-1.19 to 2.29)	0.520
12 months	46.2 (9.5)	5.0 (3.3 to 6.7)	47.0 (8.9)	4.9 (3.5 to 6.3)	-0.1 (-2.3 to 2.1)	0.922	0.53 (-1.20 to 2.27)	0.532
SF-12 Mental health, mean (SD)								
Baseline	42.3 (12.4)		43.4 (12.8)					
three months	45.0 (13.2)	2.6 (0.7 to 4.6)	48.8 (12.0)	5.1 (3.4 to 6.9)	2.5 (-0.1 to 5.0)	0.061	2.56 (-0.33 to 5.45)	0.082
12 months	47.0 (11.9)	5.0 (2.9 to 7.1)	48.9 (11.2)	5.5 (3.6 to 7.5)	0.5 (-2.3 to 3.4)	0.707	1.48 (-0.86 to 3.83)	0.206

Abbreviations: SD standard deviation, CI confidence interval, **RMDQ Roland-Morris Disability Questionnaire** (scale 0–24; lower scores indicate less disability), **MGPO McGill pain questionnaire**; 3 dimensions (sensorial, affective and evaluative) with Total Intensity Score (scale 0–14), Current Intensity Score (scale 0–5) and Visual Analogical Scale (VAS, scale 0–10); **SF-12** = 12-item short-form health survey version 1 (scale 0–100; lower scores indicate worse health related quality of life). * Differences were calculated between follow-up and baseline measurements. Mean differences are shown for quantitative outcomes and percentage differences for dichotomous outcomes. **All models were adjusted for the score at baseline, significant confounders and significant interaction variables. Intervention group minus usual care group, mean differences are shown for quantitative outcomes and odds ratios for dichotomous outcomes. Total Intensity Score, VAS Pain Score and Mental Health were estimated with a mixed model considering the PHCC as random effect

For some patients, the effect at follow-up might not achieve their expectations of improvement. In patients with levels of disability or pain that are moderate or low at baseline, the effect of the intervention will have a better perceived impact. Other findings suggest that early active physiotherapy can lead to improved outcomes in global health perception [34]. Interestingly, some authors define the relationship between physical activity and the risk of chronic LBP as a U-shaped distribution, i.e., both too little and excessive activity presented increased risks of chronic LBP and worse quality of life [36, 40, 41]. Other factors that intervene in the evolution of LBP include explaining the natural history of this condition and the implementation of the guidelines that seek to relieve or minimize pain.

Further research

Further research on complex interventions in LBP should consider the UK Medical Research Council (MRC) framework, which consists of several phases that can be iterated and that use qualitative and quantitative methods. This methodology includes the perspective of the patient throughout the study in order to design the intervention based on the population needs, preferences and experiences. The MRC methodology aims to design feasible, effective and sustainable interventions for the primary health care setting.

Finally, we must encourage the collaboration of primary care professionals and the community in everyday clinical practice and in large scale, multidisciplinary interventions.

Limitations of the study

The number of missing data was similar for both groups at three and 12 months of follow-up. However, the following were more likely to drop out of the study: younger people; people with a lower consumption of analgesics; and at 12 months follow-up, patients with lower family burden and better jobs.

Some confounding factors might limit the conclusions of this study. For instance, the differences in the profile of patients, since they were allocated by PHCC and socioeconomic status was not considered.

One of the most important limitations of the study was recruitment, since more PCHH were allocated to the control group than the intervention group.

Conclusions

The main conclusion of this study is that a multidisciplinary biopsychosocial intervention in a working population with non-specific subacute LBP has a small positive effect on disability and intensity of pain. Although greater in the intervention group, minimal clinically important differences were achieved in both groups. The results did not show any differences on quality of life.

The results of this biopsychosocial multidisciplinary intervention agree with previous studies, which also show limited effectiveness. The main advantage of delivering an intervention from a PHCC is geographical proximity, which should result in higher adherence. In patients with pain, travelling long distances has usually a negative physical and financial impact. Finally, the constellation of symptoms presented by patients with LBP still constitutes a challenge for medical and surgical decision making.

Abbreviations

GP: General practitioner; LPB: Low back pain; MGPD: McGill pain questionnaire; NSAIDs: Non-steroidal anti-inflammatory drugs; PHCC: Primary health care centre; QoL: Quality of life SF12; RMDQ: Roland morris disability questionnaire; VAS: Visual analogical scale

Acknowledgements

We thank all patients and healthcare professionals who participated in the study for taking the time to share their experiences. We also thank FM Kovacs for sharing invaluable experience and suggestions.

Authors' contributions

TR, MIF, EM, JM, MR, MJG, EN, MN, MP, RM, MB, CV and EPR designed the study. The study was coordinated by AB and EPR. TRB, MIF, EM, JM, MP, RM and EPR conducted the study. EM, JM, MJG and MP implemented the intervention. RR, AB, TR, MC, EPR and TLJ analysed and interpreted the data. RR, AB, TR, MAM, EPR, CV and TLJ drafted the manuscript and incorporated the amendments suggested by the co-authors. All authors have read and approved the final version of the manuscript.

Funding

This study was supported by the Marató TV3 and a grant from the Primary Care Management Barcelona Ciutat-ICS. The funding body had not any role in the design of the study, the collection, analysis, and interpretation of data and in writing the manuscript.

RR was awarded the following two grants: "Beca Xb, per a la Realització de Tesis Doctorals", by the Gerència territorial de Barcelona, Catalan Institute of

Health and the "Beca ICS per a la capacitat en investigació i realització del doctorat a l'Atenció Primària", by the IDIAP Jordi Gol together with the Catalan Institute of Health.

Availability of data and materials

The datasets used during the current study are available from the corresponding author on reasonable request.

Ethics approval and consent to participate

This study was approved by the Clinical Research Ethics Committee of the Institute of Research in Primary Health Care IDIAP Jordi Gol (P07/25). Confidentiality and anonymity of the data were ensured in accordance with the 15/1999 Data Confidentiality Law. Informed Consent: The information was provided orally as well as written. Study subjects had sufficient opportunity to ask questions regarding study details. Informed consent followed the guidelines of the Helsinki Declaration. Data confidentiality: Confidentiality and anonymity of the data was ensured, both in the implementation phase of the project and in presentations or publications resulting there from. Individual data was codified to ensure anonymity. Only researchers and monitors had access to the data.

Consent for publication

Not applicable.

Competing interests

None declared.

Author details

¹Gerència Territorial de Barcelona, Catalan Institute of Health, c/ Sardanya, 375, Entl, 08025 Barcelona, Spain. ²Institut Universitari d'Investigació en Atenció Primària (IDIAP Jordi Gol), Gran Via Corts Catalanes, 587, àtic, 08007 Barcelona, Spain. ³Department of Paediatrics, Gynaecology and Obstetrics and Preventive Medicine, Universitat Autònoma de Barcelona Faculty of Medicine-Bellaterra, 08193 (Cerdanyola del Vallès), Spain. ⁴Department of Basic, Evolutionary and Educational Psychology, Universitat Autònoma de Barcelona Faculty of Psychology, Building B. Campus de la UAB, Bellaterra, 08193 Barcelona, Spain. ⁵Hospital de la Santa Creu i de Sant Pau, 08041 Barcelona, Spain. ⁶Primary Care Centre Sant Martí, SAP Litoral, 08020 Barcelona, Spain. ⁷SAP Support to Diagnosis and Treatment, Gerència Territorial de Barcelona, Catalan Institute of Health, 08001 Barcelona, Spain. ⁸Unit of Functional Rehabilitation, Department of Rheumatology, Hospital Clínic Universitari, 08036 Barcelona, Spain. ⁹Primary Care Centre Sant Andreu, SAP Muntanya, 08030 Barcelona, Spain. ¹⁰Primary Care Centre Sant Antoni, SAP Esquerra, 08015, Barcelona, Spain.

Received: 23 January 2019 Accepted: 4 December 2019

Published online: 12 December 2019

References

1. Zale EL, Lange KL, Fields SA, Ditte JW. The relation between pain-related fear and disability: a meta-analysis. *J Pain*. 2013;14:1019–30.
2. Vos T, Flaxman AD, Naghavi M, Lozano R, Michaud C, Ezzati M, et al. Years lived with disability (YLDs) for 1160 sequelae of 289 diseases and injuries 1990–2010: a systematic analysis for the global burden of disease study 2010. *Lancet*. 2012;380:2163–96.
3. Generalitat de Catalunya, Departament de Salut. Informe 2015 de l'Enquesta de salut de Catalunya (ESCA). ESCA. 2016;99. http://salutweb.gencat.cat/web/content/_departament/estadistiques-sanitaries/enquestes/Enquesta-de-salut-de-Catalunya/Resultats-de-lenquesta-de-salut-de-Catalunya/documents/esca_2015.pdf. Accessed 26 Aug 2019.
4. Marin TJ, Van Eerd D, Irvin E, Cocuban R, Malmivaara A, et al. Multidisciplinary biopsychosocial rehabilitation for chronic low back pain. *Cochrane Database Syst Rev*: Koes BW; 2017.
5. Fernández-De-Las-Peñas C, Alonso-Blanco C, Hernández-Barrera V, Palacios-Ceña D, Jiménez-García R, Carrasco-Garrido P. Has the prevalence of neck pain and low back pain changed over the last 5 years? A population-based national study in Spain. *Spine J*. 2013;13:1069–76.
6. Foster N, Anema J, Cherkin D. al. Et. Prevention and treatment of low back pain: evidence, challenges, and promising directions. *Lancet*. 2018; 6736:1–16.

7. Kovacs FM, Fernandez C, Cordero A, Muriel A, Gonzalez-Lujan L, Gil del Real MT. Non-specific low back pain in primary care in the Spanish National Health Service: a prospective study on clinical outcomes and determinants of management *BMC Health Serv Res*. 2006;6:57.
8. Richmond H, Hall AM, Copsey B, Hansen Z, Williamson E, Hoxey-Thomas N, et al. The effectiveness of cognitive behavioural treatment for non-specific low back pain: a systematic review and meta-analysis. *PLoS One*. 2015;10:1–20.
9. Anthony Delitto, PT, PhD, Steven Z. George, PT, PhD, Linda Van Dillen, PT, PhD, Julie M. Whitman, PT, DSc, Gwendolyn A. Sowa, MD P. Low Back Pain. *J Orthop Sport Phys Ther*. 2012.
10. Qaseem A, Wilt TJ, McLean RM, Forciea MA. Noninvasive treatments for acute, subacute, and chronic low back pain: a clinical practice guideline from the American College of Physicians. *Ann Intern Med*. 2017;166:514–30.
11. Kovacs FM, Abaira V, Zamora J, Fernández C. The transition from acute to subacute and chronic low back pain. *Spine (Phila Pa 1976)*. 2005;30:1786–92.
12. Rodriguez-Blanco T, Fernandez-San-Martin I, Balague-Corbella M, Berenguer A, Moix J, Montiel-Morillo E, et al. Study protocol of effectiveness of a biopsychosocial multidisciplinary intervention in the evolution of non-specific sub-acute low back pain in the working population: cluster randomised trial. *BMC Health Serv Res*. 2010;10:12.
13. National Institute for Health and Clinical Excellence (NICE). Low back pain: Early management of persistent non-specific low back pain. *Heal San Fr*. 2009.
14. Kovacs FM, Abaira V, Zamora J, Fernandez C. The transition from acute to subacute and chronic low back pain: a study based on determinants of quality of life and prediction of chronic disability. *Spine*. 2005.
15. Bordas JM, Forcada J, Garcla JA, Joaniquet FX, Pellisé F, Mazeres O, et al. *Guies de pràctica clínica i material docent. Patologia de la columna lumbar en l'adult*. Institut Català de la Salut: Barcelona; 2004.
16. Kovacs F. *El Manual de la Espalda*. Palma de Mallorca: Fundació Kovacs; 2002.
17. Kovacs FM, Royuela A. The Efficacy of a Short Education Program and a Short Physiotherapy Program for Treating Low Back Pain in Primary Care A Cluster Randomized Trial The Efficacy of a Short Education Program and a Short Physiotherapy Program for Treating Low Back Pain in Pri. *Spine (Phila Pa 1976)*. 2010;35 July 2016:483–496.
18. Roland M, Morris R. A study of the natural history of back pain. Part I: development of a reliable and sensitive measure of disability in low-back pain. *Spine*. 1983;8:141–4.
19. Kovacs FM, Llobera J, Gil del Real MT, Abaira V, Gestoso M, Fernandez C, et al. Validation of the spanish version of the Roland-Morris questionnaire. *Spine*. 2002.
20. Bombardier C, Hayden J, Beaton DE. Minimal clinically important difference. Low back pain: outcome measures. *J Rheumatol*. 2001;28:431–8.
21. Kovacs FM, Abaira V, Royuela A, Corcoll J, Alegre L, Cano A, et al. Minimal clinically important change for pain intensity and disability in patients with nonspecific low back pain. *Spine*. 2007;32:2915–20.
22. Melzack R. The McGill pain questionnaire: major properties and scoring methods. *Pain*. 1975;1:277–99.
23. Bejarano PF, Noriego RD, Rodriguez ML, Berrio GM. Evaluación del dolor: adaptación del cuestionario de Mc Gill. *Rev Col Anest*. 1985;13:321–51.
24. Luo X, George ML, Kakouras I, Edwards CL, Pietrobon R, Richardson W, et al. Ovid: Reliability, Validity, and Responsiveness of the Short Form 12-Item Survey (SF-12) in Patients With Back Pain. *Spine (Phila Pa 1976)*. 2003;28: 1739–45.
25. Ukoumunne OC, Gulliford MC, Chinn S, Sterne JA, Burney PG. Methods for evaluating area-wide and organisation-based interventions in health and health care: a systematic review. *Heal Technol Assess*. 1999;3:iii–92.
26. White IR, Royston P, Wood AM. Multiple imputation using chained equations: issues and guidance for practice. *Stat Med*. 2011;30:377–99.
27. Graham JW. Missing data: Analysis and design. New York, NY: Springer. In: *Missing Data Analysis Design*. 2016. p. C2012;2012.
28. Lee KJ, Simpson JA. Introduction to multiple imputation for dealing with missing data. *Respirology*. 2014;19:162–7.
29. Wiley J. Multiple imputation for nonresponse in surveys. 1987.
30. Smeets R, Köke A, Lin CW, Ferreira M, Demoulin C. Measures of function in low Back pain/disorders: low Back pain rating scale (LBPRS), Oswestry disability index (ODI), progressive Isoinertial lifting evaluation (PILE), Quebec Back pain disability scale (QBPDS), and Roland-Morris disability questionnaire. *Arthritis Care Res*. 2011;63(SUPPL. 11):158–73.
31. van Middelkoop M, Rubinstein SM, Verhagen AP, Ostelo RW, Koes BW, van Tulder MW. Exercise therapy for chronic nonspecific low-back pain. *Best Pract Res Clin Rheumatol*. 2010;24:193–204.
32. Fritz JM, Magel JS, McFadden M, Asche C, Thackeray A, Meier W, et al. Early physical therapy vs usual care in patients with recent-onset low back pain: a randomized clinical trial. *JAMA - J Am Med Assoc*. 2015;314:1459–67.
33. Stefane T, dos Santos A, Marinovic A. Chronic low back pain : pain intensity , disability and quality of life. *Acta Paul Enferm*. 2013;26:14–20.
34. Klemenc-Ketis Z. Predictors of health-related quality of life and disability in patients with chronic non-specific low back pain. *Zdr Vestn*. 2011;80:379–85.
35. Korovessis P, Repantis T, Zacharatos S, Baikousis A. Low back pain and sciatica prevalence and intensity reported in a Mediterranean country: ordinal logistic regression analysis. *Orthop*. 2012;35:e1775–84.
36. Chou R, Shekelle P. Will this patient develop persistent disability low back pain? *Jama*. 2010;303:1295–302.
37. Cherkin DC, Sherman KJ, Balderson BH, Cook AJ, Anderson ML, Hawkes RJ, et al. Effect of mindfulness-based stress reduction vs cognitive behavioral therapy or usual care on back pain and functional limitations in adults with chronic low back pain: a randomized clinical trial. *JAMA - J Am Med Assoc*. 2016;315:1240–9.
38. Choi BKL, Verbeek JH, Tam WWS, Jiang JY. Exercises for prevention of recurrences of low-back pain. *Occup Environ Med*. 2010;67:795–6.
39. Kindermans HPJ, Huijnen IPJ, Goossens MEJB, Roelofs J, Verbunt JA, Vlaeyen JWS. “Being” in pain: the role of self-discrepancies in the emotional experience and activity patterns of patients with chronic low back pain. *Pain*. 2011;152:403–9.
40. Heneweer H, Vanhees L, Picavet HSJ. Physical activity and low back pain: a U-shaped relation? *Pain*. 2009;143:21–5. <https://doi.org/10.1016/j.pain.2008.12.033>.
41. Lin CWC, McAuley JH, MacEdo L, Barnett DC, Smeets RJ, Verbunt JA. Relationship between physical activity and disability in low back pain: a systematic review and meta-analysis. *Pain*. 2011;152:607–13.

Publisher's Note

Springer Nature remains neutral with regard to jurisdictional claims in published maps and institutional affiliations.

Ready to submit your research? Choose BMC and benefit from:

- fast, convenient online submission
- thorough peer review by experienced researchers in your field
- rapid publication on acceptance
- support for research data, including large and complex data types
- gold Open Access which fosters wider collaboration and increased citations
- maximum visibility for your research: over 100M website views per year

At BMC, research is always in progress.

Learn more biomedcentral.com/submissions

