

Acta Crystallographica Section E

Structure Reports

Online

ISSN 1600-5368

(3a*R*,8a*S*,9*S*,9a*R*)-9-Hydroxyperhydrofuro[3,2-*f*]indolizin-6-oneĽubomír Švorc,^a Viktor Vrábek,^{a*} Jozefína Žúžiová,^b Štefan Marchalín^b and Jozef Kožíšek^c^aInstitute of Analytical Chemistry, Faculty of Chemical and Food Technology, Slovak Technical University, Radlinského 9, SK-812 37 Bratislava, Slovak Republic 81237,^bInstitute of Organic Chemistry, Catalysis and Petrochemistry, Faculty of Chemical and Food Technology, Slovak Technical University, Radlinského 9, SK-812 37 Bratislava, Slovak Republic 81237, and ^cInstitute of Physical Chemistry and Chemical

Physics, Faculty of Chemical and Food Technology, Slovak Technical University, Radlinského 9, Bratislava, Slovak Republic 81237

Correspondence e-mail: viktor.vrabel@stuba.sk

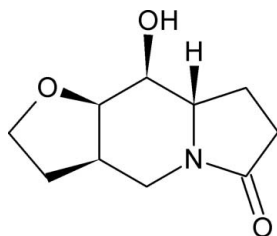
Received 27 May 2009; accepted 24 June 2009

Key indicators: single-crystal X-ray study; $T = 298$ K; mean $\sigma(\text{C}-\text{C}) = 0.002$ Å; R factor = 0.032; wR factor = 0.088; data-to-parameter ratio = 10.4.

In the title compound, $\text{C}_{10}\text{H}_{15}\text{NO}_3$, the central six-membered ring of the indolizine system adopts a chair conformation, while the oxopyrrolidine and hydrofuran rings attached to the indolizine ring system have envelope conformations. In the crystal, the molecules form chains parallel to the b axis via intermolecular $\text{O}-\text{H}\cdots\text{O}$ hydrogen bonds. The absolute configuration was assigned from the synthesis.

Related literature

For general properties of indolizines see: Gundersen *et al.* (2007); Sundaram *et al.* (2007); Mikael (1999); Pyne (2005); Karanjule *et al.* (2006); Chaudhari *et al.* (2006); Martin *et al.* (2005). For the synthesis of the title compound see: Šafář *et al.* (2008). For related structures, see: Vrábek *et al.* (2004); Švorc *et al.* (2009). Camus *et al.* (2003) For puckering parameters, see: Cremer & Pople (1975).



Experimental

Crystal data

$\text{C}_{10}\text{H}_{15}\text{NO}_3$
 $M_r = 197.23$
 Monoclinic, $P2_1$

$a = 6.2856$ (1) Å
 $b = 6.4521$ (1) Å
 $c = 11.7698$ (2) Å

$\beta = 98.631$ (2)°
 $V = 471.92$ (1) Å³
 $Z = 2$
 Mo $K\alpha$ radiation

$\mu = 0.10$ mm⁻¹
 $T = 298$ K
 $0.45 \times 0.29 \times 0.04$ mm

Data collection

Oxford Diffraction Gemini R CCD diffractometer
 Absorption correction: analytical (Clark & Reid, 1995)
 $T_{\min} = 0.962$, $T_{\max} = 0.996$

12197 measured reflections
 1359 independent reflections
 1151 reflections with $I > 2\sigma(I)$
 $R_{\text{int}} = 0.024$

Refinement

$R[F^2 > 2\sigma(F^2)] = 0.032$
 $wR(F^2) = 0.088$
 $S = 1.09$
 1359 reflections
 131 parameters
 1 restraint

H atoms treated by a mixture of independent and constrained refinement
 $\Delta\rho_{\max} = 0.18$ e Å⁻³
 $\Delta\rho_{\min} = -0.12$ e Å⁻³

Table 1

Hydrogen-bond geometry (Å, °).

| $D-\text{H}\cdots A$ | $D-\text{H}$ | $\text{H}\cdots A$ | $D\cdots A$ | $D-\text{H}\cdots A$ |
|---|--------------|--------------------|-------------|----------------------|
| $\text{O2}-\text{H2A}\cdots\text{O3}^i$ | 0.82 (3) | 2.15 (3) | 2.9233 (19) | 157 (2) |

Symmetry code: (i) $-x + 2, y - \frac{1}{2}, -z + 2$.

Data collection: *CrysAlis CCD* (Oxford Diffraction, 2006); cell refinement: *CrysAlis RED* (Oxford Diffraction, 2006); data reduction: *CrysAlis RED*; program(s) used to solve structure: *SHELXS97* (Sheldrick, 2008); program(s) used to refine structure: *SHELXL97* (Sheldrick, 2008); molecular graphics: *DIAMOND* (Brandenburg, 2001); software used to prepare material for publication: *enCIFer* (Allen *et al.*, 2004).

The authors thank the Grant Agency of the Slovak Republic (grant Nos. 1/0161/08 and 1/0817/08) and the Structural Funds, Interreg IIIA for financial support in purchasing the diffractometer and the Development Agency under contract No. APVV-0210-07.

Supplementary data and figures for this paper are available from the IUCr electronic archives (Reference: BG2263).

References

- Allen, F. H., Johnson, O., Shields, G. P., Smith, B. R. & Towler, M. (2004). *J. Appl. Cryst.* **37**, 335–338.
- Brandenburg, K. (2001). *DIAMOND*. Crystal Impact GbR, Bonn, Germany.
- Camus, F., Norberg, B., Bourry, A., Akué-Gédu, R., Rigo, B. & Durant, F. (2003). *Acta Cryst. E59*, o1002–o1003.
- Chaudhari, V. D., Ajish Kumar, K. S. & Dhavale, D. D. (2006). *Tetrahedron*, **62**, 4354–4359.
- Clark, R. C. & Reid, J. S. (1995). *Acta Cryst. A51*, 887–897.
- Cremer, D. & Pople, J. A. (1975). *J. Am. Chem. Soc.* **97**, 1354–1362.
- Gundersen, L.-L., Charnock, C., Negussie, A. H., Rise, F. & Teklu, S. (2007). *Eur. J. Pharm. Sci.* **30**, 26–35.
- Karanjule, N. S., Markad, S. D., Shinde, V. S. & Dhavale, D. D. (2006). *J. Org. Chem.* **71**, 4667–4670.
- Martin, R., Murruzzu, C., Pericas, M. A. & Riera, A. (2005). *J. Org. Chem.* **70**, 2325–2328.
- Mikael, J. P. (1999). *Nat. Prod. Rep.* **16**, 675–709.
- Oxford Diffraction (2006). *CrysAlis CCD* and *CrysAlis RED*. Oxford Diffraction Ltd, Abingdon, England.
- Pyne, S. G. (2005). *Curr. Org. Synth.* **2**, 39–57.

Šafář, P., Žůžiová, J., Bobošíková, M., Marchalín, Š., Prónayová, N., Dalla, V. & Daich, A. (2008). *Tetrahedron Asymmetry*, **19**, 467–475.
Sheldrick, G. M. (2008). *Acta Cryst. A* **64**, 112–122.
Sundaram, G. S. M., Singh, B., Venkatesh, C., Ila, H. & Junjappa, H. (2007). *J. Org. Chem.* **72**, 5020–5023.

Švorc, Ľ., Vrábek, V., Žůžiová, J., Bobošíková, M. & Kožíšek, J. (2009). *Acta Cryst. E* **65**, o895–o896.
Vrábek, V., Kožíšek, J., Langer, V., Marchalín, Š. & Szemes, F. (2004). *Acta Cryst. E* **60**, o2211–o2213.

supplementary materials

Acta Cryst. (2009). E65, o1731-o1732 [doi:10.1107/S1600536809024283]

(3a*R*,8a*S*,9*S*,9a*R*)-9-Hydroxyperhydrofuro[3,2-*f*]indolizin-6-one

L. Švorc, V. Vrábek, J. Zúziová, S. Marchalín and J. Kozísek

Comment

Indolizines are electron-rich heterocycles with very low oxidation potential. Functionalized indolizines are common substructures found in biologically important natural products and synthetic pharmaceuticals. Due to the various biological functions associated with this skeleton, it has been frequently employed as a key scaffold in the drug industry (Gundersen *et al.*, 2007). The indolizine derivatives show antibacterial, antiviral, antiherpes, anticancer, antifungal, antihelminthic and insecticidal activity (Sundaram *et al.*, 2007). Indolizine alkaloids are excellent inhibitors of biologically important pathways. These include the binding and processing of glycoproteins, potent glycosidase inhibitory activities (Pyne, 2005), activity against AIDS virus HIV and some carcinogenic cells (Mikael, 1999). Castanospermine (Karanjule *et al.*, 2006), swainsonine (Martin *et al.*, 2005) and lentiginosine (Chaudhari *et al.*, 2006) have shown respective glycosidase and mannosidase inhibitory activities, respectively. While an impressive number of total syntheses of polyhydroxylated indolizines and their non-natural analogues in chiral or racemic forms have been reported, the monohydroxylated indolizines have attracted far less attention.

Based on these facts and in continuation of our interest in developing simple and efficient route for the synthesis of novel monohydroxylated indolizine derivatives, we report here the synthesis, molecular and crystal structure of the title compound, (I). The absolute configuration was established by synthesis and is depicted in the scheme and figure. The expected stereochemistry of atoms C5, C6, C7 and C10 was confirmed as *S*, *S*, *R* and *R*, respectively (Fig. 1). The central six-membered ring is not planar and adopts a chair conformation (Cremer & Pople, 1975). A calculation of least-squares planes shows that this ring is puckered in such a manner that the four atoms C5, C6, C10 and C11 are coplanar to within 0.019 (2) Å, while atoms N1 and C7 are displaced from this plane on opposite sides, with out-of-plane displacements of -0.591 (2) and 0.565 (1) Å, respectively. The oxopyrrolidine and hydrofuran rings are each distorted towards an envelope conformation, with atoms C4 and C10 as the flaps. The displacements of atoms C4 and C10 from the mean planes of the remaining four atoms are 0.316 (2) and 0.642 (2) Å, respectively. The central six-membered N-ring is approximately perpendicular to the hydrofuran ring (dihedral angle between plane defined by atoms C5, C6, C10 and C11 and plane defined by atoms C7, O3, C8 and C9) is 82.2 (1)°. As was mentioned in previous papers (Vrábek *et al.*, 2004; Švorc *et al.*, 2009), the N1—C5 and N1—C11 bonds are approximately equivalent and both are much longer than the N1—C2 bond. Atom N1 is *sp*²-hybridized, as evidenced by the sum of the valence angles around it (357.3 (2)°). These data are consistent with conjugation of the lone-pair electrons on N1 with the adjacent carbonyl, similar to what is observed for amides. Intermolecular O—H...O hydrogen bonds link the molecules of (I) into extended chains, which run parallel to the *b* axis (Fig. 2) and help to stabilize the crystal structure of the compound. Atom O2 participates as acceptor and atom O3 as donor in these intermolecular hydrogen bonds. Bond lengths and angles in the indolizine ring system are in good agreement with values from the literature (Camus *et al.*, 2003).

Experimental

The title compound (3*aR*,8*aS*,9*S*,9*aR*)-9-hydroxyoctahydrofuro[3,2-*f*]indolizin-6(4*H*)-one was prepared according literature procedures of Šafář *et al.* (2008).

Refinement

Atom H2 was refined isotropically. All other H atoms were positioned geometrically and treated as riding atoms, with C—H distances in the range 0.97 - 0.98 Å and U_{iso} set at $1.2U_{\text{eq}}$ of the parent atom. The absolute configuration could not be reliably determined for this compound using Mo radiation, and has been assigned according to the synthesis; Friedel pairs have been merged.

Figures

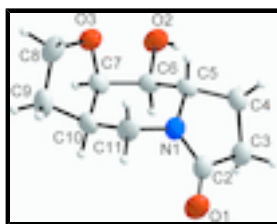


Fig. 1. Molecular structure of (I) with the atomic numbering scheme. Displacement ellipsoids are drawn at the 50% probability level (Brandenburg, 2001).

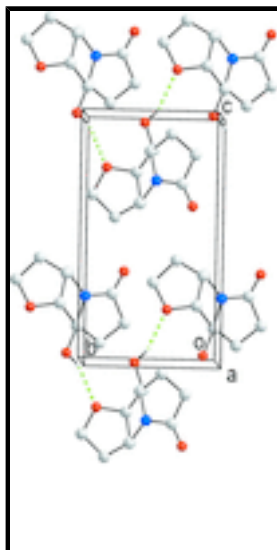


Fig. 2. Packing view of (I), projected along a and showing the formation of chains running along b.

(3*aR*,8*aS*,9*S*,9*aR*)-9-Hydroxyperhydrofuro[3,2-*f*]indolizin-6-one

Crystal data

$\text{C}_{10}\text{H}_{15}\text{NO}_3$

$M_r = 197.23$

Monoclinic, $P2_1$

Hall symbol: P 2yb

$F_{000} = 212$

$D_x = 1.388 \text{ Mg m}^{-3}$

Mo $K\alpha$ radiation, $\lambda = 0.71073 \text{ \AA}$

Cell parameters from 7268 reflections

| | |
|-----------------------------------|-----------------------------------|
| $a = 6.28560$ (10) Å | $\theta = 3.2\text{--}29.4^\circ$ |
| $b = 6.45210$ (10) Å | $\mu = 0.10$ mm ⁻¹ |
| $c = 11.7698$ (2) Å | $T = 298$ K |
| $\beta = 98.631$ (2)° | Block, white |
| $V = 471.923$ (13) Å ³ | $0.45 \times 0.29 \times 0.04$ mm |
| $Z = 2$ | |

Data collection

| | |
|--|--|
| Oxford Diffraction Gemini R CCD diffractometer | 1359 independent reflections |
| Radiation source: fine-focus sealed tube | 1151 reflections with $I > 2\sigma(I)$ |
| Monochromator: graphite | $R_{\text{int}} = 0.024$ |
| Detector resolution: 10.4340 pixels mm ⁻¹ | $\theta_{\text{max}} = 29.5^\circ$ |
| $T = 298$ K | $\theta_{\text{min}} = 3.5^\circ$ |
| Rotation method data acquisition using ω and ϕ scans | $h = -8 \rightarrow 8$ |
| Absorption correction: analytical (Clark & Reid, 1995) | $k = -8 \rightarrow 8$ |
| $T_{\text{min}} = 0.962$, $T_{\text{max}} = 0.996$ | $l = -16 \rightarrow 16$ |
| 12197 measured reflections | |

Refinement

| | |
|--|--|
| Refinement on F^2 | Secondary atom site location: difference Fourier map |
| Least-squares matrix: full | Hydrogen site location: inferred from neighbouring sites |
| $R[F^2 > 2\sigma(F^2)] = 0.032$ | H atoms treated by a mixture of independent and constrained refinement |
| $wR(F^2) = 0.088$ | $w = 1/[\sigma^2(F_o^2) + (0.0589P)^2 + 0.002P]$ |
| $S = 1.09$ | where $P = (F_o^2 + 2F_c^2)/3$ |
| 1359 reflections | $(\Delta/\sigma)_{\text{max}} < 0.001$ |
| 131 parameters | $\Delta\rho_{\text{max}} = 0.18$ e Å ⁻³ |
| 1 restraint | $\Delta\rho_{\text{min}} = -0.12$ e Å ⁻³ |
| Primary atom site location: structure-invariant direct methods | Extinction correction: none |

Special details

Experimental. (face-indexed; Oxford Diffraction, 2006)

Geometry. All e.s.d.'s (except the e.s.d. in the dihedral angle between two l.s. planes) are estimated using the full covariance matrix. The cell e.s.d.'s are taken into account individually in the estimation of e.s.d.'s in distances, angles and torsion angles; correlations between e.s.d.'s in cell parameters are only used when they are defined by crystal symmetry. An approximate (isotropic) treatment of cell e.s.d.'s is used for estimating e.s.d.'s involving l.s. planes.

Refinement. Refinement of F^2 against ALL reflections. The weighted R -factor wR and goodness of fit S are based on F^2 , conventional R -factors R are based on F , with F set to zero for negative F^2 . The threshold expression of $F^2 > \sigma(F^2)$ is used only for calculating R -

supplementary materials

factors(gt) *etc.* and is not relevant to the choice of reflections for refinement. *R*-factors based on F^2 are statistically about twice as large as those based on F , and *R*-factors based on ALL data will be even larger.

Fractional atomic coordinates and isotropic or equivalent isotropic displacement parameters (\AA^2)

| | <i>x</i> | <i>y</i> | <i>z</i> | $U_{\text{iso}}^*/U_{\text{eq}}$ |
|------|------------|--------------|--------------|----------------------------------|
| C2 | 0.4873 (3) | 0.2817 (3) | 0.72325 (14) | 0.0411 (4) |
| C3 | 0.4877 (3) | 0.1873 (3) | 0.84157 (15) | 0.0459 (4) |
| H3B | 0.3467 | 0.1332 | 0.8494 | 0.055* |
| H3A | 0.5921 | 0.0759 | 0.8550 | 0.055* |
| C4 | 0.5484 (3) | 0.3645 (3) | 0.92481 (13) | 0.0387 (4) |
| H4B | 0.6470 | 0.3177 | 0.9912 | 0.046* |
| H4A | 0.4216 | 0.4225 | 0.9506 | 0.046* |
| C5 | 0.6564 (2) | 0.5248 (3) | 0.85636 (11) | 0.0332 (3) |
| H5A | 0.6105 | 0.6647 | 0.8742 | 0.040* |
| C6 | 0.9007 (2) | 0.5135 (3) | 0.87248 (12) | 0.0344 (3) |
| H6A | 0.9426 | 0.3684 | 0.8650 | 0.041* |
| C7 | 0.9925 (2) | 0.6393 (3) | 0.78316 (14) | 0.0380 (4) |
| H7A | 1.1473 | 0.6117 | 0.7900 | 0.046* |
| C8 | 0.9599 (3) | 0.9602 (3) | 0.69052 (17) | 0.0550 (5) |
| H8B | 1.0849 | 1.0494 | 0.6934 | 0.066* |
| H8A | 0.8315 | 1.0444 | 0.6723 | 0.066* |
| C9 | 0.9646 (3) | 0.7923 (4) | 0.60051 (16) | 0.0532 (5) |
| H9B | 1.1088 | 0.7732 | 0.5823 | 0.064* |
| H9A | 0.8680 | 0.8251 | 0.5306 | 0.064* |
| C10 | 0.8887 (3) | 0.5997 (3) | 0.65890 (13) | 0.0431 (4) |
| H10A | 0.9444 | 0.4726 | 0.6286 | 0.052* |
| C11 | 0.6434 (3) | 0.5962 (3) | 0.64646 (13) | 0.0468 (4) |
| H11B | 0.5898 | 0.7367 | 0.6500 | 0.056* |
| H11A | 0.5847 | 0.5383 | 0.5723 | 0.056* |
| N1 | 0.5732 (2) | 0.4730 (2) | 0.73730 (11) | 0.0396 (3) |
| O1 | 0.4241 (2) | 0.1993 (3) | 0.63124 (11) | 0.0624 (4) |
| O2 | 0.9924 (2) | 0.5850 (2) | 0.98351 (11) | 0.0487 (3) |
| H2A | 0.993 (4) | 0.493 (5) | 1.031 (2) | 0.060 (7)* |
| O3 | 0.9608 (2) | 0.85665 (19) | 0.79966 (10) | 0.0471 (3) |

Atomic displacement parameters (\AA^2)

| | U^{11} | U^{22} | U^{33} | U^{12} | U^{13} | U^{23} |
|-----|-------------|-------------|-------------|--------------|-------------|-------------|
| C2 | 0.0366 (7) | 0.0539 (10) | 0.0319 (7) | -0.0097 (7) | 0.0025 (6) | 0.0024 (7) |
| C3 | 0.0520 (9) | 0.0514 (10) | 0.0339 (8) | -0.0129 (8) | 0.0044 (7) | 0.0047 (7) |
| C4 | 0.0391 (7) | 0.0485 (10) | 0.0291 (7) | -0.0010 (7) | 0.0071 (6) | 0.0031 (7) |
| C5 | 0.0373 (7) | 0.0380 (8) | 0.0242 (6) | 0.0012 (6) | 0.0045 (5) | -0.0003 (6) |
| C6 | 0.0375 (7) | 0.0378 (8) | 0.0263 (7) | 0.0009 (6) | -0.0004 (5) | -0.0011 (7) |
| C7 | 0.0325 (7) | 0.0471 (10) | 0.0345 (8) | 0.0000 (7) | 0.0057 (6) | 0.0001 (7) |
| C8 | 0.0631 (11) | 0.0518 (11) | 0.0482 (10) | -0.0164 (9) | 0.0025 (8) | 0.0130 (9) |
| C9 | 0.0532 (9) | 0.0700 (13) | 0.0378 (9) | -0.0141 (10) | 0.0116 (7) | 0.0122 (9) |
| C10 | 0.0545 (9) | 0.0477 (10) | 0.0290 (7) | -0.0050 (8) | 0.0129 (6) | -0.0009 (7) |

| | | | | | | |
|-----|------------|-------------|------------|-------------|-------------|-------------|
| C11 | 0.0544 (9) | 0.0563 (10) | 0.0271 (7) | -0.0143 (9) | -0.0026 (6) | 0.0087 (8) |
| N1 | 0.0407 (7) | 0.0506 (8) | 0.0255 (6) | -0.0095 (6) | -0.0019 (5) | 0.0053 (6) |
| O1 | 0.0721 (8) | 0.0765 (10) | 0.0357 (6) | -0.0308 (8) | -0.0011 (6) | -0.0067 (7) |
| O2 | 0.0583 (7) | 0.0559 (8) | 0.0275 (6) | -0.0166 (6) | -0.0082 (5) | 0.0040 (6) |
| O3 | 0.0619 (7) | 0.0427 (7) | 0.0362 (6) | -0.0111 (6) | 0.0053 (5) | 0.0005 (6) |

Geometric parameters (Å, °)

| | | | |
|------------|-------------|--------------|-------------|
| C2—O1 | 1.218 (2) | C7—C10 | 1.531 (2) |
| C2—N1 | 1.347 (2) | C7—H7A | 0.9800 |
| C2—C3 | 1.520 (2) | C8—O3 | 1.447 (2) |
| C3—C4 | 1.517 (3) | C8—C9 | 1.519 (3) |
| C3—H3B | 0.9700 | C8—H8B | 0.9700 |
| C3—H3A | 0.9700 | C8—H8A | 0.9700 |
| C4—C5 | 1.530 (2) | C9—C10 | 1.531 (3) |
| C4—H4B | 0.9700 | C9—H9B | 0.9700 |
| C4—H4A | 0.9700 | C9—H9A | 0.9700 |
| C5—N1 | 1.4591 (18) | C10—C11 | 1.527 (2) |
| C5—C6 | 1.5204 (19) | C10—H10A | 0.9800 |
| C5—H5A | 0.9800 | C11—N1 | 1.453 (2) |
| C6—O2 | 1.4238 (17) | C11—H11B | 0.9700 |
| C6—C7 | 1.510 (2) | C11—H11A | 0.9700 |
| C6—H6A | 0.9800 | O2—H2A | 0.82 (3) |
| C7—O3 | 1.433 (2) | | |
| O1—C2—N1 | 125.45 (17) | C6—C7—H7A | 108.9 |
| O1—C2—C3 | 126.54 (18) | C10—C7—H7A | 108.9 |
| N1—C2—C3 | 108.00 (15) | O3—C8—C9 | 106.96 (17) |
| C4—C3—C2 | 104.81 (15) | O3—C8—H8B | 110.3 |
| C4—C3—H3B | 110.8 | C9—C8—H8B | 110.3 |
| C2—C3—H3B | 110.8 | O3—C8—H8A | 110.3 |
| C4—C3—H3A | 110.8 | C9—C8—H8A | 110.3 |
| C2—C3—H3A | 110.8 | H8B—C8—H8A | 108.6 |
| H3B—C3—H3A | 108.9 | C8—C9—C10 | 103.06 (14) |
| C3—C4—C5 | 104.93 (12) | C8—C9—H9B | 111.2 |
| C3—C4—H4B | 110.8 | C10—C9—H9B | 111.2 |
| C5—C4—H4B | 110.8 | C8—C9—H9A | 111.2 |
| C3—C4—H4A | 110.8 | C10—C9—H9A | 111.2 |
| C5—C4—H4A | 110.8 | H9B—C9—H9A | 109.1 |
| H4B—C4—H4A | 108.8 | C11—C10—C9 | 110.32 (16) |
| N1—C5—C6 | 108.57 (12) | C11—C10—C7 | 111.95 (13) |
| N1—C5—C4 | 103.15 (13) | C9—C10—C7 | 100.16 (14) |
| C6—C5—C4 | 114.91 (13) | C11—C10—H10A | 111.3 |
| N1—C5—H5A | 110.0 | C9—C10—H10A | 111.3 |
| C6—C5—H5A | 110.0 | C7—C10—H10A | 111.3 |
| C4—C5—H5A | 110.0 | N1—C11—C10 | 110.56 (13) |
| O2—C6—C7 | 108.67 (13) | N1—C11—H11B | 109.5 |
| O2—C6—C5 | 111.18 (13) | C10—C11—H11B | 109.5 |
| C7—C6—C5 | 111.84 (12) | N1—C11—H11A | 109.5 |
| O2—C6—H6A | 108.4 | C10—C11—H11A | 109.5 |

supplementary materials

| | | | |
|---------------|--------------|---------------|--------------|
| C7—C6—H6A | 108.4 | H11B—C11—H11A | 108.1 |
| C5—C6—H6A | 108.4 | C2—N1—C11 | 124.84 (15) |
| O3—C7—C6 | 110.87 (13) | C2—N1—C5 | 114.01 (14) |
| O3—C7—C10 | 104.17 (14) | C11—N1—C5 | 118.47 (13) |
| C6—C7—C10 | 114.99 (13) | C6—O2—H2A | 110.8 (18) |
| O3—C7—H7A | 108.9 | C7—O3—C8 | 108.27 (13) |
| O1—C2—C3—C4 | -171.33 (18) | O3—C7—C10—C9 | 41.27 (16) |
| N1—C2—C3—C4 | 9.79 (19) | C6—C7—C10—C9 | 162.80 (14) |
| C2—C3—C4—C5 | -19.80 (18) | C9—C10—C11—N1 | -156.02 (15) |
| C3—C4—C5—N1 | 22.25 (17) | C7—C10—C11—N1 | -45.4 (2) |
| C3—C4—C5—C6 | -95.73 (16) | O1—C2—N1—C11 | -12.7 (3) |
| N1—C5—C6—O2 | 173.44 (14) | C3—C2—N1—C11 | 166.20 (16) |
| C4—C5—C6—O2 | -71.68 (18) | O1—C2—N1—C5 | -173.78 (17) |
| N1—C5—C6—C7 | 51.76 (17) | C3—C2—N1—C5 | 5.11 (19) |
| C4—C5—C6—C7 | 166.64 (13) | C10—C11—N1—C2 | -105.48 (18) |
| O2—C6—C7—O3 | -54.82 (17) | C10—C11—N1—C5 | 54.8 (2) |
| C5—C6—C7—O3 | 68.30 (16) | C6—C5—N1—C2 | 104.77 (16) |
| O2—C6—C7—C10 | -172.63 (14) | C4—C5—N1—C2 | -17.57 (17) |
| C5—C6—C7—C10 | -49.52 (19) | C6—C5—N1—C11 | -57.6 (2) |
| O3—C8—C9—C10 | 19.3 (2) | C4—C5—N1—C11 | -179.96 (15) |
| C8—C9—C10—C11 | 82.07 (18) | C6—C7—O3—C8 | -154.92 (13) |
| C8—C9—C10—C7 | -36.05 (18) | C10—C7—O3—C8 | -30.69 (17) |
| O3—C7—C10—C11 | -75.64 (18) | C9—C8—O3—C7 | 7.04 (19) |
| C6—C7—C10—C11 | 45.9 (2) | | |

Hydrogen-bond geometry (\AA , $^\circ$)

| $D-H\cdots A$ | $D-H$ | $H\cdots A$ | $D\cdots A$ | $D-H\cdots A$ |
|---------------------------------|----------|-------------|-------------|---------------|
| O2—H2A \cdots O3 ⁱ | 0.82 (3) | 2.15 (3) | 2.9233 (19) | 157 (2) |

Symmetry codes: (i) $-x+2, y-1/2, -z+2$.

Fig. 1

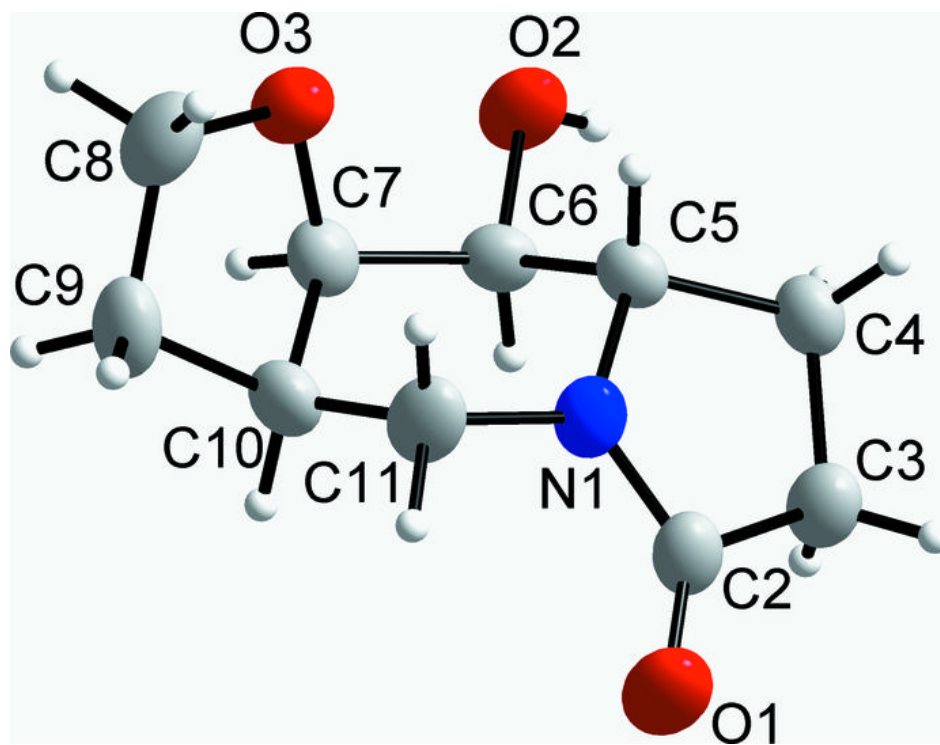


Fig. 2

