

SHORT REPORT

Open Access

Circulation of prions within dust on a scrapie affected farm

Kevin C Gough¹, Claire A Baker², Hugh A Simmons³, Steve A Hawkins³ and Ben C Maddison^{2*}

Abstract

Prion diseases are fatal neurological disorders that affect humans and animals. Scrapie of sheep/goats and Chronic Wasting Disease (CWD) of deer/elk are contagious prion diseases where environmental reservoirs have a direct link to the transmission of disease. Using protein misfolding cyclic amplification we demonstrate that scrapie PrP^{Sc} can be detected within circulating dusts that are present on a farm that is naturally contaminated with sheep scrapie. The presence of infectious scrapie within airborne dusts may represent a possible route of infection and illustrates the difficulties that may be associated with the effective decontamination of such scrapie affected premises.

Introduction, methods and results

Transmissible Spongiform Encephalopathies (TSEs) are a group of fatal neurodegenerative diseases for which there is no effective treatment or cure. Examples of TSE infections affecting mammalian species include scrapie in sheep and goats, bovine spongiform encephalopathy (BSE) in cattle, chronic wasting disease (CWD) in deer and elk, and variant CJD (vCJD) in man. In each case the etiological agent is proposed to be a conformational isomer (PrP^{Sc}) of the host encoded prion protein (PrP^C) [1]. During a prolonged preclinical phase host PrP^C is converted into PrP^{Sc} which accumulates, particularly in the central nervous system, ultimately causing neuronal loss. The conversion of PrP^C to PrP^{Sc} confers several changes in the biochemical properties of the protein, such as a decreased solubility in detergents, and an increase in resistance to proteases and chemical denaturants.

For scrapie and CWD, prions are shed from infected animals via multiple routes and during preclinical and clinical stages of disease. For example, sheep infected with the scrapie prion secrete/excrete prions within faeces [2], saliva [3,4], urine [5] and skin [6]. Furthermore, parturient material is known to harbour high levels of scrapie infectivity [7,8]. The dissemination of this PrP^{Sc} coupled with its high stability leads to environmental reservoirs of infectivity. For example, it is known that premises that have housed scrapie-infected animals

remain a potential source of infectivity for many years [9] and we have demonstrated that scrapie PrP^{Sc} can be detected on a range of surfaces within the farm providing likely sources of prion exposure [10].

Here, we use serial protein misfolding cyclic amplification (sPMCA) to investigate the presence of scrapie PrP^{Sc} within circulating dust material. sPMCA reproduces the prion replication cycle in vitro, to propagate prions with high sensitivity from small amounts of infectious material within a PrP^C "substrate" [11]. Samples were taken within an experimental farm with a high incidence of naturally transmitted scrapie [12]. Lambing was carried out within barns each spring where ewes and lambs were kept for up to a week before going to pasture. Samples were collected from within buildings and pasture that had not been used for holding animals for at least 12 months prior to sample collection. In addition, analogous samples were collected from a scrapie free environment (ARSU scrapie free sheep unit). This flock was maintained under a high level of biological containment to ensure that all animals were free from classical scrapie. Swab samples of surfaces were taken from areas within the scrapie affected barn that were inaccessible to sheep (horizontal and vertical surfaces at heights above 1.5 m) using a wetted foam swab (VWR). Briefly, swabs were moistened in sterile water and then an area of approximately 20 cm² swabbed by passing the swab 10 times over the same area with each side of the swab. Four swabs were collected from each area sampled. In addition, samples of dust were taken that had collected in sterile petri-dishes over a 10-week period. For the scrapie affected farm, dust samples were taken from two barns

* Correspondence: ben.maddison@adas.co.uk

²ADAS UK, School of Veterinary Medicine and Science, The University of Nottingham, Sutton Bonington, Loughborough, Leicestershire LE12 5RD, UK
Full list of author information is available at the end of the article

that had previously housed scrapie affected animals, and from two barns that had never housed animals; one was used for storing equipment and the other for storing hay, these latter two barns were at least 50 m from the barns where animals had been housed. Dishes were contained within 10 mm mesh cages in order to prevent possible contamination by contact with birds and/or rodents, and collected dust at both floor level and a height of ~1 m. Similarly, to investigate the possibility that scrapie containing dust is circulated within pasture, two open ended polytunnels were set up at 30 m and 60 m from the open ends of the barns that had previously contained sheep. Within these, open petri dishes collected dust that settled within the pasture over this same 10-week duration.

Two swabs were used to sample all dust from a single petri dish. For swabs used to sample either petri dishes or directly sample surfaces on the farms, two swabs from the same sampling area or petri dish, were extracted into a phosphate buffer, and recovered using silicon dioxide as previously described [10]. When analysing the presence/absence of PrP^{Sc} in swabs of dust samples or from fomite surfaces, individual extracts (from 2 pooled swabs) were analysed. sPMCA was carried out within a 10% (w/v) sheep brain homogenate (VRQ/VRQ *Prnp* genotype at residues 136, 154 and 171) exactly as described previously [10]. Samples were subject to a total of 8 (surface swab samples) or 9 (dust samples) rounds of sPMCA. Amplification products were digested with 50 µg/mL proteinase K and resolved on a 12% SDS-PAGE gel and western blotted with detection of PrP^{Sc} by monoclonal antibody SHa31 as previously described [10]. Alternatively, dot blots were carried out by application of 2.5 µL digested amplified product that had been denatured in LDS, to a nitrocellulose membrane. Blocking, washing and immuno-labelling steps were carried out as for the western blot.

sPMCA analysis of swabs taken from surfaces that could not have been in direct contact from animals (horizontal and vertical surfaces above 1.5 m) demonstrated that

sPMCA seeding activity could be detected (Figure 1). All areas sampled from the scrapie affected farm (6 extracts) seeded sPMCA amplification (total of 15/30 reactions) whereas for analogous samples collected from the scrapie free farm (3 extracts) only 1/18 reactions were positive. This observation suggested that dusts accumulating within buildings that have housed scrapie infected sheep (even when this was over 12 months previously) may contain scrapie prions. However, from these samples alone it cannot be ruled out that these surfaces were contaminated by direct deposition of saliva. In order to confirm that dust did harbour PrP^{Sc}, dust collected on the sterile petri dishes from the scrapie affected farm were also analysed and were indeed found to seed sPMCA reactions even though the dust was collected over just 10 weeks (Figure 2, Table 1). Dusts collected from 5 different areas within 2 barns that had previously housed animals all supported sPMCA amplification (12 out of 25 reactions); in addition no scrapie PrP^{Sc} was detected within dust samples from two additional open barns that had no history of housing animals within this farm. For samples of dust within pasture, those that were collected 30 m from the scrapie positive buildings showed sPMCA positivity at a rate of 6/10 reactions, whereas there were no samples that were positive in those collected 60 m away from the buildings (0/10 reactions). Four analogous dust samples collected from barns that had housed sheep on a scrapie free farm did not support the amplification of scrapie PrP^{Sc} (0/20 amplifications). Overall the levels of sPMCA positivity from the dust samples collected within the scrapie affected farm are significantly different ($p \leq 0.005$) from those reactions that used the control dust collected from the scrapie free farm (2-tailed Fishers exact test). A semi-quantitative assessment of sPMCA seeding activity within dust samples collected within petri dishes was also carried out. We determined the sPMCA rounds where both dilutions of scrapie brain homogenate and the positive dust samples were positive as described by Haley et al. [13]. Equivalent amounts of scrapie brain homogenate that were positive

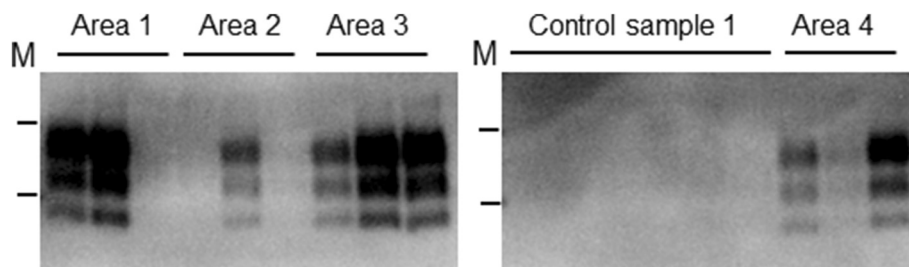


Figure 1 sPMCA analysis of dust samples. Example sPMCA western blot from dust samples taken from four surfaces (Area 1, 2, 3 and 4), inaccessible to direct contact with sheep, within a scrapie-affected barn were extracted and subject to sPMCA. Control sample 1: represent 6 individual reactions amplifying negative control extracts taken from a scrapie-free barn. PrP^{Sc} was detected using monoclonal antibody SHa31; M are 20 and 30 kDa molecular mass markers. In total 15/30 reactions from the scrapie affected farm were sPMCA positive, whilst 1/18 from the negative samples amplified, and presumed a false positive result.

Competing interests

The authors declare that they have no competing interests.

Authors' contributions

KCG and BCM conceived this study and participated in its design and coordination. CB carried out the extracts and sPMCA experiments. HAS and SAH designed and managed the sample collection. KCG and BCM have written the manuscript with inputs from all authors. All authors read and approved the final manuscript.

Acknowledgements

This work was funded through DEFRA studies SE1863 and SE1865. The funders had no role in the design of the experiments or their interpretation.

Author details

¹School of Veterinary Medicine and Science, The University of Nottingham, Sutton Bonington, Loughborough, Leicestershire LE12 5RD, UK. ²ADAS UK, School of Veterinary Medicine and Science, The University of Nottingham, Sutton Bonington, Loughborough, Leicestershire LE12 5RD, UK. ³Animal and Plant Health Agency, Woodham Lane, New Haw, Addlestone, Surrey KT15 3NB, UK.

Received: 6 November 2014 Accepted: 30 March 2015

Published online: 16 April 2015

References

- Prusiner SB (1998) Prions. *Proc Natl Acad Sci U S A* 95:13363–13383
- Terry LA, Howells L, Bishop K, Baker CA, Everest S, Thorne L, Maddison BC, Gough KC (2011) Detection of prions in the faeces of sheep naturally infected with classical scrapie. *Vet Res* 42:65
- Maddison BC, Rees HC, Baker CA, Taema M, Bellworthy SJ, Thorne L, Terry LA, Gough KC (2010) Prions are secreted into the oral cavity in sheep with preclinical scrapie. *J Infect Dis* 201:1672–1676
- Gough KC, Baker CA, Rees HC, Terry LA, Spiropoulos J, Thorne L, Maddison BC (2012) The oral secretion of infectious scrapie prions occurs in preclinical sheep with a range of PRNP genotypes. *J Virol* 86:566–71
- Rubenstein R, Chang B, Gray P, Piltch M, Bulgin MS, Sorensen-Melson S, Miller MW (2011) Prion disease detection, PMCA kinetics, and IgG in urine from sheep naturally/experimentally infected with scrapie and deer with preclinical/clinical chronic wasting disease. *J Virol* 85:9031–8
- Thomzig A, Schulz-Schaeffer W, Wrede A, Wemheuer W, Brenig B, Kratzel C, Lemmer K, Beekes M (2007) Accumulation of pathological prion protein PrP^{Sc} in the skin of animals with experimental and natural scrapie. *PLoS Pathog* 3:e66
- Pattison IH, Hoare MN, Jebbett JN, Watson WA (1972) Spread of scrapie to sheep and goats by oral dosing with foetal membranes from scrapie-affected sheep. *Vet Rec* 90:465–8
- Touzeau S, Chase-Topping ME, Matthews L, Lajous D, Eyche F, Hunter N, Foster JD, Simm G, Elsen JM, Woolhouse ME (2006) Modelling the spread of scrapie in a sheep flock: evidence for increased transmission during lambing seasons. *Arch Virol* 151:735–51
- Georgsson G, Sigurdarson S, Brown P (2006) Infectious agent of sheep scrapie may persist in the environment for at least 16 years. *J Gen Virol* 87:3737–40
- Maddison BC, Baker CA, Terry LA, Bellworthy SJ, Thorne L, Rees HC, Gough KC (2010) Environmental sources of scrapie prions. *J Virol* 84:11560–2
- Castilla J, Saá P, Soto C (2005) Detection of prions in blood. *Nat Med* 11:982–5
- Dexter G, Tongue SC, Heasman L, Bellworthy SJ, Davis A, Moore SJ, Simmons MM, Sayers AR, Simmons HA, Matthews D (2009) The evaluation of exposure risks for natural transmission of scrapie within an infected flock. *BMC Vet Res* 5:38
- Haley NJ, Mathiason CK, Carver S, Zabel M, Telling GC, Hoover EA (2011) Detection of chronic wasting disease prions in salivary, urinary, and intestinal tissues of deer: potential mechanisms of prion shedding and transmission. *J Virol* 85:6309–18
- Makarava N, Savtchenko R, Alexeeva I, Rohwer RG, Baskakov IV (2012) Fast and ultrasensitive method for quantitating prion infectivity titre. *Nat Commun* 3:741
- Castilla J, Saá P, Hetz C, Soto C (2005) In vitro generation of infectious scrapie prions. *Cell* 121:195–206
- Hawkins SAC, Simmons HA, Gough KC, Maddison BC (2015) Persistence of ovine scrapie infectivity within a farm environment after cleaning and decontamination. *Vet Rec* 176:99
- Hamir AN, Kunkle RA, Richt JA, Miller JM, Greenlee JJ (2008) Experimental transmission of US scrapie agent by nasal, peritoneal, and conjunctival routes to genetically susceptible sheep. *Vet Pathol* 45:7–11
- Denkers ND, Seelig DM, Telling GC, Hoover EA (2010) Aerosol and nasal transmission of chronic wasting disease in cervidized mice. *J Gen Virol* 91:1651–8
- Denkers ND, Hayes-Klug J, Anderson KR, Seelig DM, Haley NJ, Dahmes SJ, Osborn DA, Miller KV, Warren RJ, Mathiason CK, Hoover EA (2013) Aerosol transmission of chronic wasting disease in white-tailed deer. *J Virol* 87:1890–2
- Nichols TA, Spraker TR, Rigg TD, Meyerett-Reid C, Hoover C, Michel B, Bian J, Hoover E, Gidlewski T, Balachandran A, O'Rourke K, Telling GC, Bowen R, Zabel MD, VerCauteren KC (2013) Intranasal inoculation of white-tailed deer (*Odocoileus virginianus*) with lyophilized chronic wasting disease prion particulate complexed to montmorillonite clay. *PLoS One* 8:e62455

Submit your next manuscript to BioMed Central and take full advantage of:

- Convenient online submission
- Thorough peer review
- No space constraints or color figure charges
- Immediate publication on acceptance
- Inclusion in PubMed, CAS, Scopus and Google Scholar
- Research which is freely available for redistribution

Submit your manuscript at
www.biomedcentral.com/submit

