

CORRECTION

Open Access

Correction: PD – L1 immunostaining: what pathologists need to know



Mohammed Akhtar, Sameera Rashid*  and Issam A. Al-Bozom

Correction: Diagn Pathol 16, 94 (2021)
<https://doi.org/10.1186/s13000-021-01151-x>

Following publication of the original article [1], the authors noticed that the Fig. 10 is repeated as Fig. 11, with Fig. 11 being assigned figure number 12, and so on with Fig. 15 being omitted from the paper. Presented here are corrected Figs. 11, 12, 13, 14 and 15. The original article has been updated.

Published online: 11 June 2022

Reference

1. Akhtar M, Rashid S, Al-Bozom IA. PD–L1 immunostaining: what pathologists need to know. *Diagn Pathol.* 2021;16:94. <https://doi.org/10.1186/s13000-021-01151-x>.

The original article can be found online at <https://doi.org/10.1186/s13000-021-01151-x>.

* Correspondence: srashid2@hamad.qa

Department of Laboratory Medicine and Pathology, Hamad Medical Corporation, P.O. Box 3050, Doha, Qatar



© The Author(s). 2022 **Open Access** This article is licensed under a Creative Commons Attribution 4.0 International License, which permits use, sharing, adaptation, distribution and reproduction in any medium or format, as long as you give appropriate credit to the original author(s) and the source, provide a link to the Creative Commons licence, and indicate if changes were made. The images or other third party material in this article are included in the article's Creative Commons licence, unless indicated otherwise in a credit line to the material. If material is not included in the article's Creative Commons licence and your intended use is not permitted by statutory regulation or exceeds the permitted use, you will need to obtain permission directly from the copyright holder. To view a copy of this licence, visit <http://creativecommons.org/licenses/by/4.0/>. The Creative Commons Public Domain Dedication waiver (<http://creativecommons.org/publicdomain/zero/1.0/>) applies to the data made available in this article, unless otherwise stated in a credit line to the data.

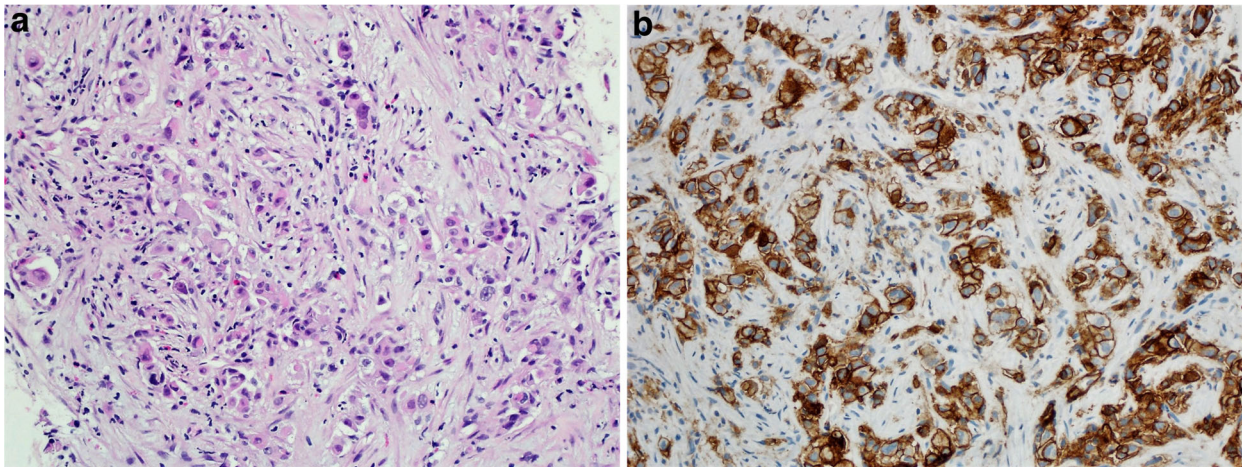


Fig. 11 A Case of metastatic pulmonary adenocarcinoma to the liver. **B** Immunohistochemical staining for tumor cells, moderate to intense staining (2+ – 3+) for PD-L1 TPS: 90 (DAKO 22C3 antibody)

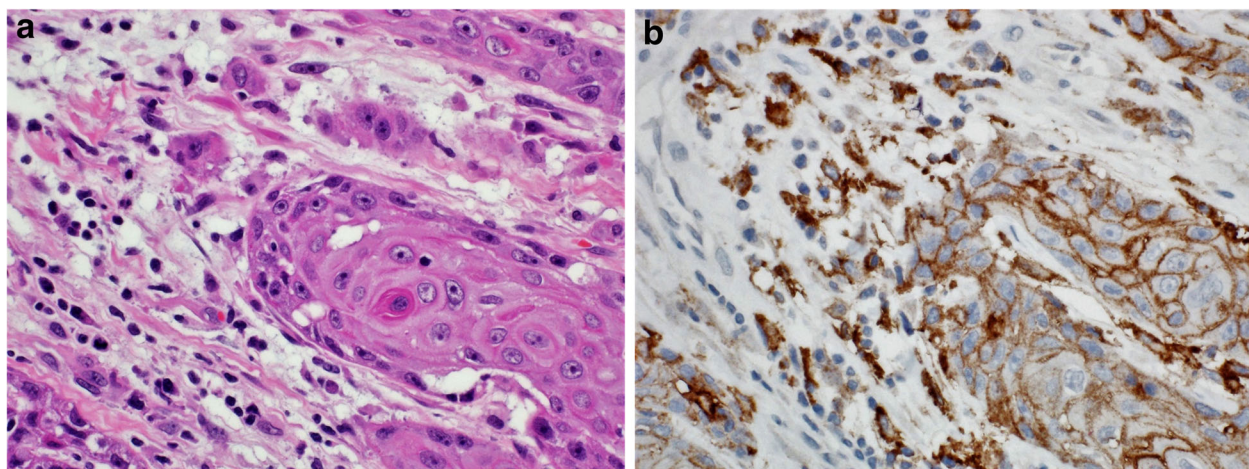


Fig. 12 A Case of buccal mucosa squamous cell carcinoma. **B** Immunohistochemical staining for PD-L1 revealing staining of tumor cells (right side of the figure) and tumor immune cells (left side of the figure), CPS: 90 (DAKO 22C3 antibody)

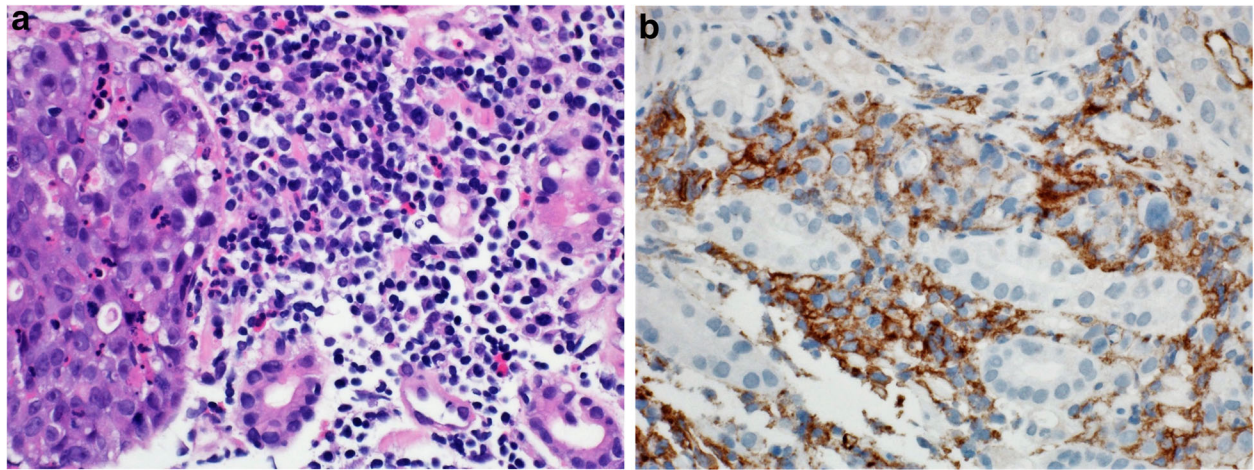


Fig. 13 **A** Case of poorly differentiated gastric adenocarcinoma. **B** Immunohistochemical staining of the tumor showing staining of tumor immune cells while tumor cells are predominantly negative. CPS: 20. (DAKO 22C3 antibody)

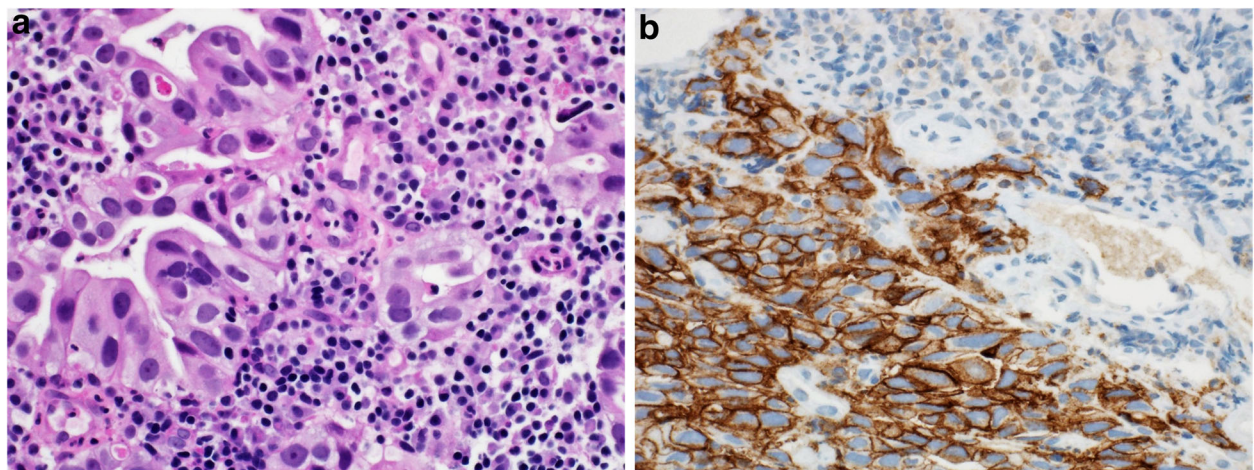


Fig. 14 **A** Case of moderately differentiated gastric adenocarcinoma. **B** Immunohistochemical staining of the tumor in which only tumor cells are positive for PD-L1; while tumor immune cells are negative. CPS: 80. (DAKO 22C3 antibody)

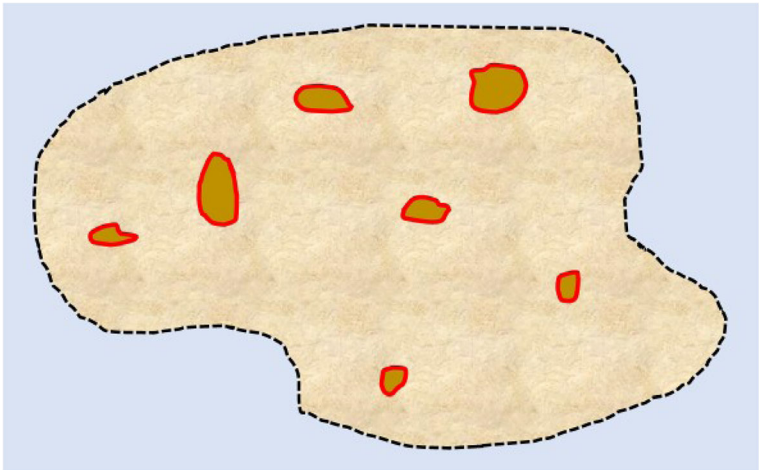


Fig. 15 A diagram depicting expression of PD-L1 positive tumor infiltrating immune cells (marked by red border) in an area of tumor cells (marked by black dotted line). The proportion of tumor area occupied by PD-L1-positive immune cells of any intensity determines the immune cell (IC) score