

## CORRECTION

# Correction: Back to the light, coevolution between vision and olfaction in the “Dark-flies” (*Drosophila melanogaster*)

Ismet Özer, Thomas Carle

The images for all the figures are incorrect. The figure captions are correct and appear in the correct order. Please see the correct Figs 1–5 here.

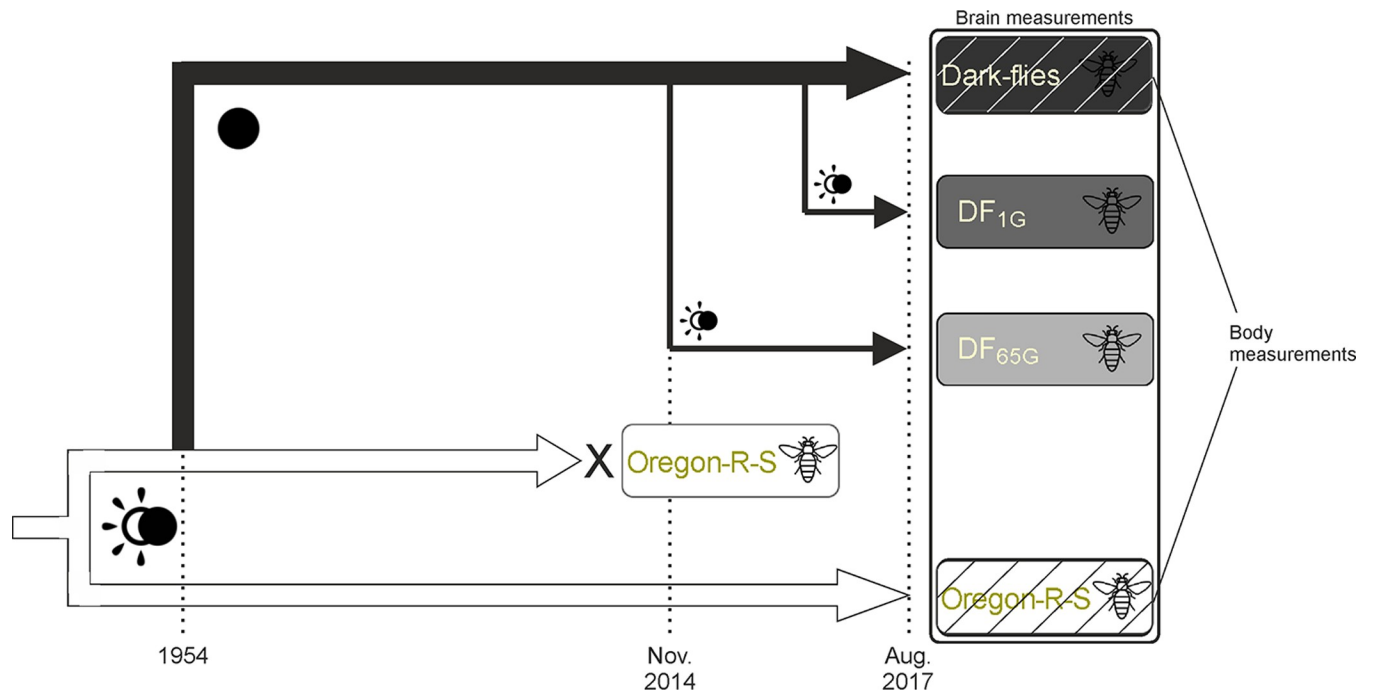


## OPEN ACCESS

**Citation:** Özer I, Carle T (2020) Correction: Back to the light, coevolution between vision and olfaction in the “Dark-flies” (*Drosophila melanogaster*). PLoS ONE 15(11): e0243035. <https://doi.org/10.1371/journal.pone.0243035>

**Published:** November 30, 2020

**Copyright:** © 2020 Özer, Carle. This is an open access article distributed under the terms of the [Creative Commons Attribution License](https://creativecommons.org/licenses/by/4.0/), which permits unrestricted use, distribution, and reproduction in any medium, provided the original author and source are credited.



**Fig 1. Representation of the experimental design and timeline.**

<https://doi.org/10.1371/journal.pone.0243035.g001>

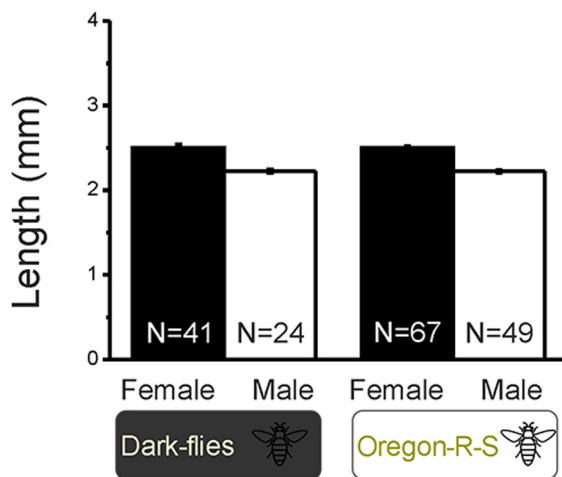
A)



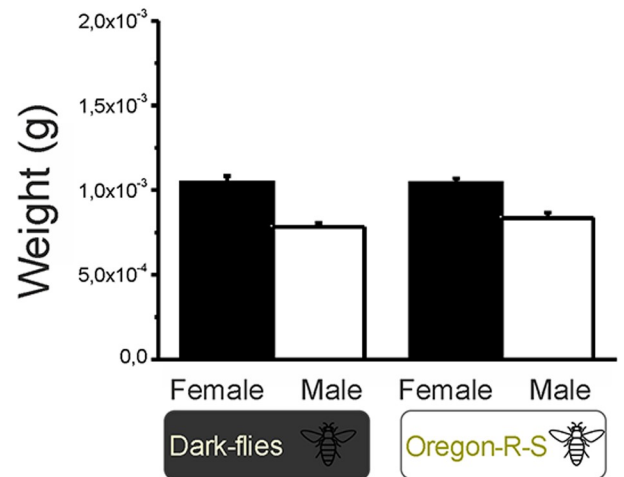
B)



C)

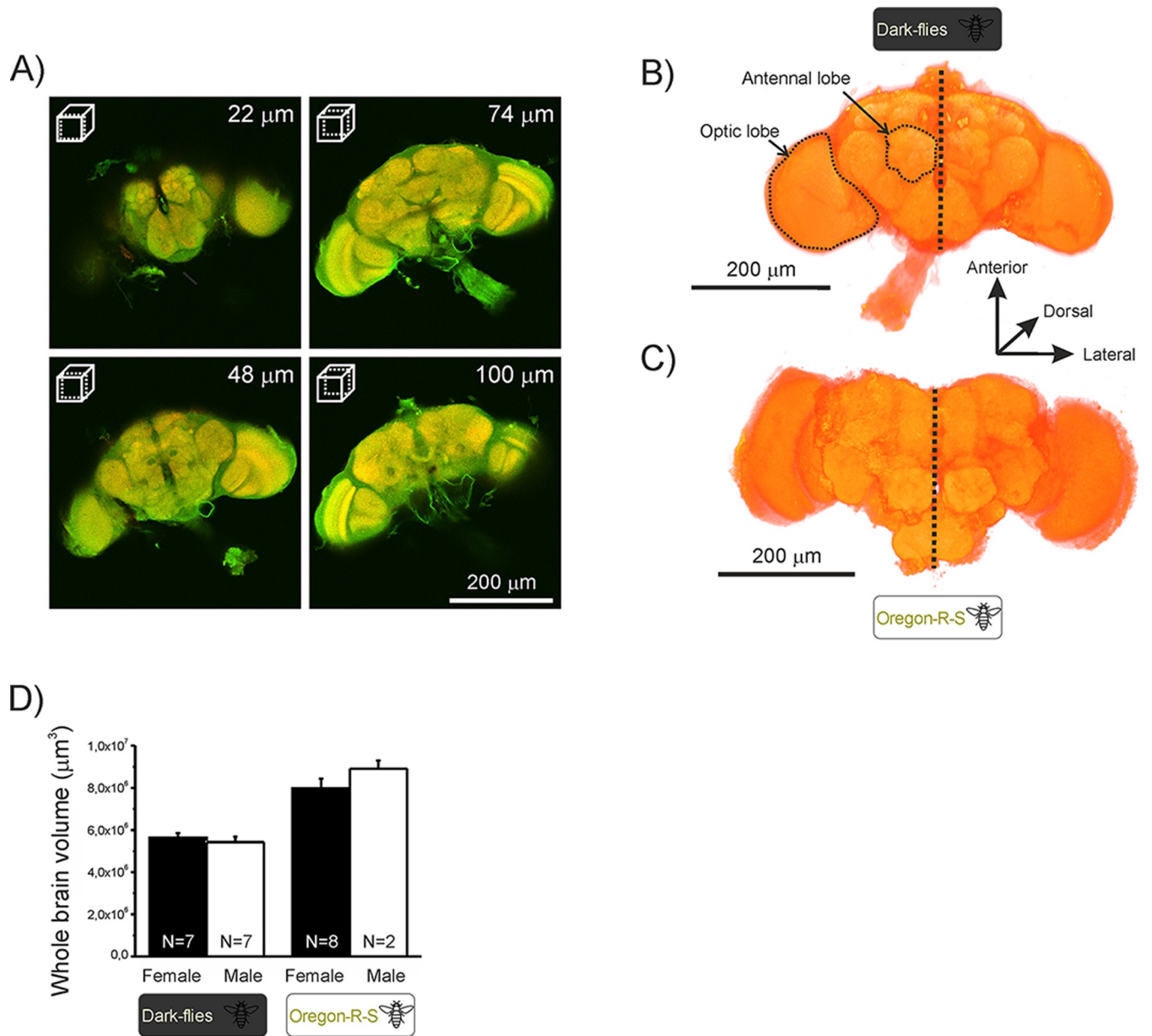


D)



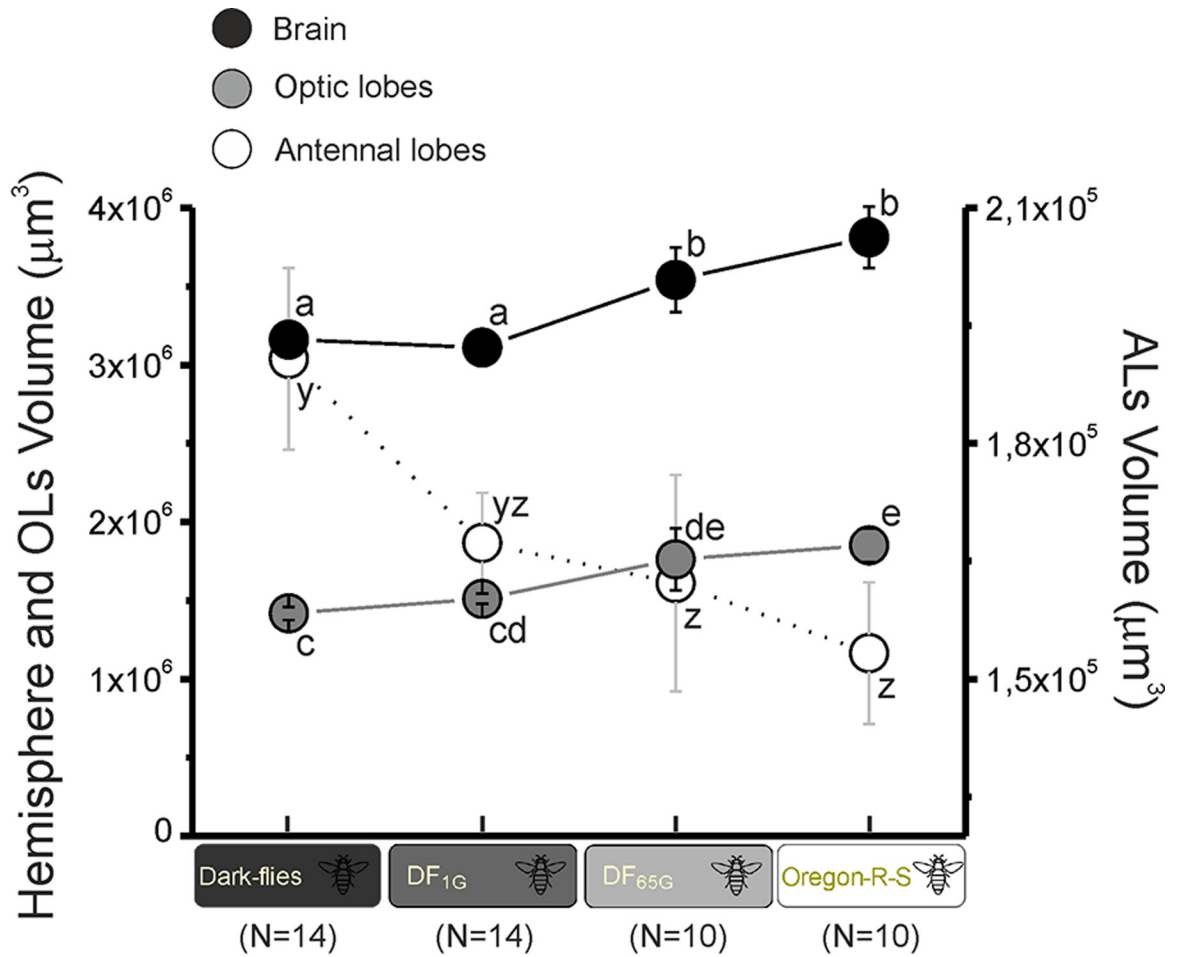
**Fig 2. Images of male (A) and female (B) flies from each strain.** In each image, Dark-flies are on the left, and Oregon flies on the right. The mean (+SEM) length (C) and mass (D) of male and female Oregon flies and Dark-flies.

<https://doi.org/10.1371/journal.pone.0243035.g002>



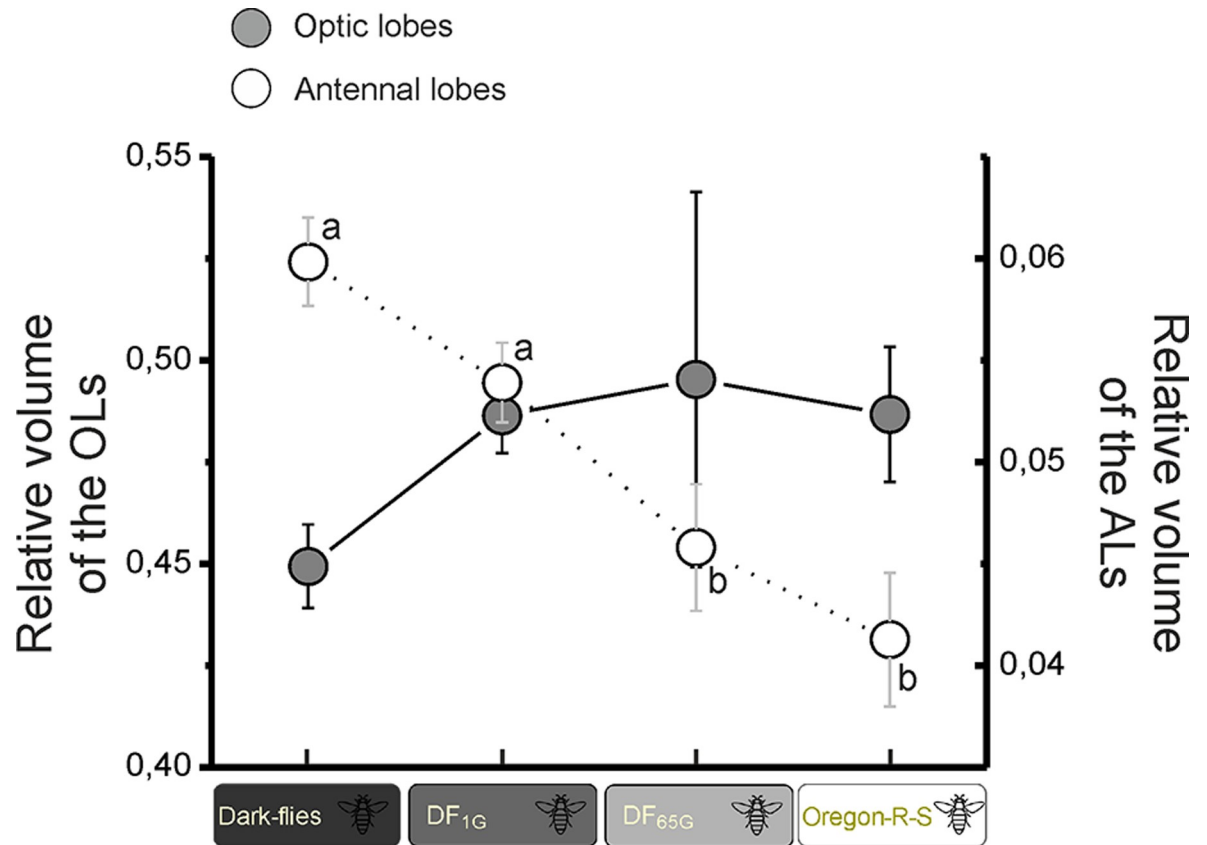
**Fig 3. Flies' brains.** Brain images from a brain of a male Dark-fly showing a series of optical sections from ventral (top left) to dorsal (bottom right) side following a neural axis (A). A 3D representation of a brain of a male Dark-fly (B) and a male Oregon fly (C). The scales and depth location are presented in the figure. The mean (+SEM) size of whole brain (including OLs and ALs) (D) in males and females Oregon and Dark-flies.

<https://doi.org/10.1371/journal.pone.0243035.g003>



**Fig 4. Hemisphere, OLs and ALs absolute sizes.** Absolute volumes ± SEMs of hemisphere (black), OLs (grey) and ALs (white) in Dark-flies, DF<sub>1G</sub>, DF<sub>65G</sub> and Oregon flies. Statistics are represented with letters associated to dots, and significant differences (p<0.05) are represented with different letters.

<https://doi.org/10.1371/journal.pone.0243035.g004>



**Fig 5. OLs and ALs relative sizes.** Mean values of the relative sizes  $\pm$  SEMs of OLs (grey) and ALs (white) in Dark-flies, DF<sub>1G</sub>, DF<sub>65G</sub> and Oregon flies. The number of individuals used is shown in Fig 4. Statistics are represented with letters associated to dots, and significant differences ( $p < 0.05$ ) are represented with different letters.

<https://doi.org/10.1371/journal.pone.0243035.g005>

## Reference

1. Özer I, Carle T (2020) Back to the light, coevolution between vision and olfaction in the “Dark-flies” (*Drosophila melanogaster*). PLoS ONE 15(2): e0228939. <https://doi.org/10.1371/journal.pone.0228939> PMID: [32045466](https://pubmed.ncbi.nlm.nih.gov/32045466/)