





## REVIEW ARTICLE OPEN



# The effectiveness of enhanced evidence-based care for depressive disorders: a meta-analysis of randomized controlled trials

Le Xiao<sup>1,8</sup>, Han Qi<sup>1,8</sup>, Wei Zheng<sup>2,8</sup>, Yu-Tao Xiang<sup>3,4,5</sup>, Thomas J. Carmody<sup>6</sup>, Taryn L. Mayes<sup>7</sup>, Madhukar H. Trivedi<sup>7</sup> and Gang Wang<sup>1</sup>

© The Author(s) 2021

Several care models have been developed to improve treatment for depression, all of which provide “enhanced” evidence-based care (EEC). The essential component of these approaches is Measurement-Based Care (MBC). Specifically, Collaborative Care (CC), and Algorithm-guided Treatment (AGT), and Integrated Care (IC) all use varying forms of rigorous MBC assessment, care management, and/or treatment algorithms as key instruments to optimize treatment delivery and outcomes for depression. This meta-analysis systematically examined the effectiveness of EEC versus usual care for depressive disorders based on cluster-randomized studies or randomized controlled trials (RCTs). PubMed, the Cochrane Library, and PsycInfo, EMBASE, up to January 6th, 2020 were searched for this meta-analysis. The electronic search was supplemented by a manual search. Standardized mean difference (SMD), risk ratio (RR), and their 95% confidence intervals (CIs) were calculated and analyzed. A total of 29 studies with 15,255 participants were analyzed. EEC showed better effectiveness with the pooled RR for response of 1.30 (95%CI: 1.13–1.50,  $I^2 = 81.9%$ ,  $P < 0.001$ , 18 studies), remission of 1.35 (95%CI: 1.11–1.64,  $I^2 = 85.5%$ ,  $P < 0.001$ , 18 studies) and symptom reduction with a pooled SMD of  $-0.42$  (95%CI:  $-0.61$ – $(-0.23)$ ,  $I^2 = 94.3%$ ,  $P < 0.001$ , 19 studies). All-cause discontinuations were similar between EEC and usual care with the pooled RR of 1.08 (95%CI: 0.94–1.23,  $I^2 = 68.0%$ ,  $P = 0.303$ , 27 studies). This meta-analysis supported EEC as an evidence-based framework to improve the treatment outcome of depressive disorders.

**Review registration:** PROSPERO: CRD42020163668

*Translational Psychiatry* (2021)11:531 ; <https://doi.org/10.1038/s41398-021-01638-7>

## INTRODUCTION

Evidence-based care is the use of the best available evidence together with clinical judgement, as well as patient preferences, to make healthcare decisions. Over the past 50 years, several psychotherapies and pharmacological interventions have demonstrated efficacy and safety in the treatment of depressive disorders. Yet remission rates remain low, with only about one-in-three individuals achieving remission in acute treatment trials. In fact, Pence and colleagues estimate that only about 6% of individuals with depression in primary care achieve remission [1]. Clearly, efforts are needed to improve outcomes for depression treatment.

Several care models have been developed to improve treatment for depression, all of which provide “enhanced” evidence-based care (EEC). The essential component of all of these approaches is Measurement-Based Care (MBC). MBC in psychiatry is defined as the use of validated clinical measurement

instruments to objectify the assessment, treatment, and clinical outcomes, including efficacy, safety, tolerability, functioning, and quality of life, in patients with psychiatric disorders [2]. The concept of MBC was derived from the stepwise treatment algorithm by Trivedi et al [3].

Rigorous assessment and treatment algorithms of MBC are regarded as key instruments to optimize treatment delivery and outcomes for MDD [4, 5]. These explicit treatment protocols aim at a predefined treatment goal (e.g., remission or response). Treatment algorithms provide strategies (which treatments to use), tactics (how to implement the treatments), treatment steps (in what order to implement the different treatments), standardized evaluation instruments, critical decision points and standardized medical decisions based on preset “if-then-rules” [6]. Simply put, MBC is “the routine measurement of symptoms and side effects at each treatment visit and the use of a treatment manual describing when and how to modify medication doses based on

<sup>1</sup>The National Clinical Research Center for Mental Disorders & Beijing Key Laboratory of Mental Disorders, Beijing Anding Hospital & the Advanced Innovation Center for Human Brain Protection, Capital Medical University, Beijing, China. <sup>2</sup>Department of Psychiatry, The Affiliated Brain Hospital of Guangzhou Medical University (Guangzhou Huiai Hospital), Guangzhou, China. <sup>3</sup>Unit of Psychiatry, Institute of Translational Medicine, Faculty of Health Sciences, University of Macau, Macao SAR, China. <sup>4</sup>Center for Cognition and Brain Sciences, University of Macau, Macao SAR, China. <sup>5</sup>Institute of Advanced Studies in Humanities and Social Sciences, University of Macau, Macao SAR, China. <sup>6</sup>Department of Population and Data Sciences, University of Texas Southwestern Medical Center, Dallas, Texas, USA. <sup>7</sup>Department of Psychiatry, University of Texas Southwestern Medical Center, Dallas, Texas, USA. <sup>8</sup>These authors contributed equally: Le Xiao, Han Qi, Wei Zheng. ✉email: ytxiang@um.edu.mo; gangwangdoc@cmmu.edu.cn

Received: 25 January 2021 Revised: 13 August 2021 Accepted: 8 September 2021

Published online: 16 October 2021

these measures" [3]. MBC uses patient-reported rating scales in conjunction with evidence-based clinical practice guidelines to provide an objective assessment of patient progress over time to guide a more effective plan of care [7].

Other enhanced evidence-based treatment strategies include Collaborative Care (CC), Integrated Care (IC), and Algorithm-Guided Treatment (AGT), all of which use varying forms of rigorous MBC assessment, care management, and/or treatment algorithms as key instruments to optimize treatment delivery and outcomes for depression. CC and IC integrate assessment, care management, low-intensity psychotherapeutic interventions and antidepressant medication in conformity with evidence-based guidelines [8–10], and also include procedural elements of MBC, and have demonstrated a significant improvement in depressive symptoms. AGT which is standardized stepwise drug treatment regimen (SSTR), has also demonstrated efficacy for MDD [6, 11]. The broad concept of MBC as the systematic evaluation of patient symptoms to inform behavioral health treatment includes the components of CC and IC [12]. Because these strategies all use components of MBC to enhance evidence-based care, we refer to these strategies (MBC, AGT, CC, and IC) as EEC.

Previous studies showed that AGT, MBC, CC, and IC for MDD were superior to treatment as usual (TAU) [6, 11, 13–18]. In addition, a few previous systematic reviews and meta-analyses have been published, but separately reviewed AGT and CC programs and outcomes [10] [19–21], or overviewed MBC for adolescent depression [22]. However, we do not know the overall effectiveness of these four strategies (referred to as EEC hereafter) using measurement, coordinated, and guideline-based care for MDD. To date, no systematic review or meta-analysis has been published to explore the overall effectiveness of such enhanced strategies for adults with MDD. Thus, we performed this meta-analysis of RCTs to systematically evaluate the effectiveness of EEC in depressive disorders.

## MATERIALS AND METHODS

This meta-analysis was conducted following the Preferred Reporting Items for Systematic Reviews and Meta-Analyses (PRISMA) statement [23], with the registration number of No. CRD42020163668.

### Searching strategy

PubMed, the Cochrane Library, PsycInfo, and EMBASE databases were systematically and independently searched by two researchers (LX, HQ) from the inception dates (PubMed:1966, the Cochrane Library: 1995, EMBASE: 1974, PsycInfo: 1872) up to January 6th, 2020. Search terms included: (depressi\*) AND ("measurement-based" OR "algorithm" OR "collaborative care" OR "integrated care"). Relevant reviews were also screened manually for additional studies.

### Study selection and study criteria

The same two researchers independently screened the titles and abstracts of relevant publications and then read the full texts for eligibility. The publications were reported in English. Inclusion criteria were made based on the **PICOS** acronym: **P**articipants: patients with major depressive disorder or other depressive disorders according to study-defined diagnostic criteria. **I**ntervention: AGT, MBC, CC, or IC. **C**omparison: usual care, treatments as usual or standard treatments. **O**utcomes: Primary outcome measure included response and remission defined with any standardized rating scales, such as the Hamilton Depression Rating Scale (HAM-D), Montgomery-Asberg Depression Rating Scale (MADRS), The Symptom Checklist (SCL) or the Beck Depression Inventory (BDI) for depression. If the above-mentioned response and remission were not reported, then study-defined response and remission were included for analyses

(Supplementary Table 1). Key secondary outcomes included 1) the reduction of total scores measured by any rating scales between baseline and endpoint, 2) all-cause discontinuation during the study period. Study design: RCTs and cluster-randomized studies. Exclusion criteria: 1) comorbid physical diseases; 2) special populations, such as children and adolescents; 3) no information of treatment step or strategy.

### Data extraction

The same two researchers independently conducted data extraction. Any disagreement in the procedures was resolved by a discussion or by consulting senior researchers (YTX and WZ).

Relevant study and participant characteristics were recorded using a preprepared data collection sheet. Additional information was obtained by contacting first or corresponding authors if necessary. For studies with cross-over or sequential parallel design, only data in the first randomized study phase prior to treatment change was extracted.

### Quality assessment

Risk of bias (ROB) was assessed using the Cochrane Risk of Bias tool [24], and the JADAD scale [25]. The JADAD scale scored from 0 to 5, with the total score of  $\geq 3$  considered "high quality" [25]. The evidence level and the strength of recommendations of the meta-analysis were measured using the grading of recommendations assessment, development, and evaluation (GRADE) system as recommended by the Cochrane Collaboration [26, 27]. Any disagreement in the procedure was resolved by discussion between the authors (H.Q. and L.X.).

### Statistics

Due to different participant and study characteristics across studies, the random-effects model was used in all analyses. Intent-to-treat (ITT) data were preferred over observed cases data. Standardized mean difference (SMD) and risk ratio (RR) with 95% confidential intervals (CIs) were adopted for continuous and categorical outcomes, respectively. The  $I^2$  [2] statistic was used to assess heterogeneity between studies [28], and significant heterogeneity was defined as  $I^2$  statistics of  $> 50\%$  [28].

Potential sources of heterogeneity for primary and secondary outcomes were examined by subgroup analyses based on the following variables: (i) PHQ-9 vs. SCL vs. others; (ii) trial duration (months):  $\geq 6$  vs.  $< 6$  (6 months was chosen using the weighted mean split of trial duration); (iii) Open label vs. single-blind; (iv) MBC/AGT vs. CC. The moderating effects of JADAD score, mean age, and gender proportion on the results were assessed using meta-regression analysis. Publication bias was tested with funnel plots and the Egger test [29]. Significant level was set as  $P < 0.05$  (two-tailed). Data were analyzed using STATA Version 15.1.

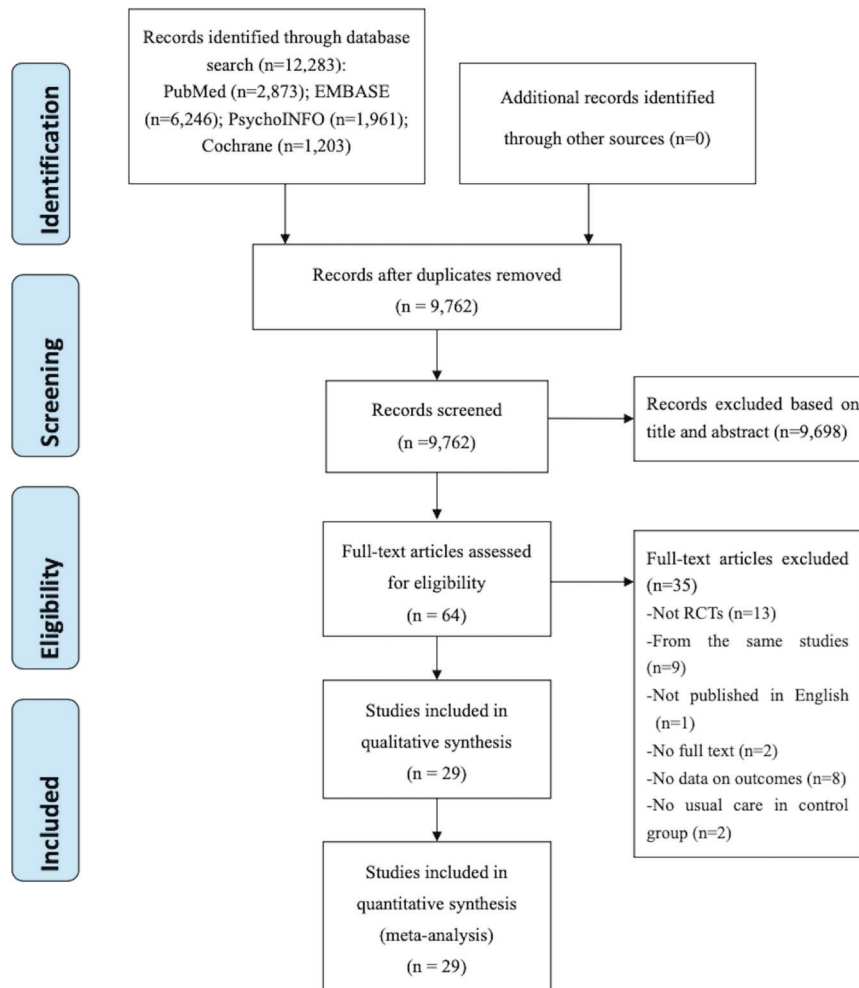
## RESULTS

### Literature search

Altogether, 12,283 relevant publications were identified in the literature search. After removing duplicates, 9762 were assessed by titles and abstracts. Of these, the full texts of 65 papers were read for eligibility. Eventually, 29 studies were included for analysis (Fig. 1).

### Study Characteristics

Study and participant characteristics of the 29 RCTs with a total of 15,255 participants are summarized in Table 1. The mean age of participants was 52.18 (Standard deviation ranged from 6.03 to 17.10) years, and the mean proportion of males was 37.7%. Thirteen studies were conducted in the US, and others were done in Germany (4), Spain (1), UK (6), China (1), Japan (1), Netherlands (2), and Italy (1). Twenty-two studies were based on multi-center and 7 were single-center design. Twenty-one studies used CC, the



**Fig. 1** PRISMA flow diagram of database search results and article selection.

remaining used MBC or AGT, and no IC studies were eligible for inclusion criteria.

### Quality assessment

The mean JADAD score of included studies was 2.63, with 20 (68.7%) studies rated as “high quality ( $\geq 3$ )” (Table 1). Twenty-one (72.4%) studies described the method of randomization, but none used double blind randomization. The Cochrane risk of bias of the 29 studies is presented in Supplementary Table 2. Twenty-one studies had low risk for random sequence generation, 16 had unclear risks for allocation concealment, and nine had high risks for the blinding of participants and personnel. GRADE evaluation found that all the primary and secondary outcomes had a moderate level of recommendation because of serious inconsistency between studies (Supplementary Table 3).

### The effects of EEC on MDD

The results showed that compared to controls, EEC could effectively improve response rate with the pooled RR of 1.30 (95%CI: 1.13–1.50,  $I^2 = 81.9\%$ ,  $P < 0.001$ , 18 studies), and remission rate with the RR of 1.35 (95%CI: 1.11–1.64,  $I^2 = 85.5\%$ ,  $P < 0.001$ , 18 studies) (Figs. 2A and B). Compared to controls, the scores of standardized scales decreased significantly more during the study period in the EEC group with a SMD of  $-0.42$  (95%CI:  $-0.61$ – $-0.23$ ),  $I^2 = 94.3\%$ ,  $P < 0.001$ , 19 studies) (Fig. 2C). No group difference in discontinuation rate was found with the pooled RR of 1.08 (95%CI: 0.94–1.23,  $I^2 = 68.0\%$ ,  $P = 0.303$ , 27 studies) (Fig. 2D).

### Subgroup and meta-regression analyses

Subgroup analyses were performed to explore the sources of heterogeneity for response rate, remission rate and changes of scale scores during the study period (Table 2). With respect of response rate comparing EEC with TAU, studies using the PHQ-9 (RR: 1.28, 95%CI: 1.10–1.50,  $I^2 = 69.6\%$ ,  $P = 0.002$ ) and SCL (RR: 1.60, 95%CI: 1.24–2.05,  $I^2 = 78.8\%$ ,  $P < 0.001$ ) showed that the EEC group had a higher pooled response rate, but a significant difference was not observed in the studies using other scales ( $P = 0.244$ ). The single-blind, duration  $> 6$  months, and CC studies supported that the response rate of EEC was greater than TAU, but the studies using MBC/AGT ( $n = 5$ ) did not show a significant difference.

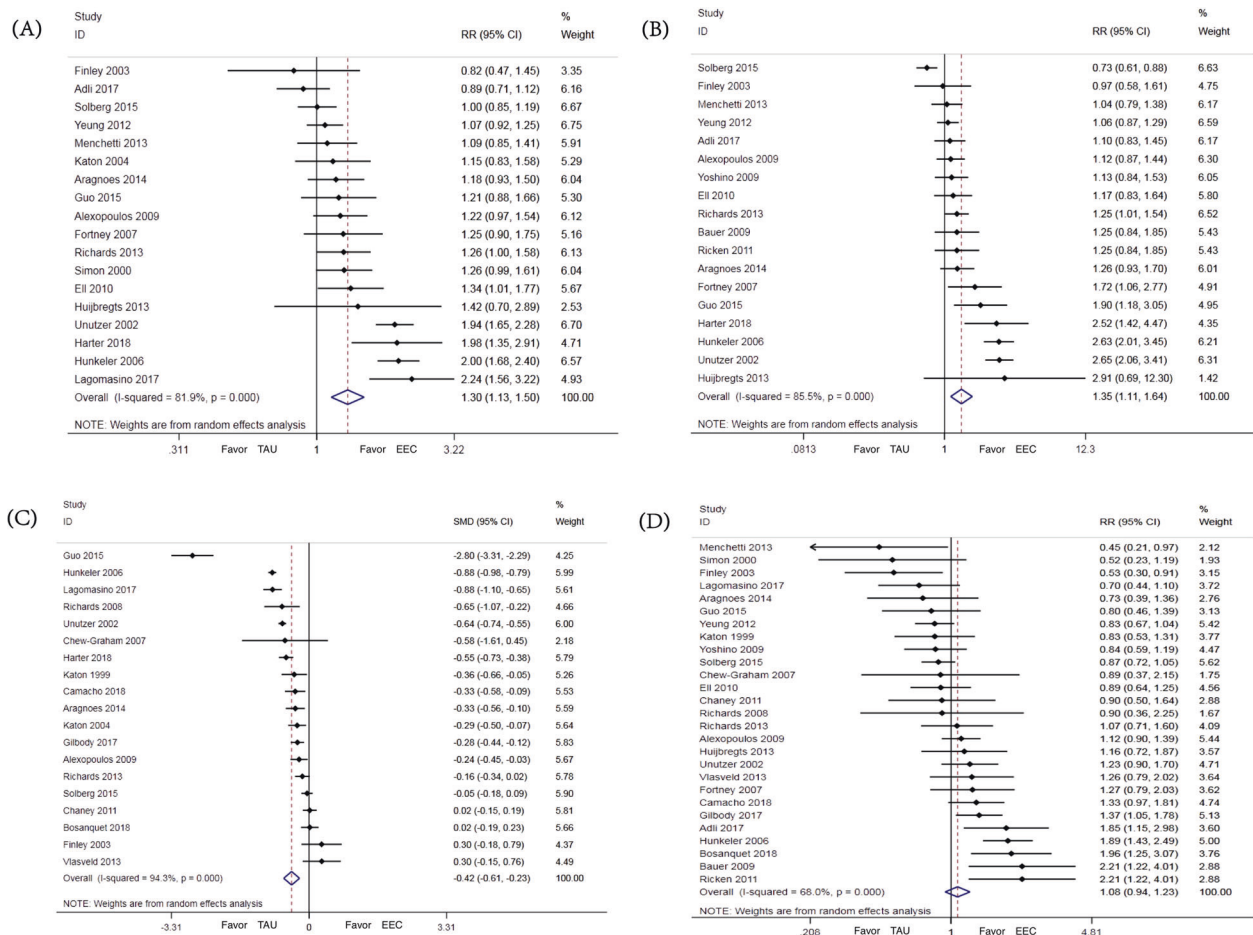
With respect of remission rate, studies using the SCL (RR: 2.47, 95%CI: 2.00–3.03,  $I^2 = 26.6\%$ ,  $P < 0.001$ ) and other scales (RR: 1.18, 95%CI: 1.04–1.34,  $I^2 = 0\%$ ,  $P = 0.013$ ) supported that EEC is superior to TAU, which was not observed in the studies using PHQ-9 ( $P = 0.183$ ). Similar to response rate, single-blind, duration  $> 6$  months studies favored EEC to TAU. Both the MBC/AGT ( $n = 7$ ) and CC ( $n = 11$ ) studies showed that the enhanced intervention had higher remission rate than TAU ( $P < 0.05$ ).

With respect of the improvement of symptoms, studies using the PHQ-9 (SMD:  $-0.26$ , 95%CI:  $-0.45$ – $-0.07$ ),  $I^2 = 88.1\%$ ,  $P = 0.007$ ) and the SCL (SMD:  $-0.53$ , 95%CI:  $-0.75$ – $-0.31$ ),  $I^2 = 88.2\%$ ,  $P < 0.001$ ) showed that EEC had greater symptom reduction. Single-blind studies supported EEC had a greater reduction in symptoms than TAU, which was not observed in open-label studies. In both long- and short- term duration of

**Table 1.** Patients and characteristics of the included studies.

| Author / Year          | Intervention | Number of centers | Blinding | Analyses | Duration (mean) | Number of patients (ITT) | Mean age (yrs) | Male (%) | Scale   | JADAD score |
|------------------------|--------------|-------------------|----------|----------|-----------------|--------------------------|----------------|----------|---------|-------------|
| Adli, 2017 [6]         | AGT          | 10                | No       | LOCF     | 20w             | 429                      | 44.2           | 36.83    | HAMD-21 | 3           |
| Alexopoulos, 2009 [35] | CC           | 20                | No       | OC       | 24 m            | 599                      | NR             | 28.38    | HAMD-24 | 2           |
| Aragonès, 2014 [40]    | CC           | 20                | Single   | OC       | 12 m            | 338                      | 47             | 20.12    | PHQ-9   | 2           |
| Bauer, 2009 [11]       | MBC          | 1                 | No       | LOCF     | 12w             | 148                      | 48.2           | 40.54    | BRMS    | 3           |
| Bosanquet, 2018 [31]   | CC           | 4                 | No       | NR       | 18 m            | 415                      | 71.9           | 82.89    | PHQ-9   | 3           |
| Camacho, 2018 [41]     | CC           | 36                | Single   | NR       | 24 m            | 387                      | 58.5           | 62.02    | SCL-D13 | 3           |
| Chaney, 2011 [33]      | CC           | 10                | No       | LOCF     | 7 m             | 546                      | 64.2           | 96.15    | PHQ-9   | 2           |
| Chew-Graham, 2007 [30] | CC           | 43                | Single   | OC       | 16w             | 105                      | 75.5           | 27.62    | SCL-20  | 3           |
| Elli, 2010 [42]        | CC           | 2                 | No       | NR       | 18 m            | 387                      | NR             | 17.83    | PHQ-9   | 3           |
| Finley, 2003 [43]      | CC           | 1                 | No       | NR       | 6 m             | 125                      | 54.28          | 15.20    | BIDS    | 2           |
| Fortney, 2007 [44]     | CC           | 7                 | Single   | OC       | 12 m            | 395                      | 59.2           | 91.65    | SCL-20  | 2           |
| Gilbody, 2017 [32]     | CC           | 32                | Single   | NR       | 12 m            | 705                      | 77             | 42.27    | PHQ-9   | 3           |
| Guo, 2015 [13]         | MBC          | 1                 | Single   | LOCF     | 24w             | 120                      | 41.1           | 35.83    | HAMD-17 | 3           |
| Harter, 2018 [17]      | SCM          | 49                | NR       | LOCF     | 12 m            | 737                      | 42.1           | 26.59    | PHQ-9   | 3           |
| Huijbregts, 2013 [45]  | CC           | 18                | Single   | OC       | 12 m            | 150                      | 48.67          | NR       | PHQ-9   | 3           |
| Hunkeler, 2006 [34]    | CC           | 18                | Single   | OC       | 12 m            | 1801                     | 71.2           | 35.00    | SCL-20  | 2           |
| Katon, 1999 [8]        | CC           | 4                 | Single   | NR       | 6 m             | 228                      | 47.8           | 27.70    | SCL-20  | 3           |
| Katon, 2004 [46]       | CC           | 9                 | Single   | NR       | 12 m            | 329                      | 58.35          | 35.00    | SCL-90  | 3           |
| Lagomasino, 2017 [36]  | CC           | 3                 | No       | OC       | 16w             | 400                      | 49.6           | 16.75    | PHQ-9   | 3           |
| Menchetti, 2013 [37]   | CC           | 16                | Single   | ITT      | 12 m            | 227                      | 51.8           | 23.79    | PHQ-9   | 3           |
| Richards, 2013 [47]    | CC           | 51                | Single   | OC       | 12 m            | 581                      | 44.8           | 28.06    | PHQ-9   | 3           |
| Richards, 2008 [48]    | CC           | 1                 | Single   | OC       | 3 m             | 114                      | 42.47          | 22.81    | PHQ-9   | 3           |
| Ricken, 2011 [49]      | MBC          | 1                 | No       | OC       | 20w             | 148                      | 48.2           | 40.54    | BRMS    | 3           |
| Simon, 2000 [50]       | CC           | 5                 | Single   | OC       | 6 m             | 613                      | 46.6           | 17.46    | HSCD-20 | 3           |
| Solberg, 2015 [51]     | CC           | 75                | No       | NR       | 6 m             | 2348                     | 44.4           | 27.30    | PHQ-9   | 2           |
| Unützer, 2002 [16]     | CC           | 18                | Single   | NR       | 12 m            | 1801                     | 71.2           | 35.15    | SCL-20  | 3           |
| Vlasveld, 2012 [52]    | MBC          | 1                 | No       | NR       | 12 m            | 126                      | 42.63          | 46.03    | PHQ-9   | 3           |
| Yeung, 2012 [14]       | AGT          | 74                | Single   | ITT      | 6 m             | 642                      | 46             | 33.64    | PHQ-9   | 2           |
| Yoshino, 2009 [15]     | AGT          | 1                 | No       | NR       | 54 m            | 210                      | 48.9           | 50.95    | CGI     | 2           |

AGT algorithm-guided treatment, BIDS Brief Inventory for Depressive Symptoms, CC collaborative care, HSCD-20 20 item depression scale from the Hopkins symptom checklist, ITT intent-to treat, MBC measurement-based care, NR not report, OC observed cases, SCM stepped care model, which was treated as MBC in this study.



**Fig. 2** Effects of EEC on MDD. **A** Response; **B** Remission; **C** Improvement of depressive symptoms; **D** Discontinuation.

studies, EEC was superior to TAU in the reduction of scale scores. With regard to the specific EEC, CC led to greater symptoms improvement compared to TAU (SMD:  $-0.30$ , 95% CI:  $-0.48 - (-0.12)$ ,  $I^2 = 93.1\%$ ,  $P = 0.001$ ), however, this was not shown in the studies using MBC/AGT ( $P = 0.139$ ).

Meta-regression analysis found that older mean age was positively associated with higher remission rate ( $\beta = 0.04$ ,  $P = 0.012$ ). JADAD scores and proportion of males were not significantly associated with response rate, remission rate, and changes of scale scores.

#### Publication bias, sensitivity analysis

Egger's test for response rate ( $t = 1.25$ ,  $P = 0.229$ ), remission rate ( $t = 0.55$ ,  $P = 0.590$ ), and changes of scale scores ( $t = -1.18$ ,  $P = 0.254$ ) indicated no publication bias. Funnel plots of the response and remission rate are shown in Supplementary Figure 1 and 2. Sensitivity analysis of pooled RR for response and remission rate is shown in Supplementary Figure 3 and 4, and there was no significant change in primary results when included studies were removed one by one.

#### DISCUSSION

Enhanced evidence-based care strategies, such as MBC, CC, and AGT have demonstrated improved outcomes over treatment as usual. This is the largest meta-analysis of 29 RCTs with a total of 15,255 patients targeting the effectiveness of EEC in the treatment of depressive disorders. Of the 29 studies, 18 studies reported the number or rate of response and remission, and pooled RR of response and remission rate were 1.30 and 1.35, respectively,

showing that EEC is superior to usual care. Nineteen studies reported the change in the depressive symptoms, and EEC showed a significant decrease of depressive symptoms compared with usual care with small effect size (SMD =  $-0.42$ ). These findings supported the effectiveness of EEC strategies for depressive disorders compared to usual care, which are consistent with the findings of the previous meta-analyses of CC [19] and MBC in depressed adolescents [22]. This study highlights the value of EEC for management of depressive disorders.

Subgroup analyses found that response, remission and improvement of symptoms were moderated by rating scales, study design (single-blind or open-label), study duration and intervention type when comparing EEC with TAU. Meta-regression showed that older age was positively associated with the remission rate. In this meta-analysis, six studies included have examined the effectiveness of EEC in older people [16, 30–34], and all of these studies used PHQ-9 or SCL to assess the efficacy outcome. The duration in five of the geriatric studies was longer than 6 months [16, 31–34], and four out of six studies were single-blinded [16, 30, 32, 34]. Given the overlap in these factors, this may explain the finding that older people benefit most from EEC for depression. Alternatively, another explanation may be that some studies enrolled patients with subthreshold or mild depression [15, 17, 32] and some studies partly included minor depression or dysthymia [11, 16, 17, 34–37], which could enhance the remission rate at endpoint. The rating scales and definition of response and remission could also affect the overall outcomes. Therefore, the effect of associated factors on the treatment outcome of EEC should be further examined.

**Table 2.** Subgroup analyses of efficacy and safety of EEC in the treatment of depressive disorders.

|                         | Subgroups                     | Categories (Number of Studies) | Sample size | RRs/ SMDs | 95% Confidence Interval (%) [Lower, Upper] | I <sup>2</sup> (%) | P within subgroup |
|-------------------------|-------------------------------|--------------------------------|-------------|-----------|--|--------------------|-------------------|
| Response rate           | Scales                        | PHQ-9 (9)                      | 4794        | 1.28      | [1.10, 1.50]                               | 69.6               | 0.002             |
|                         |                               | SCL (4)                        | 3962        | 1.60      | [1.24, 2.05]                               | 78.8               | <0.001            |
|                         |                               | Others (5)                     | 1300        | 1.10      | [0.94, 1.30]                               | 40.1               | 0.244             |
|                         | Blind                         | Open label (7)                 | 3823        | 1.26      | [0.99, 1.61]                               | 81.1               | 0.057             |
|                         |                               | Single-blind (11)              | 6233        | 1.33      | [1.12, 1.57]                               | 81.3               | 0.001             |
|                         | Duration (weeks) <sup>#</sup> | ≤u months (7)                  | 3493        | 1.15      | [0.96, 1.37]                               | 73.1               | 0.140             |
|                         |                               | > 6 months (11)                | 6563        | 1.41      | [1.20, 1.66]                               | 76.2               | <0.001            |
|                         | Intervention                  | MBC + AGT (5)                  | 2241        | 1.19      | [0.97, 1.47]                               | 71.6               | 0.100             |
|                         |                               | CC (13)                        | 7815        | 1.34      | [1.13, 1.59]                               | 82.2               | 0.001             |
| Remission rate          | Scales                        | PHQ-9 (8)                      | 4461        | 1.16      | [0.93, 1.44]                               | 76.5               | 0.183             |
|                         |                               | SCL (3)                        | 3636        | 2.47      | [2.00, 3.03]                               | 26.6               | <0.001            |
|                         |                               | Others (7)                     | 1414        | 1.18      | [1.04, 1.34]                               | 0.0                | 0.013             |
|                         | Blind                         | Open label (9)                 | 3996        | 1.13      | [0.93, 1.37]                               | 69.0               | 0.231             |
|                         |                               | Single blind (9)               | 5515        | 1.60      | [1.20, 2.14]                               | 87.5               | 0.001             |
|                         | Duration (weeks) <sup>#</sup> | ≤u months (7)                  | 3064        | 1.09      | [0.88, 1.36]                               | 71.6               | 0.424             |
|                         |                               | >6 months (11)                 | 6447        | 1.54      | [1.20, 2.00]                               | 84.7               | 0.001             |
|                         | Intervention                  | MBC + AGT (7)                  | 2355        | 1.28      | [1.06, 1.54]                               | 51.9               | 0.010             |
|                         |                               | CC (11)                        | 7156        | 1.37      | [1.12, 1.64]                               | 90.4               | 0.036             |
| Changes of scale scores | Scales                        | PHQ-9 (10)                     | 5750        | -0.26     | [-0.45, -0.07]                             | 88.1               | 0.007             |
|                         |                               | SCL (6)                        | 4408        | -0.53     | [-0.75, -0.31]                             | 88.2               | <0.001            |
|                         |                               | Others (3)                     | 558         | -0.90     | [-2.47, 0.66]                              | 97.9               | 0.256             |
|                         | Blind                         | Open label (7)                 | 3975        | -0.22     | [-0.47, 0.04]                              | 91.4               | 0.099             |
|                         |                               | single-blind (12)              | 6741        | -0.55     | [-0.79, -0.31]                             | 93.9               | <0.001            |
|                         | Duration (weeks) <sup>#</sup> | ≤u months (7)                  | 3060        | -0.71     | [-1.28, -0.13]                             | 95.7               | 0.016             |
|                         |                               | >6 months (12)                 | 7656        | -0.30     | [-0.50, -0.10]                             | 93.7               | 0.003             |
|                         | Intervention                  | MBC + AGT (2)                  | 1499        | -1.66     | [-3.87, 0.54]                              | 98.5               | 0.139             |
|                         |                               | CC (17)                        | 9217        | -0.30     | [-0.48, -0.12]                             | 93.1               | 0.001             |

AGT Algorithm-guided treatment, CC collaborative care, MBC measure-based care, PHQ-9 Patient Health Questionnaire-9 item, SCL-20 20 item of Symptom Checklist.

Note:  $P < 0.05$  was considered statistically significant. <sup>#</sup>using median splitting method.

All-cause discontinuation did not differ significantly between EEC and usual care, which demonstrated the good acceptability and feasibility of EEC in clinical practice. One concern, of course, is whether patients will agree to regular monitoring of symptoms, which is the key component of MBC. In fact, routine self-assessment is not the burden of the patients, by contrast, monitoring their symptoms and side effects can help them understand the nature of their depression and the complexity of its treatment. All these factors are beneficial in improving the acceptability of the illness management [38].

The following limitations of this meta-analysis should be acknowledged. First, the number of eligible studies of this meta-analysis for response (18 RCTs), remission (18 RCT), and symptoms improvement (19 RCTs) were relatively small, which increases the type II error [39]. Second, significant heterogeneity of the results regarding response ( $I^2 = 81.9\%$ ), remission ( $I^2 = 85.5\%$ ), and symptoms improvement ( $I^2 = 94.3\%$ ) was found. Finally, the subgroup and meta-regression analyses were only conducted between EEC as a whole and TAU, the efficacy of the different types of interventions (MBC, AGT, CC) was not compared due to limited number of studies ( $n = 8$ ) using MBC/AGT.

In conclusion, this meta-analysis confirmed the effectiveness and acceptability of enhanced evidence-based care, such as measurement-based care, algorithm-guided treatment, and collaborative care, in the management of depressed patients. As an evidence-based framework, EEC could also reduce variability in psychiatric treatment [7]. Moreover, EEC can be utilized across a diverse range of settings, disorders and treatment, so it is conceptualized as a transdiagnostic and transtheoretical practice [12]. Therefore, we recommend some forms of EEC in clinical practice and psychiatry residency training in the future.

## REFERENCES

1. Pence BW, O'Donnell JK, Gaynes BN. The depression treatment cascade in primary care: a public health perspective. *Curr Psychiatry Rep.* 2012;14:328–35.
2. Aboraya A, Nasrallah HA, Elswick DE, Ahmed E, Estephan N, Aboraya D, et al. Measurement-based Care in Psychiatry-Past, Present, and Future. *Innov Clin Neurosci.* 2018;15:13–26.
3. Trivedi MH, Rush AJ, Wisniewski SR, Nierenberg AA, Warden D, Ritz L, et al. Evaluation of outcomes with citalopram for depression using measurement-based care in STAR\*D: implications for clinical practice. *Am J psychiatry.* 2006;163:28–40.

4. Adli M, Berghöfer A, Linden M, Helmchen H, Müller-Oerlinghausen B, Mackert A, et al. Effectiveness and feasibility of a standardized stepwise drug treatment regimen algorithm for inpatients with depressive disorders: results of a 2-year observational algorithm study. *J Clin Psychiatry*. 2002;63:782–90.
5. Bhatara V. Treatment of depression in primary care: decision-making aided by an algorithm. *S D J Med*. 1984;37:5–9.
6. Adli M, Wiethoff K, Baghai TC, Fisher R, Seemüller F, Laakmann G, et al. How effective is algorithm-guided treatment for depressed inpatients? results from the randomized controlled multicenter German Algorithm Project 3 Trial. *Int J Neuropsychopharmacol*. 2017;20:721–30.
7. Waldrop J, McGuinness TM. Measurement-based care in psychiatry. *J Psychosoc Nurs Ment Health Serv*. 2017;55:30–35.
8. Katon W, Von Korff M, Lin E, Simon G, Walker E, Unützer J, et al. Stepped collaborative care for primary care patients with persistent symptoms of depression: A randomized trial. *Arch Gen Psychiatry*. 1999;56:1109–15.
9. Krahn DD, Bartels SJ, Coakley E, Oslin DW, Chen H, McIntyre J, et al. PRISM-E: comparison of integrated care and enhanced specialty referral models in depression outcomes. *Psychiatr Serv (Wash, DC)*. 2006;57:946–53.
10. Adli M, Bauer M, Rush AJ. Algorithms and collaborative-care systems for depression: are they effective and Why? a systematic review. *Biol Psychiatry*. 2006;59:1029–38.
11. Bauer M, Pfennig A, Linden M, Smolka MN, Neu P, Adli M. Efficacy of an algorithm-guided treatment compared with treatment as usual: a randomized, controlled study of inpatients with depression. *J Clin Psychopharmacol*. 2009;29:327–33.
12. Lewis CC, Boyd M, Puspitasari A, Navarro E, Howard J, Kassab H, et al. Implementing Measurement-Based Care in Behavioral Health: A Review. *JAMA Psychiatry*. 2019;76:324–35.
13. Guo T, Xiang YT, Xiao L, Hu CQ, Chiu HF, Ungvari GS, et al. Measurement-based care versus standard care for major depression: a randomized controlled trial with blind raters. *Am J Psychiatry*. 2015;172:1004–13.
14. Yeung AS, Jing Y, Brennehan SK, Chang TE, Baer L, Hebden T, et al. Clinical Outcomes in Measurement-based Treatment (Comet): a trial of depression monitoring and feedback to primary care physicians. *Depress Anxiety*. 2012;29:865–73.
15. Yoshino A, Sawamura T, Kobayashi N, Kurauchi S, Matsumoto A, Nomura S. Algorithm-guided treatment versus treatment as usual for major depression. *Psychiatry Clin Neurosci*. 2009;63:652–7.
16. Unützer J, Katon W, Callahan CM, Williams JW Jr, Hunkeler E, Harpole L, et al. Collaborative care management of late-life depression in the primary care setting: A randomized controlled trial. *JAMA: J Am Med Assoc*. 2002;288:2836–45.
17. Härter M, Watzke B, Daubmann A, Wegscheider K, König HH, Brettschneider C, et al. Guideline-based stepped and collaborative care for patients with depression in a cluster-randomised trial. *Sci Rep*. 2018;8:9389.
18. Trivedi MH, Rush AJ, Crismon ML, Kashner TM, Toprac MG, Carmody TJ, et al. Clinical Results for Patients With Major Depressive Disorder in the Texas Medication Algorithm Project. *Arch Gen Psychiatry*. 2004;61:669–80.
19. Sighinolfi C, Nespeca C, Menchetti M, Levantesi P, Belvederi Murri M, Berardi D. Collaborative care for depression in European countries: A systematic review and meta-analysis. *J Psychosom Res*. 2014;77:247–63.
20. Li M, Kennedy EB, Byrne N, Gérin-Lajoie C, Katz MR, Keshavarz H, et al. Systematic review and meta-analysis of collaborative care interventions for depression in patients with cancer. *Psycho-Oncol*. 2017;26:573–87.
21. Coventry PA, Hudson JL, Kontopantelis E, Archer J, Richards DA, Gilbody S. Characteristics of effective collaborative care for treatment of depression: A systematic review and meta-regression of 74 randomised controlled trials. *PLoS ONE*. 2014;9:e108114.
22. Elmquist JM, Melton TK, Croarkin P, McClintock SM. A systematic overview of measurement-based care in the treatment of childhood and adolescent depression. *J Psychiatr Pract*. 2010;16:217–34.
23. Moher D, Liberati A, Tetzlaff J, Altman DG. Preferred reporting items for systematic reviews and meta-analyses: the PRISMA statement. *Ann Intern Med*. 2009;151:264–9, W264.
24. Higgins, J & Higgins, J. Prof. *Cochrane handbook for systematic reviews of interventions*. (John Wiley & Sons, 2008).
25. Jadad AR, Moore RA, Carroll D, Jenkinson C, Reynolds DJ, Gavaghan DJ, et al. Assessing the quality of reports of randomized clinical trials: is blinding necessary? *Controlled Clin trials*. 1996;17:1–12.
26. Balsem H, Helfand M, Schünemann HJ, Oxman AD, Kunz R, Brozek J, et al. GRADE guidelines: 3. Rating the quality of evidence. *J Clin Epidemiol*. 2011;64:401–6.
27. Atkins D, Best D, Briss PA, Eccles M, Falck-Ytter Y, Flottorp S, et al. Grading quality of evidence and strength of recommendations. *BMJ (Clin Res ed)*. 2004;328:1490.
28. Higgins JP, Thompson SG. Quantifying heterogeneity in a meta-analysis. *Stat Med*. 2002;21:1539–58.
29. Egger M, Davey Smith G, Schneider M, Minder C. Bias in meta-analysis detected by a simple, graphical test. *BMJ (Clin Res ed)*. 1997;315:629–34.
30. Chew-Graham CA, Lovell K, Roberts C, Baldwin R, Morley M, Burns A, et al. A randomised controlled trial to test the feasibility of a collaborative care model for the management of depression in older people. *Br J Gen Pract*. 2007;57:364–70.
31. Bosanquet K, Adamson J, Atherton K, Bailey D, Baxter C, Beresford-Dent J, et al. Collaborative care for screen-positive elders with major depression (CASPER plus): a multicentred randomized controlled trial of clinical effectiveness and cost-effectiveness. *Health Technol Assess*. 2017;21:1–251.
32. Gilbody S, Lewis H, Adamson J, Atherton K, Bailey D, Birtwistle J. Effect of Collaborative Care vs Usual Care on Depressive Symptoms in Older Adults With Subthreshold Depression: The CASPER Randomized Clinical Trial. *Jama*. 2017;317:728–37.
33. Chaney EF, Rubenstein LV, Liu CF, Yano EM, Bolkan C, Lee M, et al. Implementing collaborative care vs depression treatment in primary care: a cluster randomized evaluation of a quality improvement practice redesign. *Implement Sci*. 2011;6:121.
34. Hunkeler EM, Katon W, Tang L, Williams JW, Kroenke K, Lin EH, et al. Long term outcomes from the IMPACT randomised trial for depressed elderly patients in primary care. *BMJ (Clin Res ed)*. 2006;332:259–63.
35. Alexopoulos GS, Reynolds CF, Bruce ML, Katz IR, Raue PJ, Mulsant BH, et al. Reducing suicidal ideation and depression in older primary care patients: 24-month outcomes of the PROSPECT study. *Am J Psychiatry*. 2009;166:882–90.
36. Lagomasino IT, Dwight-Johnson M, Green JM, Tang L, Zhang L, Duan N, et al. Effectiveness of collaborative care for depression in public-sector primary care clinics serving Latinos. *Psychiatr Serv*. 2017;68:353–9.
37. Menchetti M, Sighinolfi C, Di Michele V, Peloso P, Nespeca C, Bandieri PV, et al. Effectiveness of collaborative care for depression in Italy. A randomized controlled trial. *Gen Hospital Psychiatry*. 2013;35:579–86.
38. Rush AJ, Fava M, Wisniewski SR, Lavori PW, Trivedi MH, Sackeim HA, et al. Sequenced treatment alternatives to relieve depression (STAR\*D): rationale and design. *Controlled Clin trials*. 2004;25:119–42.
39. Leloir J, Grégoire G, Benhaddad A, Lapiere J, Derderian F. Discrepancies between meta-analyses and subsequent large randomized, controlled trials. *N. Engl J Med*. 1997;337:536–42.
40. Aragonès E, Caballero A, Piñol J, López-Cortacans G. Persistence in the long term of the effects of a collaborative care programme for depression in primary care. *J Affect Disord*. 2014;166:36–40.
41. Camacho EM, Davies LM, Hann N, Small N, Bower P, Chew-Graham C, et al. Long-term clinical and cost-effectiveness of collaborative care (versus usual care) for people with mental-physical multimorbidity: cluster-randomised trial. *Br J Psychiatry*. 2018;213:456–63.
42. Ell K, Katon W, Xie B, Lee PJ, Kapetanovic S, Guterma J, et al. Collaborative care management of major depression among low-income, predominantly hispanic subjects with diabetes: a randomized controlled trial. *Diabetes Care*. 2010;33:706–13.
43. Finley PR, Rens HR, Pont JT, Gess SL, Louie C, Bull SA, et al. Impact of a collaborative care model on depression in a primary care setting: a randomized controlled trial. *Pharmacotherapy*. 2003;23:1175–85.
44. Fortney JC, Pyne JM, Edlund MJ, Williams DK, Robinson DE, Mittal D, et al. A randomized trial of telemedicine-based collaborative care for depression. *J Gen Intern Med*. 2007;22:1086–93.
45. Huijbregts KM, de Jong FJ, van Marwijk HW, Beekman AT, Adèr HJ, Hakkaart-van Roijen L, et al. A target-driven collaborative care model for major depressive disorder is effective in primary care in the Netherlands. A randomized clinical trial from the depression initiative. *J Affect Disord*. 2013;146:328–37.
46. Katon WJ, Von Korff M, Lin EHB, Simon G, Ludman E, Russo J, et al. The pathways study: A randomized trial of collaborative care in patients with diabetes and depression. *Arch Gen Psychiatry*. 2004;61:1042–9.
47. Richards DA, Hill JJ, Gask L, Lovell K, Chew-Graham C, Bower P, et al. Clinical effectiveness of collaborative care for depression in UK primary care (CADET): Cluster randomised controlled trial. *BMJ (Online)*. 2013;347:A913.
48. Richards DA, Lovell K, Gilbody S, Gask L, Torgerson D, Barkham M, et al. Collaborative care for depression in UK primary care: a randomized controlled trial. *Psychological Med*. 2008;38:279–87.
49. Ricken R, Wiethoff K, Reinhold T, Schietsch K, Stamm T, Kiermeir J. Algorithm-guided treatment of depression reduces treatment costs - Results from the randomized controlled German Algorithm Project (GAPiI). *J Affect Disord*. 2011;134:249–56.
50. Simon GE, VonKorff M, Rutter C, Wagner E. Randomised trial of monitoring, feedback, and management of care by telephone to improve treatment of depression in primary care. *BMJ (Clin Res ed)*. 2000;320:550–4.
51. Solberg LI, Crain AL, Maciosek MV, Unützer J, Ohnsorg KA, Beck A, et al. A stepped-wedge evaluation of an initiative to spread the collaborative care model for depression in primary care. *Ann Fam Med*. 2015;13:412–20.

52. Vlasveld MC, van der Feltz-Cornelis CM, Adèr HJ, Anema JR, Hoedeman R, van Mechelen W, et al. Collaborative care for major depressive disorder in an occupational healthcare setting. *Br J psychiatry*. 2012;200:510–1.

### ACKNOWLEDGEMENTS

The study was supported by National Key Research & Development Program of China (2016YFC1307200, 2017YFC1311100), the Capital's Funds for Health Improvement and Research (No. 2018-1-2121) and Beijing Hospitals Authority Youth Programme (QML20181902).

### AUTHOR CONTRIBUTIONS

Study design: Y.T.X., G.W. Data collection, analysis, and interpretation: H.Q., L.X., W.Z. Drafting of the manuscript: L.X., H.Q., Y.T.X. Critical revision of the manuscript: T.J.C, T. L.M, M.H.T. Approval of the final version for publication: all co-authors.

### COMPETING INTERESTS

The authors declare no competing interests.

### ADDITIONAL INFORMATION

**Supplementary information** The online version contains supplementary material available at <https://doi.org/10.1038/s41398-021-01638-7>.

**Correspondence** and requests for materials should be addressed to Yu-Tao Xiang or Gang Wang.

**Reprints and permission information** is available at <http://www.nature.com/reprints>

**Publisher's note** Springer Nature remains neutral with regard to jurisdictional claims in published maps and institutional affiliations.



**Open Access** This article is licensed under a Creative Commons Attribution 4.0 International License, which permits use, sharing, adaptation, distribution and reproduction in any medium or format, as long as you give appropriate credit to the original author(s) and the source, provide a link to the Creative Commons license, and indicate if changes were made. The images or other third party material in this article are included in the article's Creative Commons license, unless indicated otherwise in a credit line to the material. If material is not included in the article's Creative Commons license and your intended use is not permitted by statutory regulation or exceeds the permitted use, you will need to obtain permission directly from the copyright holder. To view a copy of this license, visit <http://creativecommons.org/licenses/by/4.0/>.

© The Author(s) 2021