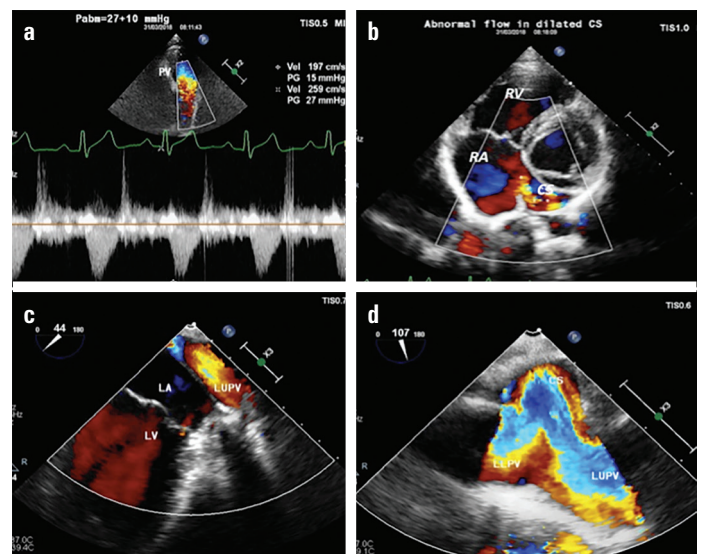


## An unusual cause of pulmonary hypertension; partial anomalous pulmonary venous return to coronary sinus detected on transesophageal echocardiography 🎥

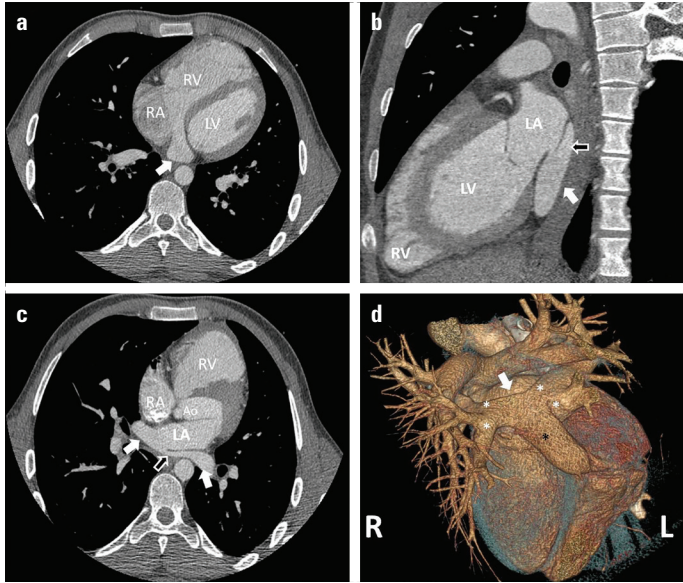
An asymptomatic male patient aged 25 years was admitted to the cardiology polyclinic with two transesophageal echocardiography (TEE) reports from separate hospitals indicating no abnormalities. Transthoracic echocardiography revealed mild tricuspid valve regurgitation and mild right chamber dilation. Mean pulmonary arterial pressure measured on pulmonary valve was 37 mm Hg. Coronary sinus (CS) was dilated with an abnormal flow (Fig. 1a, 1b). TEE was performed to detect the etiology of pulmonary hypertension (PHT); it showed that the left upper pulmonary vein was separated from the left atrium by a septum (Video 1) and the



**Figure 1.** (a) Mean pulmonary arterial pressure measured on pulmonary valve was 27+10: 37 mm Hg. (b) Coronary sinus (CS) was dilated with an abnormal flow. (c) Transesophageal echocardiography showed that the left superior pulmonary vein was separated from the left atrium by a septum and was draining into CS. (d) The left upper and lower pulmonary veins were both draining into the CS.

PABm - mean pulmonary arterial pressure, PV - pulmonary valve, RA - right atrium, RV - right ventricle, LA - left atrium, LV - left ventricle, LUPV - left upper pulmonary vein, LLPV - left lower pulmonary vein

left upper and lower pulmonary veins were both draining to the CS (Fig. 1c, 1d, Video 2). Computed tomography showed partial anomalous pulmonary venous return (PAPVR) that involved left pulmonary veins draining into CS, as seen on TEE (Fig. 2). The patient was referred for right cardiac catheterization and subsequent surgical correction, although the procedure has not yet been performed.



**Figure 2.** (a) The coronary sinus (CS) diameter (arrow) is approximately 22 mm, and CS is markedly dilated. (b) The sagittal section shows that left pulmonary veins (LPVs) (black arrow) are draining into CS (white arrow). (c) The section passing through LA (left atrium) shows that right pulmonary veins (RPVs) (white arrow) are draining into LA and LPVs (white arrow) are connected to CS. LPVs also have a small connection (black arrow) with LA. (d) The Volume Rendering Technique (VRT) image, passing through the posterior part of the heart, shows that LPVs (white asterisk) are linked by a common root to CS (black asterisk). Although RPVs (white asterisks) appear to be connected with CS on the VRT image, it is evident on the axial views that they are draining into LA (white arrow). Thus, VRT images can be misleading, and axial images must be carefully examined.

LV - left ventricle, RA - right atrium, RV - right ventricle, Ao - aorta

The drainage of the pulmonary veins to CS is an uncommon finding and is a very rare cause of PHT. We have reported a case of isolated PAPVR to CS, detected on TEE, leading to PHT. The presented patient had undergone multiple TEE examinations; however, a review of the previous reports indicated no anomalies of the pulmonary vein. Given the widespread use of TEE, cardiologists should be aware of the possibility of anomalous pulmonary venous return (APVR) and be vigilant in tracing the path of pulmonary veins to identify APVR in patients evaluated for unexplained PHT.

**Informed consent:** Patient informed consent was obtained for publication.

**Video 1.** Transesophageal Echocardiography. The left upper pulmonary vein was separated from the left atrium by a septum and was draining into the coronary sinus

LA - left atrium, LV - left ventricle, LUPV - left upper pulmonary vein

**Video 2.** Transesophageal Echocardiography. The left upper and lower pulmonary veins were both draining into the coronary sinus

CS - coronary sinus, LLPV - left lower pulmonary vein, LUPV - left upper pulmonary vein

**Emrah Erdoğan**, **Murat Cap**<sup>1</sup>, **Süleyman Efe**<sup>2</sup>

**Department of Cardiology, Ağrı State Hospital; Ağrı-Turkey**

**<sup>1</sup>Department of Cardiology, Health Science University, Diyarbakır**

**Gazi Yaşargil Training and Research Hospital;**

**Diyarbakır-Turkey**

**<sup>2</sup>Department of cardiology, Health Science University Istanbul**

**Education and Research Hospital, İstanbul, Turkey**

**Address for Correspondence:** Dr. Emrah Erdoğan,

Ağrı Devlet Hastanesi,

Kardiyoloji Kliniği, 04000

Ağrı-Türkiye

Phone: +90 546 667 33 30

E-mail: dremraherdogan49@gmail.com

©Copyright 2019 by Turkish Society of Cardiology - Available online at [www.anatoljcardiol.com](http://www.anatoljcardiol.com)

DOI:10.14744/AnatolJCardiol.2019.60734