

# Laparoscopic Sentinel Node Navigation Surgery for Stomach Preservation in Patients With Early Gastric Cancer: A Randomized Clinical Trial

Young-Woo Kim, MD<sup>1</sup>; Jae-Seok Min, MD<sup>2</sup>; Hong Man Yoon, MD<sup>1</sup>; Ji Yeong An, MD<sup>3,4</sup>; Bang Wool Eom, MD<sup>1</sup>; Hoon Hur, MD<sup>5</sup>; Young Joon Lee, MD<sup>6</sup>; Gyu Seok Cho, MD<sup>7</sup>; Young-Kyu Park, MD<sup>8</sup>; Mi Ran Jung, MD<sup>8</sup>; Ji-Ho Park, MD<sup>6</sup>; Woo Jin Hyung, MD<sup>3</sup>; Sang-Ho Jeong, MD<sup>6</sup>; Myeong-Cherl Kook, MD<sup>1</sup>; Mira Han, MS<sup>9</sup>; Byung-Ho Nam, PhD<sup>10,11</sup>; and Keun Won Ryu, MD, PhD<sup>1</sup>

## abstract

**PURPOSE** To compare postoperative complications, long-term survival, and quality of life (QOL) after laparoscopic sentinel node navigation surgery (LSNNS) and laparoscopic standard gastrectomy (LSG).

**METHODS** Five hundred eighty patients with preoperatively diagnosed stage IA gastric adenocarcinoma ( $\leq 3$  cm) were assigned to undergo either LSG or LSNNS. Observers were not blinded to patient grouping. The primary outcome was 3-year disease-free survival (3y-DFS). Secondary outcomes included postoperative complications, QOL, 3-year disease-specific survival (3y-DSS), and 3-year overall survival (3y-OS).

**RESULTS** In total, 527 patients were included in the modified intention-to-treat analysis population for the primary outcome (LSG, 269; LSNNS, 258). Stomach-preserving surgery was performed in 210 patients (81%) in the LSNNS group. During the median follow-up duration, the 3y-DFS rates in the LSG and LSNNS groups were 95.5% and 91.8%, respectively (difference: 3.7%; 95% CI,  $-0.6$  to  $8.1$ ). Three patients with recurrence and five with metachronous gastric cancer in the LSNNS group underwent standard surgery. Two patients with distant metastasis in both groups were treated with palliative chemotherapy. The 3y-DSS and 3y-OS rates in the LSG and LSNNS groups were 99.5% and 99.1% ( $P = .59$ ) and 99.2% and 97.6% ( $P = .17$ ), respectively. Postoperative complications occurred in 19.0% of the LSG group and 15.5% of the LSNNS group ( $P = .294$ ). The LSNNS group showed better physical function ( $P = .015$ ), less symptoms ( $P < .001$ ), and improved nutrition than the LSG group.

**CONCLUSION** LSNNS did not show noninferiority to LSG for 3y-DFS, with a 5% margin. However, the 3y-DSS and 3y-OS were not different after rescue surgery in cases of recurrence/metachronous gastric cancer, and LSNNS had better long-term QOL and nutrition than LSG.

J Clin Oncol 40:2342-2351. © 2022 by American Society of Clinical Oncology

Creative Commons Attribution Non-Commercial No Derivatives 4.0 License 

## INTRODUCTION

Gastric cancer is a common malignancy and a leading cause of cancer death globally.<sup>1</sup> In areas where gastric cancer incidence is relatively high, the proportion of early gastric cancer (EGC) is increasing because of well-organized screening programs.<sup>2</sup> Consequently, gastric cancer survival in these regions is the highest worldwide.<sup>3</sup>

Patients with EGC are generally treated with laparoscopic standard gastrectomy (LSG), consisting of gastrectomy with lymph node dissection (LND) and GI reconstruction.<sup>4,6</sup> The survival rate in patients with EGC is  $> 95\%$ . However, quality of life (QOL) in these long-term survivors is impaired because of postgastrectomy symptoms.<sup>7</sup>

To reduce postgastrectomy symptoms, endoscopic resection (ER) is becoming popular in patients with

minimal risk of lymph node metastasis (LNM).<sup>8</sup> However, the indications for ER are limited. Laparoscopic sentinel node navigation surgery (LSNNS) has been suggested as an option that would allow for the omission of perigastric LND and the preservation of much of the stomach, after primary tumor resection, in cases in which sentinel node biopsy (SNB) shows negative results.<sup>9</sup> Consequently, postgastrectomy symptoms can be prevented, and QOL can be improved in long-term survivors.<sup>10</sup>

However, two relatively large-scale multicenter studies and many single-center studies have reported contradictory results concerning the feasibility of SNB for EGC.<sup>11-13</sup> The high false-negative rate reported by a Japanese study is an obstacle to the clinical adoption of SNB.<sup>12</sup> However, another Japanese study reported a high rate of accuracy, which is promising.<sup>13</sup> A phase II

## ASSOCIATED CONTENT

### Appendix

### Protocol

Author affiliations and support information (if applicable) appear at the end of this article.

Accepted on February 17, 2022 and published at [ascopubs.org/journal/jco](https://ascopubs.org/journal/jco) on March 24, 2022; DOI <https://doi.org/10.1200/JCO.21.02242>

## CONTEXT

### Key Objective

Laparoscopic sentinel node navigation surgery (LSNNS) has been suggested to improve quality of life (QOL) by stomach preservation in long-term survivors from early gastric cancer. This study was performed to prove the noninferiority of LSNNS to laparoscopic standard gastrectomy (LSG) in terms of 3-year disease-free survival (3y-DFS) and to compare QOL in 580 patients. This study, to our knowledge, was the first prospective multicenter randomized controlled trial on this issue.

### Knowledge Generated

The 3y-DFS in the LSG and LSNNS groups was 95.5% and 91.8%, respectively (difference: 3.7%; 95% CI, -0.6 to 8.1). The LSNNS group showed better physical function, less symptoms, and improved nutrition than the LSG group.

### Relevance

LSNNS did not show noninferiority to LSG for 3y-DFS, with a 5% margin, although better long-term QOL and nutrition. Clinical application of LSNNS should be cautious considering the survival and QOL.

study of LSNNS in South Korea also found this procedure to be feasible in patients with EGC. However, a randomized controlled trial is warranted.<sup>14</sup>

The SEntinel Node ORiented Tailored Approach (SENORITA) trial was a phase III, multicenter, randomized, controlled clinical trial conducted in South Korea to compare postoperative complications, long-term survival, and QOL after LSNNS and LSG.

## METHODS

### Study Design and Patients

This study was a prospective multicenter randomized controlled trial conducted at seven institutions in South Korea.<sup>15</sup> Patients age between 20 and 80 years, with an Eastern Cooperative Oncology Group performance status score of 0 or 1, were eligible if they had histologically proven gastric adenocarcinoma, were preoperatively classified as stage IA by endoscopy and computed tomography, and/or endoscopic ultrasonography according to the American Joint Committee on Cancer (seventh edition) criteria, and were scheduled for curative laparoscopic surgery.<sup>16</sup> Additional inclusion criteria were tumor size  $\leq 3$  cm and location  $> 2$  cm from the cardia or pylorus, regardless of histologic type. Exclusion criteria were absolute indications for ER: tumor size  $< 2$  cm, mucosal lesion, and differentiated histology.<sup>4</sup> Patients with synchronous gastric cancer or malignancies in other organs, those who had undergone preoperative chemotherapy or radiotherapy, those who had undergone upper abdominal surgery (except laparoscopic cholecystectomy), those who were pregnant or had a history of mental illness, and those with other malignancies within 5 years were also excluded. This trial was approved by the Institutional Review Board of each institution and was conducted in accordance with the principles of the Declaration of Helsinki.<sup>17</sup> Written informed consent was obtained from all patients before enrollment. An

independent data monitoring committee reviewed the progress of the trial.

The study design was finalized after discussion with all coinvestigators, and the study was supported by a grant from the National Cancer Center, Korea. All participating coinvestigators enrolled patients, performed surgery, and collected and analyzed data. All authors assert that all procedures and data collection and analysis strictly followed the study protocols. This article was drafted by the last author in consultation with all other authors, and all authors agreed to submit the article for publication. This trial was registered at ClinicalTrials.gov on March 5, 2013 (ClinicalTrials.gov identifier: [NCT01804998](https://clinicaltrials.gov/ct2/show/study/NCT01804998)). The first patient was enrolled on March 27, 2013.

### Random Assignment and Masking

Before surgery, the enrolled patients were randomly assigned to undergo LSG or LSNNS in a 1:1 ratio. The stratification factors were tumor depth (mucosa *v* submucosa), tumor size ( $\leq 2$  *v*  $> 2$  cm), and institution. The enrolled patients were registered at the Clinical Research Coordination Center within the National Cancer Center in South Korea through a web-based clinical trial management system<sup>18</sup> (eVelos System; Velos, Fremont, CA). Random assignment was performed by Velos, and the assignments were communicated to the surgeons and patients. Surgeon blinding of random assignment did not occur because of the surgical nature of the trial, and the Institutional Review Boards did not recommend patient blinding because of patient rights.

### Procedures

Surgery was performed within 6 weeks after random assignment. In the LSG group, several types of laparoscopic gastrectomies were performed with lymphadenectomy in accordance with the Korean guidelines.<sup>4</sup> In the LSNNS group, stomach-preserving surgeries (intraoperative ER, endoscopic full-thickness resection, wedge resection, and

segmental resection) were performed in cases involving negative SNB results, as previously described with proposed indications.<sup>19</sup> Dual indocyanine green (2 mL, 5 mg Diagnogreen; Daiichi-Sankyo, Tokyo, Japan) and Technetium-99m human serum albumin (2 mL, 0.1 mCi/mL) tracers were intraoperatively injected submucosally to detect sentinel nodes.<sup>15</sup> SNB was performed by basin dissection instead of pick-up biopsy to minimize false-negatives. Sentinel basin was defined within 2 cm margin from detected hot or green nodes, not lymph node station. Standard surgery was performed in cases with positive SNB findings and negative SNB results if stomach-preserving surgery was technically difficult. Postoperative surveillance (endoscopy, computed tomography, tumor marker analysis, and basic laboratory tests) was performed every 6 months for 3 years and then annually for 2 years.<sup>15</sup> Data from patients lost to follow-up and those who withdrew from the trial were censored at the last surveillance visit.

Pathologic staging was performed according to the American Joint Committee on Cancer/Union for International Cancer Control (seventh edition) criteria. Histologic evaluation was performed according to the WHO classification.<sup>20</sup> The pathologic protocol for intraoperative and postoperative examination has been previously described.<sup>21</sup> All harvested sentinel basin nodes (SBNs) from the LSNNS group were sectioned at 2-mm intervals parallel to the long axis and evaluated intraoperatively with hematoxylin and eosin staining. Any SBNs with tumor cells were classified as positive, regardless of the size of metastatic foci. Resected primary tumors were also evaluated for margin involvement using frozen sections. In cases of primary tumor margin involvement, further resection was performed until negative margins were achieved. Postoperatively, all SBNs were evaluated again using hematoxylin and eosin staining, and cytokeratin immunohistochemistry was conducted on additional sections from paraffin blocks. Primary tumor resection margins were also evaluated again with sections from paraffin blocks. Additional surgery was recommended after LSNNS in cases of postoperative findings with (1) cancer cells in SBNs in the form of macrometastases measuring > 2 mm, (2) tumor involvement of margin of resected specimen, and (3) pT2 or deeper lesions.<sup>15</sup> In the LSG group, postoperative pathologic evaluation of harvested lymph nodes was performed using hematoxylin and eosin staining of a representative section taken along the long axis.

### Outcomes

The primary outcome was the 3-year disease-free survival (3y-DFS) rate. DFS was defined as the time from surgery to gastric cancer recurrence, development of metachronous gastric cancer in the residual stomach, development of cancer in other organs, or death from any cause, after surgery. Secondary outcomes included the 3-year disease-specific survival (3y-DSS) and 3-year overall survival (3y-OS) rates. DSS was defined as the time from surgery to

gastric cancer-related death, and OS was defined as the time from surgery to death from any cause. Other secondary outcomes were postoperative complications and QOL.

### QOL and Nutritional Parameters

The QOL was assessed using the European Organization for Research and Treatment of Cancer Quality of the Life Questionnaire Core 30 (EORTC QLQ-C30) and EORTC stomach module (STO22) at 3, 12, 24, and 36 months after surgery. Nutritional parameters of body mass index, hemoglobin, and total protein were also measured simultaneously.

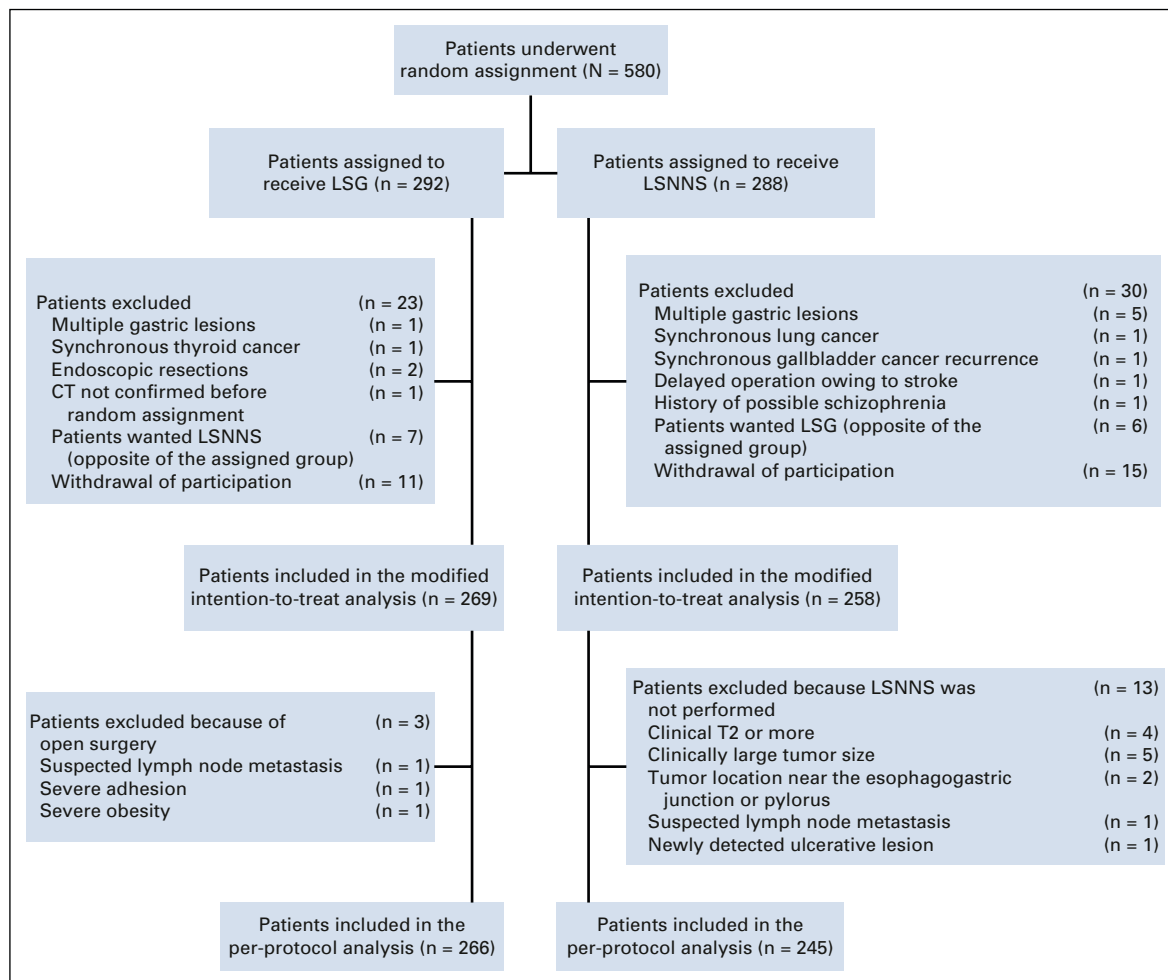
### Statistical Analyses

On the basis of an expected 3y-DFS rate of 97% in the LSG group, a noninferiority margin of 5%, a type I error of 5%, a power of 80%, an expected recruitment period of 4 years, and a follow-up surveillance period of 3 years from the enrollment of the last patient, 261 patients were needed in each group, with 24 target events. Assuming a 10% dropout rate, 290 patients were needed in each group (total, 580). One interim analysis was performed after 12 events (50%) had occurred. Using the O'Brien-Fleming alpha spending function, the two-sided nominal significance level for the interim analysis was 0.0054. Full analysis was performed mainly in the modified intention-to-treat population and, additionally, in the per-protocol population. Survival was evaluated using the Cox proportional hazards model and log-rank test. The Kaplan-Meier method was used for survival estimation. Statistical analyses were conducted using STATA software version 16.0 (STATA Corp, College Station, TX) and SAS software version 9.4 (SAS Institute Inc, Cary, NC). The linear mixed model was used to evaluate QOL.

## RESULTS

### Patients

A total of 580 patients were randomly assigned after screening from March 27, 2013, to December 28, 2016 (Fig 1). Of these, 527 were included in the modified intention-to-treat population (269, LSG group; 258, LSNNS group) after 53 patients were excluded. The most common reasons for exclusion were withdrawal from the trial (n = 26) and patient desire to switch to the nonassigned surgery (n = 13). Surgery was performed in 511 patients according to the protocol, and these patients made up the per-protocol population. Open surgery was performed instead of laparoscopic surgery in three patients in the LSG group. Standard surgery was performed in 13 patients in the LSNNS group because the intraoperative findings were inconsistent with the preoperative workup. The patient and tumor characteristics were comparable between the LSG and LSNNS groups (Table 1). Among the 245 patients in the LSNNS group, treated according to the protocol, stomach-preserving surgery (210 patients) and standard surgery were performed (35 patients). The median duration



**FIG 1.** CONSORT diagram (study protocol: enrollment, random assignment, and follow-up). Three-year disease-free survival was evaluated in the modified intention-to-treat population. Secondary end points (3-year disease-specific survival and overall survival) were also evaluated in this population. CT, computed tomography; LSG, laparoscopic standard gastrectomy; LSNNS, laparoscopic sentinel node navigation surgery.

of follow-up was 48.1 months (interquartile range, 41.5–58.7 months; maximum, 62.2 months).

### Primary Outcome

During the median follow-up of 48.1 months, the 3y-DFS rate was 95.5% in the LSG group and 91.8% in the LSNNS group (difference, 3.7%; 95% CI, –0.6 to 8.1; Fig 2). The disease events are listed in Table 2, and more detailed information regarding patients with recurrence is listed in Appendix Table A1 (online only), including precise pathologic information from the initial surgery.

Primary tumor site recurrence occurred in two patients in the LSNNS group after laparoscopic wedge resection, and both were treated with standard laparoscopic distal gastrectomy. Lymph node recurrence occurred in one patient after laparoscopic wedge resection with sentinel basin dissection (Appendix Fig A1, online only). Standard laparoscopic distal gastrectomy was performed in this patient, followed by adjuvant chemotherapy. Distant metastasis was

detected and treated with palliative chemotherapy in two patients in each group.

Five patients in the LSNNS group developed metachronous gastric cancer in the residual stomach after laparoscopic wedge resection. Depending on the characteristics and location of metachronous cancer, ER or standard gastrectomy was performed.

Fourteen patients in the entire cohort developed malignancies in other organs. Four patients in the LSNNS group died: two from accidents, one from liver cirrhosis, and one from sepsis secondary to urinary tract infection. One patient in the LSG group died after laparoscopic distal gastrectomy from sepsis due to duodenal stump leakage.

### Secondary Outcomes

During the follow-up, the 3y-DSS rate was 99.5% (95% CI, 96.7 to 99.3) in the LSG group and 99.1% (95% CI, 96.4 to 99.8) in the LSNNS group ( $P = .59$ ; Fig 3). One patient in

**TABLE 1.** Patient and Tumor Characteristics and Postoperative Results

Variable	Modified Intention-to-Treat Population		Per-Protocol Population	
	LSG (n = 269)	LSNNS (n = 258)	LSG (n = 266)	LSNNS (n = 245)
Age, years, mean (range)	56 (26-80)	55 (26-80)	56 (26-80)	55 (26-80)
Male, No. (%)	143 (53)	153 (59)	140 (53)	147 (60)
BMI, kg/m <sup>2</sup> , mean (range)	24 (17-40)	23 (14-35)	24 (17-40)	23 (14-35)
ECOG PS, No. (%)				
0	265 (99)	253 (98.1)	265 (98.5)	240 (98.1)
1	4 (2)	5 (1.9)	4 (1.5)	5 (2.0)
Longitudinal tumor location, No. (%) <sup>a</sup>				
Upper	17 (6)	14 (5.4)	17 (6.4)	14 (5.7)
Middle	155 (58)	157 (60.9)	153 (57.5)	147 (60.0)
Lower	97 (36)	87 (33.7)	96 (36.1)	84 (34.3)
Circumferential tumor location, No. (%)				
Anterior wall	47 (18)	41 (15.9)	47 (17.7)	39 (15.9)
Greater curvature	82 (31)	82 (31.8)	82 (30.8)	81 (33.1)
Lesser curvature	100 (37)	86 (33.3)	98 (36.8)	81 (33.1)
Posterior wall	40 (15)	49 (19.0)	39 (14.7)	44 (18.0)
Preoperative histologic classification, No. (%) <sup>b</sup>				
Tubular adenocarcinoma	174 (65)	149 (57.8)	172 (64.7)	143 (58.4)
Signet ring cell carcinoma	95 (35)	108 (41.9)	94 (35.3)	101 (41.2)
Adenocarcinoma in situ	0 (0)	1 (0.4)	0 (0.0)	1 (0.4)
Clinical tumor size, cm, mean (range)	2 (0-3)	1.7 (0.3-3.0)	1.9 (0.2-3.0)	1.7 (0.3-3.0)
Clinical tumor depth, No. (%)				
Mucosa	179 (67)	171 (66.3)	177 (66.5)	164 (66.9)
Submucosa	90 (34)	87 (33.7)	89 (33.5)	81 (33.1)
Type of operation, No. (%)				
Lapa distal gastrectomy	217 (81)	40 (15.5)	217 (81.6)	28 (11.4)
Lapa total gastrectomy	10 (4)	4 (1.6)	10 (3.8)	3 (1.2)
Lapa pylorus-preserving gastrectomy	28 (10)	3 (1.2)	28 (10.5)	3 (1.2)
Lapa proximal gastrectomy	8 (3)	0 (0)	8 (3)	0 (0)
Open distal gastrectomy	4 (2)	1 (0)	1 (0)	1 (0)
Open total gastrectomy	2 (1)	0 (0)	2 (1)	0 (0)
Lapa wedge resection without EFTR	0 (0)	179 (69)	0 (0)	179 (73)
Lapa wedge resection with EFTR	0 (0)	11 (4)	0 (0)	11 (5)
Lapa segmental resection	0 (0)	18 (7)	0 (0)	18 (7)
Endoscopic submucosal dissection	0 (0)	2 (1)	0 (0)	2 (1)
Pathologic tumor stage, No. (%)				
pT1a	161 (60)	154 (60)	158 (60)	147 (60)
pT1b	84 (31)	88 (34)	84 (32)	84 (34)
pT2	16 (6)	9 (4)	16 (6)	9 (4)
pT3	6 (2)	7 (3)	6 (2)	5 (2)
pT4a	1 (0)	0 (0)	1 (1)	0 (0)
Pathologic tumor size, cm, mean (range)	2 (0-14)	2 (0-8)	2 (0-9)	2 (0-8)

(continued on following page)

**TABLE 1.** Patient and Tumor Characteristics and Postoperative Results (continued)

Variable	Modified Intention-to-Treat Population		Per-Protocol Population	
	LSG (n = 269)	LSNNS (n = 258)	LSG (n = 266)	LSNNS (n = 245)
Pathologic nodal stage, No. (%)				
pN0	244 (91)	225 (87)	241 (91)	215 (88)
pN1 (1-2 nodes)	15 (6)	24 (9)	15 (6)	23 (9)
pN2 (3-6 nodes)	7 (3)	6 (2)	7 (3)	4 (2)
pN3a (7-15 nodes)	2 (1)	3 (1)	2 (1)	3 (1)
Pathologic tumor stage, No. (%)				
IA	226 (84)	217 (84)	223 (84)	208 (85)
IB	28 (10)	24 (9)	28 (11)	23 (9)
IIA	9 (3)	10 (4)	9 (3)	8 (3)
IIB	2 (1)	5 (2)	2 (1)	5 (2)
IIIA	1 (0)	1 (0)	1 (0)	0 (0)
IIIB	2 (1)	1 (0)	2 (1)	1 (0)

Abbreviations: BMI, body mass index; ECOG PS, Eastern Cooperative Oncology Group performance status; EFTR, endoscopic full-thickness resection; Lapa, laparoscopic; LSG, laparoscopic standard gastrectomy; LSNNS, laparoscopic sentinel node navigation surgery.

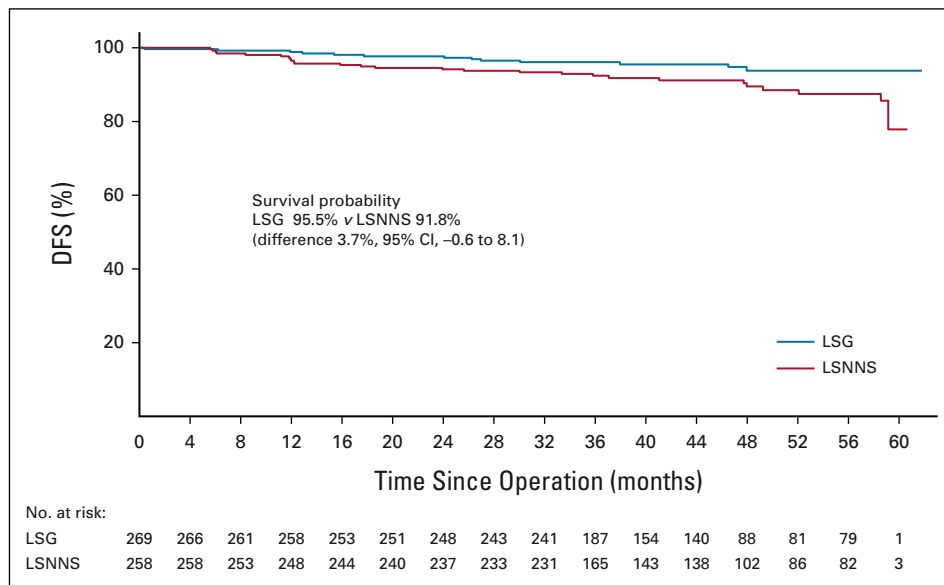
<sup>a</sup>Tumor location was classified according to the Japanese classification of gastric carcinoma.

<sup>b</sup>Tumor histologic classification was performed according to the WHO criteria.

the LSNNS group with lymph node recurrence ultimately developed liver metastasis and died, even after curative laparoscopic distal gastrectomy and chemotherapy. One patient in the LSNNS group with para-aortic LNM after curative laparoscopic gastrectomy (positive SNB findings) also died after palliative chemotherapy. There were no other disease-specific deaths in the LSNNS group after rescue surgery for recurrence or metachronous gastric

cancer. One postoperative death in the LSG group, due to sepsis, was recorded as a disease-specific death.

The 3y-OS rate was 99.2% (95% CI, 96.6 to 99.8) in the LSG group and 97.6% (95% CI, 94.6 to 98.9) in the LSNNS group ( $P = .17$ ; Fig 4). One patient in the LSG group developed metachronous lymphoma after gastric cancer surgery and died after being treated with chemotherapy. Four patients in the LSNNS group died.



**FIG 2.** Three-year disease-free survival after surgery in the two trial groups: modified intention-to-treat analysis. DFS, disease-free survival; LSG, laparoscopic standard gastrectomy; LSNNS, laparoscopic sentinel node navigation surgery.



**TABLE 2.** Three-Year Disease-Free Survival Events

Event	LSG (n = 11)	LSNNS (n = 20)
Primary tumor recurrence	0	2 (LW → LDG)
Lymph node recurrence	0	1 (LW → LDG and adjuvant chemotherapy)
Distant metastasis		
LDG → palliative chemotherapy	2	1
LW → palliative chemotherapy	0	1
Metachronous gastric cancer		
LW → ESD	0	1
LW → LDG	0	2
LW → LTG	0	2
Cancers in other organs		
Lung	3	2
Colon	1	1
Prostate	1	1
Thyroid	1	1
Breast	0	1
Gallbladder	1	0
Lymphoma	1	0
Other deaths		
Postoperative mortality (LDG)	1	0
Accidents	0	2
Sepsis (UTI)	0	1
Liver cirrhosis	0	1

NOTE. Data are No. of patients.

Abbreviations: ESD, endoscopic submucosal dissection; LDG, laparoscopic distal gastrectomy; LSG, laparoscopic standard gastrectomy; LSNNS, laparoscopic sentinel node navigation surgery; LTG, laparoscopic total gastrectomy; LW, laparoscopic wedge resection; UTI, urinary tract infection.

Postoperative complications occurred in 51 patients in the LSG group (19.0%) and 40 (15.5%) in the LSNNS group ( $P = .294$ ). Complication with a Clavien-Dindo grade of III or higher occurred in 16 (5.9%) and 13 (5.0%) patients in the LSG and LSNNS groups, respectively ( $P = .647$ ).

The LSNNS group had a better physical function score than the LSG group in scales of EORTC-C30 ( $P = .015$ ; Appendix Figs A2 and A3, online only). Regarding the EORTC QLQ-STO22, pain, eating restriction, anxiety, and taste were better in the LSNNS group than in the LSG group ( $P = .024$ ,  $< .001$ ,  $< .009$ , and  $< .010$ , respectively; Appendix Fig A4, online only). The summary score of EORTC QLQ-STO22 was also better in the LSNNS group ( $P < .001$ ; Appendix Fig A5, online only). Body mass index, hemoglobin, and total protein were significantly higher in the LSNNS group ( $P < .001$ ,  $P < .001$ ,  $P < .001$ , respectively).

## DISCUSSION

In this prospective multicenter trial, LSNNS did not show noninferiority to LSG for 3y-DFS with a 5% margin.

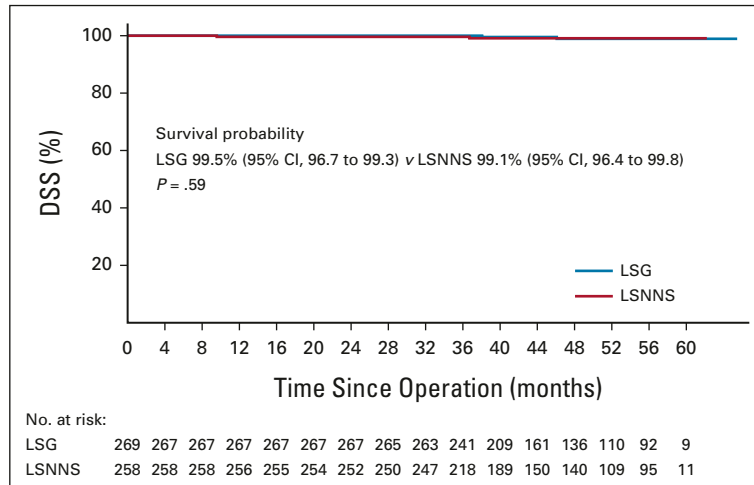
However, after rescue surgery for recurrence or metachronous gastric cancer in the LSNNS group, 3y-DSS and 3y-OS were not different in both groups. Conditions requiring rescue surgery are not life-threatening and can be resolved in most cases after stomach-preserving LSNNS.

The results of previous studies on the feasibility and safety of stomach-preserving LSNNS in patients with EGC are controversial. Numerous small single-center trials found a wide range of SNB false-negative rates and produced inconsistent results.<sup>11,22,23</sup> Two relatively large multicenter trials from Japan also reported contradictory results.<sup>12,13</sup> In their multicenter feasibility study, Miyashiro et al<sup>12</sup> reported a high false-negative rate of 46%, mainly because of problems with intraoperative histologic examination, which is an obstacle for the clinical adoption of LSNNS. In another multicenter feasibility study, Kitagawa et al<sup>13</sup> reported a low false-negative rate of 7%, which is encouraging. Analysis of the four false-negative cases in their study showed that most cases involved tumors that had invaded the muscle layer and were  $> 4$  cm in diameter. They also found that the missed metastatic lymph nodes were located at the same sentinel basin and, therefore, recommended sentinel basin dissection to reduce the SNB false-negative rate. In this study, one patient had lymph node recurrence after sentinel basin dissection, resulting in a false-negative rate of 3.2%. This patient was treated using rescue surgery and adjuvant chemotherapy. However, the patient developed distant metastasis and ultimately died.

There are doubts about the curative ability of primary tumor resection by ER, wedge resection, and segmental resection compared with that of standard gastrectomy. Park et al<sup>14</sup> investigated 100 patients who underwent LSNNS in the phase II study and reported a 3-year relapse-free survival rate of 96.0%. In that study, there were three cases of intragastric recurrence; one patient refused rescue surgery, developed distant metastasis, and died of liver metastasis.

Another important issue is the development of metachronous gastric cancer in the residual stomach after stomach-preserving surgery. In some patients in the previous study, metachronous gastric cancer developed during the follow-up period after ER when the whole stomach was preserved; its incidence is non-negligible, and close monitoring and additional treatment are required.<sup>24</sup> Several factors, such as *Helicobacter pylori* infection, have been reported to be related to the development of metachronous gastric cancer after ER, and it has been hypothesized that these factors also exist after stomach-preserving LSNNS.<sup>25</sup>

In this study, the conversion rate to gastrectomy after stomach-preserving LSNNS was 9% (19/210). The reasons for gastrectomy were risk of advanced disease, according to the protocol, in 10 patients; stenosis in two patients; recurrence in three patients; and metachronous gastric cancer in four patients.<sup>5,26</sup> Considering that the gastrectomy



**FIG 3.** Three-year disease-specific survival after surgery in the two trial groups: modified intention-to-treat analysis. DSS, disease-specific survival; LSG, laparoscopic standard gastrectomy; LSNNs, laparoscopic sentinel node navigation surgery.

conversion rate is 12%-28% after ER, LSNNs may be another acceptable option for stomach preservation.<sup>27,28</sup>

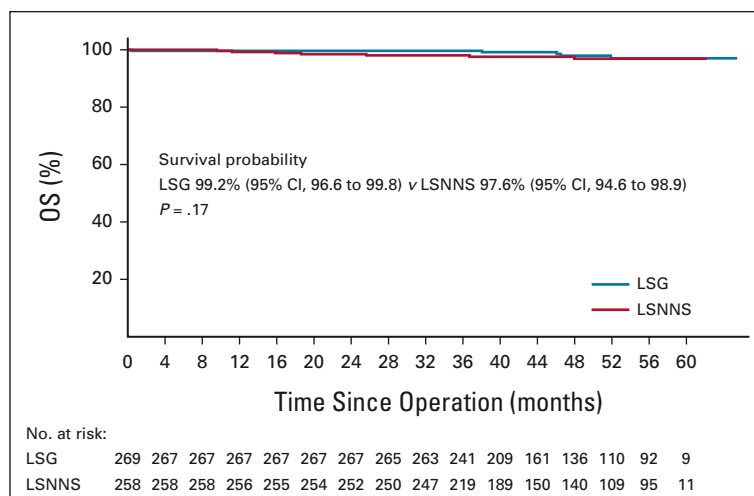
The postoperative complications showed similar results between the LSNNs and LSG groups.<sup>26</sup> Although the reduced range of LND and gastric resection of LSNNs, thorough surgical techniques and learning curves are required as the LSG.

Several function-preserving surgeries have undergone trials. However, their ability to improve QOL remains controversial.<sup>29</sup> Therefore, the main objective of stomach-preserving LSNNs is the improvement in QOL after gastrectomy in patients with EGC. The QOL of the LSNNs group showed better physical function and many postoperative symptoms. Not only QOL but also nutritional

parameters were also improved after LSNNs than LSG as expected.

Widespread adoption of a new procedure, such as LSNNs, is another issue in real-world clinical practice. There is a learning curve for new procedures, and quality assurance is necessary for safety.<sup>30,31</sup> Before our multicenter phase III trial, all investigating institutions participated in a quality control study to overcome the learning curve and standardize the procedure. This process is necessary and facilitates the general adoption of this new procedure by surgeons.

This study has several limitations. First, the eligibility criteria of this trial included the expanded indications for ER, which were previously defined.<sup>4,5</sup> Therefore, more patients with



**FIG 4.** Three-year overall survival after surgery in the two trial groups: modified intention-to-treat analysis. LSG, laparoscopic standard gastrectomy; LSNNs, laparoscopic sentinel node navigation surgery; OS, overall survival.



EGC, who meet the expanded indications for ER, should have been included in this study. Second, patients in whom LSNNS is indicated are mainly concentrated in areas with a high prevalence of EGC. Therefore, the practice of LSNNS may be limited geographically. Third, full analysis was performed mainly in the modified intention-to-treat population instead of intention-to-treat because most of the excluded patients did not receive the surgery.

In conclusion, LSNNS did not show noninferiority to LSG for 3y-DFS, with a 5% margin. However, after rescue surgery for recurrence or metachronous gastric cancer in the LSNNS group, 3y-DSS and 3y-OS were not different between the two groups. In addition, LSNNS had better long-term QOL and nutrition than LSG. The intense and sophisticated follow-up is mandatory to adopt LSNNS.

## AFFILIATIONS

<sup>1</sup>Center of Gastric Cancer, National Cancer Center, Goyang, Korea

<sup>2</sup>Department of Surgery, Dongnam Institute of Radiological and Medical Sciences, Cancer Center, Busan, Korea

<sup>3</sup>Department of Surgery, Yonsei University College of Medicine, Seoul, Korea

<sup>4</sup>Current Affiliation: Department of Surgery, Samsung Medical Center, Sungkyunkwan University School of Medicine, Seoul, Korea

<sup>5</sup>Department of Surgery, Ajou University School of Medicine, Suwon, Korea

<sup>6</sup>Department of Surgery, Gyeongsang National University, Jinju, Korea

<sup>7</sup>Department of Surgery, Soonchunhyang University College of Medicine, Bucheon, Korea

<sup>8</sup>Department of Surgery, Chonnam National University Hwasun Hospital, Hwasun, Korea

<sup>9</sup>Biostatistics Collaboration Team, National Cancer Center, Goyang, Korea

<sup>10</sup>Department of Cancer Control and Policy, Graduate School of Cancer Science and Policy, National Cancer Center, Goyang, Korea

<sup>11</sup>Current Affiliation: Clinical Design Research Center, HERINGS The Institution of Advanced Clinical & Biomedical Research, Seoul, Korea

## CORRESPONDING AUTHOR

Keun Won Ryu, MD, PhD, Center for Gastric Cancer, Research Institute & Hospital, National Cancer Center, 323 Ilsan-ro, Ilsandong-gu, Goyang-si, Gyeonggi-do 10408, Republic of Korea; e-mail: docryu@ncc.re.kr.

## DISCLAIMER

The sponsor had no role in the study design, data collection, analysis and interpretation of data, the writing of the report, or the decision to submit the paper for publication.

## PRIOR PRESENTATION

Presented in part at the 2020 ASCO annual meeting, virtual, May 29, 2020; and at the 2021 ASCO annual meeting, virtual, June 4, 2021.

## REFERENCES

1. Bray F, Ferlay J, Soerjomataram I, et al: Global cancer statistics 2018: GLOBOCAN estimates of incidence and mortality worldwide for 36 cancers in 185 countries. *CA Cancer J Clin* 68:394-424, 2018
2. Jun JK, Choi KS, Lee HY, et al: Effectiveness of the Korean National Cancer Screening Program in reducing gastric cancer mortality. *Gastroenterology* 152: 1319-1328, 2017
3. Allemani C, Matsuda T, Di Carlo V, et al.: Global surveillance of trends in cancer survival 2000-14 (CONCORD-3): Analysis of individual records for 37 513 025 patients diagnosed with one of 18 cancers from 322 population-based registries in 71 countries. *Lancet* 391:1023-1075, 2018
4. Guideline Committee of the Korean Gastric Cancer Association (KGCA), Development Working Group & Review Panel: Korean practice guideline for gastric cancer 2018: An evidence-based, multi-disciplinary approach. *J Gastric Cancer* 19:1-48, 2019
5. Japanese Gastric Cancer Association: Japanese gastric cancer treatment guidelines 2018 (5th edition). *Gastric Cancer* 24:1-21, 2021
6. Ajani JA, D'Amico TA, Almhanna K, et al: Gastric cancer, version 3.2016, NCCN clinical practice guidelines in oncology. *J Natl Compr Canc Netw* 14: 1286-1312, 2016

## SUPPORT

Supported by the National Cancer Center, Republic of Korea (grant numbers 1110550, 1410140, 1710160, and 2010150).

## CLINICAL TRIAL INFORMATION

NCT01804998 (MPTLSNB)

## AUTHORS' DISCLOSURES OF POTENTIAL CONFLICTS OF INTEREST

Disclosures provided by the authors are available with this article at DOI <https://doi.org/10.1200/JCO.21.02242>.

## DATA SHARING STATEMENT

The datasets used and/or analyzed during the current study are available from the corresponding author on reasonable request.

## AUTHOR CONTRIBUTIONS

**Conception and design:** Young-Woo Kim, Jae-Seok Min, Ji Yeong An, Young-Kyu Park, Byung-Ho Nam, Keun Won Ryu

**Administrative support:** Jae-Seok Min

**Provision of study materials or patients:** Young-Woo Kim, Jae-Seok Min, Hoon Hur, Mi Ran Jung, Ji-Ho Park, Woo Jin Hyung

**Collection and assembly of data:** Young-Woo Kim, Jae-Seok Min, Hong Man Yoon, Ji Yeong An, Bang Wool Eom, Hoon Hur, Young Joon Lee, Gyu Seok Cho, Young-Kyu Park, Mi Ran Jung, Ji-Ho Park, Woo Jin Hyung, Sang-Ho Jeong, Myeong-Cherl Kook, Byung-Ho Nam, Keun Won Ryu

**Data analysis and interpretation:** Young-Woo Kim, Jae-Seok Min, Young-Kyu Park, Mira Han, Byung-Ho Nam, Keun Won Ryu

**Manuscript writing:** All authors

**Final approval of manuscript:** All authors

**Accountable for all aspects of the work:** All authors

## ACKNOWLEDGMENT

We thank the patients, their families, and all the investigators, coinvestigators, nurses, and study teams at the seven centers in South Korea. We also thank Editage ([www.editage.com](http://www.editage.com)) for their editing support.

7. Lee SS, Chung HY, Kwon OK, et al: Long-term quality of life after distal subtotal and total gastrectomy: Symptom- and behavior-oriented consequences. *Ann Surg* 263:738-744, 2016
8. Kim YI, Kim YW, Choi IJ, et al: Long-term survival after endoscopic resection versus surgery in early gastric cancers. *Endoscopy* 47:293-301, 2015
9. Kitagawa Y, Fujii H, Mukai M, et al: The role of the sentinel lymph node in gastrointestinal cancer. *Surg Clin North Am* 80:1799-1809, 2000
10. Okubo K, Arigami T, Matsushita D, et al: Evaluation of postoperative quality of life by PGSAS-45 following local gastrectomy based on the sentinel lymph node concept in early gastric cancer. *Gastric Cancer* 23:746-753, 2020
11. Ryu KW, Eom BW, Nam BH, et al: Is the sentinel node biopsy clinically applicable for limited lymphadenectomy and modified gastric resection in gastric cancer? A meta-analysis of feasibility studies. *J Surg Oncol* 104:578-584, 2011
12. Miyashiro I, Hiratsuka M, Sasako M, et al: High false-negative proportion of intraoperative histological examination as a serious problem for clinical application of sentinel node biopsy for early gastric cancer: Final results of the Japan Clinical Oncology Group multicenter trial JCOG0302. *Gastric Cancer* 17:316-323, 2014
13. Kitagawa Y, Takeuchi H, Takagi Y, et al: Sentinel node mapping for gastric cancer: A prospective multicenter trial in Japan. *J Clin Oncol* 31:3704-3710, 2013
14. Park DJ, Park YS, Son SY, et al: Long-term oncologic outcomes of laparoscopic sentinel node navigation surgery in early gastric cancer: A single-center, single-arm, phase II trial. *Ann Surg Oncol* 25:2357-2365, 2018
15. Park JY, Kim YW, Ryu KW, et al: Assessment of laparoscopic stomach preserving surgery with sentinel basin dissection versus standard gastrectomy with lymphadenectomy in early gastric cancer—A multicenter randomized phase III clinical trial (SENorITA trial) protocol. *BMC Cancer* 16:340, 2016
16. Washington K: 7th edition of the AJCC cancer staging manual: Stomach. *Ann Surg Oncol* 17:3077-3079, 2010
17. World Medical Association: World Medical Association declaration of Helsinki: Ethical principles for medical research involving human subjects. *JAMA* 310:2191-2194, 2013
18. Velos eResearch. <http://eresearch.ncc.re.kr/velos/jsp/ereslogin.jsp>
19. Park JY, Ryu KW, Eom BW, et al: Proposal of the surgical options for primary tumor control during sentinel node navigation surgery based on the discrepancy between preoperative and postoperative early gastric cancer diagnoses. *Ann Surg Oncol* 21:1123-1129, 2014
20. Kleihues P, Sobin LH: World Health Organization classification of tumors. *Cancer* 88:2887, 2000
21. Park JY, Kook MC, Eom BW, et al: Practical intraoperative pathologic evaluation of sentinel lymph nodes during sentinel node navigation surgery in gastric cancer patients—Proposal of the pathologic protocol for the upcoming SENORITA trial. *Surg Oncol* 25:139-146, 2016
22. Lips DJ, Schutte HW, van der Linden RL, et al: Sentinel lymph node biopsy to direct treatment in gastric cancer. A systematic review of the literature. *Eur J Surg Oncol* 37:655-661, 2011
23. Wang Z, Dong ZY, Chen JQ, et al: Diagnostic value of sentinel lymph node biopsy in gastric cancer: A meta-analysis. *Ann Surg Oncol* 19:1541-1550, 2012
24. Mori G, Nakajima T, Asada K, et al: Incidence of and risk factors for metachronous gastric cancer after endoscopic resection and successful Helicobacter pylori eradication: Results of a large-scale, multicenter cohort study in Japan. *Gastric Cancer* 19:911-918, 2016
25. Choi IJ, Kook MC, Kim YI, et al: Helicobacter pylori therapy for the prevention of metachronous gastric cancer. *N Engl J Med* 378:1085-1095, 2018
26. An JY, Min JS, Hur H, et al: Laparoscopic sentinel node navigation surgery versus laparoscopic gastrectomy with lymph node dissection for early gastric cancer: Short-term outcomes of a multicentre randomized controlled trial (SENorITA). *Br J Surg* 107:1429-1439, 2020
27. Hasuike N, Ono H, Boku N, et al: A non-randomized confirmatory trial of an expanded indication for endoscopic submucosal dissection for intestinal-type gastric cancer (cT1a): The Japan Clinical Oncology Group study (JCOG0607). *Gastric Cancer* 21:114-123, 2018
28. Abe S, Oda I, Suzuki H, et al: Short- and long-term outcomes of endoscopic submucosal dissection for undifferentiated early gastric cancer. *Endoscopy* 45:703-707, 2013
29. Saito T, Kurokawa Y, Takiguchi S, et al: Current status of function-preserving surgery for gastric cancer. *World J Gastroenterol* 20:17297-17304, 2014
30. Lee JH, Ryu KW, Lee SE, et al: Learning curve for identification of sentinel lymph node based on a cumulative sum analysis in gastric cancer. *Dig Surg* 26:465-470, 2009
31. Lee YJ, Jeong SH, Hur H, et al: Prospective multicenter feasibility study of laparoscopic sentinel basin dissection for organ preserving surgery in gastric cancer: Quality control study for surgical standardization prior to phase III trial. *Medicine* 94:e1894, 2015



#### **AUTHORS' DISCLOSURES OF POTENTIAL CONFLICTS OF INTEREST**

##### **Laparoscopic Sentinel Node Navigation Surgery for Stomach Preservation in Patients With Early Gastric Cancer: A Randomized Clinical Trial**

The following represents disclosure information provided by authors of this manuscript. All relationships are considered compensated unless otherwise noted. Relationships are self-held unless noted. I = Immediate Family Member, Inst = My Institution. Relationships may not relate to the subject matter of this manuscript. For more information about ASCO's conflict of interest policy, please refer to [www.asco.org/rwc](http://www.asco.org/rwc) or [ascopubs.org/jco/authors/author-center](http://ascopubs.org/jco/authors/author-center).

Open Payments is a public database containing information reported by companies about payments made to US-licensed physicians ([Open Payments](#)).

##### **Hoon Hur**

**Honoraria:** Johnson & Johnson Medical

**Research Funding:** AstraZeneca, Dong-A ST

##### **Woo Jin Hyung**

**Employment:** Hutom

**Leadership:** Hutom

**Stock and Other Ownership Interests:** Hutom

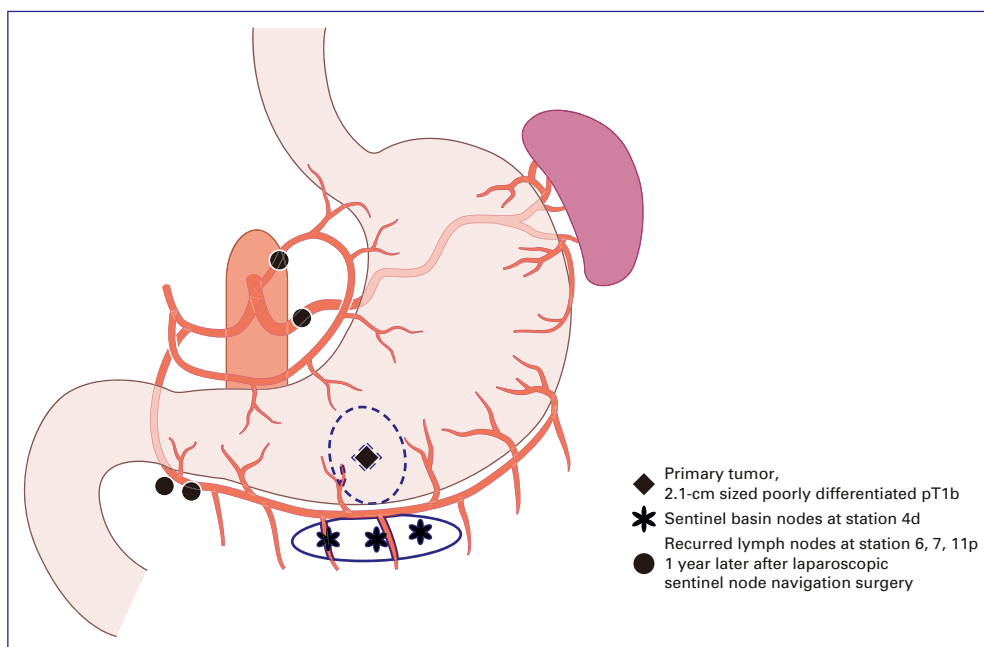
**Honoraria:** Ethicon/Johnson & Johnson

**Consulting or Advisory Role:** Ethicon, Verb Surgical

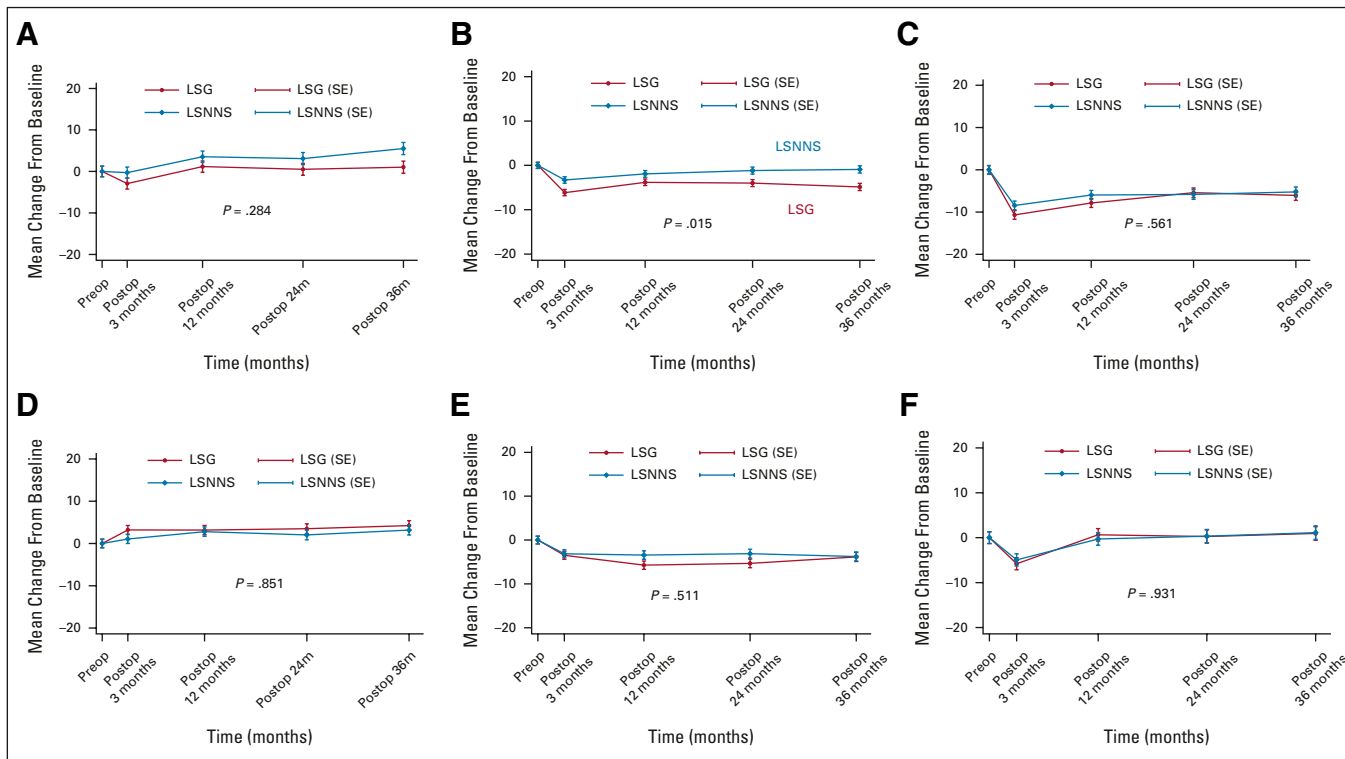
**Research Funding:** Medtronic, GC Pharma

No other potential conflicts of interest were reported.

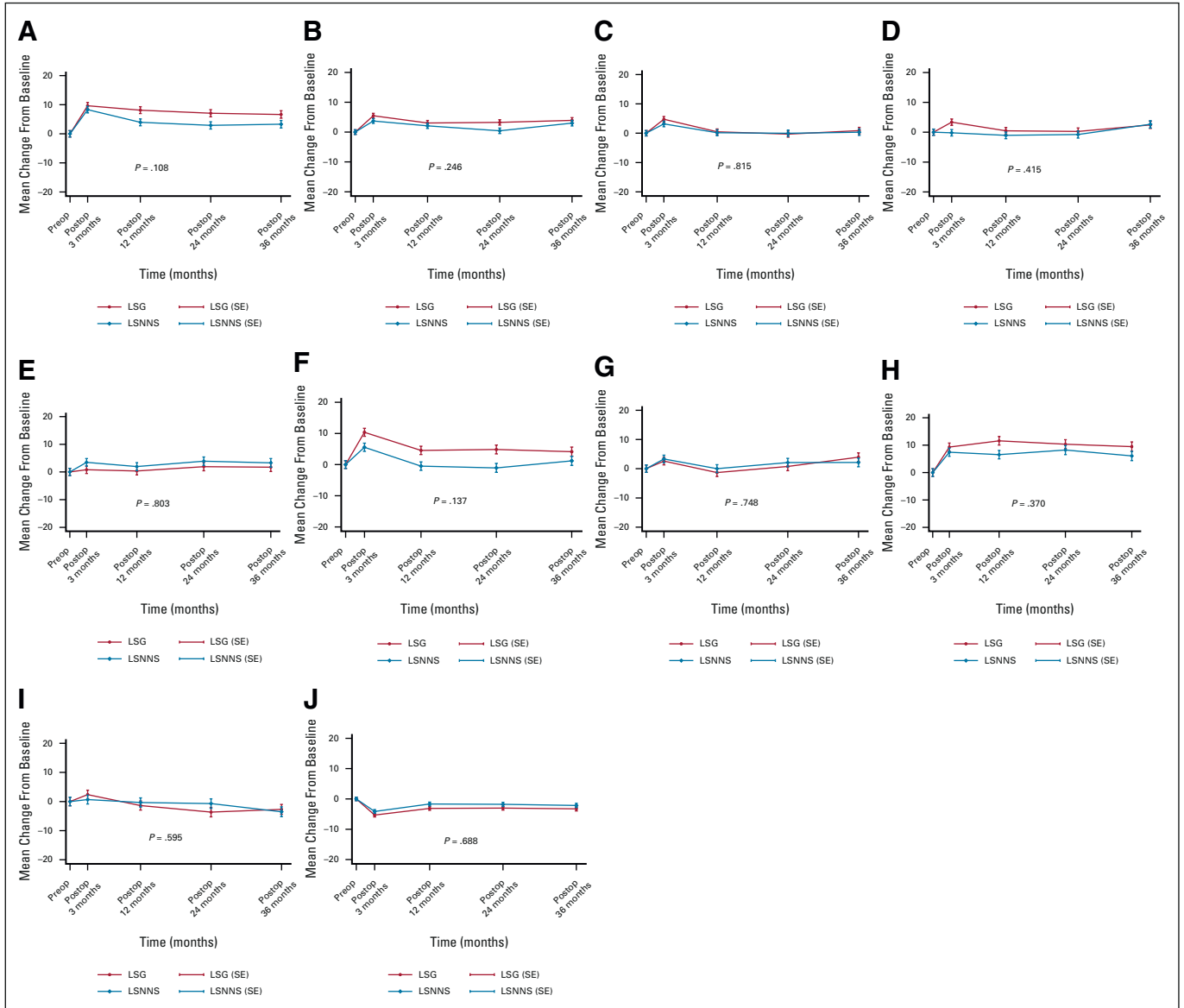
## APPENDIX



**FIG A1.** Details of a case with lymph node recurrence after laparoscopic sentinel node navigation surgery. A schematic of laparoscopic sentinel node navigation surgery in a case with lymph node recurrence. The primary tumor was located at the proximal antrum, greater curvature, and anterior wall side and was 2.1 cm in size, poorly differentiated, and pT1b. The sentinel basin was detected at lymph node station 4d, and there were three negative SBNs. Laparoscopic wedge resection was performed. Lymph node recurrence around the left gastric artery was suspected on follow-up computed tomography 1 year after surgery. Curative laparoscopic distal gastrectomy revealed metastatic lymph nodes at lymph node stations 6 (2/2), 7 (1/2), and 11p (1/3). Consecutive adjuvant chemotherapy was also administered. Multiple distant metastases developed 1.5 years after laparoscopic distal gastrectomy. The patient died 3 years after initial laparoscopic sentinel node navigation surgery, although palliative chemotherapy was administered.



**FIG A2.** Results of EORTC QLQ-C30 (function scale): (A) global health, (b) physical function, (C) role function, (D) emotional function, (E) cognitive function, and (F) social function. EORTC QLQ-C30, European Organization for Research and Treatment of Cancer Quality of the Life Questionnaire Core 30; LSG, laparoscopic standard gastrectomy; LSNNs, laparoscopic sentinel node navigation surgery.



**FIG A3.** Results of EORTC QLQ-C30 (symptom scale): (A) fatigue, (B) nausea/vomiting, (C) pain, (D) dyspnea, (E) insomnia, (F) appetite loss, (G) constipation (H) diarrhea, (I) financial difficulties, and (J) total score of EORTC C30. EORTC QLQ-C30, European Organization for Research and Treatment of Cancer Quality of the Life Questionnaire Core 30; LSG, laparoscopic standard gastrectomy; LSNNs, laparoscopic sentinel node navigation surgery.



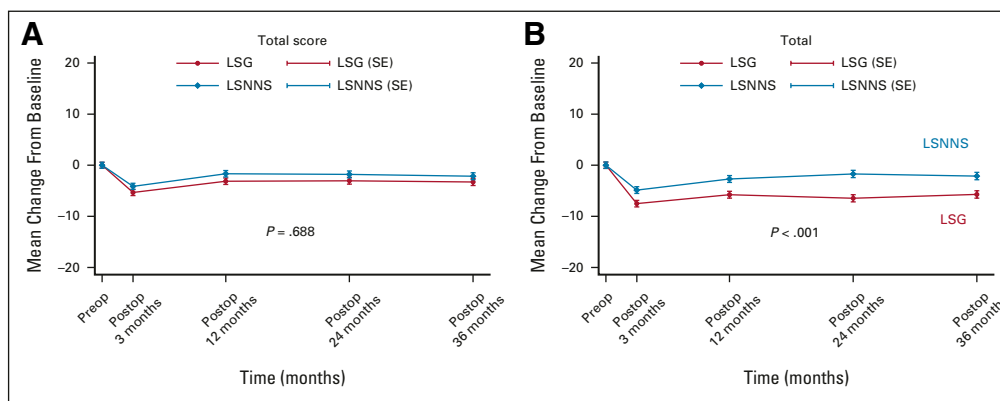
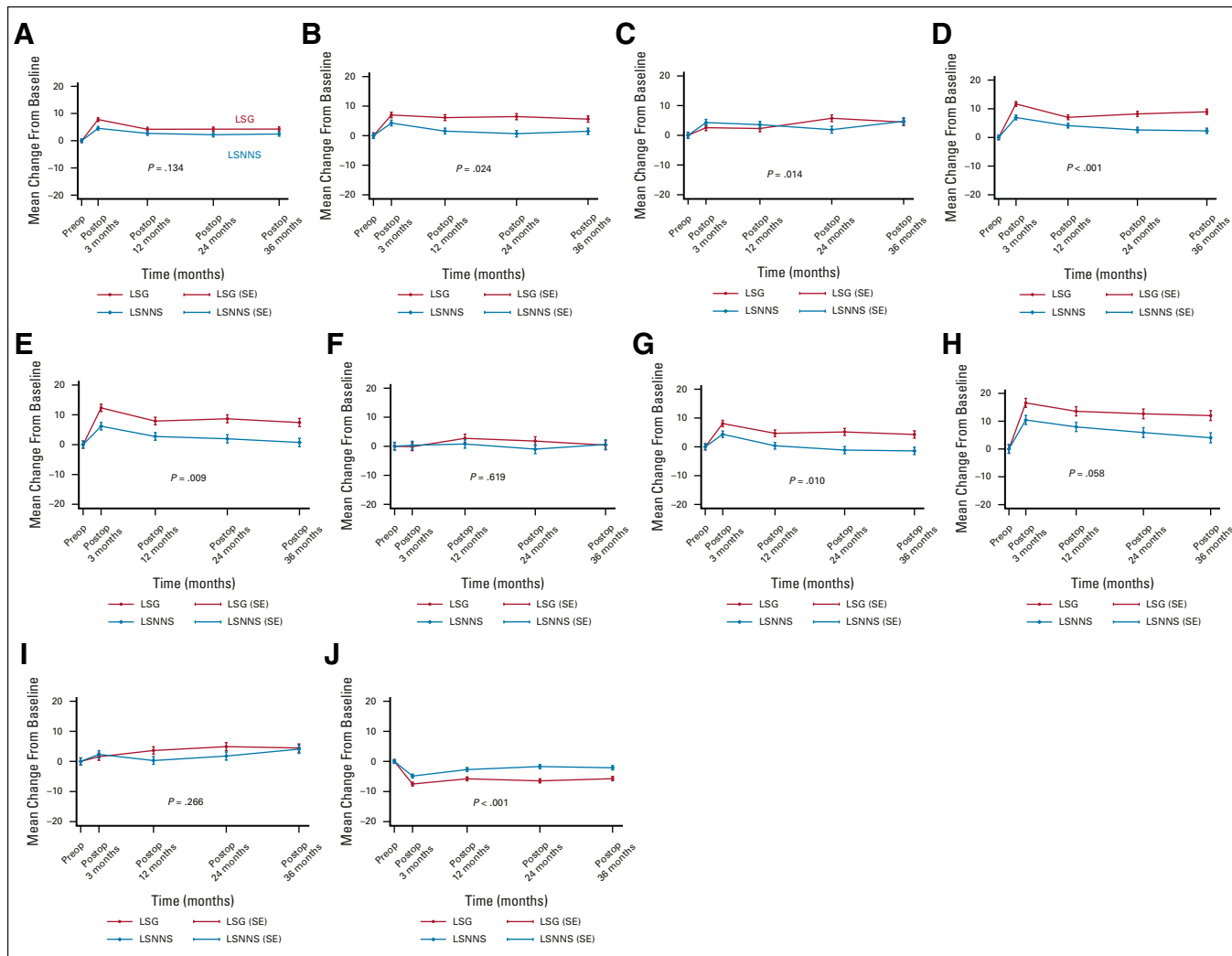


TABLE A1. Detailed Information About Patients With Recurrence

Recurrence Site	Group	Initial Operation	Postoperative Pathology	Interval	Treatment for Recurrence	Survival Status
Primary tumor	LSNNS	LW	Adenocarcinoma, tubular, poorly differentiated 3.6 × 2.5 cm Muscularis mucosa Margin 0.8, 1.0, 2.4, 0.6 cm Sentinel nodes 0/5 pT1aNO	6 months	LDG	Survived
Primary tumor	LSNNS	LW	Signet ring cell carcinoma 2.7 × 2.4 cm Submucosa 1 (0.07 cm) Margin 0.6, 0.4, 0.6, 0.5 cm Sentinel nodes 0/23 pT1bNO	3 years	LDG	Survived
Lymph node	LSNNS	LW	Signet ring cell carcinoma 2.1 × 1.9 cm Submucosa 3 (0.14 cm) Margin 0.9, 1.0, 1.2, 1.0 cm Sentinel nodes 0/3 pT1bNO	1 year	LDG and adjuvant chemotherapy	Cancer mortality
Distant (peritoneal)	LSG	LDG	Signet ring cell carcinoma 2.5 × 2.0 cm Submucosa 2 (0.67 cm) Margin 6.0, 9.0 cm Lymph nodes 4/58 pT1bN2	7 months	Palliative chemotherapy	Survived
Distant (peritoneal)	LSG	LDG and adjuvant chemotherapy	Signet ring cell carcinoma 6.5 × 5.0 cm Subserosa Margin 4.5, 4.7 cm Lymph nodes 11/23 pT3N3a	3 years	Palliative chemotherapy	Survived
Distant (para-aortic)	LSNNS	LDG (metastatic sentinel node) and adjuvant chemotherapy	Adenocarcinoma, tubular, poorly differentiated 2.2 × 2.0 Subserosa Margin 7.5, 9.5 cm Lymph nodes 1/26 pT3N1	9 months	Palliative chemotherapy	Cancer mortality
Distant (para-aortic)	LSNNS	LW	Adenocarcinoma, tubular, moderately differentiated 1.6 × 1.3 Submucosa 2 (0.07 cm) Margin 0.9, 0.8, 0.4, 1.2 cm Sentinel nodes 0/2 (ITC+) pT1bNO	2 years	Palliative chemotherapy	Survived
Metachronous	LSNNS	LW	Signet ring cell carcinoma 2.2 × 2.0 cm Muscularis mucosa Margin 0.4, 1.6, 1.0, 1.4 cm Sentinel nodes 0/2 pT1aNO	1 year	ESD	Survived
Metachronous	LSNNS	LW	Signet ring cell carcinoma 2.2 × 1.5 cm Lamina propria Margin 2.5, 0.6, 0.6, 0.8 cm Sentinel nodes 0/13 pT1aNO	2.5 years	LDG	Survived
Metachronous	LSNNS	LW	Signet ring cell carcinoma 3.4 × 2.2 cm Muscularis mucosa Margin 0.3, 0.1, 0.4, 0.5 cm Sentinel nodes 0/2 pT1aNO	3 years	LDG	Survived

(continued on following page)

**TABLE A1.** Detailed Information About Patients With Recurrence (continued)

Recurrence Site	Group	Initial Operation	Postoperative Pathology	Interval	Treatment for Recurrence	Survival Status
Metachronous	LSNNS	LW	Adenocarcinoma, tubular poorly differentiated 1.3 × 1.2 cm Submucosa 3 (0.3 cm) Margin 1.1, 4.5, 1.0, 2.3 cm Sentinel nodes 0/14 pT1bNO	6 months	LTG	Survived
Metachronous	LSNNS	LW	Adenocarcinoma, tubular poorly differentiated 3.0 × 2.4 cm Submucosa 2 (0.15 cm) Margin 0.4, 0.6, 0.2, 0.1 cm Sentinel nodes 0/17 pT1bNO	3 years	LTG	Survived

Abbreviations: ESD, endoscopic submucosal dissection; ITC, isolated tumor cell; LDG, laparoscopic distal gastrectomy; LSG, laparoscopic standard gastrectomy; LSNNS, laparoscopic sentinel node navigation surgery; LTG, laparoscopic total gastrectomy; LW, laparoscopic wedge resection.