

ORIGINAL INVESTIGATION

Open Access

Associations of Fetuin-A levels with vascular disease in type 2 diabetes patients with early diabetic nephropathy

Marcel Roos^{1*}, Dimitrios Oikonomou³, Maximilian von Eynatten¹, Peter B Luppa², Uwe Heemann¹, Jens Lutz¹, Marcus Baumann¹, Peter P Nawroth³, Angelika Bierhaus³, Per M Humpert³

Abstract

Background: Ambiguous results exist on fetuin-A as marker for vascular disease in type 2 diabetes. This study aims to define the role of fetuin-A as marker for micro- and macrovascular disease in a high risk population of patients with type 2 diabetes mellitus and early diabetic nephropathy.

Methods: Fetuin-A serum levels were assessed by ELISA in a cross-sectional setting in 153 patients with type 2 diabetes. Associations of fetuin-A with metabolic, inflammatory and vascular markers were studied. Atherosclerotic burden was assessed by ankle-brachial-index (ABI) as well as detection of common carotid artery intima-media thickness (IMT).

Results: Levels of fetuin-A were lower in male than in female patients (0.49 ± 0.15 vs. 0.56 ± 0.20 g/L, $p = 0.02$). In addition, there was an inverse correlation with age ($r = -0.20$, $P = 0.01$). Bivariate correlations adjusted for age and gender revealed no significant correlations with metabolic parameters, except for a weak inverse correlation with serum adiponectin ($r = -0.19$, $p = 0.02$). Regarding parameters of micro- and macrovascular disease, fetuin-A was significantly associated with ABI ($r = 0.18$, $p = 0.04$), while there was no association with IMT ($r = -0.07$, $p = n.s$). Patients with an ABI < 0.9 had lower fetuin A levels than patients with an ABI 0.9-1.3 or > 1.3 (0.43 ± 0.10 vs. 0.52 ± 0.17 vs. 0.54 ± 0.18 g/L $p = 0.05$). Neither GFR nor albuminuria were associated with fetuin-A serum levels. Patients with prevalent neuropathy did not have altered fetuin-A levels compared to diabetic controls. In step-wise logistic regression analysis including age, gender, HbA1c, total cholesterol, glomerular filtration rate and fetuin-A, only total cholesterol ($\beta = 0.01$, $p = 0.02$) and fetuin-A ($\beta = -5.99$, $p = 0.03$) proved to be independent predictors of an ABI < 0.9 .

Conclusions: The results of this cross-sectional study suggest that lower fetuin-A levels are associated with macrovascular late complications in high-risk type 2 diabetes patients while there are no associations of fetuin-A with metabolic status or microvascular complications.

Background

Various biomarkers have been studied for identification of type 2 diabetes (T2D) patients at micro- and macrovascular risk. Most of these markers are inflammatory, metabolic or procoagulant molecules indicating an unfavourable metabolic and vascular status in patients with type 2 diabetes [1]. However, the different biomarkers show large variations in risk prediction depending on

metabolic status and disease severity of the study groups [2,3]. Recently published data imply, that most novel biomarkers do not improve risk prediction when added to models based on conventional risk scores [4] Yet, associations of novel biomarkers such as fetuin-A with metabolic markers or complications do help to understand their role in the pathophysiology of vascular disease.

In mice, fed a mineral/vitamin D-rich diet, knockout of fetuin-A resulted in arterial or soft-tissue calcification or both [5-7]. In humans, so far the available data has

* Correspondence: marcel.roos@lrz.tum.de

¹Department of Nephrology, Klinikum rechts der Isar, Munich, Germany
Full list of author information is available at the end of the article

been inconsistent. Lower fetuin-A levels are associated with mortality and CVD events in cohorts with end-stage renal disease (ESRD) [8,9], while a population based study linked high plasma fetuin-A levels to an increased risk of myocardial infarction (MI) and ischemic stroke (IS) [10]. Yet, we could not demonstrate an association of fetuin-A with traditional cardiovascular risk factors, cardiovascular outcome or the metabolic syndrome in patients with manifest CHD in a 6-year follow study [11]. Contradictory results have also been published regarding the role of fetuin-A in macrovascular disease and patients with type 2 diabetes [12-14]. While some studies associated lower fetuin-A levels with peripheral arterial disease (PAD) [12,13], others observed an association of increased fetuin-A levels with coronary artery calcification (CAC) [15].

So far, there is no data available for associations of fetuin-A with parameters of microvascular disease in diabetes. To clarify the relation between fetuin-A and microvascular complications in patients with type 2 diabetes and early diabetic nephropathy, we studied associations with albuminuria, parameters of renal function as well as diabetic neuropathy. In addition, the atherosclerotic burden of these patients was assessed by quantification of the ankle-brachial index (ABI) and the common carotid artery intima-media-thickness (IMT).

Methods

Study population and data collection

153 Patients with type 2 diabetes were recruited from family practices being referred to the diabetes outpatient clinic at the University Hospital Heidelberg for specialist treatment. For eligibility, patients had to have a documented history of albuminuria in at least two separate urine samples (urinary albumin > 20 mg/L as suggested by current German and international guidelines for the diagnosis of diabetic nephropathy [16] as previously described [17]). Detailed patient characteristics are given in Table 1. In all individuals, 24-h urine samples were collected on 3 consecutive days and the mean of AER as well as the MDRD formula for the estimation of the glomerular filtration rate [18] were taken for statistical evaluation of renal function. All blood values, as well as ambulatory 24-h blood pressure values (given as mean of 24 h), were taken on day 1. The study complied with the Declaration of Helsinki, and all subjects gave written informed consent. The study was approved by the ethics committee of the Universities of Heidelberg.

Clinical chemistry

Blood was drawn on day 1 in a fasting state under standardized conditions and stored at -80°C until analysis. Serum fetuin-A was measured in duplicates by an ELISA (Epitope Diagnostics, Inc., San Diego, USA) according to

the manufacturer's protocol. The intra- and interassay variations were 5.3 and 7.1%, respectively. FPG was measured by a glucose oxidase method. Triglyceride, total cholesterol, and HDL cholesterol levels were quantified by standard laboratory methods, and LDL cholesterol levels were calculated by using the Friedewald formula. A1C was measured by high-performance liquid chromatography on a Variant II device (Bio-Rad Laboratories, Munich, Germany). AER was assessed and performed in three consecutive 24-h urinary collections. For collection of the urine sample, a 3-l plastic container was used, and the volume of urine was measured to the nearest 50 ml. Albumin levels were determined by turbidimetry (Siemens Healthcare Diagnostics, Eschborn, Germany). AER was expressed as milligrams per 24 h.

Assessment of carotid atherosclerosis and ankle-brachial index

IMT was detected using high-resolution B-mode ultrasound (Voluson 730 Kretz, Tiefenbach, Austria) of the extracranial carotid arteries bilaterally under continuous detection of the heart cycle using a three-lead electrocardiogram. The whole imaging and quantification procedure was performed digitally (Voluson 730 Kretz, Tiefenbach, Austria) at the time of study entry by a single investigator blinded for clinical data. For the purpose of this study, IMTs of the far wall of the common carotid artery were detected in end-diastolic frames, ~10 mm proximal to the carotid bulb, according to a previously described scanning protocol [19]. The measurements were performed at four points of both common carotid arteries avoiding areas of atherosclerotic plaque formation. The mean of the resulting eight single measurements was taken as mean IMT for statistical analyses in this study. The ABI was detected by simultaneous measurement of the brachial and posterior tibial artery systolic pressure using the 5 MHz Mini Doppler® doppler device (Huntleigh Diagnostic Products, Cardiff, UK). Pressure was taken at the posterior tibial artery only and the lower ABI from both sides was taken for analyses. Patients were further classified to have no PAD (ABI 0.9-1.3), mediasclerosis (ABI > 1.3) or prevalent PAD (ABI < 0.9). 151 patients qualified for statistical analyses regarding this endpoint.

Patients were considered to have significant neuropathy when they had a vibration perception < 5/8 using a Rydel-Seiffer graduated tuning fork (C-64 to C-128) which was previously shown to be a reliable diagnostic instrument for the detection of peripheral neuropathy [20]. The mean of measurements on both feet was taken for evaluation.

Statistical analyses

Statistical analyses were performed using SPSS software version 16.0 (SPSS, Chicago, IL). Spearman correlation

Table 1 Patients Characteristics

	Type 2 diabetic patients	Serum fetuin-A*	
		r	p
n	153		
Gender (male)	116 (74)§	-	-
Age (Years)	59 ± 8	-0.201#	0.01
BMI (kg/m ²)	33 ± 6	-0.125	n.s.
Systolic BP (mmHg)	136 ± 19	0.104	n.s.
Diastolic BP (mmHg)	80 ± 8	0.125	n.s.
Duration of diabetes (years)	12 ± 8	-0.016	n.s.
Current smoker (yes)	25 (16)	-	-
Patients on ACE-inhibitor or angiotensin receptor blocker (yes: n;%)	128 (82)	-	-
Patients on Statin (yes:n;%)	89 (57)	-	-
Patients on Beta-Blockers (yes:n;%)	76 (49)	-	-
Patients receiving antihypertensive drugs (%)	137 (90)	-	-
Patients receiving > 2 antihypertensive drugs (%)	73 (48)	-	-
Patients on Insulin Treatment (yes:n;%)	91 (58)	-	-
HbA1c (%)	7.3 ± 1.2	-0.045	n.s.
Fasting Glucose (mg/dL)	144 ± 50	-0.022	n.s.
Serum Creatinine (mg/dL)	0.89 ± 0.3	0.017	n.s.
Serum Albumin (g/L)	45 ± 3	-0.006	n.s.
Serum Fetuin A (g/L)	0.51 ± 0.17		

* log transformed data for analysis

adjusted for gender, all other correlations are partially adjusted for age and gender

§ male vs. female: 0.49 ± 0.15 vs. 0.56 ± 0.20 g/L, p = 0.02

coefficients were used to describe the association between serum fetuin-A and the variables of interest. Comparison between two or more sets of patients was performed by independent t test or one-way ANOVA. Multivariable linear and stepwise binary logistic regression analyses evaluated the association of serum fetuin-A with the respective metabolic or vascular parameters. Models were adjusted as given in the respective Table or the Results section.

Results

Association of serum fetuin-A levels with cardiovascular risk factors and renal function

Clinical and laboratory characteristics of patients with type 2 diabetes and bivariate analyses of associations between different variables and serum fetuin-A are given in Table 1. The overall mean serum level of fetuin-A was 0.51 ± 0.17 g/L with a range of 0.30 to 1.07 g/L. In bivariate analysis, only age was significantly and inversely associated with serum fetuin-A levels (r = -0.20, p = 0.02). Male patients had significantly lower fetuin-A levels (0.49 ± 0.15 vs. 0.56 ± 0.20 g/L, p = 0.02). Table 2 shows the association of fetuin-A levels with metabolic parameters and markers of vascular disease and renal function. Apart from

adiponectin, which was inversely and significantly associated with fetuin-A levels (r = -0.188, p = 0.02), no other metabolic variable significantly correlated in this group of type 2 diabetes patients with vascular late complications.

Table 2 Associations of Fetuin A with Metabolic Parameters, markers of vascular disease and renal function

		Serum fetuin-A*	
		r#	p
Waist/Hip-Ratio	1.02 ± 0.08	0.069	n.s.
Triglycerides (mg/dL) *	223 ± 307	0.05	n.s.
Cholesterol (mg/dL)	189 ± 56	-0.001	n.s.
HDL (mg/dL)	45.6 ± 13.4	-0.034	n.s.
Adiponectin (µg/mL) *	10.3 ± 6.6	-0.188	0.02
hsCRP (mg/L)*	3.9 ± 5.4	0.063	n.s.
Intima-Media-Thickness (mm)	0.87 ± 0.15	-0.070	n.s.
Ankle-Brachial Index	1.01 ± 0.18	0.175	0.04
Estimated Glomerular Filtration Rate (MDRD, ml/min)	97 ± 32	-0.017	n.s.
Albumin Excretion (mg/24 h)*	154 ± 371	0.096	n.s.

* log transformed data for analysis

partially adjusted for age and gender

We could not identify a significant correlation of serum fetuin-A levels with IMT, the glomerular filtration rate (GFR by MDRD) or the albumin excretion. However, serum fetuin-A was positively associated with the ABI ($r = 0.18$, $p = 0.04$). In multivariable linear regression analysis with fetuin-A as the dependent variable, age ($\beta = -0.203$, $p = 0.024$) and adiponectin ($\beta = -0.192$, $p = 0.03$) were independently associated with fetuin-A. A borderline significance was seen with gender ($\beta = 0.228$, $p = 0.06$). No associations of fetuin-A were seen with BMI ($\beta = -0.131$, $p = 0.12$), HbA1c ($\beta = -0.004$, $p = 0.96$) and albumin ($\beta = -0.02$, $P = 0.98$).

Associations of fetuin-A levels with prevalent macrovascular disease were studied. While there were no associations of fetuin-A with IMT as a surrogate marker of atherosclerosis ($r = -0.11$, $p = 0.2$, Figure 1a), patients with an ABI < 0.9 had lower fetuin A levels than patients with an ABI 0.9-1.3 or > 1.3 (0.43 ± 0.10 vs. 0.52 ± 0.17 vs. 0.54 ± 0.18 g/L $p = 0.05$). (Figure 1b). In addition, concentrations of fetuin-A were quantified in patients with or without a history of macrovascular disease such as coronary artery disease, stroke and peripheral artery disease. In this analysis, patients with a

history of macrovascular disease ($n = 102$) revealed a trend towards lower levels of fetuin-A compared to patients without prevalent macrovascular disease ($n = 51$) (0.47 ± 0.16 vs 0.52 ± 0.17 g/L, $p = 0.08$), (Figure 2a). In a binary stepwise logistic regression analysis excluding patients with an ABI > 1.3 , only total cholesterol ($\beta = 0.01$, $p = 0.02$) and fetuin-A ($\beta = -5.99$, $p = 0.03$) proved to be independent predictors of an ABI < 0.9 , while age, gender, HbA1c, and glomerular filtration rate were not significantly associated with PAD.

We further investigated the association of fetuin-A levels with prevalent polyneuropathy (PNP). Fetuin-A serum levels did not differ among patients with ($n = 69$) vs. without ($n = 84$) PNP (0.50 ± 0.15 vs. 0.52 ± 0.16 $\mu\text{g/mL}$, $p = 0.58$) (Figure 2b). Likewise, fetuin-A concentrations were not associated with the degree of 24 h albumin excretion as an additional marker of microvascular disease in these patients with early diabetic nephropathy (Table 2).

Discussion

This study demonstrates that lower fetuin-A levels seem to be associated with prevalent macrovascular disease

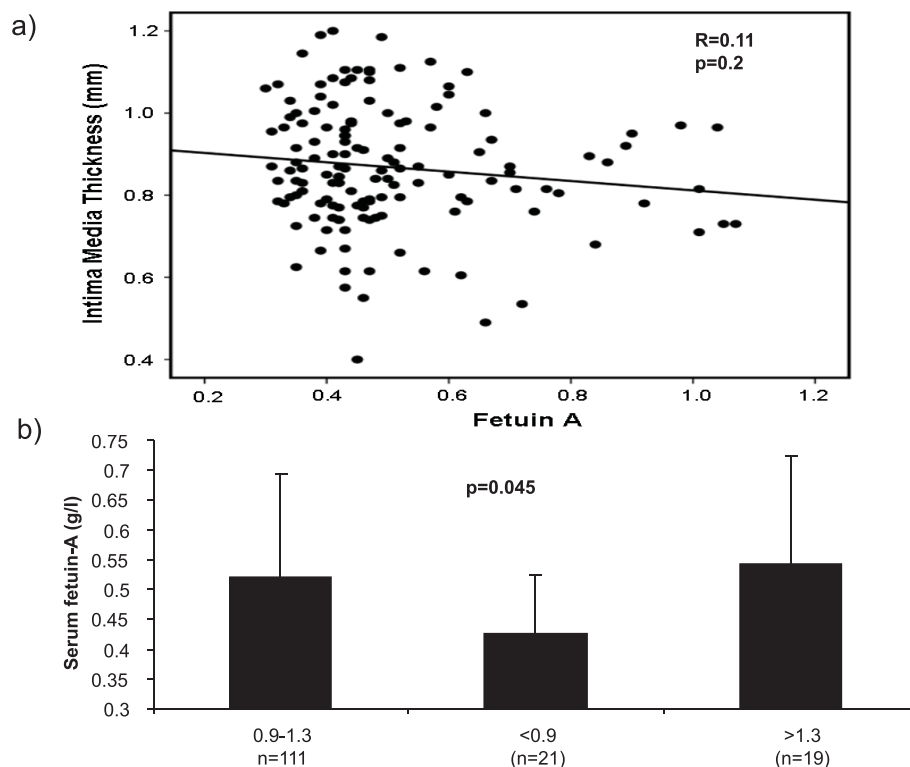
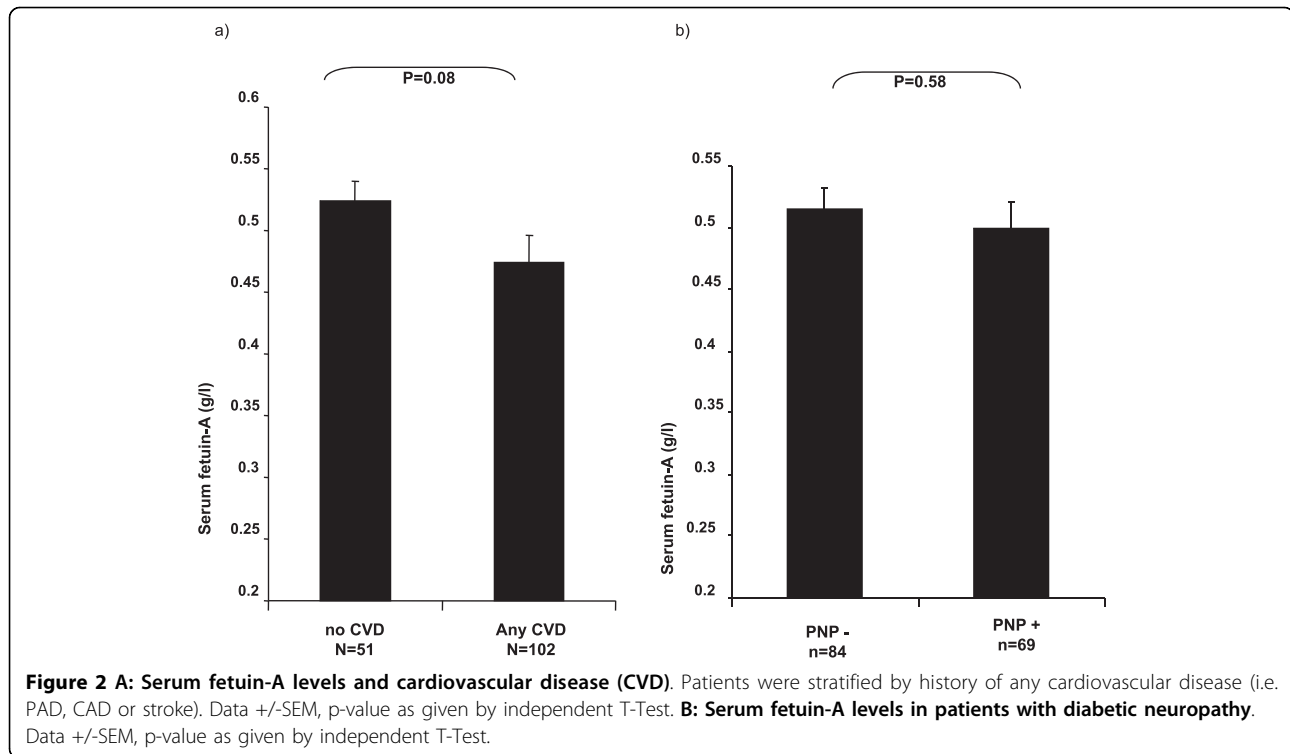


Figure 1 A: Serum fetuin-A levels and macrovascular disease (Intima Media Thickness). Scatter plot showing the relationship between serum fetuin-A levels and IMT. Data as given by Spearman correlation coefficient. **B: Serum fetuin-A levels and ankle-brachial index (ABI).** Fetuin-A levels were compared between groups stratified by ABI (< 0.90 , $0.90-1.30$, and > 1.30). Data \pm SD, p-value as given by one-way ANOVA.



in type 2 diabetes, but not with IMT as a surrogate marker of atherosclerotic burden. Furthermore, we could show for the first time, that fetuin-A serum levels are not associated with microvascular complications in patients with early diabetic nephropathy. In addition, fetuin-A levels do not correlate with metabolic parameters in our type 2 diabetes patients with prevalent late complications.

Fetuin-A was shown to act as a natural inhibitor of the insulin receptor tyrosine kinase in liver and skeletal muscle, and fetuin knock-out mice displayed improved insulin sensitivity [21]. Different observational studies have proposed that high serum fetuin-A levels are associated with the presence or development of the metabolic syndrome suggesting fetuin-A as a risk factor for this condition [10,22,23]. Moreover, fetuin-A complexes with calcium and phosphorus in the circulation and prevents the precipitation of these minerals in serum [5,6]. Fetuin-A is regarded as marker for vascular inflammation and as one of the most potent negative regulators of vascular ossification - calcification [24,25]. In animals lacking the fetuin-A gene, the aorta was found to be spared of calcification and fibrosis, whereas peripheral vessels in the skin and kidney showed evidence of extensive calcification, and the small artery involvement preceded the impairment of renal function [6,26]. The data presented herein allows to speculate, that fetuin-A could play a role in the development of

prevalent macrovascular disease in type 2 diabetes, yet possible mechanisms remain unclear. In line with this hypothesis, Emoto et al. showed a possible effect of fetuin-A on inhibiting the calcification of atherosclerotic calcified plaques (CP) independently of renal impairment [13]. In their study including less advanced type 2 diabetes patients without nephropathy and of which 32% were even on dietary treatment, fetuin-A levels were significantly lower in patients with atherosclerotic CP of the common carotid and femoral arteries than in those without CP. Our data in more advanced micro- and macrovascular disease suggests that fetuin-A might play a role in the development of vascular stenosis, while there were no associations with early lesions indicated by IMT. It needs to be emphasized in this context, that the measurement of IMT is performed in areas with no atherosclerotic plaque. However, patients in this study have a number of possible confounders for the association of fetuin-A and IMT like medications including insulin as well as prevalent microvascular disease. The results presented are also in line with previous data [12] showing that circulating fetuin-A was lower in 38 subjects with type 2 diabetes and an ABI < 0.9, compared with 700 diabetes controls. Somehow contradictory, another study showed a direct relation between serum fetuin-A levels and coronary artery calcification (CAC) evaluated by electron beam computed tomography [15]. Like IMT, CAC is a surrogate marker for

coronary artery disease not specifying for the severity of CHD in terms of vascular stenosis. In addition, the data on CAC were obtained from African Americans and Latinos and fetuin-A levels were previously shown to differ among ethnic groups [22,27]. Reviewing the existing data as well as the results obtained in this study, it may be assumed that fetuin-A levels are lower in type 2 diabetes patients with stenosing arterial disease, possibly independent of the localization.

Our results are in contrast to findings in non-diabetic subjects [28], as well as several cross-sectional studies which showed an association of high fetuin-A levels with impaired glucose tolerance, lipid metabolism and markers of vascular disease [10,22,23]. The advanced type 2 diabetes patients in this study showed no associations of metabolic parameters with fetuin-A except and inverse correlation of fetuin-A levels with serum adiponectin which is in line with previous experimental data showing a decrease in adiponectin expression as well as circulating adiponectin levels in mice treated with fetuin-A [21]. Yet, associations of fetuin-A with metabolic parameters can be confounded by many of the medications in the subjects studied herein. In a middle-aged non-diabetic population of which the majority was female, increased fetuin-A levels were associated with increased IMT [28]. Again, a recently published study in patients without diabetes and renal impairment demonstrated decreased fetuin-A serum levels in patients suffering from advanced three-vessel disease compared with those without stenosis [29]. These findings go in line with our assumption of reduced fetuin-A serum levels in patients with prevalent vascular disease.

Taken together, we assume a biphasic association of fetuin-A with vascular disease: relatively healthy diabetic and non-diabetic patients without pre-existing vascular disease [10,23] show associations of higher fetuin-A with metabolic and vascular risk, while patients with prevalent vascular disease have decreased fetuin-A levels. Hence, the currently available data implies that effects of fetuin-A may be of greater importance in the very early phases of atherosclerosis, a pattern known from other CHD risk factors, such as C-reactive protein or adiponectin, which seem to be better predictors in primary prevention [30,31]. Yet, future experimental studies will have to reveal the mechanisms by which fetuin-A could influence the early atherosclerotic process.

Since mice deficient for the fetuin-A gene showed a distinct pattern of small caliber vessel and kidney calcification, we studied associations of parameters of microvascular disease with fetuin-A for the first time in this study. Interestingly, we did not find any associations, neither with the degree of albumin excretion or renal function, nor with the prevalence of diabetic neuropathy. This suggests, that fetuin-A does not play a significant

role in the development of these entities of diabetes complications.

We recognize the limitations of the present study. Our approach is limited by the small samples size. Therefore, especially the data for associations with microvascular disease and renal function in type 2 diabetes will have to be reproduced in larger groups. Moreover, the cross-sectional design needs cautious interpretation of data and there is no prospective data for primary or secondary prevention in diabetes available.

Conclusions

In this study, low plasma fetuin-A levels predict PAD in type 2 diabetes with early diabetic nephropathy while there are no associations of fetuin-A with markers of microvascular disease in these patients.

Acknowledgements

This study was supported by the Deutsche Diabetes Stiftung (to MR) and by the Manfred Lautenschläger Stiftung (to PPN, AB and PMH). We thank Mrs. Ursula Huber and Karin Schäfer for excellent technical assistance.

Author details

¹Department of Nephrology, Klinikum rechts der Isar, Munich, Germany. ²Department of Clinical Chemistry and Pathobiochemistry, Klinikum rechts der Isar, Munich, Germany. ³Department of Medicine I and Clinical Chemistry, University of Heidelberg, Heidelberg, Germany.

Authors' contributions

All authors participated in the design and coordination of the study, reviewed the analysis and took part in writing the manuscript. They also read and approved the final manuscript.

Competing interests

The authors declare that they have no competing interests.

Received: 13 July 2010 Accepted: 7 September 2010

Published: 7 September 2010

References

1. St Clair L, Ballantyne CM: Biological surrogates for enhancing cardiovascular risk prediction in type 2 diabetes mellitus. *Am J Cardiol* 2007, **99**:80B-88B.
2. Zethelius B, Berglund L, Sundström J, Ingelsson E, Basu S, Larsson A, Venge P, Arnlöv J: Use of multiple biomarkers to improve the prediction of death from cardiovascular causes. *N Engl J Med* 2008, **358**:2107-2116.
3. Folsom AR, Chambless LE, Ballantyne CM, Coresh J, Heiss G, Wu KK, Boerwinkle E, Mosley TH, Sorlie P, Diao G, Sharrett AR: An assessment of incremental coronary risk prediction using C-reactive protein and other novel risk markers: the atherosclerosis risk in communities study. *Arch Intern Med* 2006, **166**:1368-1373.
4. Kim HC, Greenland P, Rossouw JE, Manson JE, Cochrane BB, Lasser NL, Limacher MC, Lloyd-Jones DM, Margolis KL, Robinson JG: Multimarker prediction of coronary heart disease risk: the Women's Health Initiative. *J Am Coll Cardiol* 2010, **55**:2080-2091.
5. Heiss A, DuChesne A, Denecke B, Grötzinger J, Yamamoto K, Renné T, Jähnen-Dechent W: Structural basis of calcification inhibition by alpha 2-HS glycoprotein/fetuin A. Formation of colloidal calciprotein particles. *J Biol Chem* 2003, **278**:13333-13341.
6. Schafer C, Heiss A, Schwarz A, Westenfeld R, Kettler M, Floege J, Müller-Esterl W, Schinke T, Jähnen-Dechent W: The serum protein alpha 2-Heremans-Schmid glyco-protein/fetuin-A is a systemically acting inhibitor of ectopic calcification. *J Clin Invest* 2003, **112**:357-366.

7. Luo G, Ducey P, McKee MD, Pinero GJ, Loyer E, Behringer RR, Karsenty G: **Spontaneous calcification of arteries and cartilage in mice lacking matrix GLA protein.** *Nature* 1997, **386**:78-81.
8. Hermans MM, Brandenburg V, Ketteler M, Kooman JP, van der Sande FM, Boeschoten EW, Leunissen KM, Krediet RT, Dekker FW: **Netherlands cooperative study on the adequacy of Dialysis (NECOSAD). Association of serum fetuin-A levels with mortality in dialysis patients.** *Kidney Int* 2007, **72**:202-207.
9. Ketteler M, Bongartz P, Westenfeld R, Wildberger JE, Mahnen AH, Böhm R, Metzger T, Wanner C, Jahnke-Dechent W, Floege J: **Association of low fetuin-A (AHSG) concentrations in serum with cardiovascular mortality in patients on dialysis: a cross-sectional study.** *Lancet* 2003, **361**:827-833.
10. Weikert C, Stefan N, Schulze MB, Pischon T, Berger K, Joost HG, Häring HU, Boeing H, Fritsche A: **Plasma fetuin-A levels and the risk of myocardial infarction and ischemic stroke.** *Circulation* 2008, **118**:2555-2562.
11. Roos M, von Eynatten M, Heemann U, Rothenbacher D, Brenner H, Breitling LP: **Serum Fetuin-A, Cardiovascular Risk Factors and 6-year Follow-up Outcome in Patients With Coronary Heart Disease.** *Am J Cardiol* 2010, **105**:1666-1672.
12. Eraso LH, Ginwala N, Qasim AN, Mehta NN, Dlugash R, Kapoor S, Schwartz S, Schutta M, Iqbal N, Mohler ER, Reilly MP: **Association of Lower Plasma Fetuin-A Levels With Peripheral Arterial Disease in Type 2 Diabetes.** *Diabetes Care* 2010, **33**:408-410.
13. Emoto M, Mori K, Lee E, Kawano N, Yamazaki Y, Tsuchikura S, Morioka T, Koyama H, Shoji T, Inaba M, Nishizawa Y: **Fetuin-A and atherosclerotic calcified plaque in patients with type 2 diabetes mellitus.** *Metabolism* 2010, **59**:873-878.
14. Stefan N, Weikert C, Ix JH, Fritsche A, Häring HU: **Association of lower plasma fetuin-A levels with peripheral arterial disease in type 2 diabetes: response to Eraso et al.** *Diabetes Care* 2010, **33**:e55, author reply e56.
15. Mehrotra R, Westenfeld R, Christenson P, Budoff M, Ipp E, Takasu J, Gupta A, Norris K, Ketteler M, Adler S: **Serum fetuin-A in nondialyzed patients with diabetic nephropathy: relationship with coronary artery calcification.** *Kidney Int* 1995, **67**:1070-1077.
16. Gross JL, de Azevedo MJ, Silveiro SP, Canani LH, Caramori ML, Zelmanovitz T: **Diabetic nephropathy: diagnosis, prevention, and treatment.** *Diabetes Care* 2005, **28**:164-76, Review.
17. von Eynatten M, Baumann M, Heemann U, Zdunek D, Hess G, Nawroth PP, Bierhaus A, Humpert PM: **Urinary L-FABP and anaemia: distinct roles of urinary markers in type 2 diabetes.** *Eur J Clin Invest* 2010, **40**:95-102.
18. Levey AS, Coresh J, Greene T, Marsh J, Stevens LA, Kusek JW, Van Lente F: **Chronic Kidney Disease Epidemiology Collaboration. Expressing the Modification of Diet in Renal Disease Study equation for estimating glomerular filtration rate with standardized serum creatinine values.** *Clin Chem* 2007, **53**:766-72.
19. Humpert PM, Papadopoulos G, Schaefer K, Djuric Z, Konrade I, Morcos M, Nawroth PP, Bierhaus A: **sRAGE and eRAGE are not associated with peripheral or autonomic neuropathy in type 2 diabetes.** *Horm Metab Res* 2007, **39**:899-902.
20. Meijer JW, Smit AJ, Lefrandt JD, van der Hoeven JH, Hoogenberg K, Links TP: **Back to basics in diagnosing diabetic polyneuropathy with the tuning fork!** *Diabetes Care* 2005, **28**:2201-2205.
21. Hennige AM, Staiger H, Wicke C, Machicao F, Fritsche A, Häring HU, Stefan N: **Fetuin-A induces cytokine expression and suppresses adiponectin production.** *PLoS One* 2008, **12**(3):e1765.
22. Ix JH, Shlipak MG, Brandenburg VM, Ali S, Ketteler M, Whooley MA: **Association between human fetuin-A and the metabolic syndrome: data from the Heart and Soul study.** *Circulation* 2006, **113**:1760-1767.
23. Stefan N, Fritsche A, Weikert C, Boeing H, Joost HG, Häring HU, Schulze MB: **Plasma fetuin-A levels and the risk of type 2 diabetes.** *Diabetes* 2008, **57**:2762-2767.
24. Hayden MR, Tyagi SC, Kolb L, Sowers JR, Khanna R: **Vascular ossification - calcification in metabolic syndrome, type 2 diabetes mellitus, chronic kidney disease, and calciphylaxis - calcific uremic arteriopathy: the emerging role of sodium thiosulfate.** *Cardiovascular Diabetology* 2005, **4**:4.
25. Baumann M, Richart T, Sollinger D, Pelisek J, Roos M, Kouznetsova T, Eckstein HH, Heemann U, Staessen JA: **Association between carotid diameter and the advanced glycation endproduct N^ε-Carboxymethyllysine (CML).** *Cardiovascular Diabetology* 2009, **8**:45.
26. Merx MW, Schäfer C, Westenfeld R, Brandenburg V, Hidajat S, Weber C, Ketteler M, Jahnke-Dechent W: **Myocardial stiffness, cardiac remodeling, and diastolic dysfunction in calcification-prone fetuin-A-deficient mice.** *J Am Soc Nephrol* 2005, **16**:3357-3364.
27. Ix JH, Wassel CL, Kanaya AM, Vittinghoff E, Johnson KC, Koster A, Cauley JA, Harris TB, Cummings SR, Shlipak MG: **Fetuin-A and incident diabetes mellitus in older persons.; Health ABC Study.** *JAMA* 2008, **300**:182-188.
28. Rittig K, Thamer C, Haupt A, Machann J, Peter A, Balletshofer B, Fritsche A, Häring HU, Stefan N: **High Plasma Fetuin-A is associated with Increased Carotid Intima-media Thickness in a Middle-Aged Population.** *Atherosclerosis* 2009, **207**:341-342.
29. Mori K, Ikari Y, Jono S, Emoto M, Shioi A, Koyama H, Shoji T, Ishimura E, Inaba M, Hara K, Nishizawa Y: **Fetuin-A is associated with calcified coronary artery disease.** *Coron Artery Dis* 2010, **21**:281-5.
30. Danesh J, Wheeler JG, Hirschfield GM, Eda S, Eiriksdottir G, Rumley A, Lowe GD, Pepys MB, Gudnason V: **C-reactive protein and other circulating markers of inflammation in the prediction of coronary heart disease.** *N Engl J Med* 2004, **350**:1387-1397.
31. von Eynatten M, Hamann A, Twardella D, Nawroth PP, Brenner H, Rothenbacher D: **Atherogenic dyslipidaemia but not total- and high-molecular weight adiponectin are associated with the prognostic outcome in patients with coronary heart disease.** *Eur Heart J* 2008, **29**:1307-1315.

doi:10.1186/1475-2840-9-48

Cite this article as: Roos et al.: Associations of Fetuin-A levels with vascular disease in type 2 diabetes patients with early diabetic nephropathy. *Cardiovascular Diabetology* 2010 **9**:48.

Submit your next manuscript to BioMed Central and take full advantage of:

- Convenient online submission
- Thorough peer review
- No space constraints or color figure charges
- Immediate publication on acceptance
- Inclusion in PubMed, CAS, Scopus and Google Scholar
- Research which is freely available for redistribution

Submit your manuscript at
www.biomedcentral.com/submit

