

Coexpression of periostin and EGFR in patients with esophageal squamous cell carcinoma and their prognostic significance

Wei Jia¹
Wei Wang¹
Chu-shu Ji¹
Jun-yang Niu²
Ya-jing Lv¹
Hang-cheng Zhou²
Bing Hu¹

¹Department of Medical Oncology,

²Department of Pathology, Anhui Provincial Hospital, Anhui Medical University, Hefei, People's Republic of China

Background: Both periostin (PN) and epidermal growth factor receptor (EGFR) can predict the prognosis of several carcinomas alone. However, coexpression of PN and EGFR in esophageal squamous cell carcinoma (ESCC) still remains unknown. We aimed to clarify their relationship with clinicopathological factors and prognostic significance of their coexpression in ESCC.

Patients and methods: In this single-center retrospective study, immunohistochemistry was performed to evaluate the expression of PN and EGFR in ESCC and paracarcinomatous tissues of 83 patients. The quantitative expression levels of PN and EGFR were examined in two ESCC and tumor-adjacent tissues. The levels of PN and EGFR expression were correlated with clinicopathological parameters by the χ^2 or Kruskal–Wallis method. Spearman's rank correlation test was performed to determine the relationship between PN and EGFR expression levels. Kaplan–Meier and Cox regression analyses were used to detect the prognostic factors of disease-free survival (DFS) and overall survival (OS).

Results: The high expression of PN protein in ESCC tissues was significantly associated with tumor length ($P=0.044$), differentiation grade ($P=0.003$), venous invasion ($P=0.010$), invasion depth ($P=0.007$), lymphatic metastasis ($P=0.000$), and tumor stage ($P=0.000$). The high expression of EGFR protein in ESCC tissues was only significantly related to lymphatic metastasis ($P=0.000$), invasion depth ($P=0.022$), and tumor stage ($P=0.000$). Kaplan–Meier analysis showed that high expression of PN was closely correlated to reduced OS ($P=0.000$) and DFS ($P=0.000$), which was consistent with EGFR expression. Cox regression analysis identified PN and EGFR as independent poor prognostic factors of OS and DFS in the ESCC patients ($P<0.05$). Moreover, the risk of death for the ESCC patients with low expression of two biomarkers and high expression of single biomarker was 0.243 times ($P=0.000$) and 0.503 times ($P=0.030$), respectively, than that for patients with high expression of two biomarkers.

Conclusion: PN and EGFR are related to miscellaneous clinicopathologic characteristics. Coexpression of PN and EGFR is more closely to be of predictive value on ESCC development and progression, which may offer a novel and potential target strategy for ESCC treatment in the future.

Keywords: esophageal squamous cell carcinoma, periostin, epidermal growth factor receptor, prognosis

Correspondence: Bing Hu
Department of Medical Oncology,
Anhui Provincial Hospital, Anhui
Medical University, No 17 Lujiang Road,
Hefei 230001, People's Republic of China
Tel/fax +86 551 6228 3337
Email hubing2013oncol@gmail.com

Introduction

Esophageal carcinoma, one of the virulent upper gastrointestinal tract malignant tumors, is the eighth most common incident cancer and sixth in lethal globally.¹ Esophageal adenocarcinoma is the most predominant type of esophageal cancer in America and Europe, while more than 80% of patients with esophageal cancer in

the developing countries have esophageal squamous cell carcinoma (ESCC).^{2,3} Owing to the lack of effective tumor biomarkers or characteristic symptoms for early diagnosis, a large number of the ESCC patients are diagnosed at late advanced stages. Recently, albeit noticeable improvements in surgical technique, chemotherapy, and radiotherapy, the prognosis for patients with ESCC remains unsatisfactory, in which the overall 5-year survival rate after radical resection of esophageal carcinoma ranges from 15% to 25%.^{1,2,4} Thus, it is urgent to find more effective molecular biomarkers of progression and recurrence in ESCC for targeted therapy.

Periostin (PN), as a soluble and secreted extracellular matrix protein, is highly expressed during embryonic development and injury or inflammation within adult organisms.⁵ Currently, the available literature has frequently detected that PN is also upregulated in various human malignant cancers, such as head and neck, thyroid, breast, lung, ovarian, colon, gastric, pancreatic, and liver.⁵⁻⁹ Some literature showed that PN played a significant role in biologic processes, including cell adhesion, proliferation, angiogenesis, tumor invasion, and metastatic growth.¹⁰ Additionally, PN embraces domains that can bind some integrins ($\alpha v\beta 3$ and $\alpha v\beta 5$) and their combination can activate downstream proteins by interacting with some cell surface receptors.^{5,11} Current research has indicated that PN expression is upregulated in cells that highly expressed both epidermal growth factor receptor (EGFR) and mutant p53 compared to control cells that highly expressed EGFR or mutant p53 alone. Meanwhile, PN protein expression in *in vitro* cells was decreased by inhibiting EGFR or restoring wild-type p53 signaling, suggesting that PN expression was modulated mechanistically by activating EGFR signaling and p53 mutation.¹¹ Besides studies of PN in *in vitro* cells, PN might be used to detect preneoplastic lesions in ESCC xenograft tumors of mice.¹² Up to now, few have reported the prognostic significance of PN and EGFR in patients with ESCC alone. According to the reaction of PN and EGFR in *in vitro* cells mentioned earlier, whether the coexpression of PN and EGFR as prognostic factors was superior to either PN or EGFR as a single marker for the ESCC patients still remains unknown.

The EGFR, also named c-erb-B1, is a 170 kDa transmembrane glycoprotein and belongs to receptor tyrosine kinases family.¹³ EGFR participates in many aspects of cell biology and can be activated not only by ligand-induced signaling but also by many more protein kinases, such as integrins, cytokine receptors, and adhesion receptors.¹⁴ Existing evidence suggests that increased expression of EGFR is involved in 50%–70% of esophageal cancer cases.^{13,15}

However, the results of EGFR tyrosine kinase inhibitors such as nimotuzumab used in the treatment of esophageal cancer remain poor. Liang et al¹⁶ demonstrated that the survival rate of 3 years among 42 patients with ESCC was only 26% after using nimotuzumab and radiotherapy.

Since EGFR and PN are both involved in multiple aspects of carcinogenesis, it is assumed that coexpression of EGFR and PN may affect the prognosis of the ESCC patients, which potentially offers a novel therapeutic target strategy. To testify the abovementioned hypothesis, the expression levels of EGFR and PN in 83 ESCC samples or corresponding paracarcinomatous normal tissues were observed by immunohistochemistry (IHC) in the present study. Moreover, the quantitative expression levels of PN and EGFR proteins in two fresh-frozen ESCCs and corresponding paracarcinomatous normal tissues were analyzed by Western blot analysis. Additionally, the survival analysis was performed by the Kaplan–Meier and Cox regression methods. All the above referred aspects aimed to demonstrate the expression of EGFR and PN in ESCC and its correlation with clinicopathological features and prognosis.

Patients and methods

Patients and tissue samples

Eighty-three ESCC patients who underwent curative esophageal resection between April 2009 and June 2011 and two patients who underwent curative resection of ESCC in May 2016 at Anhui Provincial Hospital, affiliated to Anhui Medical University, were enrolled in our single-center retrospective study. No patients received treatment for the tumor prior to the operation, and histological diagnoses after operation were confirmed by pathology according to the seventh edition of the American Joint Committee on Cancer criteria. All patients who had prior malignancies or a second primary tumor were excluded. Clinical and pathological data were obtained retrospectively from medical records. Telephone follow-ups were performed every 3 months from the dates of surgery to death or to follow-up deadlines (September 2015). All clinical and pathological data were used to analyze the correlation with PN and EGFR expression levels. The written consent was obtained from all participants, and this study was approved by the Research Ethics Committee of Anhui Provincial Hospital, Anhui Medical University.

Immunohistochemistry

The expression levels of EGFR and PN protein in tumors and corresponding paracarcinomatous normal tissues were detected by IHC staining using a two-step method. Briefly,

all formalin-fixed and paraffin-embedded esophageal cancer specimens were cut into sections of 4 μm thickness by paraffin microtome. After deparaffinization and rinse, antigen retrieval was accomplished by heating specimen slices incubated in pH 6.0 citrate buffer using a microwave oven. Endogenous peroxidases were blocked by using 3% hydrogen peroxide for 5 minutes followed by washing three times in buffer. The sections were then incubated with primary antibodies against respective target proteins (PN antibody [ab92460; Abcam Inc, Shanghai, People's Republic of China], EGFR antibody [ZM-0093; Zhongshan Jinqiao Co., Beijing, People's Republic of China]) at a dilution of 1:150 at room temperature for 2 hours. After incubating with secondary antibody (mouse antirabbit IgG; Zhongshan Jinqiao Co.) at room temperature for 30 minutes, diaminobenzidine (Zhongshan Jinqiao Co., Beijing, People's Republic of China) and hematoxylin were performed to visualize the staining of target proteins. The positive and negative controls were well-known positive tissue sections and slides processed with phosphate-buffered saline, respectively.

The stained slices were assessed independently by two experienced pathologists who were blinded to the diagnosis and prognosis. The IHC expression levels of PN and EGFR were scored partially using the percentage of positive cell and the staining intensity published in previous article.¹⁷ Grading of tumor cells' staining intensity was as follows: negative, 0; light yellow, 1; brownish-yellow, 2; and brown, 3. Grading of stain-positive tumor cells' distribution was as follows: stain-positive cells <5%, 0; stain-positive cells 5%–25%, 1; stain-positive cells 26%–50%, 2; and stain-positive cells >50%, 3.

$$\text{Score} = \text{Grade in percentage of positive cell} \times \text{Grade in stain intensity} \quad (1)$$

We regarded score ≥ 4 as the high expression group and the low expression group contained negative and low expressive samples.

Western blot analysis

Fresh-frozen tumor tissues and corresponding tumor-adjacent normal tissues of two ESCC patients were lysed using cell lysate buffer. After separation by 10% sodium dodecyl sulfate polyacrylamide gel electrophoresis, the protein extraction was transferred to polyvinylidene fluoride membranes (EMD Millipore, Billerica, MA, USA). The membranes were blocked by using 5% nonfat milk solution for 2 hours at room temperature and then incubated with primary antibodies

(PN antibody [1:800; Abcam Inc], EGFR antibody [1:250; Zhongshan Jinqiao Co.], and beta-actin antibody [1:400; Zhongshan Jinqiao Co.]) at 4°C overnight. The membrane was then incubated with antirabbit or antimouse secondary antibodies conjugated with horseradish peroxidase (1:20,000; Zhongshan Jinqiao Co.) for 1 hour at room temperature followed by washing with Tris-buffered saline Tween-20. Finally, the membrane was developed using the enhanced chemiluminescence systems. The computerized densitometer (ImageJ Launcher; Broken Symmetry Software, NIH, Bethesda, MD, USA) was used to quantify band intensities, and beta-actin was used to confirm that an equal amount of protein was loaded in each track.

Statistical analysis

Data were analyzed using SPSS Version 13.0 (SPSS Inc., Chicago, IL, USA) software. P -value <0.05 was considered as a significant difference. According to PN or EGFR status, the patients were categorized into high- or low-expression groups. χ^2 or Kruskal–Wallis test was used to detect a relationship between clinicopathologic parameters and PN or EGFR expression. The correlation between survival records and expression levels of proteins was conducted using the Kaplan–Meier curve and log-rank test. Multivariate analysis was assessed by using the Cox regression model.

Results

PN and EGFR expression in ESCC and adjacent normal esophageal tissues

In our study, a total of 83 primary ESCC sections and paired paracarcinomatous normal esophageal tissues were evaluated by IHC. The IHC scores in ESCC tumor were significantly higher than those in tumor-adjacent normal tissues ($P=0.000$; Figure 1). The staining scores in all the normal esophageal sections were <3. In this study, a high expression of PN in the tumor tissues was detected in 59 of 83 (71.1%) patients, whereas a low expression was observed in 24 of 83 (28.9%) patients. The high expression of PN was mainly detected in tumor cytoplasm and extracellular matrix around ESCC cells (Figure 2A–C), while normal esophageal tissues showed a weak or no staining.

The EGFR protein was also examined in 83 primary ESCC sections and paired paracarcinomatous normal esophageal tissues by IHC. The high expression of EGFR was detected in 54 of 83 (65.1%) patients, whereas low expression was observed in 29 of 83 (34.9%) patients. The EGFR expression in tumor-adjacent normal tissues was significantly lower than that in ESCC tissues ($P=0.000$; Figure 1). The expression of EGFR was mainly detected in

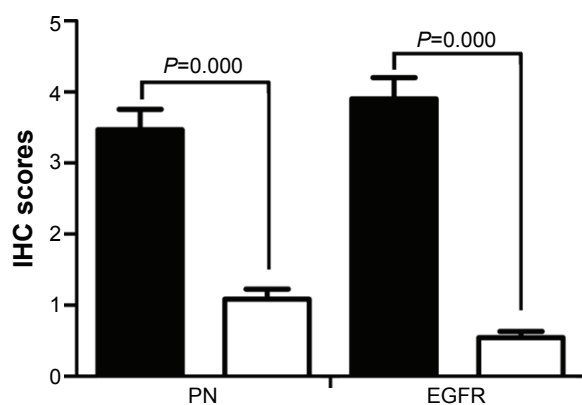


Figure 1 IHC scores of PN and EGFR expression in ESCC and tumor-adjacent normal tissues.

Notes: Proteins expressed in ESCC tumors (black bar graph), and proteins expressed in tumor-adjacent normal tissues (white bar graph). Error bars are SEs.

Abbreviations: IHC, immunohistochemistry; PN, periostin; EGFR, epidermal growth factor receptor; ESCC, esophageal squamous cell carcinoma.

ESCC cell membrane (Figure 2D–F), and the staining scores in normal esophageal sections were almost <2 .

Additionally, in order to further confirm the trends of expression, the expression levels of PN and EGFR proteins in two fresh-frozen ESCC and corresponding paracarcinomatous normal tissues were analyzed by Western blot analysis. The expression levels of PN and EGFR in ESCC were higher than those in the corresponding tumor-adjacent normal tissues, which was similar to the results of IHC analysis (Figure 3).

Relationship between PN, EGFR expression, and pathological characteristics

Based on immunohistochemical analysis, we compared the relationship between PN, EGFR expression, and pathological characteristics. As summarized in Table 1, the high expression of PN in ESCC tissues was significantly associated with tumor length ($P=0.044$), differentiation grade ($P=0.003$), venous invasion ($P=0.010$), invasion depth ($P=0.007$), lymphatic metastasis ($P=0.000$), and clinical stage ($P=0.000$). No significant association was observed between the high expression of PN and other clinicopathological parameters such as tumor location, gender, and age. In the present study, the high expression of EGFR protein in ESCC tissues was only significantly related to the lymphatic metastasis ($P=0.000$), invasion depth ($P=0.022$), and tumor stage ($P=0.000$). There was no significant correlation between EGFR and other clinicopathological parameters.

Correlation analysis of PN and EGFR

The relationship between the high expression of EGFR and PN is shown in Table 2. The high expression levels of both PN and EGFR were detected in 41 of 83 (49.4%) patients, while low or no expression was observed in 23 of 83 (27.7%) patients. The results also showed that a positive correlation occurred in the high expression levels of EGFR and PN ($r=0.531$; $P=0.001$; Table 2).

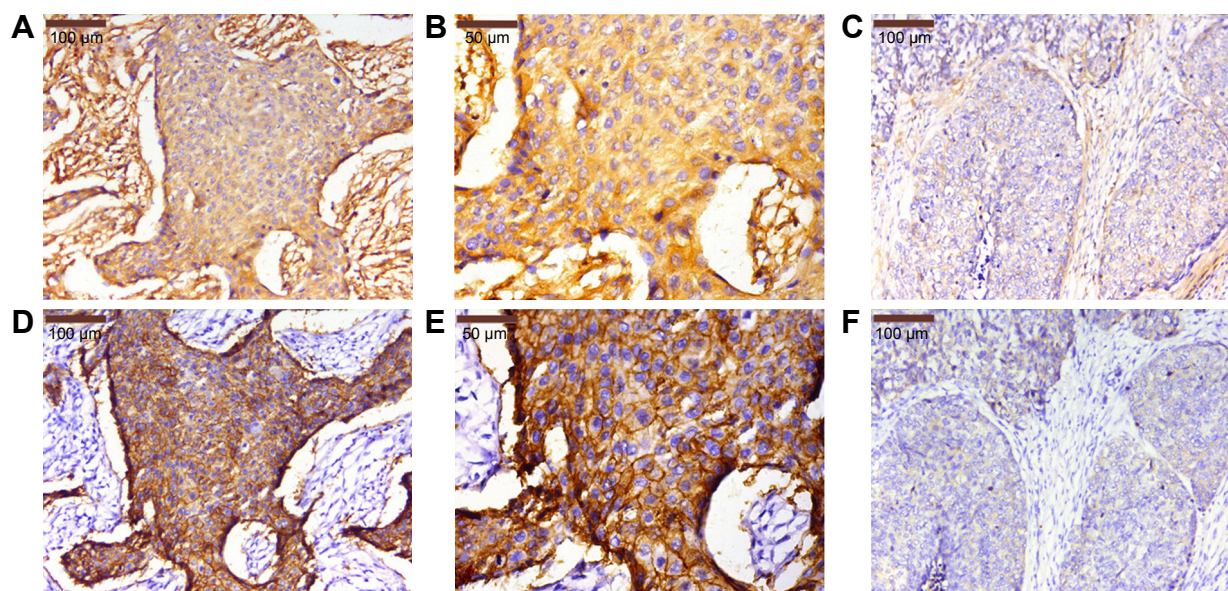


Figure 2 Expression levels of PN and EGFR in ESCC tissues by IHC.

Notes: (A and B) High expression of PN in ESCC tissues. (C and D) Low expression of PN in ESCC tissues. (E and F) High expression of EGFR in ESCC tissues. (G and H) Low expression of EGFR in ESCC tissues. (A and D) is $\times 200$ magnification, (B and E) is $\times 400$ magnification, and (C and F) is $\times 200$ magnification.

Abbreviations: PN, periostin; EGFR, epidermal growth factor receptor; ESCC, esophageal squamous cell carcinoma; IHC, immunohistochemistry.

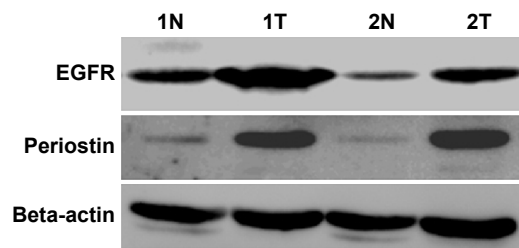


Figure 3 Western blot analysis of PN (90 kDa) and EGFR (170 kDa) proteins in two fresh-frozen ESCC and corresponding tumor-adjacent normal tissues.

Note: T, ESCC tissues, and N, corresponding tumor-adjacent normal tissues.

Abbreviations: PN, periostin; EGFR, epidermal growth factor receptor; ESCC, esophageal squamous cell carcinoma.

Survival analysis of PN and EGFR

According to the Kaplan–Meier analysis, disease-free survival (DFS) in patients with high expression of PN was shorter than that in patients with low expression of PN, with DFS time

Table 1 Relationship between PN, EGFR, and clinicopathological parameters in 83 ESCC patients

Characteristics	n	PN		EGFR			
		High	Low	P-value	High	Low	P-value
Gender				0.130			0.112
Male	47	30	17		34	13	
Female	36	17	19		20	16	
Age (years)				0.411			0.649
<60	26	13	13		16	10	
≥60	57	34	23		38	19	
Tumor length (cm)				0.044			0.052
<5	68	35	33		41	27	
≥5	15	12	3		13	2	
Tumor location				0.334			0.285
Upper	8	3	5		4	4	
Middle	44	25	19		28	16	
Low	31	19	12		22	9	
Invasion depth				0.007			0.022
pT1	8	1	7		2	6	
pT2	26	13	13		16	10	
pT3	49	33	16		36	13	
Differentiation grade				0.003			0.322
Well	18	4	14		9	9	
Moderate	51	33	18		36	15	
Poor	14	10	4		9	5	
Venous invasion				0.010			0.066
Yes	18	15	3		15	3	
No	65	32	33		39	26	
Lymphatic metastasis				0.000			0.000
Yes	47	35	12		39	8	
No	36	12	24		15	21	
Stage				0.000			0.000
I	16	3	13		4	12	
II	31	14	17		21	10	
III	36	30	6		30	6	

Note: Bold P-values are statistically significant.

Abbreviations: PN, periostin; EGFR, epidermal growth factor receptor; ESCC, esophageal squamous cell carcinoma; pT, pathological T stage.

Table 2 The correlation between expression levels of PN and EGFR (cases)

PN expression	EGFR expression		r	P-value
	Low (n=29)	High (n=54)		
Low (n=36)	23	13	0.531	0.000
High (n=47)	6	41		

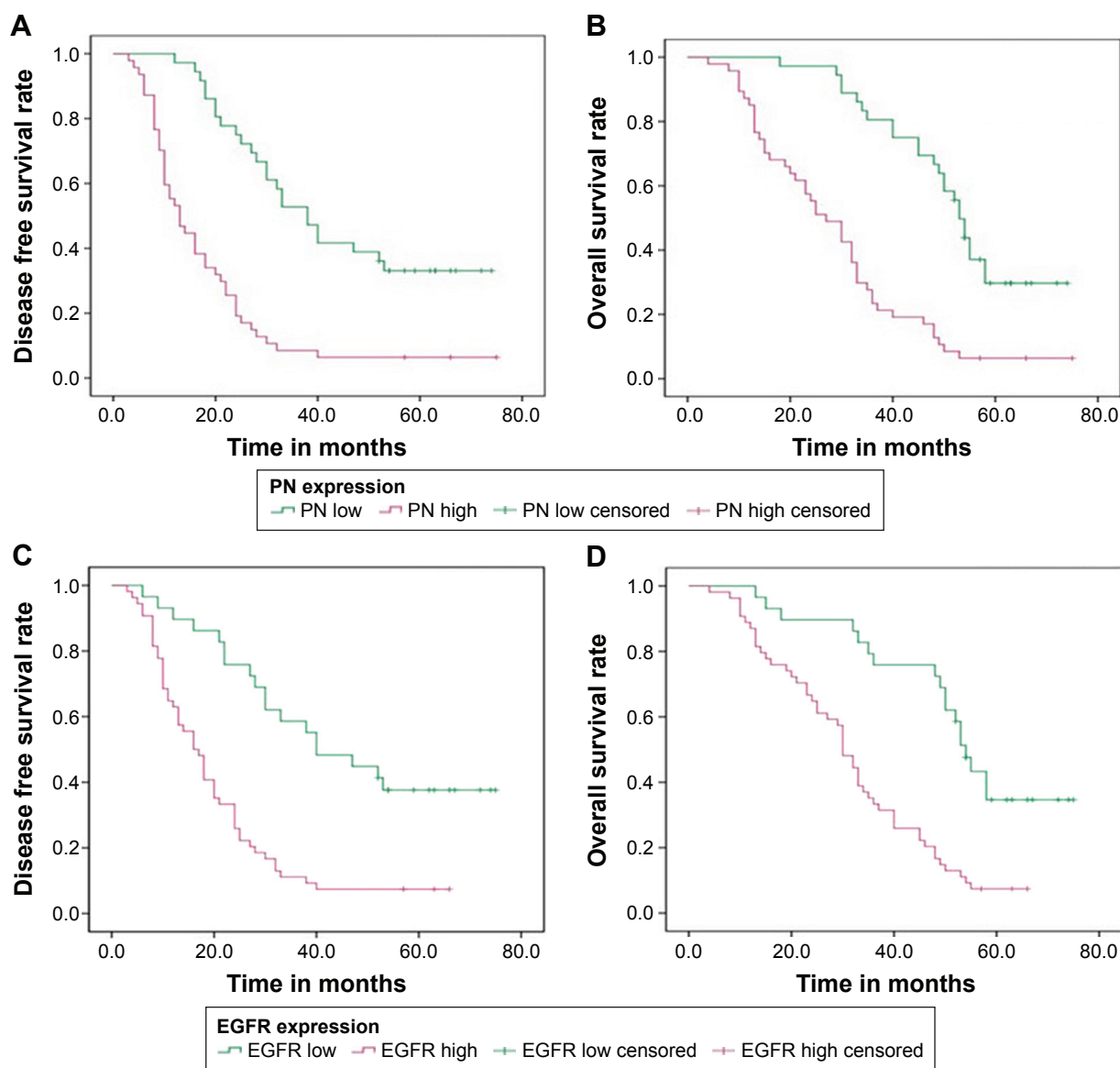
Abbreviations: PN, periostin; EGFR, epidermal growth factor receptor; r, Spearman's rank correlation coefficient.

of 18.77 ± 2.45 months and 44.40 ± 3.80 months, respectively ($P=0.000$; Figure 4A). Moreover, the overall survival (OS) in patients with high expression of PN was also worse than that in the patients with low expression of PN, with the OS time of 29.19 ± 2.53 months and 53.69 ± 2.72 months, respectively ($P=0.000$; Figure 4B). Using EGFR status as a stratification factor, similar results were also found in OS and DFS analyses. DFS and OS in patients with high expression of EGFR were shorter than those in the patients with low expression of EGFR (20.50 ± 2.12 months vs 46.52 ± 4.58 months and 31.80 ± 2.22 months vs 54.11 ± 3.61 months, respectively; both $P < 0.05$; Figure 4C and D).

To deeply understand the role of coexpression of PN and EGFR in prognosis, further analysis was made according to their status of coexpression. The coexpression of PN and EGFR only contained double-high expression of PN and EGFR in a single cell. Compared with PN or EGFR single marker, the coexpression of PN and EGFR dedicated worse prognosis, which might stratify patients more accurately (both $P < 0.05$; Figure 5A and B). Additionally, univariate analysis indicated that prognosis was significantly associated with PN ($P=0.000$), EGFR ($P=0.000$), invasion depth ($P=0.000$), differentiation grade ($P=0.006$), lymphatic metastasis ($P=0.000$), and tumor stage ($P=0.000$; Table 3). Moreover, as summarized in Table 4, multivariate Cox analysis indicated that PN expression and EGFR expression were independent prognostic factors. The risk of death for the ESCC patients with low expression of two biomarkers and high expression of single biomarker was 0.243 times ($P=0.000$) and 0.503 times ($P=0.030$), respectively, than that for patients with high expression of two biomarkers (Table 5).

Discussion

Currently, a growing number of studies concentrating on the relationship between the PN and cancers showed that PN was upregulated in various types of cancers.^{5–10} PN activated signaling pathways functioning in cellular survival, angiogenesis, resistance to hypoxia, tumor invasion, and



metastasis.⁵ As for ESCC, accumulative literature provided mounting evidence that PN played a notable role in tumor invasion, angiogenesis, and remodeling of the extracellular matrix for metastatic colonization.^{10,18} However, there were seldom studies about ESCC focusing on the relationships between PN and EGFR, as well as their coexpression levels in prognostic significance.

In this study, the expression levels of PN were analyzed in the primary ESCC tissues and matched with nontumorous ESCC tissues by IHC. As shown in Figure 1, IHC scores of PN were detectably higher in tumor tissues than those in the tumoradjacent normal tissues. Heidari et al¹⁹ demonstrated

that PN could be evaluated with targeted PET tracer in mice models implanted into TE-11 cells with high PN expression and that the positive rate of strong staining in ESCC was 67.3%. It suggested that the upregulated expression of PN was a common phenomenon in ESCC, which was consistent with previous research,^{10,18,19} and the different expression of PN might help distinguish ESCC from adjacent normal tissues. Luo et al²⁰ found that PN overexpression in tumor was significantly associated with lymph node metastasis, adventitia invasion, and tumor-node-metastasis (TNM) stage, which had been further confirmed in the research of Wang et al.¹⁰ However, the relationship between PN

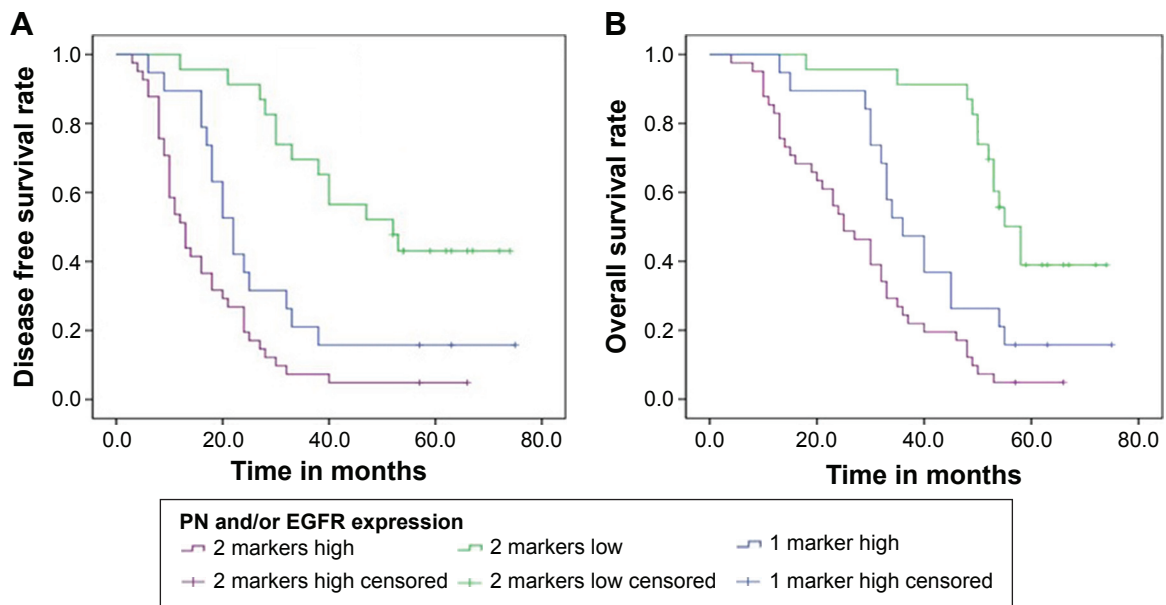


Figure 5 Kaplan-Meier survival curves of DFS and OS based on the coexpression of PN and EGFR.

Notes: (A) DFS curve of ESCC patients based on coexpression of PN and EGFR expression. (B) OS curve of ESCC patients based on coexpression of PN and EGFR expression. All $P < 0.05$.

Abbreviations: DFS, disease-free survival; OS, overall survival; PN, periostin; EGFR, epidermal growth factor receptor; ESCC, esophageal squamous cell carcinoma.

expression and tumor differentiation had conflict in the abovementioned reports, which might be caused by the different methods of immunohistochemical evaluation and selection of specimens. In this research, apart from lymphatic metastasis, TNM stage, venous invasion in ESCC, differentiation grade, and tumor length had a significant correlation with the high expression of PN. Further assessment revealed that patients with high expression of PN had inferior OS and DFS than those with low expression of PN. High expression of PN implies poor prognosis in ESCC, which suggested that PN might support a potential microenvironment for tumor growth and invasion and then affect the prognosis of ESCC patients.^{5,10}

The successful treatment of anti-EGFR in non-small-cell lung cancer and colorectal cancer aroused interests of scholars in whether it would be used in esophageal cancer. Although overexpression of EGFR in 40%–80% of esophageal cancer had been reported in previous literature,^{21,22} Jia et al¹⁵ found that the objective response rate of combined nimotuzumab and chemotherapy in ESCC was 55.6% in the EGFR-high group and 54.1% in the control group, suggesting that a high expression of EGFR in patients using nimotuzumab could not be an ideal prediction. Preexisting literature showed that an abnormal expression of EGFR was closely related to clinicopathological features such as differentiation, lymphatic metastasis, and stage.^{21–23} Besides lymphatic metastasis and stage, the high expression of EGFR was also

significantly correlated with invasion depth in this study; however, there was no relationship between differentiation and EGFR expression. At this stage, the role of EGFR as a predictive factor in ESCC still remained unclear. Some researchers believed that the EGFR overexpression in ESCC patients could predict prognosis.^{21,23,24} In this research, the patients with low expression of EGFR had better OS and DFS than those with high expression of EGFR, which was consistent with the abovementioned studies. However, EGFR as a predictor for ESCC could not be confirmed at EGFR gene or mRNA levels in a previous article.²² The inconsistent conclusions might be due to differences in samples and methods for scoring EGFR expression. Larger and further studies are needed to demonstrate the reason for this discrepancy.

To deeply understand the prognostic values of PN and EGFR, the effects of their coexpression were observed on prognosis in the ESCC patients. Interestingly, the risk of death for patients with low expression of two biomarkers and high expression of single biomarker was 0.243 times and 0.503 times, respectively, than that for patients with high expression of two biomarkers. The abovementioned results raised hypothesis that PN combined with EGFR was more effective for prognosis than the single marker in the ESCC patients. By Spearman's rank correlation test, there existed a positive correlation between these two markers with high expression. Compared with the control group, invasion of the

Table 3 Univariate analysis of characteristics associated with survival time

Characteristics	DFS		OS	
	95% CI	P-value	95% CI	P-value
PN		0.000		0.000
Low	36.956–51.836		48.360–59.017	
High	13.966–23.566		24.236–34.147	
EGFR		0.000		0.000
Low	37.550–55.485		47.035–61.181	
High	16.351–24.649		27.441–36.152	
Gender		0.373		0.331
Male	21.271–34.687		31.852–44.027	
Female	24.945–40.166		35.867–49.036	
Age (years)		0.584		0.546
<60	19.137–37.152		29.366–45.160	
≥60	24.655–36.853		35.689–46.615	
Tumor length (cm)		0.264		0.220
<5	25.480–37.151		35.969–46.099	
≥5	15.396–31.804		25.374–43.426	
Tumor location		0.649		0.619
Upper/middle	17.835–30.165		35.037–46.600	
Low	15.569–26.431		30.543–42.877	
Invasion depth		0.000		0.000
pT1/pT2	36.041–54.311		44.896–59.614	
pT3	15.947–22.216		27.001–35.489	
Differentiation grade		0.005		0.006
Well/moderate	26.948–38.574		37.663–47.527	
Poor	11.006–22.137		18.018–35.982	
Venous invasion		0.766		0.673
Yes	18.797–44.425		29.625–51.486	
No	24.072–34.786		34.771–44.482	
Lymphatic metastasis		0.000		0.000
Yes	14.575–22.787		25.498–34.459	
No	35.893–51.616		45.828–58.365	
Stage		0.000		0.000
I/II	35.340–49.321		45.546–56.700	
III	11.563–16.381		21.328–29.295	

Note: Bold P-values are statistically significant.

Abbreviations: DFS, disease-free survival; OS, overall survival; CI, confidence interval; PN, periostin; EGFR, epidermal growth factor receptor; pT, pathological T stage.

epithelium into the underlying mesenchymal extracellular matrix showed a minor increase in esophageal cells, which overexpressed EGFR and PN. However, the invasion of ESCC cell lines that overexpressed PN and EGFR was less than those that overexpressed PN and mutant p53.²⁵ The underlying detailed mechanisms will be explored in our further studies. Up to now, the available cumulative findings demonstrated that PN binding to the integrins ($\alpha v\beta 3$ and $\alpha v\beta 5$) regulated phosphatidylinositol-3-kinase-Akt and/or other signaling pathways that promoted tumor invasion and metastasis.²⁶ It is worthy of further investigations to verify potential and deep molecular mechanisms of PN and EGFR.

Our study mainly contributed to the prognosis and stratification of ESCC patients by effective molecular markers, in order to offer a potential therapeutic target for ESCC in future. There were some limitations in the present research, which are as follows: it was a retrospective study, the sample size was not large, and the expression levels of PN and EGFR were only examined by IHC and Western blot analyses, without testing mRNA levels and their function by cell experiment in vitro. Hence, future research is still necessary to further elucidate these hypotheses.

Conclusion

Our research found that both PN and EGFR are overexpressed in ESCC sections compared with paracarcinomatous normal esophageal tissues. Both of them were related to miscellaneous clinicopathologic characteristics and their high expression levels had predictive values on ESCC development and progression. Furthermore, the coexpression of PN and EGFR can be used to predict ESCC patients with different prognoses, which may offer a novel and potential target strategy for ESCC treatment in the future.

Table 4 Multivariate analysis of clinicopathologic features associated with OS and DFS

Clinicopathologic features	OS			DFS		
	HR	95% CI	P-value	HR	95% CI	P-value
PN (high vs low)	3.461	1.760–6.807	0.000	2.392	1.210–4.728	0.012
EGFR (high vs low)	2.246	1.060–4.759	0.035	2.118	1.012–4.435	0.046
Gender (male vs female)	0.961	0.563–1.639	0.883	0.814	0.477–1.389	0.449
Age (<60 years vs ≥60 years)	0.599	0.339–1.057	0.077	0.600	0.337–1.071	0.084
Tumor length (<5 cm vs ≥5 cm)	0.877	0.443–1.736	0.707	1.081	0.557–2.100	0.817
Tumor location (upper/middle vs low)	0.924	0.544–1.568	0.769	0.868	0.507–1.486	0.606
Invasion depth (pT3 vs pT1/pT2)	3.445	1.770–6.705	0.000	3.556	1.789–7.070	0.000
Differentiation grade (poor vs well/moderate)	2.211	1.132–4.318	0.020	1.935	1.002–3.736	0.049
Venous invasion (yes vs no)	0.475	0.233–0.968	0.041	0.617	0.311–1.225	0.168
Lymphatic metastasis (yes vs no)	0.890	0.330–2.399	0.818	1.299	0.494–3.412	0.596
Stage (III vs I/II)	3.331	1.262–8.780	0.015	2.906	1.114–7.580	0.029

Note: Bold P-values are statistically significant.

Abbreviations: OS, overall survival; DFS, disease-free survival; HR, hazard ratio; CI, confidence interval; PN, periostin; EGFR, epidermal growth factor receptor; pT, pathological T stage.

Table 5 Multivariate analysis of correlation between clinicopathologic factors and survival

Clinical factors	B	SE	Wald	P-value	HR (95% CI)
Invasion depth	1.070	0.323	10.992	0.001	2.914 (1.548–5.484)
Differentiation grade	0.883	0.319	7.667	0.006	2.418 (1.294–4.518)
Lymphatic metastasis	0.131	0.452	0.083	0.773	1.140 (0.470–2.764)
TNM stage	1.144	0.486	5.550	0.018	3.319 (1.212–8.131)
PN/EGFR			15.117	0.001	
PN/EGFR single marker with high expression*	–0.688	0.317	4.691	0.030	0.503 (0.270–0.937)
PN/EGFR two markers with low/no expression*	–1.414	0.380	13.855	0.000	0.243 (0.115–0.512)

Note: *Compared with PN/EGFR two markers with high expression.

Abbreviations: SE, standard error; HR, hazard ratio; CI, confidence interval; TNM, tumor–node–metastasis; PN, periostin; EGFR, epidermal growth factor receptor.

Acknowledgment

This work was partly supported by National Natural Science Foundation of China (81472329 and 81201906).

Disclosure

The authors report no conflicts of interest in this work.

References

- Pennathur A, Gibson MK, Jobe BA, Luketich JD. Oesophageal carcinoma. *Lancet (London, England)*. 2013;381(9864):400–412.
- Ohashi S, Miyamoto S, Kikuchi O, Goto T, Amanuma Y, Muto M. Recent advances from basic and clinical studies of esophageal squamous cell carcinoma. *Gastroenterology*. 2015;149(7):1700–1715.
- Rustgi AK, El-Serag HB. Esophageal carcinoma. *N Engl J Med*. 2014;371(26):2499–2509.
- Ferlay J, Soerjomataram I, Dikshit R, et al. Cancer incidence and mortality worldwide: sources, methods and major patterns in GLOBOCAN 2012. *Int J Cancer*. 2015;136(5):E359–E386.
- Liu AY, Zheng H, Ouyang G. Periostin, a multifunctional matricellular protein in inflammatory and tumor microenvironments. *Matrix Biol*. 2014;37:150–156.
- Liu Y, Du L. Role of pancreatic stellate cells and periostin in pancreatic cancer progression. *Tumour Biol*. 2015;36(5):3171–3177.
- Zhu M, Fejzo MS, Anderson L, et al. Periostin promotes ovarian cancer angiogenesis and metastasis. *Gynecol Oncol*. 2010;119(2):337–344.
- Hong LZ, Wei XW, Chen JF, Shi Y. Overexpression of periostin predicts poor prognosis in non-small cell lung cancer. *Oncol Lett*. 2013;6(6):1595–1603.
- Lee YJ, Kim IS, Park SA, et al. Periostin-binding DNA aptamer inhibits breast cancer growth and metastasis. *Mol Ther*. 2013;21(5):1004–1013.
- Wang W, Sun QK, He YF, et al. Overexpression of periostin is significantly correlated to the tumor angiogenesis and poor prognosis in patients with esophageal squamous cell carcinoma. *Int J Clin Exp Pathol*. 2014;7(2):593–601.
- Michaylira CZ, Wong GS, Miller CG, et al. Periostin, a cell adhesion molecule, facilitates invasion in the tumor microenvironment and annotates a novel tumor-invasive signature in esophageal cancer. *Cancer Res*. 2010;70(13):5281–5292.
- Wong GS, Habibollahi P, Heidari P, et al. Optical imaging of periostin enables early endoscopic detection and characterization of esophageal cancer in mice. *Gastroenterology*. 2013;144(2):294–297.
- Li JC, Zhao YH, Wang XY, et al. Clinical significance of the expression of EGFR signaling pathway-related proteins in esophageal squamous cell carcinoma. *Tumour Biol*. 2014;35(1):651–657.
- Normanno N, De Luca A, Bianco C, et al. Epidermal growth factor receptor (EGFR) signaling in cancer. *Gene*. 2006;366(1):2–16.
- Jia J, Cui Y, Lu M, et al. The relation of EGFR expression by immunohistochemical staining and clinical response of combination treatment of nimotuzumab and chemotherapy in esophageal squamous cell carcinoma. *Clin Transl Oncol*. Epub 2015 Oct 12.
- Liang J, E M, Wu G, et al. Nimotuzumab combined with radiotherapy for esophageal cancer: preliminary study of a Phase II clinical trial. *Onco Targets Ther*. 2013;6:1589–1596.
- Li Z, Zhang X, Yang Y, et al. Periostin expression and its prognostic value for colorectal cancer. *Int J Mol Sci*. 2015;16(6):12108–12118.
- Kashyap MK, Marimuthu A, Peri S, et al. Overexpression of periostin and lumican in esophageal squamous cell carcinoma. *Cancers*. 2010;2(1):133–142.
- Heidari P, Esfahani SA, Turker NS, et al. Imaging of secreted extracellular periostin, an important marker of invasion in the tumor microenvironment in esophageal cancer. *J Nucl Med*. 2015;56(8):1246–1251.
- Luo JH, Zhou J, Gao Y. Correlation between periostin and SNCG and esophageal cancer invasion, infiltration and apoptosis. *Asian Pac J Trop Med*. 2013;6(7):516–519.
- Wang Q, Zhu H, Xiao Z, et al. Expression of epidermal growth factor receptor is an independent prognostic factor for esophageal squamous cell carcinoma. *World J Surg Oncol*. 2013;11:278.
- Zhang L, Wang Y, Bai G, Zhang J, Yang M, Ma X. The relationship between the expression of VEGF, EGFR, and HER-2 mRNA in esophageal squamous cell carcinoma (ESCC) and clinicopathological features of different ethnic groups in Xinjiang. *Tumour Biol*. 2015;36(12):9277–9283.
- Zhang W, Zhu H, Liu X, et al. Epidermal growth factor receptor is a prognosis predictor in patients with esophageal squamous cell carcinoma. *Ann Thorac Surg*. 2014;98(2):513–519.
- Jiang D, Li X, Wang H, et al. The prognostic value of EGFR overexpression and amplification in esophageal squamous cell carcinoma. *BMC Cancer*. 2015;15:377.
- Wong GS, Lee JS, Park YY, et al. Periostin cooperates with mutant p53 to mediate invasion through the induction of STAT1 signaling in the esophageal tumor microenvironment. *Oncogenesis*. 2013;2(8):e59.
- Utispan K, Sonongbua J, Thuwajit P, et al. Periostin activates integrin alpha5beta1 through a PI3K/AKT dependent pathway in invasion of cholangiocarcinoma. *Int J Oncol*. 2012;41(3):1110–1118.

OncoTargets and Therapy

Dovepress

Publish your work in this journal

OncoTargets and Therapy is an international, peer-reviewed, open access journal focusing on the pathological basis of all cancers, potential targets for therapy and treatment protocols employed to improve the management of cancer patients. The journal also focuses on the impact of management programs and new therapeutic agents and protocols on

patient perspectives such as quality of life, adherence and satisfaction. The manuscript management system is completely online and includes a very quick and fair peer-review system, which is all easy to use. Visit <http://www.dovepress.com/testimonials.php> to read real quotes from published authors.

Submit your manuscript here: <http://www.dovepress.com/oncotargets-and-therapy-journal>