

CORRECTION

# Correction: Changes to Serum Sample Tube and Processing Methodology Does Not Cause Inter-Individual Variation in Automated Whole Serum N-Glycan Profiling in Health and Disease

Nicholas T. Ventham, Richard A. Gardner, Nicholas A. Kennedy, Archana Shubhakar, Rahul Kalla, Elaine R. Nimmo, IBD-BIOM Consortium, Daryl L. Fernandes, Jack Satsangi, Daniel I. R. Spencer

There is an error in the title of this article: "Inter-Individual" should be "Intra-Individual." The correct title is: Changes to Serum Sample Tube and Processing Methodology Does Not Cause Intra-Individual Variation in Automated Whole Serum N-Glycan Profiling in Health and Disease.

The correct citation is: Ventham NT, Gardner RA, Kennedy NA, Shubhakar A, Kalla R, Nimmo ER, et al. (2015) Changes to Serum Sample Tube and Processing Methodology Does Not Cause Intra-Individual Variation in Automated Whole Serum N-Glycan Profiling in Health and Disease. PLoS ONE 10(4): e0123028. doi:[10.1371/journal.pone.0123028](https://doi.org/10.1371/journal.pone.0123028).

There is also an error in the caption for [Fig 2](#): "glucose homopolymer (GHP)" should be "glycans." Please see the correct caption here.

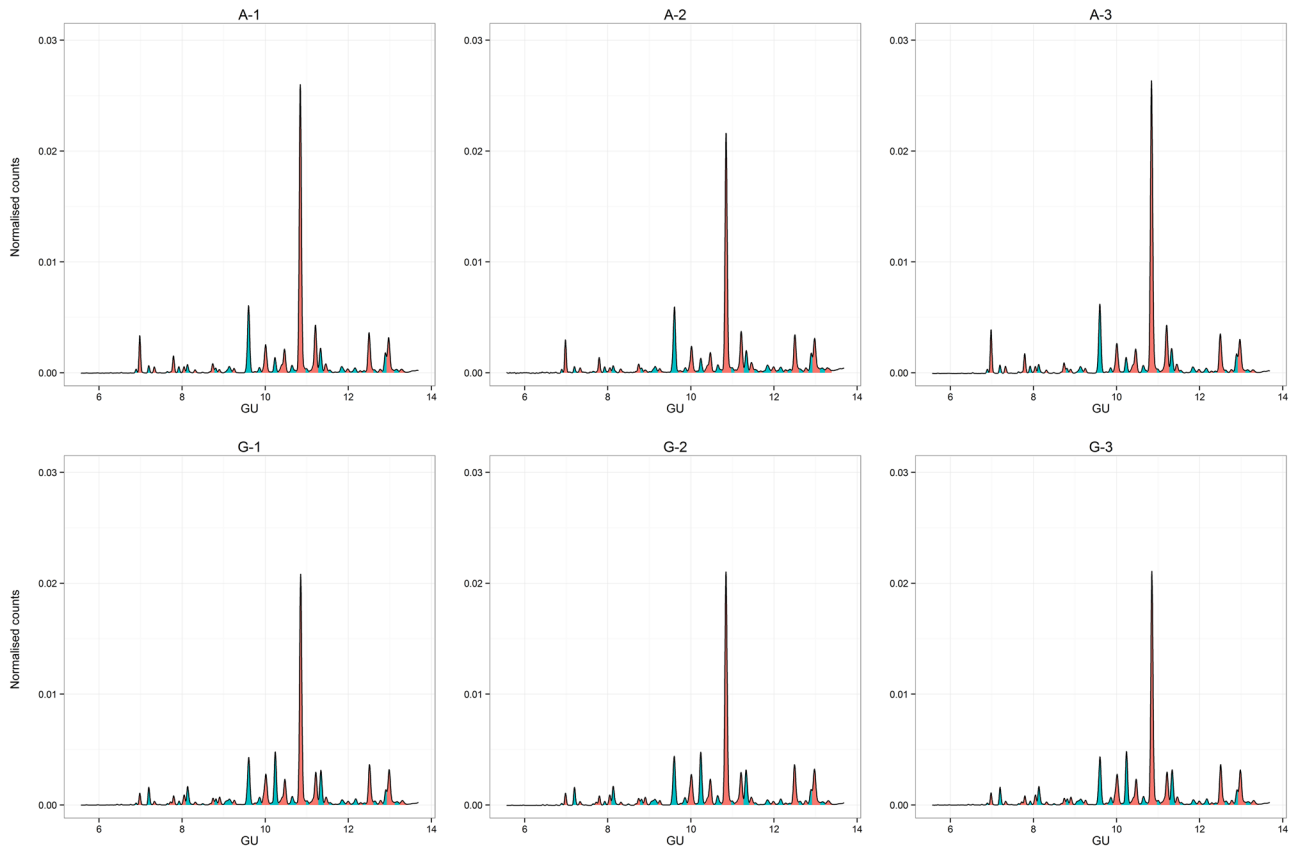


 OPEN ACCESS

**Citation:** Ventham NT, Gardner RA, Kennedy NA, Shubhakar A, Kalla R, Nimmo ER, et al. (2015) Correction: Changes to Serum Sample Tube and Processing Methodology Does Not Cause Inter-Individual Variation in Automated Whole Serum N-Glycan Profiling in Health and Disease. PLoS ONE 10(6): e0129335. doi:[10.1371/journal.pone.0129335](https://doi.org/10.1371/journal.pone.0129335)

**Published:** June 1, 2015

**Copyright:** © 2015 Ventham et al. This is an open access article distributed under the terms of the [Creative Commons Attribution License](https://creativecommons.org/licenses/by/4.0/), which permits unrestricted use, distribution, and reproduction in any medium, provided the original author and source are credited.



**Fig 2. Fluorescence chromatogram showing a 2-aminobenzamide labeled glycans run on a UHPLC HILIC column.** Fig 2A–2C and 2D–2F are derived from different patients respectively. Peaks are labeled arbitrarily in order from 1 to 42, with glucose unit values according to Guile et al [22] Peaks are colored alternately to aid identification.

doi:10.1371/journal.pone.0129335.g001

## Reference

1. Ventham NT, Gardner RA, Kennedy NA, Shubhakar A, Kalla R, Nimmo ER, et al. (2015) Changes to Serum Sample Tube and Processing Methodology Does Not Cause Inter-Individual Variation in Automated Whole Serum N-Glycan Profiling in Health and Disease. *PLoS ONE* 10(4): e0123028. doi: [10.1371/journal.pone.0123028](https://doi.org/10.1371/journal.pone.0123028) PMID: [25831126](https://pubmed.ncbi.nlm.nih.gov/25831126/)