

RESEARCH

Open Access



Prognostic stratification improvement by integrating ID1/ID3/IGJ gene expression signature and immunophenotypic profile in adult patients with B-ALL

Nataly Cruz-Rodriguez^{1,2,3}, Alba L. Combata^{1,2,4*}, Leonardo J. Enciso^{1,5}, Lauren F. Raney^{6,7}, Paula L. Pinzon², Olga C. Lozano², Alba M. Campos⁸, Niyireth Peñaloza⁸, Julio Solano⁸, Maria V. Herrera⁸, Jovanny Zabaleta^{9,10} and Sandra Quijano^{8,11*}

Abstract

Background: Survival of adults with B-Acute Lymphoblastic Leukemia requires accurate risk stratification of patients in order to provide the appropriate therapy. Contemporary techniques, using clinical and cytogenetic variables are incomplete for prognosis prediction.

Methods: To improve the classification of adult patients diagnosed with B-ALL into prognosis groups, two strategies were examined and combined: the expression of the *ID1/ID3/IGJ* gene signature by RT-PCR and the immunophenotypic profile of 19 markers proposed in the EuroFlow protocol by Flow Cytometry in bone marrow samples.

Results: Both techniques were correlated to stratify patients into prognostic groups. An inverse relationship between survival and expression of the three-genes signature was observed and an immunophenotypic profile associated with clinical outcome was identified. Markers CD10 and CD20 were correlated with simultaneous overexpression of *ID1*, *ID3* and *IGJ*. Patients with simultaneous expression of the poor prognosis gene signature and overexpression of CD10 or CD20, had worse Event Free Survival and Overall Survival than patients who had either the poor prognosis gene expression signature or only CD20 or CD10 overexpressed.

Conclusion: By utilizing the combined evaluation of these two immunophenotypic markers along with the poor prognosis gene expression signature, the risk stratification can be significantly strengthened. Further studies including a large number of patients are needed to confirm these findings.

Keywords: B-ALL, Risk-stratification, Survival, Gene-expression, Immunophenotype

Background

B-ALL is a malignant hematological disorder, with heterogeneous clinical, cellular and molecular characteristics, response to therapy and risk of relapse [1, 2]. Biologically, significant advances in the identification and molecular characterization of genetic alterations that have an important role in the biology and evolution

of B-ALL have been described [3]. In adult patients, B-ALL has a poor clinical outcome and low survival rates with an estimated rate of complete remission (CR) of 75% and disease-free survival (DFS) lower than 30% [4–7]. Currently, the criteria used to stratify patients into risk groups at diagnosis is based on a range of variables that include age at diagnosis, white blood cell count (WBCC), and cytogenetic and chromosomal alterations [8, 9]. However, applying these variables for risk assessment may be inadequate because some patients initially classified as standard risk group with favorable prognostic features, may experience treatment failure, relapse

* Correspondence: acombita@cancer.gov.co; squijano@javeriana.edu.co

¹Programa de Investigación e Innovación en Leucemias Agudas y Crónicas (PILAC), Instituto Nacional de Cancerología, Bogotá, Colombia

⁸Hospital Universitario San Ignacio, Bogotá, Colombia

Full list of author information is available at the end of the article



and/or death during the course of their disease [10]. Therefore, it is necessary to implement new and better strategies to be able to properly classify patients into risk groups from the time of diagnosis, in order to minimize the risk of both relapse of disease and death by toxicity to drugs caused by overtreatment.

The analysis of acute leukemia by Flow Cytometry (FCM), performed in all patients at diagnosis, is of great significance in routine clinical practice for the classification and monitoring of diseases in conjunction with morphological cytogenetic and molecular analysis [11]. Immunophenotyping has provided relevant information for the diagnosis, classification and monitoring of hematological malignancies [12]. Consequently, the assessment of immunophenotype by FCM has become essential and is part of the current World Health Organization (WHO) classification of hematological malignancies.

In 2006 the European Union-supported EuroFlow Consortium (EU-FP6, LSHB-CT-2006-018708) started a project aimed at the prospective design and evaluation of panels of antibodies for the diagnosis and classification of the most frequent subtypes of leukemias and lymphomas, in which immunophenotyping has proven to be relevant [13]. Particularly, in the study of acute leukemias EuroFlow has contributed in the development of highly sensitive and standardized FCM. These protocols describe the optimal antibody panels, the design and evaluation of adequate standard operating procedures (SOPs) for instrument setup, fluorescence compensation and sample preparation and elaboration of adequate software tools for the overall evaluation of the phenotypic profiles obtained [13]. These advances have significantly improved detection of Minimal Residual Disease (MRD), which assesses response to therapy, and is an important prognostic indicator.

Another useful tool that has improved the understanding of the pathogenesis and cell biology of acute leukemias is the detection of chromosomal rearrangements. Various studies have shown that chromosomal rearrangements, compared with other molecular techniques, can determine the prognosis of the disease more accurately [8, 9]. In addition, while many isolated chromosomal rearrangements are not able to induce leukemia in experimental models on their own, the development of high-resolution profiles of genetic alterations have further improved the understanding of the genetic basis of this disease. However, in approximately 50% of B-ALL cases these chromosomal abnormalities are not observed, suggesting that additional submicroscopic genetic alterations contribute to leukemogenesis [10].

For over a decade the identification of numerical alterations of DNA (gain and loss) has been possible through molecular techniques such as sequencing and microarrays

[14]. These alterations, which are different from translocations, can define new disease subtypes and affect the response to treatment. Similarly, these alterations may constitute groups of genetic alterations that together contribute to the establishment and persistence of malignant clones and clonal evolution of tumor cells [15–20]. Many of the altered genes encode regulators of lymphoid development, cell cycle, tumor suppressors or lymphoid signaling molecules [16, 21].

Some studies using DNA microarray technology are in progress in the hopes of identifying novel markers of relapse in this patient subgroup. We have recently described, for the first time, a 3-gene signature, *ID1/ID3/IGJ*, that when highly expressed constitutes a poor prognostic factor in B-ALL adult patients with impact in low rates of CR, poor OS and shorter EFS [22]. ID family genes (as *ID1* and *ID3*) are transcription factors, inhibitors of differentiation, and proliferation and cell cycle regulators [23]. ID genes have been associated with the biology and pathogenesis of various cancer models, including breast, brain, colorectal, prostate, ovary, liver and pancreas [23, 24]. We hypothesize that our 3-gene signature could be implemented in routine diagnostic evaluation to make a more accurate classification of patients into risk groups. In this work we assessed the relationship between the molecular signature *ID1/ID3/IGJ* and the EuroFlow immunophenotypic features, to determine the prognosis of patients at the diagnosis in a comprehensive and accurate way.

Methods

Patients and samples

Forty-one bone marrow samples and two peripheral blood samples obtained at diagnosis from 43 B-ALL adult patients (19 women and 24 men; median age 30; age range 16–63 years old) were analyzed in this study. All the individuals provided written informed consent prior to enrolling in the study, and the study was approved by the Ethics Committees of the participating centers (Instituto Nacional de Cancerología and Hospital Universitario San Ignacio, Bogotá, Colombia). As inclusion criteria, all patients were older than 15 years who had not received previous chemotherapy treatment. The diagnosis of B-ALL was confirmed by myelogram analysis in bone marrow and biopsy aspirates and by immunophenotypic analysis by FCM. The average percentage of tumor infiltration in bone marrow, detected by FCM, was 82% (range 20–95%) and in peripheral blood was 189 blasts/uL (range 0–210600). Samples of normal bone marrow from three patients with diagnosis of solid tumors in CR, without infiltration of bone marrow and therefore without hematologic abnormalities, were used as control.

Gene expression analysis by Real Time PCR

This analysis was performed as we have previously reported [22]. Briefly, the gene expression signature was validated by RT-PCR using TaqMan probes to quantify the expression levels of *ID1*, *ID3* and *IGJ* mRNA. The reaction was amplified in a QuantStudio 12 K plex Real-Time PCR machine (Applied Biosystems). The $2^{-\Delta\Delta CT}$ method was used to estimate the fold induction of each gene using *GAPDH* and an internal calibrator as controls. RT-PCR assays were done in triplicate.

Immunophenotyping analysis by flow cytometry

Immunophenotype analysis for all samples was performed using the panel of antibodies recommended and standardized by the European consortium EuroFlow [12]. The B lymphoblasts phenotype was determined using antibody combinations in eight different fluorescences (V450, V500c, FITC, PE, PerCpCy5.5, PECy7, APC, APCH7). The immunophenotyping panel included backbone markers present in all tubes, allowing the identification of the blast population (CD34, CD19 and CD45), characterization markers useful to distinguish B- development patterns (CD20, CD10, kappa, lambda, SmlgM, cyIgM, CD24, CD22, nTdT, CD58, CD9 and CD38), myeloid-lineage associated markers, which can be expressed aberrantly in >80% of B-ALL cases (CD66, CD13, CD33, CD117) [12, 25]. After the labeling, the samples were acquired on a BDB FACSCanto II flow cytometer, using the FACSDiva (BDB) software program. Fifty thousand events were collected per sample. Data analysis was performed with the program INFINICYT TM (Cytognos SL, Salamanca, Spain) to determine the expression level and mean fluorescence intensity (MFI) for each of the antigens in the cells. Cell populations were classified as positive for each marker if the expression (percentage and MFI) was higher than that was observed in the negative control (basal autofluorescence basal cells without antibody). In addition, the MFI of each marker in leukemic populations was compared to the MFI of the same marker in normal bone marrow B-cell populations (normal counterpart) to define whether the analyzed marker was negative, under-expressed or overexpressed on the blast population [26]. The panel of 19 markers was evaluated in 42 patient samples at baseline to confirm the diagnosis of B-ALL and after induction chemotherapy to detect the presence of disease (MRD). Instrument setup, calibration and quality control were performed during the study using standard commercial reagents (BD Cytometer Setup and Tracking Beads and BD Comp Beads; BD), according to the manufacturer's instructions.

Statistical analysis

Clustering analyses and heatmaps were performed using R-project (www.r-project.org), GenomeStudio (Illumina)

and Gene set Enrichment Analysis (GSEA, <http://software.broadinstitute.org/gsea/index.jsp>). Statistical analysis was performed using SPSS software (version 22 for windows) and *R*. *p*-values that were <0.05 were considered statistically significant. Survival analyses were estimated by Kaplan-Meier curves and differences between the survival functions were assessed with the log-rank test. GraphPad graphic software was used to plot the immunophenotype markers expression data.

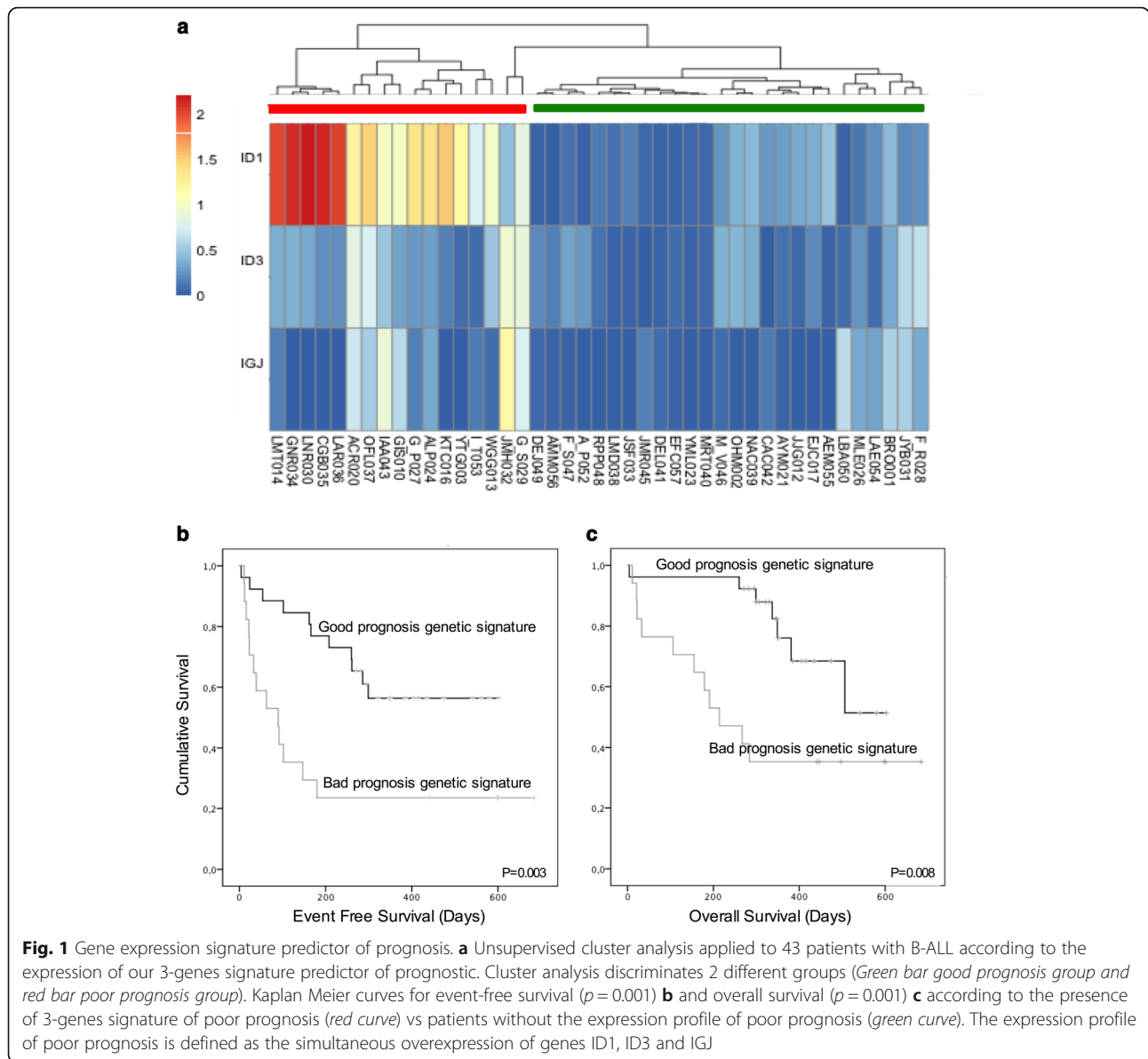
Results

ID1/ID3/IGJ gene expression signature is a variable with high prognostic impact in adult B-ALL patients

To analyze the prognostic relevance of molecular signatures defined by gene expression profiling in adult B-ALL, we analyzed 43 primary leukemia samples using gene expression microarrays and confirmed the most relevant findings with RT-PCR [22]. Unsupervised clustering analysis according to the three most differentially expressed genes (*ID1*, *ID3*, and *IGJ*) between responders and non-responders, revealed the presence of two robust clusters of samples with different gene expression profiles, and with different clinical characteristics. The first cluster (green bar in Fig. 1a), was characterized by a gene expression signature related to a good prognosis: younger patients (<30 years old), lower WBCC (<30.000/ul), and lower tumor load at diagnosis in both bone marrow and peripheral blood at the time of diagnosis; in addition, 94% of the patients in this group achieved CR. In contrast, the second cluster, referred here as a predicted poor prognosis group (red bar in Fig. 1a) included 40% of patients with failure to induction therapy and was associated with worse prognostic variables. Notably, the simultaneous over-expression of *ID1*, *ID3* and *IGJ* genes was found as an independent prognostic feature that identifies B-ALL patients with poor EFS ($p = 0.001$, Fig. 1b) and OS ($p = 0.001$, Fig. 1c).

Comparative analysis of immunophenotype of normal and leukemic cells

Similar to what has been reported in the literature, comparative immunophenotype analysis between B-ALL cases and their normal counterpart, revealed high heterogeneity in the expression of the different markers suggesting the existence of leukemia associated phenotypes (LAP) [11, 26] in our cohort of patients. Leukemic lymphoblast cells were characterized by over-expression (median fluorescence channel) of CD34 and CD10 immaturity markers, B lineage markers such as CD19 and CD24, the lymphocyte common antigen CD45 and aberrant expression of myeloid lineage associated marker CD66. Additionally, blast cells showed higher light scatter characteristics (Forward-Scatter –FSC– and Side-Scatter –SSC–). Finally, an under-expression of CD38,



CD117, CD9 and TdT was observed B-ALL cells, as compared to normal B-cell precursors (Additional file 1).

Immunophenotype profile defines risk groups and has significant prognosis value

To analyze the prognostic relevance of the 19 EuroFlow immunophenotype markers we used the value of mean fluorescence channel in combination with light scattering parameters (FSC and SSC) in the samples of our 42 patients with adult B-ALL. Unsupervised clustering analysis, based on the immunophenotype, revealed the presence of three clusters of samples (Fig. 2a). The first cluster (green bar) was a group characterized by an immunophenotype signature associated with a better outcome of the disease in which all patients ($n = 14$) achieved CR, only 3 (21%)

presented positive MRD and none of them presented chromosomal rearrangements at diagnosis or died during induction treatment. A second cluster, constituted by 21 samples from patients (red bar) with an immunophenotype profile associated with a poor prognosis, including 4 (19%) with induction treatment failure, 8 (38%) with MRD positive and four who died during the induction phase. It is noteworthy that all patients with $t(9;22) +$ included in our cohort ($n = 5$) were included in this group. A third group of samples (blue bar), represents a small group of six patients with intermediate outcome compared with the two extreme groups. In this group, one patient failed to achieve CR and one more died during induction therapy. Two patients had positive MRD and none of them had $t(9;22) +$.

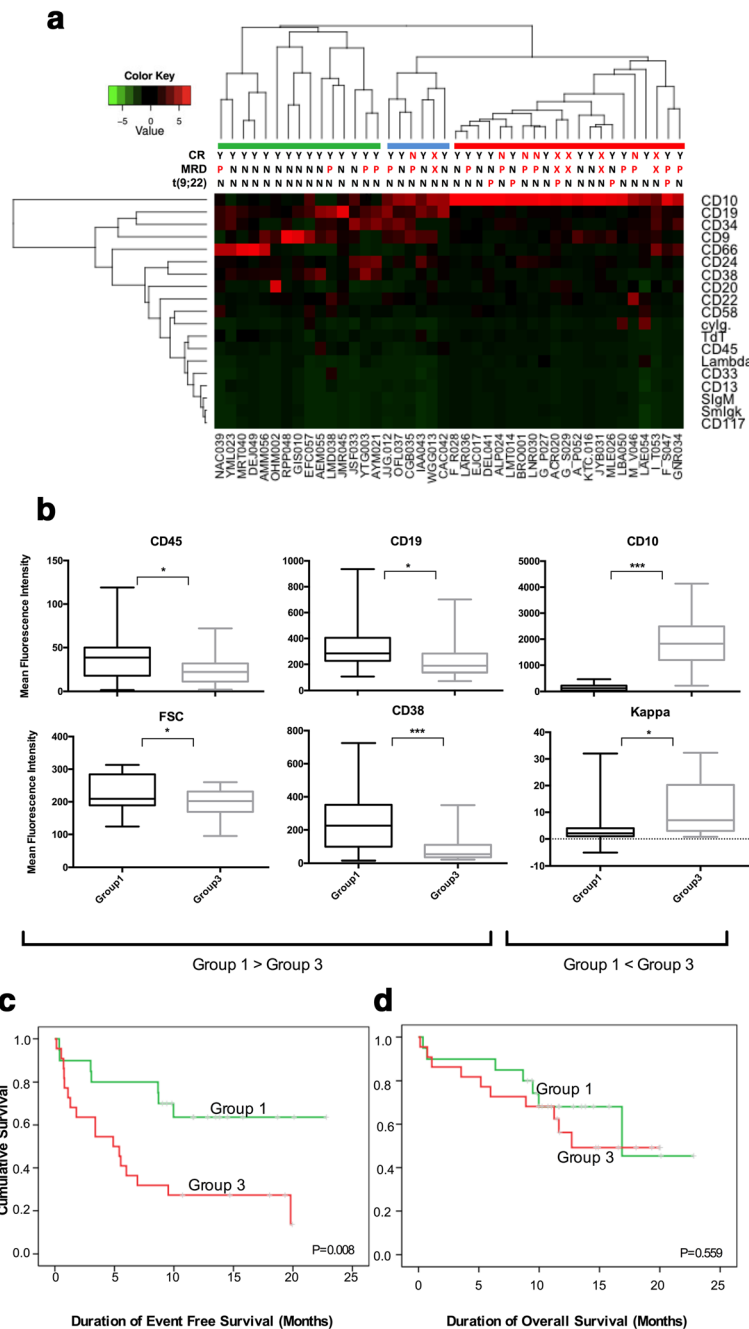


Fig. 2 Determination of groups with differential immunophenotypic markers expression. **a** Unsupervised hierarchical clustering analysis in diagnosis bone marrow of B-LLA patients according to the expression of the evaluated immunophenotypic markers revealed three main groups of patients. *Green bar* (group 1) corresponds to the group with high rates of complete remission, low number of patients with positive MRD and absence of patients with t(9; 22). While *red bar* (group 3) represents the group of patients with the highest percentage of induction failures, positive MRD and all patients with t(9; 22). *Blue bar* (group 2) represents a small group of patients with intermediate outcome compared with the two groups in the extremes. CR: complete remission. MRD: minimal residual disease. **b** Expression levels of immunophenotypic markers in the two groups formed at the ends of the heatmap with different clinical features (groups 1 and 3). CD45, CD19, CD38 and FSC have lower expression in group 3 than in group 1. CD10 and Kappa have different high expression in group 3 compared to group 1. The differences are significant (* $p < 0.05$, *** $p < 0.0001$). Kaplan Meier curves for event-free survival (**c**) ($p = 0.008$) and overall survival (**d**) ($p = 0.559$) in the two prognostic groups identified by immunophenotypic profile. Note that EFS curves showed statistically significant differences, whereas the curves for OS did not

Comparison of clinical characteristics between the groups represented by the green and red bars (Group 1 and Group 3, respectively) showed that patients were significantly different in age (median 25 vs 38 years, respectively). Additionally, WBCC at diagnosis was higher in group 3, although no statistically significant difference was found (median: 8830 vs 12,860 leucocytes/ μ l respectively) (Additional file 2). When we analyze the expression level of immunophenotypic markers, a statistically significant higher level of CD10 expression and reduced expression of CD19, CD38 and CD45 was observed in the poor prognosis group (Group 3) compared with patients with favorable outcome (Group 1) (Fig. 2b). Non-significant increased expression of CD20, CD66 and CD117 markers were also observed in the group with worse outcome (Additional file 3).

Moreover, survival analysis considering the immunophenotypic profile, revealed that over-expression of CD10 and under-expression of CD19, CD45 and CD38 were associated with a poor EFS (Fig. 2c) without impact on OS (Fig. 2d).

Gene expression signature is associated with the immunophenotypical prognostic profile of B-ALL

We then determined whether there was an association between the identified gene expression signature (*ID1*, *ID3*, *IGJ*) with the immunophenotypic expression. We found that patients in group 1 showed significantly lower levels of expression of the 3 genes (*ID1* $p = 0.0432$, *ID3* $p = 0.024$, *IGJ* $p = 0.0399$), when compared with patients belonging to group 3 defined by the expression of poor prognosis immunophenotypic markers (Fig. 3a, b, and c). A correlation analysis was performed to determine if there was an association between these two molecular signatures (gene expression and immunophenotype). As can be seen in Table 1, a significant positive correlation between high expression of *ID1* and lambda and kappa light chains, as well as a significant negative correlations with CD38 expression was found. Overexpression of *ID3* gene correlated with decreased in CD38 expression and greater complexity

of tumor cells (SSC). High expression of *IGJ* also correlated with elevated expression of lambda chains. The simultaneous overexpression of the gene signature *ID1*, *ID3* and *IGJ* was correlated with elevated expression of markers associated with B-cells differentiation and maturation B (CD20, CD10. p -values in boldface, Table 1). It is interesting to note that most of the immunophenotypic markers that correlate with the poor prognosis gene signature are markers that allow the separation into different prognostic groups.

Clustering analysis defined by immunophenotypic markers that correlate with gene signature *ID1*/*ID3*/*IGJ* defines B-ALL patients with poor prognosis

Using an unsupervised hierarchical clustering analysis based on the expression of immunophenotypic markers that are most correlated with our gene expression signature, we observed two groups with differential immunophenotypic profile. The first group (red bar in Fig. 4a) included patients with poor response to treatment, and high rates of positive MRD, presented with elevated expression of CD10, CD20, Lambda and Kappa proteins and increased in cellular complexity, as well as decreased CD38 expression. This group, with poor prognostic features, was closely associated with gene expression status. As can be seen at the bottom of Fig. 4a, this group included most of the patients with at least 2 of the genes overexpressed, suggesting a molecular signature of immaturity and maturational dyssynchrony.

Analysis of the prognosis of these two different groups revealed that the group with immunophenotypic and genetic characteristics of poor prognosis (red bar) had both lower event-free survival (Fig. 4b, red line) and lower overall survival (Fig. 4c) than the group with good prognostic features (green line). As shown in Fig. 4, statistically significant differences for both EFS and OS ($p = 0.001$ and $p = 0.045$) were found between the two groups. However, as noted, the difference was much greater in EFS. Nevertheless, it is important to highlight that OS curves were better discriminated once the

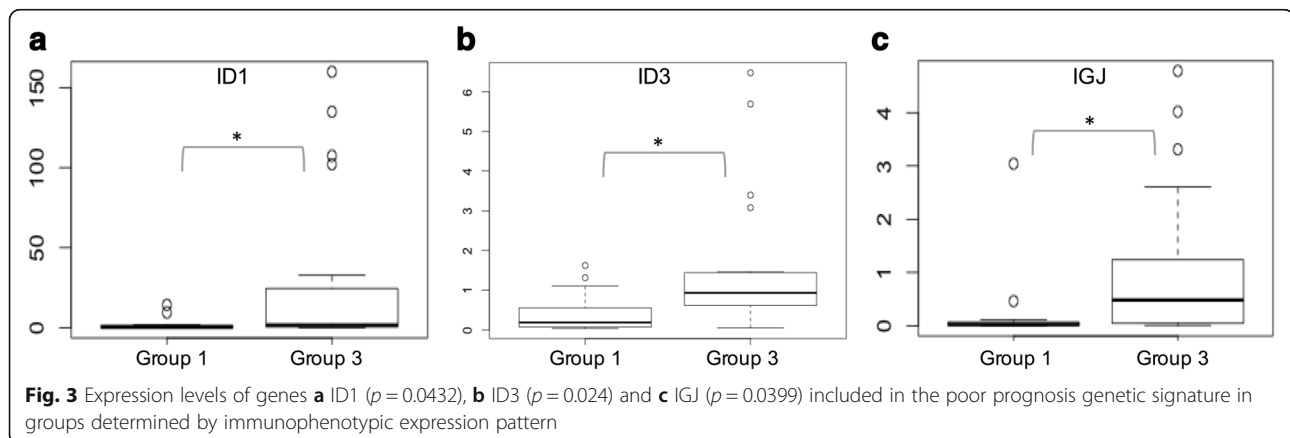


Table 1 Correlation of immunophenotyping markers and gene expression signature ID1/ID3/IGJ

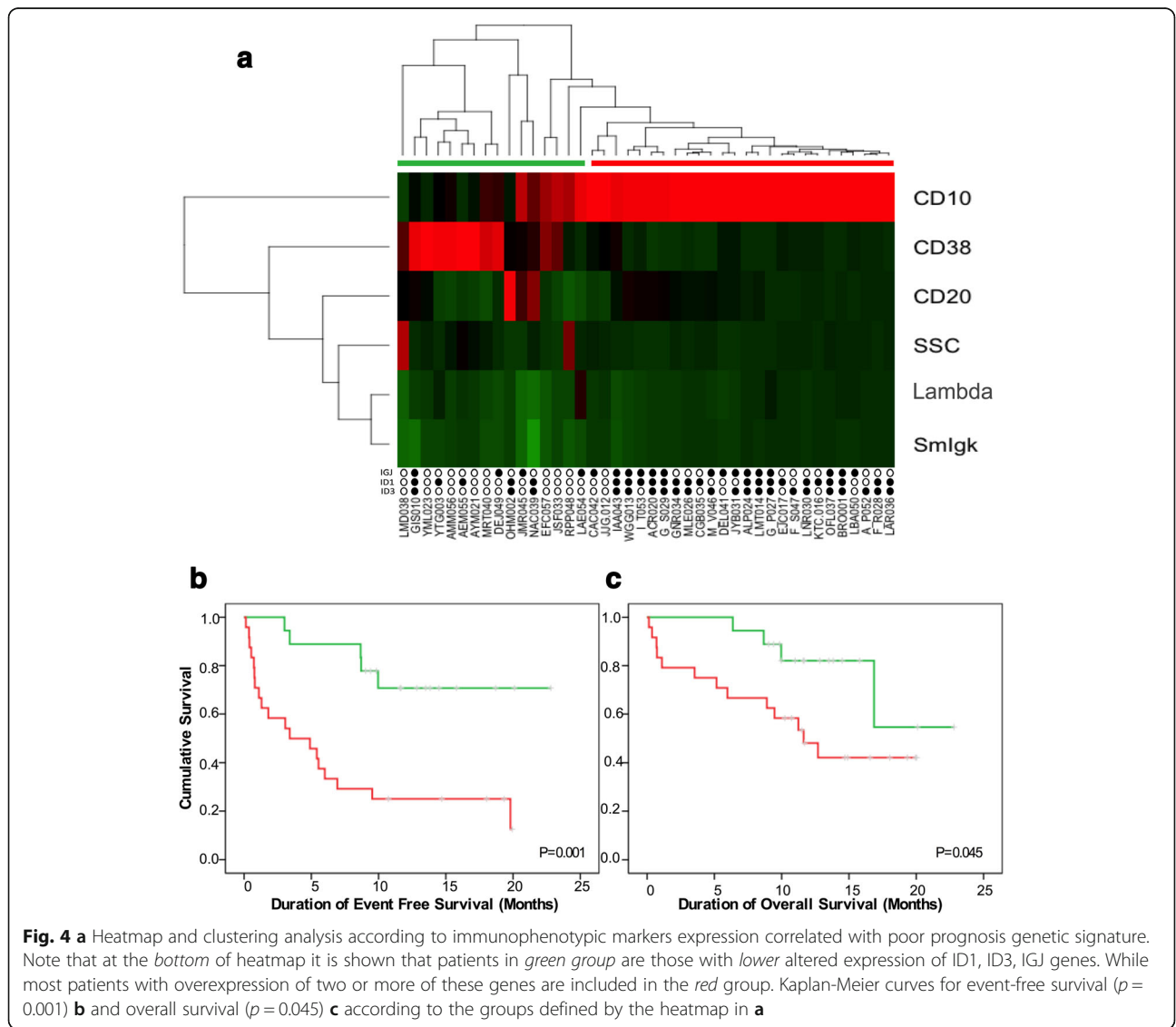
	CD20		CD10		Lambda		CD38		Slgmk		SSC	
	Spearman R	p-value	Spearman R	p-value	Spearman R	p-value	Spearman R	p-value	Spearman R	p-value	Spearman R	p-value
ID3	0.512	0.001	0.454	0.002	0.292	0.06	-0.318	0.04	0.258	0.09	0.343	0.02
ID1	0.298	0.05	0.317	0.04	0.361	0.01	-0.345	0.02	0.358	0.02	0.291	0.06
IGJ	0.337	0.02	0.337	0.01	0.337	0.02	-0.181	0.250	0.178	0.2592	0.121	0.442

immunophenotypic and genetic characteristics were integrated (Fig. 4c) than when calculated only accounting for the immunophenotypic features (Figs. 4c and 2d).

Integration of gene expression signature ID1/ID3/IGJ together with the over-expression of CD10 and CD20 improves stratification of patients in terms of survival

Due to the significant interaction between differentiation and maturation markers (CD10, CD20) with gene

expression signature (Table 1), we then categorized patient molecular characteristics into 3 groups, based on the expression of the gene signature and the maturation markers: 1) Absence of both poor prognosis gene expression signature and absence of CD10 over-expression (GEP-/CD10-); 2) isolated presence of either poor prognosis gene expression signature or CD10 over-expression (GEP+ or CD10+), in the absence of the other; and 3) simultaneous presence of both poor



prognosis gene expression signature and CD10 overexpression (GEP+/CD10+). The GEP-/ CD10- group showed the best OS and EFS while the GEP+/CD10+ had the worst (Fig. 5a and b, respectively). Interestingly, the GEP+ or CD10+ showed intermediate values for both parameters (Fig. 5a and b). Likewise, the same findings were obtained when the analysis was done with CD20 expression (Fig. 5c and d).

Discussion and conclusions

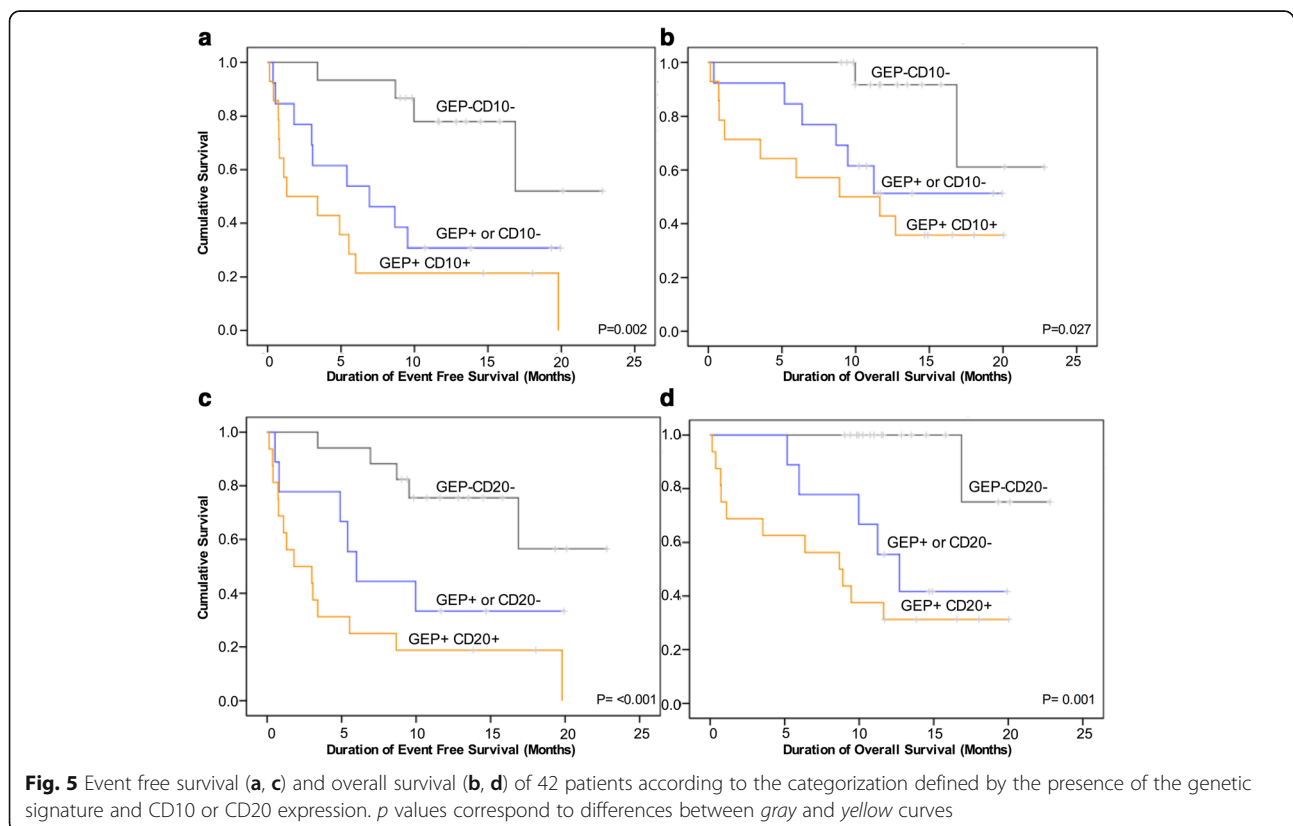
The current multi-variable risk classification strategies are unable to adequately stratify patients into risk groups from the time of diagnosis. Thus, the implementation of a stronger risk stratification tool should help minimize both the risk of relapse of disease and death by toxicity of B-ALL patients. Recently, we identified a signature of three genes (*ID1*, *ID3* and *IGJ*), whose simultaneous over-expression confers a worse prognosis with reduced EFS and OS in B-ALL adult patients [22] (Fig. 1). In this study, we wanted to evaluate the role of this gene signature in combination with EuroFlow immunophenotypic B-ALL panel as a prognostic tool in adult patients with B-ALL.

Although Immunophenotyping has provided relevant information for the diagnosis, classification and monitoring of hematological malignancies, there is scarce information about its use as a prognostic parameter. Initially,

we evaluated the ability of immunophenotype to predict prognosis in B-ALL. We found that the immunophenotype correlates with clinical features and outcome. Individuals who had tumoral lymphoblasts with lower expression of CD45, CD19, CD38 and high expression of CD10, CD20 and kappa are patients with poor prognosis and low EFS. This group of patients had low CR rates, and a high percentage of MRD+. Importantly, this group included all patients with t(9;22). Additionally, they have a higher WBC and median age over 30 years.

The expression of *ID1/ID3/IGJ* was higher in the group with the poor prognosis immunophenotype profile and a statistically significant correlation between the expression of these 3 genes with high expression of CD10 and CD20 was found. Clustering analysis according to the immunophenotypic markers correlated with the gene expression signature, suggesting that patients with both poor prognosis gene expression signature and overexpression of CD10 or CD20, had worse EFS and worse OS than patients with either one of the profiles.

In general, studies assessing the gene expression profiles in B-ALL adult patients are scarce. However, similar to our results, several studies have experimentally addressed the idea that ID (*ID1*, *ID2*, *ID3* and *ID4*) proteins are markers for prognosis and possible therapeutic targets in cancer. They have found that high levels of gene expression, and consequently high levels of ID



proteins, appear to drive certain human tumors. As a result, the elevated ID1 and ID3 expression have been associated with worse prognosis in bladder, breast, brain, colon, rectum, stomach, kidney, pancreas, prostate, ovary and liver tumors and also in acute myeloid leukemia [27–37]. In contrast, few studies have associated the elevated ID1 and ID3 expression with good prognosis in models of breast and brain cancer [38, 39]. In turn, the *IGJ* gene, which was also found over-expressed in our group with poor response to induction therapy, has been reported as part of a poor prognosis signature in B-ALL pediatric patients; interestingly, they had high Hispanic/Latino ethnicity, low 4-years event-free survival and high frequency of positive MRD [40].

Our findings demonstrate for the first time, that in addition to serving as a diagnostic tool, the immunophenotypic panel for B-ALL standardized by EuroFlow, may also have implications for better prognostic classification of patients, especially when used association with the gene expression profile of tumor cells. In this regard, the differential analysis of immunophenotype shows that there is heterogeneity in the expression of different markers evaluated and these are associated with the survival of patients and with the poor prognosis gene expression signature. The presence of CD38 (>30%) is associated with worse prognosis in mature B-cell tumors like B-chronic lymphoid leukemia and in hairy cell leukemia, T and NK lymphoma [41, 42]. However, our work and another report on hematopoietic tumors of B-ALL pediatric Colombian patients [26], describes an under-expression of CD38 in the group of patients with poor prognosis. Similar to our findings, Quijano et al. [26] reported that higher FSC (larger size) was associated with patients with good prognostic. Expression of CD45, protein phosphatases that regulates various cellular functions and signaling pathways, has been reported low or negative in patients with chromosomal aberrations as t(12;21), t(4;11), hyperdiploidy, t(9;22), t(1;19) [43], which is consistent with our finding of reduced expression of this molecule in the group with poor prognostic features.

Regarding immunophenotypic markers associated with poor prognosis gene expression signature, patients with positive gene signature *ID1/ID3/IGJ* and poor outcome of the disease, showed over-expression of CD10 and CD20. It has been previously reported that over-expression of CD10 in patients with B-ALL is associated with the presence of poor prognosis genetic abnormalities as t(9; 22) [43]. Similarly, CD10 has been associated with worse prognosis in patients with melanoma [44] and high-grade malignancy and worse outcome in pancreatic cancer, gastric, colorectal [45], liver [46] and skin tumors [47]. On the other hand, CD20 expression has also been previously evaluated as a predictor of

prognosis in patients with hematological malignancies [48–50]. Similar to our findings, other authors have reported that CD20 expression is associated with low survival [48] and therapies directed against CD20, such as Rituximab, have been implemented in hematological malignancies [49, 50]. However, controversial studies regarding the correlation between the expression of CD20 and prognosis have been published [51–53]. Therefore, it has been suggested that the prognostic significance of CD20 in B-ALL should be explored in other prospective studies with larger sample size.

With regards to the possible mechanism for low treatment response and poor survival of patients with gene expression signature *ID1/ID3/IGJ* and over-expression of CD10 or CD20, the *ID1* and *ID3* genes are transcription factors that inhibit of differentiation and have been reported as important participants in tumorigenic processes, tumor progression, angiogenesis, cellular migration, epithelial-mesenchymal transition and tumor cell self-renewal [23, 24, 54–64]. CD10, in turn, in addition to being a useful marker in cell differentiation to discriminate maturational stages in B-lineage, has also been described as playing a fundamental role in the extracellular microenvironment [44]. Several reports have shown that in various types of cancer, including hematopoietic tumors, CD10 has high tumorigenic activity and can promote tumor progression by regulating gene expression profiles related to cell proliferation, angiogenesis and apoptosis resistance [44, 65, 66]. Furthermore, CD10 promotes tumor stem cells proliferation and can regulate different intracellular signaling pathways that promote survival and adhesion such as PI3K-Akt, PTEN and adhesion through FAK [66]. Additionally, with its peptidase activity, CD10 modulates accumulation of peptides involved in cell proliferation and tumor progression in prostate, lung and pancreatic cancer [66]. In colorectal cancer, CD10 degrades Met-enkephalin, accelerating the tumor growth and liver metastasis [66]. Meanwhile, CD20 is a tetraspanin with ability to form calcium channels and regulate cell cycle progression and activation, differentiation and proliferation of B cells [67].

Overall, despite gene expression levels show high dispersion between patients and differences of *ID1/ID3/IGJ* expression between groups 1 and 3 classified based on immunophenotype is not too big, the high expression of inhibitors of differentiation (*ID1* and *ID3*) together with the overexpression of the immaturity marker CD10 and aberrant expression of CD20, suggest that may there are active processes blocking differentiation, leading to maturation asynchronism that may confer more aggressive tumor characteristics and may lead to the activation of signaling pathways that contribute to resistance to chemotherapeutic treatment. These findings support the fact that there are differences in the prognosis of patients due to an underlying molecular signature

(immunophenotype + gene expression) that could be playing an important role in the pathogenesis of the disease and provides unfavorable characteristics for clinical outcome.

This study has some limitations, which have to be pointed out. Due to this work represents only a small part of the Colombian population with B-ALL the results should be interpreted with caution since it is possible that factors other than difference of the expression level of our gene expression signature and its correlation with phenotypic markers may influence the prognosis and outcome of patients. Additional studies including a larger series of patients are needed to obtain more significant differences and confirm the potential use of the *ID1/ID3/IGJ* as a prognostic marker. Despite the above limitations, this work will be the subject of ongoing studies.

These results support the utility of EuroFlow immunophenotype of B-ALL cells combined with the assessment of *ID1/ID3/IGJ* gene expression as a potential, independent prognostic indicator in B-ALL for both OS and EFS. Importantly, determining the expression of these elements could be used as a powerful yet simple and inexpensive prognostic tool. Thus, further screening and confirmation studies are required to validate our findings and determine whether *ID1/ID3/IGJ* measurements should become routine in B-ALL.

Additional files

Additional file 1: Comparative analysis of mean fluorescence channels for the 19 markers included in the Euroflow panel and the parameters of light scattering (SSC and FSC) of leukemic cells from 42 B-ALL adult patients compared to three normal bone marrow samples. The box incorporates the middle quartiles; the line represents the median value; the whiskers indicate the minimum and maximum values. There is gain in expression of CD45, CD10, CD58, CD22, CD66, CD24, CD34, CD19 and FSC, SSC in B-ALL samples (B-ALL) as compared to normal bone marrow (Normal). There is loss in expression of CD38, CD117, CD9, TdT in B-ALL samples as compared to normal bone marrow. * $P < 0.05$ with respect of pre-pre-B normal cells. (TIFF 910 kb)

Additional file 2: Characteristics of prognostic groups according to EuroFlow immunophenotype. (TIFF 1364 kb)

Additional file 3: Expression levels of immunophenotypic markers in the two groups formed at the extremes of heatmap (group 1 and group 3) with different clinical characteristics. No statistically significant differences were observed in the expression of CD20, CD58, CD66, CD117, CD34, CD33, SmlgM, CD13, Lambda, CD9, TdT, CD22, CD24, SSC. (TIFF 1519 kb)

Abbreviations

B-ALL: B- Acute Lymphoblastic Leukemia; CR: Complete Remission; DFS: Disease Free Survival; FSC: Forward-Scatter; LAP: Leukemia Associated Phenotype; MFI: Mean Fluorescence Intensity; MRD: Minimal Residual Disease; SOP: Standard Operating Procedures; SSC: Side- Scatter; WBC: C White Blood Cell Count; WHO: World Health Organization

Acknowledgements

We are most grateful to the patients who agreed to participate in this study and their families. We also thanks to Dr. Alberto Acosta for his comments to the document. We are particularly grateful to Fundación CEIBA for the financial support of Nataly Cruz-Rodriguez's Doctoral studies.

Funding

Funded by "Programa de Investigación e Innovación en Leucemias Agudas y Crónicas (PILAC), Instituto Nacional de Cancerología, Bogotá, Colombia" funded by the Departamento administrativo de ciencia, tecnología e innovación, Colciencias, Bogota, Colombia. JZ has been partially supported by grants from the National Institute of General Medical Sciences (NIGMS P20GM103501, P30GM114732, U54GM104940-01), and the National Institute on Minority Health and Health Disparities (NIMHD P20MD004817, U54MD008176-01).

Availability of data and materials

The flow cytometry files and datasets used and analyzed during the current study are available from the corresponding author on reasonable request. Accession number of microarray data deposited in Gene Expression Omnibus (GEO) is GSE76349.

Authors' contributions

NCR designed and performed research; analyzed data and wrote the paper. ALC designed the research, wrote the project, analyzed data and wrote the paper. LJE designed the "Programa de Investigación e Innovación en Leucemias Agudas y Crónicas" which funded this Project; selected patients to include in the study; designed the research and analyzed data. LFR collaborate with paper writing and review. PLP selected patients to include in the study and analyzed data. OCL supported the performance of research. AMC supported the performance of flow cytometry experiments. NP supported the performance of flow cytometry experiments. JS selected patients to include in the study and imparted informant consent. MVH selected patients to include in the study and imparted informant consent. JZ designed the research, analyzed data and wrote the paper. SQ designed the research and analyzed data and wrote the paper. All authors read and approved the final manuscript.

Competing interests

None of the authors have any competing interests in the manuscript.

Consent for publication

All the individuals provided written informed consent prior to enrolling in the study, and the study was approved by the Ethics Committees of the participating centers (Instituto Nacional de Cancerología and Hospital Universitario San Ignacio, Bogotá, Colombia).

Ethics approval and consent to participate

This study complied with all applicable requirements of the ethics committee of the participant institutions. The Institutional Review Board and Ethics Committee of Colombian National Cancer Institute approved this study on August 21 2012 (INT-OFI-007445-2012); Ethics and investigation Committee of Hospital Universitario San Ignacio approved the study on May 13 2014 (FM-CIE-8081-14) signed by Dr Surella Acosta and Dr. Mary Bermudez, Ethics Committee presidents of Colombian National Cancer Institute and Hospital Universitario San Ignacio respectively. The Institutional Review Boards and Ethics Committee of both institutions approved the Informed consent forms.

Author details

¹Programa de Investigación e Innovación en Leucemias Agudas y Crónicas (PILAC), Instituto Nacional de Cancerología, Bogotá, Colombia. ²Grupo de Investigación en Biología del Cáncer, Instituto Nacional de Cancerología, Bogotá, Colombia. ³Programa de Doctorado en Ciencias Biológicas, Pontificia Universidad Javeriana, Bogotá, Colombia. ⁴Facultad de Medicina, Universidad Nacional de Colombia, Bogotá, Colombia. ⁵Grupo de Hemato-Oncología, Instituto Nacional de Cancerología, Bogotá, Colombia. ⁶Department of Pediatrics, Pediatric Hematology-Oncology Louisiana State University Health Sciences Center, New Orleans, LA, USA. ⁷Children's Hospital of New Orleans, New Orleans, LA, USA. ⁸Hospital Universitario San Ignacio, Bogotá, Colombia. ⁹Department of Pediatrics, Louisiana State University Health Sciences Center, New Orleans, LA, USA. ¹⁰Stanley S. Scott Cancer Center, Louisiana State University Health Sciences Center, New Orleans, LA, USA. ¹¹Grupo de Inmunobiología y Biología Celular, Departamento de Microbiología, Facultad de Ciencias, Pontificia Universidad Javeriana, Bogotá, Colombia.

Received: 19 January 2017 Accepted: 21 February 2017

Published online: 28 February 2017

References

- Pui C-H, Robison LL, Look AT. Acute lymphoblastic leukaemia. *Lancet* (London, England). 2008;371(9617):1030–43.
- Sayehmiri K, Eshraghian MR, Mohammad K, Alimoghaddam K, Foroushani A, Zeraati H, et al. Prognostic factors of survival time after hematopoietic stem cell transplant in acute lymphoblastic leukemia patients: cox proportional hazard versus accelerated failure time models. *J Exp Clin Cancer Res*. 2008; 27(1):74.
- Bassan R, Hoelzer D. Modern therapy of acute lymphoblastic leukemia. *J Clin Oncol*. 2011;29(5):532–43.
- Gökbuğut N, Hoelzer D, Arnold R, Böhme A, Bartram CR, Freund M, et al. Treatment of Adult ALL according to protocols of the German Multicenter Study Group for Adult ALL (GMALL). *Hematol Oncol Clin North Am*. 2000; 14(6):1307–25. ix.
- Okamoto R, Ogawa S, Nowak D, Kawamata N, Akagi T, Kato M, et al. Genomic profiling of adult acute lymphoblastic leukemia by single nucleotide polymorphism oligonucleotide microarray and comparison to pediatric acute lymphoblastic leukemia. *Haematologica*. 2010;95(9):1481–8.
- Radford JE, Burns CP, Jones MP, Gingrich RD, Kemp JD, Edwards RW, et al. Adult acute lymphoblastic leukemia: results of the Iowa HOP-L protocol. *J Clin Oncol*. 1989;7(1):58–66.
- Koh H, Nakamae H, Hagihara K, Nakane T, Manabe M, Hayashi Y, et al. Factors that contribute to long-term survival in patients with leukemia not in remission at allogeneic hematopoietic cell transplantation. *J Exp Clin Cancer Res*. 2011;30:36.
- Advani AS, Pendergast AM. Bcr-Abl variants: biological and clinical aspects. *Leuk Res*. 2002;26(8):713–20.
- Rowe JM. Prognostic factors in adult acute lymphoblastic leukaemia. *Br J Haematol*. 2010;150(4):389–405.
- Inaba H, Greaves M, Mullighan CG. Acute lymphoblastic leukaemia. *Lancet*. 2013;381(9881):1943–55.
- Seegmiller AC, Kroft SH, Karandikar NJ, McKenna RW. Characterization of immunophenotypic aberrancies in 200 cases of B acute lymphoblastic leukemia. *Am J Clin Pathol*. 2009;132(6):940–9.
- van Dongen JJM, Lhermitte L, Böttcher S, Almeida J, van der Velden VHJ, Flores-Montero J, et al. EuroFlow antibody panels for standardized n-dimensional flow cytometric immunophenotyping of normal, reactive and malignant leukocytes. *Leukemia*. 2012;26(9):1908–75.
- Kalina T, Flores-Montero J, van der Velden VHJ, Martin-Ayuso M, Böttcher S, Ritgen M, et al. EuroFlow standardization of flow cytometer instrument settings and immunophenotyping protocols. *Leukemia*. 2012;26(9):1986–2010.
- Bacher U, Kohlmann A, Haferlach T. Current status of gene expression profiling in the diagnosis and management of acute leukaemia. *Br J Haematol*. 2009;145(5):555–68.
- Olsson L, Johansson B. Ikaros and leukaemia. *Br J Haematol*. 2015;169(4):479–91.
- Mullighan CG, Goorha S, Radtke I, Miller CB, Coustan-Smith E, Dalton JD, et al. Genome-wide analysis of genetic alterations in acute lymphoblastic leukaemia. *Nature*. 2007;446(7137):758–64.
- Mullighan CG, Miller CB, Radtke I, Phillips LA, Dalton J, Ma J, et al. BCR-ABL1 lymphoblastic leukaemia is characterized by the deletion of Ikaros. *Nature*. 2008;453(7191):110–4.
- Mullighan CG, Zhang J, Harvey RC, Collins-Underwood JR, Schulman BA, Phillips LA, et al. JAK mutations in high-risk childhood acute lymphoblastic leukemia. *Proc Natl Acad Sci U S A*. 2009;106(23):9414–8.
- Russell LJ, Capasso M, Vater I, Akasaka T, Bernard OA, Calasanz MJ, et al. Deregulated expression of cytokine receptor gene, CRLF2, is involved in lymphoid transformation in B-cell precursor acute lymphoblastic leukemia. *Blood*. 2009;114(13):2688–98.
- Mullighan CG, Zhang J, Kasper LH, Lerach S, Payne-Turner D, Phillips LA, et al. CREBBP mutations in relapsed acute lymphoblastic leukaemia. *Nature*. 2011;471(7337):235–9.
- Rosales-Aviña JA, Torres-Flores J, Aguilar-Lemarroy A, Gurrola-Díaz C, Hernández-Flores G, Ortiz-Lazareno PC, et al. MEIS1, PREP1, and PBX4 Are Differentially Expressed in Acute Lymphoblastic Leukemia: Association of MEIS1 Expression with Higher Proliferation and Chemotherapy Resistance. *J Exp Clin Cancer Res*. 2011;30(1):112.
- Cruz-Rodriguez N, Combata AL, Enciso LJ, Quijano SM, Pinzon PL, Lozano OC, et al. High expression of ID family and IGF1 genes signature as predictor of low induction treatment response and worst survival in adult Hispanic patients with B-acute lymphoblastic leukemia. *J Exp Clin Cancer Res*. 2016; 35:64.
- Lasorella A, Benezra R, Iavarone A. The ID proteins: master regulators of cancer stem cells and tumour aggressiveness. *Nat Rev Cancer*. 2014;14(2):77–91.
- Lyden D, Young AZ, Zagzag D, Yan W, Gerald W, O'Reilly R, et al. Id1 and Id3 are required for neurogenesis, angiogenesis and vascularization of tumour xenografts. *Nature*. 1999;401(6754):670–7.
- van Dongen JJM, Orfao A. EuroFlow: resetting leukemia and lymphoma immunophenotyping. Basis for companion diagnostics and personalized medicine. *Leukemia*. 2012;26(9):1899–907.
- Quijano SM, Torres MM, Vázquez LE, Cuéllar GE, Romero ML, Martín EL, et al. Correlation of the t(9;22), t(12;21), and DNA hyperdiploid content with immunophenotype and proliferative rate of leukemic B-cells of pediatric patients with B-cell acute lymphoblastic leukemia. *Biomedica*. 2013;33(3):468–86.
- Ding Y, Wang G, Ling MT, Wong YC, Li X, Na Y, et al. Significance of Id-1 up-regulation and its association with EGFR in bladder cancer cell invasion. *Int J Oncol*. 2006;28(4):847–54.
- Minn AJ, Gupta GP, Siegel PM, Bos PD, Shu W, Giri DD, et al. Genes that mediate breast cancer metastasis to lung. *Nature*. 2005;436(7050):518–24.
- Niola F, Zhao X, Singh D, Sullivan R, Castano A, Verrico A, et al. Mesenchymal high-grade glioma is maintained by the ID-RAP1 axis. *J Clin Invest*. 2013;123(1):405–17.
- Wilson JW, Deed RW, Inoue T, Balzi M, Becciolini A, Faraoni P, et al. Expression of Id helix-loop-helix proteins in colorectal adenocarcinoma correlates with p53 expression and mitotic index. *Cancer Res*. 2001;61(24): 8803–10.
- Yang H-Y, Liu H-L, Liu G-Y, Zhu H, Meng Q-W, Qu L-D, et al. Expression and prognostic values of Id-1 and Id-3 in gastric adenocarcinoma. *J Surg Res*. 2011;167(2):258–66.
- Li X, Zhang Z, Xin D, Chua CW, Wong YC, Leung SCL, et al. Prognostic significance of Id-1 and its association with EGFR in renal cell cancer. *Histopathology*. 2007;50(4):484–90.
- Tobin NP, Sims AH, Lundgren KL, Lehn S, Landberg G. Cyclin D1, Id1 and EMT in breast cancer. *BMC Cancer*. 2011;11:417.
- Lee KT, Lee YW, Lee JK, Choi SH, Rhee JC, Paik SS, et al. Overexpression of Id-1 is significantly associated with tumour angiogenesis in human pancreas cancers. *Br J Cancer*. 2004;90(6):1198–203.
- Sharma P, Patel D, Chaudhary J. Id1 and Id3 expression is associated with increasing grade of prostate cancer: Id3 preferentially regulates CDKN1B. *Cancer Med*. 2012;1(2):187–97.
- Schindl M, Schoppmann SF, Ströbel T, Heinzl H, Leisser C, Horvat R, et al. Level of Id-1 protein expression correlates with poor differentiation, enhanced malignant potential, and more aggressive clinical behavior of epithelial ovarian tumors. *Clin Cancer Res*. 2003;9(2):779–85.
- Ding R, Han S, Lu Y, Guo C, Xie H, Zhang N, et al. Overexpressed Id-1 is associated with patient prognosis and HbX expression in hepatitis B virus-related hepatocellular carcinoma. *Cancer Biol Ther*. 2010;10(3):299–307.
- Stighall M, Manetopoulos C, Axelson H, Landberg G. High ID2 protein expression correlates with a favourable prognosis in patients with primary breast cancer and reduces cellular invasiveness of breast cancer cells. *Int J Cancer*. 2005;115(3):403–11.
- Barrett LE, Granot Z, Coker C, Iavarone A, Hambardzumyan D, Holland EC, et al. Self-renewal does not predict tumor growth potential in mouse models of high-grade glioma. *Cancer Cell*. 2012;21(1):11–24.
- Harvey RC, Mullighan CG, Wang X, Dobbin KK, Davidson GS, Bedrick EJ, et al. Identification of novel cluster groups in pediatric high-risk B-precursor acute lymphoblastic leukemia with gene expression profiling: correlation with genome-wide DNA copy number alterations, clinical characteristics, and outcome. *Blood*. 2010;116(23):4874–84.
- Sagatys EM, Zhang L. Clinical and laboratory prognostic indicators in chronic lymphocytic leukemia. *Cancer Control*. 2012;19(1):18–25.
- Poret N, Fu Q, Guihard S, Cheok M, Miller K, Zeng G, et al. CD38 in Hairy Cell Leukemia Is a Marker of Poor Prognosis and a New Target for Therapy. *Cancer Res*. 2015;75(18):3902–11.
- He R-J, Yu Z-H, Zhang R-Y, Zhang Z-Y. Protein tyrosine phosphatases as potential therapeutic targets. *Acta Pharmacol Sin*. 2014;35(10):1227–46.
- Oba J, Nakahara T, Hashimoto-Hachiya A, Liu M, Abe T, Hagihara A, et al. CD10-Equipped Melanoma Cells Acquire Highly Potent Tumorigenic Activity: a Plausible Explanation of Their Significance for a Poor Prognosis. *Plos One*. 2016;11(2):e0149285.

45. Deschamps L, Handra-Luca A, O'Toole D, Sauvanet A, Ruzsiewicz P, Belghiti J, et al. CD10 expression in pancreatic endocrine tumors: correlation with prognostic factors and survival. *Hum Pathol.* 2006;37(7):802–8.
46. Fujita S, Taniguchi H, Yao T, Shimoda T, Ueno H, Hirai T, et al. Multi-institutional study of risk factors of liver metastasis from colorectal cancer: correlation with CD10 expression. *Int J Colorectal Dis.* 2010;25(6):681–6.
47. Piattelli A, Fioroni M, Iezzi G, Perrotti V, Stellini E, Piattelli M, et al. CD10 expression in stromal cells of oral cavity squamous cell carcinoma: a clinic and pathologic correlation. *Oral Dis.* 2006;12(3):301–4.
48. Qin Y, Kang SY, He XH, Zhou SY, Liu P, Yang JL, et al. Clinical features and prognosis of CD20-positive classical Hodgkin lymphoma. *Zhonghua Yi Xue Za Zhi.* 2016;96(28):2224–8.
49. Safdari Y, Ahmadzadeh V, Farajnia S. CD20-targeting in B-cell malignancies: novel prospects for antibodies and combination therapies. *Invest New Drugs.* 2016;34(4):497–512.
50. Freeman CL, Dixon M, Houghton R, Kreuzer K-A, Fingerle-Rowson G, Herling M, et al. Role of CD20 expression and other pre-treatment risk factors in the development of infusion-related reactions in patients with CLL treated with obinutuzumab. *Leukemia.* 2016;30(8):1763–6.
51. Chang H, Jiang A, Brandwein J. Prognostic relevance of CD20 in adult B-cell precursor acute lymphoblastic leukemia. *Haematologica.* 2010;95(6):1040–2. author reply 1042.
52. Choi CH, Park YH, Lim JH, Choi SJ, Kim L, Park IS, et al. Prognostic Implication of Semi-quantitative Immunohistochemical Assessment of CD20 Expression in Diffuse Large B-Cell Lymphoma. *J Pathol Transl Med.* 2016;50(2):96–103.
53. Mannelli F, Gianfaldoni G, Intermesoli T, Cattaneo C, Borlenghi E, Corleazzo S, et al. CD20 expression has no prognostic role in Philadelphia-negative B-precursor acute lymphoblastic leukemia: new insights from the molecular study of minimal residual disease. *Haematologica.* 2012;97(4):568–71.
54. Ruzinova MB, Schoer RA, Gerald W, Egan JE, Pandolfi PP, Rafii S, et al. Effect of angiogenesis inhibition by Id loss and the contribution of bone-marrow-derived endothelial cells in spontaneous murine tumors. *Cancer Cell.* 2003;4(4):277–89.
55. Nieborowska-Skorska M, Hoser G, Rink L, Malecki M, Kossev P, Wasik MA, et al. Id1 transcription inhibitor-matrix metalloproteinase 9 axis enhances invasiveness of the breakpoint cluster region/abelson tyrosine kinase-transformed leukemia cells. *Cancer Res.* 2006;66(8):4108–16.
56. Coma S, Amin DN, Shimizu A, Lasorella A, Iavarone A, Klagsbrun M. Id2 Promotes Tumor Cell Migration and Invasion through Transcriptional Repression of Semaphorin 3 F. *Cancer Res.* 2010;70(9):3823–32.
57. Cubillo E, Diaz-Lopez A, Cuevas EP, Moreno-Bueno G, Peinado H, Montes A, et al. E47 and Id1 interplay in epithelial-mesenchymal transition. *Plos One.* 2013;8(3):e59948.
58. Di K, Wong YC, Wang X. Id-1 promotes TGF- β 1-induced cell motility through HSP27 activation and disassembly of adherens junction in prostate epithelial cells. *Exp Cell Res.* 2007;313(19):3983–99.
59. Romero-Lanman EE, Pavlovic S, Amlani B, Chin Y, Benezra R. Id1 Maintains Embryonic Stem Cell Self-Renewal by Up-Regulation of Nanog and Repression of Brachyury Expression. *Stem Cells Dev.* 2012;21(3):384–93.
60. Bai G, Sheng N, Xie Z, Bian W, Yokota Y, Benezra R, et al. Id Sustains Hes1 Expression to Inhibit Precocious Neurogenesis by Releasing Negative Autoregulation of Hes1. *Dev Cell.* 2007;13(2):283–97.
61. Niola F, Zhao X, Singh D, Castano A, Sullivan R, Lauria M, et al. Id proteins synchronize stemness and anchorage to the niche of neural stem cells. *Nat Cell Biol.* 2012;14(5):477–87.
62. O'Brien CA, Kreso A, Ryan P, Hermans KG, Gibson L, Wang Y, et al. ID1 and ID3 regulate the self-renewal capacity of human colon cancer-initiating cells through p21. *Cancer Cell.* 2012;21(6):777–92.
63. Anido J, Sáez-Borderías A, González-Juncà A, Rodón L, Folch G, Carmona MA, et al. TGF- β Receptor Inhibitors Target the CD44^{high}/Id1^{high} Glioma-Initiating Cell Population in Human Glioblastoma. *Cancer Cell.* 2010;18(6):655–68.
64. Ying QL, Nichols J, Chambers I, Smith A. BMP induction of Id proteins suppresses differentiation and sustains embryonic stem cell self-renewal in collaboration with STAT3. *Cell.* 2003;115(3):281–92.
65. Shipp MA, Look AT. Hematopoietic differentiation antigens that are membrane-associated enzymes: cutting is the key! *Blood.* 1993;82(4):1052–70.
66. Maguer-Satta V, Besançon R, Bachelard-Cascales E. Concise review: neutral endopeptidase (CD10): a multifaceted environment actor in stem cells, physiological mechanisms, and cancer. *Stem Cells.* 2011;29(3):389–96.
67. Vega GG, Franco-Cea LA, Huerta-Yepez S, Mayani H, Morrison SL, Bonavida B, et al. Overcoming rituximab drug-resistance by the genetically engineered anti-CD20-hlFN- α fusion protein: direct cytotoxicity and synergy with chemotherapy. *Int J Oncol.* 2015;47(5):1735–48.

Submit your next manuscript to BioMed Central and we will help you at every step:

- We accept pre-submission inquiries
- Our selector tool helps you to find the most relevant journal
- We provide round the clock customer support
- Convenient online submission
- Thorough peer review
- Inclusion in PubMed and all major indexing services
- Maximum visibility for your research

Submit your manuscript at
www.biomedcentral.com/submit

