

# SOX17 Is a Critical Specifier of Human Primordial Germ Cell Fate

Naoko Irie,<sup>1,2,3,5</sup> Leehee Weinberger,<sup>4,5</sup> Walfred W.C. Tang,<sup>1,2,3,5</sup> Toshihiro Kobayashi,<sup>1,2,3</sup> Sergey Viukov,<sup>4</sup> Yair S. Manor,<sup>4</sup> Sabine Dietmann,<sup>3</sup> Jacob H. Hanna,<sup>4,6,\*</sup> and M. Azim Surani<sup>1,2,3,6,\*</sup>

<sup>1</sup>Wellcome Trust Cancer Research UK Gurdon Institute, Tennis Court Road, University of Cambridge, Cambridge CB2 1QN, UK

<sup>2</sup>Department of Physiology, Development and Neuroscience, Downing Street, University of Cambridge, Cambridge CB2 3EG, UK

<sup>3</sup>Wellcome Trust-Medical Research Council Stem Cell Institute, Tennis Court Road, University of Cambridge, Cambridge CB2 3EG, UK

<sup>4</sup>The Department of Molecular Genetics, Weizmann Institute of Science, Rehovot 76100, Israel

<sup>5</sup>Co-first author

<sup>6</sup>Co-senior author

\*Correspondence: [jacob.hanna@weizmann.ac.il](mailto:jacob.hanna@weizmann.ac.il) (J.H.H.), [a.surani@gurdon.cam.ac.uk](mailto:a.surani@gurdon.cam.ac.uk) (M.A.S.)

<http://dx.doi.org/10.1016/j.cell.2014.12.013>

This is an open access article under the CC BY license (<http://creativecommons.org/licenses/by/3.0/>).

## SUMMARY

Specification of primordial germ cells (PGCs) marks the beginning of the totipotent state. However, without a tractable experimental model, the mechanism of human PGC (hPGC) specification remains unclear. Here, we demonstrate specification of hPGC-like cells (hPGCLCs) from germline competent pluripotent stem cells. The characteristics of hPGCLCs are consistent with the embryonic hPGCs and a germline seminoma that share a CD38 cell-surface marker, which collectively defines likely progression of the early human germline. Remarkably, SOX17 is the key regulator of hPGC-like fate, whereas BLIMP1 represses endodermal and other somatic genes during specification of hPGCLCs. Notable mechanistic differences between mouse and human PGC specification could be attributed to their divergent embryonic development and pluripotent states, which might affect other early cell-fate decisions. We have established a foundation for future studies on resetting of the epigenome in hPGCLCs and hPGCs for totipotency and the transmission of genetic and epigenetic information.

## INTRODUCTION

Primordial germ cells (PGCs) are the precursors of sperm and eggs, which generate the totipotent state. The genetic basis of mammalian PGC specification was first established in mice (Saitou et al., 2002; Ohinata et al., 2005; Hayashi et al., 2007), which are specified from postimplantation epiblast cells on embryonic day (E)6.25 in response to bone morphogenetic protein 4 (BMP4) (Lawson et al., 1999). Subsequently, ~35 founder PGCs are detected at E7.25. Similar studies on human PGCs (hPGCs) would require E9–E16 embryos, which is not practicable. However, embryonic hPGCs at approximately week 5 to 10 of development, which correspond to mouse PGCs at E10.5–E13.5, can in principle be examined (Leitch et al., 2013). These cells retain charac-

teristic of PGCs while they undergo resetting of the epigenome and global DNA demethylation (Hackett et al., 2012).

In mice, BMP4 induces expression of BLIMP1 (encoded by *Prdm1*) and PRDM14 in the postimplantation epiblast at E6.25; together with AP2 $\gamma$  (encoded by *Tfap2c*), a direct target of BLIMP1, they induce PGC fate (Magnúsdóttir et al., 2013; Nakaki et al., 2013). The tripartite genetic network acts combinatorially to repress somatic genes, induce expression of PGC genes, such as *Nanos3*, reinduce pluripotency genes, and initiate the epigenetic program (Hackett et al., 2013; Magnúsdóttir and Surani, 2014). PGC-like cells (PGCLCs) can also be induced in vitro from naive pluripotent mouse embryonic stem cells (mESCs) after they acquire competence for germ cell fate after ~48 hr culture in basic fibroblast growth factor (bFGF) and Activin A (Hayashi et al., 2011). These competent cells acquire PGC-like fate in response to either BMP4 signal or directly to *Blimp1*, *Prdm14*, and *Tfap2c*, which is similar to PGCs in vivo (Magnúsdóttir et al., 2013; Nakaki et al., 2013).

Human PGCLCs (hPGCLCs) have been generated at a low frequency by spontaneous differentiation of human ESCs (hESC) in vitro (Gkoutela et al., 2013; Kee et al., 2009), but systematic studies to characterize and identify the key regulators of hPGCs remain to be elucidated. Because there are evident differences between the regulation of mouse and human pluripotent ESCs (Hackett and Surani, 2014; Nichols and Smith, 2009) and during their early postimplantation development (de Fellici, 2013; De Miguel et al., 2010; Irie et al., 2014), this might affect the mechanism and the role of the key regulators of hPGCLC specification (Imamura et al., 2014; Pera, 2013). Once the mechanism of hPGCLC specification is established, it could provide insights on the progression of the early human germline with reference to embryonic hPGCs and seminomas that originate from human germ cells in vivo and retain key characteristics of the lineage (Looijenga et al., 2014).

We have developed a robust approach for hPGCLC specification from germ cell competent hESCs/hiPSCs (Gafni et al., 2013). We show that SOX17, a critical transcription factor for endoderm lineages, is the earliest marker of hPGCLCs and is in fact the key regulator of hPGCLC fate, which is not the case in mice (Hara et al., 2009; Kanai-Azuma et al., 2002). BLIMP1 is downstream of SOX17, and it represses endodermal and other somatic genes

during hPGCLC specification. Comparisons among hPGCLCs, embryonic hPGCs, and a seminoma indicate likely progression of the early human germline. These cells also exhibit CD38 cell surface marker, which is shared by cells with germ cell characteristics. We anticipate that genome editing approaches with our robust in vitro model for hPGCLC specification, combined with patient-specific human-induced pluripotent stem cells (hiPSCs), will lead to major advances in human germ cell biology, including on the unique germline-specific epigenetic program with potential consequences for subsequent generations.

## RESULTS

### Generation of hPGCLCs from Embryonic Stem Cells

First, we generated three independent hESC lines (WIS2 and LIS1 male hESC and WIBR3 female hESC line) (Gafni et al., 2013) with a NANOS3-mCherry knockin reporter (Figure S1A available online), a highly conserved PGC-specific gene (Gkoutela et al., 2013; Julaton and Reijo Pera, 2011). These hESCs maintained in bFGF and responded to BMP2/BMP4 with ~0%–5% NANOS3-mCherry positive putative hPGCLCs at day 4 (see Figure 7A). Like hESC, mouse epiblast stem cells (mEpiSC) also respond poorly to specification of PGCLCs (Hayashi and Surani, 2009). In contrast, epiblast-like cells (EpiLCs) derived from naive mESCs have a significant potential for germ cell fate (Hayashi et al., 2011). However, the approach used for mouse ESCs did not confer competence for germline fate on hESCs.

Next, we tested hESC-NANOS3-mCherry cells that were maintained in four-inhibitor-containing medium with LIF, bFGF, and TGF $\beta$  (adopted and modified from NHSM conditions; see Experimental Procedures), henceforth called “4i” medium, which endows the cells with a distinct pluripotent state (Gafni et al., 2013). These hESCs were then cultured for 2 days in bFGF, TGF $\beta$ , and 1% KSR medium, and thereafter, 2,000–4,000 cells were cultured in low-attachment well in the presence of BMP2 or BMP4, LIF, stem cell factor (SCF), epidermal growth factor (EGF), and Rho-kinase (ROCK) inhibitor to induce hPGCLCs (Hayashi et al., 2011; Watanabe et al., 2007) (Figure 1A). These cells aggregated to form embryoid bodies (henceforth called embryoids) and responded within 3 days with significant expression of NANOS3-mCherry and tissue-nonspecific alkaline phosphatase (TNAP), a PGC and pluripotency marker in humans and mice (Figure 1B). The intensity of the NANOS3-mCherry reporter increased progressively until day 4–5, resulting in ~27% of NANOS3/TNAP double-positive putative hPGCLCs (Figures 1B and S1B). Similar to mice, hPGCLCs do not proliferate significantly after 5 days under these conditions (Hayashi et al., 2011). The response was highly reproducible in three independent male and female NANOS3-mCherry hESC lines. Both BMP2 and/or BMP4 (with LIF, SCF, and EGF) were effective in inducing hPGCLC (Figure S1C) in a dose-dependent manner in the range of 50–500 ng/ml (Figures S1D and S1E).

The NANOS3/TNAP double-positive putative hPGCLCs also expressed key PGC genes, including *NANOS3*, *BLIMP1*, *TFAP2C*, *STELLA*, *TNAP*, *KIT*, *OCT4*, and *NANOG*, as well as *PRDM14*, albeit with reduced levels compared to hESC (Figure 1C). Remarkably, *SOX17* was significantly upregulated,

whereas *SOX2* was downregulated in the putative hPGCLCs that reflects their expression in embryonic hPGCs and seminomas (de Jong et al., 2008; see Figure 2), which is not the case in mouse PGCs. Immunofluorescence confirmed that NANOS3-mCherry expression coincided with *OCT4*, *NANOG*, and *TFAP2C* in day 4 embryoids (Figures 1D and S1F), as did *OCT4* with *BLIMP1* (Figure S1F). This suggests that the NANOS3-mCherry-positive cells are very likely nascent germ cells.

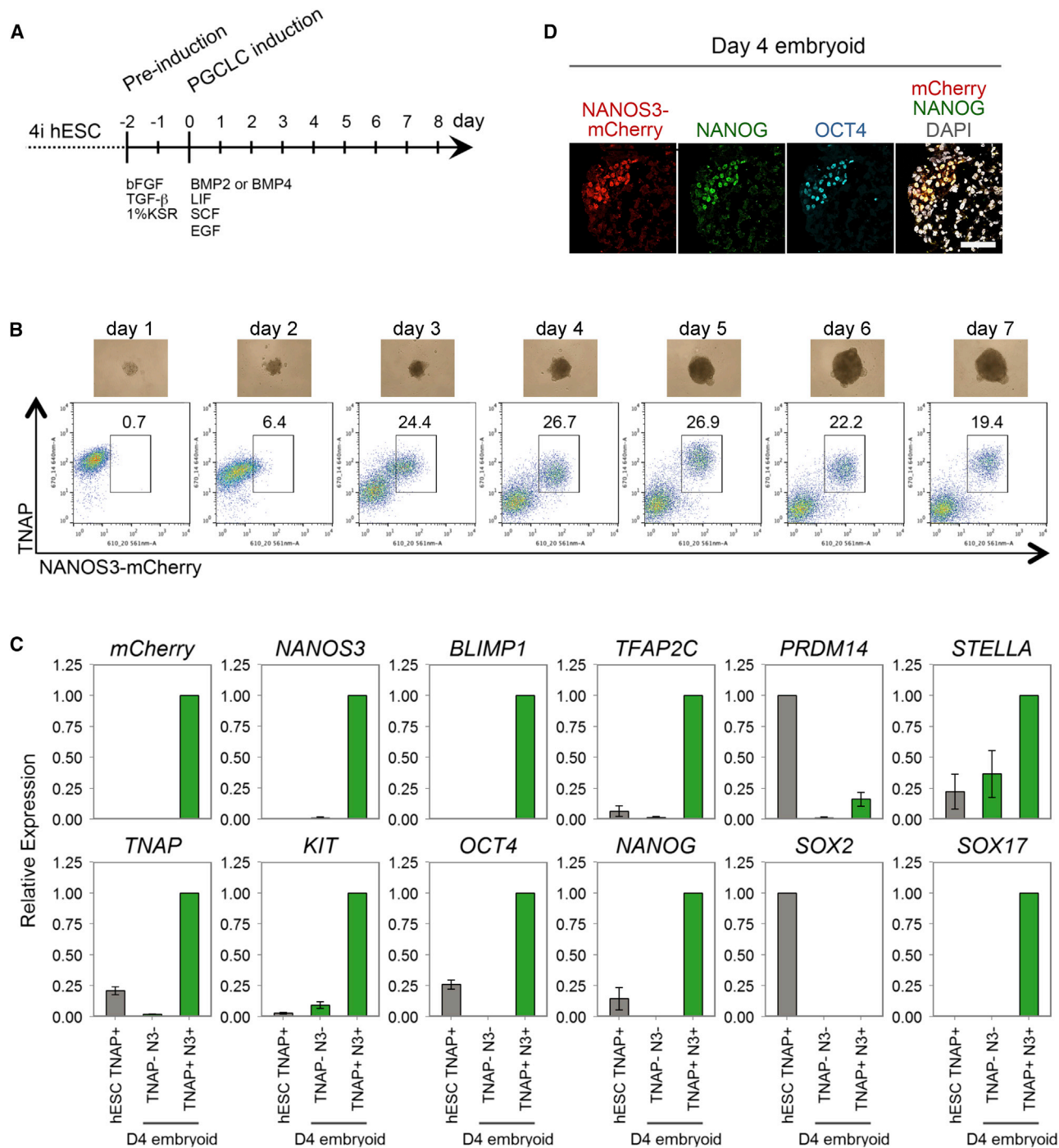
### RNA-Seq Analysis of hPGCLCs: Comparison with hPGCs and Seminoma

We carried out RNA sequencing (RNA-seq) on NANOS3/TNAP double-positive cells from day 4 embryoids and compared them with the gonadal hPGCs from week 7 male human embryos (Carnegie stage 18/19), which are equivalent to mouse ~E12.5–E13.5 PGCs (Leitch et al., 2013). These hPGCs retain key characteristics of earlier hPGCs but, consistent with their more advanced state, expresses later germ cell markers such as *VASA* and *DAZL*. We also included TCam-2, a human seminoma that originates from the germline in vivo (Looijenga et al., 2014).

Unsupervised hierarchical clustering of global gene expression showed that the hPGCLCs clustered with hPGCs and TCam-2, whereas 4i hESCs and preinduced cells (4i hESCs treated with bFGF and TGF $\beta$  for 2 days) clustered together in another branch away from gonadal somatic cells (soma) (Figure 2A). Consistently, hPGCs were globally more related to hPGCLCs (Pearson correlation coefficient [ $r$ ] = 0.85) and TCam-2 ( $r$  = 0.818) than to 4i hESCs ( $r$  = 0.799) and preinduced cells ( $r$  = 0.773) (Figure S2A).

A heat map of mRNA expression revealed that hPGCLCs and gonadal hPGCs shared expression of early PGCs (*BLIMP1*, *TFAP2C*, *DND1*, *NANOS3*, *UTF1*, *ITGB3*, and *KIT*) and pluripotency genes (*TNAP*, *OCT4*, *NANOG*, *PRDM14*, and *LIN28A*) but with a notable lack of *SOX2* expression (Figure 2C). Early mesoderm marker *T* was detected in hPGCLCs (Figure 2C), as in mouse early PGCs (Aramaki et al., 2013). Interestingly, expression of two endodermal genes, *SOX17* and *GATA4*, was detected in hPGCLCs, embryonic hPGCs, and TCam-2, which are absent in the mouse germline. Notably, we identified *CD38* expression in hPGCLCs/hPGCs and TCam-2, but not in hESCs or soma (Figures 2C and see also Figures 3A–3C). Overall, hPGCLCs indeed have germ cell characteristics consistent with hPGCs. Late germ cell markers, however, including *DAZL*, *VASA*, and *MAEL*, were only detected in hPGCs (Figure 2C). TCam-2 gene expression was similar to hPGCLCs, albeit with lower expression levels of *NANOS3*, *ITGB3*, and *T* and upregulation of a few somatic genes, e.g., *HAND1* and *RUNX1*. Immunofluorescence analysis validated the expression of *BLIMP1*, *TFAP2C*, and *OCT4* in hPGCLCs/hPGCs and TCam-2 (Figures 2E–2H). Interestingly, *PRDM14* showed nuclear localization in the majority of hPGCLCs but was predominantly enriched in the cytoplasm of hPGCs (Figure 2F). Importantly, although *SOX2* was undetectable, there was significant expression of *SOX17* in hPGCLCs, hPGCs, and TCam-2 (Figures 2G and 2H).

Given the similarities of hPGCLCs, hPGCs, and TCam-2, a three-way Venn diagram was plotted to investigate their relationships (Figure 2D). Out of 972 highly upregulated genes



**Figure 1. Specification of hPGCLCs from Human Embryonic Stem Cells**

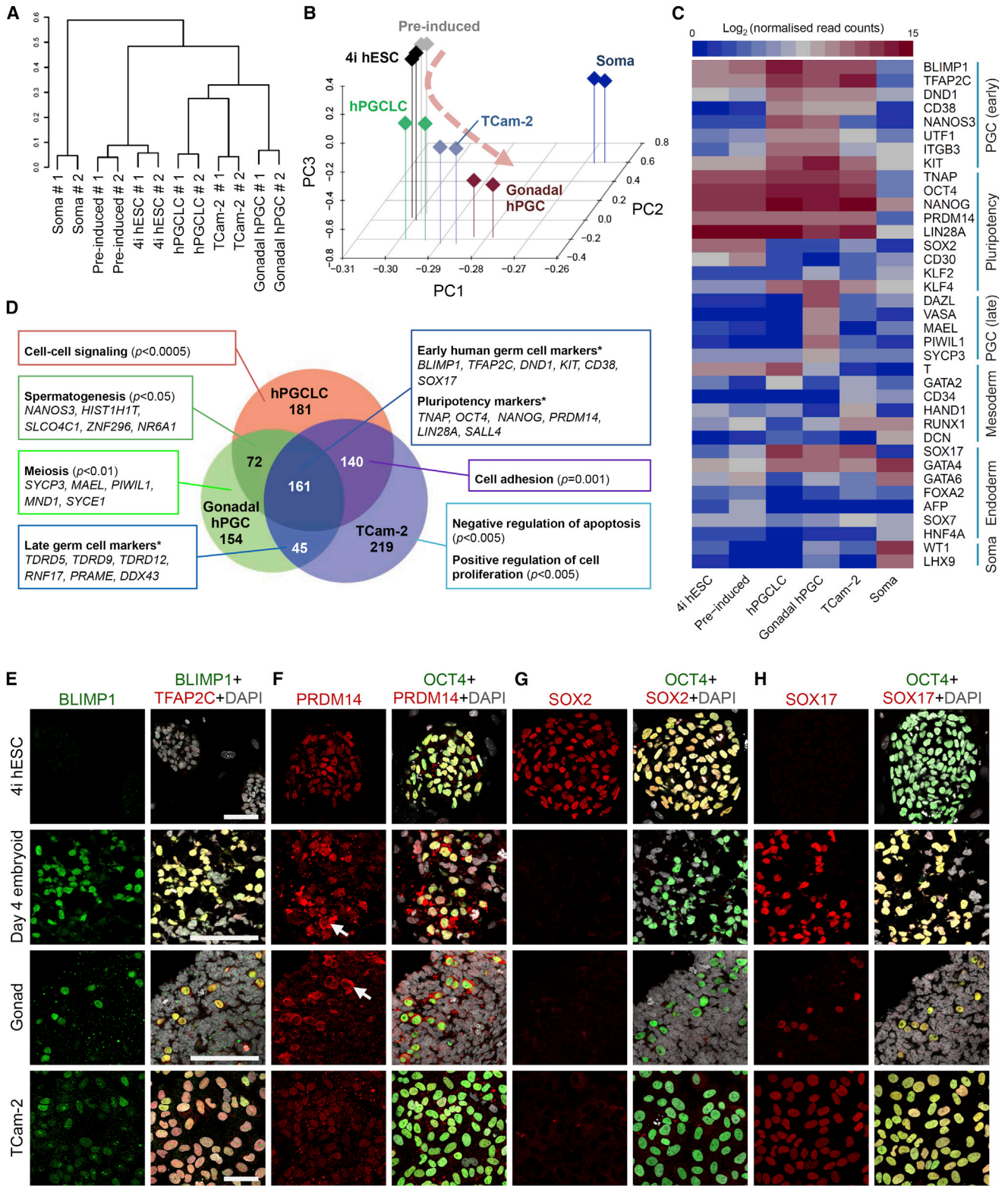
(A) Schematic protocol for hPGCLCs specification from hESCs.

(B) Development of day 1–7 embryoids derived from WIS2-NANOS3-mCherry hESCs. Top row: images of embryoids. Bottom row: FACS analysis of the dissociated embryoids with anti-TNAP-Alexa Fluor 647 and NANOS3-mCherry to detect hPGCLCs.

(C) Expression analysis by RT-qPCR of TNAP-positive 4i hESCs (hESC TNAP+), TNAP/NANOS3-mCherry-positive hPGCLCs (TNAP+N3+), and the remaining cells (TNAP-N3-) of day 4 embryoids (D4 embryoid). Relative expression levels are shown with normalization to  $\beta$ -ACTIN. Error bars indicate mean  $\pm$  SD from three independent biological replicates.

(D) Immunofluorescence of a day 4 embryoid showing coexpression of NANOS3-mCherry, NANOG, and OCT4 in hPGCLCs. Scale bar, 66  $\mu$ m.





**Figure 2. hPGCLC Shares Transcriptional Profile with Human Embryonic PGCs and TCam-2 Seminoma**

(A) Unsupervised hierarchical clustering (UHC) of gene expression in 4i hESC, preinduced cells (Pre-induced), day 4 hPGCLCs (hPGCLC), gonadal hPGC, TCam-2, and gonadal somatic cell (Soma). RNA-seq was performed on two biological replicates (#1 and #2) for each cell type. (B) PCA of RNA-seq data. Arrowline indicates potential germline progression from 4i hESC to hPGCLC and gonadal hPGC.

(legend continued on next page)

compared to soma (Table S1), the three germline-related cell types shared expression of 161 genes, including pluripotency and germline-specific genes: *BLIMP1*, *TFAP2C*, *CD38*, *SOX17*, *OCT4*, and *NANOG* (Figure 2D). Gene ontology (GO biological process) analysis revealed (Table S1) that hPGCLCs from male cell line and male gonadal hPGCs were commonly enriched in “spermatogenesis” genes—for example, *NANOS3* and *HIST1H1T*—whereas meiosis-related *SYCP3*, *MAEL*, and *PIWIL1* genes were upregulated only in embryonic hPGCs (Figures 2C and 2D). Interestingly, TCam-2 and hPGCs revealed expression of a number of late germ cell markers, including Tudor-domain-containing *TDRD5*, *TDRD9*, and *TDRD12* genes, which have been implicated in PIWI-interacting RNA biogenesis pathway (Shoji et al., 2009) (Figure 2D). As expected, TCam-2 showed characteristics associated with cancer cells, including genes that promote cell proliferation with suppression of apoptosis genes (Figure 2D). Altogether, hPGCLCs, TCam-2, and hPGCs share key germ cell characteristics and expressed the core germ cell genes, including *CD38*, whereas the differentially expressed genes reflected their corresponding stages of development and cell identity.

Principal component analysis (PCA) further illustrates the relationships between the different cell types. PCA reduces dimensionality of whole-genome expression data by transforming into principal components (PCs), in which the variance within the dataset is maximal. A three-dimensional (3D) PCA plot of the first three PCs showed that the 4i hESC, soma, and hPGC-related cells (hPGCLCs, gonadal hPGCs, and TCam-2) settled at three discrete positions (Figure 2B). In particular, hPGCLCs, TCam-2, and gonadal hPGCs aligned together at the lower extreme of PC2, whereas 4i hESCs and preinduced cells formed a distinct cluster with medium PC2 scores and soma at the upper extreme (Figures 2B and S2B). The relative contributions (weights) of key germ cell, pluripotency, and gonadal somatic genes to PC2 and PC3 were plotted as two-dimensional (2D) loading plot alongside a corresponding 2D PCA plot (Figure S2B). Indeed, the weights of germ cell, pluripotency, and somatic genes highly overlap with the position of germ-cell-related cell types, hESCs, and soma, respectively. Germ-cell-related genes, such as *SOX17*, *CD38*, and *NANOS3* loaded heavily for lower extreme of PC2, where hPGCLCs, TCam-2, and gonadal hPGCs were aligned. There was a clear difference in weights of early germ cell genes (commonly expressed in hPGCLCs, TCam-2, and gonadal hPGCs—for example, *BLIMP1* and *TFAP2C*) and late germ cell genes (expressed only in gonadal hPGCs or TCam-2—for example, *VASA* and *DAZL*) on PC3, with the latter weighing more heavily toward low PC3 scores (Figure S2B). Notably, decreasing scores of PC3 reflected potential progression of germ cell development from hPGCLCs toward gonadal

hPGCs, whereas TCam-2 aligned between hPGCLCs and gonadal hPGCs (Figures 2B and S2B).

Taken together, hPGCLCs demonstrate germ cell characteristics that are apparently en route to hPGCs, whereas our objective analysis placed TCam-2 in an intermediate position, which reflects their origin from hPGCs in vivo. Notably, hPGCLCs evidently represent the earliest stages of the human germ cell lineage, indicating that our in vitro model provides an important opportunity to explore the mechanism of hPGC specification, which is otherwise not possible because E9–E14 postimplantation human embryos are excluded from investigations. TCam-2 and other seminomas might, however, also serve as important in vitro models of human germ cell biology (Looijenga et al., 2014; Schafer et al., 2011).

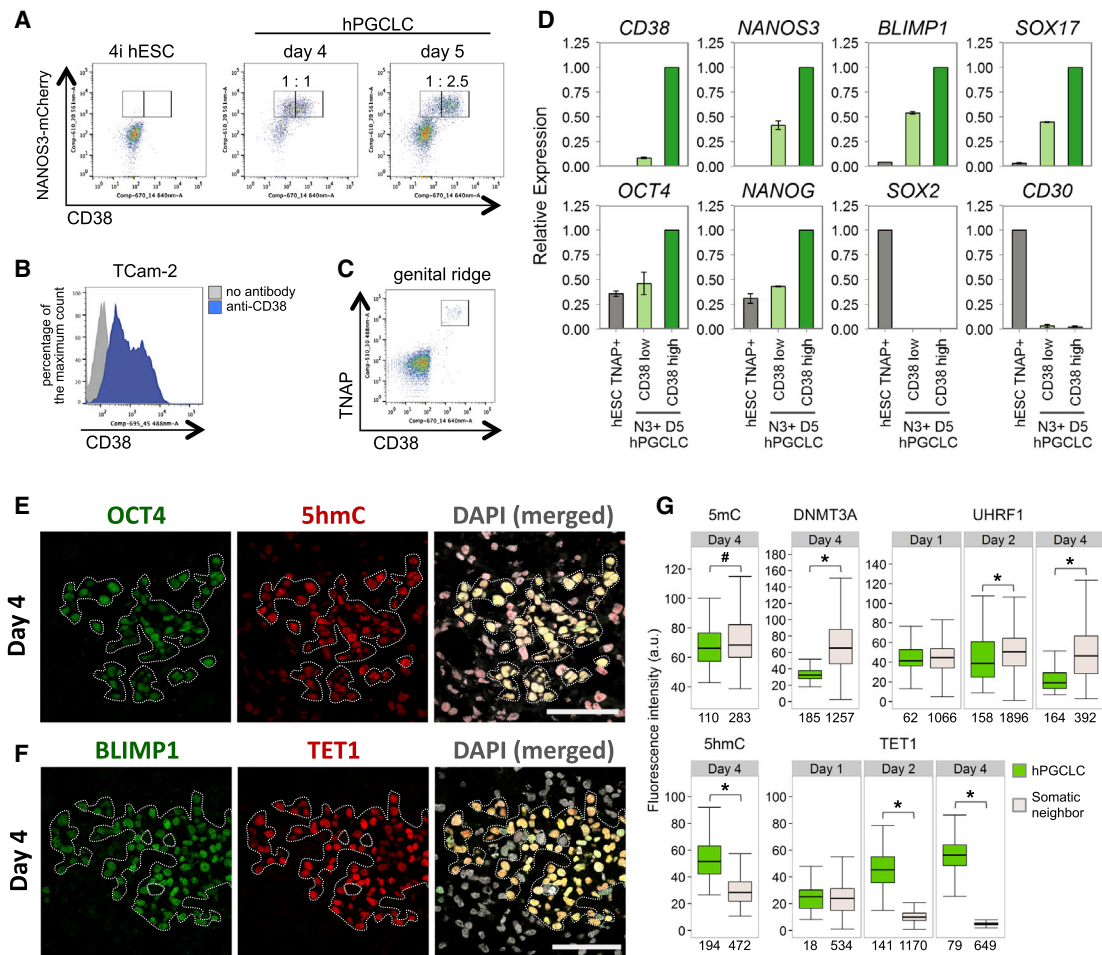
### CD38: A Core Marker of Human Germ-Cell-Related Cells and Initiation of the Epigenetic Program

CD38, an established cell-surface glycoprotein on leukocytes, is a prognostic marker of leukemia (Malavasi et al., 2008). Surprisingly, we detected *CD38* expression in hPGCLCs, gonadal hPGCs, and TCam-2, but not in hESCs or gonadal somatic cells (Figure 2C). Indeed, fluorescence-activated cell sorting (FACS) analysis showed that CD38 is present on all the TNAP-positive embryonic hPGCs and on TCam-2 with some heterogeneity (Figures 3B and 3C). Although CD38 is absent on hESCs, ~50% of the NANOS3-mCherry-positive hPGCLCs were CD38 positive on day 4 (Figure 3A), which increased to ~70% by day 5 (Figure 3A). Interestingly, the NANOS3-mCherry/CD38 cells had higher expression of *NANOS3*, *BLIMP1*, *SOX17*, *OCT4*, and *NANOG* (Figure 3D). By contrast, hESCs and embryonic carcinoma cells exhibit *CD30* (also known as *TNFRSF8*) and *SOX2* (Figures 3D and 2G) (Pallesen and Hamilton-Dutoit, 1988). Thus, CD38 and CD30 could potentially be used as additional markers of germ cell tumors in vivo (Figure 7D).

The RNA-seq of hPGCLC also revealed gene expression changes that indicate initiation of the epigenetic program with downregulation of *UHRF1*, *DNMT3A*, and *DNMT3B* and upregulation of *TET1* and *TET2* (Figure S3D). Notably, we found a significant increase in 5-hydroxymethylcytosine (5hmC) in hPGCLCs, which is consistent with an increase in the expression of *TET1*, an enzyme that converts 5-methylcytosine (5mC) to 5hmC (Figures 3E–3G), together with a small but significant decline in 5mC (Figures 3G and S3A). This indicates that, as in the mouse PGCs, loss of 5mC might be coupled with the conversion of 5mC to 5hmC (Hackett et al., 2013). At the same time, we detected a decline in the expression of de novo DNA methyltransferase 3A (*DNMT3A*) and *UHRF1* in hPGCLCs compared to the neighboring somatic cells in the embryoids (Figures 3G, S3B, and S3C). *UHRF1* targets *DNMT1* to replication foci to

(C) Heat map of gene expression of key PGC-associated genes (early and late) and of pluripotency, mesoderm, endoderm, and gonadal somatic (Soma) markers. (D) Venn diagram illustrates common and differentially expressed genes. Significantly upregulated genes in hPGCLC, gonadal hPGC, and TCam-2 (with log<sub>2</sub> (fold change) > 3 and adjusted p value < 0.05 versus gonadal Soma, respectively) were compared. Representative genes that were exclusive to each category are indicated. Text boxes indicate gene ontology biological processes (BP) terms that were significantly enriched as indicated by p values. Asterisk denotes custom categories absent from BP annotation.

(E–H) Immunofluorescence analysis for (E) *BLIMP1*, (F) *PRDM14*, (G) *SOX2*, and (H) *SOX17* on 4i hESCs (top row), day 4 hPGCLC embryoids (second row), human week 7 male gonad (third row), and TCam-2 (bottom row). Samples were counterstained with *TFAP2C* or *OCT4* to identify hPGCLCs in embryoids and hPGCs in embryonic gonad. Arrows indicate cytoplasmic enrichment of *PRDM14* (F). Scale bars, 70 μm.



**Figure 3. CD38 Expression in Human Germ-Cell-Related Cells and Epigenetic Changes in hPGCLCs**

(A) FACS analysis of NANOS3-mCherry and CD38 on WIS2-NANOS3-mCherry cell line cultured in 4i medium and on day 4 and 5 embryoids following hPGCLC induction. Ratios of CD38 low and high expression in the NANOS3-mCherry-positive cells are indicated.

(B) FACS histogram of CD38 low and high populations in Tcam-2.

(C) FACS analysis of CD38 and TNAP on genital ridges isolated from a week 6 human embryo.

(D) Expression analysis by RT-qPCR for FACS-sorted TNAP-positive 4i hESCs (TNAP+ hESC) and CD38 low or high/NANOS3-mCherry day 5 hPGCLCs. Relative expression levels are shown with normalization to  $\beta$ -ACTIN. Error bars indicate mean  $\pm$  SD from two independent biological replicates.

(E and F) Immunofluorescence analysis for 5hmC (E) and TET1 (F) on day 4 embryoids cryosection. OCT4 or BLIMP1 were used to identify hPGCLCs (highlighted). Scale bars, 50  $\mu$ m.

(G) Quantification of immunofluorescence intensity of various epigenetic marks/modifiers in hPGCLCs and somatic neighbors in day 1–4 embryoids (see also Figures S3A–S3C). For UHRF1, only KI-67-positive (proliferating) cells were used for quantification. Numbers below each box denotes number of cells analyzed. Black central line represents the median, boxes and whiskers represent the 25<sup>th</sup> and 75<sup>th</sup>, and 2.5<sup>th</sup> and 97.5<sup>th</sup> percentiles, respectively. Wilcoxon signed-rank test was used to test for statistical significance. #p < 0.05; \*p < 0.0001.

confer maintenance of DNA methylation (Liu et al., 2013). The repression of UHRF1 in proliferating (KI-67-positive) hPGCLCs would allow DNA-replication-coupled loss of 5mC, which is analogous to the observations on the early mouse germline.

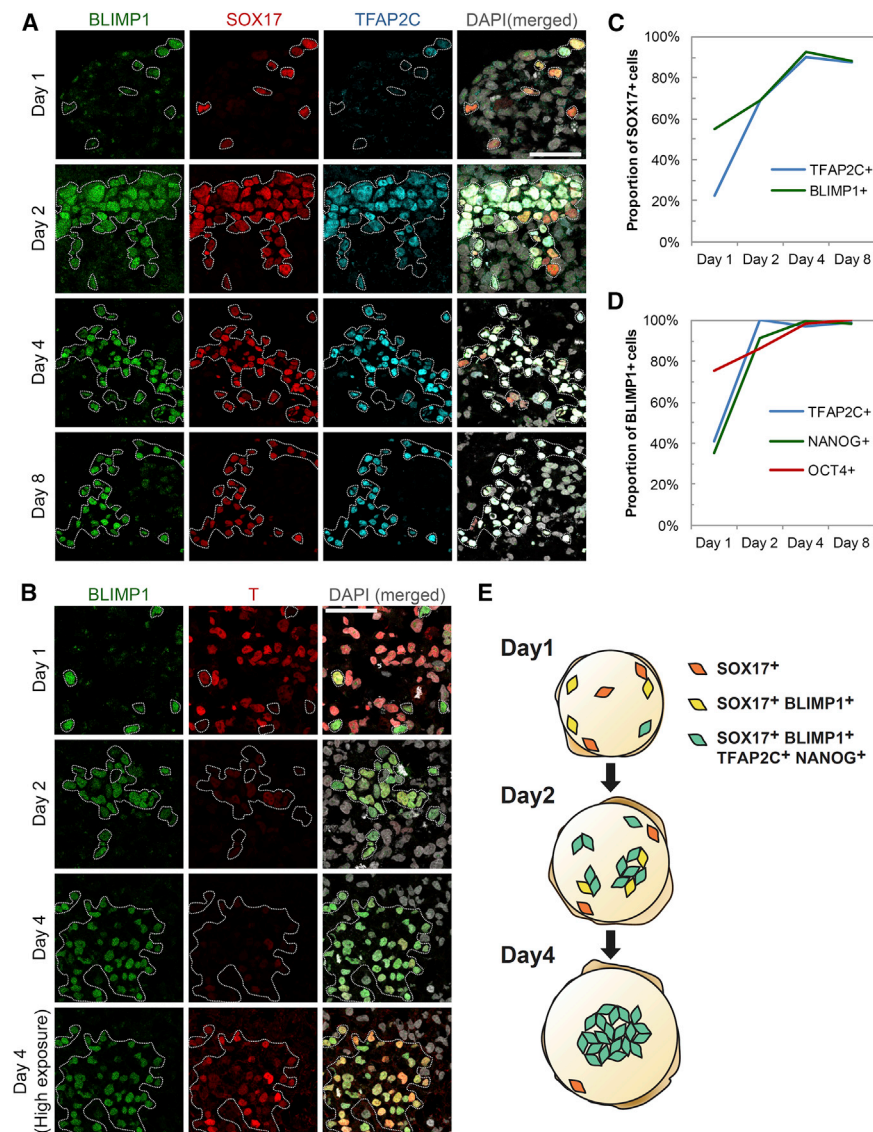
Taken together, day 4 hPGCLCs, which are the nascent human germ cells, already showed evidence for the initiation of epigenetic changes and DNA demethylation that are comparable to E8 mouse PGCs (Hackett et al., 2013). Notably, we also found that PRMT5, an arginine methyltransferase that was ubiquitously but weakly present in the cytoplasm of day 1 and 2 embryoids, showed enhanced expression in the nucleus of

day 4–8 hPGCLCs (Figure S3E). This is a shared characteristic with  $\sim$ E8 mouse PGCs, hPGCs, and Tcam-2 seminoma (Eckert et al., 2008). The translocation of PRMT5 to the nucleus is important for the suppression of transposable elements at the onset of DNA demethylation (Kim et al., 2014).

### Sequential Gene Expression during hPGCLC Specification in Embryoids

Having established similarities between hPGCLCs and the authentic hPGCs, we set out to investigate the mechanism of hPGCLC specification. First, for establishing the precise





**Figure 4. Sequential Expression of Germ-Cell-Related Transcription Factors in Single Cells during hPGCLC Specification**

(A and B) Immunofluorescence analysis for (A) BLIMP1, SOX17, and TFAP2C and (B) BLIMP1 and T in cryosections of day 1–8 embryoids after hPGCLC induction. Bottom row in (B) shows high exposure (digital) image of T, indicating low but specific expression in hPGCLC. SOX17-positive or BLIMP1-positive cells are highlighted. Scale bars, 50  $\mu$ m.

(C) Percentage of SOX17-positive (+) cells in day 1–8 embryoids that were also TFAP2C+ or BLIMP1+. Corresponds to data in Figure 4A.

(D) Percentage of BLIMP1-positive (+) cells in day 1–8 embryoids that were TFAP2C+, NANOG+, or OCT4+. Corresponds to data in Figures 4A, S4A, and S4B.

(E) Summary model for dynamics of hPGCLC specification in embryoids. SOX17-positive cells are first scattered in day 1 embryoids. They gain expression of BLIMP1, TFAP2C, and NANOG sequentially and form a cluster from day 2 onward until the formation of nascent hPGCLC.

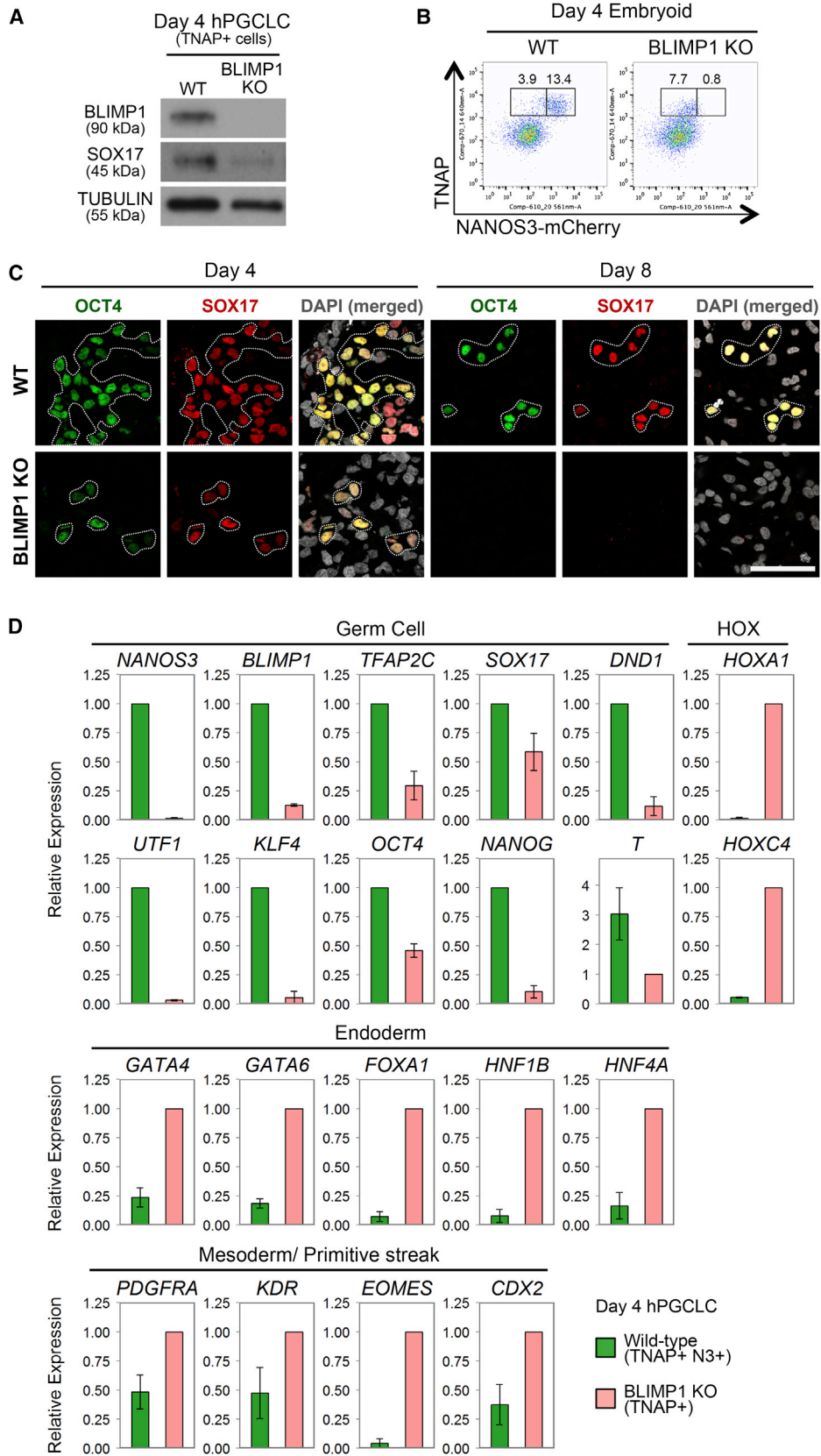
Expression of T is of particular interest, as it signifies competence for germ cell fate in mice, and BMPs can induce it in hESCs (Bernardo et al., 2011; Yu et al., 2011). Notably, expression of T was high in the majority of cells on day 1, except for most of the BLIMP1+ cells (Figure 4B). By day 2, however, T was dramatically downregulated in most cells, although now the BLIMP1+ nascent hPGCLC retained low T expression, which persisted until at least day 4 (Figure 4B), consistent with the T transcripts detected by RNA-seq (Figure 2C). It is possible that BMP signaling may initially enhance expression of T in the embryoids (Bernardo et al., 2011), and it is from this population

sequence of expression of the key hPGC-related genes at the resolution of single cells, we performed systematic time course analysis by immunofluorescence on day 1–8 embryoids after hPGCLC differentiation.

On day 1, we first detected SOX17 in a few widely scattered cells throughout the embryoids (Figures 4A and 4E). Among the SOX17-positive (+) cells, 55% were also BLIMP1+, and 22% were TFAP2C+ (Figures 4A and 4C). However, all BLIMP1+ cells coexpressed SOX17, suggesting that SOX17 is upregulated before BLIMP1. The proportion of BLIMP1+ and TFAP2C+ cells increased to ~70% on day 2 and to ~90% on days 4–8 (Figures 4A and 4C). These triple-positive cells likely represent specified hPGCLCs, as they also coexpressed other key hPGC genes. However, ~10% of single SOX17+ cells failed to undergo hPGCLC specification but persisted in day 4–8 embryoids. These may be aberrant cells or else may belong to other lineages.

that hPGCLCs are specified, which reflects the events during mouse PGC induction (Aramaki et al., 2013).

Expression of OCT4 was low but widespread in the day 1 embryoids, including 75% of the BLIMP1+ cells (Figures S4B and 4D). Although the overall OCT4 expression declined dramatically in day 2 embryoids, it was strongly expressed in ~86% of the BLIMP1+ cells. Subsequently, all BLIMP1+ cells became highly OCT4+ by day 4. By contrast, NANOG was expressed in ~35% of BLIMP1+ cells on day 1, but it was generally absent in other cells in the embryoids (Figures 4D and S4A). Thereafter, NANOG was also rapidly upregulated in the majority of BLIMP1+ cells by day 2–4. The upregulation of key pluripotency genes, such as OCT4 and NANOG, is also reminiscent of their re-expression in mouse PGCs (Magnúsdóttir et al., 2013). Although NANOS3-mCherry expression was weakly detected in 24% of OCT4+ cells at day 2 (Figure S4C), it was detected in all OCT4+ cells on day 4, confirming their PGCLC identity.



(legend on next page)



PRDM14 is a key regulator of pluripotency in mouse and human ESCs (Chia et al., 2010; Grabole et al., 2013; Ma et al., 2011; Yamaji et al., 2013) and is a key regulator of mouse PGC specification (Yamaji et al., 2008). PRDM14 was generally down-regulated in day 1–2 embryoids but was detectable in the nucleus of most BLIMP1+ cells by day 4 (Figure S4A). Notably, in a minority of BLIMP1/NANOG-positive hPGCLCs at day 8, PRDM14 was enriched in the cytoplasm (Figure S4A), which was the case in most of the gonadal hPGCs (Figure 2F). This is in marked contrast to the persistent nuclear PRDM14 expression in mouse PGCs (Grabole et al., 2013).

The SOX17/BLIMP1 double-positive cells were initially distributed randomly in day 1 embryoids (Figure 4A) but were then loosely organized in clusters and often a single cluster in day 2 embryoids. By day 4, generally one and occasionally two tight clusters of hPGCLCs were observed either at the core or periphery of each embryoid (Figure 4E). Cumulative observations suggest that SOX17/BLIMP1 might be among the key regulators of hPGCLC specification. Although OCT4 and NANOG were detected between days 1 and 2 in conjunction with NANOS3-mCherry and other PGC-specific genes from days 2–4, PRDM14 was upregulated more gradually in hPGCLCs and was subsequently detected in the cytoplasm of embryonic hPGCs. Following the early expression of SOX17 and BLIMP1 in hPGCLCs, these two transcription factors were also detected in embryonic hPGCs in vivo, as well as in Tcam-2 (Figures 2E and 2H). These observations suggest that SOX17-BLIMP1 might be among the critical determinant of hPGC specification and maintenance.

### Role of BLIMP1 during hPGCLC Specification

BLIMP1 is the first and key regulator of mouse PGC, and loss of function abrogates PGC fate (Ohinata et al., 2005; Vincent et al., 2005). However, BLIMP1 expression is apparently downstream of SOX17 in hPGCLCs (Figures 4A and 4C). We examined its mechanistic role by generating *BLIMP1* knockout (KO) NANOS3-mCherry hESC line (Figure S5A). These cells showed loss of BLIMP1 by western blot (Figure 5A) and immunofluorescence (Figure S5B) on day 4 of hPGCLCs induction. Notably, there was also a loss of NANOS3-mCherry-positive cells, together with a significant reduction of NANOG, OCT4, and TFAP2C expression on day 4 (Figures 5C and S5B), indicating a failure of hPGCLC specification, and all of these cells disappeared by day 8 (Figure 5C). However, we detected ~8% of TNAP-positive cells in day 4 embryoids (Figure 5B). This observation is highly reminiscent of the effects of *Blimp1* mutation on mouse PGC specification (Ohinata et al., 2005).

We isolated and characterized the TNAP-positive cells by FACS and confirmed loss of *BLIMP1*, except for low expression

of mutant transcripts (Figure 5D). These cells also showed loss of *NANOS3*, *UTF1*, and *KLF4* and reduced expression of *TFAP2C*, *DND1*, *OCT4*, *NANOG*, and *T* (Figures 5D and S5B). In addition, they showed prominent upregulation of mesodermal/primitive streak and *HOX* genes, as well as endodermal genes, including *GATA4*, *GATA6*, *FOXA1*, *HNF1 $\beta$* , and *HNF4 $\alpha$*  (Figure 5D). By contrast, endodermal genes were not upregulated in *Blimp1* mutant mouse PGCs (Kurimoto et al., 2008; Vincent et al., 2005). This suggests that BLIMP1 probably suppresses endoderm and other somatic genes, which might otherwise be induced by SOX17 and BMP signaling during hPGCLCs specification (Figure 6H). Loss of *BLIMP1* and *TFAP2C* also caused upregulation of *HOX* genes in Tcam-2 (Weber et al., 2010). This suggests that one of the roles of BLIMP1 is to continually suppress the somatic program during human germline development.

### SOX17 Is the Key Regulator of hPGCLCs, which Acts Upstream of BLIMP1

Expression of SOX17 among T-positive cells prior to BLIMP1 apparently marks the onset of hPGCLC specification, which is a key difference between the specification of human and mouse germline fate (see Figure 4). Notably, SOX17 and BLIMP1 are also expressed in the authentic in vivo hPGCs and in Tcam-2 (de Jong et al., 2008) (Figure 2). Knockdown of SOX17 in Tcam-2, which exhibits key germ cell characteristics (Looijenga et al., 2014) (Figure 2), induced repression of the pluripotency genes *NANOG*, as well as of the PGC-genes *BLIMP1*, *NANOS3*, *TFAP2C*, *STELLA*, and *KIT* (Figure S6A). This suggests that SOX17 might be important for regulating the established germline gene expression network.

We addressed the role of SOX17 during hPGCLC specification by generating *SOX17* KO NANOS3-mCherry hESC line (Figure S6B) and validated absence of SOX17 expression in day 4 embryoids from mutant cells by western blot and immunofluorescence (Figures 6A and S6C). Notably, we did not detect any NANOS3-mCherry or TNAP-positive cells in the embryoids from *SOX17* mutant cells (Figure 6B). Further, RT-qPCR analysis of day 4 *SOX17* null embryoids showed absence of *NANOS3*, *TFAP2C*, *DND1*, *UTF1*, *KLF4*, *OCT4*, *NANOG*, and, importantly, *BLIMP1* (Figure 6C). Instead, there was upregulation of mesodermal genes *PDGFRA*, *KDR*, and *HOXA1* (Figure 6C). Although a few *TFAP2C*-positive cells were detected on day 4, they were BLIMP1 negative and most likely belong to other lineages (Figure S6C).

To determine whether SOX17 acts cell autonomously, we mixed wild-type NANOS3-mCherry hESCs with the *SOX17* null hESCs in 1:1 ratio during induction of hPGCLCs by cytokines.

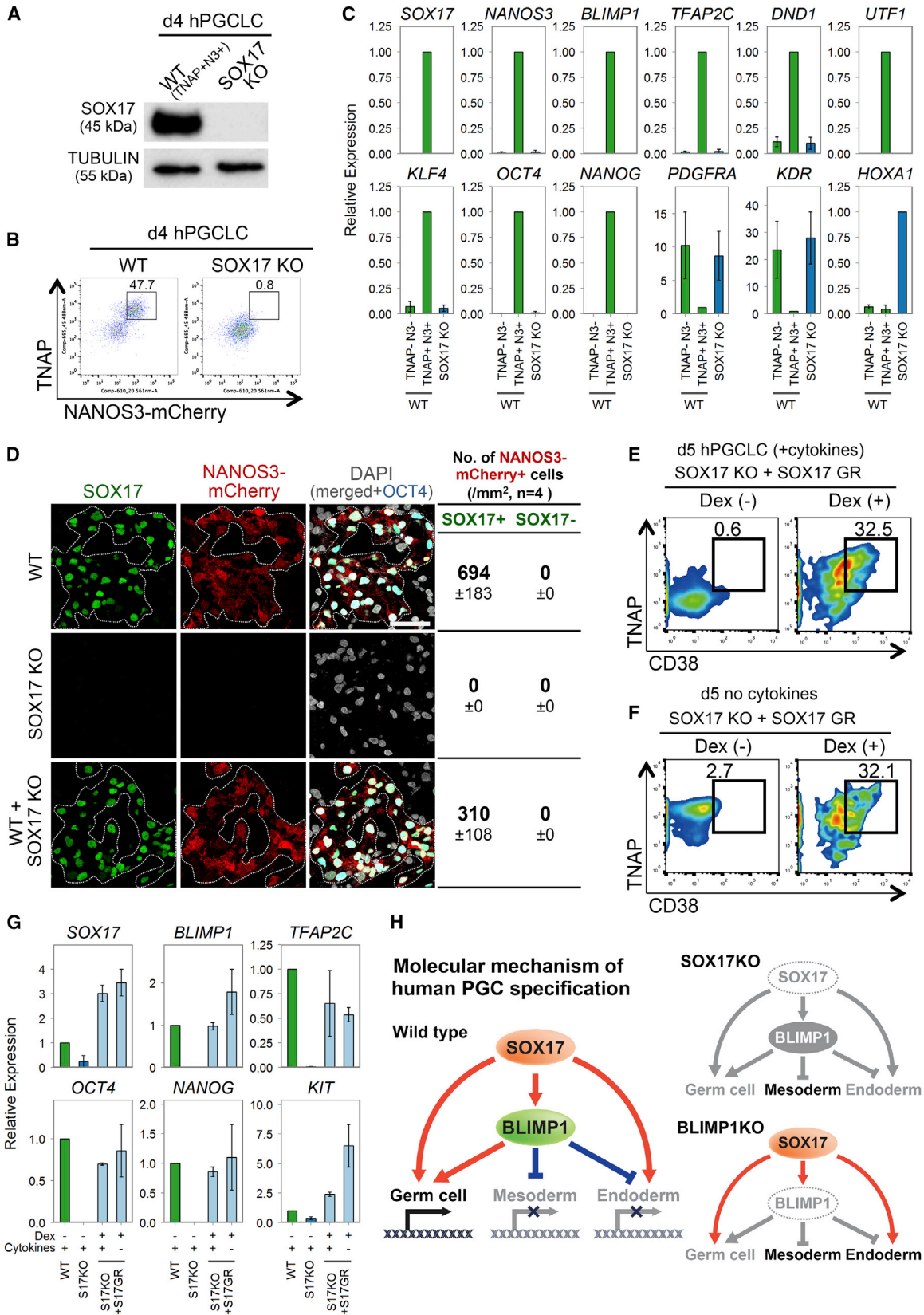
### Figure 5. Role of BLIMP1 in hPGCLC Specification

(A) Western blot analysis of BLIMP1 and SOX17 in TNAP-positive (TNAP+) cells sorted from wild-type (WT) and BLIMP1 knockout (BLIMP1 KO) day 4 embryoids after hPGCLC induction. TUBULIN was used as loading control.

(B) FACS analysis of TNAP and NANOS3-mCherry on WT and BLIMP1 knockout (BLIMP1 KO) day 4 embryoids.

(C) Immunofluorescence for OCT4 and SOX17 in cryosections of WT and BLIMP1 KO day 4 and 8 embryoids. OCT4-positive cells are highlighted. Scale bar, 50  $\mu$ m.

(D) Expression analysis by RT-qPCR for WT TNAP/NANOS3-mCherry double-positive cells (WT; TNAP+N3+) and BLIMP1 KO TNAP single-positive cells (BLIMP1 KO; TNAP+) sorted from day 4 embryoids. Relative expression levels are shown with normalization to  $\beta$ -ACTIN. Error bars indicate mean  $\pm$  SD from two independent biological replicates.



(legend on next page)

All NANOS3-mCherry positive cells detected by immunofluorescence on day 4 were SOX17 positive (Figure 6D), indicating that SOX17 null hESCs did not undergo hPGCLC specification even in the presence of wild-type cells. The overall number of NANOS3-mCherry-positive cells in the embryoid with mixed cells was about half of that in the control consisting of wild-type cells only (Figure S6D), suggesting that SOX17 null cells did not affect PGCLC induction from wild-type cells. Thus, SOX17 null cells have intrinsic defect for hPGCLC specification.

To determine the competency of the SOX17 null hESCs, we transfected an inducible SOX17 fusion construct with human glucocorticoid receptor ligand-binding domain (GR) into the SOX17 null hESCs. This would allow dexamethasone (Dex) to activate the SOX17-GR and induce translocation of SOX17 fusion protein from the cytoplasm into the nucleus (Brocard et al., 1998). After 5 days of induction with cytokines and Dex in the SOX17 null SOX17-GR hESCs, expression of germ cell genes *BLIMP1*, *TFAP2C*, *OCT4*, *NANOG*, and *KIT* and the TNAP/CD38-positive population was restored (Figures 6E and 6G). This demonstrates that SOX17 null hESCs maintain competency for hPGCLC specification. Strikingly, activation of SOX17 alone in the absence of cytokines was sufficient to induce germ cell genes and TNAP/CD38-positive cells from 4i hESCs (Figures 6F and 6G). Taken together, SOX17 is indispensable and sufficient for hPGCLC gene induction from competent hESCs, and it acts upstream of BLIMP1 and other genes to initiate the human germ cell transcriptional network (Figure 6H). Interestingly, loss of SOX17 in TCam-2 also causes a repression of germ-cell- and pluripotency-associated genes (Figure S6A). This suggests that SOX17 might also be important for the maintenance of the germ cell state because it is also highly expressed in embryonic hPGCs.

### Specification of hPGCLCs from Germ-Cell-Competent hESC/hiPSCs

Because gene expression of hESCs in 4i medium resembles that of hESC after preinduction for 2 days in bFGF/TGF $\beta$  (Figures 2A, 2B, and S2A), we decided to investigate hPGCLC induction directly in hESCs maintained in 4i medium (Figure 1A). Indeed, hPGCLCs could be induced directly from 4i hESCs

with apparent enhanced response resulting in ~46% hPGCLCs (Figure 7A). These hPGCLCs showed a slightly higher intensity of NANOS3/TNAP by FACS, and a greater proportion of them were CD38 positive (Figure 7A). Notably, cells maintained for more than 2 weeks in the conventional hESC medium, regardless of whether they were initially maintained in 4i medium, showed a significantly lower numbers of hPGCLCs (~5%) with a reduced intensity of NANOS3-mCherry/TNAP and CD38 expression (Figure 7A). This demonstrates that hESCs in 4i medium are highly competent for the hPGCLC fate. Importantly, the competent state is conferred reversibly because it is gained and lost in 4i and conventional culture conditions, respectively.

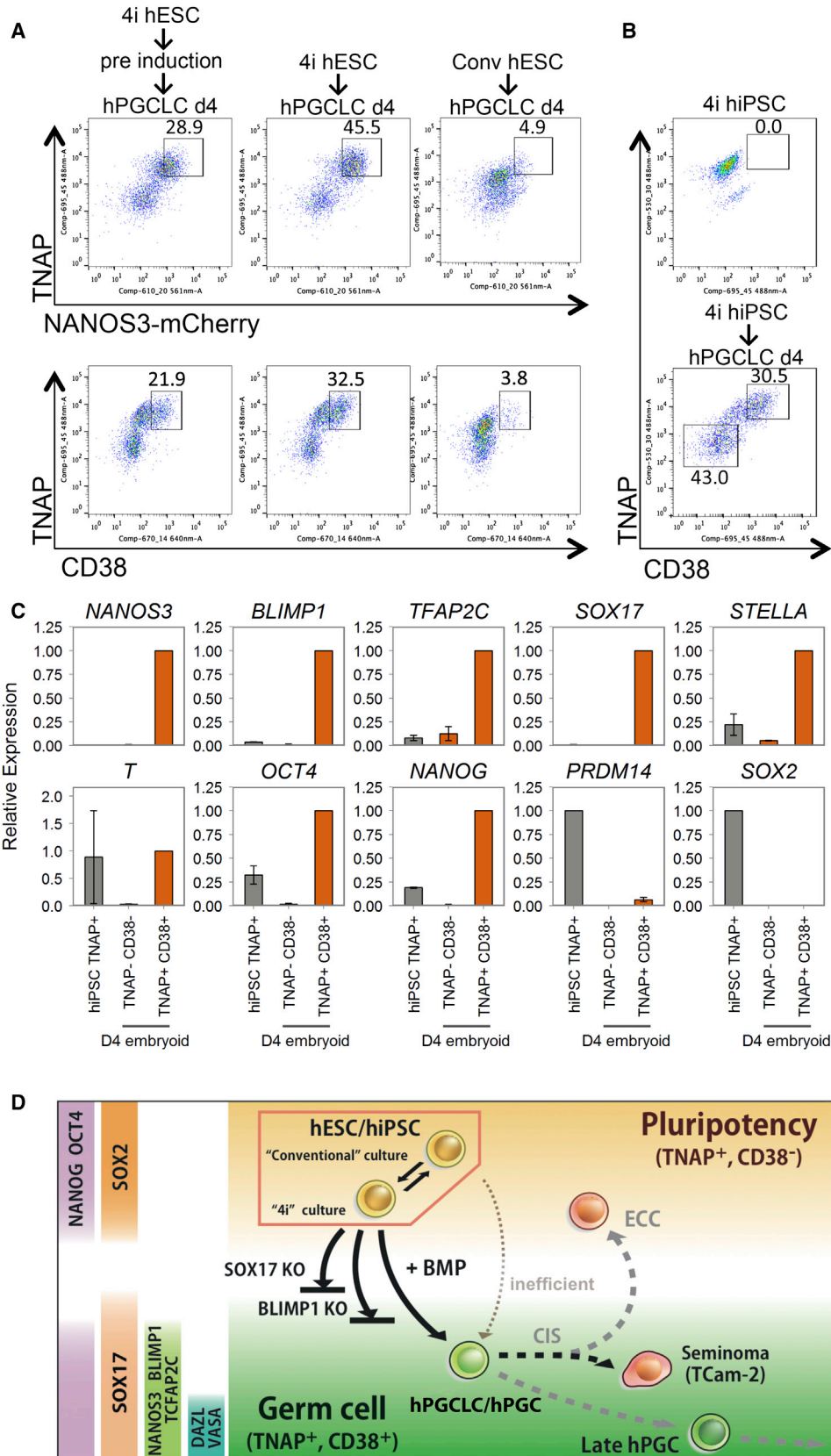
Global gene expression analysis indicated overall similarities between hESCs in the conventional medium versus those in “4i” medium ( $r = 0.923$ ) but with notable differences (Figure S7A). Although these cells showed similar expression levels of core pluripotency factors *OCT4*, *NANOG*, and *SOX2*, 4i hESCs had higher expression of mesoderm and gastrulation genes, including *T*, *RUNX1*, and *PDGFRA* (Figures S7B and S7C and Table S2). Furthermore, OCT4-positive cells in 4i hESCs had varying levels of T protein, possibly due to inhibition of GSK3 $\beta$  (Chen et al., 2013), which is not the case in hESC cultured in conventional condition (Figure S7D). These differences might be relevant for the mechanism of competence of ESCs for PGCLC, which merits further investigation.

We also asked whether hiPSCs could be used to generate and isolate hPGCLCs using the combination of surface markers CD38 with TNAP (Figures 2C and 3A–3D). Using FX71.1 hiPSCs (see Experimental Procedures) maintained in 4i medium for >2 weeks that lack CD38 expression, we detected ~31% of TNAP/CD38 double-positive cells after 4 days in response to cytokines (Figure 7B). TNAP/CD38 double-positive hPGCLCs showed expression of *NANOS3*, *BLIMP1*, *TFAP2C*, *SOX17*, *STELLA*, *T*, *OCT4*, *NANOG*, and *PRDM14*, but not of *SOX2* (Figure 7C). Similar results were obtained with another hiPSC line (C1, Gafni et al., 2013). Thus, hPGCLC specification could be induced efficiently and directly in hiPSCs that are maintained in the 4i medium, which could be used for disease modeling using patient-derived iPSCs.

### Figure 6. Role of SOX17 in hPGCLC Specification

- (A) Western blot analysis of SOX17 expression of WT day 4 TNAP/NANOS3-mCherry-positive hPGCLCs (WT, TNAP+N3+), and whole SOX17 knockout day 4 embryoids. TUBULIN was used as loading control.
- (B) FACS analysis of TNAP and NANOS3-mCherry on WT and SOX17 KO day 4 embryoids.
- (C) RT-qPCR analysis of TNAP/NANOS3-mCherry FACS-sorted WT double-negative (TNAP-N3-) or -positive (TNAP+N3+) cells sorted from day 4 embryoids and whole SOX17 KO embryoids (SOX17 KO). Relative expression levels are shown with normalization to  $\beta$ -ACTIN. Error bars indicate mean  $\pm$  SD from two independent biological replicates.
- (D) Immunofluorescence of day 4 embryoids derived from WT, SOX17 knockout (SOX17 KO), and from 1 to 1 mixture of WT and SOX17 KO 4i hESCs. The number of NANOS3-mCherry+ cells with or without SOX17 expression is shown. Quantification was based on seven to nine confocal images from four independent embryoids of each condition. Scale bars, 50  $\mu$ m.
- (E and F) FACS analysis of TNAP and CD38 on day 5 embryoids derived from SOX17 knockout 4i hESCs containing SOX17 fusion construct with human glucocorticoid receptor ligand-binding domain (SOX17 KO+ SOX17 GR). Embryoids were derived in the presence (E) or absence (F) of cytokines with (Dex+) or without (Dex-) addition of dexamethasone.
- (G) RT-qPCR analysis of day 5 hPGCLC derived from WT and SOX17 KO (S17KO) and SOX17 KO + SOX17-GR (S17KO+S17GR) hESCs with (+) or without (-) dexamethasone (Dex) and in the presence (+) or absence (-) of cytokines. FACS-sorted NANOS3-mCherry/TNAP double-positive cells or whole embryoids (for S17KO) were used. Relative expression levels are shown with normalization to *GAPDH*. Error bars indicate mean  $\pm$  SD from two biological replicates.
- (H) Model for establishment of hPGC transcription network by SOX17 and BLIMP1. SOX17 induces germ cell genes and, potentially, endoderm gene. Expression of BLIMP1, downstream of SOX17, suppresses endodermal genes, as well as mesodermal genes. As a result, the SOX17-BLIMP1 axis initiates hPGC program from competent cells upon induction by BMP signaling. The hPGC specification gene network is abrogated in the absence of SOX17 or BLIMP1.





(legend on next page)

## DISCUSSION

Specification of hPGCLCs from germ cell competent hESC/hiPSC provides a unique mechanistic view of the establishment of the human germline (Figure 7D). Notably, SOX17 is the key regulator of hPGCLC specification, whereas BLIMP1 represses endodermal and other somatic genes during hPGCLC specification. This was unexpected because the primary role of SOX17 is in the endoderm (D'Amour et al., 2005; Kanai-Azuma et al., 2002) and because *Sox17* has no detectable role in the specification of mouse PGCs (Hara et al., 2009; Kanai-Azuma et al., 2002). A comparison among hPGCLCs, embryonic hPGCs, and Tcam-2 seminoma (Looijenga et al., 2014; Schafer et al., 2011) also establishes the likely progression of the early human germline (Figure 2B).

During hPGCLC specification from hESCs, SOX17 was first detected in a few scattered cells in day 1 embryoids, which showed expression of T. The nascent hPGCLCs subsequently form a few or a single cluster in day 4–8 embryoids. SOX17 is indeed essential for hPGCLC specification, and this gene alone is sufficient to induce germ cell genes in the SOX17 mutant cells, with or without cytokines from 4i hESCs. SOX17 acts cell autonomously, and the presence of mutant cells in embryoids had no effect on hPGCLC specification from wild-type cells. It will be of interest to see how SOX17, with or without BLIMP1, determines cell fates between germ cell, hematopoietic, and endodermal lineages (Nakajima-Takagi et al., 2013; Clarke et al., 2013).

Expression of BLIMP1 is intimately associated with SOX17 during hPGCLC specification. BLIMP1 represses somatic genes, including mesendodermal genes, which might allow SOX17 to function as the regulator of hPGCLCs specification. A mutation in BLIMP1 abrogates hPGCLC specification but without completely abolishing SOX17 expression. However, TNAP-positive cells were detected, in which PGC-specific genes were repressed but some endodermal and other somatic genes were upregulated. This suggests that BLIMP1 might repress them during hPGCLC specification, but not excluding its wider role in hPGCLC specification in conjunction with SOX17. In mice, BLIMP1 also represses somatic genes in PGCs (Ohinata et al., 2005; Vincent et al., 2005), but it is also a key determinant of PGC specification, together with PRDM14 and TFAP2C (Magnúsdóttir et al., 2013).

Although PRDM14 is critical for mouse PGC specification, its expression during hPGCLC specification is delayed and significantly diminished in hPGCs and is very low in Tcam-2 compared to hESCs. PRDM14 is crucial for maintaining pluripotency in human and mouse ESCs, although different signaling molecules

regulate its expression, and the genomic targets in ESCs also differ in the two species (Chia et al., 2010; Grabole et al., 2013; Ma et al., 2011; Yamaji et al., 2013). The rapid downregulation and delayed re-expression of PRDM14 at the onset of hPGCLC induction (Figures 2F and S4A) may allow exit of pluripotency from 4i hESC en route to germ cell differentiation. Interestingly, the human and mouse PRDM14 proteins have diverged, which might result in functional differences. There is expression of SOX2 in mouse PGCs, which is apparently regulated by PRDM14 (Grabole et al., 2013), whereas SOX2 is repressed in human hPGCLCs/hPGCs. BLIMP1 also apparently represses SOX2 during spontaneous differentiation of hPGCLCs from hESCs (Lin et al., 2014). By contrast, KLF4 is expressed in hPGCLCs/hPGCs (Figure 2C), but not in mouse PGCs (Kurimoto et al., 2008). The precise significance of the repression and expression of pluripotency genes, including NANOG, remains to be elucidated.

Germ cell neoplasia or carcinoma in situ (CIS) (Skakkebaek, 1972) can generate embryonal carcinoma cells that resemble hESCs or seminomas such as Tcam-2 that inherit key characteristics of germ cells (Looijenga et al., 2014; Schafer et al., 2011). Tcam-2 expresses *SOX17*, *BLIMP1*, *TFAP2C*, *KIT*, and *DND1* with low levels of *SOX2* and *PRDM14*. Knockdown of SOX17 in Tcam-2 induces repression of germ cell and pluripotency genes (Figure S6A), whereas knockdown of BLIMP1 and TFAP2C induced upregulation of somatic genes (Weber et al., 2010). These observations suggest that SOX17 and BLIMP1 might also be important for the maintenance of the early human germline. We found that CD38 is a marker of all human germline-related cells, including seminomas. Distinction between seminoma and embryonal carcinoma could therefore be made by the expression of SOX17/CD38 and SOX2/CD30, respectively (de Jong et al., 2008). Furthermore, CD38/TNAP are reliable markers for the isolation of hPGCLCs derived from hESC/hiPSC without any reporters.

The hPGCLCs also showed early signs of DNA demethylation, which is consistent with the germline-specific epigenetic program. The striking upregulation of 5hmC concomitantly with TET1 suggests that, similar to mouse, conversion of 5mC to 5hmC may contribute to DNA demethylation in hPGC (Hackett et al., 2013). Furthermore, repression of UHRF1 and DNMT3A in hPGCLCs would promote DNA-replication-coupled loss of 5mC. Indeed, there was a small but significant decline in 5mC in hPGCLCs, a trend that could lead to a significant loss of 5mC with further proliferation of hPGCLCs. Furthermore, we detected upregulation and translocation of PRMT5 to the nucleus in hPGCLC, which occurs with the onset of global DNA

### Figure 7. Induction and Isolation of hPGCLCs from Competent hiPSCs/hESCs

(A) FACS analysis of TNAP and NANOS3-mCherry (top) and TNAP and CD38 (bottom) on day 4 embryoids induced from 4i hESCs after preinduction (left), directly without preinduction (middle) or from conventional hESCs (right, Conv hESC).

(B) FACS analysis of TNAP and CD38 in 4i hiPSCs (top) and day 4 embryoids derived from 4i hiPSCs after direct induction (bottom).

(C) Expression analysis by RT-qPCR on TNAP-positive hiPSCs (iPSC TNAP+), TNAP/CD38 double-negative (TNAP–CD38–) population and TNAP/CD38 double-positive population (TNAP+CD38+) on day 4 after hPGCLC induction. Relative expression levels are shown with normalization to  $\beta$ -ACTIN. Error bars indicate mean  $\pm$  SD from two independent biological replicates.

(D) Overview of human germline development. hESCs in 4i reversibly attains competence for germ cell fate. Exposure of 4i cells to cytokines containing BMPs results in strong induction of hPGCLCs following expression of SOX17-BLIMP1, which are among the key regulators of germ cell fate. SOX17 and BLIMP1 are detected in in vivo gonadal hPGC and Tcam-2 seminoma, indicating a likely progression of early human germ cell lineage. CD38, a cell-surface glycoprotein, is shared by all cells with germ cell characteristics, but not by hESC. Loss of SOX17 or BLIMP1 abrogates hPGCLC specification.

demethylation to repress transposable elements (Kim et al., 2014). Detailed analysis of the transcriptome and epigenome, together with the targets of SOX17 in hPGCLCs/hPGCs, should provide insights on the mechanism of how the epigenome is reset in the early human germline and potentially on the inheritance and consequences of transgenerational epigenetic inheritance (Heard and Martienssen, 2014).

This study shows that changes in pluripotent cell states can be induced by environmental factors with respect to gain and loss of competence for germ cell fate in hESCs in the 4i culture (Gafni et al., 2013). This competence for hPGCLCs is reversibly maintained and progressively lost in conventional culture conditions. Notably, hESCs in 4i medium show a slight upregulation of T together with HAND1 compared to conventional hESCs (Figure S7), with putative posterior primitive streak-like feature (Mendjan et al., 2014). This might explain why hESC in 4i are highly competent for hPGCLC fate. Because MAPK inhibitors may also alter the epigenetic state of pluripotent cells (Gafni et al., 2013), the precise molecular basis for competence for PGC fate remains to be elucidated in both mouse and human. Nonetheless, hESC/hiPSC can reversibly gain competence for hPGCLC specification in 4i medium, which provides a model for advances in human germ cell biology.

Mouse is the primary model organism for early mammalian development, pluripotency, and the regulation of cell fates. Post-implantation rodent embryos develop as egg cylinders with an overlying extraembryonic ectoderm, which is the source of signals, including BMP4, whereas postimplantation epiblast embryonic disc in humans is typical of many mammalian species (Barrios et al., 2013; de Fellici, 2013; Irie et al., 2014). These differences may affect the source, duration, and the nature of signaling molecules that regulate competence for cell fates in vivo. The evolutionary divergence in the pluripotent states in mouse and human might also result in differences in the mechanism of germline specification and, potentially, other cell fate decisions. If so, mechanisms of early cell fate decisions in mice cannot be safely or wholly extrapolated to specification events during early human development.

## EXPERIMENTAL PROCEDURES

### hESC/iPSC Culture and hPGCLC Differentiation

4i hESCs (WIS2: 46XY; WIBR3: 46XX; LIS1, 46XY) and iPSCs (FX71.1; a fragile X male patient-derived iPSC line, C1 female iPSC line) were grown in conditions adapted and modified from previously described WIS-NHSM conditions (Gafni et al., 2013). 4i cells were grown on irradiated mouse embryonic fibroblasts (MEFs) (GlobalStem) in knockout DMEM supplemented with 20% knockout serum replacement (KSR), 2 mM L-glutamine, 0.1 mM nonessential amino acids, 0.1 mM 2-mercaptoethanol (all GIBCO), 20 ng/ml human LIF (Stem Cell Institute [SCI]), 8 ng/ml bFGF (SCI), 1 ng/ml TGF- $\beta$ 1 (Peprotech), 3  $\mu$ M CHIR99021 (Miltenyi Biotec), 1  $\mu$ M PD0325901 (Miltenyi Biotec), 5  $\mu$ M SB203580 (TOCRIS bioscience), and 5  $\mu$ M SP600125 (TOCRIS bioscience). Cells were passaged every 3 to 5 days using TrypLE Express (GIBCO). 10  $\mu$ M of ROCK inhibitor (Y-27632, TOCRIS bioscience) was used for 24 hr after the passage.

To preinduce, 4i hESCs were dissociated with TrypLE Express and filtered with 50  $\mu$ m cell filter (PERTEC), and  $4 \times 10^5$  cells/12-well were plated on vitronectin/gelatin-coated plates (Gafni et al., 2013) in N2B27 medium (Ying et al., 2008) with 1% KSR, 10 ng/ml bFGF (SCI), 1 ng/ml TGF- $\beta$ 1 (Peprotech), or 20 ng/ml Activin A (SCI) and 10  $\mu$ M ROCK inhibitor. Medium was changed on day 1. After 2 days of preinduction, the cells are dissociated with TrypLE

and plated to ultra-low cell attachment U-bottom 96-well plates (Corning, 7007) at a density of 2,000–4,000 cells/well in 200  $\mu$ l PGCLC medium. PGCLC medium is composed of Glasgow's MEM (GMEM, GIBCO), 15% KSR, 0.1 mM nonessential amino acids, 0.1 mM 2-mercaptoethanol, 100 U/ml Penicillin-0.1 mg/ml Streptomycin, 2 mM L-Glutamine, 1 mM Sodium pyruvate, and the following cytokines: 500 ng/ml BMP4 (R&D Systems) or BMP2 (SCI), 1  $\mu$ g/ml human LIF (SCI), 100 ng/ml SCF (R&D Systems), 50 ng/ml EGF (R&D Systems), and 10  $\mu$ M ROCK inhibitor.

Conventional hESCs/hiPSCs were maintained on irradiated MEFs (GlobalStem) in DMEM/F12+GlutaMAX supplemented with 20% KSR, 0.1 mM nonessential amino acids, 0.1 mM 2-mercaptoethanol (all GIBCO), and 10–20 ng/ml of bFGF (SCI). Media were replaced every day. Cells were passaged every 4 to 6 days using 1 mg/ml of Dispase (GIBCO), and 10  $\mu$ M ROCK inhibitor (Y-27632, TOCRIS bioscience) was added for 24 hr after the passage.

## ACCESSION NUMBERS

The NCBI GEO accession number for the RNA-seq data reported in this paper is GSE60138.

## SUPPLEMENTAL INFORMATION

Supplemental Information includes Extended Experimental Procedures, seven figures, and three tables and can be found with this article online at <http://dx.doi.org/10.1016/j.cell.2014.12.013>.

## AUTHOR CONTRIBUTIONS

The study was conceived and designed by N.I., L.W., J.H.H., and M.A.S. The NANOS3-mCherry reporter hESC lines and the BLIMP1 and SOX17 knockout hESCs were generated by L.W. and S.V. hESC growth conditions were developed by L.W. and J.H.H. The PGCLC induction experiments were performed by N.I. and L.W. W.W.C.T. collected human embryos and performed immunofluorescence, RNA-seq, and bioinformatics analysis, together with S.D. and Y.M. Experiments on Tcam-2, including the knockdowns, exogenous SOX17 expression experiments, and western blot analysis, were performed by T.K. The study was supervised by M.A.S. and J.H.H. The manuscript was written by N.I., W.W.C.T., J.H.H., and M.A.S. with input from most authors.

## ACKNOWLEDGMENTS

We thank Rick Livesey and his lab for help with the culture of hESCs; Sohei Kitazawa and Janet Shipley for the Tcam-2 cells; Nigel Miller and Andy Riddell for cell sorting, Roger Barker, Xiaoling He, and Pam Tyers for collection of human embryos; and Charles Bradshaw for help with bioinformatics. We thank members of the Surani and Hanna labs for important discussions and technical help. N.I. is supported by Grant-in-Aid for fellows of the JSPS and by BIRAX (the Britain Israel Research and Academic Exchange Partnership) initiative, who provided a project grant to J.H.H. and M.A.S. J.H.H. is supported by Ilana and Pascal Mantoux, the Kimmel Award, ERC (StG-2011-281906), Helmsley Charitable Trust, ISF (Bikura, Morasha, ICORE), ICRF, the Abisch Frenkel Foundation, the Fritz Thyssen Stiftung, Erica and Robert Drake, Benozziyo Endowment fund, and the Flight Attendant Medical Research Institute (FAMRI). J.H.H. is a New York Stem Cell Foundation Robertson Investigator. W.W.C.T. is supported by Croucher Foundation and Cambridge Trust; M.A.S. is supported by HFSP and a Wellcome Trust Investigator Award.

Received: August 8, 2014

Revised: November 13, 2014

Accepted: December 4, 2014

Published: December 24, 2014

## REFERENCES

Aramaki, S., Hayashi, K., Kurimoto, K., Ohta, H., Yabuta, Y., Iwanari, H., Mochizuki, Y., Hamakubo, T., Kato, Y., Shirahige, K., and Saitou, M. (2013).



- A mesodermal factor, T, specifies mouse germ cell fate by directly activating germline determinants. *Dev. Cell* 27, 516–529.
- Barrios, F., Irie, N., and Surani, M.A. (2013). Perceiving signals, building networks, reprogramming germ cell fate. *Int. J. Dev. Biol.* 57, 123–132.
- Bernardo, A.S., Faial, T., Gardner, L., Niakan, K.K., Ortmann, D., Senner, C.E., Callery, E.M., Trotter, M.W., Hemberger, M., Smith, J.C., et al. (2011). BRACHYURY and CDX2 mediate BMP-induced differentiation of human and mouse pluripotent stem cells into embryonic and extraembryonic lineages. *Cell Stem Cell* 9, 144–155.
- Brocard, J., Feil, R., Chambon, P., and Metzger, D. (1998). A chimeric Cre recombinase inducible by synthetic, but not by natural ligands of the glucocorticoid receptor. *Nucleic Acids Res.* 26, 4086–4090.
- Chen, Y., Blair, K., and Smith, A. (2013). Robust self-renewal of rat embryonic stem cells requires fine-tuning of glycogen synthase kinase-3 inhibition. *Stem Cell Reports* 1, 209–217.
- Chia, N.Y., Chan, Y.S., Feng, B., Lu, X., Orlov, Y.L., Moreau, D., Kumar, P., Yang, L., Jiang, J., Lau, M.S., et al. (2010). A genome-wide RNAi screen reveals determinants of human embryonic stem cell identity. *Nature* 468, 316–320.
- Clarke, R.L., Yzaguirre, A.D., Yashiro-Ohtani, Y., Bondue, A., Blanpain, C., Pear, W.S., Speck, N.A., and Keller, G. (2013). The expression of Sox17 identifies and regulates haemogenic endothelium. *Nat. Cell Biol.* 15, 502–510.
- D'Amour, K.A., Agulnick, A.D., Eliazar, S., Kelly, O.G., Kroon, E., and Baetge, E.E. (2005). Efficient differentiation of human embryonic stem cells to definitive endoderm. *Nat. Biotechnol.* 23, 1534–1541.
- de Fellici, M. (2013). Origin, migration, and proliferation of human primordial germ cells. In *Oogenesis*, G. Coticchio, D.F. Albertini, and L. De Santis, eds. (London: Springer-Verlag), pp. 19–37.
- de Jong, J., Stoop, H., Gillis, A.J., van Gurp, R.J., van de Geijn, G.J., Boer, M., Hersmus, R., Saunders, P.T., Anderson, R.A., Oosterhuis, J.W., and Looijenga, L.H. (2008). Differential expression of SOX17 and SOX2 in germ cells and stem cells has biological and clinical implications. *J. Pathol.* 215, 21–30.
- De Miguel, M.P., Fuentes-Julián, S., and Alcaina, Y. (2010). Pluripotent stem cells: origin, maintenance and induction. *Stem Cell Rev.* 6, 633–649.
- Eckert, D., Biermann, K., Nettersheim, D., Gillis, A.J., Steger, K., Jäck, H.M., Müller, A.M., Looijenga, L.H., and Schorle, H. (2008). Expression of BLIMP1/PRMT5 and concurrent histone H2A/H4 arginine 3 dimethylation in fetal germ cells, CIS/IGCNU and germ cell tumors. *BMC Dev. Biol.* 8, 106.
- Gafni, O., Weinberger, L., Mansour, A.A., Manor, Y.S., Chomsky, E., Ben-Yosef, D., Kalma, Y., Viukov, S., Maza, I., Zviran, A., et al. (2013). Derivation of novel human ground state naive pluripotent stem cells. *Nature* 504, 282–286.
- Gkountela, S., Li, Z., Vincent, J.J., Zhang, K.X., Chen, A., Pellegrini, M., and Clark, A.T. (2013). The ontogeny of cKIT+ human primordial germ cells proves to be a resource for human germ line reprogramming, imprint erasure and in vitro differentiation. *Nat. Cell Biol.* 15, 113–122.
- Grabole, N., Tischler, J., Hackett, J.A., Kim, S., Tang, F., Leitch, H.G., Magnúsdóttir, E., and Surani, M.A. (2013). Prdm14 promotes germline fate and naive pluripotency by repressing FGF signalling and DNA methylation. *EMBO Rep.* 14, 629–637.
- Hackett, J.A., and Surani, M.A. (2014). Regulatory principles of pluripotency: from the ground state up. *Cell Stem Cell* 15, 416–430.
- Hackett, J.A., Zyllicz, J.J., and Surani, M.A. (2012). Parallel mechanisms of epigenetic reprogramming in the germline. *Trends Genet.* 28, 164–174.
- Hackett, J.A., Sengupta, R., Zyllicz, J.J., Murakami, K., Lee, C., Down, T.A., and Surani, M.A. (2013). Germline DNA demethylation dynamics and imprint erasure through 5-hydroxymethylcytosine. *Science* 339, 448–452.
- Hara, K., Kanai-Azuma, M., Uemura, M., Shitara, H., Taya, C., Yonekawa, H., Kawakami, H., Tsunekawa, N., Kurohmaru, M., and Kanai, Y. (2009). Evidence for crucial role of hindgut expansion in directing proper migration of primordial germ cells in mouse early embryogenesis. *Dev. Biol.* 330, 427–439.
- Hayashi, K., and Surani, M.A. (2009). Self-renewing epiblast stem cells exhibit continual delineation of germ cells with epigenetic reprogramming in vitro. *Development* 136, 3549–3556.
- Hayashi, K., de Sousa Lopes, S.M.C., and Surani, M.A. (2007). Germ cell specification in mice. *Science* 316, 394–396.
- Hayashi, K., Ohta, H., Kurimoto, K., Aramaki, S., and Saitou, M. (2011). Reconstitution of the mouse germ cell specification pathway in culture by pluripotent stem cells. *Cell* 146, 519–532.
- Heard, E., and Martienssen, R.A. (2014). Transgenerational epigenetic inheritance: myths and mechanisms. *Cell* 157, 95–109.
- Imamura, M., Hikabe, O., Lin, Z.Y., and Okano, H. (2014). Generation of germ cells in vitro in the era of induced pluripotent stem cells. *Mol. Reprod. Dev.* 81, 2–19.
- Irie, N., Tang, W.W., and Azim Surani, M. (2014). Germ cell specification and pluripotency in mammals: a perspective from early embryogenesis. *Reprod. Med. Biol.* 13, 203–215.
- Julaton, V.T., and Reijo Pera, R.A. (2011). NANOS3 function in human germ cell development. *Hum. Mol. Genet.* 20, 2238–2250.
- Kanai-Azuma, M., Kanai, Y., Gad, J.M., Tajima, Y., Taya, C., Kurohmaru, M., Sanai, Y., Yonekawa, H., Yazaki, K., Tam, P.P., and Hayashi, Y. (2002). Deletion of definitive gut endoderm in Sox17-null mutant mice. *Development* 129, 2367–2379.
- Kee, K., Angeles, V.T., Flores, M., Nguyen, H.N., and Reijo Pera, R.A. (2009). Human DAZL, DAZ and BOULE genes modulate primordial germ-cell and haploid gamete formation. *Nature* 462, 222–225.
- Kim, S., Günesdogan, U., Zyllicz, J.J., Hackett, J.A., Cougot, D., Bao, S., Lee, C., Dietmann, S., Allen, G.E., Sengupta, R., and Surani, M.A. (2014). PRMT5 Protects Genomic Integrity during Global DNA Demethylation in Primordial Germ Cells and Preimplantation Embryos. *Mol. Cell* 56, 564–579.
- Kurimoto, K., Yabuta, Y., Ohinata, Y., Shigeta, M., Yamanaka, K., and Saitou, M. (2008). Complex genome-wide transcription dynamics orchestrated by Blimp1 for the specification of the germ cell lineage in mice. *Genes Dev.* 22, 1617–1635.
- Lawson, K.A., Dunn, N.R., Roelen, B.A., Zeinstra, L.M., Davis, A.M., Wright, C.V., Korving, J.P., and Hogan, B.L. (1999). Bmp4 is required for the generation of primordial germ cells in the mouse embryo. *Genes Dev.* 13, 424–436.
- Leitch, H.G., Tang, W.W., and Surani, M.A. (2013). Primordial germ-cell development and epigenetic reprogramming in mammals. *Curr. Top. Dev. Biol.* 104, 149–187.
- Lin, I.Y., Chiu, F.L., Yeang, C.H., Chen, H.F., Chuang, C.Y., Yang, S.Y., Hou, P.S., Sintupisut, N., Ho, H.N., Kuo, H.C., and Lin, K.I. (2014). Suppression of the SOX2 neural effector gene by PRDM1 promotes human germ cell fate in embryonic stem cells. *Stem Cell Reports* 2, 189–204.
- Liu, X., Gao, Q., Li, P., Zhao, Q., Zhang, J., Li, J., Koseki, H., and Wong, J. (2013). UHRF1 targets DNMT1 for DNA methylation through cooperative binding of hemi-methylated DNA and methylated H3K9. *Nat. Commun.* 4, 1563.
- Looijenga, L.H., Stoop, H., and Biermann, K. (2014). Testicular cancer: biology and biomarkers. *Virchows Arch.* 464, 301–313.
- Ma, Z., Swigut, T., Valouev, A., Rada-Iglesias, A., and Wysocka, J. (2011). Sequence-specific regulator Prdm14 safeguards mouse ESCs from entering extraembryonic endoderm fates. *Nat. Struct. Mol. Biol.* 18, 120–127.
- Magnúsdóttir, E., and Surani, M.A. (2014). How to make a primordial germ cell. *Development* 141, 245–252.
- Magnúsdóttir, E., Dietmann, S., Murakami, K., Günesdogan, U., Tang, F., Bao, S., Diamanti, E., Lao, K., Gottgens, B., and Azim Surani, M. (2013). A tripartite transcription factor network regulates primordial germ cell specification in mice. *Nat. Cell Biol.* 15, 905–915.
- Malavasi, F., Deaglio, S., Funaro, A., Ferrero, E., Horenstein, A.L., Ortolan, E., Vaisitti, T., and Aydin, S. (2008). Evolution and function of the ADP ribosyl cyclase/CD38 gene family in physiology and pathology. *Physiol. Rev.* 88, 841–886.

- Mendjan, S., Mascetti, V.L., Ortmann, D., Ortiz, M., Karjosukarso, D.W., Ng, Y., Moreau, T., and Pedersen, R.A. (2014). NANOG and CDX2 pattern distinct subtypes of human mesoderm during exit from pluripotency. *Cell Stem Cell* 15, 310–325.
- Nakajima-Takagi, Y., Osawa, M., Oshima, M., Takagi, H., Miyagi, S., Endoh, M., Endo, T.A., Takayama, N., Eto, K., Toyoda, T., et al. (2013). Role of SOX17 in hematopoietic development from human embryonic stem cells. *Blood* 121, 447–458.
- Nakaki, F., Hayashi, K., Ohta, H., Kurimoto, K., Yabuta, Y., and Saitou, M. (2013). Induction of mouse germ-cell fate by transcription factors in vitro. *Nature* 501, 222–226.
- Nichols, J., and Smith, A. (2009). Naive and primed pluripotent states. *Cell Stem Cell* 4, 487–492.
- Ohinata, Y., Payer, B., O'Carroll, D., Ancelin, K., Ono, Y., Sano, M., Barton, S.C., Obukhanych, T., Nussenzweig, M., Tarakhovskiy, A., et al. (2005). Blimp1 is a critical determinant of the germ cell lineage in mice. *Nature* 436, 207–213.
- Pallesen, G., and Hamilton-Dutoit, S.J. (1988). Ki-1 (CD30) antigen is regularly expressed by tumor cells of embryonal carcinoma. *Am. J. Pathol.* 133, 446–450.
- Pera, R.A. (2013). Status of human germ cell differentiation from pluripotent stem cells. *Reprod. Fertil. Dev.* 25, 396–404.
- Saitou, M., Barton, S.C., and Surani, M.A. (2002). A molecular programme for the specification of germ cell fate in mice. *Nature* 418, 293–300.
- Schafer, S., Anschlag, J., Nettersheim, D., Haas, N., Pawig, L., and Schorle, H. (2011). The role of BLIMP1 and its putative downstream target TFAP2C in germ cell development and germ cell tumours. *Int. J. Androl.* 34, e152–e158, discussion e158–e159.
- Shoji, M., Tanaka, T., Hosokawa, M., Reuter, M., Stark, A., Kato, Y., Kondoh, G., Okawa, K., Chujo, T., Suzuki, T., et al. (2009). The TDRD9-MIWI2 complex is essential for piRNA-mediated retrotransposon silencing in the mouse male germline. *Dev. Cell* 17, 775–787.
- Skakkebaek, N.E. (1972). Possible carcinoma-in-situ of the testis. *Lancet* 2, 516–517.
- Vincent, S.D., Dunn, N.R., Sciammas, R., Shapiro-Shalef, M., Davis, M.M., Calame, K., Bikoff, E.K., and Robertson, E.J. (2005). The zinc finger transcriptional repressor Blimp1/Prdm1 is dispensable for early axis formation but is required for specification of primordial germ cells in the mouse. *Development* 132, 1315–1325.
- Watanabe, K., Ueno, M., Kamiya, D., Nishiyama, A., Matsumura, M., Wataya, T., Takahashi, J.B., Nishikawa, S., Nishikawa, S., Muguruma, K., and Sasai, Y. (2007). A ROCK inhibitor permits survival of dissociated human embryonic stem cells. *Nat. Biotechnol.* 25, 681–686.
- Weber, S., Eckert, D., Nettersheim, D., Gillis, A.J., Schäfer, S., Kuckenberger, P., Ehlermann, J., Werling, U., Biermann, K., Looijenga, L.H., and Schorle, H. (2010). Critical function of AP-2 gamma/TFAP2C in mouse embryonic germ cell maintenance. *Biol. Reprod.* 82, 214–223.
- Yamaji, M., Seki, Y., Kurimoto, K., Yabuta, Y., Yuasa, M., Shigeta, M., Yamana, K., Ohinata, Y., and Saitou, M. (2008). Critical function of Prdm14 for the establishment of the germ cell lineage in mice. *Nat. Genet.* 40, 1016–1022.
- Yamaji, M., Ueda, J., Hayashi, K., Ohta, H., Yabuta, Y., Kurimoto, K., Nakato, R., Yamada, Y., Shirahige, K., and Saitou, M. (2013). PRDM14 ensures naive pluripotency through dual regulation of signaling and epigenetic pathways in mouse embryonic stem cells. *Cell Stem Cell* 12, 368–382.
- Ying, Q.-L., Wray, J., Nichols, J., Battle-Morera, L., Doble, B., Woodgett, J., Cohen, P., and Smith, A. (2008). The ground state of embryonic stem cell self-renewal. *Nature* 453, 519–523.
- Yu, P., Pan, G., Yu, J., and Thomson, J.A. (2011). FGF2 sustains NANOG and switches the outcome of BMP4-induced human embryonic stem cell differentiation. *Cell Stem Cell* 8, 326–334.