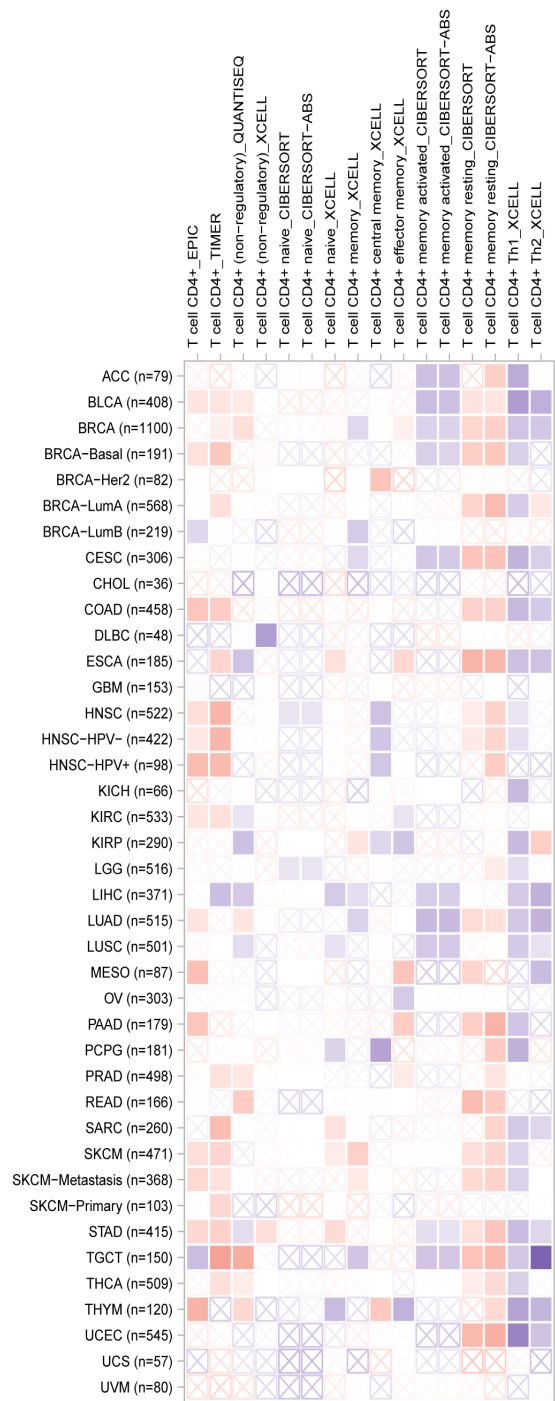
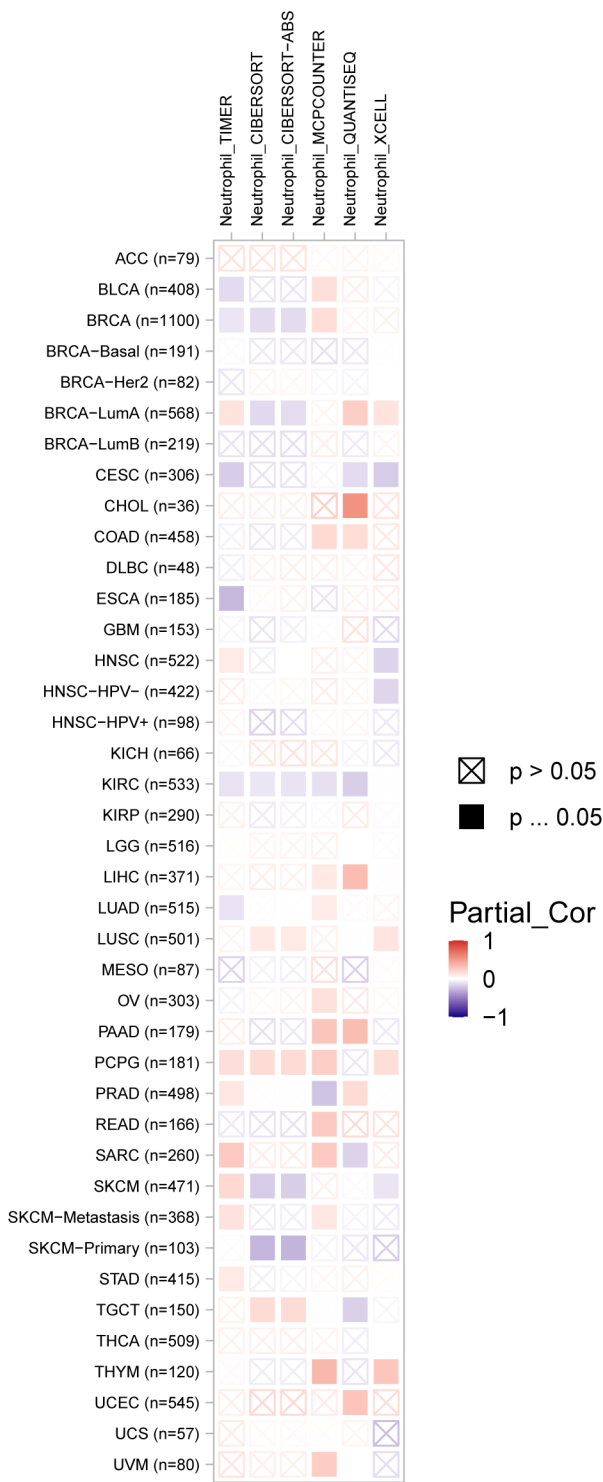
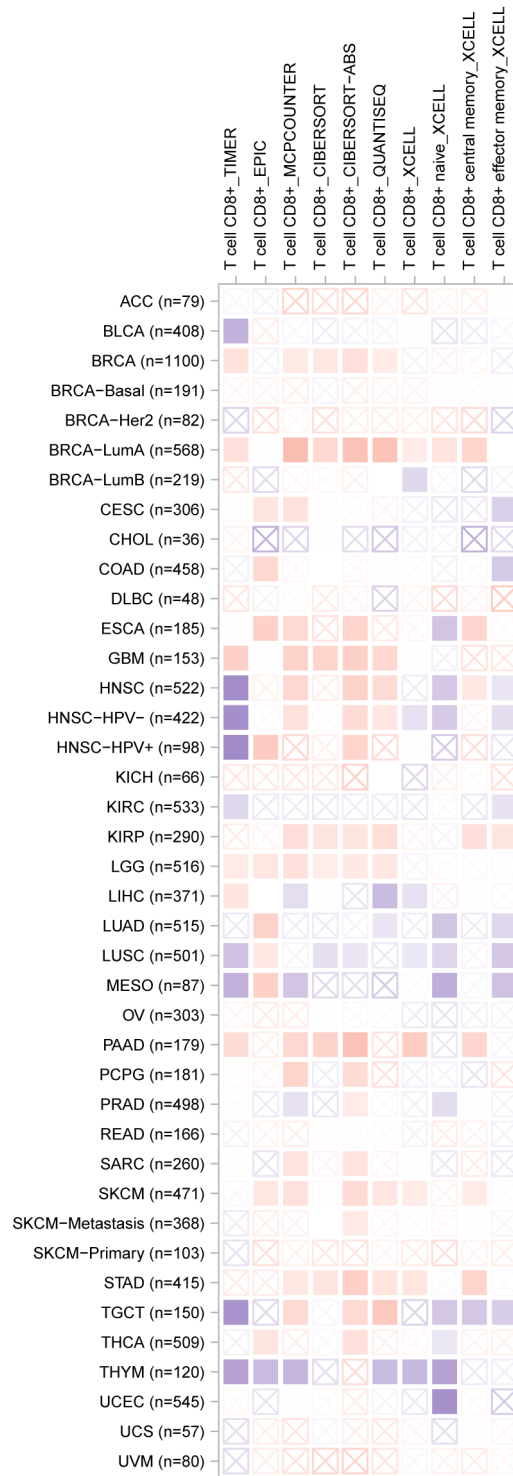


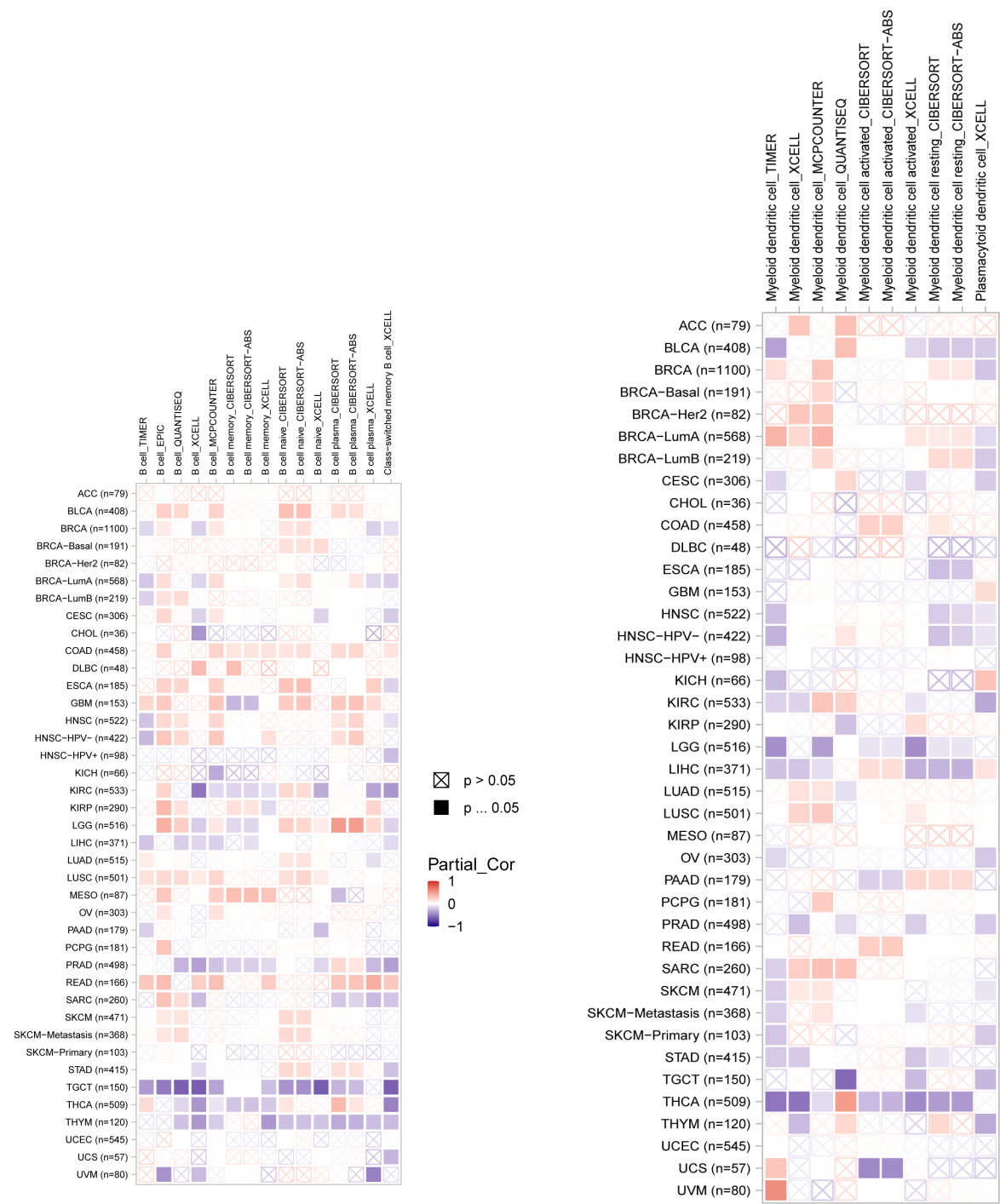
Relationship of ADH1C expression with immune infiltration level in diverse cancer types (TIMER 2.0).





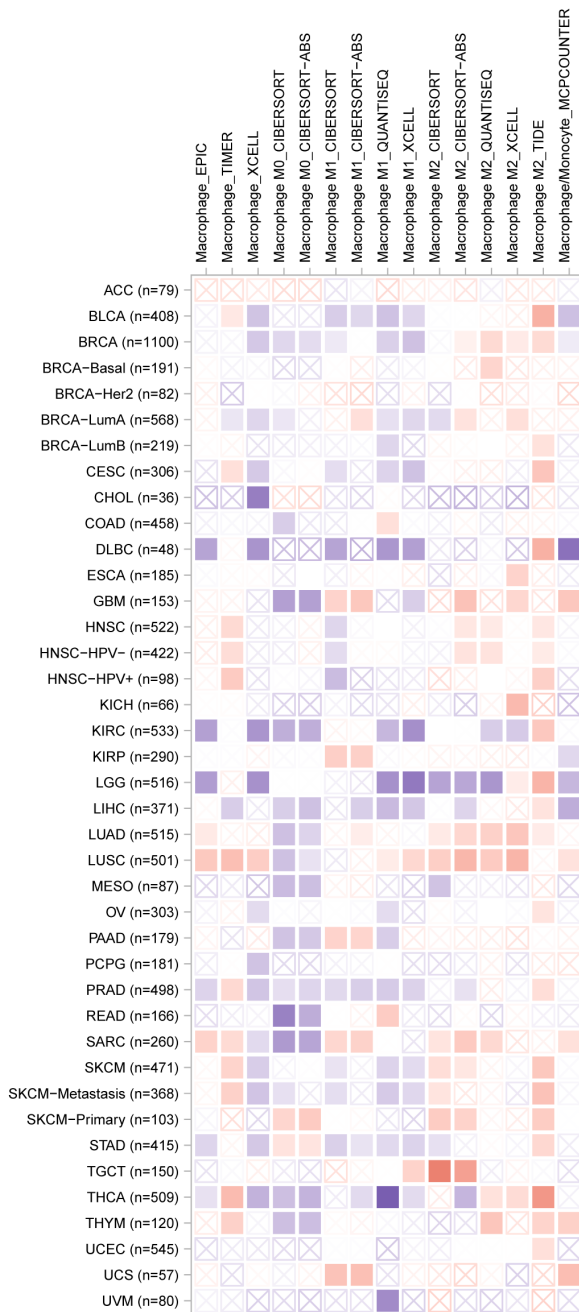
T cell CD8+ immune infiltration level.

Relationship of CA4 expression with immune infiltration level in diverse cancer types (TIMER 2.0).

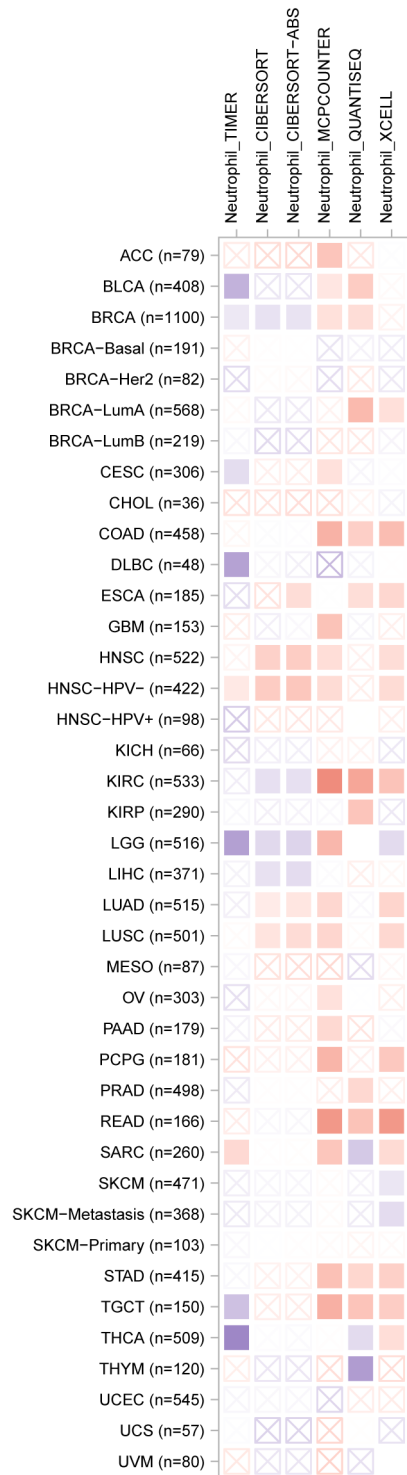


B cell immune infiltration level

DC cell immune infiltration level

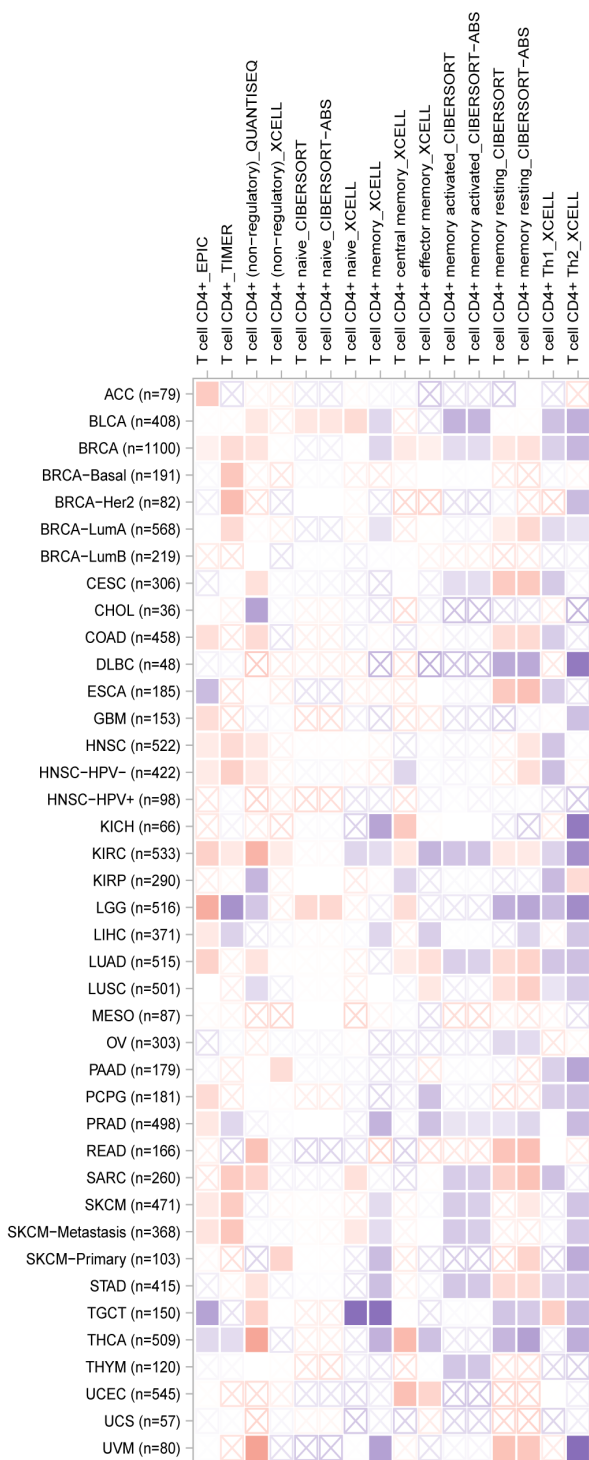


Macrophage immune infiltration level

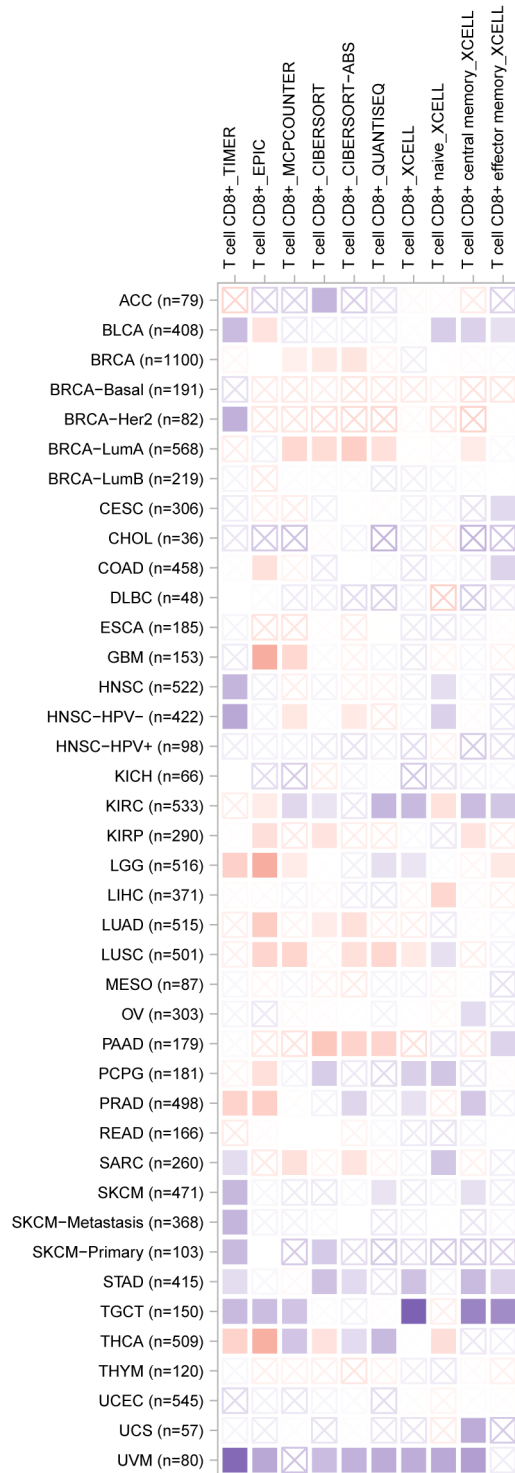


Neutrophil immune infiltration level



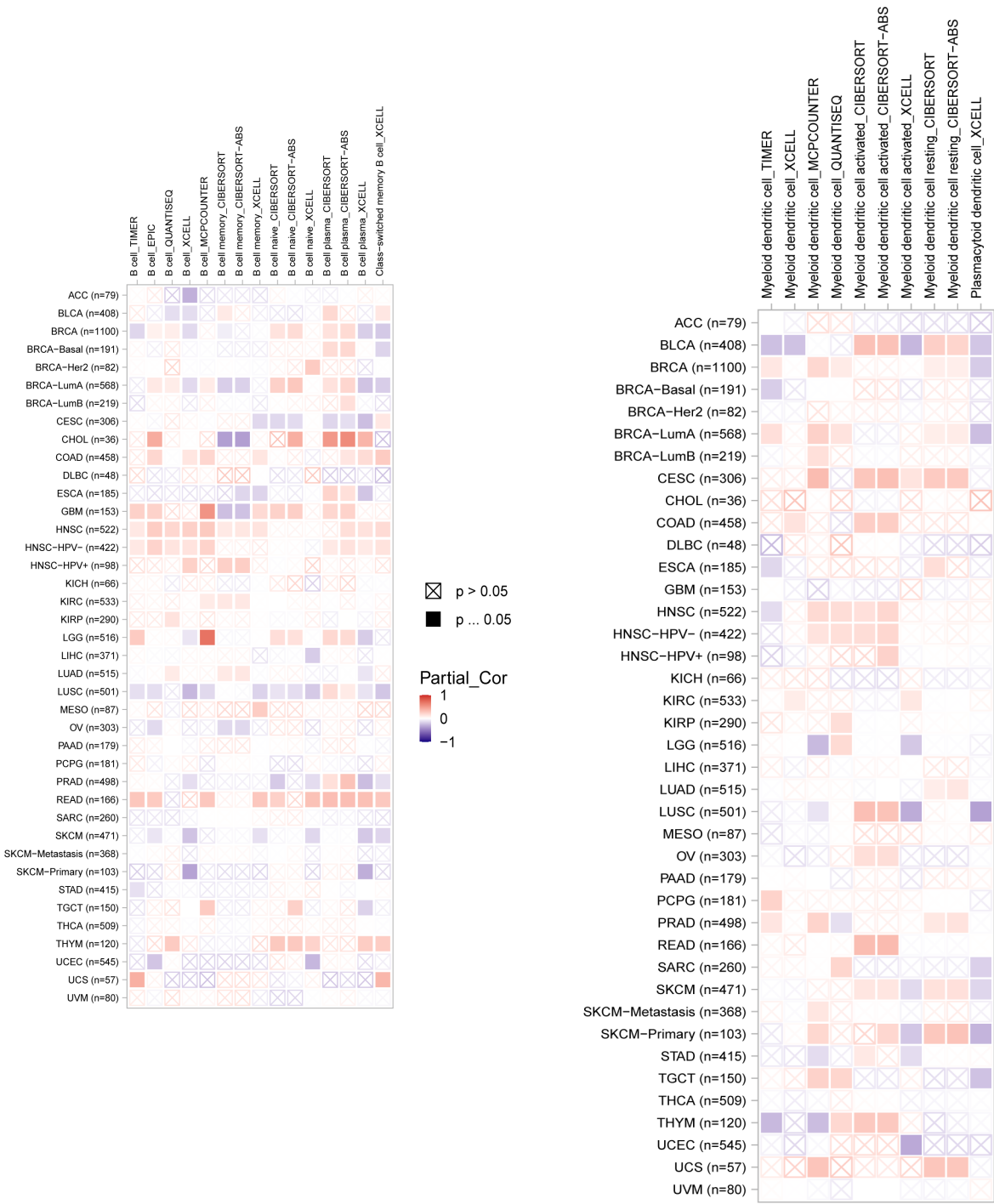


T cell CD4+ immune infiltration level



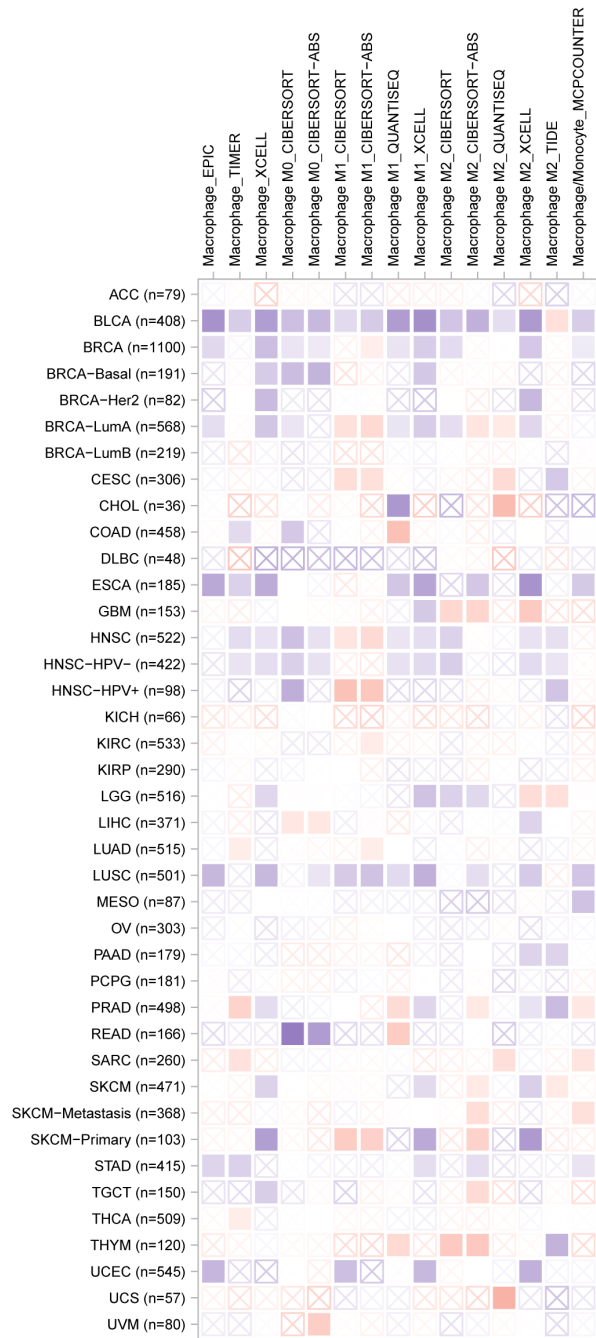
T cell CD8+ immune infiltration level

Relationship of CLCA4 expression with immune infiltration level in diverse cancer types (TIMER 2.0).

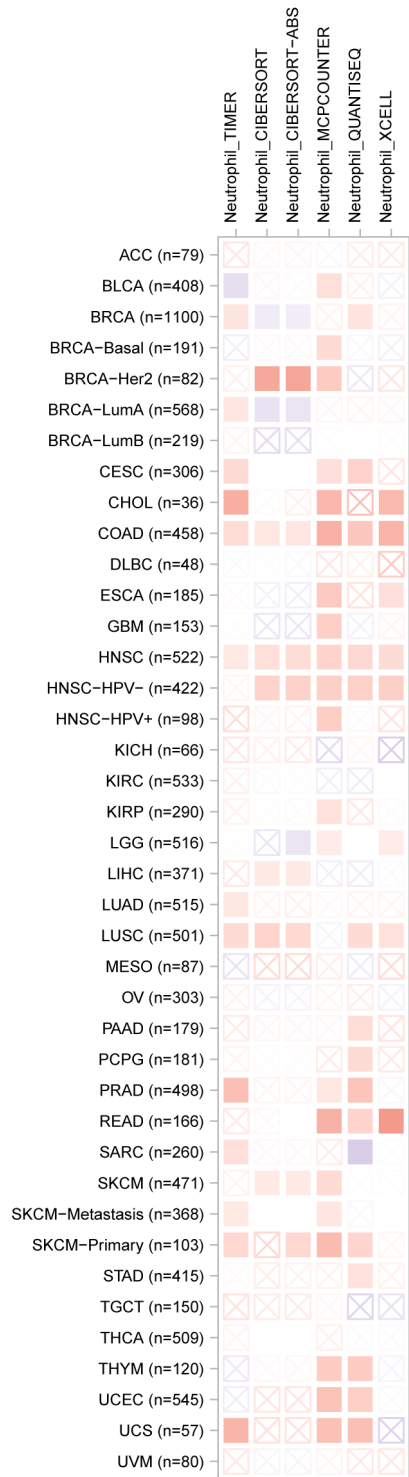


B cell immune infiltration level

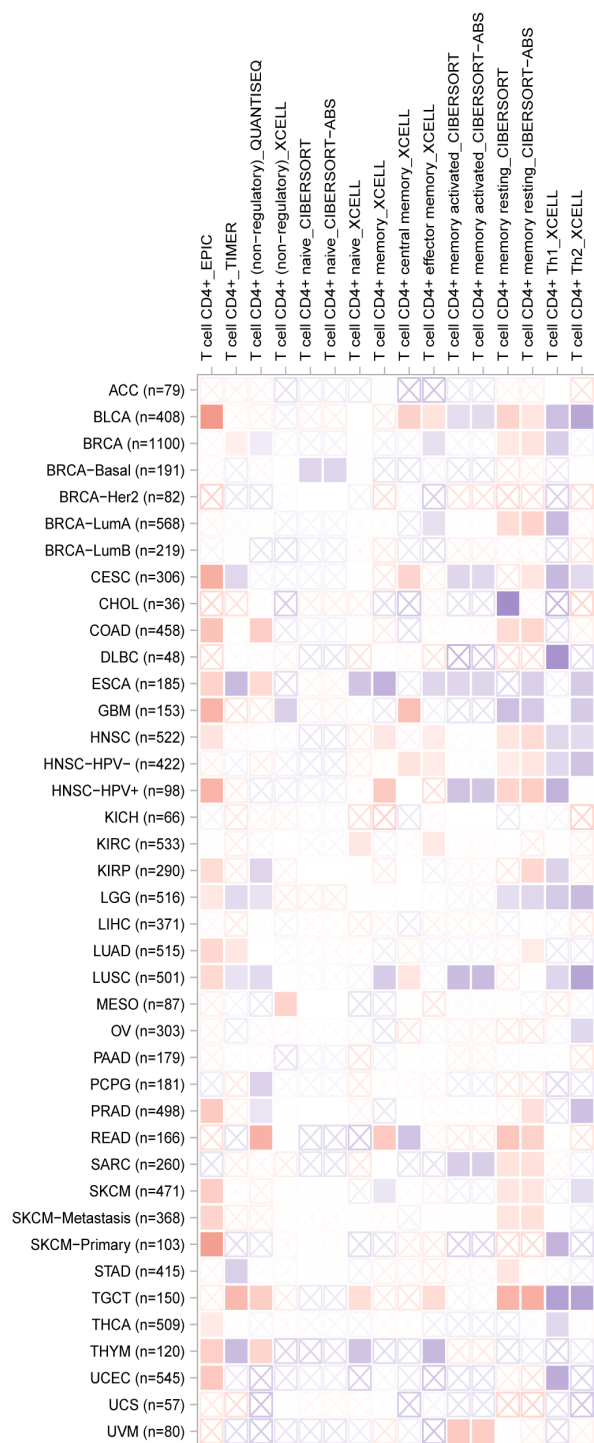
DC cell immune infiltration level



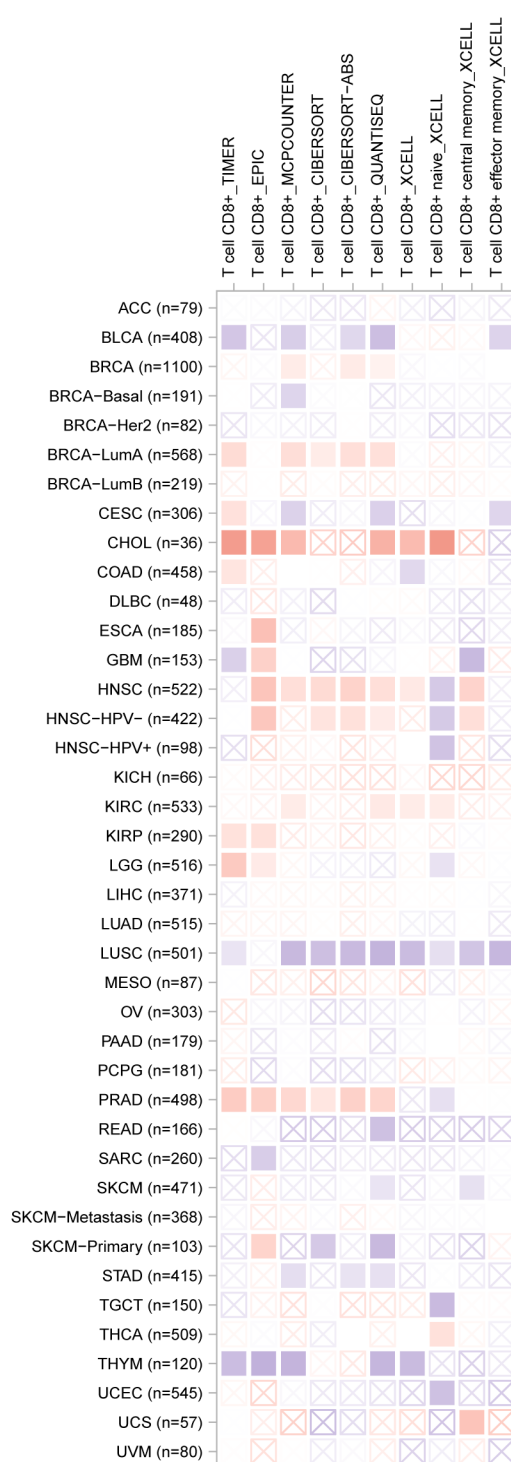
Macrophage immune infiltration level



Neutrophil immune infiltration level

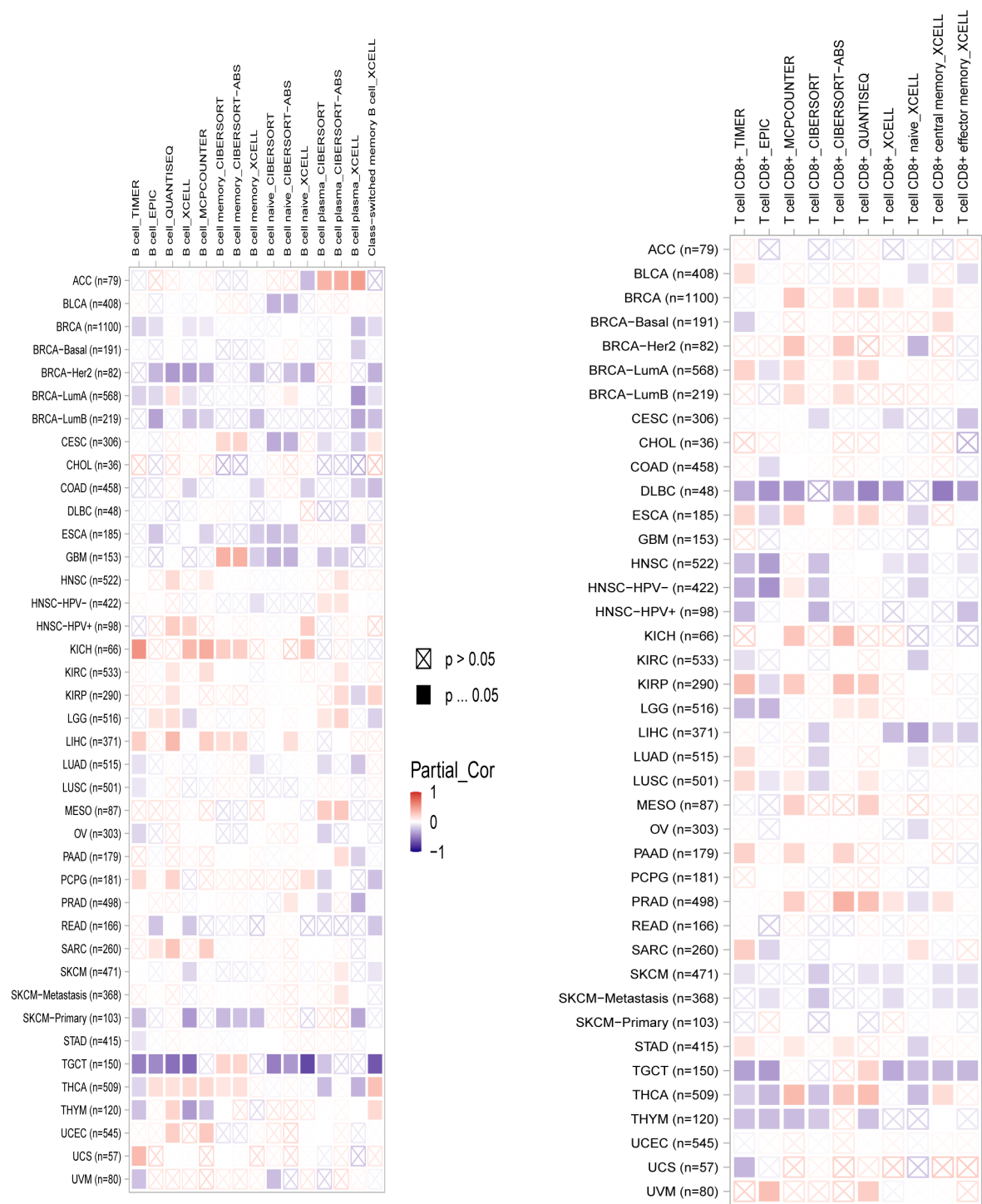


T cell CD4+ immune infiltration level



T cell CD8+ immune infiltration level

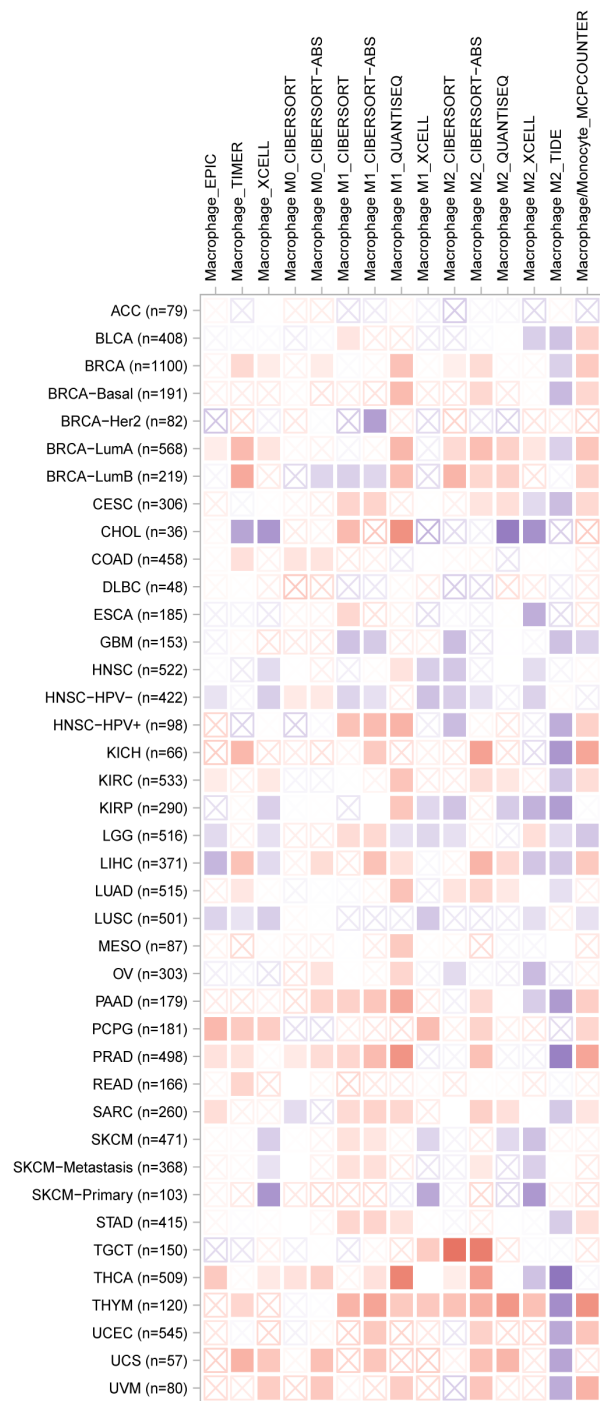
Relationship of CLDN1 expression with immune infiltration level in diverse cancer types (TIMER 2.0).



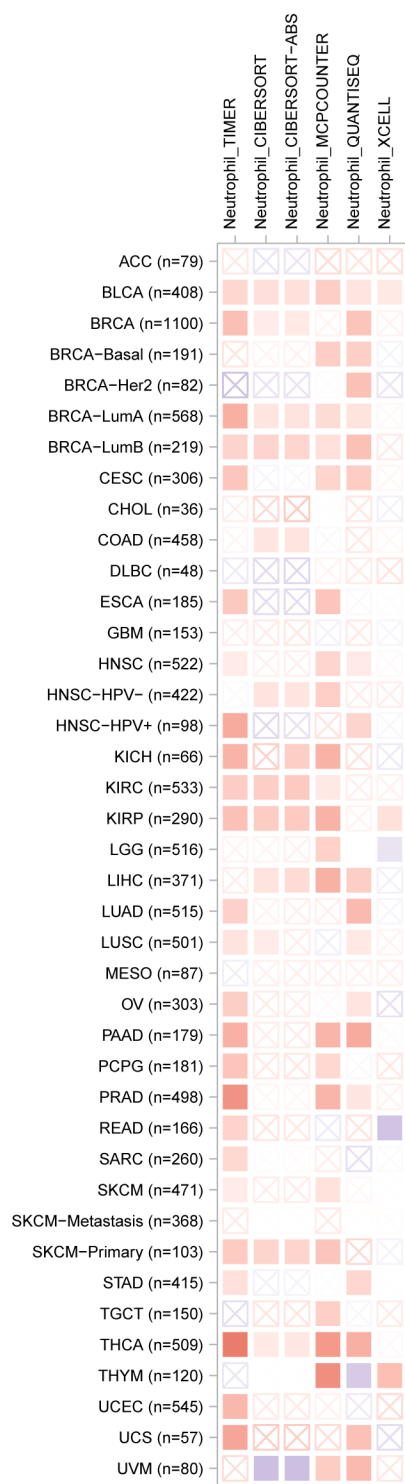
B cell immune infiltration level

DC cell immune infiltration level

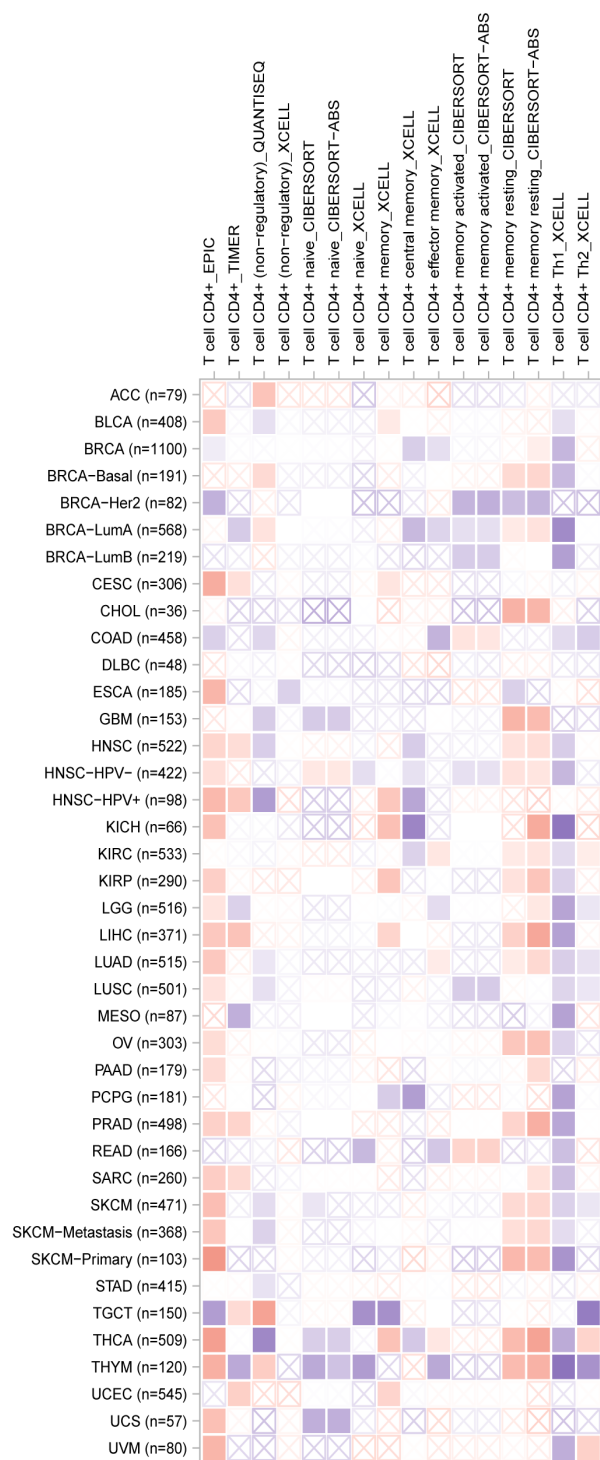




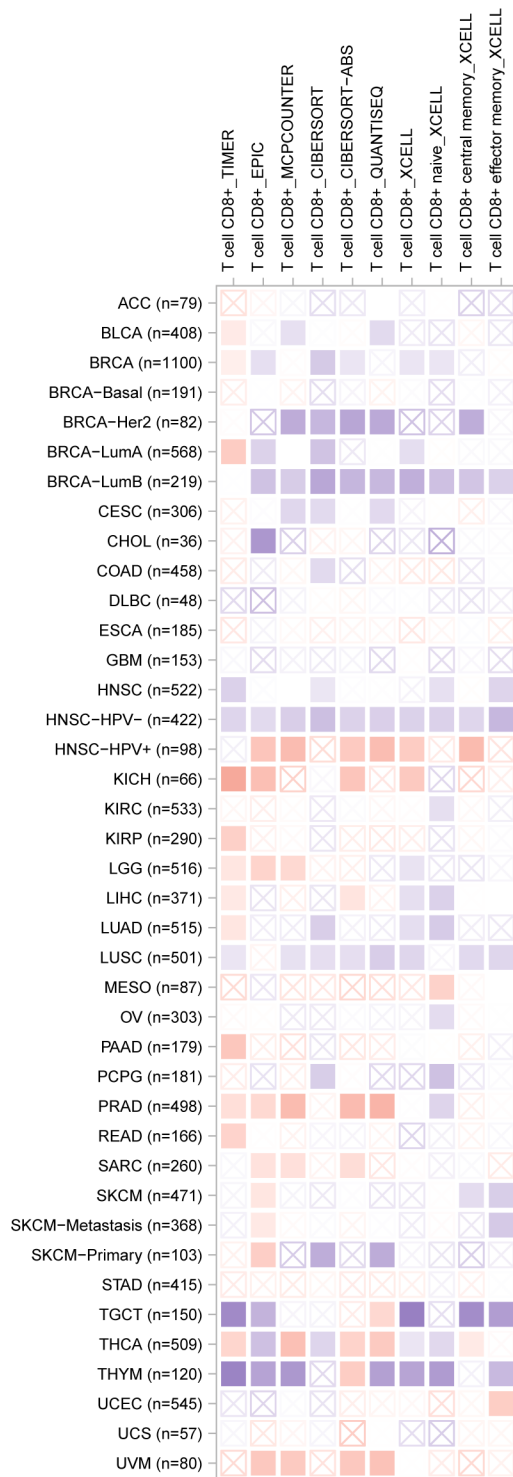
Macrophage immune infiltration level



Neutrophil immune infiltration level



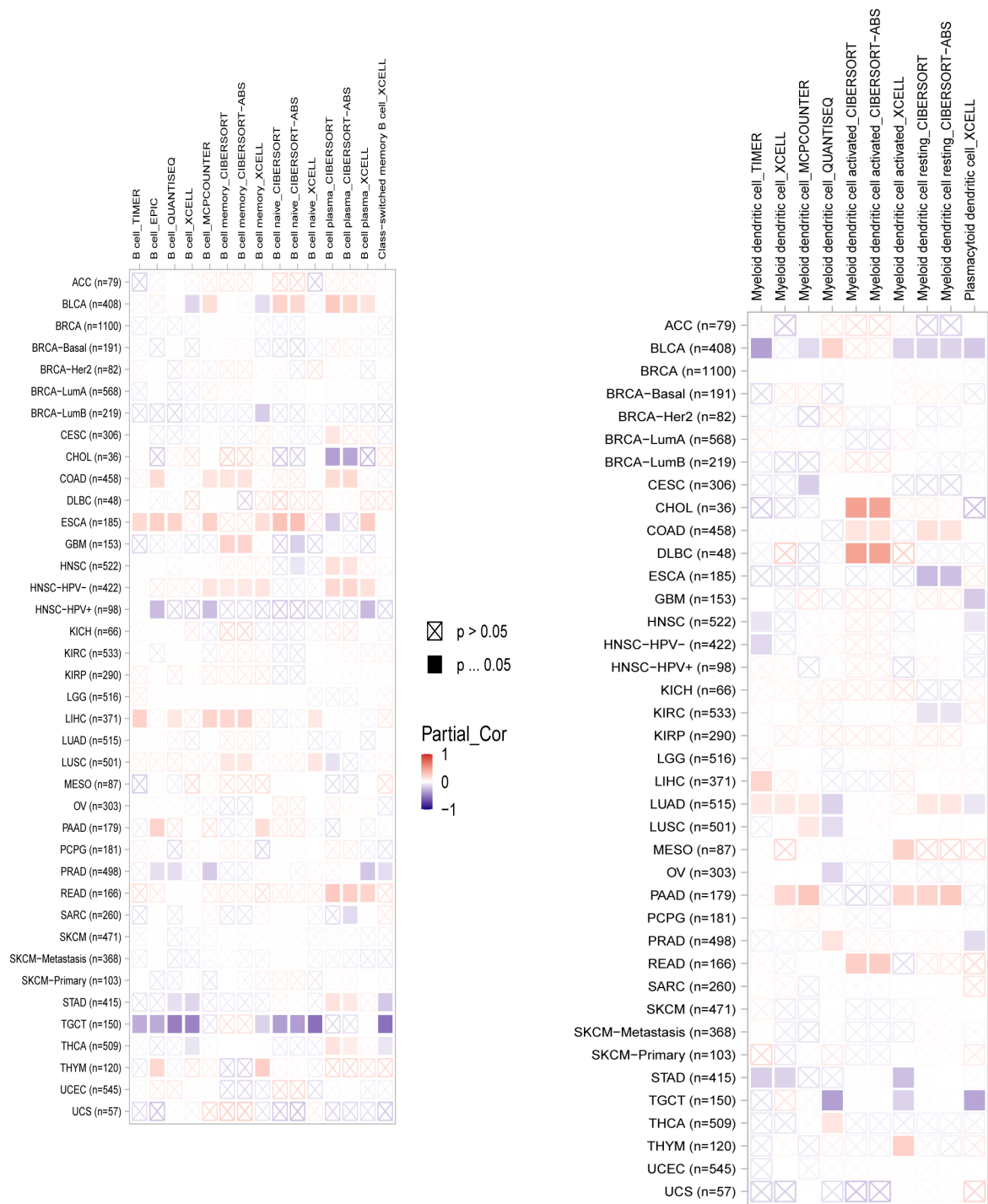
T cell CD4+ immune infiltration level



T cell CD8+ immune infiltration level

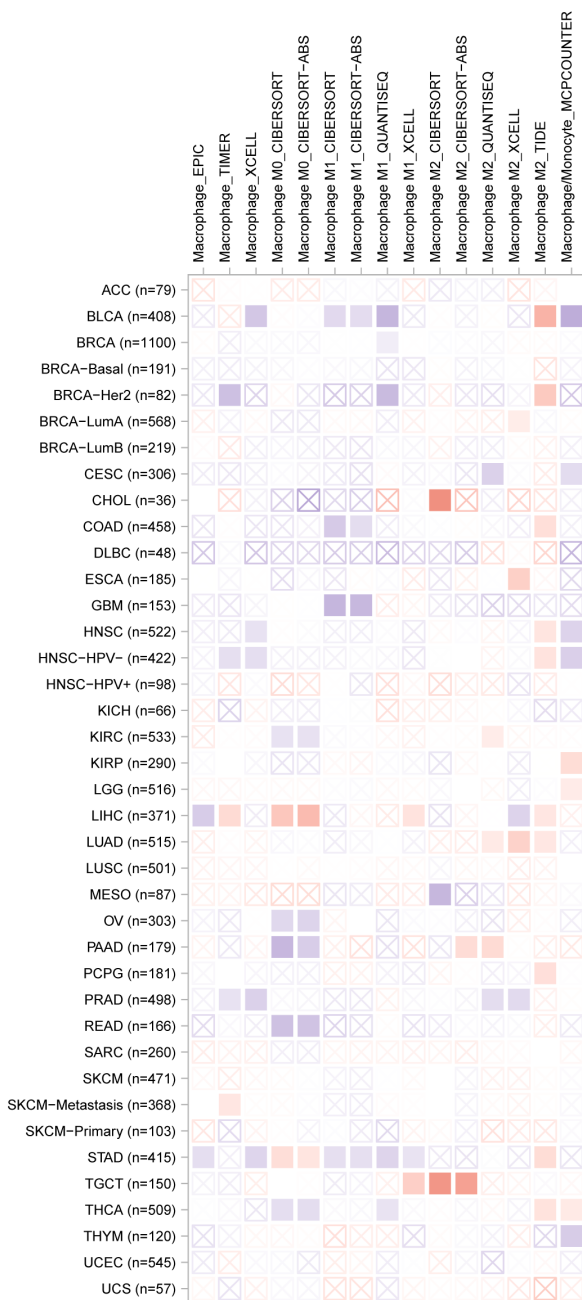


Relationship of GUCA2A expression with immune infiltration level in diverse cancer types (TIMER 2.0).

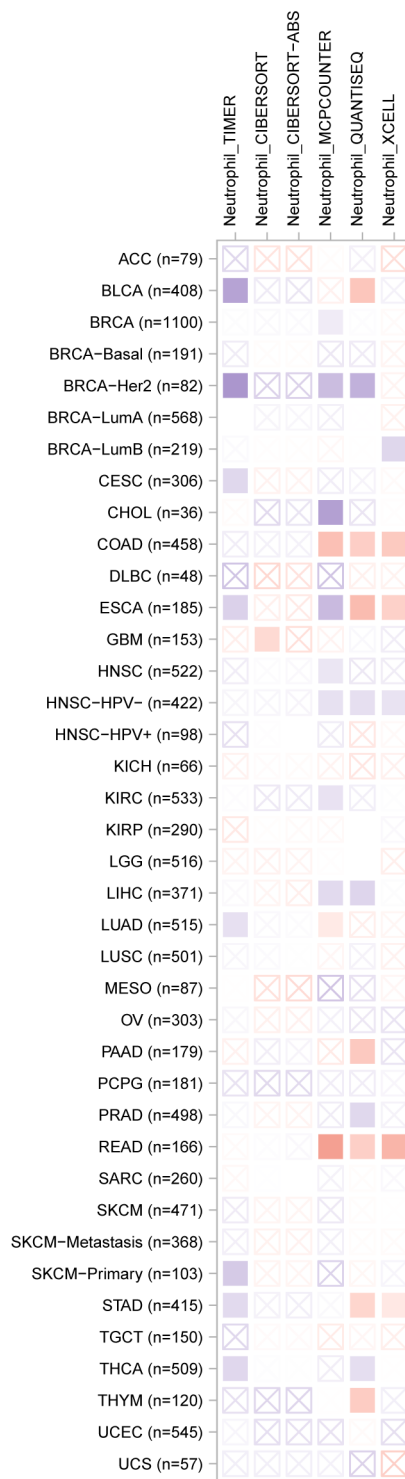


B cell immune infiltration level

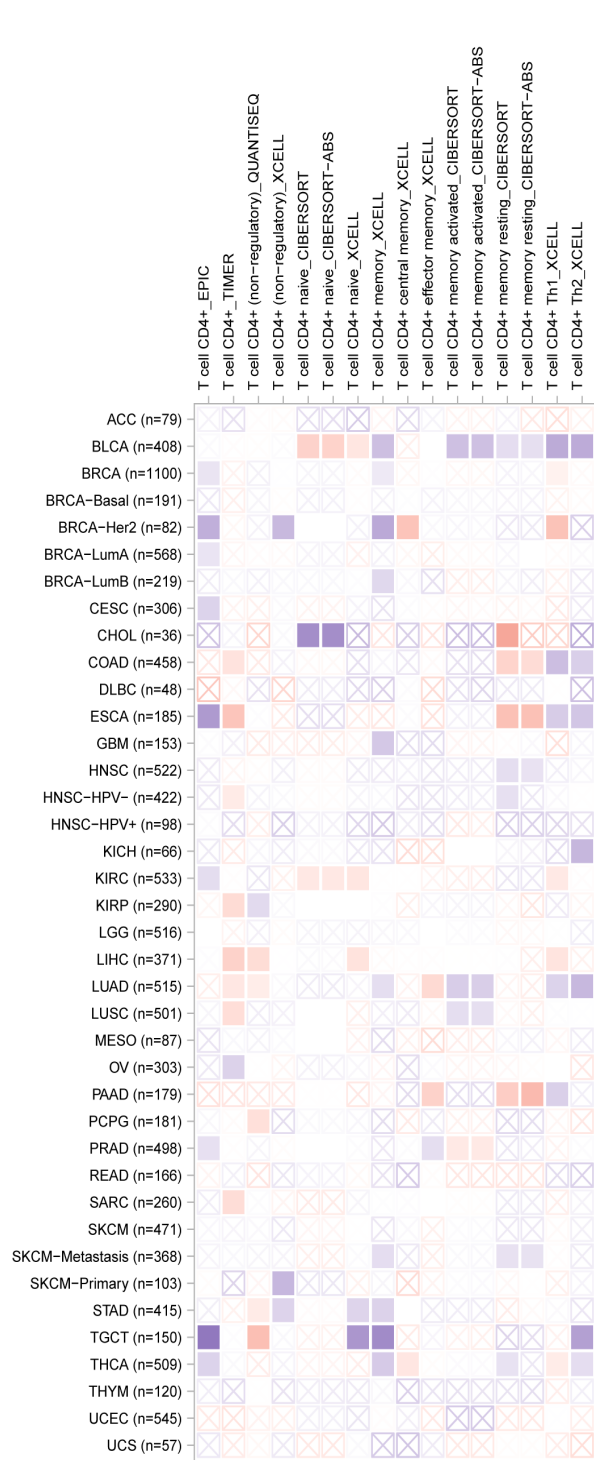
DC cell immune infiltration level



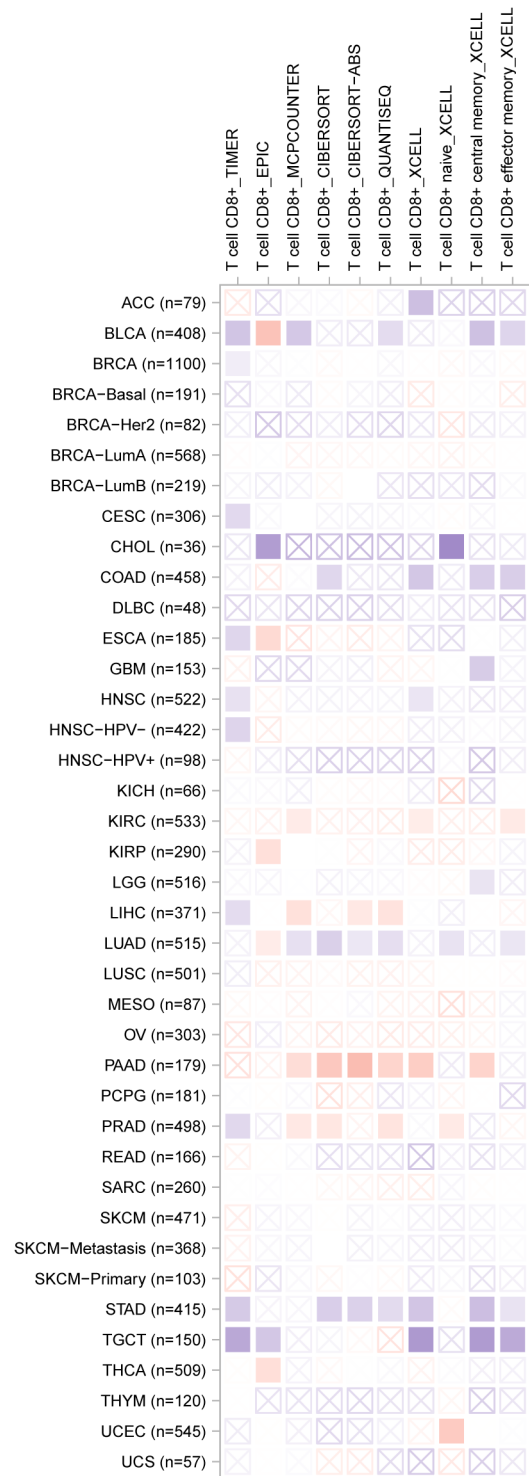
Macrophage immune infiltration level



Neutrophil immune infiltration level



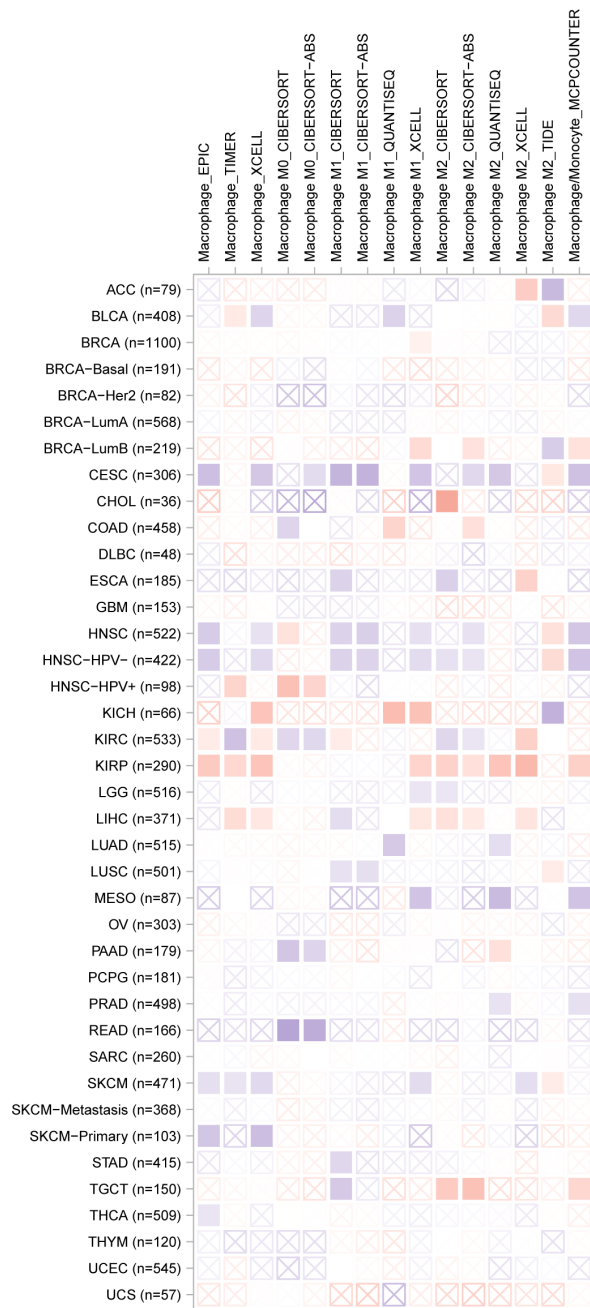
T cell CD4+ immune infiltration level



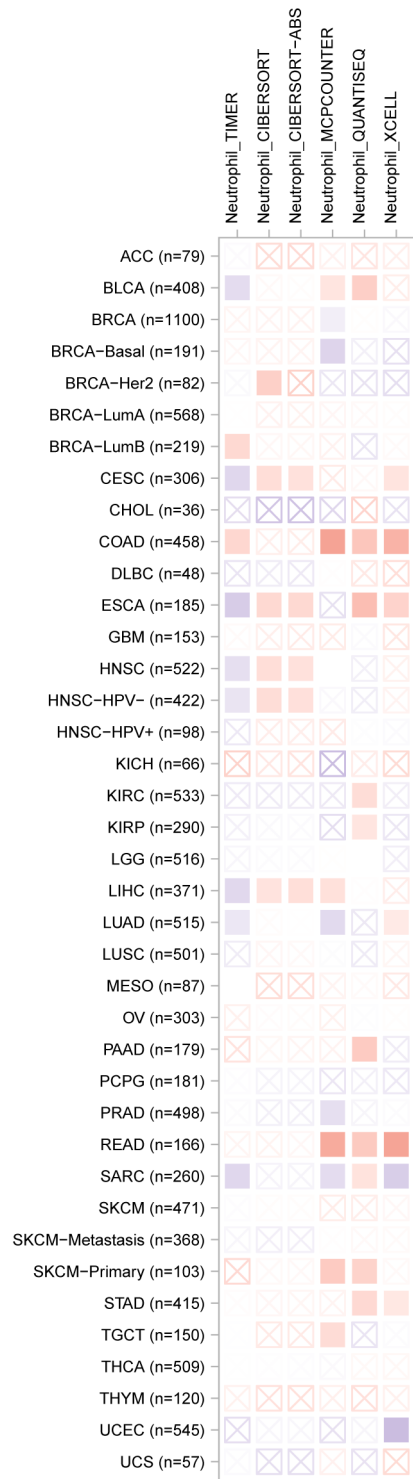
T cell CD8+ immune infiltration level

Relationship of GUCA2B expression with immune infiltration level in diverse cancer types (TIMER 2.0).



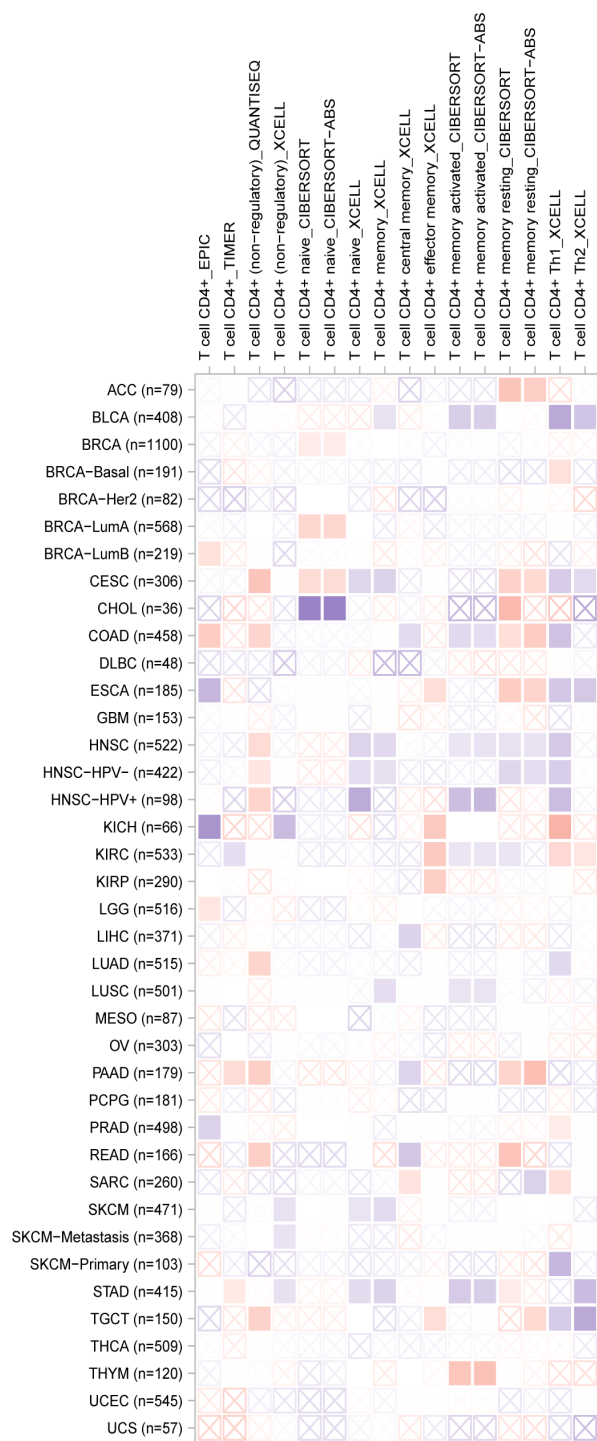


Macrophage immune infiltration level

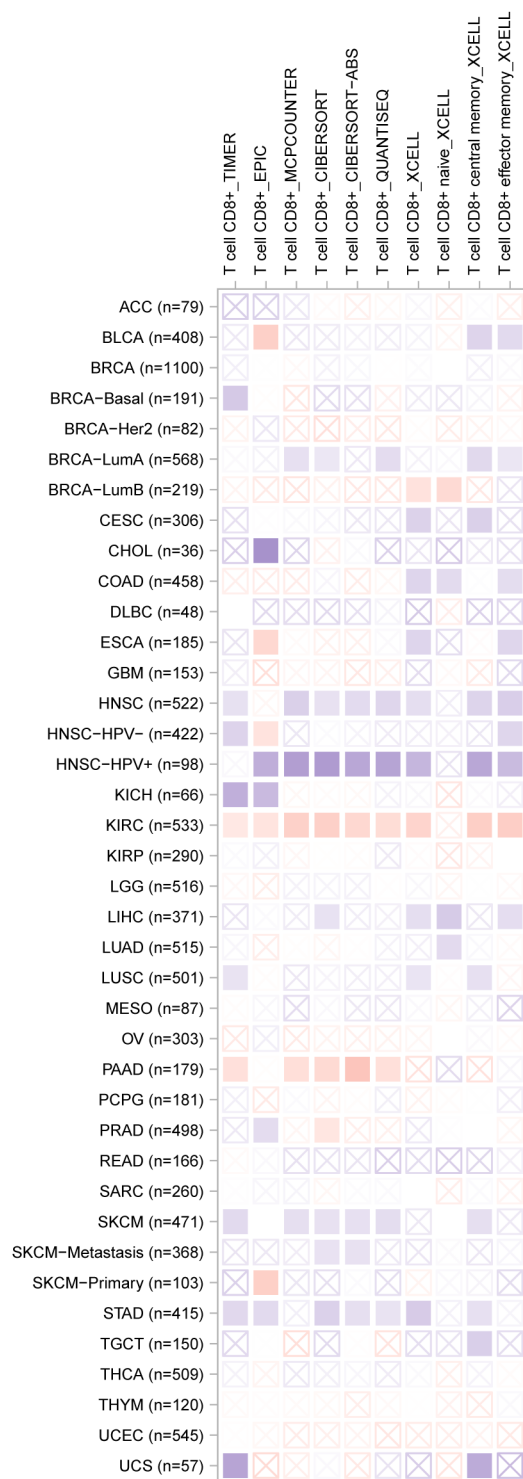


Neutrophil immune infiltration level



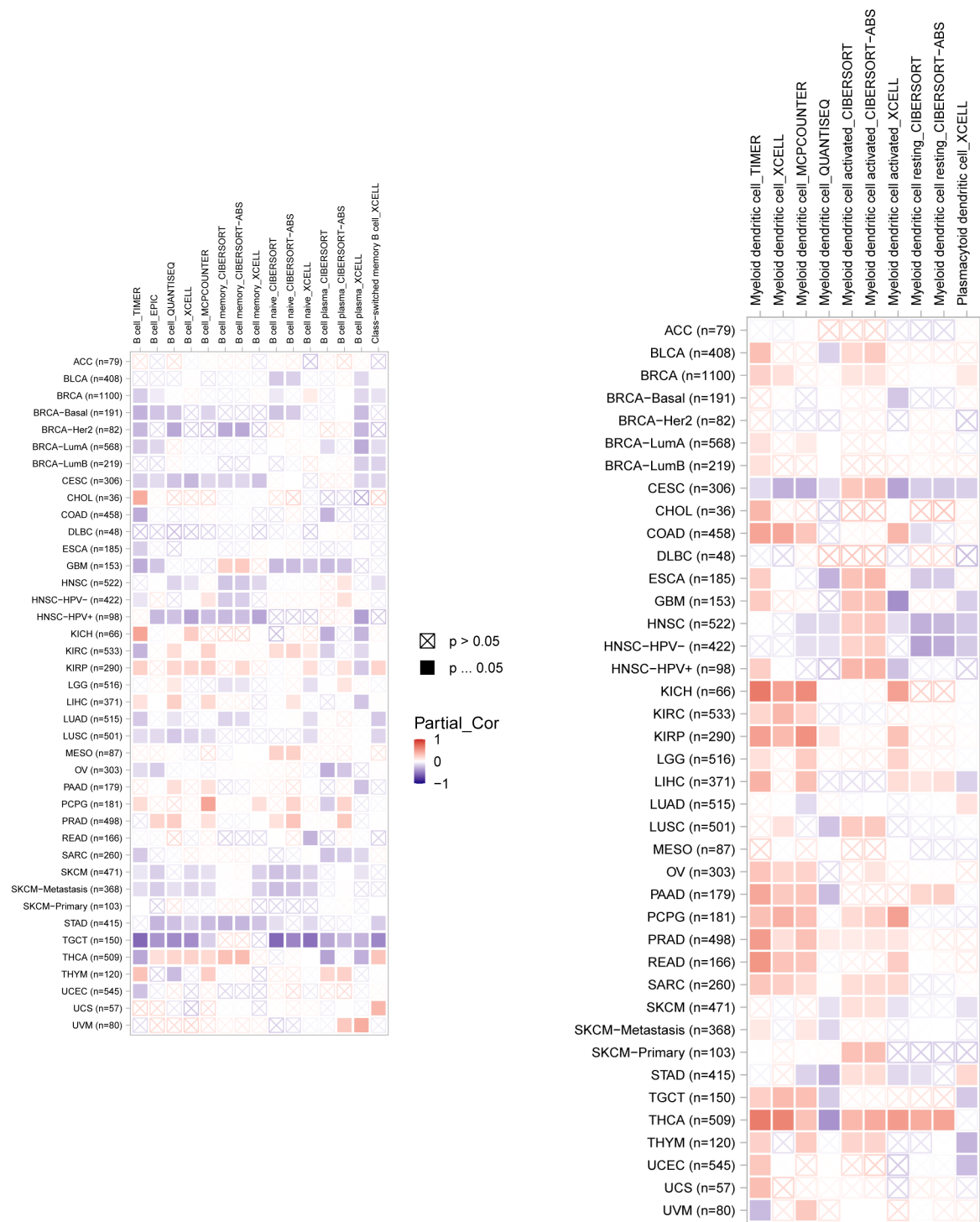


T cell CD4+ immune infiltration level



T cell CD8+ immune infiltration level

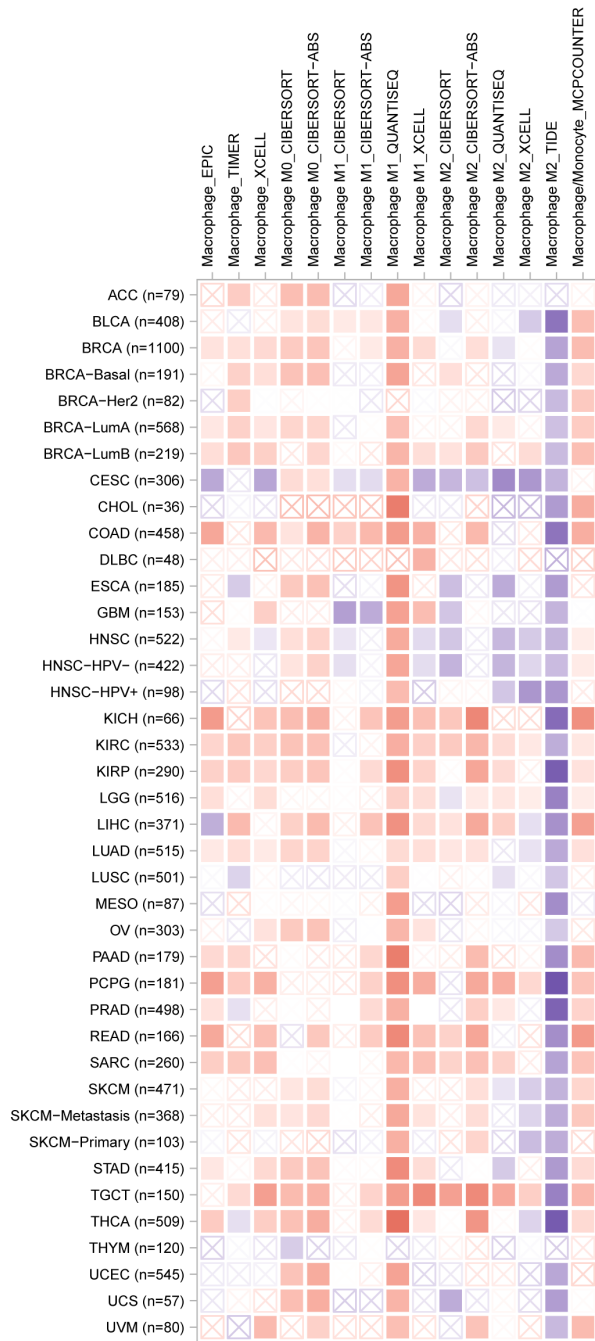
Relationship of CXCL8 expression with immune infiltration level in diverse cancer types (TIMER 2.0).



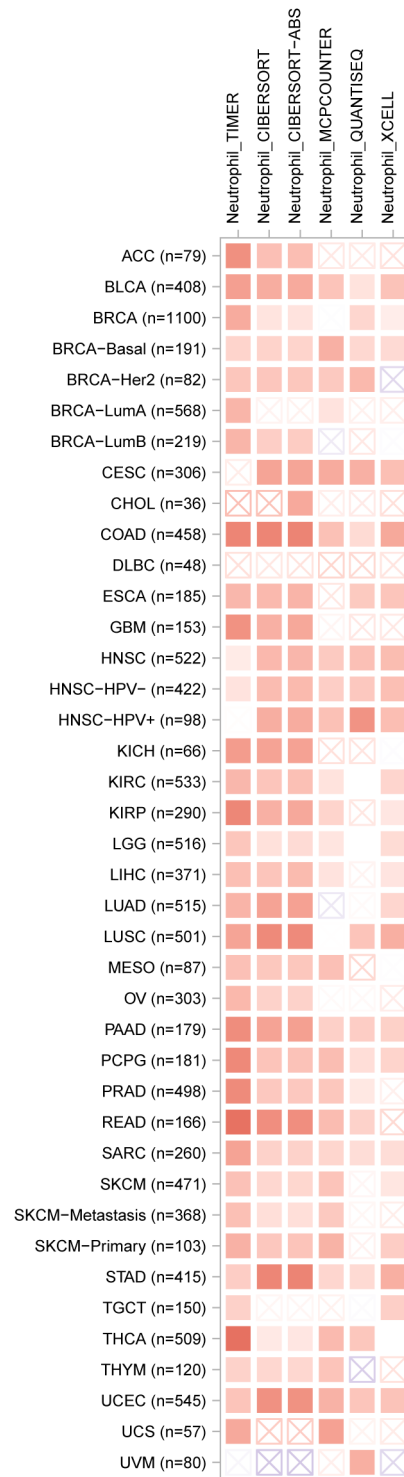
B cell immune infiltration level

DC cell immune infiltration level

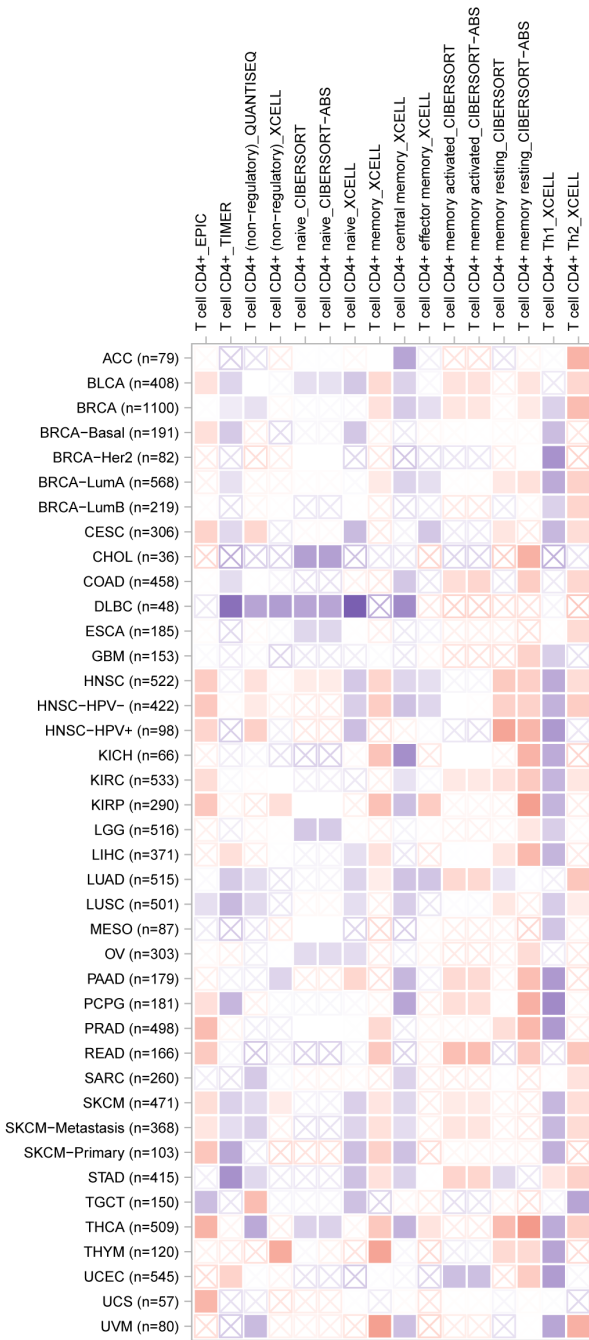




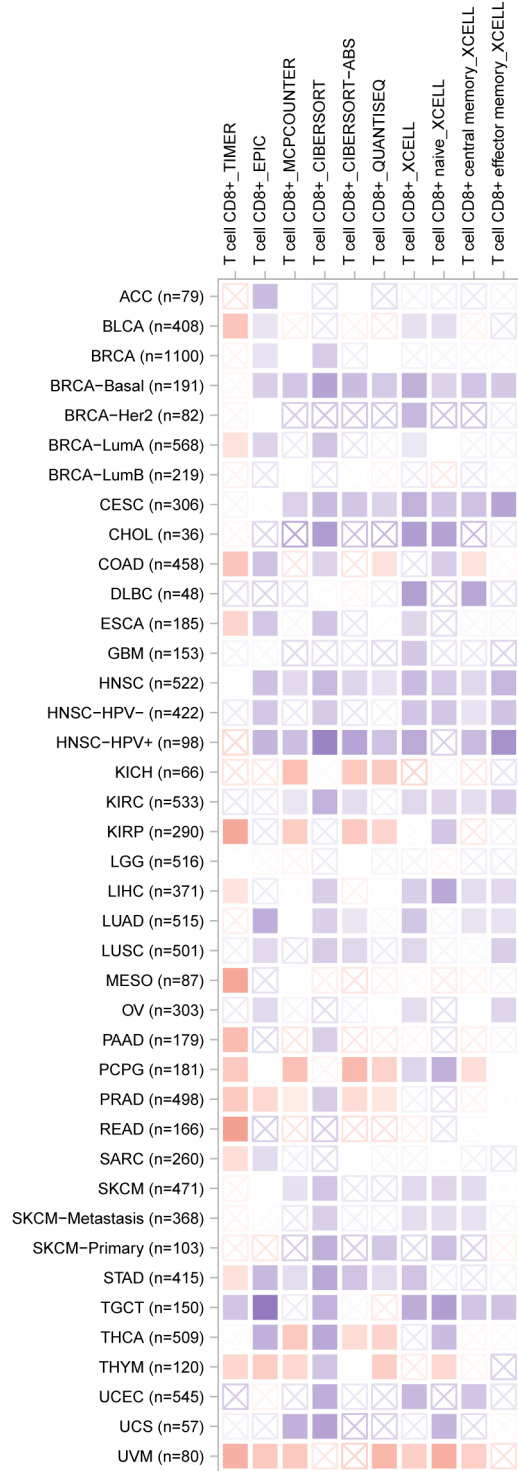
Macrophage immune infiltration level



Neutrophil immune infiltration level

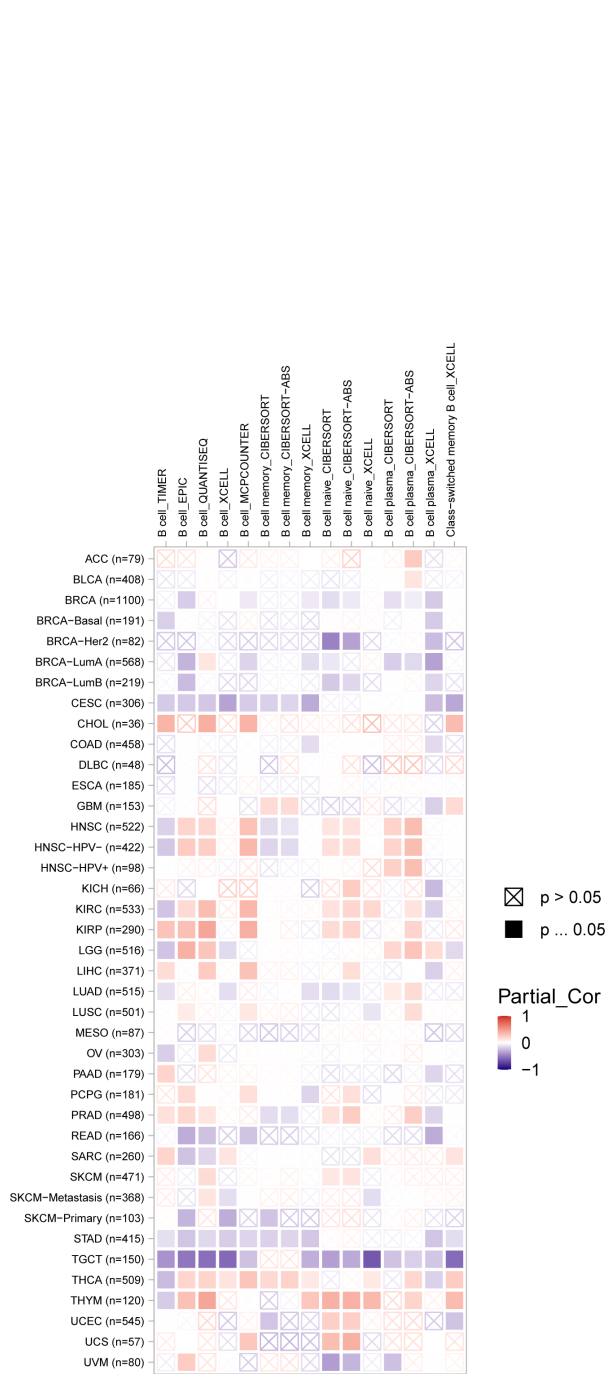


T cell CD4+ immune infiltration level

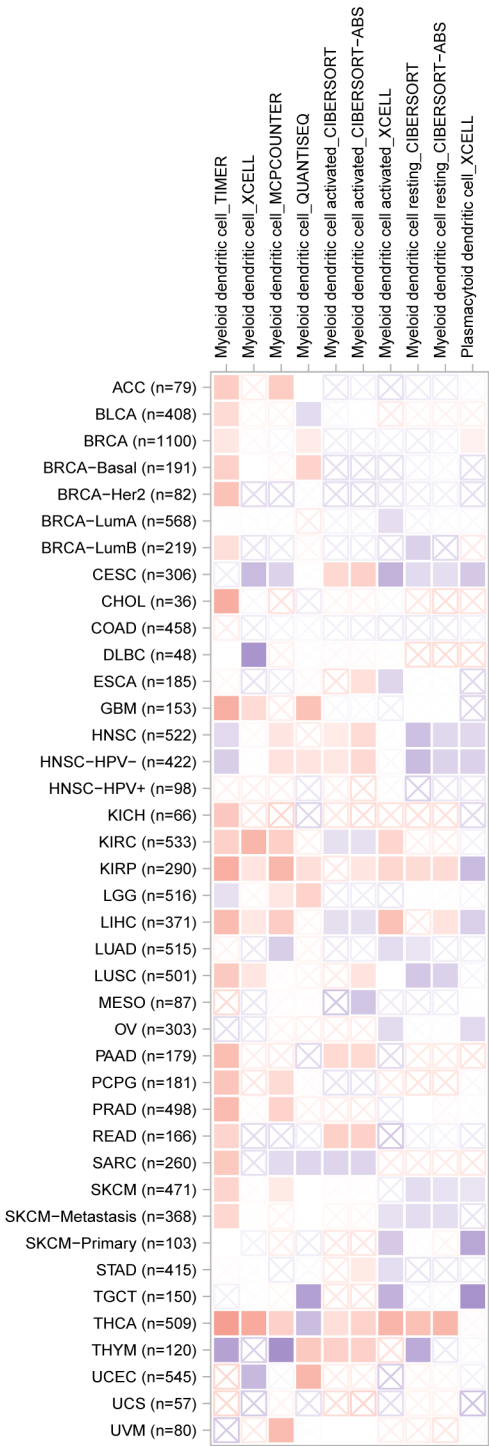


T cell CD8+ immune infiltration level

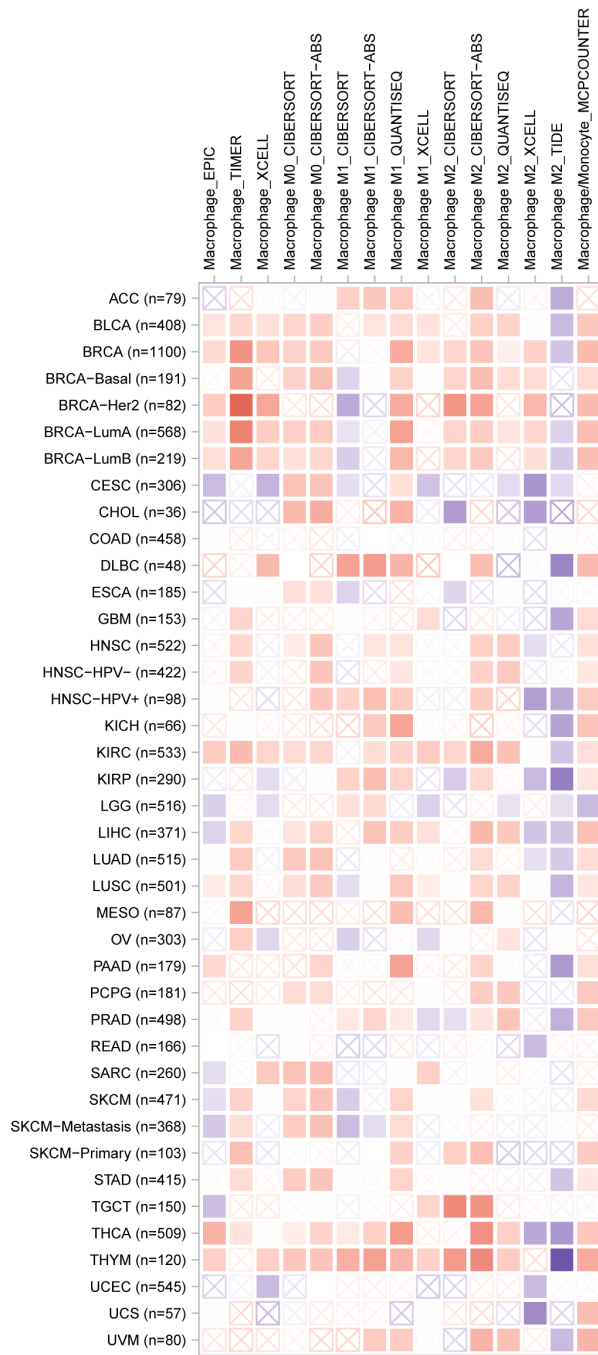
Relationship of CEMIP expression with immune infiltration level in diverse cancer types (TIMER 2.0).



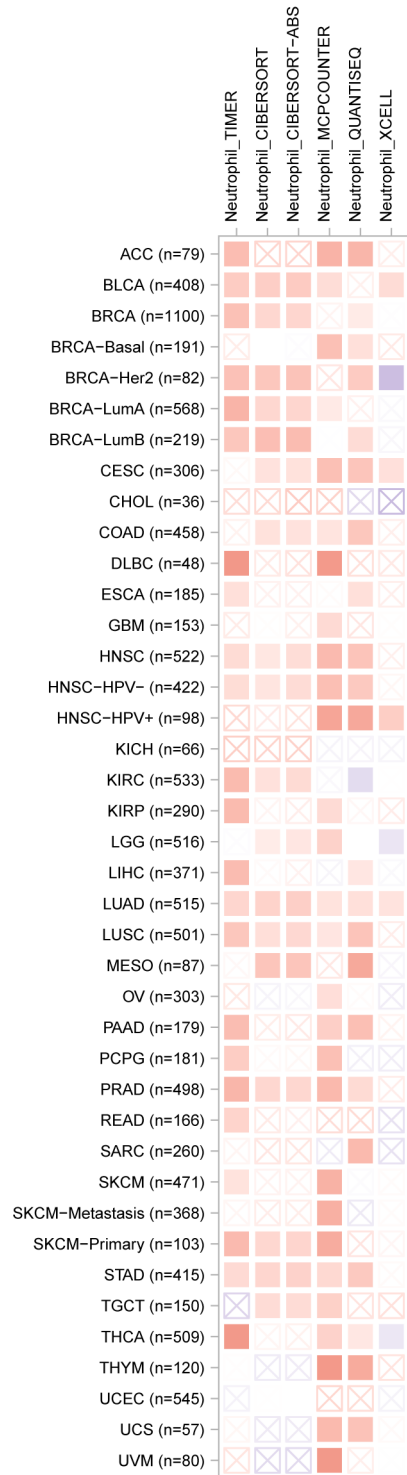
B cell immune infiltration level



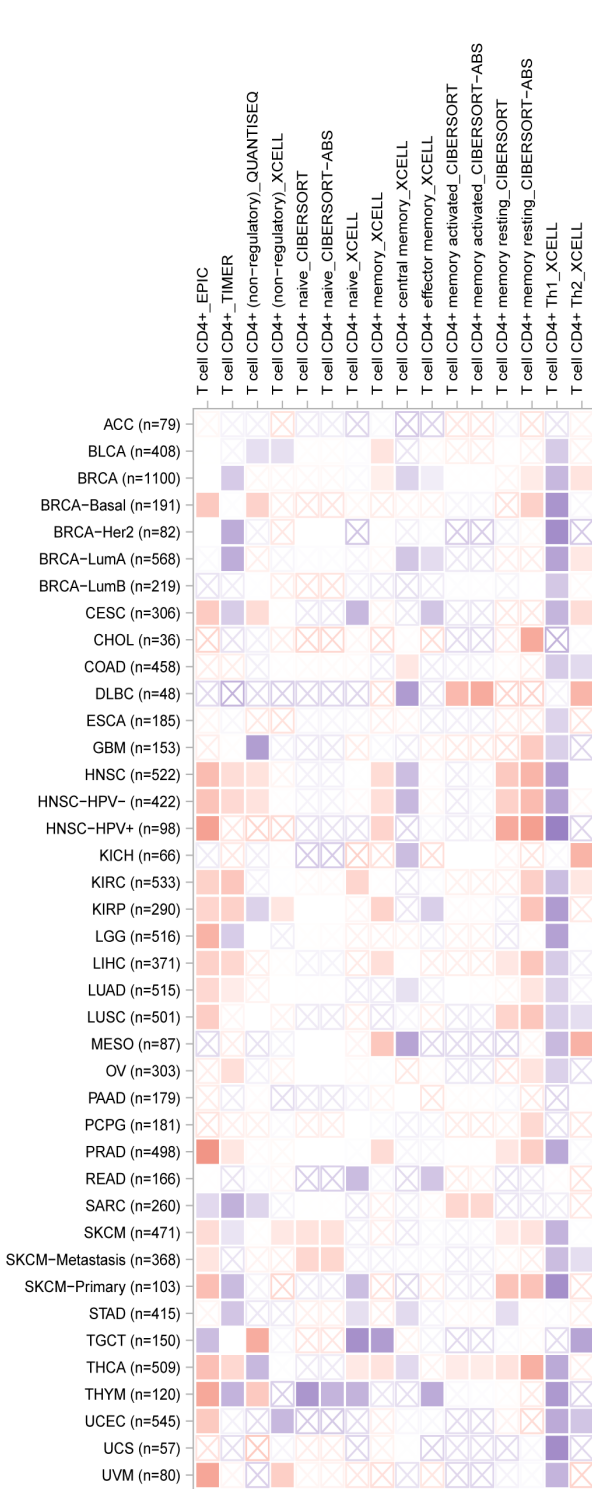
DC cell immune infiltration level



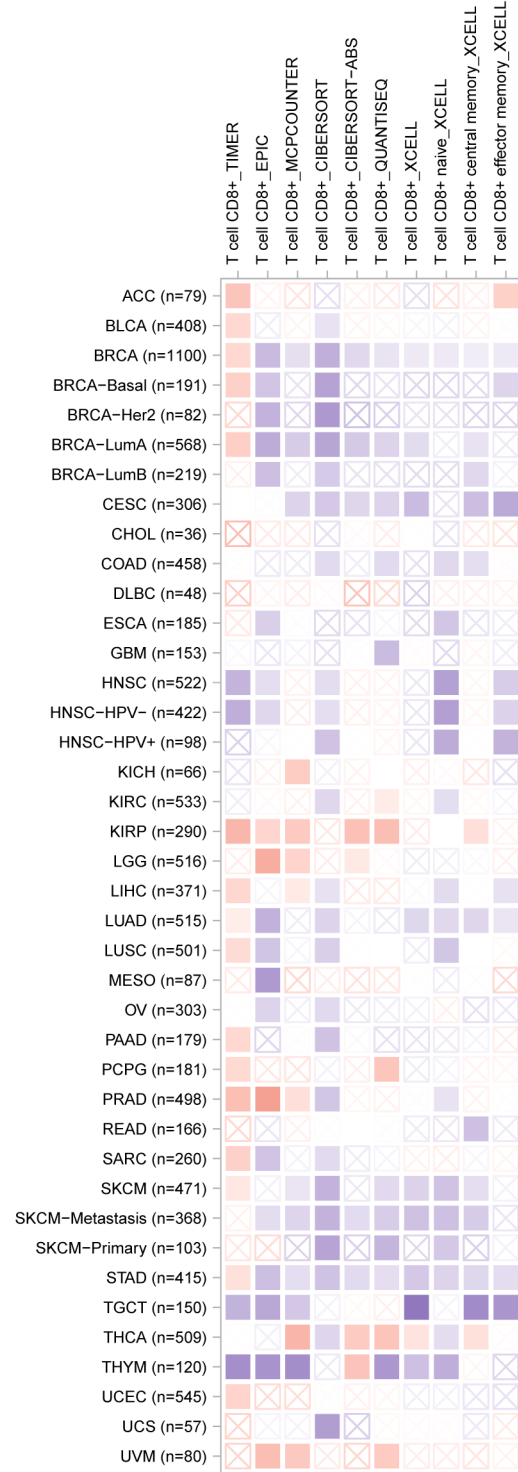
Macrophage immune infiltration level



Neutrophil immune infiltration level



T cell CD4+ immune infiltration level



T cell CD8+ immune infiltration level

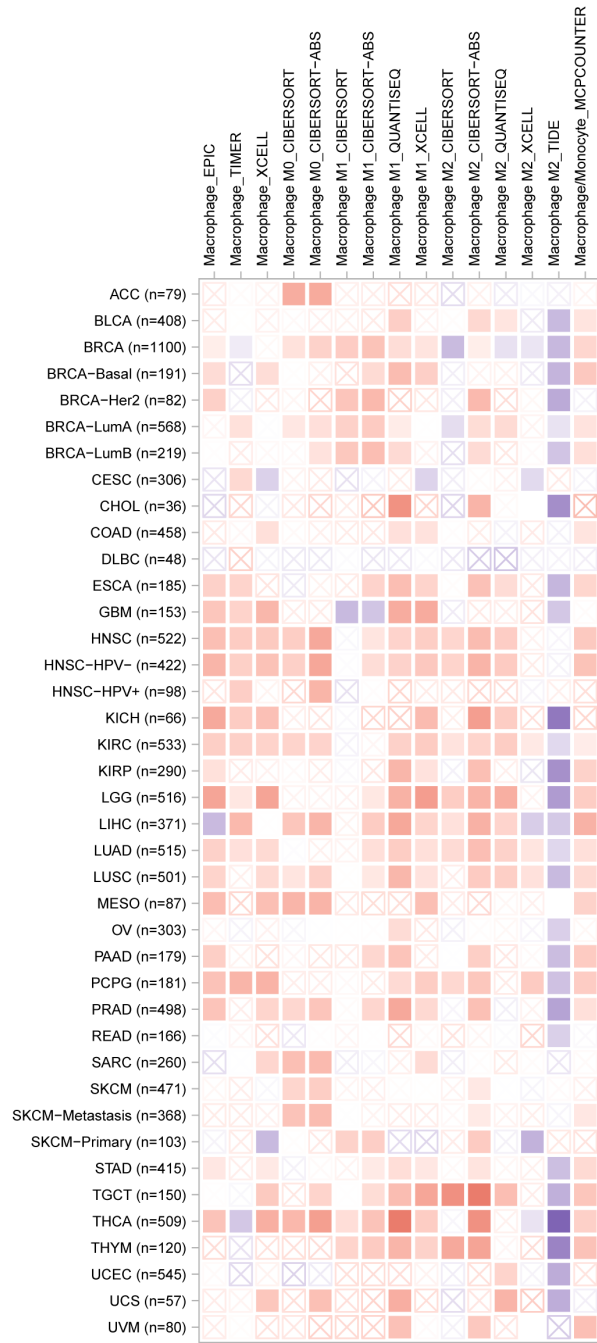
Relationship of MMP7 expression with immune infiltration level in diverse cancer types (TIMER 2.0).



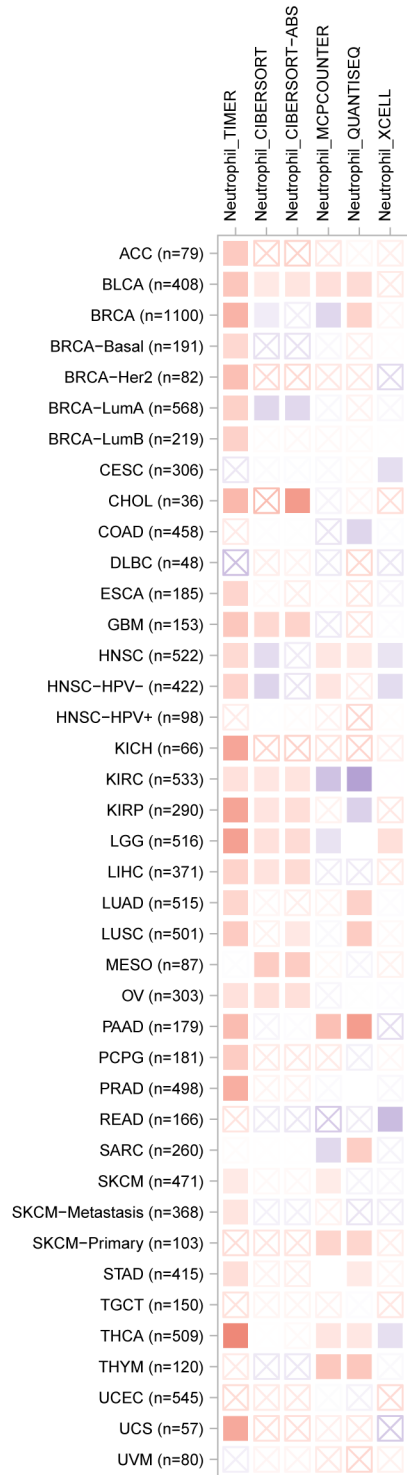
B cell immune infiltration level

DC cell immune infiltration level



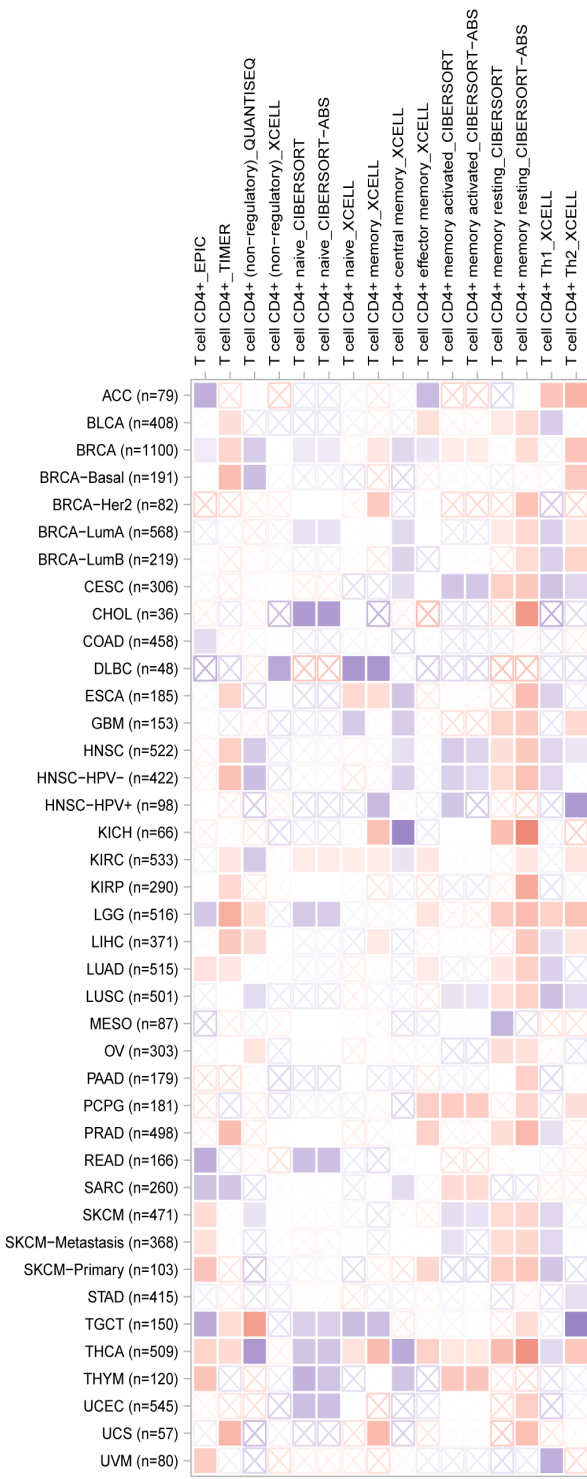


Macrophage immune infiltration level

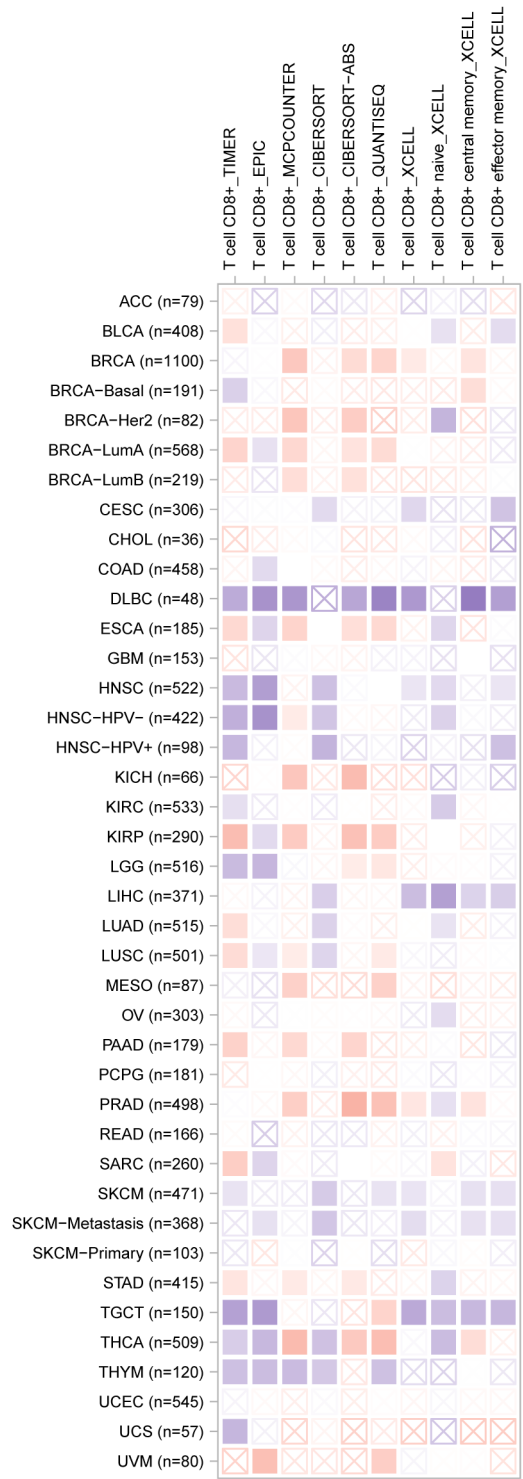


Neutrophil immune infiltration level





T cell CD4+ immune infiltration level



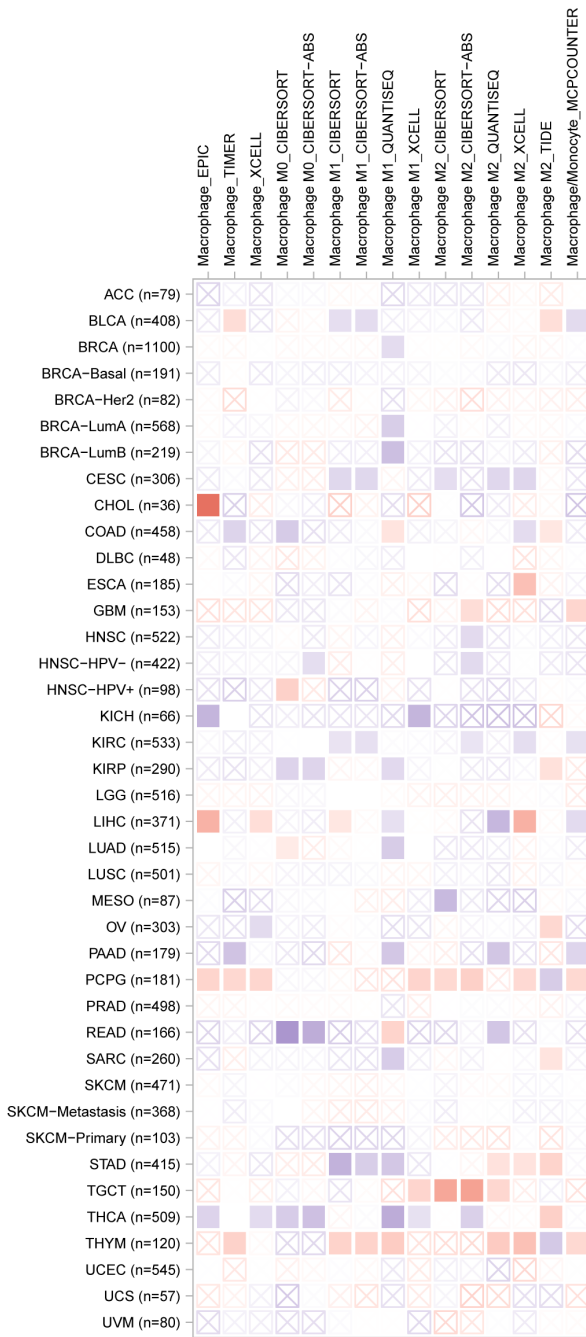
T cell CD8+ immune infiltration level

Relationship of ZG16 expression with immune infiltration level in diverse cancer types (TIMER 2.0).

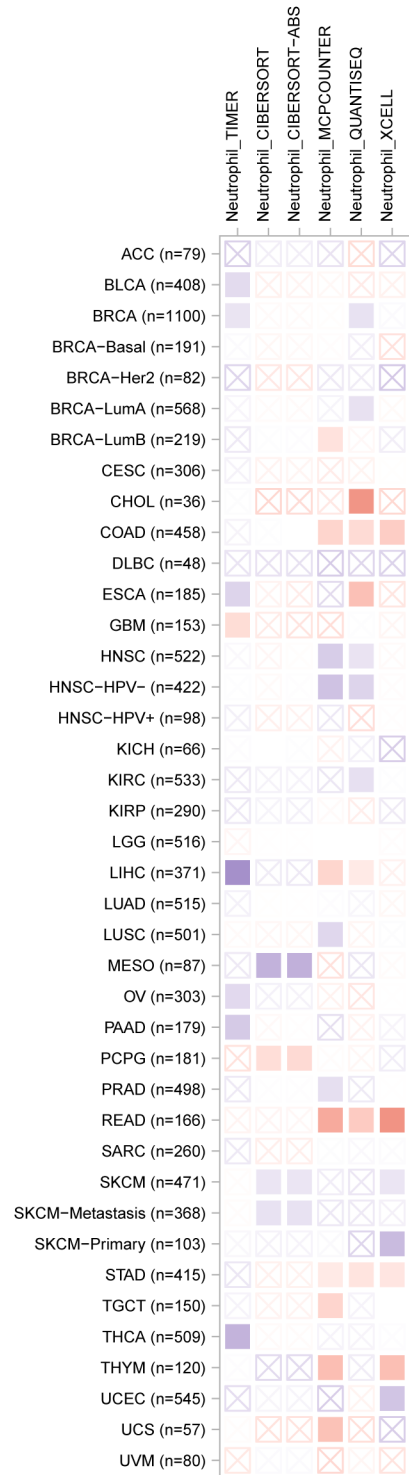


B cell immune infiltration level

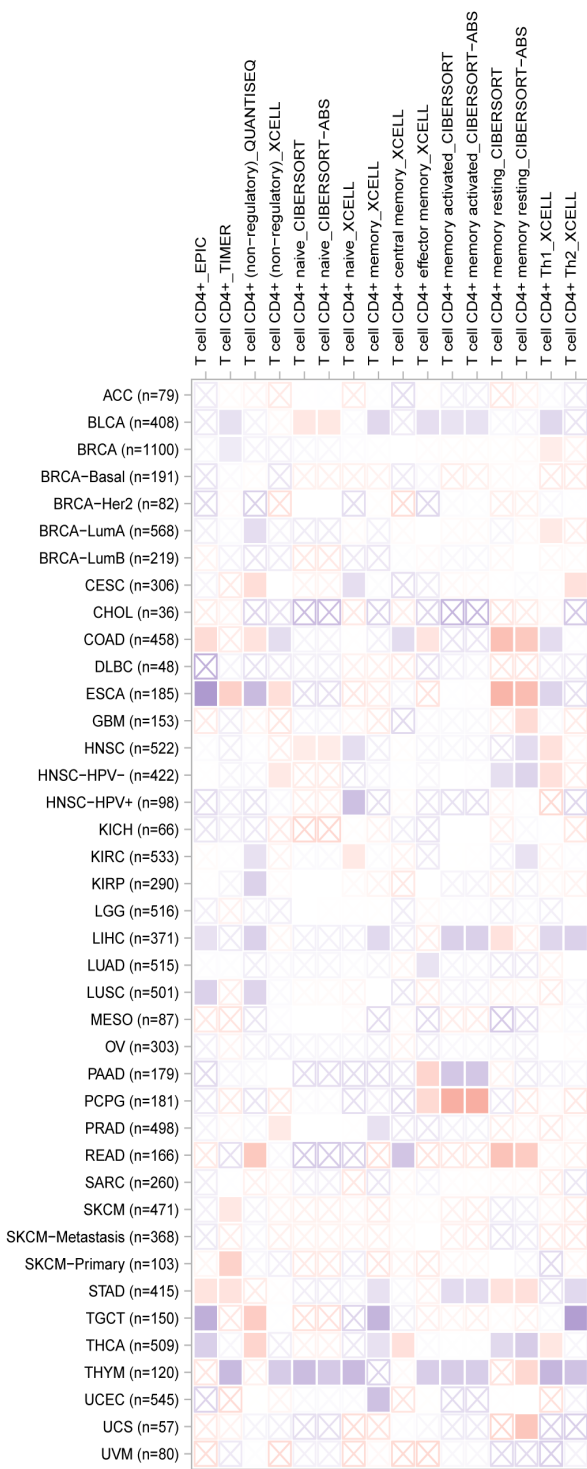
DC cell immune infiltration level



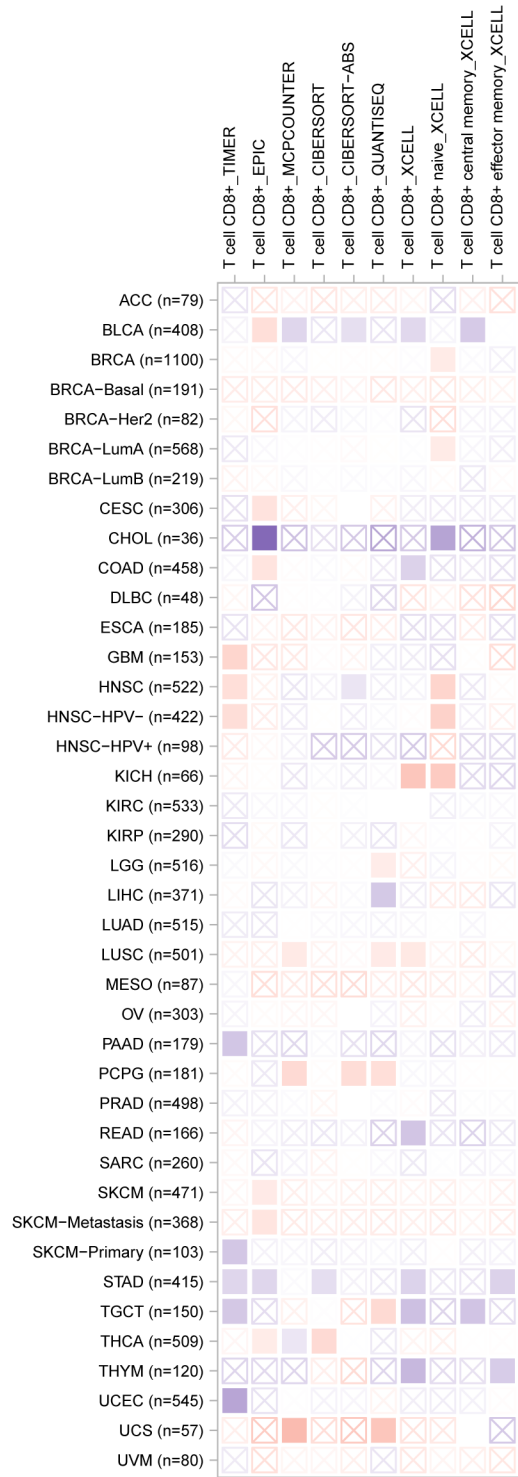
Macrophage immune infiltration level



Neutrophil immune infiltration level



T cell CD4+ immune infiltration level



T cell CD8+ immune infiltration level