

Erratum to Criollo A, et al. Cell Cycle Volume 11, Issue 1; pp. 194–9

Alfredo Criollo,^{1,2,3} Fanny Chereau,^{4,5,6} Shoaib Ahmad Malik,^{1,2,3} Mireia Niso-Santano,^{1,2,3} Guillermo Mariño,^{1,2,3}
Lorenzo Galluzzi,^{1,2,3} Maria Chiara Maiuri,^{1,2,3} Véronique Baud^{4,5,6} and Guido Kroemer^{1,2,6,7,8,9,*}

¹INSERM; U848; Villejuif, France; ²Institut Gustave Roussy; Villejuif, France; ³Université Paris-Sud 11; Le Kremlin-Bicêtre, France; ⁴INSERM; U1016; Institut Cochin; Paris, France; ⁵CNRS; UMR8104; Paris, France; ⁶Université Paris Descartes; Sorbonne Paris Cité; Paris, France; ⁷Metabolomics Platform; Institut Gustave Roussy; Villejuif, France; ⁸Centre de Recherche des Cordeliers; Paris, France; ⁹Pôle de Biologie; Hôpital Européen Georges Pompidou; AP-HP; Paris, France

It has come to the attention of the authors that in their recent Report entitled “Autophagy is required for the activation of NFκB” in Volume 11, Issue 1 of *Cell Cycle*, errors were inadvertently included in **Figures 1C and 2A**. In **Figure 1C**, the panel depicting Hoechst 33342 and Atg5-dependent fluorescence in *Atg5*^{-/-} mouse embryonic fibroblasts was rotated 90° clockwise as compared with the panel depicting p65-dependent fluorescence, resulting in a visual mismatch. This issue has been corrected. In **Figure 2A**, first panel from the top, the immunoblots depicting the protein levels of IKKα, IκBα and glyceraldehyde-3-phosphate dehydrogenase (GAPDH, which was used as a gel loading control) were incorrect, de facto constituting alternative exposures of the immunoblots reported in the same figure, second panel from the top. We have retrieved the original immunoblots, and the amended version of the figure is reported below. These immunoblots did not serve quantitative purposes, and the conclusions of this article are not altered. We apologize for these errors.

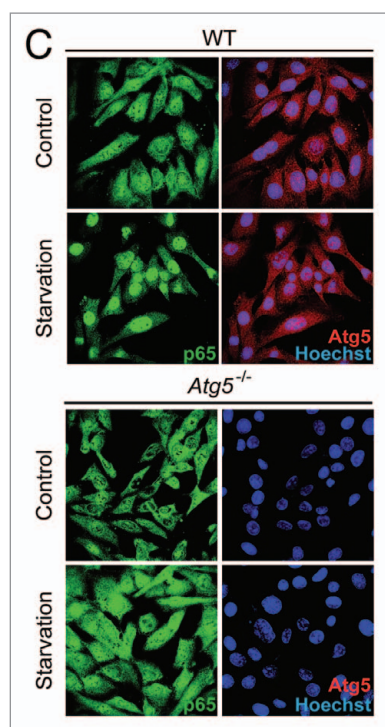


Figure 1C. Activation of the canonical NFκB activation pathway in autophagy-competent but not in autophagy-deficient mouse embryonic fibroblasts (MEFs).

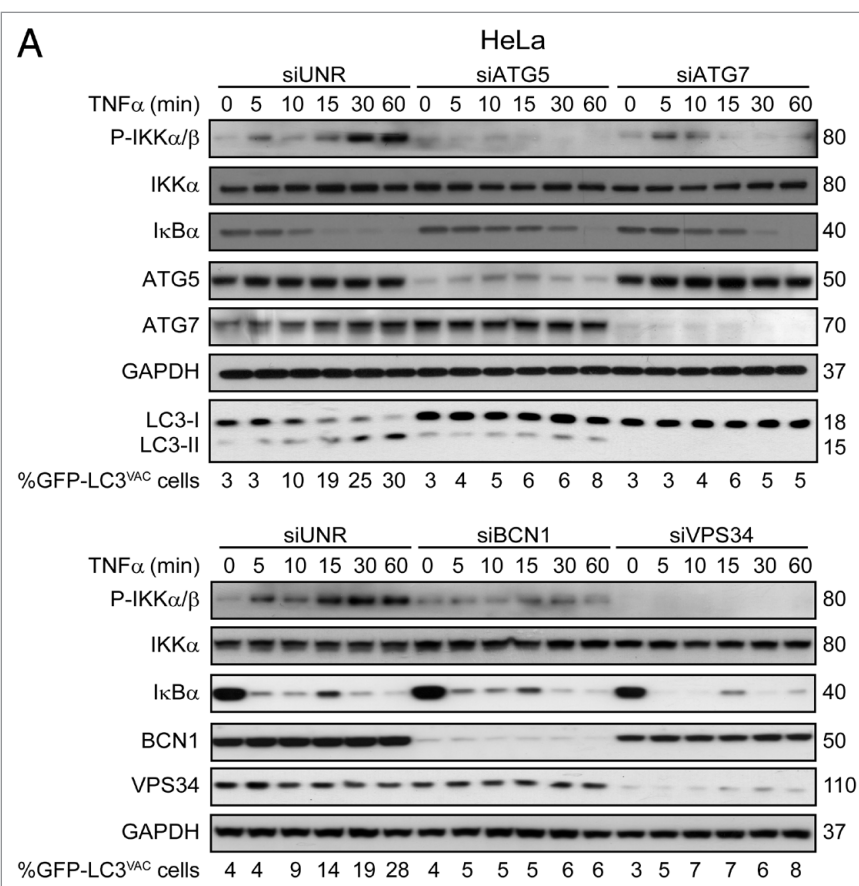


Figure 2A. Activation of the canonical NFκB pathway in HeLa and A549 cells responding to TNFα.

*Correspondence to: Guido Kroemer; Email: kroemer@igr.fr

Submitted: 11/16/12; Accepted: 11/16/12

<http://dx.doi.org/10.4161/cc.23148>

Erratum to: Criollo A, et al. Cell Cycle 2012; 11:194-9; PMID:22186785; <http://dx.doi.org/10.4161/cc.11.1.18669>.