



## Bacterial, Fungal and Virus Molecular Biology

# CspB of an arctic bacterium, *Polaribacter irgensii* KOPRI 22228, confers extraordinary freeze-tolerance

Youn Hong Jung<sup>a</sup>, Yoo Kyung Lee<sup>b</sup>, Hong Kum Lee<sup>b</sup>, Kyunghee Lee<sup>c</sup>, Hana Im<sup>a,\*</sup>

<sup>a</sup> Sejong University, Department of Molecular Biology, Seoul, Republic of Korea

<sup>b</sup> Korea Ocean Research and Development Institute, Division of Life Sciences, Korea Polar Research Institute, Incheon, Republic of Korea

<sup>c</sup> Sejong University, Department of Chemistry, Seoul, Republic of Korea

## ARTICLE INFO

## Article history:

Received 26 January 2016

Accepted 11 April 2017

Available online 31 July 2017

Associate Editor: Valeria Oliveira

## Keywords:

Cold-shock protein (Csp)

Psychrophile

Cold-resistance

## ABSTRACT

Freezing temperatures are a major challenge for life at the poles. Decreased membrane fluidity, uninvited secondary structure formation in nucleic acids, and protein cold-denaturation all occur at cold temperatures. Organisms adapted to polar regions possess distinct mechanisms that enable them to survive in extremely cold environments. Among the cold-induced proteins, cold shock protein (Csp) family proteins are the most prominent. A gene coding for a Csp-family protein, *cspB*, was cloned from an arctic bacterium, *Polaribacter irgensii* KOPRI 22228, and overexpression of *cspB* greatly increased the freeze-survival rates of *Escherichia coli* hosts, to a greater level than any previously reported Csp. It also suppressed the cold-sensitivity of an *E. coli* *csp*-quadruple deletion strain, BX04. Sequence analysis showed that this protein consists of a unique domain at its N-terminal end and a well conserved cold shock domain at its C-terminal end. The most common mechanism of Csp function in cold adaption is melting of the secondary structures in RNA and DNA molecules, thus facilitating transcription and translation at low temperatures. *P. irgensii* CspB bound to oligo(dT)-cellulose resins, suggesting single-stranded nucleic acid-binding activity. The unprecedented level of freeze-tolerance conferred by *P. irgensii* CspB suggests a crucial role for this protein in survival in polar environments.

© 2017 Sociedade Brasileira de Microbiologia. Published by Elsevier Editora Ltda. This is an open access article under the CC BY-NC-ND license (<http://creativecommons.org/licenses/by-nc-nd/4.0/>).

## Introduction

Living organisms encounter several serious challenges when they are exposed to cold environments, including reduced

enzyme activity, decreased membrane fluidity, reduced transport of nutrients and waste products, reduced protein movement, decreased rates of transcription and translation, slow DNA replication, retarded protein folding, cold-denaturation of proteins, and intracellular ice formation.<sup>1–3</sup> Although

\* Corresponding author at: Department of Molecular Biology, Sejong University, 209 Neungdong-ro, Gunja-dong, Gwangjin-gu, Seoul 05006, Republic of Korea.

E-mail: [hanaim@sejong.ac.kr](mailto:hanaim@sejong.ac.kr) (H. Im).

<https://doi.org/10.1016/j.bjm.2017.04.006>

1517-8382/© 2017 Sociedade Brasileira de Microbiologia. Published by Elsevier Editora Ltda. This is an open access article under the CC BY-NC-ND license (<http://creativecommons.org/licenses/by-nc-nd/4.0/>).

freezing temperatures are a major environmental threat at the North and South Poles, relatively high numbers of diverse microorganisms thrive in the polar regions. In particular,  $\alpha$ -,  $\beta$ -, and  $\gamma$ -proteobacteria and the *Cytophaga-Flavobacterium-Bacteroides* phyla are the most commonly found bacteria, and eukaryotes, such as yeasts and microalgae, are frequently found in polar environments.<sup>4</sup> Organisms living in the polar regions must have the ability to adapt to extremely cold temperatures. To avoid the transition from a fluid- to gel-phase cell membrane, the proportion of unsaturated and methyl-branched fatty acids in lipid membranes is increased.<sup>5</sup> The formation of stable secondary structures in nucleic acids at low temperatures inhibits replication, transcription, and translation. Thus, nucleic acid-binding proteins, such as Csp-family proteins and RNA helicases, are induced during temperature downshifts and function as RNA chaperones,<sup>6</sup> melting the stable secondary structures in RNA molecules, which facilitates translation and ribosome biogenesis.<sup>7–9</sup> Several chaperones, such as GroEL<sup>10</sup> and DnaK,<sup>11</sup> are induced upon cold shock, possibly to cope with cold-denatured proteins. Protein folding, especially *cis/trans* isomerization of peptidyl prolyl bonds, occurs very slowly at low temperatures, and peptidyl prolyl isomerases play an important role in cold adaptation by facilitating the folding of functionally significant proteins.<sup>12</sup> Cryoprotectants, such as antifreeze proteins,<sup>13</sup> trehalose,<sup>2</sup> and exopolysaccharides,<sup>14</sup> have also been implicated in protection of polar organisms, either by preventing ice crystal formation or by avoiding dehydration. Genomic sequencing results suggest some other characteristics of psychrophiles, like enhanced antioxidant capacity to cope with increased production of toxic reactive oxygen species.<sup>15</sup>

Increasing numbers of Csp homologs are being reported from psychrophiles, mostly through genomic DNA sequencing projects, but only limited functional data are available. In an effort to elucidate the detailed mechanisms that allow polar organisms to survive at low temperatures, we studied the functional roles of Csp-family proteins in polar bacteria. A psychrophilic bacterium, *Polaribacter irgensii* KOPRI 22228, was isolated from Arctic Sea sediment.<sup>16</sup> Two *csp* genes, *cspA<sub>Pi</sub>* and *cspC<sub>Pi</sub>*, were previously cloned from this bacterium and exhibited considerable homology to canonical *Escherichia coli* *cspA* (CspA<sub>Ec</sub>). Overexpression of either of these two genes conferred significant cold-resistance phenotypes to their recombinant hosts, and also complemented the cold-sensitivity of a quadruple *csp* deletion mutant BX04 ( $\Delta$ *cspA*,  $\Delta$ *cspB*,  $\Delta$ *cspG*, and  $\Delta$ *cspE*) strain,<sup>17</sup> suggesting functional homology among those Csp-family proteins.<sup>16</sup> In this study, we report another Csp-homologous protein from *P. irgensii* KOPRI 22228, CspB<sub>Pi</sub>, which contains an extra domain on its N-terminal region, in addition to the well conserved cold-shock domain (CSD) at its C-terminal region. This belongs to a subfamily of CSD-fold proteins, recently identified through metagenomic studies of psychrophilic bacteria, and no functional data is available for this kind of proteins at our best knowledge. Therefore, the function of this unique Csp protein from an arctic bacterium in conferring cold tolerance was analyzed in this study.

## Materials and methods

### Bacterial culture and cloning of the *cspB<sub>Pi</sub>* gene

*P. irgensii* KOPRI 22228 was isolated from Arctic Sea sediments near Dasan Korean Arctic Station (Ny-Alesund, Norway), and cultured as previously reported.<sup>16</sup> The *cspB<sub>Pi</sub>* gene (GenBank WP\_004570868) was obtained by PCR amplification. The template DNA was extracted from *P. irgensii* KOPRI 22228 cells using G-spin™ bacteria genomic DNA extraction kit (Intron Co., Korea), according to the protocol suggested by the manufacturer. The forward primer sequence was CspB<sub>Pi</sub> F1H, 5'-AGTAAGCTTATGGCAAATCGCAGCAGACCT-3', and the reverse primer was CspB<sub>Pi</sub> B150\*B, 5'-CCGGATCCTATATTTGGTAACTTTAACTGCATTGATT-3' (manufactured by Bioneer Co., Daejeon, Korea). The PCR mixture consisted of 5  $\mu$ l of 10 $\times$  PCR buffer (final concentrations: 50 mM KCl, 0.01% gelatin, 10 mM Tris-HCl, pH 9.0), 2.5 mM MgCl<sub>2</sub>, 0.2 mM of each dNTP, 200 nM of each primer, 1  $\mu$ l of template DNA, and 2.5 units of Taq DNA polymerase (Takara, Japan) in the final 50  $\mu$ l volume. The PCR was performed in a DNAEngine thermal cycler (Bio-Rad Laboratories Inc., USA) using a cycling condition that consisted of an initial denaturation at 95 °C for 5 min and then 30 cycles with denaturation at 94 °C for 1 min, annealing at 55 °C for 30 s, and extension at 72 °C for 1 min. A final extension was performed at 72 °C for 5 min. The PCR products that were 0.5 kb in size were double-digested with HindIII and BamHI, and cloned using pAED4,<sup>18</sup> an *E. coli* expression vector, digested with the same enzymes. To avoid any mutations arising from error-prone Taq DNA polymerase reactions, several clones were picked for sequencing analysis. The resulting plasmids was named pAED-cspB<sub>Pi</sub>.

### Expression of CspB<sub>Pi</sub> in *E. coli*

The recombinant plasmid for expression of CspB<sub>Pi</sub>, pAED-cspB<sub>Pi</sub>, was transformed into competent *E. coli* BL21(DE3) cells (Invitrogen Co., CA, USA) using the method described by Sambrook et al.<sup>19</sup> For overproduction of CspB<sub>Pi</sub>, 1 ml of the overnight liquid culture was transferred to a flask containing 50 ml fresh LB medium containing 100  $\mu$ g/ml ampicillin. When cell cultures had reached an OD<sub>600</sub> of 0.4, IPTG was added to the final concentration of 0.1 mM. The cultures were incubated further at 37 °C for 2 h with vigorous shaking. Overexpression of the CspB<sub>Pi</sub> was analyzed by 20% SDS-PAGE. The protein bands were visualized by Coomassie brilliant blue R250 staining.

### Resistance to freezing and thawing

CspB<sub>Pi</sub> protein was overexpressed in *E. coli* as described above. As the experimental control, *E. coli* transformed with a pAED4 plasmid lacking the *cspB<sub>Pi</sub>* insert was used. One ml aliquot of liquid culture was placed at -20 °C for 2 h. The frozen cells were taken out of the freezer and put on ice for 1 h to be thawed. This process was performed in duplicates and repeated up to three cycles. Aliquots were taken at each

cycle of freeze-and-thaw, and colony-forming units (CFU) were counted after incubation on LB plates at 37 °C for 24 h. The data were collected from five independent experiments and shown as an average for each point.

### Purification of CspB<sub>Pi</sub>

CspB<sub>Pi</sub> were overexpressed at 37 °C in *E. coli* BL21(DE3) as described above, except that the cultures were scaled-up to 1 L liquid LB media. Cells were harvested by centrifugation, and resuspended in 40 ml of 10 mM phosphate buffer, pH 6.5. Cells were lysed by sonication using a Bandelin Sonoplus HD2200 ultrasonic homogenizer (Berlin, Germany) as described for CspA<sub>Pi</sub>.<sup>16</sup> The supernatant fraction was loaded on a Q-sepharose™ (Amersham Bioscience Co.) fast flow ion exchange column equilibrated with the same buffer. CspB<sub>Pi</sub> protein was eluted with a 0–0.5 M NaCl gradient. Concentrations of proteins were determined using Bio-Rad DC (detergent compatible) protein assay kit, and the purity of proteins was analyzed by 20% SDS-PAGE.

### Oligo(dT)-cellulose binding assays

Purified CspB<sub>Pi</sub> protein was dialyzed against binding buffer (10 mM Tris-HCl, pH 8.0, 1 mM EDTA, 50 mM KCl, and 7.4% glycerol). Fifty μl of oligo(dT)-cellulose type 7 beads (Amersham Bioscience Co.) were incubated with 50 μg of CspB<sub>Pi</sub> protein at 4 °C for 4 h. The resins and bound proteins were collected by brief centrifugation, and washed twice with the binding buffer. In parallel, 50 μg of bovine serum albumin (BSA) protein, instead of CspB<sub>Pi</sub> protein, was used as the experimental control. Co-precipitated proteins were analyzed by 20% SDS-PAGE and Coomassie brilliant blue R250 staining.

### Rescue of cold-sensitive *E. coli* BX04 strain

*E. coli* quadruple *csp* deletion strain BX04 cells harboring pAED,<sup>18</sup> pAED-*cspA*<sub>Pi</sub>,<sup>16</sup> pAED-*cspB*<sub>Pi</sub>, or pAED-*cspC*<sub>Pi</sub><sup>16</sup> were grown in the liquid culture to an OD<sub>600</sub> of 0.4. The cells were then streaked onto LB plates containing 0.1 mM IPTG, and incubated at temperatures ranging from 16 to 37 °C. After 15 h at 37 °C, 24 h at 25 °C, or 60 h at 16 °C, the growth of BX04 cells on the plates was observed.

## Results

### Cloning and sequence analysis of the *cspB* gene from *P. irgensii* KOPRI 22228

*P. irgensii* KOPRI 22228 was isolated from Arctic Sea sediments and grown as previously reported.<sup>16</sup> This bacterium is a psychrophile, with an optimum growth temperature of 10 °C. In an effort to elucidate the roles played by Csps in psychrophilic bacteria, DNA fragments from this bacterium, which contain a region encoding a conserved CSD, were cloned. A new *csp*-homologous gene 0.45 kb in size was obtained and named *cspB*<sub>Pi</sub>.

A BLAST nucleotide homology search of *cspB*<sub>Pi</sub> was performed: *cspB*<sub>Pi</sub> exhibited low homology to the canonical *cspA*<sub>Ec</sub>

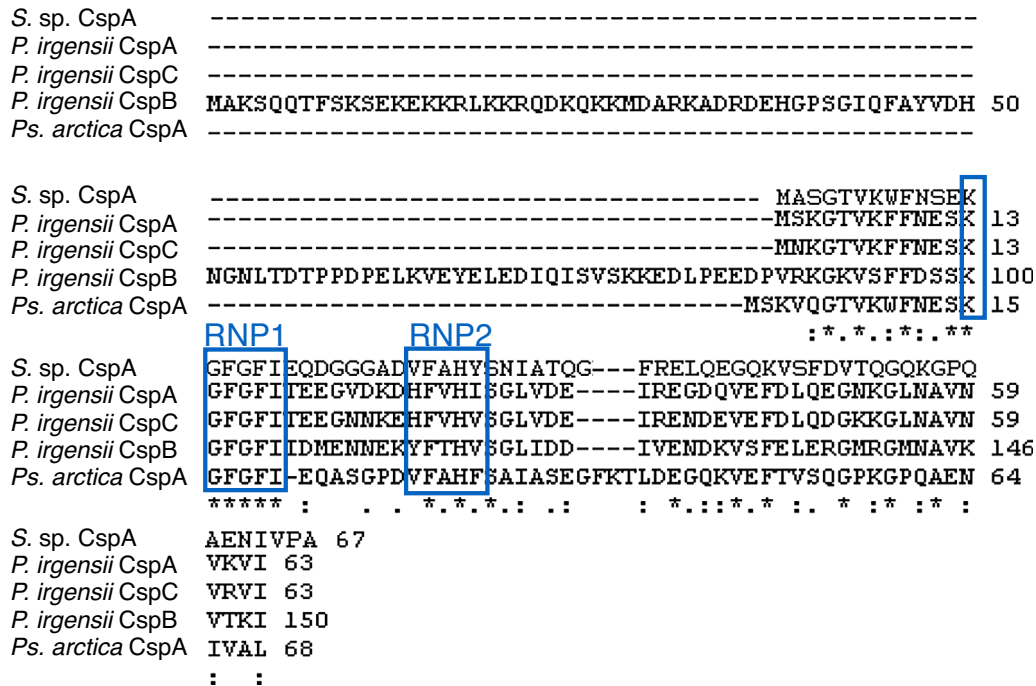
(15.8%) and *E. coli cspD* (12.4%). The deduced amino acid sequence of *cspB*<sub>Pi</sub> encoded a protein 150 residues in length, and the CspB<sub>Pi</sub> sequence was aligned to previously studied Csp sequences from polar bacteria: CspA from *Streptomyces* sp. AA8321 (CspA<sub>St</sub>),<sup>20</sup> CspA from *Psychromonas arctica* KOPRI 22215 (CspA<sub>Pa</sub>)<sup>21</sup> and CspA<sub>Pi</sub> and CspC<sub>Pi</sub> from *P. irgensii* KOPRI 22228.<sup>16</sup> All Csps have a typical β-barrel CSD composed of five β-strands, but CspB<sub>Pi</sub> has a unique extra domain at its N-terminal end (Fig. 1). CSD is highly conserved among many bacterial Csps, and the three-dimensional structures of some Csps, including CspA<sub>Ec</sub> and *Bacillus subtilis* CspB, have been reported.<sup>22,23</sup> CSD is believed to mediate nucleic acid binding. In particular, two RNA-binding motifs, RNP1 (with consensus sequence K-G-F-G-F-I) and RNP2 (with consensus sequence V-F-V-H-F) are crucial for binding to RNA or ssDNA (boxed in Fig. 1).<sup>24</sup> In RNP2 of CspB<sub>Pi</sub>, the first and the second Val residues were replaced with Tyr and Thr, respectively, and the last Phe residue was replaced with Val. However, all three Phe residues (Phe-15, Phe-17, and Phe-28; residue numbers according to the canonical CspA<sub>Ec</sub>) in the RNA-binding motifs, which are considered to be necessary for nucleic acid-binding activity,<sup>24,25</sup> were conserved in CspB<sub>Pi</sub>. Sequence analysis of CspB<sub>Pi</sub> suggested that the protein may bind to RNA or ssDNA through a canonical cold shock domain β-barrel structure. Meanwhile, the additional N-terminal domain of this protein did not show any noticeable homology to other proteins.

### Cold-resistance of the host overexpressing CspB<sub>Pi</sub> was greatly increased

To study the roles of Csps from psychrophilic bacteria, cold resistance of the hosts harboring *csp* genes, was examined. Csp-overexpression was induced by the addition of IPTG to mid-log phase liquid cultures of cells carrying a *csp*-expression vector. When *E. coli* cells harboring pAED4 were frozen and thawed once, less than 1% of the original cells survived. Following repeated cycles of freezing and thawing, the number of surviving cells decreased almost exponentially. Overexpression of previously reported *csp* genes from polar bacteria increased freeze-survival rates of the hosts only moderately: the *Ps. arctica* CspA<sub>Pa</sub>-expressing cells exhibited a slightly increased survival rate and the CspA<sub>Pi</sub> or CspC<sub>Pi</sub>-overexpressing cells showed more than five-fold increase in the survival rates in the first freeze-thaw cycle (Fig. 2).<sup>16,21</sup> Surprisingly, the CspB<sub>Pi</sub>-overexpressing cells showed an extraordinary increase in freeze-tolerance: more than fifty fold the number of cells survived the first freeze-thaw cycle and the number of surviving cells increased to greater than 100 000-fold after three cycles of freezing and thawing compared to the number of surviving pAED4-carrying cells (Fig. 2).

### CspB<sub>Pi</sub> binds oligo(dT)-cellulose

Since CspB<sub>Pi</sub> contains CSD and the conserved Phe residues in the RNP1 and RNP2 sequence motifs, which suggest single-stranded RNA or DNA binding activity, the functionality of the single-stranded nucleic acid-binding motifs of this protein was examined. Upon incubation of *E. coli* BL21 cells harboring pAED-*cspB*<sub>Pi</sub> with 0.1 mM IPTG, a protein band with



**Fig. 1 – Sequence alignment of various Csp proteins from polar organisms. Abbreviations for bacterial Csps whose amino acid sequences were analyzed here: *S. sp. CspA*, *Streptomyces sp. AA8321 CspA<sub>St</sub>*<sup>20</sup>; *P. irgensii CspA* and *CspC*, *Polaribacter irgensii* KOPRI 22228 *CspA<sub>Pi</sub>* and *CspC<sub>Pi</sub>*, respectively<sup>16</sup>; *P. irgensii CspB*, *P. irgensii* KOPRI 22228 *CspB<sub>Pi</sub>* from this study; *Ps. arctica CspA*, *Psychromonas arctica* KOPRI 22215 *CspA<sub>Pa</sub>*.<sup>21</sup> The amino acid sequences of Csp proteins were aligned using the default settings of CLUSTAL W.<sup>27</sup> Below the protein sequences is a key denoting conserved sequence (\*), conservative mutations (:), semi-conservative mutations (.), and non-conservative mutations (). Gaps indicated by hyphens (-) were introduced to improve alignment. The RNA-binding motifs RNP1 and RNP2 are boxed.**

an apparent molecular mass of 23 kDa on SDS-PAGE was observed. *CspB<sub>Pi</sub>* was expressed in soluble form and purified by anion-exchange column chromatography. Partially purified *CspB<sub>Pi</sub>* was incubated with oligo(dT)-cellulose beads at 4 °C for 4 h and subjected to a brief centrifugation. When the reaction products were analyzed by 20% SDS-PAGE, *CspB<sub>Pi</sub>* was bound to the oligo(dT)-cellulose and co-precipitated with the resins, while neither bovine serum albumin used at the same concentration nor contaminating proteins from the *CspB<sub>Pi</sub>* preparation were co-precipitated (Fig. 3). The result suggests that *CspB<sub>Pi</sub>* binds ssDNA.

#### ***CspB<sub>Pi</sub>* suppresses the cold-sensitive phenotype of the *csp* quadruple-deletion *E. coli* strain**

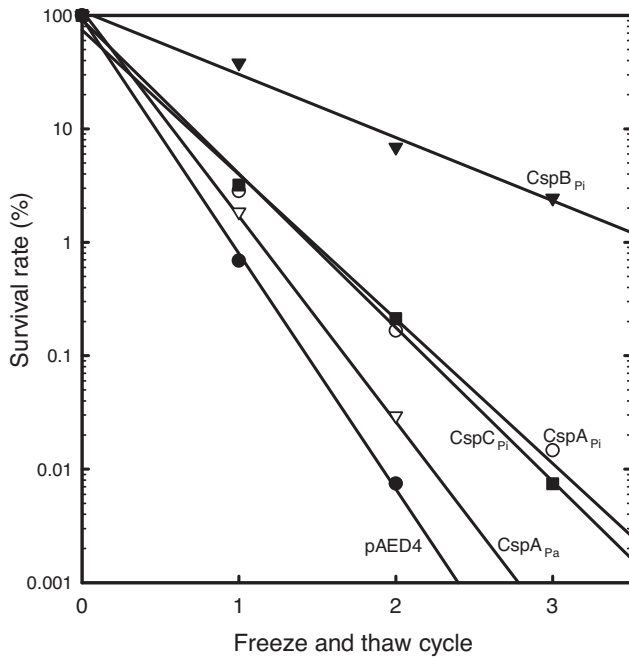
Since overexpression of *CspB<sub>Pi</sub>* greatly increased the cold resistance of wild-type *E. coli* (Fig. 2), the ability of *CspB<sub>Pi</sub>* to suppress the cold-sensitivity of the *E. coli* quadruple *csp* deletion strain BX04 ( $\Delta cspA$ ,  $\Delta cspB$ ,  $\Delta cspG$ , and  $\Delta cspE$ ) was also examined. Mid-log phase cultures of BX04 cells harboring pAED4, pAED-*cspA<sub>Pi</sub>*, pAED-*cspB<sub>Pi</sub>*, or pAED-*cspC<sub>Pi</sub>* were streaked onto LB plates containing 0.1 mM IPTG and incubated at temperatures ranging from 16 to 37 °C. As described previously,<sup>17</sup> the growth of BX04 cells was comparable to other clones at 37 °C, but the growth was extremely retarded at 16 °C (Fig. 4). Meanwhile, overexpression of any Csps from *P. irgensii* complemented the cold-sensitivity of BX04 at 25 °C and at

16 °C (Fig. 4). When the growth of BX04 was followed by OD<sub>600</sub>, overexpression of *CspB<sub>Pi</sub>* promoted the growth at low temperatures at slightly higher levels than *CspA<sub>Pi</sub>* or *CspC<sub>Pi</sub>* did (data not shown).

## **Discussion**

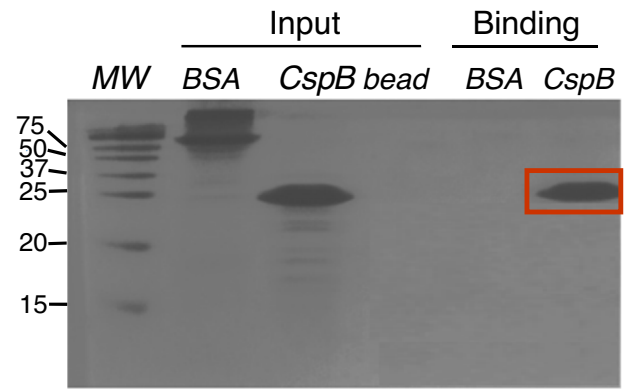
Cold temperatures affect all physical-chemical parameters of living organisms, and effects include decreased solute diffusion rates, ice crystal formation, dehydration, decreased membrane fluidity, slow enzyme reaction rates, stable secondary structure formation in nucleic acids, and cold-denaturation of proteins. Psychrophilic organisms from cold ecosystems have evolved biological means to circumvent these challenges. Although transcription and translation of most genes are nearly stopped upon sudden temperature drops in mesophiles, expression of cold-shock genes are selectively induced.<sup>1</sup> Meanwhile, corresponding genes in psychrophiles are more consistently expressed, instead of being transiently induced during the cold acclimation phase,<sup>3</sup> suggesting that Csps play important roles for survival in cold environments.

In an effort to understand the mechanisms played by psychrophiles to adapt to cold biosphere, this study focused on the functions of Csps from polar bacteria. Although dozens of *csp* genes from psychrophiles have been identified by genomic/metagenomics approaches, their roles on



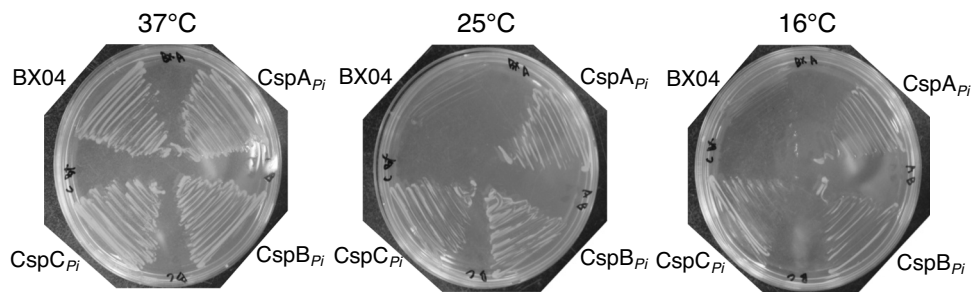
**Fig. 2 – Greatly increased cold-resistance of CspB<sub>Pi</sub>-overexpressing cells.** The survival rates of various Csp-overexpressing cells following cycles of freeze-and-thaw are shown. The number of viable cells prior to freezing was set at 100%. ●, Control pAED4-carrying cells; ▽, CspA<sub>Pa</sub>-overexpressing cells; ○, CspA<sub>Pi</sub>-overexpressing cells; ■, CspC<sub>Pi</sub>-overexpressing cells; ▼, CspB<sub>Pi</sub>-overexpressing cells.

cold-adaptation were elucidated only in very limited cases. Heterogeneous expression of Csps from polar microorganisms resulted in various effects on cold adaption of their recombinant hosts. Certain Csps failed to increase cold-resistance of their hosts: CspA<sub>St</sub> from an Antarctic *Streptomyces* neither increased the cold-resistance of wild-type *E. coli*, nor that of the *E. coli* quadruple *csp* deletion strain BX04.<sup>20</sup> Instead overproduction of CspA<sub>St</sub> inhibited DNA replication, as non-canonical *E. coli* CspD does, suggesting a role for CspA<sub>St</sub> in halting DNA replication until the cell adjusts itself upon sudden temperature drops.<sup>20</sup> Similarly, overexpression of a Csp from an Antarctic haloarchaeon *Halorubrum lacusprofundi* did not suppressed the cold sensitivity of BX04.<sup>26</sup> Meanwhile, it



**Fig. 3 – Oligo(dT)-binding activity of CspB<sub>Pi</sub>.** CspB<sub>Pi</sub> was incubated with oligo(dT)-cellulose at 4 °C for 4 h. Proteins bound to beads were collected by centrifugation. Lanes: MW, precision plus protein standards (Bio-Rad Laboratories Inc.; size of each protein band is shown in kDa at left of the gel); BSA, bovine serum albumin; CspB, CspB<sub>Pi</sub>; bead, oligo(dT)-cellulose only. The migration position of the bound CspB<sub>Pi</sub> protein is indicated with a red box.

has been reported that the overexpression of CspA<sub>Pa</sub> increased the cold-resistance of wild-type *E. coli*, but not of the *E. coli* quadruple *csp* deletion strain BX04.<sup>21</sup> Therefore, the contribution of CspA<sub>Pa</sub> to the cold survival of their recombinant hosts seemed relatively modest. Other Csps from psychrophilic organisms were more effective in increasing cold tolerance of their hosts; the overexpression of CspA<sub>Pi</sub> or CspC<sub>Pi</sub> not only increased the cold-survival rates of wild-type *E. coli* by more than five-fold following one cycle of freezing and thawing, but also rescued cold-sensitive phenotype of BX04.<sup>16</sup> Overexpression of Csps from a stenopsychrophilic archaeon *Methanogenium frigidum* or a deep sea planktonic archaeon *Crenarchaeota* also complemented cold susceptibility of *E. coli* BX04.<sup>26</sup> Since no quantitative data on freeze-tolerance conferred by these proteins were provided, more detailed studies would be necessary to compare their effect with that of CspB<sub>Pi</sub>. However, overexpression of any *E. coli* Csps, except CspD<sub>EC</sub>, also rescued cold-sensitive *E. coli* BX04,<sup>17</sup> and overexpression of CspA<sub>EC</sub> increased survival rates of the wild-type *E. coli* upon freezing and thawing at a comparable level to CspA<sub>Pi</sub> or CspC<sub>Pi</sub> (data not shown). These results show that the ability to confer cold resistance to their hosts is not the unique characteristics



**Fig. 4 – Overexpression of CspB<sub>Pi</sub> rescued cold-sensitive phenotype of *csp* quadruple-deletion *E. coli* strain, BX04.** BX04 cells harboring pAED, pAED-*cspA<sub>Pi</sub>*, pAED-*cspB<sub>Pi</sub>*, or pAED-*cspC<sub>Pi</sub>* were grown in the liquid culture to an OD<sub>600</sub> of 0.4. The cells were then streaked on LB plates containing 0.1 mM IPTG, and incubated at temperatures ranging from 16 to 37 °C.

of Csps from psychrophiles: previous studies rather suggest that several Csps from psychrophiles have retained sufficient similarity throughout evolution to be able to function effectively in mesophiles to confer cold tolerance.

Surprisingly, overexpression of CspB<sub>Pi</sub> greatly increased the cold tolerance of its recombinant host to an unprecedented level (Fig. 2). Overexpression of CspB<sub>Pi</sub> not only induced a more than fifty fold increase in freeze-tolerance in wild-type *E. coli* (Fig. 2), but also noticeably promoted the growth of the *E. coli* quadruple *csp* deletion strain at low temperatures (Fig. 4). Elucidating the detailed mechanisms involved in freeze-tolerance conferred by CspB<sub>Pi</sub> would be of great academic interest and will be pursued in a future study. CspB<sub>Pi</sub> possesses cold shock domains at the C-terminal region (Fig. 1) and shares the basic characteristics of Csps, including the ability to bind single-stranded nucleic acids, as indicated by oligo(dT)-binding assays (Fig. 3). One possibility is that the CSD of CspB<sub>Pi</sub> may have greatly improved activity, for example as a RNA chaperone, maintaining single stranded nucleic acid structures at extremely low temperatures and allowing efficient transcription and translation. On the other hand, CspB<sub>Pi</sub> has an extra domain on its N-terminal region, and it is also possible that this unique region plays a distinct role in conferring an extraordinary increase in cold survival ability. Sequence homology search has identified several *cspB<sub>Pi</sub>*-homologous genes, encoding both N-terminal extra domain and CSD, from evolutionarily related marine Flavobacteriaceae, including *Polaribacter* sp. MED152, *Lacinutrix* sp. 5H-3-7-4, *Winogradskyella* sp. PG-2, and *Maribacter* sp. HTCC2170. However, their functional roles on cold tolerance or transcriptional/translational regulation upon temperature downshifts have not been studied yet. It will be interesting to test freeze-tolerance of hosts overexpressing these dual domain Csp-like proteins.

Introduction of CspB<sub>Pi</sub> into other organisms has potential industrial applications, including increased cold-resistance of nitrogen-fixing bacteria, such as *Rhizobium* and cyanobacteria, and the survival of starter cultures after storage at freezing temperatures. The long-pursued development of frozen dough may be achievable by improving the freeze-tolerance of baker's yeast. The possible application of CspB<sub>Pi</sub> does not need to be limited to industrially important microorganisms and it may be introduced into plants to enhance their viability at low temperatures and increase their economic value.

### Conflicts of interest

The authors declare no conflicts of interest.

### Acknowledgments

The authors greatly appreciate the gift of *E. coli* BX04 from Dr. Sangita Phadtare and Dr. Massayori Inouye (UMDNJ). This work was supported by the Korea Research Foundation Grant funded by the Korean Government (KRF-2014-011146 and KRF-2015R1D1A1 A01058206).

### REFERENCES

- Jones PG, VanBogelen RA, Neidhardt FC. Induction of proteins in response to low temperature in *Escherichia coli*. *J Bacteriol.* 1987;169:2092–2095.
- Phadtare S. Recent developments in bacterial cold-shock response. *Curr Issues Mol Biol.* 2004;6:125–136.
- D'Amico S, Collins T, Marx J-C, Feller G, Gerday C. Psychrophilic microorganisms: challenges for life. *EMBO Rep.* 2006;7:385–389.
- Brinkmeyer R, Knittel K, Jurgens J, Weyland H, Amann R, Helmke E. Diversity and structure of bacterial communities in Arctic versus Antarctic pack ice. *Appl Environ Microbiol.* 2003;69:6610–6619.
- Russell NJ. Psychrophilic bacteria-molecular adaptations of membrane lipids. *Comp Biochem Physiol Physiol.* 1997;118:489–493.
- Jiang W, Hou Y, Inouye M. CspA, the major cold-shock protein of *Escherichia coli*, is an RNA chaperone. *J Biol Chem.* 1997;272:196–202.
- Jones PG, Krah R, Tafuri SR, Wolffe AP. DNA gyrase, CS7.4, and the cold shock response in *Escherichia coli*. *J Bacteriol.* 1992;174:5798–5802.
- Schindler T, Graumann PL, Perl D, Ma S, Schmid FX, Marahiel MA. The family of cold shock proteins of *Bacillus subtilis*. Stability and dynamics in vitro and in vivo. *J Biol Chem.* 1999;274:3407–3413.
- Lim J, Thomas T, Cavicchioli R. Low temperature regulated DEAD-box RNA helicase from the Antarctic archaeon, *Methanococcoides burtonii*. *J Mol Biol.* 2000;297(3):553–567.
- Tosco A, Birolo L, Madonna S, Lolli G, Sannia G, Marino G. GroEL from the psychrophilic bacterium *Pseudoalteromonas haloplanktis* TAC 125: molecular characterization and gene cloning. *Extremophiles.* 2003;7:1372–1381.
- Yoshimune K, Galkin A, Kulakova L, Yoshimura T, Esaki N. Cold-active DnaK of an Antarctic psychrotroph *Shewanella* Sp. Ac10 supporting the growth of dnaK-null mutant of *Escherichia coli* at cold temperatures. *Extremophiles.* 2005;9:145–150.
- Suzuki Y, Haruki M, Takano K, Morikawa M, Kanaya S. Possible involvement of an FKBP family member protein from a psychrotrophic bacterium *Shewanella* sp. SIB1 in cold adaptation. *Eur J Biochem.* 2004;271:1372–1381.
- Jia Z, Davies PL. Antifreeze proteins: an unusual receptor–ligand interaction. *Trends Biochem Sci.* 2002;27:101–106.
- Nichols CA, Guezennec J, Bowman JP. Bacterial exopolysaccharides from extreme marine environments with special consideration of the southern ocean, sea ice, and deep-sea hydrothermal vents: a review. *Mar Biotechnol.* 2005;7(4):253–271.
- Rabus R, Ruepp A, Frickey T, et al. The genome of *Desulfotalea psychrophila*, a sulfate-reducing bacterium from permanently cold Arctic sediments. *Environ Microbiol.* 2004;6(9):887–902.
- Uh J-H, Jung YH, Im H. Rescue of a cold-sensitive mutant at low temperatures by cold shock proteins from *Polaribacter irgensii* KOPRI 22228. *J Microbiol.* 2010;48:798–802.
- Xia B, Ke H, Inouye M. Acquisition of cold sensitivity by quadruple deletion of the *cspA* family and its suppression by PNPase S1 domain in *Escherichia coli*. *Mol Microbiol.* 2001;40:179–188.
- Jung CH, Im H. A recombinant human  $\alpha_1$ -antitrypsin variant, M-malton, undergoes a spontaneous conformational conversion into a latent form. *J Microbiol.* 2003;41:335–339.
- Sambrook J, Fritsch EF, Maniatis T. *Molecular Cloning: A Laboratory Manual*. 2nd ed. Cold Spring Harbor, New York: Cold Spring Harbor Laboratory Press; 1989.

20. Kim MJ, Lee YK, Lee HK, Im H. Characterization of cold-shock protein A of antarctic *Streptomyces* sp AA8321. *Protein J.* 2007;26:51-59.
21. Jung YH, Yi JY, Jung H, et al. Overexpression of cold shock protein A of *Psychromonas arctica* KOPRI 22215 confers cold-resistance. *Protein J.* 2010;29:136-142.
22. Newkirk K, Feng W, Jiang W, et al. Solution NMR structure of the major cold shock protein (CspA) from *Escherichia coli*: identification of a binding epitope for DNA. *Proc Natl Acad Sci USA.* 1994;91:5114-5118.
23. Schindelin H, Marahiel MA, Heinemann U. Universal nucleic acid-binding domain revealed by crystal structure of the *B. subtilis* major cold-shock protein. *Nature.* 1993;364:154-168.
24. Schröder K, Graumann P, Schnuchel A, Holak TA, Marahiel MA. Mutational analysis of the putative nucleic acid-binding surface of the cold-shock domain, CspB, revealed an essential role of aromatic and basic residues in binding of single-stranded DNA containing the Y-box motif. *Mol Microbiol.* 1995;16:699-708.
25. Hillier BJ, Rodriguez HM, Gregoret LM. Coupling protein stability and protein function in *Escherichia coli* CspA. *Fold Des.* 1998;3:87-93.
26. Giaquinto L, Curmi PM, Siddiqui KS, et al. Structure and function of cold shock proteins in archaea. *J Bacteriol.* 2007;189(15):5738-5748.
27. Thompson JD, Higgins DG, Gibson TJ. CLUSTAL W: improving the sensitivity of progressive multiple sequence alignment through sequence weighting, position-specific gap penalties and weight matrix choice. *Nucleic Acids Res.* 1994;22:4673-4680.