

ADOPTED: 24 March 2022

doi: 10.2903/j.efsa.2022.7280

Safety assessment of the process PET Verpackungen Deutschland, based on the EREMA basic and Polymetrix SSP leaN technology, used to recycle post-consumer PET into food contact materials

EFSA Panel on Food Contact Materials, Enzymes and Processing Aids (CEP),
Claude Lambré, José Manuel Barat Baviera, Claudia Bolognesi, Andrew Chesson,
Pier Sandro Cocconcelli, Riccardo Crebelli, David Michael Gott, Konrad Grob,
Marcel Mengelers, Alicja Mortensen, Gilles Rivière, Inger-Lise Steffensen, Christina Tlustos,
Henk Van Loveren, Laurence Vernis, Holger Zorn, Vincent Dudler, Maria Rosaria Milana,
Constantine Paspapyrides, Maria de Fátima Tavares Poças, Alexandros Lioupis and
Evgenia Lampi

Abstract

The EFSA Panel on Food Contact Materials, Enzymes and Processing Aids (CEP) assessed the safety of the recycling process PET Verpackungen Deutschland (EU register number RECYC202), which uses the EREMA basic and Polymetrix SSP leaN technology. The input is hot caustic washed and dried poly (ethylene terephthalate) (PET) flakes mainly originating from collected post-consumer PET containers, including no more than 5% PET from non-food consumer applications. The flakes are heated in a continuous reactor under vacuum before being extruded and pelletised. The crystallised pellets are then preheated and submitted to solid-state polycondensation (SSP) in a continuous reactor under high temperature and gas flow. Having examined the challenge tests provided, the Panel concluded that the continuous reactor (step 2) and the SSP reactor (step 4) are critical in determining the decontamination efficiency of the process. The operating parameters to control the performance are temperature, pressure and residence time for step 2 and temperature, residence time and velocity of inert gas for step 4. It was demonstrated that this recycling process is able to ensure that the level of migration of potential unknown contaminants into food is below the conservatively modelled migration of 0.1 µg/kg food. Therefore, the Panel concluded that the recycled PET obtained from this process is not of safety concern, when used at up to 100% for the manufacture of materials and articles for contact with all types of foodstuffs, including drinking water, for long-term storage at room temperature, with or without hotfill. The final articles made of this recycled PET are not intended to be used in microwave and conventional ovens and such uses are not covered by this evaluation.

© 2022 Wiley-VCH Verlag GmbH & Co. KgaA on behalf of the European Food Safety Authority.

Keywords: EREMA basic and Polymetrix SSP leaN, PET Verpackungen Deutschland GmbH, food contact materials, plastic, poly(ethylene terephthalate) (PET), recycling process, safety assessment

Requestor: Bundesamt für Verbraucherschutz und Lebensmittelsicherheit (BVL)

Question number: EFSA-Q-2020-00418

Correspondence: fip@efsa.europa.eu

Panel members: José Manuel Barat Baviera, Claudia Bolognesi, Andrew Chesson, Pier Sandro Cocconcelli, Riccardo Crebelli, David Michael Gott, Konrad Grob, Claude Lambré, Evgenia Lampi, Marcel Mengelers, Alicja Mortensen, Gilles Rivière, Vittorio Silano (until 21 December 2020[†]), Inger-Lise Steffensen, Christina Tlustos, Henk Van Loveren, Laurence Vernis and Holger Zorn.

Note: The full opinion will be published in accordance with Article 10(6) of Regulation (EC) No 1935/2004 once the decision on confidentiality, in line with Article 20(3) of the Regulation, will be received from the European Commission. Technical details on recycling steps 3 and 4 (Section 3.3.1), details of the performed challenge test (Section 3.3.2) and the text and table on the operational parameters (Appendix C) have been provided under confidentiality and they are redacted awaiting the decision of the Commission.

Declarations of interest: The declarations of interest of all scientific experts active in EFSA's work are available at <https://ess.efsa.europa.eu/doi/doiweb/doisearch>.

Suggested citation: EFSA CEP Panel (EFSA Panel on Food Contact Materials, Enzymes and Processing Aids), Lambré C, Barat Baviera JM, Bolognesi C, Chesson A, Cocconcelli PS, Crebelli R, Gott DM, Grob K, Mengelers M, Mortensen A, Rivière G, Steffensen I-L, Tlustos C, Van Loveren H, Vernis L, Zorn H, Dudler V, Milana MR, Papaspyrides C, Tavares Poças MF, Lioupis A and Lampi E, 2022. Scientific Opinion on the safety assessment of the process PET Verpackungen Deutschland, based on the EREMA basic and Polymetrix SSP leaN technology, used to recycle post-consumer PET into food contact materials. EFSA Journal 2022;20(5):7280, 14 pp. <https://doi.org/10.2903/j.efsa.2022.7280>

ISSN: 1831-4732

© 2022 Wiley-VCH Verlag GmbH & Co. KGaA on behalf of the European Food Safety Authority.

This is an open access article under the terms of the [Creative Commons Attribution-NoDerivs](https://creativecommons.org/licenses/by-nd/4.0/) License, which permits use and distribution in any medium, provided the original work is properly cited and no modifications or adaptations are made.



The EFSA Journal is a publication of the European Food Safety Authority, a European agency funded by the European Union.



[†] Deceased

Table of contents

Abstract.....	1
1. Introduction.....	4
1.1. Background and Terms of Reference as provided by the requestor.....	4
2. Data and methodologies.....	4
2.1. Data.....	4
2.2. Methodologies.....	5
3. Assessment.....	5
3.1. General information.....	5
3.2. Description of the process.....	5
3.2.1. General description.....	5
3.2.2. Characterisation of the input.....	6
3.3. EREMA basic and Polymetrix SSP leaN technology.....	6
3.3.1. Description of the main steps.....	6
3.3.2. Decontamination efficiency of the recycling process.....	7
3.4. Discussion.....	9
4. Conclusions.....	10
5. Recommendation.....	10
6. Documentation provided to EFSA.....	11
References.....	11
Abbreviations.....	11
Appendix A – Technical data of the washed flakes as provided by the applicant.....	12
Appendix B – Relationship between the key parameters for the evaluation scheme (EFSA CEF Panel, 2011)....	13
Appendix C – Table on operational parameters (Confidential Information).....	14

1. Introduction

1.1. Background and Terms of Reference as provided by the requestor

Recycled plastic materials and articles shall only be placed on the market if the recycled plastic is from an authorised recycling process. Before a recycling process is authorised, European Food Safety Authority (EFSA)'s opinion on its safety is required. This procedure has been established in Article 5 of Regulation (EC) No 282/2008¹ on recycled plastic materials intended to come into contact with foods and Articles 8 and 9 of Regulation (EC) No 1935/2004² on materials and articles intended to come into contact with food.

According to this procedure, the industry submits applications to the competent authorities of Member States, which transmit the applications to EFSA for evaluation.

In this case, EFSA received from the Bundesamt für Verbraucherschutz und Lebensmittelsicherheit (BVL), an application for evaluation of the recycling process PET Verpackungen Deutschland, European Union (EU) register No RECYC202. The request has been registered in EFSA's register of received questions under the number EFSA-Q-2020-00418. The dossier was submitted on behalf of PET Verpackungen Deutschland GmbH, Germany.

According to Article 5 of Regulation (EC) No 282/2008 on recycled plastic materials intended to come into contact with foods, EFSA is required to carry out risk assessments on the risks originating from the migration of substances from recycled food contact plastic materials and articles into food and deliver a scientific opinion on the recycling process examined.

According to Article 4 of Regulation (EC) No 282/2008, EFSA will evaluate whether it has been demonstrated in a challenge test, or by other appropriate scientific evidence, that the recycling process is able to reduce the contamination of the plastic input to a concentration that does not pose a risk to human health. The poly(ethylene terephthalate) (PET) materials and articles used as input of the process as well as the conditions of use of the recycled PET make part of this evaluation.

2. Data and methodologies

2.1. Data

The applicant has submitted a dossier following the 'EFSA guidelines for the submission of an application for the safety evaluation of a recycling process to produce recycled plastics intended to be used for the manufacture of materials and articles in contact with food, prior to its authorisation' (EFSA, 2008).

Additional information was provided by the applicant during the assessment process in response to requests from EFSA sent on 20 November 2020, 6 July 2021 and 15 November 2021 (see ['Documentation provided to EFSA'](#)).

The following information on the recycling process was provided by the applicant and used for the evaluation:

- General information:
 - general description,
 - existing authorisations.
- Specific information:
 - recycling process,
 - characterisation of the input,
 - determination of the decontamination efficiency of the recycling process,
 - characterisation of the recycled plastic,
 - intended application in contact with food,
 - compliance with the relevant provisions on food contact materials and articles,
 - process analysis and evaluation,
 - operating parameters.

¹ Commission Regulation (EC) No 282/2008 of 27 March 2008 on recycled plastic materials and articles intended to come into contact with foods and amending Regulation (EC) No 2023/2006. OJ L 86, 28.3.2008, p. 9–18.

² Regulation (EC) No 1935/2004 of the European parliament and of the council of 27 October 2004 on materials and articles intended to come into contact with food and repealing Directives 80/590/EEC and 89/109/EEC. OJ L 338, 13.11.2004, p. 4–17.

2.2. Methodologies

The principles followed for the evaluation are described here. The risks associated with the use of recycled plastic materials and articles in contact with food come from the possible migration of chemicals into the food in amounts that would endanger human health. The quality of the input, the efficiency of the recycling process to remove contaminants as well as the intended use of the recycled plastic are crucial points for the risk assessment (EFSA, 2008).

The criteria for the safety evaluation of a mechanical recycling process to produce recycled PET intended to be used for the manufacture of materials and articles in contact with food are described in the scientific opinion developed by the EFSA Panel on Food Contact Materials, Enzymes, Flavourings and Processing Aids (EFSA CEF Panel, 2011). The principle of the evaluation is to apply the decontamination efficiency of a recycling technology or process, obtained from a challenge test with surrogate contaminants, to a reference contamination level for post-consumer PET, conservatively set at 3 mg/kg PET for contaminants resulting from possible misuse. The resulting residual concentration of each surrogate contaminant in recycled PET (C_{res}) is compared with a modelled concentration of the surrogate contaminants in PET (C_{mod}). This C_{mod} is calculated using generally recognised conservative migration models so that the related migration does not give rise to a dietary exposure exceeding 0.0025 µg/kg body weight (bw) per day (i.e. the human exposure threshold value for chemicals with structural alerts for genotoxicity), below which the risk to human health would be negligible. If the C_{res} is not higher than the C_{mod} , the recycled PET manufactured by such recycling process is not considered of safety concern for the defined conditions of use (EFSA CEF Panel, 2011).

The assessment was conducted in line with the principles described in the EFSA Guidance on transparency in the scientific aspects of risk assessment (EFSA, 2009) and considering the relevant guidance from the EFSA Scientific Committee.

3. Assessment

3.1. General information³

According to the applicant, the recycling process PET Verpackungen Deutschland is intended to recycle food grade PET containers using the EREMA basic and Polymetrix SSP leaN technology. The recycled PET is intended to be used at up to 100% for the manufacture of materials and articles for direct contact with all kinds of foodstuffs such as bottles for mineral water, soft drinks, fruit juices and beer for long-term storage at room temperature, with or without hotfill. The final articles are not intended to be used in microwave and conventional ovens.

3.2. Description of the process

3.2.1. General description⁴

The recycling process PET Verpackungen Deutschland produces recycled PET pellets from PET materials originating from post-consumer collection systems (kerbside and deposit collection systems).

The recycling process comprises the four steps below.

Input

- In step 1, the post-consumer PET is sorted and processed into hot caustic washed and dried flakes. This step is performed by third parties.

Decontamination and production of recycled PET material

- In step 2, the flakes are crystallised and decontaminated under high temperature and vacuum.
- In step 3, the decontaminated flakes are extruded to produce pellets which are then crystallised.
- In step 4, the pellets are preheated and then decontaminated during solid-state polycondensation (SSP) under high temperature and inert gas flow.

The operating conditions of the process have been provided to EFSA.

³ Technical dossier, Sections 3.1. and 3.1.1.

⁴ Technical dossier, Sections 3.1.1 and 3.2.4.

Pellets, the final product of the process, are checked against technical requirements, such as intrinsic viscosity, colour and black spots.

3.2.2. Characterisation of the input⁵

According to the applicant, the input material for the recycling process PET Verpackungen Deutschland consists of hot washed and dried flakes obtained from PET materials, e.g. bottles, previously used for food packaging, from post-consumer collection systems (kerbside and deposit systems). A small fraction may originate from non-food applications. According to the applicant, the proportion of this non-food container fraction depends on the collection system and will be no more than 5%.

Technical specifications on the hot washed and dried flakes are provided, such as information on physical properties and residual contents of moisture, poly(vinyl chloride) (PVC), polyolefins, glue, cellulose and metals (see Appendix A).

3.3. EREMA basic and Polymetrix SSP lean technology

3.3.1. Description of the main steps⁶

The general scheme of the EREMA basic and Polymetrix SSP lean technology, as provided by the applicant, is reported in Figure 1. The steps are:

- Decontamination in a continuous reactor (step 2):

The flakes are continuously fed into a reactor equipped with a rotating device, running under high temperature and vacuum for a pre-defined minimum residence time.

- Extrusion of the decontaminated flakes (step 3):

The flakes, continuously introduced from the previous reactor, are molten in the extruder.

The pellets are then crystallised.

- SSP (step 4): The crystallised pellets are preheated and fed to a reactor running under high temperature and inert gas flow for a predefined residence time.

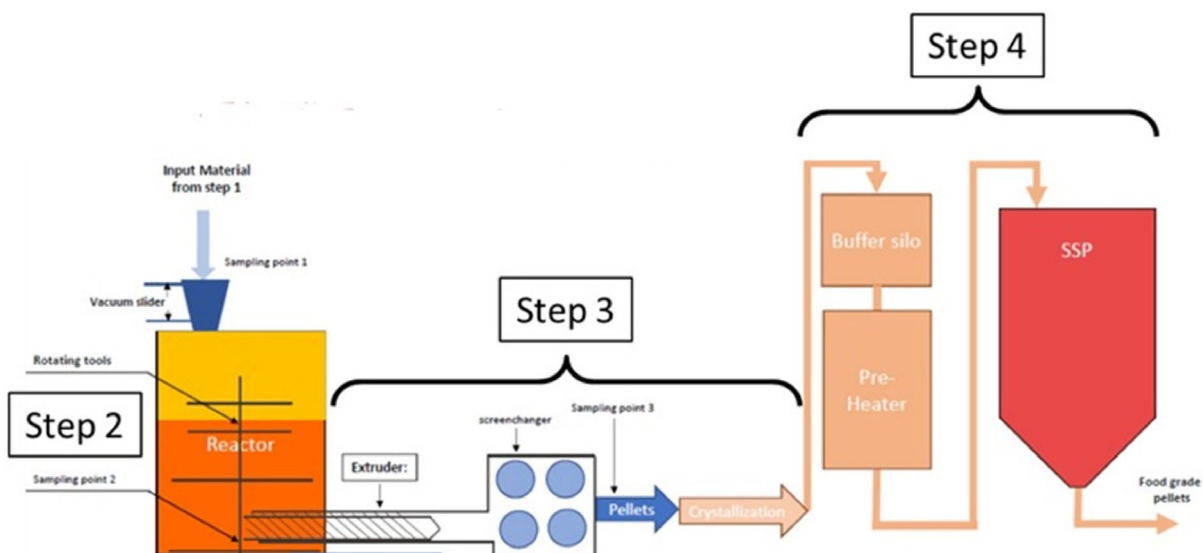


Figure 1: General scheme of the technology (provided by the applicant)

⁵ Technical dossier, Section 3.2.2.

⁶ Technical dossier, Section 3.2.1.

The process is run under defined operating parameters⁷ of temperature, pressure, velocity of inert gas and residence time.

3.3.2. Decontamination efficiency of the recycling process⁸

To demonstrate the decontamination efficiency of the recycling process PET Verpackungen Deutschland, challenge tests on steps 2 and 4 were submitted to the EFSA and used in combination.

The surrogates used in the challenge tests were selected in agreement with the EFSA guidelines (EFSA CEF Panel, 2011) and in accordance with the recommendations of the US Food and Drug Administration (FDA, 2006). The surrogates include different molecular masses and polarities to cover possible chemical classes of contaminants of concern and were demonstrated to be suitable to monitor the behaviour of PET during recycling (EFSA, 2008).

For the challenge test of step 2, 25 mL of each of the liquid surrogates (toluene, chlorobenzene, chloroform, methyl salicylate and phenyl cyclohexane) and 25 g of each of the solid surrogates (benzophenone and methyl stearate) were added to 25 kg of conventionally recycled⁹ post-consumer PET flakes. Eight such batches were produced and stored for 7 days at 50°C with periodical agitation. Afterwards, the contaminated flakes were rinsed with 10% ethanol and the concentrations of the surrogates in this material were determined.

Step 2 was challenged at an industrial-scale plant. The contaminated flakes (200 kg) were fed into the decontamination reactor (step 2) and a sample was taken after step 2. Decontaminated flakes after step 2 were extruded (step 3; not challenged) to produce pellets.

Instead of being operated continuously (as it would be in the industrial process), the step 2 was run in **batch** mode in the challenge test. The Panel considered that the **batch** reactor ran at the same temperature and pressure as is foreseen for the industrial process. In order to prove the representativeness of the residence time of the flakes in the challenge test, an additional challenge test running in continuous mode was provided. In this test, a mixture of green (contaminated) and clear (non-contaminated) flakes was challenged and the ratio of green and clear flakes at the exit of the reactor at different residence times was determined. Based on the results, the Panel concluded that the residence time in the challenge test **batch** reactor corresponded to the minimum residence time in the industrial continuous reactor.

The decontamination efficiencies of step 2 (EREMA reactor) were calculated from the concentration of surrogates before and after the reactor (Table 1).

Table 1: Efficiency of the decontamination of the EREMA reactor in the challenge test (step 2)

Surrogates	Concentration of surrogates before step 2 (mg/kg PET)	Concentration of surrogates after step 2 (mg/kg PET)	Decontamination efficiency (%)
Toluene	357.0	57.0	84.0
Chloroform	165.6	78.0	52.9
Chlorobenzene	641.1	100.6	84.3
Phenyl cyclohexane	588.2	140.1	76.2
Methyl salicylate	900.6	112.6	87.5
Benzophenone	852.1	171.4	79.9
Methyl stearate	1279.9	205.2	84.0

PET: poly(ethylene terephthalate).

The Polymetrix SSP technology (step 4) was challenged at pilot plant scale. Contaminated PET pellets were produced during extrusion by adding toluene, chlorobenzene, phenylcyclohexane, benzophenone and methyl stearate. PET was spiked with a solution containing the surrogates in a pilot plant twin screw extruder without degassing, resulting in a homogenous contamination of the pellets. To prevent possible agglomeration during the challenge test the amorphous pellets were crystallised.

⁷ In accordance with Art. 9 and 20 of Regulation (EC) No 1935/2004 the parameters were provided to EFSA by the applicant and made available to the Member States and the European Commission (see Appendix C).

⁸ Technical dossier, Section 3.2.3, Appendices E1, E2 and F.

⁹ Conventional recycling commonly includes sorting, grinding, washing and drying steps and produces washed and dried flakes.

The concentrations of the surrogates were determined in these crystallised pellets used as starting material for the challenge test.

Three challenge tests were performed on the SSP (step 4), applying three different decontamination temperatures and various residence times. The temperature applied in step 4 of the industrial process corresponds to the lowest temperature used in the challenge tests.

The Panel considered that, since the reactor in the process works without significant mixing, this process will result in a comparable cleaning efficiency as the process of the challenge test, provided comparable temperature, inert gas conditions and residence time are applied.

The gas velocity was several times higher than in the process to compensate for heat loss, but the Panel accepted the argument that above the gas velocity used in production, the diffusion within the pellets is limiting the removal of the contaminants, i.e. that the gas velocity no longer influences the decontamination (Huang and Walsh, 1998).

The contaminated PET pellets, which were clear (without added colour), were mixed with a many times larger amount of blue, non-contaminated pellets in order to provide the quantity of material needed for the pilot plant. From the samples drawn after the SSP (step 4), only the clear contaminated pellets were analysed for their residual concentrations of the applied surrogates. The applicant provided data on a challenge test with only contaminated pellets run at conditions corresponding to one of the challenge tests described above. Data were similar, indicating negligible effect by cross-contamination.¹⁰

The decontamination efficiencies of step 4 (SSP reactor) were calculated from the concentration of surrogates before and after the reactor (Table 2).

Table 2: Efficiency of the decontamination of the Polymetrix SSP reactor in the challenge test (step 4)

Surrogates	Concentration of surrogates before step 4 (mg/kg PET)	Concentration of surrogates after step 4 (mg/kg PET)	Decontamination efficiency (%)
Toluene	8.8	< 0.1 ^(a)	> 98.9
Chlorobenzene	71.5	2.6	96.4
Phenyl cyclohexane	614.6	95.1	84.5
Benzophenone	565.0	68.6	87.7
Methyl stearate	623.1	58.1	90.7

PET: poly(ethylene terephthalate); SSP: solid-state polycondensation.

(a): Not detected at the limits of detection given.

A combined decontamination efficiency of the process was then calculated from the decontamination efficiencies of steps 2 and 4 (Table 3).

Table 3: Combined efficiency of decontamination by the EREMA basic and Polymetrix SSP lean technology in the challenge test

Surrogates	Decontamination efficiency (%) step 2	Decontamination efficiency (%) step 4	Combined decontamination efficiency (%)
Toluene	84.0	> 98.9	> 99.8
Chlorobenzene	84.3	96.4	99.4
Phenyl cyclohexane	76.2	84.5	96.3
Benzophenone	79.9	87.7	98.5
Methyl stearate	84.0	90.7	98.5

PET: poly(ethylene terephthalate).

¹⁰ 'Cross-contamination' (partitioning between clear and blue flakes), as meant in the Scientific Opinion on 'the criteria to be used for safety evaluation of a mechanical recycling process to produce recycled PET intended to be used for manufacture of materials and articles in contact with food', is the transfer of surrogate contaminants from the initially contaminated to the initially not contaminated material (EFSA CEF Panel, 2011).

As shown in Table 3, the decontamination efficiency ranged from 96.3% for phenyl cyclohexane to > 99.8% for toluene.

3.4. Discussion

Considering the high temperatures used during the process, the possibility of contamination by microorganisms can be discounted. Therefore, this evaluation focuses on the chemical safety of the final product.

Technical data, such as information on physical properties and residual contents of moisture, poly (vinyl chloride) (PVC), polyolefins, glue, cellulose and metals, were provided for the input materials (i.e. washed and dried flakes, step 1). These are produced from PET containers, e.g. bottles, previously used for food packaging collected through post-consumer collection systems. However, a small fraction may originate from non-food applications such as bottles for soap, mouthwash or kitchen hygiene agents. According to the applicant, the collection system and the process are managed in such a way that in the input stream this fraction will be no more than 5%, as recommended by the EFSA CEF Panel in its 'Scientific opinion on the criteria to be used for safety evaluation of a mechanical recycling process to produce recycled PET intended to be used for manufacture of materials and articles in contact with food' (EFSA CEF Panel, 2011).

The process is adequately described. The washing and drying of the flakes from the collected PET containers (step 1) is conducted by third parties and, according to the applicant, this step is under control. The EREMA basic and Polymetrix SSP lean technology comprises the continuous decontamination reactor (step 2), the extrusion and crystallisation (step 4) and preheating and decontamination in the SSP reactor (step 4). The operating parameters of temperature, pressure, residence time, and velocity of inert gas have been provided to EFSA.

Challenge tests to measure the decontamination efficiency were conducted in a small industrial-scale EREMA reactor (step 2) and a pilot plant Polymetrix SSP reactor (step 4). The reactors were operated under pressure, temperature and gas flow conditions equivalent to those of the commercial process. Step 2 was conducted with only contaminated flakes. Potential cross-contamination between clear contaminated and blue non-contaminated pellets used for the challenge tests of step 4 was shown to have had negligible impact on the final decontamination efficiency. The Panel considered that these challenge tests were performed correctly according to the recommendations in the EFSA guidelines (EFSA, 2008) and that steps 2 and 4 are critical for the decontamination efficiency of the process. Consequently, temperature, pressure and residence time of step 2 and temperature, residence time and velocity of inert gas of step 4 should be controlled to guarantee the performance of the decontamination (Appendix C).

The decontamination efficiencies obtained for each surrogate, ranging from 96.3% to > 99.8%, have been used to calculate the residual concentrations of potential unknown contaminants in PET (C_{res}) according to the evaluation procedure described in the 'Scientific opinion on the criteria to be used for safety evaluation of a mechanical recycling process to produce recycled PET' (EFSA CEF Panel, 2011; Appendix B). By applying the decontamination percentages to the reference contamination level of 3 mg/kg PET, the C_{res} for the different surrogates was obtained (Table 4).

According to the evaluation principles (EFSA CEF Panel, 2011), the dietary exposure must not exceed 0.0025 $\mu\text{g}/\text{kg}$ bw per day, below which the risk to human health is considered negligible. The C_{res} value should not exceed the modelled concentration in PET (C_{mod}) that, after 1 year at 25°C, could result in a migration giving rise to a dietary exposure exceeding 0.0025 $\mu\text{g}/\text{kg}$ bw per day. Because the recycled PET is intended for manufacture of bottles for mineral water and beverages the scenario for infants has been applied (water could be used to prepare infant formula). A maximum dietary exposure of 0.0025 $\mu\text{g}/\text{kg}$ bw/day corresponds to a maximum migration of 0.1 $\mu\text{g}/\text{kg}$ of a contaminant substance into the infant's food and has been used to calculate C_{mod} (EFSA CEF Panel, 2011). C_{res} reported in Table 4 is calculated for 100% recycled PET, for which the risk to human health is demonstrated to be negligible. The results of these calculations are shown in Table 4. The relationship between the key parameters for the evaluation scheme is reported in Appendix B.

Table 4: Decontamination efficiencies from the challenge tests (combined from steps 2 and 4), residual concentrations of the surrogates in the recycled PET (C_{res}) and calculated concentrations of the surrogates in PET (C_{mod}) corresponding to a modelled migration of 0.1 $\mu\text{g}/\text{kg}$ food after 1 year at 25°C

Surrogates	Decontamination efficiency (%)	C_{res} for 100% rPET (mg/kg PET)	C_{mod} (mg/kg PET)
Toluene	> 99.8	< 0.01	0.09
Chlorobenzene	99.4	0.02	0.09
Phenyl cyclohexane	96.3	0.11	0.14
Benzophenone	98.5	0.05	0.16
Methyl stearate	98.5	0.04	0.32

PET: poly(ethylene terephthalate); rPET: recycled poly(ethylene terephthalate).

On the basis of the provided data from the challenge test and the applied conservative assumptions, the Panel considered that under the given operating conditions the recycling process using the EREMA basic and Polymetrix SSP V-lean technology is able to ensure that the level of migration of unknown contaminants from the recycled PET into food is below the conservatively modelled migration of 0.1 $\mu\text{g}/\text{kg}$ food. At this level, the risk to human health is considered negligible when the recycled PET is used at up to 100% to produce materials and articles intended for contact with all types of foodstuffs including drinking water.

4. Conclusions

The Panel considered that the process PET Verpackungen Deutschland, using the EREMA basic and Polymetrix SSP lean technology, is adequately characterised and that the main steps used to recycle the PET flakes into decontaminated PET pellets have been identified. Having examined the challenge tests provided, the Panel concluded that temperature, pressure and residence time in the continuous reactor of step 2 and temperature, velocity of inert gas and residence time of the [REDACTED] SSP reactor of step 4, are critical for the decontamination efficiency.

The Panel concluded that the recycling process PET Verpackungen Deutschland is able to reduce foreseeable accidental contamination of post-consumer food contact PET to a concentration that does not give rise to concern for a risk to human health if:

- i) it is operated under conditions that are at least as severe as those applied in the challenge tests used to measure the decontamination efficiency of the process;
- ii) the input material of the process is washed and dried post-consumer PET flakes originating from materials and articles that have been manufactured in accordance with the EU legislation on food contact materials and contains no more than 5% of PET from non-food consumer applications;
- iii) the recycled PET is used at up to 100% for the manufacture of materials and articles for contact with all types of foodstuffs, including drinking water, for long-term storage at room temperature, with or without hotfill.

The final articles made of this recycled PET are not intended to be used in microwave and conventional ovens and such uses are not covered by this evaluation.

5. Recommendation

The Panel recommended periodic verification that the input to be recycled originates from materials and articles that have been manufactured in accordance with the EU legislation on food contact materials and that the proportion of PET from non-food consumer applications is no more than 5%. This adheres to good manufacturing practice and the Regulation (EC) No 282/2008, Art. 4b. Critical steps in recycling should be monitored and kept under control. In addition, supporting documentation should be available on how it is ensured that the critical steps are operated under conditions at least as severe as those in the challenge test used to measure the decontamination efficiency of the process.

6. Documentation provided to EFSA

Dossier 'PET Verpackungen Deutschland'. April 2021. Submitted on behalf of PET Verpackungen Deutschland GmbH, Germany.

Additional information, October 2021. Submitted by PET Verpackungen Deutschland GmbH, Germany.

Additional information, December 2021. Submitted by PET Verpackungen Deutschland GmbH, Germany.

References

- EFSA (European Food Safety Authority), 2008. Guidelines for the submission of an application for safety evaluation by the EFSA of a recycling process to produce recycled plastics intended to be used for manufacture of materials and articles in contact with food, prior to its authorisation. EFSA Journal 2008,6(7):717, 12 pp. <https://doi.org/10.2903/j.efsa.2008.717>
- EFSA (European Food Safety Authority), 2009. Guidance of the Scientific Committee on transparency in the scientific aspects of risk assessments carried out by EFSA. Part2: general principles. EFSA Journal 2009;7(5):1051, 22 pp. <https://doi.org/10.2903/j.efsa.2009.1051>
- EFSA CEF Panel (EFSA Panel on Food Contact Materials, Enzymes, Flavourings and Processing Aids), 2011. Scientific opinion on the criteria to be used for safety evaluation of a mechanical recycling process to produce recycled PET intended to be used for manufacture of materials and articles in contact with food. EFSA Journal 2011;9(7):2184, 25 pp. <https://doi.org/10.2903/j.efsa.2011.2184>
- FDA (Food and Drug Administration), 2006. Guidance for industry: use of recycled plastics in food packaging: chemistry considerations. Available online: <https://www.fda.gov/regulatory-information/search-fda-guidance-documents/guidance-industry-use-recycled-plastics-food-packaging-chemistry-considerations>
- Huang B and Walsh JJ, 1998. Solid-phase polymerisation mechanism of poly(ethylene terephthalate) affected by gas flow velocity and particle size. Polymer, 39, 6991–6999.

Abbreviations

bw	body weight
CEF	Panel on Food Contact Materials, Enzymes, Flavourings and Processing Aids
CEP	Panel on Food Contact Materials, Enzymes and Processing Aids
C_{mod}	modelled concentration in PET
C_{res}	residual concentration in PET
iV	intrinsic viscosity
PET	poly(ethylene terephthalate)
PVC	poly(vinyl chloride)
SSP	solid-state polycondensation

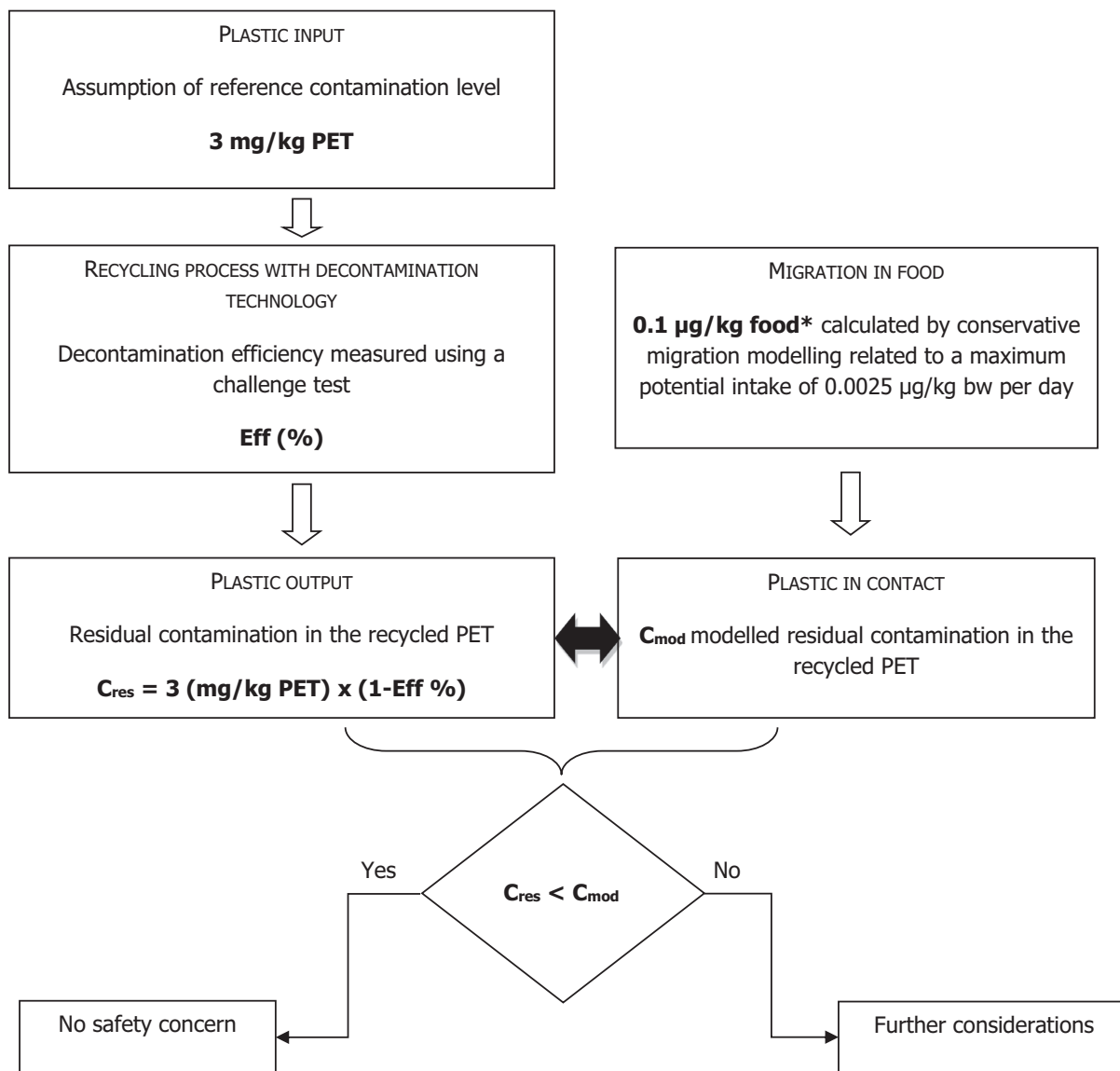
Appendix A – Technical data of the washed flakes as provided by the applicant¹¹

Parameter	Value
Moisture max.	1.5%
Moisture variation	± 0.5%/h
Bulk density	250–400 kg/m ³
Material temperature	10–60°C
PVC max.	50 mg/kg
Glue max.	50 mg/kg
Polyolefins max.	100 mg/kg
Cellulose (paper, wood)	100 mg/kg
Metals max.	100 mg/kg
PET dust max.	0.5%

PVC: poly(vinyl chloride); PET: poly(ethylene terephthalate).

¹¹ Technical dossier, Section 3.2.2.

Appendix B – Relationship between the key parameters for the evaluation scheme (EFSA CEF Panel, 2011)



*Default scenario (infant). For adults and toddlers, the migration criterion will be 0.75 and 0.15 µg/kg food, respectively. The figures are derived from the application of the human exposure threshold value of 0.0025 µg/kg bw per day applying a factor of 5 related to the overestimation of modelling.

Appendix C – Table on operational parameters (Confidential Information)¹²

[Redacted content]

[Redacted]										
[Redacted]	[Redacted]			[Redacted]			[Redacted]			
[Redacted]	[Redacted]	[Redacted]	[Redacted]	[Redacted]	[Redacted]	[Redacted]	[Redacted]	[Redacted]	[Redacted]	[Redacted]
[Redacted]	[Redacted]	[Redacted]	[Redacted]	[Redacted]			[Redacted]	[Redacted]	[Redacted]	[Redacted]
[Redacted]	[Redacted]	[Redacted]	[Redacted]	[Redacted]	[Redacted]	[Redacted]	[Redacted]	[Redacted]	[Redacted]	[Redacted]
[Redacted]	[Redacted]	[Redacted]	[Redacted]	[Redacted]	[Redacted]	[Redacted]	[Redacted]	[Redacted]	[Redacted]	[Redacted]
[Redacted]	[Redacted]	[Redacted]	[Redacted]	[Redacted]	[Redacted]	[Redacted]	[Redacted]	[Redacted]	[Redacted]	[Redacted]

[Redacted content]

¹² Technical report, Section 3.2.1. and Appendix G.