

Novel Tools and Methods

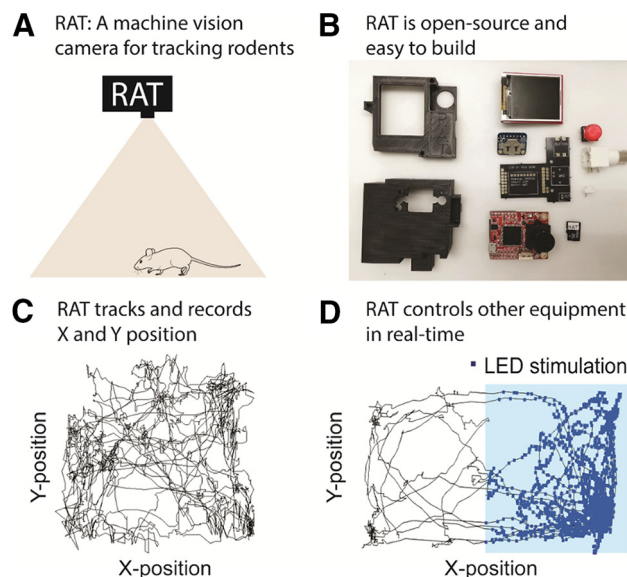
Rodent Arena Tracker (RAT): A Machine Vision Rodent Tracking Camera and Closed Loop Control System

Jonathan Krynitsky,² Alex A. Legaria,⁴  Julia J. Pai,⁴ Marcial Garmendia-Cedillos,² Ghadi Salem,²  Tom Pohida,² and  Alexxai V. Kravitz^{1,3}

<https://doi.org/10.1523/ENEURO.0485-19.2020>

¹National Institute of Diabetes and Digestive and Kidney Diseases, National Institutes of Health, Bethesda, MD 20892, ²Signal Processing and Instrumentation Section, Office of Intramural Research, Center for Information Technology (CIT), National Institutes of Health, Bethesda, MD 20814, ³Departments of Psychiatry, Anesthesiology, and Neuroscience, Washington University in St. Louis, St. Louis, MO 63110, and ⁴Department of Neuroscience, Washington University in St. Louis, St. Louis MO 63110

Visual Abstract



Video tracking is an essential tool in rodent research. Here, we demonstrate a machine vision rodent tracking camera based on a low-cost, open-source, machine vision camera, the OpenMV Cam M7. We call our device

Significance Statement

Video tracking is a critical tool in behavioral research. Here, we present an open source machine vision tracking device called the rodent arena tracker (RAT). The main advance of our device over what has been previously done with rodent video tracking is that our solution is small and battery powered, versus a tethered computer running a software package. This small form factor (about the size of a point-and-shoot camera) can enable new uses for video tracking, including in places where traditional video tracking solutions would be cumbersome or not possible.

the rodent arena tracker (RAT), and it is a pocket-sized machine vision-based position tracker. The RAT does not require a tethered computer to operate and costs about \$120 per device to build. These features make the RAT scalable to large installations and accessible to research institutions and educational settings where budgets may be limited. The RAT processes incoming video in real-time at 15 Hz and saves x and y positional information to an onboard microSD card. The RAT also provides a programmable multi-function input/output pin that can be used for controlling other equipment, transmitting tracking information in real time, or receiving data from other devices. Finally, the RAT includes a real-time clock (RTC) for accurate time stamping of data files. Real-time image processing averts the need to save video, greatly reducing storage, data handling, and communication requirements. To demonstrate the capabilities of the RAT, we performed three validation studies: (1) a 4-d experiment measuring circadian activity patterns; (2) logging of mouse positional information alongside status information from a pellet dispensing device; and (3) control of an optogenetic stimulation system for a real-time place preference (RTPP) brain stimulation reinforcement study. Our design files, build instructions, and code for the RAT implementation are open source and freely available online to facilitate dissemination and further development of the RAT.

Key words: machine vision; mouse; rodent; tracking; video

Introduction

Video analysis has greatly improved animal behavior monitoring methodologies since its first application in research. In early uses of this technology, human observers watched saved videos and manually quantified the frequency or patterns of various behavioral events. Advances in computer vision led to the development of algorithms that automatically segment video frames and track rodent position across time. Multiple open-source and commercial solutions followed this technological progress (Noldus et al., 2001; Tort et al., 2006; Aguiar et al., 2007; Patel et al., 2014; Lopes et al., 2015; Salem et al., 2015; Samson et al., 2015; Ben-Shaul, 2017; Poffé et al., 2018; Rodriguez et al., 2018; Pennington et al., 2019; Shenk, 2019). More recent advances in machine vision and imaging sensors have enabled automatic identification of behaviors and tracking of specific body parts such as limb or whisker movements (Hong et al., 2015; Huang et al., 2015; Wiltschko et al., 2015; Reeves et al., 2016; Nashaat et al., 2017; Mathis et al., 2018; Salem et al., 2019). Although many groups have developed methods to track rodents via video, with the exception of Nashaat et al. (2017), prior approaches all require a tethered computer for computation, and some require post-recording analysis due to high computational load of the processing applications. Such implementations can

limit flexibility and scalability for high throughput experimental installations.

To circumvent these limitations, we developed the rodent arena tracker (RAT), which is capable of automatically tracking mice in high contrast arenas and using position information to control other devices in real time. Here, we present the design files, software, and validation and testing data to demonstrate the utility of the RAT. While rodent tracking has been accomplished by multiple other systems and corresponding software packages (as referenced above), the RAT device offers several novel and useful features, including: (1) onboard processing with no requirement of a connected computer, simplifying experimental pipelines; (2) battery powered option for wireless use; (3) reduced data storage needs afforded by real-time video processing; (4) low cost of ~\$120 per device; and (5) open-source implementation facilitating experiment reproducibility in other laboratories, as well as future method development.

As proof of concept, we implemented a dynamic thresholding algorithm that is effective at tracking rodents in high contrast arenas. The code is open-source, and the OpenMV camera provides additional libraries to enable more elaborate vision algorithms. Therefore, researchers can develop more elaborate processing methods with this same hardware to address their specific research problems. We also perform three practical use-case studies to demonstrate the utility and capabilities of the RAT in a research setting.

Received November 20, 2019; accepted March 31, 2020; First published April 6, 2020.

The authors declare no competing financial interests.

Author contributions: A.V.K. designed research; A.V.K. performed research; A.V.K. contributed unpublished reagents/analytic tools; A.V.K. analyzed data; A.V.K. wrote the paper.

This work was supported by the National Institutes of Health Intramural Research Program (National Institute of Diabetes and Digestive and Kidney Diseases and Center for Information Technology) and by the Brain and Behavioral Research Foundation (National Alliance for Research on Schizophrenia and Depression Young Investigator; A.V.K.).

Correspondence should be addressed to Alexxai V. Kravitz at alexvai@wustl.edu.

<https://doi.org/10.1523/ENEURO.0485-19.2020>

Copyright © 2020 Krynitsky et al.

This is an open-access article distributed under the terms of the [Creative Commons Attribution 4.0 International license](https://creativecommons.org/licenses/by/4.0/), which permits unrestricted use, distribution and reproduction in any medium provided that the original work is properly attributed.

Materials and Methods

OpenMV camera tracking implementation

The RAT acquisition and real time processing software was programmed in the OpenMV integrated development environment (IDE). The image is processed using the following steps: (1) an image is acquired and saved to a frame buffer; (2) the image is segmented using a dynamic thresholding procedure; (3) contiguous “blobs” of pixels in the image are filtered based on a minimum and maximum size threshold and the centroid information for the largest valid blob is retained as the mouse centroid data; (4) mouse speed is computed using the inter-frame centroid difference;

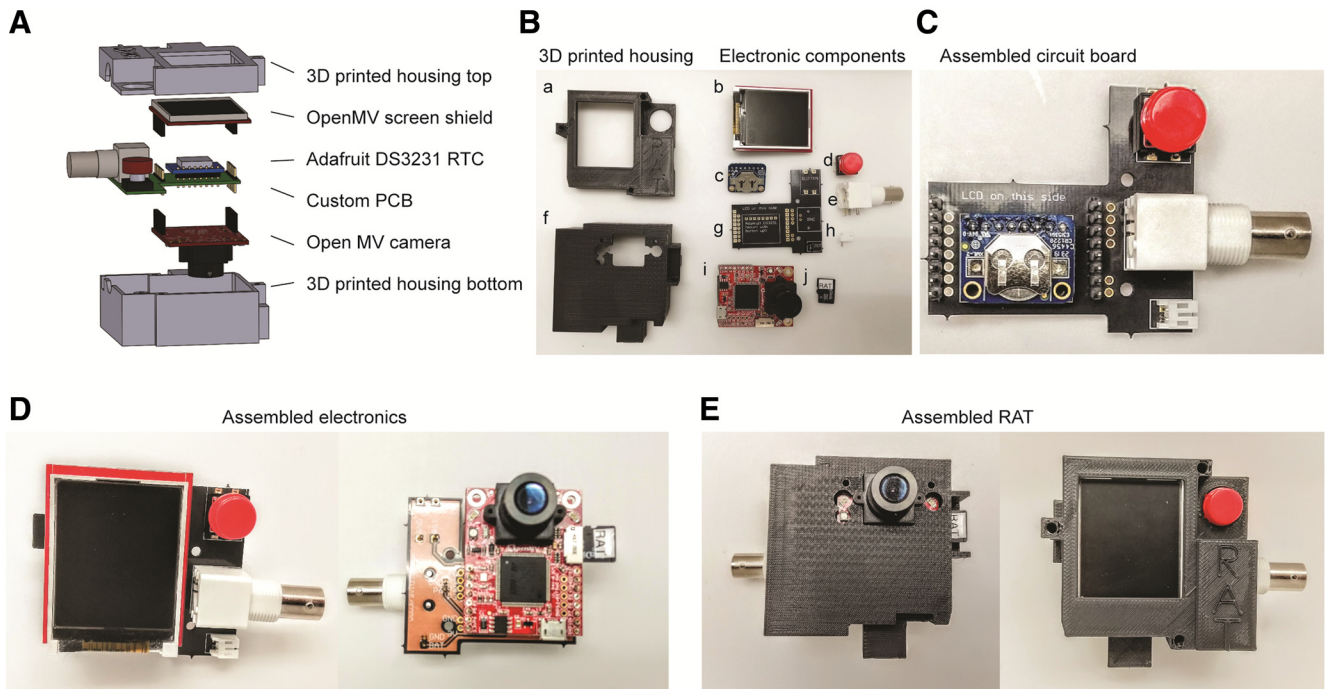


Figure 1. Assembly of the RAT. **A**, Exploded schematic of the major parts for building RAT. **B**, Photograph of the parts for building rat. **a**, 3D-printed housing top. **b**, OpenMV LCD shield. **c**, Adafruit DS3231 RTC module. **d**, Push-button. **e**, BNC connector. **f**, 3D-printed housing bottom. **g**, Custom PCB. **h**, JST 2 pin connector. **i**, OpenMV M7 camera. **j**, MicroSD card with RAT code. **C**, Photograph of assembled RAT circuit board. **D**, Photograph of the assembled RAT electronics. **E**, Photograph of assembled RAT in 3D-printed housing.

(5) the centroid of the mouse position and speed and positional data are overlaid on a feedback image on the LCD screen; (6) the RAT obtains the current date and time from its onboard real-time clock (RTC) module; and (7) data are locally stored in a text file including a per-frame timestamp, centroid values, and computed speed value. In addition to this processing scheme, the dynamic segmentation threshold is updated every 50 frames (~ 4 s) to automatically adjust for potential changes in lighting. Added device functionalities for validation experiments included logging of Transistor-Transistor Logic pulses from an external device on the RAT input/output pin and triggering of an external device from the RAT input/output pin.

Design

The most important component of the RAT hardware is the OpenMV Cam M7 (available at <https://openmv.io>) which acquires and processes images to extract mouse location data (Fig. 1). The OpenMV Cam M7 also has built-in near-infrared (NIR) LEDs which are always on to enable illumination and tracking in dark environments. We designed a printed-circuit board (PCB) with a battery connection, BNC output, header for attachment of an Adafruit RTC module, and push-button for controlling the RAT, as well as a 3D-printed housing (Fig. 1). The RAT can be powered with an external battery, or via its micro USB port. All design files necessary to complete this build (including electronic layout/soldering instructions, Python code, and 3D printing design files) are located at <https://hackaday.io/project/162481-rodent-arena-tracker-rat> (also see Table 1).

Build instructions

RAT device fabrication, assembly, and programming are outlined at <https://hackaday.io/project/162481-rodent-arena-tracker-rat>, including a step-by-step assembly video. We estimate that assembling the RAT takes ~ 90 min. To assemble the hardware for the device, first populate the breakout PCB by soldering the tactile button, right-angle BNC connector, JST right-angle connector, and long male headers to the top of the board. Solder the included headers to the OpenMV Cam M7 with the female pins facing away from the side with the lens. The male pins of the headers should be trimmed using wire cutters so they do not exceed the height of the other components on the OpenMV Cam M7. Finally, solder the RTC module directly onto the PCB using including male headers, with the battery holder facing toward the LCD shield (it is positioned this way for easy removal of battery if necessary; Fig. 1A–C). Once the breakout PCB and OpenMV Cam M7 are assembled, mount the OpenMV Cam M7 in the bottom of the 3D-printed enclosure (Fig. 1D,E). The lens will fit through the square opening at the bottom of the enclosure, and the two mounting holes on either side of the OpenMV Cam M7 will align with their counterparts on the 3D-printed enclosure. Secure the OpenMV Cam M7 to the 3D-printed enclosure using a 4–40 screw in each of the two mounting holes. Connect the breakout PCB to the mounted OpenMV Cam M7 by aligning the mating faces of the connectors and pushing them together until they're fully engaged. After the headers are connected, secure the

Table 1: Bill of materials

Component	Number	Cost per unit	Total cost	Source of materials
OpenMV Cam M7	1	\$65.00	\$65.00	Openmv.io
LCD shield	1	\$20.00	\$20.00	Openmv.io
Adafruit DS3231 RTC breakout	1	\$13.95	\$13.95	Adafruit.com
3D-printed enclosure	1	~\$5	~\$5	Any printer will work
Breakout PCB	1	\$2.00	\$2.00	Seeed.io
JST right-angle connector	1	\$0.95	\$0.95	Karlsson Robotics P/N PRT-09749
Tactile button	1	\$0.49	\$0.49	Karlsson Robotics P/N COM-10302
Long break away male headers	2	\$0.75	\$0.75	Mouser P/N 474-PRT-12693
Right-angle BNC connector	1	\$2.43	\$2.43	Mouser P/N 523-31-5431
Undercut flat head screws 4–40 thread 5/8" length	7	\$0.06	\$0.42	McMaster-Carr P/N 91099A169
Li-Ion battery (optional)	1	\$9.95	\$9.95	Adafruit P/N 1781
MicroUSB cable (optional)	1	\$6.97	\$6.97	Cdwdg.com

breakout PCB to the enclosure using a 4–40 screw through each of the two mounting holes on the breakout PCB. Plug the LCD shield into the top of the breakout PCB by aligning the pins on the shield with the header rows on the breakout PCB. Next, align and mount the top cover of the 3D-printed enclosure with the base using 4–40 screws in each mounting hole. Finally, unscrew the supplied camera lens from the OpenMV camera, remove the small IR optical filter from the back of the lens with forceps, and replace the lens on the camera.

Programming the RAT device

To program and configure the RAT, first download and install the OpenMV IDE (<https://openmv.io/pages/download>) and download the two files, `RAT_v1.1_setTime.py` and `RAT_v1.1_auto_threshold_RTC.py` from the project's hackaday page (<https://hackaday.io/project/162481-rodent-arena-tracker-rat>). Format a microSD card as FAT32 and plug it into the RAT's microSD card slot on the side of the enclosure. Open the OpenMV IDE on a PC, connect the RAT to the PC using the micro USB port on the back of the unit, and pair it with the IDE by clicking the connect button at the bottom of the IDE interface. Load "`RAT_v1.1_setTime.py`" in the OpenMV IDE and edit it to include the current date and time. Click the green arrow and it will program the RTC with the correct time. Once this is set it will not need to be reset for approximately five years, or until the coin cell in the RTC module dies. Next load "`RAT_v1.1_auto_threshold_RTC.py`" and navigate to Tools>Save open script to OpenMV Cam to upload the code. Unpair the RAT from the IDE using the disconnect button at the bottom left of the IDE and disconnect it from the PC. When using the device for the first time, focus the RAT's lens using the live feed as a reference and lock it into place using the screw on the RAT's lens holder. Take care not to overtighten this lens screw as it can easily break. The OpenMV Python files for controlling the RAT are also provided as [Extended Data 1](#).

Operation instructions

Connect the RAT into a power source using either an external battery or micro USB cable. As soon as the device receives power it will create a new experiment data folder, begin tracking, and start recording data. The mouse centroid and speed will be overlaid on a feedback image on the LCD screen along with the current time and the experiment data file name. Press the button on the device to start a new data file. The new filename will appear on the screen and all rows in the data file will be time-stamped with the current date and time.

Subjects for validation experiments

A total of ten adult male mice (nine C57Bl/6J black mice, one BALB/cJ white mouse) were housed in murine vivarium caging in a 12/12 h light/dark circadian cycle at room temperature. Four additional mice expressing D1-cre were obtained from the GENSAT project (EY242; [Gong et al., 2007](#); [Gerfen et al., 2013](#)). Mice were given *ad libitum* access to rodent laboratory chow (5001 Rodents Diet; LabDiet) and water, and cages were changed every two weeks. Treatment and use of all animals conformed to the welfare protocols approved by the National Institute of Diabetes and Digestive and Kidney Diseases/National Institutes of Health Animal Care and Use Committee.

Viral infusions and optic fiber implantation

Viral infections of DMS were conducted on four adult male mice (8–12 weeks old). Anesthesia delivered via a mouse mask mounted on a stereotaxic apparatus (Stoelting) was administered with isoflurane at 2–3% and maintained during the entire surgery at 0.5–1.5%. Ear bars secured the mouse head in place while the skin was shaved and disinfected with a povidone/iodine solution. The skull was exposed and a hole ~0.5–1 mm in diameter was opened with a microdrill. A hydraulic injection system

(NanoJect III) was loaded with AAV virus for expressing channelrhodopsin-2 in a cre-dependent manner (UNC viral core), and lowered into the brain at the following coordinates: AP +0.5 mm, ML \pm 1.5 mm, DV -2.8 mm (from bregma). A total volume of 500 nl of viral solution was delivered to each side of the brain, and the injector was left in place for 5 min after the infusion. In the same surgery, the mouse received two fiber optic cannulae (200 μ m, 0.39 NA, 1.25 mm, ceramic ferrule) for optogenetic stimulation, secured to the skull with dental adhesive.

Use case validation experiments

In experiment 1, the circadian study, a single C57NL/6J mouse was placed in a 9 \times 12" Plexiglas box that was enclosed in a light-tight cabinet for 4 d, with *ad libitum* access to food and water. Lights were left off for the duration of the experiment. The RAT was positioned above the box for continuous tracking.

In experiment 2, four C57NL/6J mice were individually housed in 9 \times 12" Plexiglas boxes with a FED feeding

device (Nguyen et al., 2016) attached to the side and a RAT mounted above facing the arena floor. The output of the FED was connected to the input of the RAT, enabling the RAT to log the time and position of pellet retrieval events.

In experiment 3, four mice expressing channelrhodopsin-2 in direct pathway neurons and with unilateral optical fiber implants, were individually placed in a 9 \times 12" Plexiglas box. The RAT device was centered over the Plexiglas box, and a 15-Hz triggering pulse was generated when the mice were detected in one side of the box. A wireless head-mounted LED stimulator (Plexon Helios) was placed on the head of each mouse, controlled by the pulses from RAT. The mice received unilateral stimulation when they entered one side of the box. After 15 min, the stimulation side was reversed.

Software availability

All code and design files are freely available at <https://hackaday.io/project/162481-rodent-arena-tracker-rat>.

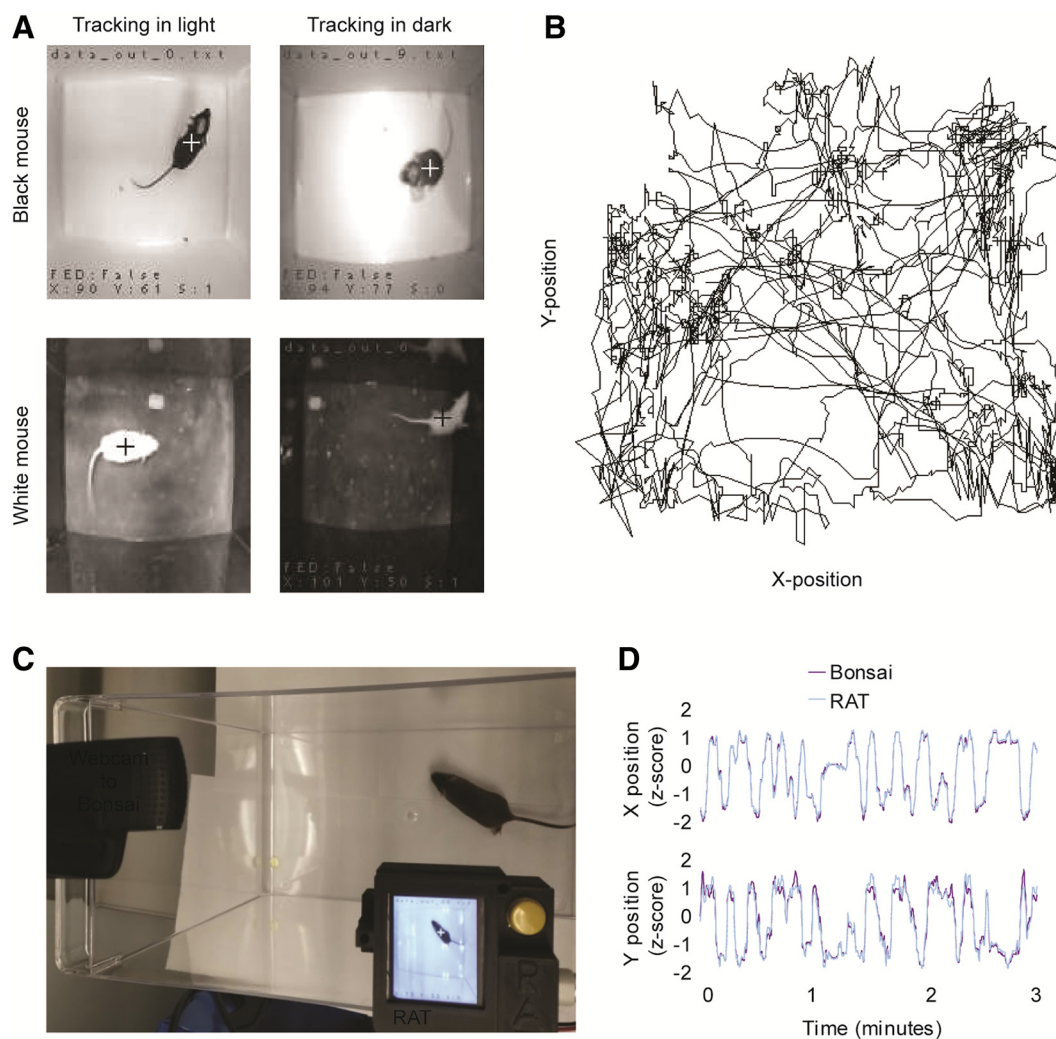


Figure 2. Validation of tracking performance. **A**, Example images of black and white mice tracked by RAT in light or dark conditions. **B**, Example xy scatter track plot of data exported from RAT. **C**, Photograph of experimental validation setup recording the same mouse with RAT and a webcam connected to Bonsai. **D**, x and y positions from both RAT and Bonsai, demonstrating strong correlation in mouse position data between the two systems.

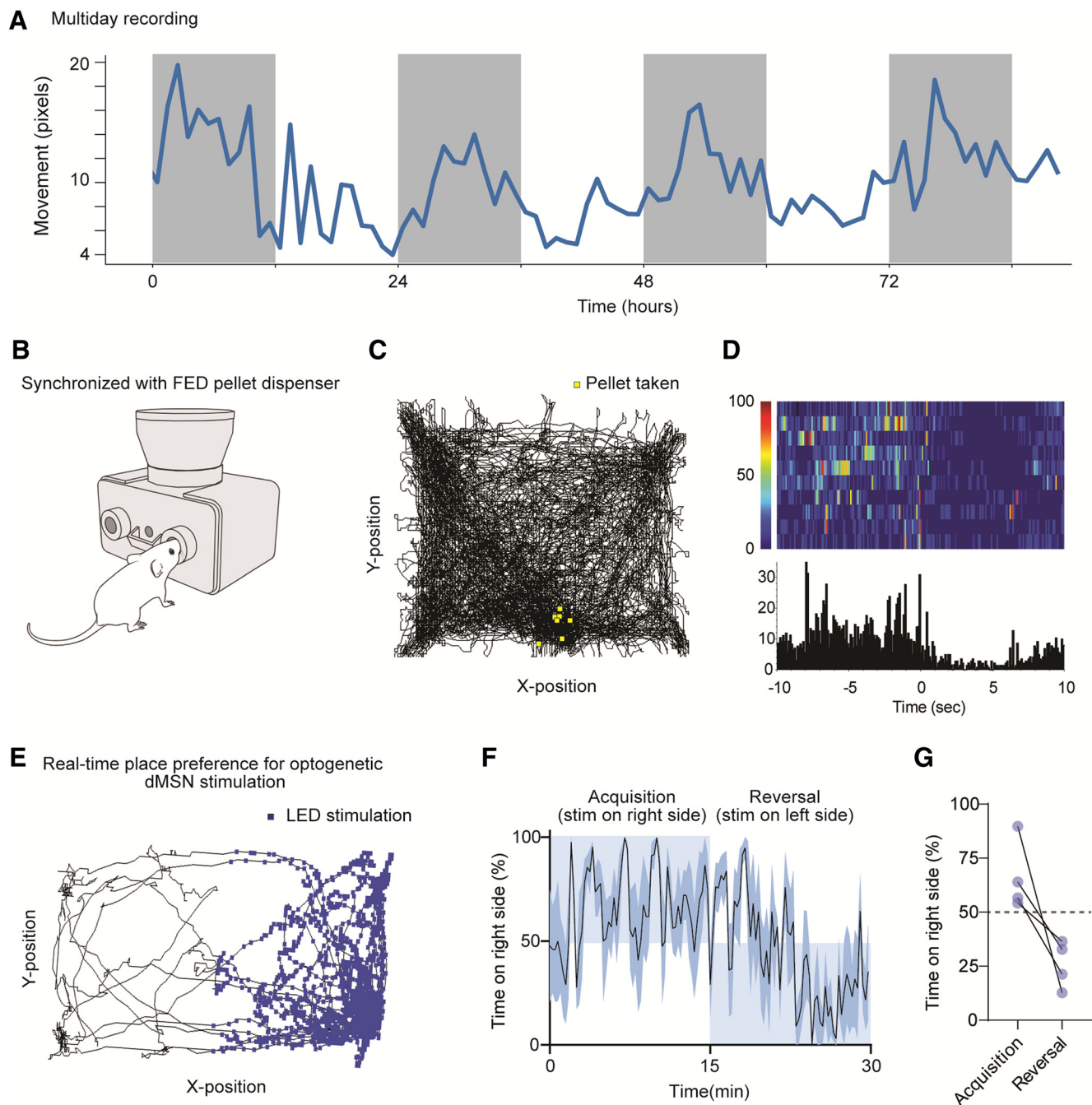


Figure 3. Experimental use cases for RAT. **A**, Demonstration of RAT tracking, showing a circadian rhythm in movement levels over 90 h. Lights were off for duration of experiments, gray bars represent the normal night cycle. **B**, Schematic of mouse nose-poking to obtain pellets from FED3 device. **C**, Example track plot for 30 min, showing locations of a mouse when he retrieved pellets from FED3. **D**, Perievent histogram and raster showing speed of mouse around pellet retrieval events. **E**, Example track plot for optogenetic real-time self-stimulation experiment. Blue squares show location when blue LED turned on to stimulate direct pathway medium spiny neurons in the striatum. **F**, **G**, Quantification of average time on each side of the chamber ($n = 4$ mice).

Results

We evaluated RAT performance under different lighting conditions using both black and white mice in a high contrast arena with the room lights on and off (Fig. 2*A,B*). The dynamic thresholding procedure was robust against changes in room lighting, automatically “re-thresholding” every ~ 4 s to continue to track the mice. The RAT tracked

black mice on a white background in both lighting conditions, although non-reflective flooring was necessary to limit the glare created from NIR LED reflections when tracking in the dark. We modified the segmentation code and threshold for tracking white mice on a black background and the device performance was comparable to the black mouse test (Fig. 2*A,B*). To validate the tracking



Movie 1. RTPP_example.mp4. Video demonstrating the real-time-place-preference assay. [View online]

performance, we compared the RAT data output head-to-head with video tracking in Bonsai, an open-source software language that is widely used for video tracking applications (Lopes et al., 2015). We positioned the RAT device and a USB camera connected to Bonsai above an arena containing a single black mouse (Fig. 2C). Both systems tracked mice successfully, with no instances of lost tracking. A quantitative analysis revealed 94.9% correlation between the x and y tracking positions of the RAT and Bonsai (Fig. 2D, $n=2$ mice). We concluded that the RAT device was robust against changes in lighting and is useful for tracking mouse centroid position.

In addition to validating RAT tracking with two mouse coat colors and two lighting conditions, we performed three experiments to demonstrate device utility and evaluate how the RAT performed in real-world “use-cases.” In experiment 1, we assessed how the RAT would perform in a multi-day circadian study. We positioned the RAT over a single mouse in a dark chamber for ~ 3.5 d (90 h). As the RAT does not save video, this experiment generated a single text file that was ~ 100 MB in size, which we estimated to be ~ 20 – 100 times smaller than a video stream of the same length. The circadian rhythm of mouse activity was apparent in the RAT data, even in total darkness, demonstrating the utility of RAT for measuring endogenous circadian activity rhythms (Fig. 3A).

In experiment 2, we synchronized the RAT input/output connection with an open-source pellet dispensing device, the feeding experimentation device (FED; Nguyen et al., 2016). We programmed the FED device to send a TTL pulse to the RAT each time a pellet was taken (Fig. 3B). We individually tested four mice in this setup, enabling us to synchronize mouse activity with pellet retrieval. We recorded both the position of the mouse at the time of pellet retrieval and the speed of the mouse around these events (Fig. 3C,D).

Finally, in experiment 3, we re-programmed the input on RAT to operate as an output for a real-time place preference (RTPP) brain stimulation study. We expressed an excitatory opsin, channelrhodopsin-2 in direct pathway neurons in the striatum, a population of neurons that is reinforcing when stimulated (Kravitz et al., 2012). When the mouse crossed onto one half of the box, the RAT sent 15-Hz TTL pulses to a wireless transmitter that delivered 4-mW pulses of blue light to the mouse. This stimulation was highly reinforcing, resulting in rapid

acquisition of preference behavior toward the LED-paired side of the cage within 5 min of the first session ($n=4$ mice; Movie 1; Fig. 3E,F). After 15 min, we reversed which side was stimulated by rotating the RAT camera 180 degrees. This reversal caused the mice to rapidly switch their preference to the opposite side (Fig. 3F,G). As both the RAT and the optogenetic stimulation device were wireless, this experiment highlighted the simple and flexible nature of embedded electronics for research applications.

Discussion

Review of the device

The RAT is a low cost, wireless position tracker, optimized for tracking mice in high contrast arenas. The RAT is based on the OpenMV Cam M7 (openmv.io), an open source machine vision camera. We optimized control code for tracking mice and created a hardware board for conveniently connecting a battery, RTC, BNC input/output, and push button for starting the recording. We present validation data demonstrating the effectiveness of the device for tracking mice, as well as connecting the RAT to other devices for flexible experimental arrangements.

Comparison with current technologies

Many commercial and open-source solutions exist for video tracking of rodents, and they all achieve high accuracy detection. Nearly all also have a richer feature set than the RAT and can accomplish more complex tracking and behavioral control tasks, including importing diverse data types and task control. As a pure tracking solution however, we see the value of RAT in its compact form factor, simplicity, and low cost.

Device limitations

There are several limitations to the RAT. The first is it does not save video. Because of the size of the OpenMV Cam M7 frame buffer and the real-time video processing, it was not possible for the hardware to also save video. This limitation means experimental videos cannot be “re-scored” at a later date. The consequence is that more up-front testing is required to ensure the tracking algorithm is working before use in experiments. In our hands, the RAT works consistently and accurately on rodents in high contrast environments, and we noted no dropped data points in validation testing. We recommend that new users test in their own environments as changes in camera position or lighting could require modification to the tracking settings. A second limitation is the RAT does not have any automated calibration procedure for measuring the size of an arena. Currently, tracking data must be calibrated off-line to get real-world position and speed values (i.e., in centimeters and centimeters per second). While this process could be implemented onboard on the RAT, it would likely be cumbersome on the small device. Finally, data are saved to an on-board microSD card which must be removed to retrieve the data. In future versions of the RAT, we hope to include wireless communication technology

that will stream tracking data in real time. Wireless data transfer will be especially important in large installations where removal of many SD cards would be cumbersome.

Potential future improvements

We envision several future improvements that can be made to both the hardware and the software of the RAT. The OpenMV project is actively developing new hardware to increase processing power and memory of the camera, allowing for more advanced algorithms to run in real time. For example, while this paper was in review the OpenMV project released the OpenMV H7 model, which is faster and more powerful than the M7 model used here. Our code and hardware are forward-compatible with the H7 camera, which should be able to achieve higher frame rates for tracking. In addition, the OpenMV project is actively supporting new camera sensors, including an infrared heat sensor for tracking heat signatures, which may be useful for improving tracking and identification of specific behaviors. Additionally, the OpenMV camera uses the common M12 lens mount, enabling use of many commercially available lenses and optical components. Tracking algorithms may have to take the specific lens being used into account, particularly if it distorts the image geometry, as with a fish-eye or super-wide-angle lens. As the OpenMV hardware improves, the camera board in the RAT can be upgraded to enable new functionality.

We prioritized low rates of data storage by tracking in real-time and storing only tracking positions and speed. This low data rate should also be compatible with wireless data transfer. The OpenMV project already sells a WIFI-enabled “shield” for OpenMV cameras, and there is discussion online that a Bluetooth shield is being developed. Because of the low data rate, tracking data from multiple RAT devices could be sent automatically to an Internet server for remote monitoring of tracking data. Additionally, the existing data storage method could be changed to a more compressed format such as a binary data file to further reduce bandwidth and storage requirements.

Finally, the hardware presented here is limited to a single input/output pin, which is tied to the single analog output pin of the OpenMV camera. This allows for a user to export a derived parameter such as speed in real time. In future versions of the RAT, we hope to include more digital inputs and outputs to create richer interactions between the user, the RAT, and additional external devices. These examples for improvement are not exhaustive, and we imagine that individual users will have diverse and specific modifications. The open-source nature of the RAT allows researchers to modify functionality to fit their specific needs. We put all the code and design files we produced online, where we will include further modifications as they are developed.

Conclusion

The RAT is a machine vision tracking device based on the OpenMV Cam M7. The RAT is wireless, inexpensive, and offers real-time processing and low storage requirements, all of which facilitate large-scale studies of animal

behavior. Open-source implementations like this enable experimental reproducibility across research centers and can lead to innovative new rodent-based experiment methodologies.

References

- Aguiar P, Mendonça L, Galhardo V (2007) OpenControl: a free open-source software for video tracking and automated control of behavioral mazes. *J Neurosci Methods* 166:66–72.
- Ben-Shaul Y (2017) OptiMouse: a comprehensive open source program for reliable detection and analysis of mouse body and nose positions. *BMC Biol* 15:41.
- Gerfen CR, Paletzki R, Heintz N (2013) GENSAT BAC cre-recombinase driver lines to study the functional organization of cerebral cortical and basal ganglia circuits. *Neuron* 80:1368–1383.
- Gong S, Doughty M, Harbaugh CR, Cummins A, Hatten ME, Heintz N, Gerfen CR (2007) Targeting Cre recombinase to specific neuron populations with bacterial artificial chromosome constructs. *J Neurosci* 27:9817–9823.
- Hong W, Kennedy A, Burgos-Artizzu XP, Zelikowsky M, Navonne SG, Perona P, Anderson DJ (2015) Automated measurement of mouse social behaviors using depth sensing, video tracking, and machine learning. *Proc Natl Acad Sci USA* 112:E5351–E5360.
- Huang JT, Wang GD, Wang DL, Liu Y, Zhang XY, Zhao YF (2015) A novel videographic method for quantitatively tracking vibrissal motor recovery following facial nerve injuries in rats. *J Neurosci Methods* 249:16–21.
- Kravitz AV, Tye LD, Kreitzer AC (2012) Distinct roles for direct and indirect pathway striatal neurons in reinforcement. *Nat Neurosci* 15:816–818.
- Lopes G, Bonacchi N, Frazão J, Neto JP, Atallah BV, Soares S, Moreira L, Matias S, Itskov PM, Correia PA, Medina RE, Calcaterra L, Dreosti E, Paton JJ, Kampff AR (2015) Bonsai: an event-based framework for processing and controlling data streams. *Front Neuroinform* 9:7.
- Mathis A, Mamidanna P, Cury KM, Abe T, Murthy VN, Mathis MW, Bethge M (2018) DeepLabCut: markerless pose estimation of user-defined body parts with deep learning. *Nat Neurosci* 21:1281–1289.
- Nashaat MA, Oraby H, Peña LB, Dominiak S, Larkum ME, Sachdev RNS (2017) Pixying behavior: a versatile real-time and post hoc automated optical tracking method for freely moving and head fixed animals. *eNeuro* 4.
- Nguyen KP, O’Neal TJ, Bolonduro OA, White E, Kravitz AV (2016) Feeding experimentation device (FED): a flexible open-source device for measuring feeding behavior. *J Neurosci Methods* 267:108–114.
- Noldus LP, Spink AJ, Tegelenbosch RA (2001) EthoVision: a versatile video tracking system for automation of behavioral experiments. *Behav Res Methods Instrum Comput J* 33:398–414.
- Patel TP, Gullotti DM, Hernandez P, O’Brien WT, Capehart BP, Morrison BI, Bass C, Eberwine JE, Abel T, Meaney DF (2014) An open-source toolbox for automated phenotyping of mice in behavioral tasks. *Front Behav Neurosci* 8:349.
- Pennington ZT, Dong Z, Bowler R, Feng Y, Vetere LM, Shuman T, Cai DJ (2019) ezTrack: an open-source video analysis pipeline for the investigation of animal behavior. *bioRxiv* 592592.
- Poffé C, Dalle S, Kainz H, Berardi E, Hespel P (2018) A noninterfering system to measure in-cage spontaneous physical activity in mice. *J Appl Physiol* 125:263–270.
- Reeves SL, Fleming KE, Zhang L, Scimemi A (2016) M-Track: a new software for automated detection of grooming trajectories in mice. *PLoS Comput Biol* 12:e1005115.
- Rodriguez A, Zhang H, Klaminder J, Brodin T, Andersson PL, Andersson M (2018) ToxTrac: a fast and robust software for tracking organisms. *Methods Ecol Evol* 9:460–464.

- Salem G, Krynitsky J, Hayes M, Pohida T, Burgos-Artizzu X (2019) Three-dimensional pose estimation for laboratory mouse from monocular images. *IEEE Trans Image Process Publ IEEE* 28:4273–4287.
- Salem GH, Dennis JU, Krynitsky J, Garmendia-Cedillos M, Swaroop K, Malley JD, Pajevic S, Abuhatzira L, Bustin M, Gillet J-P, Gottesman MM, Mitchell JB, Pohida TJ (2015) SCORHE: a novel and practical approach to video monitoring of laboratory mice housed in vivarium cage racks. *Behav Res Methods* 47:235–250.
- Samson AL, Ju L, Ah Kim H, Zhang SR, Lee JAA, Sturgeon SA, Sobey CG, Jackson SP, Schoenwaelder SM (2015) Mouse Move: an open source program for semi-automated analysis of movement and cognitive testing in rodents. *Sci Rep* 5:16171.
- Shenk JT (2019) A Python Trajectory Analysis Library. Available at <https://github.com/justinshenk/traja>
- Tort ABL, Neto WP, Amaral OB, Kazlauskas V, Souza DO, Lara DR (2006) A simple webcam-based approach for the measurement of rodent locomotion and other behavioural parameters. *J Neurosci Methods* 157:91–97.
- Wiltschko AB, Johnson MJ, Iurilli G, Peterson RE, Katon JM, Pashkovski SL, Abreira VE, Adams RP, Datta SR (2015) Mapping sub-second structure in mouse behavior. *Neuron* 88:1121–1135.