

RESEARCH ARTICLE

Aggregated LDL turn human macrophages into foam cells and induce mitochondrial dysfunction without triggering oxidative or endoplasmic reticulum stress

Gabriela M. Sanda¹, Camelia S. Stancu¹, Mariana Deleanu^{1,2}, Laura Toma¹, Loredan S. Niculescu¹, Anca V. Sima^{1*}

1 Lipidomics Department, Institute of Cellular Biology and Pathology "Nicolae Simionescu" of the Romanian Academy, Bucharest, Romania, **2** Faculty of Biotechnology, University of Agronomical Sciences and Veterinary Medicine, Bucharest, Romania

* anca.sima@icbp.ro



OPEN ACCESS

Citation: Sanda GM, Stancu CS, Deleanu M, Toma L, Niculescu LS, Sima AV (2021) Aggregated LDL turn human macrophages into foam cells and induce mitochondrial dysfunction without triggering oxidative or endoplasmic reticulum stress. *PLoS ONE* 16(1): e0245797. <https://doi.org/10.1371/journal.pone.0245797>

Editor: Yi Cao, Xiangtan University, CHINA

Received: October 6, 2020

Accepted: January 7, 2021

Published: January 25, 2021

Copyright: © 2021 Sanda et al. This is an open access article distributed under the terms of the [Creative Commons Attribution License](https://creativecommons.org/licenses/by/4.0/), which permits unrestricted use, distribution, and reproduction in any medium, provided the original author and source are credited.

Data Availability Statement: All relevant data are within the manuscript and its [Supporting Information](#) files.

Funding: This work was supported by the Romanian Academy. The funder had no role in study design, data collection and analysis, decision to publish, or preparation of the manuscript.

Competing interests: The authors have declared that no competing interests exist.

Abstract

Uptake of modified lipoproteins by macrophages turns them into foam cells, the hallmark of the atherosclerotic plaque. The initiation and progression of atherosclerosis have been associated with mitochondrial dysfunction. It is known that aggregated low-density lipoproteins (agLDL) induce massive cholesterol accumulation in macrophages in contrast with native LDL (nLDL) and oxidized LDL (oxLDL). In the present study we aimed to assess the effect of agLDL on the mitochondria and ER function in macrophage-derived foam cells, in an attempt to estimate the potential of these cells, known constituents of early fatty streaks, to generate atheroma in the absence of oxidative stress. Results show that agLDL induce excessive accumulation of free (FC) and esterified cholesterol in THP-1 macrophages and determine mitochondrial dysfunction expressed as decreased mitochondrial membrane potential and diminished intracellular ATP levels, without generating mitochondrial reactive oxygen species (ROS) production. AgLDL did not stimulate intracellular ROS (superoxide anion or hydrogen peroxide) production, and did not trigger endoplasmic reticulum stress (ERS) or apoptosis. In contrast to agLDL, oxLDL did not modify FC levels, but stimulated the accumulation of 7-ketocholesterol in the cells, generating oxidative stress which is associated with an increased mitochondrial dysfunction, ERS and apoptosis. Taken together, our results reveal that agLDL induce foam cells formation and mild mitochondrial dysfunction in human macrophages without triggering oxidative or ERS. These data could partially explain the early formation of fatty streaks in the intima of human arteries by interaction of monocyte-derived macrophages with non-oxidatively aggregated LDL generating foam cells, which cannot evolve into atherosclerotic plaques in the absence of the oxidative stress.

Introduction

The accumulation of macrophage-derived foam cells in the arterial intima is the hallmark of the early-stage atherosclerosis [1–3]. Intimal foam cells develop mainly from monocyte-derived macrophages, due to the continuous uptake of modified low-density lipoproteins (LDL) trapped in the sub-endothelium [4,5]. Aggregation of LDL is a structural, non-oxidative alteration happening in the intima of the arterial wall, many LDL particles being associated with the extracellular matrix proteoglycans in the arterial intima [6,7]. Aggregated LDL (agLDL) determine massive free (FC) and esterified (EC) cholesterol accumulation in macrophages [8–10]. AgLDL can be internalized by LDL receptor-related protein (LRP1) [11], by a phagocytic process [8], or by sequestration in the macrophages surface-connected compartments and plasma membrane invaginations by a process named pinocytosis [9,10].

In contrast with native LDL (nLDL) or agLDL, oxidized LDL contain 7-ketocholesterol (7-KC), the most prominent oxysterol formed during the oxidative modification of LDL [12]. Previous data, as well our own, show that oxLDL induce the intracellular accumulation of 7-KC in macrophages, triggering oxidative and endoplasmic reticulum stress (ERS), mitochondrial dysfunction and apoptosis [12–15].

It is known that exposure of macrophages to agLDL determines the accumulation of FC in the late endosome/lysosomes [16,17]. FC can be transported from the late endosomes to other cellular organelles such as mitochondria and endoplasmic reticulum (ER), where the excessive concentrations of FC can affect the function of these cellular compartments. If such dysregulation of the lipid metabolism persists and combines with other pro-oxidant insults, it may lead to ER stress (ERS). Ultimately, this can result in apoptotic cell death [18,19]. The main sources of intracellular oxidative stress in macrophages are mitochondria and NADPH oxidase family [20].

In mitochondria, reactive oxygen species (ROS) are formed as by-products of the oxidative phosphorylation that leads to ATP production. Mitochondrial functions are altered by severe and/or prolonged oxidative stress [21]. The depolarization of mitochondrial membrane potential ($\Delta\Psi_m$), the driving force for mitochondrial ATP synthesis, causes mitochondrial dysfunction known to be associated with the initiation and progression of atherosclerosis [22,23].

ER is the organelle involved in the folding and trafficking of proteins, having an important role in maintaining the cellular homeostasis. Different studies show an interdependence between ROS and ERS [24].

Data regarding the agLDL specific effects on mitochondria and ER from macrophages are lacking, the existing studies being focused mainly on the mechanisms of internalization, catabolism and lipid loading. Thus, the present paper aims to evaluate the effects of agLDL on the function of mitochondria and ER in macrophage-derived foam cells, questioning if non-oxidatively modified LDL could play a role in atherosclerosis inception. The results were compared to those obtained for nLDL and oxLDL effects in macrophages in an attempt to estimate the potential of macrophage-derived foam cells, known constituents of early fatty streaks, to generate atheroma in the absence of oxidative stress.

Materials and methods

Reagents

RPMI-1640 medium, penicillin, streptomycin, phorbol-12-myristate-13-acetate (PMA), Oil Red O, protease inhibitor cocktail, sodium orthovanadate, sodium fluoride, dihydroethidium (DHE), 2',7'-dichlorofluorescein diacetate (DCFH-DA) and thiazolyl blue tetrazolium bromide (MTT) were purchased from Sigma-Aldrich, St. Louis, MO, USA. Fetal calf serum was

from EuroClone, Sizzano, Italy. TRIzol reagent and SYBR Select master mix were from Applied Biosystems, CA, USA. High Capacity cDNA Reverse Transcription kit, MitoSOXTM Red mitochondrial superoxide indicator (Invitrogen) and JC-1 (5,5',6,6'-tetrachloro-1,1',3,3'-tetraethylbenzimidazolylcarbocyanine iodide) dye (Molecular Probes) were from Thermo Fisher Scientific, Waltham, MA, USA.

Primary antibodies against human LRP1 (ab20753, mouse monoclonal, 1:1000), CD36 (ab36977, rabbit polyclonal, 1:1000), phospho- inositol-requiring transmembrane kinase/ endoribonuclease 1 α (p-IRE1; Ser724, ab124945, rabbit monoclonal, 1:1000), CCAAT/- enhancer-binding protein homologous protein (CHOP/DDIT3; ab11419, mouse monoclonal, 1:1000) and horseradish peroxidase-conjugated goat secondary antibodies against mouse or rabbit IgG (1:10000) were obtained from Abcam, Cambridge, UK. The antibodies to human phospho-eukaryotic Initiation Factor 2 α (p-eIF2 α ; Ser52, sc-101670, rabbit polyclonal, 1:500), eIF2 α (sc-11386, rabbit polyclonal, 1:500), IRE1 α (sc-20790, rabbit polyclonal, 1:800), activating transcription factor 6 α (ATF-6 α ; sc-166659, mouse monoclonal, 1:400), glucose-regulated protein 78 (Grp78; KDEL ER Marker, sc-58774, mouse monoclonal, 1:800) and β -actin (sc-47778, mouse monoclonal, 1:4000) were purchased from Santa Cruz Biotechnology, Santa Cruz, CA, USA.

LDL isolation and modification

Native LDL (nLDL) were isolated by density gradient ultracentrifugation from human plasma of healthy donors, as previously described [25]. AgLDL were obtained according to previous published data [26,27]. In brief, nLDL (1 mg/mL) were vortexed for 4 min at room temperature at maximal speed. Modified LDL were then centrifuged at 10,000xg for 10 min and the precipitated fraction composed of 100% agLDL was added to cell cultures [26,27]. *In vitro* oxLDL was prepared by incubating nLDL with 10 μ M CuSO₄ for 24 h at 37°C in the absence of antioxidant protection, and characterized as described [25,28]. The lipid peroxides levels in LDL were measured as thiobarbituric acid reactive substances (TBARS) by Ultra High Pressure Liquid Chromatography (UHPLC) method [29] and expressed as malondialdehyde (MDA) pmoles/mg LDL protein.

Cell culture and experimental procedure

Human leukemic monocytic THP-1 cells (ATCC, Manassas, VA, USA) were differentiated into macrophages as previously described [12]. Macrophages were incubated in serum free-medium for 24 h with nLDL, agLDL or oxLDL (100 μ g protein/ml). Macrophages incubated in similar conditions, but not exposed to LDL were considered control cells. After LDL incubation, cells were exhaustively washed as in [30] and collected for either mRNA/protein or lipid extraction.

Lipid staining with Oil Red O

To evidence the lipid droplets accumulated in agLDL-exposed macrophages, Oil Red O staining was performed. The cells plated on coverslips placed in 24 well plates (5x10⁵ cells/well) were incubated for 24 h with agLDL, oxLDL or nLDL (100 μ g protein/ml). After washing with phosphate buffer saline (PBS), the cells were fixed in 4% paraformaldehyde (10 min), washed twice with PBS, stained with Oil Red O (0.3% in 60% isopropanol, 15 min) to evidence the neutral lipids and examined by light microscopy with a Microphot FXA Nikon microscope using filter block B-2A.

Analysis of intracellular cholesterol accumulation

Free cholesterol (FC) and total cholesterol (TC) content of nLDL, agLDL and oxLDL, and of the macrophages exposed to nLDL, agLDL or oxLDL were analyzed by gas chromatography-mass spectrometry (GC-MS), as previously reported [28].

RNA extraction and real-time PCR analysis

Total RNA was isolated from cultured macrophages using TRIzol reagent following the manufacturer's protocol. One μg of total RNA was reverse transcribed into cDNA using the High Capacity cDNA Reverse Transcription kit. cDNA was analyzed by real-time PCR using the ViiA7 real-time PCR system (Applied Biosystems, Life Technologies, Carlsbad, USA) and SYBR Select master mix. The human specific primers for studied genes are listed in Table 1. The relative quantification was performed using the Fit-Point method [31].

Immunoblot assay

Western Blot analysis was performed as previously described [12].

The quantification of ROS production

Mitochondrial reactive oxygen species ROS (mtROS) generation was measured using MitoSOXTM Red mitochondrial superoxide indicator according to the manufacturer instructions and expressed as relative arbitrary units per total cell protein. Intracellular ROS levels in cultured macrophages were measured using DHE fluorescent marker, which especially detects the superoxide anion (O_2^-) [12] or DCFH-DA, probably the most commonly used probe for measuring cellular hydrogen peroxide (H_2O_2) [32]. The results were expressed as relative fluorescence units per total cell protein.

The NADPH oxidase (NADPHox) activity in whole cells was estimated by using a lucigenin-enhanced chemiluminescence assay as previously described [25] and expressed as relative light units per total cell protein.

The lipid peroxides levels in the culture media were measured as TBARS by UHPLC method described in [33] and expressed as MDA pmoles/ml.

Table 1. Primers used for real-time PCR analysis.

Gene	GeneBank accession number	Sequences of oligonucleotide primers	Amplicon size (bp)
LRP1	NM_002332.3	FW: 5'-GAGCTGAACCAGCCTTTG-3' RW: 5'-GGTAGACACTGCCACTCCGATAC-3'	79
CD36	NM_001001548.2	FW: 5'-TCTTTCTGTCAGCCCAATG-3' RW: 5'-AGCCTCTGTTCCTCACTGATAGTGA-3'	60
Bax	NM_001291428.1	FW: 5'-CCTGGACCCGGTGCCTCAGG-3' RW: 5'-TGGTGACAGGGCCTTGAGC-3'	245
Bcl-2	NM_000633.2	FW: 5'-AGGGCAGTGTGGTCTCCGAATG-3' RW: 5'-CCATTGCCTCTCCTCACGTTCC-3'	249
β -actin	NM_001101.3	FW: 5'-GTCTTCCCCTCCATCGT-3' RW: 5'-CGTCGCCACATAGGAAT-3'	82

LRP1, LDL receptor-related protein; CD36, scavenger receptor CD36; Bax, Bcl-2 associated X; Bcl-2, B-cell lymphoma 2.

<https://doi.org/10.1371/journal.pone.0245797.t001>

Evaluation of the mitochondrial membrane potential

JC-1 dye was used to assess the mitochondrial membrane potential ($\Delta\Psi_m$) as described in [34]. In brief, after LDL exposure, macrophages seeded on 12-well plates were loaded with JC-1 dye (5 $\mu\text{g}/\text{ml}$, 10 min, 37°C). The JC-1 in excess was removed by extensive washing, then the cells were scraped and the fluorescence intensity was measured using a spectrofluorometer Tecan Infinite M200 (Tecan Austria, Austria) (excitation 485 nm and 500 nm; emission 535 nm and 600 nm).

Measurement of ATP content

The detection of the cellular ATP was done with ViaLight™ plus kit (Lonza, Walkersville, MD, USA), according to manufacturer's instructions.

Evaluation of cell viability

The cell viability was measured using the tetrazolium salt (MTT) and CytoTox-ONE™ Homogeneous Membrane Integrity Assay (Promega, Madison, USA), according to manufacturer instructions. In addition, Hoechst 33258 was used to estimate the proliferation rate by measuring the cellular DNA content [25].

Statistical analysis

The statistical analysis of the experimental data was done using the dedicated SPSS software (IBM SPSS v21, IBM Ireland, Dublin, Ireland). The Mann-Whitney (U-test) and T-test were used for the inter-group validation of the obtained results. One-way ANOVA test was used to compare differences between the experimental groups (the control cells, nLDL, agLDL and oxLDL-exposed macrophages). $P < 0.05$ values were considered statistically significant. Data were expressed as mean \pm standard deviation (SD) and are representative for at least three independent experiments.

Results

AgLDL induce excessive intracellular cholesterol accumulation in THP-1 macrophages

AgLDL prepared *in vitro* have similar lipid peroxides levels as nLDL (0.049 ± 0.017 nmoles MDA/mg protein) and the same FC/protein and EC/protein ratios as nLDL ($\mu\text{g sterol}/\text{mg protein}$) (Fig 1A). OxLDL have significantly increased lipid peroxides levels (1.05 ± 0.44 nmoles MDA/mg protein, $p < 0.001$ vs. nLDL), are characterized by the presence of 7-ketocholesterol (7-KC) ($121.90 \pm 40.17 \mu\text{g sterol}/\text{mg protein}$, $p < 0.001$ vs. nLDL) and a significantly reduced EC content (41%, $p < 0.05$ vs. nLDL) (Fig 1A).

The incubation of macrophages with agLDL, induced a significant increase of the cellular levels of TC, FC and EC as compared to C, nLDL or oxLDL ($p < 10.001$ for all studied groups by ANOVA). AgLDL significantly increased the cellular levels of TC (9.3-fold, $p = 0.021$ vs. C and 6.8-fold, $p = 0.021$ vs. nLDL), FC (5.4-fold, $p = 0.021$ vs. C and 3.2-fold, $p = 0.021$ vs. nLDL) and EC (12.5-fold, $p = 0.021$ vs. C and 9.7-fold, $p = 0.021$ vs. nLDL) (Fig 1B). The incubation of macrophages with nLDL, as compared to C, significantly increased the cellular levels of FC (70%, $p = 0.021$). Moreover, oxLDL did not change FC and EC levels, but induced 7-KC accumulation in macrophages (Fig 1B).

To visualize the lipids accumulated in THP-1 macrophages following the exposure to modified LDL or nLDL, the cells were stained with Oil Red O. Light microscopy images revealed a

considerably increased number of lipid droplets in cells incubated with agLDL compared with cells incubated with oxLDL or nLDL (Fig 1C).

The incubation of macrophages with agLDL, compared to C or nLDL, did not change LRP1 and CD36 gene and protein expression. OxLDL did not alter LRP1 expression, but significantly increased CD36 gene and protein expression compared to nLDL (2.6-fold, $p < 0.001$ and 74%, $p < 0.01$; $p < 0.001$ for all studied groups by ANOVA) (Fig 2).

AgLDL induce mitochondrial dysfunction

The effect of lipid loading on mitochondrial function in macrophages was assessed. The experiments showed that, compared to C or nLDL, agLDL significantly decreased $\Delta\Psi_m$ (59%, $p < 0.001$ vs. C and 61%, $p < 0.001$ vs. nLDL; $p < 0.001$ for all studied groups by ANOVA) and intracellular ATP levels (21%, $p < 0.001$ vs. C and 16%, $p = 0.003$ vs. nLDL; $p < 0.001$ for all studied groups by ANOVA) (Fig 3A and 3B), which indicates an impaired mitochondrial function. Interestingly, agLDL did not stimulate mtROS production (Fig 3C). Moreover, agLDL did not induce apoptosis, Bax/Bcl-2 ratio remaining unaltered (Fig 3D).

The exposure of macrophages to oxLDL did not affect $\Delta\Psi_m$, but significantly decreased intracellular ATP levels (19%, $p < 0.001$ vs. C and 13%, $p < 0.01$ vs. nLDL; $p < 0.001$ for all studied groups by ANOVA). Furthermore, oxLDL stimulated mtROS production (33%, $p < 0.01$ vs. C and 33%, $p < 0.05$ vs. nLDL; $p = 0.056$ for all studied groups by ANOVA) and increased Bax/Bcl-2 ratio (94%, $p < 0.001$ vs. C and 80%, $p < 0.001$ vs. nLDL; $p < 0.001$ for all studied groups by ANOVA) (Fig 3).

AgLDL do not stimulate intracellular ROS production

We questioned if, in our experimental conditions, agLDL may induce ROS production in macrophages. Results showed that agLDL- exposure of macrophages did not stimulate the

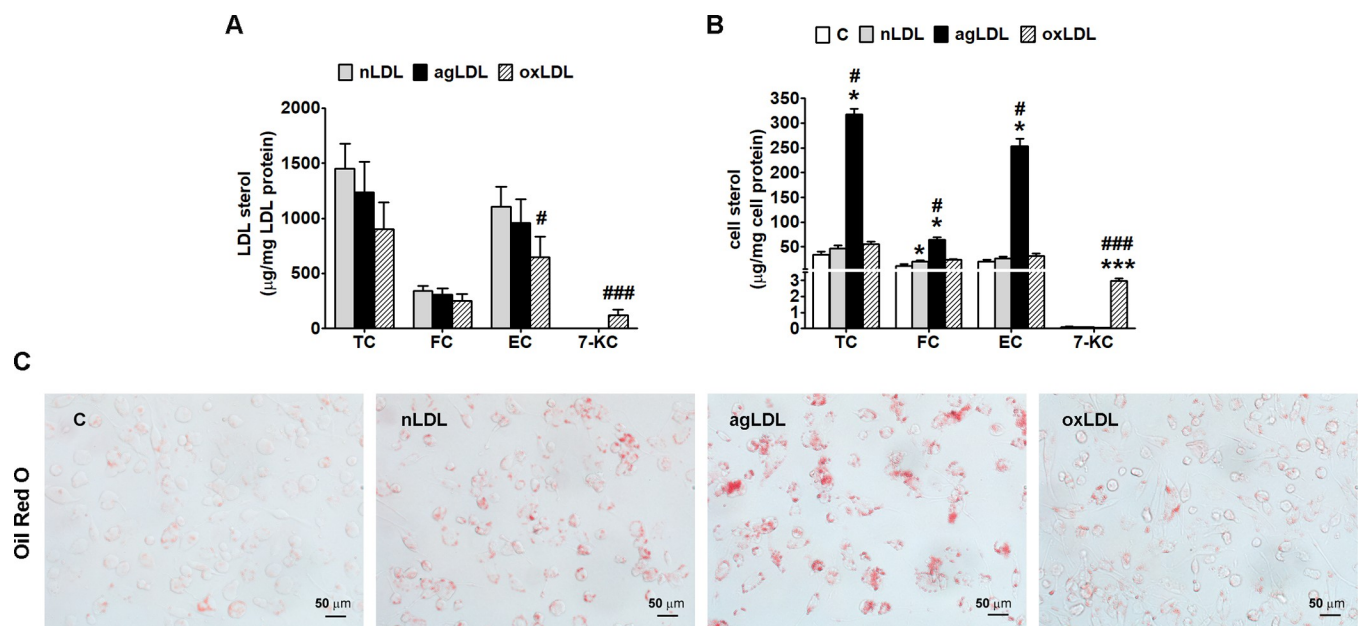


Fig 1. AgLDL induce intracellular cholesterol accumulation in THP-1 macrophages. Cells were exposed for 24 h to 100 µg/ml aggregated LDL (agLDL), oxidized (oxLDL) or native LDL (nLDL). Cells incubated in the same conditions without LDL were considered control cells (C). (A) Total (TC), free (FC) and esterified cholesterol (EC) and 7-ketocholesterol (7-KC) levels in agLDL, oxLDL and nLDL analyzed by GC-MS and expressed as LDL sterol relative to LDL protein. (B) Intracellular TC, FC, EC and 7-KC levels analyzed by GC-MS and expressed as cell sterol relative to total cell protein. (C) Oil Red O staining showing neutral lipid accumulation, bar = 50 µm. All data are expressed as fold change versus C and presented as mean ± SD (n = 4). * $p < 0.05$, *** $p < 0.001$ vs. C; # $p < 0.05$, ### $p < 0.001$ vs. nLDL.

<https://doi.org/10.1371/journal.pone.0245797.g001>

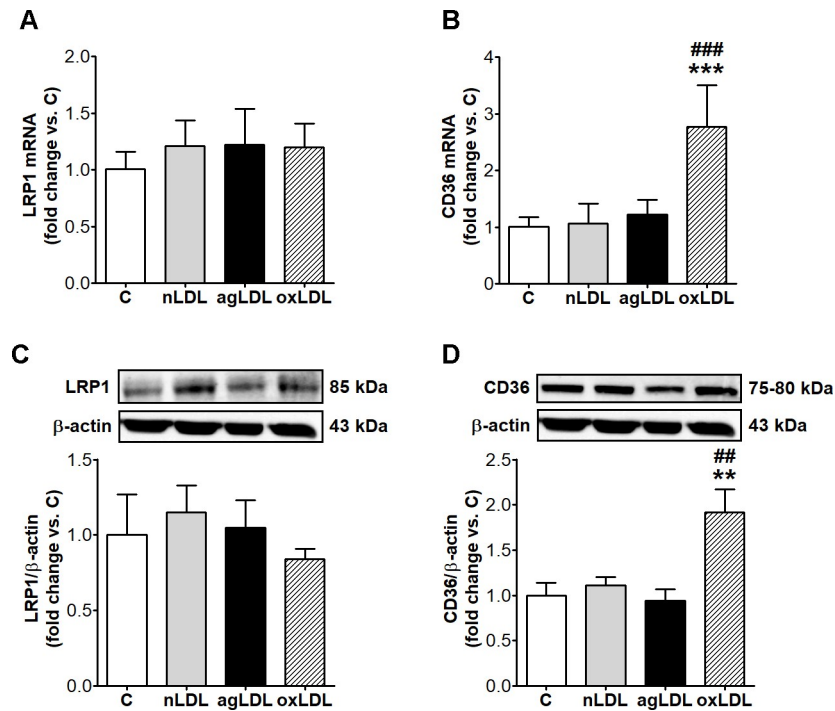


Fig 2. AgLDL do not modify LRP1 and CD36 expression in THP-1 macrophages. Cells were exposed for 24 h to 100 μ g/ml aggregated LDL (agLDL), oxidized LDL (oxLDL) or native LDL (nLDL). Cells incubated in the same conditions without LDL were considered control cells (C). mRNA levels of LRP1 (A) and CD36 (B) relative to β -actin ($n = 6$). Representative blot and densitometric analysis of LRP1 (C) and CD36 (D) protein normalized to β -actin ($n = 4$). All data are represented as fold change versus C and presented as mean \pm SD. ** $p < 0.01$, *** $p < 0.001$ vs. C; ## $p < 0.01$, ### $p < 0.001$ vs. nLDL.

<https://doi.org/10.1371/journal.pone.0245797.g002>

intracellular ROS (O_2^- or H_2O_2) production, and did not induce the presence of lipid peroxides in the culture medium (Fig 4A–4C). NADPHox activity was not increased by agLDL compared to nLDL (Fig 4D).

The incubation of macrophages with oxLDL, as compared with nLDL, stimulated intracellular ROS production (O_2^- , 26%, $p < 0.001$ and H_2O_2 , 53%, $p < 0.001$; $p < 0.001$ for all studied groups by ANOVA), increased NADPHox activity (40%, $p < 0.01$; $p < 0.001$ for all studied groups by ANOVA) and the release of lipids peroxides in the culture medium (6.8-fold, $p < 0.01$; $p < 0.001$ for all studied groups by ANOVA) (Fig 4).

AgLDL do not induce ER stress in macrophages

Since our data showed that agLDL have induced excessive intracellular accumulation of FC, we questioned if agLDL could induce ERS in our experimental conditions. Exposure of macrophages to agLDL, compared to C or nLDL, did not stimulate the expression of any of the analyzed ER stress markers: the phosphorylation levels of eIF2 α (phospho-eIF2 α /total-eIF2 α) and IRE1 α (phospho-IRE1/total-IRE1 α), and the protein expressions of ATF6 α , Grp78 and CHOP (Fig 5).

The exposure of macrophages to oxLDL significantly increased the phosphorylation level of eIF2 α (56%, $p < 0.01$ vs. nLDL; $p = 0.001$ for all studied groups by ANOVA), ATF6 α (35%, $p < 0.05$ vs. nLDL; $p = 0.015$ for all studied groups by ANOVA) and CHOP (38%, $p < 0.05$ vs. nLDL; $p < 0.001$ for all studied groups by ANOVA) protein expression (Fig 5).

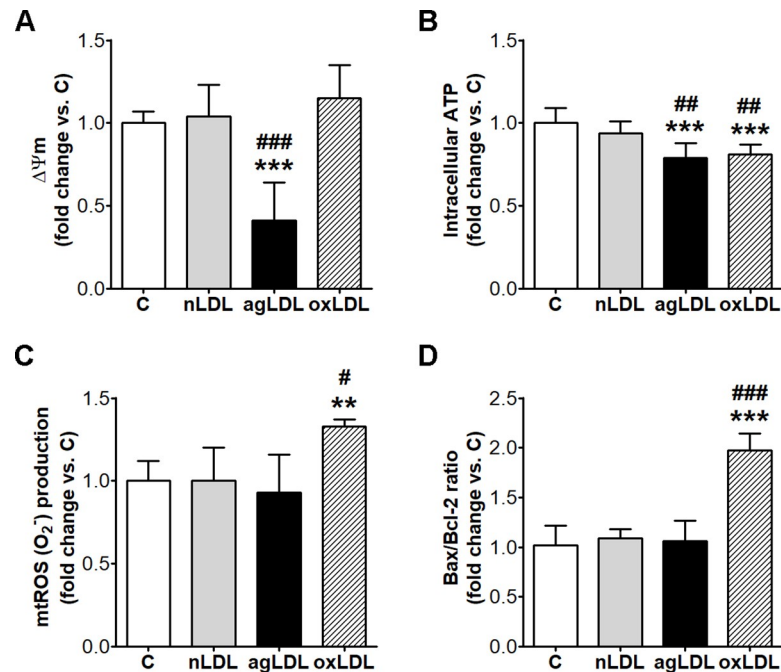


Fig 3. AgLDL induce the decrease of $\Delta\Psi_m$ and ATP in THP-1 macrophages, without mtROS or apoptosis. Cells were exposed for 24 h to 100 $\mu\text{g/ml}$ aggregated LDL (agLDL), oxidized (oxLDL) or native LDL (nLDL). Cells incubated in the same conditions without LDL were considered control cells (C). (A) Mitochondrial membrane potential ($\Delta\Psi_m$) expressed as JC-1 red/green fluorescence intensity ratio ($n = 6$). (B) Intracellular ATP levels assessed using ViaLight™ plus kit and expressed as relative luminescence units per total cell protein ($n = 5$). (C) Mitochondrial ROS (mtROS) assessed using MitoSOX™ Red mitochondrial superoxide indicator and expressed as relative arbitrary units per total cell protein ($n = 4$). (D) Bax and Bcl-2 mRNA levels relative to β -actin assessed by real-time PCR and expressed as Bax/Bcl-2 ratio ($n = 4$). All data are expressed as fold change versus C and presented as mean \pm SD. ** $p < 0.01$, *** $p < 0.001$ vs. C; # $p < 0.05$, ## $p < 0.01$, ### $p < 0.001$ vs. nLDL.

<https://doi.org/10.1371/journal.pone.0245797.g003>

AgLDL do not affect cell viability

AgLDL did not alter cell viability, did not induce LDH release in the culture medium and did not affect cell proliferation (Fig 6). The incubation of macrophages with oxLDL significantly decreased cell viability (14%, $p < 0.01$ vs. nLDL; $p = 0.001$ for all studied groups by ANOVA), increased LDH release in the culture medium (2-fold, $p < 0.001$ vs. nLDL; $p < 0.001$ for all studied groups by ANOVA) and decreased cell proliferation (11%, $p < 0.05$ vs. nLDL; $p = 0.011$ for all studied groups by ANOVA) (Fig 6).

Discussion

Macrophage-derived foam cells are constituents of the fatty streaks, the earliest and reversible atherogenic modification of the arterial wall [3]. Mitochondrial dysfunction is a key step that can lead the macrophages toward a pro-atherogenic state [21,23]. It is known that the exposure of macrophages to agLDL, which are non-oxidatively modified LDL, generates their transformation into foam cells. The novel finding of the present study is that these foam cells develop mitochondrial dysfunction, expressed by the reduced $\Delta\Psi_m$ and intracellular ATP levels, without triggering ROS production (either in mitochondria, or in the cytoplasm) or ERS. Our results emphasize that in the absence of oxidative stressors, a structural, non-oxidative modification of LDL such as aggregation induces only a dysfunction in the energy metabolism of the cell, without stimulation of the oxidative stress.

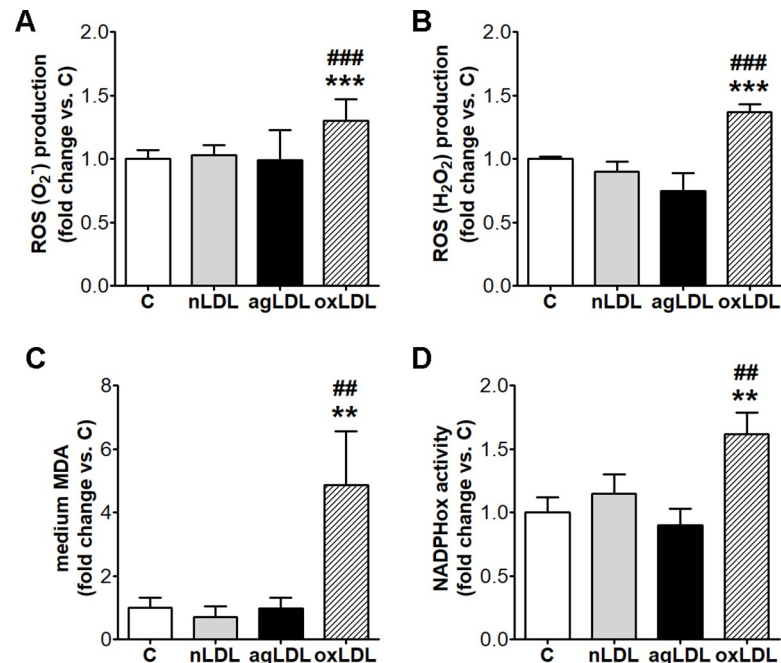


Fig 4. AgLDL do not induce oxidative stress in THP-1 macrophages. Cells were exposed for 24 h to 100 μ g/ml aggregated (agLDL), oxidized LDL (oxLDL) or native LDL (nLDL). Cells incubated in the same conditions without LDL were considered control cells (C). Intracellular levels of superoxide (O_2^-) (n = 6) (A) and of hydrogen peroxide (H_2O_2) (n = 4) (B) assessed using dihydroethidium (DHE) and 2',7'-dichlorofluorescein diacetate (DCFH-DA), respectively, and expressed as relative fluorescence units per total cell protein. (C) Lipid peroxides levels in the culture media assessed as TBARS by UHPLC and expressed as malondialdehyde (MDA) pmol/ml (n = 5). (D) NADPH oxidase (NADPHox) activity assessed using a lucigenin-enhanced chemiluminescence assay and expressed as relative luminescence units per total cell protein (n = 4). All data are expressed as fold change versus C and presented as mean \pm SD. **p < 0.01, ***p < 0.001 vs. C; ## p < 0.01, ### p < 0.001 vs. nLDL.

<https://doi.org/10.1371/journal.pone.0245797.g004>

LDL aggregation is an important non-oxidative modification undergoing in the vascular wall due to the trapping of the transcytosed LDL in the intima of the arterial wall, where they associate with the extracellular matrix proteoglycans [4,6]. Our data show that agLDL induce excessive intracellular accumulation of FC and EC in THP-1 macrophages and their transformation in foam cells, in good agreement with previous reports [16,30]. AgLDL did not change LRP1 and CD36 expression, in good agreement with previously published data [30]. OxLDL did not modify FC levels, but stimulated the accumulation of 7-KC in the cells, generating ERS [12].

Our results demonstrate for the first time that the exposure of macrophages to agLDL significantly decreases $\Delta\Psi_m$ and as a consequence, the intracellular ATP levels, without stimulating oxidative stress (mtROS or intracellular NADPHox-derived ROS). Thus, we may presume that in our experimental conditions, agLDL induce mitochondrial dysfunction. It is known that production of ROS is associated with mitochondrial dysfunction and has been associated with the initiation and progression of the atherosclerotic plaque [23]. ROS play a very important role in the generation of mitochondrial dysfunction and trigger a vicious circle: ROS harm mitochondria, generating dysfunctional mitochondria, and dysfunctional mitochondria produce more ROS [35]. In contrast to agLDL, oxLDL increase the intracellular oxidative stress which is associated with an increased mitochondrial dysfunction, ERS and apoptosis. In good agreement with our findings, Zamora et al reported that the partial loss of mitochondrial function is not enough to promote pro-atherogenic activities in macrophages [36]. Therefore,

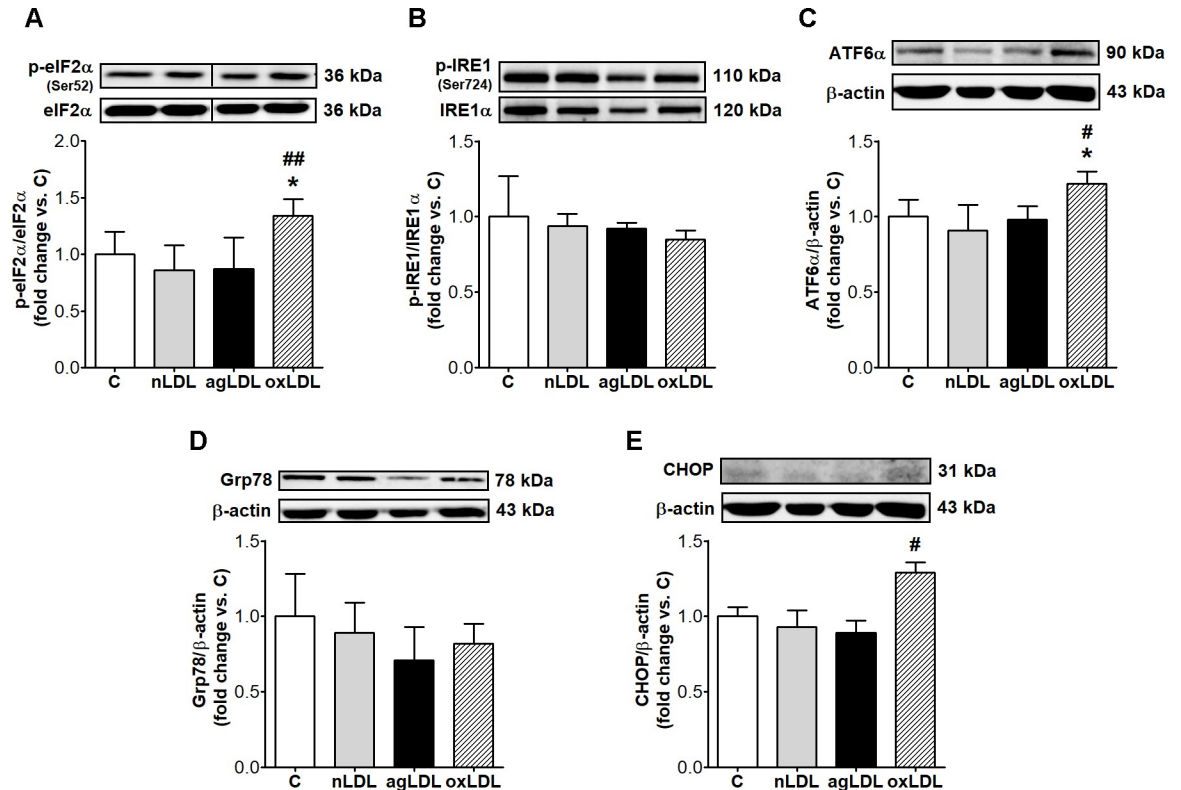


Fig 5. AgLDL do not trigger ER stress in THP-1 macrophages. Cells were exposed for 24 h to 100 µg/ml aggregated LDL (agLDL), oxidized LDL (oxLDL) or native LDL (nLDL). Cells incubated in the same conditions without LDL were considered control cells (C). Representative blots and densitometric analysis of phospho-eIF2α (p-eIF2α) normalized to total eIF2α (t-eIF2α) (n = 3) (A), phospho-IRE1 (p-IRE1) normalized to IRE1α (n = 4) (B), ATF6α (n = 4) (D), Grp78 (n = 3) (E) and CHOP (n = 4) (F) protein normalized to β-actin. All data are expressed as fold change versus C and presented as mean ± SD. *p < 0.05 vs. C; #p < 0.05, ##p < 0.01 vs. nLDL.

<https://doi.org/10.1371/journal.pone.0245797.g005>

it is a good reason to believe that the foam cells generated by agLDL-interaction with macrophages may be considered the equivalent of fatty streak. Moreover, agLDL-exposure of THP-1 macrophages did not induce apoptosis of the cells, Bax/Bcl-2 ratio being unaltered, in good

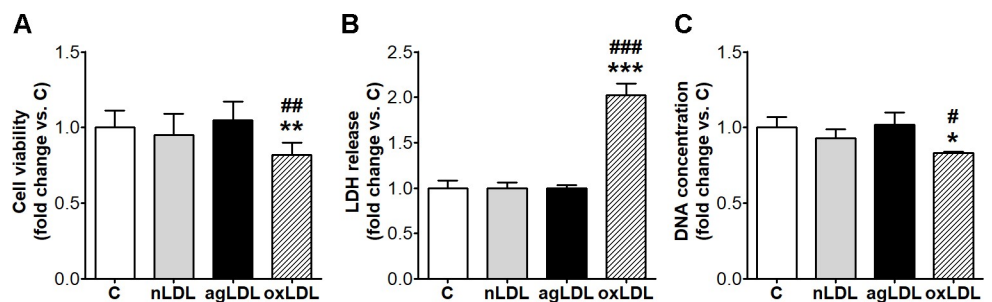


Fig 6. AgLDL do not affect viability of THP-1 macrophages. Cells were exposed for 24 h to 100 µg/ml aggregated LDL (agLDL), oxidized LDL (oxLDL) or native LDL (nLDL). Cells incubated in the same conditions without LDL were considered control cells (C). (A) Cell viability measured using an assay based on tetrazolium salt (MTT). (B) Lactate dehydrogenase (LDH) release in the culture medium assessed using CytoTox-ONE™ Homogeneous Membrane Integrity Assay. (C) Cell proliferation assessed by Hoechst 33258 fluorimetric assay, expressed as µg DNA. All data are represented as fold change versus C and presented as mean ± SD (n = 4). *p < 0.05, **p < 0.01, ***p < 0.001 vs. C; #p < 0.05, ##p < 0.01, ###p < 0.001 vs. nLDL.

<https://doi.org/10.1371/journal.pone.0245797.g006>

agreement with previously published data [37]. In addition, we show for the first time that agLDL incubation did not trigger ERS in THP-1 macrophages and did not affect their viability and proliferation, probably due to the absence of oxidative stress which is a determinant of ERS [24]. A complementary explanation could be the interesting report that intracellular lipid droplets protect against ERS by acting like buffers that sequester the misfolded proteins and the excess lipids, rebalancing ER lipid homeostasis [38].

In conclusion, our results demonstrate that the FC loading induced by agLDL exposure in the absence of the oxidative stress is not sufficient to generate advanced mitochondrial dysfunction and ERS in foam cells-derived macrophages, ROS being probably the key player in this process.

These data could partially explain the early formation of fatty streaks in the intima of human arteries by the interaction of accumulated, non-oxidatively aggregated LDL with monocyte-derived macrophages generating foam cells, which cannot evolve into atherosclerotic plaque in the absence of the oxidative stress.

Supporting information

S1 File.

(DOCX)

Acknowledgments

The authors thank Ms. Daniela Rogoz and Ms. Cristina Dobre for their skillful technical assistance.

Author Contributions

Conceptualization: Gabriela M. Sanda, Anca V. Sima.

Formal analysis: Gabriela M. Sanda, Mariana Deleanu, Loredan S. Niculescu.

Investigation: Gabriela M. Sanda, Camelia S. Stancu, Mariana Deleanu, Laura Toma.

Methodology: Gabriela M. Sanda, Camelia S. Stancu, Mariana Deleanu, Laura Toma.

Software: Loredan S. Niculescu.

Supervision: Camelia S. Stancu, Anca V. Sima.

Writing – original draft: Gabriela M. Sanda, Camelia S. Stancu, Laura Toma, Anca V. Sima.

Writing – review & editing: Gabriela M. Sanda, Camelia S. Stancu, Anca V. Sima.

References

1. Brown MS, Goldstein JL. Lipoprotein metabolism in the macrophage: implications for cholesterol deposition in atherosclerosis. *Annu Rev Biochem.* 1983; 52:223–61. <https://doi.org/10.1146/annurev.bi.52.070183.001255> PMID: 6311077
2. Sung HJ, Kim J, Kim Y, Jang SW, Ko J. N-acetyl cysteine suppresses the foam cell formation that is induced by oxidized low density lipoprotein via regulation of gene expression. *Mol Biol Rep.* 2012 Mar; 39(3):3001–7. <https://doi.org/10.1007/s11033-011-1062-1> PMID: 21681422
3. Nistor A, Bulla A, Filip DA, Radu A. The hyperlipidemic hamster as a model of experimental atherosclerosis. *Atherosclerosis.* 1987 Nov; 68(1–2):159–73. [https://doi.org/10.1016/0021-9150\(87\)90106-7](https://doi.org/10.1016/0021-9150(87)90106-7) PMID: 3689479
4. Li AC, Glass CK. The macrophage foam cell as a target for therapeutic intervention. *Nat Med.* 2002 Nov; 8(11):1235–42. <https://doi.org/10.1038/nm1102-1235> PMID: 12411950

5. Kleemann R, Zadelaar S, Kooistra T. Cytokines and atherosclerosis: a comprehensive review of studies in mice. *Cardiovasc Res*. 2008 Aug 1; 79(3):360–76. <https://doi.org/10.1093/cvr/cvn120> PMID: 18487233
6. Williams KJ. Arterial wall chondroitin sulfate proteoglycans: diverse molecules with distinct roles in lipoprotein retention and atherogenesis. *Curr Opin Lipidol*. 2001 Oct; 12(5):477–87. <https://doi.org/10.1097/00041433-200110000-00002> PMID: 11561166
7. Hakala JK, Oorni K, Pentikainen MO, Hurt-Camejo E, Kovanen PT. Lipolysis of LDL by human secretory phospholipase A(2) induces particle fusion and enhances the retention of LDL to human aortic proteoglycans. *Arterioscler Thromb Vasc Biol*. 2001 Jun; 21(6):1053–8. <https://doi.org/10.1161/01.atv.21.6.1053> PMID: 11397719
8. Khoo JC, Miller E, McLoughlin P, Steinberg D. Enhanced macrophage uptake of low density lipoprotein after self-aggregation. *Arteriosclerosis*. 1988 Jul-Aug; 8(4):348–58. <https://doi.org/10.1161/01.atv.8.4.348> PMID: 3395271
9. Zhang WY, Ishii I, Kruth HS. Plasmin-mediated macrophage reversal of low density lipoprotein aggregation. *J Biol Chem*. 2000 Oct 20; 275(42):33176–83. <https://doi.org/10.1074/jbc.M908714199> PMID: 10942782
10. Kruth HS. Sequestration of aggregated low-density lipoproteins by macrophages. *Curr Opin Lipidol*. 2002 Oct; 13(5):483–8. <https://doi.org/10.1097/00041433-200210000-00003> PMID: 12352011
11. Llorente-Cortes V, Royo T, Otero-Vinas M, Berrozpe M, Badimon L. Sterol regulatory element binding proteins downregulate LDL receptor-related protein (LRP1) expression and LRP1-mediated aggregated LDL uptake by human macrophages. *Cardiovasc Res*. 2007 Jun 1; 74(3):526–36. <https://doi.org/10.1016/j.cardiores.2007.02.020> PMID: 17376415
12. Sanda GM, Deleanu M, Toma L, Stancu CS, Simionescu M, Sima AV. Oxidized LDL-Exposed Human Macrophages Display Increased MMP-9 Expression and Secretion Mediated by Endoplasmic Reticulum Stress. *J Cell Biochem*. 2017 Apr; 118(4):661–9. <https://doi.org/10.1002/jcb.25637> PMID: 27341688
13. Yao S, Zong C, Zhang Y, Sang H, Yang M, Jiao P, et al. Activating transcription factor 6 mediates oxidized LDL-induced cholesterol accumulation and apoptosis in macrophages by up-regulating CHOP expression. *J Atheroscler Thromb*. 2013; 20(1):94–107. <https://doi.org/10.5551/jat.13425> PMID: 23037953
14. Lara-Guzman OJ, Gil-Izquierdo A, Medina S, Osorio E, Alvarez-Quintero R, Zuluaga N, et al. Oxidized LDL triggers changes in oxidative stress and inflammatory biomarkers in human macrophages. *Redox Biol*. 2018 May; 15:1–11. <https://doi.org/10.1016/j.redox.2017.11.017> PMID: 29195136
15. Asmis R, Begley JG. Oxidized LDL promotes peroxide-mediated mitochondrial dysfunction and cell death in human macrophages: a caspase-3-independent pathway. *Circ Res*. 2003 Jan 10; 92(1):e20–9. <https://doi.org/10.1161/01.res.0000051886.43510.90> PMID: 12522131
16. Griffin EE, Ullery JC, Cox BE, Jerome WG. Aggregated LDL and lipid dispersions induce lysosomal cholesteryl ester accumulation in macrophage foam cells. *J Lipid Res*. 2005 Oct; 46(10):2052–60. <https://doi.org/10.1194/jlr.M500059-JLR200> PMID: 16024919
17. Orso E, Grandl M, Schmitz G. Oxidized LDL-induced endolysosomal phospholipidosis and enzymatically modified LDL-induced foam cell formation determine specific lipid species modulation in human macrophages. *Chem Phys Lipids*. 2011 Sep; 164(6):479–87. <https://doi.org/10.1016/j.chemphyslip.2011.06.001> PMID: 21683693
18. Feng B, Yao PM, Li Y, Devlin CM, Zhang D, Harding HP, et al. The endoplasmic reticulum is the site of cholesterol-induced cytotoxicity in macrophages. *Nat Cell Biol*. 2003 Sep; 5(9):781–92. <https://doi.org/10.1038/ncb1035> PMID: 12907943
19. Liu ML, Reilly MP, Casasanto P, McKenzie SE, Williams KJ. Cholesterol enrichment of human monocyte/macrophages induces surface exposure of phosphatidylserine and the release of biologically-active tissue factor-positive microvesicles. *Arterioscler Thromb Vasc Biol*. 2007 Feb; 27(2):430–5. <https://doi.org/10.1161/01.ATV.0000254674.47693.e8> PMID: 17158353
20. Sorescu D, Griendling KK. Reactive oxygen species, mitochondria, and NAD(P)H oxidases in the development and progression of heart failure. *Congest Heart Fail*. 2002 May-Jun; 8(3):132–40. <https://doi.org/10.1111/j.1527-5299.2002.00717.x> PMID: 12045381
21. Madamanchi NR, Runge MS. Mitochondrial dysfunction in atherosclerosis. *Circ Res*. 2007 Mar 2; 100(4):460–73. <https://doi.org/10.1161/01.RES.0000258450.44413.96> PMID: 17332437
22. Twig G, Shirihai OS. The interplay between mitochondrial dynamics and mitophagy. *Antioxid Redox Signal*. 2011 May 15; 14(10):1939–51. <https://doi.org/10.1089/ars.2010.3779> PMID: 21128700
23. Peng W, Cai G, Xia Y, Chen J, Wu P, Wang Z, et al. Mitochondrial Dysfunction in Atherosclerosis. *DNA Cell Biol*. 2019 Jul; 38(7):597–606. <https://doi.org/10.1089/dna.2018.4552> PMID: 31095428

24. Chong WC, Shastri MD, Eri R. Endoplasmic Reticulum Stress and Oxidative Stress: A Vicious Nexus Implicated in Bowel Disease Pathophysiology. *Int J Mol Sci*. 2017 Apr 5; 18(4). <https://doi.org/10.3390/ijms18040771> PMID: 28379196
25. Sima AV, Botez GM, Stancu CS, Manea A, Raicu M, Simionescu M. Effect of irreversibly glycosylated LDL in human vascular smooth muscle cells: lipid loading, oxidative and inflammatory stress. *J Cell Mol Med*. 2010 Dec; 14(12):2790–802. <https://doi.org/10.1111/j.1582-4934.2009.00933.x> PMID: 19818091
26. Llorente-Cortes V, Otero-Vinas M, Hurt-Camejo E, Martinez-Gonzalez J, Badimon L. Human coronary smooth muscle cells internalize versican-modified LDL through LDL receptor-related protein and LDL receptors. *Arterioscler Thromb Vasc Biol*. 2002 Mar 1; 22(3):387–93. <https://doi.org/10.1161/hq0302.105367> PMID: 11884279
27. Llorente-Cortes V, Martinez-Gonzalez J, Badimon L. LDL receptor-related protein mediates uptake of aggregated LDL in human vascular smooth muscle cells. *Arterioscler Thromb Vasc Biol*. 2000 Jun; 20(6):1572–9. <https://doi.org/10.1161/01.atv.20.6.1572> PMID: 10845874
28. Deleanu M, Sanda GM, Stancu CS, Popa ME, Sima AV. Profiles of fatty acids and the main lipid peroxidation products of human atherogenic low density lipoproteins. *Rev Chim (Bucharest)*. 2016; 67(1):8–12. <https://doi.org/10.37358/Rev.Chim.1949>
29. Seljeskog E, Hervig T, Mansoor MA. A novel HPLC method for the measurement of thiobarbituric acid reactive substances (TBARS). A comparison with a commercially available kit. *Clin Biochem*. 2006 Sep; 39(9):947–54. <https://doi.org/10.1016/j.clinbiochem.2006.03.012> PMID: 16781699
30. Llorente-Cortes V, Royo T, Juan-Babot O, Badimon L. Adipocyte differentiation-related protein is induced by LRP1-mediated aggregated LDL internalization in human vascular smooth muscle cells and macrophages. *J Lipid Res*. 2007 Oct; 48(10):2133–40. <https://doi.org/10.1194/jlr.M700039-JLR200> PMID: 17620659
31. Livak KJ, Schmittgen TD. Analysis of relative gene expression data using real-time quantitative PCR and the 2⁻(Delta Delta C(T)) Method. *Methods*. 2001 Dec; 25(4):402–8. <https://doi.org/10.1006/meth.2001.1262> PMID: 11846609
32. McLennan HR, Degli Esposti M. The contribution of mitochondrial respiratory complexes to the production of reactive oxygen species. *J Bioenerg Biomembr*. 2000 Apr; 32(2):153–62. <https://doi.org/10.1023/a:1005507913372> PMID: 11768748
33. Toma L, Sanda GM, Niculescu LS, Deleanu M, Stancu CS, Sima AV. Caffeic acid attenuates the inflammatory stress induced by glycosylated LDL in human endothelial cells by mechanisms involving inhibition of AGE-receptor, oxidative, and endoplasmic reticulum stress. *Biofactors*. 2017 Sep 10; 43(5):685–97. <https://doi.org/10.1002/biof.1373> PMID: 28753257
34. Toma L, Sanda GM, Raileanu M, Stancu CS, Niculescu LS, Sima AV. Ninjurin-1 upregulated by TNFalpha receptor 1 stimulates monocyte adhesion to human TNFalpha-activated endothelial cells; beneficial effects of amlodipine. *Life Sci*. 2020 May 15; 249:117518. <https://doi.org/10.1016/j.lfs.2020.117518> PMID: 32147432
35. Kluge MA, Fetterman JL, Vita JA. Mitochondria and endothelial function. *Circ Res*. 2013 Apr 12; 112(8):1171–88. <https://doi.org/10.1161/CIRCRESAHA.111.300233> PMID: 23580773
36. Zamora DA, Downs KP, Ullevig SL, Tavakoli S, Kim HS, Qiao M, et al. Glutaredoxin 2a overexpression in macrophages promotes mitochondrial dysfunction but has little or no effect on atherogenesis in LDL-receptor null mice. *Atherosclerosis*. 2015 Jul; 241(1):69–78. <https://doi.org/10.1016/j.atherosclerosis.2015.04.805> PMID: 25966442
37. Persson J, Nilsson J, Lindholm MW. Cytokine response to lipoprotein lipid loading in human monocyte-derived macrophages. *Lipids Health Dis*. 2006 Jun 26; 5:17. <https://doi.org/10.1186/1476-511X-5-17> PMID: 16800873
38. Jarc E, Petan T. Lipid Droplets and the Management of Cellular Stress. *Yale J Biol Med*. 2019 Sep; 92(3):435–52. PMID: 31543707