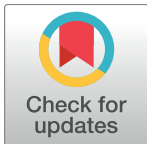


CORRECTION

# Correction: Challenges of developing a cardiovascular risk calculator for patients with rheumatoid arthritis

Cynthia S. Crowson, Silvia Rollefstad, George D. Kitas, Piet L. C. M. van Riel, Sherine E. Gabriel, Anne Grete Semb, on behalf of A Trans-Atlantic Cardiovascular Risk Consortium for Rheumatoid Arthritis (ATACC-RA)

The in-figure legend of [Fig 1](#) appears incorrectly in the published article. Please see the correct [Fig 1](#) and its caption here.

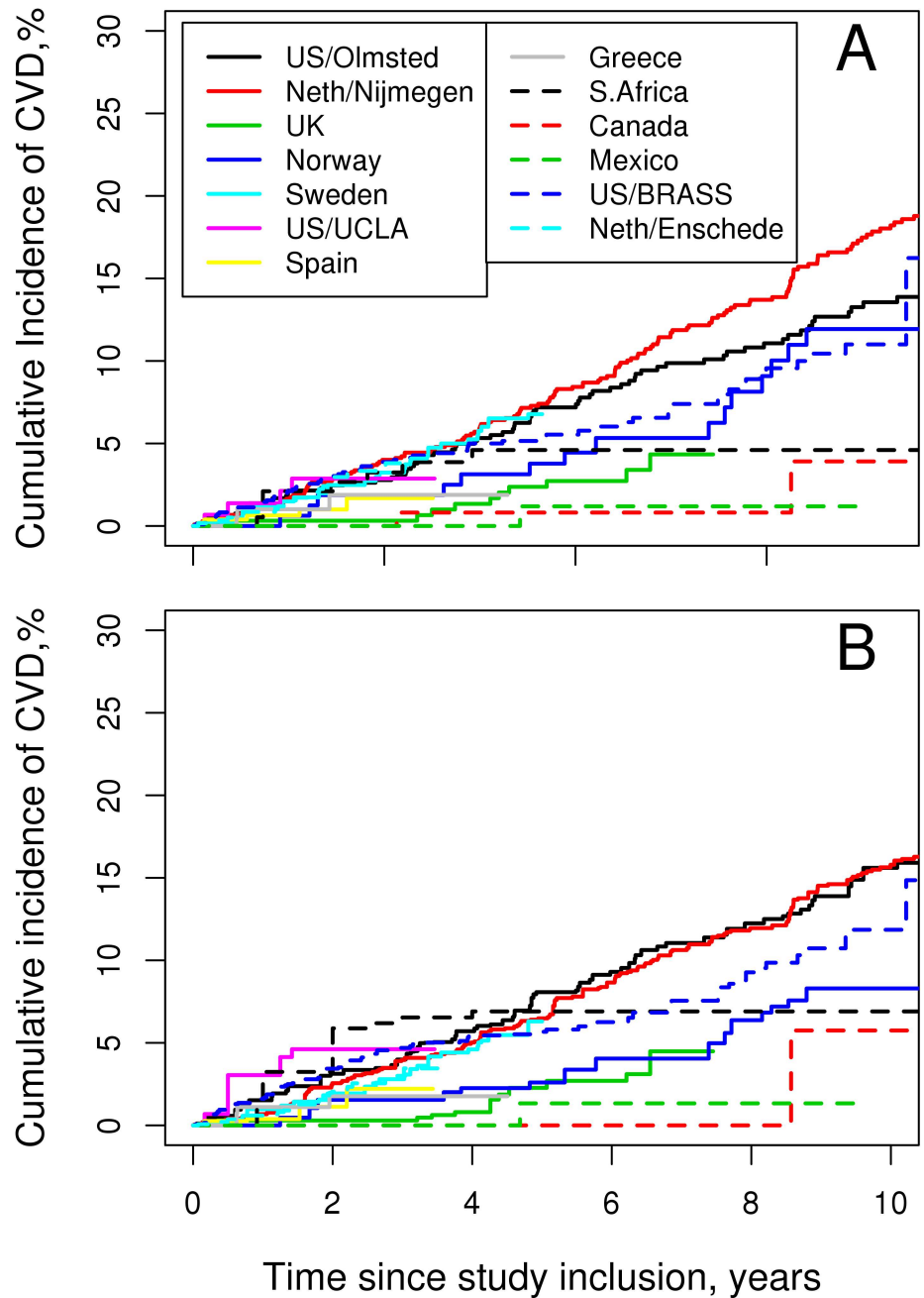


## OPEN ACCESS

**Citation:** Crowson CS, Rollefstad S, Kitas GD, van Riel PLCM, Gabriel SE, Semb AG, et al. (2017) Correction: Challenges of developing a cardiovascular risk calculator for patients with rheumatoid arthritis. PLoS ONE 12(4): e0175605. <https://doi.org/10.1371/journal.pone.0175605>

**Published:** April 7, 2017

**Copyright:** © 2017 Crowson et al. This is an open access article distributed under the terms of the [Creative Commons Attribution License](#), which permits unrestricted use, distribution, and reproduction in any medium, provided the original author and source are credited.



**Fig 1. Cardiovascular event rates by cohort.** (A) unadjusted rates. (B) rates adjusted for cardiovascular risk factors.

<https://doi.org/10.1371/journal.pone.0175605.g001>

## Reference

1. Crowson CS, Rollefstad S, Kitas GD, van Riel PLCM, Gabriel SE, Semb AG, et al. (2017) Challenges of developing a cardiovascular risk calculator for patients with rheumatoid arthritis. PLoS ONE 12(3): e0174656. <https://doi.org/10.1371/journal.pone.0174656> PMID: 28334012